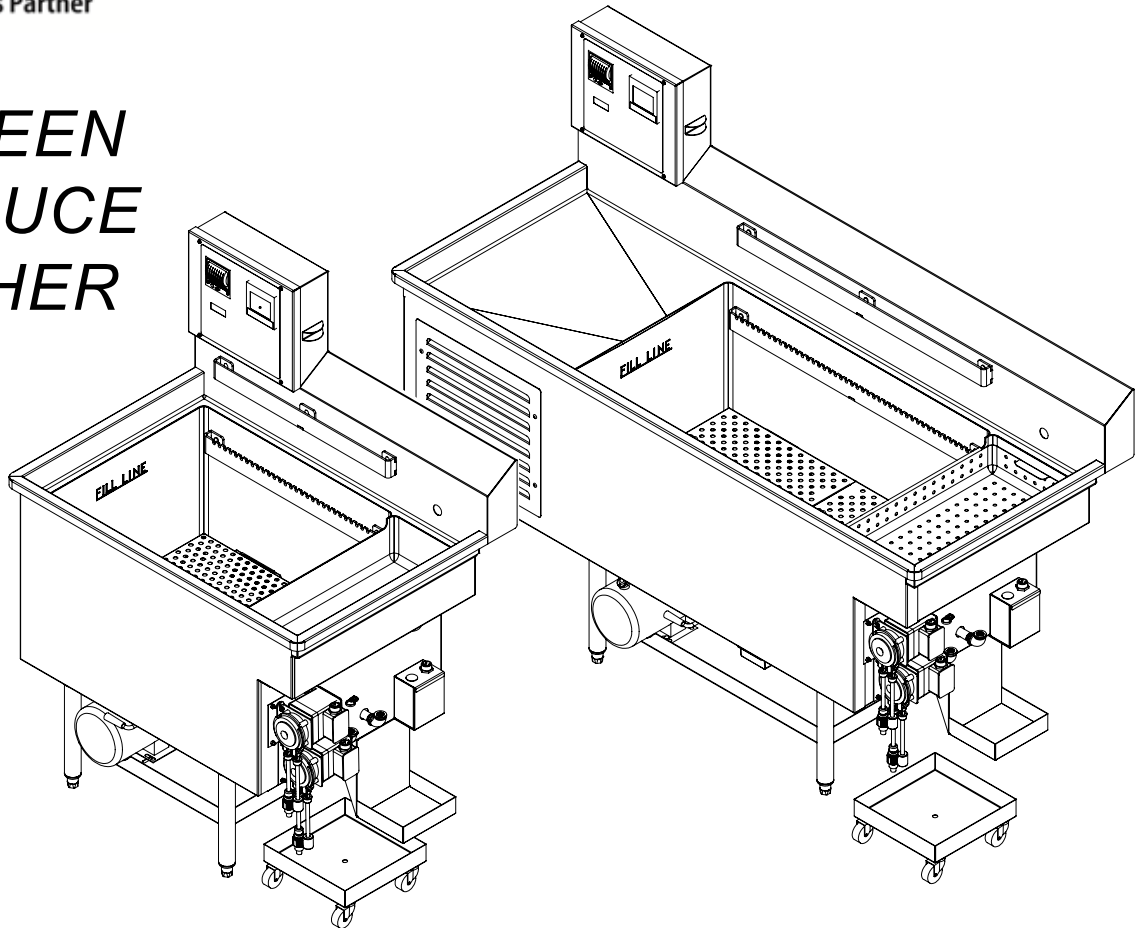




Your Solutions Partner

# Illustrated Parts List

## X-GREEN PRODUCE WASHER



**MODELS**  
**XGRR**  
**MIXG-ICE**

---

*This manual is Copyright © 2019 Duke Manufacturing Co. All rights reserved.  
Reproduction without written permission is prohibited. Duke is a registered  
trademark of the Duke Manufacturing Co.*

## Duke Manufacturing Co.

2305 N. Broadway • St. Louis, MO 63102

800.735.3853 • 314.231.1130

Fax: 314-231-5074

[www.dukemfg.com](http://www.dukemfg.com)



## TABLE OF CONTENTS

XGRR, X-GREEN PRODUCE WASHER, LEFT TO RIGHT .....	4
Figure: PL-1 XGRR, X-Green Produce Washer, Left to Right .....	4
Table: XGGR, X-Green Produce Washer, Left to Right.....	5
XGRR, X-GREEN PRODUCE WASHER, RIGHT TO LEFT .....	6
Figure: PL-2 XGRR, X-Green Produce Washer, Right to Left.....	6
Table: PL-2 XGRR, X-Green Produce Washer, Right to Left .....	7
MIXG, X-GREEN ICE LEFT TO RIGHT .....	8
Figure: PL-3 MIXG, X-Green ICE Left to Right .....	8
Table: PL-3 MIXG, X-Green ICE Left to Right.....	9
MIXG, X-GREEN ICE RIGHT TO LEFT .....	10
Figure: PL-4 MIXG, X-Green ICE Right to Left .....	10
Table: PL-4 MIXG, X-Green ICE Right to Left.....	11
WIRE DIAGRAMS .....	12
X-Green, XGRR .....	12
X-Green, MIXG .....	14
X-Green, XGRN .....	16

## XGRR, X-GREEN PRODUCE WASHER, LEFT TO RIGHT

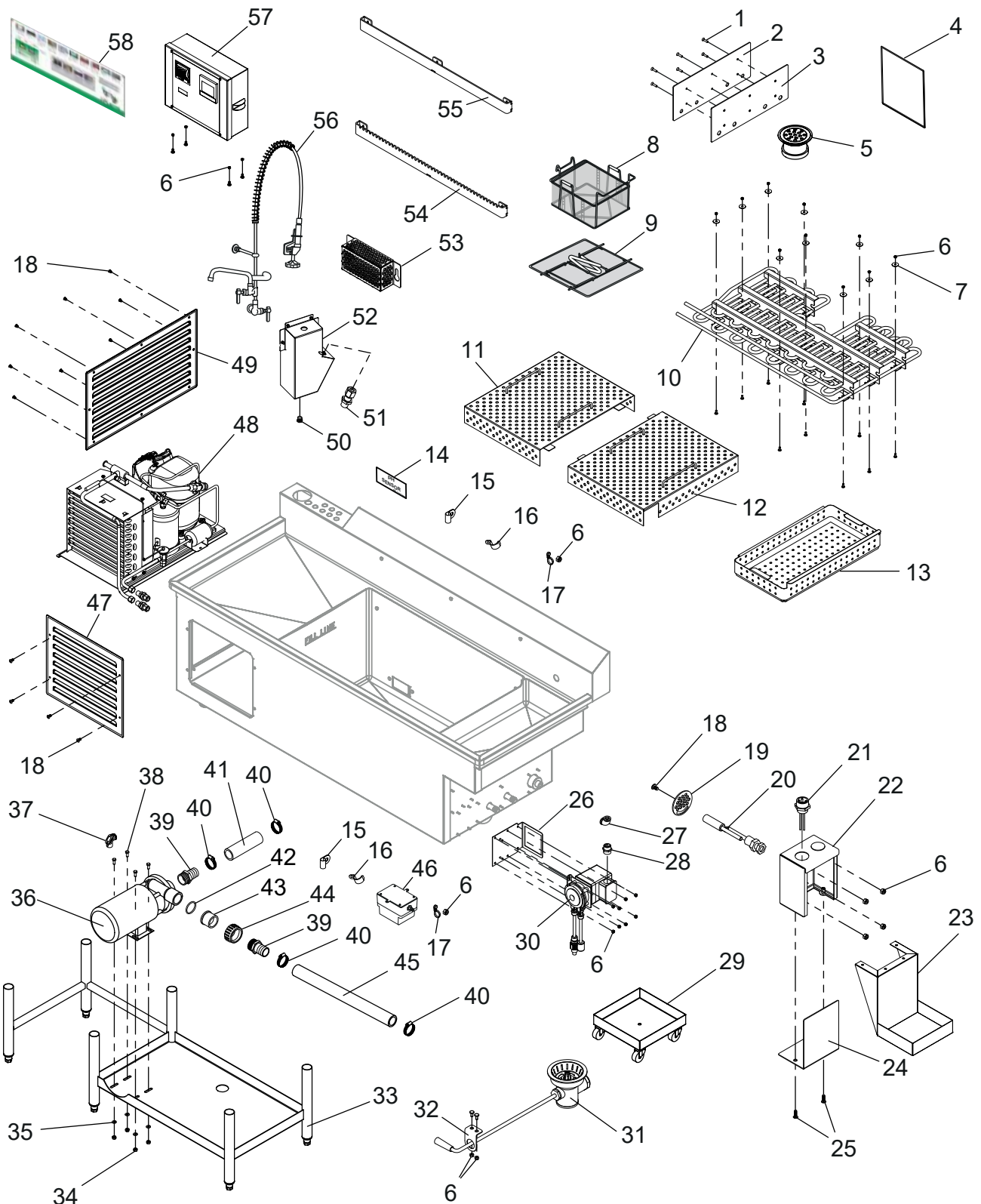


Figure: PL-1 XGRR, X-Green Produce Washer, Left to Right

**XGRR, X-GREEN PRODUCE WASHER, LEFT TO RIGHT**

ITEM	P/N	DESCRIPTION	QTY
1	115158	SCREW, 1/4-20 × 1" FL SKT SS	6
2	115436	COVER, DISCHARGE W/COUNTERSINK	1
3	116147	GASKET, COVER, DISCHARGE X-GREEN	1
4	115374	OWNERS MANUAL X-GREEN	1
5	115244	DRAIN, SINK, RINSE, SMALL 1-1/2"	1
6	10221550	NUT, 10-24 SS ELASTIC STOP	75
7	116057	WASHER, HANDLE, BOTTOM FALSE	10
8	226715	BASKET, LARGE COARSE MESH DUKE-181508-XX	2
9	226724	LID, LARGE SIZE COARSE MESH DUKE-1815-LID	2
10	116075	ASSY, COIL REFRIG LEFT X-GREEN	1
11	116079	ASSY, FALSE BOTTOM, LEFT X-GREEN	1
12	116080	ASSY, FALSE BOTTOM, RIGHT X-GREEN	1
13	115928	BASKET, SCRAP, XGRR, X-GREEN	1
14	116746	LABEL, pH SENSOR	1
15	115412	CLAMP, CABLE NYLON	6
16	212201	CLAMP STRAP 3/4" 1 HOLE	1
17	115106	WIRE TIE, 8" BLACK W/MTG HOLE	21
18	10280400	SCREW, 10-24 × 3/8" TR PH SS MACHINE	13
19	116026	SCREEN FLOAT TUBE	1
20	115036	SWITCH, FLOAT STRAIGHT MADISON M5910	1
21	115094	CONNECTOR, 4-POLE MALE	1
22	116682	ASSY, BOX FLOAT END XGRR	1
23	116027	HOLDER BASKET	1
24	116024	COVER BOX FLOAT END	1
25	279500	SCREW, 8-32 × 1/2" PTHMS 18-8SS	2
26	116159	ASSY, PUMP MOUNT, PEMS X-GREEN	2
27	226720	ELBOW, THD 1/2"	2
28	115094	CONNECTOR, 4-POLE	2
29	116093	WELDMENT, SOAP CART	1
30	115022	PUMP, CHEMICAL 230V 60HZ	2
31	116008	ASSY, LEVER DRAIN, MODIFIED X-GREEN	1
32	116681	BRACKET, DRAIN LEVER XGRR	1
33	116089	ASSY, SHELF BASE LT XGRR X-GREEN	1
34	224151	NUT, 5/16-18 S.S. NYLON INSERT HEX	4
35	512924	WASHER, 5/16 FLAT USS ZINC	4
36	226721	PUMP, 1.5HP, 230/115V 60HZ 1PH 3450	1
37	115302	ELBOW, PULL, 1/2", 90 DEG	1
38	313174	SCREW, 5/16-18 × 3/4" HX CP SS	4
39	115300	NIPPLE, 1-1/2" KING COMBO 316	2
40	115140	CLAMP, HOSE 2"-3" STAINLESS	4
41	116156	TUBE, 5", PUMP RETURN, TYGON 1.500 × 6.750 TYGON TUBE	1
42	115299	O-RING, 1.859 ID, 0.139 THICK MOD# 0568-225	1
43	115298	FITTING, 1-1/2" TAIL PIPE	1
44	116143	NUT, 1-1/2 BUTTRESS THREAD PVC	1
45	116158	TUBE, 21", PUMP SUPPLY, TYGON 1.500 × 22.00 TYGON TUBE	1
46	116757	ASSY, TRANSMITTER PH	1
47	116033	PANEL, LOUVER FRONT, X-GREEN	1
48	116121	ASSY, COMPRESSOR, X-GREEN, LEFT HAND	1
49	116032	PANEL, LOUVER END, X-GREEN	1
50	115122	PLUG, HEX HEAD 1/4"NPT	1
51	226708	COUPLING, SENSOR HOLDER D NON METALLIC	1
52	116108	ASSY, PLENUM, COVER, LEFT	1
NOT SHOWN	116445	BOLT, THERMOCOUPLE TYPE K	1
53	116021	GUARD INTAKE PUMP	1
54	116082	ASSY, HANGER, SINK, XGRR	1
55	116081	ASSY, HANGER, TOP, XGRR	1
56	226719	FAUCET, PRE-RINSE W/10" ADD-A-FAUCET	1
57	115220	ASSY, CTRL BOX LEFT XGRR X-GREEN	1
NOT SHOWN	115217	CABLE, INTERFACE, PH SENSOR	1
58	116761	WALL CHART, X-GREEN	1
NOT SHOWN	227900	(1) GALLON ANTIFOAM, TRANS-20A 4 1-GAL. CONTAINERS/CASE--SO SPECS	1
NOT SHOWN	226716	LABEL, GREEN 58MM X CONT. P58LGRN (175 LABELS/RL)	1
NOT SHOWN	600317	KIT, PH PROBE & SENSOR CALIBRATION	1
NOT SHOWN	227901	ANTIBACTERIAL, FIT, 5 GALLON	1

**Table: PL-1 XGRR, X-Green Produce Washer, Left to Right**

## XGRR, X-GREEN PRODUCE WASHER, RIGHT TO LEFT

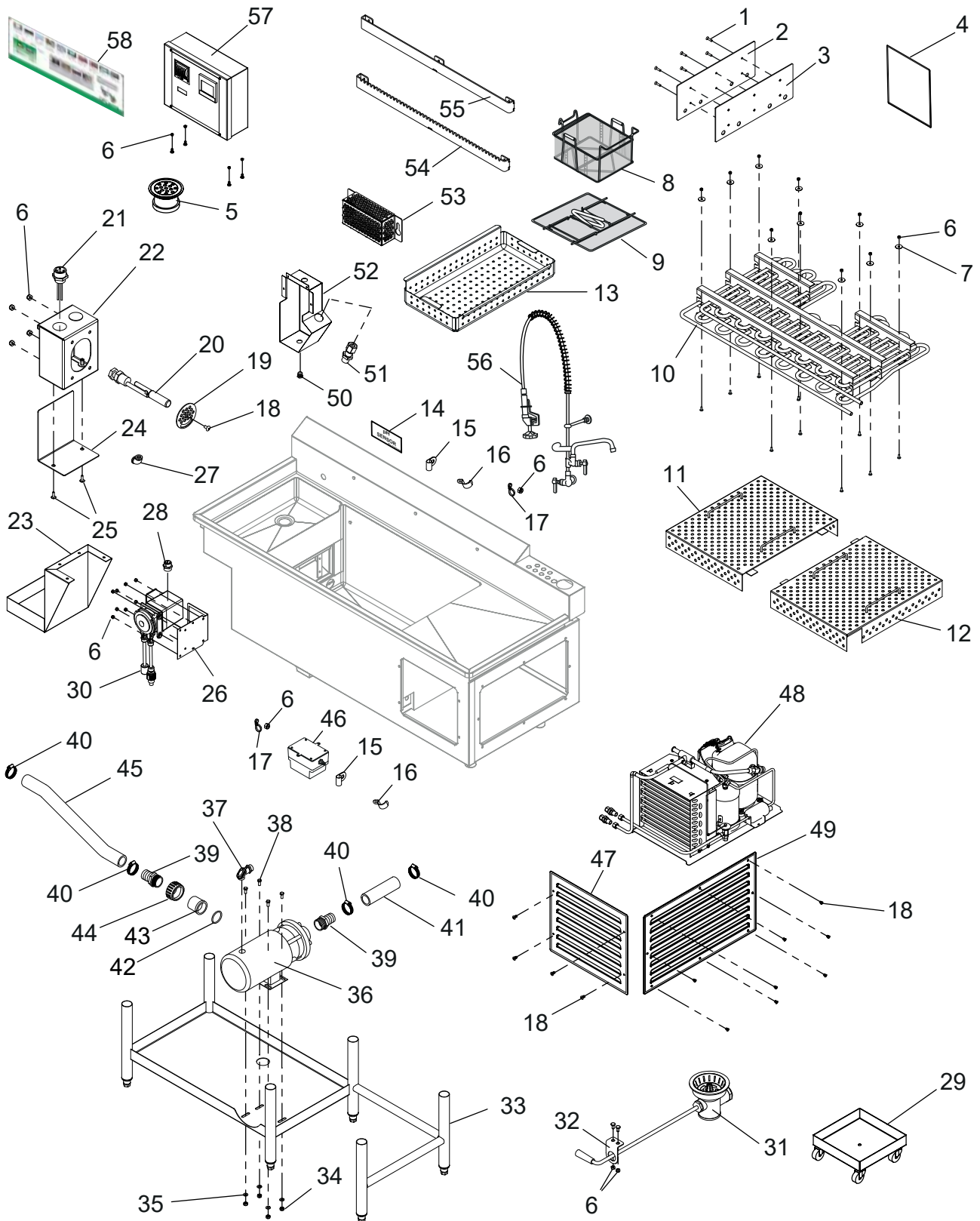


Figure: PL-2 XGRR, X-Green Produce Washer, Right to Left

**XGRR, X-GREEN PRODUCE WASHER, RIGHT TO LEFT**

ITEM	P/N	DESCRIPTION	QTY
1	115158	SCREW, 1/4-20 × 1"FL SKT SS	6
2	115436	COVER, DISCHARGE W/COUNTERSINK	1
3	116147	GASKET, COVER, DISCHARGE X-GREEN	1
4	115374	OWNERS MANUAL X-GREEN	1
5	115244	DRAIN, SINK, RINSE, SMALL 1-1/2"	1
6	10221550	NUT, 10-24 SS ELASTIC STOP	75
7	116057	WASHER, HANDLE, BOTTOM FALSE	10
8	226715	BASKET, LARGE COARSE MESH DUKE-181508-XX	2
9	226724	LID, LARGE SIZE COARSE MESH DUKE-1815-LID	2
10	116076	ASSY, COIL REFRIG RIGHT X-GREEN	1
11	116079	ASSY, FALSE BOTTOM, LEFT X-GREEN	1
12	116080	ASSY, FALSE BOTTOM, RIGHT X-GREEN	1
13	115928	BASKET, SCRAP, XGRR, X-GREEN	1
14	116746	LABEL, pH SENSOR	1
15	115412	CLAMP, CABLE NYLON	6
16	212201	CLAMP STRAP 3/4" 1 HOLE	1
17	115106	WIRE TIE, 8"BLACK W/MTG HOLE	21
18	10280400	SCREW, 10-24 × 3/8"TR PH SS MACHINE	13
19	116026	SCREEN FLOAT TUBE	1
20	115036	SWITCH, FLOAT STRAIGHT MADISON M5910	1
21	115094	CONNECTOR, 4-POLE MALE	1
22	116682	ASSY, BOX FLOAT END XGRR	1
23	116027	HOLDER BASKET	1
24	116024	COVER BOX FLOAT END	1
25	279500	SCREW, 8-32 × 1/2" PTHMS 18-8SS	2
26	116159	ASSY, PUMP MOUNT, PEMS X-GREEN	2
27	226720	ELBOW, THD 1/2"	2
28	115094	CONNECTOR, 4-POLE	2
29	116093	WELDMENT, SOAP CART	1
30	115022	PUMP, CHEMICAL 230V 60HZ	2
31	116008	ASSY, LEVER DRAIN, MODIFIED X-GREEN	1
32	116681	BRACKET, DRAIN LEVER XGRR	1
33	116090	ASSY, SHELF BASE RT XGRR X-GREEN	1
34	224151	NUT, 5/16-18 S.S. NYLON INSERT HEX	4
35	512924	WASHER, 5/16 FLAT USS ZINC	4
36	226721	PUMP, 1.5HP, 230/115V 60HZ 1PH 3450	1
37	115302	ELBOW, PULL, 1/2", 90 DEG	1
38	313174	SCREW, 5/16-18 × 3/4"HX CP SS	4
39	115300	NIPPLE, 1-1/2" KING COMBO 316	2
40	115140	CLAMP, HOSE 2"-3" STAINLESS	4
41	116156	TUBE, 5", PUMP RETURN, TYGON 1.500 × 6.750 TYGON TUBE	1
42	115299	O-RING, 1.859 ID, 0.139 THICK MOD# 0568-225	1
43	115298	FITTING, 1-1/2" TAIL PIPE	1
44	116143	NUT, 1-1/2 BUTTRESS THREAD PVC	1
45	116158	TUBE, 21", PUMP SUPPLY, TYGON 1.500 × 22.00 TYGON TUBE	1
46	116757	ASSY, TRANSMITTER PH	1
47	116033	PANEL, LOUVER FRONT, X-GREEN	1
48	116144	ASSY, COMPRESSOR, X-GREEN, RIGHT HAND	1
49	116032	PANEL, LOUVER END, X-GREEN	1
50	115122	PLUG, HEX HEAD 1/4"NPT	1
51	226708	COUPLING, SENSOR HOLDER D NON METALLIC	1
52	116078	ASSY, PLENUM COVER, RIGHT X-GREEN	1
NOT SHOWN	116445	BOLT, THERMOCOUPLE TYPE K	1
53	116021	GUARD INTAKE PUMP	1
54	116082	ASSY, HANGER, SINK, XGRR	1
55	116081	ASSY, HANGER, TOP, XGRR	1
56	226719	FAUCET, PRE-RINSE W/10" ADD-A-FAUCET	1
57	115938	ASSY, CTRL BOX RIGHT XGRR X-GREEN	1
NOT SHOWN	115217	CAABLE, INTERFACE, PH SENSOR	1
58	116761	WALL CHART, X-GREEN	1
NOT SHOWN	227900	(1) GALLON ANTIFOAM, TRANS-20A 4 1-GAL. CONTAINERS/CASE--SO SPECS	1
NOT SHOWN	226716	LABEL, GREEN 58MM X CONT. P58LGRN (175 LABELS/RL)	1
NOT SHOWN	600317	KIT, PH PROBE & SENSOR CALIBRATION	1
NOT SHOWN	227901	ANTIBACTERIAL, FIT, 5 GALLON	1

**Table: PL-2 XGRR, X-Green Produce Washer, Right to Left**

### MIXG, X-GREEN ICE LEFT TO RIGHT

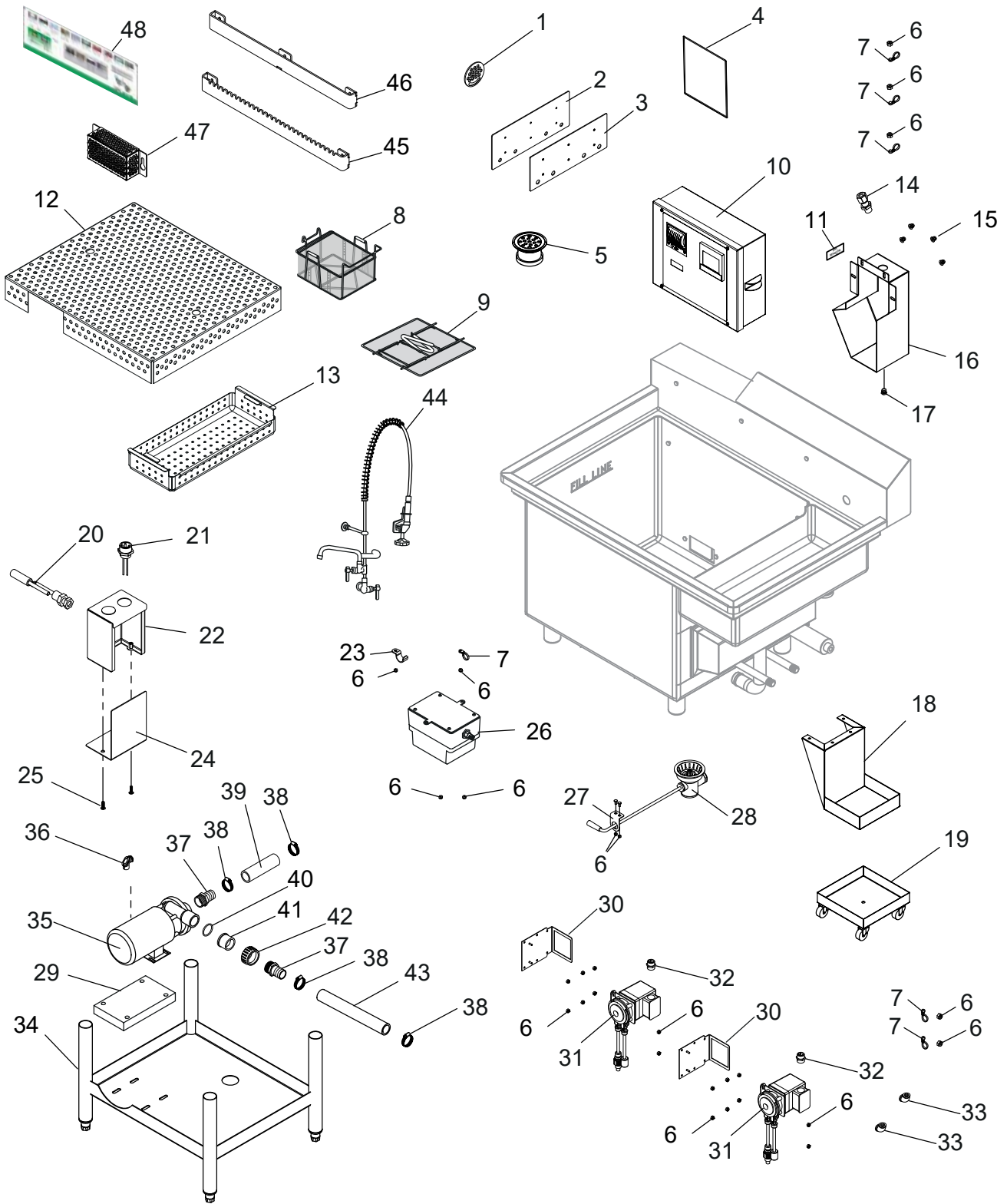


Figure: PL-3 MIXG, X-Green ICE, Left to Right

**MIXG, X-GREEN ICE LEFT TO RIGHT**

ITEM	P/N	DESCRIPTION	QTY
1	116026	SCREEN FLOAT TUBE	1
2	115436	COVER, DISCHARGE W/COUNTERSINK	1
3	116147	GASKET, COVER, DISCHARGE X-GREEN	1
4	115374	OWNERS MANUAL X-GREEN	1
5	115244	DRAIN, SINK, RINSE, SMALL 1-1/2"	1
6	10221550	NUT, 10-24 SS ELASTIC STOP	29
7	115106	WIRE TIE, 8"BLACK W/MTG HOLE	6
8	226715	BASKET, LARGE COARSE MESH	2
9	226724	LID, LARGE SIZE COARSE MESH DUKE-1815-LID	2
10	115936	ASSY, CTRL BOX LEFT XGRR X-GREEN	1
11	116746	LABEL, pH SENSOR	1
12	116054	PANEL, BOTTOM FALSE MIXG	1
13	115937	ASSY, BASKET SCRAP MIXG X-GREE	1
14	226708	COUPLING, SENSOR HOLDER D NON METALLIC	1
15	653031	NUT,10-24 CAP NICKEL PLATED	4
16	116108	ASSY, PLENUM, COVER, LEFT	1
NOT SHOWN	116445	BOLT, THERMOCOUPLE TYPE K	1
17	115122	PLUG, HEX HEAD 1/4" NPT	1
18	116027	HOLDER BASKET	1
19	116093	WELDMENT, SOAP CART	1
20	115036	SWITCH, FLOAT STRAIGHT MADISON M5910	1
21	115094	CONNECTOR, 4-POLE MALE	1
22	116682	ASSY, BOX FLOAT END XGRR	1
23	212201	CLAMP STRAP 3/4" 1 HOLE	1
24	116024	COVER BOX FLOAT END	1
25	279500	SCREW, 8-32 × 1/2" PTHMS 18-8SS	2
26	116757	ASSY, TRANSMITTER PH	1
27	116681	BRACKET, DRAIN LEVER XGRR	1
28	116008	ASSY, LEVER DRAIN, MODIFIED X-GREEN	1
29	116423	PAD,ANTI-VIBRATION, W/HOLSE	1
30	116159	ASSY, PUMP MOUNT, PEMS X-GREEN	2
31	226700	PUMP, CHEMICAL, 115V 60HZ A-16125-6/50000-656	2
32	115094	CONNECTOR, 4-POLE	2
33	226720	ELBOW, THD 1/2"	2
34	116091	ASSY, SHELF BASE LEFT MIXG X-GREEN	1
35	226722	PUMP, .75HP, 115V 60HZ 3450 RPM	1
36	115302	ELBOW, PULL, 1/2", 90 DEG	1
37	115300	NIPPLE, 1-1/2" KING COMBO 316	2
38	115140	CLAMP, HOSE 2"-3" STAINLESS	4
39	116156	TUBE, 5", PUMP RETURN, TYGON 1.500 × 6.750 TYGON TUBE	1
40	115299	O-RING, 1.859 ID, 0.139 THICK MOD# 0568-225	1
41	115298	FITTING, 1-1/2" TAIL PIPE	1
42	116143	NUT, 1-1/2 BUTTRESS THREAD PVC	1
43	116157	TUBE,11", PUMP SUPPLY, TYGON 1.500X11.0 TYGON TUBE	1
44	226719	FAUCET, PRE-RINSE W/10" ADD-A-FAUCET	1
45	116085	ASSY, HANGER, SINK, MIXG	1
46	116083	ASSY, HANGER, TOP, MIXG	1
47	116021	GUARD INTAKE PUMP	1
48	116761	WALL CHART, X-GREEN	1
NOT SHOWN	227900	(1) GALLON ANTIFOAM, TRANS-20A 4 1-GAL. CONTAINERS/CASE--SO SPECS	1
NOT SHOWN	226716	LABEL, GREEN 58MM X CONT. P58LGRN (175 LABELS/RL)	1
NOT SHOWN	116146	ASSY, X-GREEN, PH SENSOR CALIBRATION	1
NOT SHOWN	600317	KIT, PH PROBE & SENSOR CALIBRATION	1
NOT SHOWN	227901	ANTIBACTERIAL, FIT, 5 GALLON	1

**Table: PL-3 MIXG, X-Green ICE, Left to Right**

### MIXG, X-GREEN ICE RIGHT TO LEFT

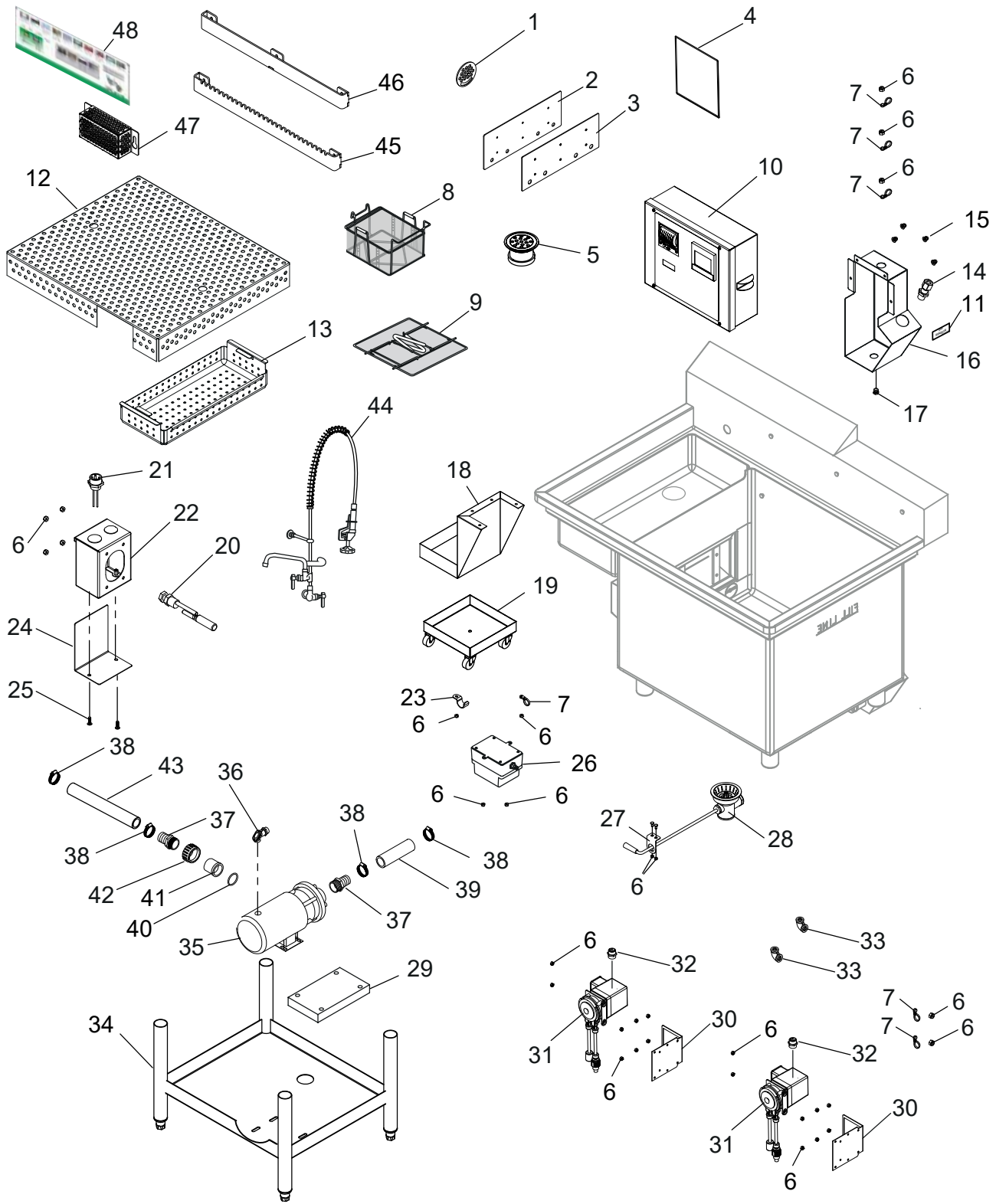
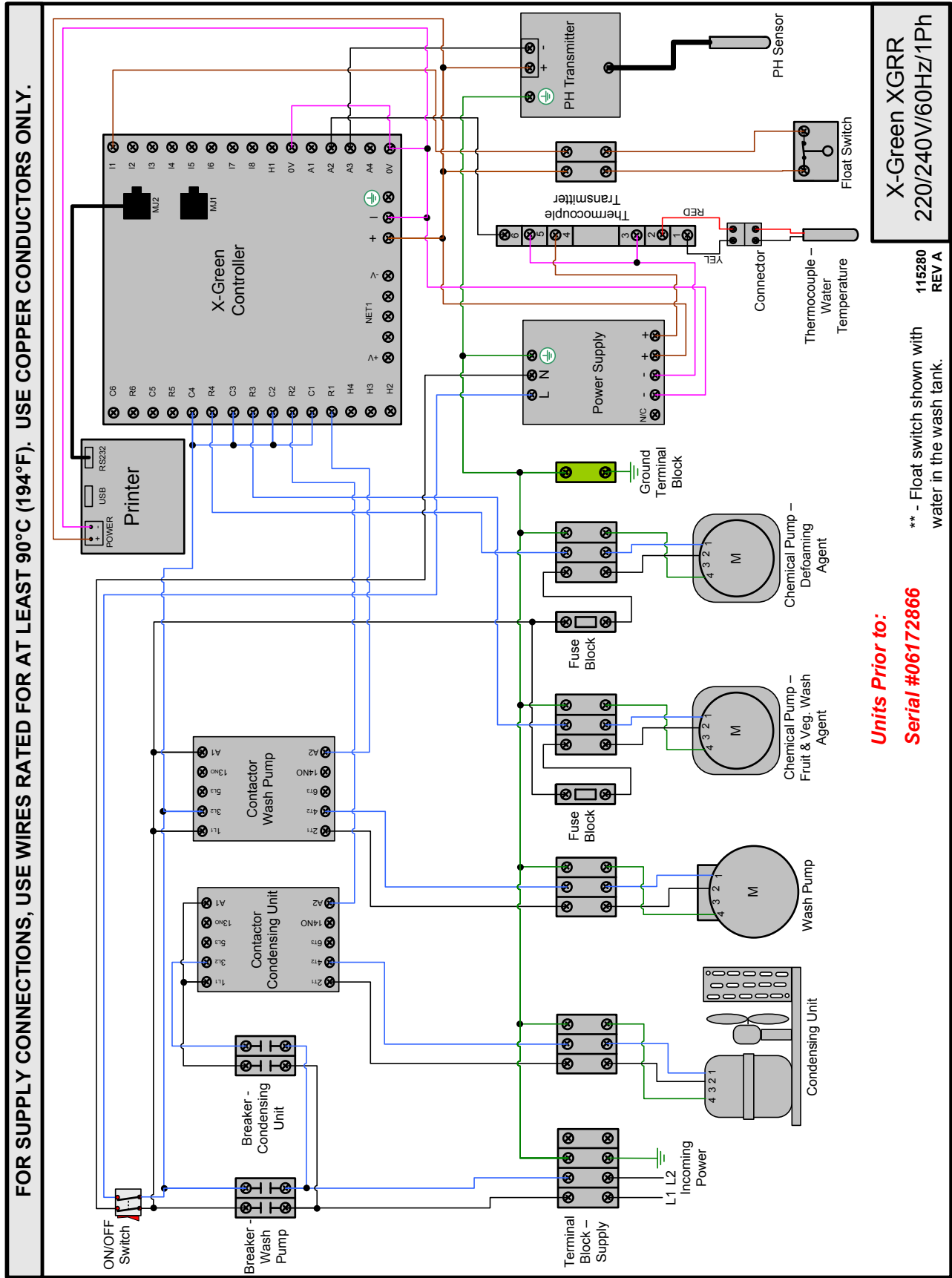


Figure: PL-4 MIXG, X-Green ICE, Right to Left

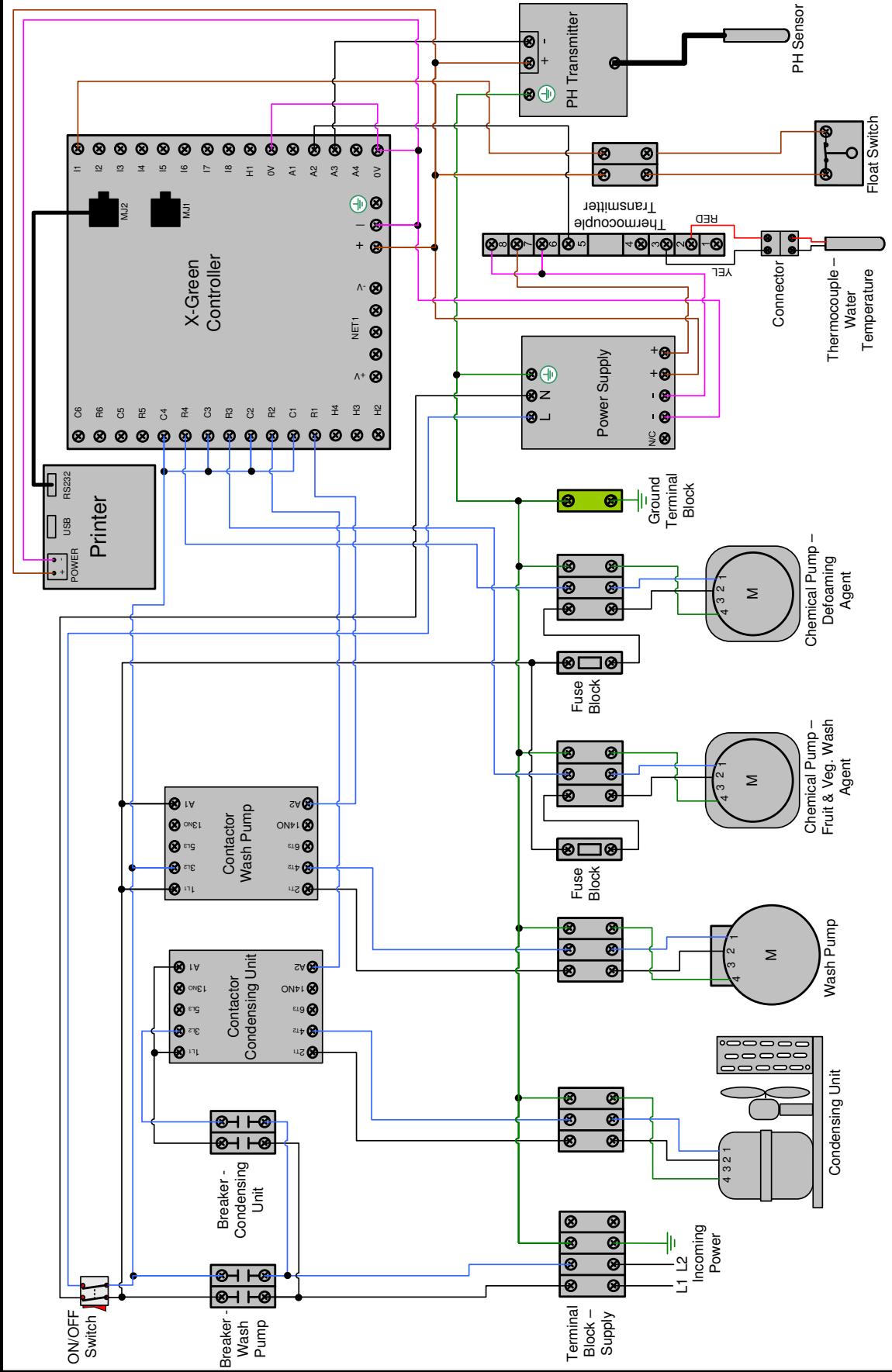
**MIXG, X-GREEN ICE RIGHT TO LEFT**

ITEM	P/N	DESCRIPTION	QTY
1	116026	SCREEN FLOAT TUBE	1
2	115436	COVER, DISCHARGE W/COUNTERSINK	1
3	116147	GASKET, COVER, DISCHARGE X-GREEN	1
4	115374	OWNERS MANUAL X-GREEN	1
5	115244	DRAIN, SINK, RINSE, SMALL 1-1/2"	1
6	10221550	NUT, 10-24 SS ELASTIC STOP	29
7	115106	WIRE TIE, 8"BLACK W/MTG HOLE	6
8	226715	BASKET, LARGE COARSE MESH	2
9	226724	LID, LARGE SIZE COARSE MESH DUKE-1815-LID	2
10	115939	ASSY, CTRL BOX RIGHT MIXG X-GREEN	1
11	116746	LABEL, pH SENSOR	1
12	116054	PANEL, BOTTOM FALSE MIXG	1
13	115937	ASSY, BASKET SCRAP MIXG X-GREEN	1
14	226708	COUPLING, SENSOR HOLDER D NON METALLIC	1
15	653031	NUT,10-24 CAP NICKEL PLATED	4
16	116078	ASSY, PLENUM COVER, RIGHT X-GREEN	1
NOT SHOWN	116445	BOLT, THERMOCOUPLE TYPE K	1
17	115122	PLUG, HEX HEAD 1/4" NPT	1
18	116027	HOLDER BASKET	1
19	116093	WELDMENT, SOAP CART	1
20	115036	SWITCH, FLOAT STRAIGHT MADISON M5910	1
21	115094	CONNECTOR, 4-POLE MALE	1
22	116682	ASSY, BOX FLOAT END XGRR	1
23	212201	CLAMP STRAP 3/4" 1 HOLE	1
24	116024	COVER BOX FLOAT END	1
25	279500	SCREW, 8-32 x 1/2" PTHMS 18-8SS	2
26	116757	ASSY, TRANSMITTER PH	1
27	116681	BRACKET, DRAIN LEVER XGRR	1
28	116008	ASSY, LEVER DRAIN, MODIFIED X-GREEN	1
29	116423	PAD,ANTI-VIBRATION, W/HOLSE	1
30	116159	ASSY, PUMP MOUNT, PEMS X-GREEN	2
31	226700	PUMP, CHEMICAL, 115V 60HZ A-16125-6/50000-656	2
32	115094	CONNECTOR, 4-POLE	2
33	226720	ELBOW, THD 1/2"	2
34	116092	ASSY, SHELF BASE RIGHT MIXG X-GREEN	1
35	226722	PUMP, .75HP, 115V 60HZ 3450 RPM	1
36	115302	ELBOW, PULL, 1/2", 90 DEG	1
37	115300	NIPPLE, 1-1/2" KING COMBO 316	2
38	115140	CLAMP, HOSE 2"-3" STAINLESS	4
39	116156	TUBE, 5", PUMP RETURN, TYGON 1.500 x 6.750 TYGON TUBE	1
40	115299	O-RING, 1.859 ID, 0.139 THICK MOD# 0568-225	1
41	115298	FITTING, 1-1/2" TAIL PIPE	1
42	116143	NUT, 1-1/2 BUTTRESS THREAD PVC	1
43	116157	TUBE,11", PUMP SUPPLY, TYGON 1.500 x 11.0 TYGON TUBE	1
44	226719	FAUCET, PRE-RINSE W/10" ADD-A-FAUCET	1
45	116085	ASSY, HANGER, SINK, MIXG	1
46	116083	ASSY, HANGER, TOP, MIXG	1
47	116021	GUARD INTAKE PUMP	1
48	116761	WALL CHART, X-GREEN	1
NOT SHOWN	227900	(1) GALLON ANTIFOAM, TRANS-20A 4 1-GAL. CONTAINERS/CASE--SO SPECS	1
NOT SHOWN	226716	LABEL, GREEN 58MM X CONT. P58LGRN (175 LABELS/RL)	1
NOT SHOWN	116146	ASSY, X-GREEN, PH SENSOR CALIBRATION	1
NOT SHOWN	600317	KIT, PH PROBE & SENSOR CALIBRATION	1
NOT SHOWN	227901	ANTIBACTERIAL, FIT, 5 GALLON	1

**Table: PL-4 MIXG, X-Green ICE, Right to Left**



**FOR SUPPLY CONNECTIONS, USE WIRES RATED FOR AT LEAST 90 °C (194 °F). USE COPPER CONDUCTORS ONLY.**

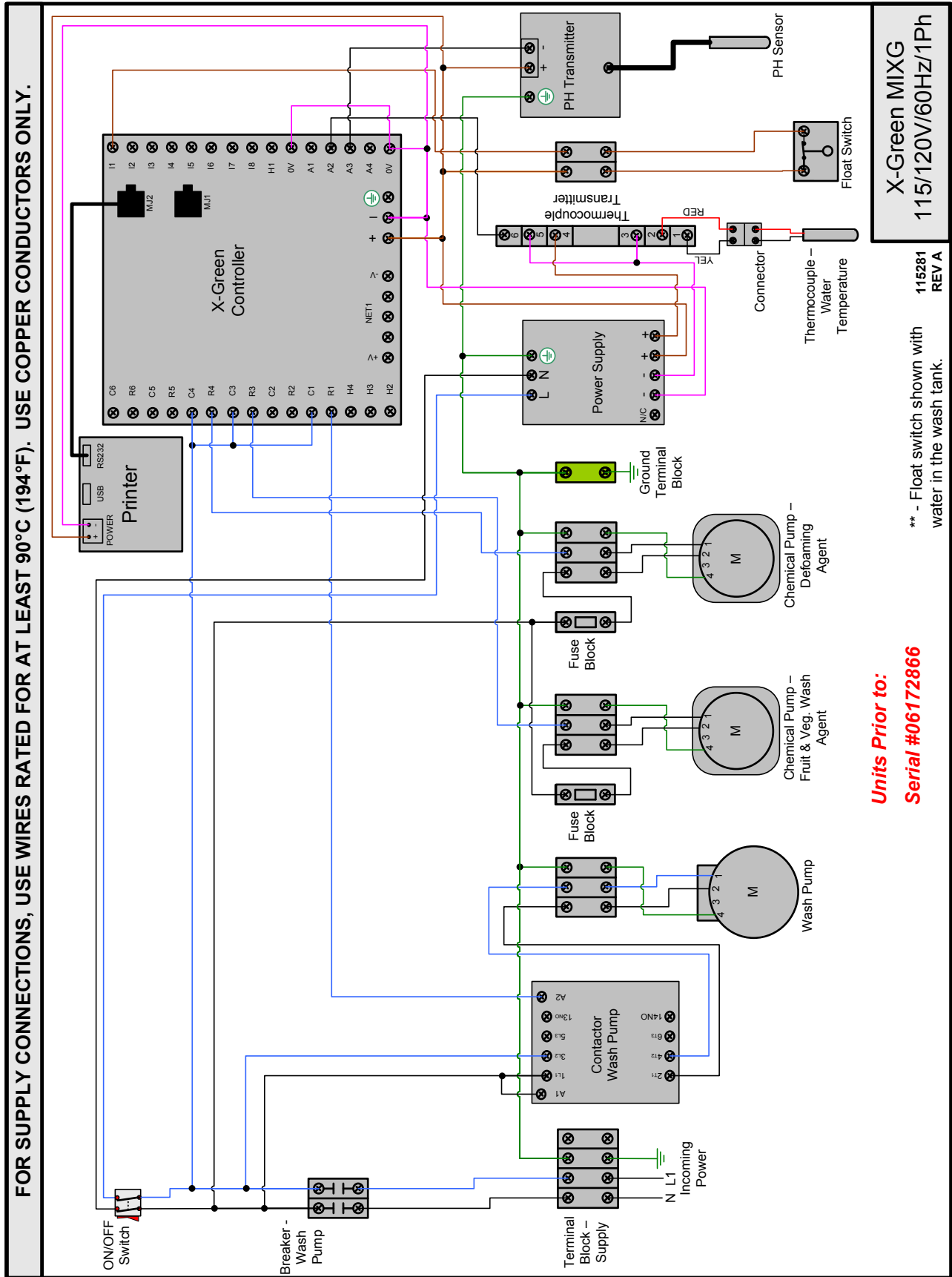


**X-Green XGRR**  
220/240V/60Hz/1Ph

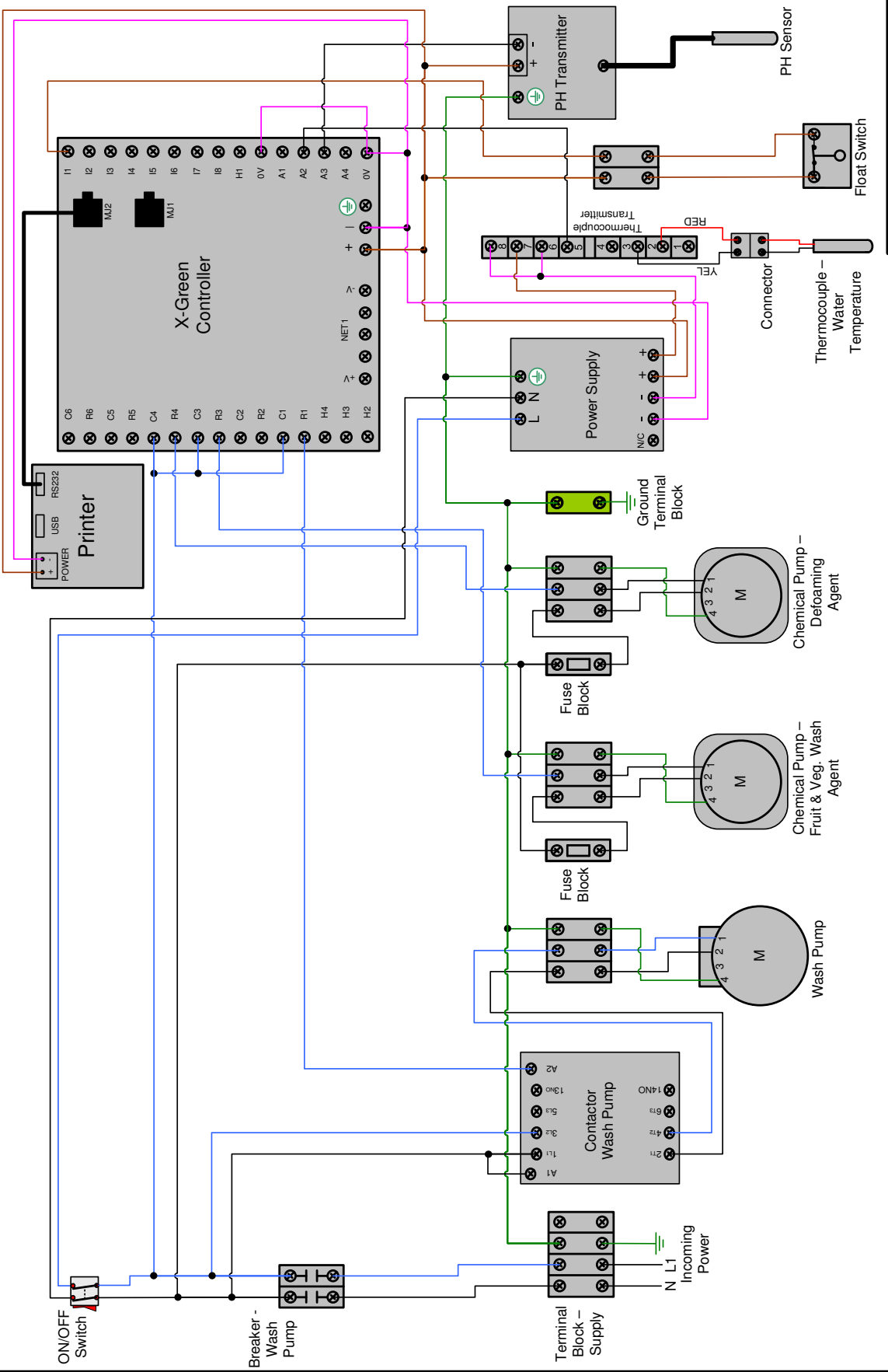
\*\* - Float switch shown with  
water in the wash tank.

**Units After:**  
**Serial #06172866**

115280  
REV B



**FOR SUPPLY CONNECTIONS, USE WIRES RATED FOR AT LEAST 90 °C (194 °F). USE COPPER CONDUCTORS ONLY.**

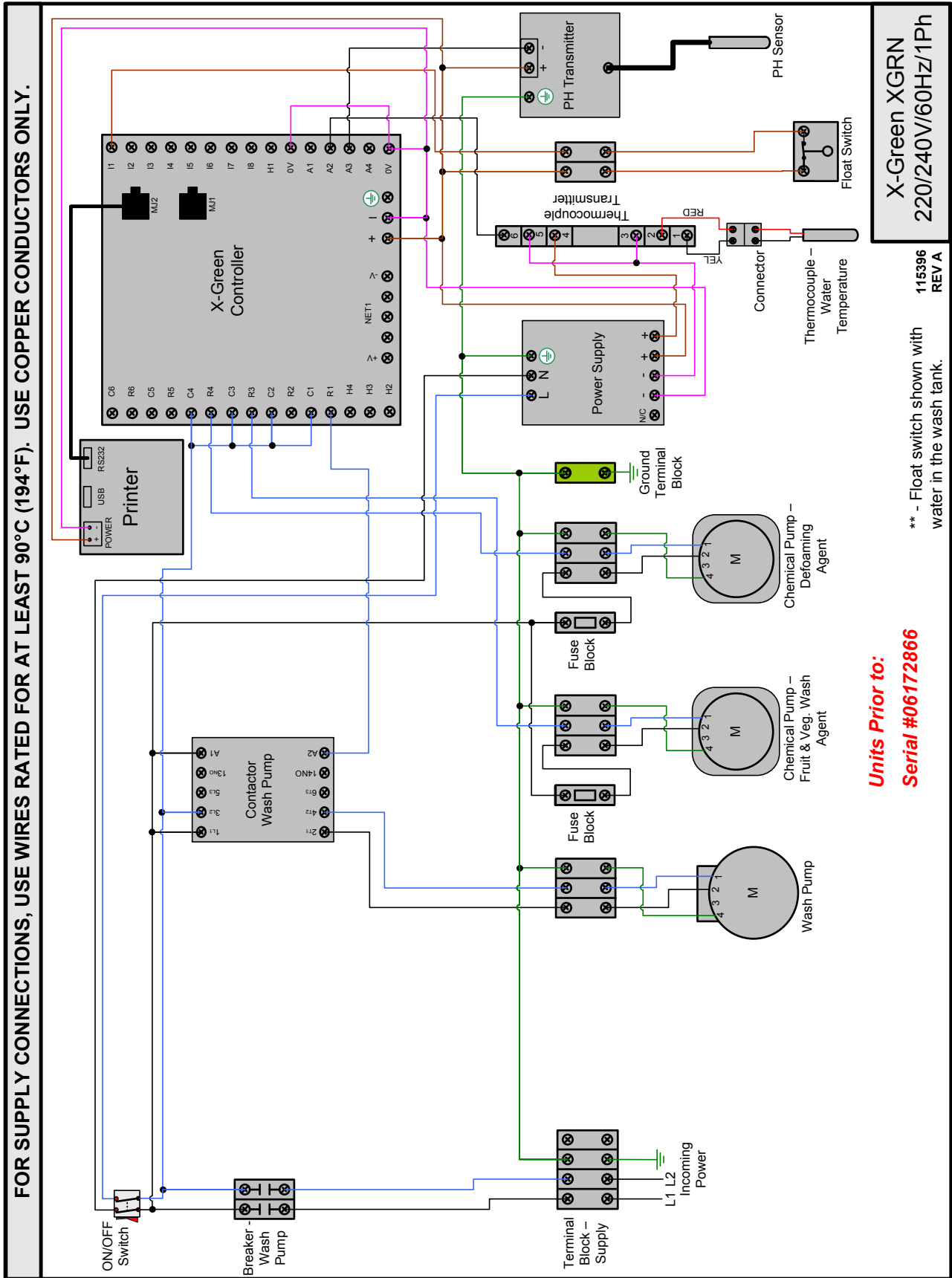


**X-Green MIXG**  
**115/120V/60Hz/1Ph**

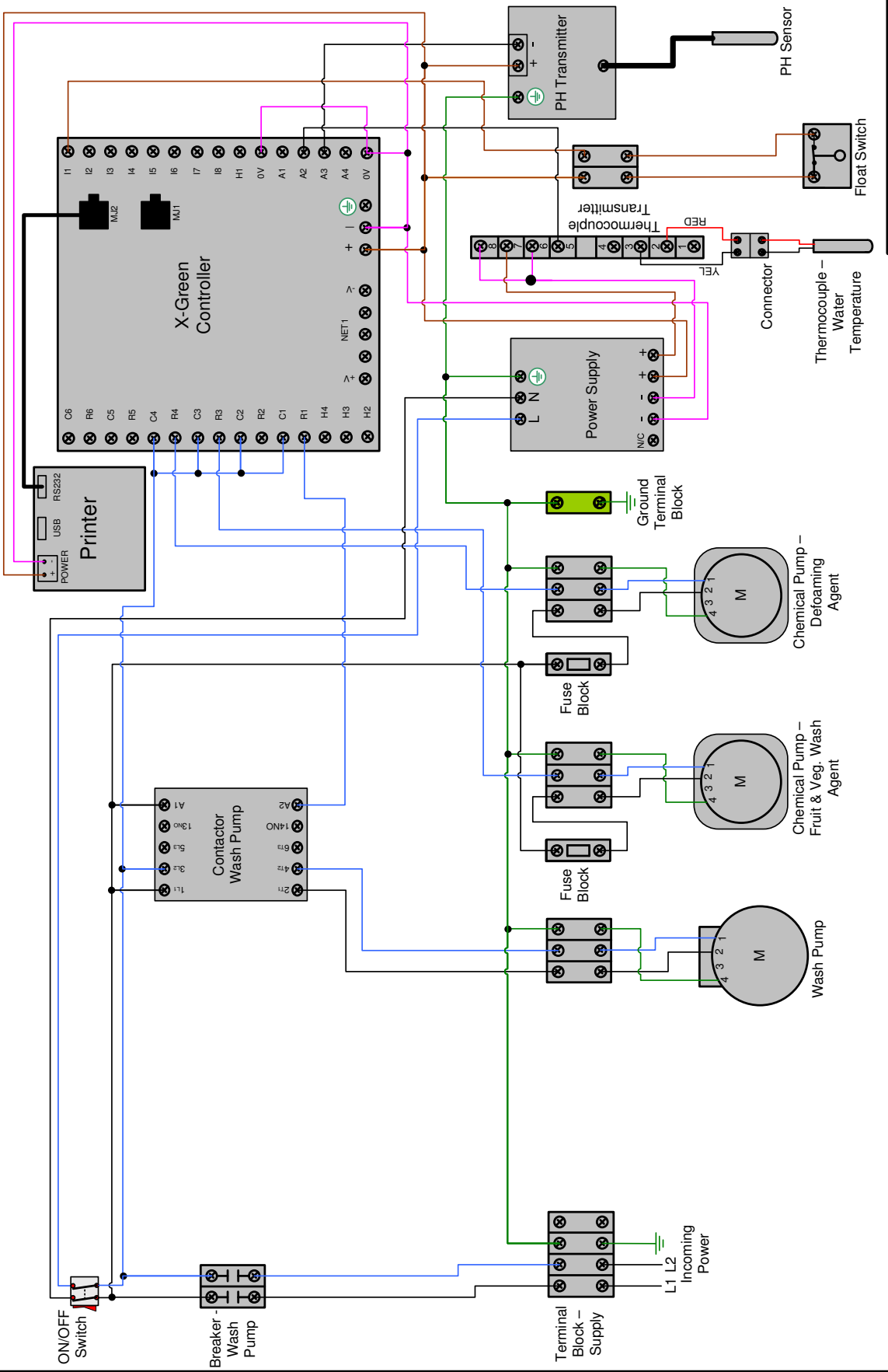
**Units After:**  
**Serial #06172866**

\*\* - Float switch shown with water in the wash tank.

115281  
 REV B



**FOR SUPPLY CONNECTIONS, USE WIRES RATED FOR AT LEAST 90 °C (194 °F). USE COPPER CONDUCTORS ONLY.**



**X-Green XGRN**  
**220/240V/60Hz/1Ph**

**Units After:**  
**Serial #06172866**

\*\* - Float switch shown with water in the wash tank.

115396  
 REV B



Your Solutions Partner

## **Duke Manufacturing Company**

**2305 N. Broadway  
St. Louis, MO 63102  
Phone: 314-231-1130  
Toll Free: 1-800-735-3853  
Fax: 314-231-5074  
[www.dukemfg.com](http://www.dukemfg.com)**