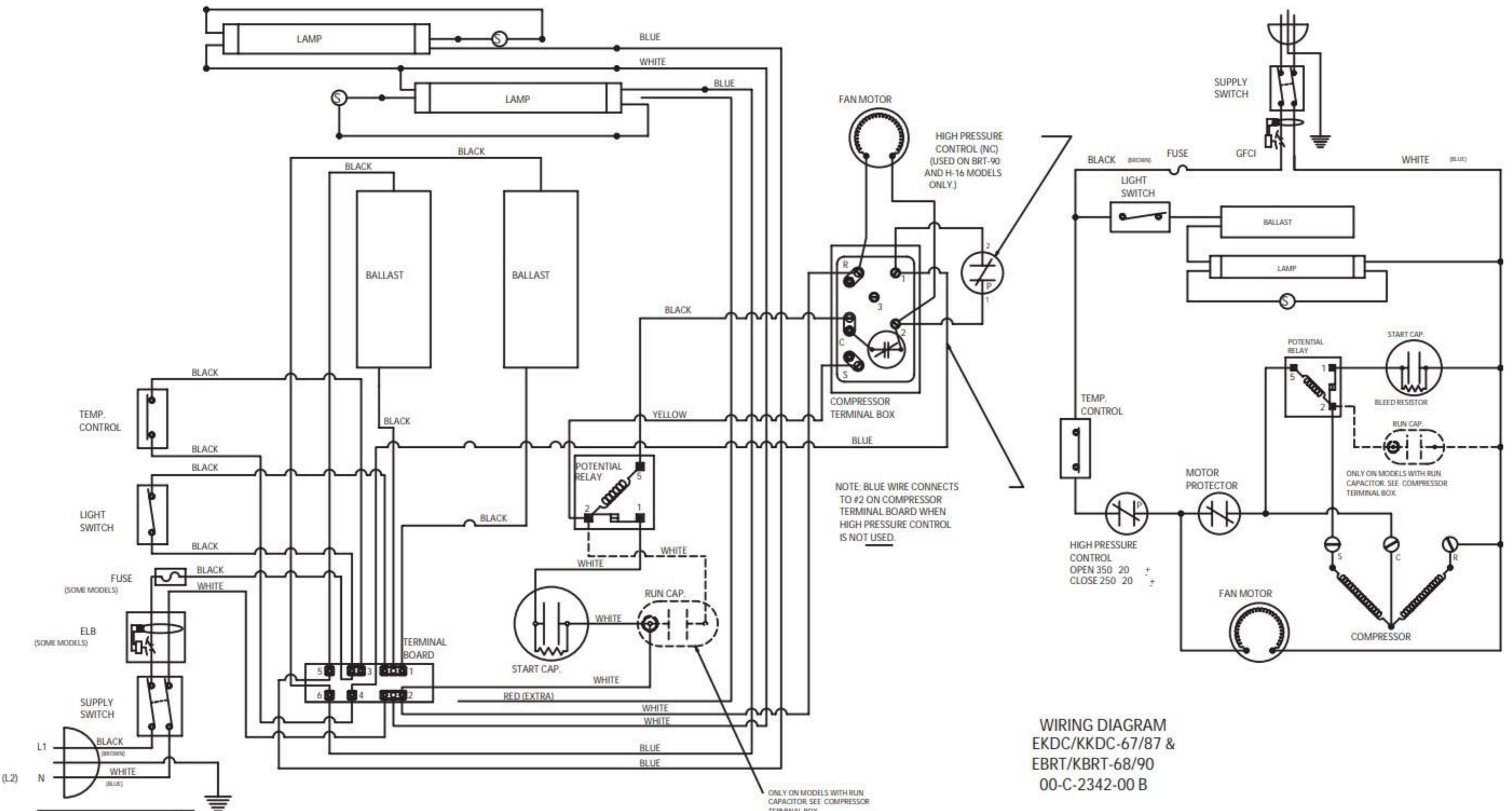


WIRE DIAGRAM
 KDC67/87-BRT68/90
 00-2368-00 Rev B



WIRING DIAGRAM
 EKDC/KKDC-67/87 &
 EBRT/KBRT-68/90
 00-C-2342-00 B

220 VAC, 60 Hz-10
 OR
 220 VAC, 50 Hz-10
 POWER SUPPLY FOR
 EXPORT MODELS ONLY
 SEE SERIAL PLATE FOR
 ELECTRICAL INFORMATION.

NOTE: BLUE WIRE CONNECTS
 TO #2 ON COMPRESSOR
 TERMINAL BOARD WHEN
 HIGH PRESSURE CONTROL
 IS NOT USED.

ONLY ON MODELS WITH RUN
 CAPACITOR. SEE COMPRESSOR
 TERMINAL BOX.

HIGH PRESSURE
 CONTROL
 OPEN 350 20 +
 CLOSE 250 20 +

ONLY ON MODELS WITH RUN
 CAPACITOR. SEE COMPRESSOR
 TERMINAL BOX.