



# CABINETS ECOSTORE

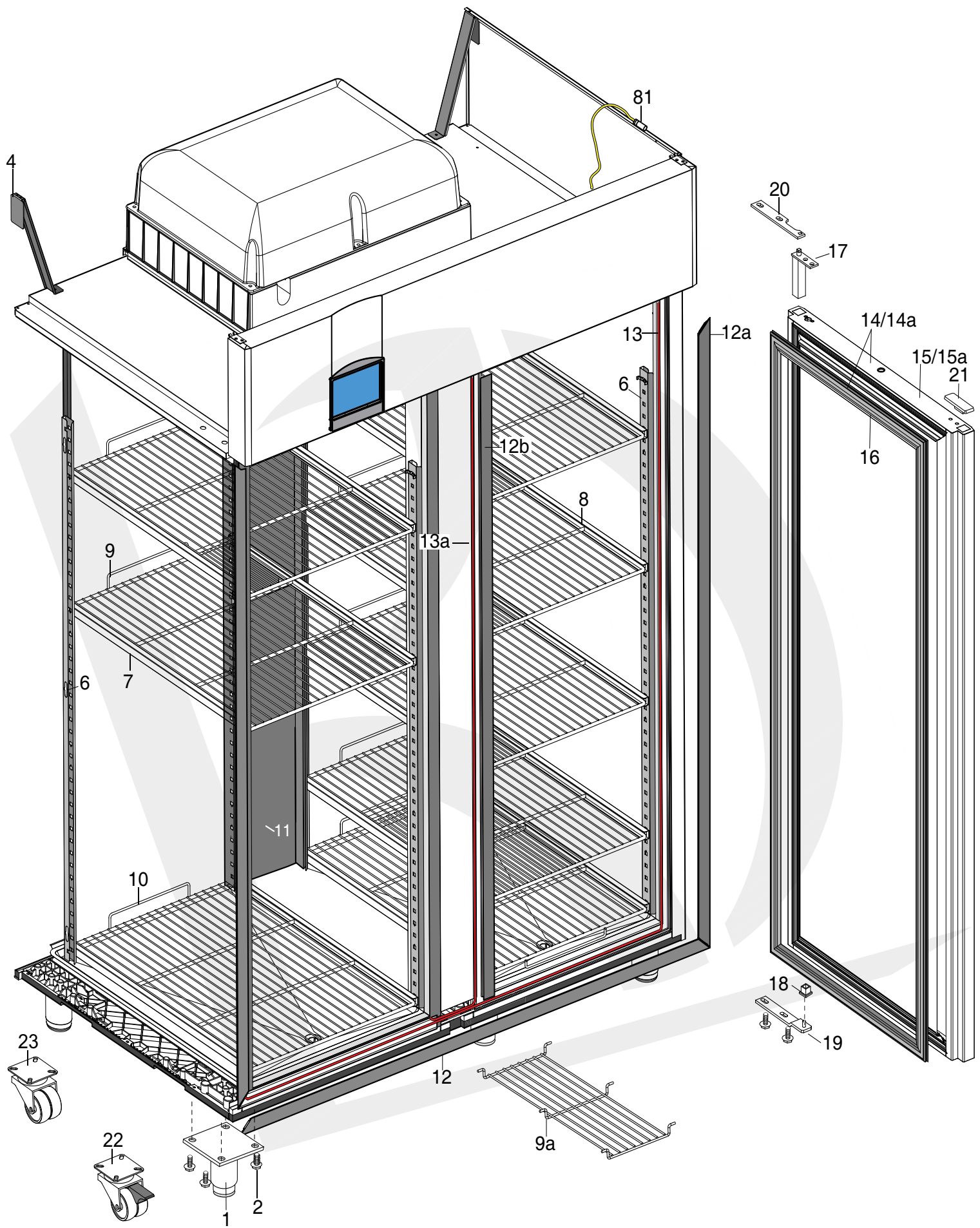
## SUPER PREMIUM

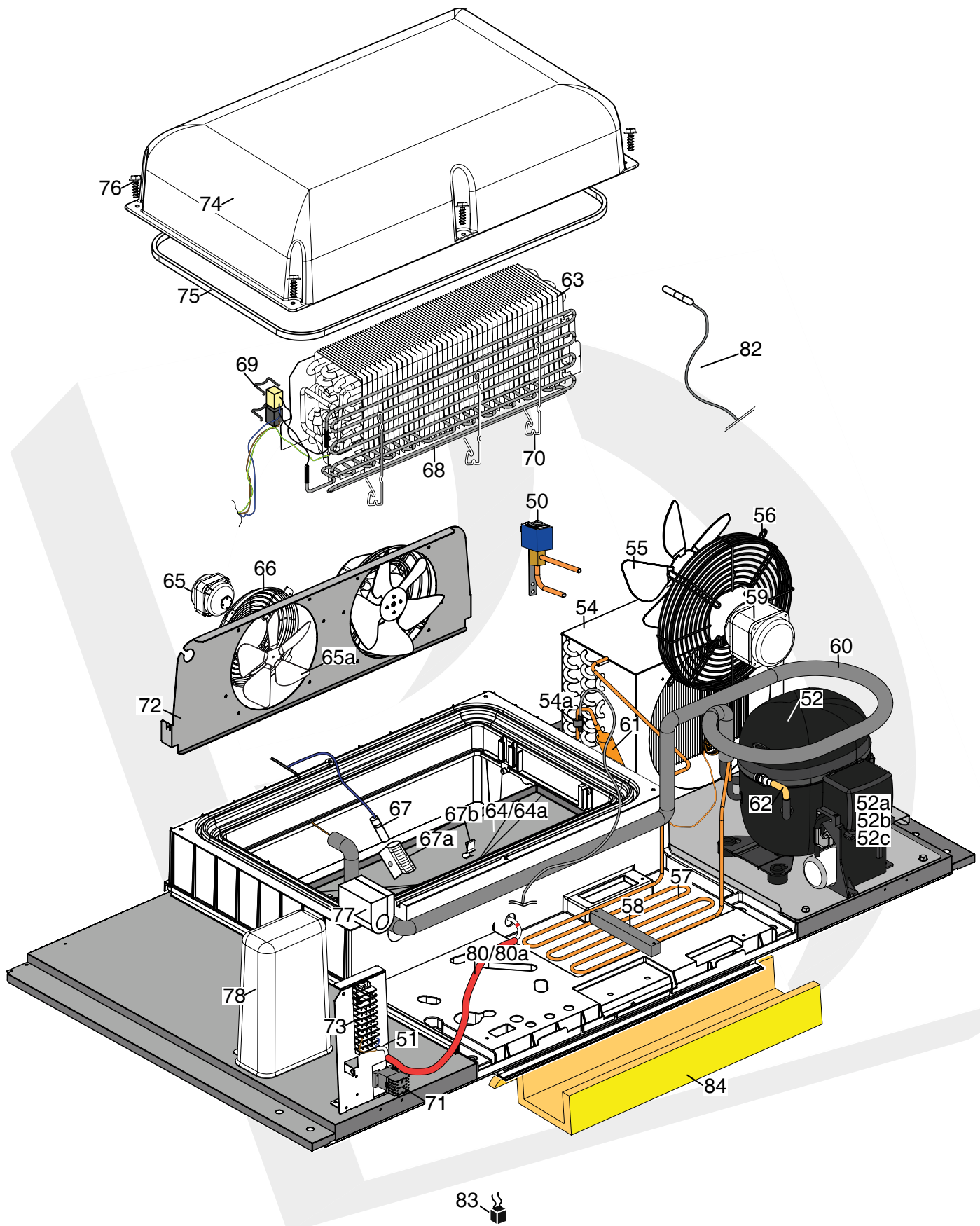
PNC	Avv. Model		Ref.	Page
727243	17/17	FV 2M SUPER PREMIUM FULL 304 SMART -15/-22 ELUX	a	2, 3, 4
727306	18/18	FV 2M SUPER PREMIUM R290 FULL 304 SMART -15/-22 ELUX	c	2, 3, 4
728625	17/17	FV 2M SUPER PREMIUM FULL 304 SMART -15/-22 APX	b	2, 3, 4
728668	18/18	FV 2M SUPER PREMIUM R290 FULL 304 SMART -15/-22 APX	d	2, 3, 4

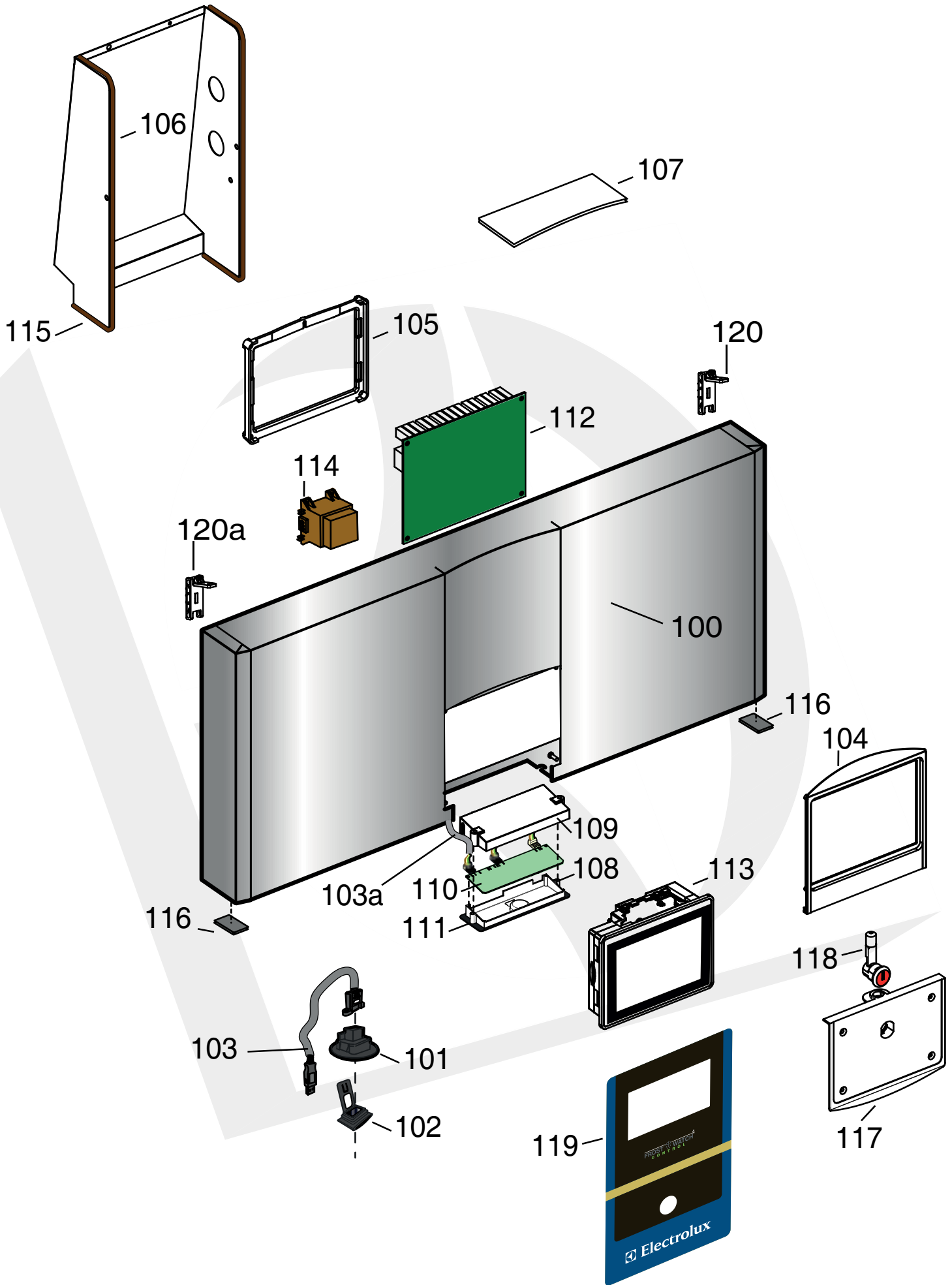
**Note:** per la corretta identificazione dei componenti, attenersi esclusivamente alle pagine indicate e alla lettera di riferimento.

**Note:** for the correct identification of the components, follow the indicated pages and the reference letter

Index		Indice	
Pag.	2	Cabinet and door	Armadio e porta
	3	Cooling unit assembly	Gruppo refrigerante
	4	Control panel	Pannello comandi
	5,6,7	Spare parts list	Lista ricambi







PNC	Ref.	PNC	Ref.	PNC	Ref.	PNC	Ref.	PNC	Ref.	PNC	Ref.	PNC	Ref.
727243	a	728625	b	727306	c	728668	d						
Pos	Spare parts code	Factory code	Descrizione				Description				Ref - Note		
1	93243	541R05001	Piedino				Foot						
2	93245	217555204	Vite per plastica per piedino				Screw ( use by fix foot)						
4	93394	502R17500	Staffa supporto fianchi				Side support						
6	93355	501R36201	Cremagliera anteriore/posteriore				Front and Back Rack						
7	93358	501R48000	Guida Sx				Left support						
8	93359	501R48200	Guida Dx				Right support						
9	93360	514R10700	Griglia 2/1 aisi 304				Grid 2/1 aisi 304						
9a	93397	514R11701	Griglia centrale				Central grid rilsan						
10	93296	514R12100	Griglia di fondo aisi 304				Bottom grid aisi 304						
11	093497	501R61700	Supporto centrale post. cremagliere				Central back rack rupport						
12	093545	832R09202	Cornice orrizzontale				Orrizzontal frame						
12a	093255	832R09101	Cornice verticale				Vertical frame						
12b	093399	832R09401	Cornice verticale montante				Vertical frame central support						
13	093400	617R06800	Cavo riscaldante cornice				Heating cable frame						
13a	093419	617R07000	Cavo riscaldante cornice 6,39W				Heating cable frame 6,39W						
14	*	835R25600	Porta con guarn. cern.e masch. sx				Gasket, hinge, template and door (left)						
14a	093503	835R26901	Porta con guarnizione e cerniere dx				Gasket, hinge and door (right)						
15	*	835R25700	Porta sx per mascherina				Door (left) for template						
15a	093504	835R26700	Porta dx				Door (right)						
16	93257	549R05802	Guarnizione porta pv/pc				Gasket door ( gl/fl)						
17	082219	835704001	Cerniera porta				Hinge door						
18	081654	544700001	Boccola per porta				Door bush						
19	093341	833R21600	Staffa inferiore porta				Lower stirrup door						
20	082257	505723802	Staffa superiore porta				Upper stirrup door						
21	093271	541R05300	Tappo per cerniere				Hole hinge plug						
50	093435	646R10501	<b>Elettrovalvola 6W 220/23V</b>				<b>Solenoide valve</b>				<b>Up to 4151...</b>		
50	094435	646R10502	<b>Elettrovalvola 6W 220/23V</b>				<b>Solenoide valve</b>				<b>From 4161...</b>		
51	*	501R66001	Supporto impianto elettrico				Electrical wiring support						
52	093403	684R05500	Compressore NT2212GK				Compressor NT2212GK				a,b		
52a	*	*	Relè avviamento				Start relay ( EMT6170ZA)				a,b		
52b	*	*	Protettore				Protector ( EMT6170ZA)				a,b		
52c	*	*	Condensatore di avviamento				Start capacitor ( EMT6170ZA)				a,b		
52	093423	684R06000	Compressore NT2210U R290220-40V/50HZ				Compressor EMT6152U R290220-40V/50HZ				c,d		
52a	*	*	Relè avviamento				Start relay EMT6152U				c,d		
52b	*	*	Protettore				Protector EMT6152U				c,d		
52c	*	*	Condensatore di avviamento				Start capacitor EMT6152U				c,d		
54	093404	830R05000	Condensatore				Condenser				a,b		
54	093404	830R05000	Condensatore				Condenser				c,d		
54A	093539	646R11700	Sonda condensatore				Probe condenser						
55	084780	511704600	Ventola 230-34 (ebm)				Ventola 230-34(ebm)						

PNC	Ref.	PNC	Ref.	PNC	Ref.	PNC	Ref.	PNC	Ref.	PNC	Ref.	PNC	Ref.
727243	a	728625	b	727306	c	728668	d						

Pos	Spare parts code	Factory code	Descrizione				Description				Ref - Note
56	092651	514R07500	Protezione ventola				Fan protection				
57	*	515R13001	Serpentina evap. acqua di condensa				Evaporation water pipe				
58	093360	543R09300	Fissaggio serpentina				Stopper pipe				
59	093420	682R06000	Ventilatore condensatore (ebm)				Condenser ventialtor (ebm)				
60	093571	858R06501	Scambiatore				Heat exchanger				a,b
60	*	858R07100	Scambiatore				Heat exchanger				c,d
61	084078	805729802	Filtro				Dehidrator filter				
61	084078	805729802	Filtro				Dehidrator filter				c,d
62	0A9459	845708500	Valvola per compressore				Compressor valve (charge or disch.)				
63	093408	830R04301	Evaporatore 5R 8T				Evaporator 5R 8T				
64	*	501R45201	Vaschetta evaporatore				Evaporator tray				
64a	93409	548R07200	Isolante per vaschetta evaporatore				Evaporator tray insulation				
<b>65</b>	<b>093410</b>	<b>682R06500</b>	<b>Ventilatore evaporatore (ebm)</b>				<b>Evaporator fan (ebm)</b>				<b>Up to 5051...</b>
<b>65</b>	<b>094487</b>	<b>682R08700</b>	<b>Ventilatore evaporatore (ebm)</b>				<b>Evaporator fan (ebm)</b>				<b>From 5061...</b>
65a	093411	511R01100	Ventola				Fan				
66	093412	514R12300	Griglia evap.				Fan protection				
67	092177	646R07200	Sonda cella				Cell probe				
67a	091061	646R07500	Gabbietta per sonda				Probe protection				
67b	093547	514R12900	Fermo per cavo riscaldante				Stopper/spring for heating cable				
68	093413	617R06300	Resistenza con termostati				Heating element with thermostat				
69	093487	514R11600	Molla per fissaggio termostati				Thermostat spring				
70	093548	514R109000	Molla per fissaggio resistenza				Heating element spring				
71	88557	646R27100	Teleruttore				Contactor				
72	093314	501R44801	Convogliatore evaporatore				Evaporator conveyor A304				
73	093599	639R10000	Morsettiera				Clamp				
74	093261	835R04100	Assieme Calotta				Evaporator cover				
75	093262	14701R003	Neoprene espanso 8x13,3 nero (M4)				Gasket cover ( neoprene 8x13,3)				
76	093245	217355204	Vite senza punta x plastica				Cover screw				
77	093263	546R19702	Tamponcino per tubi				Pipe cover insulation				
78	093264	541R04801	Copertura impinto elettrico				Wiring cover				
80	93415	617R07800	Resistenza scarico condensa				Drain heating				
80a	93416	110067013	Guaina per resistenza scarico con.				Drain heating cable protection				
81	093371	646R11700	Sonda ambiente				Ambient probe				
82	093531	646R12000	Sonda evaporatore				Evaporator probe				
83	84987	694700800	Filtro proc.				Filter proc.				
84	*	559R01900	Coibentazione carter				Air blanketing				
99	*	880R12405	Cruscotto senza mascherina A304				Panel without template A304				
100	*	509R15401	Cruscotto comandi				Panel 304 AISI				
101	*	546400200	Supporto/vaschetta usb				USB support				
102	*	541400A00	Copertura usb				Usb Cover				
103	*	635R19400	Prolunga usb L1000				Usb extention L=1000				
103a	093706	635R19900	Cablaggio di conness. per touch panel				Complete wiring for touch panel				

PNC	Ref.	PNC	Ref.	PNC	Ref.	PNC	Ref.	PNC	Ref.	PNC	Ref.	PNC	Ref.
727243	a	728625	b	727306	c	728668	d						

Pos	Spare parts code	Factory code	Descrizione	Description	Ref - Note
104	*	546R20700	Pannello frontale cruscotto	Front control panel	
105	*	546R20800	Cornice chiusura pannello frontale	Frame front control panel	
106	*	501R43801	Protezione posteriore	Back protection control panel	
107	*	548R07701	Guarnizione cruscotto	Gasket	
108	093386	546R19501	Supporto scheda led	Support led-lamp	
109	093387	546R19600	Protezione scheda led	Protection led-lamp	
110	093389	648R05000	Scheda led	Led-lamp board	
111	093390	569R05900	Guarnizione per cheda led	Ledlamp board gasket	
112	093540	648R05400	Scheda di potenza	Main power	
113	*	648R06100	Touch panel	Touch panel	
114	087662	624711702	Trasformatore 230/24	Voltage adaptor 230/24	
115	0L0113	140088006	Guarnizione marrone	Brown gasket	
116	093271	541R05300	Tappo fori	Plug hole	
117	*	546R20900	Mascherina porta/serratura	Door/lock template	
*	087532	514741800	Vite per mascherina M4x8	Screws for template M4x8	
118	093433	833R21100	Serratura	Latch	
119	*	755R05800	Membrana cruscotto	Stiker/membrane	a,c
119	*	755R05900	Membrana cruscotto	Stiker/membrane	b,d
120	093609	832R10100	Cerniera per cruscotto dx	Hinge for panel "Right"	
120a	093610	832R10200	Cerniera per cruscotto sx	Hinge for panel "Lefth"	