



# Replacement Parts

## List EmberGlo® Steamer Models ES5CT & ES5CT18

*Tap Water Operation  
Designed to Operate  
Without Distilled Water  
Direct Water Supply Hookup*



Automatic Timer/Push Button Operation  
Steamer with Direct Water Hookup

Installation and Service Manual - 8449-96

Date Code - Cubic Style Timer Models  
ES5CT, ES5CT18 - first construction January 2014

Replacement Model numbers for Old Style Timer Models, that are no longer manufactured are replaced with the Cubic Style Timer:

ES5T is replaced with ES5CT  
ES5T18 is replaced with ES5CT18

<i>Models</i>	<i>Description</i>	<i>Volts</i>	<i>BOMs</i>
<i>1500W</i>			
ES5CT	Timer Operation with Direct Water Connect	120V	5400751
ES5CT	Timer Operation with Direct Water Connect	240V	5400753
<i>1800W</i>			
ES5CT18	Timer Operation with Direct Water Connect	120V	5400752

Items listed in this document are replacement parts for the current Models ES5CT & ES5CT18 tap water, direct connect steamers and its components.

- EmberGlo Steamers do not require a separate hood for vapor produced during operation according to the Uniform Mechanical Codes per the International Conference of Building Officials Code.



**EmberGlo®**

EmberGlo  
A Div of Midco® International Inc.  
4140 West Victoria Street  
Chicago, Illinois 60646  
toll free 866.705.0514  
tel 773.604.8700  
fax 773.604.4070  
web www.emberglo.com  
e-mail sales@emberglo.com

**AVOID ERROR IN PARTS SELECTION.** When ordering use complete MIDCO Part Number and Description. Furnish Burner Model Number, Bill of Material Number and Serial Number (if available) from the specification plate found on the product.

**IMPORTANT:** Availability of parts as well as specifications are subject to change without notice. Please consult factory for item availability.

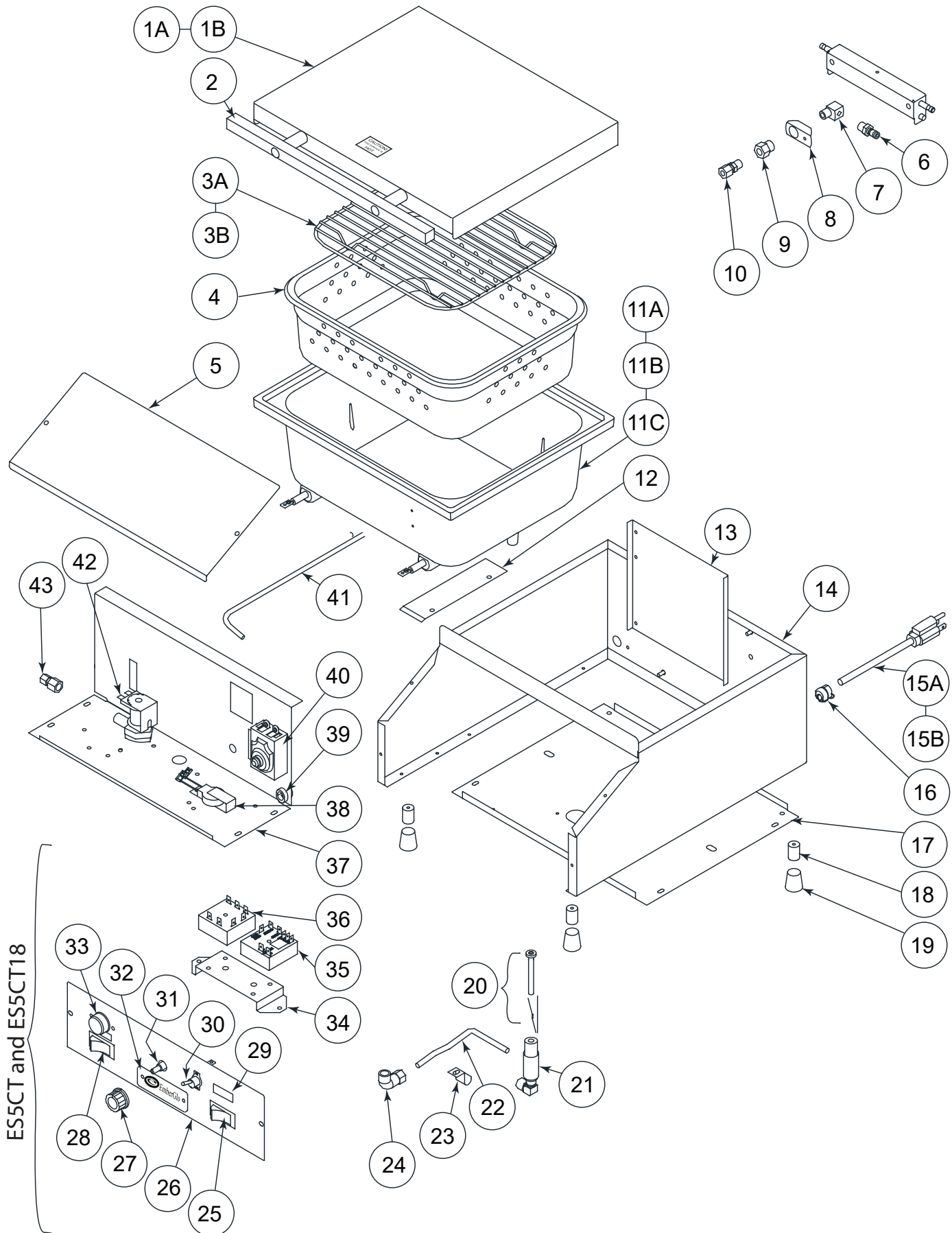


*As an ISO 9001:2008 certified company, we proudly design, manufacture and assemble our products in Chicago, Illinois, USA.*

*Quality Designed for Proven Performance*

825  
8472 53  
Printed in USA

# ES5CT & ES5CT18 - Isometric View



ES5CT and ES5CT18

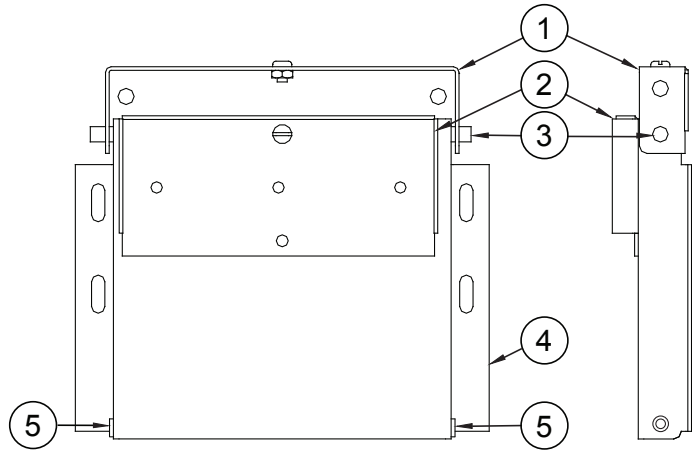


# ES5CT & ES5CT18 - Replacement Parts

## ADJUSTABLE HINGE FOR 2-POSITION LID OPENING (60° OR 90° OPEN)

First construction January 29, 1990 (date code 0590). Steamers built before this date featured a 90° opening lid. Replacement parts for the early construction are no longer available. When replacing order Part Number 1421-45 ADJUSTABLE HINGE RETROFIT KIT.

Part # or Item #	Description	Qty
1	Adjustable Upper Hinge	1
2	Lid Stop Rivetment	1
3	Upper Hinge Bar	1
4	Adjustable Lower Hinge	1
5	5/16" x 3/16" O-Ring	2
Not Shown - (Sold Separately)		
1420-00	Spring bar	2
1420-40	ES5 Hinge Spring	2



*As an ISO 9001:2008 certified company, we proudly design, manufacture and assemble our products in Chicago, Illinois, USA.*

EmberGlo - A Division of Midco International - 4140 West Victoria Street - Chicago, Illinois 60646

toll free: 866 705 0515 - tel: 773.604.8700 - fax: 773.604.4070 - web: [www.emberglo.com](http://www.emberglo.com) - e-mail: [sales@emberglo.com](mailto:sales@emberglo.com)

825  
8472 53  
Printed in USA