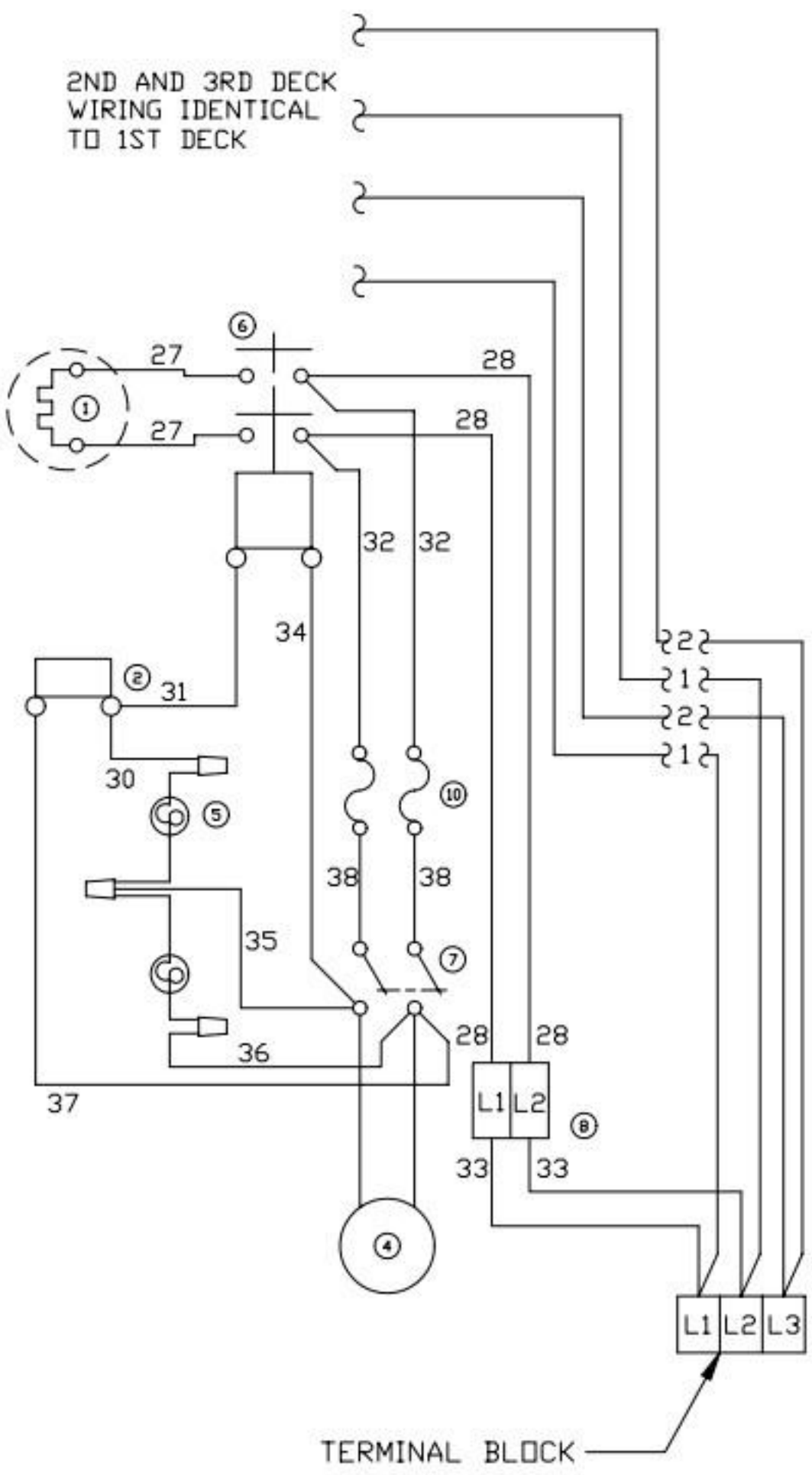


REVISION BLOCK						
REV	ECN NO.	DESCRIPTION	DR:	MFG	ENG	DATE

OVEN WIRING



MODEL DESIGNATION	TOP ARRANGEMENT			TOP SECTION WIRE DIAGRAMS		
	SEC-1	SEC-2	SEC-3	A	B	C
RF219-A	A	A	C			
RF219-C	B	B	B			
RF219-D	B	B	C			
RF219-G	A	A	A			
RF219-H	C	C	C			
① HEAT ELEMENT						
② THERMOSTAT						
③ 6 HEAT SWITCH						
④ MOTOR						
⑤ PILOT LAMP						
⑥ CONTACTOR						
⑦ POWER SWITCH						
⑧ CIRCUIT BREAKER						
⑨ SPEED UNIT						
⑩ FUSE						

CONNECT WIRES FROM RANGE TOP OR ADDITIONAL DECKS TO LOWER OVEN TERMINAL BLOCK AS SHOWN AT RIGHT

ELECTRICAL CONNECTIONS					
POWER SUPPLY	TERMINAL BLOCK	RANGE TOP	OVEN		
			1st DECK	2nd DECK	3rd DECK
SINGLE PHASE	L1	1-3-5	1	1	1
	L2	2-4-6	2	2	2
THREE PHASE	L1	3	1	1	-
	L2	1-5	2	-	1
	L3	2-4-6	-	2	2

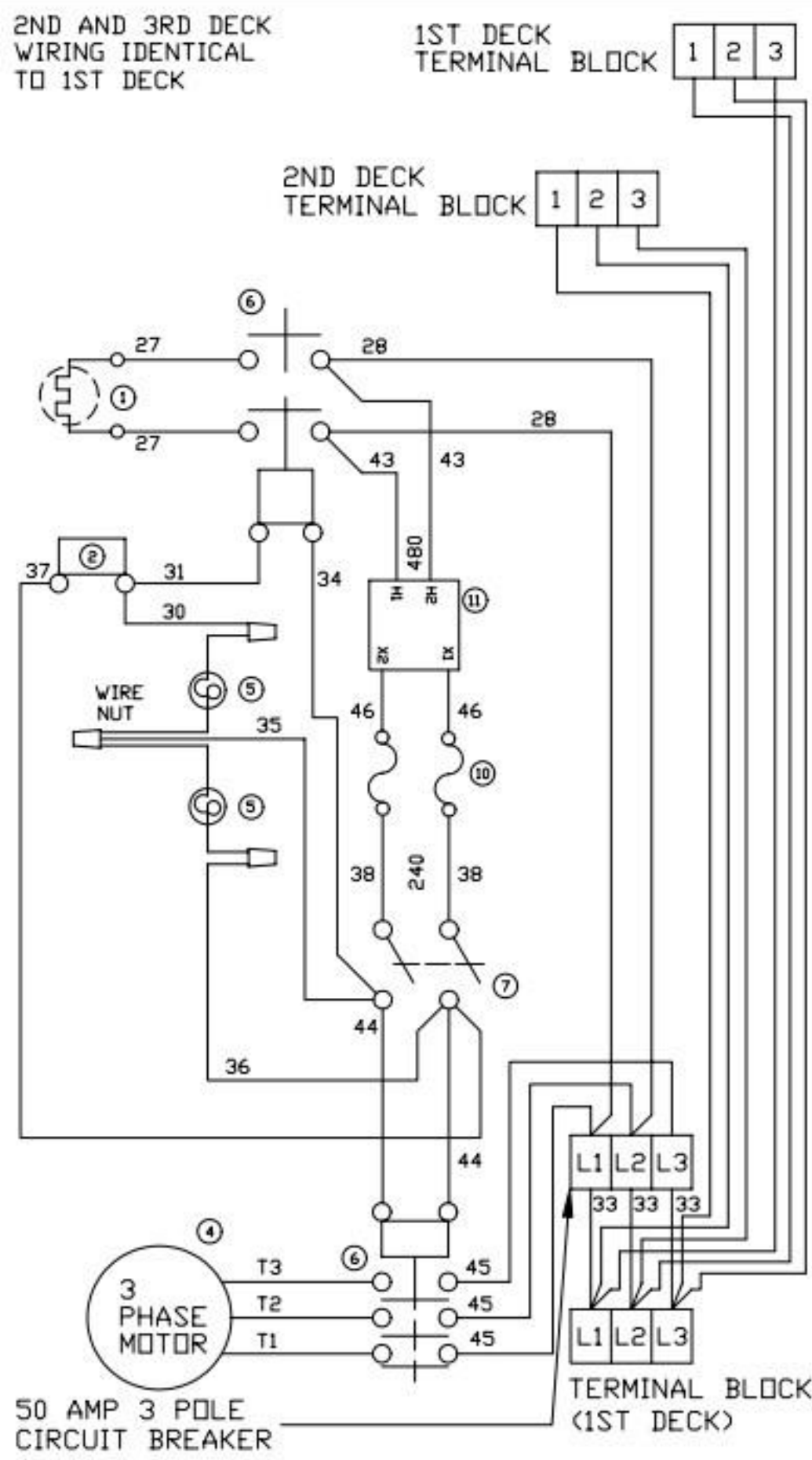
MODEL NUMBER	LOADING					KW TOTAL	THREE PHASE AMPS						SINGLE PHASE AMPS	
	KW PER PHASE						208 VOLT			240 VOLT			208V	240V
	L1	L2	L2	L3	L3		L1	L2	L3	L1	L2	L3		
RF-21S	6.6	10.0	5.0	21.6	48.3	69.2	62.5	41.9	59.9	54.2	103.8	90.0		
1F-6S	6.6	0.0	0.0	6.6	31.7	31.7	00.0	27.5	27.5	0.0	31.7	27.5		
2F-6S	6.6	0.0	6.6	13.2	55.0	31.7	31.7	47.7	27.5	27.5	63.5	55.0		
3F-6S	6.6	6.6	6.6	19.8	55.0	55.0	55.0	47.7	47.7	47.7	95.2	82.5		

USE ON ALL E SERIAL NUMBERS

QTY	ITEM	PART NUMBER	DESCRIPTION / MATERIAL
LANG MANUFACTURING			
DR: SRC DATE: 2-1-84		TITLE: CONVECTION OVEN / RANGE	
CK: DATE:		208/240 VAC	
<small>TOLERANCES FRACTIONS DECIMALS ± 1/64 .X ± .05 ANGLES .XX ± .03 ± .5° .XXX ± .015 UNLESS OTHERWISE SPECIFIED DIMENSIONS ARE IN INCHES</small>			
SCALE: TO FIT		NEXT HIGHER ASSY. SHEET	DRAWING NUMBER REV
		1 OF 1	61105-13 A

REVISION BLOCK						
REV	ECN NO.	DESCRIPTION	DR:	MFG	ENG	DATE

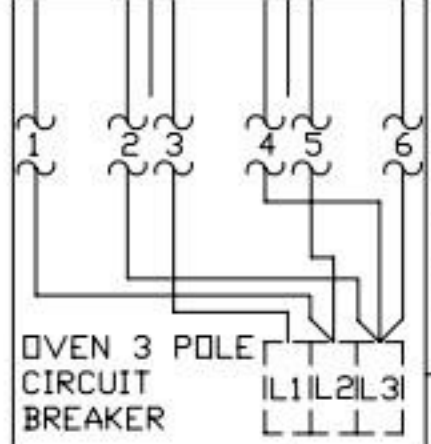
OVEN WIRING



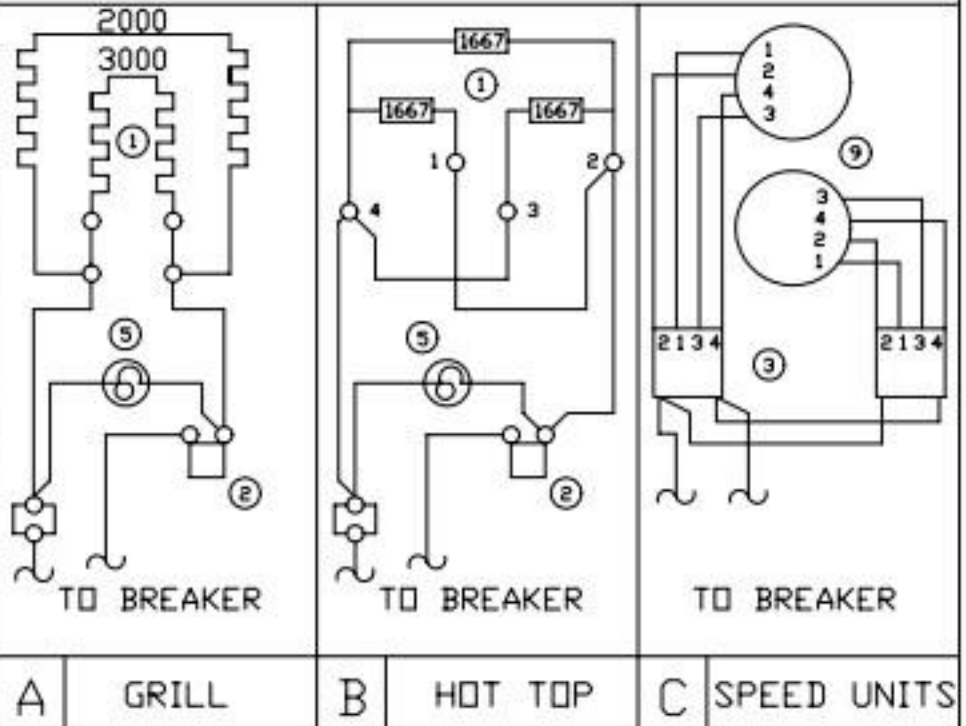
MODEL DESIGNATION TOP ARRANGEMENT

MODEL DESIGNATION	TOP ARRANGEMENT		
	SEC-1	SEC-2	SEC-3
RF21S-A	A	A	C
RF21S-C	B	B	B
RF21S-D	B	B	C
RF21S-G	A	A	A
RF21S-H	C	C	C

- ① HEAT ELEMENT
- ② THERMOSTAT
- ③ 6 HEAT SWITCH
- ④ MOTOR
- ⑤ PILOT LAMP
- ⑥ CONTACTOR
- ⑦ POWER SWITCH
- ⑨ SPEED UNIT
- ⑩ FUSE
- ⑪ TRANSFORMER



TOP SECTION WIRE DIAGRAMS



CONNECT WIRE FROM RANGE TOP TO OVEN CIRCUIT BREAKER. CONNECT WIRES FROM ADDITIONAL DECKS TO LOWER OVEN TERMINAL BLOCK

ELECTRICAL CONNECTIONS

POWER SUPPLY	RANGE TOP CONNECT TO OVEN CIRCUIT BREAKER	UPPER OVENS CONNECT TO BOTTOM DECK TERMINAL BLOCK		
		1st DECK	2nd DECK	3rd DECK
THREE PHASE	L1	3	1	2
	L2	1-5	2	3
	L3	2-4-6	3	1

CONVECTION OVEN/RANGE ELECTRICAL DATA

MODEL NUMBER	LOADING KW/PHASE					TOTAL CONN. LOAD	AMPS THREE PHASE 480 VAC		
	L1 L2		L2 L3		L3 L1		L1	L2	L3
	L1	L2	L2	L3	L3				
RF-21S	6.2	10.2	5.2	21.6	20.1	29.5	27.7		
1F-6S	6.2	0.2	0.2	6.6	13.2	13.2	.66		
2F-6S	6.4	0.4	6.4	13.2	23	13.9	13.9		
3F-6S	6.6	6.6	6.6	19.8	23.6	23.6	23.6		

CAUTION: CHECK OVEN FOR PROPER DIRECTION OF FAN ROTATION

CHANGE PHASING OF POWER IF NECESSARY TO CORRECT

USE ON ALL E SERIAL NUMBERS

QTY	ITEM	PART NUMBER	DESCRIPTION / MATERIAL
LANG MANUFACTURING			
DR: 580 DATE: 2-1-94		TITLE: CONVECTION OVEN RANGE	
CK: DATE:		480 VAC 3Ph	
TOLERANCES		NEXT HIGHER ASSY. SHEET	
FRACTIONS DECIMALS		DRAWING NUMBER	
1/64 .005		61105-10	
1/32 .010		REV	
1/16 .015		A	
.0315 .002		SCALE: TO FIT	
UNLESS OTHERWISE SPECIFIED DIMENSIONS ARE IN INCHES		1 OF 1	