
SPARE PARTS LIST

**Lavavajillas
Lavevaisselle
Dishwasher
Geschirrspüler
Lavastoviglie**

Models:

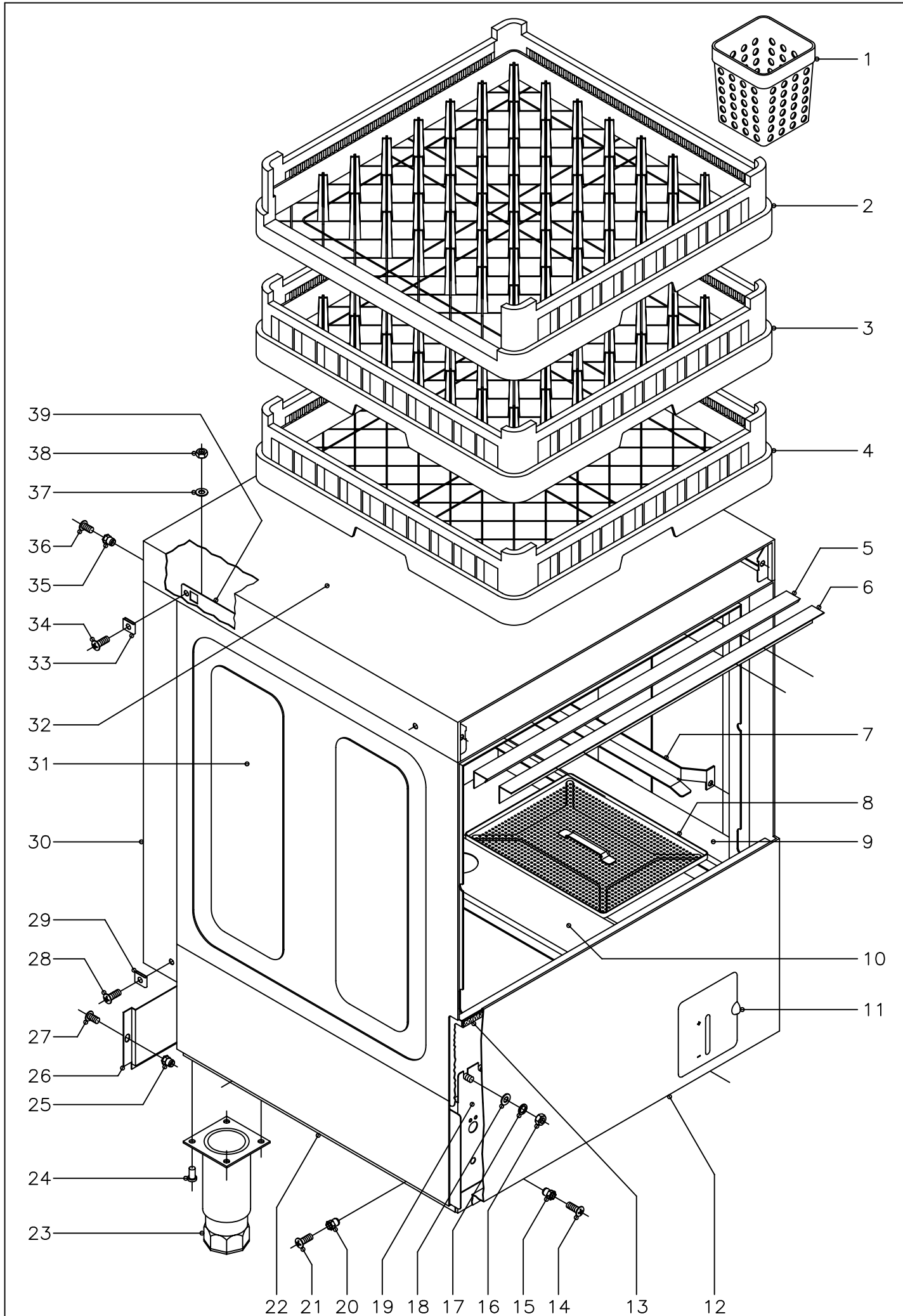
FI-72W

Junio 2003 June



Fagor Industrial

REVISION	REVISION DATE	MADE BY	DRAWING N°	DETAILS
A	09/01/2004		C-1395	Flat thermometer (Z228405) replaced by round thermometer (Z273060)
			C-1395	Removable panel (Z212914) replaced by Z202914 to fit round gauges
			C-1395	Booster heater (Z241701) replaced by Z241703 with a bigger probe housing for the round gauge
B	10/10/2004		C-1395	Tank thermostat (Z718405) adjusted at 150°F (blue & red) replaced by thermostat (Z718441) adjusted at 160°F (yellow & red)
C	12/01/2004		C-1390	Front bottom panel (Z262911) with door is replaced by panel w/o door (Z268313)
D	02/15/2006		C-1396	Bracket for detergent pump (Z208905) replaced by Z208434, so pump can be installed reverse
E	04/01/2006		N/A	Wiring has been modified in order to eliminate one relay.
			C-1395	One Booster heater relay (Z213007) eliminated. Hot water assurance relay (Z683087) used for the booster heater too.
			N/A	Diagram Z268403 replaced by Z263005. Schematic Z243045 replaced by Z263006.
F	9/15/2006		C-1395	Tank Thermostat (Z718441) replaced by Thermostat Z203014 + Cap (P443060)
			N/A	Another thermostat (Z203014) incorporated for Hot water assurance feature + Plate (Z718446)
G	1/12/2006		C-1396	Anti return valve (Z231105) replace by Z231106
H	2/1/2007		C-1395	Label Z268401 replaced by Z268901
			C-1395	Knob (R663062) replaced by Z203069
			C-1395	Start Button (Z213033) replaced by Z203080
			C-1395	Removable panel (Z202914) replaced by Z208908
			C-1391	Door Handle (Z200512) replaced by Z200551
			C-1391	Outlet Door (Z260531) replaced by Z268005



N plano
C-1390

Firma
[Signature]

Fecha
6-2003

Aparato MUEBLE
LAVAVAJILLAS FI-72

Lamina
1

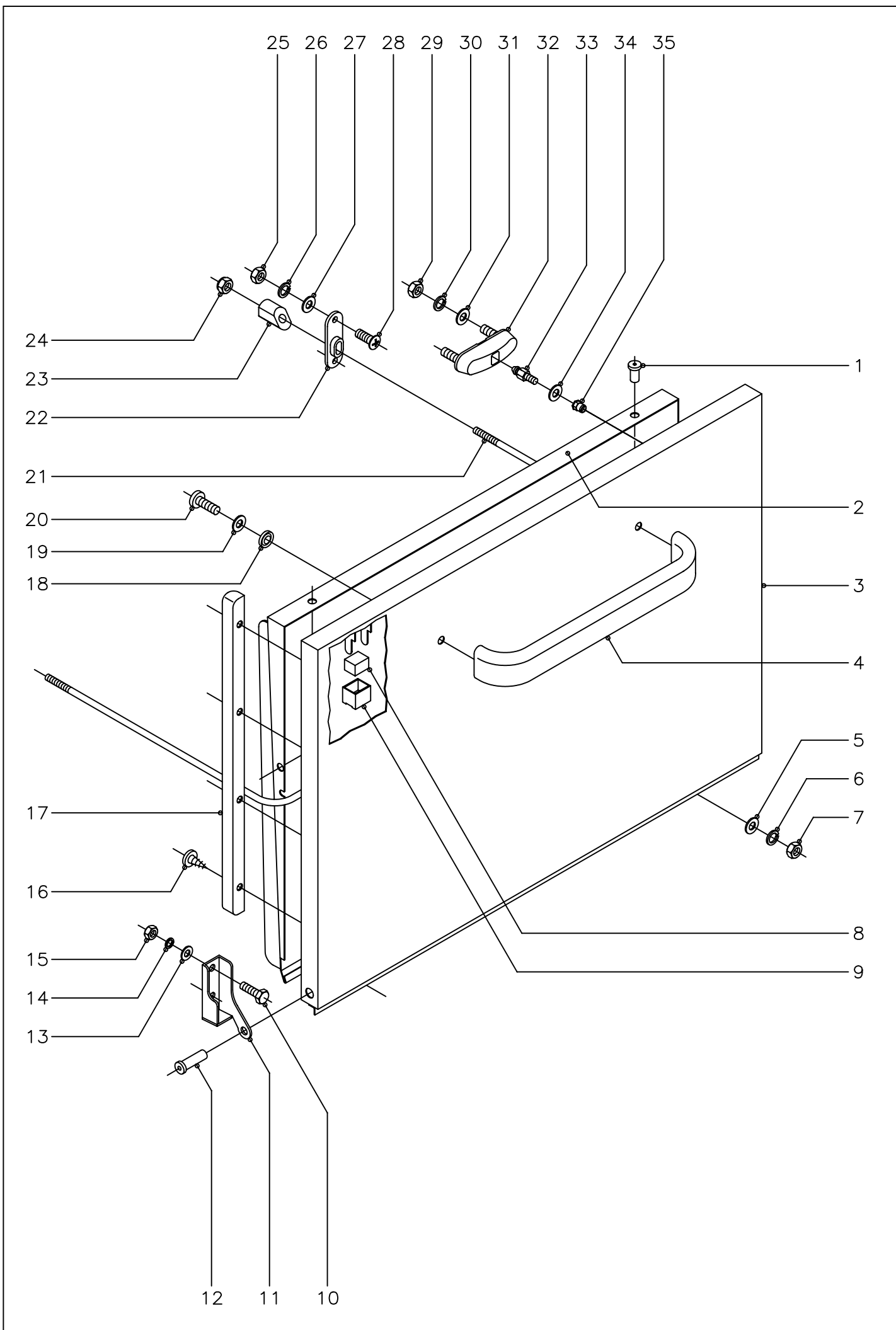
Fagor Industrial S.Coop. **FAGOR**
Onate

MOD. ALL PURPOSE DISHWASHER

BODY AND RACKS

C-1390

ITEM	PART N.	DESCRIPTION	NEW PART N.	FI-72W									NOTES
1	Z655314	Cutlery Container		4									
2	Z685302	CB-7 Tray Rack		1									
3	Z655302	CP-16/18 Peg rack		1									
4	Z655301	CT-10 All purpose rack		1									
5	Z200315	Frame		1									
6	Z200309	Fastening Plate		1									
7	Z200305	Right basket Guide		1									
s/n	Z200306	Left basket guide		1									
8	Z210801	Filter Tray		4									
9	Z210805	Right support for trays		1									
s/n	Z210806	Left support for trays		1									
10	Z210804	Central support for trays		1									
	Q232040	Washer A.6		8									
	Q162040	Nut M.6		8									
11	Z212902	Door for Tank		1									
s/n	Z212906	Door axle		1									
s/n	Q352001	Pin 2x15		2									
12	Z262911	Front Panel	Z268313	1									
13	Z200313	Spongy profile		1									
14	Q152004	Bolt M-5x13		2									
15	Q221342	Rivet M-5		2									
16	Q162040	Nut M-6		8									
17	Q262040	Washer A-6		8									
18	Q232040	Washer A-6		8									
19	Z260101	Complete frame		1									
20	Q221342	Rivet M-5		4									
21	Q152004	Bolt M-5x13		4									
22	Z262903	Side left panel		1									
s/n	Z262902	Side right panel		1									



N plano C-1391	Firma 	Fecha 6-2003	Aparato PUERTA LAVAVAJILLAS FI-72	Lamina 2	Fagor Industrial S.Coop. FAGOR  Oñate
-------------------	--	-----------------	---	-------------	--

MOD													
ALL PURPOSE DISHWAHER				DOOR						C-1391			
ITEM	PART N.	DESCRIPTION	NEW PART	FI-72W									NOTES
1	Q412000	Rivet Ø4x8		4									
2	Z260533	Inner panel for door		1									
3	Z260531	External panel for door	Z268005	1									
4	Z200512	Door handle	Z200551	1									
5	Q232030	WasherA-5		2									
6	Q262030	Washer A-5		2									
7	Q162030	Nut M-5		2									
8	Z200506	Magnet		1									
9	Z200507	Magnet protection		1									
10	Q012042	Bolt M-6x15		4									
11	Z400514	Left hinge		1									
s/n	Z400515	Right hinge		1									
12	Z400516	Axle door		2									
13	Q232040	WasherA-6		4									
14	Q262040	WasherA-6		4									
15	Q162040	Nut M-6		4									
16	Q082005	Bolt 4,2x13		8									
17	Z260508	Frame of door		2									
18	Q308002	Washer A-6		2									
19	Q232040	Washer A-6		2									
20	Q032041	Bolt M-6x10		2									
21	Z260506	Rod		1									
22	Z200310	Support		2									
23	Z200522	Tightener		2									
24	Q222012	Nut M-6		2									
25	Q162030	Nut M-5		4									
26	Q262030	Washer A-5		4									
27	Q232030	WasherA-5		4									
28	Q152004	Bolt M-5x13		4									

MOD.

ALL PURPOSE DISHWASHER

WASHING SYSTEM

C-1392

ITEM	PART N.	DESCRIPTION	NEW PART N.	FI-72W									NOTES
1	Z200906	Tank		1									
2	Q881324	Worm clamp 50 - 70		1									
3	Z200904	Suction elbow		1									
4	Q881307	Worm clamp 40 - 60		1									
	Z201011	Washing pump (230 V., 50 Hz.)		(1)									
5	Z203511	WASHING PUMP (230 V., 60 Hz.)		1									(MBL)
	Z201081	Joint retainer		1									
	Z201082	Turbine 50 Hz. (Ø 88 mm.)		1									
	Z203571	Turbine 60 Hz. (Ø 77 mm.)		1									
6	Q881307	Worm clamp 40 - 60		1									
7	Z200905	Impulsion elbow		1									
8	Z261001	Pump support		1									
9	Z201003	Pump base		1									
10	Q162050	Nut M-8		1									
11	Q242050	Washer A-8		1									
12	Q307048	Joint Ø16,18xØ9,12xØ3,53		1									
13	V321300	Capacitor 10mF.		1									(C)
14	Q232030	Washer A-5		2									
15	Q012033	Bolt M-5x20		2									
16	Q012041	Bolt M-6x10		2									
17	Q262040	Washer A-6		2									
18	Q232040	Washer A-6		2									
19	Q881324	Worm clamp 50 - 70		1									
20	Z200703	Support		1									
21	Q881305	Worm clamp 25 - 40		1									
22	Z260701	Washing conduit		1									
23	Z200701	Support		1									
24	Z200704	Axle		2									
25	Z650711	Fastening washer		2									

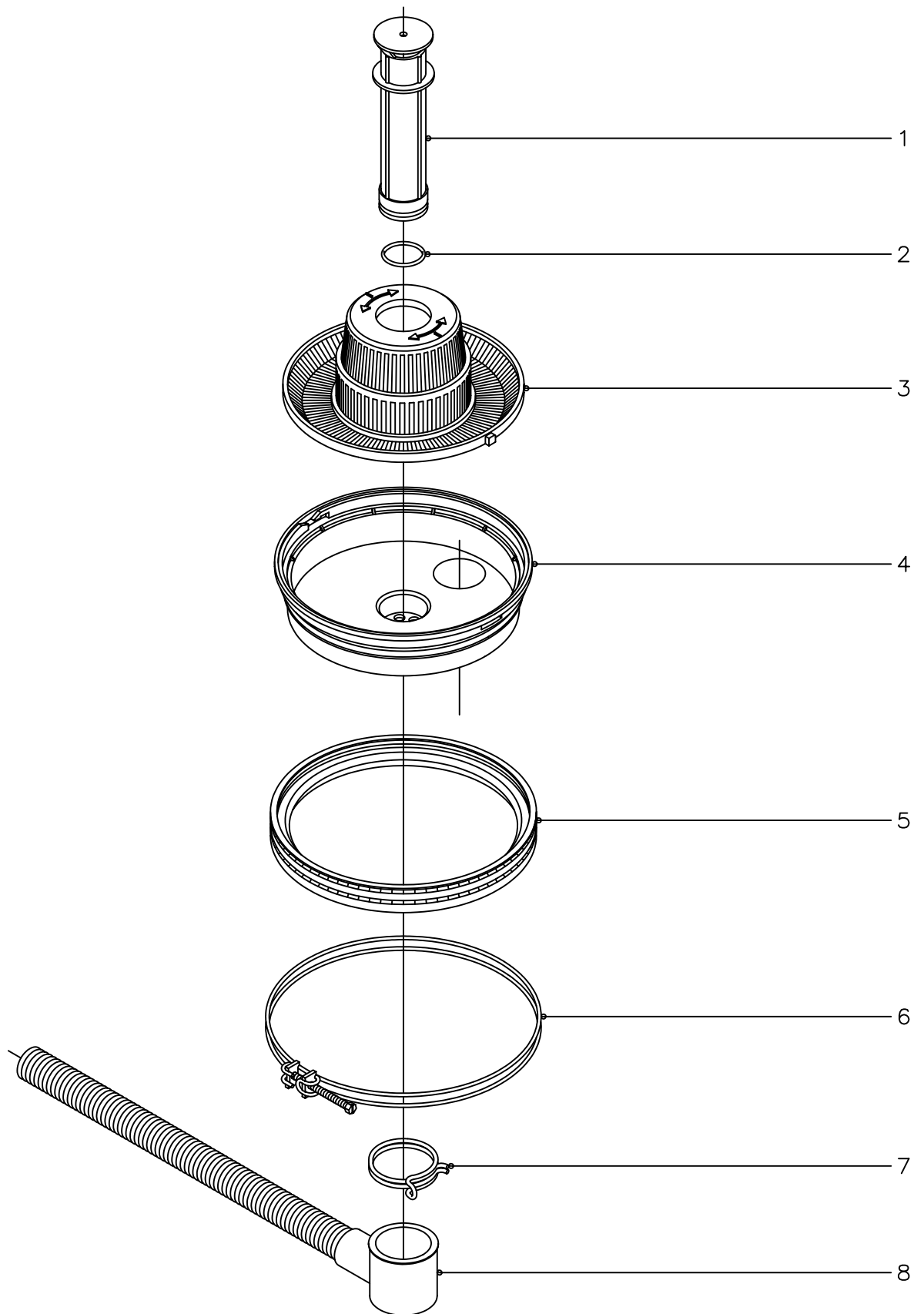
MOD.

ALL PURPOSE DISHWASHER

WASHING SYSTEM

C-1392

ITEM	PART N.	D ESCRIPTION	NEW PART	FI-72W										NOTES
26	Q152024	Bolt M-4x8		4										
27	Z201902	Left rinsing branch		2										
28	Q881305	Worm clamp25 - 40		1										
29	Z200707	Upper distributor support		1										
30	Q162040	Nut M-6		4										
31	Q262040	Washer A-6		4										
32	Q232040	Washer A-6		4										
33	Q307052	Joint Ø60,83xØ50,17xØ5,33		1										
34	Q152016	Bolt M-5x0,8		2										
35	Z201903	Support		2										
36	Z201901	Right rinsing branch		2										
37	Z211903	Rinsing nozzle		12										
38	Z200705	Nut M-14x1		2										
39	Z650704	Distributor connection		2										
40	Z650716	Compleat distributor		2										
41	Q242010	Washer A-3		4										
42	Q152015	Bolt M-3x6		4										
43	Q012046	Bolt M-6x40		4										
44	Q306050	Washer Ø11xØ6,2x1,5		4										
45	Q307050	Joint Ø19,18xØ13,94xØ2,62		1										
46	Q307052	Joint Ø60,83xØ50,17xØ5,33		1										
47	Q307049	Joint Ø95,75xØ85,09xØ5,33		1										
48	Q307052	Joint Ø60,83xØ50,17xØ5,33		1										
49	Q232040	Washer A-6		4										
50	Q262040	Washer A-6		4										
51	Q162040	Nut M-6		4										



N plano
C-1393

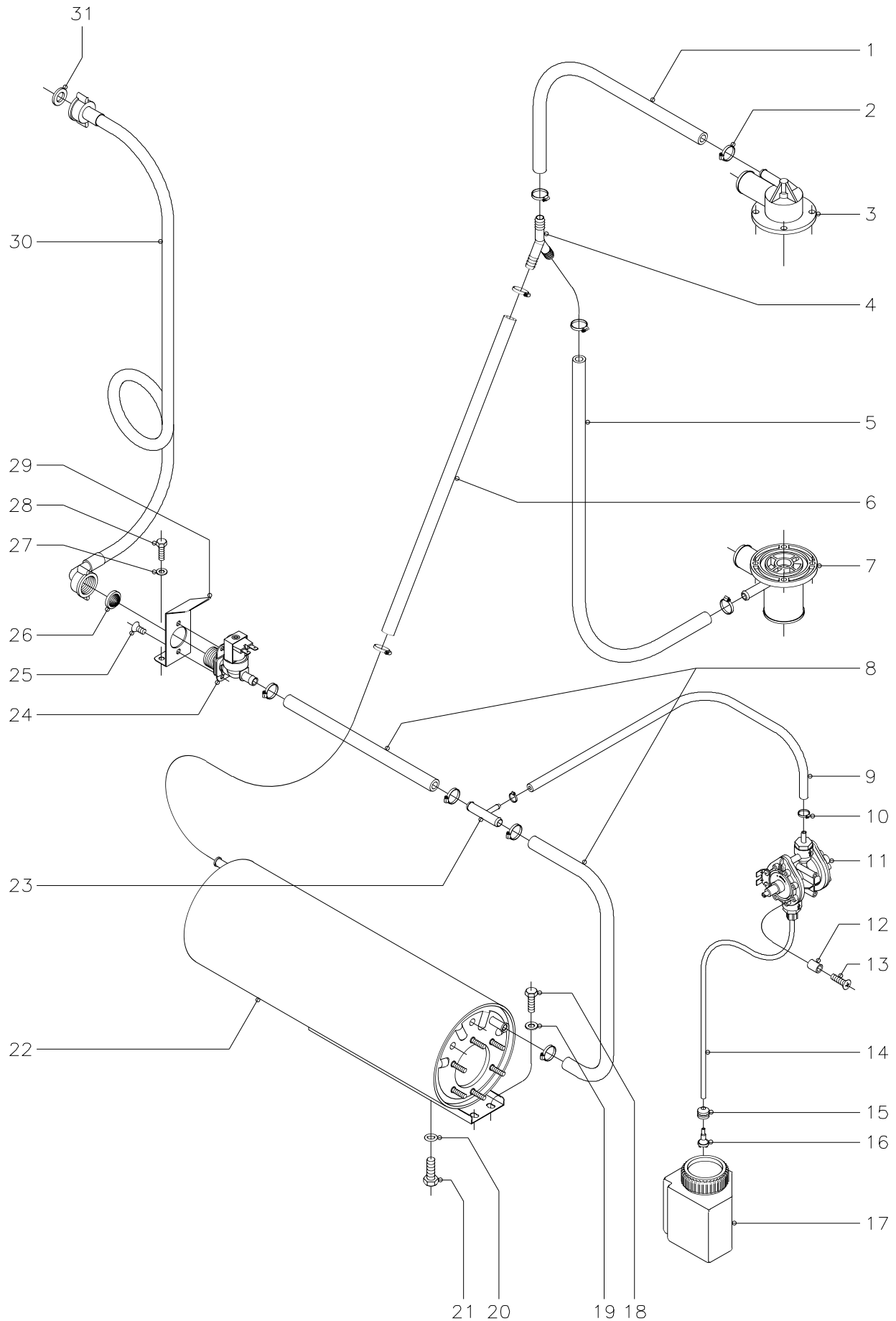
Firma
[Signature]

Fecha
6-2003

Aparato
PARTE FUNCIONAL DESAGUE
LAVAVAJILLAS FI-72

Lamina
4

Fagor Industrial S.Coop. **FAGOR** 
Oriate



N plano
C-924

Firma
[Signature]

Fecha
12-00

Aparato
LAVAVAJILLAS FI-72

Lamina
5

Fagor Industrial S.Coop. **FAGOR**
Ocate

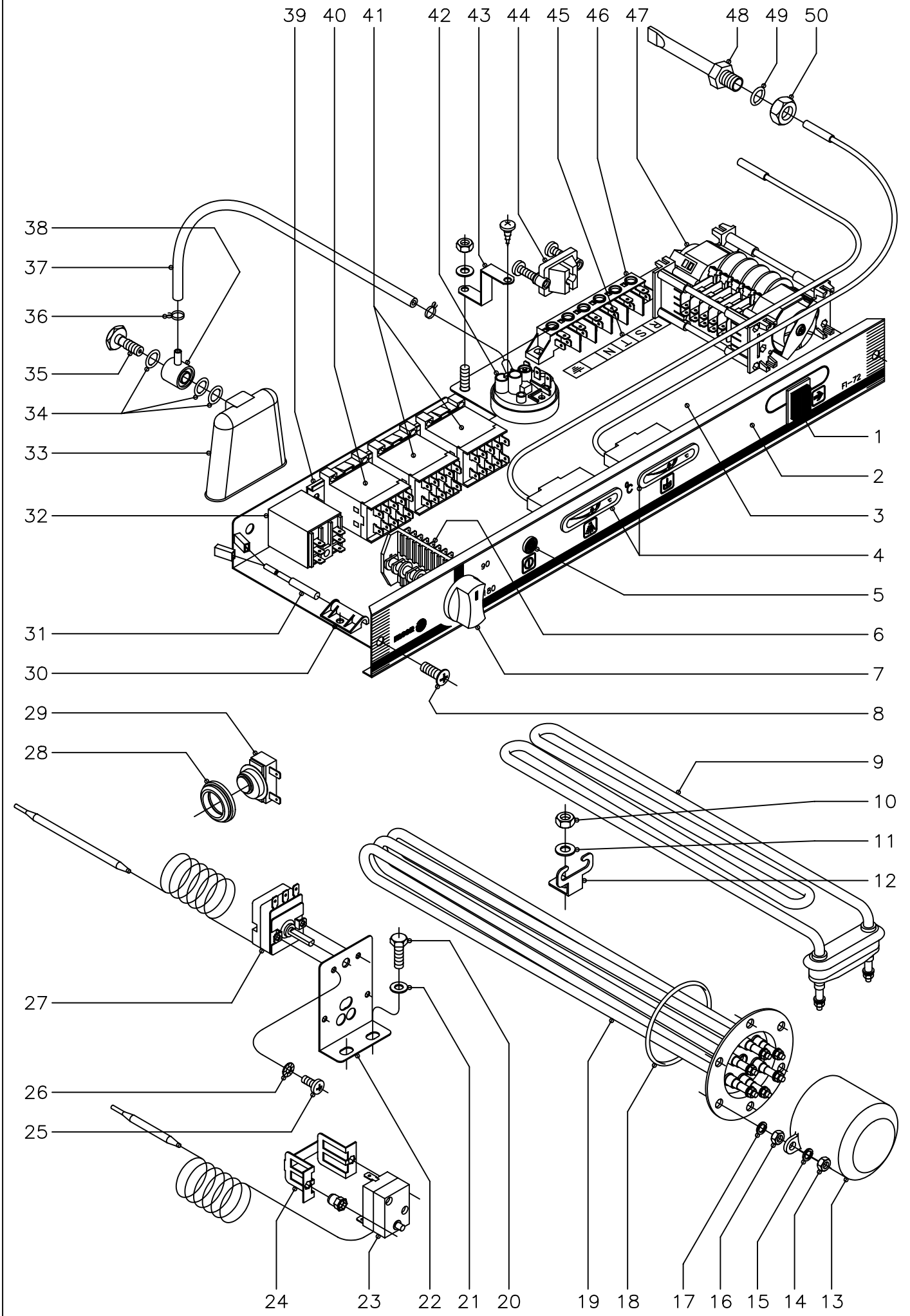
MOD.



ALL PURPOSE DISHWASHER

RINSING SYSTEM

C-924

ITEM	PART N.	DESCRIPTION	NEW PART N.	FI-72W										NOTES
1	3676900	Rubber tube Ø17xØ10x460		1										
2	Q881302	Worm clamp 12 - 20		10										
3	Z200707	Upper distributor support		1										
4	Z201106	Union "Y"		1										
5	3676900	Rubber tube Ø17xØ10x780		1										
6	3676900	Rubber tube Ø17xØ10x680		1										
7	Z200703	Cross part		1										
8	3676900	Rubber tube Ø17xØ10x200		2										
9	3704000	Rubber tube Ø10,5xØ5x620		1										
10	Q881308	Worm clamp8 - 14		2										
11	Z651123	Rinsing Aid Dispenser		1										
12	Z203007	Collar		2										
13	Q041324	Bolt M-4x25		2										
14	3699200	Capil. actv. duct Ø6xØ4x650		1										
15	N023064	Wires protection Ø6xØ13		1										
16	Z601153	Filter		1										
17	Z211101	Tank of capillary activator		1										
18	Q012031	Bolt M-5x10		2										
19	Q232030	Washer A-5		2										
20	Q307048	Joint Ø16,18xØ9,12xØ3,53		1										
21	Q012063	Bolt M-10x20		1										
22	Z201710	Boiler body		1										
23	Z601157	Pressure tap		1										
24	Z701135	Electric valve for water entry		1										(V)
25	Q152024	Bolt M-4x8		2										
26	Z701132	Filter		1										
27	Q232030	Washer A-5		2										
28	Q012031	Bolt M-5x10		2										
29	Z201101	Electric valve fastening frame		1										



N plano C-1395	Firma 	Fecha 6-2003	Aparato PARTE FUNCIONAL ELECTRICA LAVAVAJILLAS FI-72	Lamina 6	Fagor Industrial S.Coop. FAGOR  Onate
-------------------	--	-----------------	--	-------------	--

MOD.													
ALL PURPOSE DISHWASHER				ELECTRICAL SYSTEM						C-1395			
ITEM	PART N.	DESCRIPTION	NEW PART N.	FI-72W									NOTES
1	Z213033	Start switch	Z203080	1									(St / L2)
2	Z268401	Label	Z268901	1									
3	Z212914	Front	Z202914 / Z208908	1									
4	Z228405	Temperature Gauge	Z273060	2									
5	R693056	Lamp ambar		1									(L1)
6	Z213003	Selector switch		1									(IG)
7	R663062	Knob	Z203069	1									
8	Q152004	Bolt M-5x13		2									
9	Z203601	Tank heating element 2800 W. 230V.		1									(Rt)
10	Q162040	Nut M-6		1									
11	Q232040	Washer A-6		1									
12	Z603602	Bracket Tank heater		1									
13	Z651731	Cap Tank heater		1									
14	Q163140	Nut M-6		2									
15	Q262040	Washer A-6		2									
16	Q163140	Nut M-6		6									
17	Q262040	Washer A-6		6									
18	Q307035	O-ring seal AN-36		1									
19	Z241701	Boiler heating element 6000 W.	Z241703	1									(Rc)
20	Q012031	Bolt M-5x10		2									
21	Q232030	Washer A-5		2									
22	Z203047	Thermostat support		1									
23	Z213014	High limit thermostat Tecasa		1									(TSC)
24	Z203060	Safety fastening Tecasa		1									
	Q221341	Remache exagonal M-4		2									
25	Q153111	Bolt M-4x8		4									
26	Q242020	Washer A-4		4									
27	Z203014	Boiler thermostat		1									(TC)
28	N503017	Thermostat support		1									

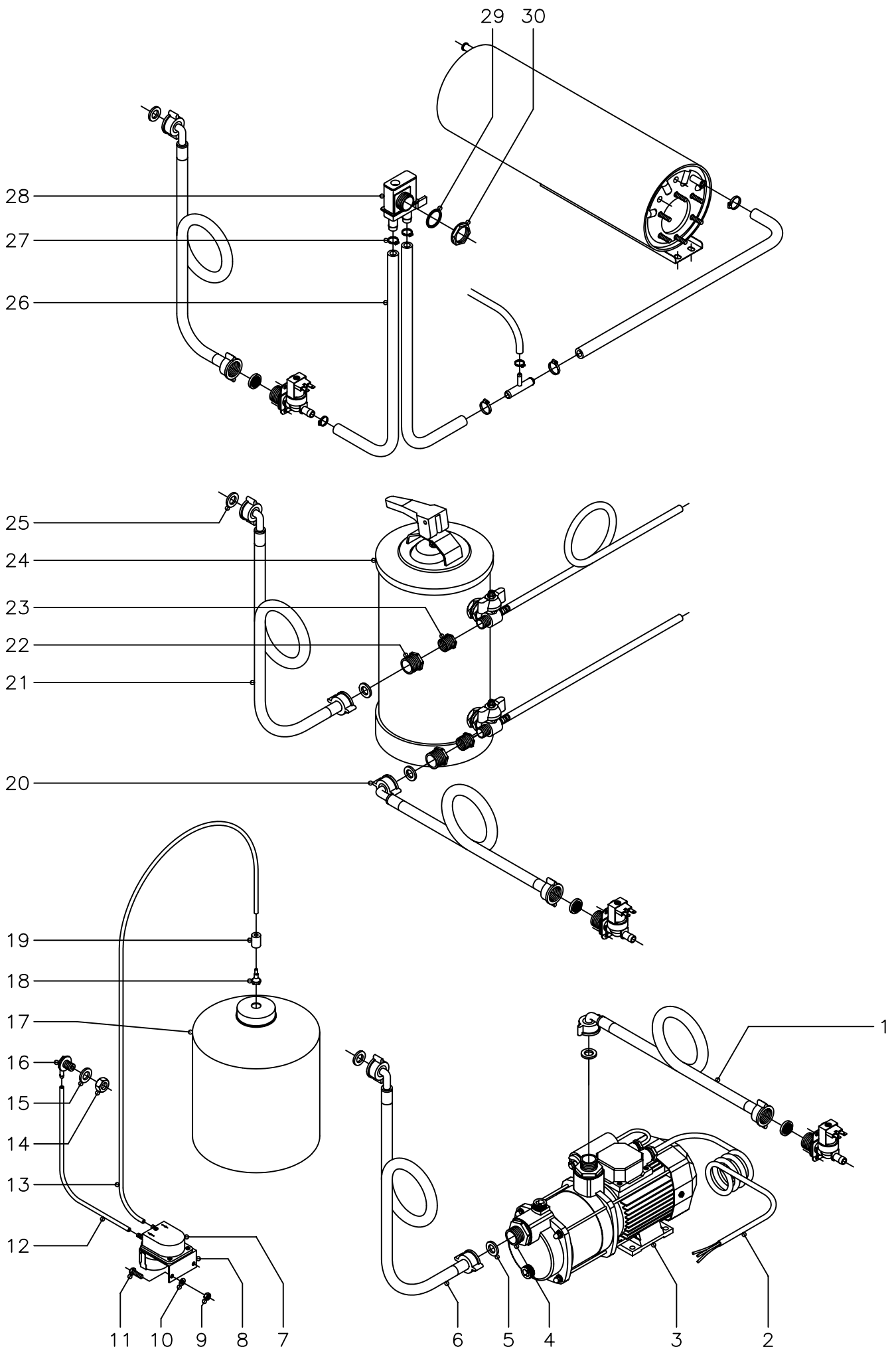
MOD.

ALL PURPOSE DISHWASHER

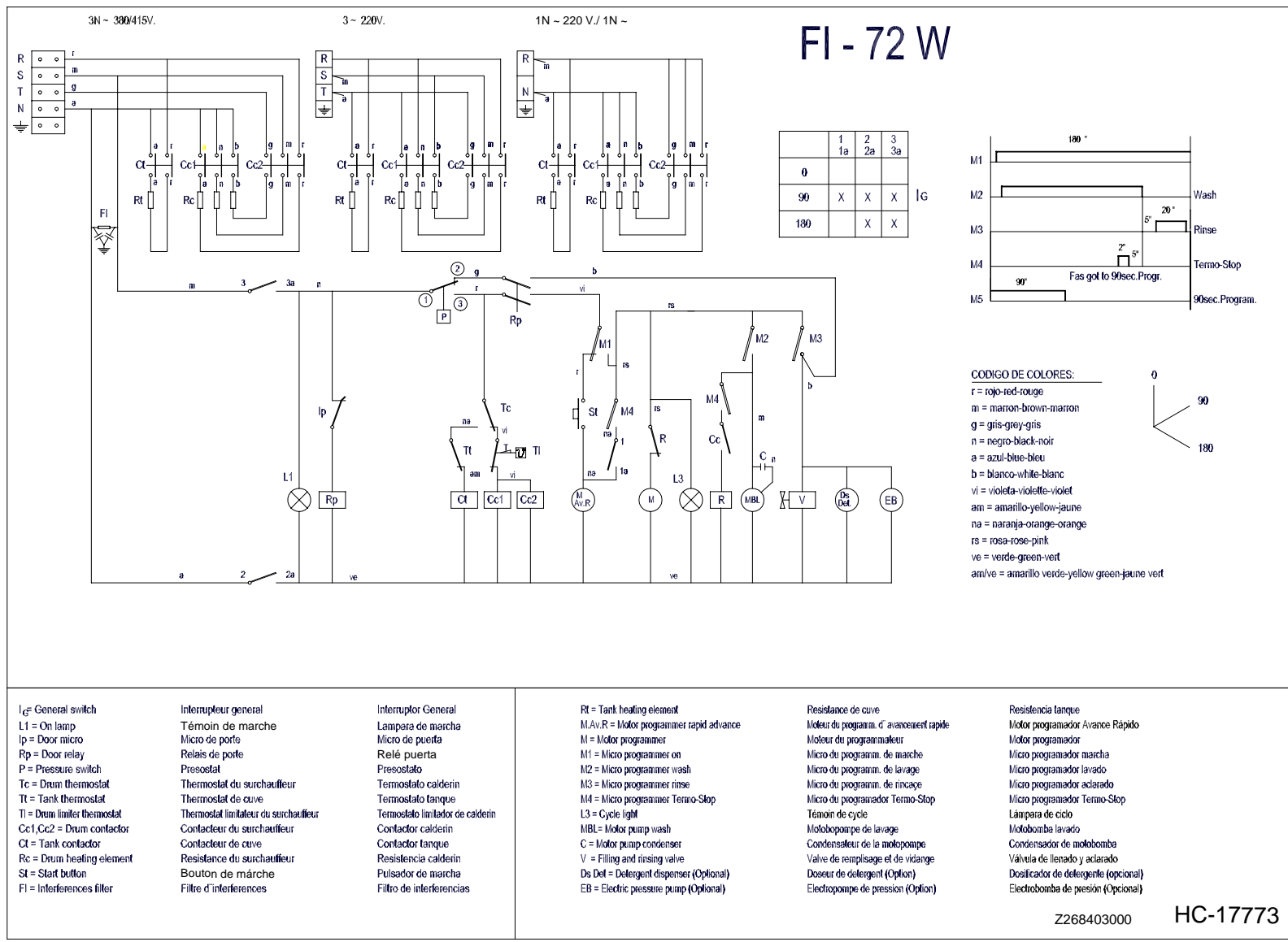
ELECTRICAL SYSTEM

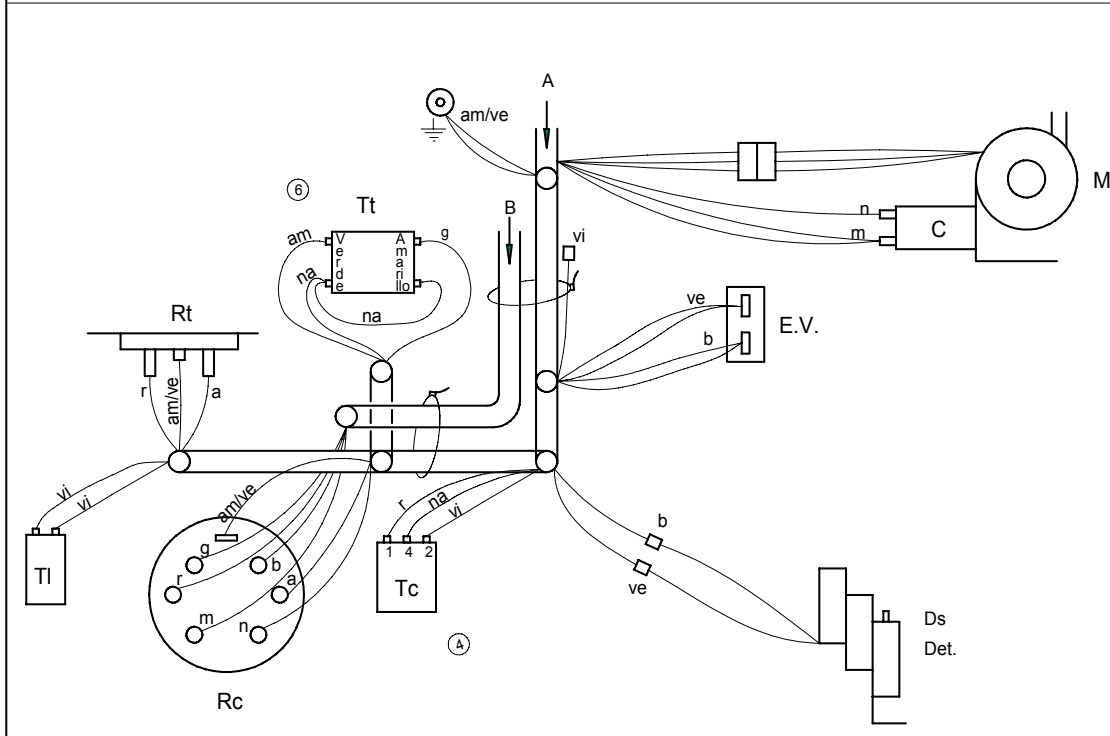
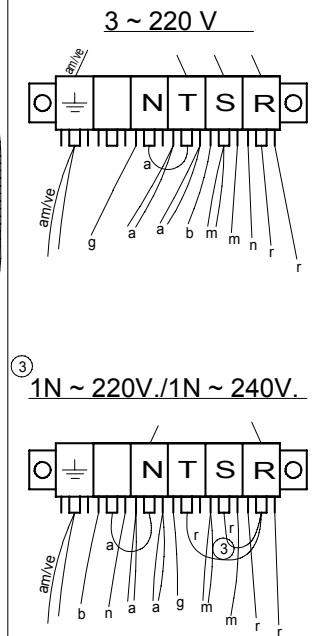
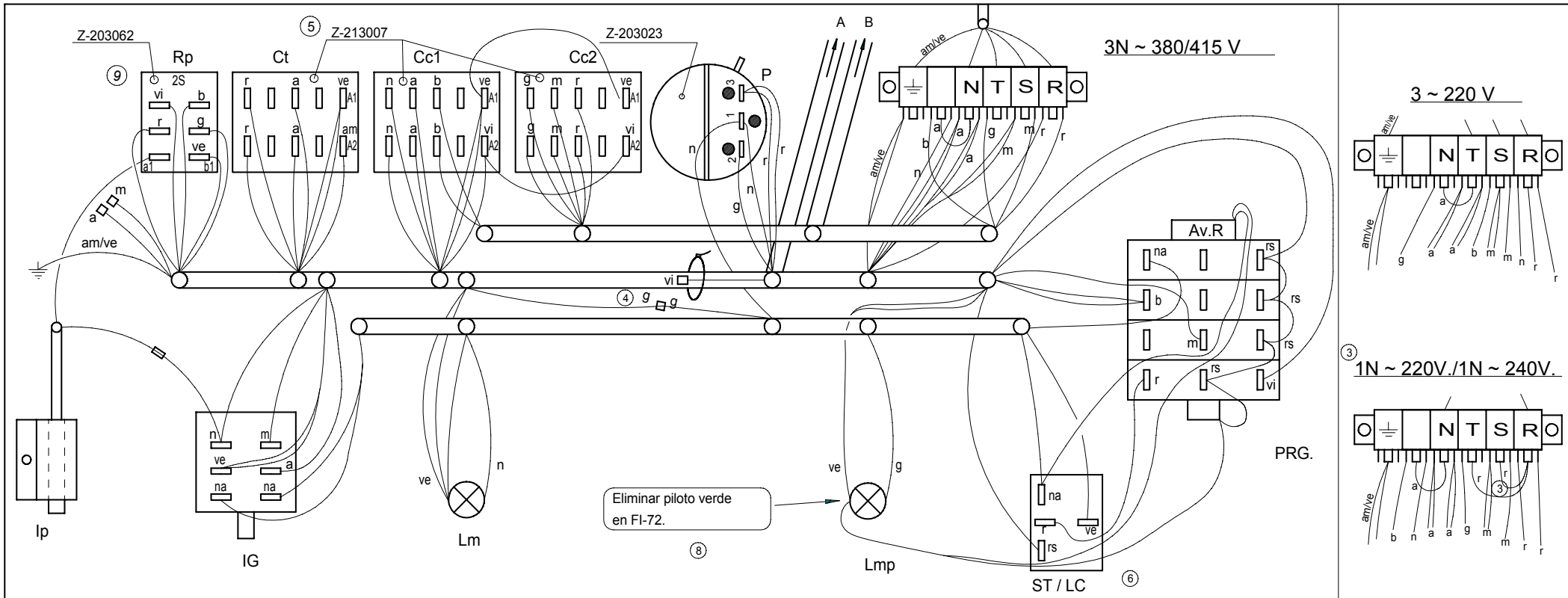
C-1395

ITEM	PART N.	DESCRIPTION	NEW PART N.	FI-72W									NOTES
29	Z718405	Tank thermostat	Z718441/Z203014+P443060	1									(Tt)
30	Z203010	Fastening for magnet switch		1									
31	Z203009	Magnet switch		1									(Ip)
32	Z203062	Relay 230 V., 50/60 Hz.		1									(Cp)
33	Z203011	Pressure switch hood		1									
34	Q307003	Joint Ø16,01xØ10,77xØ2,62		3									
35	Z203013	Pressostat bolt		1									
36	P102154	Elastic flange for tubes		2									
37	3702400	Rubber tube Ø8xØ4x1300		1									
38	Z203012	Level switch union		1									
39	Z103084	Switches guide L=138		1									
40	Z213007	Tank Heater relay 230 V., 50/60 Hz.		1									(Ct)
41	Z213007	Boiler heater contactor 230/50-60 Hz.	Z683087 + Z213007	2									(CC1 / CC2)
42	Z203023	Pressure switch		1									(P1)
43	Z602923	Level switch support		1									
44	R023013	Wires clip		1									
45	Z213005	Label RSTN		1									
46	R253044	Terminal block		1									
47	Z258412	Timer		1									(M)
48	Z263002	temperature gauge probe housing		1									
49	Q306024	Washer Ø18xØ12,5x1,5		1									
50	Q162070	Nut M-12		1									



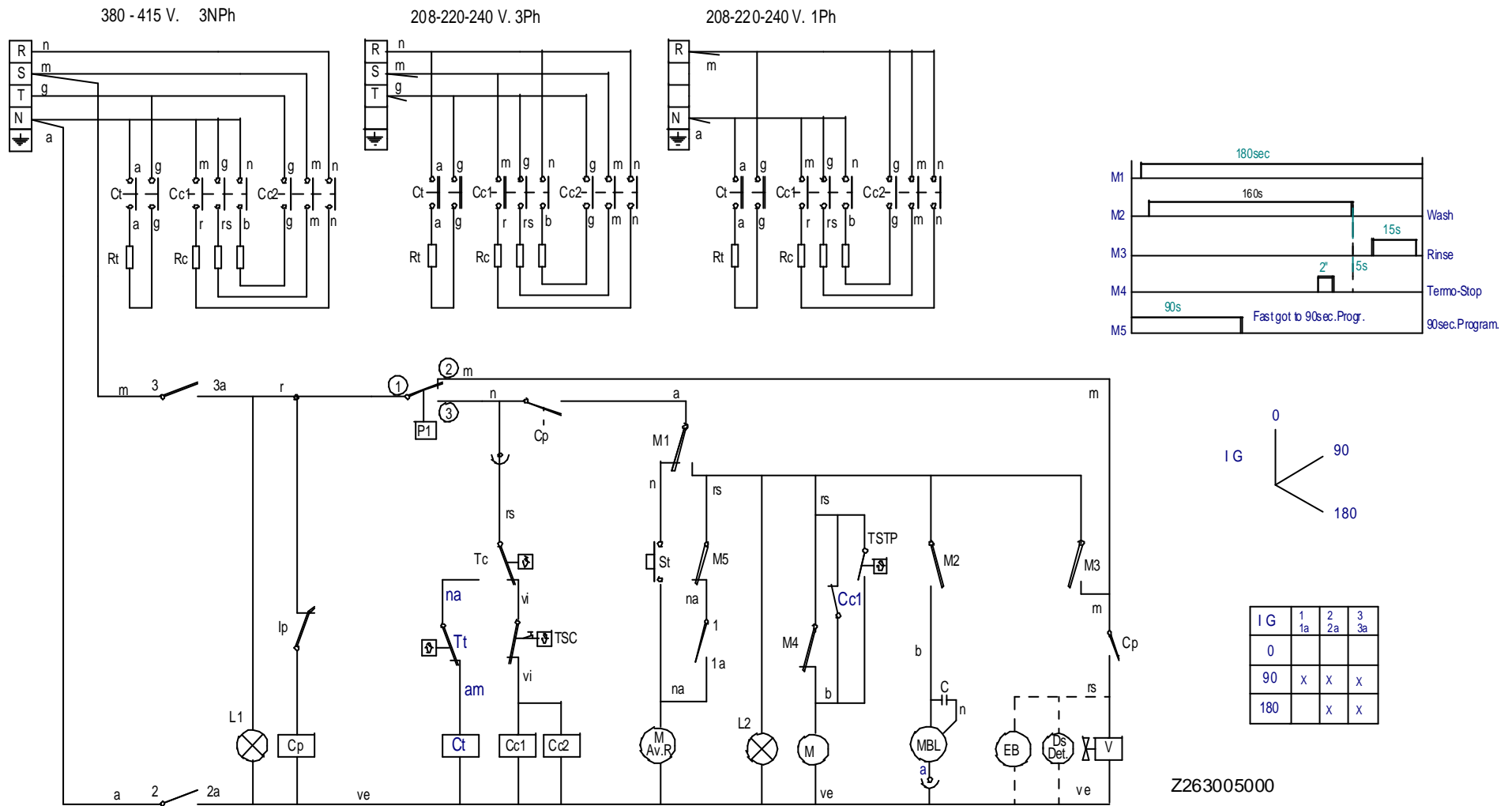
MOD.		ALL PURPOSE DISHWASHER			OTHER PARTS								C-1396	
ITEM	PART N.	DESCRIPTION	NEWPART	FI-72W									NOTES	
		1210305187 KIT PRESSURE PUMP												
1	-	Hose		-										
2	Z209510	Pump wires		1										
3	Z209508	Pressure pump (230 V., 50 Hz.)		1										
3	Z209508	Pressure pump (230 V., 60 Hz.)		1										
4	Z209509	Coupling		2										
5	Q307031	Gask		2										
6	Z602121	Inlet hose		1										
		1210305132 DETERGENT PUMP												
7	Z208903	Doser for detergent		1									(Ds. Det.)	
	Q082005	Bolt 4,2x13		2										
8	Z208905	Detergent doser bracket	Z208434	1										
9	Q162030	Nut M-5		2										
10	Q232030	Washer A-5		2										
11	Q012031	Bolt M-5x10		2										
12	3699200	Conduit Ø6xØ4x500		1										
13	3699200	Conduit Ø6xØ4x2000		1										
14	Q162070	Nut M-12		1										
15	Q307031	Washer Ø24xØ14x3		1										
16	Z230902	Protection for detergent conduit		1										
17	-	Detergent can		-										
18	Z601153	Aspiration filter		1										
19	Z701152	Filter weight		1										





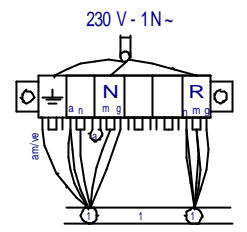
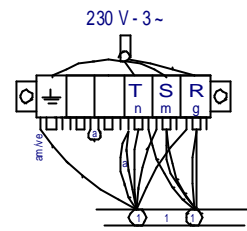
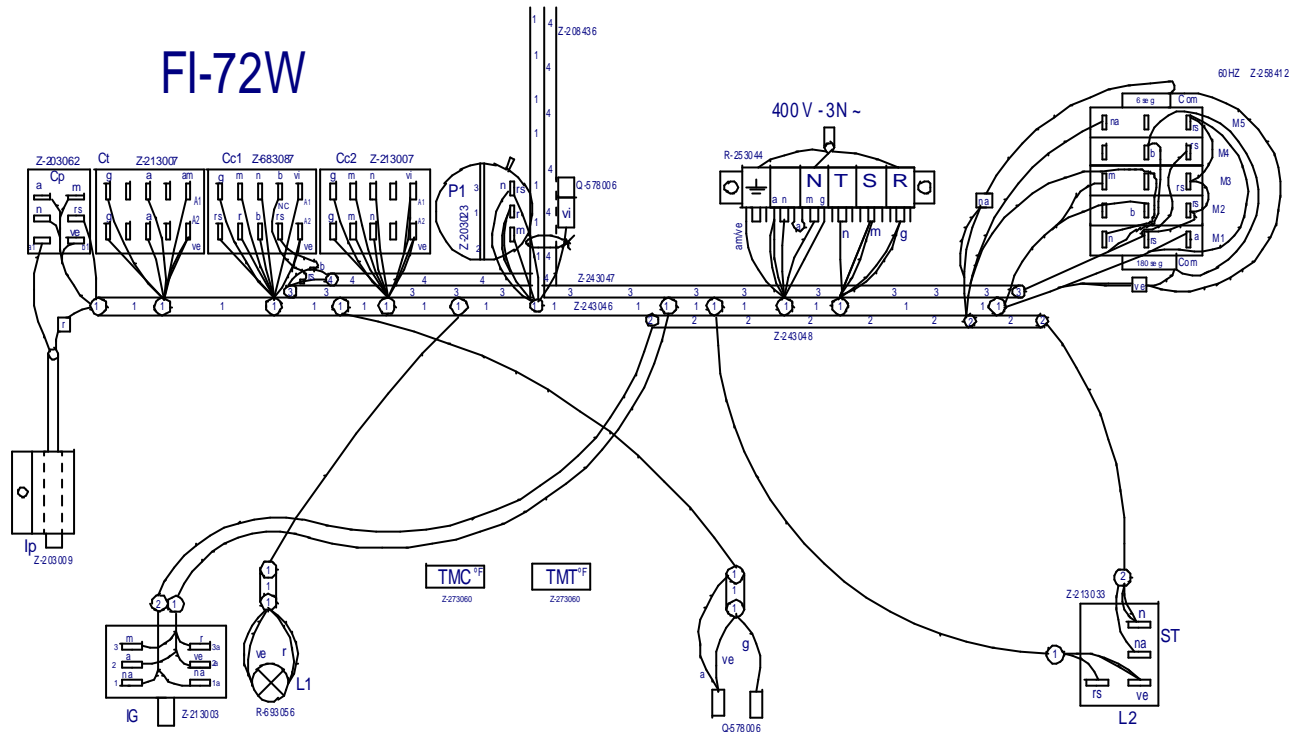
Esquema de montaje FI-64; FI-72		Z-243045			
Nº	Pieza	Nº	Clasificación	Acabado	
Nº	Modificación	Propuesta de	Fecha	Tolerancias generales	
④	Cambiar de color Marrón a Gris	Maillo	28-9-95	<5±	50- 100± :
⑤	Sustituir 1 rele Z-203018 por Z-213007	Albes	30-11-95	5-25± :	> 100±
⑥	Sustituir Termostato tanque y ST/LC	Maillo	19-5-97	25- 50± :	∞±
⑦	Introducir N° Clasificación	Palacio	10-7-97		
⑧	Introducir Nota eliminación piloto verde	Palacio	02-01-01		
⑨	Sustituir Z-203018 por Z-203062, cambiar colores en Rp	J.M.P.A.	02-05-13		
Dibujado		Firma	Fecha	Mecanizado superficial	
Proyectado		S. N.	6-7-93	FAGOR	
Comprobado		Fagor Industrial, Koop, Elk, Mugatua		Plano numero	
Escala		LAVAVAJILLAS		HC-16217-9	
Plano hau ez daiteke erabili ez bezitza gure baimenitz gabe				Sustituye al N°	
				Sustituido por	

FI-72W



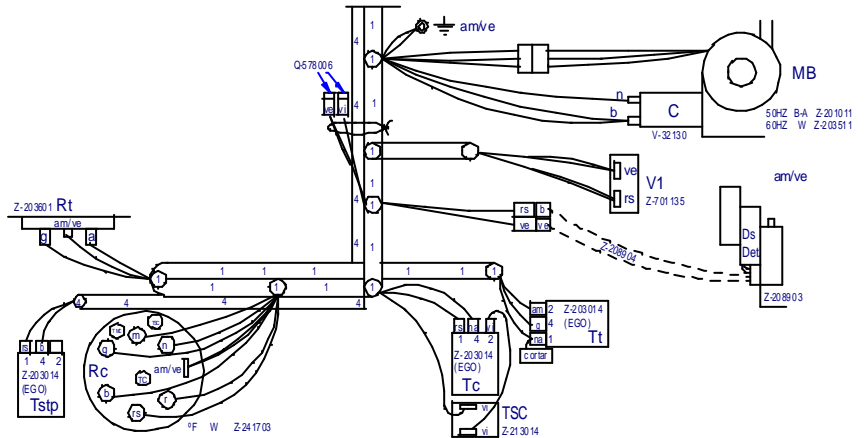
Z263005000 HC-17892-1

FI-72W



ESQUEMA TEORICO Z-263005
 LEYENDA Z-243051
 INDICADOR DE COMPONENTES Z-713034

Z263006000



Z263006000 HC-17897-1

