

# Parts list



## Flexeserve Zone® 5 Tier - Pret A Manger North America



### NOTE

Parts must only be fitted by fully trained, qualified and skilled engineers. Parts indicated as 'left' and 'right' are from the view of the operator when facing the front of the unit.

**For internal use only.**

**Model numbers relating to this parts list can be found at the end of the document.**

<b>AIR DEFLECTOR</b>  IBS NUMBER: 30034556	<b>BACK PANEL</b>  IBS NUMBER: 20073763	<b>BASE CARTRIDGE</b>  IBS NUMBER: 10080685	<b>BASE TICKET RAIL</b>  IBS NUMBER: 00020634
<b>CABLE GLAND WITH LOCKNUT</b>  IBS NUMBER: 30034510	<b>CASTOR (BRAKED)</b>  IBS NUMBER: 30039952	<b>CASTOR (UNBRAKED)</b>  IBS NUMBER: 30039953	<b>CONTROL BOX</b>  IBS NUMBER: 00016673

**CONTROLLER**



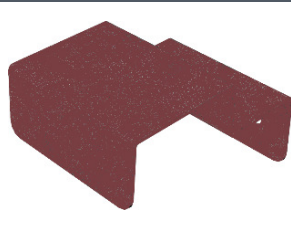
IBS NUMBER: 30053165

**DOOR BRACKET**



IBS NUMBER: 00019477

**END PANEL CATCHING BRACKET**



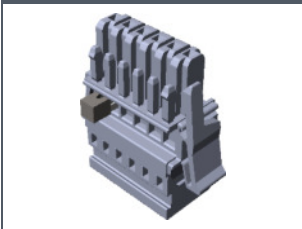
IBS NUMBER: 10081660

**FAN & ELEMENT LOOM**



IBS NUMBER: 00013752

**FAN LOOP BLANK OFF PLUG**



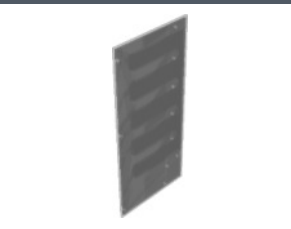
IBS NUMBER: 00017855

**GLASS END PANEL (LEFT)**



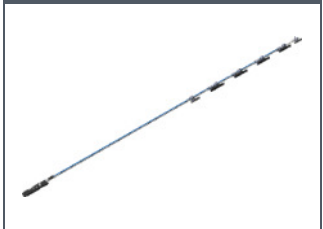
IBS NUMBER: 30044955

**GLASS END PANEL (RIGHT)**



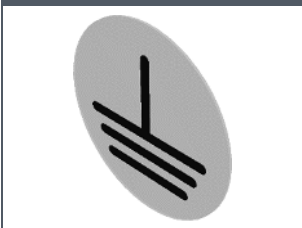
IBS NUMBER: 30044956

**GLASS HEATER & LIGHTS LOOM**



IBS NUMBER: 00013751

**GROUND SYMBOL LABEL**



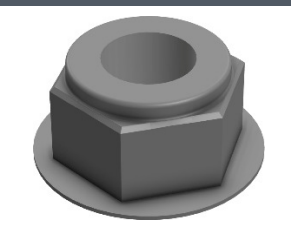
IBS NUMBER: 30030249

**HEATER FAN**



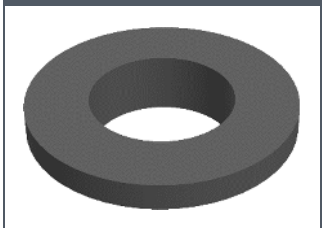
IBS NUMBER: 00022846

**INSERT NUT**



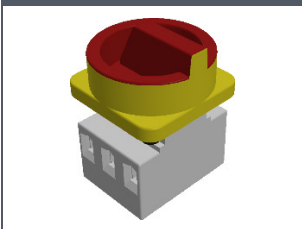
IBS NUMBER: 30047512

**INSULATION SLEEVE**



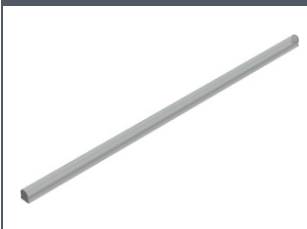
IBS NUMBER: 30028207

**ISOLATOR**



IBS NUMBER: 30040000

**LED FITTING**



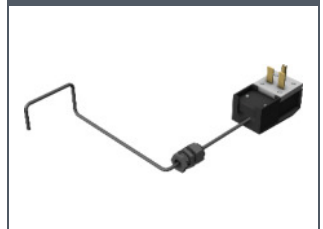
IBS NUMBER: 30033249

**LIGHT LEAD**



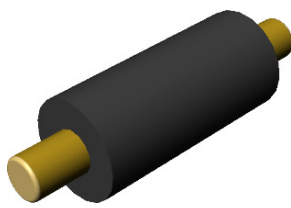
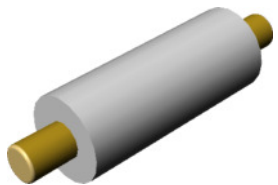

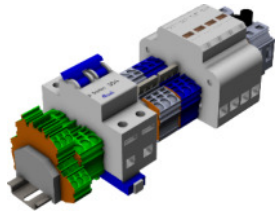
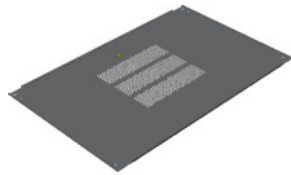


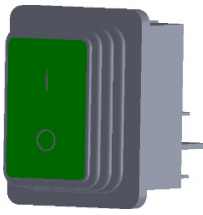
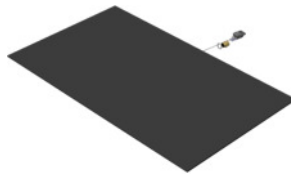

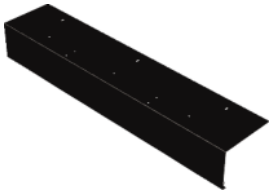
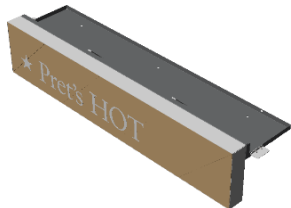




IBS NUMBER: 00013108

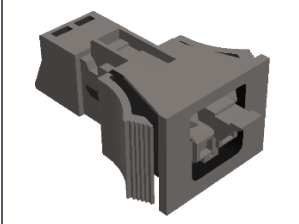
**MAINS LEAD**



IBS NUMBER: 30038237

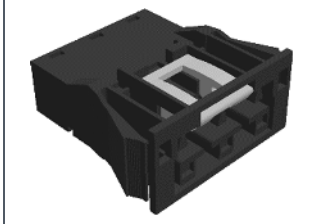
<p>PERFORATED END PANEL (LEFT)</p>  <p>IBS NUMBER: 00020612</p>	<p>PERFORATED END PANEL (RIGHT)</p>  <p>IBS NUMBER: 00020611</p>	<p>PILLAR/STANDOFF (BLACK)</p>  <p>IBS NUMBER: 30044253</p>	<p>PILLAR/STANDOFF (WHITE)</p>  <p>IBS NUMBER: 30043979</p>
<p>POZI PAN SCREW (M3 x 20)</p>  <p>IBS NUMBER: 30042493</p>	<p>RAIL</p>  <p>IBS NUMBER: 00014081</p>	<p>REAR BACK PANEL</p>  <p>IBS NUMBER: 00019228</p>	<p>RISER</p>  <p>IBS NUMBER: 30046043</p>
<p>RISK OF ELECTRIC SHOCK LABEL</p>  <p>IBS NUMBER: 30030247</p>	<p>ROCKER SWITCH</p>  <p>IBS NUMBER: 30022253</p>	<p>SHELF GLASS</p>  <p>IBS NUMBER: 00023887</p>	<p>SHELF GLASS PROBE</p>  <p>IBS NUMBER: 30040039</p>
<p>SIGNAGE CANOPY</p>  <p>IBS NUMBER: 10075908</p>	<p>SIGNAGE HEADER</p>  <p>IBS NUMBER: 00019725</p>	<p>SOCKET BUTTON SCREW (M4 x 10)</p>  <p>IBS NUMBER: 30047784</p>	<p>SOCKET BUTTON SCREW (M5 x 12)</p>  <p>IBS NUMBER: 30047510</p>

SOCKET SNAP-IN  
(2 PIN)



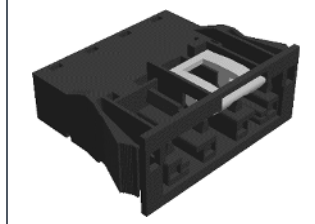
IBS NUMBER: 30039601

SOCKET SNAP-IN  
(3 PIN)



IBS NUMBER: 30039597

SOCKET SNAP-IN  
(4 PIN)



IBS NUMBER: 30039595

TICKET RAIL



IBS NUMBER: 00020635

TOP SKIN PANEL



IBS NUMBER: 10074744

TRIPLE PULL RIVET  
(3.2)



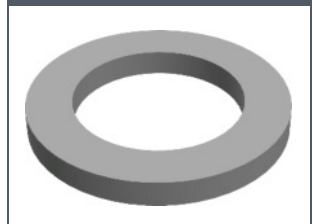
IBS NUMBER: 30025872

TRIPLE PULL RIVET  
(4.8)



IBS NUMBER: 30025873

WASHER



IBS NUMBER: 30026033

**NOTE**

If the part required is not listed, please contact [customer.support@flexeserve.com](mailto:customer.support@flexeserve.com) or call toll-free 833 955 8300.

Model numbers relating to this parts list include:

FXZNA10S5S-PR61

© 2022 The Alan Nuttall Partnership Ltd

Do not copy without written permission from The Alan Nuttall Partnership Ltd. All contents of this document remain the intellectual property of The Alan Nuttall Partnership Ltd.