

# Parts list



## Flexeserve Zone<sup>®</sup> 2, 3 Tier - Rear Feed North America



### NOTE

Parts must only be fitted by fully trained, qualified and skilled engineers. Parts fit all models, unless otherwise stated. Parts indicated as 'left' and 'right' are from the view of the operator when facing the front of the unit.

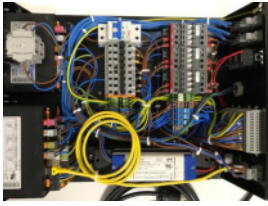
**Model numbers relating to this parts list can be found at the end of the document.**

**For internal use only.**

<p>AIR DEFLECTOR (1000)</p> <p>IBS NUMBER: 30047644</p>	<p>AIR DEFLECTOR (600)</p> <p>IBS NUMBER: 30048934</p>	<p>AIR PROBE</p> <p>IBS NUMBER: 30050248</p>	<p>CASTOR (BRAKED)</p> <p>IBS NUMBER: 30039952</p>
<p>CASTOR (UNBRAKED)</p> <p>IBS NUMBER: 30039953</p>	<p>CONTROLLER</p> <p>IBS NUMBER: 30041872</p>	<p>CONTROL PANEL (1000~2 TIER)</p> <p>IBS NUMBER: 00020454</p>	<p>CONTROL PANEL (600~2 TIER)</p> <p>IBS NUMBER: 00022616</p>

**PARTS LIST**  
**FLEXESERVE ZONE® 2, 3 TIER - REAR FEED NORTH AMERICA**

CONTROL PANEL  
 (600~3 TIER)



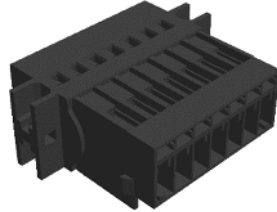
IBS NUMBER: 00023921

DESK TIDY



IBS NUMBER: 30030229

DOOR CONTACTOR



IBS NUMBER: 30029256

DOOR HANDLE



IBS NUMBER: 30050031

DOOR HINGE TUBE  
 (2 TIER~LEFT)



IBS NUMBER: 30051996

DOOR HINGE TUBE  
 (3 TIER~LEFT)



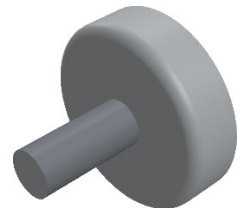
IBS NUMBER: 30051959

DOOR HINGE TUBE  
 (3 TIER~RIGHT)



IBS NUMBER: 30051949

DOOR MAGNET



IBS NUMBER: 30050594

DOOR SEAL  
 (2 TIER)



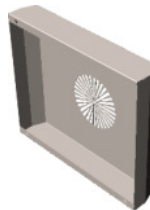
IBS NUMBER: 10080687

DOOR SEAL  
 (3 TIER)



IBS NUMBER: 10088063

FAN COVER  
 (2 TIER)



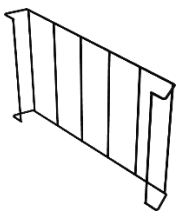
IBS NUMBER: 20107754

FAN COVER  
 (3 TIER)



IBS NUMBER: 30051582

FAN COVER GUARD



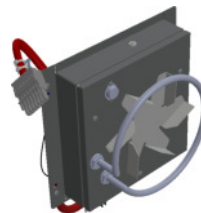
IBS NUMBER: 30052115

FOOT



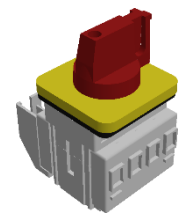
IBS NUMBER: 30050350

HEATER FAN



IBS NUMBER: 00021931

ISOLATOR



IBS NUMBER: 30028221

**PARTS LIST**  
**FLEXESERVE ZONE® 2, 3 TIER - REAR FEED NORTH AMERICA**

LIGHT LEAD



IBS NUMBER: 00022565

LED LIGHT  
(1000)



IBS NUMBER: 30050021

LED LIGHT  
(600)



IBS NUMBER: 30050019

MAINS LEAD  
(2 TIER)



IBS NUMBER: 30050619

OLED



IBS NUMBER: 30050127

OLED CARRIER COVER  
(1000)



IBS NUMBER: 10088647

OLED CARRIER COVER  
(600)



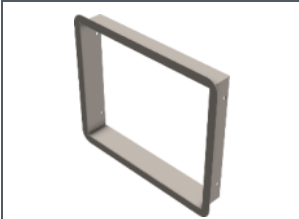
IBS NUMBER: 10087877

PANEL EXTRACT FAN



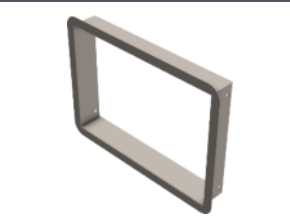
IBS NUMBER: 00022897

REAR FEED INSERT  
(2 TIER)



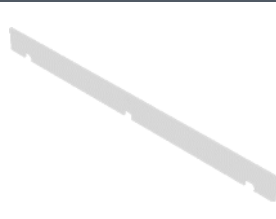
IBS NUMBER: 10086534

REAR FEED INSERT  
(3 TIER)



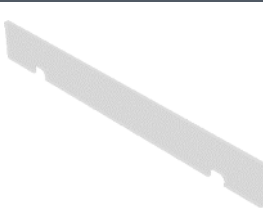
IBS NUMBER: 10088605

RISER  
(1000)



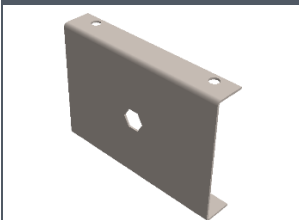
IBS NUMBER: 30047912

RISER  
(600)



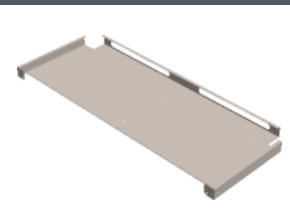
IBS NUMBER: 30049556

SHELF END



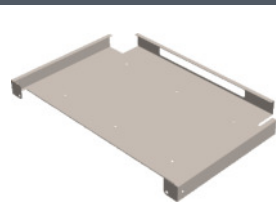
IBS NUMBER: 20105314

SHELF DUCT  
(1000)



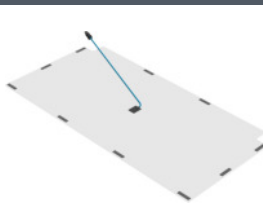
IBS NUMBER: 20099833

SHELF DUCT  
(600)



IBS NUMBER: 20104228

SHELF GLASS WITH  
PROBE (1000~2 TIER)



IBS NUMBER: 00023953

**PARTS LIST**  
**FLEXESERVE ZONE® 2, 3 TIER - REAR FEED NORTH AMERICA**

<p>SHELF GLASS WITH PROBE (600)</p> <p>IBS NUMBER: 00023950</p>	<p>SHELF GLASS PROBE</p> <p>IBS NUMBER: 30050252</p>	<p>SHELF GLASS SEAL</p> <p>IBS NUMBER: 30049365</p>	<p>SIDE GLASS PANEL (2 TIER~LEFT)</p> <p>IBS NUMBER: 30047640</p>
<p>SIDE GLASS PANEL (2 TIER~RIGHT)</p> <p>IBS NUMBER: 30047641</p>	<p>SIDE GLASS PANEL (3 TIER~LEFT)</p> <p>IBS NUMBER: 30051898</p>	<p>SIDE GLASS PANEL (3 TIER~RIGHT)</p> <p>IBS NUMBER: 30051899</p>	<p>SUPPORT PIPE CLIPS</p> <p>IBS NUMBER: 30052114</p>
<p>TICKET EDGE EXTRUSION (1000)</p> <p>IBS NUMBER: 20114676</p>	<p>TICKET EDGE EXTRUSION (600)</p> <p>IBS NUMBER: 20114714</p>	<p>UPPER DOOR HINGE (LEFT)</p> <p>IBS NUMBER: 10086564</p>	<p>UPPER DOOR HINGE (RIGHT)</p> <p>IBS NUMBER: 10086558</p>
<p>UPPER NOSE (1000~2 TIER)</p> <p>IBS NUMBER: 10086553</p>	<p>UPPER NOSE (600~2 TIER~LEFT)</p> <p>IBS NUMBER: 10087890</p>	<p>UPPER NOSE (600~2 TIER~RIGHT)</p> <p>IBS NUMBER: 10087882</p>	<p>UPPER NOSE (600~3 TIER~LEFT)</p> <p>IBS NUMBER: 10088614</p>

**NOTE**

If the part required is not listed, please contact [customer.support@flexeserve.com](mailto:customer.support@flexeserve.com) or call toll-free 833 955 8300.

Model numbers relating to this parts list include:

2 TIER	3 TIER
FZ10D2S61	FZ60L3S61
FZ60L2S61	FZ60R3S61

© 2022 **The Alan Nuttall Partnership Ltd**

*Do not copy without written permission from The Alan Nuttall Partnership Ltd. All contents of this document remain the intellectual property of The Alan Nuttall Partnership Ltd.*