

BIELA14 Series Gen II LOV™ Electric Fryer



Parts Manual

This manual is updated as new information and models are released. Visit our website for the latest manual.
This equipment chapter is to be installed in the Fryer Section of the *Equipment Manual*.



FOR YOUR SAFETY

Do Not Store or use gasoline or other flammable vapors and liquids in the vicinity of this or any other appliance.



Part Number: FRY_P_8197260 10/2023



NOTICE

IF, DURING THE WARRANTY PERIOD, THE CUSTOMER USES A PART FOR THIS FRYMASTER DEAN EQUIPMENT OTHER THAN AN UNMODIFIED NEW OR RECYCLED PART PURCHASED DIRECTLY FROM FRYMASTER DEAN, OR ANY OF ITS FACTORY AUTHORIZED SERVICERS, AND/OR THE PART BEING USED IS MODIFIED FROM ITS ORIGINAL CONFIGURATION, THIS WARRANTY WILL BE VOID. FURTHER, FRYMASTER DEAN AND ITS AFFILIATES WILL NOT BE LIABLE FOR ANY CLAIMS, DAMAGES OR EXPENSES INCURRED BY THE CUSTOMER WHICH ARISE DIRECTLY OR INDIRECTLY, IN WHOLE OR IN PART, DUE TO THE INSTALLATION OF ANY MODIFIED PART AND/OR PART RECEIVED FROM AN UNAUTHORIZED SERVICER.

NOTICE

This appliance is intended for professional use only and is to be operated by qualified personnel only. A Frymaster Authorized Servicer (FAS) or other qualified professional should perform installation, maintenance, and repairs. Installation, maintenance, or repairs by unqualified personnel may void the manufacturer's warranty. See Chapter 1 of this manual for definitions of qualified personnel.

NOTICE

This equipment must be installed in accordance with the appropriate national and local codes of the country and/or region in which the appliance is installed. See NATIONAL CODE REQUIREMENTS in Chapter 2 of this manual for specifics.

NOTICE TO U.S. CUSTOMERS

This equipment is to be installed in compliance with the basic plumbing code of the Building Officials and Code Administrators International, Inc. (BOCA) and the Food Service Sanitation Manual of the U.S. Food and Drug Administration.

NOTICE

This appliance is intended to be used for commercial applications, for example in kitchens of restaurants, canteens, hospitals and in commercial enterprises such as bakeries, butcheries, etc., but not for continuous mass production of food.

NOTICE

Drawings and photos used in this manual are intended to illustrate operational, cleaning and technical procedures and may not conform to onsite management operational procedures.

NOTICE TO OWNERS OF UNITS EQUIPPED WITH COMPUTERS

U.S.

This device complies with Part 15 of the FCC rules. Operation is subject to the following two conditions: 1) This device may not cause harmful interference, and 2) This device must accept any interference received, including interference that may cause undesired operation. While this device is a verified Class A device, it has been shown to meet the Class B limits.

CANADA

This digital apparatus does not exceed the Class A or B limits for radio noise emissions as set out by the ICES-003 standard of the Canadian Department of Communications.

Cet appareil numérique n'émet pas de bruits radioélectriques dépassant les limites de classe A et B prescrites dans la norme NMB-003 édictée par le Ministre des Communications du Canada.

 **DANGER**

Improper installation, adjustment, maintenance or service, and unauthorized alterations or modifications can cause property damage, injury, or death. Read the installation, operating, and service instructions thoroughly before installing or servicing this equipment.

NOTICE

The appliance must be installed and used in such a way that any water cannot contact the fat or oil.

 **DANGER**

The front ledge of this appliance is not a step! Do not stand on the appliance. Serious injury can result from slips or contact with the hot oil.

 **DANGER**

Do not store or use gasoline or other flammable liquids or vapors in the vicinity of this or any other appliance.

 **DANGER**

The crumb tray in fryers equipped with a filter system must be emptied into a fireproof container at the end of frying operations each day. Some food particles can spontaneously combust if left soaking in certain shortening material.

 **WARNING**

Do not bang fry baskets or other utensils on the fryer's joiner strip. The strip is present to seal the joint between the fry vessels. Banging fry baskets on the strip to dislodge shortening will distort the strip, adversely affecting its fit. It is designed for a tight fit and should only be removed for cleaning.

 **DANGER**

Adequate means must be provided to limit the movement of this appliance without depending on or transmitting stress to the electrical conduit. A restraint kit is provided with the fryer. If the restraint kit is missing contact your local KES.

 **DANGER**

This fryer has a power cord (three-phase) for each frypot and a single five-wire cord for the entire system. Prior to movement, testing, maintenance and any repair on your Frymaster fryer; disconnect **ALL** electrical power cords from the electrical power supply.

 **DANGER**

Keep all items out of drains. Closing actuators may cause damage or injury.

NOTICE

The instructions in this manual for using a bulk oil system for filling and discarding oil are for an RTI system. These instructions may not be applicable to other bulk oil systems.

LOV™ ELECTRIC WARRANTY STATEMENT

Frymaster, L.L.C. makes the following limited warranties to the original purchaser only for this equipment and replacement parts:

A. WARRANTY PROVISIONS - FRYERS

1. Frymaster L.L.C. warrants all components against defects in material and workmanship for a period of two years.
2. All parts, with the exception of the frypot, O-rings and fuses, are warranted for two years after installation date of fryer.
3. If any parts, except fuses and filter O-rings, become defective during the first two years after installation date, Frymaster will also pay straight-time labor costs up to two hours to replace the part, plus up to 100 miles/160 km of travel (50 miles/80 km each way).

B. WARRANTY PROVISIONS - FRYPOTS

The frypot has a lifetime parts and labor warranty. If a frypot develops a leak after installation, Frymaster will replace the frypot, allowing up to the maximum time per the Frymaster time allowance chart hours of straight-time labor. Components attached to the frypot, such as the high-limit, probe, gaskets, seals, and related fasteners, are also covered by the lifetime warranty if replacement is necessitated by the frypot replacement. Leaks due to abuse or from threaded fittings such as probes, sensors, high-limits, drain valves or return piping are not included.

C. PARTS RETURN

All defective in-warranty parts must be returned to a Frymaster Authorized Factory Service Center within 60 days for credit. After 60 days, no credit will be allowed.

D. WARRANTY EXCLUSIONS

This warranty does not cover equipment that has been damaged due to misuse, abuse, alteration, or accident such as:

- improper or unauthorized repair (including any frypot which is welded in the field);
- failure to follow proper installation instructions and/or scheduled maintenance procedures as prescribed in your MRC cards. Proof of scheduled maintenance is required to maintain the warranty;
- improper maintenance;
- damage in shipment;
- abnormal use;
- removal, alteration, or obliteration of either the rating plate or the date code on the heating elements;

- operating the frypot without shortening or other liquid in the frypot;
- no fryer will be warranted under the ten-year program for which a proper start-up form has not been received.

This warranty also does not cover:

- transportation or travel over 100 miles/160 km (50 miles/80 km each way), or travel over two hours;
- overtime or holiday charges;
- consequential damages (the cost of repairing or replacing other property which is damaged), loss of time, profits, use or any other incidental damages of any kind.

There are no implied warranties of merchantability or fitness for any particular use or purpose.

This warranty is applicable at the time of this printing and is subject to change.

ELECTRICAL POWER SPECIFICATIONS

VOLTAGE	PHASE	WIRE SERVICE	MIN. SIZE	AWG (mm²)	AMPS PER LEG		
					L1	L2	L3
208	3	3	6	(16)	39	39	39
240	3	3	6	(16)	34	34	34
480	3	3	8	(10)	17	17	17
220/380	3	4	6	(16)	21	21	21
240/415	3	4	6	(16)	20	20	21
230/400	3	4	6	(16)	21	21	21

BIELA14 SERIES GEN II LOV™ ELECTRIC FRYERS

PARTS

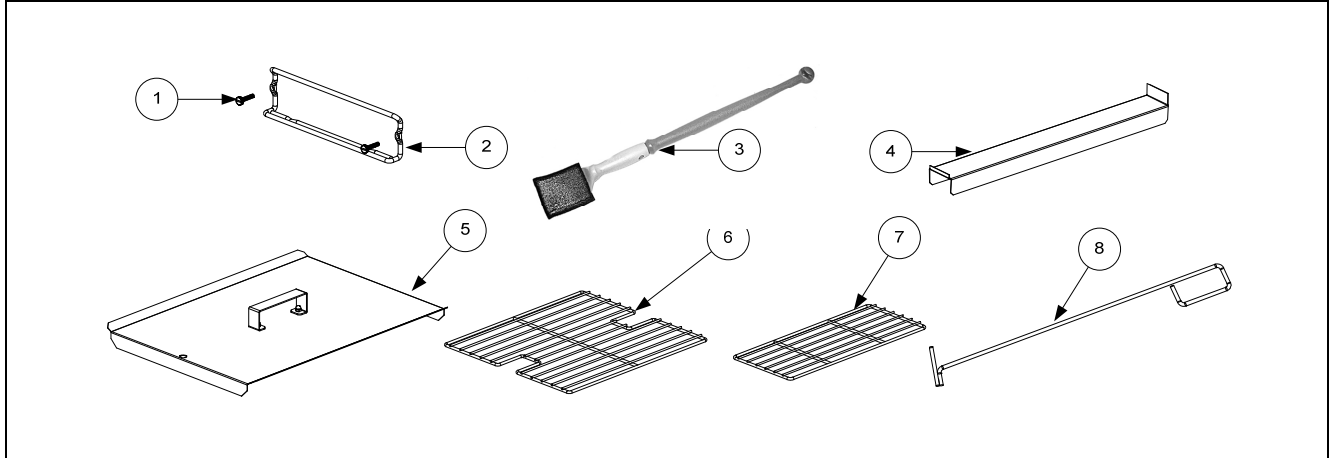
TABLE OF CONTENTS

CAUTIONARY STATEMENTS	i
WARRANTY STATEMENT	ii
ELECTRICAL POWER SPECIFICATIONS	iii
CHAPTER 1: Parts List	
1.1 Accessories	1-1
1.2 Doors, Sides, Tilt Housings, Cap N Splash, Top Caps and Casters	1-2
1.3 Drain System Components	1-3
1.3.1 Drain Tube Sections and Associated Parts	1-3
1.3.2 Drain Valves and Associated Parts	1-4
1.4 Electronics and Electrical Components	1-5
1.4.1 Component Boxes	1-5
1.4.2 Contactor Boxes	1-7
1.4.3 Heating Element Assemblies and Associated Parts	1-9
1.4.3.1 Element Assemblies and Hardware	1-9
1.4.3.2 Element Tube Assemblies	1-11
1.4.4 Computers.....	1-12
1.4.5 Wiring.....	1-13
1.4.5.1 Contactor Box Wiring Assemblies 12-Pin Dual Vat	1-13
1.4.5.2 Contactor Box Wiring Assemblies 12-Pin Full Vat	1-13
1.4.5.3 Contactor Box Wiring Assemblies 6-Pin Left Element	1-14
1.4.5.4 Contactor Box Wiring Assemblies 9-Pin Right Element	1-14
1.4.5.5 Main Wiring Harnesses	1-15
1.4.5.6 Component Box and Filter Pump Wiring Harnesses	1-16
1.4.5.7 Interface Board to Controller Wiring Harness 15-Pin	1-16
1.4.5.8 M3000, MIB, AIF and ATO Wiring Harnesses	1-17
1.5 Filtration System Components	1-18
1.5.1 Filtration Components	1-18
1.5.2 Auto Intermittent Filtration Components	1-20
1.5.2.1 LOV Indicator Lights Assembly	1-20
1.5.2.2 Manual Interface Board Assembly	1-20
1.5.2.3 AIF Linear Actuator Board Assembly	1-21
1.5.2.4 LOV PCB Board Matrix.....	1-21
1.6 Frypot Assemblies and Associated Components	1-22
1.7 Oil Return Manifolds.....	1-24
1.8 Return Valves and Associated Parts	1-24
1.9 Auto Top Off Components.....	1-25
1.9.1 JIB Basket	1-25
1.9.2 JIB Cap and Pick Up Assembly	1-25
1.9.3 Automatic Top Off Board Assembly	1-26
1.9.4 ATO Pump Assembly	1-27
1.9.5 ATO Pump Assembly Service Kit (Larger Top Off Lines)	1-28
1.9.6 Shrotening Melting Unit.....	1-29
1.10 RTI.....	1-30
1.10.1 RTI Manifold and Accessories	1-30
1.10.2 RTI Dispose Waste Valve.....	1-32
1.10.3 RTI test Box.....	1-32
1.11 Wiring Connectors, Pin Terminals and Power Cords.....	1-33
1.12 Fasteners	1-34
1.13 Oil Quality Sensor (OQS) and Associated Parts	1-35

BIELA14 SERIES GEN II LOV™ ELECTRIC FRYERS

CHAPTER 1: PARTS LIST

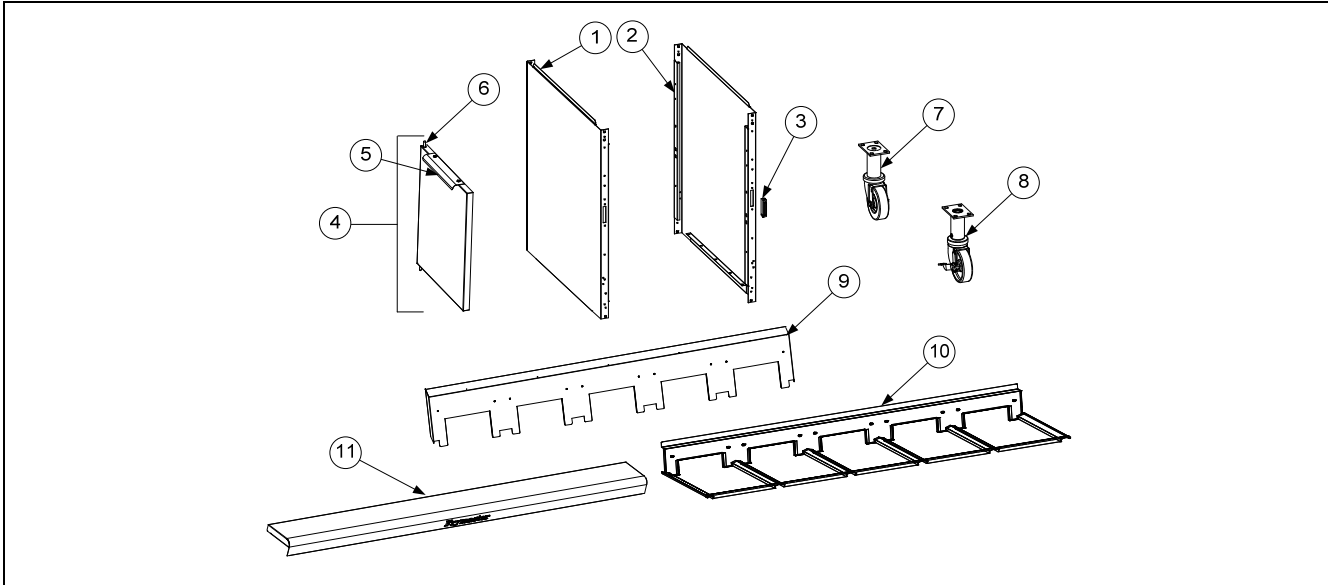
1.1 Accessories



ITEM	PART #	COMPONENT
1	8090171	Thumbscrew, ¼ -20 X 1 ³ / ₈ -inch Universal Hood
	8090402	Thumbscrew, ¼ -20 X ½-inch Cap-N-Splash Hood
2	8102793	Hanger, Wireform Basket
*	8090921	Spacer, Basket Hanger
3	8030430	Brush, Frypot Ecolab
4	8237263	Connecting Strip, Frypot prior to 07/2014
	8238963	Connecting Strip, Frypot after 06/2014
5	1068325	Cover, Full-Vat Frypot
*	1068329	Cover, Dual-Vat Frypot
*	8260993SP	Handle Kit, Frypot Cover (includes handle and screws)
6	8030132	Rack, Full-Vat Basket Support
7	8030106	Rack, Dual-Vat Basket Support
8	8030388	Element Lift / Fryers Friend LOV™

*Not illustrated.

1.2 Doors, Sides, Tilt Housings, Cap-N-Splash, Top Caps and Casters

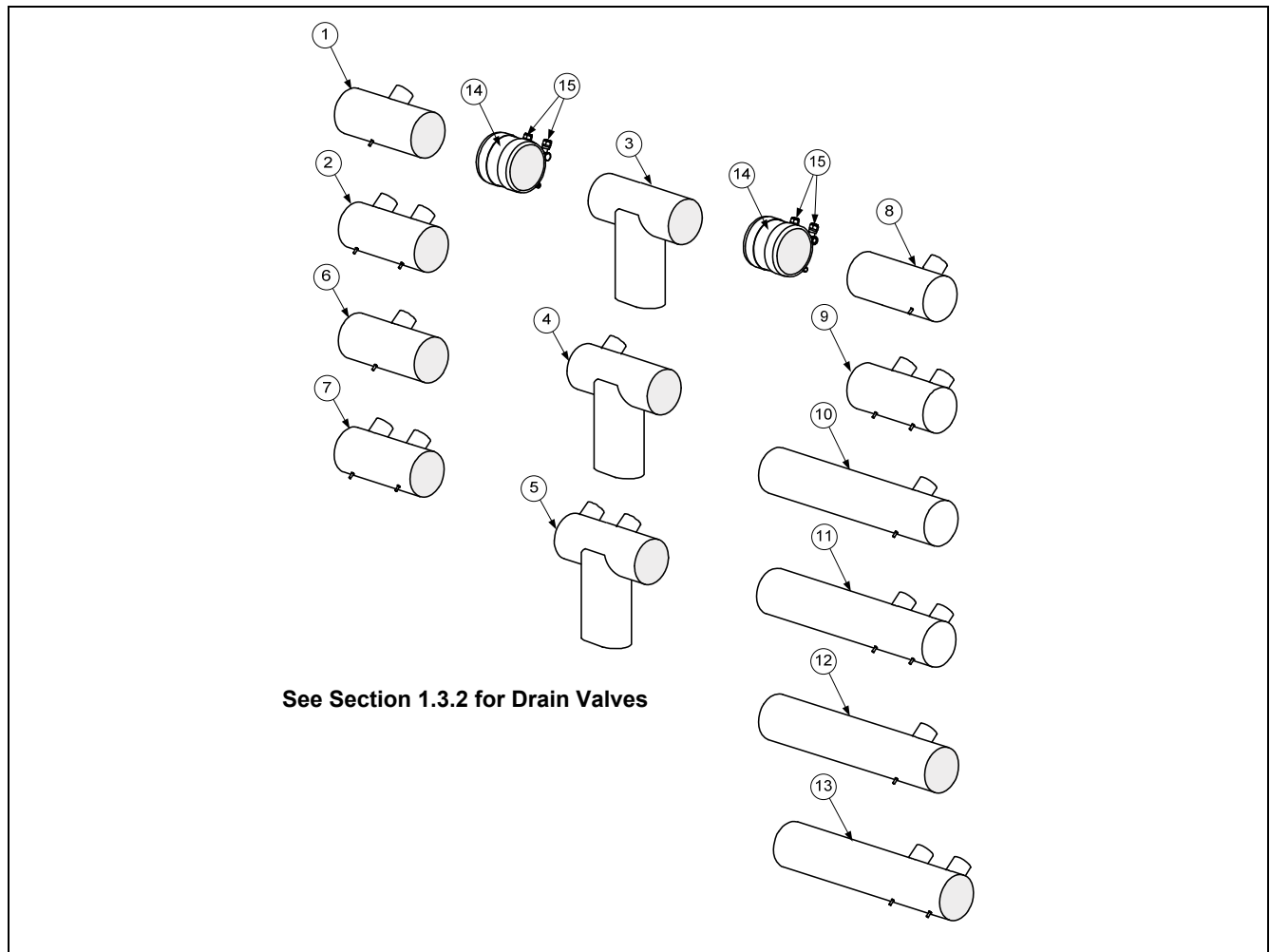


ITEM	PART #	COMPONENT
1	2310323	Side, Standard Cabinet Left SS (use 2210323 for Enameled Steel)
2	2320323	Side, Standard Cabinet Right SS (use 2220323 for Enameled Steel)
3	8101105	Magnet, Door (vertical) (use 8102346 for horizontal over filter pan)
4	1080915	Door, Left or Right (Left shown – move handle to bottom for right)
5	2304960	Handle, Eurolook Door
6	1064067SP	Pin Assembly, Door
*	8100275	Spring, Door Pin
*	8090970	Retaining Ring
*	2307192	Hinge, Door Lower
*	2206097	Holder, Manual
7	8100327	Caster without Brake
8	8100326	Caster with Brake
9		Tilt Housing (Housing for five station fryer shown)
	8236085	Two Station, S/S (use 1080131 for Aluminized Steel) (9102441 Hoodstrip)
	8235700	Three Station, S/S (use 1080132 for Aluminized Steel) (9102440 Hoodstrip)
	8236151	Four Station, S/S (use 1080133 for Aluminized Steel) (9102439 Hoodstrip)
	8236243	Five Station, S/S (use 1080138) for Aluminized Steel) (9109447 Hoodstrip)
10		Cap-N-Splash
	8236420	Two Station
	8236421	Three Station
	8236422	Four Station
	8236887	Five Station
11		Top Cap (Top cap for five station fryer shown)
	1067835	Two Station (Req 4- 8090078 10-32 Nutserts) prior to 07/2014
	1086162SP	Two Station (Req 4- 8090078 10-32 Nutserts) after 06/2014
	1065979	Three Station (Req 6-8090078 10-32 Nutserts) prior to 07/2014
	1086163SP	Three Station (Req 6-8090078 10-32 Nutserts) after 06/2014
	1067576	Four Station (Req 8- 8090078 10-32 Nutserts) prior to 07/2014
	1086164	Four Station (Req 8- 8090078 10-32 Nutserts) after 06/2014
	1067841	Five Station (Req10-8090078 10-32 Nutserts) prior to 07/2014
	1086165	Five Station (Req10-8090078 10-32 Nutserts) after 06/2014

* Not illustrated.

1.3 Drain System Components

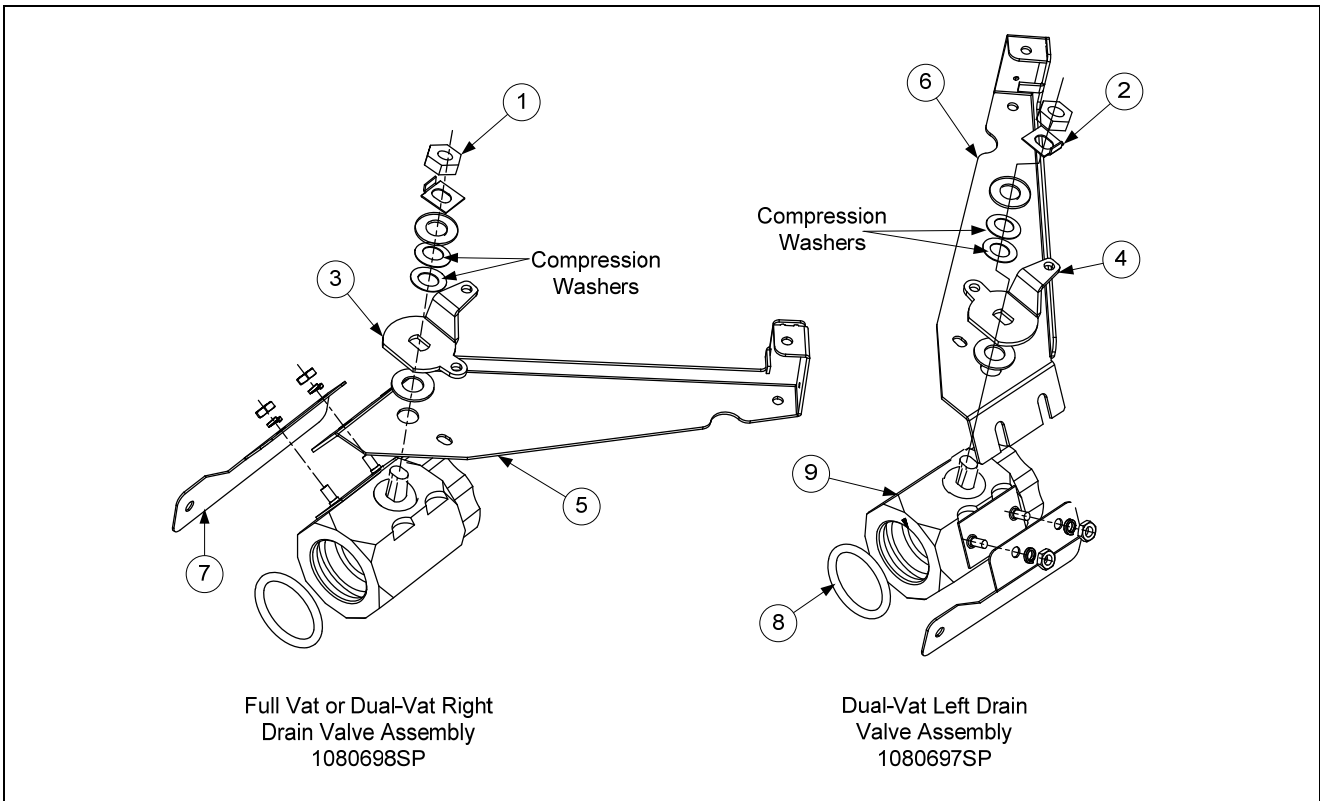
1.3.1 Drain Tube Sections and Associated Parts



ITEM	PART#	COMPONENT
1	8236020	Drain Tube, Full-Vat Left Closed/Right End Open
2	8236112	Drain Tube, Dual-Vat Left Closed/Right End Open
3	1081874	Drain Tube, Dump (Use 1081882 for French Unit)
4	1081876	Drain Tube, Full-Vat 2 Bat. Dump Left Closed/Right End Open
5	1081878	Drain Tube, Dual-Vat 2 Bat. Dump Left Closed/Right End Open
6	8236019	Drain Tube, Full-Vat Left and Right Open
7	8236021	Drain Tube, Dual-Vat Left and Right Open
8	8236240	Drain Tube, Full-Vat 2 Bat. Left Open/Right End Closed
9	8236242	Drain Tube, Dual-Vat 2 Bat. Left Open/Right End Closed
10	8236202	Drain Tube, Full-Vat Left Open/Right End Closed
11	8236114	Drain Tube, Dual-Vat Left Open/Right End Closed
12	8236117	Drain Tube, Full-Vat Left and Right Open
13	8236115	Drain Tube, Dual-Vat Left and Right Open
14	8160772	Sleeve
15	8090969	Clamp
*	8160630	Vinyl Cap
*	8103531	Valve, Check 20 PSI RTI bypass

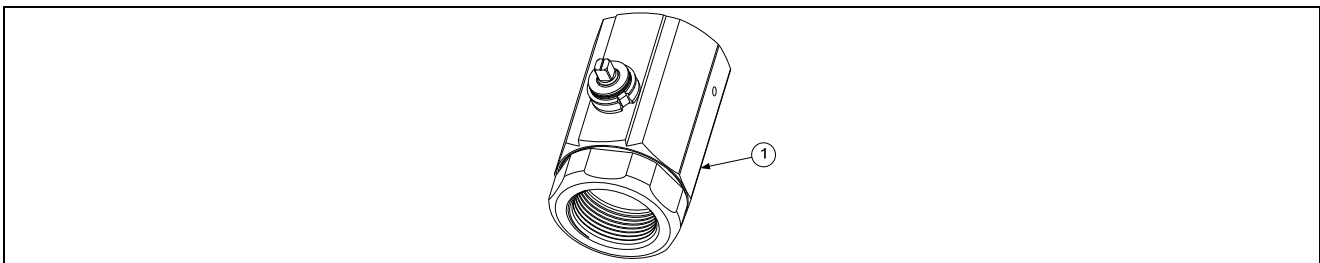
* Not illustrated.

1.3.2 Drain Valves and Associated Parts
1.3.2.1 Linear Actuator Drain Valves (12/2008-12/2011)



ITEM	PART #	COMPONENT
1	8090540	Nut, 1/2-13 2-Way Hex Lock
2	9002936	Retainer, Nut Drain Valve
3	2325701	Handle, Drain Valve FV or DV Right
4	2315701	Handle, Drain Valve DV Left
5	8242048	Mount, Electric Drain Actuator Right
6	8242047	Mount, Electric Drain Actuator Left
7	2225962	Bracket, Drain to Valve LOV™ Electric
8	8160544	O-Ring, Round Drain Seal
9	8237231	Valve, 1 1/4-inch Drain LOV™ Electric Right (12/2008-12/2011)
10	8237230	Valve, 1 1/4-inch Drain LOV™ Electric Left (12/2008-12/2011)

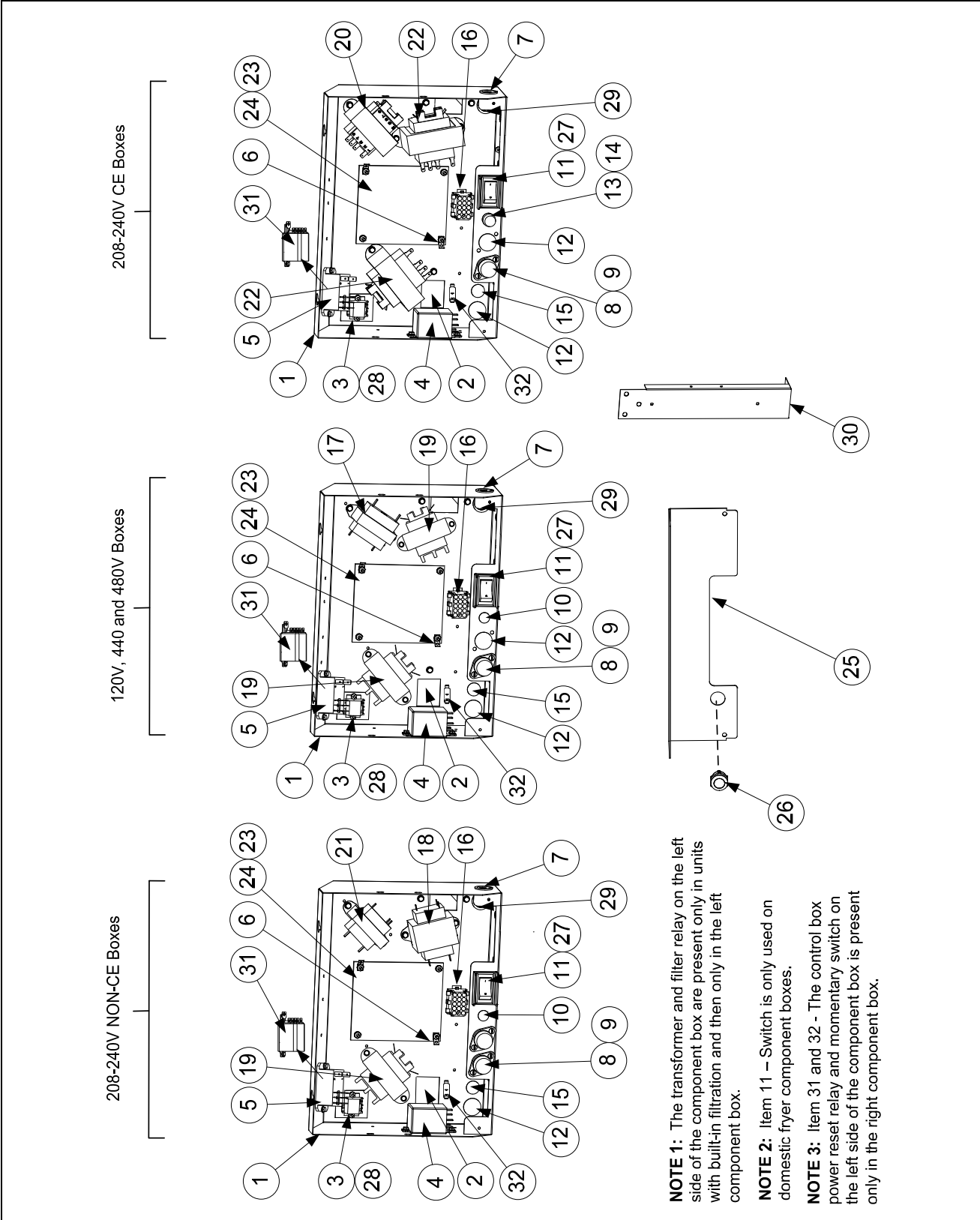
1.3.2.2 Rotary Actuator Drain Valves (01/2012 – Present)



ITEM	PART #	COMPONENT
1	8103755	Valve, 1 1/4-inch NPT Rotary Actuator (01/2012 – Present)

1.4 Electronics and Wiring Components

1.4.1 Component Boxes



NOTE 1: The transformer and filter relay on the left side of the component box are present only in units with built-in filtration and then only in the left component box.

NOTE 2: Item 11 – Switch is only used on domestic fryer component boxes.

NOTE 3: Item 31 and 32 - The control box power reset relay and momentary switch on the left side of the component box is present only in the right component box.

1.4.1 Component Boxes cont.

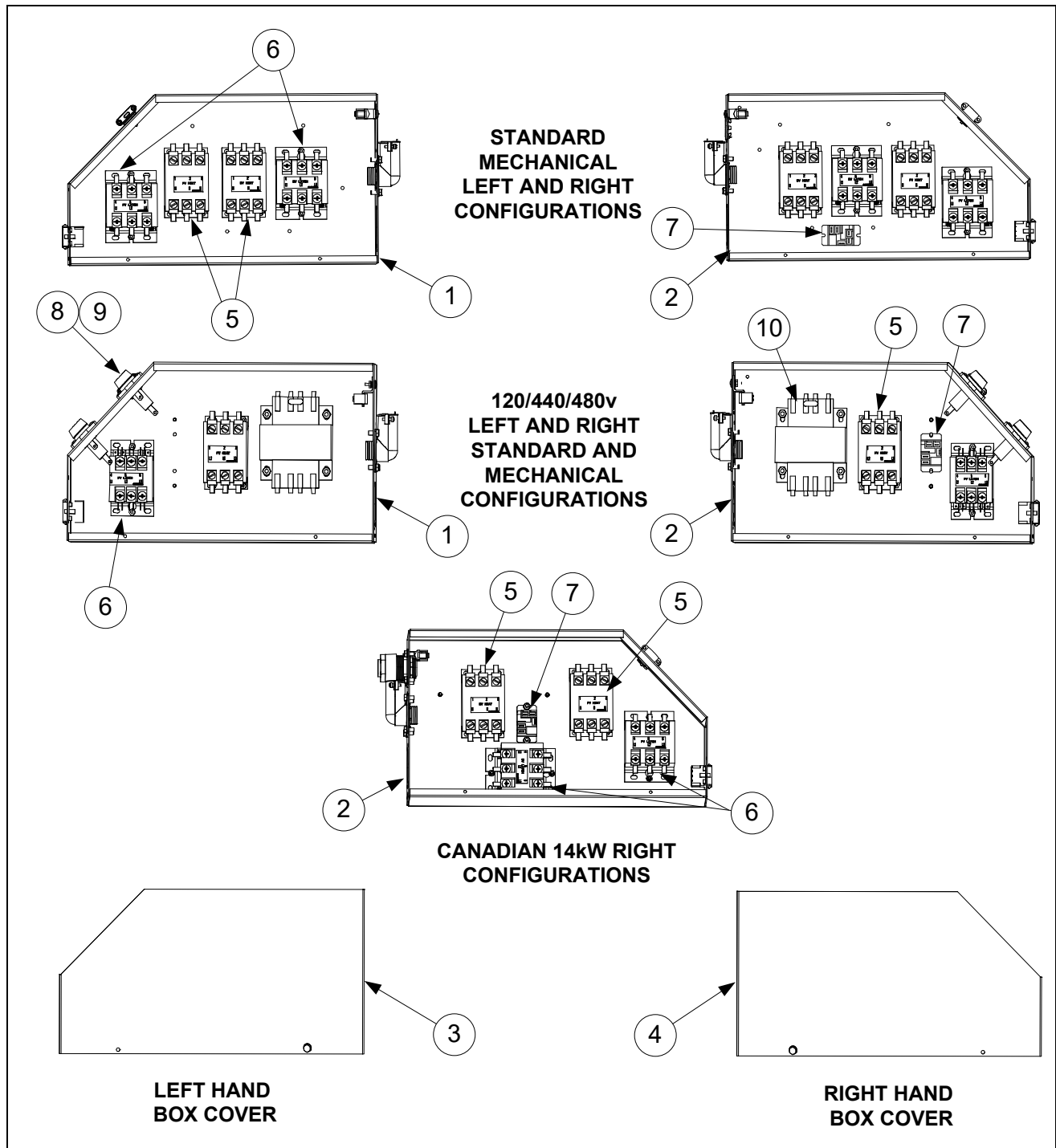
ITEM	PART #	COMPONENT
1	1065592	Box Assembly, Component
2	2003300	Bracket, Component Box Strain Relief
3	8069495SP	Terminal Block
√ 4	8074346	Relay, 120V DPDT 20A <i>(used in Canadian models only)</i>
√ 5	8074482	Relay, Filter 2 Pole 30A DPDT 24VDC
6	8070037	Terminal, ¼-inch Push-on
7	8070121	Bushing, Heyco Plastic AB-625-500
8	8070922	Holder, Buss Fuse HPS Screw Type
9	8072278	Fuse, 20 Amp
10	8102446	Plug, Button .50 Heyco Double "D"
√ 11	8074036	Switch, Power
	8073575	Plug, Carling Switch Hole <i>(used on some models without a switch)</i>
12	8071947	Plug, Button .875 Dome
13	8071321	Holder, AGC Panel Mount ¼" Fuse <i>(Some models use item 10 here.)</i>
14	8071597	Fuse, 3 AMP Slow-Blow
*	8071174	Fuse, 3 AMP, 250V Slow-Blow
15	8102445	Plug, Button .625 Heyco Double "D"
16	1065750	Harness Assembly, RE FV Control
	1065751	Harness Assembly, RE DV Control
√ 17	8070855	Transformer, 120V/12V 20VA
√ 18	8070800	Transformer, 120V/24V 50VA Filter <i>(Used in FV component boxes)</i>
√	8074933	Transformer, 120/208/240/24V 75VA Filter <i>(Used in DV component box)</i>
	8074968	Transformer, 208-250V 24V 75VA <i>(Used in DV component box)</i>
	8074967	Transformer, 100-120V 75VA <i>(Used in DV component box)</i>
√ 19	8072181	Transformer, 100-120V /24V 62VA Filter
√ 20	8072191	Transformer, 208-240V/12V 30VA
√ 21	8070979	Transformer, 208-240V/12V 43VA
√ 22	8072180	Transformer, 208-240V/24V 50VA Filter
23	8090349	Spacer, 4mm X 6mm Aluminum
24		Interface Board
√	8262260	Standard Full or Dual Vat Interface Board <i>(includes sound harness)</i>
*	8074403	Speaker, 4-Watt SMT
25	2204723	Guard, Finger w/ switch opening
26	8074678	Switch, Momentary Flush JIB Reset
27	2305038	Guard, RE Box Switch
28	8160217	Paper, Insulating Terminal Block
29	8100045	Bushing, .875 Diameter 11/16"
30	2006654	Brace, Component Box
√ 31	8074346	Relay, DPDT 20A 120V <i>(used for control power reset in right hand boxes only in domestic and Canadian units)</i>
	8074770	Relay, DPDT 20A 240V <i>(resets control power; right hand boxes only in international units; one in each control box in some units.)</i>
32	8072659	Switch, Momentary <i>(resets control power; located in box over JIB.)</i>
*	8262249	RE Hood/Ansul Interlock Kit <i>(includes terminal block, wires and connectors)</i>

* Not illustrated.

√ Recommended parts.

1.4.2 Contactor Boxes

1.4.2.1 Left and Right Contactor Box Configurations



1.4.2.1 Left and Right Contactor Box Configurations cont.

NOTES: Left and right contactor box assemblies are mirror images of one another. With the exception of the box itself, all components of a left-hand assembly are the same as those in the corresponding right-hand assembly and vice versa except for the hood relay which occurs in the right or large box only. The configurations illustrated show all possible components, but a particular configuration may not have all the components shown.

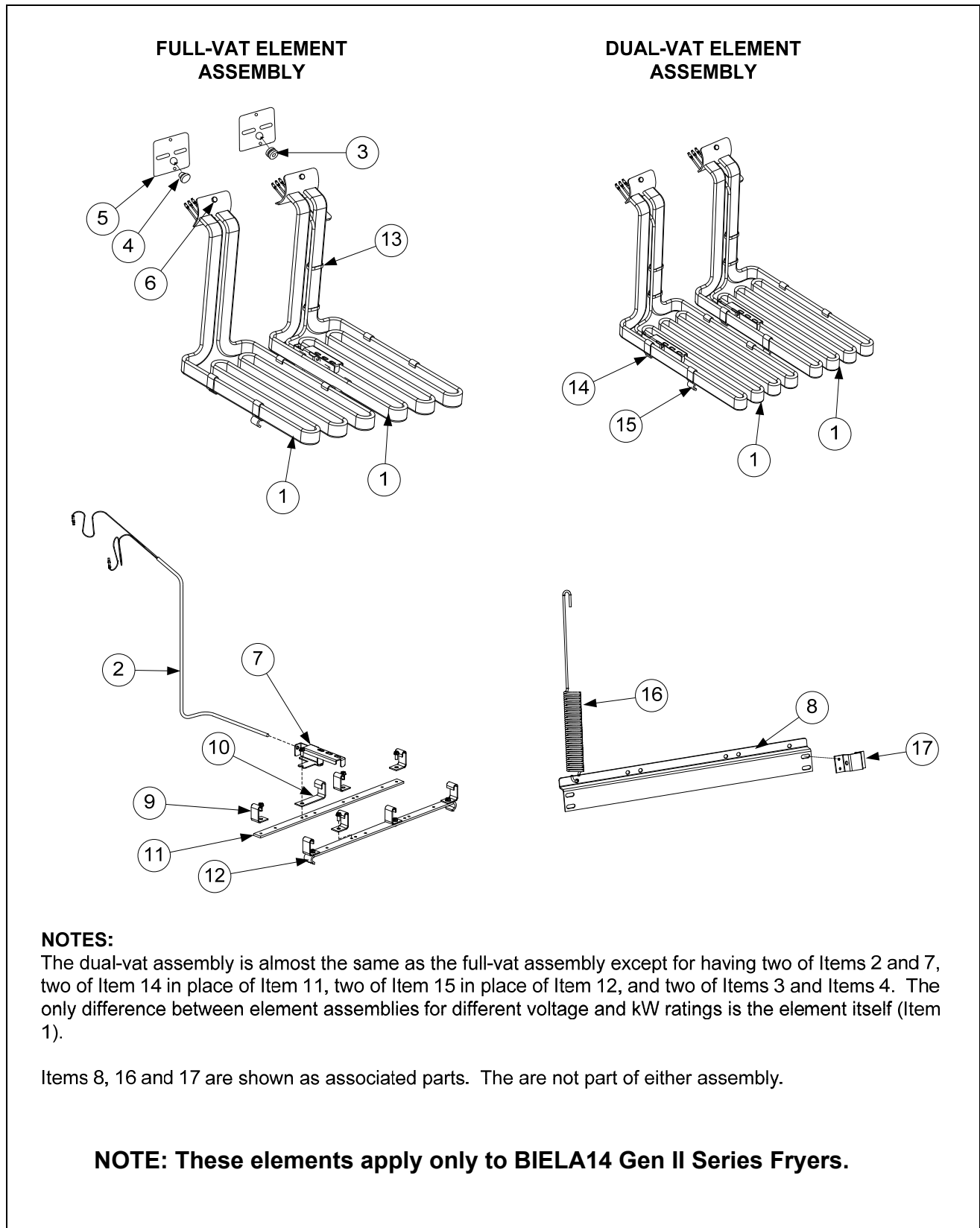
ITEM	PART #	COMPONENT
1	8241896SP	Box Assembly, Left Contactor
2	1068660	Box Assembly, Right Contactor
3	2210482	Cover, Left Hand Contactor Box
4	2220482	Cover, Right Hand Contactor Box
9	8070070	Terminal, Ground Lug
√ 5	8072284	Contactor, 24V 50 Amp Mechanical (Heat)
√ 6	8101202	Contactor, 24V 40 Amp Mechanical (Latch)
7	8071683	Relay, Hood 12VDC
8	8070922	Holder, Bus Fuse
9	8072278	Fuse, 20 Amp
10	8070064	Transformer, 480V/120V 150VA
*	2210610	Bracket, Left Hand Contactor Box Mounting
*	2220610	Bracket, Right Hand Contactor Box Mounting
*	8074316	McDonald's Cordset, 120V 5-Wire
*	8074317	McDonald's Cordset, Europe 3-Wire Single Phase
*	8070012	Relay, Tilt Switch 18 Amp 1/3 HP 24 V Coil

* Not illustrated.

√ Recommended parts.

1.4.3 Heating Element Assemblies and Associated Parts

1.4.3.1 Element Assemblies and Hardware



NOTES:

The dual-vat assembly is almost the same as the full-vat assembly except for having two of Items 2 and 7, two of Item 14 in place of Item 11, two of Item 15 in place of Item 12, and two of Items 3 and Items 4. The only difference between element assemblies for different voltage and kW ratings is the element itself (Item 1).

Items 8, 16 and 17 are shown as associated parts. They are not part of either assembly.

NOTE: These elements apply only to BIELA14 Gen II Series Fryers.

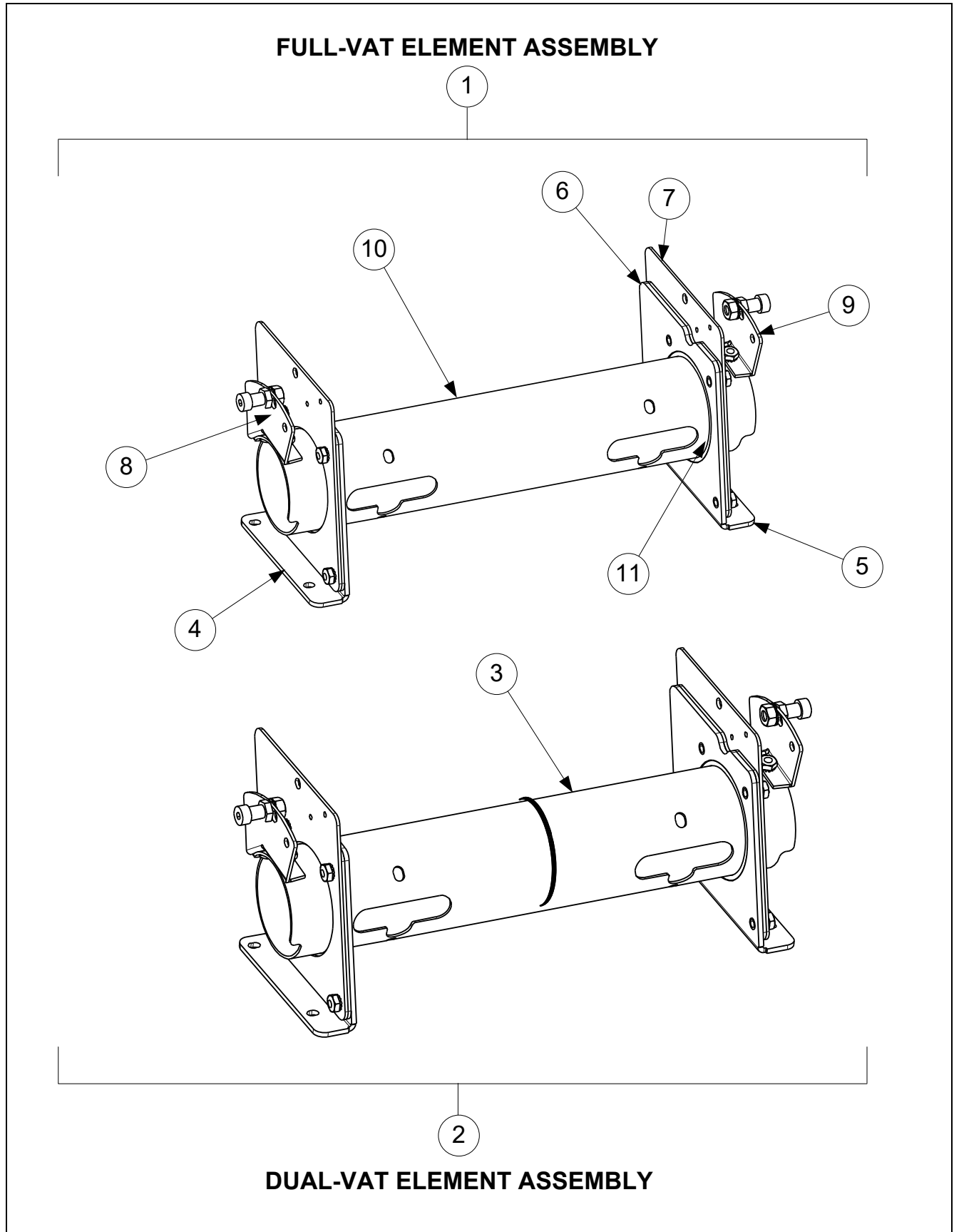
1.4.3.1 Element Assemblies and Hardware cont.

ITEM	PART #	COMPONENT
1		Element
	8262198	200V 7.0 kW (220V 8.5kW used in some export 3-phase 4-wire WYE units)
√	8262192	208V 7.0 kW
	8262200	220V 7.0 kW (240V 8.5kW used in some export 3-phase 4-wire WYE units)
	8262193	230V 7.0 kW
	8262199	230V/400V 7.0/8.5 kW (used in some export 3-phase 4-wire WYE units)
	8262194	240V 7.0 kW
	8262196	480V 7.0 kW
√ 2	8262212	Probe, Temperature RE – includes tie wraps and grommet.
3	8160681	Grommet, Probe
4	8160480	Plug, .375-inch Dome
5	8160688	Gasket, Element
6	8091003	Screw, 10-32 X 3/8-inch Hex Head SS
*	8090766	Nut, 10-32 Keps Hex Head SS
*	2304028	Wrench, Element Tube Nut Spanner
7	2303714	Bracket, Temperature Probe 7.0kW
	2300784	Bracket, Temperature Probe 8.5kW (used in some export 3-phase 4-wire WYE units)
8	2200464	Bracket, Lower Spring
9	9102042	Clamp, Element (Short)
10	2300781	Clamp, Element (Long)
11	2304902	Support, Full-Vat Element Rear
12	2304101	Support, Full-Vat Element Front
13	8090567	Tie-Wrap, Metal
14	2304903	Support, Dual-Vat Element Bottom Rear (use 230-8163 for fish vat)
15	2304103	Support, Dual-Vat Element Bottom Front
16	8103030	Spring, Element Lift Left
	8103031	Spring, Element Lift Right
17	2200733	Bracket, Lower Spring Mating

* Not illustrated.

√ Recommended parts.

1.4.3.2 Element Tube Assemblies

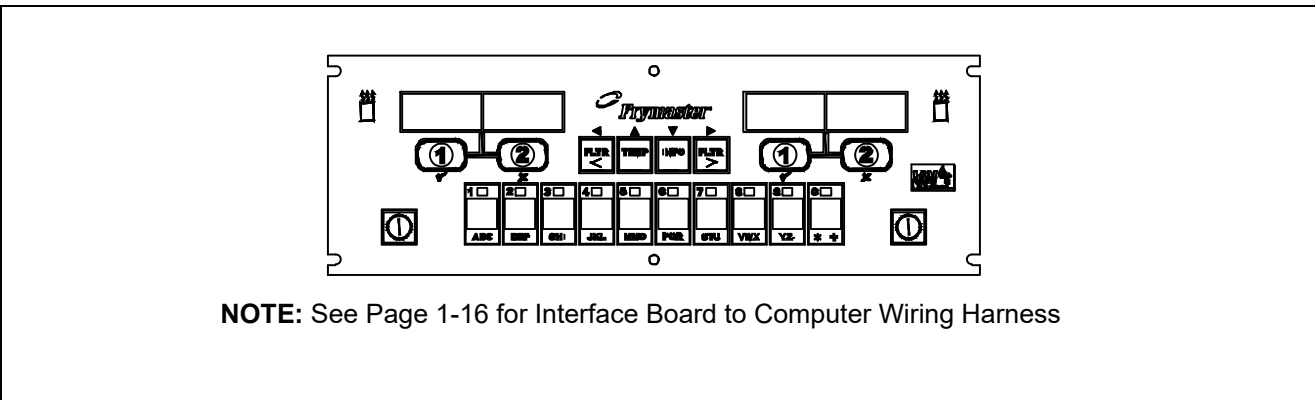


1.4.3.2 Element Tube Assemblies cont.

ITEM	PART #	COMPONENT
1	1080297SP	Tube Assembly RE Element, Full-Vat
2	1080298SP	Tube Assembly RE Element, Dual-Vat
3	8103246	Bushing and Tube Assembly, Dual-Vat
4	1080315	Bracket Assembly, LH Element Tube Support
5	1080316	Bracket Assembly, RH Element Tube Support
6	2200122	Plate, Element Tube Support Inner
7	2200123	Plate, Element Tube Support Outer
8	1067651SP	Bracket Assembly, LH Upper Spring <i>(use 1066569SP for 17kW)</i>
9	1067652SP	Bracket Assembly, RH Upper Spring <i>(use 1066570SP for 17kW)</i>
10	8102992	Tube, Full Vat Element Mounting
11	8102993	Bushing, Tube End Teflon
*	8262598	Kit, Tilt Switch
*	8074742	Switch, Long Lever High Temp

* Not illustrated.

1.4.4 Computers



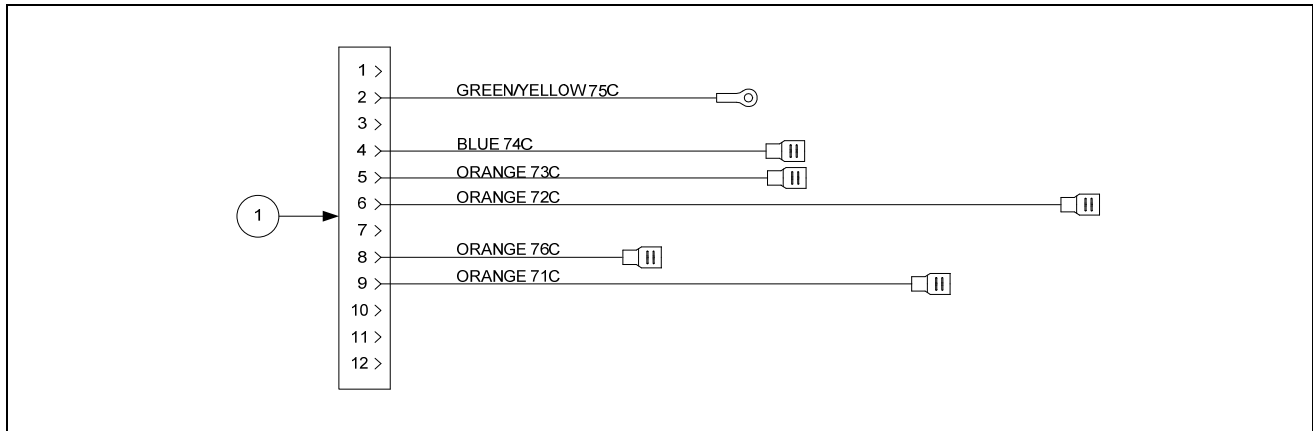
ITEM	PART #	COMPONENT
		Replacement Computer
√	1081284SP	Non-CE Domestic M3000 <i>(For use in US, Canada, Mexico and all other non-CE countries)</i>
√	1081282	CE M3000 <i>(For use in European CE countries)</i>
√	1082969	M3000 <i>(For use in Russia only)</i>
*	8074403	M3000 Speaker SMT

* Not illustrated.

√ Recommended parts.

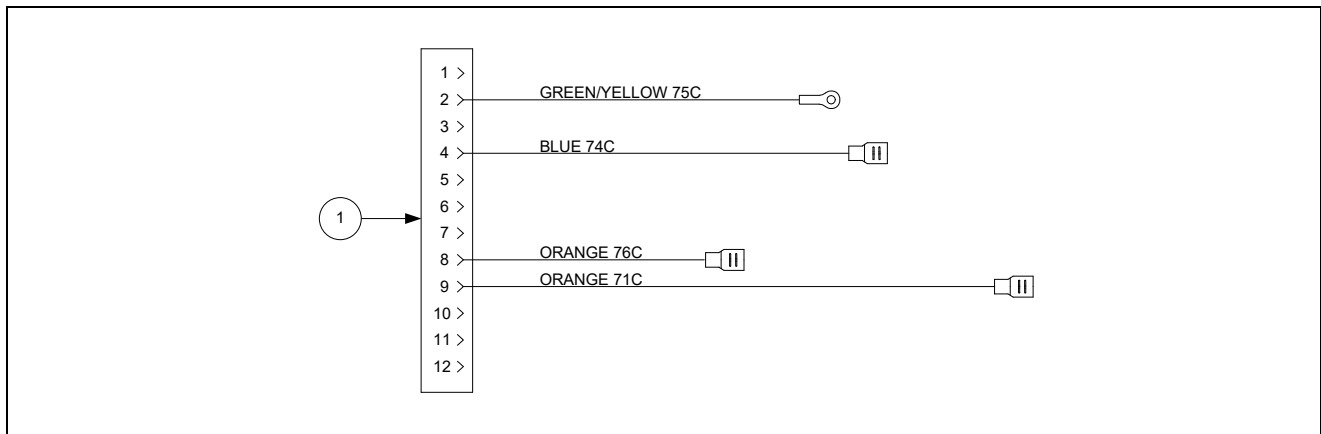
1.4.5 Wiring

1.4.5.1 Contactor Box Wiring Assemblies – 12-Pin Dual-Vat C-1



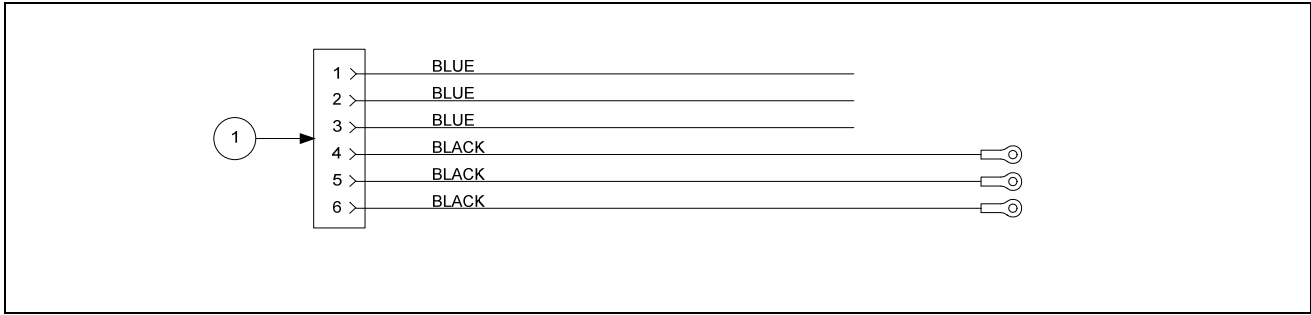
ITEM	PART #	COMPONENT
	1065980SP	Contactor Box Harness Assembly Dual Vat
1		Standard (See wiring diagrams in BIELA14 Wiring Diagrams Manual PN 8197222)

1.4.5.2 Contactor Box Wiring Assemblies – 12-Pin Full-Vat C-1



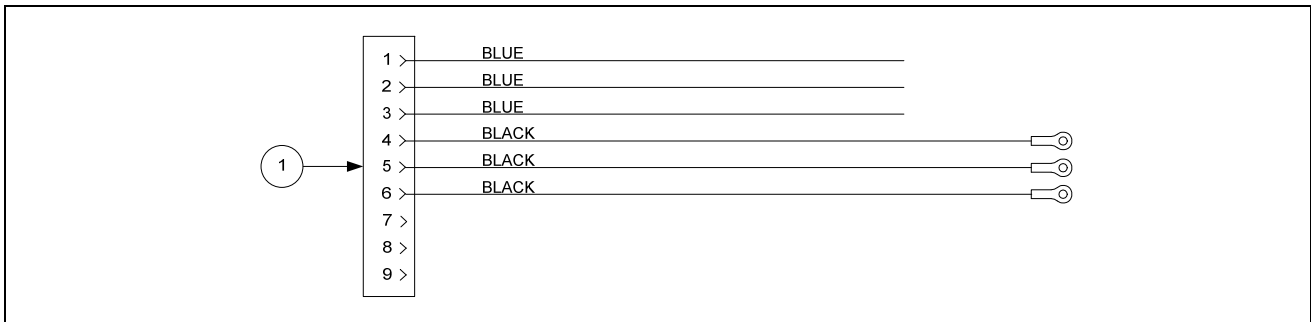
ITEM	PART #	COMPONENT
	1066031SP	Contactor Box Harness Assembly Full Vat
1		Standard (See wiring diagrams in BIELA14 Wiring Diagrams Manual PN 8197222)

1.4.5.3 Contactor Box Wiring Assembly – 6-Pin (Left Element)



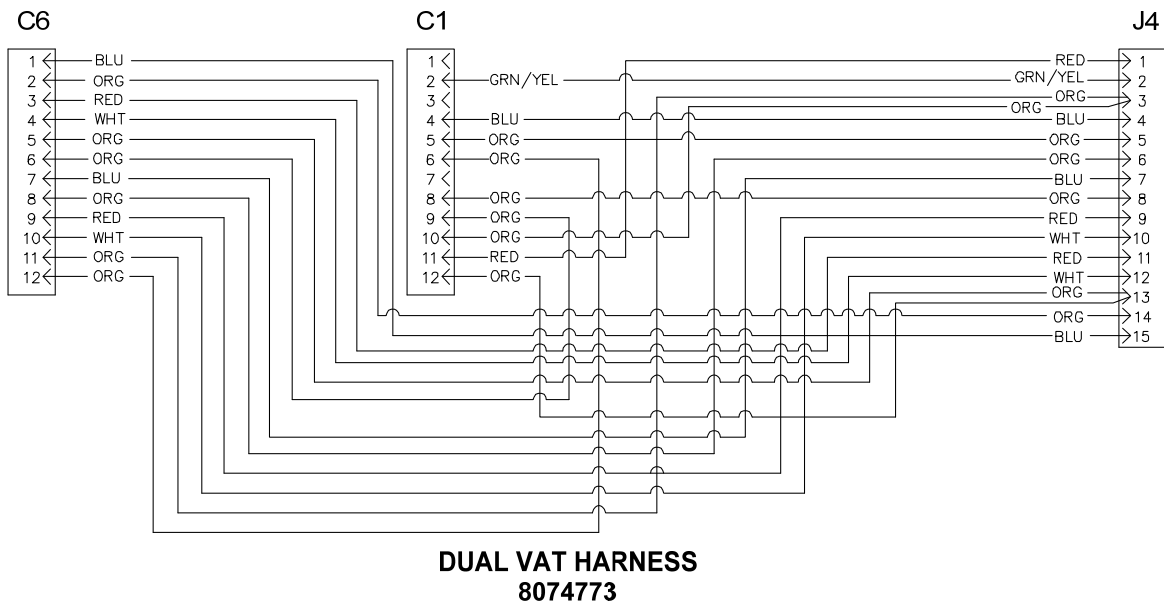
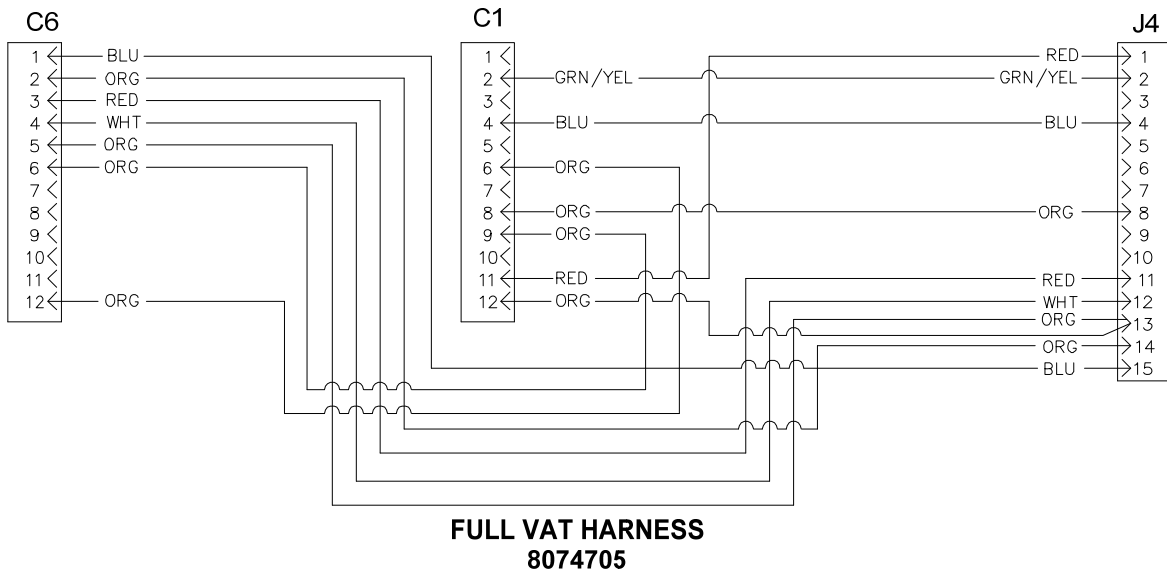
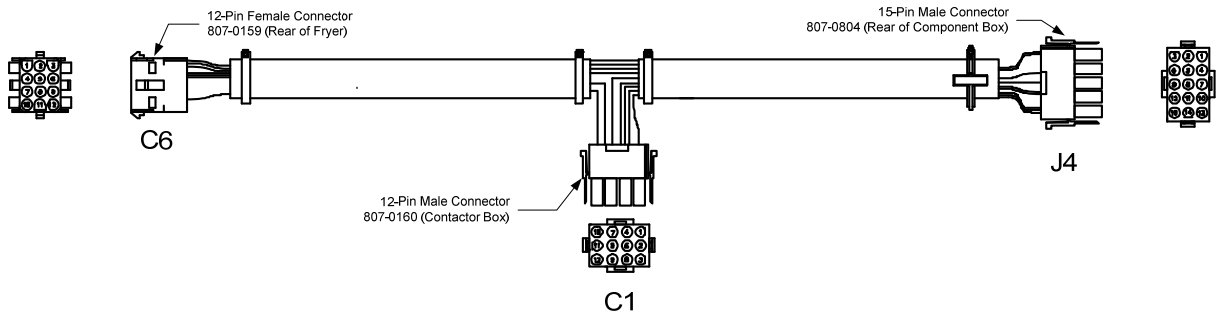
ITEM	PART #	COMPONENT
1	1068744SP	14/17 kW Mechanical Contactor

1.4.5.4 Contactor Box Wiring Assembly – 9-Pin (Right Element)

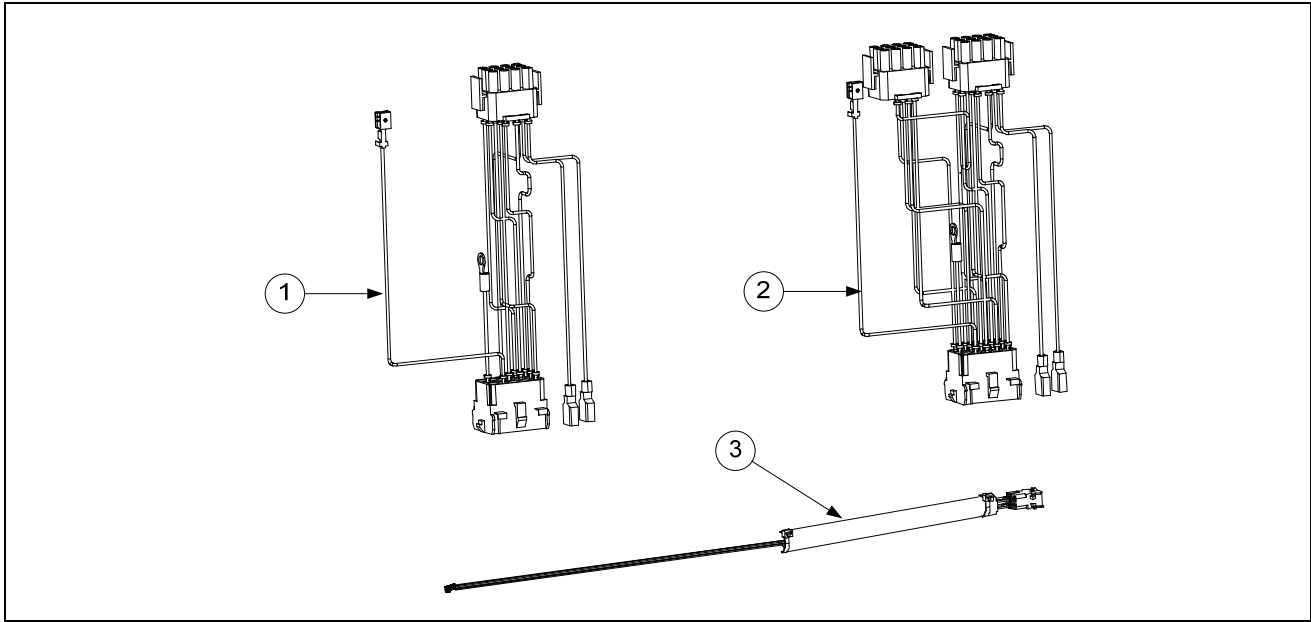


ITEM	PART #	COMPONENT
1	1068745SP	14/17 kW Mechanical Contactor

1.4.5.5 Main Wiring Harnesses

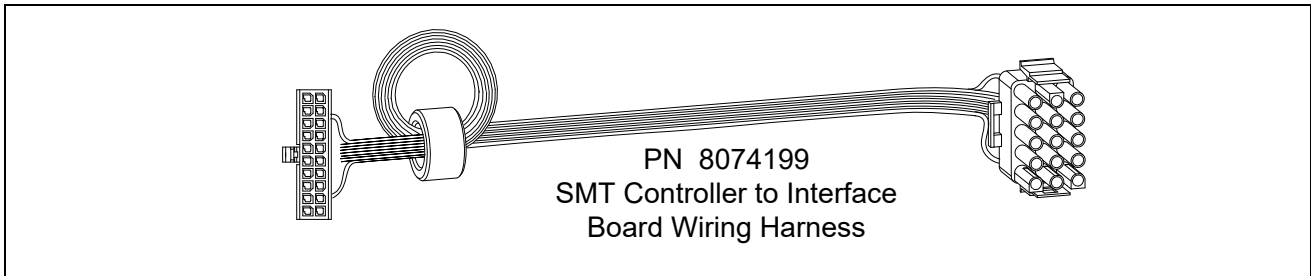


1.4.5.6 Component Box and Filter Pump Wiring Harnesses



ITEM	PART #	COMPONENT
1	1065750SP	Full Vat Control Harness J4 to J2 (<i>Standard</i>)
2	1065751SP	Dual Vat Control Harness J4 to J1 and J2 (<i>Standard</i>)
3	1080490	Filter Pump C2 to Component Box Wiring Harness

1.4.5.7 Interface Board to Controller Wiring Harness – 15-Pin



1.4.5.8 M3000, MIB, AIF and ATO Wiring Harnesses

ITEM	PART #	COMPONENT
*	8074546	Computer Communication (<i>used from Computer to Computer</i>)
*	8074547	AIF Communication/Power (<i>used from MIB to AIF and AIF to AIF</i>)
*	8074649	MIB Power/Blue LED/Pan Sw (<i>used from Transformer and Fltr Rly to MIB to Blue LED and Pan Sw</i>)
*	8074655	FV/DV Harness RTD Medium (<i>used from RTD to ATO Board</i>)
*	8262569	FV/DV ATO/RTD Probe Kit
*	8074553	ATO Power (<i>used from Transformer to ATO Board</i>)
*	8074671	ATO Pump and JIB (<i>used from ATO Board to Top-off Pump and JIB Reset Switch</i>)
*	8074772	ATO Pump and JIB (<i>used from ATO Board to Top-off Pump and JIB Reset Switch</i>) 4-5 Battery only
*	8074555	ATO Yellow LED (<i>used from ATO Board to Yellow LED</i>)
*	8074722	ATO Yellow LED (<i>used from ATO Board to Yellow LED</i>) 4-5 Battery only
*	8074573	Computer Locator Wire (<i>used from Computer to Interface Board</i>) See wiring diagram 8051734 for locator pin positions.
*	8074552	Communications Terminator (<i>used on Computer pin J6 and ATO board pin J10 to terminate network</i>)
	8074657	Jumper (<i>used on 4 and 5 battery ATO board plug J5 pin 7 and 8</i>)
*	1069256SP	Long Top-off Power (<i>used between Component Box to ATO Box</i>)
*	8074760	Harness, LOV™ RTI-MIB connector
√ *	8074660PK	SMT Pin Service Repair Kit
√ *	2302345	SMT Pin Extractor

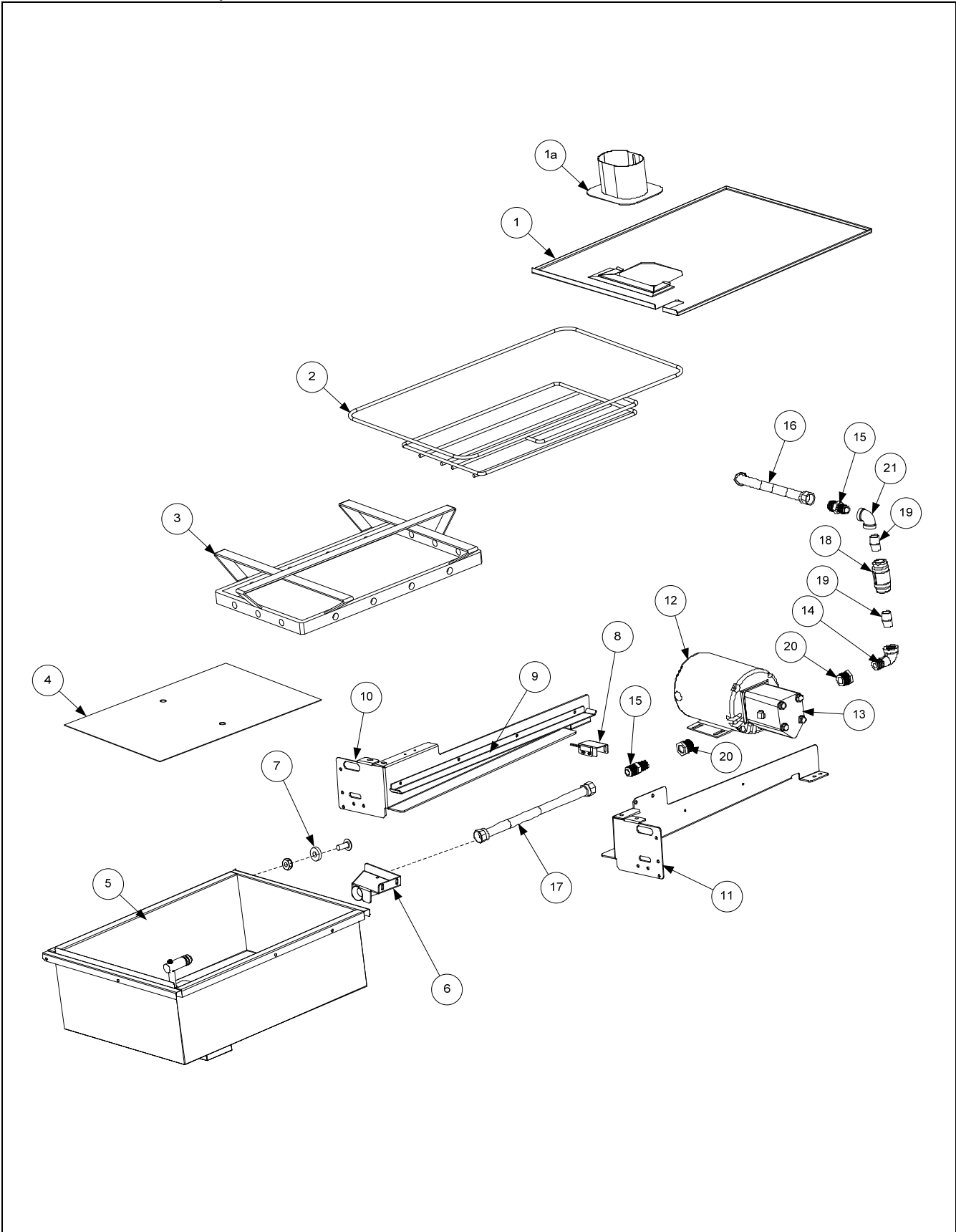
* Not illustrated.

See BIELA Service Manual 8196446 page 1-14, 1-18, 1-27 and 1-36 for Pin Positions.

√ Recommended parts.

1.5 Filtration System Components

1.5.1 Filtration Components



1.5.1 Filtration Components cont.

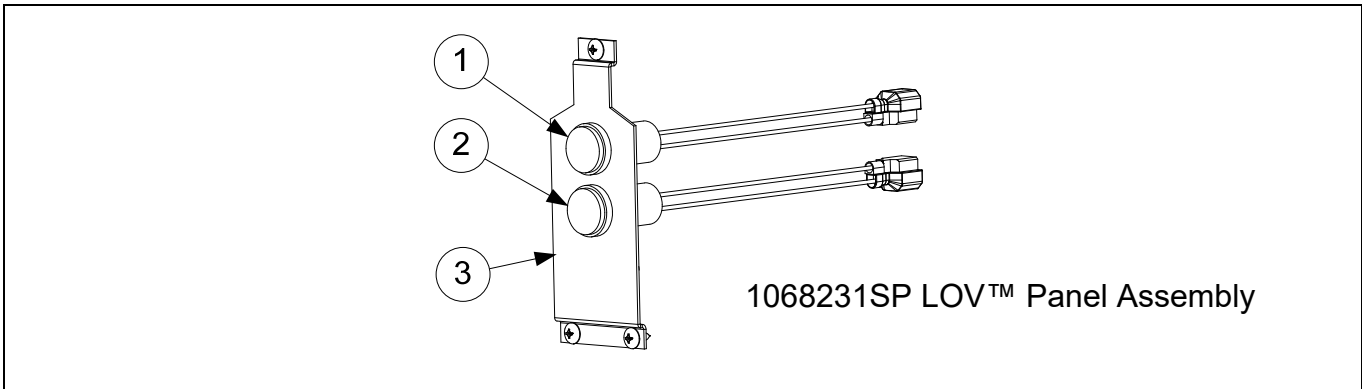
ITEM	PART #	COMPONENT
1	8237635	Lid, Multi-Vat Fryers, Standard Size Filter Pan
	8237634	Lid, Two-Vat Fryer, Half Size Filter Pan
1a	8237186	Guard, Pan Splash Lid
2	8103276	Crumb Tray, Standard Size Filter Pan 3, 4 and 5 Vat
	8103288	Crumb Tray, Two-Vat Fryer, Half Size Filter Pan
3	8103268	Hold-Down Ring 16.56" x 22.32", Standard Size Pan (3, 4, and 5 Vat Fryers)
	8103289	Hold-Down Ring 11.20" x 19.10", Half Size Filter Pan (2-Vat Fryer)
4	2002240	SanaGrid Filter Screen, Standard Size Filter Pan
	2202901	SanaGrid Filter Screen, Two-Vat Fryer, Half Size Filter Pan
5	1080549SP	Pan, One-Piece Filter LOV™ Standard Size
	1068211SP	Pan, Two-Vat Fryer, LOV™ Half Size
6	8236715	Suction Tube Standard LOV™
	8236399	Suction Tube Two Vat LOV™ <i>(France Only)</i>
7	8103007	Magnet, Pull Ring
8	1069251SP	Assembly, Filter Pan Switch Three Vat or more (1065876SP Sensor only)
	1068080SP	Assembly, Filter Pan Switch Two Vat (1065876SP Sensor only)
*	1065876SP	Sensor, Magnet
9	2303936	Rail, Filter Pan Retaining Standard
10	2203748	Support, Left Filter Pan
	2203275	Support, Left Filter Pan Two Vat LOV™
11	2203749	Support, Right Filter Pan
	1068487	Support, Right Filter Pan Two Vat LOV™
12		Motor and Gasket Kit
	8261785	100V 50/60 Hz
√	8261712	115V 50/60 Hz
√	8261756	208V 50/60 Hz
	8261270	220-240V 50/60 Hz
	8261755	250V 50/60 Hz
13	8263192	Pump, Viking 8 GPM Kit (includes gasket 8160093)
*	8091062	Cap Screw, 5/16-inch-18 4.00" NC Hex <i>(Connects pump to motor.)</i> (use 8090194 washers)
14	8130165	Elbow, ST ½-inch x ½-inch NPT 90° BM
15	8101668	Adapter, ⅝-inch to ½-inch NPT Male
16	8101067	Flexline, 8.5-inch Oil Return
17	8101057	Flexline, 13-inch Oil Return
18	8100667	Check Valve ½" NPT
19	8103738	Adaptor, Check Valve Close Nipple
20	8130031	Bushing, ¾" NPT x ½" BM
21	8130062	Elbow, ½-inch x ½-inch 90° BM
√ *	8261392	O-Ring (Pkg. of 5; used with Item 5)
*	8130568	Plug, ⅛-inch Socket Head Pipe (used with Item 5; two required)
*	8071105	Heater Strip Assembly, 100-120V 25W 18"
*	8071098	Heater Strip Assembly, 208-250V 25W 18"
*	1082813	Oil Disposal Connection <i>(France Only)</i>

* Not illustrated.

√ Recommended parts.

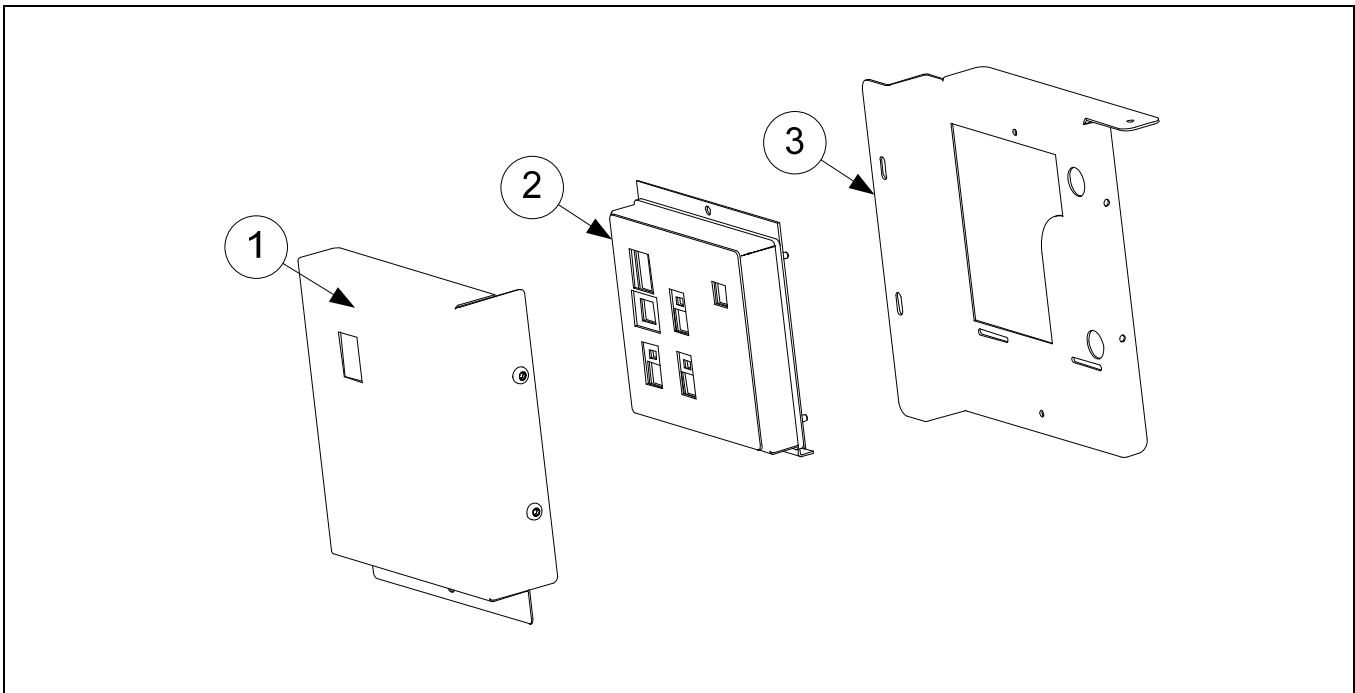
1.5.2 Auto Intermittent Filtration Components

1.5.2.1 LOV™ Indicator Lights Assembly



ITEM	PART #	COMPONENT
1	1068106SP	Light, Blue 24VDC LED Flush
2	1068105SP	Light, Yellow/Orange 24VDC LED Flush
3	2304271	Plate, Control Frame LOV™

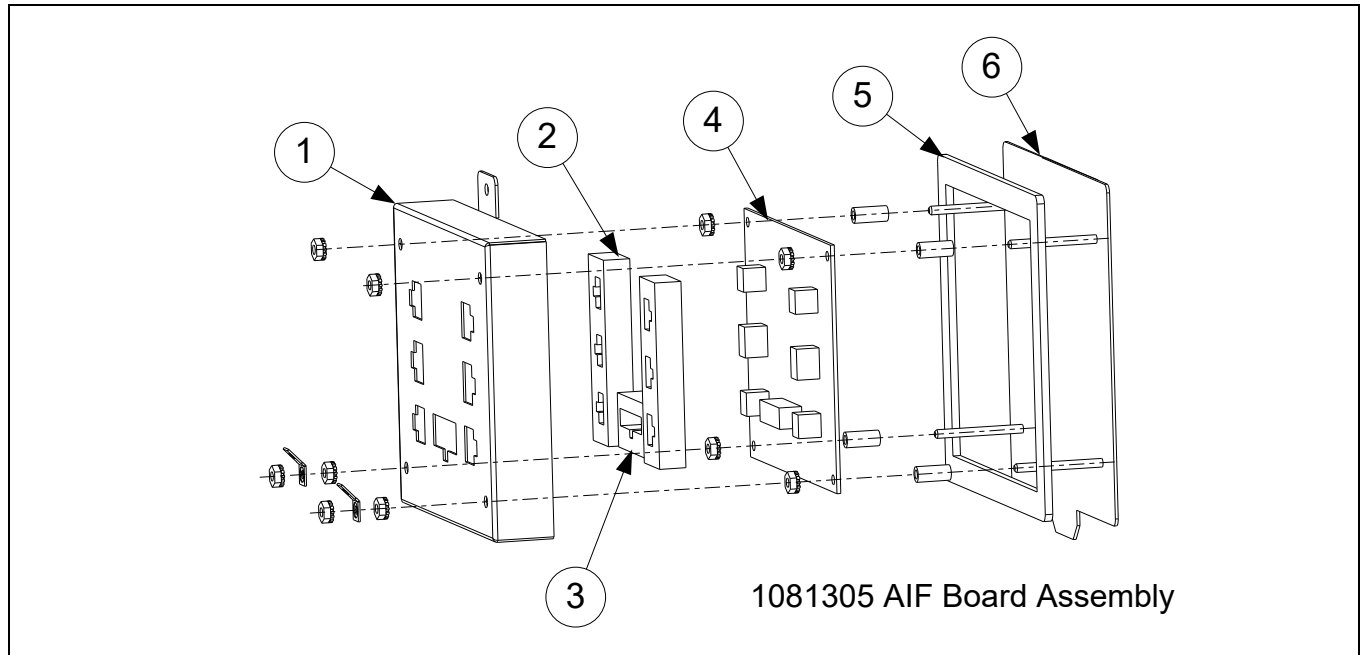
1.5.2.2 Manual Interface Board Assembly



ITEM	PART #	COMPONENT
1	2206288	Cover, MIB
√ 2	1082156	Assembly, MIB Computer w/ Frame
	8074481	Overlay
3	2205793	Assembly Back, Box MIB

√ Recommended parts.

1.5.2.3 AIF Board Assembly



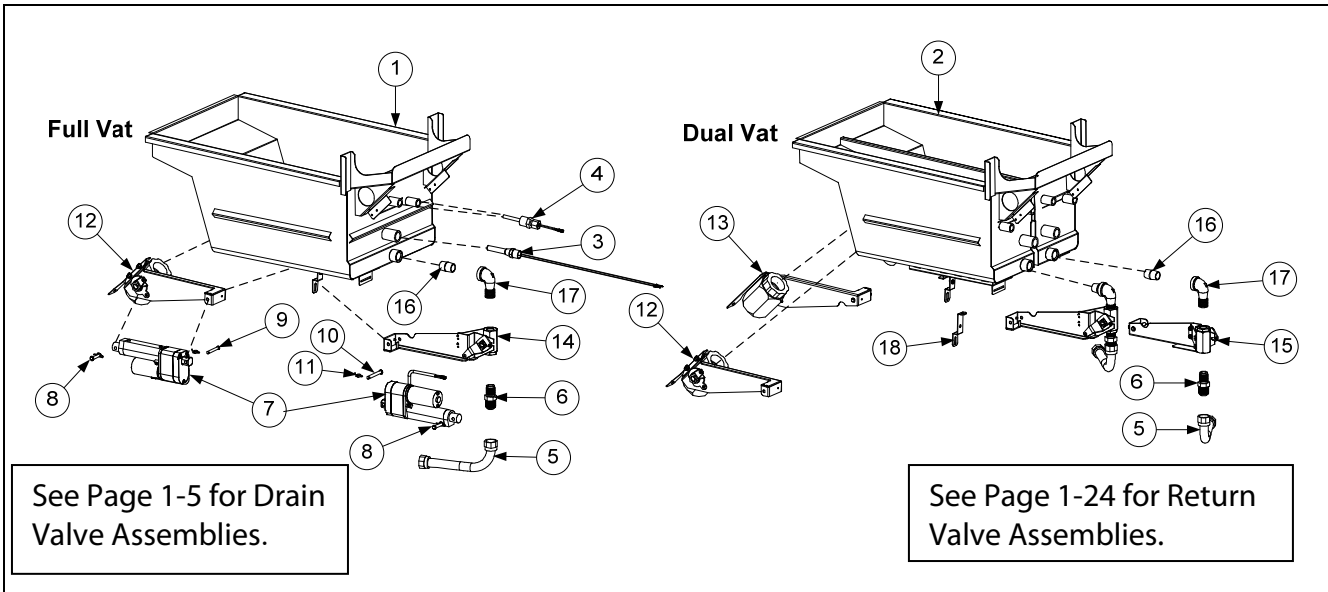
ITEM	PART #	COMPONENT
	1081305	Assembly, AIF
1	8241988	Cover, AIF Board
2	8160814	Gasket, AIF Board
3	8160815	Gasket, Computer Board
√ 4	1081304SP	Board, AIF
5	8160820	Seal, AIF Board
6	1080097	Panel Assembly, AIF Box

√ Recommended parts.

1.5.2.4 LOV PCB/Computer Board Matrix

PART #	COMPONENT
1082156	Assembly, MIB PCB w/ metal work
1081305	Assembly, AIF Board w/ metal frame
1081304SP	Board, AIF Board PCB w/ software
1081279	Board, ATO PCB w/ software
1081284SP	M3000 Non-CE Domestic <i>(For use in US, Canada, Mexico and all other non-CE countries)</i>
1081282	M3000 CE <i>(For use in European CE countries)</i>

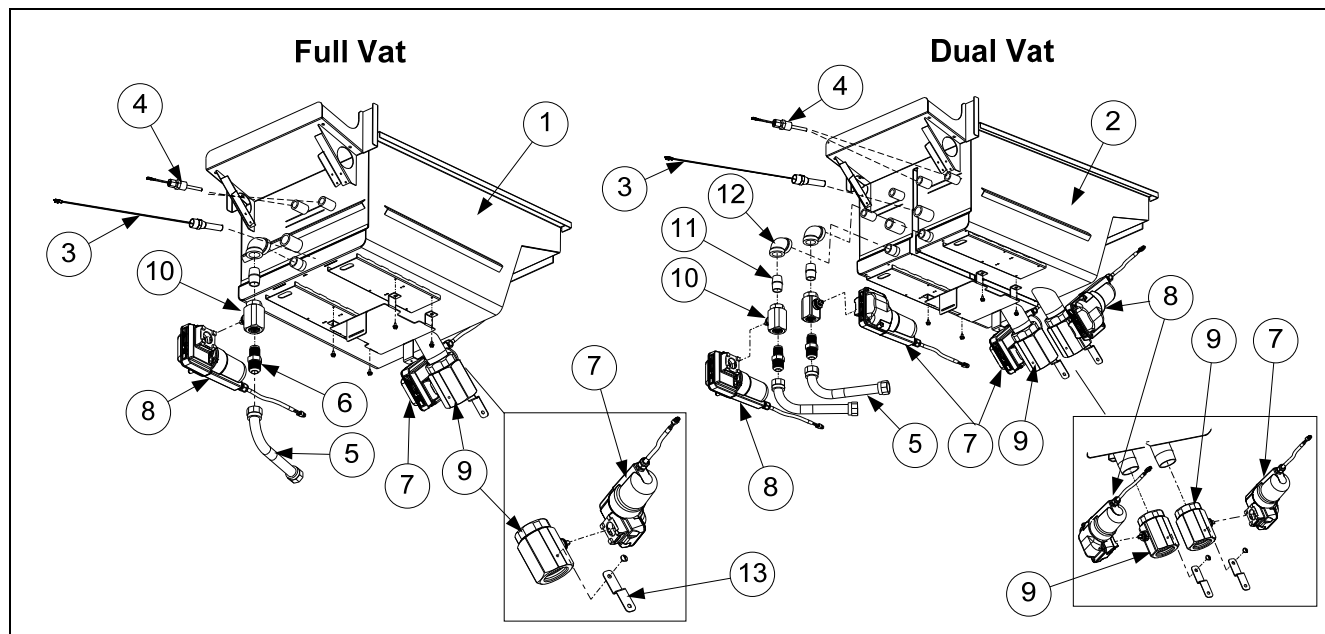
1.6 Frypot Assemblies and Associated Parts
1.6.1 Frypots with Linear Actuators (12/2008-12/2011)



ITEM	PART #	COMPONENT
1	8237436SP	Frypot, Full-Vat LOV™
2	8237437SP	Frypot, Dual-Vat LOV™
√ 3		Thermostat Assembly, High-Limit Long Standard
	8262454	Non-CE Full Vat 425°F (218°C) (17kW FV and 14kW FV) (Color Coded Black 806-7543)
	8262456	Non-CE Dual Vat 435°F (224°C) (22kW, 17kW DV and 14 kW DV) (Color Coded Red 806-8035)
	8262455	CE Full and Dual Vat 415°F (213°C) (14kW and 17kW CE) (Color-Coded Yellow 806-8132)
√ 4	8262706	Probe, Temperature and Fitting Kit AIF/RTD
5	8101067	Flexline, 5/8" OD x 8.50" Long
6	8101668	Adaptor, Male 5/8" OD x 1/2"
√ 7	8263295	Actuator, Linear AIF 24VDC Kit includes 8101776 (12/2008-12/2011)
8	8091012	Pin, Clevis, 1/4" x 1 1/4" (Drain and return valves)
9	8091035	Pin, Clevis, 1/4" x 2 1/4" (center pin drain actuator)
10	8091036	Pin, Clevis, 1/4" x 2" (center pin return actuator)
11	8101776	Clip, Toaster Ring
12	1080698SP	Valve, Drain Assy. LOV™ FV/DV Right viewed frm front of frypot (12/08-12/11)
13	1080697SP	Valve, Drain Assy LOV™ DV Left viewed frm front of frypot. (12/08-12/11)
14	1080700SP	Valve, Return Assy LOV™ FV/DV Right viewed frm front of frypot. (12/08-12/11)
15	1080699SP	Valve, Return Assy LOV™ DV Left viewed from front of frypot. (12/08-12/11)
16	8130022	Nipple, 1/2" x Close NPT BM
17	8130165	Elbow, St. 1/2" x 1/2" NPT 90°
18	2205960	Strap, Elec LOV™ Actuator

√ Recommended parts.

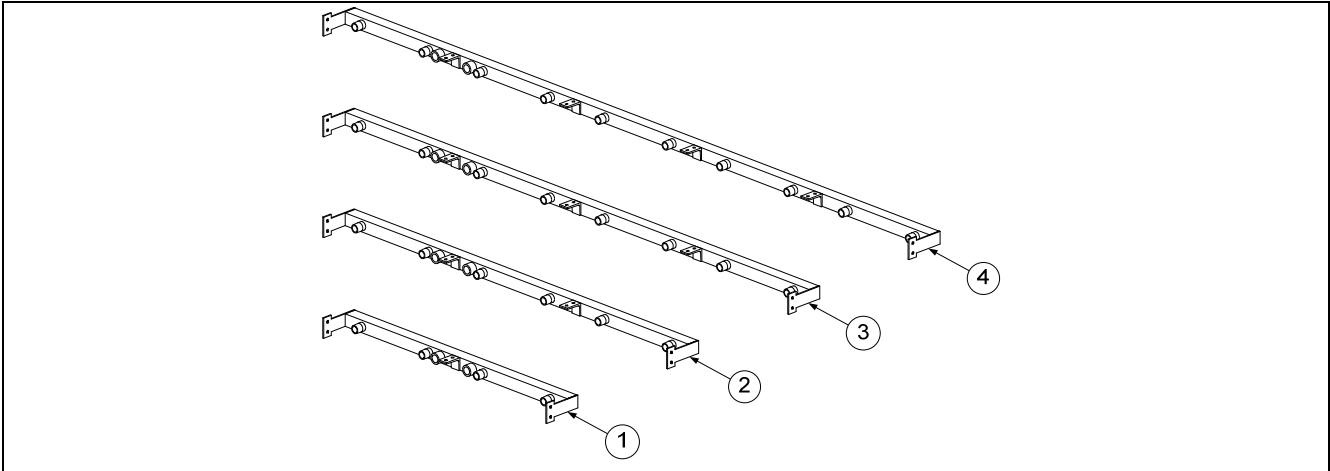
1.6.2 Frypots with Rotary Actuators (01/2012-Present)



ITEM	PART #	COMPONENT
1	8237672SP	Frypot, Full-Vat LOV™ prior to 07/2014
	8238958SP	Frypot, Full-Vat LOV™ after 06/2014
2	8237673SP	Frypot, Dual-Vat LOV™ (use 8237745 for Hybrid Fish Vat) prior to 07/2014
	8238959SP	Frypot, Dual-Vat LOV™ (use 8238960 for Hybrid Fish Vat) after 06/2014
√ 3		Thermostat Assembly, High-Limit Long Standard
	8262454	Non-CE Full Vat 425°F (218°C) (17kW FV and 14kW FV) (Color Coded Black 8067543)
	8262456	Non-CE Dual Vat 435°F (224°C) (22kW, 17kW DV and 14 kW DV) (Color Coded Red 8068035)
	8262455	CE Full and Dual Vat 415°F (213°C) (14kW and 17kW CE) (Color-Coded Yellow 8068132)
√ 4	8262706	Probe, Temperature and Fitting Kit AIF/RTD
5	8101067	Flexline, 5/8" OD x 8.50" Long
6	8101668	Adaptor, Male 5/8" OD x 1/2"
√ 7	8074961	Actuator, Rotary 24VDC (#1) Blue (01/2012-Present)
√ 8	8074962	Actuator, Rotary 24VDC (#2) Black (01/2012-Present)
√ 9	8103755	Valve, 1/4 Drain Rotary Actuator LOV™ (01/2012-Present)
√ 10	8103754	Valve, 1/2 NPT Return Rotary Actuator LOV™ (01/2012-Present)
11	8130022	Nipple, 1/2" x Close NPT BM
12	8130062	Elbow, 1/2" Blk 90°
13	2207386	Strap, Round Drain Elec LOV

√ Recommended parts.

1.7 Oil Return Manifolds

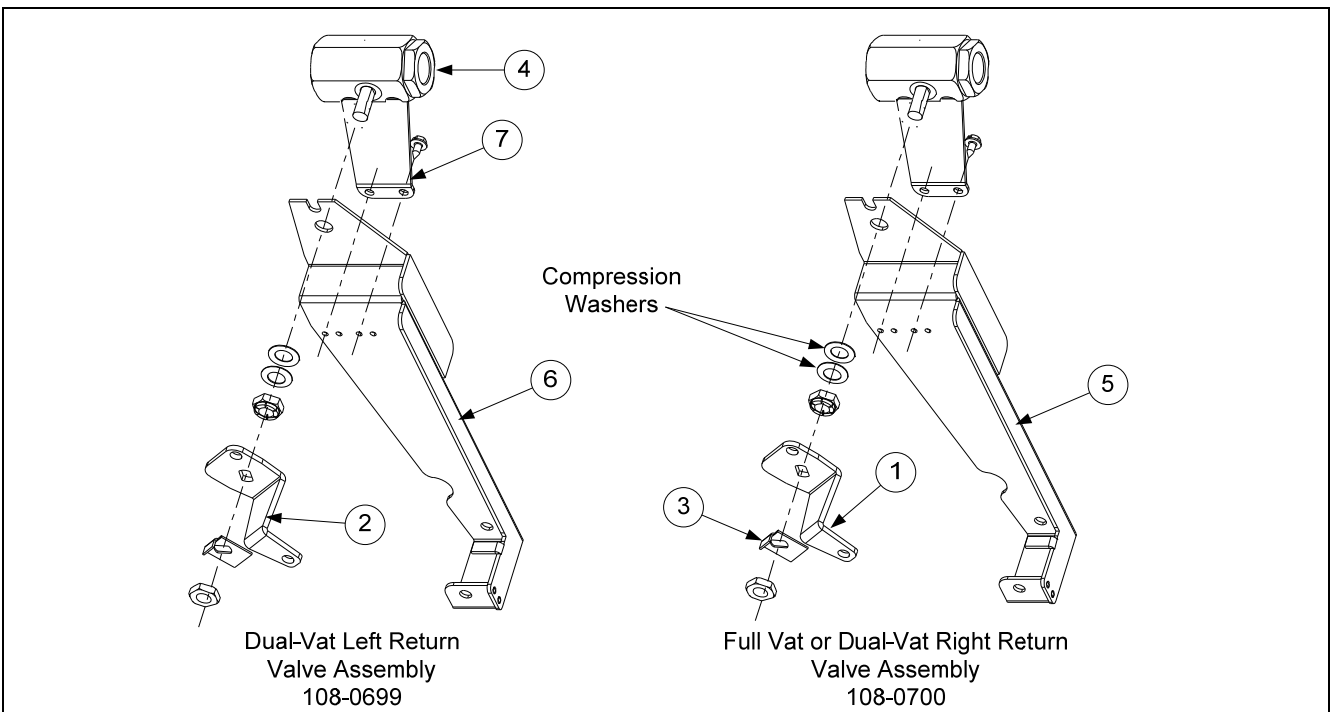


ITEM	PART #	COMPONENT
1	8103015	Manifold, Two-Station Fryer
2	8103016	Manifold, Three-Station Fryer
3	8103017	Manifold, Four-Station Fryer
4	8103018	Manifold, Five-Station Fryer
*	8130907	Cap, 15/16-inch Valve

* Not illustrated.

1.8 Return Valves and Associated Parts

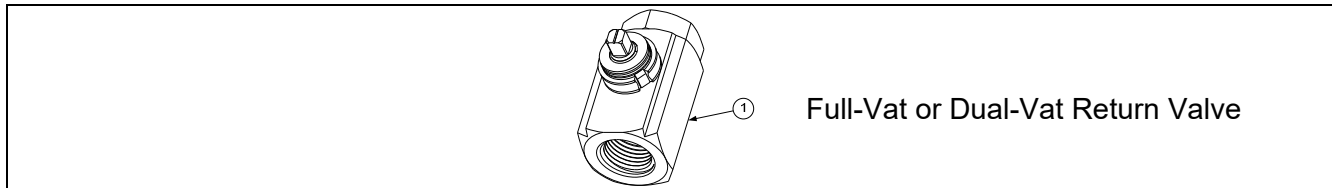
1.8.1 Return Valves and Associated Parts (Linear Actuators) (12/2008-12/2011)



1.8.1 Return Valves and Associated Parts (Linear Actuators) (12/2008-12/2011) cont.

ITEM	PART #	COMPONENT
1	2325702	Handle, Return Valve with Locator FV or DV Right
2	2315702	Handle, Return Valve with Locator DV Left
3	9002935	Retainer, Nut Oil Return Valve
4	8102201	Valve, ½-inch Ball (12/2008-12/2011)
5	8237233	Mount, Return Actuator Right
6	8237232	Mount, Return Actuator Left
7	2305963	Brace, Return Actuator Bracket

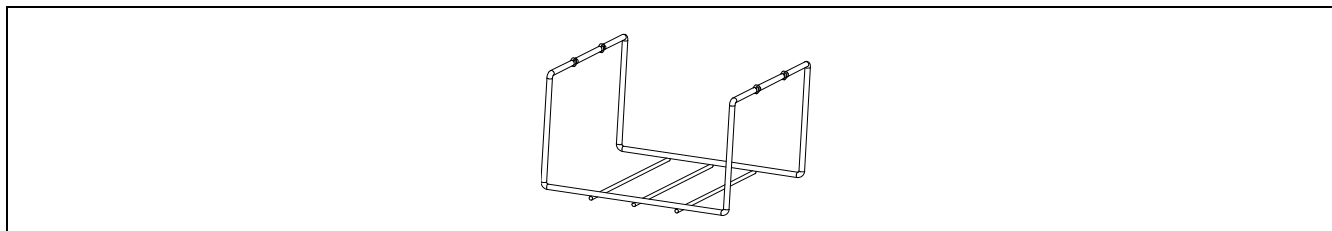
1.8.2 Return Valve (Rotary Actuators) (01/2012-Present)



ITEM	PART #	COMPONENT
1	8103754	Valve, ½-inch NPT Rotary Actuator

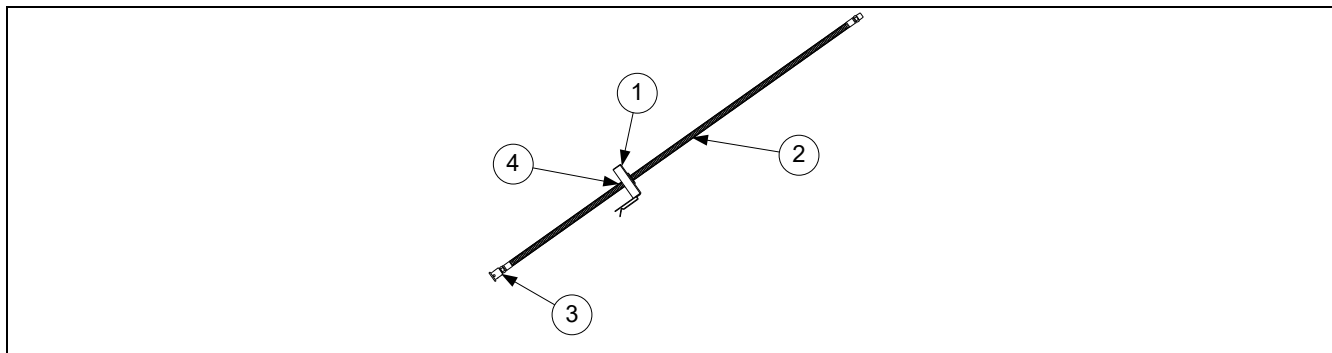
1.9 Auto Top Off Components

1.9.1 JIB Holder



ITEM	PART #	COMPONENT
1	2207991	Basket, JIB LOV™ prior to 12/2010 (use 2208363 after 01/2011)

1.9.2 JIB Cap and Pick Up Assembly

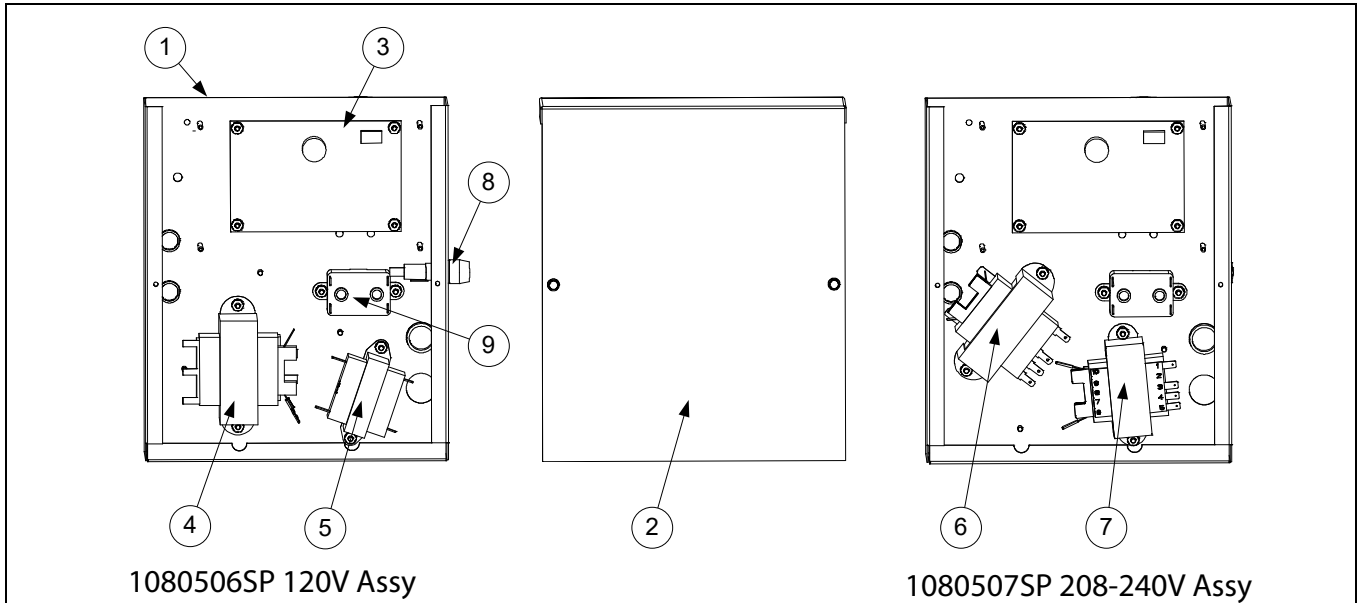


ITEM	PART #	COMPONENT
	1082005SP	Cap, JIB Assy (use 1087216SP Middle East) (use 1086927 Europe) (1081049SP Small Hose Assy) (Use 1087216SP France)
1	1082001SP	Cap, JIB (use 1069495SP for BIB [Europe])(use 8104715 Cap Middle East, France)

1.9.2 JIB Cap and Pick Up Assembly cont.

ITEM	PART #	COMPONENT
2	8103823	Hose, JIB (Use 8103663 France)
3	8237738	Tip Assy (Use 8103300 BIB Europe/Middle East, France)
4	8160870	Clamp (Use 8103664 Heyco Bushing Middle East)

1.9.3 Automatic Top Off Board Assembly



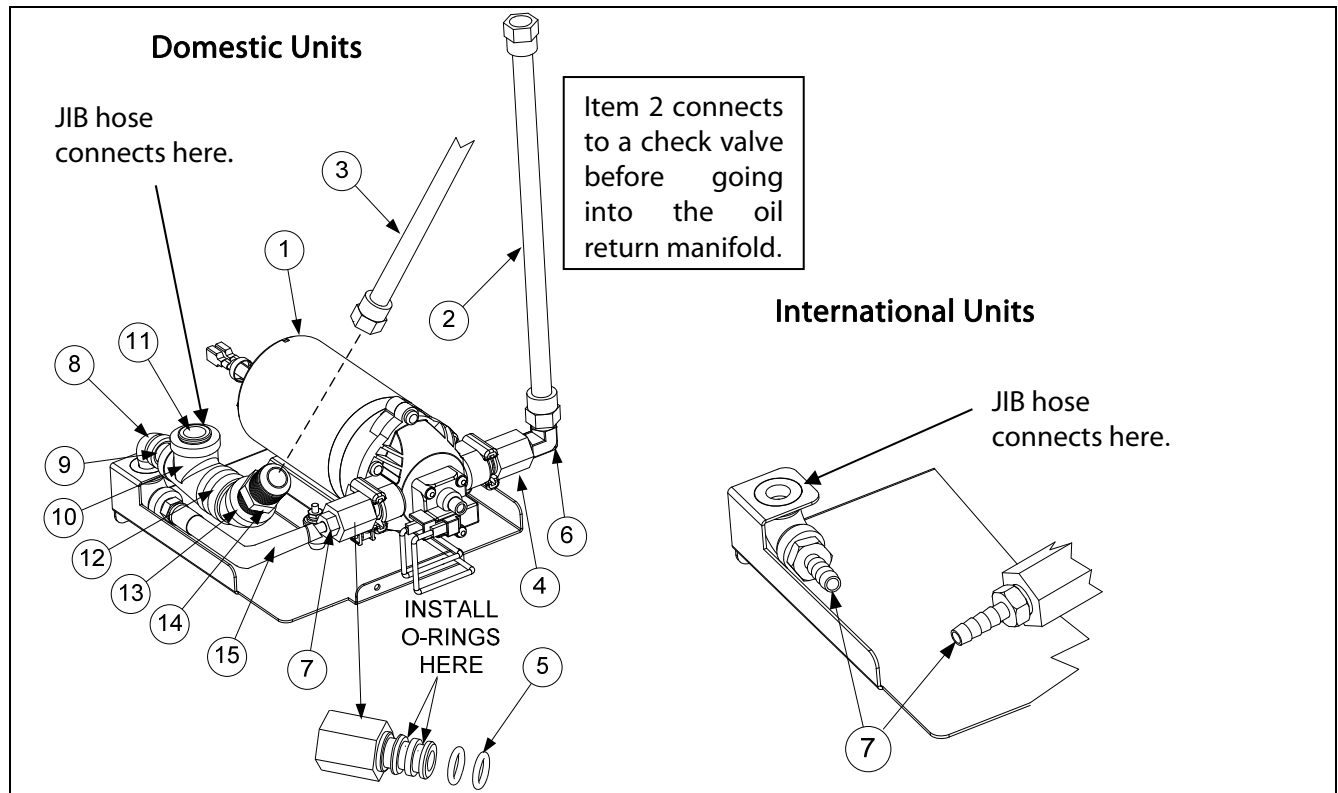
ITEM	PART #	COMPONENT
1	1080653	Box, Assembly Auto Top Off Board
2	2401650	Cover, Top Off Board Box
√ 3	1081279	PCB Board, Automatic Top Off
√ 4	8072181	Transformer, 100-120V/24V 62VA
√ 5	8070855	Transformer, 120V 50/60-12V 20VA
√ 6	8072180	Transformer, 208-240V/24V 50VA
√ 7	8072191	Transformer, 208/230/240 -12V 30VA
8	8071321	Holder, Fuse AGC Panel Mount ¼"
√ *	8071597	Fuse, 3A Slow-Blow
√ 9	8070012	Relay, 18AMP 1/3 HP 24V Coil (Top off pump)

* Not illustrated.

√ Recommended parts.

NOTE: Top off boxes for vats 4 and 5 have either item 4 or item 6, both have item 3.

1.9.4 ATO Pump Assembly

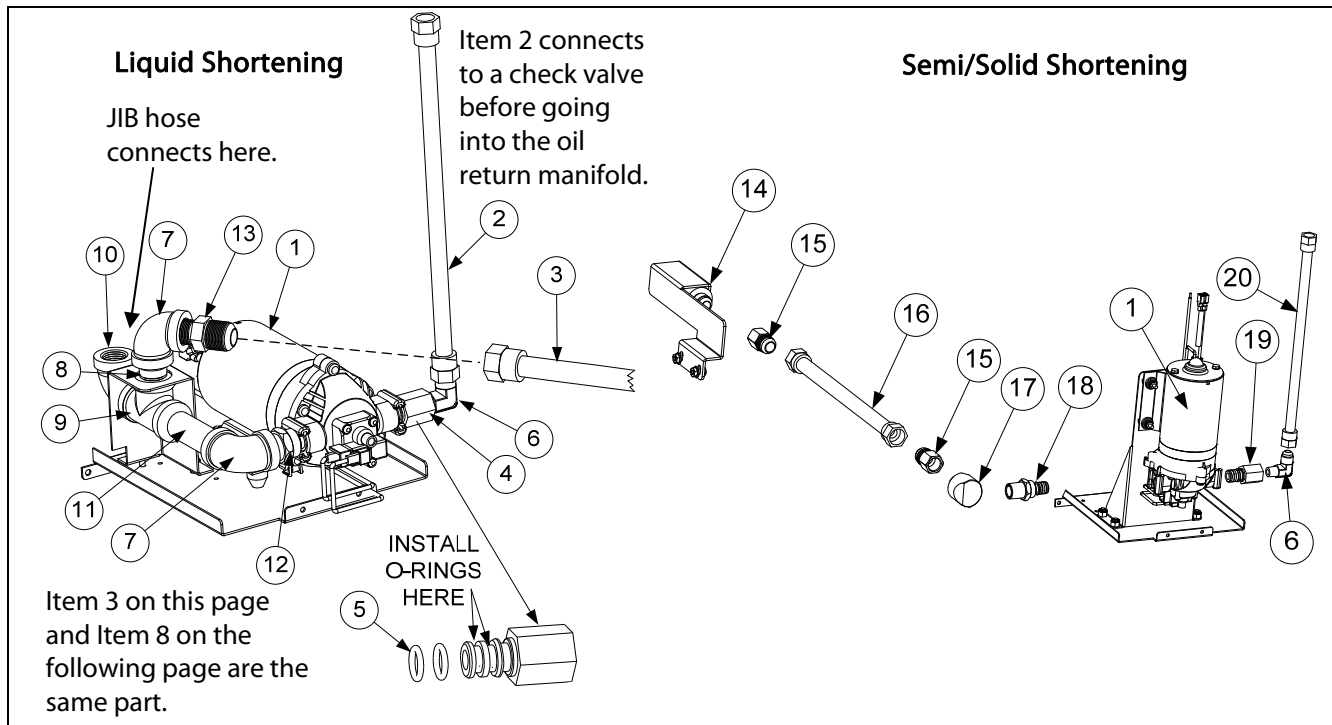


ITEM	PART #	COMPONENT
√ 1	1080639	Pump, Shurflo 24VAC
2	8103265	Flexline, 1/2" OD x 24-inch (Out to oil return manifold)
	8103591	Flexline, 1/2" OD x 8-inch (Out to oil return manifold two battery only)
*	8100667	Check valve, 1/2 NPT 1 PSI
3	8101069	Flexline, 5/8" OD x 29.5-inch (In from RTI fresh oil solenoid) Domestic units only
4	8103666	Fitting, Shurflow Pump
5	8160782	O-Ring, Viton #111
6	8130940	Elbow, 1/4" NPT x 3/8 Flare
7	8103770	Fitting, 1/4" NPT Male Barb
8	8130543	Elbow, 1/4" NPT BM
9	8130838	Nipple, 1/4" NPT BM Close
10	8130530	Tee, Reducing 1/2" x 1/4" x 1/2"
11	8130304	Bushing, 1/2" x 1/4" BM Flush
12	8130022	Nipple, 1/2" x Close NPY BM
13	8130345	Elbow, 1/2" BM 45°
14	8101668	Adaptor, Male 5/8" OD x 1/2"
15	8122083	Hose LOV Fryer JIB (Cut and attach to item 7 with a ty wrap)
*	8111166	Hose, Silicone Braided 18" (sold by the foot)

* Not illustrated.

√ Recommended parts.

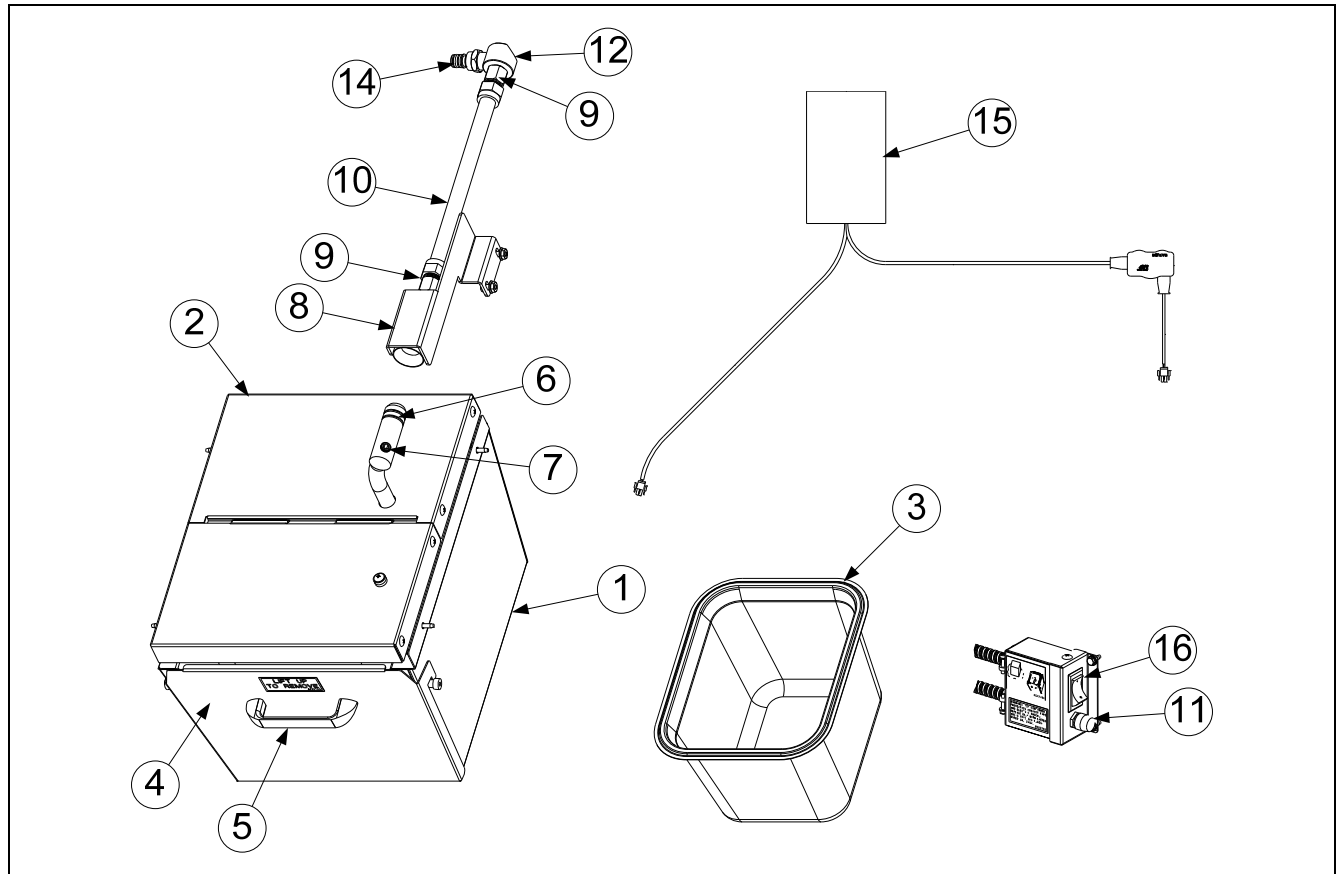
1.9.5 ATO Pump Assembly Service Kit (Larger Top Off Lines)



ITEM	PART #	COMPONENT
	8262896	Kit, Topoff Service Kit (JIB)
	8262897	Kit, Topoff Service Kit (BIB)
√ 1	1080639	Pump, Shurflo 24VAC
2	8103265	Flexline, ½" OD x 24-inch (Out to oil return manifold)
	8103591	Flexline, ½" OD x 8-inch (Out to oil return manifold two battery only)
*	8100667	Check valve, ½ NPT 1 PSI
3	8101069	Flexline, ⅝" OD x 29.5-inch (In from RTI fresh oil solenoid) Domestic units only
4	8103666	Fitting, Shurflow Pump
5	8160782	O-Ring, Viton #111
6	8130940	Elbow, ¼" NPT x ⅜ Flare
7	8130062	Elbow, ½" BLK 90° NPT BM
8	8130087	Nipple, ½" x 1.50-inch
9	8238063	JIB Connection Topoff Welded Assy.
10	8130165	Elbow, Street ½" x ½" NPT 90° BM
11	8130247	Nipple, ½" x 3.50-inch NPT BM
12	1082054SP	Fitting Assy Shurflow
13	8101668	Adaptor, Male ⅝" OD x ½"
14	8238079	Bracket, W/A Shortening Suction (In from Shortening Melting Unit)
15	8101669	Adaptor, Female ⅞" OD x ½"
16	8101055	Flexline, ⅝" OD x 11.5-inch
17	8130908	Adapter, ½" NPT 90°
18	8103820	Fitting, Quick Connect Shurflo
19	8103578	Fitting, LOV Shurflo Pump
20	8103375	Flexline, ½" OD x 17-inch (Out to oil return manifold)
*	8130907	Cap 15/16"

* Not illustrated. √ Recommended parts.

1.9.6 Shortening Melting Unit

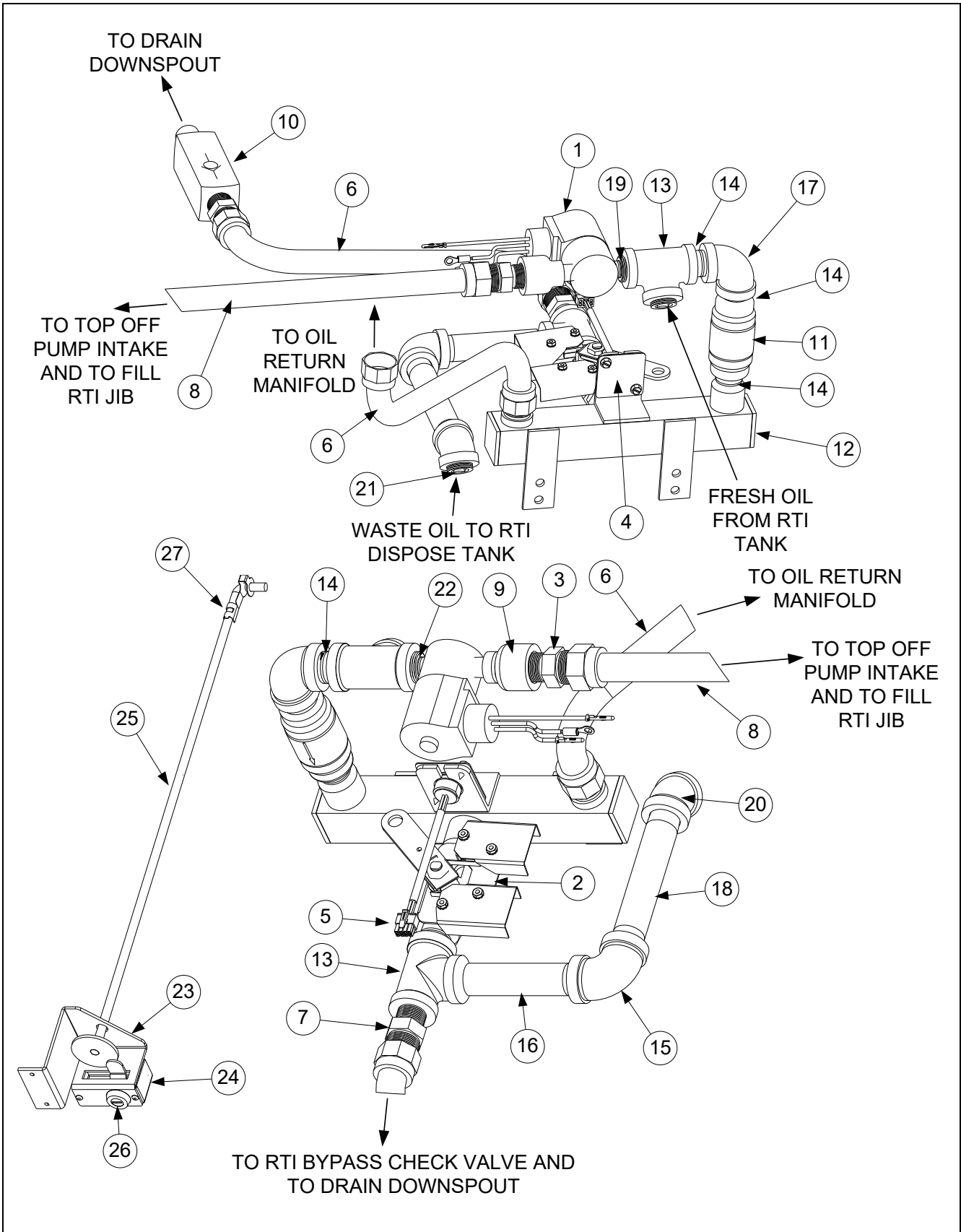


ITEM	PART #	COMPONENT
	1083406SP	Assembly, Heated Shortening
1	1082983	Box Assembly, Heated Shortening
2	1083001	Assembly, Heated Shortening Lid
3	8103957	Pan, Heated Shortening
4	1083372SP	Cover, Shortening Box Front
5	8100180	Handle
√ 6	8261392	O-Ring (Pkg. of 5)
7	8130568	Plug, 1/8-inch Socket Head Pipe
8	8238079	Bracket W/A, Shortening Suction 3 battery
	8238147	Bracket W/A, Shortening Suction 4 battery
9	8101669	Adaptor, Female 7/8" OD x 1/2"
10	8101055	Flexline, 5/8" OD x 11.5-inch
11	8071321	Holder, Fuse
√ *	8071555	Fuse 5 Amp
12	8130908	Adapter, 1/2" NPT 90°
13	8103820	Fitting, Quick Connect Shurflo Pump
√ 14	8160782	O-Ring, Viton #111
15	8075268	Strips, Hot Box Heater with controller
16	8074036	Switch
*	8071098	Heater Strip Assembly, 240V, 25W 18"
*	8071419	Heater Strip Assembly, 240V, 45W 36"
*	8071473	Heater Strip Assembly, 240V, 70W 56"

* Not illustrated. √ Recommended parts.

1.10 RTI

1.10.1 RTI Manifold and Accessories

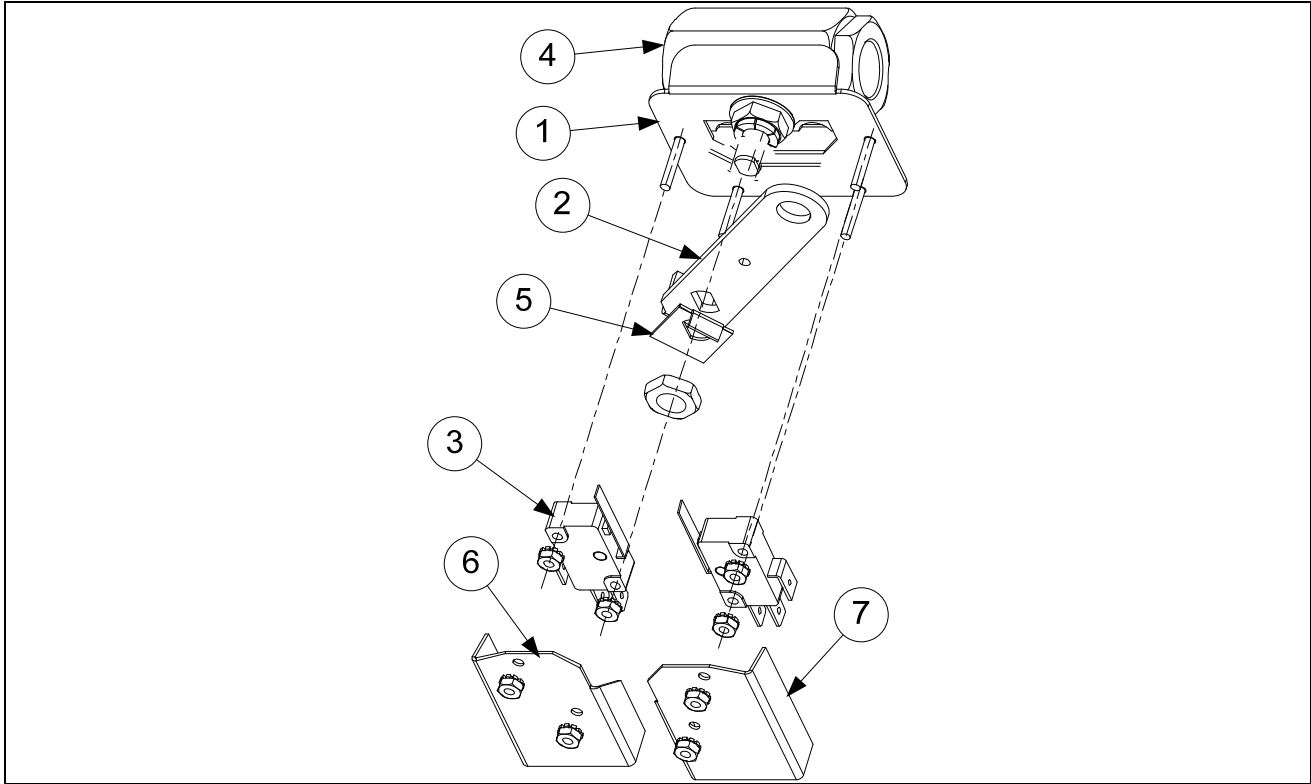


1.10.1 RTI Manifold and Accessories cont.

ITEM	PART #	COMPONENT
√ 1	1066830SP	Solenoid Assembly
2	1080446	Valve, RTI Waste Assembly (see page 1-32 for parts)
3	8101668	Adaptor, Male 5/8" OD x 1/2"
4	2205658	Cover, RTI Dust Plug
5	8074760	Harness, RTI – MIB connection
6	8101057	Flexline, 5/8" OD x 13-inch long
7	8101668	Adaptor, Male 5/8" OD x 1/2"
8	8101069	Flexline, 5/8" OD x 29.50-inch long
9	8130555	Reducer, Bell Fitting, 1/2" to 1/4" NPT BM
10	8103531	Valve, Check 20 PSI RTI bypass
11	8103583	Valve, Check 1/2" NPT 4 PSI RTI Manifold
12	8103596	Manifold, RTI
13	8130003	Tee, 1/2" x 1/2" x 1/2" BM
14	8103738	Adaptor, Check Valve Close Nipple
15	8130062	Elbow, 1/2" Blk 90°
16	8130093	Nipple, 1/2" x 4-inch
17	8130062	Elbow, 1/2" BM 90°
18	8130261	Nipple, 1/2" x 5-inch NPT
19	8130304	Bushing, 1/2" x 1/4"
20	8130345	Elbow, 1/2 Blk 45°
21	8130336	Plug, 1/2" NPT Square Head
22	8130838	Nipple, 1/4" NPT
	1080466SP	Handle and Lock Assy, Gas LOV™ RTI
23	2205656	Brace, RTI Handle
24	2205657	Cover, RTI Handle
25	8237142	Handle, RTI Waste Pull
26	8103587	Lock and Key, RTI Waste Handle
27	8090601	Clip, Clevis Left Rod End

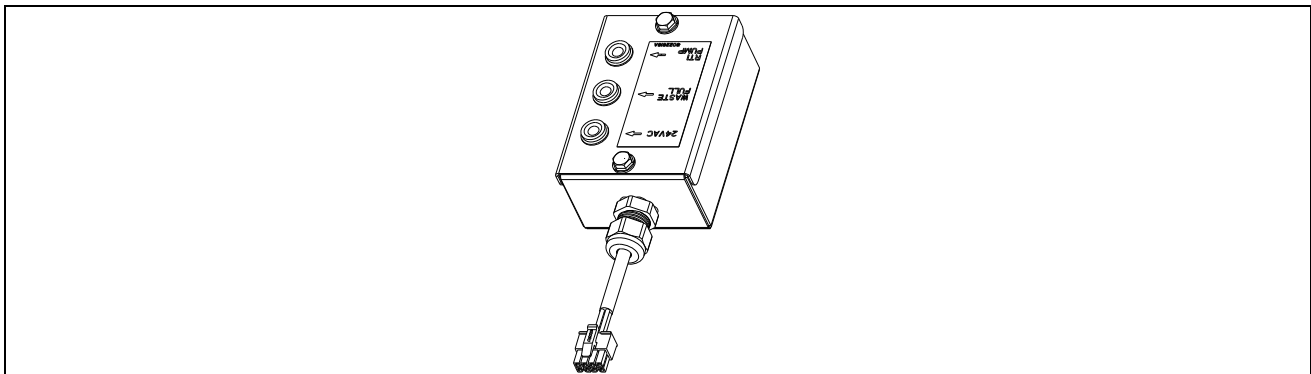
√ Recommended parts.

1.10.2 RTI Dispose Waste Valve



ITEM	PART #	COMPONENT
	1080446SP	Valve, RTI Dispose Waste
1	1080445	Bracket, RTI Waste Valve
2	2205615	Handle, RTI Waste Valve
3	8074936	Microswitch, Gold Sealed
4	8100278	Valve, 1/2" Ball
5	9002935	Retainer, Nut Return Valve
6	9012348	Cover, DV Safety Switch
7	9022348	Cover, DV Safety Switch

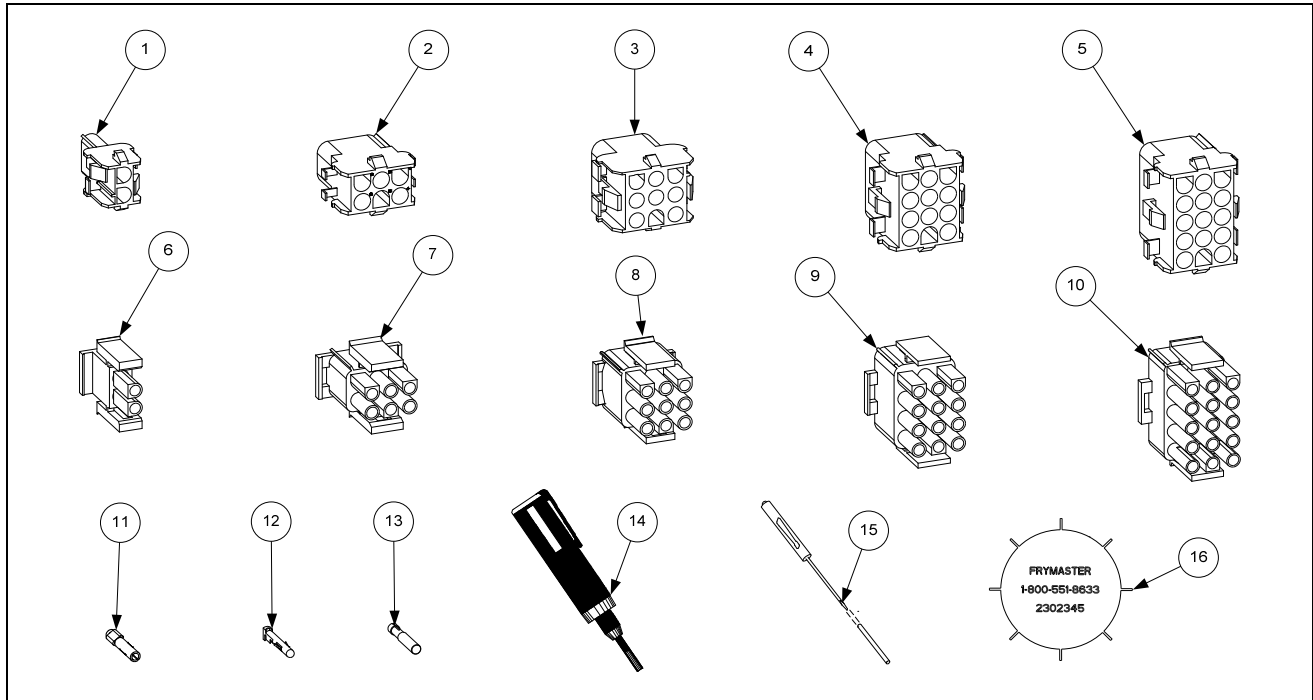
1.10.3 RTI Test Box



ITEM	PART #	COMPONENT
√	1080716SP	Box, LOV™ RTI Test

√ Recommended parts.

1.11 Wiring Connectors, Pin Terminals and Power Cords



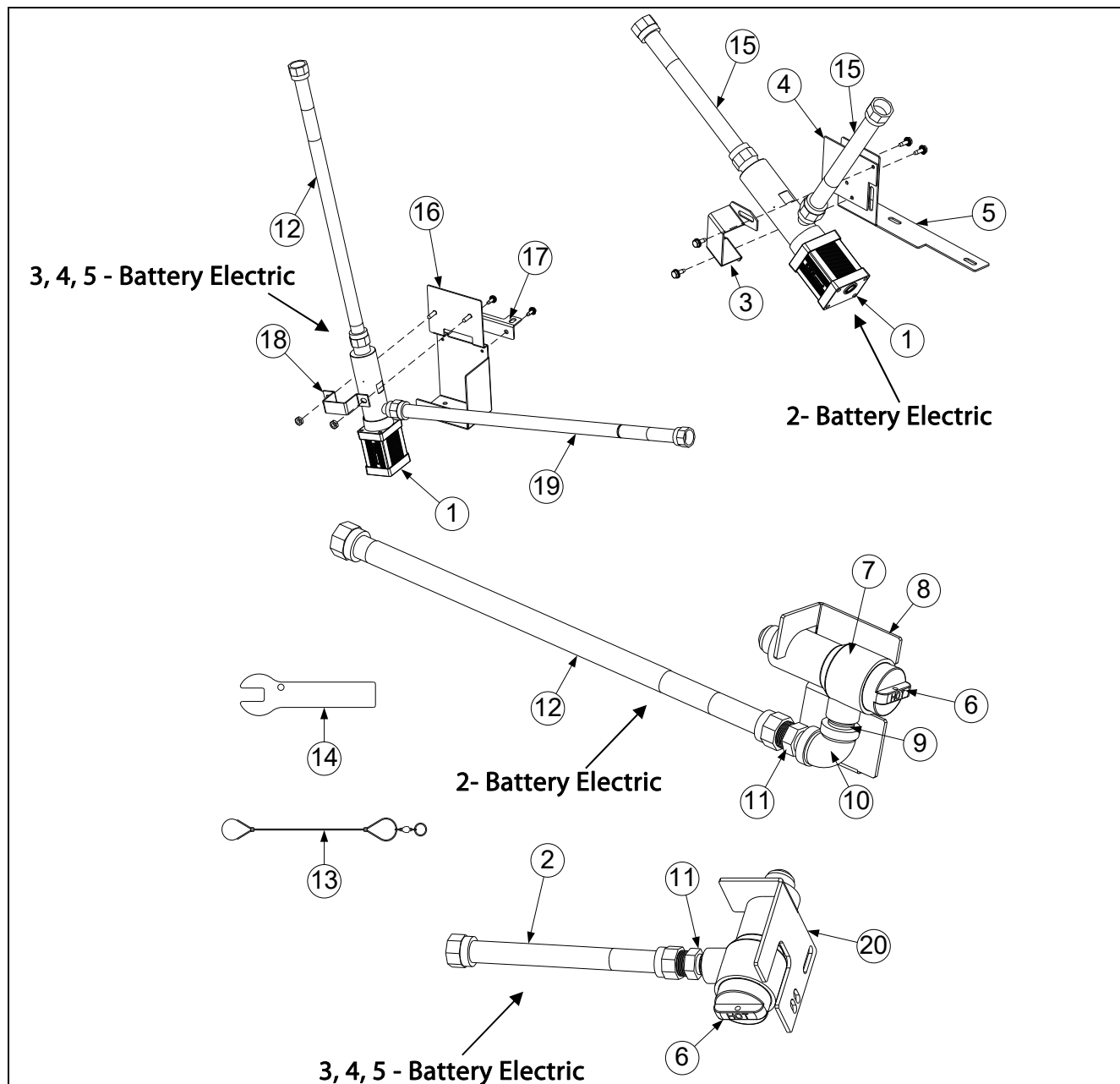
ITEM	PART #	COMPONENT
Power Cords		
*	8070154	100/120V–15A 3-wire, w/grounded plug
*	8074317	100/208/240V-16A 3-Wire with Plug LOV CE
*	8071685	100/208/240V–18A 3-wire, w/o plug
*	8074316	120V 5-wire, w/grounded plug LOV
*	8073817	208/240V 3-Phase 4-wire w/grounded plug
*	8075105	208/240V 3-Phase 4-wire w/grounded plug 105" CE 4 battery or larger
Connectors and Tools		
1	8071068	2-Pin Female
2	8070158	6-Pin Female
3	8070156	9-Pin Female
5	8070159	12-Pin Female
5	8070875	15-Pin Female
6	8071067	2-Pin Male
7	8070157	6-Pin Male
8	8070155	9-Pin Male
9	8070160	12-Pin Male
10	8070804	15-Pin Male
11	8261341	Terminal, Female Split Pin (Pkg of 25)
12	8261342	Terminal, Male Split Pin (Pkg of 25)
13	8072518	Plug, Mate-N-Lock (Dummy Pin)
14	8070928	Extract Tool Pin Pusher
15	8064855	Pin Pusher Screwdriver Assembly
16	2302345	SMT Pin Extractor
*	8074660PK	SMT Pin Service Repair Kit

* Not illustrated.

1.12 Fasteners

ITEM	PART #	COMPONENT
*	8090429	Bolt, ¼-inch – 20 x 2.00-inch Hex Head ZP Tap
*	8090131	Bolt, ¼-inch -20 x ¾-inch Hex
*	8091020	Cap Screw, 5/16-inch-18 5.50" NC Hex (<i>Connects pump to motor.</i>)
*	8090448	Clip, Tinnerman
*	8261366	Nut, 4-40 Keps Hex (Pkg. of 25) (8090237)
*	8261358	Nut, 6-32 Keps Hex (Pkg. of 25) (8090049)
*	8090247	Nut, 8-32 Keps Hex
*	8261376	Nut, 10-32 Keps Hex (Pkg. of 10) (8090256)
*	8090766	Nut, 10-32 Keps Hex SS
*	8090581	Nut, ½ NPT Locking
*	8090020	Nut Cap 10-24 NP
*	8261372	Nut Grip ¼-inch ¼-20 Hex NP (Pkg. of 10) (8090059)
*	8090417	Nut Flange ¼-inch ¼-20 Serr
*	8090535	Nut, "T" ¼-inch-20 x 7/16 SS
*	8090495	Nut, ¼-inch – 20 Press
*	8090540	Nut, Lock ½-inch-13 Hex 2-Way ZP
*	8261359	Screw, 4-40 x ¾-inch Slotted Round Head (Pkg. of 25) (8090354)
*	8261365	Screw, 6-32 x ⅜-inch Slot Head (Pkg. of 25) (8090095)
*	8090357	Screw, 6 x ⅜-inch Phillips Head NP
*	8090359	Screw, 8 x ¼-inch Hex Washer Head
*	8090360	Screw, 8 x ⅜-inch Hex Washer Slot Head
*	8261371	Screw, 8 x ½-inch Hex Head ZP (Pkg. of 25) (8090361)
*	8090364	Screw, 8 x ⅝-inch Hex Washer Head ZP
*	8090518	Screw, 8-32 x ⅜-inch Hex Washer Slotted Head SS
*	8090104	Screw, 8-32 x ½-inch Slotted Head ZP
*	8261363	Screw, 8-32 x ½-inch NP (Pkg. of 25) (809-0103)
*	8261360	Screw, 10-24 x 5/16-inch Round Slot Head ZP (Pkg. of 25) (8090024)
*	8261330	Screw, 10-32 x ⅜-inch Slot Head SS (Pkg. of 25) (8090117)
*	8091003	Screw, 10-32 x ⅜-inch Hex Trim Head SS
*	8090270	Screw, 10-32 x ½-inch Phillips Head ZP
*	8261375	Screw, 10-32 x ¾-inch Hex Trim Head SS (Pkg. of 5) (8090401)
*	8091000	Screw, 10-32 x 1¼-inch Hex Sck C/S
*	8261374	Screw, 10 x ½-inch Hex Head (Pkg. of 25) (8090412)
*	8090266	Screw, 10 x ½-inch Phillips Head ZP
*	8090434	Screw, 10 x ⅜-inch Hex Washer Head NP
*	8090123	Screw, 10 x ¾-inch Slot Head
*	8261389	Screw, 1/4-20 x ¾-inch Hex Head ZP (Pkg. of 10) (8090131)
*	8090582	Washer ½ NPT Locking
*	8090184	Washer, #10 LK ZP
*	8090190	Washer, .625 X .275 X 40 Flat SS
*	8090191	Washer, Lock ¼ Spring ZP
*	8090193	Washer, Flat ¼ Nylon
*	8090194	Washer, Flat 5/16 ZP

1.13 Oil Quality Sensor (OQS) and Associated Parts



ITEM	PART #	COMPONENT
	8263195	Kit, OQS LOV Elec 2-Battery (Kit for existing LOV Elec Fryers w/out OQS)
	8263193	Kit, OQS LOV Elec 3, 4 & 5 Battery (Kit for existing LOV Elec Fryers w/out OQS)
	8263267	Kit, OQS LOV Elec 3, 4 & 5 Battery (FRANCE ONLY) (Kit for existing LOV Elec Fryers w/out OQS)
1	8263292	Sensor, LOV OQS Replacement (Kit for LOV Fryers with OQS)
2	8101055	Flexline, 5/8" OD x 11.5-inch
3	2400931	Clamp, Bracket EBRO Sensor
4	2400930	Bracket, Vertical EBRO Sensor

1.13 Oil Quality Sensor (OQS) and Associated Parts cont.

ITEM	PART #	COMPONENT
5	2400929	Bracket, Horizontal EBRO Sensor
6	8238335	Screen, Suction Line Filter
7	8238929	Body W/A, Pre-Filter Final EBRO
8	2401094	Plate, Lower Pre-filter EBRO
9	8130022	Nipple, ½" x Close NPT BM
10	8130062	Elbow, ½" 90° BM
11	8101668	Adapter, ⅝" to ½" NPT Male
12	8101369	Flexline, ⅝" OD x 17.50-inch
13	8104167	Lanyard, In-Line Filter
14	2401086	Wrench, Pre-Filter Cap
15	8101067	Flexline, ⅝" OD x 8.5-inch
16	1086101	Bracket Assy, EBRO Sensor 3, 4 & 5 Battery
17	2401035	Support, EBRO Sensor Bracket
18	2400924	Strap, Bracket EBRO Sensor
19	8101400	Flexline, ⅝" OD x 21-inch
20	8238901	Body, W/A Pre-Filter EBRO Sensor
*	8238990	Wrench, 1-1/16" (27mm)
*	8238991	Wrench, 1-1/16" (27mm) crows foot

* Not illustrated.

THIS PAGE INTENTIONALLY LEFT BLANK

Frymaster[®]

FRYMASTER
8700 LINE AVENUE, SHREVEPORT, LA 71106-6800

800-551-8633
318-865-1711
WWW.FRYMASTER.COM
EMAIL: FRYSERVICE@WELBILT.COM



Welbilt offers fully-integrated kitchen systems. Welbilt's portfolio of award-winning brands includes Cleveland™, Convotherm®, Crystal Tips®, Dean®, Delfield®, Fabristeel®, Frymaster®, Garland®, Inducs®, Koldtech®, Kolpak®, Lincoln®, McCann's™, Merco®, Merrychef®, Multiplex®, RDI®, SerVend™, SunFire®, U.S. Range™, and WMaxx™. Supported by service brands: FitKitchen®, kitchen systems; and KitchenConnect®, cloud-based open platform.

Bringing innovation to the table • welbilt.com

©2023 Frymaster LLC. except where explicitly stated otherwise. All rights reserved. Continuing product improvement may necessitate change of specifications without notice.

Part Number FRY_P_8197260 10/2023