

Frymaster[®]

Your Growth Is Our Goal

BIELA14-T Series Gen III LOV[™] Electric Fryer



Parts Manual

This manual is updated as new information and models are released. Visit our website at www.frymaster.com for the latest manual.



FOR YOUR SAFETY

Do Not Store or use gasoline or other flammable vapors and liquids in the vicinity of this or any other appliance.



Part Number: FRY_P_8197342 10/2023

Original Instructions



NOTICE

IF, DURING THE WARRANTY PERIOD, THE CUSTOMER USES A PART FOR THIS FRYMASTER DEAN EQUIPMENT OTHER THAN AN **UNMODIFIED** NEW OR RECYCLED PART PURCHASED DIRECTLY FROM FRYMASTER DEAN, OR ANY OF ITS FACTORY AUTHORIZED SERVICERS, AND/OR THE PART BEING USED IS MODIFIED FROM ITS ORIGINAL CONFIGURATION, THIS WARRANTY WILL BE VOID. FURTHER, FRYMASTER DEAN AND ITS AFFILIATES WILL NOT BE LIABLE FOR ANY CLAIMS, DAMAGES OR EXPENSES INCURRED BY THE CUSTOMER WHICH ARISE DIRECTLY OR INDIRECTLY, IN WHOLE OR IN PART, DUE TO THE INSTALLATION OF ANY MODIFIED PART AND/OR PART RECEIVED FROM AN UNAUTHORIZED SERVICER.

NOTICE

This appliance is intended for professional use only and is to be operated by qualified personnel only. A Frymaster Authorized Servicer (FAS) or other qualified professional should perform installation, maintenance, and repairs. Installation, maintenance, or repairs by unqualified personnel may void the manufacturer's warranty.

Table of Contents

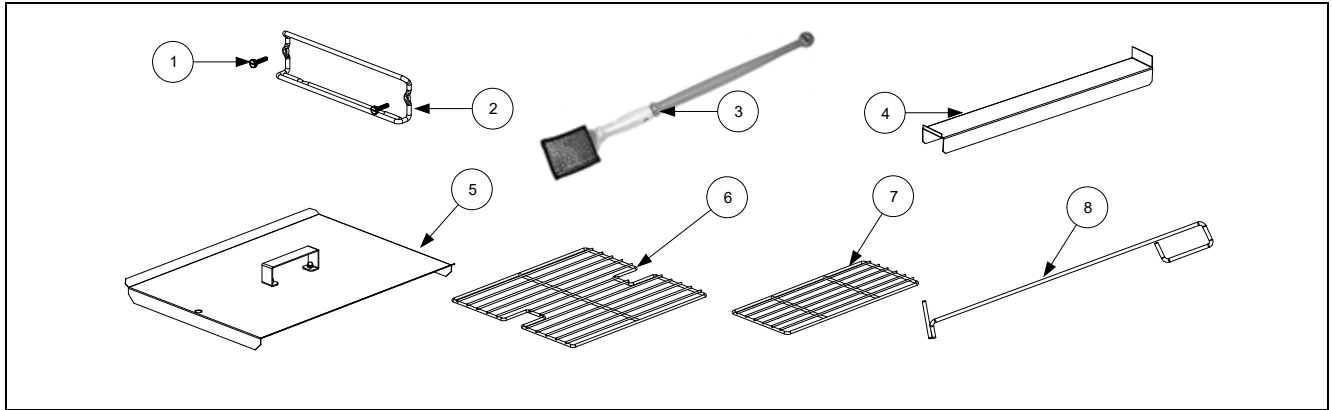
CHAPTER 1: Parts List

| | | |
|-------|---|------|
| 1.1 | Accessories..... | 1-1 |
| 1.2 | Control Panel Frame Assemblies..... | 1-1 |
| 1.3 | Doors, Sides, Tilt Housings, Cap-N-Splash, Top Caps and Casters..... | 1-2 |
| 1.4 | Drain System Components | 1-3 |
| 1.5 | Electronics and Electrical Components | 1-4 |
| 1.5.1 | Component Boxes and Associated Components | 1-4 |
| 1.5.2 | Contactor Boxes | 1-6 |
| 1.5.3 | Heating Element Assemblies and Associated Parts | 1-7 |
| | 1.5.3.1 Element Assemblies and Hardware..... | 1-7 |
| | 1.5.3.2 Element Tube Assemblies..... | 1-9 |
| 1.5.4 | FIB (Filtration Interface Board) Filter and Top Off Box Components | 1-10 |
| 1.5.5 | VIB (Valve Interface Board) Components | 1-11 |
| 1.5.6 | USB Connector | 1-11 |
| 1.5.7 | Wiring..... | 1-12 |
| | 1.5.7.1 Contactor Box Wiring Assemblies – 12-Pin Dual-Vat C-1..... | 1-12 |
| | 1.5.7.2 Contactor Box Wiring Assemblies – 12-Pin Full-Vat C-1 | 1-12 |
| | 1.5.7.3 Contactor Box Wiring Assembly – 6-Pin (Left Element)..... | 1-13 |
| | 1.5.7.4 Contactor Box Wiring Assembly – 9-Pin (Right Element)..... | 1-13 |
| | 1.5.7.5 Main Wiring Harnesses | 1-14 |
| | 1.5.7.6 Component Box Wiring Harnesses..... | 1-15 |
| | 1.5.7.7 FIB Box Wiring Harness | 1-16 |
| 1.6 | Frypot Assemblies and Associated Parts..... | 1-17 |
| 1.7 | Oil Return Manifolds..... | 1-18 |
| 1.8 | Filtration System Components | 1-19 |
| 1.9 | ATO (Auto Top Off) Components..... | 1-21 |
| | 1.9.1 JIB Cradle, JIB Cap and Pick-Up Assembly and JIB (ATO) Reset Switch | 1-21 |
| | 1.9.2 ATO Pump Assembly..... | 1-22 |
| 1.10 | Shortening Melting Unit | 1-23 |
| 1.11 | Bulk Dispose and Fresh Oil | 1-24 |
| | 1.11.1 Bulk Dispose and Fresh Oil Manifold and Accessories | 1-24 |
| | 1.11.2 Bulk Dispose Waste Valve..... | 1-26 |
| 1.12 | Oil Quality Sensor (OQS) and Associated Parts | 1-27 |
| 1.13 | Wiring Connectors, Pin Terminals and Power Cords | 1-28 |
| 1.14 | Fasteners | 1-29 |
| 1.15 | Itto Can /Front Dispose Components Japan only | 1-30 |

BIELA14-T SERIES GEN III LOV™ ELECTRIC FRYERS

CHAPTER 1: PARTS LIST

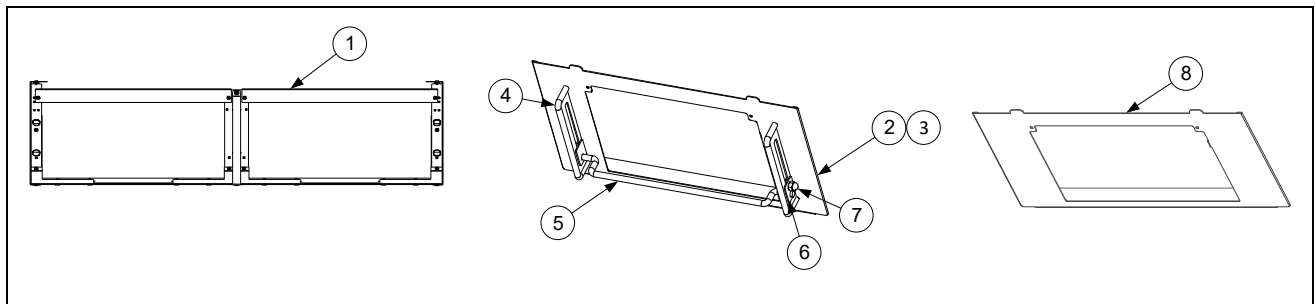
1.1 Accessories



| ITEM | PART # | COMPONENT |
|------|---------|--|
| 1 | 8090171 | Thumbscrew, ¼ -20 X 1¾-inch Universal Hood |
| | 8090402 | Thumbscrew, ¼ -20 X ½-inch Cap-N-Splash Hood |
| 2 | 8102793 | Hanger, Basket |
| * | 8090921 | Spacer, Basket Hanger |
| 3 | 8030430 | Brush, Frypot Ecolab |
| 4 | 8238963 | Connecting Strip, Frypot |
| 5 | 8238899 | Cover, Full-Vat Frypot |
| | 8238900 | Cover, Dual-Vat Frypot |
| 6 | 8030132 | Rack, Full-Vat Basket Support |
| 7 | 8030106 | Rack, Dual-Vat Basket Support |
| 8 | 8030388 | Element Lift / Fryers Friend LOV™ |

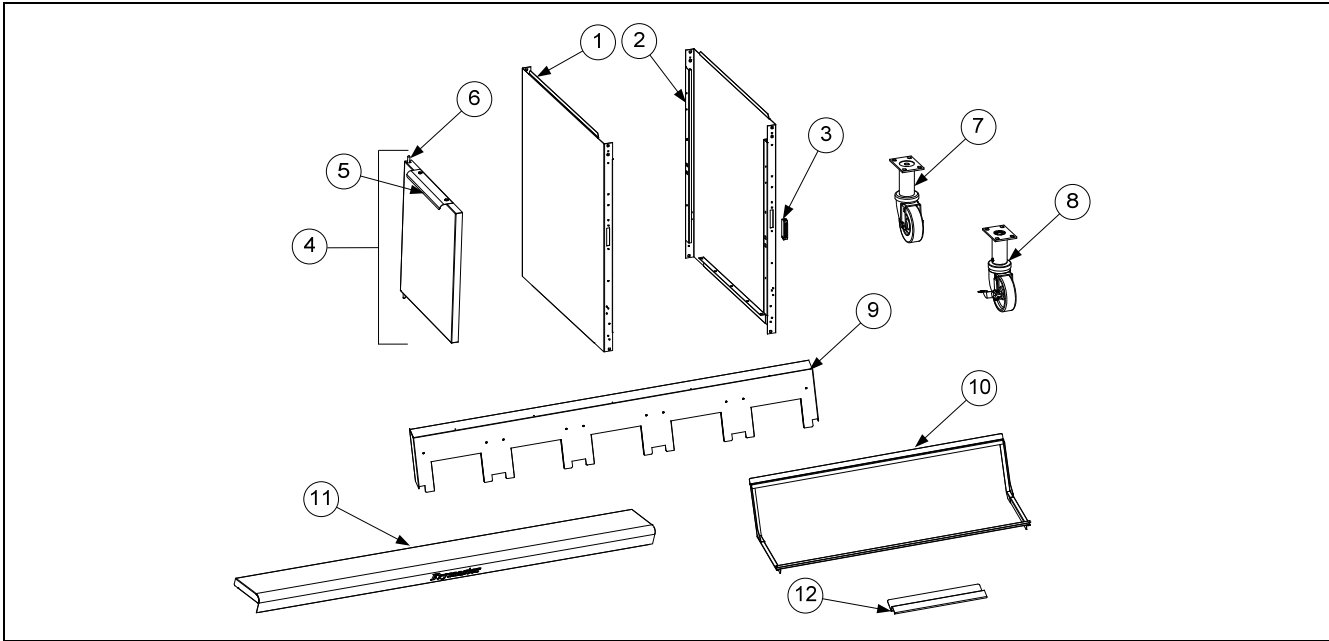
*Not illustrated.

1.2 Control Panel Frame Assemblies



| ITEM | PART # | COMPONENT |
|------|-----------|---|
| 1 | 1088340 | Frame Assembly, Control 2-Battery 10° (after 12/2018) |
| | 1087710 | Frame Assembly, Control 2-Battery (prior to 01/2019) |
| | 1087711 | Frame Assembly, Control 3-Battery (prior to 01/2019) |
| | 1088362 | Frame Assembly, Control 3-Battery 10° (after 12/2018) |
| | 1087712 | Frame Assembly, Control 4-Battery (prior to 01/2019) |
| | 1088359 | Frame Assembly, Control 4-Battery 10° (after 12/2018) |
| | 1088360 | Frame Assembly, Control 5-Battery 10° (after 12/2018) |
| 2 | 1087744 | Bezel Assembly, Control FQ4000 (prior to 04/2022) |
| 3 | 2602083 | Bezel, Single Touchscreen FQ |
| 4 | 8104898 | Guide, Controller Adjustable Guard |
| 5 | 8104899 | Bar, Guard (Touch Screen Protection) |
| 6 | 8104714 | Plate, Outside Tightening |
| 7 | 8090047 | Nut, Cap ¼-20 |
| 8 | 130000371 | Bezel Assembly, Control FQ4000 (after to 03/2022) |

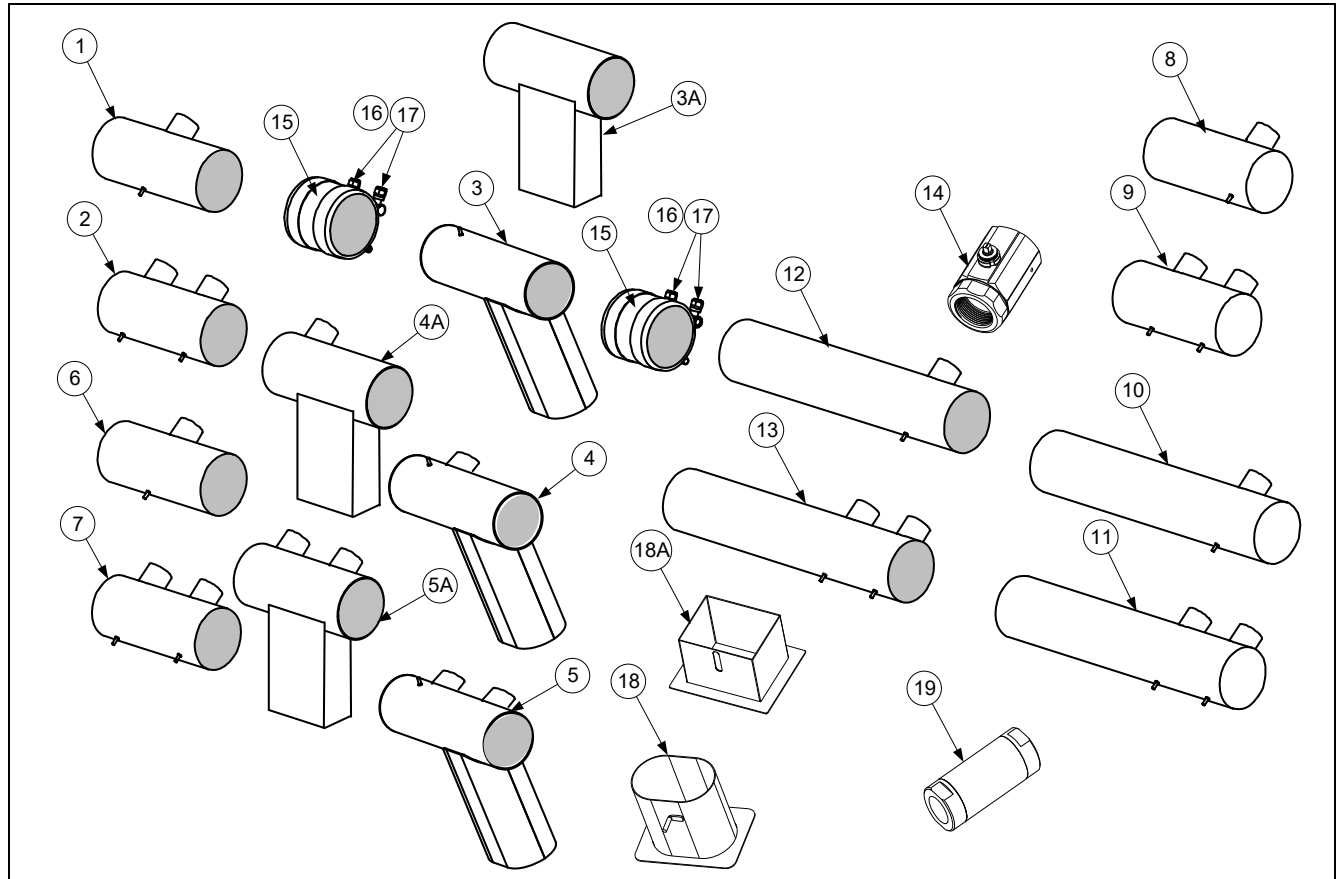
1.3 Doors, Sides, Tilt Housings, Cap-N-Splash, Top Caps and Casters



| ITEM | PART # | COMPONENT |
|------|-----------|--|
| 1 | 130000552 | Side, Cabinet Left (after to 02/2022) |
| | 2310323 | Side, Cabinet Left (prior to 03/2022) |
| 2 | 130000553 | Side, Cabinet Right (after to 02/2022) |
| | 2320323 | Side, Cabinet Right (prior to 03/2022) |
| 3 | 8101105 | Magnet, Door |
| 4 | 1080915 | Door, Left or Right (Left shown - move handle to bottom for right) |
| 5 | 2304960 | Handle, Eurolook Door |
| 6 | 1064067SP | Pin Assembly, Door |
| * | 8100275 | Spring, Door Pin |
| * | 8100658 | Retaining Ring |
| * | 2307192 | Hinge, Door Lower |
| * | 2206097 | Holder, Manual |
| 7 | 8100327 | Caster without Brake |
| 8 | 8100326 | Caster with Brake |
| 9 | | Tilt Housing (Housing for five station fryer shown) |
| | 8236085 | Two Station, S/S (Use 9102441 for Hood Strip) |
| | 8235700 | Three Station, S/S (Use 9102440 for Hood Strip) |
| | 8236151 | Four Station, S/S (Use 9102439 for Hood Strip) |
| | 8236243 | Five Station, S/S (Use 9109447 for Hood Strip) |
| 10 | | Cap-N-Splash Assemblies |
| | 8239151 | Two Station Fryer |
| | 8239152 | Three Station Fryer |
| | 8239153 | Four Station Fryer |
| | - | Five Station Fryer |
| 11 | | Top Cap (Top cap for five station fryer shown) |
| | 1087416SP | Two Station Fryer (Req 4- 8090078 10-32 Nutserts) |
| | 1087417SP | Three Station Fryer (Req 4- 8090078 10-32 Nutserts) |
| | 1087418SP | Four Station Fryer (Req 4- 8090078 10-32 Nutserts) |
| | 1087419SP | Five Station Fryer (Req 4- 8090078 10-32 Nutserts) |
| 12 | 2601128 | Guard, Cap/Splash Wave |

* Not illustrated.

1.4 Drain System Components

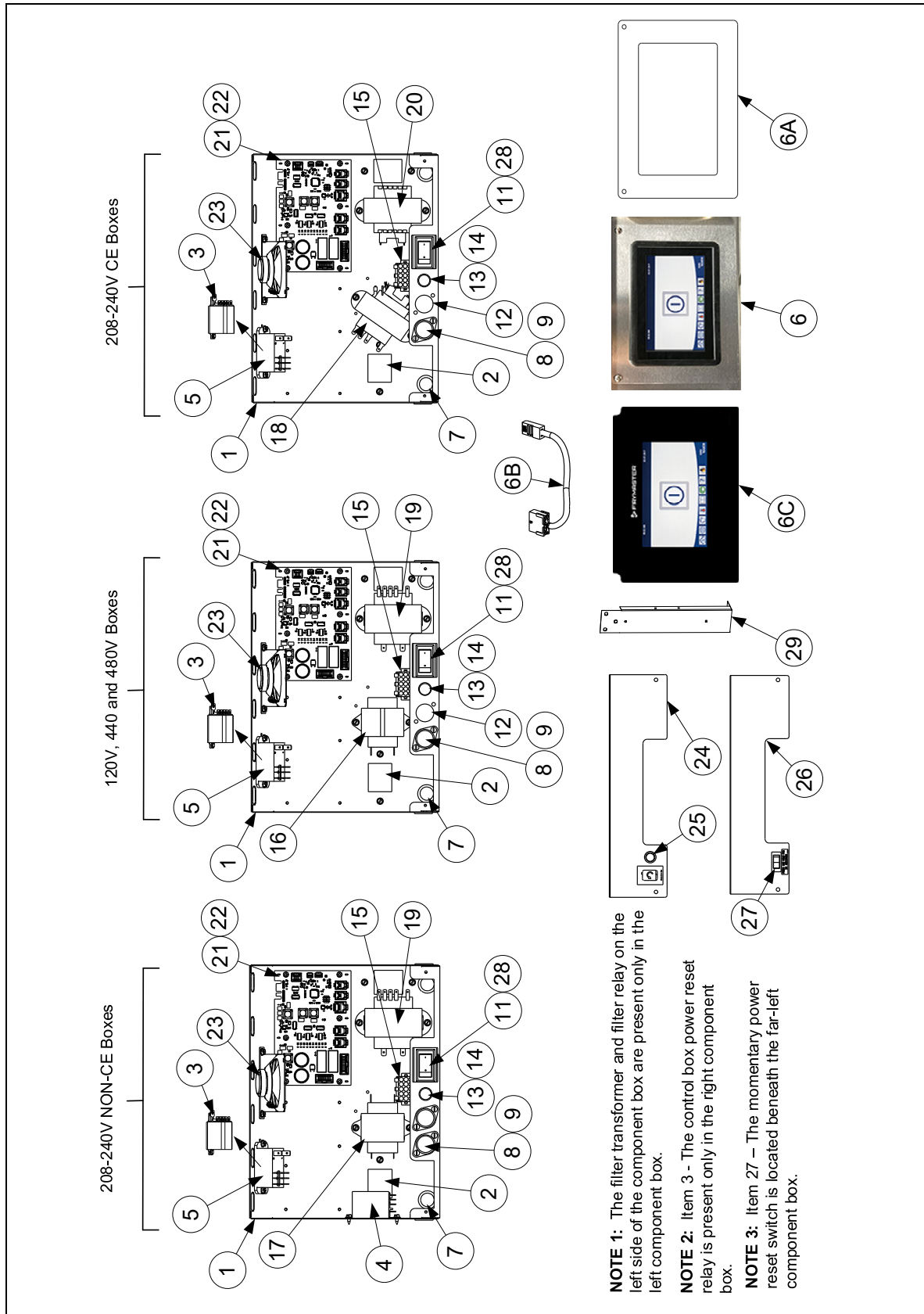


| ITEM | PART # | COMPONENT |
|------|-----------|--|
| 1 | 8236020 | Drain Tube, Full-Vat Left Closed/Right End Open |
| 2 | 8236112 | Drain Tube, Dual-Vat Left Closed/Right End Open |
| 3 | 1085842 | Drain Tube, Dump (Use 1081882 for French Unit) (Oval) |
| 3A | 130000624 | Drain Tube, Dump (Square) |
| 4 | 1085806 | Drain Tube, Dump Full-Vat 2 Bat. Dump Left Closed/Right End Open (Oval) |
| 4A | 130033447 | Drain Tube, Dump Full-Vat 2 Bat. Dump Left Closed/Right End Open (Square) |
| 5 | 1085854 | Drain Tube, Dump Dual-Vat 2 Bat. Dump Left Closed/Right End Open (Oval) |
| 5A | 130000620 | Drain Tube, Dump Dual-Vat 2 Bat. Dump Left Closed/Right End Open (Square) |
| 6 | 8236019 | Drain Tube, Full-Vat Left and Right Open |
| 7 | 8236021 | Drain Tube, Dual-Vat Left and Right Open |
| 8 | 8236240 | Drain Tube, Full-Vat 2 Bat. Left Open/Right End Closed |
| 9 | 8236242 | Drain Tube, Dual-Vat 2 Bat. Left Open/Right End Closed |
| 10 | 8236202 | Drain Tube, Full-Vat Left Open/Right End Closed |
| 11 | 8236114 | Drain Tube, Dual-Vat Left Open/Right End Closed |
| 12 | 8236117 | Drain Tube, Full-Vat Left and Right Open |
| 13 | 8236115 | Drain Tube, Dual-Vat Left and Right Open |
| 14 | 8104353 | Valve, 1¼-inch NPT Rotary Actuator |
| 15 | 8160772 | Sleeve |
| 16 | 8090969 | Clamp 3.00" T-Bolt |
| 17 | 8160665 | Vinyl Cap .218 x 500 |
| 18 | 8237685 | Guard, Pan Splash Lid Oval (3/4/5 Vat Fryers) |
| | 8237915 | Guard, Pan Splash Lid Oval (2-Vat Fryer) |
| 18A | 130033732 | Guard, Pan Lid Splash (Square) |
| 19 | 8105084 | Valve, Check 20 PSI RTI bypass |

* Not illustrated.

1.5 Electronics and Electrical Components

1.5.1 Component Boxes and Associated Components



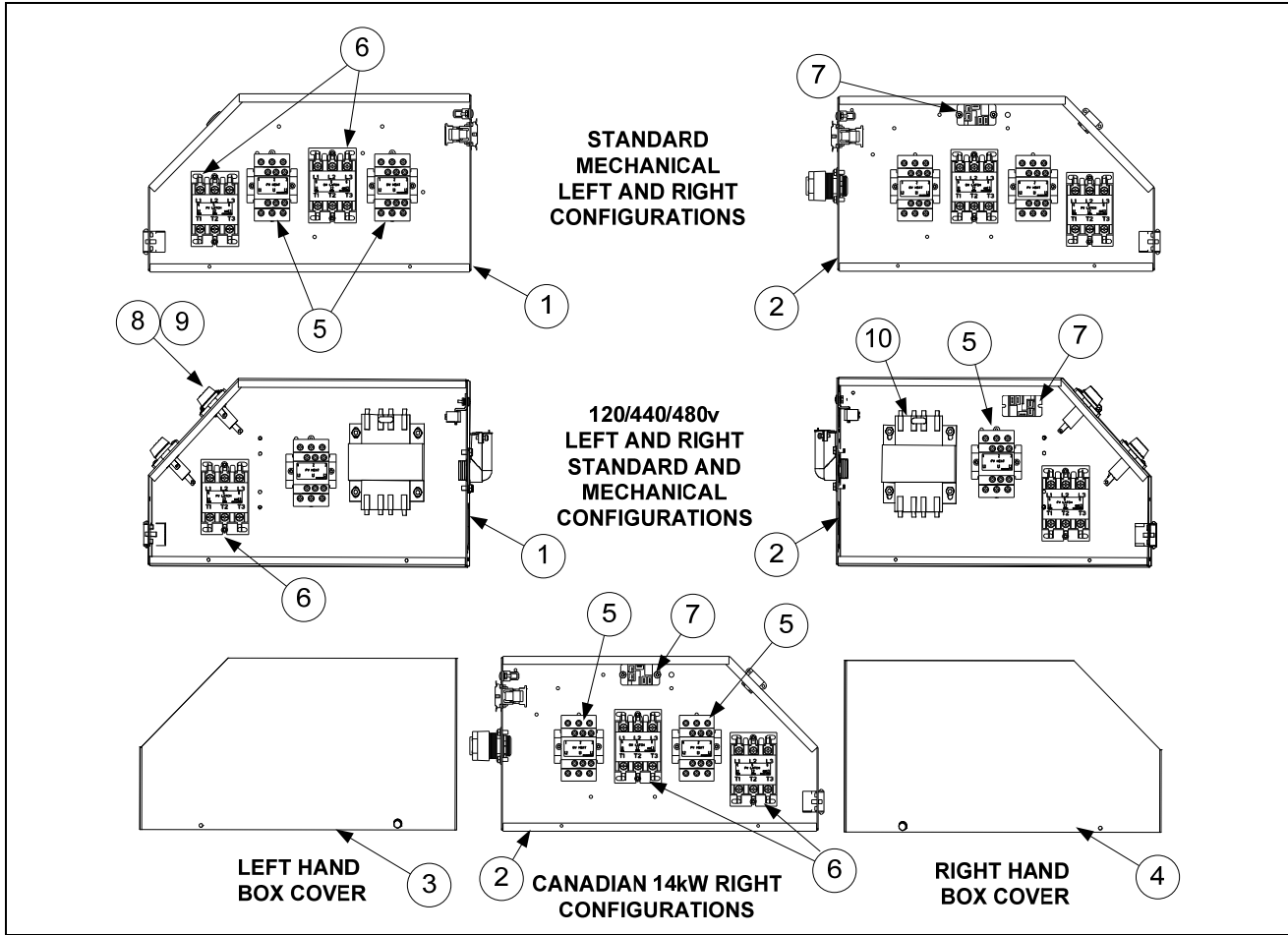
1.5.1 Component Boxes cont.

| ITEM | PART # | COMPONENT |
|------|-----------|--|
| 1 | 1087745 | Box Assembly, Component |
| 2 | 2200833 | Plate, Component Box Strain Relief |
| √ 3 | 8074346 | Relay, DPDT 20A 120V <i>(used for control power reset in right hand boxes only in domestic and Canadian units)</i> |
| | 8074770 | Relay, DPDT 20A 240V <i>(resets control power; right hand boxes only in international units; one in each control box in some units.)</i> |
| √ 4 | 8074346 | Relay, 120V DPDT 20A <i>(used in Canadian models only)</i> |
| √ 5 | 8074482 | Relay, Filter 2 Pole 30A DPDT 24VDC |
| √ 6 | 8263748 | Controller, Common UI Kit <i>(for fryers manufactured from 04/2022 to present)</i> |
| 6A | 130000329 | Bezel, Common UI <i>(Metal Bezel only)</i> |
| 6B | 8076596 | 4000 Xfer Cable <i>(Connects Common UI Controller to SIB Board)</i> |
| √ 6C | 1086730SP | Controller, M4000 Domestic USA <i>(for fryers manufactured prior to 04/2022)</i> |
| | 1088437SP | Controller, M4000 International CE <i>(for fryers manufactured prior to 04/2022)</i> |
| | 8263658 | Controller, M4000 Japan <i>(for fryers manufactured prior to 04/2022)</i> |
| | 1088467SP | Controller, M4000 Israel <i>(for fryers manufactured prior to 04/2022)</i> |
| * | 8104320 | Lanyard, Controller Restraint |
| 7 | 8100045 | Bushing, .875 Diameter 11/16" |
| 8 | 8070922 | Holder, Buss Fuse HPS Screw Type |
| 9 | 8072278 | Fuse, 20 Amp |
| 10 | 8102446 | Plug, Button .50 Heyco Double "D" |
| √ 11 | 8074036 | Switch, Power |
| | 8073575 | Plug, Carling Switch Hole <i>(used on some models without a switch)</i> |
| 12 | 8071947 | Plug, Button .875 Dome |
| 13 | 8071321 | Holder, Fuse <i>(Some models use item 10 here.)</i> |
| 14 | 8075570 | Fuse, 3.5 AMP 250V Fast Acting |
| 15 | 8075951 | Harness, Elec Full Vat Controls SIB J1 to Components |
| | 8075952 | Harness, Elec Dual Vat Controls SIB J1 to Components |
| √ 16 | 8070800 | Transformer, 120V/24V 50VA Filter |
| √ 17 | 8070680 | Transformer, 208/240V/24V 43VA Filter (Non-CE) |
| √ 18 | 8072180 | Transformer, 208-240V/24V 50VA Filter (CE, Australia & Korea) |
| √ 19 | 8075362 | Transformer, 115-240V/24V 80VA |
| √ 20 | 8071022 | Transformer, 208/240V/24V 75VA (CE, Australia & Korea) |
| √ 21 | 1085979 | Board, Interface SIB (Smart Interface Board) |
| 22 | 8090349 | Spacer, 4mm X 6mm Aluminium |
| 23 | 8075829 | Speaker, 4 ohms |
| 24 | 2401735 | Guard, Finger JIB Reset |
| 25 | 8074678 | Switch, Momentary JIB Reset <i>(resets ATO; located above JIB/BIB)</i> |
| 26 | 2401734 | Guard Elec. with reset |
| 27 | 8072659 | Switch, Momentary <i>(resets control power; located below left component box)</i> |
| 28 | 2305038 | Guard, RE Box Switch |
| 29 | 2006654 | Brace, Component Box |
| | | See Wiring Diagrams in BIELA14-T Wiring Diagrams Manual for cable locations |
| * | 8075553 | Cable, P-Bus Left SIB to Right SIB |
| * | 8075555 | Cable, P-Bus w/ power Right SIB to VIB (Valve Interface Board) |
| * | 8075551 | Cable, C-Bus Right SIB to FIB (Filtration Interface Board) |
| * | 8075549 | Cable, C-Bus Right SIB to Right SIB (Connects component boxes together) |
| * | 8076106 | Adapter, RJ11 CAN SIB (J8) to Legacy 6-pin (Micro Mate/Lock) CAN (OQS sensor to SIB 5") |
| * | 8074552 | Terminator, CAN (ONLY used on OQS harness Y- adaptor) |
| √ * | 8075632 | Terminator, CAN End Communication RJ11 (used in SIB J8 if OQS is NOT installed) |

* Not illustrated.

√ Recommended parts.

1.5.2 Contactor Boxes



NOTES: Left and right contactor box assemblies are mirror images of one another. With the exception of the box itself, all components of a left-hand assembly are the same as those in the corresponding right-hand assembly and vice versa except for the hood relay which occurs in the right or large box only. The configurations illustrated show all possible components, but a configuration may not have all the components shown.

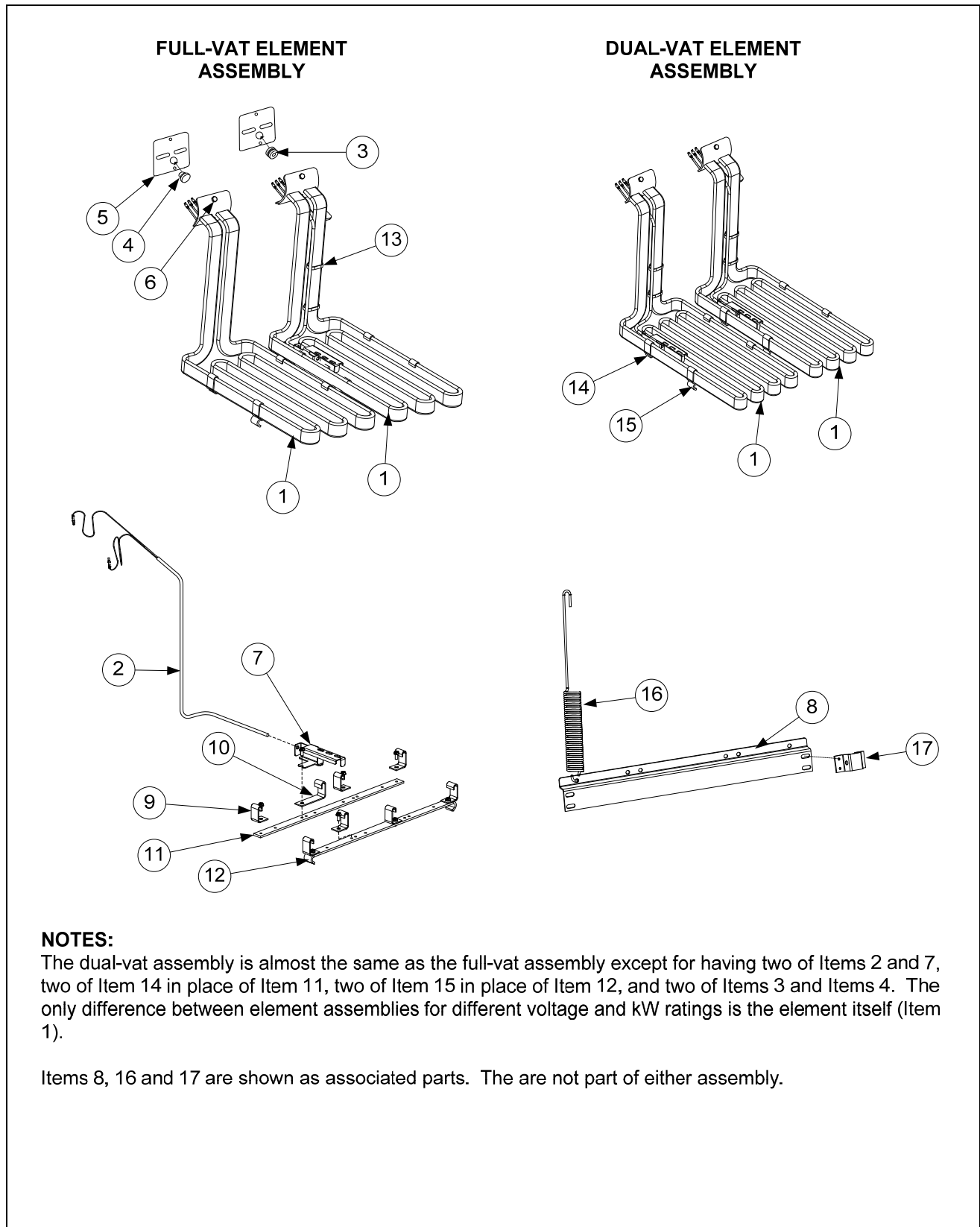
| ITEM | PART # | COMPONENT |
|---|-----------|---|
| 1 | 1068659 | Box Assembly, Left Contactor |
| 2 | 1068661 | Box Assembly, Right Contactor |
| 3 | 2210482 | Cover, Left Hand Contactor Box |
| 4 | 2220482 | Cover, Right Hand Contactor Box |
| * | 8070070 | Terminal, Ground Lug |
| √ 5 | 8263417 | Contactor, 24V 50 Amp TESS LC1D32B7 (<i>Heat</i>) |
| √ 6 | 8101202 | Contactor, 24V 40 Amp (<i>Latch</i>) |
| 7 | 8071683 | Relay, Hood 12VDC |
| 8 | 8070922 | Holder, Bus Fuse |
| 9 | 8072278 | Fuse, 20 Amp |
| 10 | 8070064 | Transformer, 480V/120V 150VA |
| * | 2210610 | Bracket, Left Hand Contactor Box Mounting |
| * | 2220610 | Bracket, Right Hand Contactor Box Mounting |
| See Section 1.13 for Power Cords | | |
| * | 130000664 | Wire, Assy, Diode Connector (<i>Internal</i>) |
| * | 8263720 | Harness, Adapter TVS Diode Kit (<i>External</i>) |
| * | 8070012 | Relay, Tilt Switch 18 Amp 1/3 HP 24 V Coil |

* Not illustrated.

√ Recommended parts.

1.5.3 Heating Element Assemblies and Associated Parts

1.5.3.1 Element Assemblies and Hardware



NOTES:

The dual-vat assembly is almost the same as the full-vat assembly except for having two of Items 2 and 7, two of Item 14 in place of Item 11, two of Item 15 in place of Item 12, and two of Items 3 and Items 4. The only difference between element assemblies for different voltage and kW ratings is the element itself (Item 1).

Items 8, 16 and 17 are shown as associated parts. They are not part of either assembly.

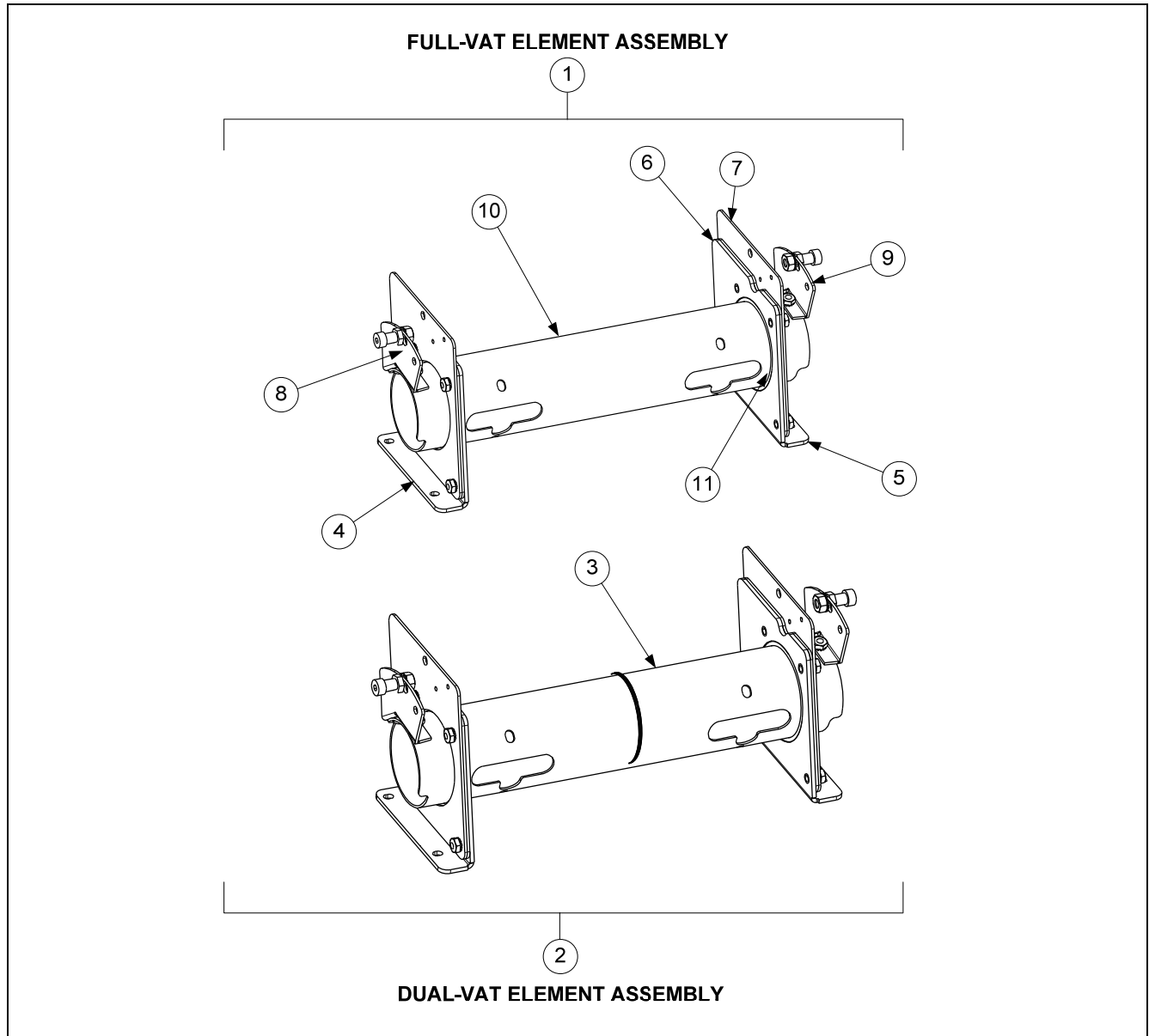
1.5.3.1 Element Assemblies and Hardware cont.

| ITEM | PART # | COMPONENT |
|------|---------|--|
| 1 | | Element |
| | 8262198 | 200V 7.0 kW (220V 8.5kW used in some export 3-phase 4-wire WYE units) |
| √ | 8262192 | 208V 7.0 kW |
| | 8262200 | 220V 7.0 kW (240V 8.5kW used in some export 3-phase 4-wire WYE units) |
| | 8262193 | 230V 7.0 kW |
| | 8262199 | 230V 8.5 kW |
| | 8262194 | 240V 7.0 kW |
| | 8262196 | 480V 7.0 kW |
| √ 2 | 8263450 | Kit, Touch Elec Temperature Probe- includes tie wraps and grommet. |
| 3 | 8160681 | Grommet, Probe |
| 4 | 8160480 | Plug, .375-inch Dome |
| 5 | 8160688 | Gasket, Element |
| 6 | 8091003 | Screw, 10-32 X 3/8-inch Hex Head SS |
| * | 8090766 | Nut, 10-32 Keps Hex Head SS |
| * | 2304028 | Wrench, Element Tube Nut Spanner |
| 7 | 2303714 | Bracket, Temperature Probe 7.0kW |
| | 2300784 | Bracket, Temperature Probe 8.5kW (used in some export 3-phase 4-wire WYE units) |
| 8 | 2200464 | Bracket, Lower Spring |
| 9 | 9102042 | Clamp, Element (Short) |
| 10 | 2300781 | Clamp, Element (Long) |
| 11 | 2304902 | Support, Full-Vat Element Rear |
| * | 2308163 | Backet, LOV Hybrid Element |
| 12 | 2304101 | Support, Full-Vat Element Front |
| 13 | 8090567 | Tie-Wrap, Metal |
| 14 | 2304903 | Support, Dual-Vat Element Bottom Rear (use 230-8163 for fish vat) |
| 15 | 2304103 | Support, Dual-Vat Element Bottom Front |
| 16 | 8103030 | Spring, Element Lift Left |
| | 8103031 | Spring, Element Lift Right |
| 17 | 2200733 | Bracket, Lower Spring Mating |

* Not illustrated.

√ Recommended parts.

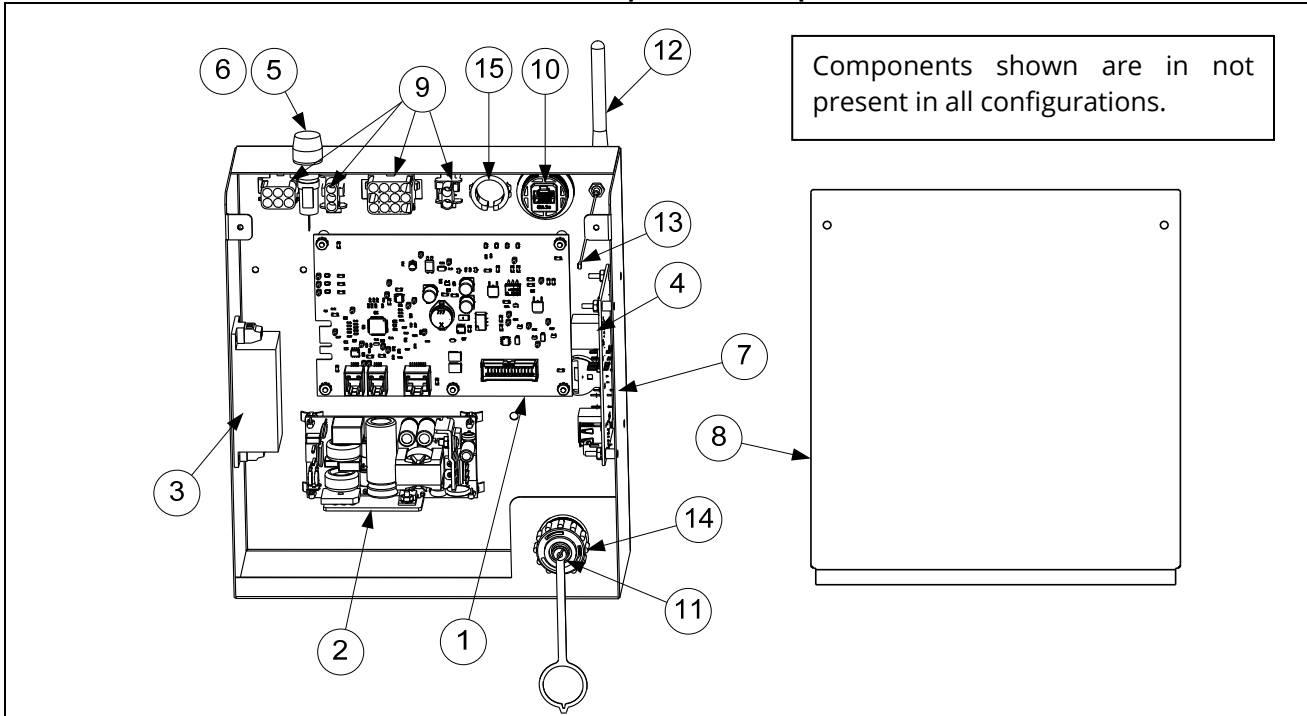
1.5.3.2 Element Tube Assemblies



| ITEM | PART # | COMPONENT |
|------|-----------|---|
| 1 | 1080297SP | Tube Assembly RE Element, Full-Vat |
| 2 | 1080298SP | Tube Assembly RE Element, Dual-Vat |
| 3 | 8103246 | Bushing and Tube Assembly, Dual-Vat |
| 4 | 1080315 | Bracket Assembly, LH Element Tube Support |
| 5 | 1080316 | Bracket Assembly, RH Element Tube Support |
| 6 | 2200122 | Plate, Element Tube Support Inner |
| 7 | 2200123 | Plate, Element Tube Support Outer |
| 8 | 1067651SP | Bracket Assembly, LH Upper Spring (<i>use 1066569SP for 17kW</i>) |
| 9 | 1067652SP | Bracket Assembly, RH Upper Spring (<i>use 1066570SP for 17kW</i>) |
| 10 | 8102992 | Tube, Full Vat Element Mounting |
| 11 | 8102993 | Bushing, Tube End Teflon |
| * | 8262598 | Kit, Tilt Switch |
| * | 8074742 | Switch, Long Lever High Temp |

* Not illustrated.

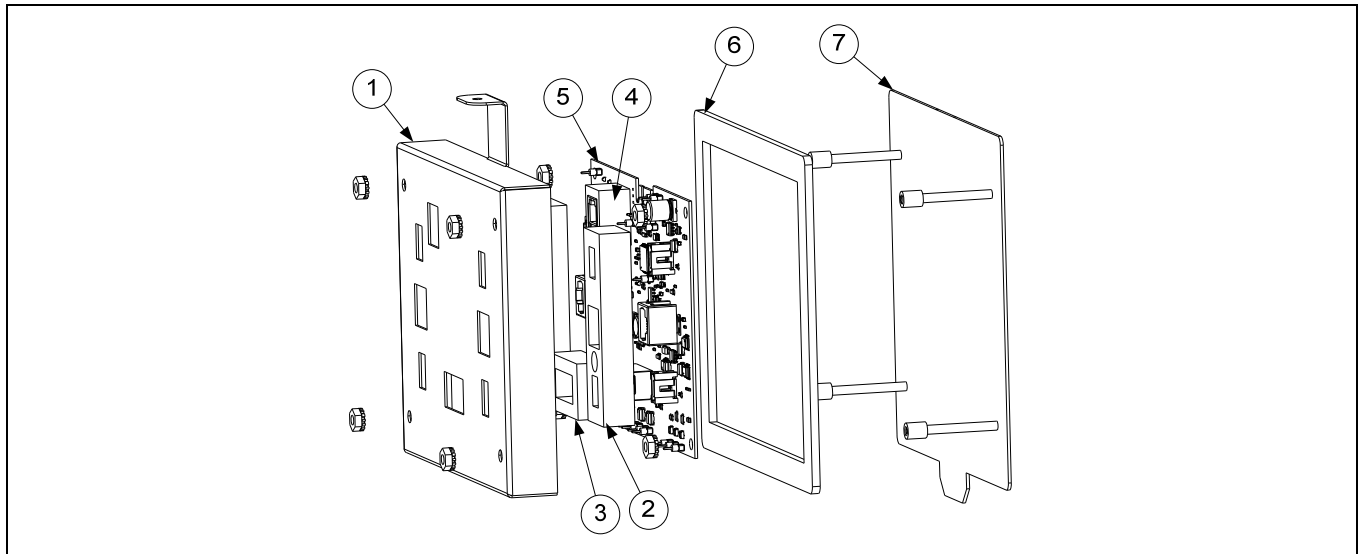
1.5.4 FIB (Filtration Interface Board) Filter and Top Off Box Components



| ITEM | PART # | COMPONENT |
|------|-----------|--|
| | 1088033SP | Box Assembly, ATO/FIB Filter with KCCM SUI (Use 1088032SP without optional SUI) |
| √ 1 | 1086575 | Board, FIB w/ Software |
| √ 2 | 8263684 | Power Supply, 24VDC 130W ATO, Actuators, Filter Pump, Top Off Pump |
| √ 3 | 8075974 | Power Supply, 24VDC, 15W for KCCM SUI board (only used on early units) |
| * | 1087247 | Holder Assembly, Fuse with Leads (used with the KCCM SUI Board) |
| √ 4 | 8075982 | PCB, Assy JLOV KCCM/SUI |
| √ 5 | 8075570 | Fuse, 250VAC 3.5A Fast Acting |
| 6 | 8071321 | Holder, Fuse |
| 7 | 1087746 | Box, Assembly |
| 8 | 2401727 | Cover, ATO/Filter Box |
| 9 | 8076240 | Harness, Bulk Oil/ATO/FIB (J1 (30-pin) FIB to illustrated connectors inside FIB Box) (Prior to 06/2022) |
| | 8076613 | Harness, Bulk Oil/ATO/FIB (J1 (30-pin) FIB to illustrated connectors inside FIB Box) (After 06/2022) |
| 10 | 8075967 | Coupler, 8PBC to 8PBC |
| 11 | 8075970 | Cap, Dust |
| 12 | 8075975 | Antenna |
| 13 | 8076225 | Cable, U. FL to RP-SMA Bulkhead (attaches from item 12 to Item 4) |
| 14 | 8075969 | Cable, USB Receptacle Mount (USB end attaches to Item 4) |
| 15 | 8071926 | Bushing, .875 Split |
| * | 8074056 | Connector, 3-Wire Snap |
| * | WIR1179 | Wire Assy, FQLAU Filter/ATO Power (Connects item 1 and item 2) |
| | | See Wiring Diagrams See Wiring Diagrams in BIELA14-T Wiring Diagram Manual for cable locations |
| * | 8075632 | Terminator, CAN End Communication RJ11 (FIB J4) |
| * | 8075977 | Cable, RJ45 Cat5E 7.87" (From Item 10 to Item 4) |
| * | 8076314 | Harness, Filter/ATO Power/Control 24" (C5 (6-pin) Rear FIB Box - C5 (6-pin) Left Component Box) |
| * | 8076242 | Harness, KCCM SUI Communication/Power (RJ45 item #4 to J4 FIB and to item #3) |
| * | 8076241 | Harness, Power Supply (From item #2 to Snap Connectors) |
| * | 8075551 | Cable, C-Bus Right SIB (J7) to FIB (Filtration Interface Board) (J3) |
| * | 8075810 | Cable, FIB to VIB Actuator Power (used from FIB item #1 (J2) to VIB (J4) and from VIB (J3) to VIB (J4)) |

* Not illustrated √ Recommended parts.

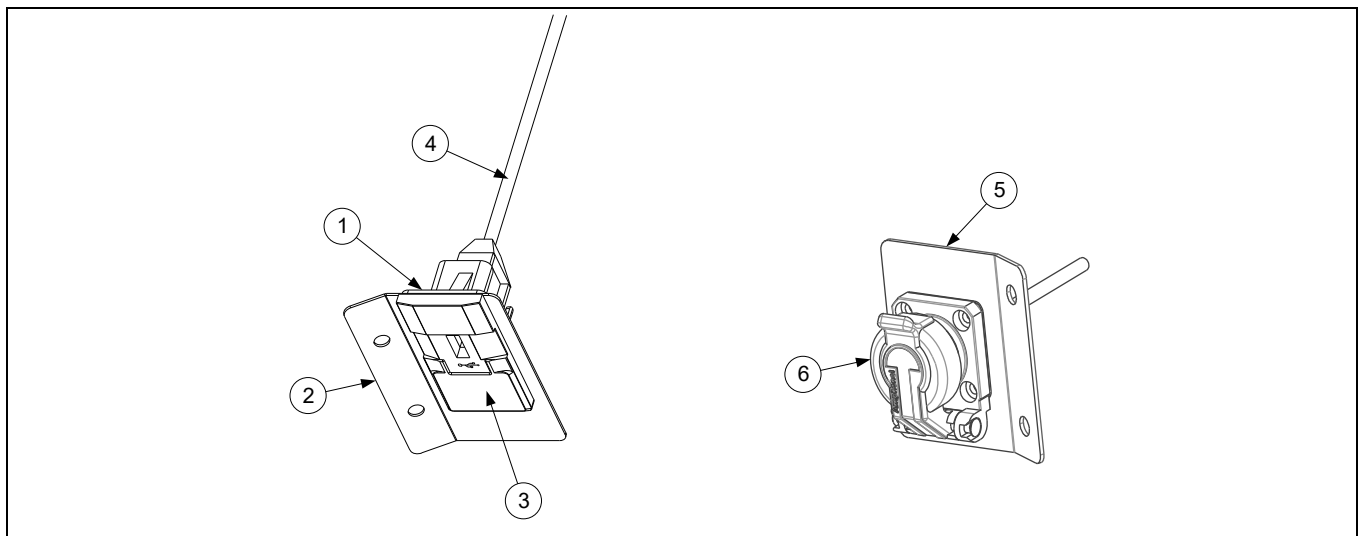
1.5.5 VIB (Valve Interface Board) Components



| ITEM | PART # | COMPONENT |
|------|-----------|------------------------------|
| √ | 1085996SP | VIB Board Assembly |
| 1 | 8242346 | Cover, VIB Board Housing |
| 2 | 8161015 | Gasket, Actuator Power VIB |
| 3 | 8161013 | Gasket, 20 pin VIB Connector |
| 4 | 8161014 | Gasket, P-Bus VIB Connector |
| 5 | 1086574SP | Board, VIB with SW |
| 6 | 8160820 | Seal, Linear Actuator Board |
| 7 | 1080097 | Box, Linear Actuator Stud |

√ Recommended parts.

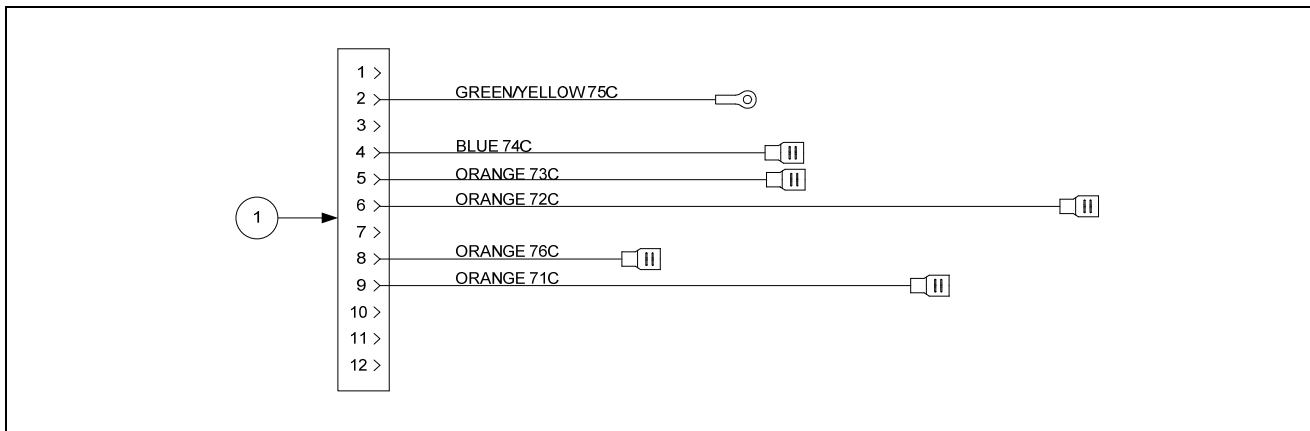
1.5.6 USB Connector



| ITEM | PART # | COMPONENT |
|------|-----------|---------------------------------|
| | 1084737 | Bracket Assy, USB Mounting Elec |
| 1 | 2207520 | Plate, Backing USB Bezel |
| 2 | 2600193 | Bracket, Elec USB with Spreader |
| 3 | 8074989 | Bezel, USB Port |
| 4 | 8074990 | Cable, USB |
| | 130000191 | Bracket Assy, USB Mounting Elec |
| 5 | 130000190 | Bracket, Elec USB Mounting |
| 6 | 8105041 | USB, Self-Closing Flange |

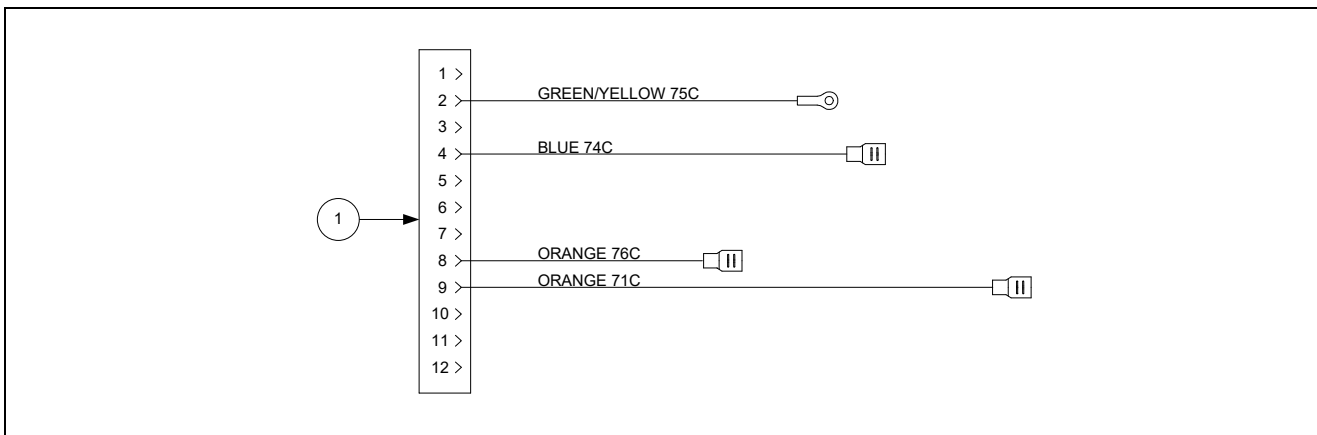
1.5.7 Wiring

1.5.7.1 Contactor Box Wiring Assemblies – 12-Pin Dual-Vat C-1



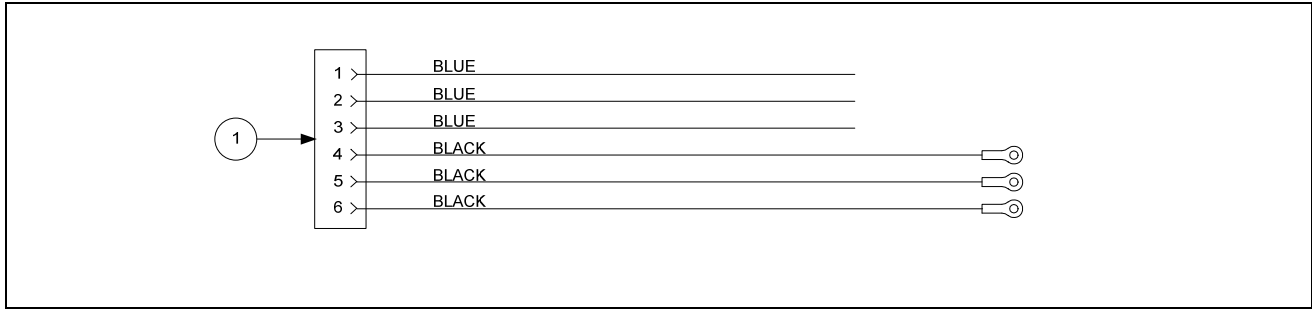
| ITEM | PART # | COMPONENT |
|------|-----------|---|
| 1 | 1087518SP | Contactor Box Harness Assembly Dual Vat |

1.5.7.2 Contactor Box Wiring Assemblies – 12-Pin Full-Vat C-1



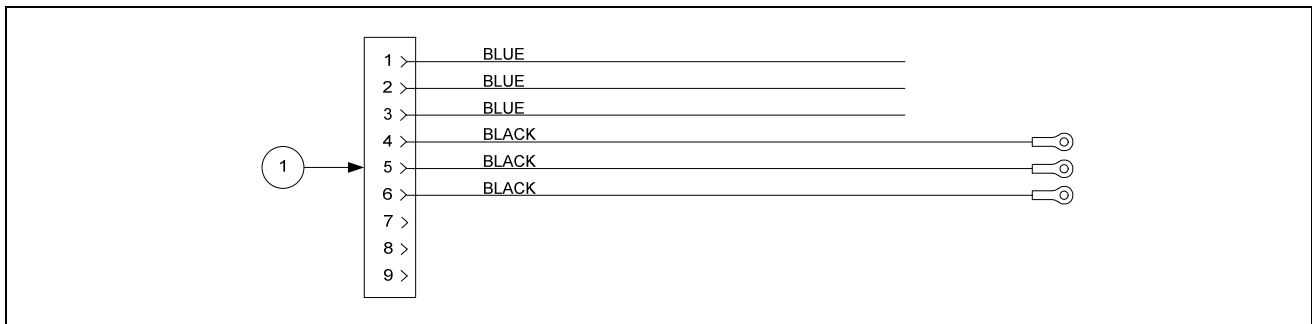
| ITEM | PART # | COMPONENT |
|------|-----------|---|
| 1 | 1087516SP | Contactor Box Harness Assembly Full Vat |

1.5.7.3 Contactor Box Wiring Assembly - 6-Pin (Left Element)



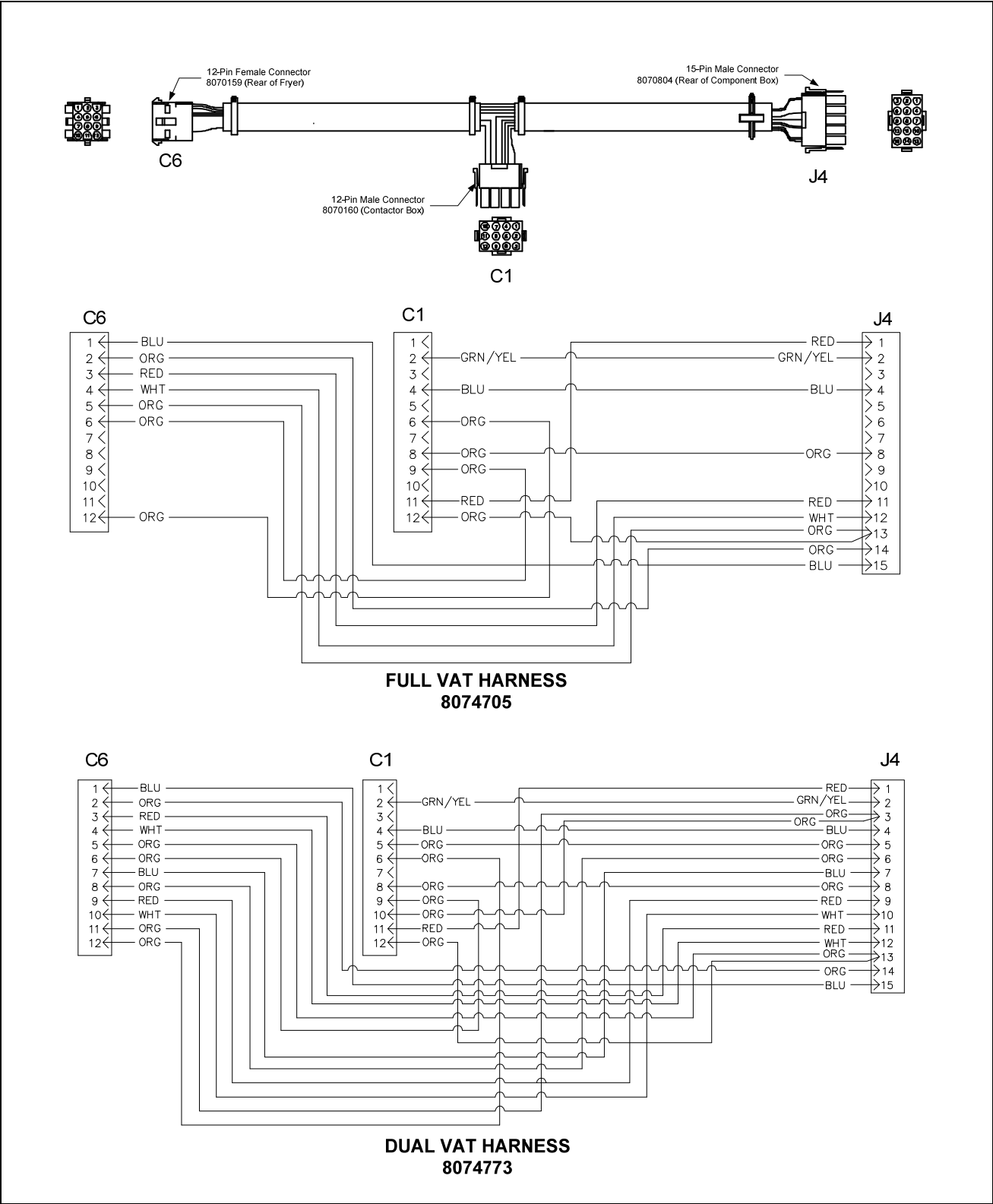
| ITEM | PART # | COMPONENT |
|------|-----------|-------------------------------|
| 1 | 1068744SP | 14/17 kW Mechanical Contactor |

1.4.5.4 Contactor Box Wiring Assembly - 9-Pin (Right Element)



| ITEM | PART # | COMPONENT |
|------|-----------|-------------------------------|
| 1 | 1068745SP | 14/17 kW Mechanical Contactor |

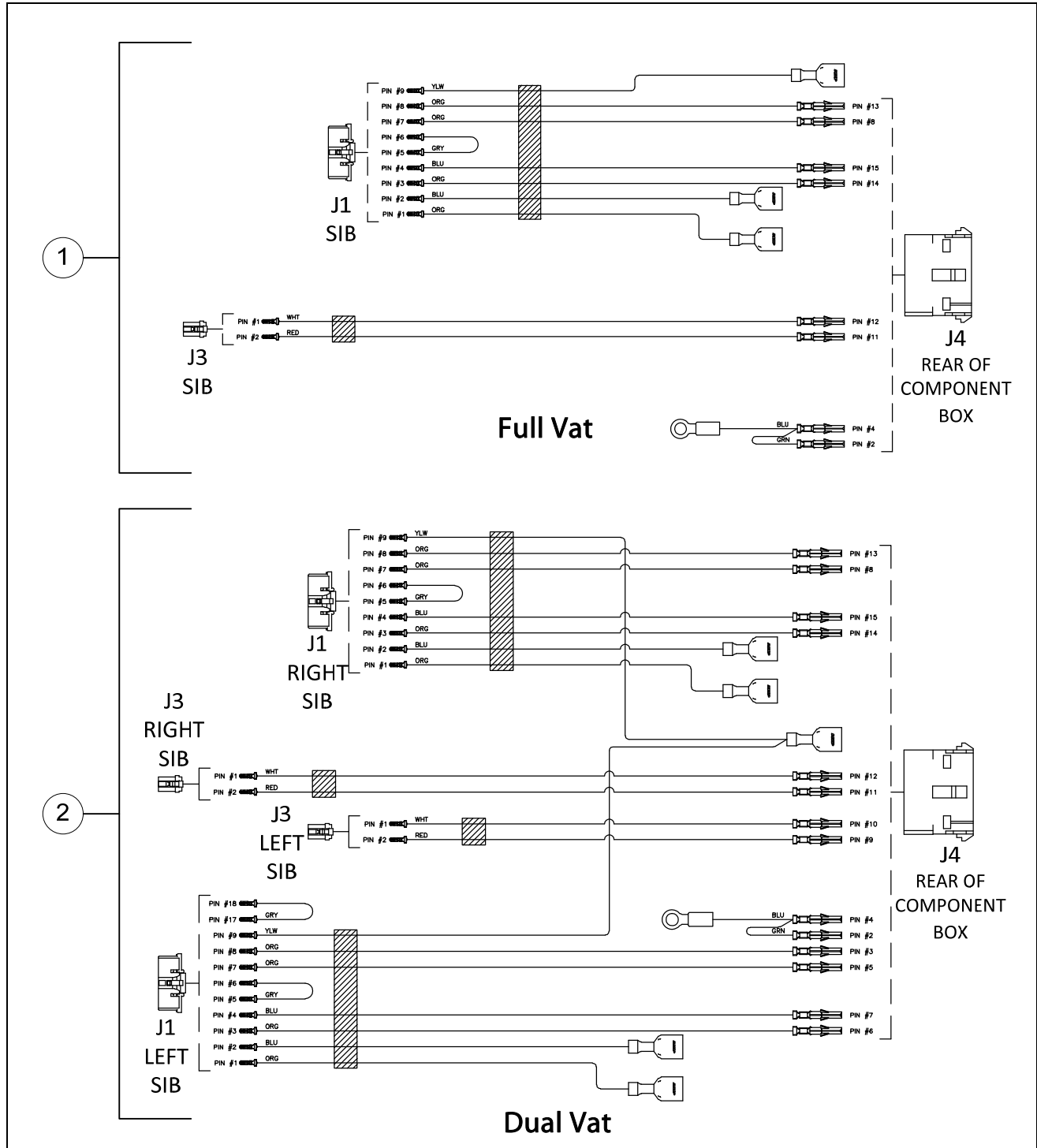
1.5.7.5 Main Wiring Harnesses



| ITEM | PART # | COMPONENT |
|------|---------|--|
| 1 | 8074705 | Full Vat Main Wiring Harness J4 to C1 and C6 |
| 2 | 8074773 | Dual Vat Main Wiring Harness J4 to C1 and C6 |

See the BIELA14-T Wiring Diagrams Manual.

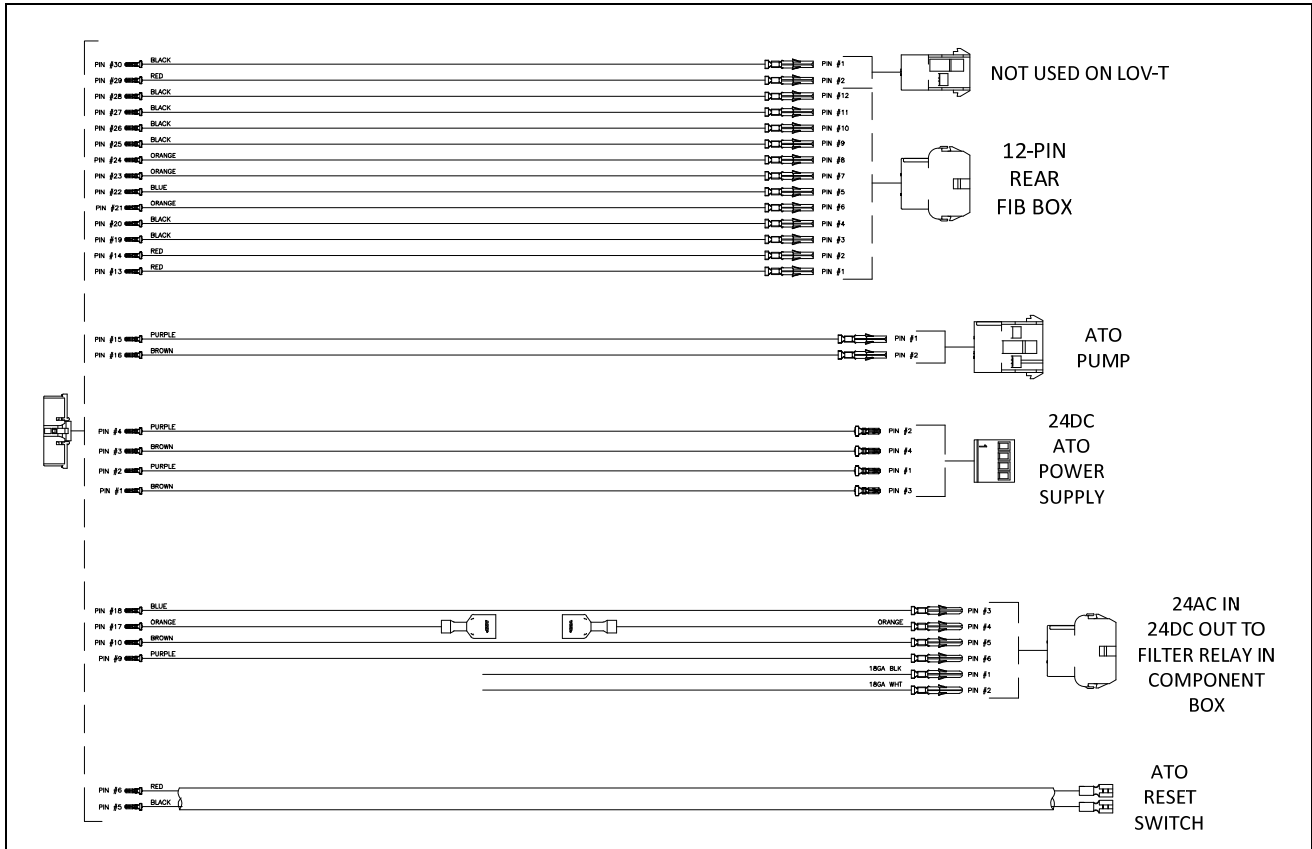
1.5.7.6 Component Box Wiring Harnesses



| ITEM | PART # | COMPONENT |
|------|---------|--|
| 1 | 8075951 | Full Vat Control Harness J4 to J1 and J3 |
| 2 | 8075952 | Dual Vat Control Harness J4 to J1 and J3 |

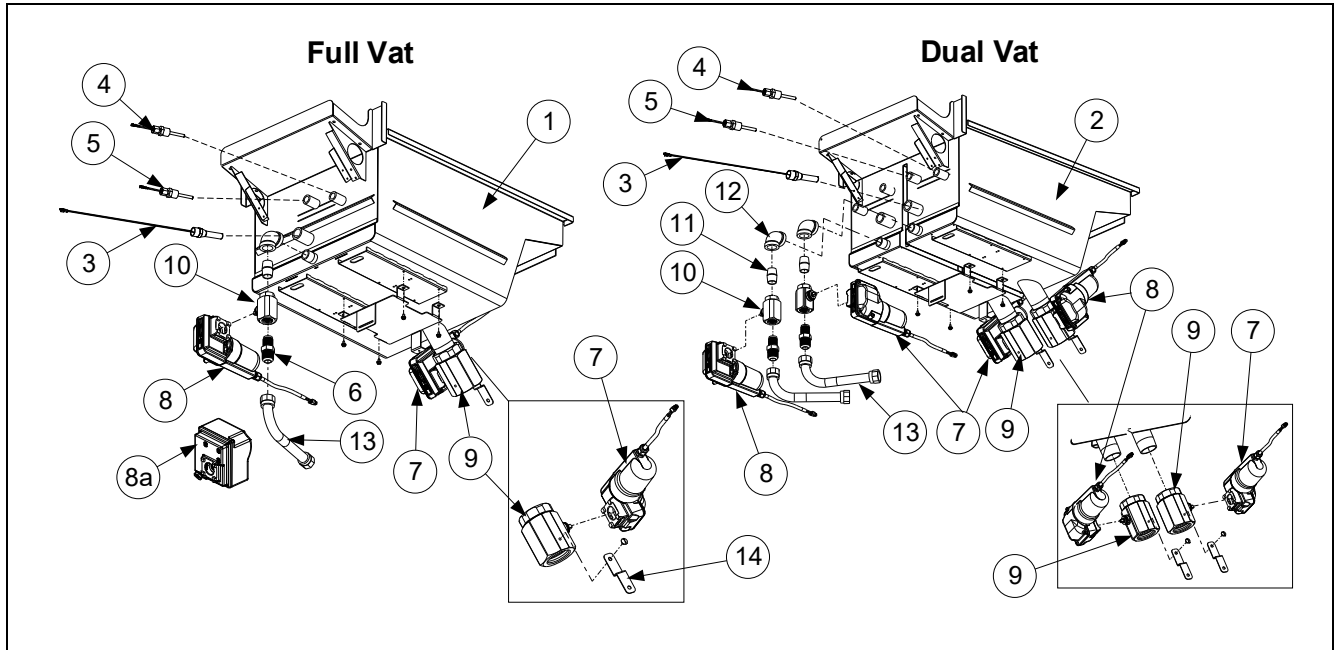
See the BIELA14-T Wiring Diagrams Manual.

1.5.7.7 FIB Box Wiring Harness



| ITEM | PART # | COMPONENT |
|------|---------|--|
| 1 | 8076240 | Harness, Bulk Oil, Topoff /FIB (<i>Prior to 06-2022</i>) |
| 2 | 8076613 | Harness, Bulk Oil, Topoff /FIB (<i>After 06/2022</i>) |

1.6 Frypot Assemblies and Associated Parts

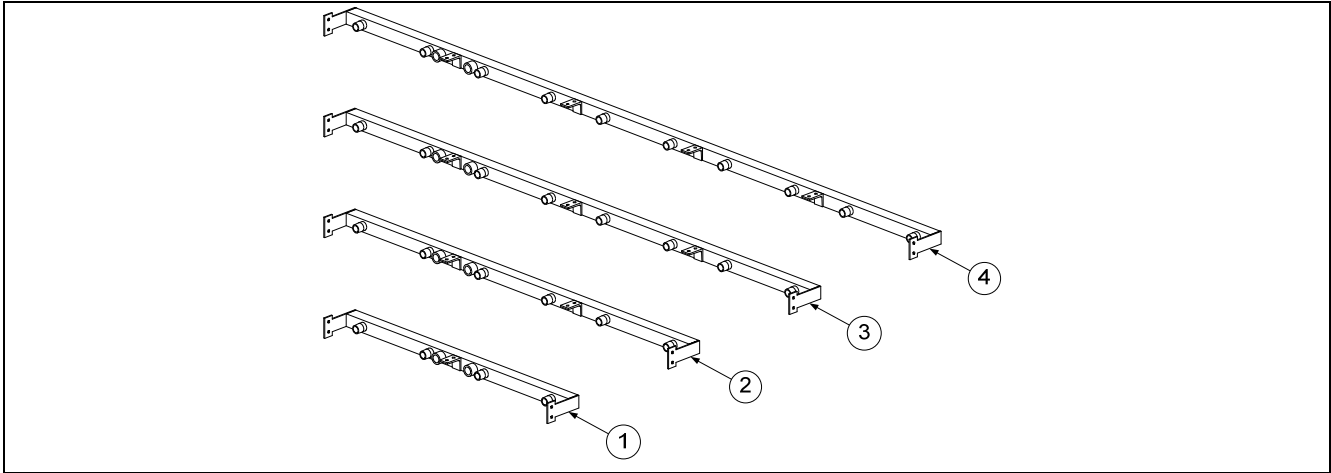


| ITEM | PART # | COMPONENT |
|------|-----------|--|
| 1 | 8238958 | Frypot, Full-Vat |
| 2 | 8238959 | Frypot, Dual-Vat |
| ✓ 3 | | Thermostat Assembly, High-Limit Long Standard |
| | 8262454 | Non-CE Full Vat 425°F (218°C) (17kW FV and 14kW FV) (Color Coded Black 8067543) |
| | 8262456 | Non-CE Dual Vat 435°F (224°C) (22kW, 17kW DV and 14 kW DV) (Color Coded Red 8068035) |
| | 8262455 | CE Full and Dual Vat 415°F (213°C) (14kW and 17kW CE) (Color-Coded Yellow 8068132) |
| ✓ 4 | 8263287 | Probe, VIB (Auto Filtration) RTD Kit |
| ✓ 5 | 8263544 | Probe, ATO (Topoff) RTD Kit |
| 6 | 8101668 | Adaptor, Male 5/8" OD x 1/2" |
| ✓ 7 | 8075809 | Actuator, Rotary 24VDC (BLUE) |
| ✓ 8 | 8075808 | Actuator, Rotary 24VDC (BLACK) |
| ✓ 8a | 130013720 | Actuator, Rotary 24VDC (GRAY SQUARE) |
| ✓ 9 | 8104353 | Valve, 1¼-inch NPT Rotary Actuator |
| ✓ 10 | 8103754 | Valve, ½" NPT Return Rotary Actuator |
| 11 | 8130022 | Nipple, ½" x Close NPT BM |
| 12 | 8130062 | Elbow, ½-inch BM 90° |
| 13 | 8101067 | Flexline, 5/8" OD x 8.50" Long |
| 14 | 2207386 | Support, Drain |
| * | 8161118 | Insulation, Superwool EL30 |

Always replace with the same type/color of actuator that was removed.

✓ Recommended parts.

1.7 Oil Return Manifolds

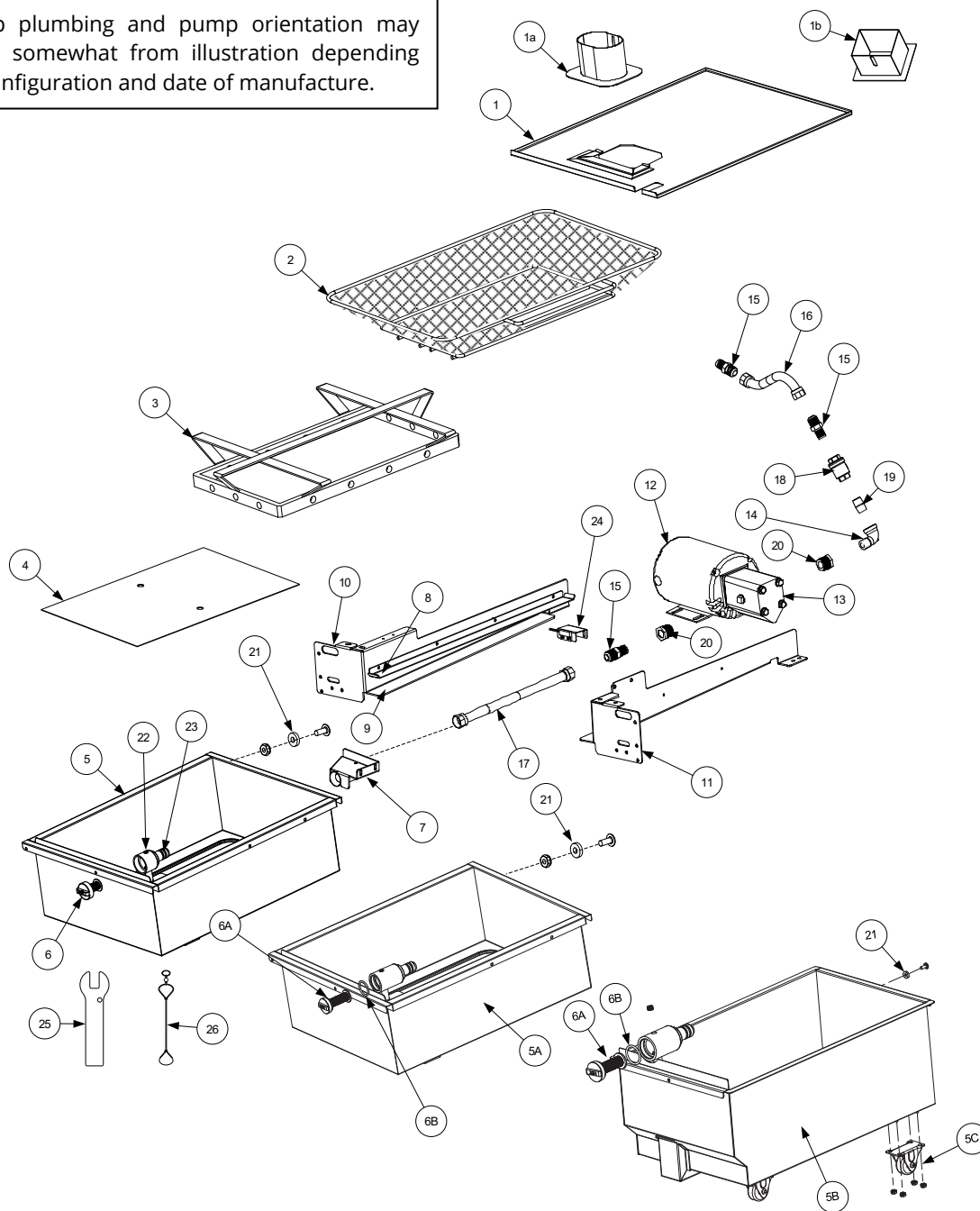


| ITEM | PART # | COMPONENT |
|------|---------|-------------------------------|
| 1 | 8103015 | Manifold, Two-Station Fryer |
| 2 | 8103016 | Manifold, Three-Station Fryer |
| 3 | 8103017 | Manifold, Four-Station Fryer |
| 4 | 8103018 | Manifold, Five-Station Fryer |
| * | 8130907 | Cap, 15/16-inch Valve |

* Not illustrated.

1.8 Filtration System Components

Pump plumbing and pump orientation may differ somewhat from illustration depending on configuration and date of manufacture.



| ITEM | PART # | COMPONENT |
|------|-----------|---|
| 1 | 8237744 | Lid, Standard Size Filter Pan (<i>3/4/5 Vat Fryers</i>) |
| | 8238810 | Lid, Half Size Filter Pan (<i>2-Vat Fryer (prior to 11/2022)</i>) |
| 1A | 8237685 | Guard, Pan Splash Lid <i>Oval (3/4/5 Vat Fryers)</i> |
| | 8237915 | Guard, Pan Splash Lid <i>Oval (2-Vat Fryer)</i> |
| 1B | 130033732 | Guard, Pan Splash Lid <i>Square</i> |
| 2 | 8103276 | Crumb Tray, Standard Size Filter Pan (<i>3/4/5 Vat Fryers</i>) |
| | 8103288 | Crumb Tray, Two-Vat Fryer, Half Size Filter Pan (<i>2-Vat Fryer</i>) |
| 3 | 8103268 | Hold-Down Ring 16.56" x 22.32", Standard Size Pan (<i>3/4/5 Vat Fryers</i>) |
| | 8103289 | Hold-Down Ring 11.20" x 19.10", Half Size Filter Pan (<i>2-Vat Fryer</i>) |

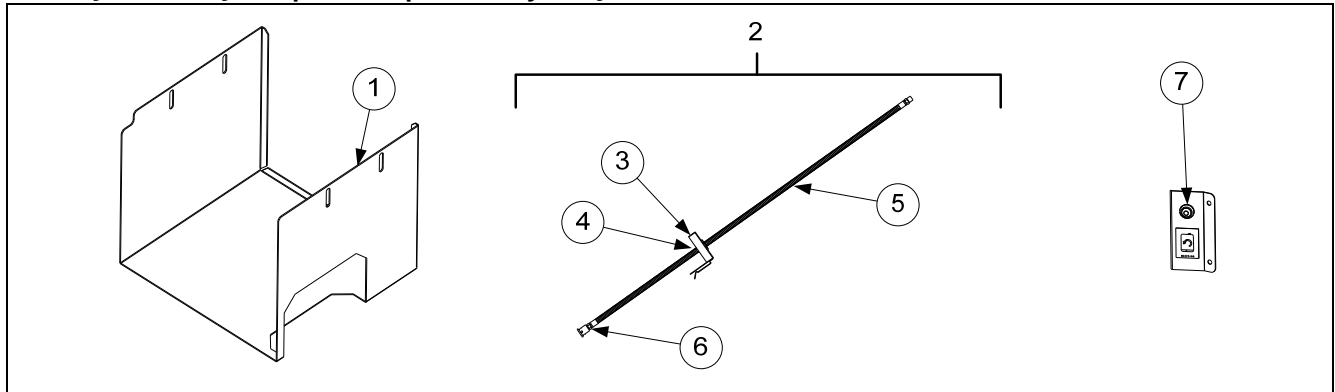
| ITEM | PART # | COMPONENT |
|------|-------------|--|
| 4 | 8122025 | SanaGrid Filter Screen |
| 5 | 1088031SP | Pan, Assy, Filter LOV-T™ Standard Size (3/4/5 Vat Fryers) without casters (prior to 11/2022) |
| | 1088465SP | Pan, Assy, Filter LOV-T Standard Size (3/4/5 Vat Fryers) with casters (prior to 11/2022) |
| | 1087700SP | Pan, Assy, Filter Half Size (2-Vat Fryer) (prior to 03/2019) |
| | 1088399SP | Pan, Assy, Filter Half Size (2-Vat Fryer) (04/2019 to 10/2022) |
| 5A | 130000517SP | Pan, Assy, Filter LOV-T™ Standard Size (3/4/5 Vat Fryers) without casters (after 10/2022) |
| | 130000524SP | Pan, Assy, Filter LOV-T™ Standard Size (3/4/5 Vat Fryers) with casters (after 10/2022) |
| 5B | 130000514SP | Pan, Assy, Filter Half Size (2-Vat Fryer) with casters (after 10/2022) |
| | 130000519SP | Pan, Assy, Filter Half Size (2-Vat Fryer) with casters (after 10/2022) Japan ONLY |
| 5C | 8104137 | Caster, 2-inch Low Profile Rigid |
| 6 | 8238335 | Screen, Suction Line Filter (Short) |
| 6A | 8239651 | Screen, Suction Line Filter (Long) |
| 6B | 8161213 | O-Ring, Inline Filter Cap (for use with 8239651) |
| 7 | 8239501 | Suction Tube Standard LOV™ (3/4/5 Vat Fryers) (prior to 11/2022) |
| | 130000513 | Suction Tube Standard LOV™ (3/4/5 Vat Fryers) (after 10/2022) may differ slightly in appearance |
| | 8239429 | Suction Tube Two Vat LOV™ (2-Vat Fryer) (prior to 11/2022) |
| | 130000512 | Suction Tube Two Vat LOV™ (2-Vat Fryer) (after 10/2022) may differ slightly in appearance |
| 8 | 2203879 | Rail, Filter Pan Upper (3/4/5 Vat Fryers) |
| | 2306616 | Rail, GL230 LH/RH Upper Pan (2-Vat Fryer) |
| 9 | 2306619 | Rail, GL230 LH/RH Lower Pan (2-Vat Fryer) |
| 10 | 2203748 | Support, Left Filter Pan (3/4/5 Vat Fryers) |
| | 2203275 | Support, Left Filter Pan (2-Vat Fryer) |
| 11 | 2203749 | Support, Right Filter Pan (3/4/5 Vat Fryers) |
| | 1068487 | Support, Right Filter Pan (2-Vat Fryer) |
| 12 | | Motor and Gasket Kit |
| | 8261785 | 100V 50/60 Hz |
| √ | 8261712 | 115V 50/60 Hz |
| √ | 8261756 | 208V 50/60 Hz |
| | 8261270 | 220-240V 50/60 Hz |
| | 8261755 | 250V 50/60 Hz |
| √ 13 | 8263192 | Pump, Filter Viking 8 GPM Kit (includes gasket 8160093, screws 8091020 & washers 8090194) |
| * | 8091020 | Cap Screw, 5/16-inch-18 5.00" NC Hex (Connects pump to motor) (use 8090194 washers) |
| 14 | 8130165 | Elbow, ST ½-inch x ½-inch NPT 90° BM |
| 15 | 8101668 | Adapter, ⅝-inch to ½-inch NPT Male |
| 16 | 8101067 | Flexline, 8.5-inch Oil Return (to oil manifold) |
| 17 | 8101057 | Flexline, 13-inch Oil Return (from filter pan) |
| 18 | 8104878 | Check Valve 1 PSI ½" NPT |
| 19 | 8130022 | Nipple, ½-inch x Close NPT BM |
| 20 | 8130031 | Bushing, ¾" NPT x ½" BM |
| 21 | 8103007 | Magnet, Pull Ring |
| 22 | 8130989 | Plug, ⅝-inch NPT Socket Head (used with Item 5, 5A, 5B) |
| √ 23 | 8263288 | O-Ring (8161041) (Qty. of 6; used w/ Item 5, 5A, 5B) |
| 24 | 1069251SP | Assembly, Filter Pan Switch (1065876SP Sensor only) (3/4/5 Vat Fryers) |
| | 1068080SP | Assembly, Filter Pan Switch (1065876SP Sensor only) (2-Vat Fryer) |
| * | 1065876SP | Sensor, Magnet |
| 25 | 2401086 | Wrench, Pre-Filter Cap |
| 26 | 8104167 | Lanyard, Filter Screen Wrench |
| * | 8071105 | Heater Strip Assembly, 100-120V 25W 18" |
| * | 8071098 | Heater Strip Assembly, 208-250V 25W 18" |
| * | 1082813SP | Oil Disposal Connection (France Only) |

* Not illustrated.

√ Recommended parts.

1.9 ATO (Auto Top-Off) Components

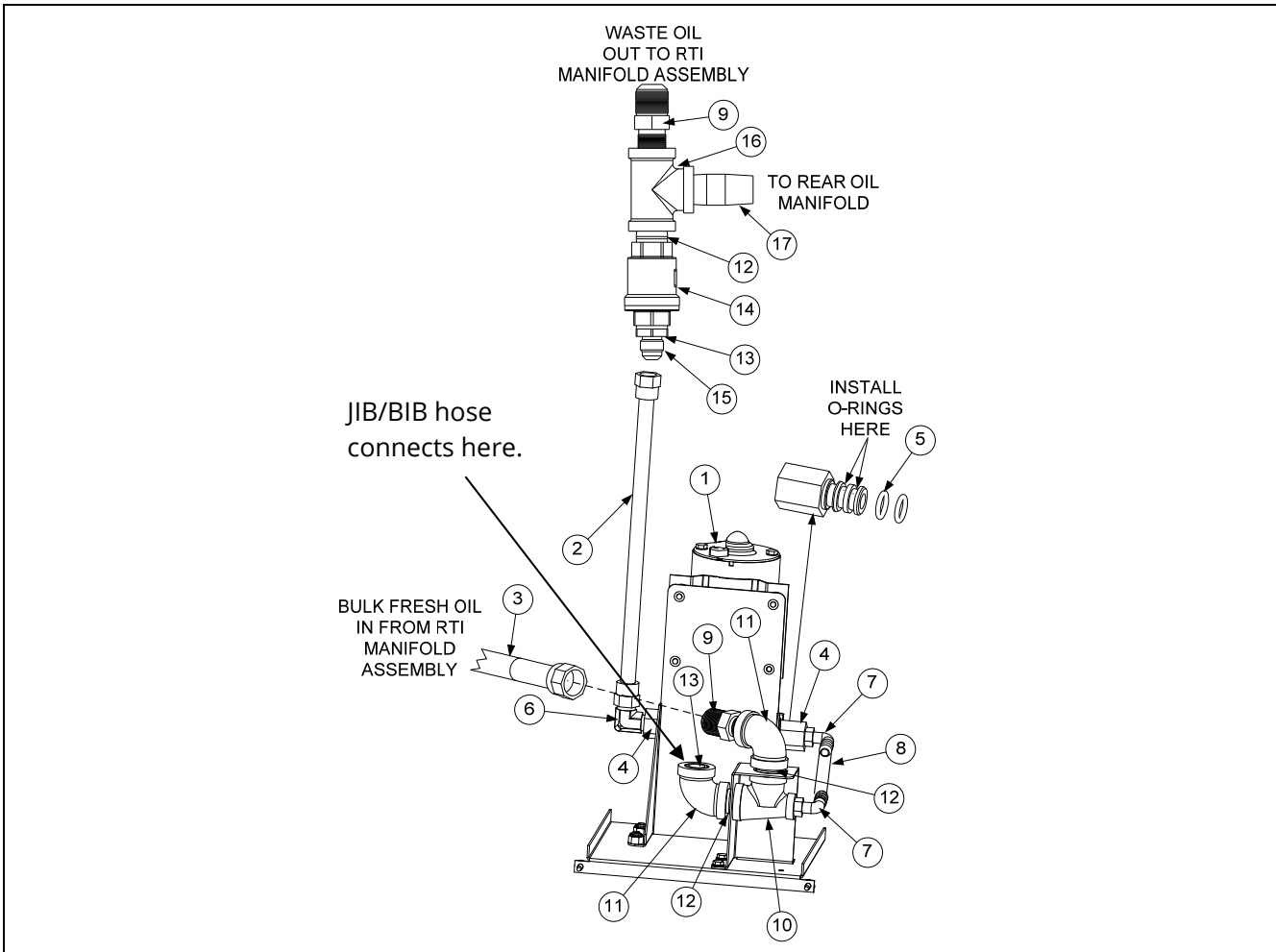
1.9.1 JIB Cradle, JIB Cap / Pick-Up Assembly and JIB (ATO) Reset Switch



| ITEM | PART # | COMPONENT |
|------|-----------|--|
| 1 | 2208363 | Cradle, JIB |
| 2 | 1081049SP | Cap, JIB Assembly (<i>use 1069495SP for BIB [Europe] (use 1086927 Europe) (use 1087216SP Middle East, France)</i>) |
| 3 | 8237575 | Cap, JIB (<i>use 8236812 for BIB [Europe] (use 8239175 [Europe]) (use 8104715 Cap Middle East)</i>) |
| 4 | 8103664 | Bushing, Heyco |
| 5 | 8103663 | Hose, JIB |
| 6 | 8103300 | Tip Assembly, JIB Suction Hose |
| √ 7 | 8074678 | Switch, Momentary JIB Reset |

√ Recommended parts.

1.9.2 ATO Pump Assembly

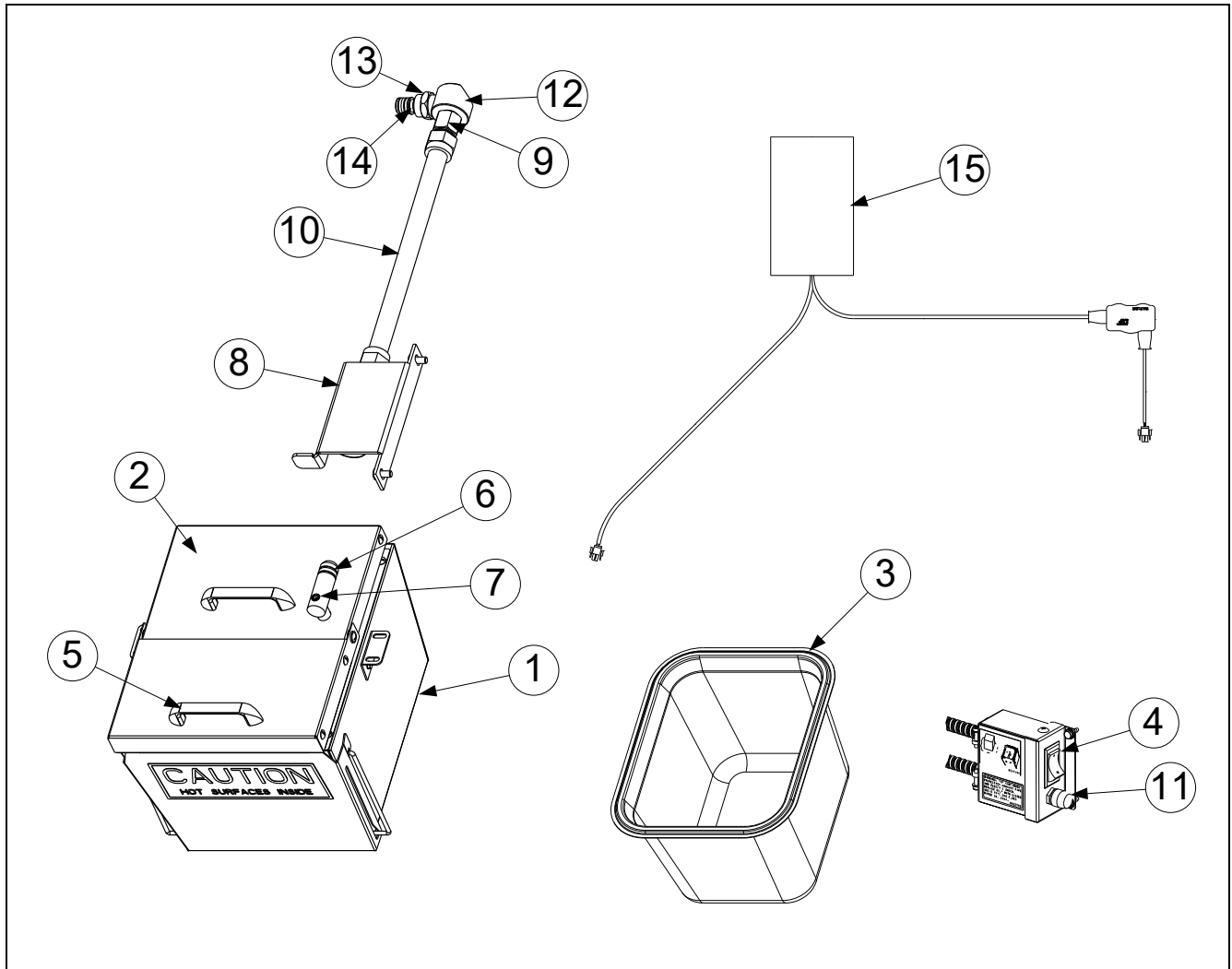


| ITEM | PART # | COMPONENT |
|------|---------|--|
| √ 1 | 1084372 | Pump, Shurflo 24VAC |
| | 1085673 | Pump, Shurflo 24VAC (CE) |
| 2 | 8103265 | Flexline, ½" OD x 24" (3/8" Flare) (3/4/5 Vat Fryers) (Out to oil return manifold) |
| | 8103591 | Flexline, ½" OD x 8-inch (2-Vat Fryer) (Out to oil return manifold) |
| 3 | 8101069 | Flexline, ⅝" OD x 29.5-inch (In from RTI fresh oil solenoid) |
| 4 | 8103578 | Fitting, Shurflo Pump |
| 5 | 8160782 | O-Ring, Viton #111 |
| 6 | 8130940 | Elbow, ¼" NPT x ⅜" Flare |
| 7 | 8160710 | Fitting, ¼" NPT x ½" Barb |
| 8 | 8111166 | Hose, Silicone Braided 5" (sold by the foot) (Cut and attach to item 7 with a ty wrap) |
| 9 | 8101668 | Adaptor, Male ⅝" OD x ½" |
| 10 | 8237411 | Bracket, JIB Elbow Elec LOV with Reducing Tee |
| 11 | 8130062 | Elbow, ½" BLK 90° NPT BM |
| 12 | 8130022 | Nipple, ½" x Close NPY BM |
| 13 | 8130304 | Bushing, ½" x ¼" Flush |
| 14 | 8104878 | Check valve, ½" NPT 1psi |
| 15 | 8103270 | Fitting, ⅜" Flare x ¼" NPT |
| 16 | 8130003 | Tee, ½" x ½" x ½" BM |
| 17 | 8130298 | Nipple, ½" x 2" NPT BM |

* Not illustrated.

√ Recommended parts.

1.10 Shortening Melting Unit



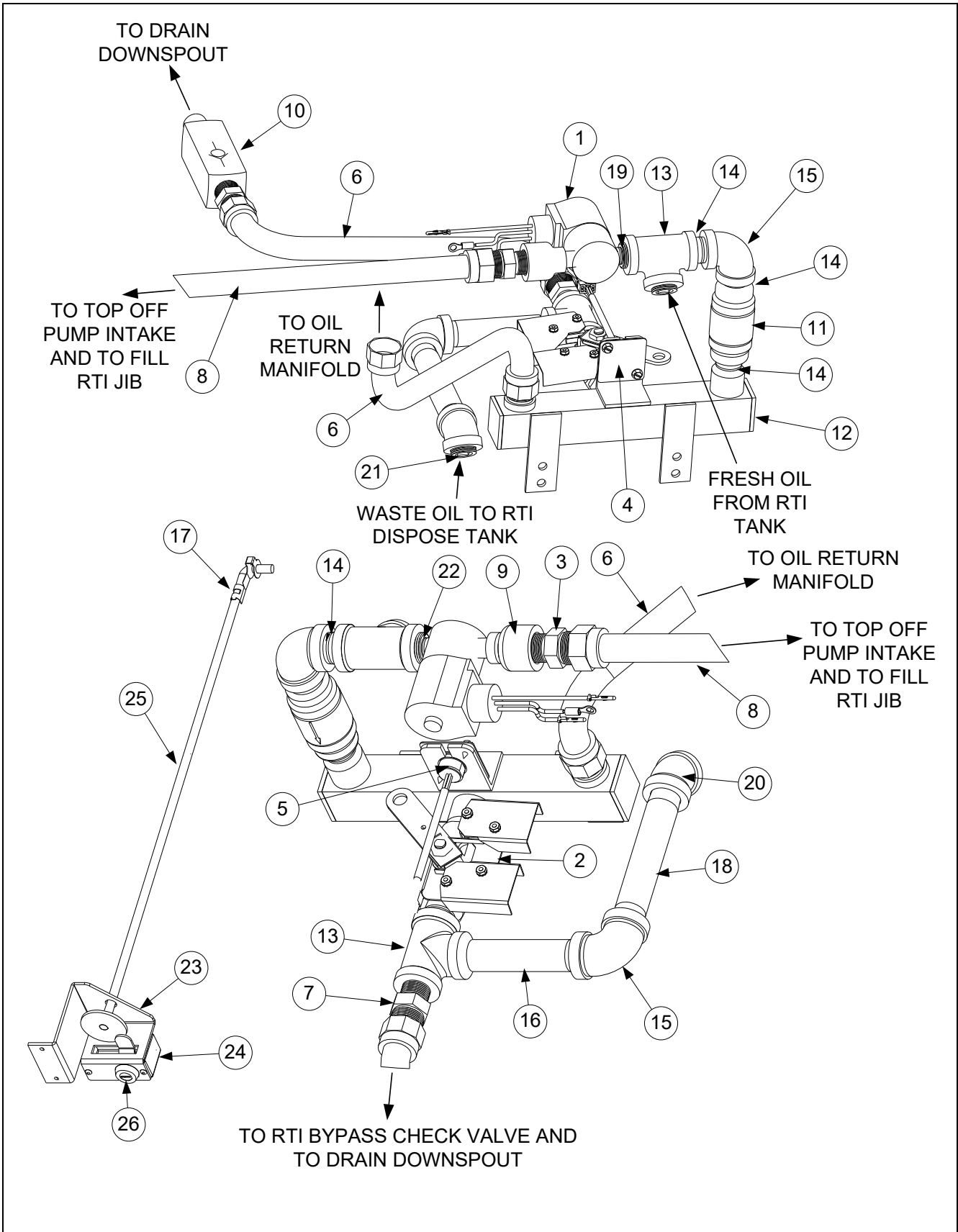
| ITEM | PART # | COMPONENT |
|------|-----------|--|
| | 1083754SP | Assembly, Heated Shortening |
| 1 | 1083753 | Box Assembly, Heated Shortening |
| 2 | 1083744 | Assembly, Heated Shortening Lid |
| 3 | 8103957 | Pan, Heated Shortening |
| 4 | 8074036 | Switch |
| 5 | 8100180 | Handle |
| √ 6 | 8261392 | O-Ring (Pkg. of 5) |
| 7 | 8130568 | Plug, 1/8-inch Socket Head Pipe |
| 8 | 8238319 | Bracket W/A, Shortening Suction |
| 9 | 8101669 | Adaptor, Female 7/8" OD x 1/2" |
| 10 | 8101055 | Flexline, 3/8" OD x 11.5-inch |
| 11 | 8071321 | Holder, Fuse |
| √ * | 8071555 | Fuse 5 Amp |
| 12 | 8130908 | Adapter, 1/2" NPT 90° |
| 13 | 8103820 | Fitting, Quick Connect Shurflo Pump |
| √ 14 | 8160782 | O-Ring, Viton #111 |
| 15 | 8075268 | Strips, Hot Box Heater with controller |
| * | 8071098 | Heater Strip Assembly, 240V, 25W 18" |
| * | 8071419 | Heater Strip Assembly, 240V, 45W 36" |
| * | 8071473 | Heater Strip Assembly, 240V, 70W 56" |

* Not illustrated.

√ Recommended parts.

1.11 Bulk Dispose and Fresh Oil

1.11.1 Bulk Dispose and Fresh Oil Manifold and Accessories

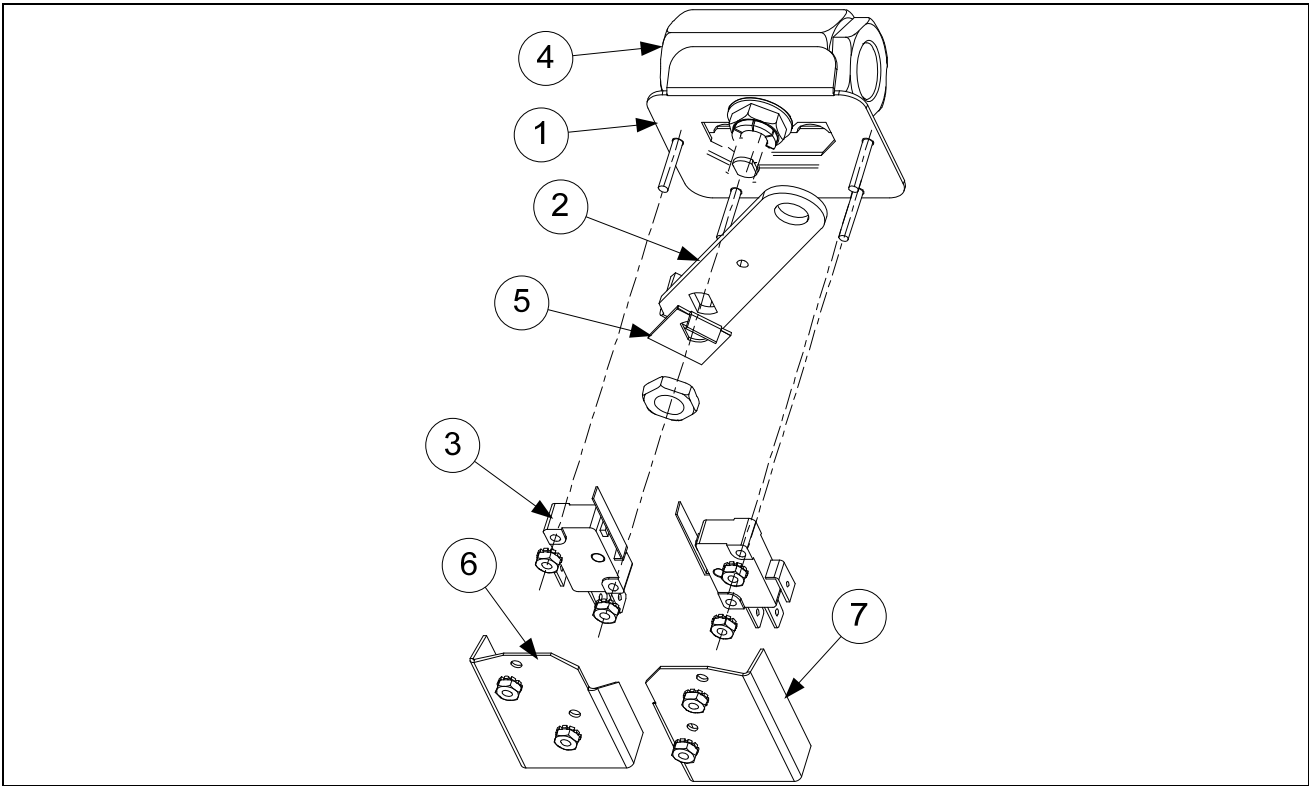


1.11.1 Bulk Dispose and Fresh Oil Manifold and Accessories cont.

| ITEM | PART # | COMPONENT |
|------|-----------|---|
| √ 1 | 1066830SP | Solenoid Assembly |
| 2 | 1080446SP | Valve, RTI Waste Assembly (see next page for parts) |
| 3 | 8101668 | Adaptor, Male 5/8" OD x 1/2" |
| 4 | 2205658 | Cover, RTI Dust Plug |
| 5 | 8075812 | Harness, Dispose/Pan SW/RTI |
| 6 | 8101057 | Flexline, 5/8" OD x 13-inch long |
| 7 | 8101668 | Adaptor, Male 5/8" OD x 1/2" |
| 8 | 8101069 | Flexline, 5/8" OD x 29.50-inch long (use item #6 for 2 vat units) |
| 9 | 8130555 | Reducer, Bell Fitting, 1/2" to 1/4" NPT BM |
| 10 | 8103531 | Valve, Check 20 PSI RTI bypass |
| 11 | 8104879 | Valve, Check 1/2" NPT 4 PSI RTI Manifold |
| 12 | 8104880 | Manifold, RTI |
| 13 | 8130003 | Tee, 1/2" x 1/2" x 1/2" BM |
| 14 | 8130022 | Nipple, 1/2" x Close NPY BM |
| 15 | 8130062 | Elbow, 1/2" Blk 90° |
| 16 | 8130093 | Nipple, 1/2" x 4-inch |
| 17 | 8090601 | Clip, Clevis Left Rod End |
| 18 | 8130281 | Nipple, 1/2" x 5-inch NPT |
| 19 | 8130304 | Bushing, 1/2" x 1/4" |
| 20 | 8130345 | Elbow, 1/2" Blk 45° |
| 21 | 8130463 | Plug, Pipe 1/2" NPT |
| 22 | 8130838 | Nipple, 1/4" NPT |
| | 1080466SP | Handle and Lock Assy, Elec LOV™ RTI |
| 23 | 2401651 | Mount, RTI Handle LOV Electric |
| 24 | 2208664 | Cover, Handle Lock |
| 25 | 8237142 | Handle, RTI Waste Pull |
| 26 | 8103587 | Lock and Key, RTI Waste Handle |

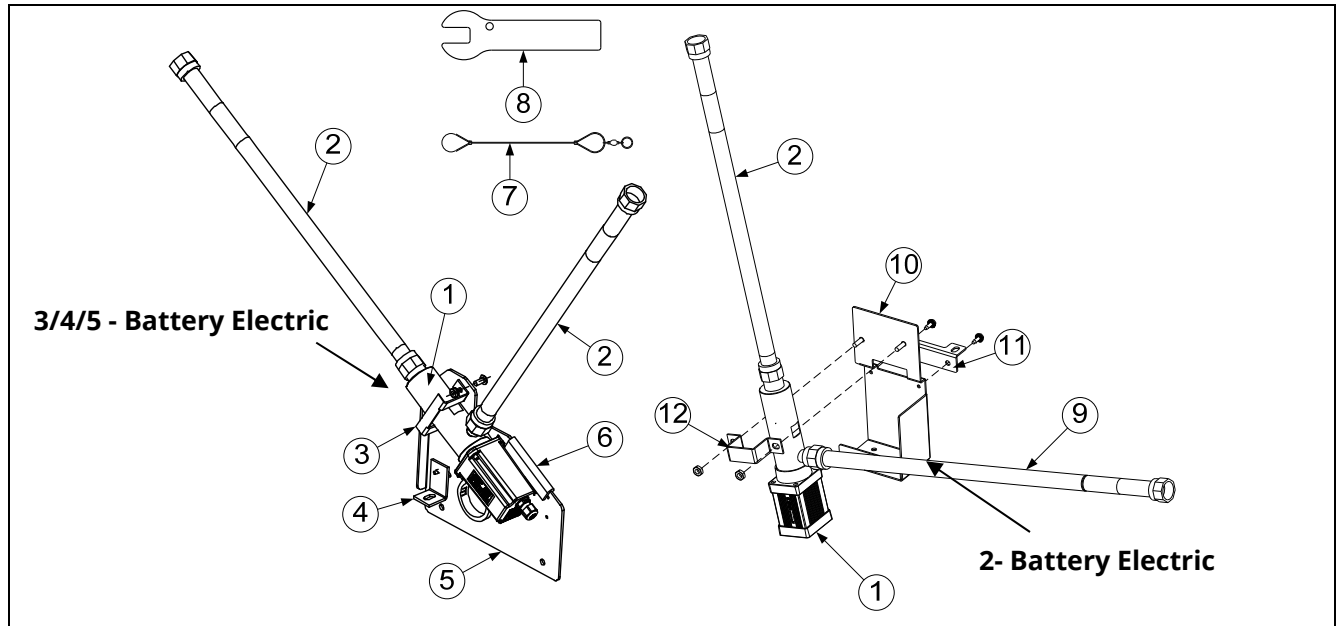
√ Recommended parts.

1.11.2 Bulk Dispose Waste Valve



| ITEM | PART # | COMPONENT |
|------|-----------|----------------------------|
| | 1080446SP | Valve, RTI Dispose Waste |
| 1 | 1080445 | Bracket, RTI Waste Valve |
| 2 | 2205615 | Handle, RTI Waste Valve |
| 3 | 8074936 | Microswitch, Gold Sealed |
| 4 | 8100278 | Valve, 1/2" Ball |
| 5 | 9002935 | Retainer, Nut Return Valve |
| 6 | 9012348 | Cover, DV Safety Switch |
| 7 | 9022348 | Cover, DV Safety Switch |

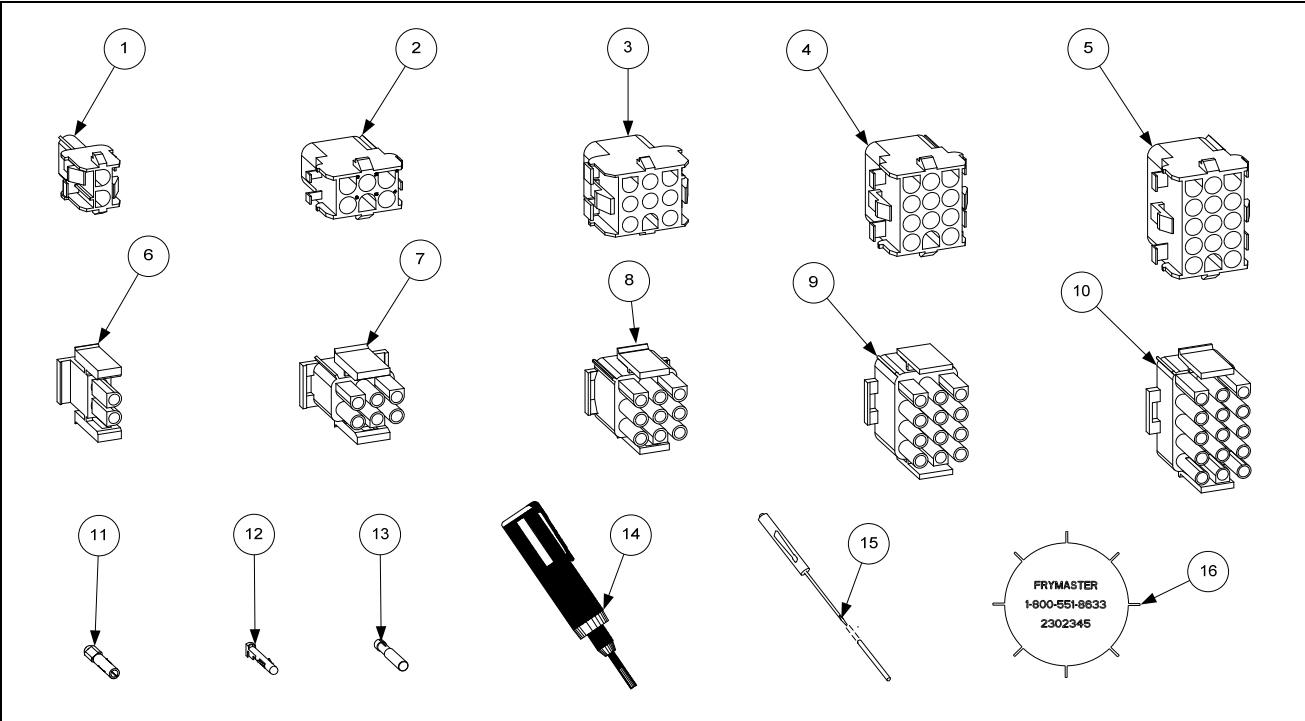
1.12 Oil Quality Sensor (OQS) and Associated Parts



| ITEM | PART # | COMPONENT |
|------|---------|--|
| | 8263588 | Kit, OQS FilterQuick Elec 2-Battery (Kit to add to existing LOV-T Electric Fryers) |
| | 8263565 | Kit, OQS FilterQuick Elec 3/4/5 Battery (Kit to add to existing LOV-T Electric Fryers) |
| 1 | 8263292 | Sensor, FilterQuick OQS Replacement |
| 2 | 8101369 | Flexline, 5/8" OD x 17.50-inch |
| 3 | 2401385 | Retainer, OQS Sensor FQ |
| 4 | 2401386 | Brace, OQS Sensor Mount |
| 5 | 2401438 | Mount, OQS Sensor FQ |
| 6 | 8122524 | Insulation |
| 7 | 8104167 | Lanyard, In-Line Filter |
| 8 | 2401086 | Wrench, Pre-Filter Cap |
| 9 | 8101400 | Flexline, 5/8" OD x 21-inch |
| 10 | 1086101 | Bracket Assy, EBRO Sensor |
| 11 | 2401035 | Support, EBRO Sensor Bracket |
| 12 | 2400924 | Strap, Bracket EBRO Sensor |
| * | 8238990 | Wrench, 1-1/16" (27mm) |
| * | 8238991 | Wrench, 1-1/16" (27mm) crows foot |

* Not illustrated.

1.13 Wiring Connectors, Pin Terminals and Power Cords



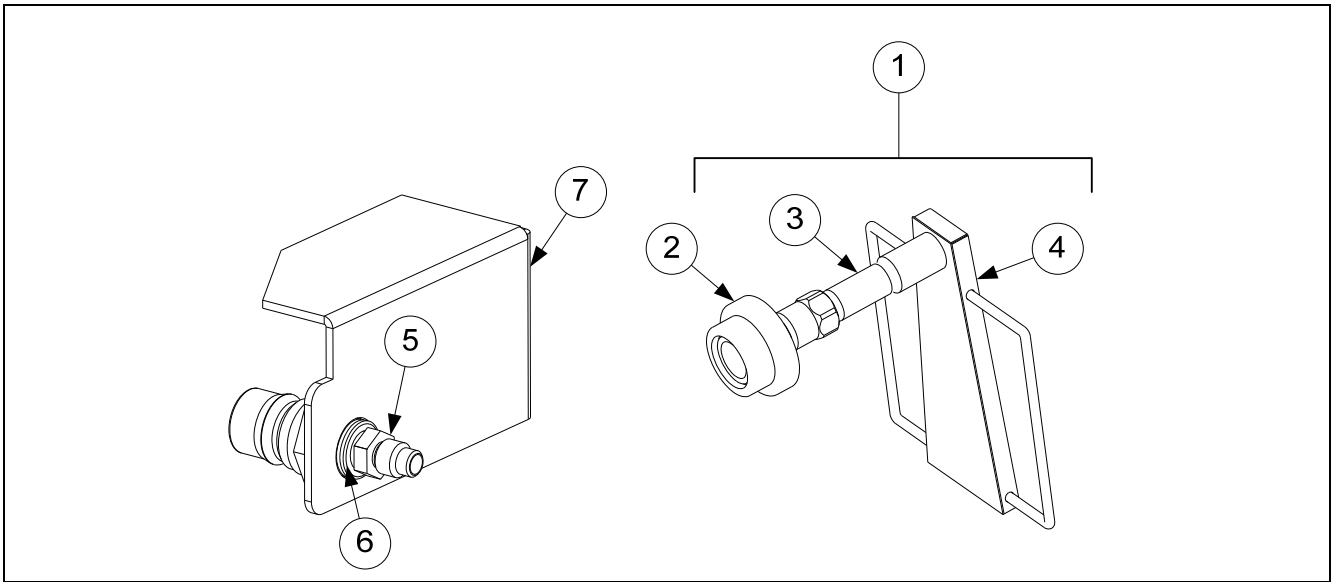
| ITEM | PART # | COMPONENT |
|-----------------------------|-----------|---|
| Power Cords | | |
| * | 8070154 | 100/120V-15A 3-wire, w/grounded plug |
| * | 8074317 | 100/208/240V-16A 3-Wire with Plug LOV CE Single Phase |
| * | 8071685 | 100/208/240V-18A 3-wire, w/o plug |
| * | 8074316 | 120V 5-wire, w/grounded plug LOV Single Phase |
| * | 8073817 | 208/240V 3-Phase 4-wire w/grounded plug |
| * | 8073836 | 208/240V 3-Phase 4-wire w/grounded plug 92" CE |
| * | 8075105 | 230/400V 3-Phase 4-wire w/grounded plug 105" CE 4 battery or larger |
| * | 8074668 | 208/240V 3-Phase 4-wire w/grounded plug 96" |
| * | 8073839 | 208/240V 3-Phase 4-wire w/grounded plug 96" |
| * | 8076329 | 220/250V 3-Phase 4-wire w/grounded plug 109" Australia |
| Connectors and Tools | | |
| 1 | 8071068 | 2-Pin Female |
| 2 | 8070158 | 6-Pin Female |
| 3 | 8070156 | 9-Pin Female |
| 5 | 8070159 | 12-Pin Female |
| 5 | 8070875 | 15-Pin Female |
| 6 | 8071067 | 2-Pin Male |
| 7 | 8070157 | 6-Pin Male |
| 8 | 8070155 | 9-Pin Male |
| 9 | 8070160 | 12-Pin Male |
| 10 | 8070804 | 15-Pin Male |
| 11 | 8261341 | Terminal, Female Split Pin (Pkg of 25) |
| 12 | 8261342 | Terminal, Male Split Pin (Pkg of 25) |
| 13 | 8072518 | Plug, Mate-N-Lock (Dummy Pin) |
| 14 | 8070928 | Extract Tool Pin Pusher |
| 15 | 8064855 | Pin Pusher Screwdriver Assembly |
| 16 | 2302345 | SMT Pin Extractor |
| * | 8074660PK | SMT Pin Service Repair Kit |

* Not illustrated.

1.14 Fasteners

| ITEM | PART # | COMPONENT |
|------|---------|---|
| * | 8090429 | Bolt, ¼-inch – 20 x 2.00-inch Hex Head ZP Tap |
| * | 8090131 | Bolt, ¼-inch -20 x ¾-inch Hex |
| * | 8091020 | Cap Screw, 5/16-inch-18 5.50" NC Hex (<i>Connects pump to motor.</i>) |
| * | 8090448 | Clip, Tinnerman |
| * | 8261366 | Nut, 4-40 Keps Hex (Pkg. of 25) (8090237) |
| * | 8261358 | Nut, 6-32 Keps Hex (Pkg. of 25) (8090049) |
| * | 8090247 | Nut, 8-32 Keps Hex |
| * | 8261376 | Nut, 10-32 Keps Hex (Pkg. of 10) (8090256) |
| * | 8090766 | Nut, 10-32 Keps Hex SS |
| * | 8090581 | Nut, ½ NPT Locking |
| * | 8090020 | Nut Cap 10-24 NP |
| * | 8261372 | Nut Grip ¼-inch ¼-20 Hex NP (Pkg. of 10) (8090059) |
| * | 8090417 | Nut Flange ¼-inch ¼-20 Serr |
| * | 8090535 | Nut, "T" ¼-inch-20 x 7/16 SS |
| * | 8090495 | Nut, ¼-inch – 20 Press |
| * | 8090540 | Nut, Lock ½-inch-13 Hex 2-Way ZP |
| * | 8261359 | Screw, 4-40 x ¾-inch Slotted Round Head (Pkg. of 25) (8090354) |
| * | 8261365 | Screw, 6-32 x ¾-inch Slot Head (Pkg. of 25) (8090095) |
| * | 8090357 | Screw, 6 x ¾-inch Phillips Head NP |
| * | 8090359 | Screw, 8 x ¼-inch Hex Washer Head |
| * | 8090360 | Screw, 8 x ¾-inch Hex Washer Slot Head |
| * | 8261371 | Screw, 8 x ½-inch Hex Head ZP (Pkg. of 25) (8090361) |
| * | 8090364 | Screw, 8 x ⅝-inch Hex Washer Head ZP |
| * | 8090518 | Screw, 8-32 x ¾-inch Hex Washer Slotted Head SS |
| * | 8090104 | Screw, 8-32 x ½-inch Slotted Head ZP |
| * | 8261363 | Screw, 8-32 x ½-inch NP (Pkg. of 25) (809-0103) |
| * | 8261360 | Screw, 10-24 x 5/16-inch Round Slot Head ZP (Pkg. of 25) (8090024) |
| * | 8261330 | Screw, 10-32 x ¾-inch Slot Head SS (Pkg. of 25) (8090117) |
| * | 8091003 | Screw, 10-32 x ¾-inch Hex Trim Head SS |
| * | 8090270 | Screw, 10-32 x ½-inch Phillips Head ZP |
| * | 8261375 | Screw, 10-32 x ¾-inch Hex Trim Head SS (Pkg. of 5) (8090401) |
| * | 8091000 | Screw, 10-32 x 1¼-inch Hex Sck C/S |
| * | 8261374 | Screw, 10 x ½-inch Hex Head (Pkg. of 25) (8090412) |
| * | 8090266 | Screw, 10 x ½-inch Phillips Head ZP |
| * | 8090434 | Screw, 10 x ¾-inch Hex Washer Head NP |
| * | 8090123 | Screw, 10 x ¾-inch Slot Head |
| * | 8261389 | Screw, 1/4-20 x ¾-inch Hex Head ZP (Pkg. of 10) (8090131) |
| * | 8090582 | Washer ½ NPT Locking |
| * | 8090184 | Washer, #10 LK ZP |
| * | 8090190 | Washer, .625 X .275 X 40 Flat SS |
| * | 8090191 | Washer, Lock ¼ Spring ZP |
| * | 8090193 | Washer, Flat ¼ Nylon |
| * | 8090194 | Washer, Flat 5/16 ZP |

1.15 Itto Can /Front Dispose Components Japan only



| ITEM | PART # | COMPONENT |
|------|---------|------------------------------------|
| 1 | 1086183 | Faucet, Itto Can Dispose Assembly |
| 2 | 8100490 | Quick Disconnect ½-inch Female |
| 3 | 8130460 | Nipple, ½" x 3.00 inch NPT BM Pipe |
| 4 | 8238988 | Faucet, Itto Can Dispose |
| 5 | 8103270 | Fitting, ⅜" Flare x ¼" NPT |
| 6 | 8130304 | Bushing, ½" x ¼" |
| 7 | 8239008 | Mount, Front Dispose |

* Not illustrated. ✓ Recommended parts.

THIS PAGE INTENTIONALLY LEFT BLANK

Frymaster[®]

FRYMASTER
8700 LINE AVENUE, SHREVEPORT, LA 71106-6800

800-551-8633
318-865-1711
WWW.FRYMASTER.COM
EMAIL: FRYSERVICE@WELBILT.COM



Welbilt offers fully-integrated kitchen systems. Welbilt's portfolio of award-winning brands includes Cleveland™, Convotherm®, Crystal Tips®, Dean®, Delfield®, Fabristeel®, Frymaster®, Garland®, Inducs®, Koldtech®, Kolpak®, Lincoln®, McCann's™, Merco®, Merrychef®, Multiplex®, RDI®, SerVend™, SunFire®, U.S. Range™, and WMaxx™. Supported by service brands: FitKitchen®, kitchen systems; and KitchenConnect®, cloud-based open platform.

Bringing innovation to the table • welbilt.com

©2023 Frymaster LLC. except where explicitly stated otherwise. All rights reserved. Continuing product improvement may necessitate change of specifications without notice.

Part Number FRY_P_8197342 10/2023