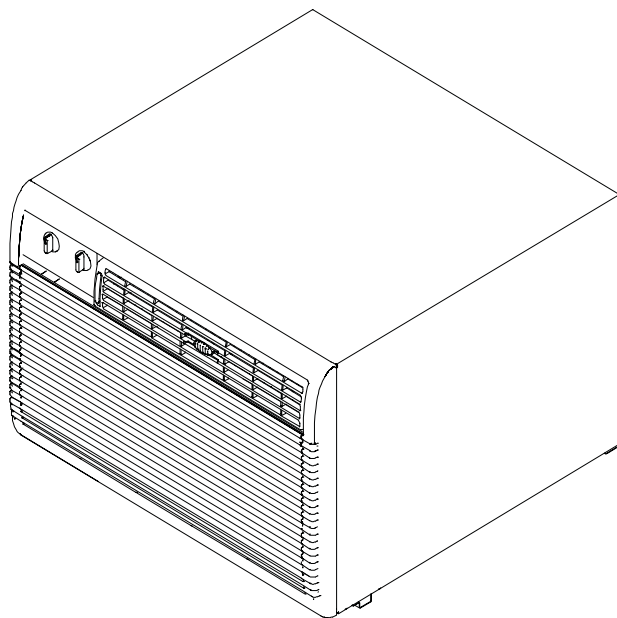


# FACTORY PARTS CATALOG ROOM AIR CONDITIONER

*Frigidaire*



PRODUCT NO.	BASE MODEL NO.	VOLTS	BTU-COOLING
FAC053L7A1	FAC053L7A	115	5200 BTU
<b>MARKET</b>			
USA			

WIRING DIAGRAM - # 309107703  
OWNER'S GUIDE - # 309000823  
ENERGY GUIDE - # 309367418

**Electrolux**

ELECTROLUX HOME PRODUCTS, INC  
P.O.BOX 212378, AUGUSTA, GA 30917

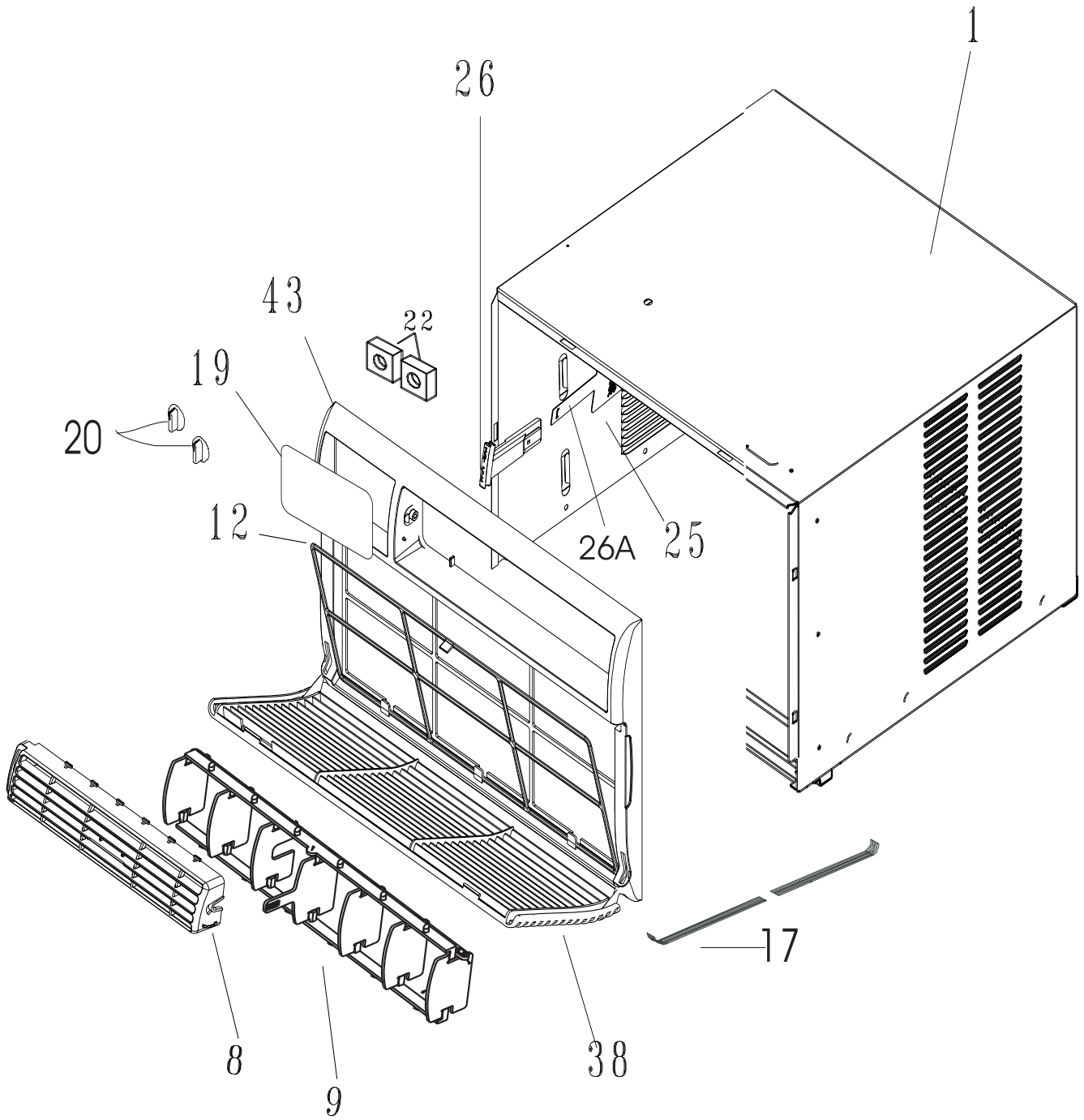
Publication No.  
5995367769  
020308  
-EN/SERVICE /KSC  
345

**ROOM AIR CONDITIONER**

**Model No.**  
**FAC053L7A1**

©2002 Electrolux Home Products, Inc.  
All rights reserved

CABINET FRONT AND WRAPPER

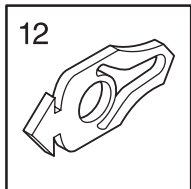
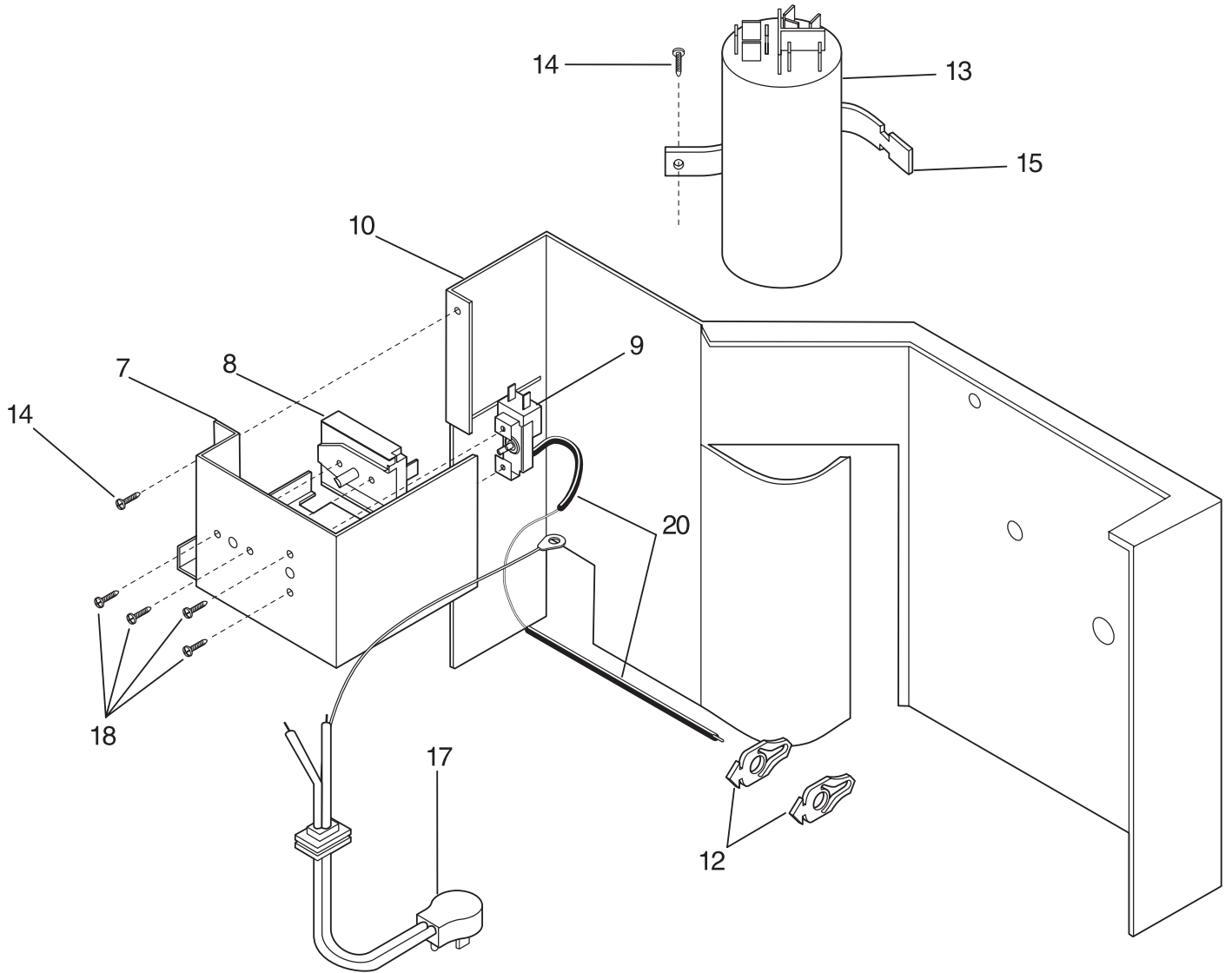


P40V2030

## CABINET FRONT AND WRAPPER

POS. NO	PART NO	DESCRIPTION
1	309643602	Cabinet
*	5303303691	Screw,truss head ,8-18AB x 0.375 ,w/nibs
8	309640204	Louver Assy,Includes 8 & 9
8	309639302	* Louver,horizontal
9	309647201	* Louver,vertical ,with link
12	309343501	Filter-air,7.12 x 17.31 ,no frame
17	309640104	Front-cabinet,4 way ,complete assy
*	3015312	Screw,8-18AB x 0.500
19	309342904	Dial Plate
20	309306810	Knob-control,rotary
22	5303001775	Spacer,dial plate
25	309328603	Door,fresh air vent
26	309638201	Handle,vent door
26A	309330201	Detent-vent
38	309646301	Panel,cabinet front
43	309646401	Frame,cabinet front
*	309367418	Energy Guide,FAC053L7A1

CONTROLS



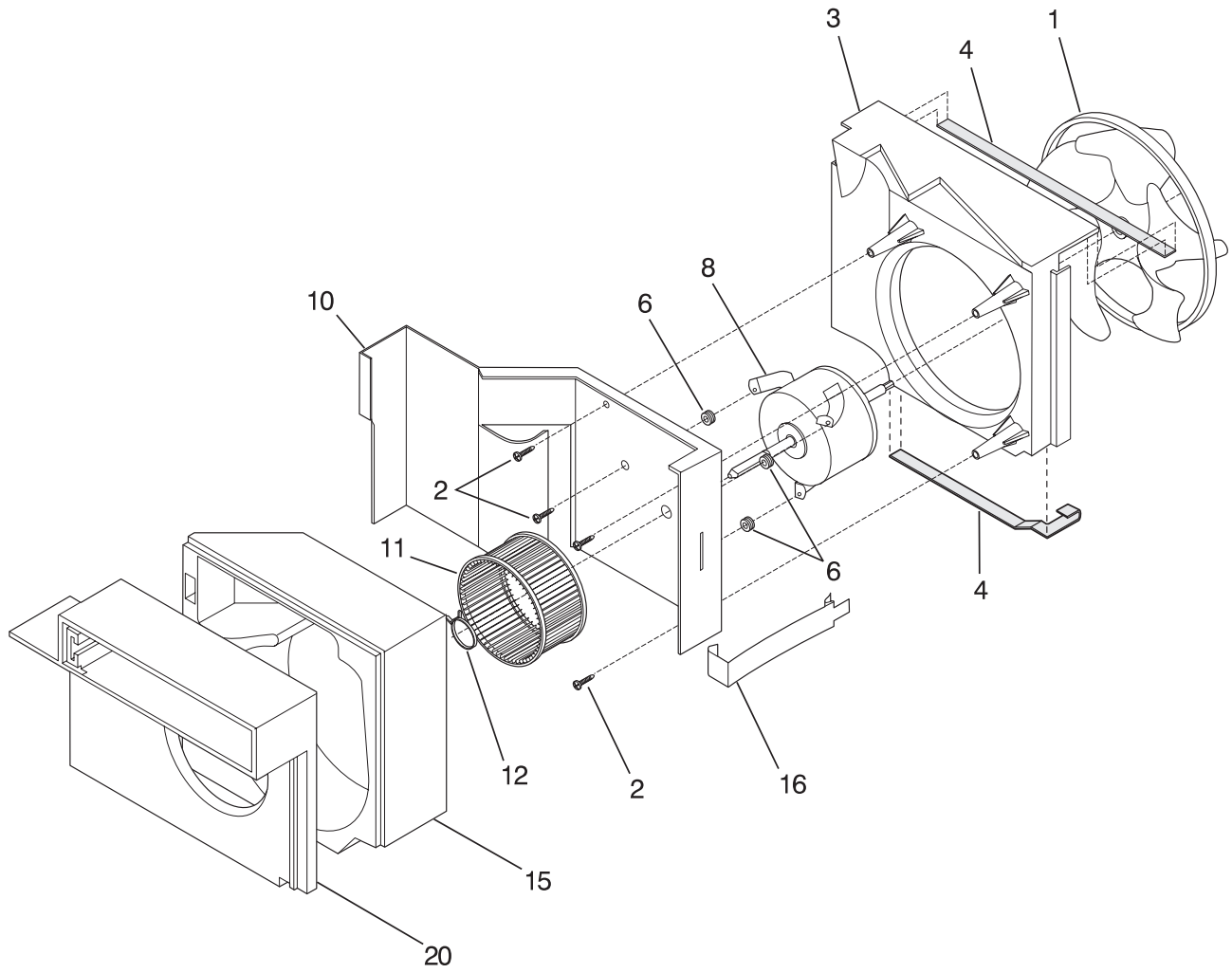
P40F2027

CONTROLS

---

POS. NO	PART NO	DESCRIPTION
7	309643802	Control Box
8 #	5303323284	Switch,selector ,7 posn,3 speed
9 #	5304402838	Control,temperature
10	309643702	Bulkhead
10*	309111201	Grommet,wire protector
12	309101202	Clip,retainer ,temp sensor ,(2)
13 #	5304426655	Capacitor,250 V ,35+4 mfd
14	3015312	Screw,8-18AB x 0.500
15	309351901	Strap,capacitor mtg.
17 #	309343101	Cord-electric power,18 AWG ,115 V
18	5303007754	Screw,6-32 x 0.188
20	5304417582	Sleeve,temp sensor ,6 in.

AIR HANDLING PARTS

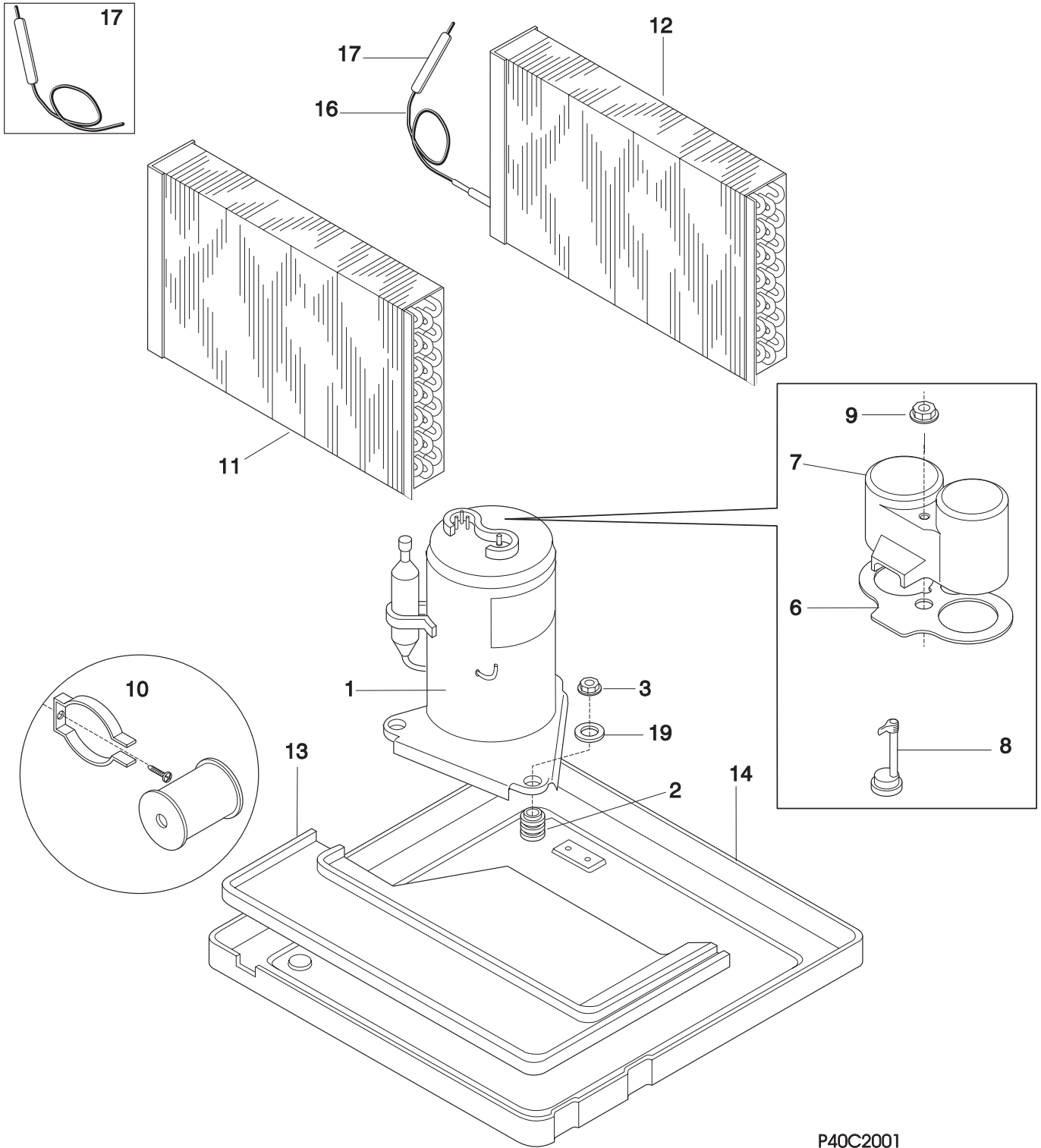


P40M2006

## AIR HANDLING PARTS

POS. NO	PART NO	DESCRIPTION
1 #	309646202	Fan Blade,with clamp
2	3202975	Screw,10-16AB x 0.72 ,square drive
3	309643901	Housing,fan shroud
4	5303303759	Seal,bottom
4	5304421913	Seal,top
6	08007481	Nut,Keps ,motor mtg ,(4)
8 #	309645002	Motor,fan
10	309643702	Bulkhead
11 #	309643302	Blower Wheel,8mm hub
12	327161302	Clamp,blower wheel mt ,compression
15	309642901	Housing,blower scroll ,Extended
16	309100201	Clip,evap/bulkhead
20	309643004	Plate,housing/scroll

COMPRESSOR PARTS



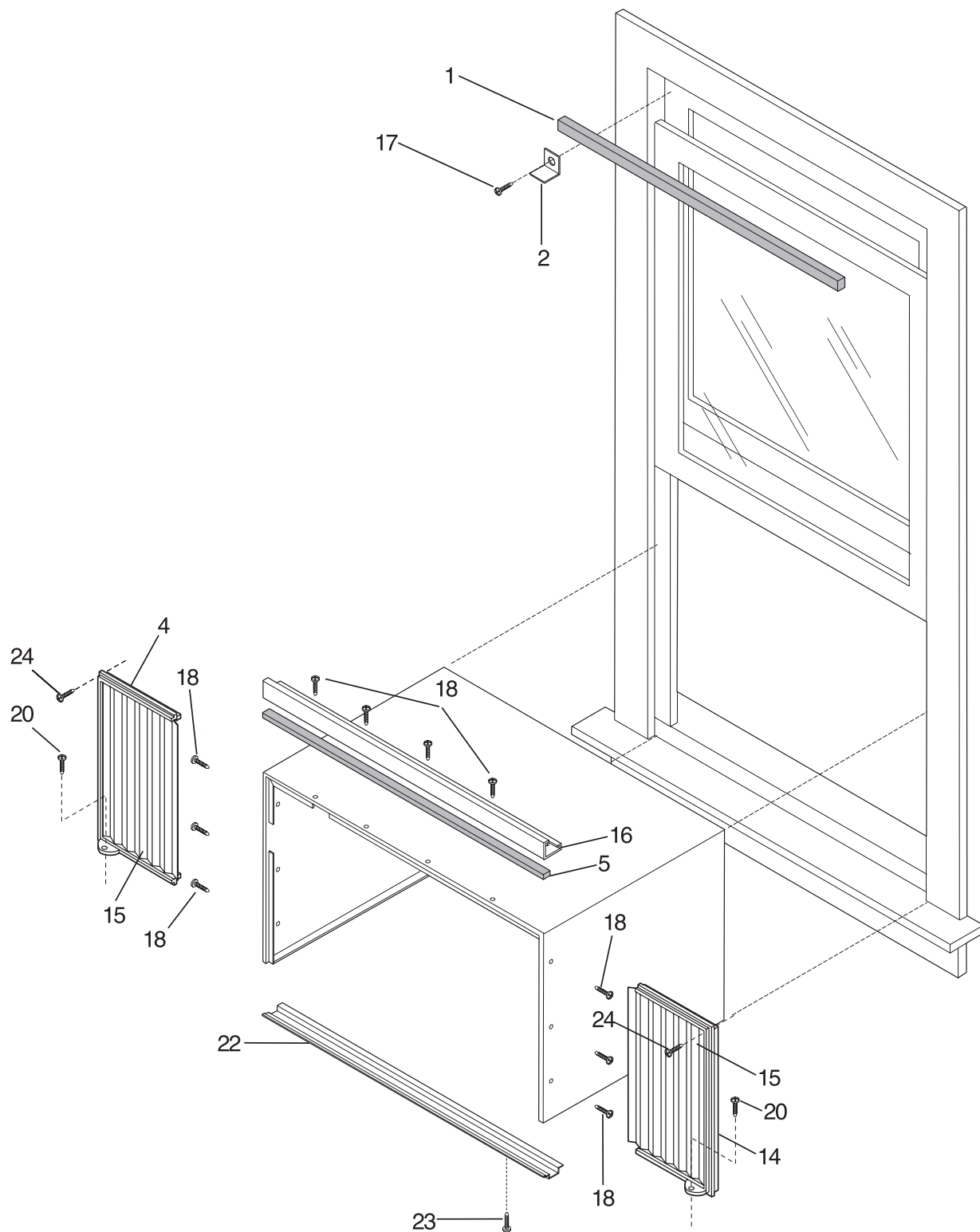
P40C2001

COMPRESSOR PARTS

---

POS. NO	PART NO	DESCRIPTION
1 #	309616915	Compressor
2	5303283877	Grommet,compressor mtg ,(3)
3	5308006948	Nut,compressor mtg ,(3)
6	3201668	Gasket,terminal cover
7	5304405245	Cover,compr terminal
8 #	5303311029	Overload Protector
9	3201670	Nut,terminal cover
10 #	5303317601	Start Assist Kit,compressor
11 #	309637507	Evaporator
12 #	309637605	Condenser
13 #	309642801	Tray,evap drip
14	309644003	Base,compressor mt. ,with studs
16 #	5304408716	Capillary Tube,50 inch long
17 #	<a href="#">5300265301</a>	Drier-filter,service kit
19	5303002664	Washer,compressor mtg
19*	309112501	Washer,metallic

WINDOW MOUNTING PARTS



P40A1001

## WINDOW MOUNTING PARTS

POS. NO	PART NO	DESCRIPTION
1	<a href="#">5304407729</a>	Seal,window stuffer
2	5303211056	Bracket,sash lock
4	309644901	Frame Extension Kit,accordian ,LH & RH ,includes 4 & 14
4	5304414120	Frame,cab extension ,LH
5	08016226	Seal,top rail/cab
14	5304414121	Frame,cab extension ,RH
15	309626504	Closure,accordian type ,window mount
16	5304417362	Rail,retainer ,top
17	3002803	Screw,wood, type 17 ,10-12 x 0.750
18	5303303691	Screw,truss head ,8-18AB x 0.375 ,w/nibs
20	<a href="#">5304411997</a>	Screw,8-18 x 0.750
22	5304403252	Rail,retainer ,bottom
23	3001806	Screw,23(T) ,10-32 x 0.310
24	5308002974	Screw,wood,type 17 ,8-15 x 0.500

309107703 SUB.  
1

