

Parts Catalog



GPC16

Pasta Cooker

Model: GPC16

5/5/2023 Rev. C

IMPORTANT!

TO EXPEDITE SHIPMENT OF PARTS, ALWAYS SPECIFY MODEL, REV,
PART NUMBER, AND SERIAL NUMBER OF UNIT.

GLOBE FOOD EQUIPMENT COMPANY

2215 East River Road
Dayton, Ohio 45439

Parts Department

Toll Free 1-800-745-6238 · Fax (937) 290-0585

E-Mail: info@globefoodequip.com

Website: www.globefoodequip.com

Not for resale

Table of Contents

Description

Page

GPC16 Control Box Components

4

GPC16 Base Components

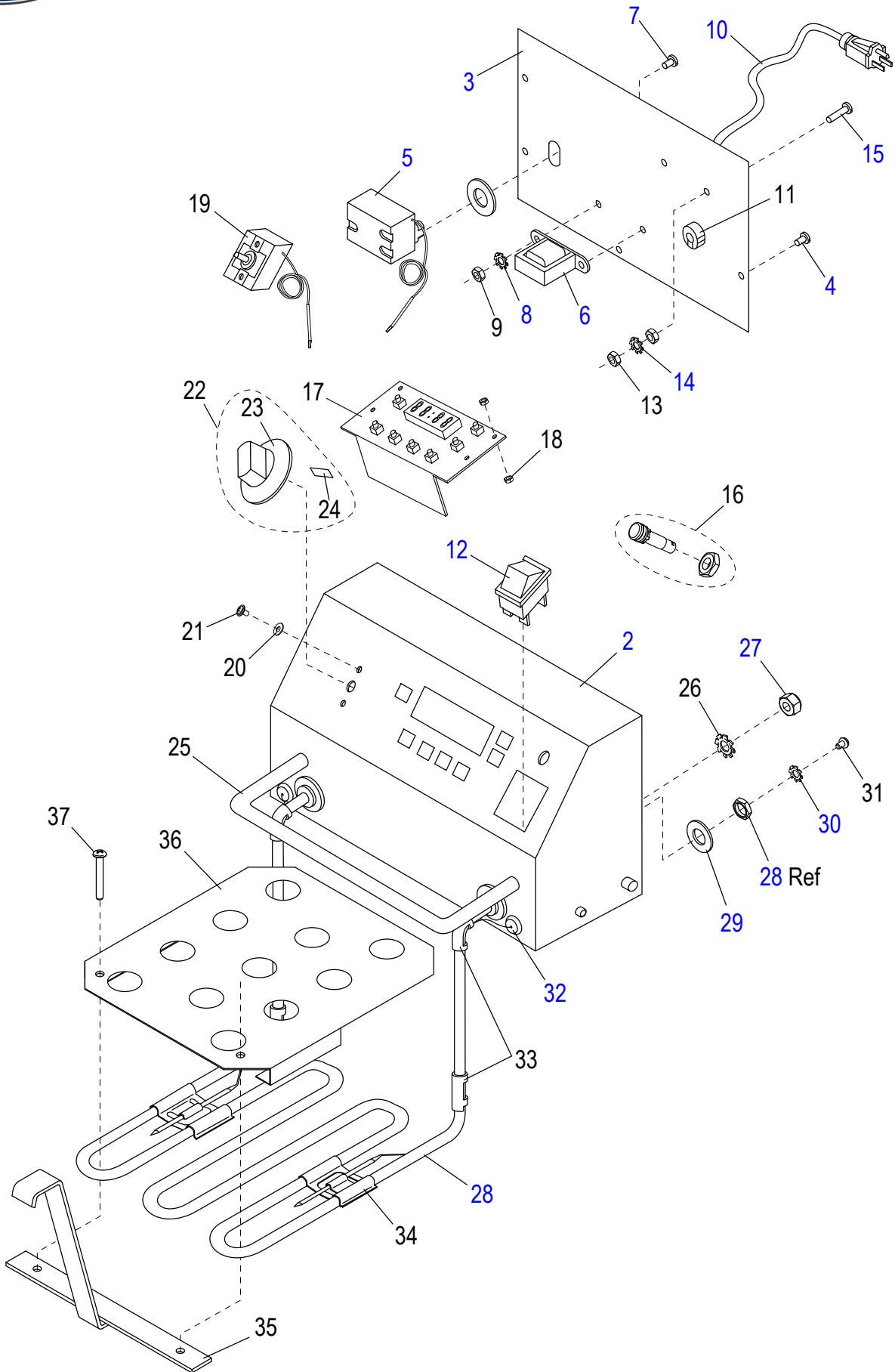
6

GPC16 Wiring Diagram

8



GPC16 Control Box Components



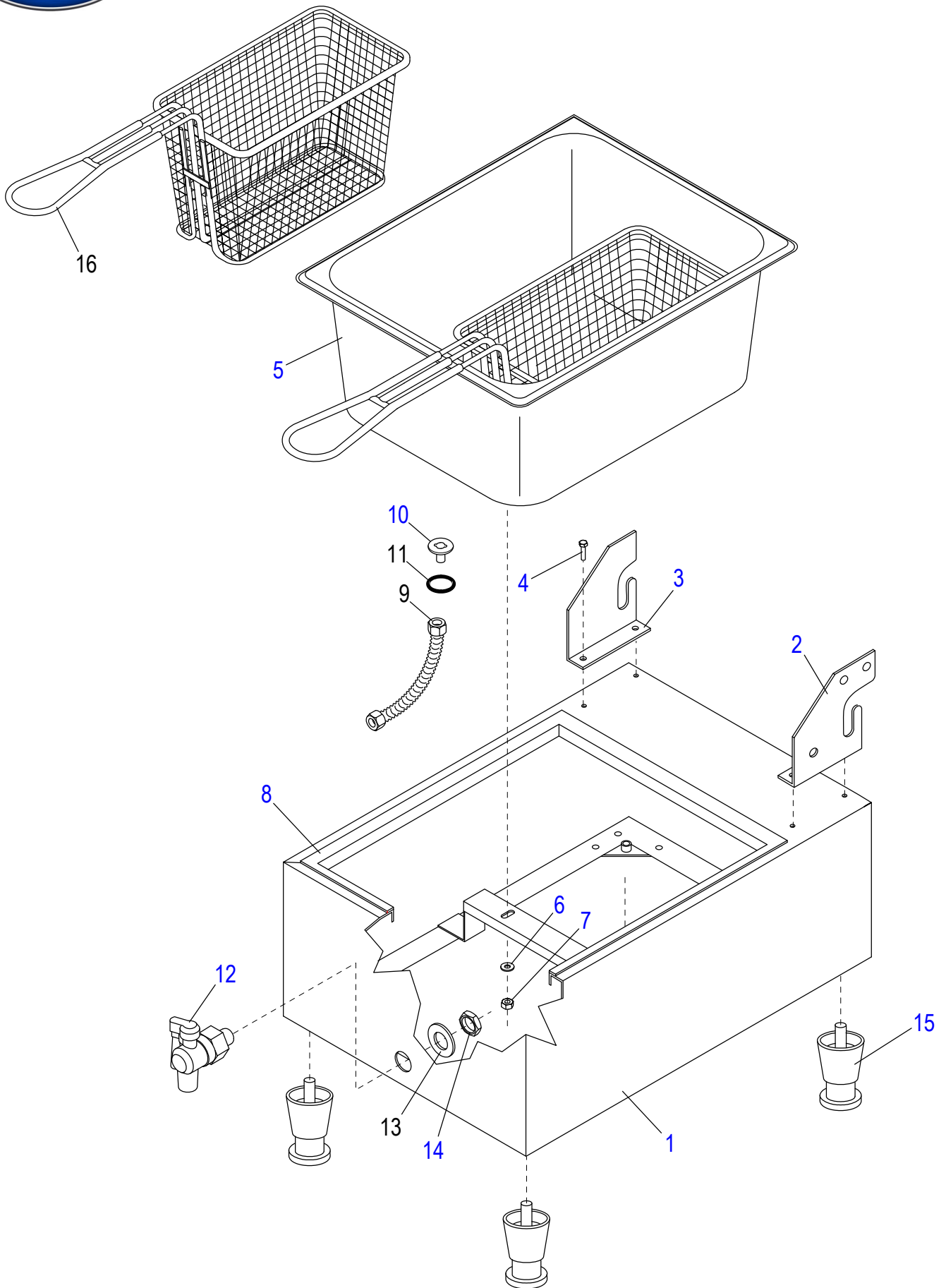


GPC16 Control Box Components

| Item | Part Number | Description | Qty | Serial Number |
|------|--------------|---|-----|---------------|
| 1 | U00576 | Control Box Assembly | 1 | |
| 2 | | Control Box | 1 | |
| 3 | | Back Cover | 1 | |
| 4 | H00571 | Screw M4-.7 x 8mm Phillips Pan Hd Cover | 5 | |
| 5 | U00577 | Thermal Reset | 1 | |
| 6 | U00578 | Transformer | 1 | |
| 7 | H00571 | Screw M4-.7 x 8mm Phillips Pan Hd Cover | 2 | |
| 8 | H00033 | Washer M4 Ext. Tooth Element Connection | 2 | |
| 9 | H00034 | Hex Nut, M4 - Zn | 2 | |
| 10 | U03021205013 | Power Cord (240V) | 1 | |
| 11 | U00579 | Strain Relief | 1 | |
| 12 | U03041215027 | Power Switch | 1 | |
| 13 | H00034 | Hex Nut, M4 - Zn | 2 | |
| 14 | H00033 | Washer M4 Ext. Tooth Element Connection | 1 | |
| 15 | H00031 | Phillips Pan Head Screw, M4 x 16mm - Zn | 1 | |
| 16 | U03091240006 | Indicator Light | 1 | |
| 17 | U01781 | Timer Assembly (220V) | 1 | |
| 18 | H00572 | Nut M2.5-.45 Nylon Timer Mounting | 8 | |
| 19 | U00580 | Thermostat | 1 | |
| 20 | H00573 | Washer M5 Flat Nylon Thermostat | 2 | |
| 21 | H00024 | Phillips Pan Washer Head Screw, M4 x 4mm - Zn | 2 | |
| 22 | U01033 | Knob Kit (Incl. Items 23 & 24) | 1 | |
| 23 | | Thermostat Knob | 1 | |
| 24 | | Spring Plate | 1 | |
| 25 | | Control Box Handle | 1 | |
| 26 | H00033 | Washer M4 Ext. Tooth Element Connection | 2 | |
| 27 | X08015 | Nut M6 Hex - Nylon Insert | 2 | |
| 28 | U00582 | Control Box Cover | 1 | |
| 29 | U00591 | Heating Element Washer | 2 | |
| 30 | H00033 | Washer M4 Ext. Tooth Element Connection | 2 | |
| 31 | H00024 | Phillips Pan Washer Head Screw, M4 x 4mm - Zn | 2 | |
| 32 | U02121165001 | Stuffing Nut | 2 | |
| 33 | U01051025128 | Wire Clamp | 2 | |
| 34 | U01051025117 | Tube Clamp | 2 | |
| 35 | U00584 | Element Handle | 1 | |
| 36 | U01051025555 | Element Cover | 1 | |
| 37 | H00031 | Phillips Pan Head Screw, M4 x 16mm - Zn | 2 | |
| 38 | U01740 | Wiring Kit (Not Shown) | 1 | |
| 39 | U01808 | Overlay (Not Shown) | 1 | |



GPC16 Base Components





GPC16 Base Components

| Item | Part Number | Description | Qty | Serial Number |
|------|--------------|---|-----|---------------|
| 1 | | Pasta Cooker Base | 1 | |
| 2 | | Electrical Box Mtg Bracket, RH | 1 | |
| 3 | | Electrical Box Mtg Bracket, LH | 1 | |
| 4 | H00575 | Screw M4-.7 x 10mm Hex Hd | 4 | |
| 5 | U00586 | Pan | 1 | |
| 6 | M035 | Flat Washer ID 6.5 OD 12 TH 1.5 mm Zinc | 2 | |
| 7 | M034 | Hex Nut M6x1.0 OD 10 mm TH 5 mm Zinc | 2 | |
| 8 | U00587 | Pan Gasket | 1 | |
| 9 | U00594 | Corrugated Tube with Nuts | 1 | |
| 10 | U00595 | Pan Flange | 1 | |
| 11 | U00596 | Drain Seal | 1 | |
| 12 | U00588 | Drain Spigot | 1 | |
| 13 | U00599 | Spigot Washer | 1 | |
| 14 | U00600 | Spigot Nut | 1 | |
| 15 | U01021005002 | Foot | 4 | |
| 16 | MINIBASKET | Basket | 4 | |
| 16 | PASTABASKET | | 2 | |



GPC16 Wiring Diagram

