

Parts Catalog



SP40P

MIXERS

MODEL: SP40P

03-27-06

IMPORTANT!

TO EXPEDITE SHIPMENT OF PARTS, ALWAYS SPECIFY MODEL, REV,
PART NUMBER, AND SERIAL NUMBER OF MIXER.

GLOBE FOOD EQUIPMENT COMPANY

P.O. Box 3209

Dayton, Ohio 45401

Parts Department

Toll Free 1-800-745-6238 · Fax (937) 290-0585

E-Mail: globeinfo@globeslicers.com

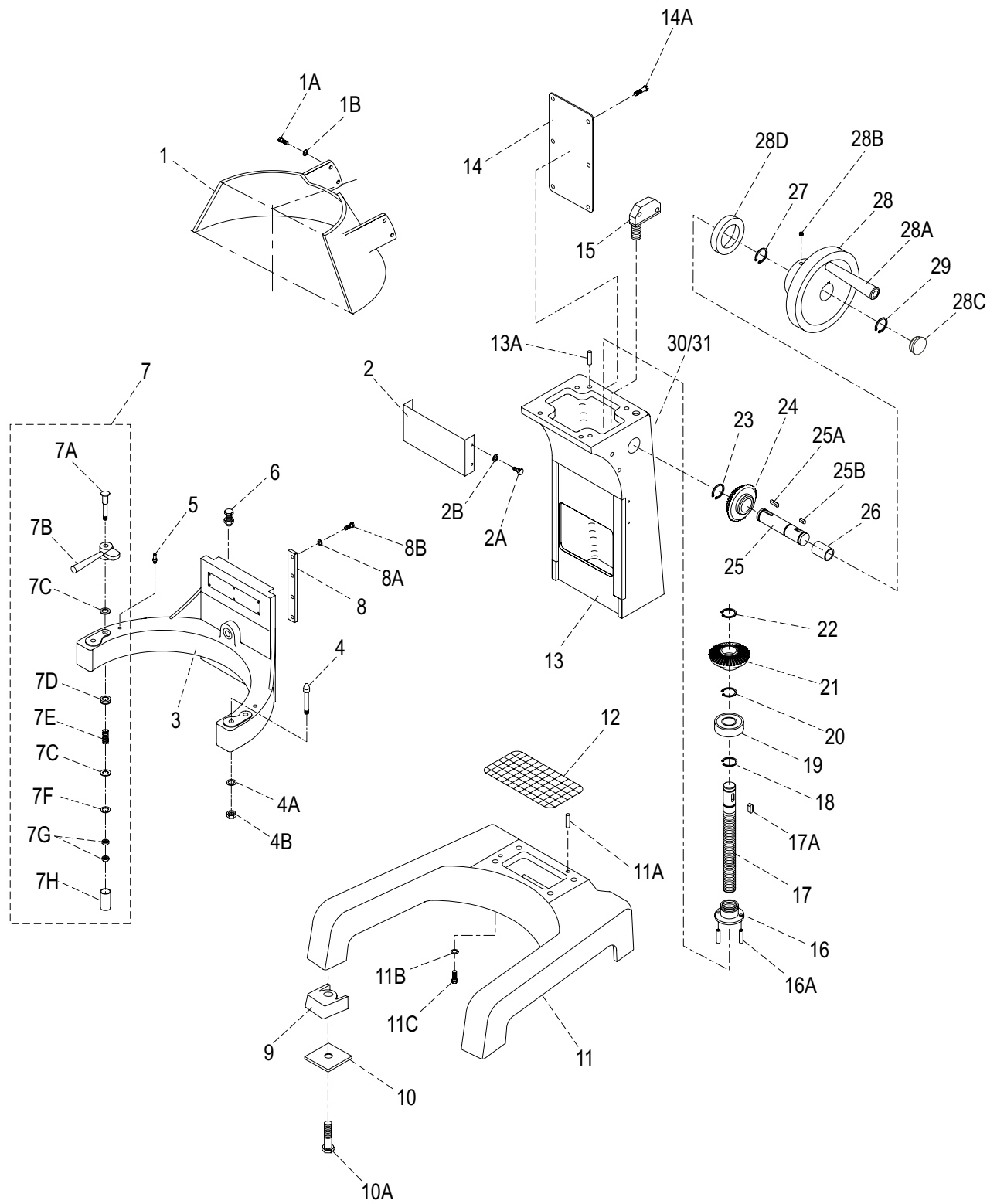
Website: www.globeslicers.com

Not for resale

TABLE OF CONTENTS

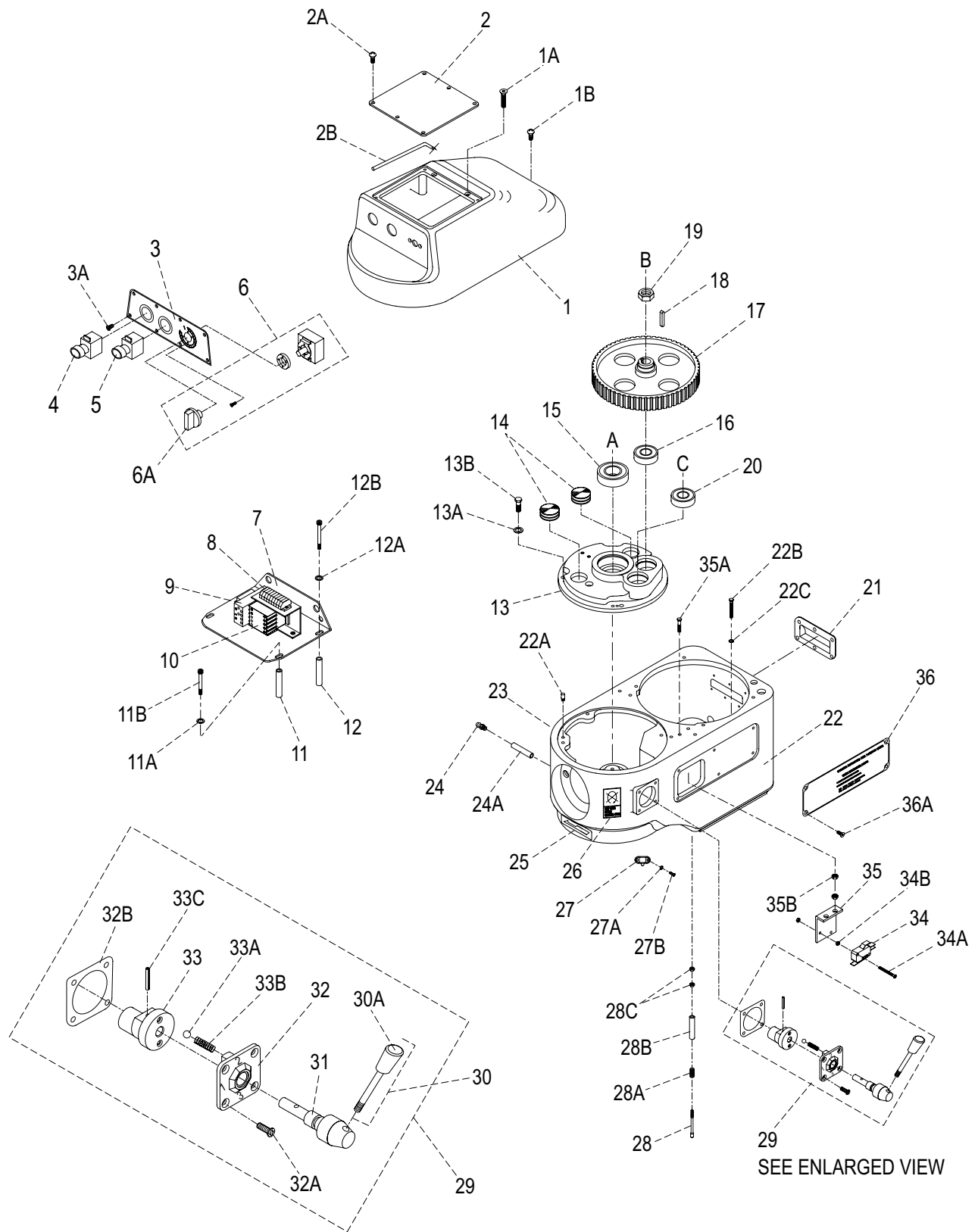
<u>BASE</u>	<u>1 - 2</u>
<u>HEAD</u>	<u>3 - 4</u>
<u>HUB</u>	<u>5</u>
<u>PLANETARY</u>	<u>6</u>
<u>GEAR</u>	<u>7 - 8</u>
<u>MOTOR</u>	<u>9</u>
<u>WIRING DIAGRAM 220 / 1 PHASE</u>	<u>10</u>
<u>WIRING DIAGRAM 208 / 3 PHASE</u>	<u>11</u>
<u>SCHEMATIC 220 / 1 PHASE</u>	<u>12</u>
<u>SCHEMATIC 208 / 3 PHASE</u>	<u>13</u>

SP40P BASE



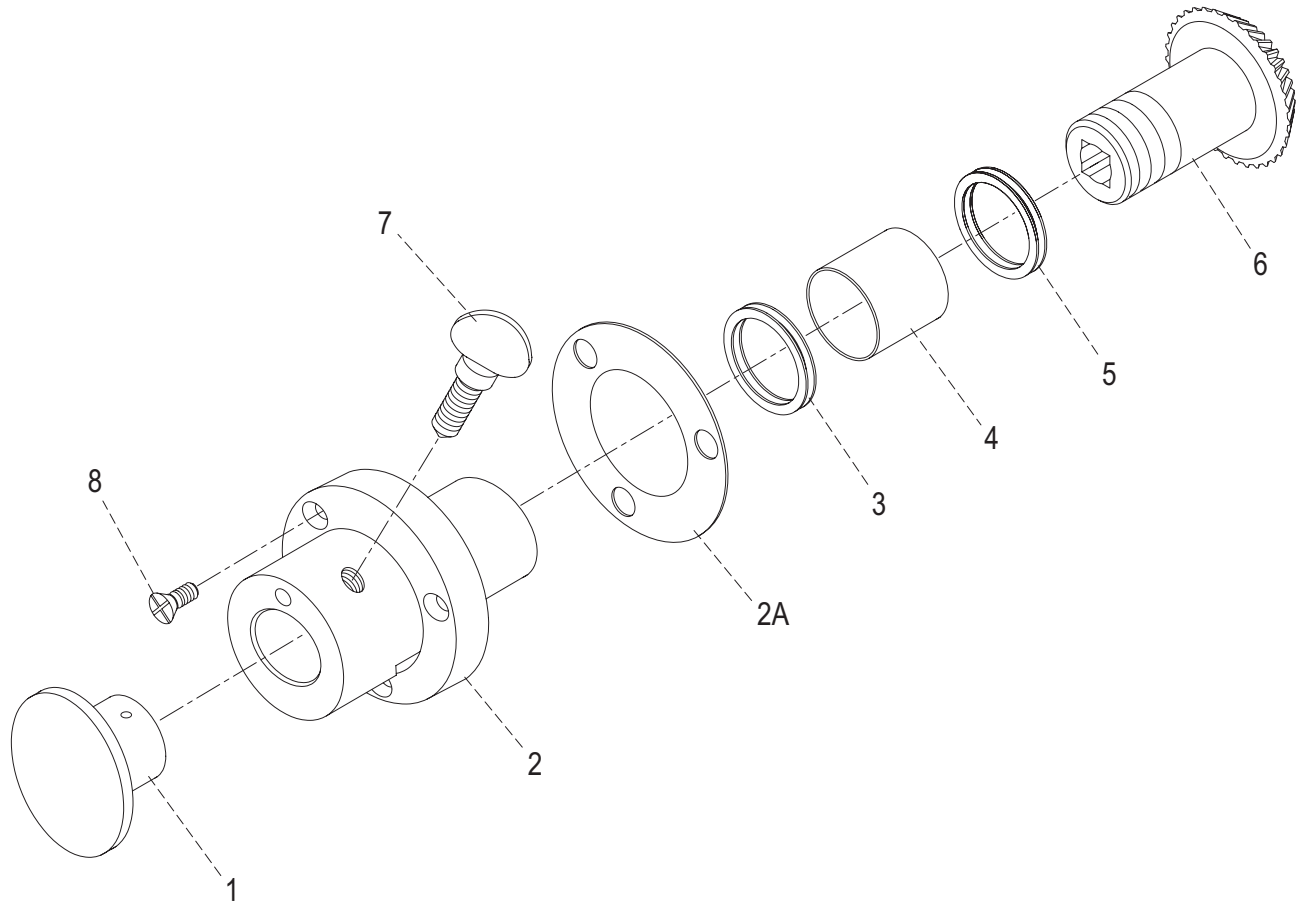
ITEM	DESCRIPTION	PART NUMBER	QTY
1	GUARD, REAR	X40036	1
1A	SCREW	X40101	4
1B	WASHER, FLAT	X40101A	4
2	MIXER COLUMN COVER	X40102	1
2A	SCREW	X40182	3
2B	WASHER, FLAT	X40182A	3
3	BOWL CRADLE	X40034	1
4	DOWEL SCREW	X40109	2
4A	WASHER, LOCK	X40034A	2
4B	NUT, STOP	X40110	8
5	BOWL CLAMP STOP PIN	X40164	2
6	TOUCH SHAFT & NUT	X40106	1
7	BOWL CLAMP, OLD STYLE (SET/2)	X40033-1	1
	BOWL CLAMP, NEW STYLE (SET/2)	X40033-2	1
7A	BOWL CLAMP SCREW	X40108	2
7B	BOWL CLAMP (SET/2)	X40033	1
7C	WASHER, FLAT	X40033A	4
7D	HARDWARE CAP RETAINER	X40033B	2
7E	SPRING	X40168	2
7F	WASHER, LOCK	X40033C	2
7G	NUT, STOP	X40169	4
7H	HARDWARE CAP	X40170	2
8	CRADLE SLIDE GUIDES	X40035	2
8A	WASHER, FLAT	X40107A	8
8B	SCREW	X40107	8
9	FRONT/REAR RUBBER FEET (SET)	X40162-163	1
10	SHIPPING WASHER	X40173	4
10A	SCREW	X40039	4
11	MIXER BASE	X40038	1
11A	PIN, COLUMN LOCATOR	X40040	2
11B	WASHER, FLAT	X40171	4
11C	SCREW	X40172	4
12	BASE SCREEN	X40037	1
13	MIXER COLUMN	X40042	1
13A	PIN, HEAD LOCATOR	X40165	2
14	PLATE, REAR COVER	X40055	1
14A	SCREW	X40056	6
15	MICROSWITCH, BOWL LIFT	X40051	1
16	SCREW SLEEVE	X40104	1
16A	PIN	X40105	2
17	BOWL LIFT SCREW	X40041	1
17A	KEY	X40041A	1
18	C-RING	X40103	1
19	BALL BEARING	X40043	1
20	C-RING	X40044	1
21	OBLIQUE GEAR (30T)	X40045	1
22	C-RING	X40046	1
23	C-RING	X40049	1
24	OBLIQUE GEAR (30T)	X40048	1
25	SHAFT	X40047	1
25A	KEY	X40175	1
25B	KEY	X40177	1
26	OILLESS BEARING	X40050	1
27	C-RING	X40054	1
28	HAND WHEEL CRANK WITH HANDLE, PLASTIC	X40053	1
	HAND WHEEL CRANK WITH HANDLE, METAL	X40053M	
28A	HAND WHEEL CRANK HANDLE	X40053-1	1
28B	SET SCREW	X40053A	1
28C	HAND WHEEL CAP	X40053-2	1
28D	SPACER	X40053-3	1
29	C-RING	X40052	1
30	LABEL, HAZARDOUS VOLTAGE (NOT SHOWN)	X91008	1
31	LABEL, CAUTION 3-PH (3PHASE UNITS)(NOT SHOWN)	X91011	1

SP40P HEAD

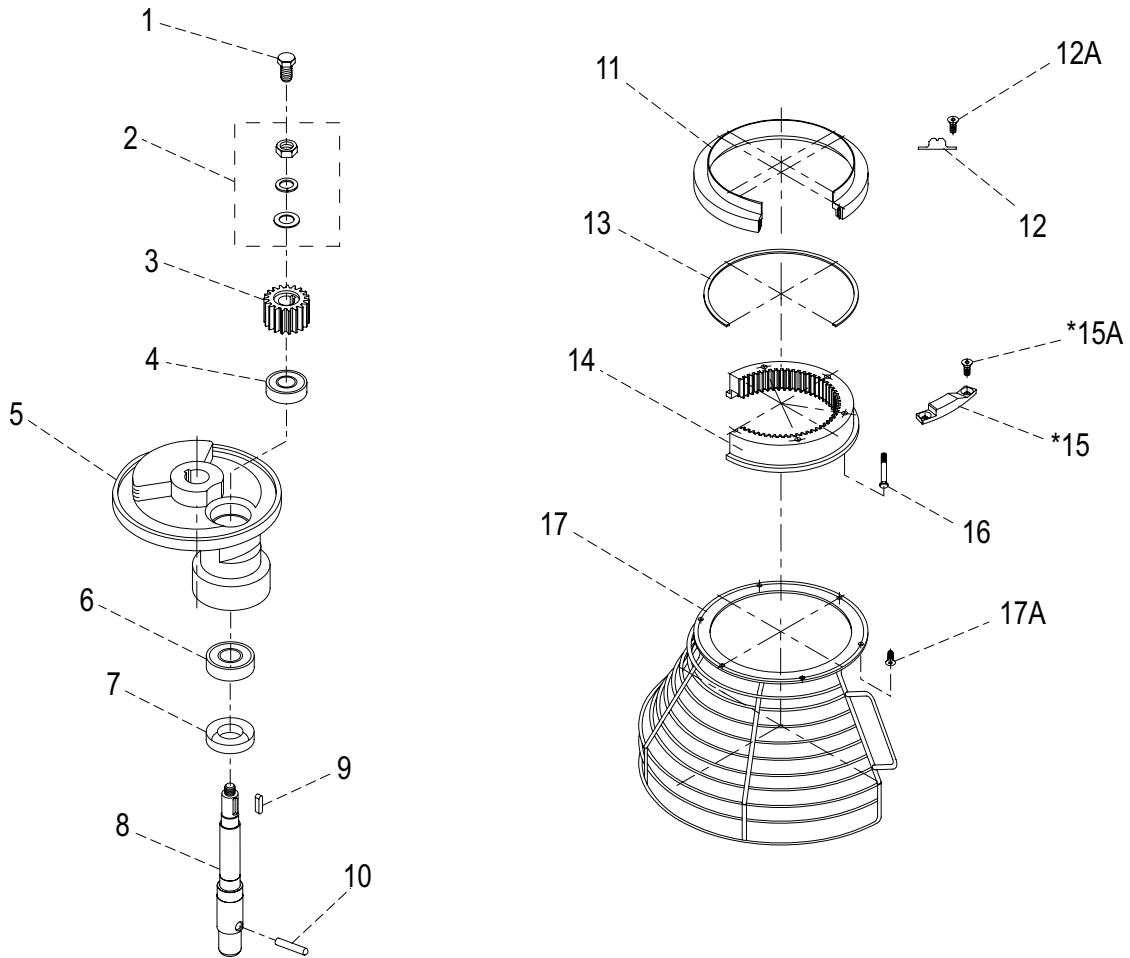


ITEM	DESCRIPTION	PART NUMBER	QTY
1	COVER, TRANSMISSION	X40004	1
1A	SCREW	X40207	2
1B	SCREW	X40220	1
2	COVER, SWITCH BOX	X40002	1
2A	SCREW	X40001	6
2B	GASKET	X40003	1
3	CONTROL PANEL	X40005	1
3A	SCREW	X40204	8
4	EMERGENCY STOP BUTTON	X40006	1
5	START BUTTON	X40007	1
5A	BOOT, START/STOP SWITCH BUTTON (NOT SHOWN)	X40007-1	2
6	TIMER WITH KNOB	X40008	1
6A	TIMER KNOB	X40206	1
7	PLATE, ELECTRONICS MOUNTING	X40013	2
8	CONNECTING BLOCK SET	X40012	1
	CONNECTING BLOCK, 2C GRY	X40012-2G	7
	CONNECTING BLOCK, 4C ORG	X40012-4R	1
	CONNECTING BLOCK END CAP	X40012-EC	1
9	OVERLOAD RELAY, SP40 2HP, 1PH	X40154-2	1
	OVERLOAD RELAY, SP40 2HP, 3PH	X40154-1	
10	CONTACTOR, SP40 2HP, 1PH	X40011-2	1
	CONTACTOR, SP40 2HP, 3PH	X40011-1	
11	TUBE, SUPPORT	X40153	2
11A	WASHER, FLAT	X40153A	2
11B	SCREW	X40086	2
12	TUBE, SUPPORT	X40085	2
12A	WASHER, FLAT	X40085A	2
12B	SCREW	X40010	2
13	COVER, GEAR HOUSING	X40077	1
13A	WASHER, LOCK	X40198	4
13B	SCREW	X40197	4
14	GREASE PLUG	X40084	2
15	BALL BEARING	X40083	1
16	BALL BEARING	X40079	1
17	WHEEL, MAIN COG	X40080	1
18	KEY	X40081	1
19	NUT, STOP - OLD STYLE (KEYED) SHAFT	X40082	1
	NUT, STOP - NEW STYLE (SPLINED) SHAFT	X40147	
20	BALL BEARING	X40078	1
21	PLATE, VENTILATION	X40076	1
22	TRANSMISSION CASE	X40087	1
22A	PIN, LOCATING	X40199	2
23	LABEL, LUBRICATE	X91009	1
24	GREASE FITTING	X40087-1	1
24A	GREASE TUBE	X40087-2	1
25	LABEL, ARROW	X91012	1
26	LABEL, STOP TO CHANGE GEAR	X91010	1
27	SAFETY GUARD SPRING LOCK	X40160	1
27A	WASHER, FLAT	X30184A	2
27B	SCREW	X40184	2
28	TOUCH SHAFT	X40096	1
28A	SPRING	X40095	1
28B	TUBE	X40187	1
28C	NUT	X40186	2
29	GEAR SHIFT LEVER ASSEMBLY	X40057-60	1
30	GEAR SHIFT LEVER WITH KNOB	X40057	1
30A	KNOB, GEAR SHIFT	X40057-1	1
31	SHAFT	X40058	1
32	COVER	X40059	1
32A	SCREW	X40179	4
32B	GASKET	X40059-1	1
33	SHAFT BIAS	X40060	1
33A	ROLLER	X40181	2
33B	SPRING	X40180	2
33C	PIN	X40060A	1
34	MICROSWITCH	X40063	1
34A	SCREW	X40188	2
34B	NUT	X40188A	4
35	BRACKET, MICROSWITCH	X40062	1
35A	SCREW	X40190	2
35B	NUT	X40183	4
36	PLATE, WARNING	X40066	1
36A	SCREW	X40065	4

SP40P HUB ASSEMBLY

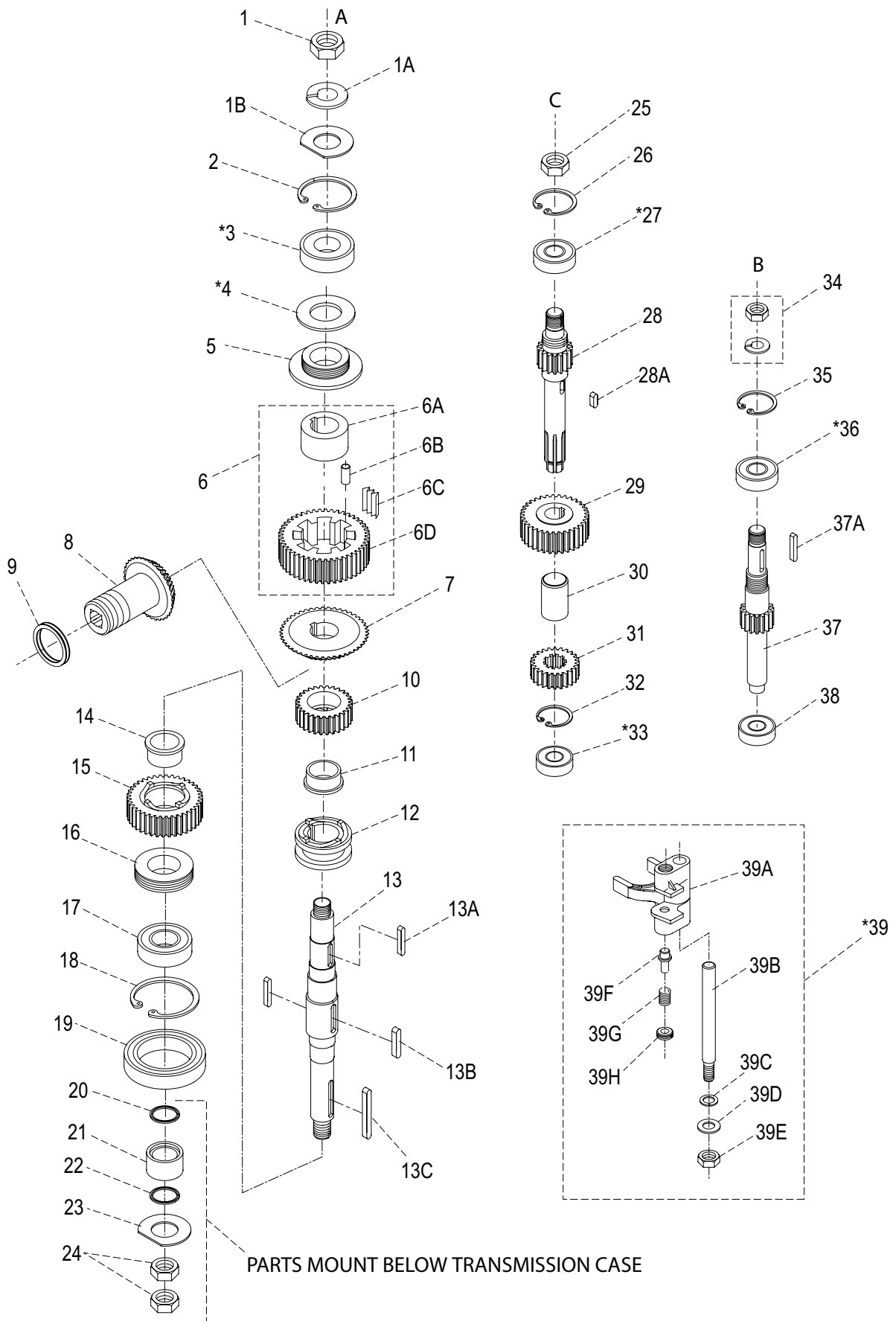


ITEM	DESCRIPTION	PART NUMBER	QTY
1	ATTACHMENT HOLE PLUG	X40016	1
2	ATTACHMENT HUB (INCLUDES X40018 & X40200)	X40017	1
2A	GASKET	X40017-1	1
3	OIL SEAL	X40018	1
4	BEARING	X40201	1
5	THRUST WASHER	X40018-1	2
6	LEVEL DRIVE GEAR (35T)	X40014	1
7	THUMB SCREW	X40015	1
8	SCREW	X40202	3



ITEM	DESCRIPTION	PART NUMBER	QTY
1	SCREW (OLD STYLE SHAFT)	X40019	1
2	WASHER AND STOP NUT	X40020	1
3	PINION, BEATER (21T)	X40021	1
4	BALL BEARING	X40022	1
5	PLANETARY SHAFT HOLDER	X40023	1
6	BALL BEARING	X40024	1
7	OIL SEAL	X40025	1
8	PLANETARY SHAFT, EXTERNAL THREAD (NEW STYLE)	X40027	1
	PLANETARY SHAFT, INTERNAL THREAD (OLD STYLE)	-	1
9	LEVEL KEY	X40026	1
10	PIN	X40028	1
11	SLIDE SHEATH	X40090	1
12	SAFETY GUARD SPRING LOCK FIXTURE	X40161	1
12A	SCREW	X40161A	2
13	MAT	X40091	1
14	RING GEAR (67T)	X40092	1
15	TOUCH MASS	X40096	2
15A	SCREW	X40097	2
16	SCREW	X40099	6
17	FRONT INTERLOCKING GUARD ASSY	X40093-94	1
17A	SCREW	X40100	6

SP40P GEARBOX

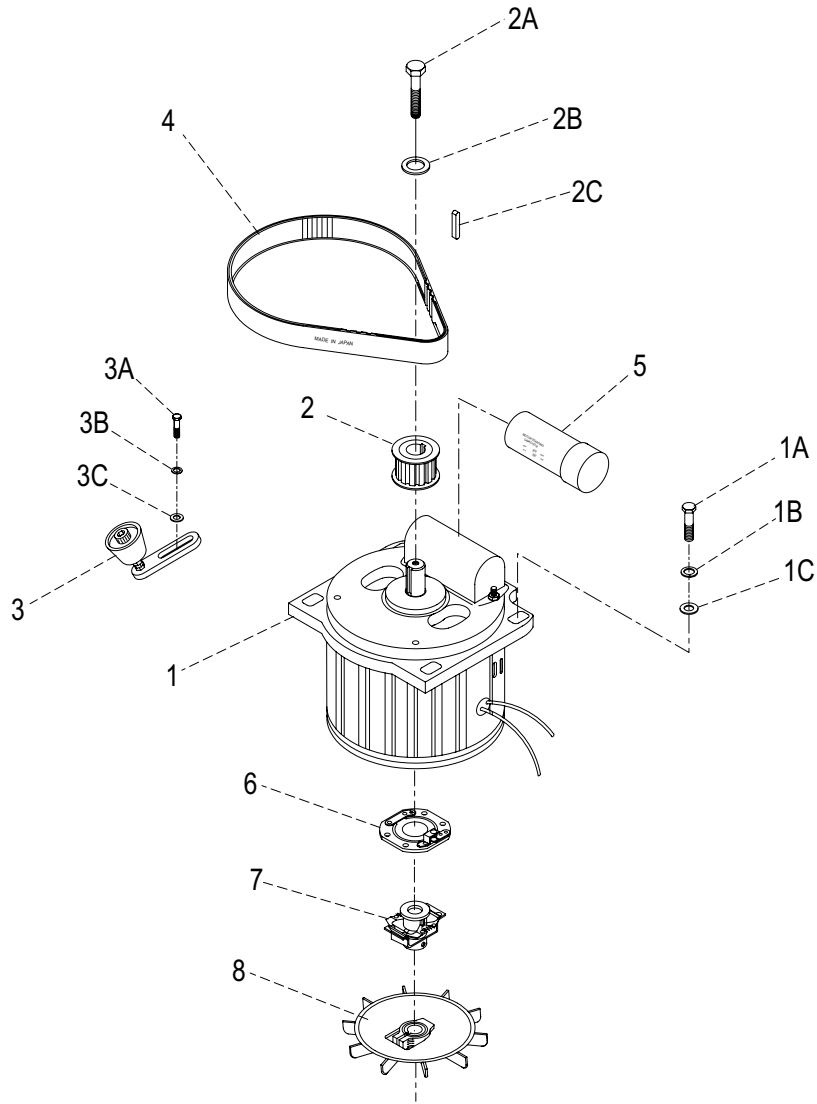


*PART CONFIGURATION MAY VARY.

SP40P GEARBOX

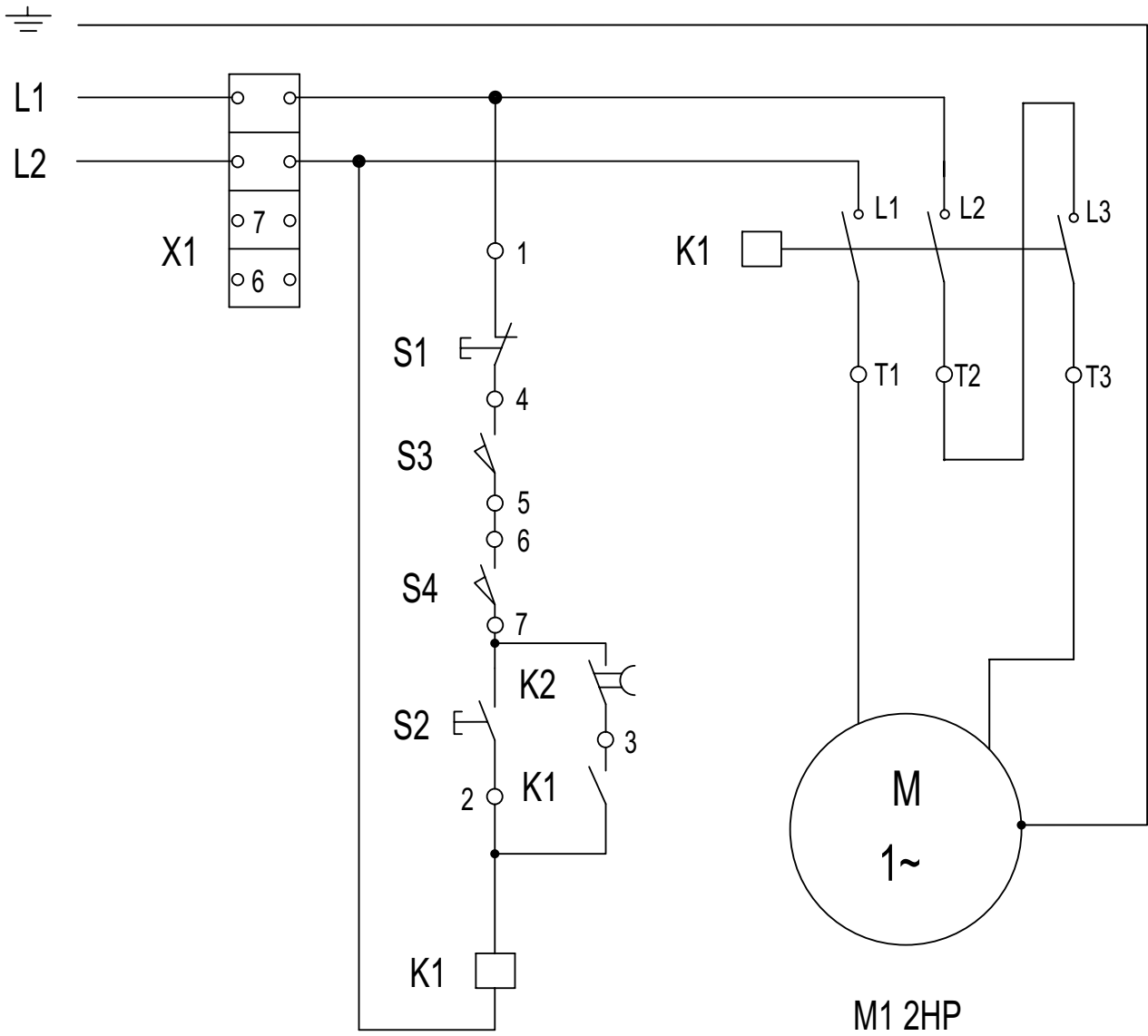
ITEM	DESCRIPTION	PART NUMBER	QTY
1	STOP NUT	X40111	1
1A	LOCK WASHER	X40111A	1
1B	FLAT WASHER	X40111B	1
2	C-RING	X40112	1
*3	BALL BEARING	X40024	1
*4	SHIM	X40024A	A/R
5	LEAD-IN OIL PAD	X40113	1
6	SLOW SPEED GEAR ASSEMBLY	X40114-117	1
6A	BUSHING	X40114	1
6B	ROLLER PIN	X40115	1
6C	SLICE SPRING	X40116	1
6D	GEAR, SLOW SPEED (52T)	-	1
7	GEAR, BEVEL (52T)	X40118	1
8	HUB DRIVE GEAR (35T)	X40014	1
9	THRUST WASHER	X40018-1	1
10	GEAR, CLUTCH (36T) OLD STYLE	X40120	1
	GEAR, CLUTCH (34T) NEW STYLE	X40209	1
11	BUSHING, CLUTCH	X40119	1
12	SLEEVE, CLUTCH	X40133	1
13	DRIVE SHAFT	X40130	1
13A	LEVEL KEY	X40121	1
13B	LEVEL KEY	X40132	2
13C	LEVEL KEY	X40131	1
14	BUSHING, CLUTCH	X40123	1
15	GEAR, CLUTCH (45T)	X40122	1
16	HEEL	X40124	1
17	BALL BEARING	X40125	1
18	C-RING	X40126	1
19	OIL SEAL	X40128	1
20	O-RING	X40221	1
21	GUARD, OIL BUSHING	X40127	1
22	O-RING	X40221	1
23	FLAT WASHER	X40129A	1
24	STOP NUT	X40129	2
25	STOP NUT	X40147	1
26	C-RING	X40151	1
*27	BALL BEARING (QTY MAY VARY)	X40078	1
28	TRANSMISSION SHAFT (13T) OLD STYLE, KEYED	X40150-1	1
	TRANSMISSION SHAFT (13T) NEW STYLE, SPLINED	X40150-2	1
28A	LEVEL KEY	X40081	1
29	GEAR (29T) OLD STYLE	X40148	1
30	BUSHING, SPACER	X40144	1
31	GEAR (20T) OLD STYLE, KEYED	X40143-1	1
	GEAR (20T) NEW STYLE, SPLINED	X40143-2	1
32	C-RING	X40141	1
*33	BALL BEARING (QTY MAY VARY)	X40140	1
34	NUT, STOP & LOCK WASHER	X40082	1
35	C-RING	X40146	1
*36	BALL BEARING (QTY MAY VARY)	X40078	2
37	SHAFT, MASTER (15T)	X40145	1
37A	LEVEL KEY	X40081	1
38	BALL BEARING	X40142	1
39	YOKE, SHIFTER ASSEMBLY	X40134-139	1
39A	YOKE, SHIFTER	X40139	1
39B	GUIDE, ROD SHIFTER	X40135	1
39C	LOCK WASHER	X40135A	1
39D	FLAT WASHER	X40135B	1
39E	STOP NUT	X40134	1
39F	PLUNGER, YOKE SHIFTER	X40138	1
39G	SPRING, YOKE SHIFTER	X40137	1
39H	SPRING, RETAINER	X40136	1

SP40P MOTOR



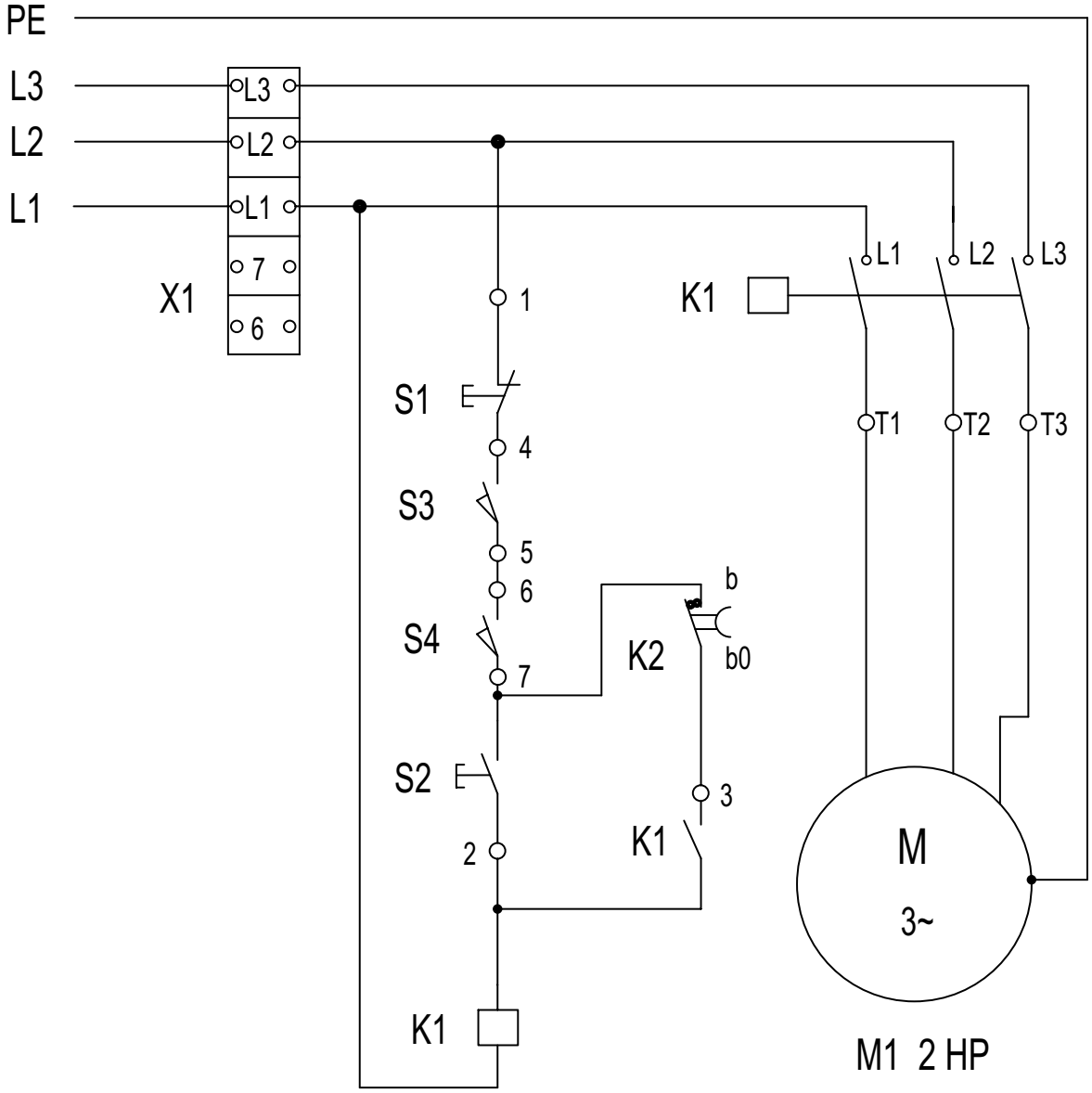
ITEM	DESCRIPTION	PART NUMBER	QTY
1	MOTOR, SP40P 2HP 208/60/3	X40068-1	1
	MOTOR, SP40P 2HP 220/60/1	X40068-2	
1A	SCREW	X40069	4
1B	WASHER, LOCK	X40069A	4
1C	WASHER, FLAT	X40069B	4
2	WHEEL, MOTOR COG (21T)	X40071	1
2A	SCREW	X40075	1
2B	WASHER, FLAT	X40074	2
2C	LEVEL KEY	X40073	1
3	BELT TENSIONER	X40158	1
3A	SCREW	X40196	2
3B	WASHER, LOCK	X40195	2
3C	WASHER, FLAT	X40194	2
4	COGGED BELT (S8M-880)	X40072-1	1
	COGGED BELT (S8M-896)	X40072-2	1
5	CAPACITOR, START 400Mf	X40070-1	1
	CAPACITOR, RUN 50Mf	X40070-2	1
6	SWITCH, PLATINUM	X40067	1
7	CLUTCH	X40064	1
8	COOLING FAN	X40061	1

ELECTRICAL DIAGRAM SP40P PLANETARY MIXER 220V Single Phase



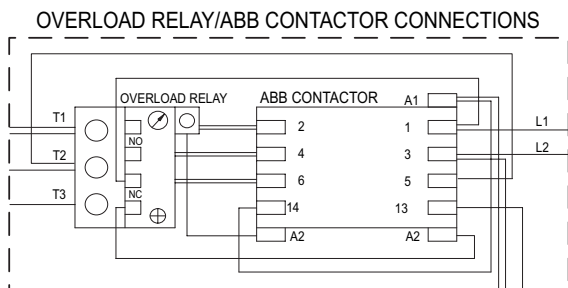
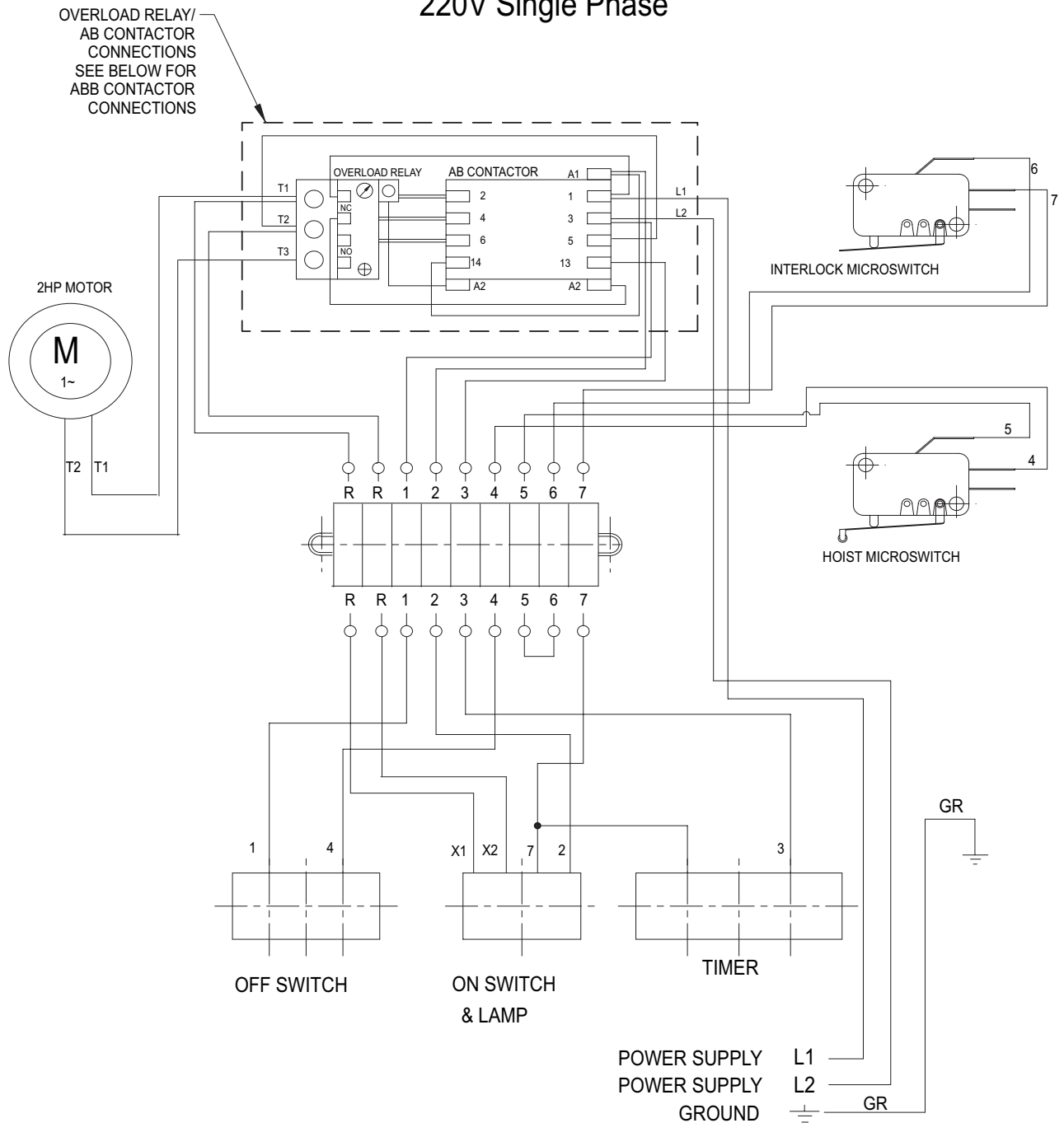
ITEM	DESCRIPTION	QTY
S1	EMERGENCY STOP BUTTON	1
S2	START BUTTON	1
S3	MICROSWITCH (BOWL LIFT)	1
S4	MICROSWITCH (INTERLOCK GUARD)	1
K1	CONTACTOR	1
K2	TIMER	1
M1	MOTOR, 2HP SINGLE PHASE 220V	1

ELECTRICAL DIAGRAM SP40P PLANETARY MIXER 208V Three Phase



ITEM	DESCRIPTION	QTY
S1	EMERGENCY STOP BUTTON	1
S2	START BUTTON	1
S3	MICROSWITCH (BOWL LIFT)	1
S4	MICROSWITCH (INTERLOCK GUARD)	1
K1	CONTACTOR	1
K2	TIMER	1
M1	MOTOR, 2HP THREE PHASE 208V	1

SCHEMATIC SP40P PLANETARY MIXER 220V Single Phase



SCHEMATIC SP40P PLANETARY MIXER 208V Three Phase

