



GRINDMASTER®

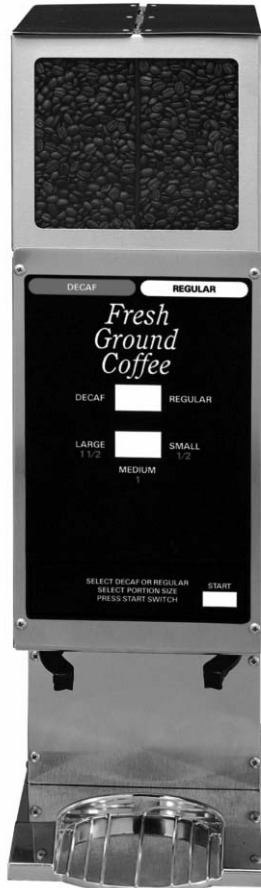
Operator Manual

250 Series Coffee Grinders

Models 250, 250-3A, 250RH-2 and 250RH-3



Model 250



Model 250-3A



Model 250RH-2

Table of Contents

Specifications.....2	Cleaning & Maintenance6
Safety Information.....2	Troubleshooting Guide.....8
Installation.....3	Parts Diagram and List10
Operation4	Wiring Diagram.....17

Thank you for purchasing this quality coffee grinder. For your safety and the safety of others, read all warnings and the operator's manual before installing or using the product. Properly instruct all operators. Keep training records. For future reference, record serial number here:

Grindmaster-Cecilware

4003 Collins Lane, Louisville, KY 40245 USA
Phone: 502.425.4776 Toll Free: 800.695.4500
Fax: 502.425.4664
Web: gmcw.com Email: info@gmcw.com

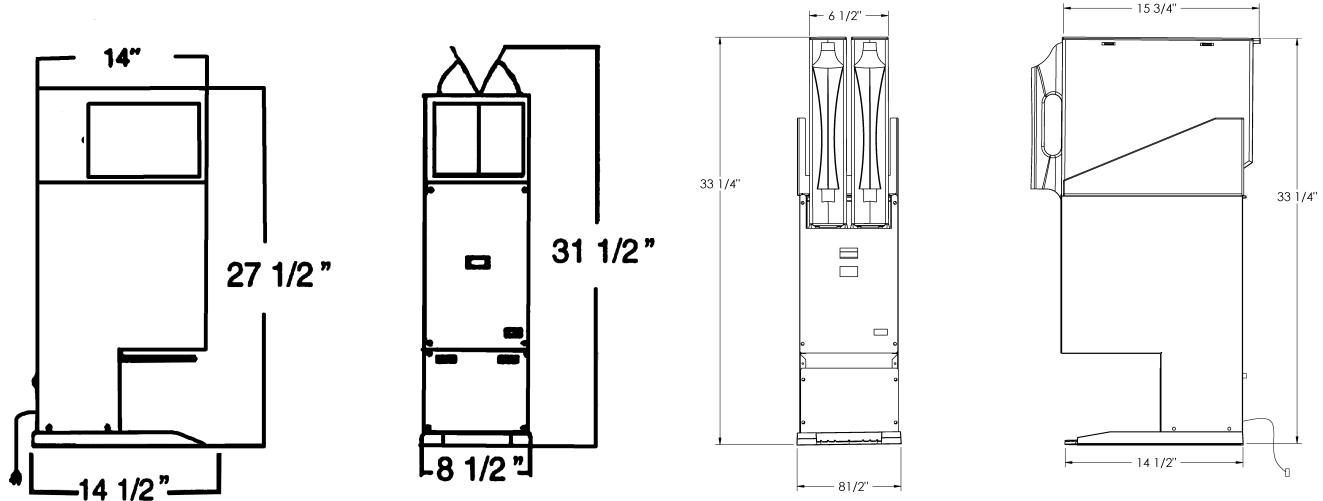
Grindmaster-Cecilware provides the industry's BEST warranty. Visit gmcw.com for warranty terms and conditions.



**Grindmaster
Cecilware**

Specifications

Model	Description	Electrical
250	(2) 5.5 lbs. hoppers. Single portion each side. C-UL-US Certification	120V / 920 W / 8A / 1 Ph
250-3A	(2) 5.5 lbs. hoppers. Three portions each side. C-UL-US Certification	120V / 920 W / 8A / 1 Ph
250RH-2	(2) 5+ lbs. removable hoppers. Dual portions each side. C-UL-US Certification	120V / 920 W / 8A / 1 Ph
250RH-3	(2) 5+ lbs. removable hoppers. Three portions each side. C-UL-US Certification	120V / 920 W / 8A / 1 Ph
250-230V	(2) 5.5 lbs. (2.5 kg) hoppers. Single portion each side. UL, NSF Certification	230V / 50/60 Hz / 4A



Model 250 and 250A

Model 250RH-2 and 250RH-3

Safety Information

Important Safety Information



This is the safety alert symbol. It is used to alert you to potential personal injury hazards. Obey all safety messages that follow this symbol to avoid possible injury or death.

For your safety and the safety of others, read all warnings and the operator's manual before installing or using the product.

DANGER: This term warns the user of imminent hazard that will result in serious injury or death.

WARNING: This term refers to a potential hazard or unsafe practice, which could result in serious injury or death.

CAUTION: This term refers to a potential hazard or unsafe practice, which could result in minor or moderate injury.

NOTICE: This term refers to information that needs special attention or must be fully understood.

WARNING

- Product must be attached to a three wire 120V 15 AMP receptacle (export units - 230V 16 AMP).
- Do not deform plug or cord.
- Follow national and local electrical codes.
- Do not use near combustibles.
- Use only on a circuit load that is properly protected and capable of the rated load.
- Always unplug unit from power supply before servicing or cleaning.

FAILURE TO COMPLY RISKS PERSONAL INJURY, SHOCK HAZARD, FIRE, OR DAMAGE TO EQUIPMENT.

Safety Information (continued)

⚠ CAUTION

Personal injury hazard. Keep fingers, hands, and foreign objects out of hopper or chute opening.

NOTICE

Never connect to an overloaded circuit or to an extension cord, otherwise serious damage to the motor may result.

Grinder models 250RH-2 & 250RH-3 are not continuous duty grinders. Allow one minute between grinds.

Installation

NOTICE: It is essential that full voltage and amperage always be available as it takes full power to grind coffee.

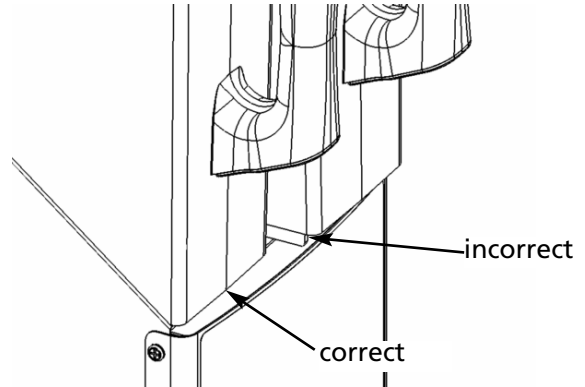
Please read this manual before operating the grinder.

Models 250 and 250-3A

1. Carefully remove grinder from carton.
2. Place grinder in position on shelf, counter or other flat surface.
3. Plug grinder into the specified power source. (Check rating plate on back of unit for voltage and amperage requirements.) Do not use an extension cord.
4. Fill hoppers with whole bean coffee.
5. Grind a small amount of whole bean coffee following operating instructions as described in this manual.

Models 250RH-2 and 250RH-3

1. Remove the flat cardboard insert. Remove the cardboard insert on top of the grinder. Next, remove the small box next to the grinder (hopper enclosed). Next, remove corner supports and then remove the grinder. Lastly, remove the second hopper.
2. Carefully remove grinder from carton.
3. Place grinder in position on shelf, counter or other flat surface.
4. Plug grinder into the specified power source. (Check rating plate on back of unit for voltage and amperage requirements.) Do not use an extension cord.
5. Fill hoppers with whole bean coffee and place on grinder. Make sure the base of each hopper is seated in its designated area.



See **Removal and Reinstallation of Hopper Assembly** section on page 7 for detailed instructions.

6. Grind a small amount of whole bean coffee following operating instructions as described in this manual.

If you need help, call Grindmaster-Cecilware Technical Service Department for help, (502) 425-4776 or (800) 695-4500 (USA & Canada only) 8 AM - 6 PM EST.

Prior authorization must be obtained from Grindmaster-Cecilware for all warranty claims.

Operation

Your new coffee grinder is easy to operate and maintain. Before you place it in service, please have all personnel familiarize themselves with these instructions. Keep this manual in a convenient place for ready reference.

How to Operate

1. Fill the hopper with whole bean coffee and close the lid.
250RH Models: Place full hoppers on machine making sure the base of each hopper is seated in designated area. (Refer to figure on previous page.)
2. Place the brew basket with coffee filter between brew rails or basket arms.
3. Choose the type of coffee you wish to grind by pressing the rocker selection switch.
4. Push the start button. Grinder will grind a predetermined amount of coffee, and then automatically shut off.
5. When grinder stops, remove the brew basket.

Before shipment, this grinder has been tested with coffee and has been accurately adjusted to deliver a standard autodrip grind. The grind texture can be adjusted, if necessary, to a finer or coarser grind (see **Grind Adjustment**).

Helpful Hints

Because of the inherent properties of some decaffeinated coffee, it may be necessary to dispense a slightly greater amount to achieve the desired level of flavor extraction as in regular coffee. This should be evaluated based on the coffee you use as well as the brewing equipment used.

If too much or too little coffee is dispensed, adjust the auger timer inside the grinder to dispense the desired weight of ground coffee (see **Portion Adjustment**). The grinder is factory set to deliver approximately 2 ounces of ground coffee. This weight is approximate, as the density of all coffee beans is not the same. The only way to ensure the desired portion is being dispensed is to weigh the coffee after it has been ground.

Portion Adjustment

This unit utilizes a timer control to determine the amount of beans ground during each grind cycle. Changing the timer setting will increase or decrease the amount of ground coffee dispensed.

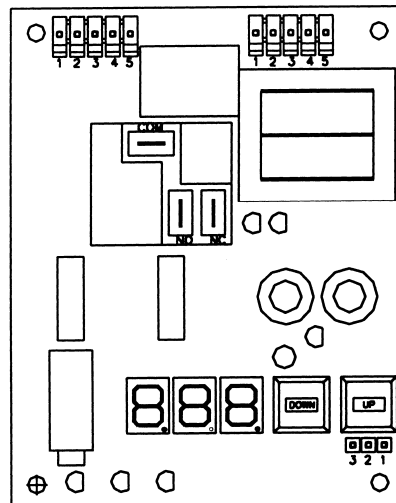
The length of time to grind a specified quantity of coffee is dependent upon the grind setting and the hardness and size of the coffee beans.

The **Approximate Auger Timer Dial Setting Table** can be used as a guide. The final setting will have to be determined by weighing the coffee dispensed. Once the time has been established, the grinder will dispense approximately the same quantity of coffee each time the start button is pushed. To adjust the portion see **Timer Adjustment**.

Approximate* Auger Timer Dial Setting for Auto Drip Grind

250 Series 120V and 230V Models			
Amount Desired (oz.)	Auger Time Setting (seconds)	Amount Desired (oz.)	Auger Time Setting (seconds)
0.5	1.0-1.3	6	13.0-15.8
1.0	2.1-2.6	8	15.2-18.4
1.5	3.2-3.9	10	17.4-21.1
2.0	4.3-5.3	12	19.5-23.7
2.5	5.4-5.6	14	21.7-26.3
3.0	6.5-7.9	16	26.1-31.6
3.5	7.5-9.2	18	30.5-36.9
4.0	8.6-10.5	20	34.8-42.1
5.0	10.8-13.2	25	39.2-45.0

*You should check the weight of the coffee dispensed to guarantee the time setting is delivering the desired amount. Minor adjustments may be necessary. Different roasts and blends of coffee may affect the time required to obtain a desired throw weight.



Digital Grinder Auger Timer Adjustments:

Tools required: Screwdriver

1. To access timer, remove the timer cover by removing the mounting screws and pulling the cover away from the casing.

Operation (continued)

2. To light up the display on the board and check the time setting, depress either one of the two square buttons located next to the display one time.
3. To change the displayed setting, press and hold either the right or left square button until the desired setting is reached. The left button lowers the displayed value; the right button increases the displayed value. The time values are set in seconds and tenths of a second.
4. Refer to the previous chart for approximate auger timer settings.

NOTE: For accuracy you must weigh the coffee and make appropriate adjustments.

5. In order to store this desired value, you must press the grinder start switch once.

NOTE: If start switch is not pressed, the last value stored will be used when you return to grinding mode.

6. Once the timer is adjusted, reinstall the timer cover.

Grinds

Before shipment, this grinder has been tested with coffee and has been accurately adjusted to deliver ground coffee to normal auto drip specifications.

The Grinding Burrs are made of an extremely hard and wear resistant material. From time to time, grind adjustments (see following instructions) may be necessary. If the grind runs coarser than expected after normal adjustment and the grind time has increased, the burrs may have excess wear and should be replaced. New burrs should always be installed as a pair, never one or the other, as they are accurately ground and lapped in pairs. Old burrs cannot be resharpened.

Grind Adjustment

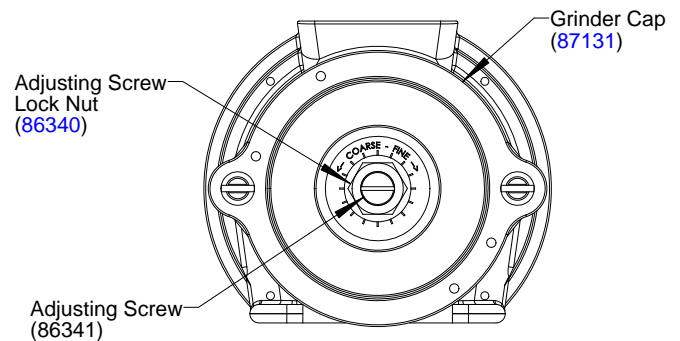
Tools required: Phillips screwdriver
Large blade screwdriver
Pliers

1. Remove Upper Front Plate by removing the (4) screws in the corners, to expose Grinder Cap.
2. Loosen Adjusting Screw Lock Nut by turning counter clockwise.
3. Turn slotted Adjusting Screw clockwise to make grind finer or counterclockwise to make grind coarser. Generally a 1/8 to 1/4 turn will provide the desired adjustment.

NOTE: Use dial on Grinder Cap as reference. Do not turn more than one mark before testing new grind adjustment.

4. After adjustment has been made, tighten Adjusting Screw Lock Nut.
5. To visually inspect grind adjustment, test grind a small portion of coffee and readjust if necessary.

NOTE: Adjusting the grind may alter the portion of coffee dispensed. After grind adjustment, weigh portion and adjust if necessary (See **Portion Adjustment**).



Protection

This grinder is equipped with both a circuit breaker and a shear disc to protect motor and burrs.

Circuit Breaker

This grinder is equipped with a circuit breaker to protect the motor from overloading. When the circuit breaker trips, the reset button will pop out approximately 1/4" which stops the power to the grinder. The reset button is located above the power cord on the back of the grinder. To reset the circuit breaker, wait two minutes then push in the button. You will hear a click as it resets. If the grinder does not operate after resetting the circuit breaker, there may be an obstruction in the grinding mechanism that is stalling the motor. In this case, the Grinder Head should be cleaned as described in **Shear Disc Replacement**.

Cleaning & Maintenance

Cleaning Instructions

The outside of the machine can be cleaned with warm soapy water and a damp cloth. Grinding parts should be cleaned with a stiff brush or dry cloth. **DO NOT USE WATER.** See **Shear Disc Replacement** for instructions on assembling and disassembling grinder parts. Before reassembling, wipe motor shaft with dry cloth.

Models 250RH-2 and 250RH-3

Regular usage of the coffee hoppers will cause oils to accumulate on the inner surface, requiring occasional cleaning.

1. Remove hopper from grinder and empty all beans.
2. Use a soft, damp cloth with a small amount of liquid soap and clean hopper. Use a clean, damp cloth to remove the soap residue. Do not immerse or fill hopper with water.
3. Allow hopper to completely air dry before refilling with beans.
4. Once the hopper is dry, refill with whole bean coffee, cover and replace on grinder.

Lubrication

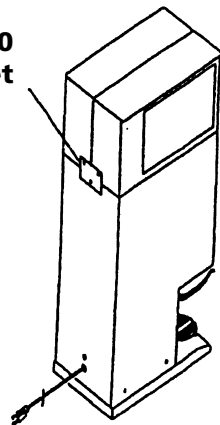
None required.

Shipping Bracket Removal

For Models 250 and, 250-3A:

**Model 250
shipping bracket**

The bracket may be left on grinder, but must be removed prior to servicing.



NOTE: Shipping bracket must be removed prior to removal of upper hopper assembly.

Models 250 and 250-3A are equipped with shipping bracket. Remove bracket prior to installation.

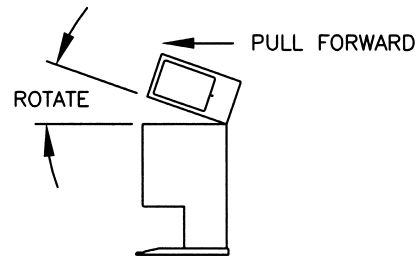
Tools Required: Phillips screwdriver

1. Using the Phillips screwdriver, remove the screws and the bracket located at the back of the grinder.
2. Do not discard the screws and bracket. The bracket should be re-installed on the grinder prior to transporting or shipping.

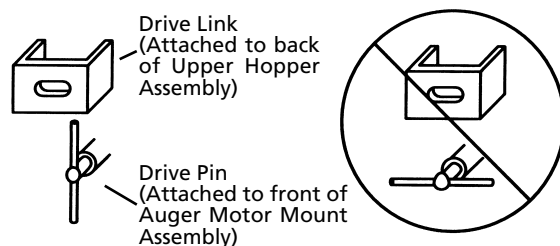
Removal and Reinstallation of Hopper Assembly

For Models 250 and 250-3A:

While lifting Upper Hopper Assembly, rotate the Assembly slightly upward and pull forward



1. Remove Upper Front Plate by removing the four screws in the corners. (Shipping bracket must be removed prior to removal of upper hopper assembly. See instructions and figure above.)
2. Lift Upper Hopper Assembly while rotating the Assembly slightly upward (see figure above).
3. Pull the Assembly forward, toward front of unit and out.
4. To reinstall hopper, ensure the Drive Pins are in vertical position (see following figure).
5. Ensure that Drive Links are in horizontal position.
6. Insert the rear slots of the Upper Hopper Assembly into the rear tabs of the motor bracket.
7. Rotate assembly downward.
8. Reassemble Upper Front Plate.
9. Put the (4) screws back into Upper Front Plate and tighten.



Cleaning & Maintenance (continued)

Removal and Reinstallation of Hopper Assembly

For Models 250RH-2 and 250RH-3:

1. To remove hoppers, grasp hopper by handle and lift up approximately 1/4" and pull hopper back and out of grinder. The bottom bean shut off valve will close automatically, preventing spillage of beans.
2. Once hopper is removed, it can be refilled or cleaned if necessary.
3. To reinstall hopper, grab by handle and set bottom back of hopper on left or right side of grinder, making sure that the drive link is properly oriented (see figure previous page).
4. Push hopper all the way back until it settles in it's designated space (see figure in **Installation**).

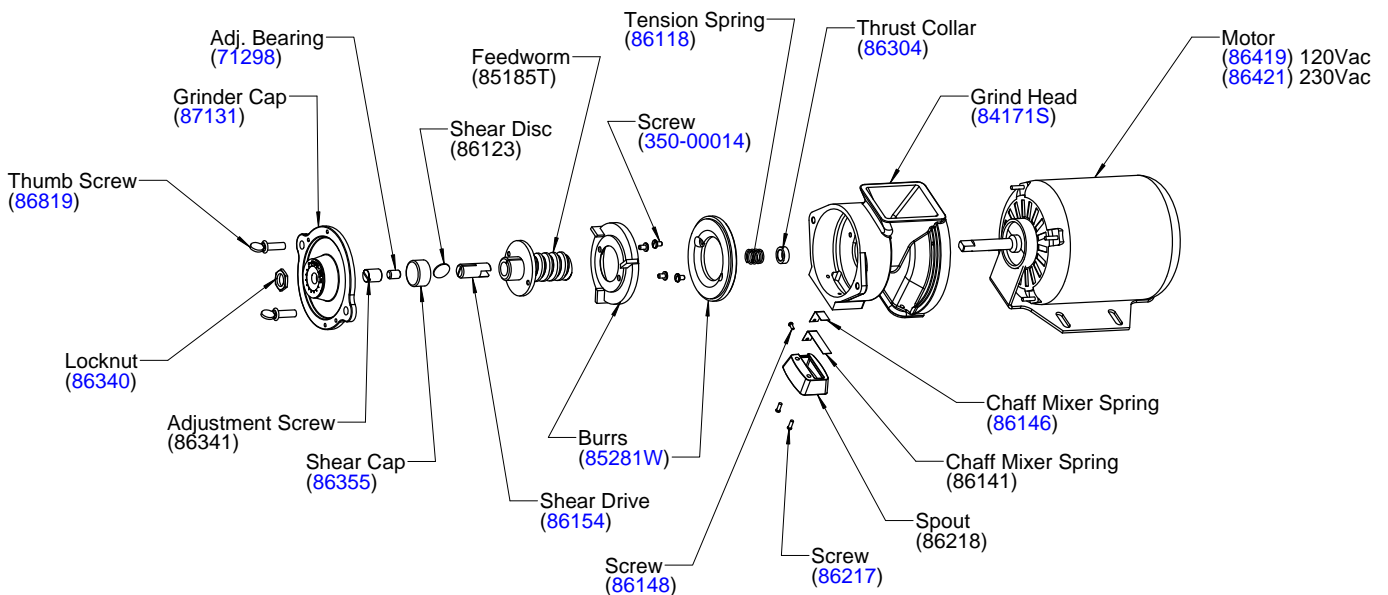
Shear Disc Replacement

If the motor should run and no coffee is dispensed, the Shear Disc may have sheared. Should this occur, perform the following operations in the sequence given (refer to following drawing).

Tools Required: Phillips Screwdriver
Pliers

▲ WARNING Unplug grinder to prevent electrical shock.

1. Remove the Upper Front Plate of the grinder to provide access to the grinder mechanism.
2. Remove the Grinder Cap by taking out the two Thumb Screws.
3. Pull out the Revolving Burr and Feedworm Assembly. Clean out the Grinder Head, removing all coffee particles from inside of the Grinder Head and the Grinder Cap so that it can be reset properly.
4. Check that no obstruction has been caught on the surface of the teeth of either burr.
5. Remove the Shear Cap and broken pieces of the Shear Disc. You are now ready to reassemble the grinder mechanism.
6. Slide the Burr and Feedworm Assembly back onto the Motor Shaft making certain that the tongue of the shaft engages the slot in the Shear Drive.
7. Insert a new Shear Disc by aligning the slot in the Shear Drive with the slot in the hub of the Feedworm.
8. Reassemble the Shear Cap and Grinder Cap. Make certain the Grinder Cap is screwed on tight and is sealed properly against the head and not tilted or misaligned. Otherwise a proper grind cannot be obtained.
9. Replace the Upper Front Plate. Your grinder is now ready to grind.
10. Test the grind and adjust as necessary. (See **Grind Adjustment**.)



Troubleshooting Guide

Before you call for help, please read the following:

▲ WARNING Unplug power cord from outlet before cleaning or servicing your grinder.

Problem	Possible Cause	Solution
Grinder will not start when START button is pushed	Plug not in outlet properly.	Install plug in outlet.
	No power to outlet.	Check outlet with lamp or radio to verify outlet has power.
	Circuit breaker has tripped.	Reset circuit breaker by pushing in reset button until you hear a click.
Grinder runs or hums but no coffee is dispensed	Shear disc is broken.	Replace shear disc. See Shear Disc Replacement or instructions on inside of upper front plate.
	Obstruction in opening to grinding chamber.	Unplug unit. Empty beans out of hopper and clear obstructions. See Shear Disc Replacement for disassembly and assembly instructions.
	Auger has stalled. 250RH Models: Hoppers not properly in place.	Clean auger. Make sure hoppers are seated in their allocated area.
Excessive amount of coffee chaff flying about	Defective chaff mixer spring.	If bent, broken, or missing, replace spring. If stuck open with coffee, clean out coffee to free spring.
	Static electricity.	Tighten all nuts, bolts, and screws and verify outlet is grounded.
Quantity of coffee dispensed each throw is not the same	Auger stalls.	Refer to problem as listed below in this Troubleshooting Guide.
	Timer delay is not working or running long enough.	See "Timer Adjustment" section.
	Defective timer.	Check the length of time the grinder runs with watch. If time varies more than plus or minus 1%, replace timer.
Knobs do not operate smoothly	Coffee beans or bean dust may have clogged carrier.	With machine unplugged, clean carrier.
Auger does not turn	Coffee beans or bean dust may have jammed auger.	With machine unplugged, clean auger opening.
	250RH Models: Hopper not properly seated.	Make sure hopper is seated in its designated area (see Figure A).
Auger will not operate	Motor or link is binding.	Check all alignment of link and motor. Check tightness of motor mounting screws.
	Auger motor has burned out.	Replace motor.
	Wiring harness to motor is loose.	With machine unplugged, check to see if wires are connected to motor.
	250RH Models: Hopper not properly seated.	Make sure hopper is seated in its designated area.

Troubleshooting Guide (continued)

▲ WARNING Unplug power cord from outlet before cleaning or servicing your grinder.

Problem	Possible Cause	Solution
Circuit breaker continuously trips	Insufficient amperage due to use of extension cord. Insufficient amperage due to overloaded line. Grind setting needs adjustment.	Plug unit directly into outlet. Do not use extension cord. Designate single line for grinder. Do not use multi-outlet box. Adjust grind to coarser setting (see Grind Adjustment).
Loud grating noise	Burrs are touching each other on fine grind setting. Thrust bearing rotating inside flange bearing.	Readjust fine grind setting, see (see Grind Adjustment). Replace thrust bearing and shear cap.
Loud vibration noise during grinding when Grind Selector™ is not activated	Cotter pin in the thumb screw linkage may be vibrating.	Attempt to spread flanges of cotter pin or replace cotter pin.

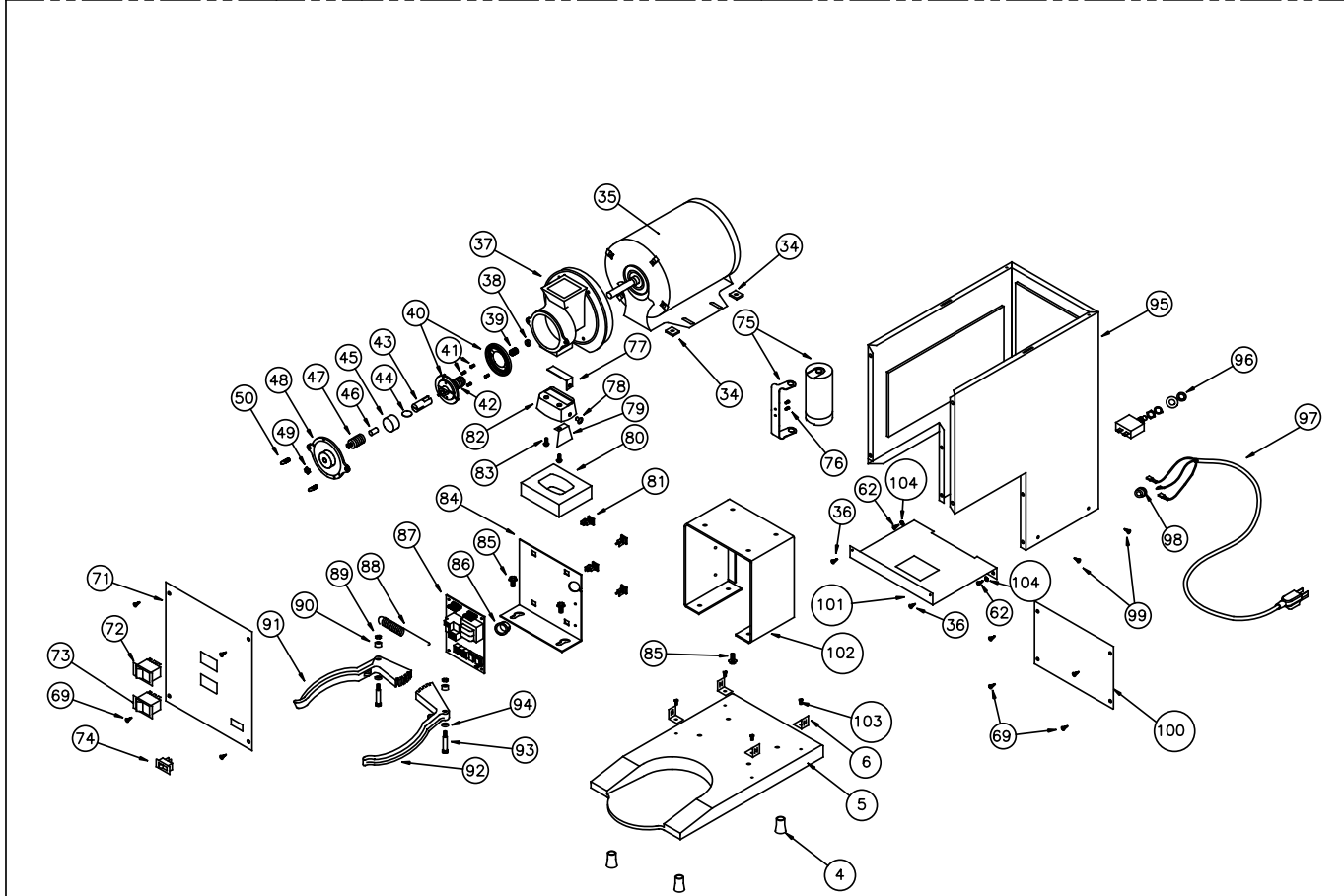
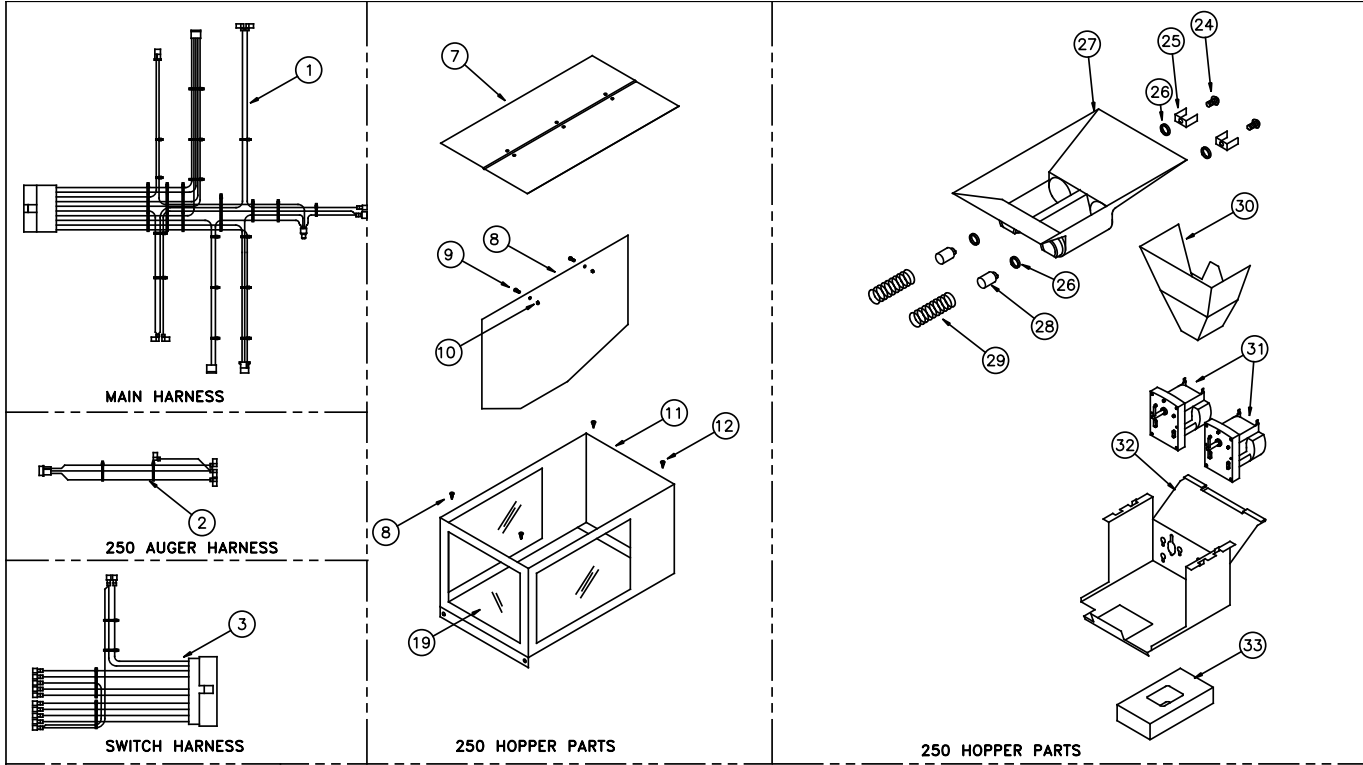
If you still need help, call Grindmaster-Cecilware Technical Service Department, (502) 425-4776 or (800) 695-4500 (USA & Canada only) (Monday through Friday 8 AM - 6 PM EST). Please have the model and serial number ready so that accurate information can be given.

Prior authorization must be obtained from Grindmaster-Cecilware for all warranty claims.

Grindmaster-Cecilware provides the industry's BEST warranty. Visit our website at GMCW.com for warranty terms and conditions.

Parts Diagram and List

Models 250, 250-3A, & 250-230V



Parts Diagram and List (continued)

Models 250, 250-3A, & 250-230V

Item No.	Description	250	250-3A	250-230V
1	HARNESS, 115/250 A & AB	86037	86037	86037
2	HARNESS, 250 SERIES DIGITAL AUGER	86125	86125	86125
3	HARNESS, DIGITAL SWITCH	86121	86117	86121
4	FOOT, RUBBER 100/250	86034	86034	86034
5	BASE	86309	86309	86309
6	BRACKET, TINNEMAN ANGLE	86862	86862	86862
7	250 LID ASSEMBLY	89103	89103	89103
8	SCREW, #8 X 3/8 PH PN SMS T/B 410 SS			
10	SCREW, 6-32 X 1/4 PH PN HD			
12	NUT, 6-32 ACORN LOCK			
14	PARTITION, HOPPER	87609	87609	87609
15	SCREW, 8-32 1/2 SL BD HD NYLON	86087	86087	86087
16	NUT, 8-32 NYLON LOCK	86086	86086	86086
17	SCREW, #8 X 3/8 PH PN SMS T/B 410 SS			
18	HOPPER	87606K	87606K	87617
19	WINDOW, HOPPER	83152	83152	83152
24	SCREW, 8-32 X 3/8" HEX PEM	83143	83143	83143
25	LINK, DRIVE	83368	83368	83368
26	WASHER, NYLON	83141-01	83141-01	83141-01
27	HOPPER, AUGER W/ SPOUT	83150	83150	83150
28	ADAPTER, DRIVE	80019	80019	80019
29	SPRING, AUGER	86046	86046	86046
30	FUNNEL, AUGER	83134	83134	83134
31	MOTOR, AUGER 120V[230V]	86050	86050	[86000]
32	BRACKET, MOTOR	86042-01	86042-01	86042-01
33	GASKET, HOPPER	83081	83081	83081
34	NUT, TINNEMAN 1/4 - 20	86864	86864	
35	MOTOR, 1/2HP 120V [230V]	86419K	86419K	[86421]
36	SCREW, 8-32 X 3/8 PH TR HD M/S 410 SS	82097	82097	82097
37	HEAD, GRIND	84171S	84171S	84171S
38	COLLAR, THRUST	86304	86304	86304
39	SPRING, TENSION	86118	86118	86118
40	BURR (SET)	85281WK	85281WK	85281WK
41	SCREW, #10-32 X 5/16	350-00014	350-00014	350-00014
42	FEEDWORM	85185T	85185T	85185T
43	DRIVE, SHEAR	86154	86154	86154
44	SHEAR DISC	86123	86123	86123
45	COVER, SHEAR	86355	86355	86355
46	BEARING, ADJUSTING	71298	71298	71298
47	GRIND, ADJUST PIN	86341	86341	86341
48	GRIND, CAP	87131	87131	87131
49	NUT, 5/8-18 BRASS ADJUST SCREW	86340	86340	86340
50	SCREW, 5/16-18 X 1 THUMB T/S ZINC	86819	86819	86819
69	SCREW, #8 X 1/4 PH TR HD SMS T/B 410 SS	89116	89116	89116
71	PLATE, FRONT	86007	86006	86007
72	SWITCH, DECAF / REGULAR ROCKER	86075	86075	86075
73	SWITCH, PORTION ROCKER		83231	
74	SWITCH, ROCKER START	70445	70445	80079
75	CAPACITOR, 120V [230V] W/ BRACKET	86144	86144	[86179]
76	SCREW, 8-32 X 1/2	86808	86808	86808
77A	SPRING, CHAFF MIXER	86141	86141	86141
77	SPRING, CHAFF MIXER	86146	86146	86146

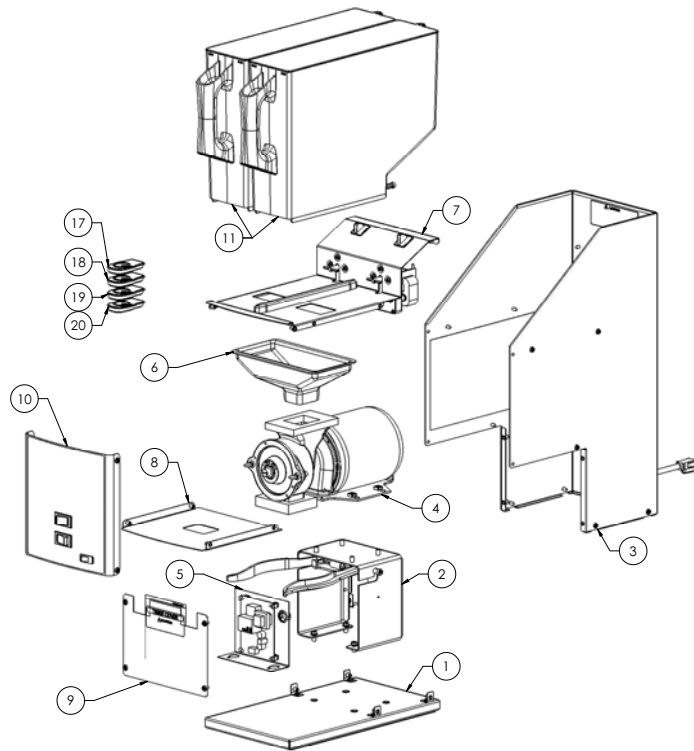
Parts Diagram and List (continued)

Models 250, 250-3A, & 250-230V

Item No.	Description	250	250-3A	250-230V
78	SCREW, 4-40 X 1/4 PH PN HD ZINC	86148	86148	86148
79	DEFLECTOR	86220	86220	86220
80	GASKET, HOPPER FUNNEL	71419	71419	71419
81	STANDOFF, REVERSE EDGEMOUNT	61266	61266	61266
82	SPOUT	86218	86218	86218
83	SCREW, 8-32 X 3/8 PH RD HD	86217	86217	86217
84	BRACKET, CONTROL BOARD	86038	86038	86038
85	BOLT, 1/4-20 HX HD	86872	86872	86872
86	BUSHING, HEYCO OPEN / CLOSED	86039	86039	86039
87	DIGITAL, TIMER	86138	86138	86139
88	SPRING, BASKET ARM	86508	86508	86508
89	NUT, WHIZLOCK 1/4-20	87049	87049	87049
90	SPACER	87026	87026	87026
91	ARM, BASKET LEFT	71014	71014	71014
92	ARM, BASKET RIGHT	71013	71013	71013
93	SCREW, 5/16 X 1 HEX SOC SHLDR	87024	87024	87024
94	SPACER	87025	87025	87025
95	CASING	87602K	87602K	87602K
96	CIRCUIT BREAKER, 10A	86618	86618	83107
97	POWER CORD, 120VAC [230V]	86222	86222	[61453]
98	STRAIN RELIEF	86071	86071	86071
99	SCREW, #10 X 1/2 PH TR HD T/AB 410 SS	82097	82097	82097
100	PLATE, LOWER FRONT	86003	86003	86003
101	PLATE, SAFETY SHIELD	87604	87604	87604
102	MOTOR MOUNT ASSEMBLY	86995	86995	86995
103	SCREW, 10-32 X 5/16 SL BD HD M/S ZINC			
104	WASHER, LCK #8 INT ZNC PLTD	86822	86822	86822

Parts Diagram and List (continued)

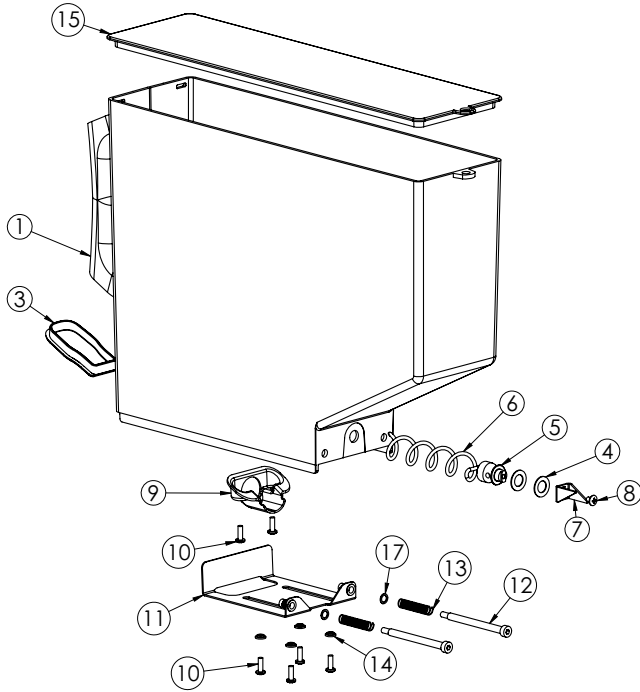
Models 250RH-2 & 250RH-3



Item No.	Description	Part No.
1	Assembly, Base	82281
2	Assembly, Motor Mount, 120V	82294
3	Assembly, RH Casing	82295
4	Assembly, Motor, 120V -60Hz	82284
5	Assembly, Digital Timer	82299
6	Funnel, RH Grinder	86257
7	Assembly, Auger Motor Mount	82292
8	Assembly, Plate, Safety Shield	82296
9	Assembly, Lower Front Plate	82298
10	Assembly, Front Plate, 250RH-2	82297
10	Assembly, Front Plate, 250RH-3	82320
11	Assembly, Removable Hopper	82290
12	Harness, 115/250 A & AB Series Digital	86037
13	Harness, 250AB Digital Switch	86117
14	Harness, 250AB Series Digital Auger	86125
15	Harness, Hopper Switch Jumper	82307
17	Cap, Handle Top, Natural	86262
18	Cap, Handle Top, Orange	86253
19	Cap, Handle Top, Black	86254
20	Cap, Handle Top, Green	86256

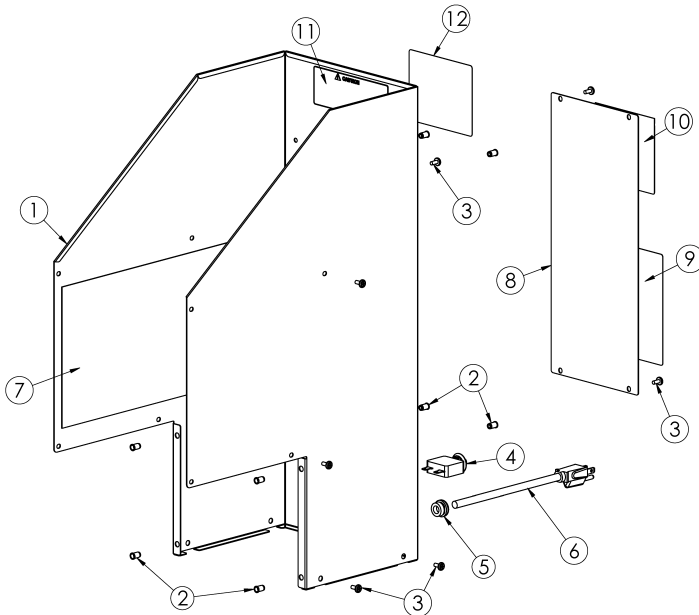
Parts Diagram and List (continued)

Models 250RH-2 & 250RH-3 Removable Hopper Exploded View



Item No.	Title	Part No.
1	Hopper, Removable	86251
3	Cap, Handle Top, Natural	86262
4	Washer, Nylon 75 X .443 x .032 thk	83141-01
5	Adapter, Drive	82282
6	Spring, Auger Drive	86046
7	Link, Drive	82267
8	Screw, 8-32x1/4 PH TR Zinc	83143
9	Auger Spout	82289
10	Screw, #8 x 1/2", PH PN, Thd Frm	82287
11	Assy, Slide Plate	82285
12	Shoulder Bolt, 1/4"x2.75"L, # 10-24	82286
13	Spring, Slide Plate	86261
14	Spacer, #8, Nylon	82288
15	Lid, RH Hopper	86252
17	1/4" SS Washer	82344

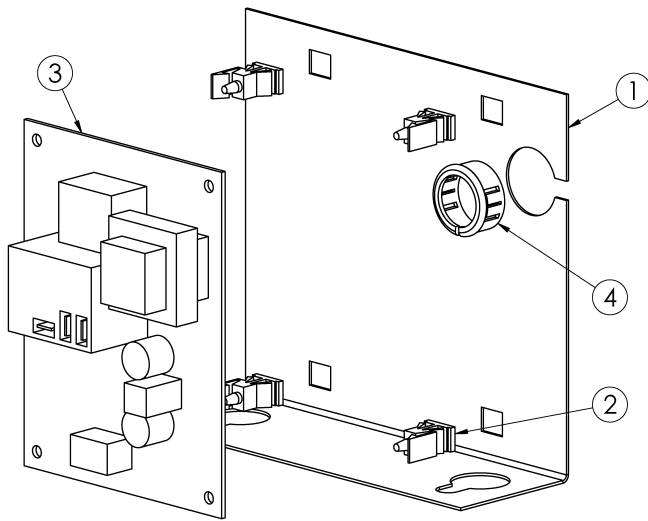
Models 250RH-2 & 250RH-3 Casing Assembly Exploded View



Item No.	Title	Part No.
1	Casing, 250RH	82275
2	Rivnut, 8-32 AKS4-832-80	82096
3	Scrw, 8-32 x 3/8 PH T/H S.S.	82097
4	Circuit Breaker, 10 Amp	86618
5	Strain Relief, Heyco, #1200-01	86071
6	POWER CORD, 115 VAC	86222
7	Sound Deadener, 7" x 15"	86312
8	Plate, Wiring Access	82308
9	Decal, Change Shear Disc	82317
10	Decal, Trouble Shooting	82316
11	Decal, Reinstall Hopper to Casing	82311
12	Decal, Warnings, RH Grinder	82319

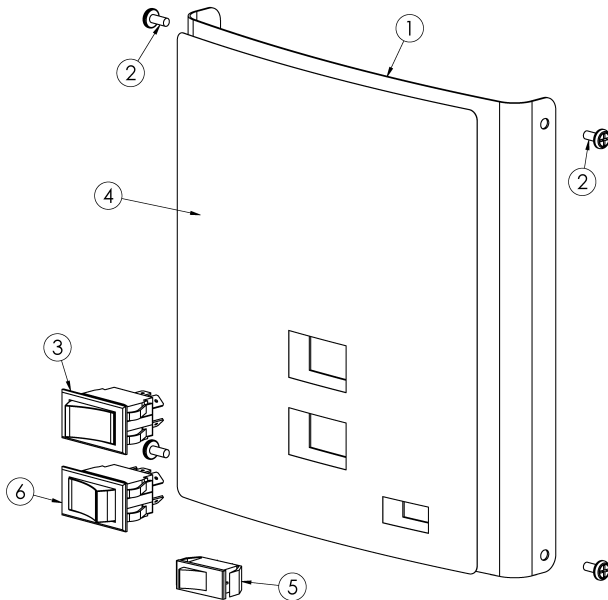
Parts Diagram and List (continued)

Models 250RH-2 & 250RH-3 Digital Timer Assembly Exploded View



Item No.	Title	Part No.
1	Bracket, Control Board	86038
2	STANDOFF, RVRS EDGEMOUNT	61266
3	Timer, Digital	86138
4	Bushing, Heyco Open/Closed	86039

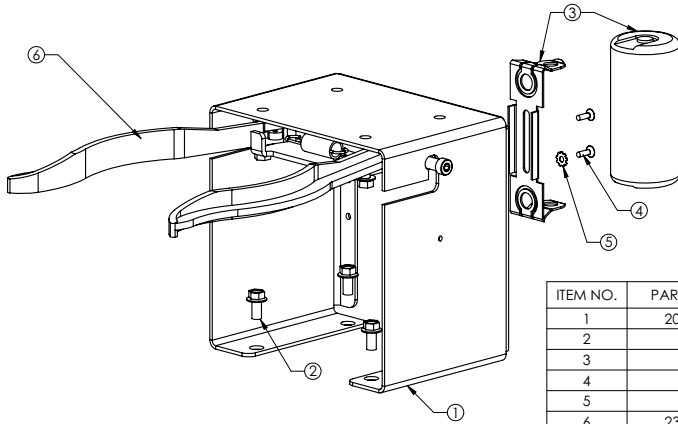
Models 250RH-2 & 250RH-3 Front Plate Assembly Exploded View



Item No.	Title	250RH-2	250RH-3
1	Plate, Front	82270	82270
2	Scrw, 8-32 x 3/8 PH T/H S.S.	82097	82097
3	Rocker Switch, Hopper	86075	86075
4	Decal, Front Plate	82306	82312
5	Switch,Rocker,N/O,White	70445	70445
6	Rocker Switch, Batch Size	86075	83231

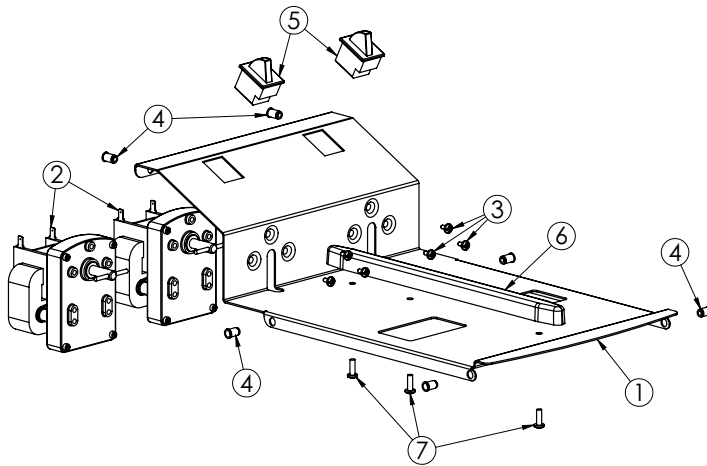
Parts Diagram and List (continued)

Models 250RH-2 & 250RH-3 Motor Mount Assembly Exploded View



ITEM NO.	PART NUMBER	QTY	DESCRIPTION
1	200-00045	1	BRACKET, MOTOR AND ARMS MOUNT
2	86872	8	BOLT, 1/4-20 x 5/8, HX HD
3	86144	1	CAPACITOR, 115/60
4	86808	2	SCRW, 8-32 X1/2" Ph, Ov, Znc.
5	86861	1	WASHER, LCK#12 EXT-ZNC PLTD
6	233-00000	1	ASSY, ARMS, 250RH

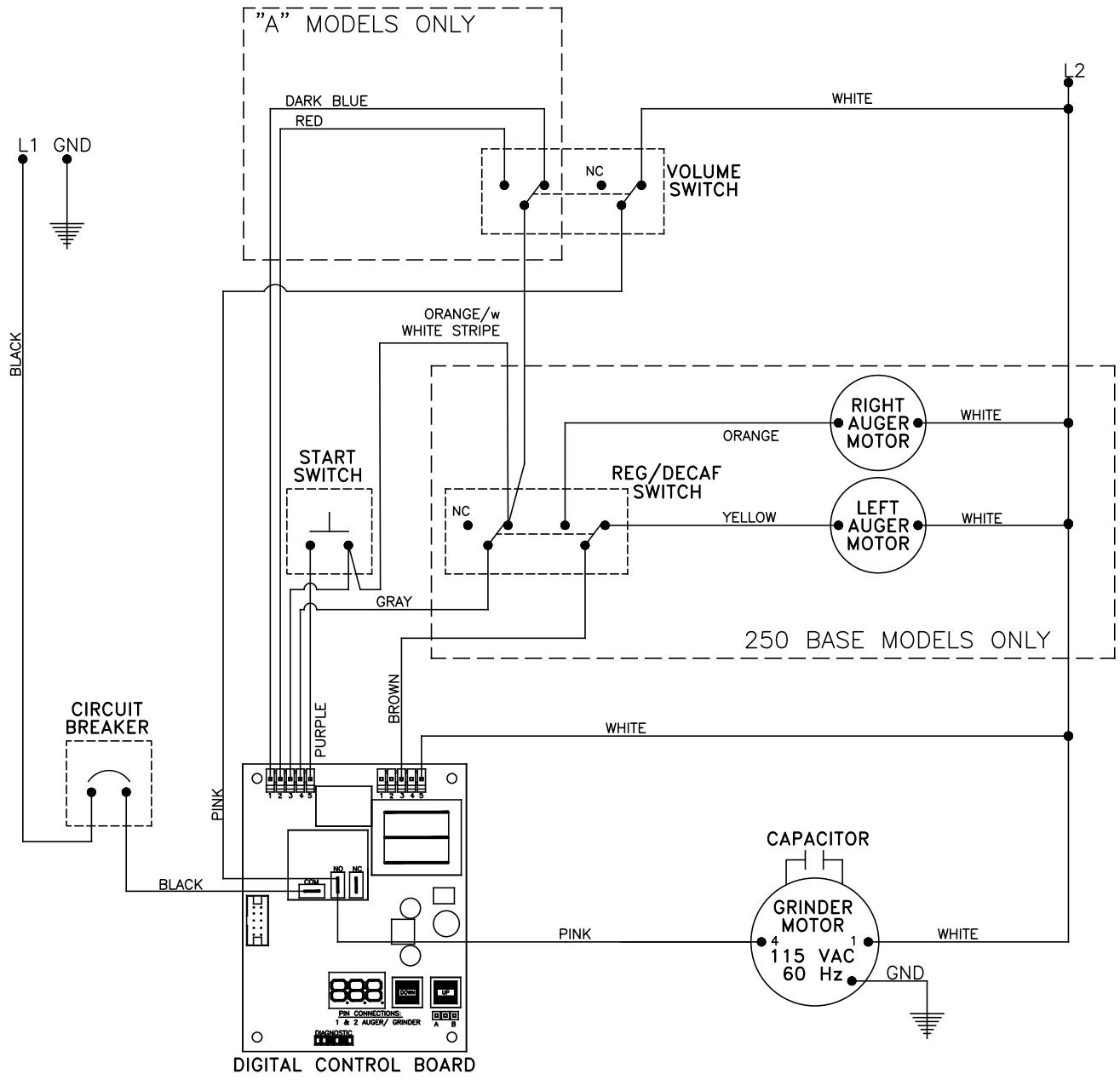
Models 250RH-2 & 250RH-3 Auger Motor Mount Assembly Exploded View



Item No.	Title	Part No.
1	Plate, Auger Motor Mount	86259
2	Motor, Auger	86050
3	Screw, 8-32x1/4, SL RD ZNC	86806
4	Rivnut, 8-32 AKS4-832-80	82096
5	Switch, Rocker, Whipper	1931
6	Hopper Divider	82309
7	Screw, #8 x 1/2", PH PN, Thd Frm	82287

Wiring Diagram

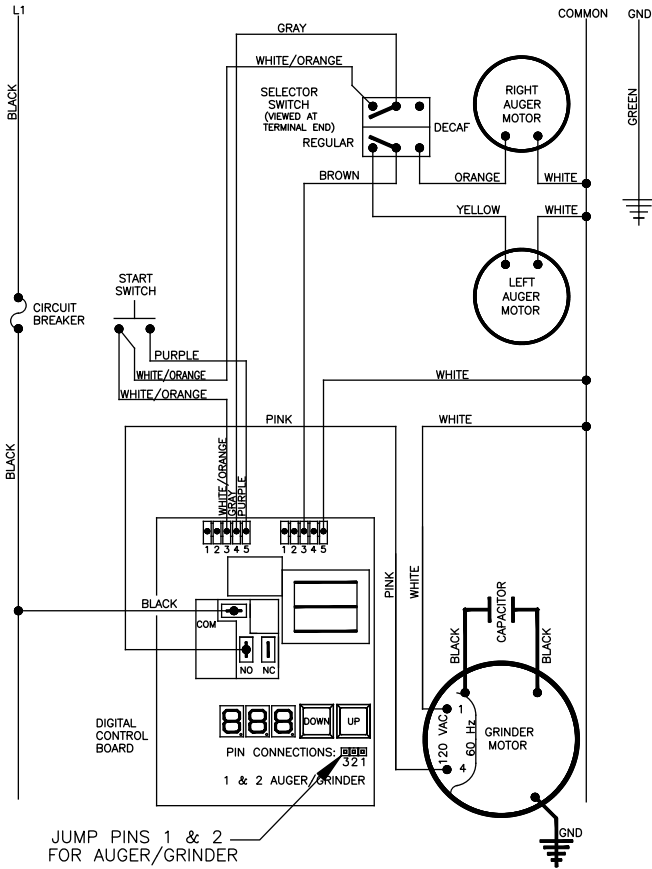
Model 250 120V, 60Hz Wiring Diagram



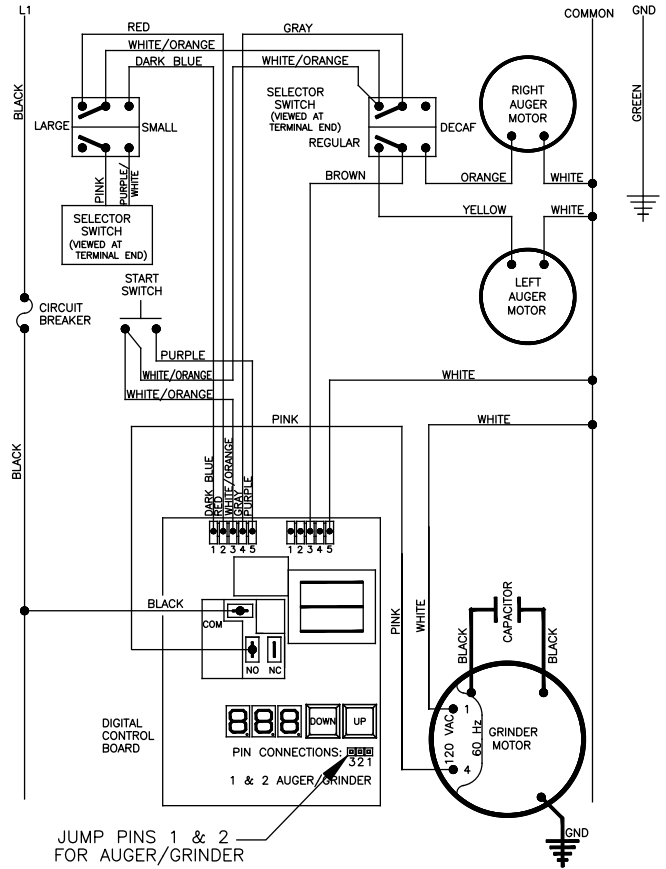
Wiring Diagram (continued)

Models 250 & 250-3A 120V, 60Hz Wiring Diagram

SCHEMATIC: 250-120Volt

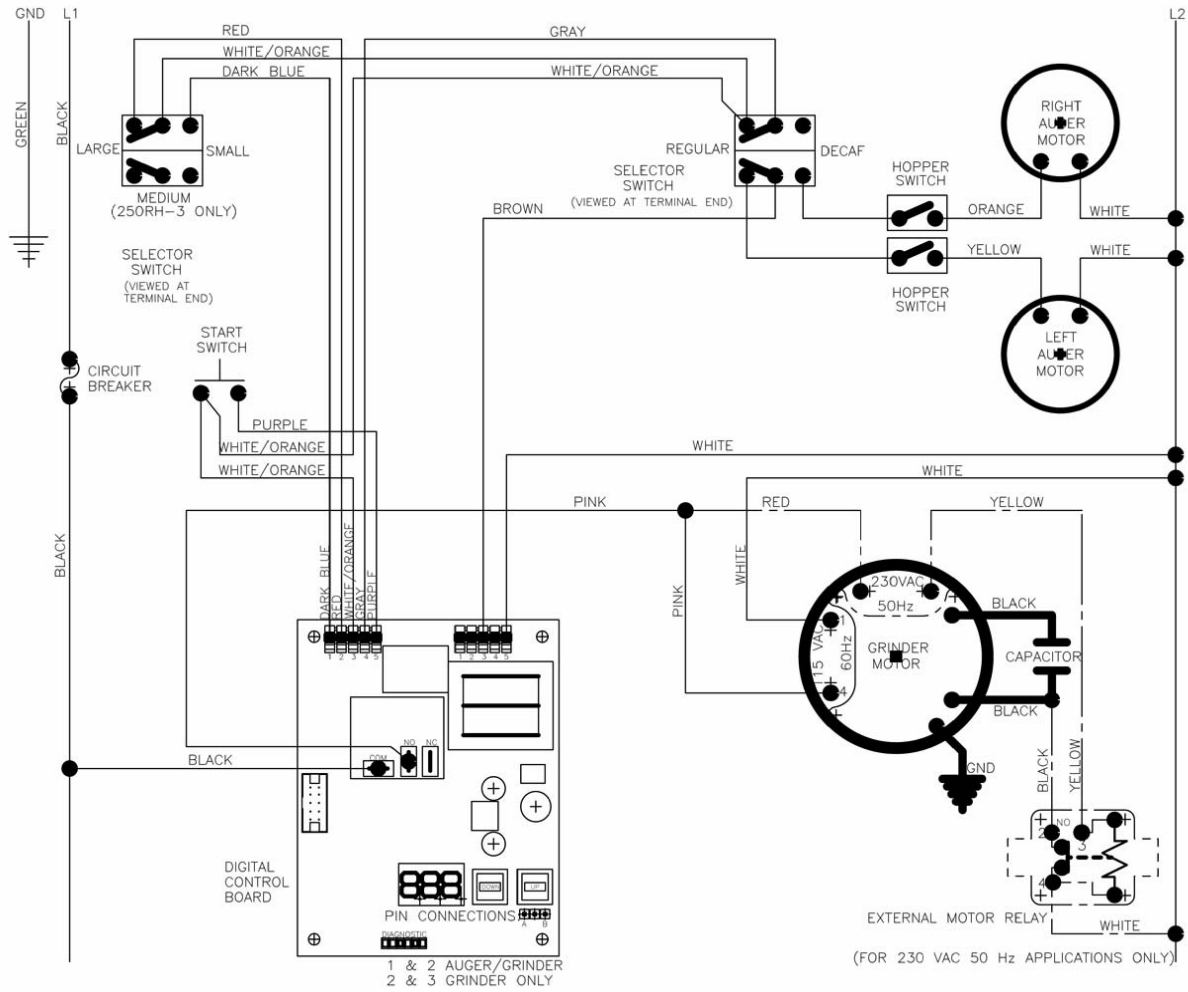


SCHEMATIC: 250-3A-120VoIt



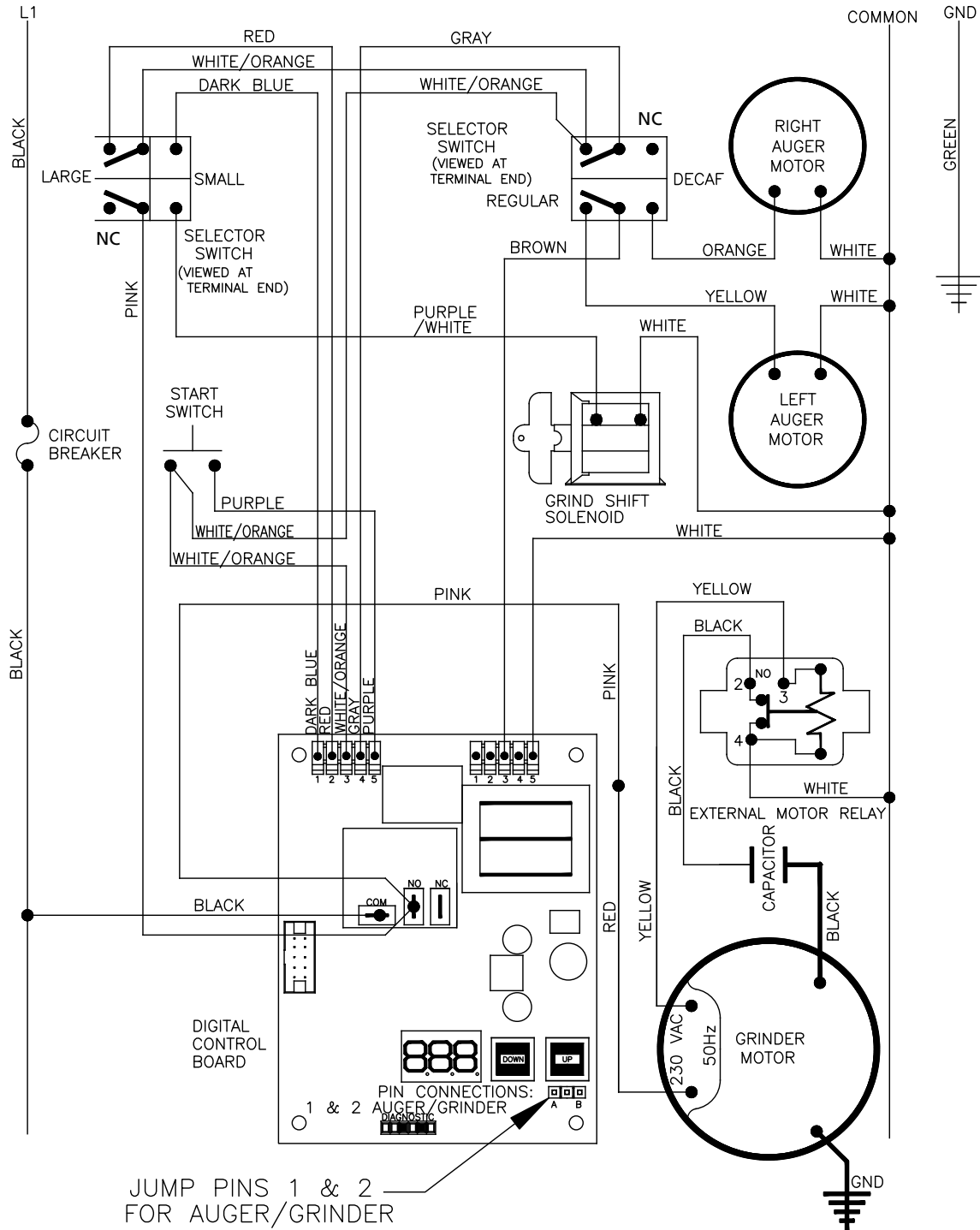
Wiring Diagram (continued)

Models 250RH-2 & 250RH-3 Wiring



Wiring Diagram (continued)

Models 250-230V Wiring Diagram



Grindmaster-Cecilware

4003 Collins Lane, Louisville, KY 40245 USA
 Phone: 502.425.4776 Toll Free: 800.695.4500
 Fax: 502.425.4664
 Web: gmcw.com Email: info@gmcw.com

