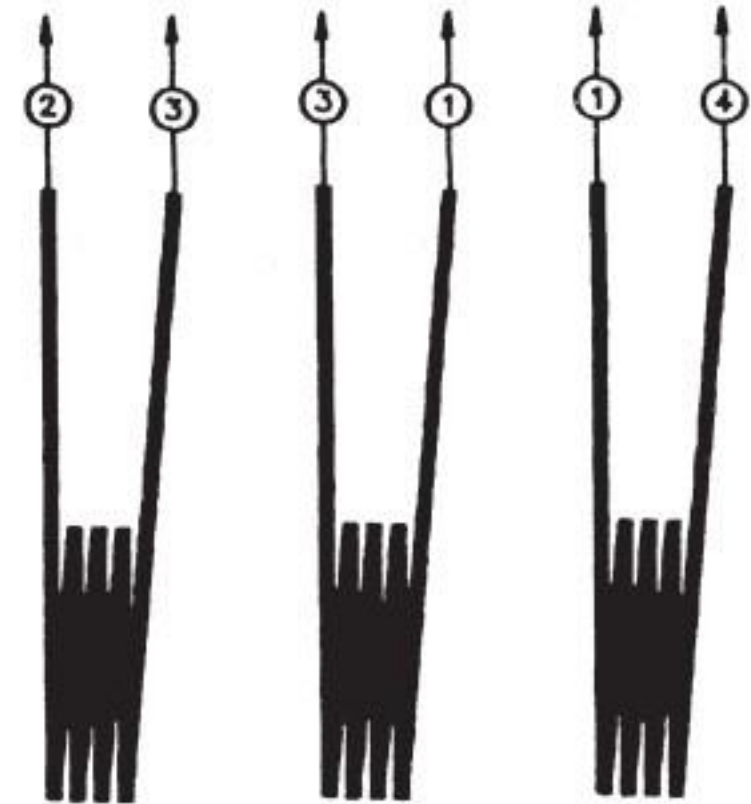
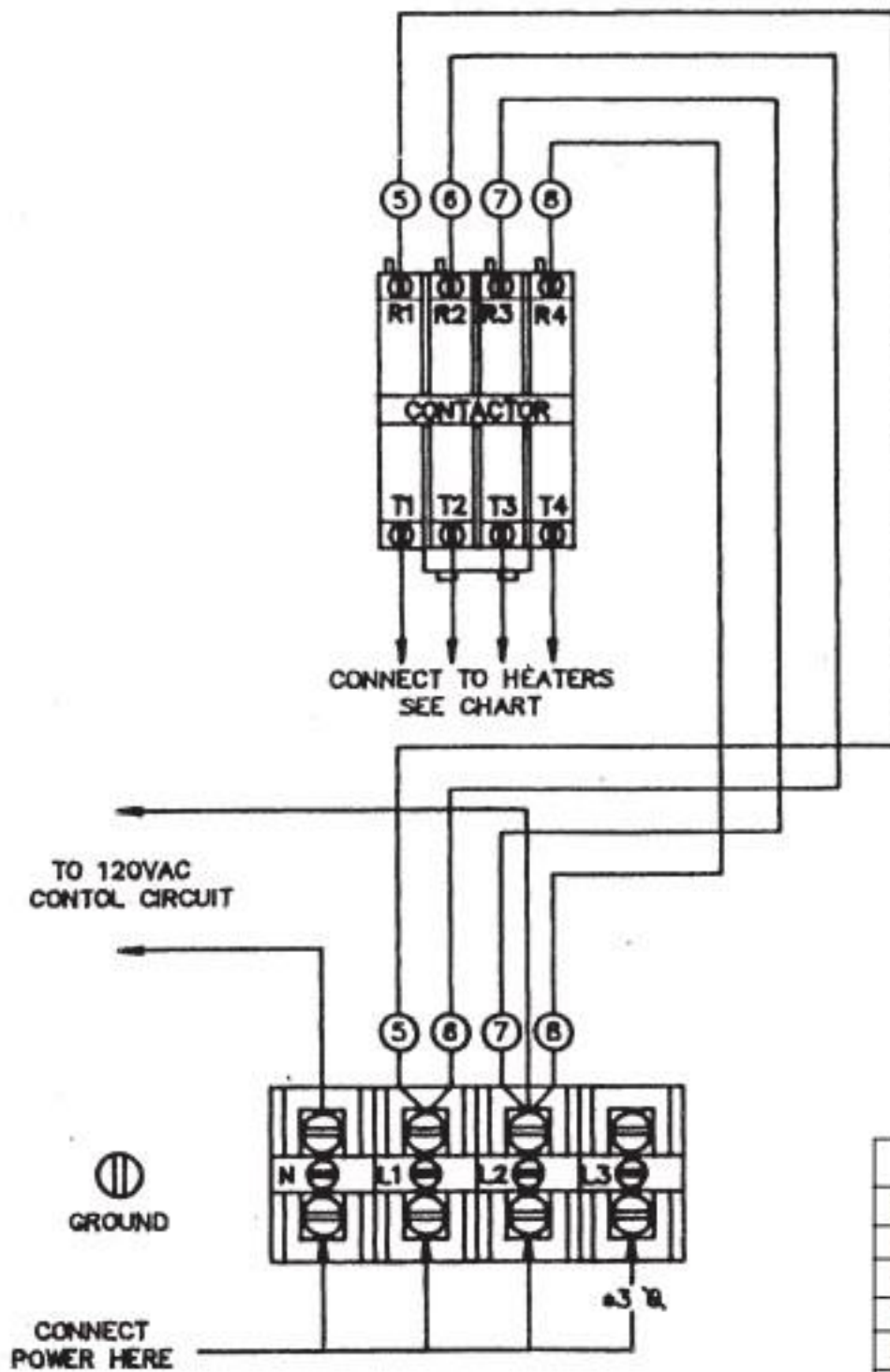


NOTE: USE WIRE NUT FOR ① - ① CONNECTION

T3	T3	T3	①	①	T4	A
T2	T3	T3	T4	T4	T4	B
①	T3	T3	①	①	T1	C
T3	T3	T3	T1	T1	T4	D
T2	T3	T3	T1	T1	T4	E
T2	T3	T3	T1	T1	T2	F

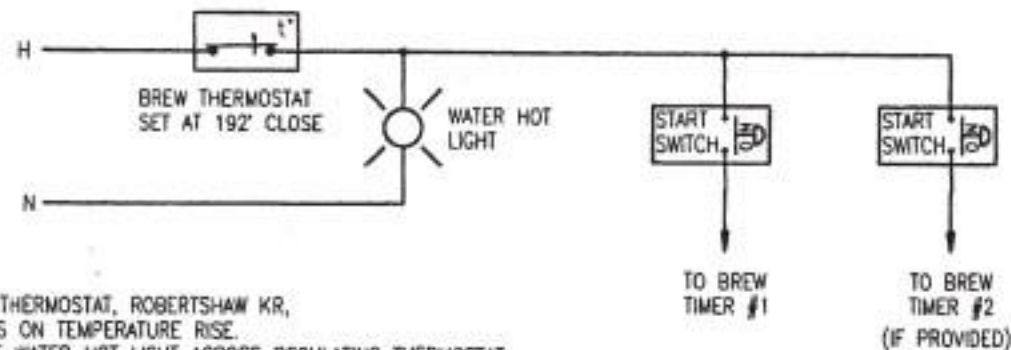


5000 WATT / 240V HEATERS

FOR THIS HEAT AND ELECTRIC SERVICE	WIRE PER FIG.
2.0 KW - 120/208V - 1 PH - 3 WIRE - 9 AMPS	A
2.5 KW - 120/240V - 1 PH - 3 WIRE - 11 AMPS	
4.0 KW - 120/208V - 1 PH - 3 WIRE - 18 AMPS	B
5.0 KW - 120/240V - 1 PH - 3 WIRE - 21 AMPS	
5.5 KW - 120/208V - 1 PH - 3 WIRE - 27 AMPS	C
7.5 KW - 120/240V - 1 PH - 3 WIRE - 31 AMPS	
7.5 KW - 120/208V - 1 PH - 3 WIRE - 38 AMPS	D
10.0 KW - 120/240V - 1 PH - 3 WIRE - 42 AMPS	
11.5 KW - 120/208V - 1 PH - 3 WIRE - 54 AMPS	E
15.0 KW - 120/240V - 1 PH - 3 WIRE - 63 AMPS	
11.5 KW - 120/208V - 3 PH - 4 WIRE - 31 AMPS	F
15.0 KW - 240V - 3 PH - 3 WIRE - 36 AMPS *	

* SEPARATE 120V REQUIRED FOR CONTROLS (3 AMP LOAD)

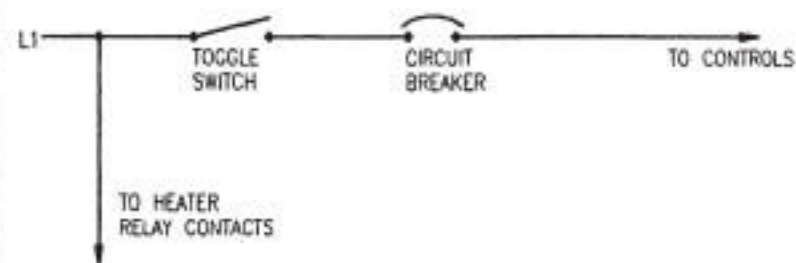
LOW TEMP/NO BREW, OPTION 47



NOTE:

BREW THERMOSTAT, ROBERTSHAW KR,
CLOSES ON TEMPERATURE RISE.
DELETE WATER HOT LIGHT ACROSS REGULATING THERMOSTAT

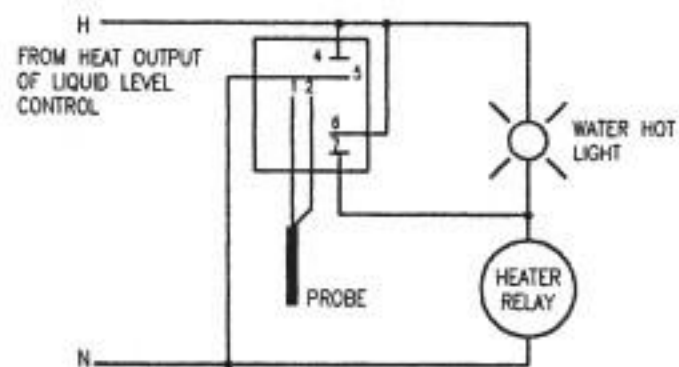
MASTER POWER SWITCH, OPTION C18



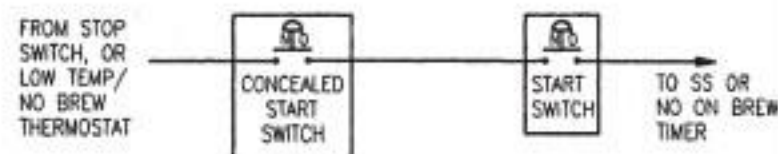
SOLID STATE THERMOSTAT, OPTION 202

NOTES:

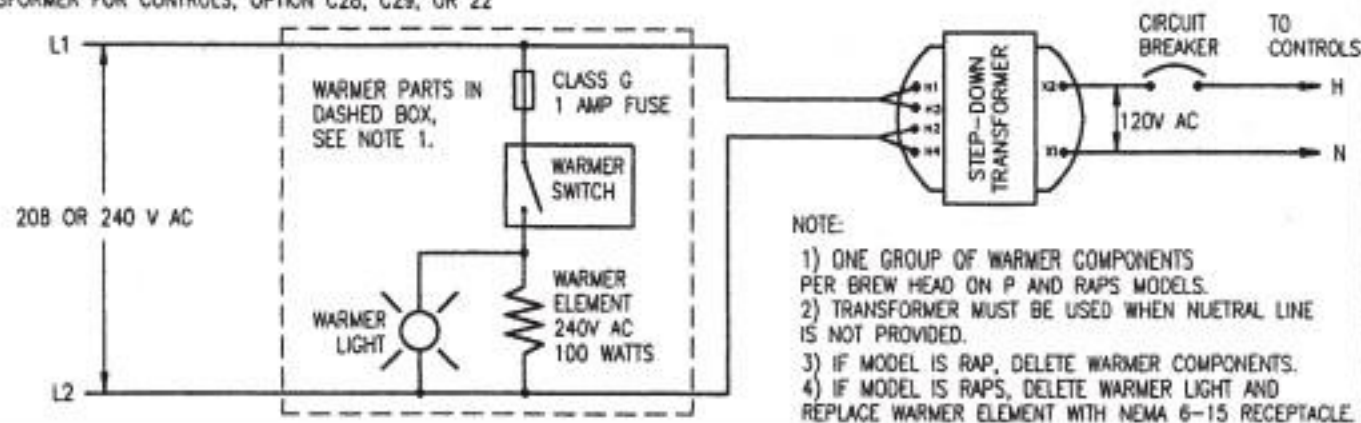
- 1) RESISTANCE TYPE PROBE SHOULD READ 1360 OHMS AT 200°F.
- 2) FACTORY SETTING IS 200°F.



CONCEALED BREW SWITCH, OPTION C12

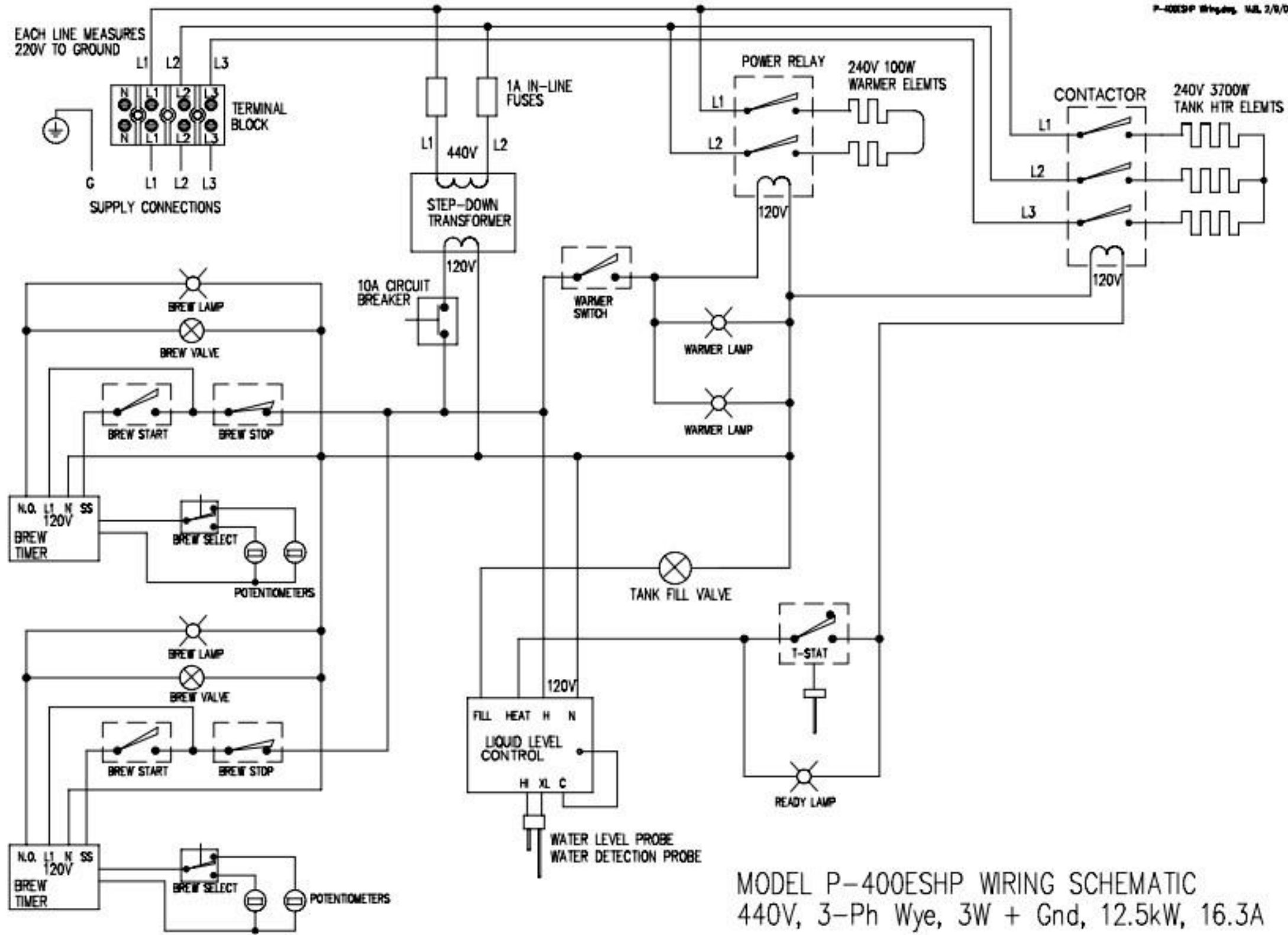


TRANSFORMER FOR CONTROLS, OPTION C28, C29, OR 22



NOTE:

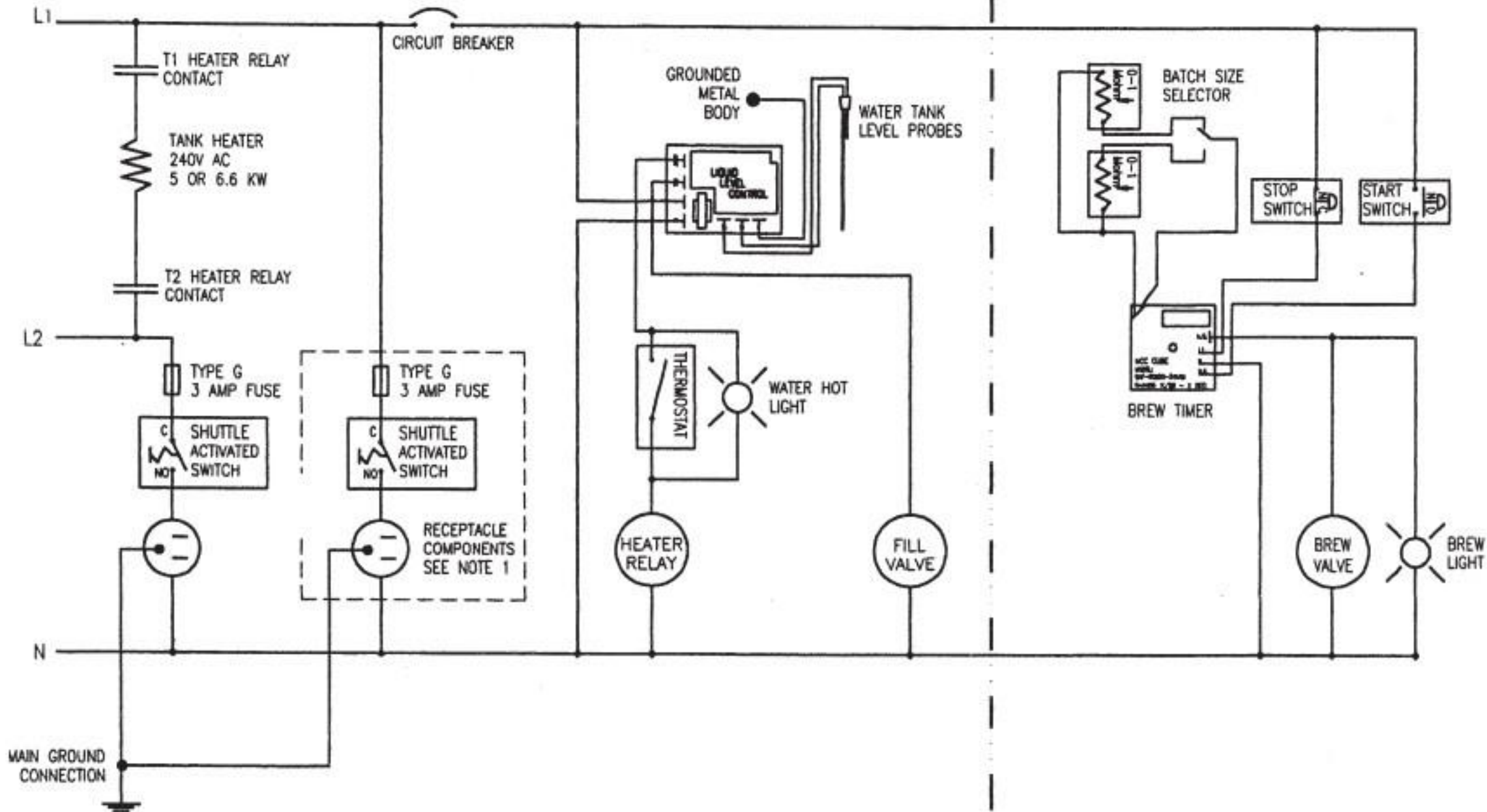
- 1) ONE GROUP OF WARMER COMPONENTS PER BREW HEAD ON P AND RAPS MODELS.
- 2) TRANSFORMER MUST BE USED WHEN NEUTRAL LINE IS NOT PROVIDED.
- 3) IF MODEL IS RAP, DELETE WARMER COMPONENTS.
- 4) IF MODEL IS RAPS, DELETE WARMER LIGHT AND REPLACE WARMER ELEMENT WITH NEMA 6-15 RECEPTACLE.



MODEL P-400ESHP WIRING SCHEMATIC
440V, 3-Ph Wye, 3W + Gnd, 12.5kW, 16.3A

POWER INLET, HEATING, AND FILLING
COMPONENTS
ONE GROUP PER BREWER

BREWING COMPONENTS
ONE GROUP FOR RAPS300
TWO GROUPS FOR RAPS400



POWER INLET, FILLING, AND HEATING COMPONENTS
ONE GROUP PER BREWER

BREWING COMPONENTS
ONE GROUP FOR RAP300
TWO GROUPS FOR RAP400

