

FOOD Mixer Operation Instruction

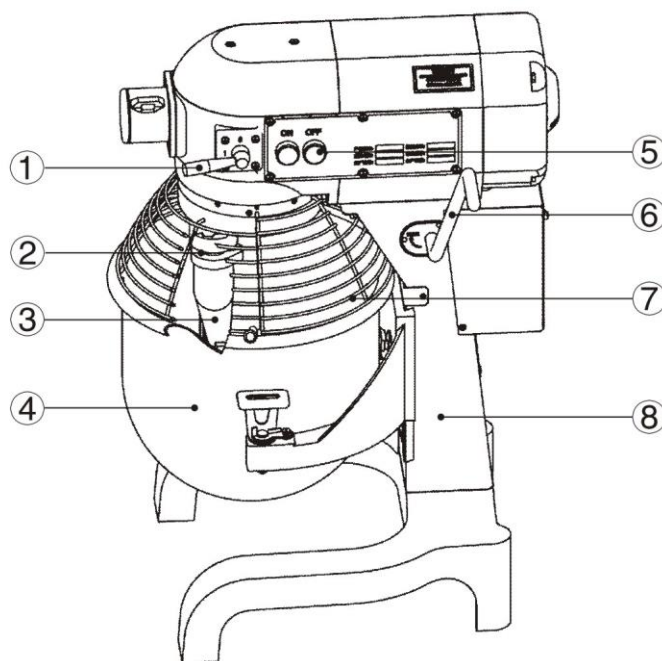
General Description

This is a kind of changing speed gear mixer. With its planetary stirring design, it has a compact structure, high efficiency, power saving and easy operation. It will be provided to you as an ideal assistant for bread and cake making.

Technical parameters

Name	Barrel Volume (L)	Power (KW)	Weight (Kg)	Speed of stirring shaft (r/min)			Overall Dimensions(mm)
				1stSpeed	2ndspeed	3rdspeed	
	10	0.5	75	108	195	355	485*410*635
	20	1.1	90	108	195	355	600*600*780
	30	1.5	180	91	166	282	700*620*1200

Main External Parts of Mixer



1. Gear change hand lever
2. Stirring shaft
3. Mixer
4. Stainless barrel
5. Power switch

6. Bent lever
7. Safety guard(may choose the fitting)
8. Support

Operation Instruction

- ① Standard power supply V/ Hz AC. (Please use a plug with 3 wide contacts and good grounding.)
- ② Installation of Mixer: Put the stirring shaft 2 in Mixer 3 and rotate it in clockwise direction.
- ③ Starting procedure: Pull the gear change hand lever 1 to position 1 before starting, then turn on the power switch 5 and set the speed required. After the mixer is in normal operation, pull the hand lever 6 to the highest point and lift the support 7 to the highest position.
- ④ Speed transformation: if you want to change the speed, please turn off the power switch 5 first, and then pull the gear change hand lever 1 to the position required.
- ⑤ Shutting down: when the operation is completed, turn off the power switch 5 first, then pull the gear change hand lever 1 to position 1, and pull back the hand lever 6 to the lowest point and finally disconnect power supply.

Accessories and Functions

- ① Spherical mixer: Used for stirring of liquid materials, such as cream and egg. Recommended speed: mid or high speed.
- ② Plate mixer: Used for stirring of paste, powder, and fragmental materials, such as stuffing, cake dough. Recommended speed: Start with low speed, end with mid speed.
- ③ Hook mixer: Used for stirring of more sticky materials, such as dough. Recommended speed: low speed.

Notes

- ① The power socket must be provided with a good ground wire to guarantee the mixer's good grounding through it. There will be an electric shock if no ground wire or an improper grounding is mounted. The ground wire can never be connected with gas pipe, water pipe, lightning rod or telephone line. Electric leakage should be checked after installation. Once the power line is damaged, the user must replace them in the special maintenance Service Company.
- ② Don't put your hand into the stirring barrel during operation. Power supply should be disconnected before the mixer is going to be installed.
- ③ Don't operate the mixer beyond the time limit to prevent reduction of its service life.
- ④ The mixer should be mounted on a stable and clean place, Keep it away from overheated or over wet places and away from equipment which has strong electromagnet or can produce strong electromagnet.
- ⑤ Keep the machine clean constantly. Disconnect power supply before maintenance. Clean it with a piece of soft and a bit wet cloth. Don't clean it with liquid or spraying detergent.

Maintenance

Clean the bowl and stirrer daily or after use to maintain hygiene standard. Clean the mixer with wet soft cloth. Do not use liquid or corrosive spraying detergent to clean the mixer.

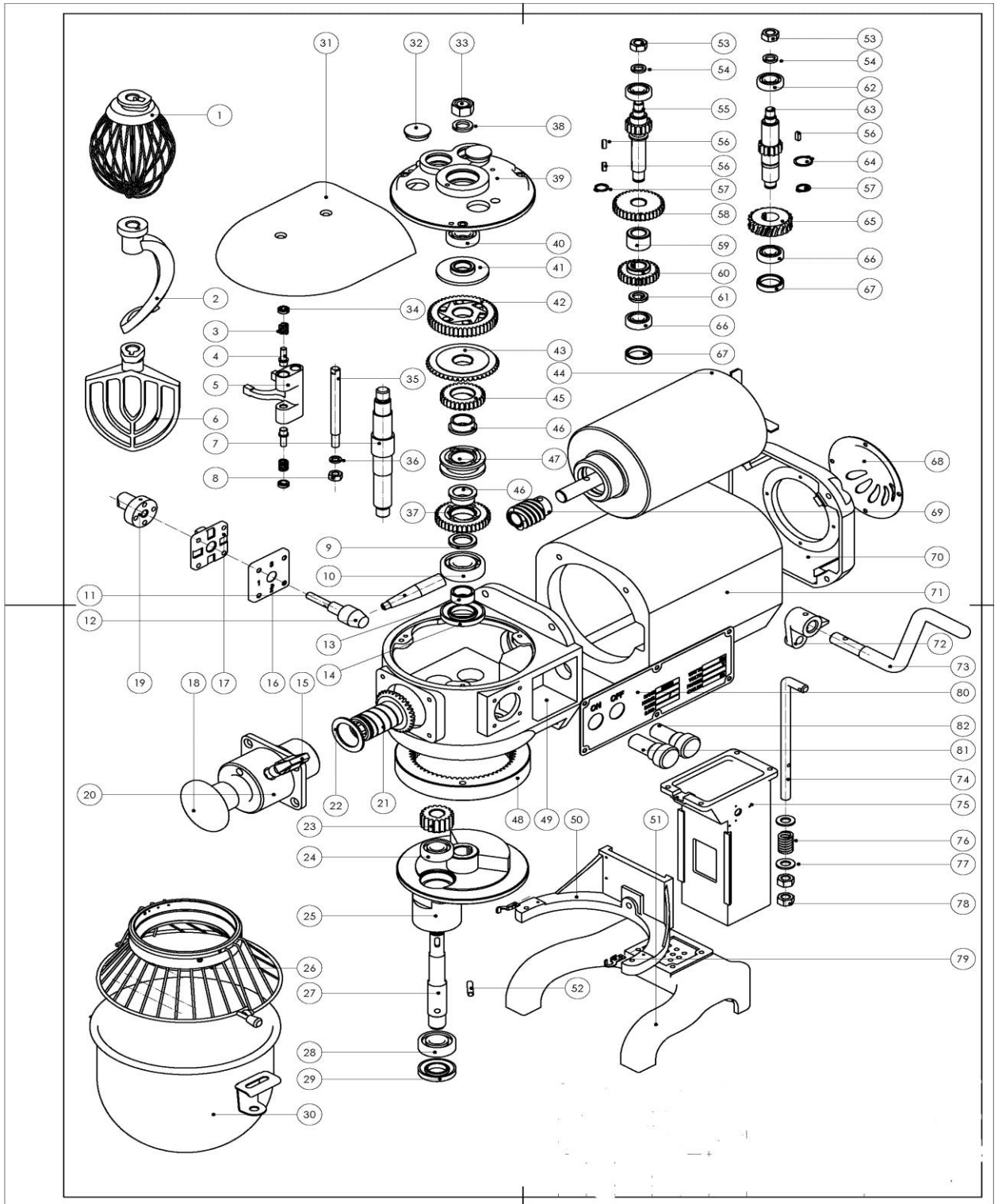
The transmission gear box is greased in factory. Check the greasing each 6 months. To add or refill grease, open the top cover, then fill grease from aperture or replace the grease directly.

TROUBLE SHOOTING

Problems	Causes	Solutions
Tool shaft does not rotate after starting the machine	Loosen electric wiring	Check electric wiring tighten those loose connects
Oil leakage	The seal rings are worn out	Replace seal rings
Motor temperature raises while reduced output speed	Too low voltage	Check the power supply
	Over-loaded	Reduce load
	The speed of mixing is too high or use a wrong stirrer	Select a suitable speed and stirrer
The mixing knocks with the bowl	The stirrer or bowl is deformed	Repair or replace the stirrer or bowl
Abnormal noise and high temperature from gearbox	Insufficient lubrication	Add or replace the grease

Warning!

If the equipments out of function, please make sure be serviced by professional person of please turn to special service point!

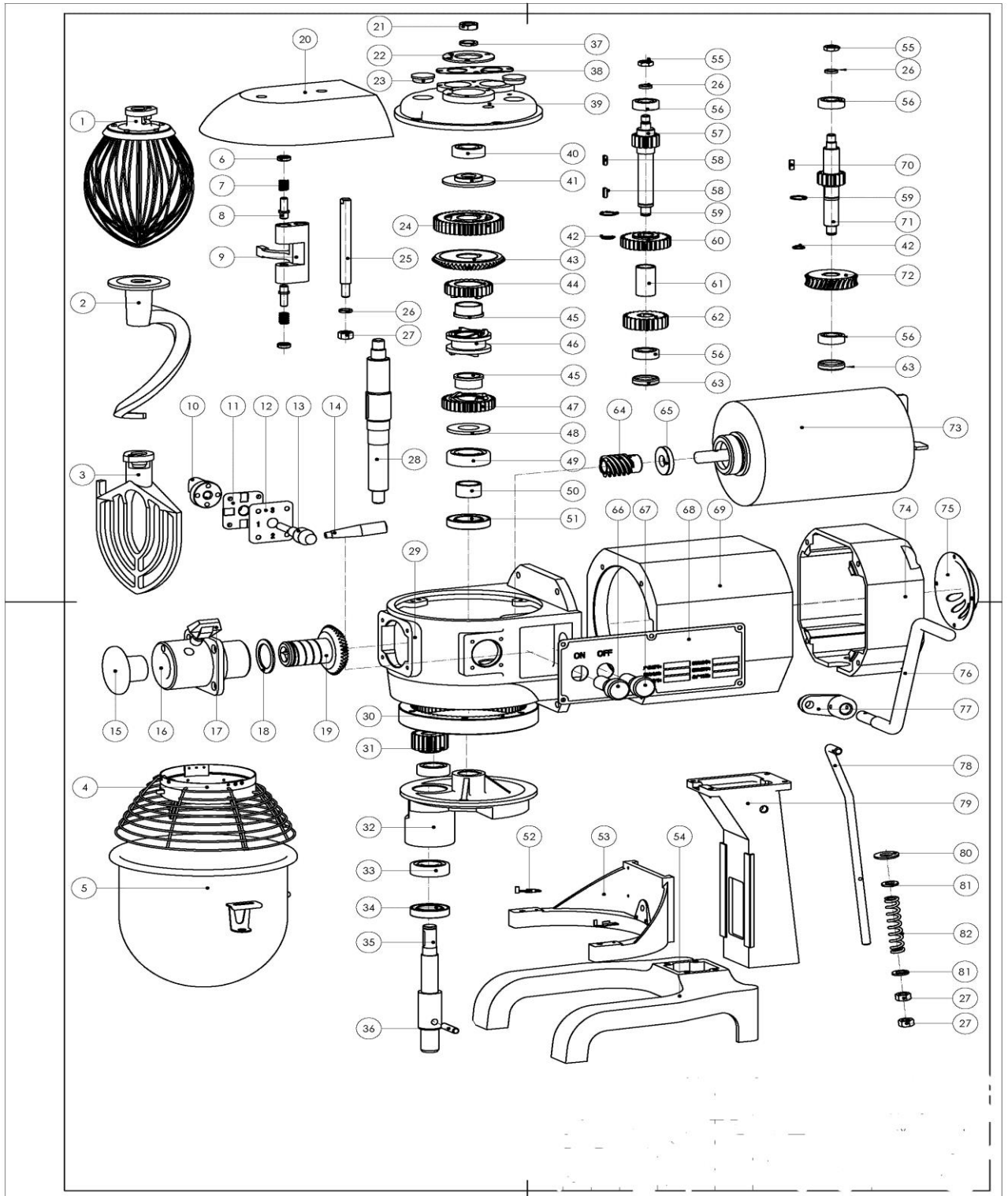


PARTS OF 10 L MIXERS

SER.NO.	PART.NO	PART NAME	SER.NO	PART.NO	PART NAME
1	40306000	Wire whip	42	40301200	Super machine parts

2	40305900	Hook	43	40307400	Taper gear
3	50406002	Spring	44	50501010	Motor
4	50405020	Pin shaft	45	40301400	Combination of gear
5	40303500	Shifting yoke	46	50405019	Bushing
6	40305800	Flat Beater	47	40301500	Claw-type clutch
7	40301900	Main shaft	48	40302600	Inner gear
8	50304005	Nut	49	40302500	Gear box
9	40301800	Lining ring	50	40304200	Support
10	50301006	Bearing 6204	51	40304400	Base
11	40303300	Speed handle	52	50306023	Retainer-spring
12	40303100	Handle shaft	53	50304018	Nut
13	40303800	Lining ring	54	50308006	Spring washer 10
14	50310006	Oil seal	55	40300600	Gear shaft
15	50405065	Locking bolt	56	50313012	Key 4x12
16	40303200	Block handle	57	50312002	Circlips for shaft 12
17	50405016	Block handle cover	58	40300700	Gear
18	50405015	Plug	59	40300800	Lining ring
19	40303000	Cam-gear shifter	60	40300900	Gear
20	50601005	Attachment hub	61	40301000	Ring
21	40307200	Taper gear wheel	62	50301001	Bearing 6001
22	40302400	Circlips for shaft	63	40300400	Shaft worm gear
23	40302700	Planet gear	64	50312006	Circlips for shaft
24	50301004	Bearing 6202	65	40300500	Worm gear
25	40302900	Operating shelf	66	50312006	Bearing 6001

26	40306400	Safety guard	67	40300500	Nausea cover
27	40302800	Working shaft	68	50301001	Back guard
28	50301005	Bearing 6203	69	40303600	Worm pole
29	50310003	Oil seal 20x40x7	70	40300100	Back cover
30	50401003	Bowl	71	40300200	Motor box
31	50603045	Cover	72	40305501	Crank lever
32	50405032	Plug	73	40305600	Handle
33	50304020	Nut	74	40305200	Connecting rod
34	50405021	Control nut	75	40303900	Stud
35	40303400	Declutch shift shaft	76	50406001	Spring
36	50308005	Spring washer 8	77	50307006	Clamp plate 10
37	40301700	Gear	78	50304006	Nut M10
38	40301200	Spring washer 14	79	50405074	Press board
39	40307400	Support	80	50402109	Brand
40	50501010	6003	81	50506026	Start switch
41	40301400	Spindle boring cover	82	50506029	Stop switch

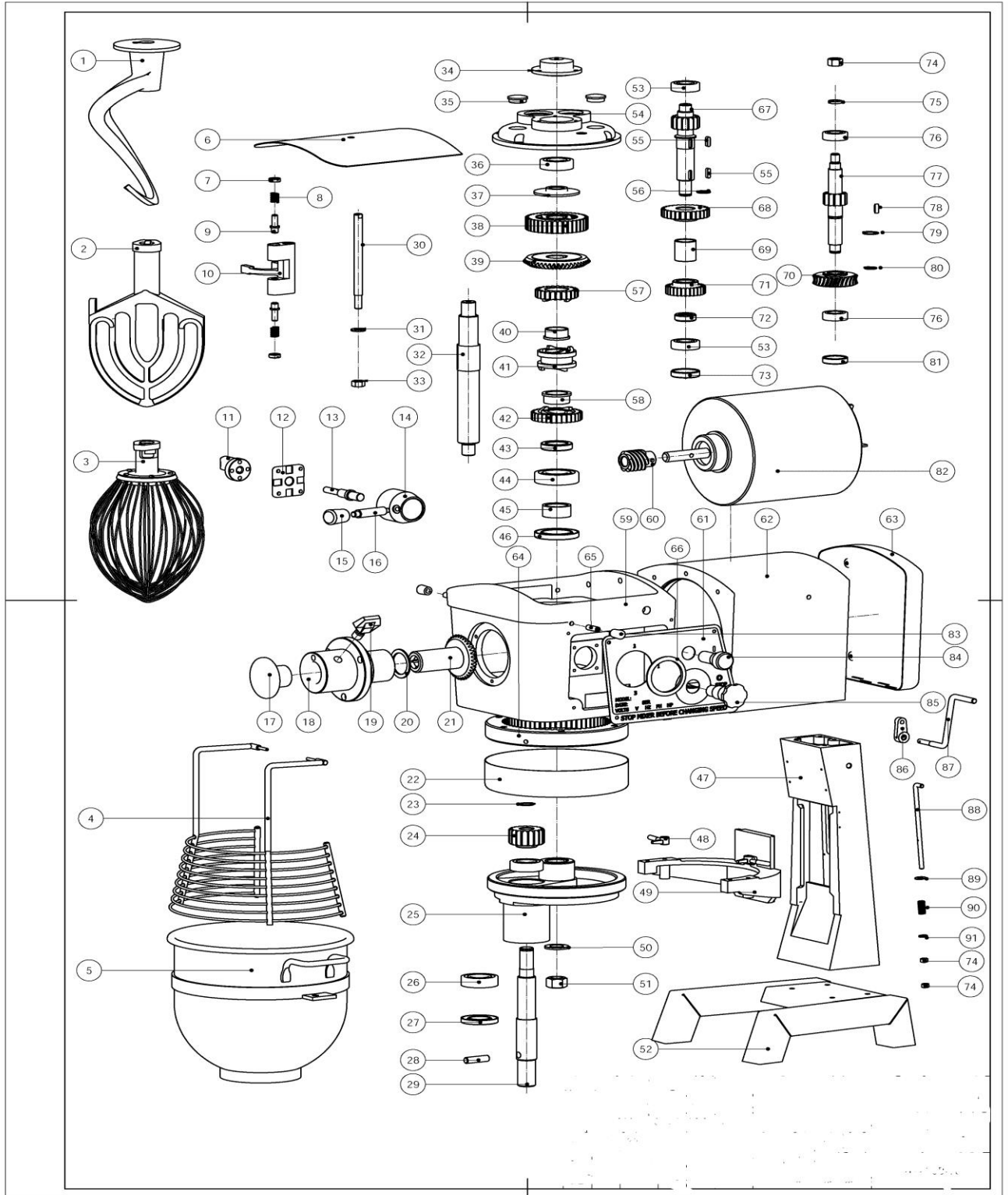


PARTS OF 20 L MIXERS

SER.NO.	PART.NO	PART NAME	SER.NO	PART.NO	PART NAME
1	40506300	Wire whip	42	50312002	Circlips for shaft 12

2	40506500	Spiral dough hook	43	40507200	Taper gear wheel
3	40506200	Flat Beater	44	40501700	Gear
4	40506700	Safety guard	45	50405041	Bushing
5	50401006	Bowl assembly	46	40501800	Sleeve
6	50405064	Plunger-shifter yoke	47	40502000	Claw type gear wheel
7	50406021	Spring	48	40502100	Ring
8	50405029	Pin shaft	49	50301007	Bearing 6205
9	40503600	Shifting yoke	50	40502200	Bushing
10	40502900	Cam-gear shifter	51	50310010	Oil seal 30X52X10
11	40503100	Plate-shifter index	52	50405074	Press board
12	50405016	Handle-shifter cover	53	50601026	Support
13	40503300	Handle-shifter	54	50601027	Case
14	40303300	Speed handle	55	50304018	Nut
15	50405015	Plug	56	50301003	Bearing
16	40507100	Attachment hub	57	40501100	Mid-gear wheel
17	50405065	Tighten handle	58	50313013	Key 4*14
18	50405026	Ring	59	50312006	Circlips for shaft 18
19	40506600	Taper gear wheel	60	40501000	Gear
20	50403009	Top cover	61	40500600	Bushing
21	50304020	Nut	62	40500500	Gear
22	50405052	Pressing plate	63	40503800	Plug cover
23	50405032	Plug cover	64	50405025	Worm pole
24	40501500	Super machine parts	65	50310002	Oil seal
25	40503500	Declutch shift shaft	66	50506026	Green button

26	50308006	Spring washer 10	67	50506029	Red button
27	50304006	Nut M10	68	50402024	Brand
28	40501400	Main shaft	69	40500300	Motor box
29	40502300	Gear box	70	50313015	Key 5*14
30	40502400	Internal gear	71	40500900	Shaft worm gear
31	40502600	Gear	72	40500800	Worm wheel
32	40502700	Operating shalf	73	50501016	Motor
33	50301006	Bearing	74	40500200	Back housing
34	50310008	Oil seal 28X47X10	75	40500100	Back Cover
35	40502800	Working shaft	76	40505600	Handle-shifter
36	50306030	Retainer-pin 8x35	77	40505400	Crank lever
37	50308008	Spring washer 14	78	40505200	Connecting rod
38	50405051	Pressing plate	79	40504100	Stud
39	40500700	Transmission shaft support	80	50307008	Clamp plate
40	50301005	Bearing 6203	81	50307006	Clamp plate
41	40501300	Spacer-lower	82	50406005	Spring



PARTS OF 30 L MIXERS

SER.NO.	PART.NO	PART NAME	SER.NO	PART.NO	PART NAME
1	40705900	Hook	47	40704000	Body housing
2	40705800	Beater	48	40704200	Bowl hold kits

3	40706000	Wire Whip	49	40705100	Support
4	40708200	Safety guard	50	50307009	Clamp plate 18
5	50401008	Bowl	51	50304012	Nut M8*1.5
6	40707300	Top cover	52	50405038	Base
7	50405064	Screw	53	50301005	Bearing 6203
8	50406021	Spring	54	40700500	Transmission shaft support
9	50405029	Pin shaft	55	50313016	Key 5*16
10	40703400	Shifting yoke	56	50312005	Circlips for shaft 17
11	40502900	Cam-gear shifter	57	40701700	Gear
12	40503100	Plate-shifter index	58	50405042	Bushing
13	40700200	Handle-shifter	59	40701400	Gear box
14	40700300	Handle set	60	50405025	Worm pole
15	50405044	Turn set M6	61	50402037	Brand
16	40700100	Speed handle	62	40700400	Motor
17	50405015	Plug attachment hub	63	50405037	Back housing
18	40701900	Attachment hub	64	40702400	Internal gear
19	50405065	Spring	65	50305075	Tighten yoke M8x25
20	50405026	Circlips	66	50405049	Crank lever
21	40701800	Gear	67	40700900	Handle-shifter
22	50405033	Hood ring	68	40700800	Gear
23	50312007	Circlips for shaft 19	69	40703200	Bushing
24	40702600	Planet gear	70	40700700	Worm wheel
25	40702700	Operating shelf	71	40702900	Mid-gear wheel gear
26	50301007	Bearing 6205	72	40703100	Washer
27	50310009	Oil seal	73	40703000	Plug cover 1
28	50306036	Pin 10*38	74	50304007	Nut M12
29	40702800	Working shaft	75	50308007	Spring washer 12
30	40703600	Declutch shift shaft	76	50301004	Bearing 6202
31	50307006	Plate 10	77	40700600	Gear wheel

32	40701300	Main shaft	78	50313016	Key 5x15
33	50304006	Nut M10	79	50312008	Circlips for shaft 20
34	40701100	Top batter valve cap	80	50312003	Circlips for shaft 15
35	50405032	Flat valve cap	81	40703300	Plug cover 2
36	50301006	Bearing 6204	82	50501031	Motor
37	40701200	Main shaft plug cover	83	50405050	Rubber set
38	40701500	Super machine parts	84	50506026	Green button
39	40701000	Gear	85	50506030	Red button
40	50405041	Bushing	86	40705500	Crank lever
41	40702000	Sleeve	87	40705700	Handle-shifter
42	40702100	Gear	88	40705300	Connecting rod
43	40702200	Clamp plate	89	50307008	Clamp plate 14
44	50301008	Bearing 6206	90	50406022	Spring
45	40702300	Bushing	91	50307007	Clamp plate 12
46	50310015	Oil seal 40*62*8			