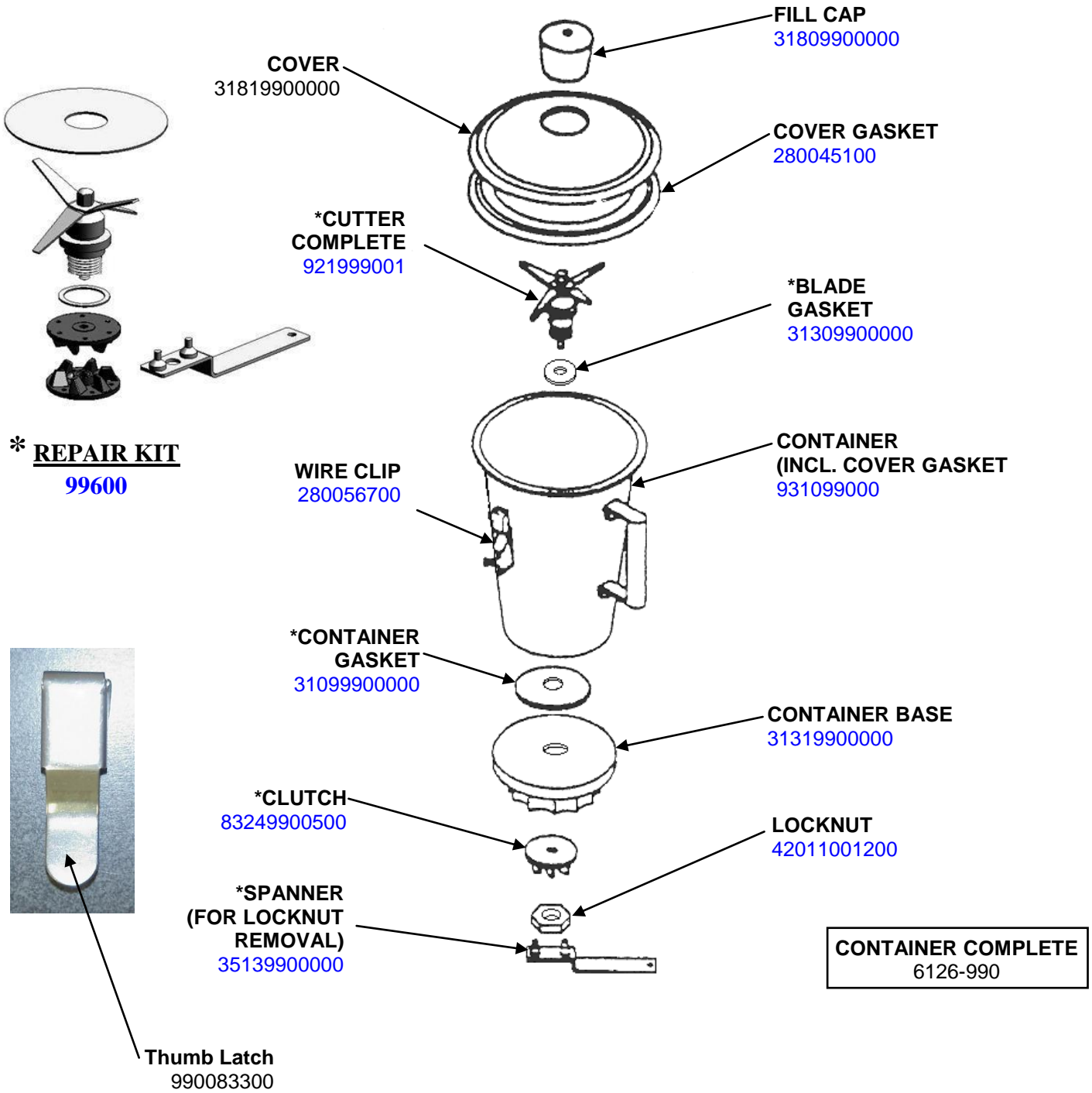



Replacement Parts Diagram Model 990 (Series A-E)

PROPRIETARY RIGHTS NOTICE This document and all information contained within it is the property of Hamilton Beach Brands, Inc. (HBB). It is confidential and proprietary and has been provided to you for a limited purpose. It must be returned or destroyed upon request. Disclosure, reproduction or use of this document and any information contained within it, in full or in part, for any purpose is forbidden without the prior written consent of HBB. No photographs may be taken of any article fabricated or assembled from this document without the prior written consent of HBB.

CONTAINER ASSEMBLY



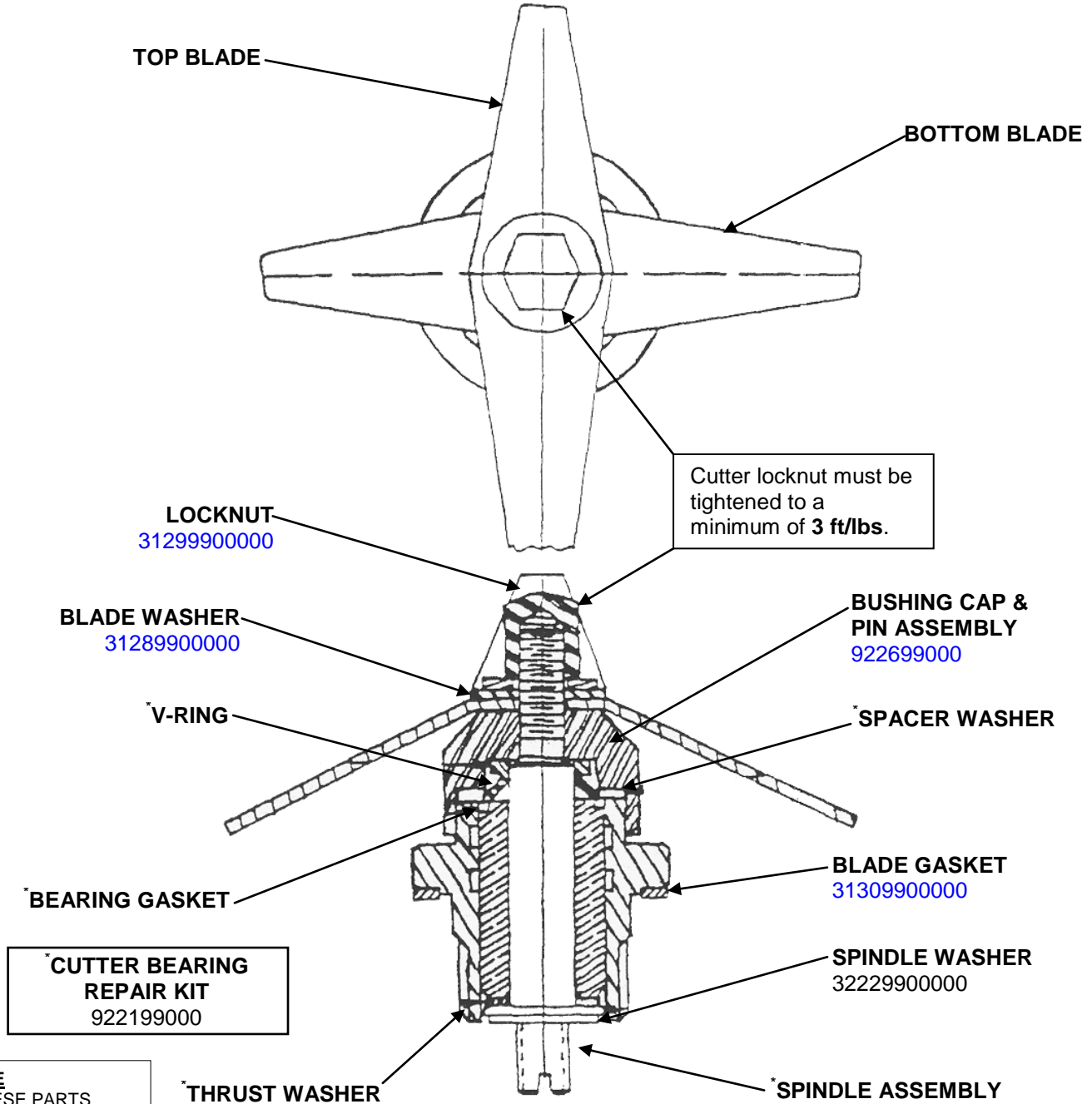
 <p>Hamilton Beach 4421 Waterfront Drive Glen Allen, VA 23060</p>	Revision Description: Correct inconsistencies		Revision Date: 2/17/14		Approved by: DOC4465	
	Request Number:		Page: 1 of 4	Document #:	510001900	Rev: D
	Issue Code(s):	CS, SP				

Replacement Parts Diagram

Model 990 (Series A-E)

PROPRIETARY RIGHTS NOTICE This document and all information contained within it is the property of Hamilton Beach Brands, Inc. (HBB). It is confidential and proprietary and has been provided to you for a limited purpose. It must be returned or destroyed upon request. Disclosure, reproduction or use of this document and any information contained within it, in full or in part, for any purpose is forbidden without the prior written consent of HBB. No photographs may be taken of any article fabricated or assembled from this document without the prior written consent of HBB.

CUTTER ASSEMBLY



NOTE
* THESE PARTS INCLUDED IN:

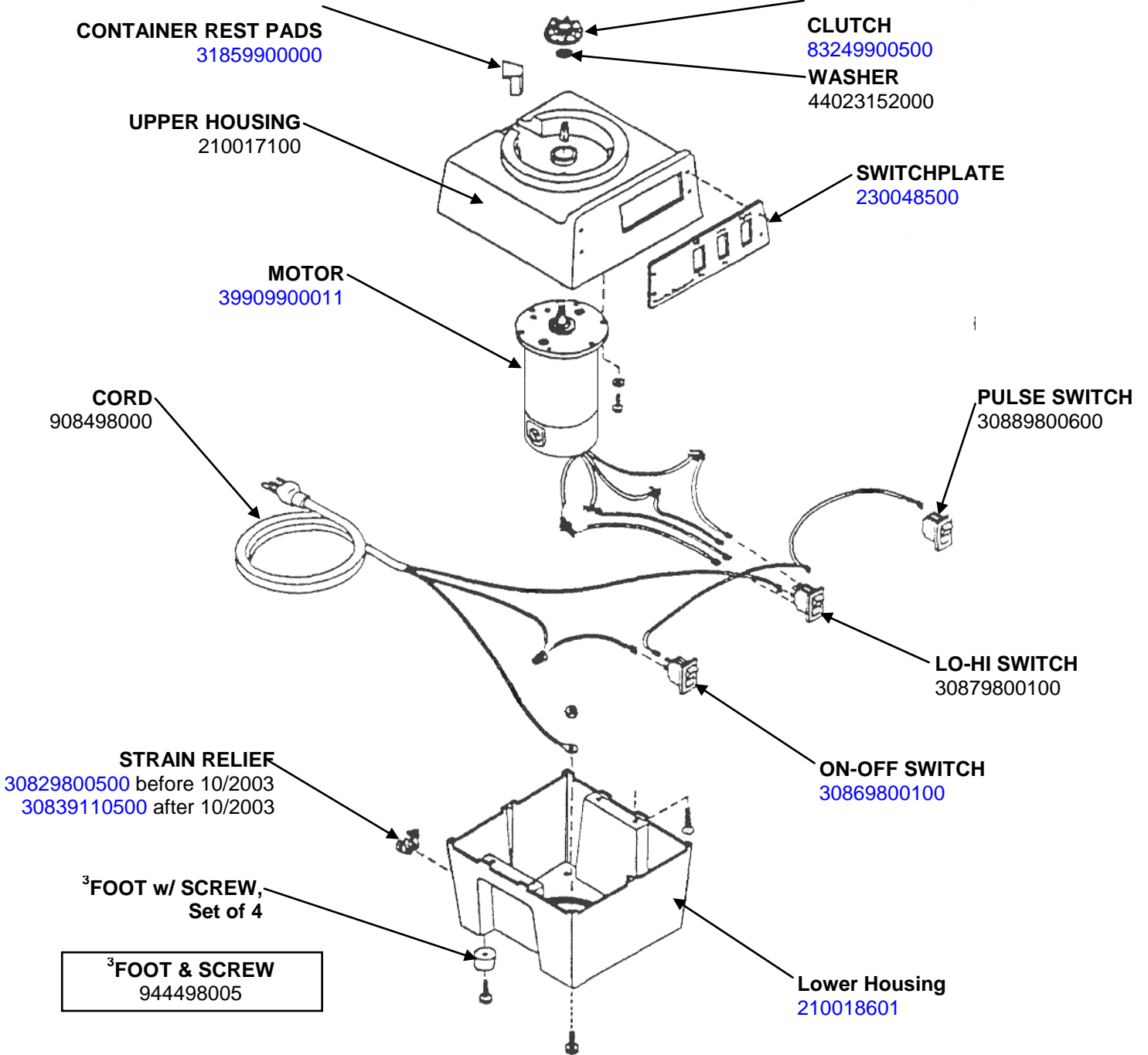
- CUTTER BEARING REPAIR KIT 922199000


<p>Hamilton Beach 4421 Waterfront Drive Glen Allen, VA 23060</p>	Revision Description: Correct inconsistencies		Revision Date: 2/17/14		Approved by: DOC4465	
	Request Number:		Page: 2 of 4	Document #:	510001900	Rev: D
	Issue Code(s):	CS, SP				

Replacement Parts Diagram Model 990 (Series A-E)

PROPRIETARY RIGHTS NOTICE This document and all information contained within it is the property of Hamilton Beach Brands, Inc. (HBB). It is confidential and proprietary and has been provided to you for a limited purpose. It must be returned or destroyed upon request. Disclosure, reproduction or use of this document and any information contained within it, in full or in part, for any purpose is forbidden without the prior written consent of HBB. No photographs may be taken of any article fabricated or assembled from this document without the prior written consent of HBB.

HOUSING ASSEMBLY



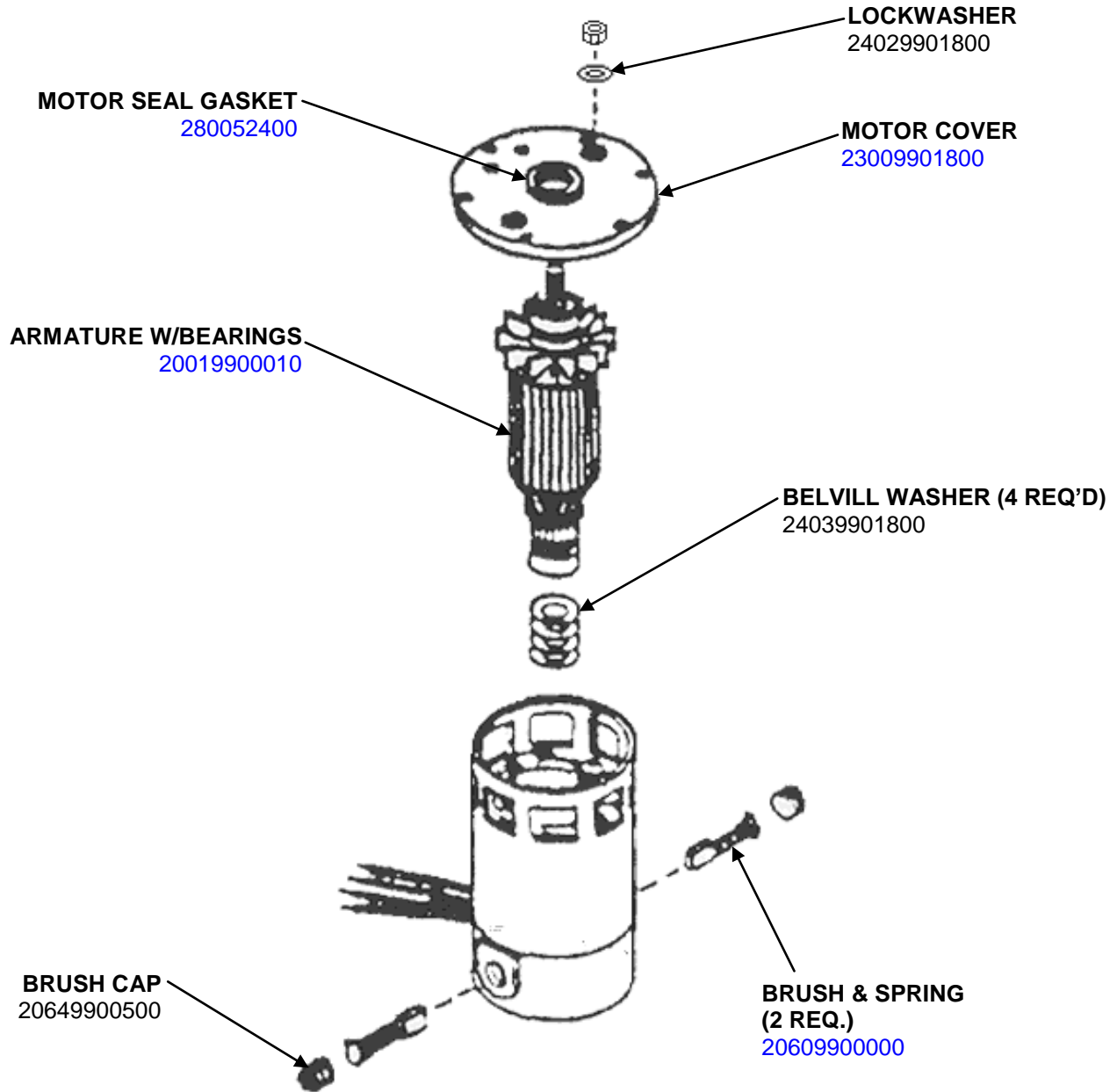
 Hamilton Beach 4421 Waterfront Drive Glen Allen, VA 23060	Revision Description: Correct inconsistencies		Revision Date: 2/17/14		Approved by: DOC4465	
	Request Number:		Page: 3 of 4		Document #: 510001900	
	Issue Code(s): CS, SP		Rev: D			


Replacement Parts Diagram

Model 990 (Series A-E)

PROPRIETARY RIGHTS NOTICE This document and all information contained within it is the property of Hamilton Beach Brands, Inc. (HBB). It is confidential and proprietary and has been provided to you for a limited purpose. It must be returned or destroyed upon request. Disclosure, reproduction or use of this document and any information contained within it, in full or in part, for any purpose is forbidden without the prior written consent of HBB. No photographs may be taken of any article fabricated or assembled from this document without the prior written consent of HBB.

MOTOR ASSEMBLY



 <p>Hamilton Beach 4421 Waterfront Drive Glen Allen, VA 23060</p>	Revision Description: Correct inconsistencies		Revision Date: 2/17/14		Approved by: DOC4465	
	Request Number:		Page: 4 of 4	Document #:	510001900	Rev: D
	Issue Code(s):	CS, SP				