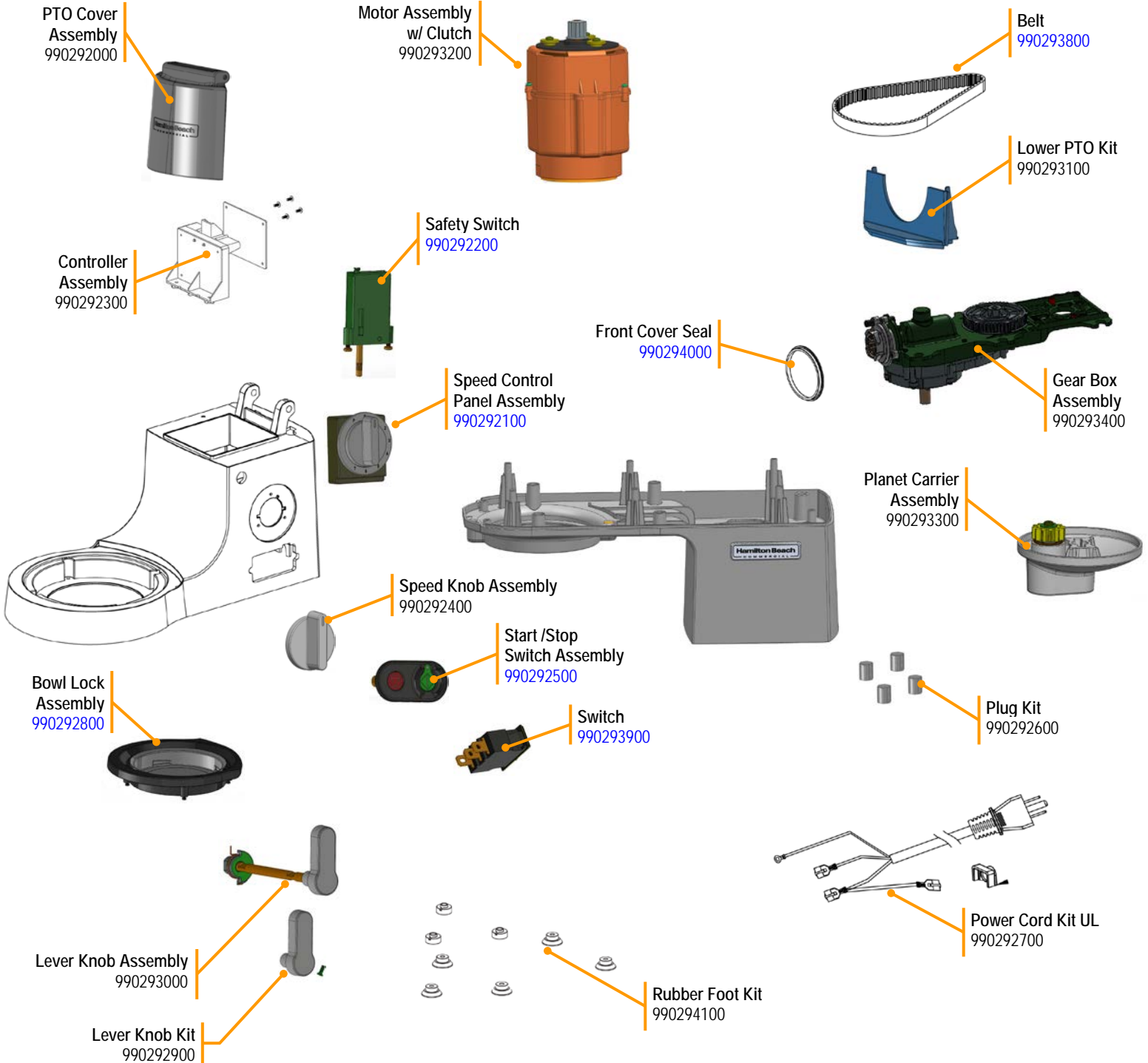


Parts and Accessories Diagram

Model CPM800

PROPRIETARY RIGHTS NOTICE This document and all information contained within it is the property of Hamilton Beach Brands, Inc. (HBB). It is confidential and proprietary and has been provided to you for a limited purpose. It must be returned or destroyed upon request. Disclosure, reproduction or use of this document and any information contained within it, in full or in part, for any purpose is forbidden without the prior written consent of HBB. No photographs may be taken of any article fabricated or assembled from this document without the prior written consent of HBB.

Replacement Parts

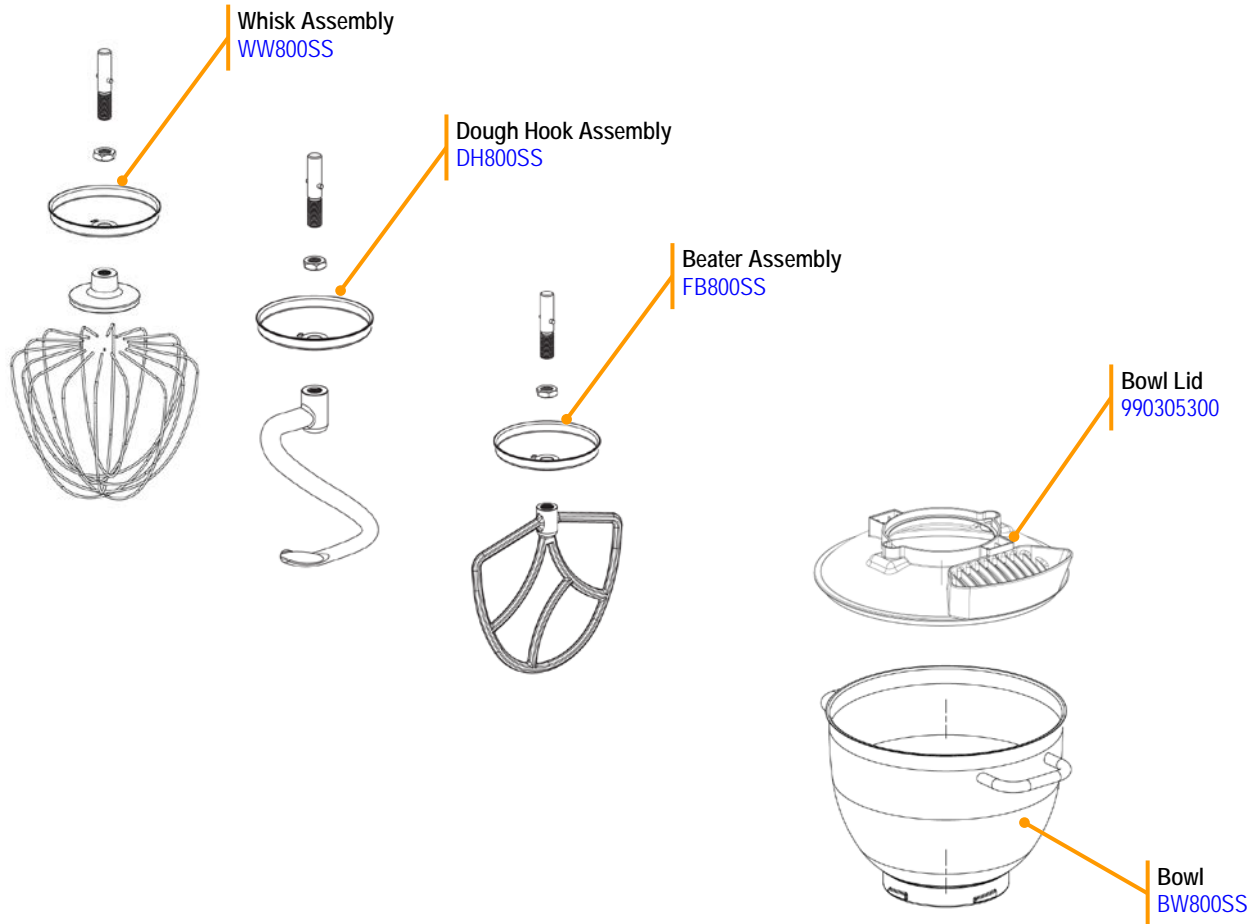



 Hamilton Beach 4421 Waterfront Drive Glen Allen, VA 23060	Revision Description:	Update Motor Assembly and Middle Housing Images						
	Request Number:	DOC9147	Revision Date:	6/29/2018	Approved by:	DOC9147		
	Issue Code(s):		Page:	1 of 2	Document #:	540096900	Rev:	C

Parts and Accessories Diagram

Model CPM800

PROPRIETARY RIGHTS NOTICE This document and all information contained within it is the property of Hamilton Beach Brands, Inc. (HBB). It is confidential and proprietary and has been provided to you for a limited purpose. It must be returned or destroyed upon request. Disclosure, reproduction or use of this document and any information contained within it, in full or in part, for any purpose is forbidden without the prior written consent of HBB. No photographs may be taken of any article fabricated or assembled from this document without the prior written consent of HBB.



 4421 Waterfront Drive Glen Allen, VA 23060	Revision Description:	Update Motor Assembly and Middle Housing Images						
	Request Number:	DOC9147	Revision Date:	6/29/2018	Approved by:	DOC9147		
	Issue Code(s):		Page:	2 of 2	Document #:	540096900	Rev:	C