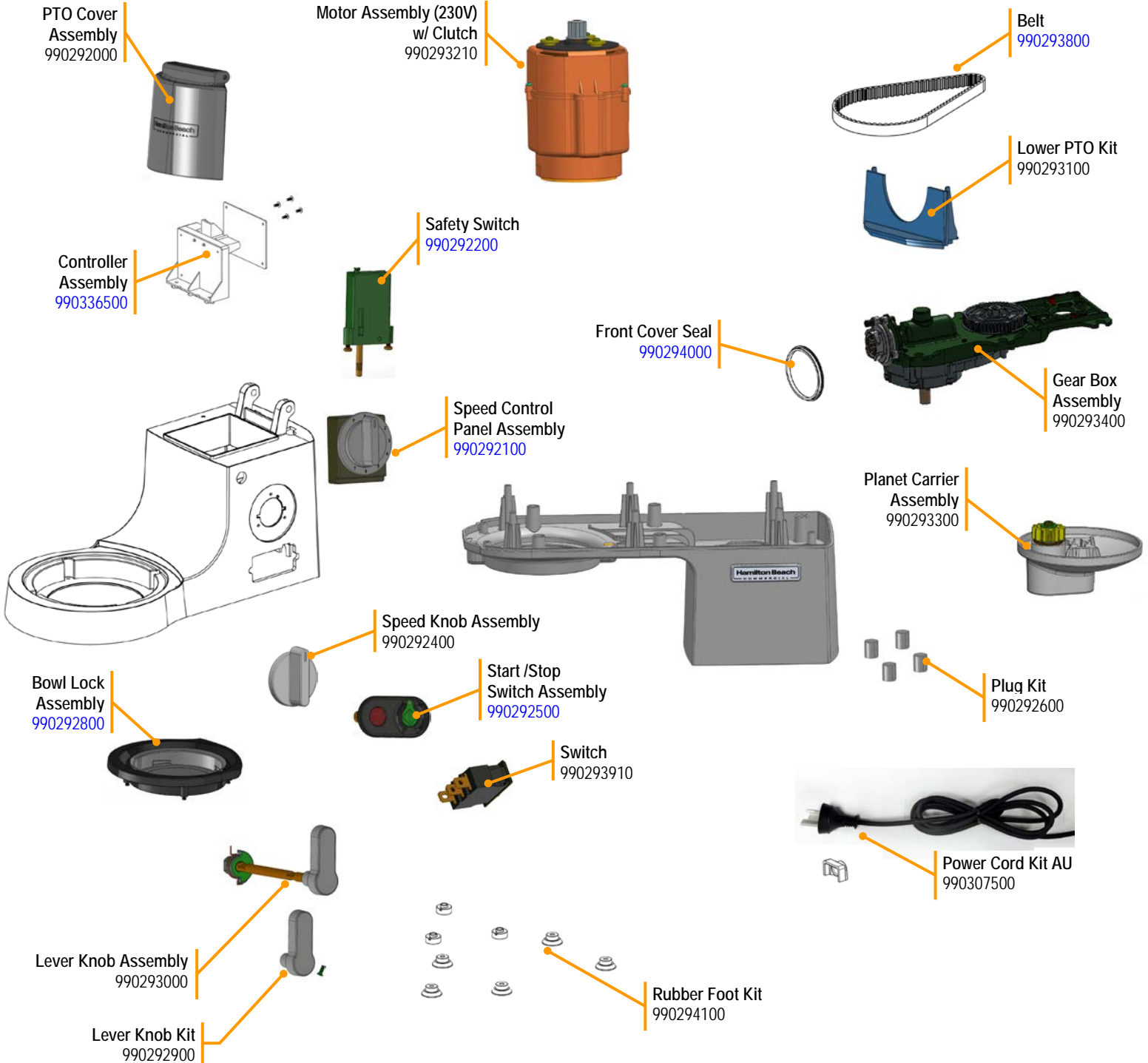


Parts and Accessories Diagram

Model CPM800-AU (230V)

PROPRIETARY RIGHTS NOTICE This document and all information contained within it is the property of Hamilton Beach Brands, Inc. (HBB). It is confidential and proprietary and has been provided to you for a limited purpose. It must be returned or destroyed upon request. Disclosure, reproduction or use of this document and any information contained within it, in full or in part, for any purpose is forbidden without the prior written consent of HBB. No photographs may be taken of any article fabricated or assembled from this document without the prior written consent of HBB.

Replacement Parts

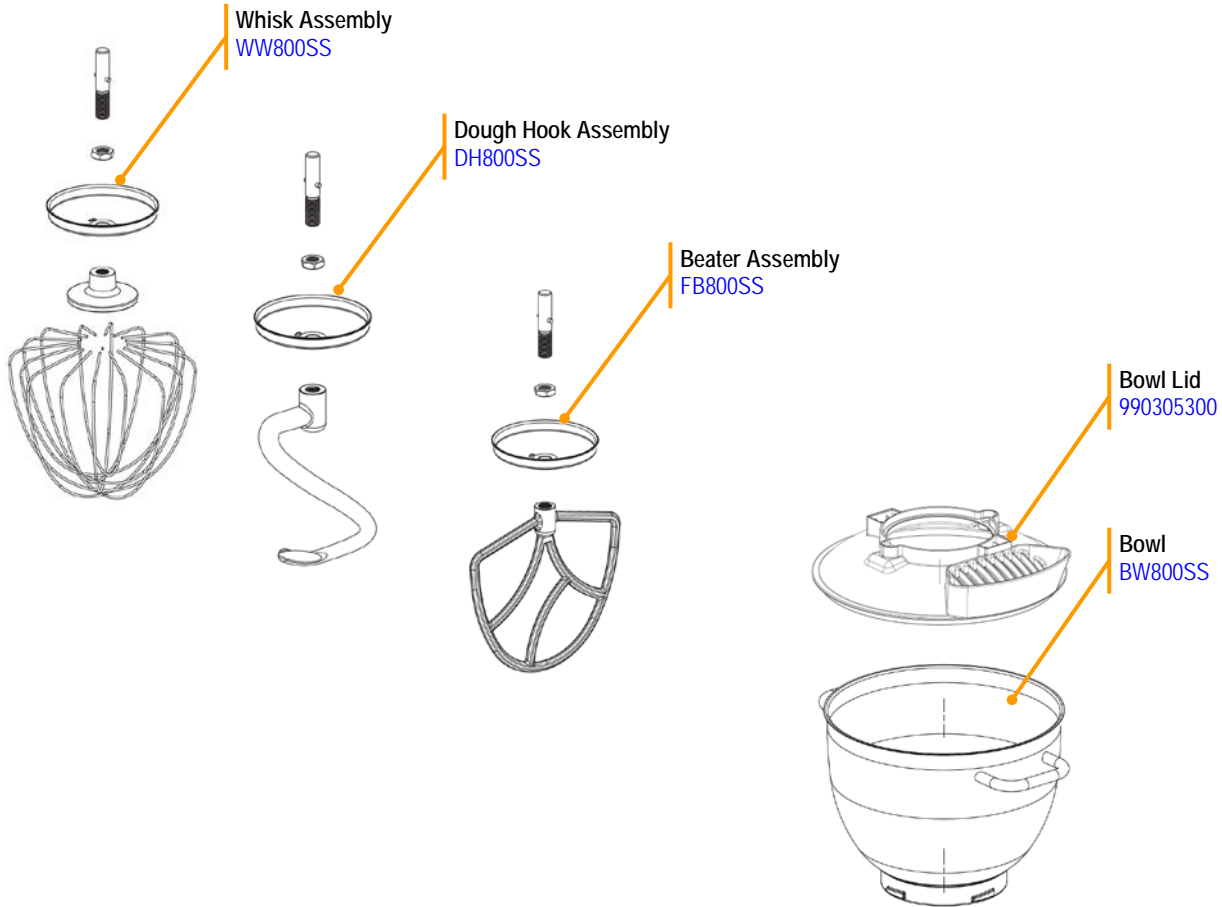



Hamilton Beach 4421 Waterfront Drive Glen Allen, VA 23060	Revision Description:	Update Cordset p/n, correct model in header of PAD					
	Request Number:	DOC10412	Revision Date:	10/23/2019	Approved by:	DOC10412	
	Issue Code(s):		Page:	1 of 2	Document #:	540097400	Rev:

Parts and Accessories Diagram

Model CPM800-AU (230V)

PROPRIETARY RIGHTS NOTICE This document and all information contained within it is the property of Hamilton Beach Brands, Inc. (HBB). It is confidential and proprietary and has been provided to you for a limited purpose. It must be returned or destroyed upon request. Disclosure, reproduction or use of this document and any information contained within it, in full or in part, for any purpose is forbidden without the prior written consent of HBB. No photographs may be taken of any article fabricated or assembled from this document without the prior written consent of HBB.



 <p>Hamilton Beach 4421 Waterfront Drive Glen Allen, VA 23060</p>	Revision Description:	Update Cordset p/n, correct model in header of PAD					
	Request Number:	DOC10412	Revision Date:	10/23/2019	Approved by:	DOC10412	
	Issue Code(s):		Page:	2 of 2	Document #:	540097400	Rev: