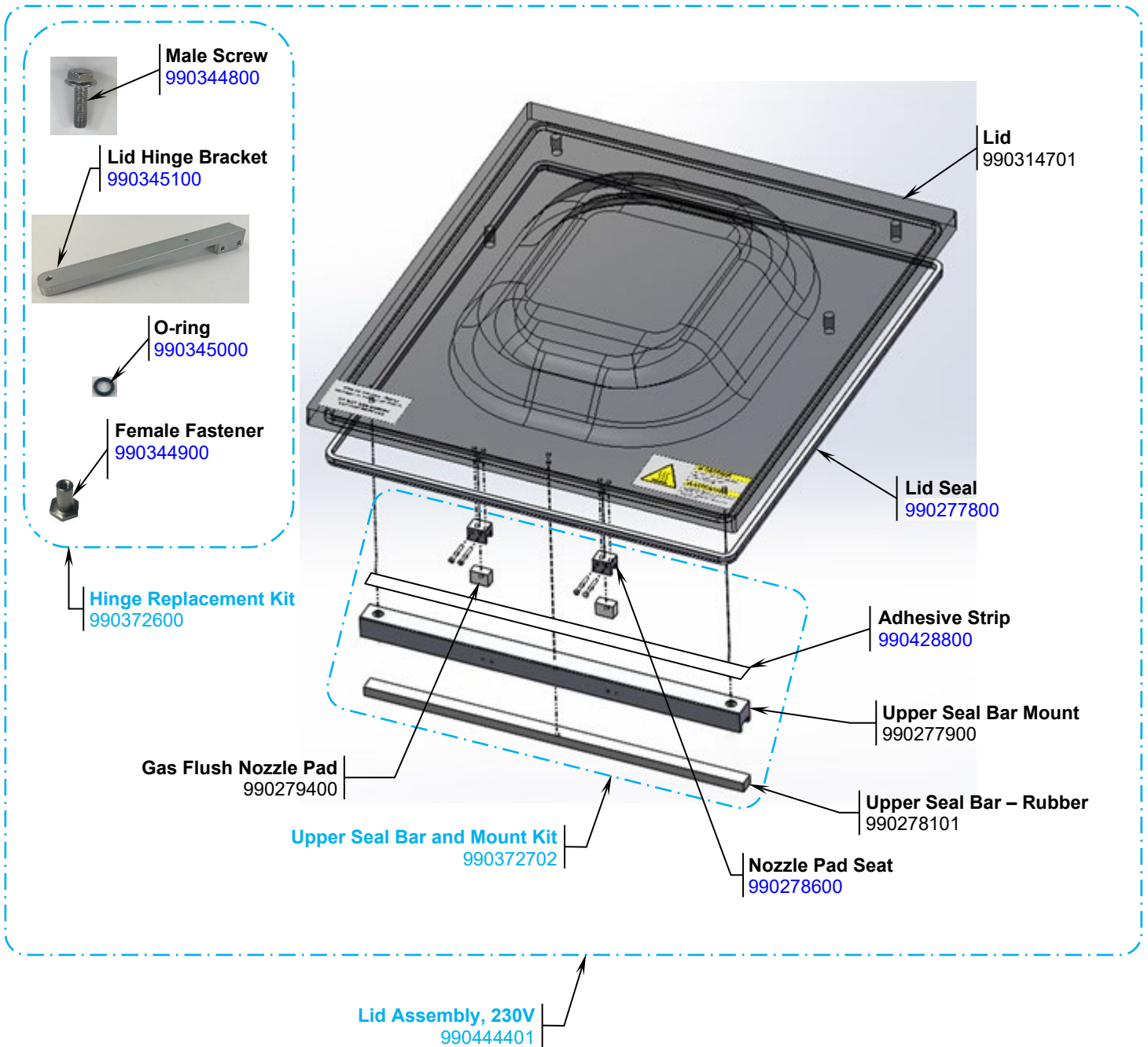


Parts and Accessories Diagram

PROPRIETARY RIGHTS NOTICE This document and all information contained within it is the property of Hamilton Beach Brands, Inc. (HBB). It is confidential and proprietary and has been provided to you for a limited purpose. It must be returned or destroyed upon request. Disclosure, reproduction or use of this document and any information contained within it, in full or in part, for any purpose is forbidden without the prior written consent of HBB. No photographs may be taken of any article fabricated or assembled from this document without the prior written consent of HBB.



Parts not Shown:

Stainless Relay Clamps - 990393300

Tee Fitting - 990263600

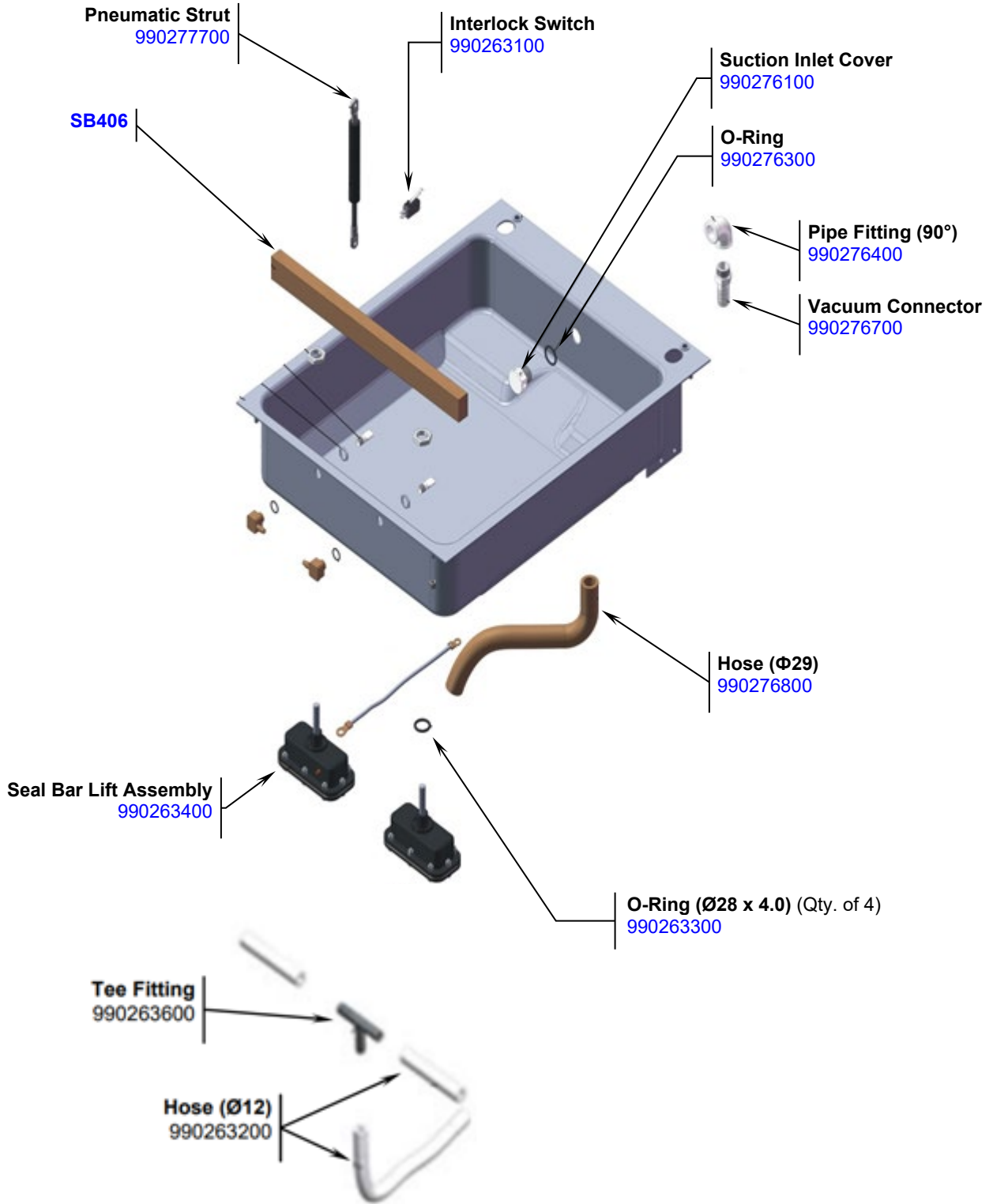
Hose - 990279600


Gas Flush Nozzle Kit - 990282400

 Hamilton Beach 4421 Waterfront Drive Glen Allen, VA 23060	Revision Description:	Added Lid Assembly, 230V				
	Request Number:	DOC15529	Revision Date:	19-Mar-2026	Approved by:	DOC15529
	Issue Code(s):		Page:	1 of 4	Document #:	540099201
				Document #:	540099201	Rev: P

Parts and Accessories Diagram

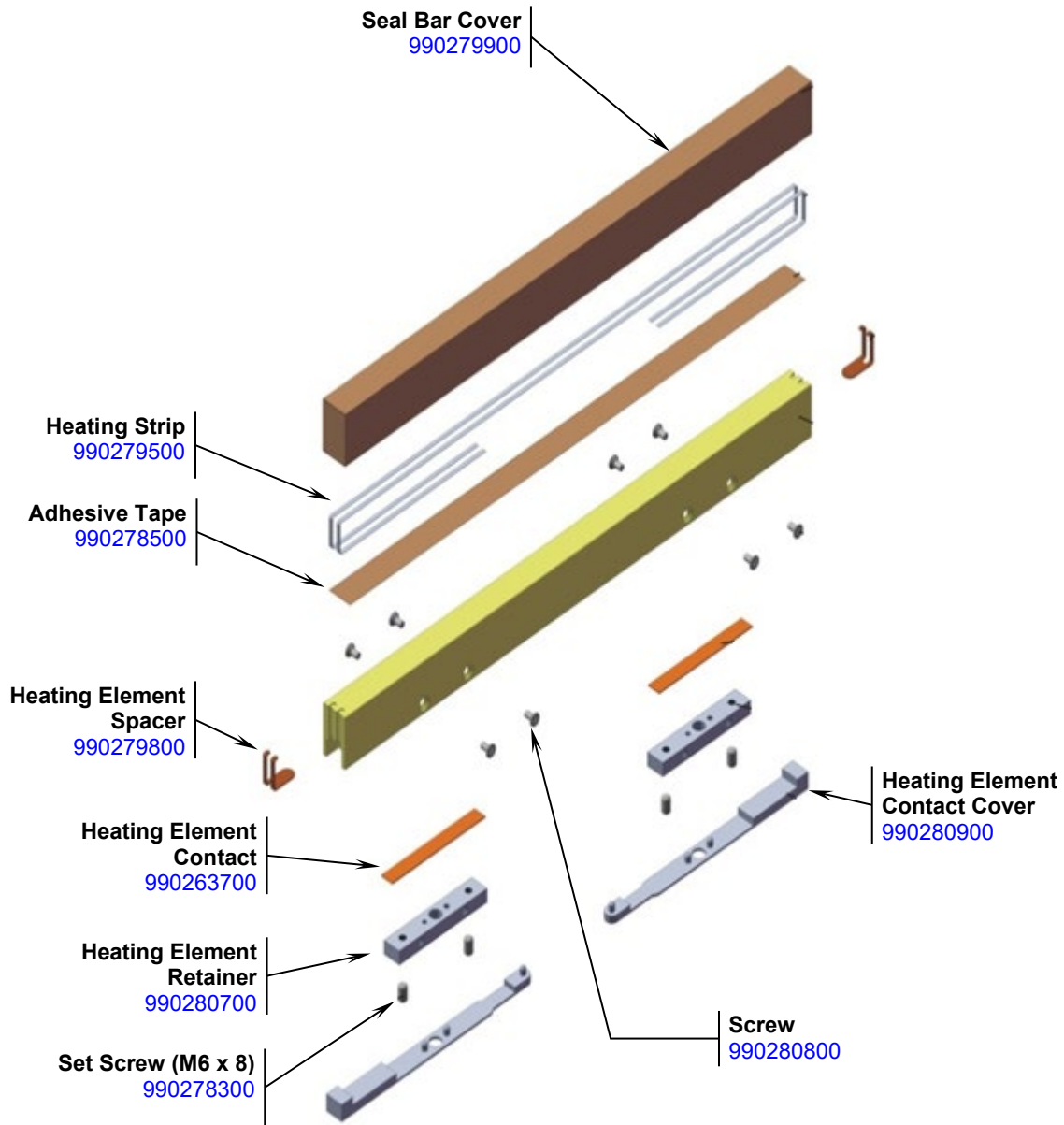
PROPRIETARY RIGHTS NOTICE This document and all information contained within it is the property of Hamilton Beach Brands, Inc. (HBB). It is confidential and proprietary and has been provided to you for a limited purpose. It must be returned or destroyed upon request. Disclosure, reproduction or use of this document and any information contained within it, in full or in part, for any purpose is forbidden without the prior written consent of HBB. No photographs may be taken of any article fabricated or assembled from this document without the prior written consent of HBB.




 <p>Hamilton Beach 4421 Waterfront Drive Glen Allen, VA 23060</p>	Revision Description: Added Lid Assembly, 230V					
	Request Number: DOC15529	Revision Date: 19-Mar-2026	Approved by: DOC15529			
	Issue Code(s):	Page: 2 of 4	Document #: 540099201	Rev: P		

Parts and Accessories Diagram

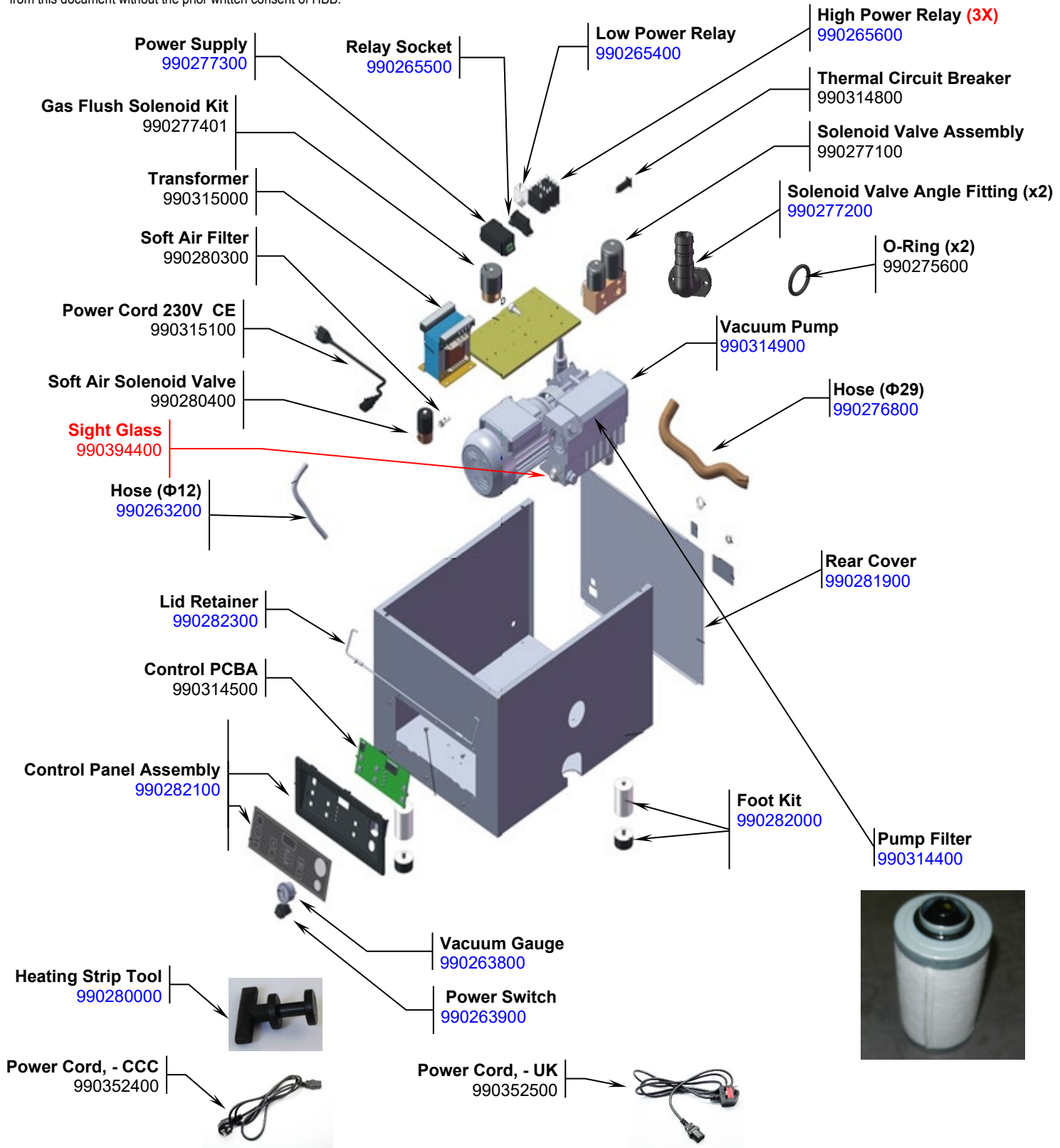
PROPRIETARY RIGHTS NOTICE This document and all information contained within it is the property of Hamilton Beach Brands, Inc. (HBB). It is confidential and proprietary and has been provided to you for a limited purpose. It must be returned or destroyed upon request. Disclosure, reproduction or use of this document and any information contained within it, in full or in part, for any purpose is forbidden without the prior written consent of HBB. No photographs may be taken of any article fabricated or assembled from this document without the prior written consent of HBB.



 <p>Hamilton Beach 4421 Waterfront Drive Glen Allen, VA 23060</p>	Revision Description:	Added Lid Assembly, 230V				
	Request Number:	DOC15529	Revision Date:	19-Mar-2026	Approved by:	DOC15529
	Issue Code(s):		Page:	3 of 4	Document #:	540099201
					Rev:	P

Parts and Accessories Diagram

PROPRIETARY RIGHTS NOTICE This document and all information contained within it is the property of Hamilton Beach Brands, Inc. (HBB). It is confidential and proprietary and has been provided to you for a limited purpose. It must be returned or destroyed upon request. Disclosure, reproduction or use of this document and any information contained within it, in full or in part, for any purpose is forbidden without the prior written consent of HBB. No photographs may be taken of any article fabricated or assembled from this document without the prior written consent of HBB.



 Hamilton Beach 4421 Waterfront Drive Glen Allen, VA 23060	Revision Description: Added Lid Assembly, 230V					
	Request Number: DOC15529	Revision Date: 19-Mar-2026	Approved by: DOC15529			
	Issue Code(s):	Page: 4 of 4	Document #: 540099201	Rev: P		