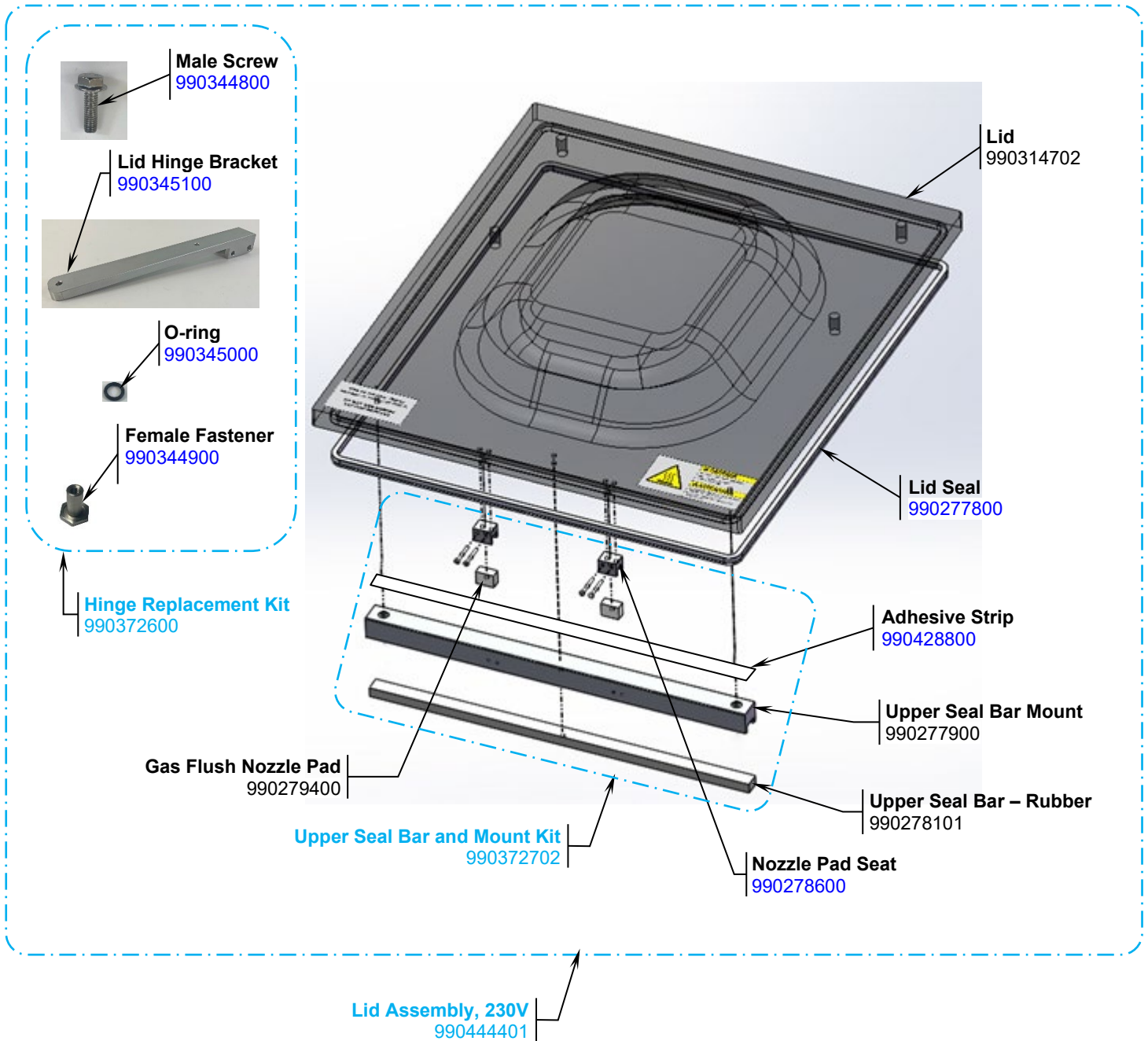


Parts and Accessories Diagram

PROPRIETARY RIGHTS NOTICE: This document and all information contained within it is the property of Hamilton Beach Brands, Inc. (HBB). It is confidential and proprietary and has been provided to you for a limited purpose. It must be returned or destroyed upon request. Disclosure, reproduction or use of this document and any information contained within it, in full or in part, for any purpose is forbidden without the prior written consent of HBB. No photographs may be taken of any article fabricated or assembled from this document without the prior written consent of HBB.



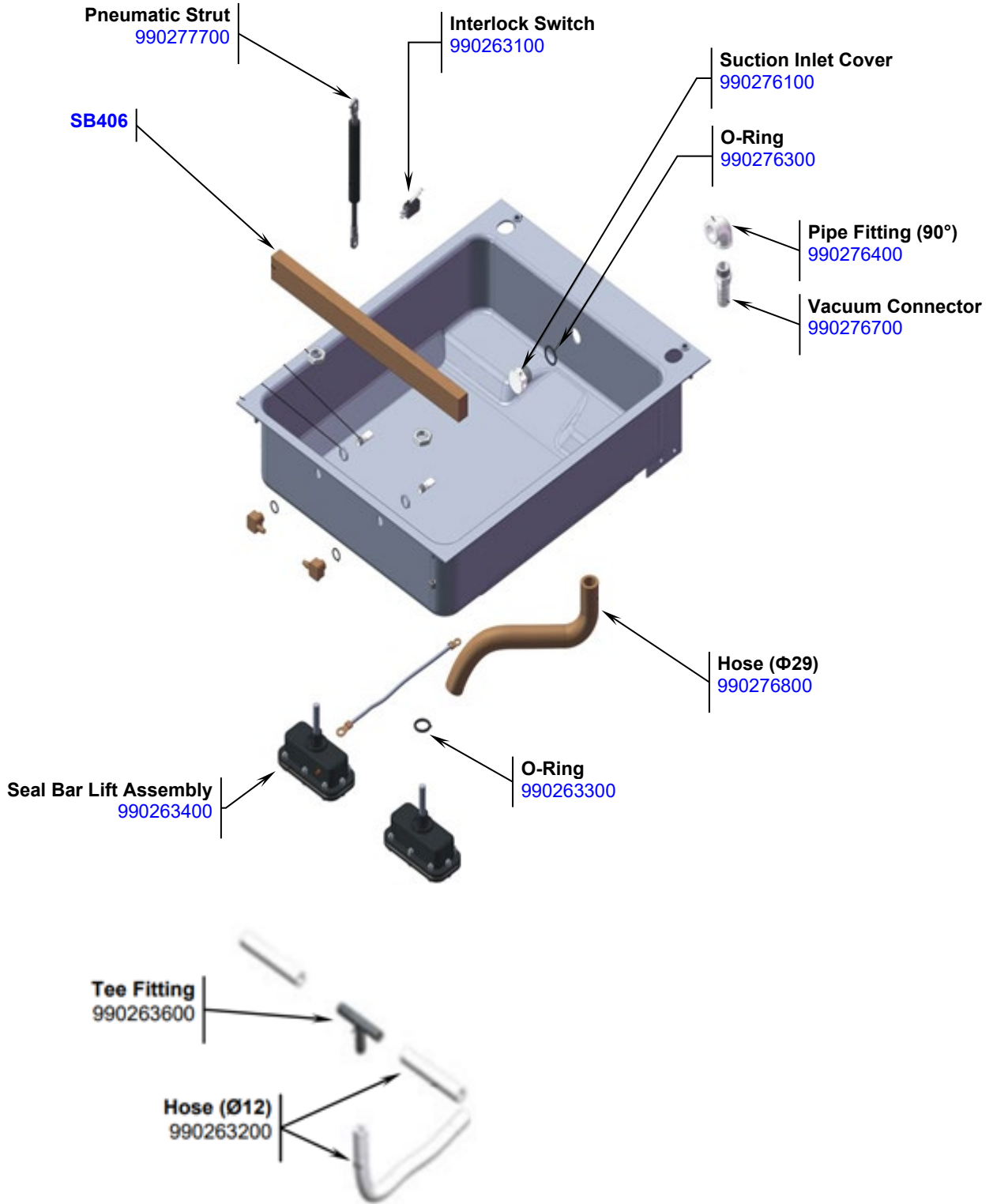
Parts not Shown:


- Hose – 990279600
- Gas Flush Nozzle Kit – 990282400
- Stainless Relay Clamps – 990393300
- Tee Fitting - 990263600

<p>Hamilton Beach 4421 Waterfront Drive Glen Allen, VA 23060</p>	Revision Description:	Added Lid Assembly, 230V				
	Request Number:	DOC15529	Revision Date:	19-Mar-2026	Approved by:	DOC15529
	Issue Code(s):		Page:	1 of 4	Document #:	540099202
					Rev:	C

Parts and Accessories Diagram

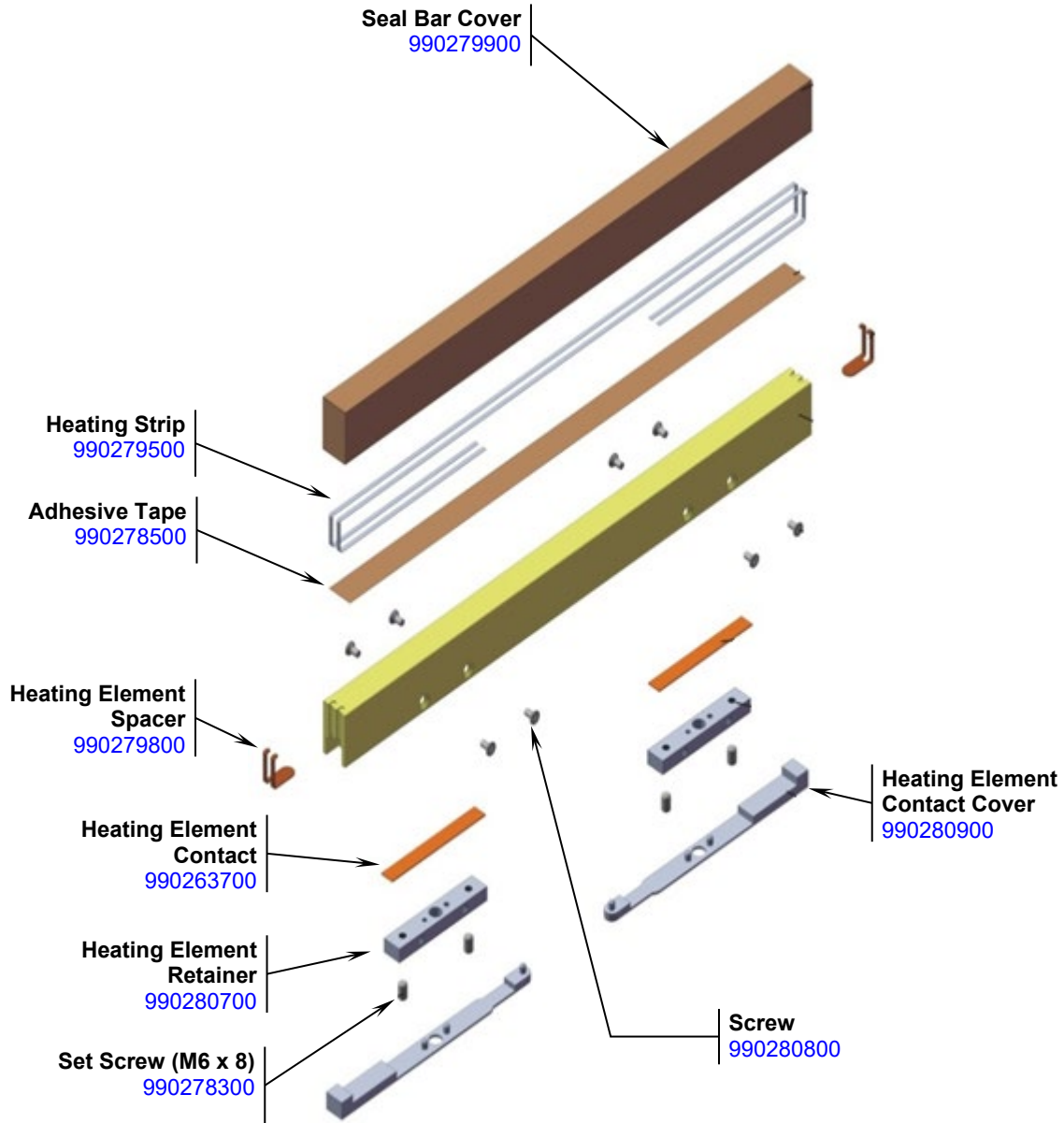
PROPRIETARY RIGHTS NOTICE: This document and all information contained within it is the property of Hamilton Beach Brands, Inc. (HBB). It is confidential and proprietary and has been provided to you for a limited purpose. It must be returned or destroyed upon request. Disclosure, reproduction or use of this document and any information contained within it, in full or in part, for any purpose is forbidden without the prior written consent of HBB. No photographs may be taken of any article fabricated or assembled from this document without the prior written consent of HBB.




 <p>Hamilton Beach 4421 Waterfront Drive Glen Allen, VA 23060</p>	Revision Description:		Added Lid Assembly, 230V			
	Request Number:	DOC15529	Revision Date:	19-Mar-2026	Approved by:	DOC15529
	Issue Code(s):		Page:	2 of 4	Document #:	540099202
				Rev:	C	

Parts and Accessories Diagram

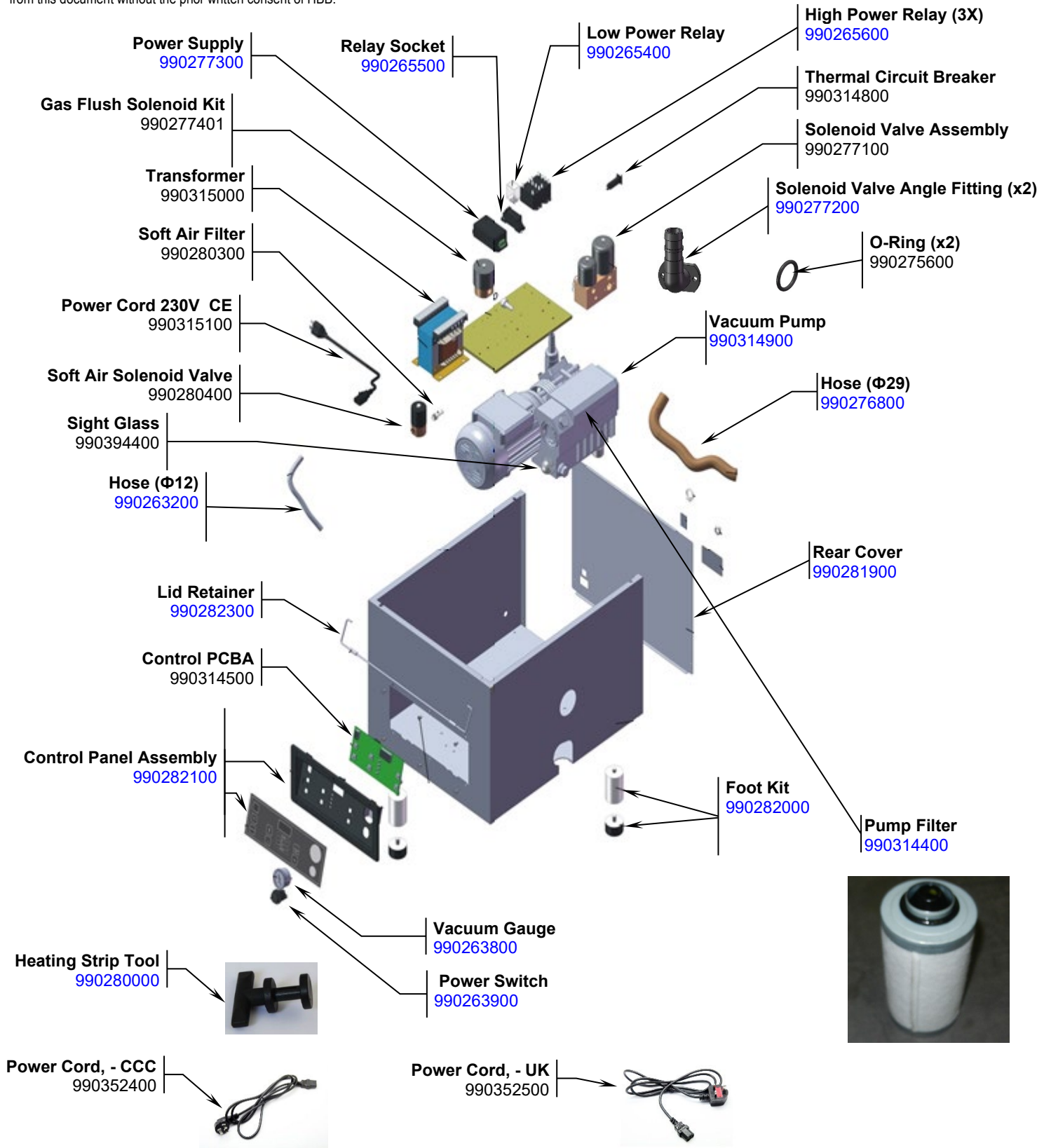
PROPRIETARY RIGHTS NOTICE: This document and all information contained within it is the property of Hamilton Beach Brands, Inc. (HBB). It is confidential and proprietary and has been provided to you for a limited purpose. It must be returned or destroyed upon request. Disclosure, reproduction or use of this document and any information contained within it, in full or in part, for any purpose is forbidden without the prior written consent of HBB. No photographs may be taken of any article fabricated or assembled from this document without the prior written consent of HBB.



 <p>Hamilton Beach 4421 Waterfront Drive Glen Allen, VA 23060</p>	Revision Description:	Added Lid Assembly, 230V				
	Request Number:	DOC15529	Revision Date:	19-Mar-2026	Approved by:	DOC15529
	Issue Code(s):		Page:	3 of 4	Document #:	540099202
					Rev:	C

Parts and Accessories Diagram

PROPRIETARY RIGHTS NOTICE: This document and all information contained within it is the property of Hamilton Beach Brands, Inc. (HBB). It is confidential and proprietary and has been provided to you for a limited purpose. It must be returned or destroyed upon request. Disclosure, reproduction or use of this document and any information contained within it, in full or in part, for any purpose is forbidden without the prior written consent of HBB. No photographs may be taken of any article fabricated or assembled from this document without the prior written consent of HBB.



 Hamilton Beach 4421 Waterfront Drive Glen Allen, VA 23060	Revision Description:	Added Lid Assembly, 230V				
	Request Number:	DOC15529	Revision Date:	19-Mar-2026	Approved by:	DOC15529
	Issue Code(s):		Page:	4 of 4	Document #:	540099202
					Rev:	C