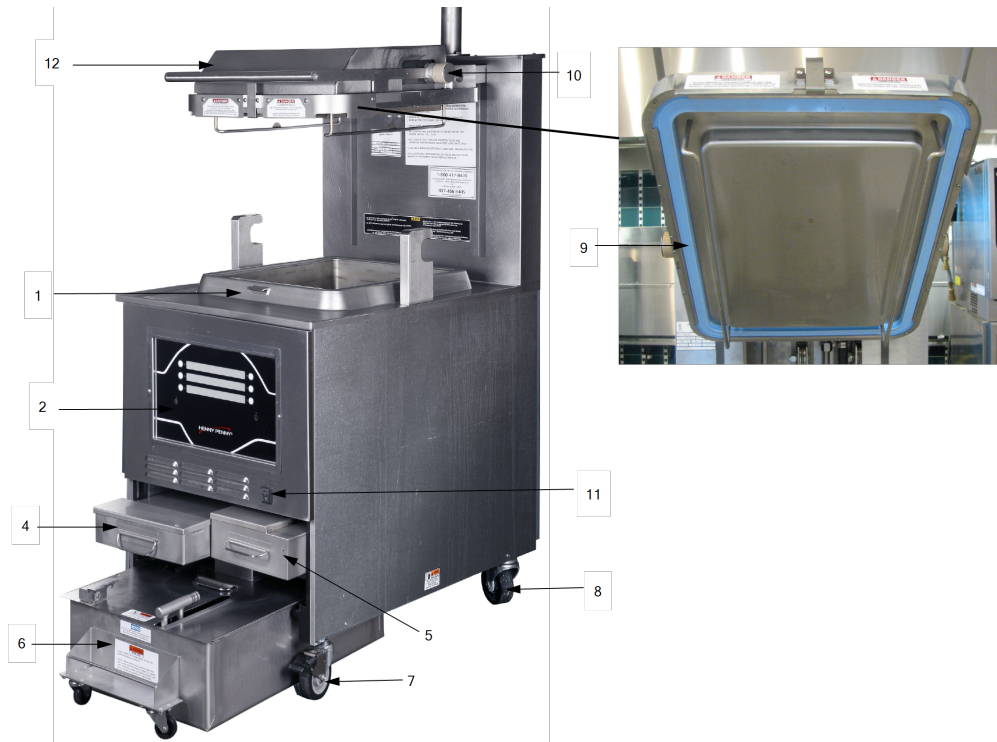




For the most up-to-date parts information, visit  
<https://parts.hennypennyhelp.com>.

## Major Components



Item No.	Part No.	Description	Qty.	Stocking Level
1	<a href="#">92484</a>	Lid latch bracket	1	
2	<a href="#">96804</a>	Control assembly, General Market	1	B
2*	<a href="#">96613</a>	- Control decal, General Market	1	
3*	<a href="#">175227</a>	- Speaker service pack	1	A
4	<a href="#">150598</a>	Fresh oil tank	1	
5	<a href="#">150836</a>	Condensation pan (Units before 9/16)	1	
5	<a href="#">163939</a>	Condensation pan (Units after 9/16)	1	
6	<a href="#">151783</a>	<a href="#">Filter pan assembly</a>	1	



For the most up-to-date parts information, visit  
<https://parts.hennypennyhelp.com>.

Item No.	Part No.	Description	Qty.	Stocking Level
7	<a href="#">90227</a>	3.5 in. rigid caster with brake	2	C
8	<a href="#">35154</a>	4 in. swivel stem caster	2	C
9	<a href="#">170725</a>	Lid gasket	1	A
10	<a href="#">140440</a>	Linkage shaft roller kit (qty 2 rollers)	1	
11	<a href="#">52224</a>	Covered power switch	1	A
12	--	<a href="#">Lid and cover assembly</a>	1	C
13*	<a href="#">03737</a>	Carrier kit, 2-1/4 in rack spacing, General Market	1	
13*	<a href="#">03771</a>	Carrier kit, spacing 2.50 in, General Market	1	
13*	<a href="#">03772</a>	Carrier kit, spacing 1.60 in, General Market	1	
14*	140597	Front dispose retrofit kit (build date prior to 2016 with bulk oil)	1	
15*	<a href="#">140764</a>	Bulk dispose retrofit kit (convert a non-bulk oil to bulk system) Note: Kit does not include oil discard hose. If oil discard hose is needed, use kit <a href="#">140682</a> in addition.	1	
16*	<a href="#">140682</a>	Hose kit, rear bulk dispose	1	
17*	<a href="#">140596</a>	Selector valve to ATO flex tube kit (build date prior to 2016)	1	
18*	<a href="#">36404</a>	Wire basket	A/R	
19*	<a href="#">14694</a>	Box of wire baskets (quantity 15)	A/R	
20*	<a href="#">36374</a>	Basket handle	A/R	



For the most up-to-date parts information, visit  
<https://parts.hennypennyhelp.com>.

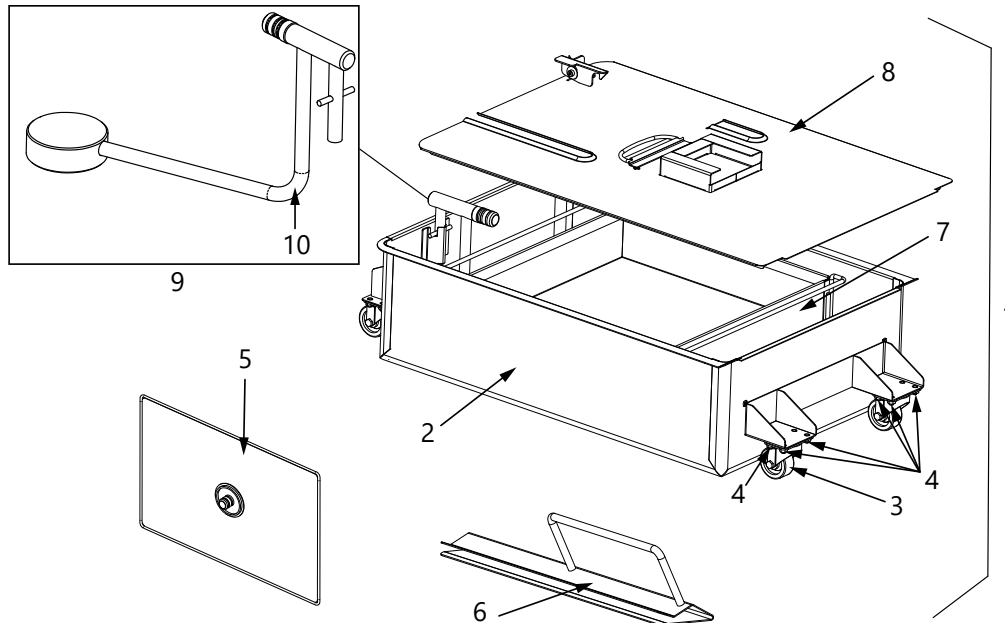
Item No.	Part No.	Description	Qty.	Stocking Level
21*	<a href="#">44782</a>	Wire rack	A/R	
22*	<a href="#">14303</a>	Box of 1/2 size wire racks (quantity 15)	A/R	
23*	<a href="#">35308</a>	Rack handle	A/R	
24*	<a href="#">152487</a>	USB port and cable	1	
25*	<a href="#">152488</a>	USB cap	1	
29*	<a href="#">03156</a>	Tether kit	A/R	
30*	<a href="#">03003</a>	Front dispose wand	1	
31*	<a href="#">156350</a>	Junction box	1	
32*	<a href="#">90368</a>	Terminal block rail	1	
33*	<a href="#">40764</a>	Terminal block 16mm	A/R	
34*	<a href="#">55144</a>	Terminal block, ground, 16mm	1	
35*	<a href="#">40761</a>	Terminal block end stop	2	
36*	<a href="#">41595</a>	Terminal block card label	A/R	
37*	<a href="#">65180</a>	Power cord assembly	A/R	C
	12199	Oil test kit	A/R	

**Recommended Parts: A = Truck Stock; B = Dist. Stock**  
**\* = Not Shown**  
**A/R = As Required**



For the most up-to-date parts information, visit  
<https://parts.hennypennyhelp.com>.

## Filter Pan Assembly



Item No.	Part No.	Description	Qty.	Stocking Level
1	<a href="#">151783</a>	Filter pan assembly with lid	1	
2	<a href="#">156492</a>	- Filter pan bottom assembly without lid	1	
3	<a href="#">19004</a>	- 2 in. swivel caster	4	C
4	<a href="#">NS04-005</a>	- Serrated flange locknut, 1/4-20	16	
5	<a href="#">183689</a>	- Filter screen service pack (o-rings included)	1	
6	<a href="#">150739</a>	- Filter screen clip	2	
7	<a href="#">165364</a>	- Crumb catcher	1	
7*	<a href="#">181835</a>	Fine screen crumb catcher (optional)	A/R	



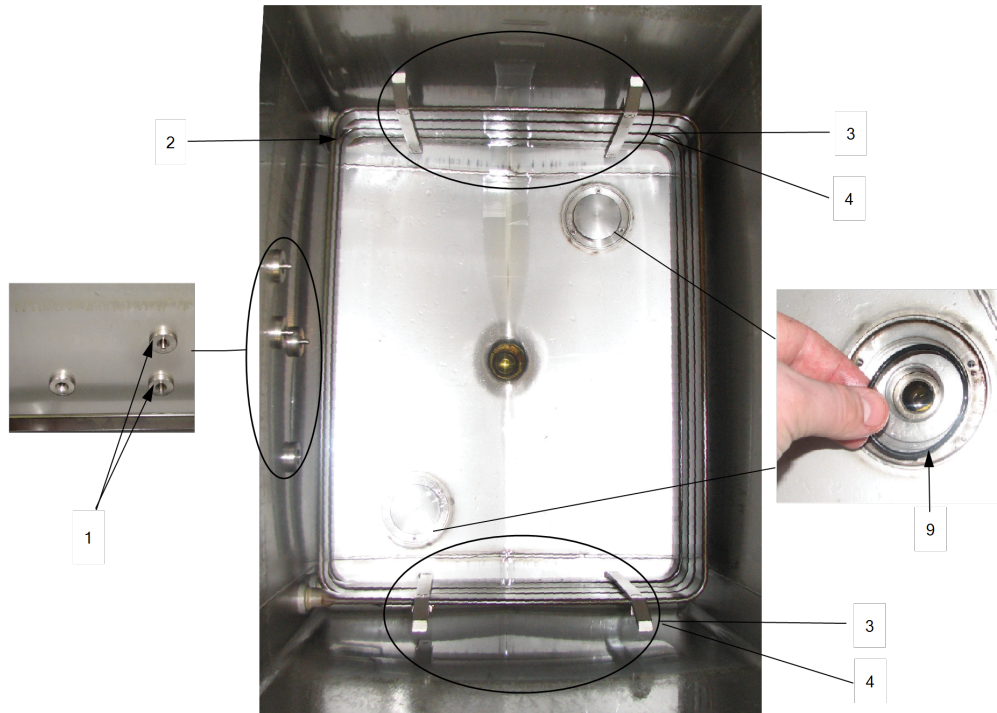
For the most up-to-date parts information, visit  
<https://parts.hennypennyhelp.com>.

Item No.	Part No.	Description	Qty.	Stocking Level
8	<a href="#">94289</a>	- Filter pan lid	1	
9	<a href="#">152204</a>	- Oil filter pickup tube	1	
10*	<a href="#">175860</a>	- Oil filter pickup tube O-ring, qty 12	1	A
11*	<a href="#">12102</a>	Filter envelopes, qty 100	A/R	B
11*	12086	Filter envelopes, 13.75 X 19.75 inch, qty 60	A/R	
<b>Recommended Parts: A = Truck Stock; B = Dist. Stock</b> * = Not Shown A/R = As Required				



For the most up-to-date parts information, visit  
<https://parts.hennypennyhelp.com>.

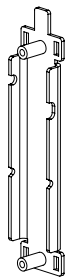
## Heating Element Assembly



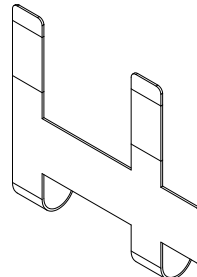
3



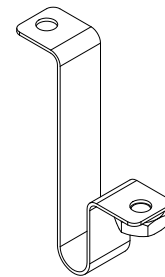
4



5



6



Item No.	Part No.	Description	Qty.	Stocking Level
1	<a href="#">154252</a>	RTD probe assembly, 2 in	1	A
1*	<a href="#">140593</a>	Probe guard kit	1	A



For the most up-to-date parts information, visit  
<https://parts.hennypennyhelp.com>.

Item No.	Part No.	Description	Qty.	Stocking Level
2	<a href="#">161612-001</a>	Heating element service pack, 208 VAC 8.5 kW	2	B
2	<a href="#">161612-003</a>	Heating element service pack, 240 VAC 8.5 kW	2	B
2	<a href="#">161612-004</a>	Heating element service pack, 480 VAC 8.5 kW	2	B
2	<a href="#">161612-005</a>	Heating element service pack, 200 VAC 8.5 kW	2	B
2	<a href="#">161612-006</a>	Heating element service pack, 230 VAC 8.5 kW	2	B
2	<a href="#">161612-007</a>	Heating element service pack, 220 VAC 8.5 kW	2	B
2*	<a href="#">-16855</a>	Heating element o-ring seal	2/element	
3*	<a href="#">174482</a>	Element bracket service pack (new design, not compatible with older brackets)	1	
3	<a href="#">164497</a>	- High limit front bracket	2	
4	<a href="#">164500</a>	- Hi limit back bracket	2	
4*	<a href="#">SC04-026</a>	- Screw, 10-32 x 3/8 in	4	
5	<a href="#">154736</a>	High limit clip	2	
6	<a href="#">154866</a>	Hi limit clamp clip assembly	2	
7*	<a href="#">SC01-310</a>	High limit clamp screw	2	
8*	<a href="#">SC01-173</a>	Stainless crosstip screw, 10-32 x 5/8 in	8	



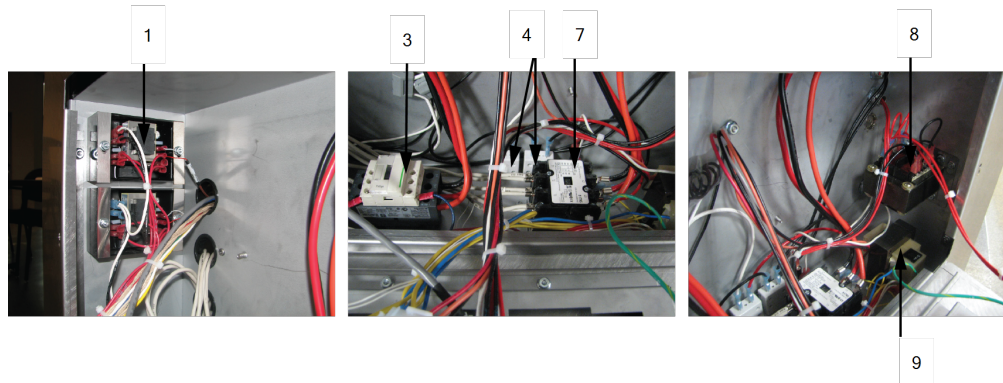
For the most up-to-date parts information, visit  
<https://parts.hennypennyhelp.com>.

Item No.	Part No.	Description	Qty.	Stocking Level
9	<a href="#">90085</a>	Crump sweep O-ring	2	
10*	<a href="#">94016</a>	Crumb sweep fitting	2	
11*	<a href="#">SC01-152</a>	- Crumb sweep screw	4	
<b>Recommended Parts: A = Truck Stock; B = Dist. Stock</b> <b>* = Not Shown</b>				



For the most up-to-date parts information, visit  
<https://parts.hennypennyhelp.com>.

## High Limit, Heat Contactor, and Control Transformer



Item No.	Part No.	Description	Qty.	Stocking Level
1	<a href="#">175915-002</a>	Service Pack- Single High-limit control, 230 VAC, 575 °F - Gen 1, Yellow Sticker, UL (Before 12/2020)	2	A
1	<a href="#">175915-006</a>	Service Pack - Dual High-limit control, 100-240 VAC, 575 °F - Gen 1, Green Sticker, CE (all units), UL (After 12/2020) - Gen 2, Black Circle (After 1/31/2023) Note: Dates are production implementation dates. Gen 2 is newest design. - Gen 2 can replace a Gen 1 - Gen 1 cannot replace a Gen 2	2	A
2*	<a href="#">84987</a>	High-limit reset switch, N/O, UL (Before 12/2020)	1	A
2*	<a href="#">157360</a>	High-limit reset switch, N/C, CE (all units), UL (After 12/2020)	1	A



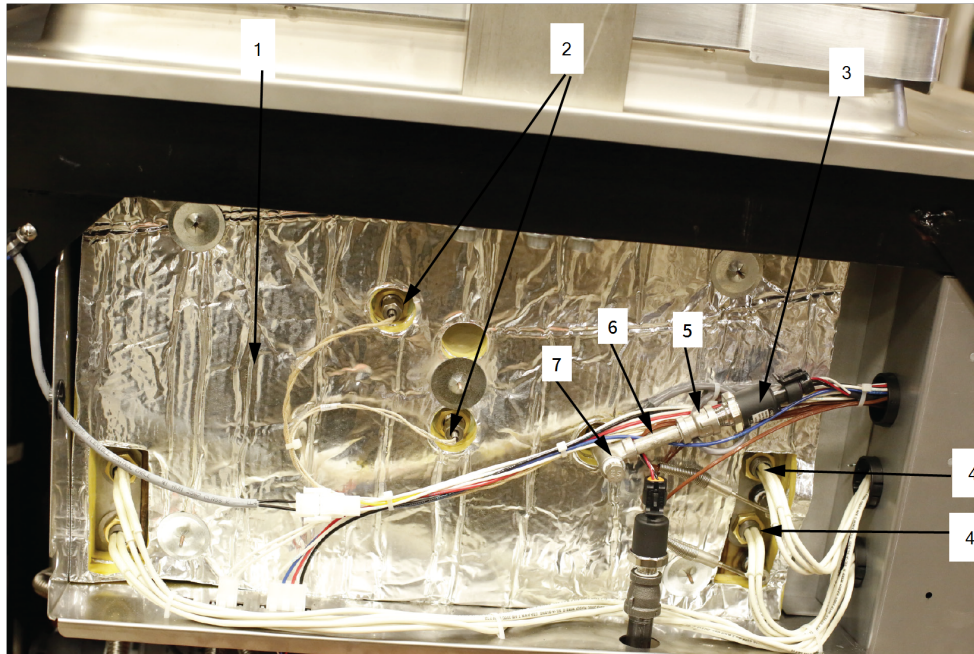
For the most up-to-date parts information, visit  
<https://parts.hennypennyhelp.com>.

Item No.	Part No.	Description	Qty.	Stocking Level
3	<a href="#">65073</a>	Coil secondary heat contactor, 24VAC	1	A
4	<a href="#">EF02-125</a>	Push button reset circuit breaker, 15 A	2	A
5*	<a href="#">EF02-104</a>	Fuse holder	1	A
6*	<a href="#">FA52-005</a>	Fuse, ATO Pump, 0.5 A	1	A
7	<a href="#">29509</a>	Coil primary (safety) contactor, 24 VAC	1	A
8	<a href="#">TS22-012</a>	AIF transformer	1	A
9	<a href="#">86087</a>	Transformer assembly, 240/24 VAC, 75VA	1	A
10*	<a href="#">ME90-008</a>	Coil pump motor relay, 12 VDC	1	A
11*	<a href="#">51065</a>	EMC filter board, CE	1	B
<b>Recommended Parts: A = Truck Stock; B = Dist. Stock</b> <b>* = Not Shown</b>				



For the most up-to-date parts information, visit  
<https://parts.hennypennyhelp.com>.

## Probes: Left Side Vat



Item No.	Part No.	Description	Qty.	Stocking Level
1	<a href="#">94229</a>	Left-side vat insulation	1	
2	<a href="#">154252</a>	2 in. RTD probe assembly	2	A
2*	<a href="#">152433</a>	RTD compression fitting	2	
3	<a href="#">79213</a>	30 PSI pressure transducer	1	A
4	<a href="#">140563</a>	Upper high-limit with RTD protection probe kit, UL (Before 5/2017)	1	
4	<a href="#">162535</a>	Upper high-limit with RTD protection probe, UL (5/2017 to 12/2020)	1	A
4	<a href="#">93968</a>	Lower high-limit single thermocouple, UL (Before 12/2020)	1	A



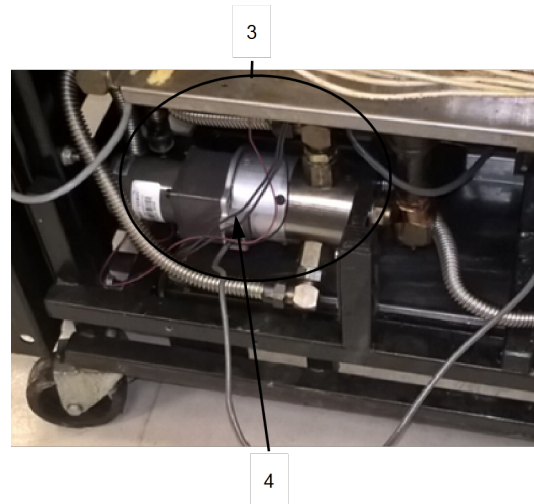
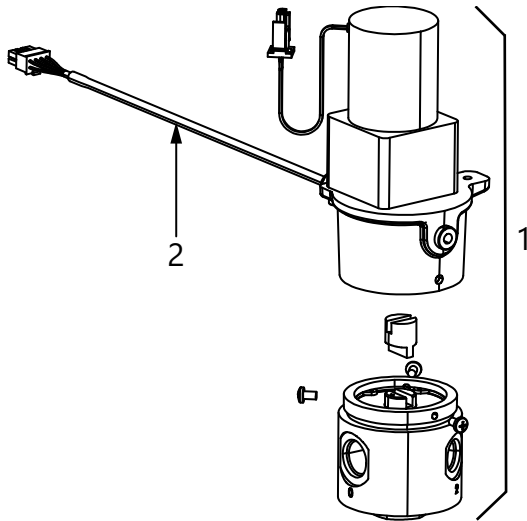
For the most up-to-date parts information, visit  
<https://parts.hennypennyhelp.com>.

Item No.	Part No.	Description	Qty.	Stocking Level
4	<a href="#">140564</a>	Upper high-limit with RTD protection probe kit, CE (Before 5/2017)	1	
4	<a href="#">162523</a>	Upper high-limit with RTD protection probe, CE (After 5/2017), UL (After 12/2020)	1	A
4	<a href="#">156986</a>	Lower high-limit dual thermocouple, CE (all units), UL (After 12/2020)	1	A
5	<a href="#">FP01-297</a>	1/4 NPT x 1/8 NPT, SS, reducer	1	
6	<a href="#">FP02-092</a>	1/8 NPT x 2 in, long, SS, pipe nipple	1	
7	<a href="#">FP01-315</a>	1/8 NPT, female, SS, pipe tee	1	
8*	<a href="#">93915</a>	Transducer fitting	1	
9*	<a href="#">16855</a>	O-ring	1	
10*	<a href="#">WA01-005</a>	Washer, 5/8 diameter	1	
11*	<a href="#">NS01-017</a>	Nut, 5/8-18	1	
12*	<a href="#">94061-001</a>	Transducer harness with clip	A/R	
<b>Recommended Parts: A = Truck Stock; B = Dist. Stock</b> <b>* = Not Shown</b>				



For the most up-to-date parts information, visit  
<https://parts.hennypennyhelp.com>.

## Selector Valve Assembly



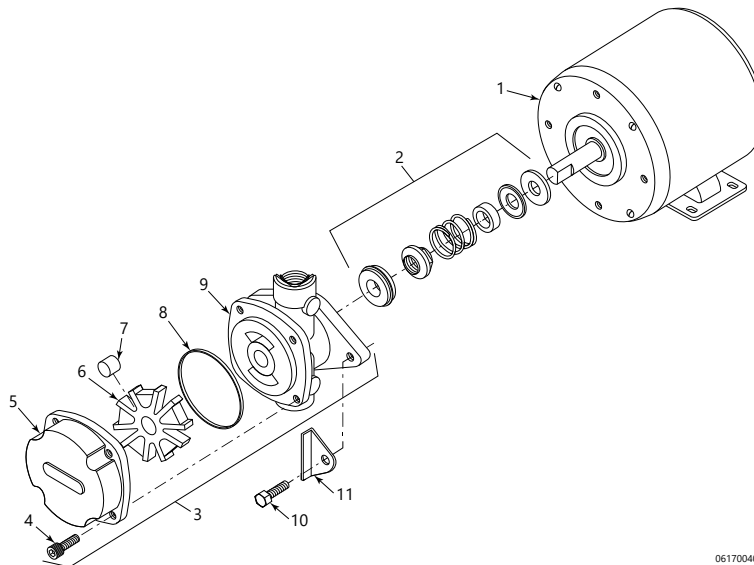
Item No.	Part No.	Description	Qty.	Stocking Level
1	<a href="#">170144-005</a>	3 port selector valve with motor/encoder assembly INFO: <ul style="list-style-type: none"> <li>Selector valve is not sold separate from motor/encoder. Order 170144-005 to replace the selector valve.</li> </ul>	1	B
2	<a href="#">153067</a>	Motor/encoder harness only (before 09/30/2018 old design)	1	
3	<a href="#">140617</a>	Motor/encoder only replacement kit (after 09/30/2018 new sealed design)	1	B
4	<a href="#">140618</a>	Motor/encoder replacement harness only kit (after 09/30/2018 new sealed design)	1	
<b>Recommended Parts: A = Truck Stock; B = Dist. Stock</b> <b>* = Not Shown</b>				



For the most up-to-date parts information, visit  
<https://parts.hennypennyhelp.com>.

## Filter Pump Motor Assemblies

### Flange Mount Filter Pump Motor Assembly



06170040

Item No.	Part No.	Description	Qty.	Stocking Level
1	<a href="#">67583</a>	Motor, 1/2 HP, 60 Hz	1	A
1	<a href="#">163147</a>	Motor, 1/2 HP, 50 Hz (On CE units pre-Sept 2016 replace condensate tank with <a href="#">163939</a> )	1	A
2	<a href="#">17476</a>	Seal kit	1	A
3	<a href="#">162497</a>	8 GPM pump assembly	1	B
4	<a href="#">SC01-132</a>	- Pump cover screw	1	
5	<a href="#">162502</a>	- Pump cover	1	
6	<a href="#">162500</a>	- Pump rotor, Haight only	1	
7	<a href="#">162501</a>	- Pump roller (set of 5), Haight only	1	A



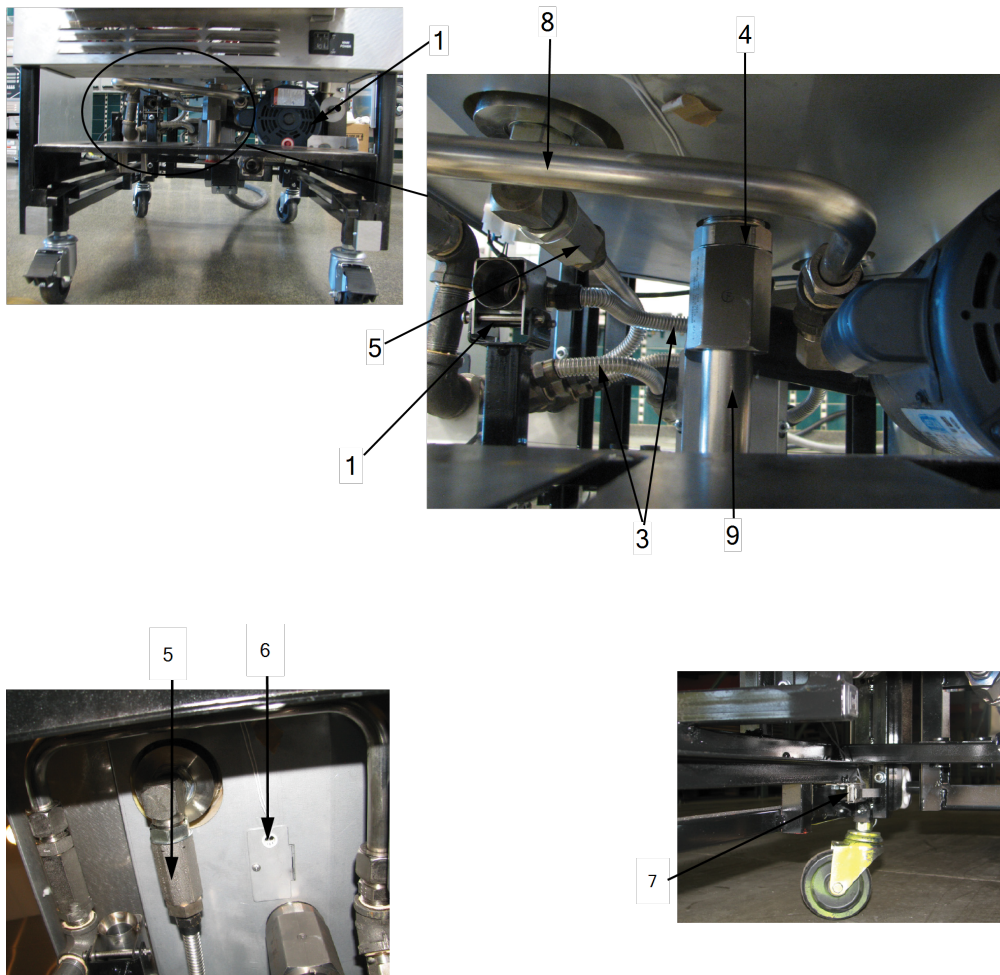
For the most up-to-date parts information, visit  
<https://parts.hennypennyhelp.com>.

Item No.	Part No.	Description	Qty.	Stocking Level
8	<a href="#">162498</a>	- O-ring	1	B
9	N/A	Pump body not sold separately. Use <a href="#">171168</a> .		
10	<a href="#">SC01-026</a>	Pump motor shield screw	1	
11	<a href="#">140499</a>	Pump motor, seal, and condensate tank kit, 50 Hz, (CE Units before 9/16)	1	
<b>Recommended Parts: A = Truck Stock; B = Dist. Stock</b>				



For the most up-to-date parts information, visit <https://parts.hennypennyhelp.com>.

## Bottom of Fryer



Item No.	Part No.	Description	Qty.	Stocking Level
1		<a href="#">Filter pump motor</a>	1	B
3	<a href="#">77523-001</a>	Flex line, 12 in	A/R	
3	<a href="#">77523-002</a>	Flex line, 18 in	A/R	
3	<a href="#">77523-011</a>	Flex line, 10 in	A/R	



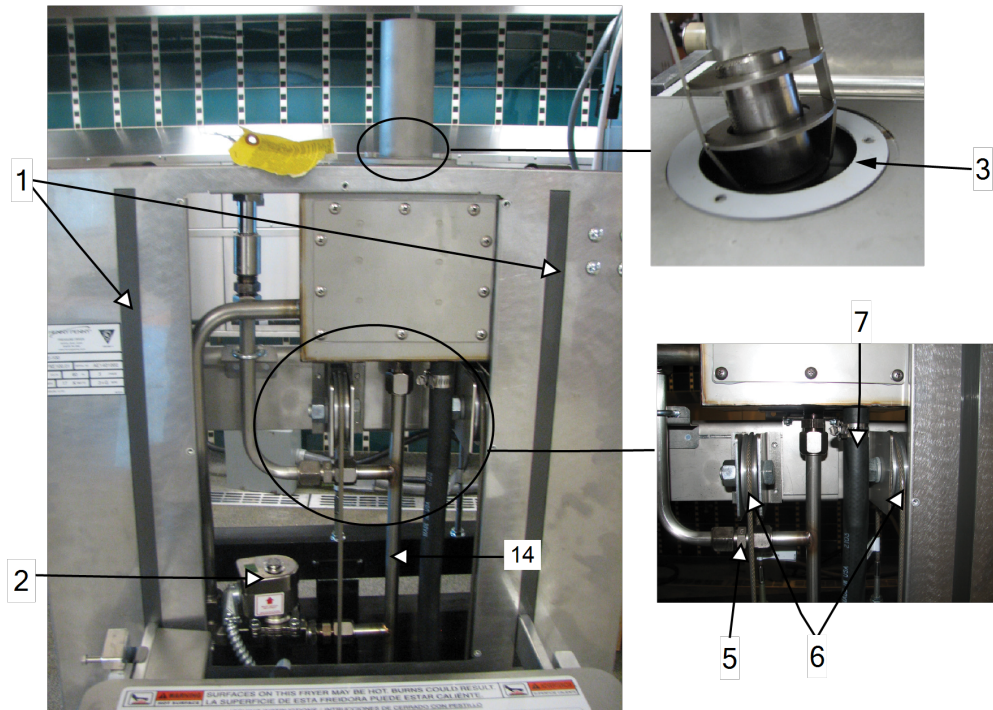
For the most up-to-date parts information, visit  
<https://parts.hennypennyhelp.com>.

Item No.	Part No.	Description	Qty.	Stocking Level
4	<a href="#">175835</a>	Drain valve (only) with O-ring kit	1	B
4	<a href="#">84415</a>	- Drain valve O-ring (only)	1	B
4*	<a href="#">169857</a>	Actuator (only)	1	B
5	<a href="#">90506-001</a>	Check Valve, 3 psi, SAE 12	A/R	A
6	<a href="#">154252</a>	2 in. RTD probe assembly	1	A
7	<a href="#">91700</a>	Drain pan switch with connector assembly	1	A
8*	<a href="#">140444</a>	Pump outlet plumbing, flex line retrofit kit (non-bulk oil, without selector valve) (For units built 9/2015 & before)	1	
8*	<a href="#">140446</a>	Pump outlet plumbing, flex line retrofit kit (bulk oil, with selector valve) (For units built 9/2015 & before)	1	
8	<a href="#">159050</a>	Pump to manifold tube (For units built 9/2015 & after)	1	
9	<a href="#">94458</a>	Drain valve extension	1	
10*	<a href="#">91650</a>	ATO reservoir plug and play connection		
11*	<a href="#">FP01-292</a>	90-degree fitting for check valve	1	
12*	<a href="#">91650</a>	Filter plug and play assembly	1	
13*	<a href="#">FP01-242</a>	Fitting 1/2 NPT male to 45 flare female	1	
14*	<a href="#">85458-001</a>	Flexline, 18 in, diameter 3/4 in	1	
<b>Recommended Parts: A = Truck Stock; B = Dist. Stock</b> <b>* = Not Shown</b>				



For the most up-to-date parts information, visit  
<https://parts.hennypennyhelp.com>.

## Front Top of Fryer



Item No.	Part No.	Description	Qty.	Stocking Level
1	<a href="#">175727</a>	Nylatron slide service pack	1	A
2	<a href="#">85145</a>	Solenoid valve, 208/240 VAC 60 Hz (3/4 in)	1	B
2*	<a href="#">179378</a>	- Solenoid valve repair kit (3/4 in.)	1	A
2*	<a href="#">180331</a>	- Solenoid coil, 208-240 VAC, 60Hz	1	B
2	<a href="#">154282</a>	Solenoid valve, 220/240 VAC 50 Hz (3/4 in)	1	B
2*	<a href="#">179378</a>	- Solenoid valve repair kit (3/4 in.)	1	A
2*	<a href="#">180330</a>	- Solenoid coil, 240 VAC, 50Hz	1	B
3	<a href="#">94941</a>	Dead weight holder gasket	1	



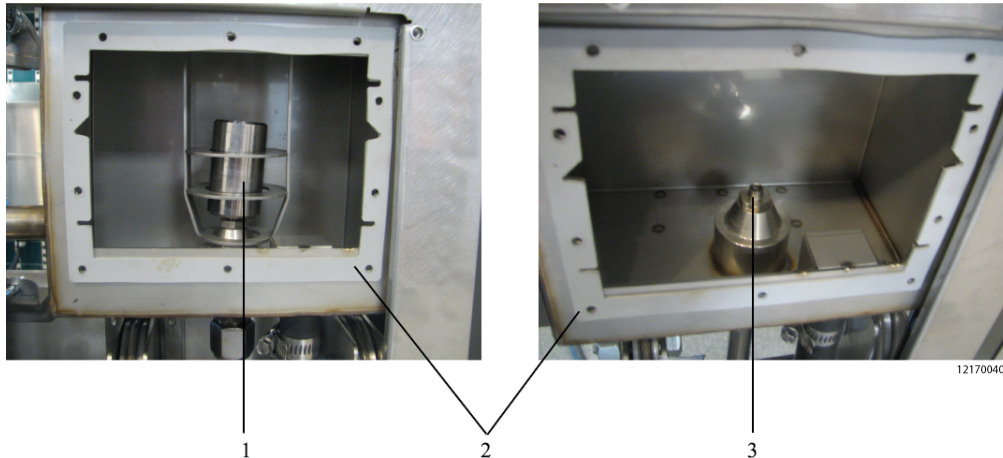
For the most up-to-date parts information, visit  
<https://parts.hennypennyhelp.com>.

Item No.	Part No.	Description	Qty.	Stocking Level
4*	<a href="#">SC06-093</a>	Knurl cross tip screw, 10-32 x 1/2 in	3	
5	<a href="#">FP01-202</a>	Straight connector fitting, male	1	
6	<a href="#">35962</a>	Lid cable pulley	2	
7	<a href="#">94377</a>	Steam box condensate hose	1	
8*		See <a href="#">Filter Pump and Motor Assembly</a>		
9*	<a href="#">FP01-169</a>	Solenoid valve outlet elbow, 3/4 NPT x 3/4 tube	1	
10*	<a href="#">140610</a>	Lid cable kit	1	C
11*	<a href="#">FP01-169</a>	Right angle fitting (elbow for solenoid valve)	1	
12*	<a href="#">FP01-078</a>	Male-to-female reducer fitting	1	
13*	<a href="#">16807</a>	male-to-male fitting (inlet fitting for solenoid valve)	1	
14	<a href="#">94371</a>	Steam box manifold tube	1	
15*	<a href="#">FP01-011</a>	Pipe tee, 1/2 NPT, SS	1	
16*	<a href="#">FP01-004</a>	Pipe plug, 1/2 hex, SS	1	
<b>Recommended Parts: A = Truck Stock; B = Dist. Stock</b> <b>* = Not Shown</b>				



For the most up-to-date parts information, visit  
<https://parts.hennypennyhelp.com>.

## Steam Stack and Deadweight



Item No.	Part No.	Description	Qty.	Stocking Level
1	<a href="#">16903</a>	12 PSI deadweight (only)	1	C
2	<a href="#">140698</a>	Steam box kit	1	B
2	<a href="#">152020</a>	- Steam box (12-hole only)	1	
2*	<a href="#">152067</a>	- Steam box cover (12-hole only)	1	
2	<a href="#">152101</a>	- Steam box cover gasket (12-hole only)	1	
3	<a href="#">16918</a>	12 PSI orifice	1	
4*	<a href="#">140622</a>	Orifice cleanout tool kit (PXE only)	1	
5*	<a href="#">140646</a>	Steam stack with deadweight kit (includes deadweight)	1	
5*	<a href="#">174201</a>	Steam stack and cage assembly (excludes deadweight)	1	
5*	<a href="#">150654</a>	- Steam stack rubber tube	1	



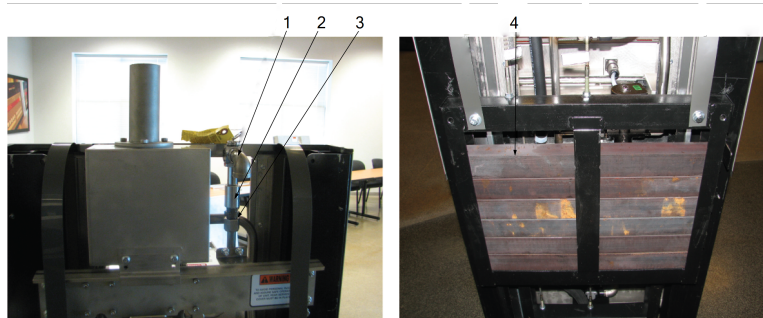
For the most up-to-date parts information, visit  
<https://parts.hennypennyhelp.com>.

Item No.	Part No.	Description	Qty.	Stocking Level
5*	<a href="#">MS01-107</a>	- Silastic sealer	1	
5*	<a href="#">94371</a>	- Steambox manifold piping	A/R	
<b>Recommended Parts: A = Truck Stock; B = Dist. Stock</b> <b>* = Not Shown</b>				



For the most up-to-date parts information, visit  
<https://parts.hennypennyhelp.com>.

## Counterweight and Safety Relief Valve



Item No.	Part No.	Description	Qty.	Stocking Level
1	<a href="#">59742</a>	Safety relief valve assembly	1	A
2	<a href="#">FP01-066</a>	Coupling	1	
3	<a href="#">FP01-202</a>	Straight connector fitting, male	1	
4	<a href="#">94259</a>	Counterweight bar, full, 2 in (50 mm)	A/R	
5*	<a href="#">167010</a>	Counterweight bar, half, 1 in (25 mm)	A/R	
6*	<a href="#">140536</a>	Optional pressure gauge kit	1	
7*	<a href="#">36626</a>	Counterweight frame spacer	2	
8*	<a href="#">67099</a>	Counterweight carriage wheels	4	
9*	<a href="#">94253</a>	Counterweight carriage	1	

Recommended Parts: A = Truck Stock; B = Dist. Stock

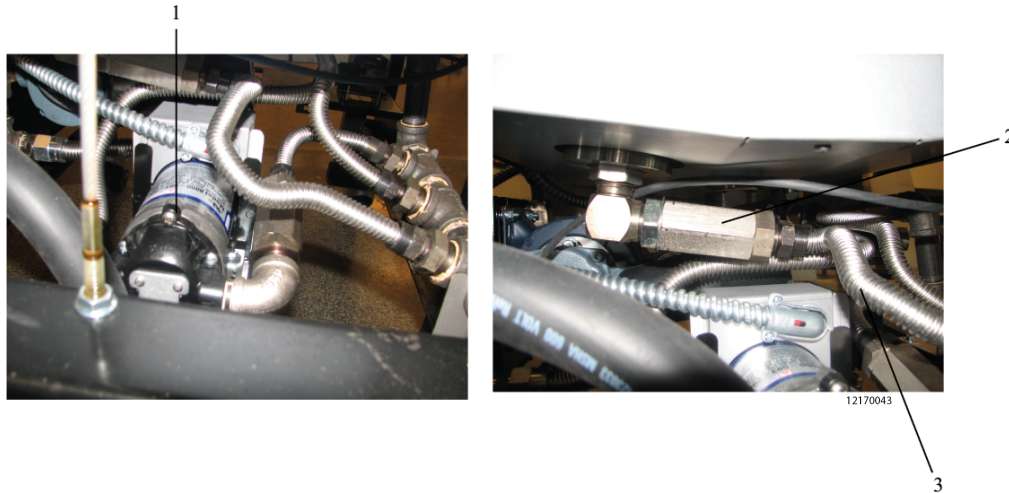
\* = Not Shown

A/R = As Required



For the most up-to-date parts information, visit  
<https://parts.hennypennyhelp.com>.

## ATO Pump and Check Valve

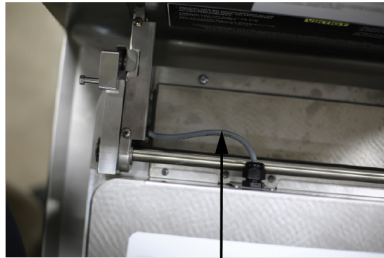


Item No.	Part No.	Description	Qty.	Stocking Level
1	<a href="#">97657</a>	ATO pump service pack, 208-230 VAC (before May 1, 2015)	1	B
1	<a href="#">153417-002</a>	ATO pump motor, 208-230 VAC (May 1, 2015 and after )	1	A
2	<a href="#">90506-001</a>	Check valve, SAE 12, 3 PSI	A/R	A
3	<a href="#">77523-002</a>	Flex line, 18 in, diameter 1/2 in	1	
3	<a href="#">77523-011</a>	Flex line, 10 in, diameter 1/2 in	1	
3	<a href="#">77523-001</a>	Flex line, 12 in, diameter 1/2 in	1	
<b>Recommended Parts: A = Truck Stock; B = Dist. Stock</b> <b>* = Not Shown</b> <b>A/R = As Required</b>				

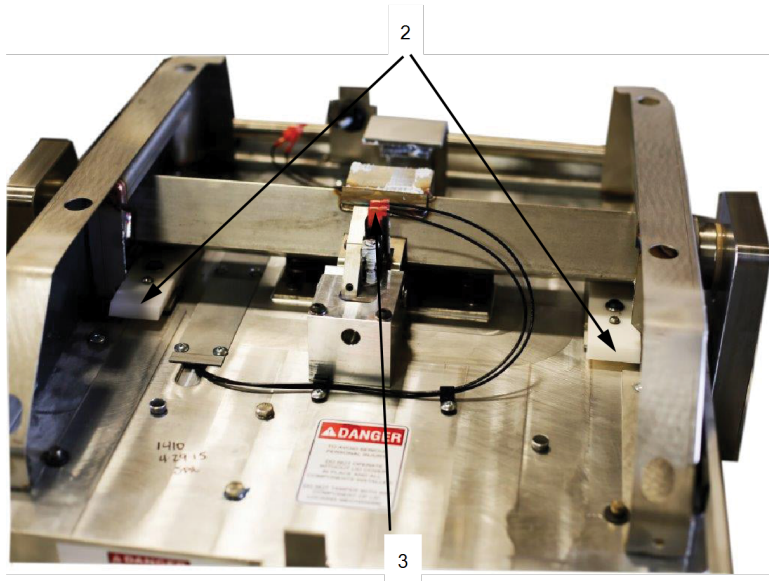


For the most up-to-date parts information, visit  
<https://parts.hennypennyhelp.com>.

## Lid Safety Switch

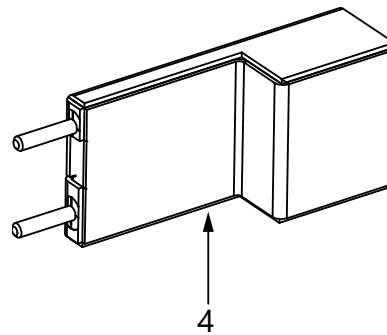


1



2

3



4

Item No.	Part No.	Description	Qty.	Stocking Level
1	<a href="#">157254-001</a>	Lid interlock switch cable (only)	1	
2	<a href="#">52627</a>	Pressure pad assembly	2	
3	<a href="#">151464</a>	Lid interlock switch	1	



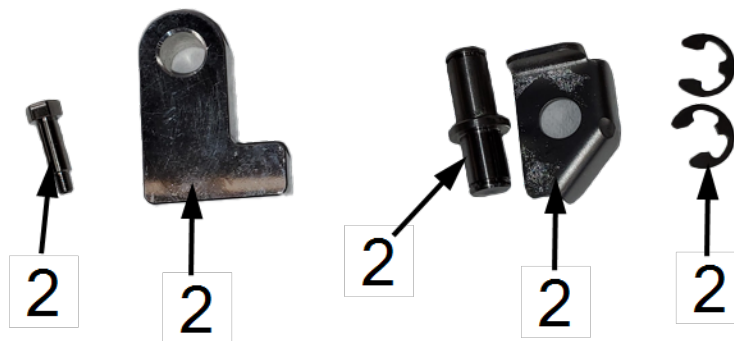
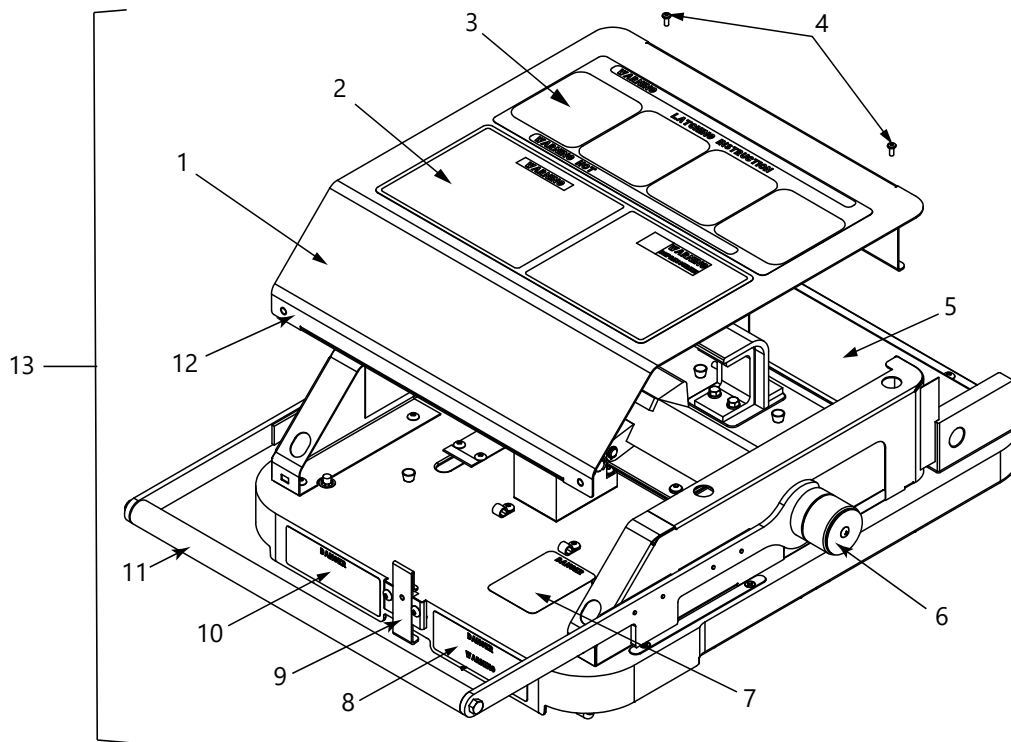
For the most up-to-date parts information, visit  
<https://parts.hennypennyhelp.com>.

Item No.	Part No.	Description	Qty.	Stocking Level
4	<a href="#">157089</a>	Lid wiring raceway stud assembly	2	
5*	<a href="#">157257-001</a>	Lid interlock switch harness	1	
<b>Recommended Parts: A = Truck Stock; B = Dist. Stock</b> <b>* = Not Shown</b>				



For the most up-to-date parts information, visit  
<https://parts.hennypennyhelp.com>.

## Lid Assembly



Item No.	Part No.	Description	Qty.	Stocking Level
1	--	Lid cover and labels. See <a href="#">Lid Labels</a>	1	



For the most up-to-date parts information, visit  
<https://parts.hennypennyhelp.com>.

Item No.	Part No.	Description	Qty.	Stocking Level
2	--	Operation hazard label part (E). See <a href="#">Lid Labels</a>	--	
3	--	Lid instruction label part (A). See <a href="#">Lid Labels</a>	--	
4	<a href="#">SC04-003</a>	Lid screw, 8-32 UNC (qty.50)	--	
5	<a href="#">152084</a>	Rear lid cover	1	
6	<a href="#">140440</a>	Lid roller kit	1	
7	--	Lid danger label part (B). See <a href="#">Lid Labels</a>	--	
8	--	Danger shortening label part (D). See <a href="#">Lid Labels</a>	--	
9	<a href="#">92712</a>	Upper lid latch	1	
10	--	Danger stirring label part (C). See <a href="#">Lid Labels</a>	--	
11	<a href="#">92168</a>	Lid handle	1	
11*	<a href="#">SC01-041</a>	Hex bolt for lid handle, 5/16-18 X 1	2	
12	<a href="#">153693-001</a>	Lid edge seal	1	
13	164993-XXX	Lid and cover assembly. See Lid and Cover Assemblies	--	C
14*	<a href="#">92822</a>	Cam guide, right	1	
15*	<a href="#">92824</a>	Cam guide, left	1	
16*	<a href="#">SC01-204</a>	Cam guide screw, 1/4-20 UNC (qty. 50)	--	
17*	<a href="#">SC01-303</a>	Lid cover screw, 10-24 UNC (qty. 50)	--	



For the most up-to-date parts information, visit  
<https://parts.hennypennyhelp.com>.

Item No.	Part No.	Description	Qty.	Stocking Level
18*	<a href="#">SC01-284</a>	Lid liner screw, 6-32 UNC (qty. 50)	--	
19*	<a href="#">SC01-063</a>	Gasket retainer screw, 6-32 UNC (qty. 50)	--	
20*	<a href="#">35359</a>	Slide, 6 in.	2	
21*	<a href="#">93222</a>	Cam slide filler	2	A
22	<a href="#">96405</a>	Screw, Hex HD 1/4 x .656 SHLDR	1	
23	<a href="#">92732</a>	Lid stop arm	1	
24	<a href="#">92745</a>	Pin, pivot kickstand	1	
25	<a href="#">92843</a>	Lid stop (kickstand)	1	
26	<a href="#">RR01-004</a>	Retaining ring, 1/2 in.	2	
27*	<a href="#">52498</a>	Lid latch spring	1	
28*	<a href="#">92546</a>	Lid hinge pin	1	
29*	<a href="#">36312</a>	Lid hinge pin washer	2	
30*	<a href="#">RR01-010</a>	Lid hinge pin retaining ring	2	
31*	<a href="#">150450</a>	Cover, left side	1	
32*	<a href="#">150212</a>	Cover, right side	1	
33*	<a href="#">35339</a>	Guide, handle side	4	
34*	<a href="#">SC01-003</a>	Screw, Guide-handle side	8	

**Recommended Parts: A = Truck Stock; B = Dist. Stock**  
**\* = Not Shown**



For the most up-to-date parts information, visit  
<https://parts.hennypennyhelp.com>.

## Lid and Cover Assemblies

			Part (A)	Part (B)	Part (C)	Part (D)	Part (E)
Part No.	Description	Language	Lid Instruction Label	Lid Danger Label	Danger Stirring Label	Danger Shortening Label	Operational Hazard Label
16499-3-001	Lid and Cover Assembly	English	<a href="#">67329</a>	<a href="#">35822</a>	<a href="#">96882</a>	<a href="#">96881</a>	<a href="#">96618</a>
16499-3-002	Lid and Cover Assembly	English and French	<a href="#">35792</a>	<a href="#">35822</a>	<a href="#">97911</a>	<a href="#">97910</a>	<a href="#">97912</a>
16499-3-003	Lid and Cover Assembly	Spanish	<a href="#">67392</a>	<a href="#">45741</a>	<a href="#">97079</a>	<a href="#">97084</a>	<a href="#">97074</a>
16499-3-004	Lid and Cover Assembly	Dutch	<a href="#">97444</a>	<a href="#">55456</a>	<a href="#">97443</a>	<a href="#">97442</a>	<a href="#">97440</a>
16499-3-005	Lid and Cover Assembly	Polish	<a href="#">97595</a>	<a href="#">61431</a>	<a href="#">97594</a>	<a href="#">97593</a>	<a href="#">97591</a>
16499-3-006	Lid and Cover Assembly	Russian	<a href="#">97456</a>	<a href="#">97451</a>	<a href="#">97082</a>	<a href="#">97087</a>	<a href="#">97077</a>
16499-3-007	Lid and Cover Assembly	German	<a href="#">34473</a>	<a href="#">34474</a>	<a href="#">97078</a>	<a href="#">97083</a>	<a href="#">97073</a>



For the most up-to-date parts information, visit  
<https://parts.hennypennyhelp.com>.

			Part (A)	Part (B)	Part (C)	Part (D)	Part (E)
Part No.	Description	Language	Lid Instruction Label	Lid Danger Label	Danger Stirring Label	Danger Shortening Label	Operational Hazard Label
16499-3-008	Lid and Cover Assembly	Swedish	46887	61341	97701	97700	97698
16499-3-009	Lid and Cover Assembly	Portuguese	54986	61262	97739	97738	97736
16499-3-010	Lid and Cover Assembly	French	35792	52203	97081	97086	97076
16499-3-011	Lid and Cover Assembly	Arabic	97475	96912	97474	97473	97471
16499-3-012	Lid and Cover Assembly	Italian	97665	61381	97664	97663	97661
16499-3-013	Lid and Cover Assembly	Chinese	82356	82359	97977	97976	97967
16499-3-014	Lid and Cover Assembly	Turkish	166047	166048	166211	166055	166051



For the most up-to-date parts information, visit  
<https://parts.hennypennyhelp.com>.

## Lid and Labels

### Lid Cover with Labels

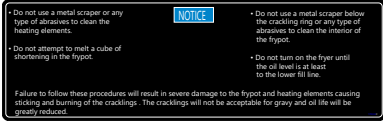
### Lid Label Replacement Kits

Item No.	Part No.	Description	Qty.	Stocking Level
	140626	USA label replacement kit, GM	1	
	140628	Australia label replacement kit, GM	1	
<b>Recommended Parts: A = Truck Stock; B = Dist. Stock</b> <b>* = Not Shown</b>				

### Acrylic Lasered Labels

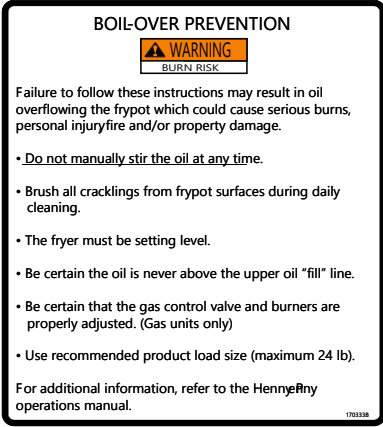
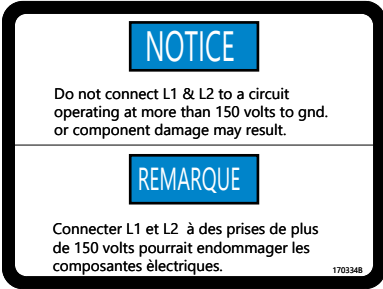

These labels are thicker and should be used in place of the standard Mylar labels under the following circumstances:

- Required by agency.
- Mylar label peels due to environment.

Part No.	Description	Image
170332	Shortening melt label (GM)	 <p><b>NOTICE</b></p> <ul style="list-style-type: none"> <li>• Do not use a metal scraper or any type of abrasives to clean the heating elements.</li> <li>• Do not attempt to melt a cube of shortening in the Frypot.</li> <li>• Do not use a metal scraper below the crackling line or any type of abrasives to clean the interior of the Frypot.</li> <li>• Do not turn on the fryer until the oil level is at least to the lower fill line.</li> </ul> <p>Failure to follow these procedures will result in severe damage to the Frypot and heating elements causing sliding and burning of the crackling. The cracklings will not be acceptable for gravy and oil life will be greatly reduced.</p>

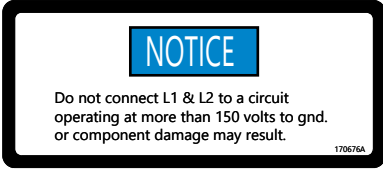





For the most up-to-date parts information, visit  
<https://parts.hennypennyhelp.com>.

Part No.	Description	Image
170333	Boilover prevention label (GM)	
170334	Voltage to ground label	
170336	Secure appliance label	
170632	Lid danger (pressure) label	


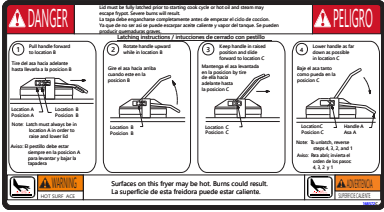
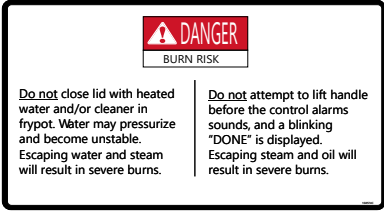

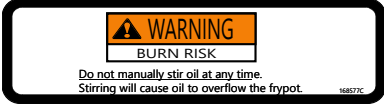


For the most up-to-date parts information, visit  
<https://parts.hennypennyhelp.com>.

Part No.	Description	Image
170676	Voltage to ground label	
168024	Hot surface warning label	
185980	Drain pan warning label	
168569	Disconnect power label	
168570	Lid danger label (pressure)	



For the most up-to-date parts information, visit  
<https://parts.hennypennyhelp.com>.

Part No.	Description	Image
168571	Service cover label	
168572	Lid instruction label (pressure)	
168574	Operation manual label	
168576	Shortening danger label	
168577	Oil stirring danger label	
* = Not Shown		



For the most up-to-date parts information, visit  
<https://parts.hennypennyhelp.com>.

## KFC Pressure Fryer Safety Inspection Tag

Part No.	Inspection Year	Tag Color	Expiring Year
167160-020	2020	Black	2021
167160-021	2021	Red	2022
167160-022	2022	Blue	2023
167160-023	2023	Yellow	2024
167160-024	2024	Green	2025
167160-025	2025	Black	2026
167160-026	2026	Red	2027
167160-027	2027	Blue	2028
167160-028	2028	Yellow	2029
167160-029	2029	Green	2030