

Commercial Service Parts

CHARBROILER (HCH)

Hestan Commercial Corporation
3375 E. La Palma Ave.
Anaheim, CA 92806
(888) 905-7463

RETAIN THIS FOR FUTURE REFERENCE

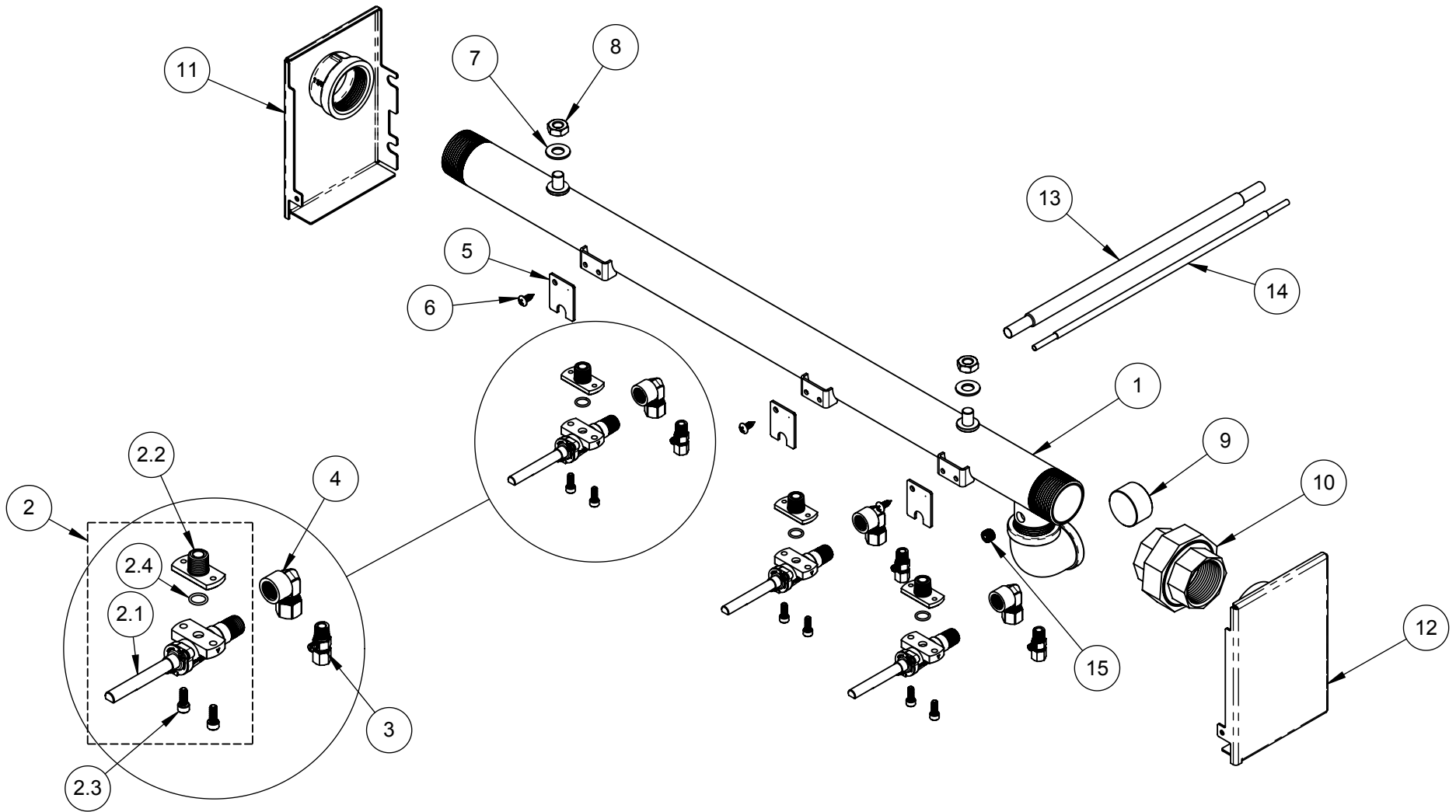
Revised: May 15, 2020

CHARBROILER - SERVICE PARTS LIST

| Item No. | Part No. | DESCRIPTION | HCH18 | HCH24 | HCH30 | HCH36 | HCH48 | HCH60 | HCH72 |
|----------|----------|---|-------|-------|-------|-------|-------|-------|-------|
| | | | QTY | QTY | QTY | QTY | QTY | QTY | QTY |
| 1 | 000804 | FIREBOX, CHAR-BROILER, WA, 18 | 1 | - | - | - | - | - | - |
| | 000959 | FIREBOX, CHAR-BROILER, WA, 24 | - | 1 | - | - | - | - | - |
| | 000953 | FIREBOX, CHAR-BROILER, WA, 30 | - | - | 1 | - | - | - | - |
| | 000140 | FIREBOX, CHAR-BROILER, WA, 36 | - | - | - | 1 | - | - | - |
| | 001010 | FIREBOX, CHAR-BROILER, WA, 48 | - | - | - | - | 1 | - | - |
| | 001021 | FIREBOX, CHAR-BROILER, WA, 60 | - | - | - | - | - | 1 | - |
| | 001019 | FIREBOX, CHAR-BROILER, WA, 72 | - | - | - | - | - | - | 1 |
| 2 | 000830 | SUPPORT, GRATE, CHAR-BROILER, 15.7" WA | 1 | - | 1 | - | - | - | - |
| | 000125 | SUPPORT, GRATE, CHAR-BROILER, 11.0" WA | - | 2 | 1 | 3 | 4 | 5 | 6 |
| 3 | 003341 | RADIANT, NARROW, CHAR-BROILER, WA | 1 | 2 | 1 | - | - | - | - |
| | 004319 | RADIANT, CHAR-BROILER, WA, 18/30 | 1 | - | 1 | - | - | - | - |
| | 001358 | RADIANT, CHAR-BROILER, WA | - | - | 1 | 3 | 4 | 5 | 6 |
| 4 | 000259 | BURNER, U-TUBE, 40K BTU, OVEN/CHARBROILER | 1 | 2 | 2 | 3 | 4 | 5 | 6 |
| 5 | 000839 | BURNER, TUBE, 20000 BTU | 1 | - | 1 | - | - | - | - |
| 6 | 000828 | GRATE, CAST IRON, 7.86", CHAR-BROILER | 2 | - | 2 | - | - | - | - |
| | 000129 | GRATE, CAST IRON, 5.50", CHAR-BROILER | - | 4 | 2 | 6 | 8 | 10 | 12 |
| 7 | 001960 | PLATE, SEAR, 11", CHAR-BROILER, WA | - | X | - | X | X | X | X |
| 8 | 001970 | PLATE, SEAR, 15.7", CHAR-BROILER, WA | X | - | X | - | - | - | - |
| 9 | 002612 | GRATE, SS ROD, 15.8", CHAR-BROILER | 1 | - | 1 | - | - | - | - |
| | 002607 | GRATE, SS ROD, 11", CHAR-BROILER | - | 2 | 1 | 3 | 4 | 5 | 6 |
| 10 | 001841 | HEAT SHIELD, L/R, CHAR-BROILER | 2 | 2 | 2 | 2 | 2 | 2 | 2 |
| | 000138 | HEAT SHIELD, CTR, CHAR-BROILER | - | 1 | 2 | 4 | 4 | 6 | 8 |
| 11 | 000130 | KNOB ASSY, ON-OFF, 100% | 2 | 2 | 3 | 3 | 4 | 5 | 6 |
| 11.1 | 014299 | SERVICE, SETSCREW, #10-24 X 1.000, CUP PT., SS, PKG 6 | 1 | 1 | 1 | 1 | 1 | 1 | 1 |
| 12 | 004283 | PANEL, CONTROL, CHAR-BROILER, ASSY., 18 | 1 | - | - | - | - | - | - |
| | 004290 | PANEL, CONTROL, CHAR-BROILER, ASSY., 24 | - | 1 | - | - | - | - | - |
| | 004291 | PANEL, CONTROL, CHAR-BROILER, ASSY., 30 | - | - | 1 | - | - | - | - |
| | 001852 | PANEL, CONTROL, CHAR-BROILER, ASSY., 36 | - | - | - | 1 | - | - | - |
| | 004293 | PANEL, CONTROL, CHAR-BROILER, ASSY., 48 | - | - | - | - | 1 | - | - |

| Item No. | Part No. | DESCRIPTION | HCH18 | HCH24 | HCH30 | HCH36 | HCH48 | HCH60 | HCH72 |
|----------|--------------------------------------|---|-------|-------|-------|-------|-------|-------|-------|
| | | | QTY | QTY | QTY | QTY | QTY | QTY | QTY |
| | 004299 | PANEL, CONTROL, CHAR-BROILER, ASSY., 60 | - | - | - | - | - | 1 | - |
| | 004301 | PANEL, CONTROL, CHAR-BROILER, ASSY., 72 | - | - | - | - | - | - | 1 |
| 12.1 | 012672 | SERVICE, SMS, 10-24 X 1/2, PH, PAN, TYPE F, SS, PKG 4 | 1 | 1 | 1 | 1 | 1 | 1 | 2 |
| 13 | AHCSS18 | ASSY., SIDE & REAR SPLASH, CHAR-BROILER, 18 | 1 | - | - | - | - | - | - |
| | AHCSS24 | ASSY., SIDE & REAR SPLASH, CHAR-BROILER, 24 | - | 1 | - | - | - | - | - |
| | AHCSS30 | ASSY., SIDE & REAR SPLASH, CHAR-BROILER, 30 | - | - | 1 | - | - | - | - |
| | AHCSS36 | ASSY., SIDE & REAR SPLASH, CHAR-BROILER, 36 | - | - | - | 1 | - | - | - |
| | AHCSS48 | ASSY., SIDE & REAR SPLASH, CHAR-BROILER, 48 | - | - | - | - | 1 | - | - |
| | AHCSS60 | ASSY., SIDE & REAR SPLASH, CHAR-BROILER, 60 | - | - | - | - | - | 1 | - |
| | AHCSS72 | ASSY., SIDE & REAR SPLASH, CHAR-BROILER, 72 | - | - | - | - | - | - | 1 |
| 14 | 000791 | ASSY., DRIP PAN, CHAR-BROILER, 18 | 1 | - | - | - | - | - | - |
| | 002927 | ASSY., DRIP PAN, CHAR-BROILER, 24 | - | 1 | - | - | - | - | - |
| | 000785 | ASSY., DRIP PAN, CHAR-BROILER, 30 | - | - | 1 | - | - | - | - |
| | 000373 | ASSY., DRIP PAN, CHAR-BROILER, 36 | - | - | - | 1 | - | - | - |
| | 004892 | ASSY., DRIP PAN, CHAR-BROILER, 48 LH | - | - | - | - | 1 | - | - |
| | 004893 | ASSY., DRIP PAN, CHAR-BROILER, 48 RH | - | - | - | - | 1 | - | - |
| | 004931 | ASSY., DRIP PAN, CHAR-BROILER, 60 LH | - | - | - | - | - | 1 | - |
| | 004932 | ASSY., DRIP PAN, CHAR-BROILER, 60 RH | - | - | - | - | - | 1 | - |
| | 000980 | ASSY., DRIP PAN, CHAR-BROILER, 72 LH | - | - | - | - | - | - | 1 |
| 000981 | ASSY., DRIP PAN, CHAR-BROILER, 72 RH | - | - | - | - | - | - | 1 | |
| 14.1 | 010237 | SERVICE, MS, 10-24 X 1/4, HEXHD, SS, PKG 6 | 1 | 1 | 1 | 1 | 1 | 1 | 1 |
| 15 | 000293-033 | ORIFICE, HOOD (NG) "U BURNER" | 1 | 2 | 2 | 3 | 4 | 5 | 6 |
| | 000293-047 | ORIFICE, HOOD (NG) "STRAIGHT BURNER" | 1 | - | 1 | - | - | - | - |
| | 000293-051 | ORIFICE, HOOD (LP) "U BURNER" | 1 | 2 | 2 | 3 | 4 | 5 | 6 |
| | 000293-055 | ORIFICE, HOOD (LP) "STRAIGHT BURNER" | 1 | - | 1 | - | - | - | - |
| 16 | 000917 | HOLDER, ORIFICE, BULKHEAD, SMALL | 2 | 2 | 3 | 3 | 4 | 5 | 6 |
| 17 | 001840 | BRACKET, ORIFICE, CHAR-BROILER | 2 | 2 | 3 | 3 | 4 | 5 | 6 |
| 18 | 001650 | ASSY., PILOT BURNER, CHAR-BROILER (NG) | 2 | 2 | 3 | 3 | 4 | 5 | 6 |
| | 012274 | ASSY., PILOT BURNER, CHAR-BROILER (LP) | 2 | 2 | 3 | 3 | 4 | 5 | 6 |
| 19 | 014023 | SERVICE, MS, 10-32 X 1/4, HEXWAS, TAP-TITE, SS, PKG 3 | 2 | 2 | 3 | 3 | 4 | 5 | 6 |
| 20 | 014051 | SERVICE, SB, 5/16-18 X 3/8DIA X 5/16L, SS, PKG 4 | 1 | 2 | 2 | 2 | 2 | 3 | 3 |
| 21 | 000470 | ADJUSTABLE LEG, ASSY., 4" | 4 | 4 | 4 | 4 | 6 | 6 | 6 |
| 22 | 014191 | SERVICE, HB, 1/4-20 X 5/8, SS, PKG 4 | 4 | 4 | 4 | 4 | 6 | 6 | 6 |

| Item No. | Part No. | DESCRIPTION | HCH18 | HCH24 | HCH30 | HCH36 | HCH48 | HCH60 | HCH72 |
|----------|----------------------------------|---|-------|-------|-------|-------|-------|-------|-------|
| | | | QTY | QTY | QTY | QTY | QTY | QTY | QTY |
| 23 | 004163 | REGULATOR, STRAIGHT-THRU, 1"NPT, NG | 1 | 1 | 1 | 1 | 1 | 1 | 1 |
| | 004162 | REGULATOR, STRAIGHT-THRU, 1"NPT, LP | 1 | 1 | 1 | 1 | 1 | 1 | 1 |
| | 004165 | REGULATOR, STRAIGHT-THRU, 1-1/4"NPT, NG | 1 | 1 | 1 | 1 | 1 | 1 | 1 |
| | 004164 | REGULATOR, STRAIGHT-THRU, 1-1/4"NPT, LP | 1 | 1 | 1 | 1 | 1 | 1 | 1 |
| 24 | 010241 | SERVICE, SMS, #10 X .5, SLOT, HEXWSH, SS, PKG 4 | 1 | 1 | 1 | 1 | 1 | 1 | 2 |
| 25 | 014116 | SERVICE, HB, 1/4-20 X .438, SS, PKG 6 | 1 | 1 | 1 | 1 | 2 | 2 | 2 |
| 26 | 003660 | PLATE SHELF, 18, W/A | 1 | - | - | - | - | - | - |
| | 003662 | PLATE SHELF, 24, W/A | - | 1 | - | - | - | - | - |
| | 003663 | PLATE SHELF, 30, W/A | - | - | 1 | - | - | - | - |
| | 003664 | PLATE SHELF, 36, W/A | - | - | - | 1 | - | - | - |
| | 003665 | PLATE SHELF, 48, W/A | - | - | - | - | 1 | - | - |
| | 003667 | PLATE SHELF, 60, W/A | - | - | - | - | - | 1 | - |
| | 003668 | PLATE SHELF, 72, W/A | - | - | - | - | - | - | 1 |
| | 034423 | PLATE SHELF, 6" EXTENDED, WA, 18 | 1 | - | - | - | - | - | - |
| | 034424 | PLATE SHELF, 6" EXTENDED, WA, 24 | - | 1 | - | - | - | - | - |
| | 013144 | PLATE SHELF, 6" EXTENDED, WA, 30 | - | - | 1 | - | - | - | - |
| | 006053 | PLATE SHELF, 6" EXTENDED, WA, 36 | - | - | - | 1 | - | - | - |
| | 017899 | PLATE SHELF, 6" EXTENDED, WA, 48 | - | - | - | - | 1 | - | - |
| | 012814 | PLATE SHELF, 6" EXTENDED, WA, 60 | - | - | - | - | - | 1 | - |
| | 001868 | PLATE SHELF, 6" EXTENDED, WA, 72 | - | - | - | - | - | - | 1 |
| | 034427 | PLATE SHELF, 8" EXTENDED, WA, 18 | 1 | - | - | - | - | - | - |
| | 034426 | PLATE SHELF, 8" EXTENDED, WA, 24 | - | 1 | - | - | - | - | - |
| | 034425 | PLATE SHELF, 8" EXTENDED, WA, 30 | - | - | 1 | - | - | - | - |
| | 006069 | PLATE SHELF, 8" EXTENDED, WA, 36 | - | - | - | 1 | - | - | - |
| 021507 | PLATE SHELF, 8" EXTENDED, WA, 48 | - | - | - | - | 1 | - | - | |
| 026249 | PLATE SHELF, 8" EXTENDED, WA, 60 | - | - | - | - | - | 1 | - | |
| 021508 | PLATE SHELF, 8" EXTENDED, WA, 72 | - | - | - | - | - | - | 1 | |
| 26.1 | 012685 | NUT, LOCK, SERRATED FLANGE, 1/4-20, PKG 4 | 1 | 1 | 1 | 1 | 1 | 2 | 2 |
| 27 | 000501 | PANEL, SIDE, LH, RANGETOP | 1 | 1 | 1 | 1 | 1 | 1 | 1 |
| 28 | 000122 | PANEL, SIDE, RH, RANGETOP | 1 | 1 | 1 | 1 | 1 | 1 | 1 |
| 29 | 013303 | SERVICE, HB, 1/4-20 X .5, ZN, PKG 8 | 1 | 1 | 1 | 1 | 1 | 1 | 1 |
| 30 | AHRGC | REAR GAS CONNECTION, 1" NPT | 1 | 1 | 1 | 1 | 1 | 1 | 1 |



30" MANIFOLD SHOWN FOR REFERENCE

 HESTAN

**SERVICE, MANIFOLD, GAS
ASSY., CHARBROILER**

DESCRIPTION

DRAWING NO

A1

A1 - GAS MANIFOLD ASSEMBLY - CHARBROILER

| Item No. | Part No. | DESCRIPTION | HCH18 | HCH24 | HCH30 | HCH36 | HCH48 | HCH60 | HCH72 |
|----------|------------------------|--|-------|-------|-------|-------|-------|-------|-------|
| | | | QTY | QTY | QTY | QTY | QTY | QTY | QTY |
| 1 | 000836 | MANIFOLD, CHARBROILER, 18, W/A | 1 | - | - | - | - | - | - |
| | 000962 | MANIFOLD, CHARBROILER, 24, W/A | - | 1 | - | - | - | - | - |
| | 000957 | MANIFOLD, CHARBROILER, 30, W/A | - | - | 1 | - | - | - | - |
| | 000370 | MANIFOLD, CHARBROILER, 36, W/A | - | - | - | 1 | - | - | - |
| | 002439 | MANIFOLD, CHARBROILER, 48, W/A | - | - | - | - | 1 | - | - |
| | 004586 | MANIFOLD, CHARBROILER, 60, W/A | - | - | - | - | - | 1 | - |
| | 002003 | MANIFOLD, CHARBROILER, 72, W/A | - | - | - | - | - | - | 1 |
| 2 | 015662 | KIT, VALVE, ON-OFF, FLANGE-MOUNT, A23-F | 2 | 2 | 3 | 3 | 4 | 5 | 6 |
| 2.1 | 015668 | VALVE BODY, ON-OFF, FLANGE-MOUNT, A23-F | 2 | 2 | 3 | 3 | 4 | 5 | 6 |
| 2.2 | 004643 | FLANGED NIPPLE, 1/4 NPT | 2 | 2 | 3 | 3 | 4 | 5 | 6 |
| 2.3 | 012750 | SERVICE, SHCS, 10-24 X .500, SS, PKG 6 | 1 | 1 | 1 | 1 | 2 | 2 | 2 |
| 2.4 | 014103 | SERVICE, O-RING, FLANGED NIPPLE, PKG 6 | 1 | 1 | 1 | 1 | 1 | 1 | 1 |
| 3 | 000113 | VALVE, PILOT, 1/8NPT X 3/16 COMP., ELBOW | 2 | 2 | 3 | 3 | 4 | 5 | 6 |
| 4 | 002321 | ELBOW, ADAPTER, 1/4 NPT FEMALE X 3/8 CC | 2 | 2 | 3 | 3 | 4 | 5 | 6 |
| 5 | 001413 | BRACKET, VALVE ANTI-ROTATION, STD. | 2 | 2 | 3 | 3 | 4 | 5 | 6 |
| 6 | 012689 | SERVICE, SMS, #10 X .5, PH, PAN, PKG 3 | 1 | 1 | 1 | 1 | 2 | 2 | 2 |
| 7 | 012679 | SERVICE, WSH, FLAT, 3/8 SAE, PKG 4 | 1 | 1 | 1 | 1 | 1 | 1 | 1 |
| 8 | 012681 | SERVICE, NUT, 3/8-16 X .25, PKG 4 | 1 | 1 | 1 | 1 | 1 | 1 | 1 |
| 9 | 000258 | PLUG, SQUARE SOCKET, 1" NPT | 1 | 1 | 1 | 1 | 1 | 1 | 1 |
| 10 | 000254 | UNION, 1.25", NPT - 5P594 | 1 | 1 | 1 | 1 | 1 | 1 | 1 |
| 11 | AHCCL | CAP, MANIFOLD, LEFT, ASSY. | 1 | 1 | 1 | 1 | 1 | 1 | 1 |
| 12 | AHCCR | CAP, MANIFOLD, RIGHT, ASSY. | 1 | 1 | 1 | 1 | 1 | 1 | 1 |
| 13 | 005682 | HOSE, FLEX, 3/8 OD, 12", F-F, NUT/FERRULE | 2 | 2 | 3 | 3 | 4 | 5 | 6 |
| 14 | 005687 | HOSE, FLEX, 3/16 OD, 12", F-F, NUT/FERRULE | 2 | 2 | 3 | 3 | 4 | 5 | 6 |
| 15 | 000360 | PLUG, HEX SOCKET, 1/8" NPT | 1 | 1 | 1 | 1 | 1 | 1 | 1 |