

REV	DATE	BY	DESCRIPTION	ECO #
C	10-15-2021	MAS	REMOVE (I) 39179, ADD (II) 6004007	

1	62	10964	DECAL, QR CODE HTM
1	61	11024	DECAL, EVO TOUCH
1	60*	11316	WIRE KIT, SWG 20 120V 4.3" CLCD
4	59	11349	NUT 6-32 EXT TOOTH LOCK ZPS
1	58*	11403	MANUAL, OWNERS SWG 20/25 4.3"
4	57	12229	WASHER FLT .500x1.250x.078 ZPS
2	56	13103	SCREW MCH 4-40x0.750 RHSL
1	55	13250	CORD GRIP HEYCO 1557 RDD20I
2	54	13919	WASHER LOCK HEL SPR #4 ZP
2	53	14514	NUT 1/4-20 NYLON INSERT ZPS
4	52	14571	NUT 3/8-16 ZPS
3	51	15131	SCREW SET 1/4-20x0.250
2	50	15339	SCREW MACHINE 10-24 X .500 PHPH
1	49	15547	WASHER FLT .531x1.000x.063 ZPS
4	48	28010	BUMPON BLACK .81"x.30"
2	47	30910	WASHER LOCK HEL SPR 5/16 ZP
REF	46	31823	SWITCH MICRO SMALL SEMI-HOOK
2	45	32228	WASHER LOCK HEL SPR #10 ZP
1	44	33605	DECAL, UNPLUG MACHINE
2	43	34592	SCREW MCH 8-32x0.625 PHPH
1	42	35691	GROMMET .375IDx.625 GRV
REF	41	39768	CORDSET 120v 14/3 STOW 5-15P
1	40	6000101	ASSEMBLY, PLATEN 16X20 120V D
1	39	6004007	ASSY. STRAIN GAUGE
1	38	6010063	PAD 16x20x1/2 MED BLACK MOLDED
REF	37	62731	RELAY SS 25A 3-32VDC INPUT
1	36*	63317	BOX SWINGMAN 20P
1	35*	63318	BOX SWINGMAN 20P LINER
2	34	63320	BEARING WSHR .500x0.937x.031
1	33	63622	BEARING THRUST .500x0.937x.078
16	32	64203	WASHER FLT .515x0.875x.032 SS
1	31	6505026	COVER, STRAIN GAUGE
2	30	68055	BOLT 5/16-18x0.875

2	75	10909	SCREW MCH M3-0.5X3 PHP ZPS
1	74	0101012	SWINGMAN 20 MOUNTING BOARD
6"	73	10012	TRIM-LOK 150 B2 X 3/16 ALUM
1	72	10129	DECAL SWINGMAN 20 LOGO
1	71	10151	KNOB 1/2-20 KNURLED
1	70	10347	CIRCUIT BKR 1-POLE PTR 15A ST
2	69	10486	O RING 2.7620Dx2.484x.139
1	68	10664	DECAL MADE IN USA
4	67	10884	BOLT 3/8-16X2.000
REF	66	10903	POWER SUPPLY 15W 5VDC 3A
1	65	10910	I/O BOARD ANTRONICS
4	64	10914	SPACER .140 X .250 X .125 NYLON
REF	63*	10917	CABLE, CAT5E ETHERNET FLAT, 1 FT
QTY.	ITEM #	PART #	TITLE

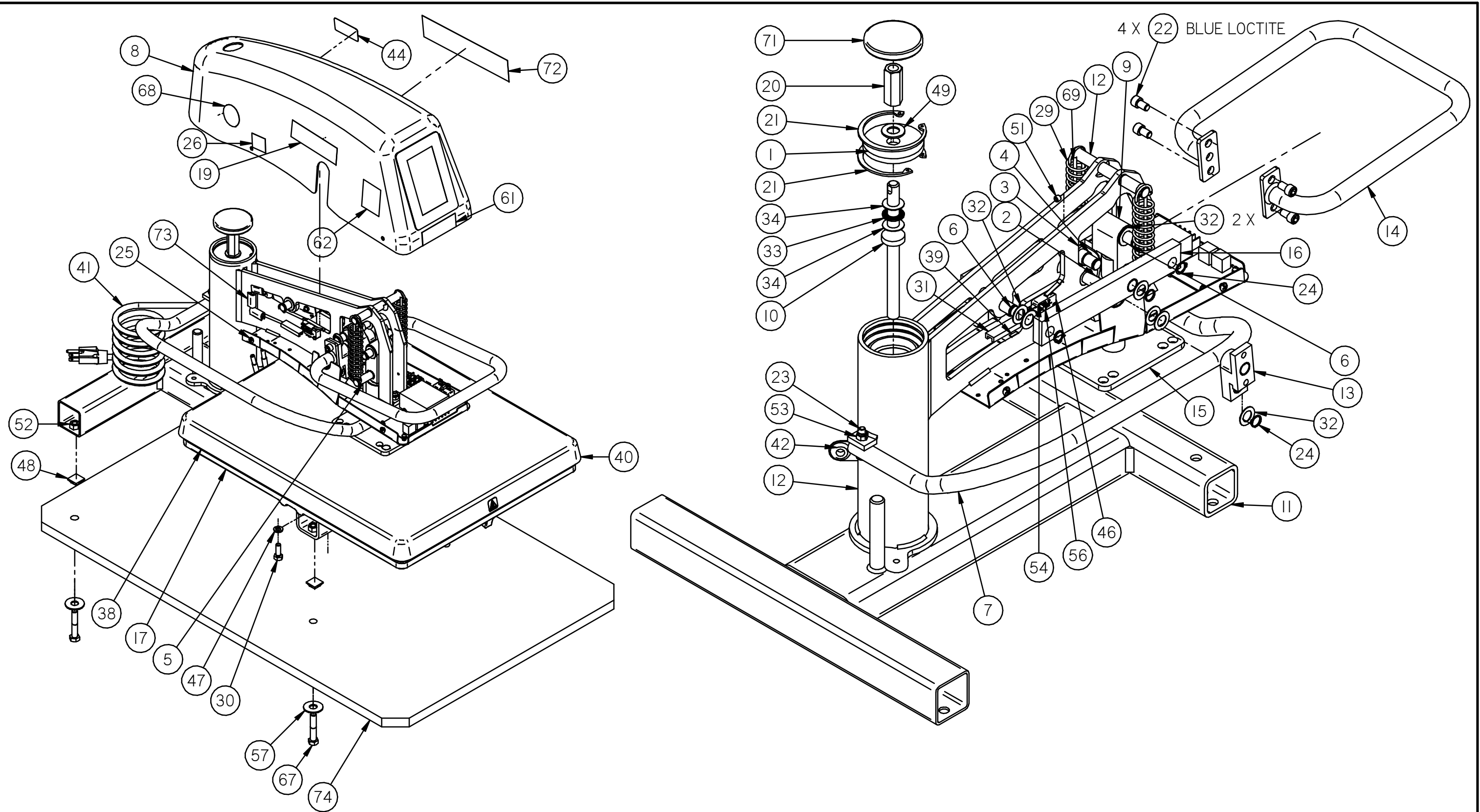
2	29	68918	SPRING EXT 1.0000DX3.000X.105
2	28	70129	NUT 8-32 NYLON INSERT ZPS
1	27*	70268	DECAL HIX I.D. 3"X3" SILVER
1	26	70362	DECAL, CERTIFIED GREEN
4	25	70630	SCREW MCH 10-24x0.375 PHPH
10	24	70702	RETAINING RING EXT 0.500 2HOLE
2	23	70704	SCREW FHSKT 1/4-20x1.500
4	22	70708	SCREW CPSKT 5/16-24x0.500
2	21	70728	RETAINING RING INT 2.625
1	20	70729	NUT COUPLING 1/2-20 x 1-3/4
1	19	70732	DECAL HIX LOGO 4"x1"
REF	18	72223	TERM BD 601-2-KT37, 38,39
1	17	82768	M-CASTING 16x20 LOWER F
2	16	9240060	ASSEMBLY, LONG LINK
1	15	9240320	WELDMENT, PLATEN ADAPTER
1	14	9240420	WELDMENT, BAIL HANDLE
2	13	9240430	ASSEMBLY, DRIVE LINK
1	12	9240921	SWG 20 MAIN ARM WLD CURVED 4.3"
1	11	9240940	SWINGMAN 20 FRAME WELDMENT
1	10	9240960	WELDMENT HEIGHT ADJUSTMENT
1	9	9241020	LINK, TOP
1	8	9241131	ASSEMBLY, SWINGMAN HOUSING 4.3"
1	7	9242304	HANDLE, SWG20 RETURN
2	6	9242314	PIN, LINK SHORT
1	5	9242315	PIN, MAIN LINK
2	4	9242320	SWG20 C LINK PIN
1	3	9242421	SWG20 C LINK
1	2	9242430	PIN, HANDLE LINK
1	1	9243009	THRUST PLATE .563 X 2.620 X .25
QTY.	ITEM #	PART #	TITLE

NOTES:

1. REFERENCE MODEL #9240517.
2. REFERENCE SCHEMATIC 9236004.

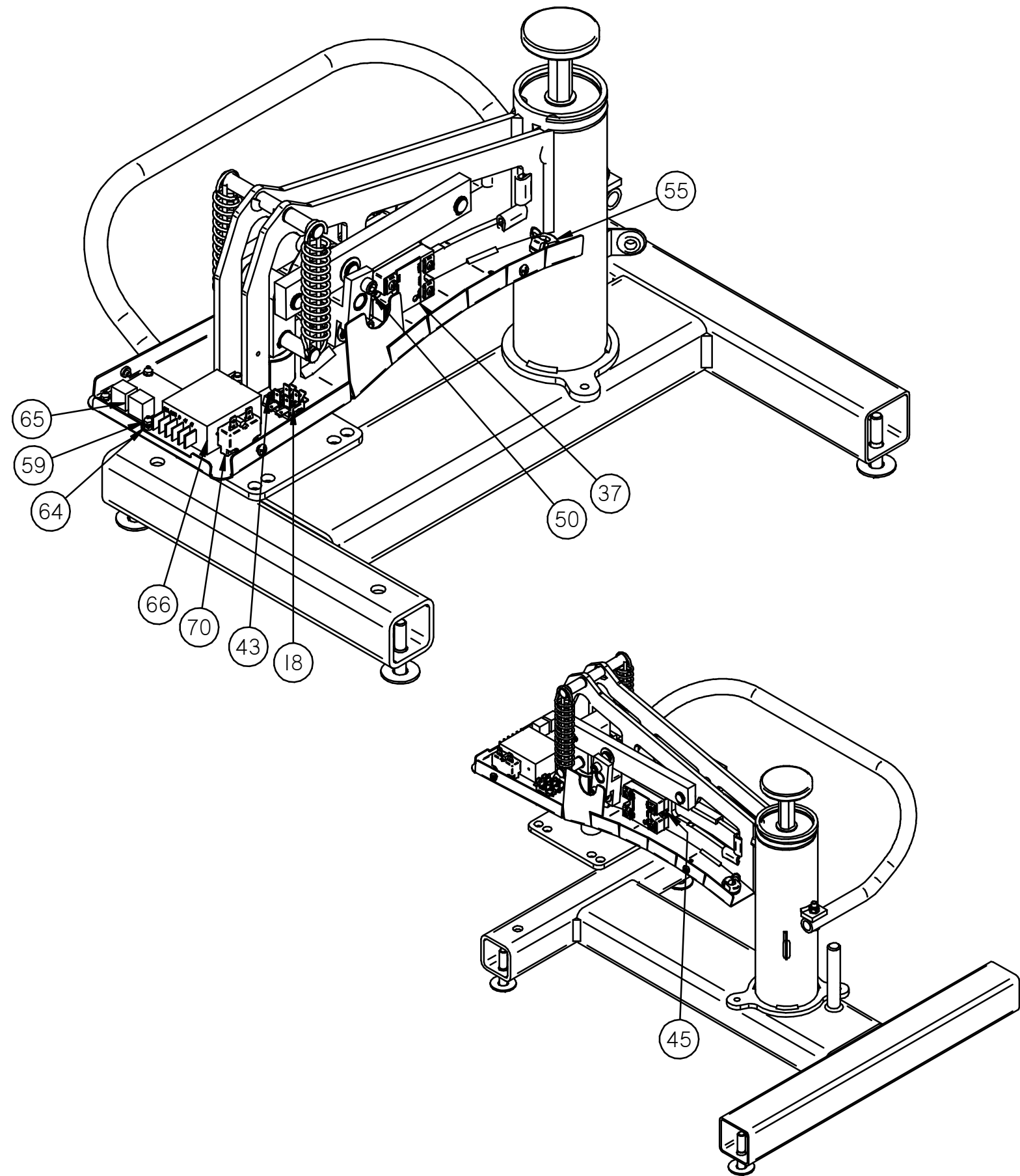
11293  
SWG 20 120V 4.3" CLCD

<b>HIX Corporation</b> 1201 E 27th Terrace, Pittsburg, KS 66762 Phone (620) 231-8568 Fax (620) 231-1598 Email: mail@hixcorp.com www.hixcorp.com <small>This document and the information contained herein is the sole property of HIX Corporation. It will be held confidentially and may not be disclosed to third parties for any reason without prior written consent of HIX Corporation (Copyright 2005)</small>		TITLE SWINGMAN 20 120V 4.3" CLCD	
		DWG NO 9240518	REV C
Tolerance Unless Noted 0 +/- .060 .00 +/- .030 .000 +/- .010 FRACTION +/- 1/32 ANGLES +/- 1 DEGREE		Drawn mschultz Checked Date 2/12/2021	Project SWINGMAN
DO NOT SCALE		SIZE B	SHEET 1 OF 3



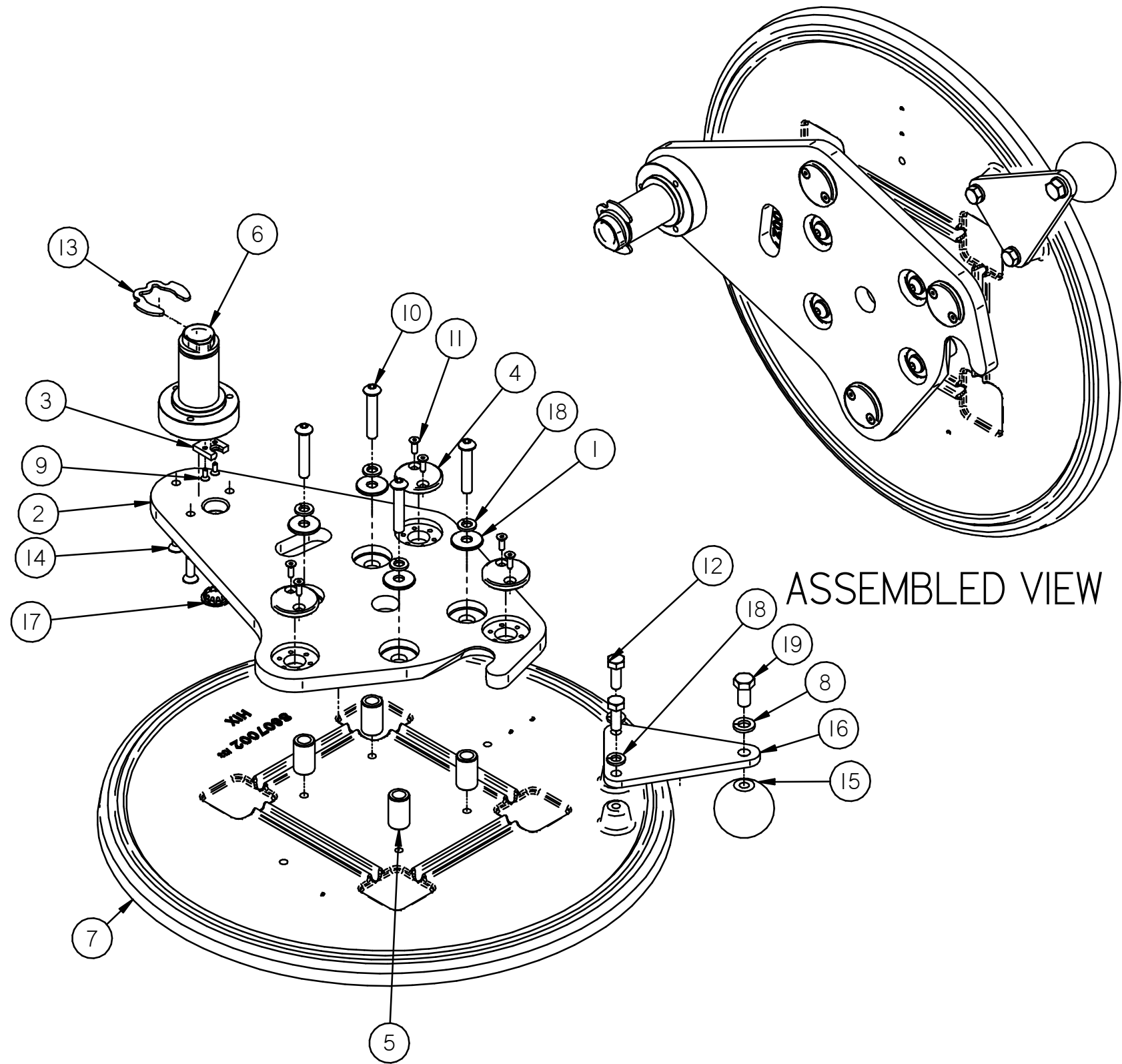
11293 SWG 20 120V 4.3" CLCD	<b>HIX Corporation</b> 1201 E 27th Terrace, Pittsburg, KS 66762 Phone (620) 231-8568 Fax (620) 231-1598 Email: mail@hixcorp.com www.hixcorp.com <small>This document and the information contained herein is the sole property of HIX Corporation. It will be held confidentially and may not be disclosed to third parties for any reason without prior written consent of HIX Corporation (Copyright 2005)</small>		TITLE SWINGMAN 20 120V 4.3" CLCD	
	Tolerance Unless Noted 0 +/- .060 .00 +/- .030 .000 +/- .010 FRACTION +/- 1/32 ANGLES +/- 1 DEGREE		Drawn mrschultz	Date 2/12/2021
	DWG NO 9240518		REV C	
	Project SWINGMAN		SIZE B	SHEET 2 OF 3

DO NOT SCALE



11293 SWG 20 120V 4.3" CLCD	<b>HIX Corporation</b>		TITLE SWINGMAN 20 120V 4.3" CLCD	
	1201 E 27th Terrace, Pittsburg, KS 66762 Phone (620) 231-8568 Fax (620) 231-1598 Email: mail@hixcorp.com www.hixcorp.com <small>This document and the information contained herein is the sole property of HIX Corporation. It will be held confidentially and may not be disclosed to third parties for any reason without prior written consent of HIX Corporation (Copyright 2005)</small>		DWG NO 9240518	REV C
	Tolerance Unless Noted 0 +/- .060 .00 +/- .030 .000 +/- .010 FRACTION +/- 1/32 ANGLES +/- 1 DEGREE		Drawn mschultz Checked Date	Date 2/12/2021 Date
	DO NOT SCALE		Project SWINGMAN	
		SIZE B	SHEET 3 OF 3	

REV	DATE	BY	DESCRIPTION	ECO #
A	1-10-2017	MAS	DRAWING CREATED	
B	9-5-2017	MAS	ADD QTY. 1 40980	
C	3-4-2020	MAS	REMOVE (1) 8621029, ADD (1) 8621200	



ASSEMBLED VIEW

1	19	10843	BOLT 3/8-16X0.750
6	18	30910	WASHER LOCK HEL SPR 5/16 ZP
1	17	40980	PLUG HOLE 3/4" STL NI PLATED
1	16	61611	DP HANDLE BRACKET
1	15	62561	KNOB PHENOLIC CL 852-PB
3	14	65811	SCREW FHSKT 1/4-20 X .875 SS
1	13	66761	RETAINING RING EXT 1.250 PO
2	12	68055	BOLT 5/16-18x0.875
6	11	71039	SCREW FHSKT 8-32X0.500
4	10	71040	SCREW BHSKT 5/16-18 X 1.75
2	9	71070	SCREW FHSKT 6-32 X 0.375
1	8	79418	WASHER LOCK HEL SPR 3/8 ZP
1	7	8607003	CASTING DP 18" ROUND
1	6	8621027	LOWER PLATEN PIVOT SHAFT LV
4	5	8621028	LOWER PLATEN SPACER LV
3	4	8621033	PRESSURE PAD SCREW LV
1	3	8621061	LOWER PLATEN WIRE CLAMP LV
1	2	8621200	LOWER PIVOT ARM LV RP
4	1	9862318	DXM LOWER PLATEN WASHER LV
QTY.	ITEM #	PART #	Title

NOTES:  
1.

**HIX Corporation**

1201 E 27th Terrace, Pittsburg, KS 66762  
 Phone (620) 231-8568 Fax (620) 231-1598  
 Email: mail@hixcorp.com www.hixcorp.com  
 This document and the information contained herein is the sole property of HIX Corporation.  
 It will be held confidentially and may not be disclosed to third parties for any reason without  
 prior written consent of HIX Corporation (Copyright 2005)

Tolerance Unless Noted	Drawn	Date
0 +/- .060	MSCHULTZ	1/10/2017
.00 +/- .030	Checked	Date
.000 +/- .010		
FRACTION +/- 1/32		
ANGLES +/- 1 DEGREE		

TITLE ASSY. DP LOWER PLATEN 18 IN. DIA. NO HEAT LV	
DWG NO 8620081	REV C
Project DX SERIES	
SIZE B	SHEET 1 OF 1

DO NOT SCALE

				10	72	19186	NUT 10-24 NYLON INSERT LOCK ZPS					
				8	71	21482	SCREW TAP 8x0.500 PHPH					
				2	70	24074	WASHER FLT .219x0.500x.047 ZPS					
				4	69	24732	WASHER FLT .344X0.688X.063 ZPS					
				1	68	2507074	GENERIC HTM HANDLE	1	34*	71145	FILTER AIR 1/4 NPT 1 OZ BOWL	
				4	67	25720	WASHER FLT .406X1.500X.120 ZPS	REF	33	71153	REGULATOR 1/8NPT R261	
				1	66	26840	HANDLE GRIP 3/4" FOAM BLK	1	32	71161	FTG BULKHD 1/4NPT BRS	
2	103	10909	SCREW MCH M3-0.5X3 PHP ZPS	2	65	29904	WASHER SHIM .0478x0.625x1.000	1	31*	71331	FTG NPL 1/4 NPT X CLS STL	
1	102	10130	DECAL N-880 SILVER/RED	4	64	30910	WASHER LOCK HEL SPR 5/16 ZP	2	30	71498	BOLT 5/16-18x0.750 G8	
1	101	10348	CIRCUIT BKR 1-POLE PTR 20A ST	1	63	30945	BUSHING 3/8X1/2X1/4 SSI216-4	REF	29	72223	TERM BD 601-2-KT37, 38,39	
1	100	10375	FTG NPL 1/8NPTxCLS NY HEX	1	62	31453	FOOT RUBBER 0.75x1.50x0.25	1	28	79426	WASHER LOCK HEL SPR 1/4 ZP	
1	99	10397	VALVE QUICK EXHAUST	REF	61	31823	SWITCH MICRO SMALL SEMI-HOOK	8	27	82368	NUT PUSH 5/8 AU-VE-CO 14174	
1	98	10553	BOLT SHOULDER 1/4x3/4x10-24	1	60	33605	DECAL, UNPLUG MACHINE	1	26	8400120	ASSY., 680 / 880 HANDLE	
1	97	10561	BOLT SHOULDER 1/4x1-1/4x10-24	2	59	34118	RETAINING RING EXT 0.750 E	1	25	8400133	ASSEMBLY, N-880 LOWER FRAME	
1	96	10664	DECAL MADE IN USA	REF	58	34274	VALVE POP-OFF 90PSI 1/8 NPT	1	24	8400139	BRACKET, LIMIT SWITCH 4.3" CLCD	
4	95	10769	BOLT 5/16-18x1.000	2	57	36951	NUT 4-40 NYLON INSERT ZPS	1	23	8400140	ASSY., 680 / 880 HANDLE LINK	
1	94	10775	FITTING, BRANCH T 1/4" NPT - 1/4"	2	56	37125	SCREW MCH 4-40X0.625 RHPH	1	22	8400224	ASSY., N880 BLADDER / PLATEN	
REF	93	10903	POWER SUPPLY 15W 5VDC 3A	REF	55	39768	CORDSET 120v 14/3 STOW 5-15P	1	21*	8400712	N680 / N880 PACKAGING	
1	92	10910	I/O BOARD ANTRONICS	2	54	50036	SCREW CPSKT 5/16-18 X 4.5 GRADE 8	1	20	8401021	TUBE 0.2500Dx0.170ID 7	
1	91	10911	CONTROL DISPLAY BD 4.3" COLOR	2	53	50096	SCREW CPSKT 3/8-16 X .625	1	19	8401022	TUBE 0.2500D X 0.170 ID 5.5	
9	90	10914	SPACER .140 X .250 X .125 NYLON	1	52	50189	WASHER LOCK INT TH #10 SS	1	18	8401024	TUBE 1.250 OD X 0.167 ID 17	
1	89	10964	DECAL, QR CODE HTM	1	51	50547	SWITCH PB BLK INC	1	17	8401025	TUBE 0.2500D X 0.17ID X 18.75	
1	88	11027	DECAL, EVO PRO AIR AUTOMATIC	2	50	59816	SCREW TAP 14x1.250 PHPH	1	16	8401026	TUBE 0.2500Dx0.170ID 12.00	
1	87*	11156	WIRE KIT N-880 120V 16X20	1	49	59886	SCREW TAP 10-32x0.500 WHHX	1	15	8402022	ASSY., 680 / 880 MAIN ARM	
1	86*	11208	MANUAL, N-680 / N-880 4.3" CLCD	1	48	6000104	ASSY PLATEN 16X20 120V DIG 4.3"	1	14	8404117	ENCLOSURE FRONT 4.3" CLCD N-880	
1	85	11314	DECAL, SWG 20 4.3" COLOR LCD	1	47	6010063	PAD 16x20x1/2 MED BLACK MOLDED	1	13	8404118	BACK PANEL, N-880 4.3" CLCD	
9	84	11349	NUT 6-32 EXT TOOTH LOCK ZPS	3	46	62448	WIRE CABLE CLIP ADHESIVE BACK	1	12	8405005	ASSY., 680 / 880 DBL LINK WELD	
4	83*	11544	CABLE TIE CT4S-M 3-3/4	REF	45	62731	RELAY SS 25A 3-32VDC INPUT	2	11	8405006	840 LINK LOWER	
1	82	11551	CABLE TIE MNT-150 7-31/32	REF	44	65300	AIR GAUGE 0-100PSI 1-1/2	2	10	8405014	SPACER LINK	
1	81	13250	CORD GRIP HEYCO 1557 RDD201	REF	43	65897	RELAY SS 50A 3-32VDC INPUT	1	9	8405015	PIN .313 X 2.406	
4	80	14621	NUT 6-32 ZPS	1	42	70010	880 D REGULATOR ASSEMBLY	2	8	8405016	PIN .313 X 2.406	
2	79	14738	NUT PUSH 5/16	1	41	70128	WASHER FLT .125x0.313x.025 ZPS	2	7	8405018	PIN MIDDLE PIVOT LINK	
1	78	14910	DECAL HOT SURFACE SYMBOL	1	40	70268	DECAL HIX I.D. 3" X 3" SILVER	1	6	8405050	ARM SUPPORT LEVER	
1	77	14931	SPRING EXT 1/2"ODx2.5"x.041"	1	39	70362	DECAL, CERTIFIED GREEN	1	5	8405051	CYLINDER MOUNT STUD	
2	76	15081	RIVET POP 1/8 .063-.125 STL	REF	38	70515	VALVE SOLENOID VX3130-120V	2	4	8405058	TUBE STOP	
8	75	15297	SCREW MCH 6-32x0.500 PHPH	REF	37	70517	FTG IT TEE BRCH 1/4Tx1/8FPT	2	3	8405066	SPACER, .328 X .75 X 3.837 ACETAL	
14	74	15339	SCREW MACHINE 10-24 X .500 PHPH	1	36	70726	RETAINING RING EXT 0.375 E	1	2	84798	RESISTOR 5K, 5 WATT OHMITE	
4	73	18406	FOOT RUBBER 5/8"x1/2"	2	35	70732	DECAL HIX LOGO 4"x1"	REF	1	90522	FTG IT EL MALE 1/4Tx1/8NPT	
QTY.	ITEM #	PART #	TITLE	QTY.	ITEM #	PART #	TITLE	QTY.	ITEM #	PART #	TITLE	

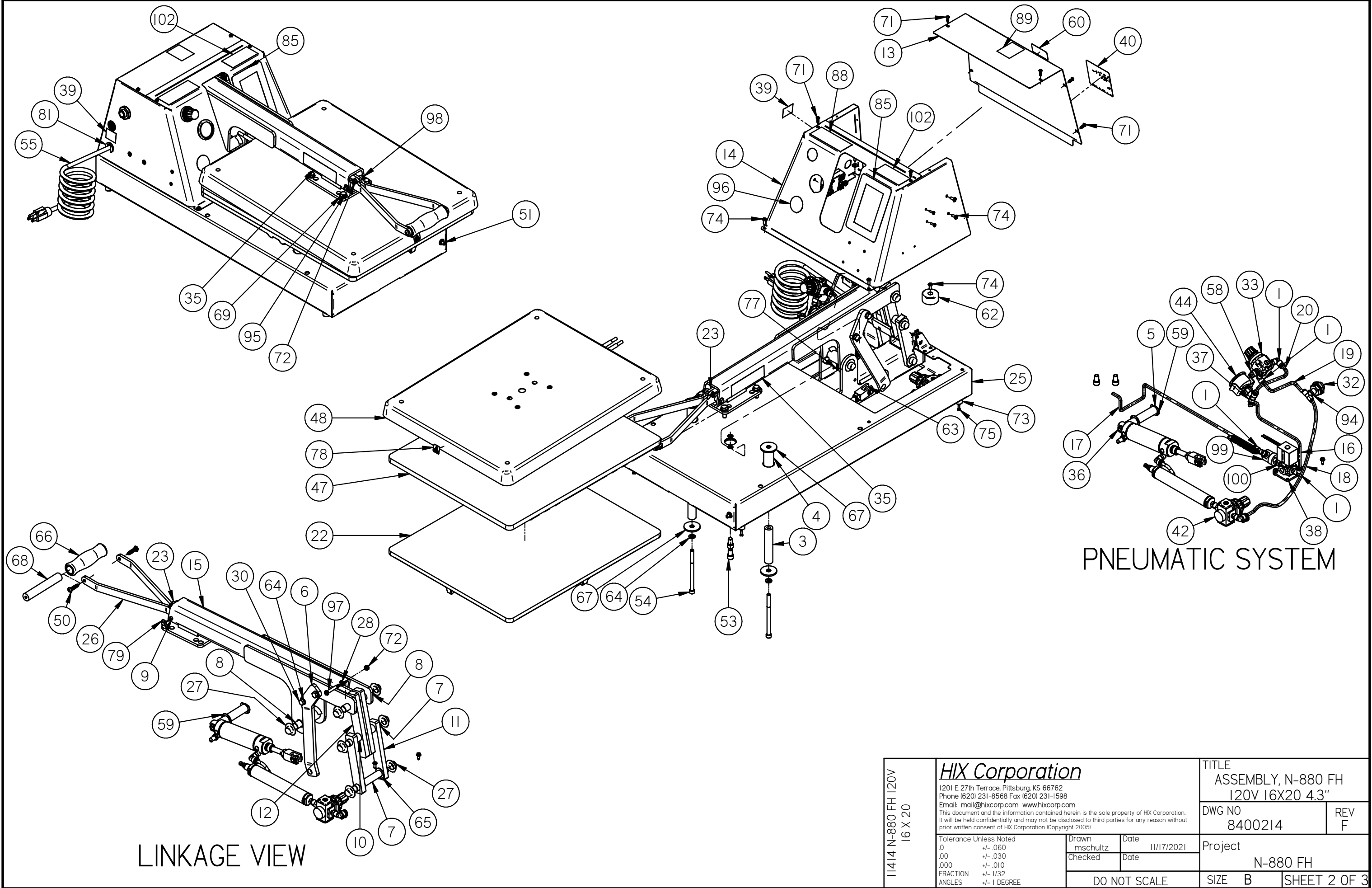
NOTES:

1. REFERENCE MODEL 8400200.
2. REFERENCE SCHEMATIC 8806009.
3. 71145 AND 71331 INSTALLED BY CUSTOMER.

REV	DATE	BY	DESCRIPTION	ECO #
F	5-18-2023	MAS	REMOVE (2) 10603, (2) 8405056, ADD (2) 50036, (2) 8405066	

11414 N-880 FH 120V 16 X 20

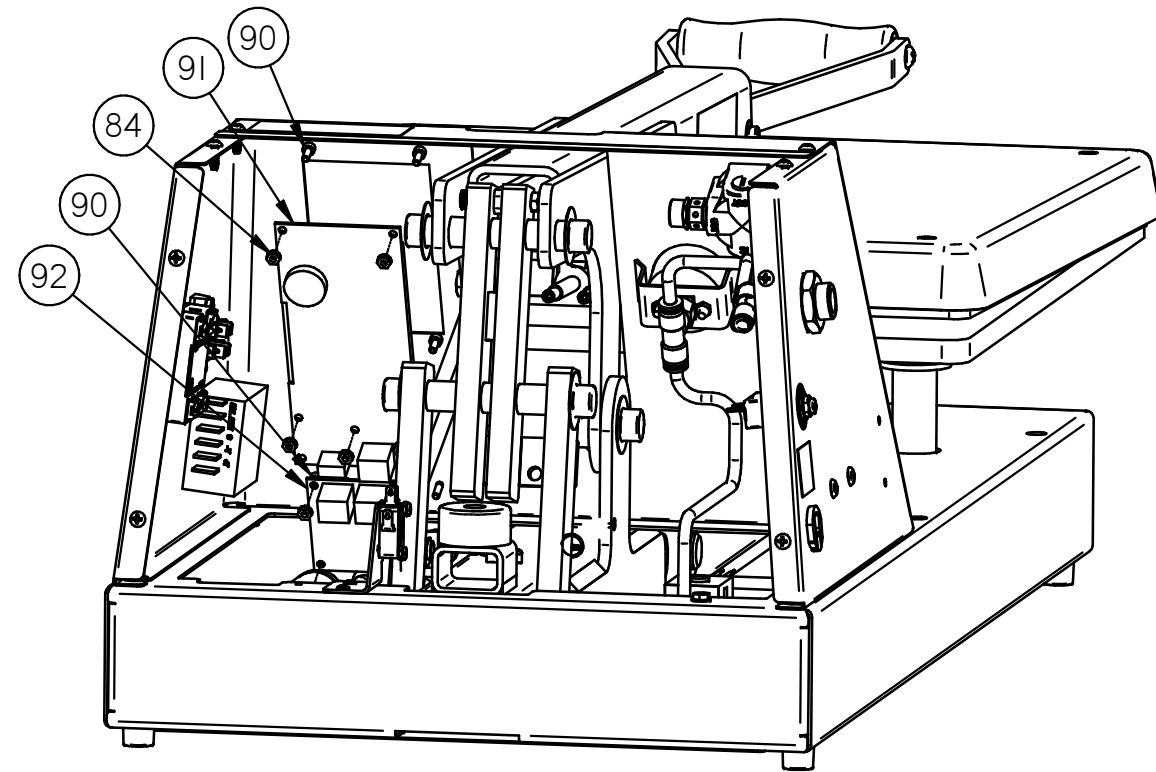
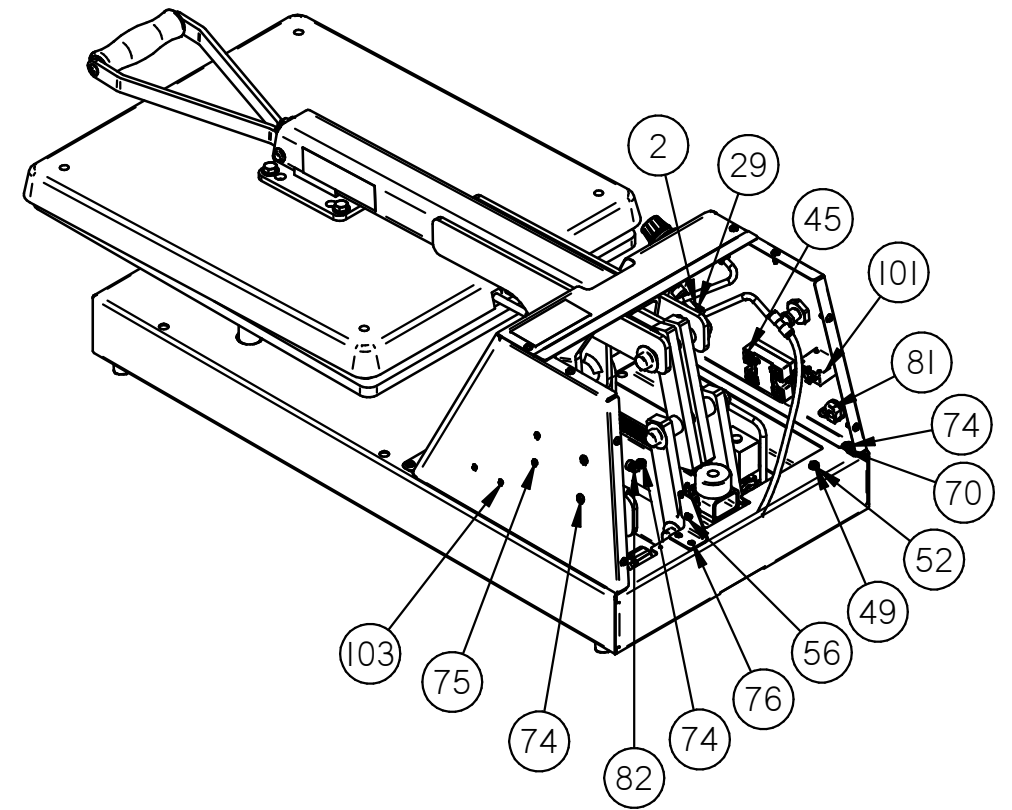
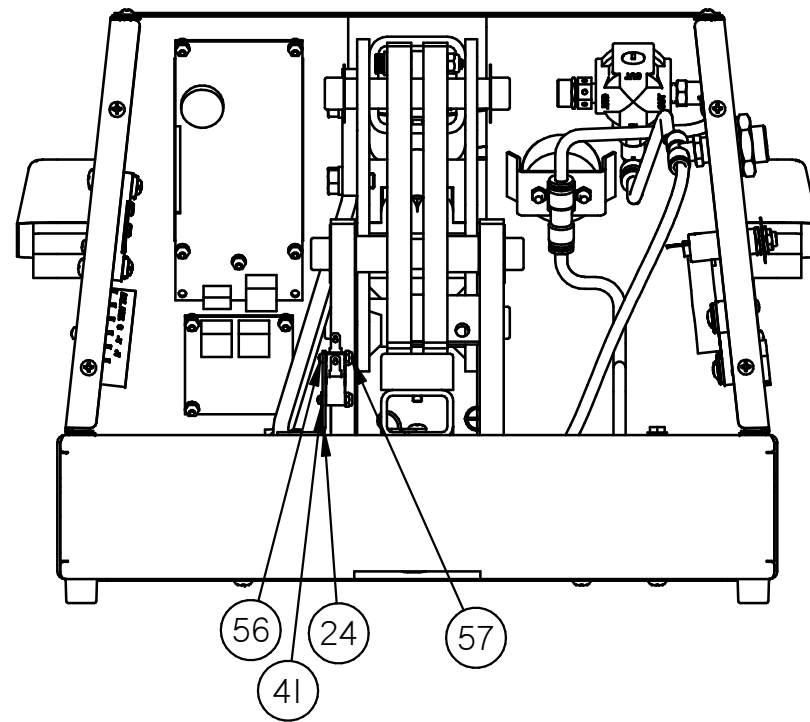
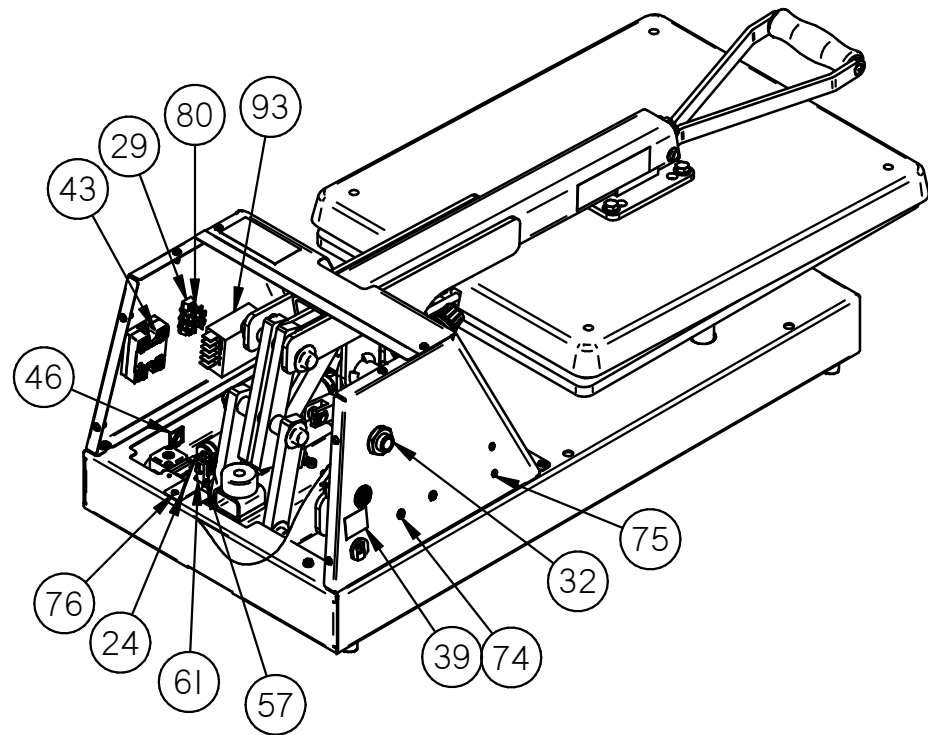
<p><b>HIX Corporation</b>          1201 E 27th Terrace, Pittsburg, KS 66762          Phone (620) 231-8568 Fax (620) 231-1598          Email: mail@hixcorp.com www.hixcorp.com  <small>This document and the information contained herein is the sole property of HIX Corporation. It will be held confidentially and may not be disclosed to third parties for any reason without prior written consent of HIX Corporation (Copyright 2005)</small></p>		TITLE ASSEMBLY, N-880 FH 120V 16X20 4.3"	
		DWG NO 8400214	REV F
Tolerance Unless Noted 0 +/- .060 .00 +/- .030 .000 +/- .010 FRACTION +/- 1/32 ANGLES +/- 1 DEGREE		Drawn mschultz Checked Date 11/17/2021	Project N-880 FH
DO NOT SCALE		SIZE B	SHEET 1 OF 3



LINKAGE VIEW

PNEUMATIC SYSTEM

11414 N-880 FH 120V 16 X 20	<b>HIX Corporation</b>		TITLE ASSEMBLY, N-880 FH 120V 16X20 4.3"	
	1201 E 27th Terrace, Pittsburg, KS 66762 Phone (620) 231-8568 Fax (620) 231-1598 Email: mail@hixcorp.com www.hixcorp.com		DWG NO 8400214	
	This document and the information contained herein is the sole property of HIX Corporation. It will be held confidentially and may not be disclosed to third parties for any reason without prior written consent of HIX Corporation (Copyright 2005)		REV F	
	Tolerance Unless Noted 0 +/- .060 .00 +/- .030 .000 +/- .010 FRACTION +/- 1/32 ANGLES +/- 1 DEGREE		Drawn mschultz	Date 11/17/2021
		Checked	Date	SIZE B SHEET 2 OF 3
DO NOT SCALE				



11414 N-880 FH 120V 16 X 20	<b>HIX Corporation</b>		TITLE ASSEMBLY, N-880 FH 120V 16X20 4.3"	
	1201 E 27th Terrace, Pittsburg, KS 66762 Phone (620) 231-8568 Fax (620) 231-1598 Email: mail@hixcorp.com www.hixcorp.com <small>This document and the information contained herein is the sole property of HIX Corporation. It will be held confidentially and may not be disclosed to third parties for any reason without prior written consent of HIX Corporation (Copyright 2005)</small>		DWG NO 8400214	REV F
	Tolerance Unless Noted .0 +/- .060 .00 +/- .030 .000 +/- .010 FRACTION +/- 1/32 ANGLES +/- 1 DEGREE		Drawn mschultz Checked Date Date 11/17/2021	Project N-880 FH
	DO NOT SCALE		SIZE B	SHEET 3 OF 3

QTY.	ITEM	PART #	TITLE	QTY.	ITEM	PART #	TITLE	QTY.	ITEM	PART #	TITLE
2	93	10909	SCREW MCH M3-0.5X3 PHP ZPS	2	60	16683	WASHER FLT .375x0.875x.078 ZPS				
1	92	0100001	M-HT400 ADJUSTMENT BLOCK	2	59	16774	WASHER FLT .281 X 0.625 X .063 ZPS				
REF	91	0101010	M-400/600/DM MOUNTING BOARD	1	58	17301	GROMMET .563IDx.750 GRVx.063				
2"	90	10012	TRIM-LOK 150 B2 X 3/16 ALUM	4	57	20214	NUT PUSH 1/2 PW500015 EZ				
1	89	10134	DECAL S-650	8	56	21482	SCREW TAP 8x0.500 PHPH				
1	88	10151	KNOB 1/2-20 KNURLED	1	55	21989	WASHER LOCK INT TH #14				
1	87	10348	CIRCUIT BKR 1-POLE PTR 20A ST	4	54	24732	WASHER FLT .344X0.688X.063 ZPS	1	27	6105005	HT400 PRESSURE ADJ ROD
1	86	10664	DECAL MADE IN USA	1	53	2507074	GENERIC HTM HANDLE	1	26	6105022	HT450/650 PIN LOWER LINK
4	85	10769	BOLT 5/16-18x1.000	3	52	25151	NUT 1/2-20 JAM	2	25	6105036	LINK ASSEMBLY ELECTRIC BLUE
2	84	10793	BOLT 5/16-18x1.750	1	51	26840	HANDLE GRIP 3/4" FOAM BLK	REF	24	62731	RELAY SS 25A 3-32VDC INPUT
4	83	10868	BOLT 3/8-16X1.250	4	50	28010	BUMPON BLACK .81"x.30"	2	23	63428	STUD BALL FOR GAS SPRINGS
REF	82	10903	POWER SUPPLY 15W 5VDC 3A	4	49	30910	WASHER LOCK HEL SPR 5/16 ZP	12	22	64203	WASHER FLT .515x0.875x.032 SS
1	81	10910	I/O BOARD ANTRONICS	2	48	30929	BOLT SHOULDER 3/8x1/2x5/16-18	1	21	6500370	S-650 LATCH ASSEMBLY
1	80	10911	CONTROL DISPLAY BD 4.3" COLOR LONG	REF	47	31823	SWITCH MICRO SMALL SEMI-HOOK	1	20	6500380	450/650 HANDLE ELECTRIC BLUE
6	79	10914	SPACER .140 X .250 X .125 NYLON	1	46	33605	DECAL, UNPLUG MACHINE	1	19	6501141	650 LINK PIN MACHINED
1	78	10916	DECAL, 4.3" COLOR LCD DISPLAY	2	45	35408	BUMPER 1/8X1/2 SQ BLK RUBBER	2	18	6501144	P-650 TUBE DAMPENING 2
1	77*	10964	DECAL, QR CODE HTM	4	44	36587	SCREW MCH 6-32X0.250 PHPH	1	17	6503021	O-CVR HANDLE LONG 450/650
1	76	11025	DECAL, EVO PRO	2	43	36846	SCREW FHSKT 5/16-18x0.625	1	16	6505015	650 SPRING EXTENDER LINK
1	75*	11120	MANUAL 400/600, S-450/S-650 4.3" CLCD	1	42	37001	PIN DOWEL 0.125x1.250	1	15	6505020	M-STRAIN GAUGE COVER
1	74*	11123	WIRE KIT S-450/S-650 120V 4.3" CLCD	REF	41	39768	CORDSET 120v 14/3 STOW 5-15P	2	14	65986	BOLT 1/4-20 X 0.625
9	73	11349	NUT 6-32 EXT TOOTH LOCK ZPS SMALL	2	40	50181	SCREW TAP 1/4-20x0.500 WHHX	4	13	68330	WASHER LOCK #6 SPLIT ZPS
4	72	12229	WASHER FLT .500x1.250x.078 ZPS	2	39	59816	SCREW TAP 14x1.250 PHPH	4	12	70009	WASHER FLT .406x0.813x.080 ZPS
12	71	12378	WASHER SPG STL .375x.750x.028	4	38	59886	SCREW TAP 10-32x0.500 WHHX	1	11	70268	DECAL HIX I.D. 3" X 3" SILVER
2	70	13103	SCREW MCH 4-40x0.750 RHSL	1	37	6000104	ASSY PLATEN 16X20 120V DIG 4.3" CLCD	1	10	70362	DECAL, CERTIFIED GREEN
1	69	13250	CORD GRIP HEYCO 1557 RDD201	1	36	6000131	400 MAIN ARM ELECTRIC BLUE	4	9	70693	RETAINING RING EXT 0.500 E
2	68	13919	WASHER LOCK HEL SPR #4 ZP	1	35	6001006	BACK COVER 400/600 DMI8	2	8	70732	DECAL HIX LOGO 4"x1"
2	67	14621	NUT 6-32 ZPS	1	34	6001031	400 / 600 ENCLOSURE 4.3" CLCD ELEC	REF	7	72223	TERM BD 60I-2-KT37, 38,39
1	66	14910	DECAL HOT SURFACE SYMBOL	1	33	6004007	ASSY. STRAIN GAUGE	REF	6	73841	TERM 18-14 RING 1/4 NON M
2	65	15297	SCREW MCH 6-32x0.500 PHPH	1	32	6010063	PAD 16x20x1/2 MED BLACK MOLDED	1	5	82768	M-CASTING 16x20 LOWER F
1	64	15446	SCREW TAP 6x0.375 PHPH	1	31	6020065	400/600 WELDMENT 4.3" ELECTRIC BLUE	1	4	8611803	HT400 PIN THREADED .5x2.500
1	63	15751	SOLENOID 120V PULL	2	30	6021041	400/600 ROCKER LINK ELECTRIC BLUE	1	3*	8640502	TXM-20 / HT-400 E / DM-18 PACKAGING
1	62	15753	SPRING GAS 125# S-650	1	29	6102008	HT400 PIN MAIN ARM	6	2	87619	NUT 5/16-18 JAM
3	61	15834	SPRING HIX #105	1	28	6105004	M-HT400 PIN ROCKER LINK	1	1	89078	NUT 1/2-20 JAM NYLON INSERT ZPS

REV	DATE	BY	DESCRIPTION	ECO #
C	2-2-2022	MAS	REMOVE (I) 10347 ADD (II) 10348	

- NOTES:  
1. REFER TO WIRING DIAGRAM 6010060.  
2. REFERENCE MODEL 6010031.

11111 S-650 120V 4.3" CLCD

**HIX Corporation**

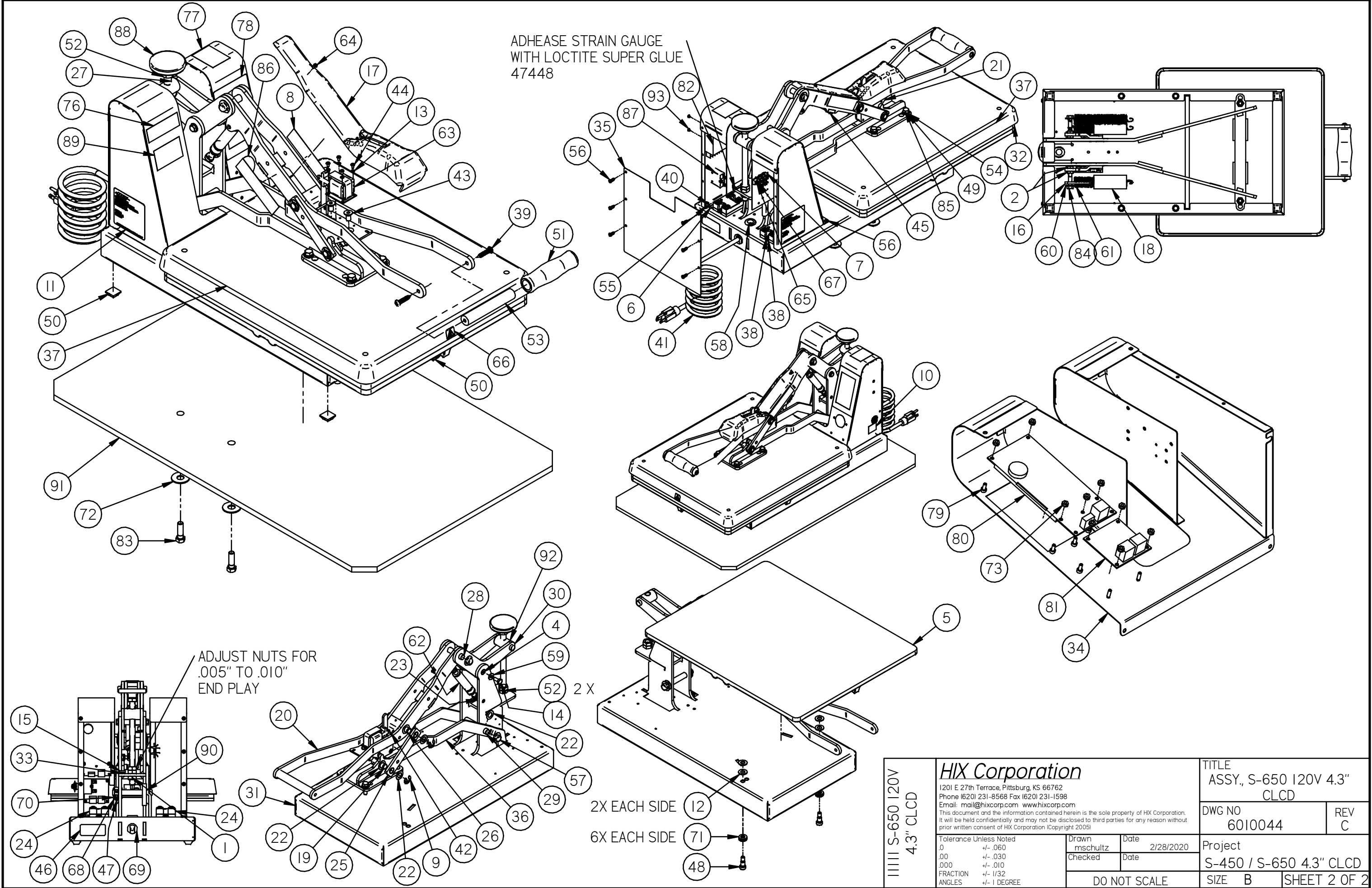
1201 E 27th Terrace, Pittsburg, KS 66762  
Phone (620) 231-8568 Fax (620) 231-1598  
Email: mail@hixcorp.com www.hixcorp.com  
This document and the information contained herein is the sole property of HIX Corporation. It will be held confidentially and may not be disclosed to third parties for any reason without prior written consent of HIX Corporation (Copyright 2005)

Tolerance Unless Noted  
0 +/- .060  
.00 +/- .030  
.000 +/- .010  
FRACTION +/- 1/32  
ANGLES +/- 1 DEGREE

Drawn mscultz Date 2/28/2020  
Checked Date  
DO NOT SCALE

TITLE ASSY., S-650 120V 4.3" CLCD	
DWG NO 6010044	REV C
Project S-450 / S-650 4.3" CLCD	
SIZE B	SHEET 1 OF 2

ADHEASE STRAIN GAUGE  
WITH LOCTITE SUPER GLUE  
47448



ADJUST NUTS FOR  
.005\" TO .010\"  
END PLAY

2X EACH SIDE  
6X EACH SIDE

||||| S-650 120V  
4.3\" CLCD

<b>HIX Corporation</b>		TITLE ASSY., S-650 120V 4.3\" CLCD	
1201 E 27th Terrace, Pittsburg, KS 66762 Phone (620) 231-8568 Fax (620) 231-1598 Email: mail@hixcorp.com www.hixcorp.com		DWG NO 6010044	
This document and the information contained herein is the sole property of HIX Corporation. It will be held confidentially and may not be disclosed to third parties for any reason without prior written consent of HIX Corporation (Copyright 2005)		REV C	
Tolerance Unless Noted	Drawn mschultz	Date 2/28/2020	Project S-450 / S-650 4.3\" CLCD
0 +/- .060	Checked	Date	SIZE B
.00 +/- .030	DO NOT SCALE		SHEET 2 OF 2
.000 +/- .010			
FRACTION +/- 1/32			
ANGLES +/- 1 DEGREE			