



**CATALOG OF  
REPLACEMENT  
PARTS**

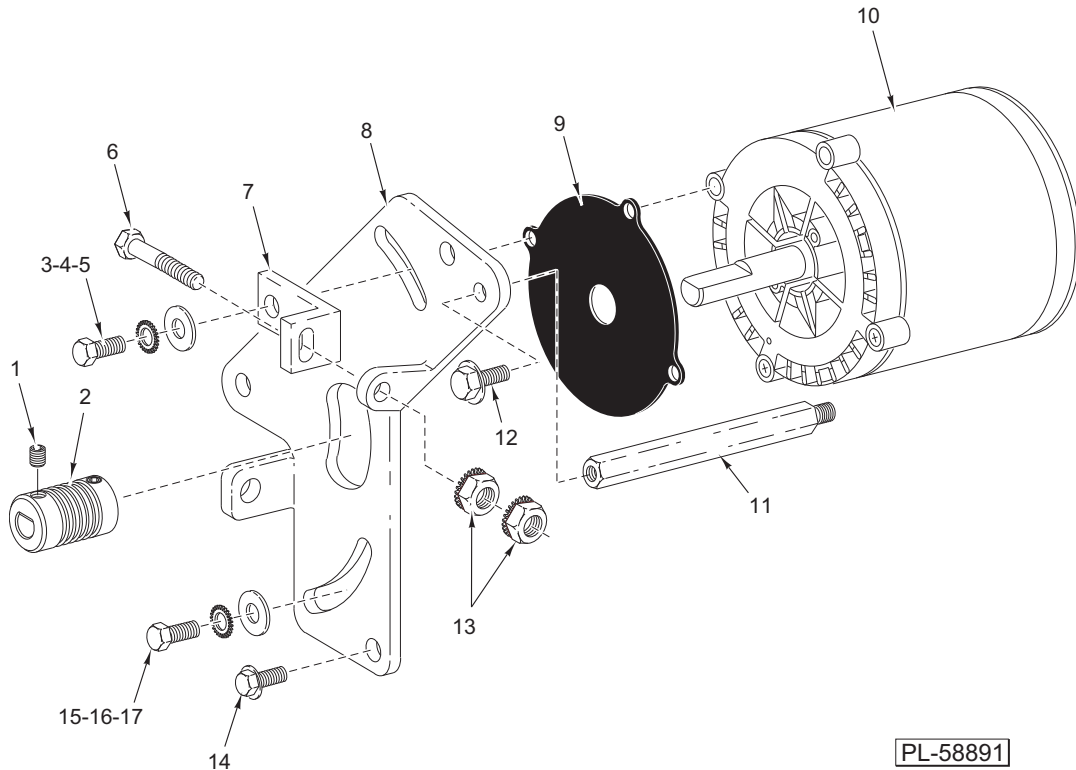
**MODEL 2212 SLICER**

**2212**

**ML-136132**

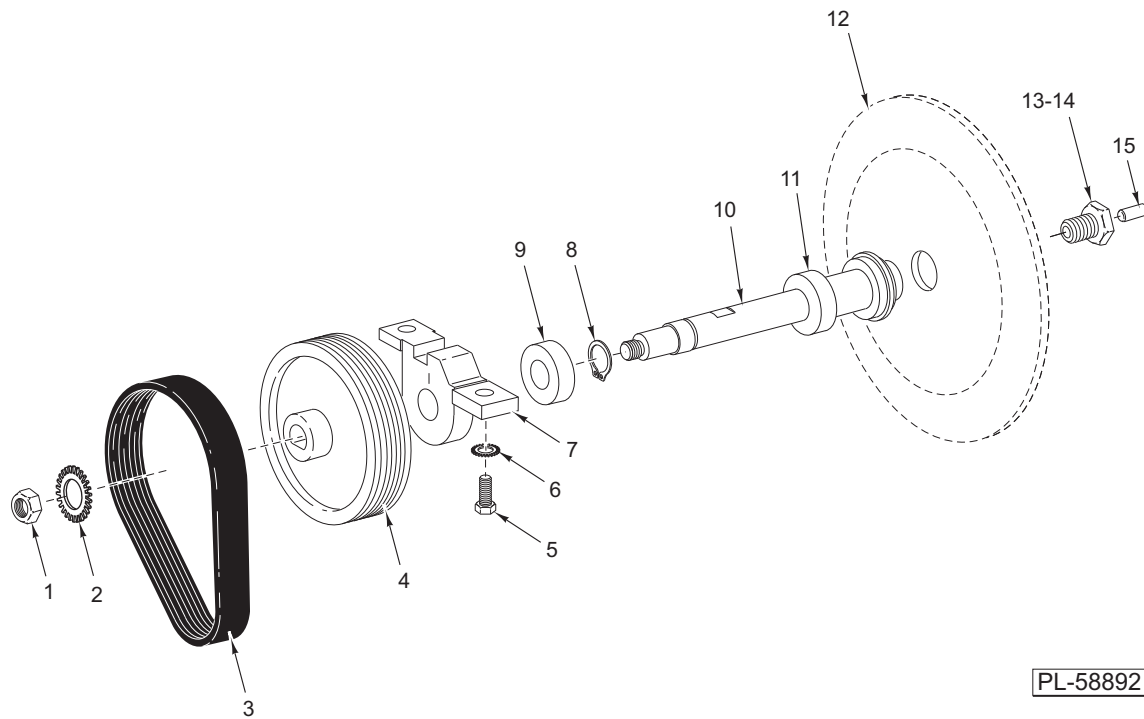
### Table of Contents

3	Knife Drive Motor
4	Knife Shaft
5	Top Cover and Lock Knob
7	Carriage Tray
9	Gauge Plate and Index
11	Knife Sharpener
13	Base Unit
15	Transport Carriage
16	Electrical Components



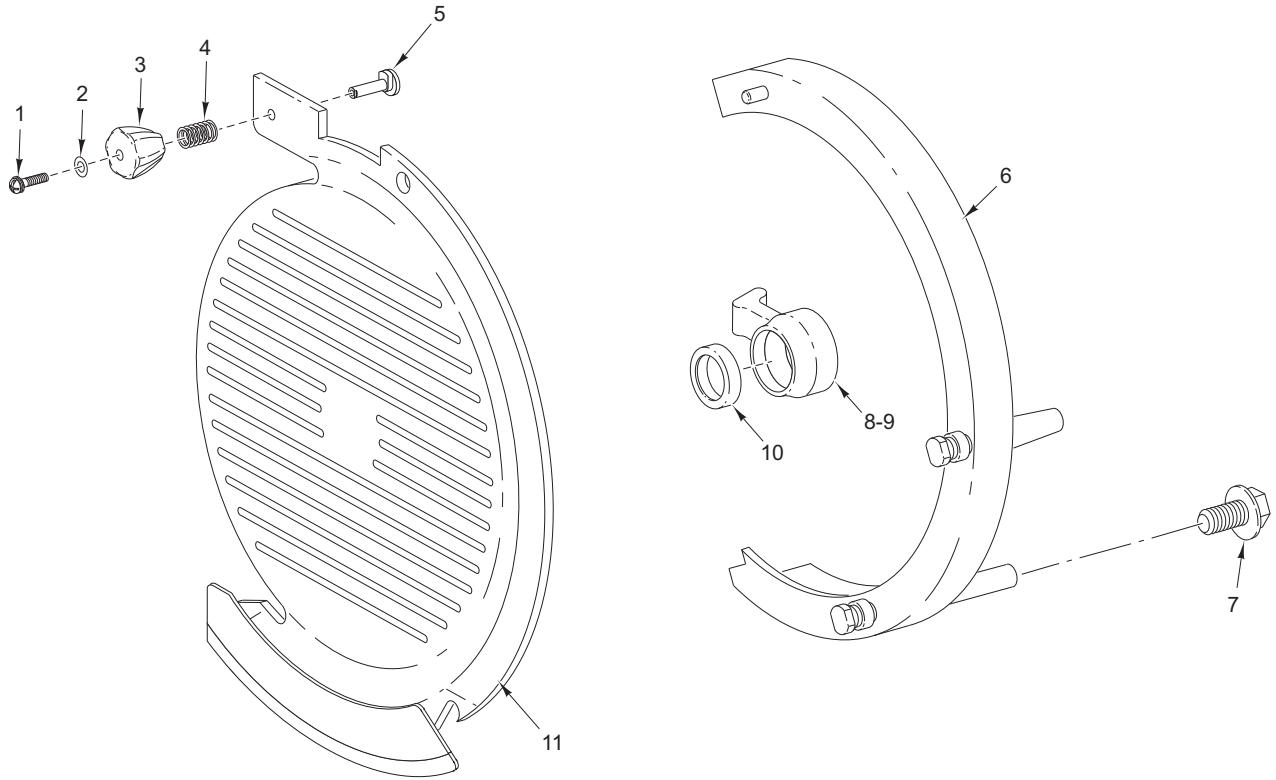
**KNIFE DRIVE MOTOR**

ILLUS.	PART NO.	NAME OF PART	AMT.
PL-58891			
1	SC-123-65	Set Screw 1/4-28 x 3/8 Hdls., Flat Pt.	2
2	00-438844-00002	Sheave – Poly "V"	1
3	SC-037-73	Cap Screw 3/8-16 x 1 Hex Hd.	2
4	WL-007-25	Lockwasher 3/8 External	2
5	WS-018-22	Washer	2
6	SC-118-98	Cap Screw 1/4-20 x 2 Hex Hd.	1
7	00-477532	Bracket – Tensioner Adjustment	1
8	00-477760	Plate – Motor	1
9	00-439032	Gasket – Motor	1
10	00-438846-00001	Motor (115 V., 60 Hz., 1 Ph.)	1
11	00-438984	Standoff	1
12	SC-041-01	Cap Screw 1/4-20 x 3/4 Hex Hd. (SST)	1
13	NS-044-14	Nut 1/4-20 Hex KEPS	2
14	SD-038-18	Self-Tapping Screw 5/16-18 x 3/4 Hex Washer Hd., Type RL	3
15	SC-037-73	Cap Screw 3/8-16 x 1 Hex Hd.	1
16	WL-007-25	Lockwasher 3/8 External	1
17	WS-018-22	Washer	1



### KNIFE SHAFT

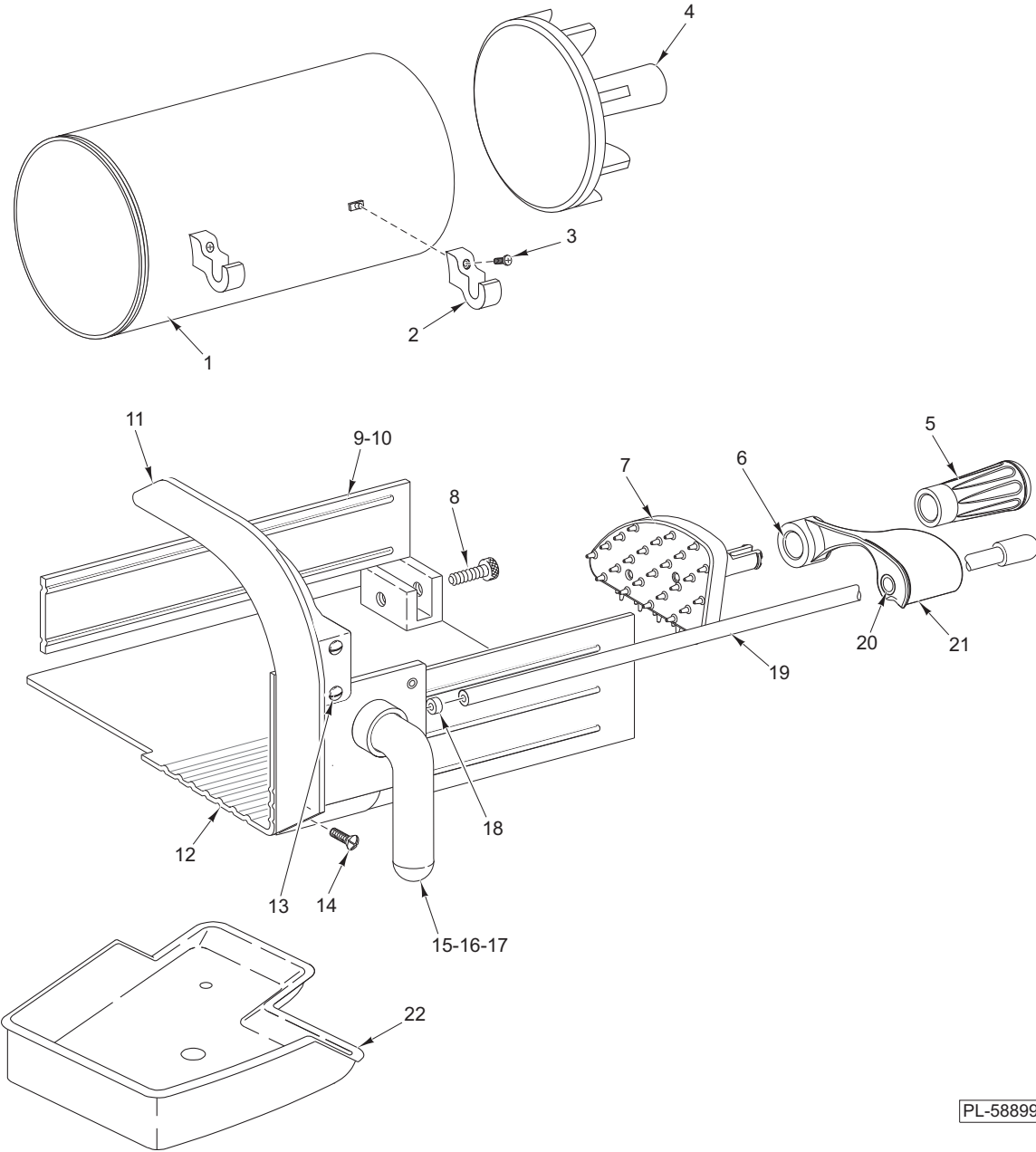
ILLUS.	PART NO.	NAME OF PART	AMT.
PL-58892			
1	NS-017-41	Jam Nut <sup>5</sup> / <sub>8</sub> -18 Hex.....	1
2	WL-004-17	Lockwasher <sup>5</sup> / <sub>8</sub> Light.....	1
3	00-438845	Belt – Poly “V”.....	1
4	00-439049	Sheave – Poly “V” Large 6 Groove.....	1
5	SC-037-73	Cap Screw <sup>3</sup> / <sub>8</sub> -16 x 1 Hex Hd. ....	2
6	WL-007-25	Lockwasher <sup>3</sup> / <sub>8</sub> External.....	2
7	00-875180-00002	Retainer – Lower Hub & Bearing (Incls. Item 9).....	1
8	RR-009-07	Ring – Retaining.....	1
9	BB-015-08	Bearing – Ball.....	1
10	00-438915-00002	Shaft – Knife.....	1
11	BB-015-08	Bearing – Ball.....	1
12	00-439870-00007	Knife (Packaged).....	1
13	00-073356-00002	Screw – Knife (Incls. Items 14 & 15).....	1
14	SC-064-04	Set Screw <sup>1</sup> / <sub>4</sub> -28 x <sup>3</sup> / <sub>8</sub> Hdls., Flat Pt. Nylok.....	1
15	00-073265	Plug – Plate Thrust.....	1



PL-58893

**TOP COVER AND LOCK KNOB**

ILLUS.	PART NO.	NAME OF PART	AMT.
PL-58893			
1	SC-122-53	Mach. Screw 4-40 x 5/8 Phil. Pan Hd.....	1
2	WL-013-02	Lockwasher #4 Internal Shakeproof.....	1
3	00-875266	Knob – Locking Top Cover.....	1
4	00-437994	Spring – Top Cover.....	1
5	00-875265	Stud – Locking Top Cover.....	1
6	00-438920-00003	Guard Assy. – Knife Ring.....	1
7	SD-038-14	Self-Tapping Screw 1/4-20 x 7/8 Hex Washer Hd., Type RL.....	2
8	00-875340	Mount – Deflector.....	1
9	SD-038-19	Self-Tapping Screw 8-18 x 3/8 Hex Washer Hd.....	3
10	00-875343	Knife Shaft Ring.....	1
11	00-873830-00006	Cover – Top & Lock Knob Assy. (Incls. Items 1 thru 5).....	1

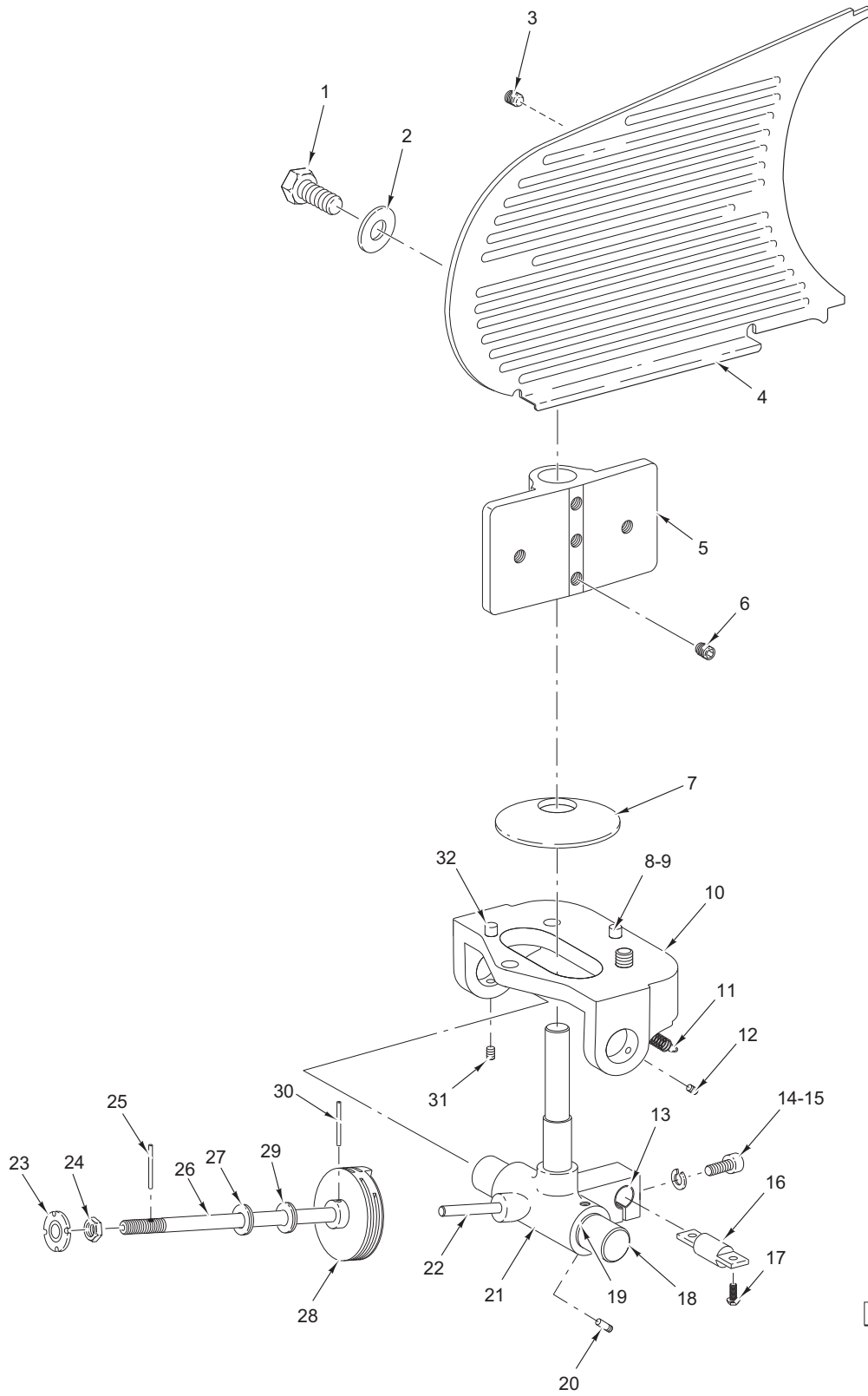


PL-58899

**CARRIAGE TRAY**

**CARRIAGE TRAY**

ILLUS. PL-58899	PART NO.	NAME OF PART	AMT.
1	00-479687	Chute – Feed (Incls. Items 2 & 3).....	1
2	00-875365	Hanger – Chute .....	2
3	SC-124-41	Mach. Screw 8-32 x 5/8 Phil. Oval Hd.....	2
4	00-075945	Pusher Assy. – Plate .....	1
5	00-875320	Handle – Feed Grip Assy. ....	1
6	00-479463	Washer – Wavy.....	1
7	00-913067	Grip – Product.....	1
8	00-290984	Thumb Screw – Fence.....	1
9	00-295118	Low Fence Assy. (Packaged) (SST).....	1
10	00-295117	High Fence Assy. (SST).....	1
11	00-875360-00001	Support Handle & Slide Rod.....	1
12	00-914515	Carriage Tray (SST).....	1
13	SC-123-10	Mach. Screw 8-32 x 1 1/2 Phil. Oval Hd. ....	2
14	SC-123-09	Mach. Screw 8-32 x 3/8 Phil. Oval Hd.....	3
15	00-875345	Handle – Carriage.....	1
16	WS-022-02	Washer.....	1
17	SC-041-02	Cap Screw 1/4-20 x 1 Hex Hd.....	1
18	WS-030-58	Washer.....	1
19	00-875354	Knob & Slide Rod Assy. ....	1
20	00-478254	Bushing.....	2
21	00-914508	Feed Arm Assy. (SST) (Packaged) .....	1
22	00-873480	Box – Slaw (Packaged) .....	1



PL-58894

**GAUGE PLATE AND INDEX**

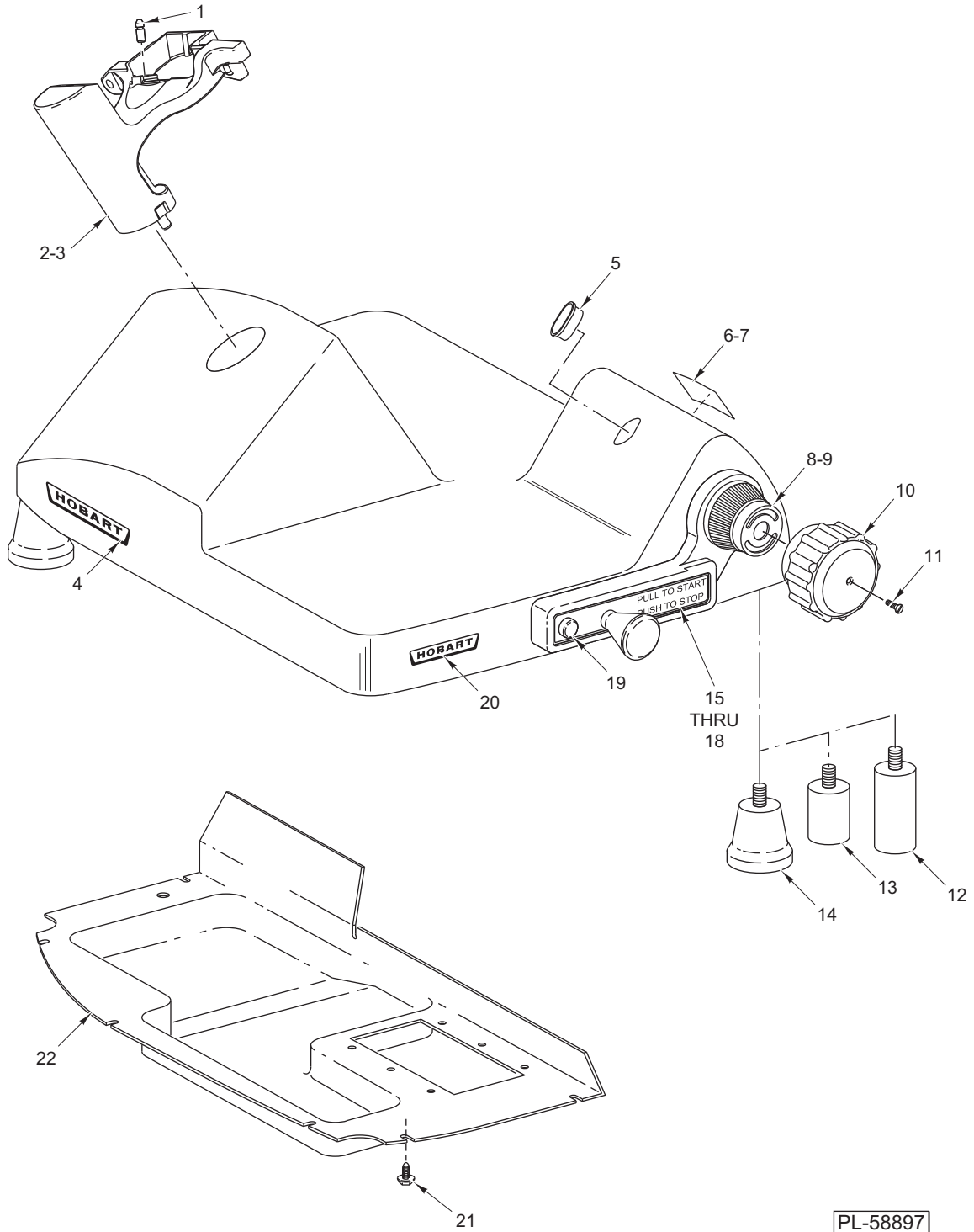
**GAUGE PLATE AND INDEX**

ILLUS.	PART NO.	NAME OF PART	AMT.
1	SC-041-16	Cap Screw $\frac{5}{16}$ -18 x 1 $\frac{3}{8}$ Hex Hd. (SST)	2
2	WS-005-32	Washer	2
3	SC-123-52	Set Screw $\frac{5}{16}$ -24 x $\frac{5}{8}$ Hdls., Flat Pt.	4
4	00-438980-00002	Gauge Plate Assy.	1
5	00-439021-00002	Mount – Special	1
6	SC-124-11	Set Screw $\frac{5}{16}$ -24 x $\frac{5}{8}$ Hdls., Cone Pt.	3
7	00-875361	Disc – Cover	1
8	SD-038-13	Self-Tapping Screw $\frac{5}{16}$ -18 x $\frac{7}{8}$ Hex Washer Hd., Type RL	3
9	WL-007-20	Lockwasher $\frac{5}{16}$ External Shakeproof	3
10	00-439072-00003	Support – Slide Index (Incls. Items 12, 31, & 32) (Order With Item 16)	1
11	00-478432	Spring – Index Backlash	1
12	PG-011-38	Pin – Grooved $\frac{5}{32}$ x $\frac{19}{32}$ (SST)	1
13	00-478425	Bushing – Anti-Rotation Rod	1
14	SC-124-46	Cap Screw 10-24 x $\frac{3}{4}$ Socket Hd.	3
15	WL-008-13	Lockwasher #10 Internal Shakeproof	3
16	00-478415	Rod – Index Anti-Rotation	1
17	SD-038-14	Self-Tapping Screw $\frac{1}{4}$ -20 x $\frac{7}{8}$ Hex Washer Hd., Type RL	2
18	00-438886	Rod – Index Slide	1
19	00-478426	Bushing – Index Slide	2
20	PG-011-19	Pin – Grooved $\frac{5}{32}$ x $\frac{1}{2}$ (SST)	1
21	00-478416-00002	Slide – Index Mechanism (Incls. Items 13, 14, 15, 19, 20, & 22)	1
22	00-478461	Pin – Index Cam	1
23	00-076948	Disc – Indexing Drive	1
24	00-010928-00002	Nut – Special	2
25	RP-002-40	Pin – Roll $\frac{3}{32}$ Dia. x $\frac{3}{4}$ Lg.	1
26	00-438890	Camshaft	1
27	00-088298	Washer – Belleville	2
28	00-479625	Cam – Indexing	1
29	WS-030-58	Washer	2
30	RP-003-12	Pin – Roll $\frac{1}{8}$ Dia. x 1 $\frac{1}{4}$ Lg.	1
31	SC-088-71	Set Screw 8-32 x $\frac{3}{8}$ Hdls., Flat Pt.	2
32	00-011800-00305	Pin – Dowel $\frac{1}{4}$ x $\frac{3}{4}$	1



**KNIFE SHARPENER**

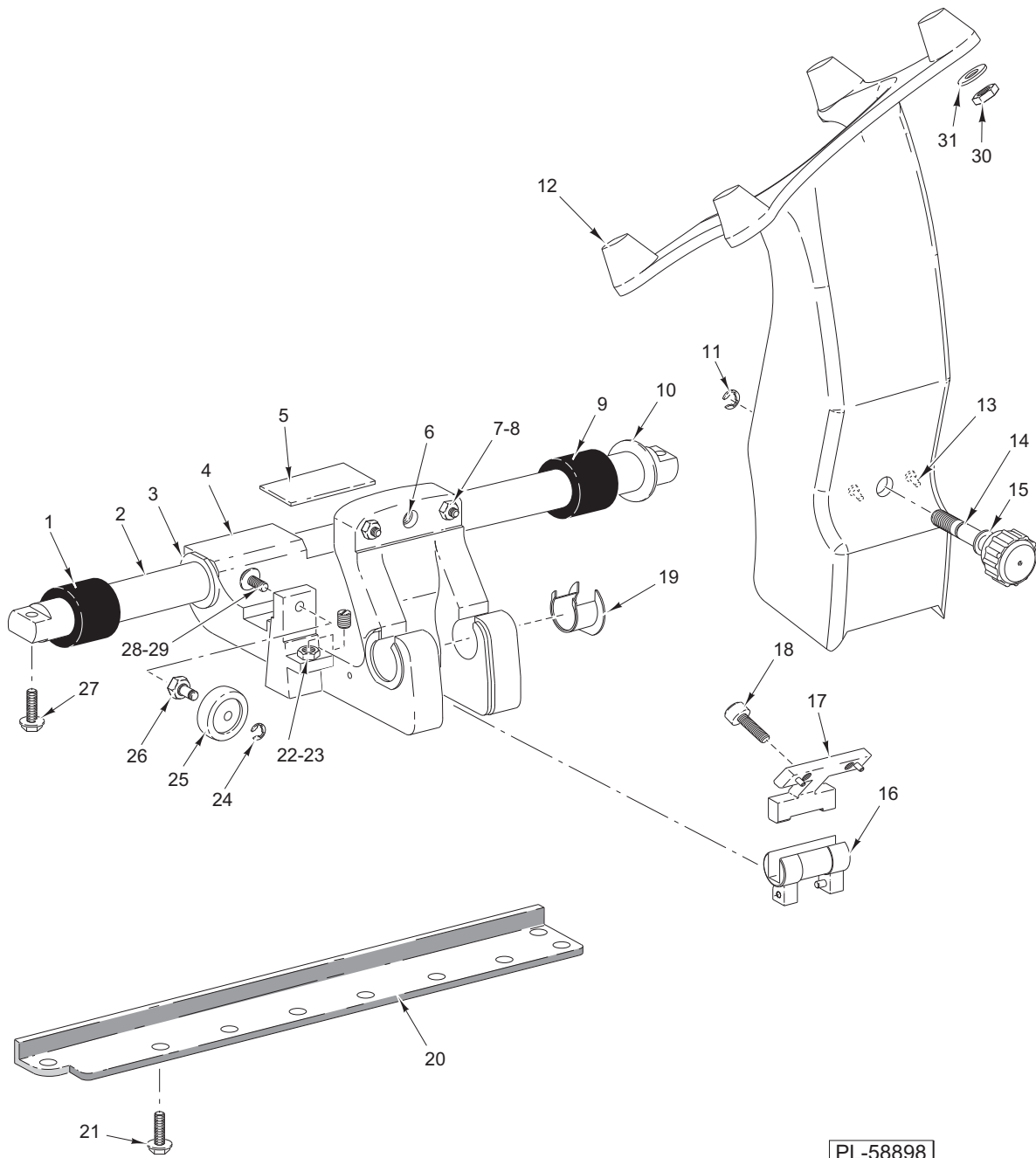
ILLUS. PL-58895	PART NO.	NAME OF PART	AMT.
1	SC-129-63	Mach. Screw 10-24 x 1/2 Phil. Truss Hd. Nyllok (SST).....	2
2	00-438459-00003	Plate & Cover Assy. ....	1
3	00-875359	Handle – Sharpener Cam .....	1
4	00-479953	Screw – Shoulder 1/4 - 20 .....	1
5	00-914518	Stone Service Kit .....	1
6	00-873848	Shaft – Grinding Wheel.....	1
7	00-873852	Housing & Stud Assy.....	1
8	00-438437	Spring – Return.....	1
9	00-873851	Plunger & Ball Bearing Assy. ....	1
10	00-875531	Spring – Main.....	1
11	00-875339	Actuator .....	1
12	SC-122-87	Mach. Screw Special 8-32 x 1/4 Pan Hd. ....	1
13	00-437239	Label – Instruction .....	1
14	RR-006-22	Ring – Retaining .....	1
15	00-438426	Spring – Truing Arm .....	1
16	00-875367	Arm – Truing .....	1
17	00-479527	Washer – Spring Crescent.....	1
18	SC-122-85	Mach. Screw Special 4-40 x 1/4 Flat Hd. ....	2
19	00-439700	Plate – Rear Locking .....	1
20	SC-122-84	Mach. Screw 2-56 x 9/16 Pan Hd.....	1
21	00-438435	U-Spring (Long End Inserted Into Housing).....	1
22	00-435814	Screw – Retaining (RH) .....	1
23	00-438442	Screw – Shoulder Special.....	1
24	SC-122-87	Mach. Screw 8-32 x 1/4 Pan Hd. ....	1
25	00-439698	Lever – Locking .....	1
26	00-478747	Stone – Truing .....	1
27	00-435324	Spring – Truing Stone.....	2
28	RR-006-22	Ring – Retaining .....	1
29	00-875368	Push Rod – Truing .....	1
	00-873847-00006	Sharpener Assy. (Incls. Items 1 thru 29).....	1



**BASE UNIT**

**BASE UNIT**

ILLUS. PL-58897	PART NO.	NAME OF PART	AMT.
1	00-873733	Pin – Lock .....	1
2	00-914217-00004	Mount – Sharpener Housing .....	1
3	SD-038-13	Self-Tapping Screw <sup>5</sup> / <sub>16</sub> -18 x <sup>7</sup> / <sub>8</sub> Hex Washer Hd., Type RL.....	2
4	00-477739	Logo – Hobart (Large) .....	2
5	00-875347	Ring – Drip .....	1
6	00-438131-054-2	Label – Warning.....	1
7	00-121676-00001	Self-Tapping Screw.....	2
8	00-875370	Dial Assy. ....	1
9	00-077629	Bushing .....	1
10	00-875348	Knob – Indexing .....	1
11	SC-023-10	Mach. Screw 10-24 x <sup>3</sup> / <sub>4</sub> Oval Hd.....	1
12	00-477773	Leg Set (4 In.) (Packaged).....	1
13	00-873766	Leg Set (3 In.) (Packaged).....	1
14	00-875371	Foot (Tall).....	4
15	00-875349	Bezel – Index .....	1
16	SD-038-21	Self-Tapping Screw 8-32 x 1 <sup>1</sup> / <sub>4</sub> Phil. Pan Hd., Type TT.....	2
17	SD-038-20	Self-Tapping Screw 8-32 x 1 Phil. Pan Hd., Type TT.....	2
18	00-477735	Label – Start/Stop .....	1
19	00-439042-00001	Lamp (125 V.) .....	1
20	00-477740	Logo – Hobart (Small).....	2
21	SD-038-16	Self-Tapping Screw 6-32 x <sup>3</sup> / <sub>8</sub> Hex Washer Hd., Type RL.....	11
22	00-873738	Cover – Bottom .....	1

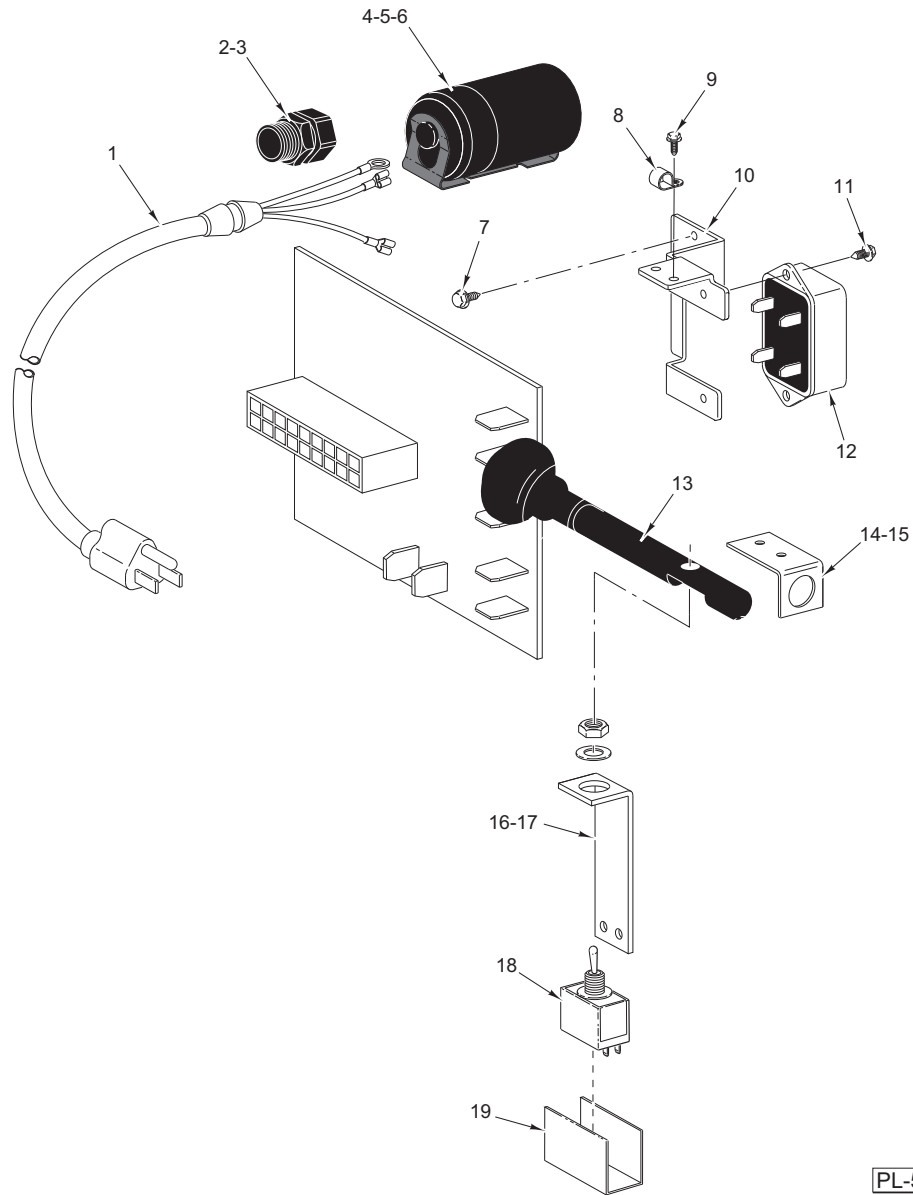


**TRANSPORT CARRIAGE**

### TRANSPORT CARRIAGE

ILLUS. PL-58898	PART NO.	NAME OF PART	AMT.
1	00-477555	Bumper – Slide Rod.....	1
2	00-438907	Slide – Rod .....	1
3	00-875658	Bearing – Transport .....	2
4	00-875659-00002	Transport – Carriage.....	1
5	00-439017	Wick – Slide Rod Lubrication.....	1
6	00-519826	Insert – Screw.....	1
7	SC-128-35	Set Screw <sup>5</sup> / <sub>16</sub> -18 x 1 Slotted Hds., Flat Pt. ....	2
8	NS-018-06	Jam Nut <sup>5</sup> / <sub>16</sub> -18 Hex .....	2
9	00-477555	Bumper – Slide Rod.....	1
10	00-435708	Washer – Backup (SST).....	2
11	RR-012-17	Ring – Retaining .....	1
12	00-479676-00002	Support – Tray Assy. ....	1
13	00-439045	Stud – Drive .....	2
14	00-875450	Knob – SPRT Tray Assy.....	1
15	00-478021	Washer – Belleville .....	2
16	00-873534-00002	Pivot – Tilttable Carrier .....	1
17	00-873535-00002	Plate – Key .....	1
18	SC-123-08	Cap Screw <sup>1</sup> / <sub>4</sub> -20 x <sup>5</sup> / <sub>8</sub> Soc. Hd.....	2
19	00-439006	Bearing – Pivot .....	2
20	00-438908	Bar – Transport Roller.....	1
21	SD-038-22	Self-Tapping Screw 10-24 x <sup>1</sup> / <sub>2</sub> Hex Washer Hd., Type RL .....	9
22	00-477747	Set Screw – Special.....	1
23	NS-017-20	Jam Nut <sup>3</sup> / <sub>8</sub> -24 Hex.....	1
24	RR-006-23	Ring – Retaining .....	1
25	00-478420	Roller – Transport .....	1
26	00-438911	Screw – Adjusting .....	1
27	SD-033-08	Self-Tapping Screw <sup>5</sup> / <sub>16</sub> -18 x 1 Hex Washer Hd., Type TT .....	2
28	WS-003-49	Washer.....	1
29	SC-123-56	Mach. Screw <sup>1</sup> / <sub>4</sub> -28 x <sup>1</sup> / <sub>2</sub> Hex Button Hd. ....	1
30	NS-015-01	Nut <sup>1</sup> / <sub>4</sub> -20 Hex (SST).....	4
31	WS-022-04	Washer.....	4

**MODEL 2212 SLICER REPLACEMENT PARTS**



PL-58896

**ELECTRICAL COMPONENTS**

ILLUS.	PART NO.	NAME OF PART	AMT.
1	00-117542-00095	Cord & Plug Assy. (120 V.).....	1
2	FE-021-21	Strain Relief (Use With Item 1) .....	1
3	WL-010-01	Washer (Use With Item 1).....	1
4	00-070486-00001	End Cap – Capacitor .....	1
5	00-070487-00026	Capacitor – Motor Start.....	1
6	00-066621-00001	Bracket – Capacitor .....	1
7	SD-038-16	Self-Tapping Screw 6-32 x 3/8 Hex Washer Hd., Type RL.....	2
8	00-078752-00012	Clamp – Cable .....	1
9	SD-038-16	Self-Tapping Screw 6-32 x 3/8 Hex Washer Hd., Type RL.....	1
10	00-438929	Bracket – Motor Start Switch .....	1
11	SD-039-21	Self-Tapping Screw 6-32 x 3/8 Phil. Pan Hd., Type F.....	2
12	00-271612-00002	Switch – Electronic Start.....	1
13	00-875668	Knob – On/Off.....	1
14	00-439041	Bracket – Switch Rod .....	1
15	SD-038-16	Self-Tapping Screw 6-32 x 3/8 Hex Washer Hd., Type RL.....	2
16	00-439040	Bracket – On/Off Switch.....	1
17	SD-038-16	Self-Tapping Screw 6-32 x 3/8 Hex Washer Hd., Type RL.....	2
18	00-087711-148-1	Switch – Toggle (2-Post).....	1
19	00-873803	Cover – Switch Mylar.....	1