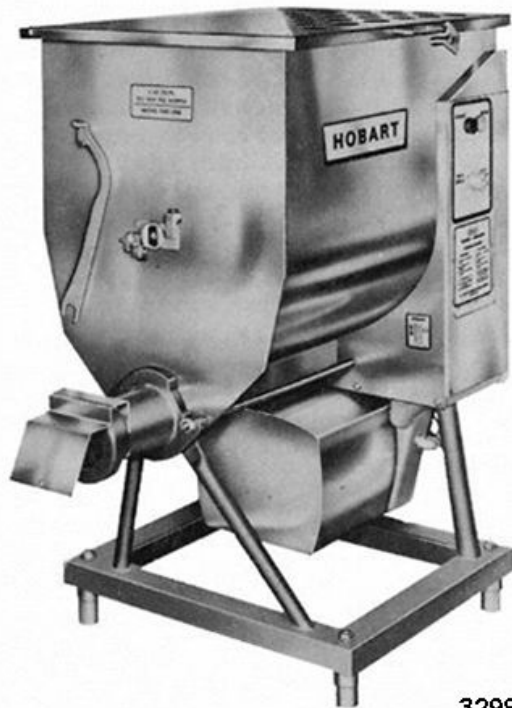




CATALOG OF REPLACEMENT PARTS



32989

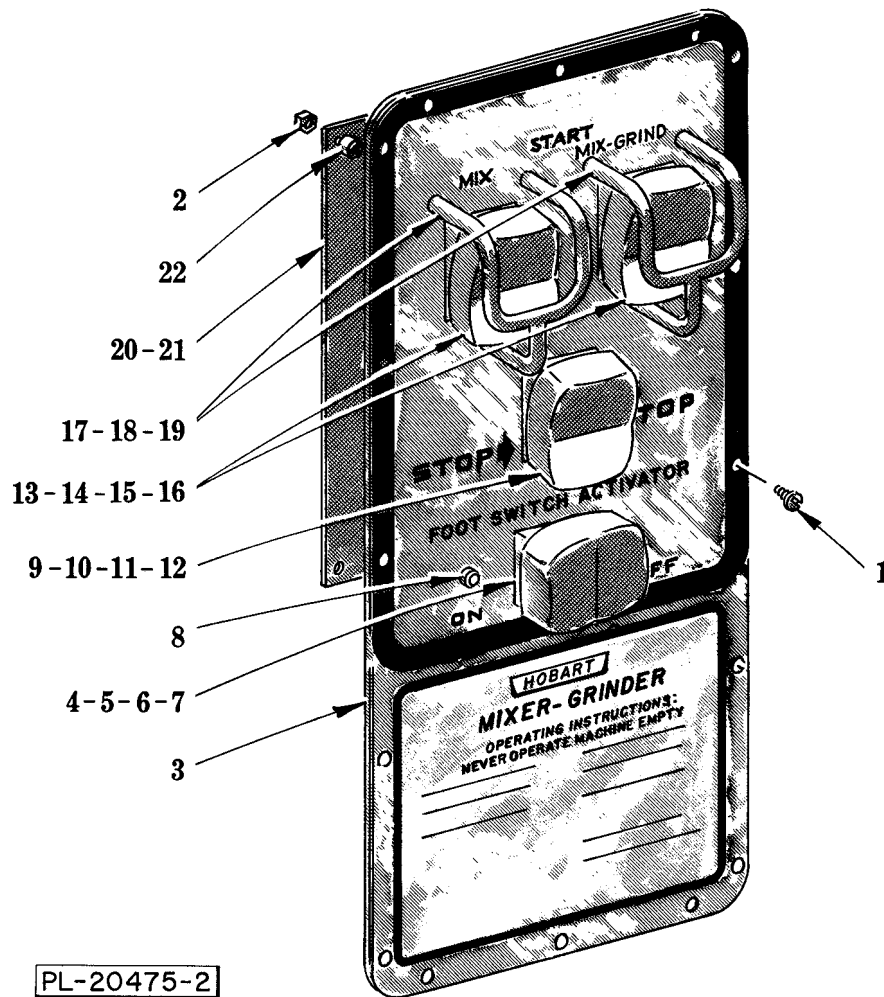
Mixer -Grinders, ML 19633 LH (Standard Hopper W/O Feed Opening), ML 19634 RH (Optional Hopper W/Feed Opening), ML 19635 LH (Optional Hopper W/ Feed Opening) ML 19239 RH (Standard Hopper W/O Feed Opening), ML 19240 LH (Standard Hopper W/O Feed Opening), ML 19241 RH (Optional Hopper W/ Feed Opening), ML 19242 LH (Optional Hopper W/Feed Opening), ML 19632 RH (Standard Hopper W/O Feed Opening)

Mixer -Grinders, ML 19633 LH (Standard Hopper W/O Feed Opening), ML 19634 RH (Optional Hopper W/Feed Opening), ML 19635 LH (Optional Hopper W/Feed Opening) ML 19239 RH (Standard Hopper W/O Feed Opening), ML 19240 LH (Standard Hopper W/O Feed Opening), ML 19241 RH (Optional Hopper W/Feed Opening), ML 19242 LH (Optional Hopper W/Feed Opening), ML 19632 RH (Standard Hopper W/O Feed Opening) REPLACEMENT PARTS

Table of Contents

5	CONTROL PANEL W/FOOT SWITCH ACTIVATOR
7	FOOT SWITCH UNIT (ELECTRIC)
9	FOOT SWITCH UNIT (PNEUMATIC)
11	CONTROL BOX AND INTERLOCK UNIT
15	CONTROL PANEL UNIT
17	SIDE FEED UNIT
19	HOPPER AND FRAME UNIT
23	MOTOR AND GEAR CASE
27	MOTOR PARTS
29	CONVEYOR AND MIXING ARM UNIT
31	#46 GRINDER UNIT

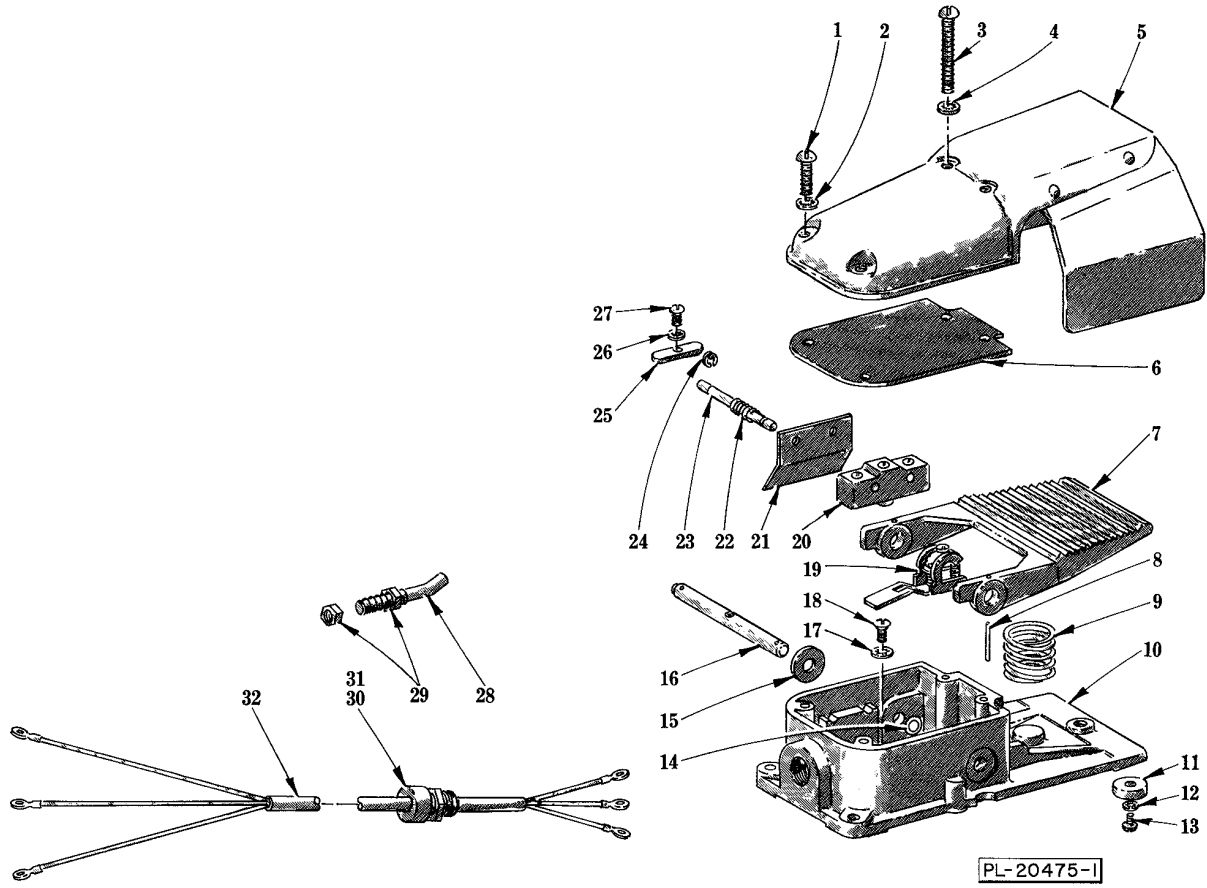
Mixer -Grinders, ML 19633 LH (Standard Hopper W/O Feed Opening), ML 19634 RH (Optional Hopper W/Feed Opening), ML 19635 LH (Optional Hopper W/Feed Opening) ML 19239 RH (Standard Hopper W/O Feed Opening), ML 19240 LH (Standard Hopper W/O Feed Opening), ML 19241 RH (Optional Hopper W/Feed Opening), ML 19242 LH (Optional Hopper W/Feed Opening), ML 19632 RH (Standard Hopper W/O Feed Opening) REPLACEMENT PARTS



CONTROL PANEL W/FOOT SWITCH ACTIVATOR

CONTROL PANEL W/FOOT SWITCH ACTIVATOR

ILLUS.	PART NO.	NAME OF PART	AMT.
PL-20475-2A			
1	SD-29-15	Self-Tapping Screw 10-24 x 5/8 Pan Hd., Type F.....	16
2	NS-31-15	Lock Nut 10-24 Hex (Nylon).....	8
3	124500	Control Panel Assy.....	1
4	120872-3	Switch Assy. (Foot Switch).....	1
5	SD-32-3	Self-Tapping Screw 6-19 x 3/8 Phil. Pan Hd. "Plastite".....	2
6	WS-28-1	Washer.....	2
7	WL-7-2	Lock Washer 6 Ext. Shakeproof.....	2
8	294700-4-3	Pilot Light Assy.....	1
9	120872-4	Stop Switch Assy.....	1
10	SD-32-3	Self-Tapping Screw 6-19 x 3/8 Phil. Pan Hd. "Plastite".....	2
11	WS-28-1	Washer.....	2
12	WL-7-2	Lock Washer 6 Ext. Shakeproof.....	2
13	120872-2	Start Switch Assy. (Mix & Mix-Grind).....	2
14	SD-32-3	Self-Tapping Screw 6-19 x 3/8 Phil. Pan Hd. "Plastite".....	4
15	WS-28-1	Washer.....	4
16	WL-7-2	Lock Washer 6 Ext. Shakeproof.....	4
17	115090	Switch Guard Assy.....	2
18	SC-21-8	Mach. Screw 6-32 x 3/8 Rd. Hd.....	6
19	WS-23-44	Washer.....	6
20	294420	Reed Mounting Board Assy. (Incls. item 21).....	1
21	111964	Switch - Reed.....	4
22	117495	Spacer.....	8
	111889	Relay.....	3

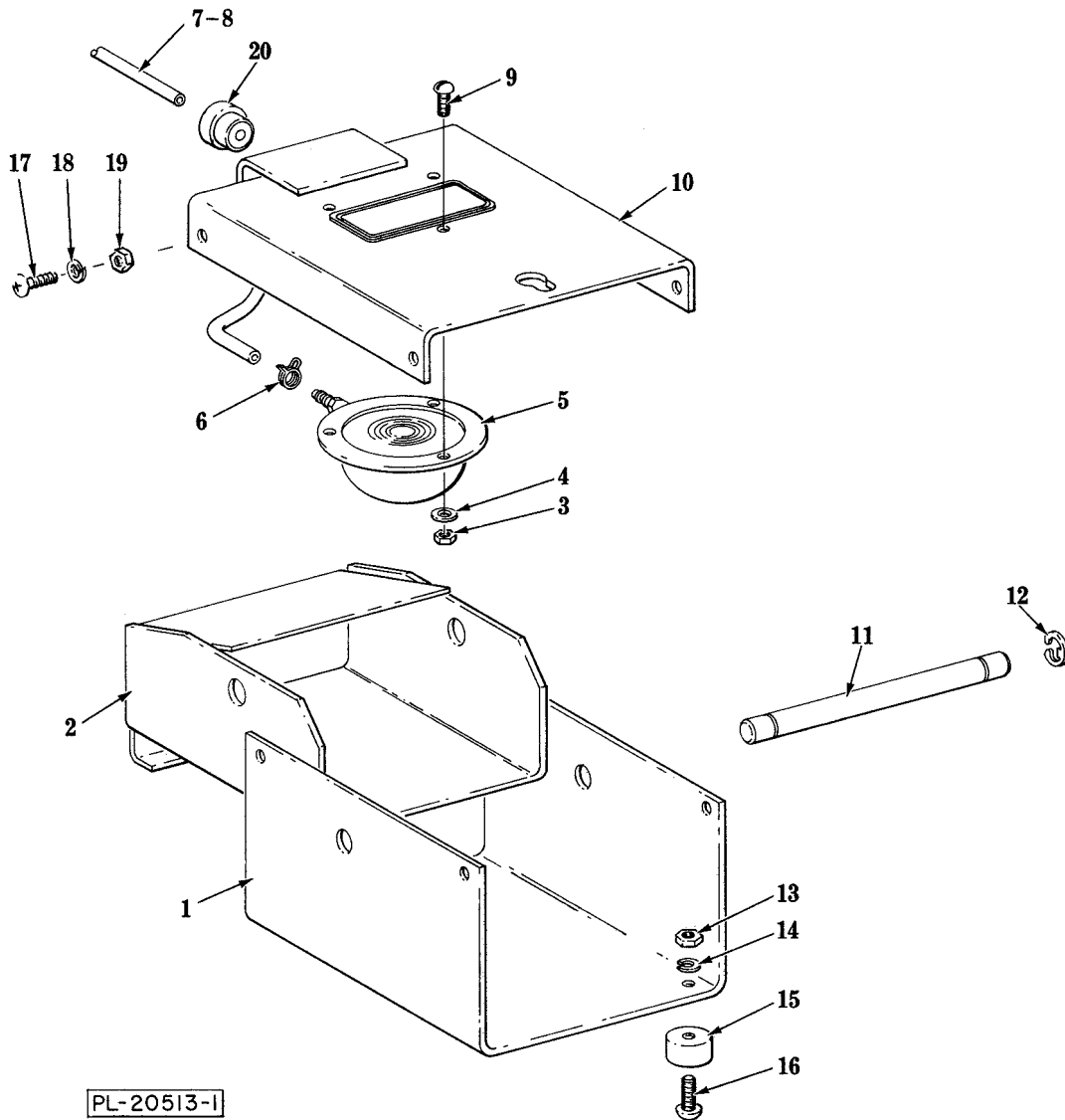


FOOT SWITCH UNIT (ELECTRIC)

FOOT SWITCH UNIT (ELECTRIC)

ILLUS.	PART NO.	NAME OF PART	AMT.
PL-20475-1A			
1	81997-31	Screw - Cover (Short).....	2
2	81997-2	Washer - Cover & Guard Screw.....	2
3	81997-1	Screw - Cover (Long).....	2
4	81997-2	Washer - Cover & Guard Screw.....	2
5	81997-3	Cover - Guard Assy.....	1
6	81997-6	Gasket - Cover.....	1
7	81997-9	Treadle.....	1
8	81997-10	Spirol Pin.....	2
9	81997-11	Spring - Treadle (Main).....	1
10	81997-12	Base.....	1
11	81997-13	Foot - Rubber.....	4
12	81998-15	Washer - Rubber Foot Screw.....	4
13	81997-14	Screw - Rubber Foot.....	4
14	81997-16	"O" Ring.....	2
15	81997-17	Spacer.....	2
16	81997-18	Rod - Pivot.....	1
17	81997-19	NLA - Obsolete--Washer - Ground Screw.....	1
18	81997-20	NLA - Obsolete--Screw - Ground.....	1
19	81997-33	Actuating Mech. Assy.....	1
20	81997-23	Switch.....	1
21	81997-24	Insulation.....	2
22	81997-25	Spring - Spacing.....	4
23	81997-26	Rod - Interior.....	2
24	81997-27	Retaining Ring.....	4
25	81997-28	Clamp - Interior Rod.....	2
26	81997-29	Washer - Interior Rod Clamp Screw.....	2
27	81997-30	Screw - Interior Rod Clamp.....	2
28	113117	Hanger - Foot Switch.....	1
29	NS-18-6	Jam Nut 5/16-18 Hex Fin.....	2
30	FE-6-49	Connector - Strain Relief (1/2") (Switch).....	1
31	FE-15-38	Connector - Strain Relief (3/4") (Transmission Case).....	1
32	80828-2	Cord.....	1
	87711-62-1	Foot Switch Assy. (Incls. items 1 thru 27).....	1

Mixer -Grinders, ML 19633 LH (Standard Hopper W/O Feed Opening), ML 19634 RH (Optional Hopper W/Feed Opening), ML 19635 LH (Optional Hopper W/Feed Opening) ML 19239 RH (Standard Hopper W/O Feed Opening), ML 19240 LH (Standard Hopper W/O Feed Opening), ML 19241 RH (Optional Hopper W/Feed Opening), ML 19242 LH (Optional Hopper W/Feed Opening), ML 19632 RH (Standard Hopper W/O Feed Opening) REPLACEMENT PARTS



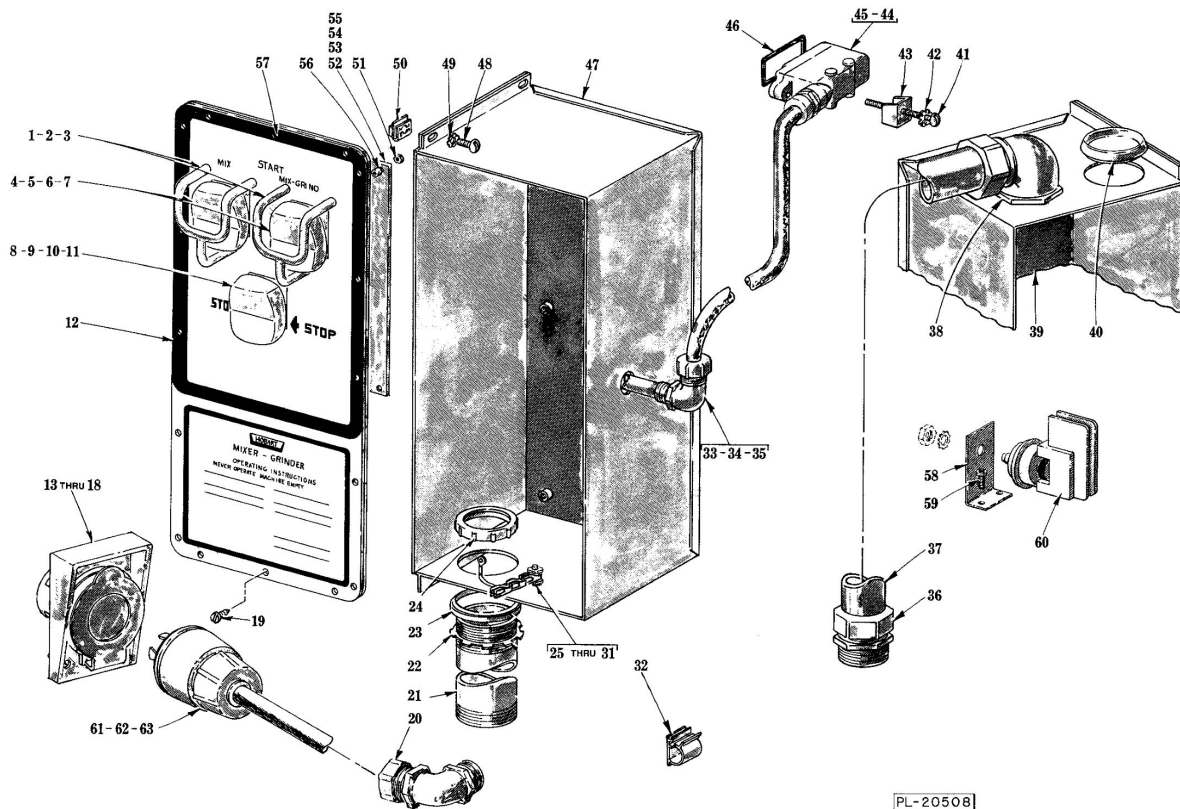
FOOT SWITCH UNIT (PNEUMATIC)

Mixer -Grinders, ML 19633 LH (Standard Hopper W/O Feed Opening), ML 19634 RH (Optional Hopper W/Feed Opening), ML 19635 LH (Optional Hopper W/Feed Opening) ML 19239 RH (Standard Hopper W/O Feed Opening), ML 19240 LH (Standard Hopper W/O Feed Opening), ML 19241 RH (Optional Hopper W/Feed Opening), ML 19242 LH (Optional Hopper W/Feed Opening), ML 19632 RH (Standard Hopper W/O Feed Opening) REPLACEMENT PARTS

FOOT SWITCH UNIT (PNEUMATIC)

ILLUS.	PART NO.	NAME OF PART	AMT.
	PL-20513-1A		
1	292632	Base - Foot Switch.....	1
2	292635	Switch - Rocker Assy.....	1
3	NS-31-8	Nut - Special Stop 8-32.....	3
4	WS-19-10	Washer.....	3
5	87711-214-1	Switch - Actuator.....	1
6	115747-8	Clamp - Hose.....	2
7	292629-2	Tubing - Air (R.H. Mach.).....	1
8	292629-3	Tubing - Air (L.H. Mach.).....	1
9	SC-21-15	Mach. Screw 8-32 x 1/2 Rd. Hd.....	3
10	292633	Cover - Foot Switch.....	1
11	292638	Shaft - Pivot.....	1
12	RR-10-12	Retaining Ring.....	2
13	NS-11-18	Mach. Nut 10-24 Hex.....	4
14	WL-6-7	Lock Washer 10 Medium.....	4
15	19105-2	Bumper.....	4
16	SC-21-23	Mach. Screw 10-24 x 1/2 Rd. Hd.....	4
17	SC-21-23	Mach. Screw 10-24 x 1/2 Rd. Hd.....	4
18	WL-6-7	Lock Washer 10 Medium.....	4
19	NS-11-18	Mach. Nut 10-24 Hex.....	4
20	FE-14-47	Strain Relief.....	1
	292631-2	Foot Switch Assy. (R.H. Mach.) (Incls. items 1 thru 7 & 9 thru 20).....	1
	292631-3	Foot Switch Assy. (L.H. Mach.) (Incls. items 1 thru 6 & 8 thru 20).....	1

Mixer -Grinders, ML 19633 LH (Standard Hopper W/O Feed Opening), ML 19634 RH (Optional Hopper W/Feed Opening), ML 19635 LH (Optional Hopper W/Feed Opening) ML 19239 RH (Standard Hopper W/O Feed Opening), ML 19240 LH (Standard Hopper W/O Feed Opening), ML 19241 RH (Optional Hopper W/Feed Opening), ML 19242 LH (Optional Hopper W/Feed Opening), ML 19632 RH (Standard Hopper W/O Feed Opening) REPLACEMENT PARTS



CONTROL BOX AND INTERLOCK UNIT

Mixer -Grinders, ML 19633 LH (Standard Hopper W/O Feed Opening), ML 19634 RH (Optional Hopper W/Feed Opening), ML 19635 LH (Optional Hopper W/Feed Opening) ML 19239 RH (Standard Hopper W/O Feed Opening), ML 19240 LH (Standard Hopper W/O Feed Opening), ML 19241 RH (Optional Hopper W/Feed Opening), ML 19242 LH (Optional Hopper W/Feed Opening), ML 19632 RH (Standard Hopper W/O Feed Opening) REPLACEMENT PARTS

CONTROL BOX AND INTERLOCK UNIT

ILLUS. PL-20508	PART NO.	NAME OF PART	AMT.
1	115090	Switch Guard Assy.....	2
2	SC-21-8	Mach. Screw 6-32 x 3/8 Rd. Hd.....	6
3	WS-23-44	Washer.....	6
4	120872-2	Start Switch Assy. (Mix & Mix-Grind).....	2
5	SD-32-3	Self-Tapping Screw 6-19 x 3/8 Phil. Pan Hd. "Plastite".....	4
6	WS-28-1	Washer.....	4
7	WL-7-2	Lock Washer 6 Ext. Shakeproof.....	4
8	120872-4	Stop Switch Assy.....	1
9	SD-32-3	Self-Tapping Screw 6-19 x 3/8 Phil. Pan Hd. "Plastite".....	2
10	WS-28-1	Washer.....	2
11	WL-7-2	Lock Washer 6 Ext. Shakeproof.....	2
12	124499	Control Panel Assy.....	1
13	295692	Receptacle (200 V., 60 Hz.).....	1
14	315147	Receptacle (230 V., 60 Hz.).....	1
15	315149	Receptacle (460 V., 60 Hz.).....	1
16	295691	Connector - Pendent (200 V., 60 Hz.).....	1
17	315141	Connector - Pendent (230 V., 60 Hz.).....	1
18	315143	Connector - Pendent (460 V., 60 Hz.).....	1
19	SD-29-15	Self-Tapping Screw 10-24 x 5/8 Pan Hd., Type F.....	7
20	FE-15-12	Connector 90 Degree Strain Relief (1/4").....	1
*21	106043-1	Conduit (Junction Box to Control Box).....	1
*22	FE-9-7	Lock Nut 1 1/4 Cnd.....	1
*23	FE-8-26	Gasket Assy. (1 1/4 ").....	1
*24	FE-9-6	Bushing - Conduit (1 1/4").....	1
25	64744-6	Chain.....	1
26	SC-18-38	Mach. Screw 8-32 x 1/2 Pan Hd.....	1
27	NS-9-12	Mach. Nut 8-32 Hex.....	2
28	WL-7-7	Lock Washer 8 Ext. Shakeproof.....	1
29	87526-303	Lead Wire Asy. (Ground).....	1
30	WL-7-12	Lock Washer 10 Ext. Shakeproof.....	1
31	NS-9-22	Mach. Nut 10-24 Hex.....	2
32	106825-1	Clip - Wiring.....	4
33	FE-15-10	Connector 90 Degree Strain Relief (1/2").....	1
34	FE-6p7	Lock Nut 1/2" Cnd.....	1
35	FE-8-10	1/2" Gasket Assy.....	1
**36	FE-15-8	Connector - Straight "Sealtite" (1 1/4 Male Thd. x 1 1/4 Flex Cnd.).....	1
**37	106044	Conduit 1 1/4" "Sealtite".....	1
**38	FE-15-9	Connector 90 Degree "Sealtite" (1 1/4 Male Thd x 1 1/4 Flex. Cnd.).....	1
**39	105377-2	NLA - Obsolete--Control Box Assy.....	1
**40	106827-2	Caplug.....	1
41	SC-12-72	Mach. Screw 10-24 x 1 3/4 Fil. Hd.....	1
42	WL-7-12	Lock Washer 10 Ext. Shakeproof.....	1
43	107341	Retainer - Switch.....	1
*44	108964-6	Interlock Switch Assy.....	1
**45	108964-7	Interlock Switch Assy.....	1
46	67500-71	"O" Ring.....	1
*47	105377-1	Control Box Assy.....	1
48	SC-8-17	Mach. Screw 10-32 x 3/8 Rd. Hd.....	3
49	WL-7-12	Lock Washer 10 Ext. Shakeproof.....	3
50	106540	Speed Nut.....	3
51	NS-31-15	Lock Nut 10-24 (Nylon).....	7
52	294421	Reed Mounting Board Assy. (Incls. item 53).....	1
53	111964	Switch - Reed.....	3
54	111889	Relay - Detergent.....	2
55	112118	Clip - Relay Retainer.....	2

Mixer -Grinders, ML 19633 LH (Standard Hopper W/O Feed Opening), ML 19634 RH (Optional Hopper W/Feed Opening), ML 19635 LH (Optional Hopper W/Feed Opening) ML 19239 RH (Standard Hopper W/O Feed Opening), ML 19240 LH (Standard Hopper W/O Feed Opening), ML 19241 RH (Optional Hopper W/Feed Opening), ML 19242 LH (Optional Hopper W/Feed Opening), ML 19632 RH (Standard Hopper W/O Feed Opening) REPLACEMENT PARTS

CONTROL BOX AND INTERLOCK UNIT

ILLUS.	PART NO.	NAME OF PART	AMT.
PL-20508			
56	117495	Spacer.....	7
57	SD-29-14	Self-Tapping Screw 10-24 x 5/8 Pan Hd., Type F (Black).....	9
58	293158	Bracket (Air Actuated Switch).....	1
59	SD-8-18	Self-Tapping Screw 8-18 x 3/8 Phil. Bind Hd., Type B.....	2
60	87711-213-1	Switch - Air Actuated.....	1
61	290114-6	Cord & Plug Assy. (208 V., 60 Hz.) (Use with items 13, 15 & 20).....	1
62	117612-3	Cord & Plug Assy. (230 V., 60 Hz.) (Use with items 13, 16 & 20).....	1
63	117612-4	Cord & Plug Assy. (460 V., 60 Hz.) (Use with items 14, 17 & 20).....	1
	117659-3	Cord & Strain Relief Assy. (Incls. items 20 & 62).....	1
	117659-4	Cord & Strain Relief Assy. (Incls. items 20 & 63).....	1
	117659-7	Cord & Strain Relief Assy. (Incls. items 20 & 61).....	1

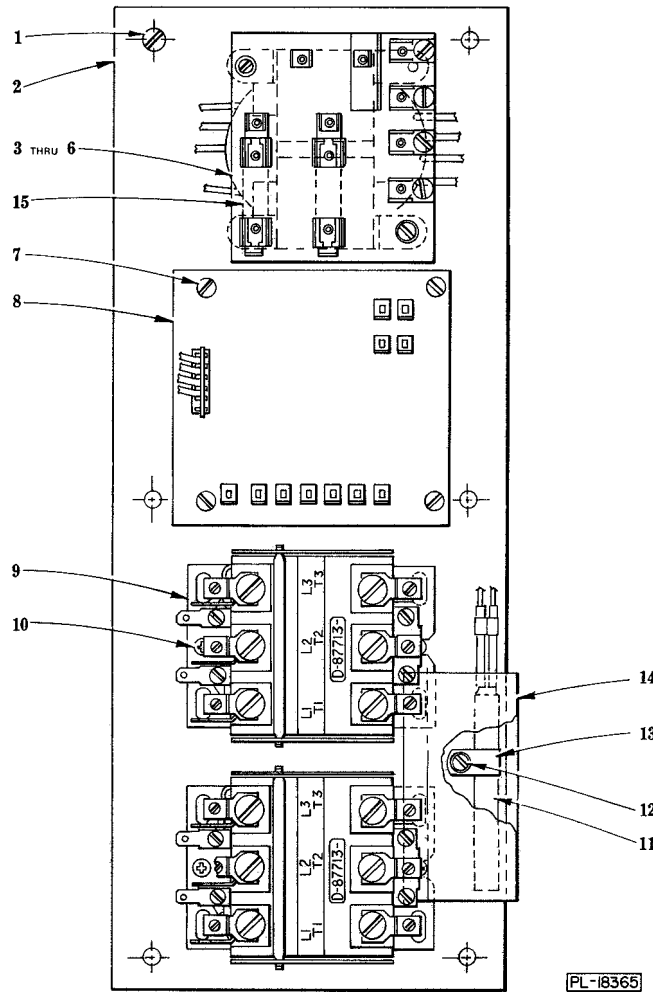
* R.H. Control Box.

** L.H. Control Box.

Mixer -Grinders, ML 19633 LH (Standard Hopper W/O Feed Opening), ML 19634 RH (Optional Hopper W/Feed Opening), ML 19635 LH (Optional Hopper W/Feed Opening) ML 19239 RH (Standard Hopper W/O Feed Opening), ML 19240 LH (Standard Hopper W/O Feed Opening), ML 19241 RH (Optional Hopper W/Feed Opening), ML 19242 LH (Optional Hopper W/Feed Opening), ML 19632 RH (Standard Hopper W/O Feed Opening) REPLACEMENT PARTS

NOTES

Mixer -Grinders, ML 19633 LH (Standard Hopper W/O Feed Opening), ML 19634 RH (Optional Hopper W/Feed Opening), ML 19635 LH (Optional Hopper W/Feed Opening) ML 19239 RH (Standard Hopper W/O Feed Opening), ML 19240 LH (Standard Hopper W/O Feed Opening), ML 19241 RH (Optional Hopper W/Feed Opening), ML 19242 LH (Optional Hopper W/Feed Opening), ML 19632 RH (Standard Hopper W/O Feed Opening) REPLACEMENT PARTS



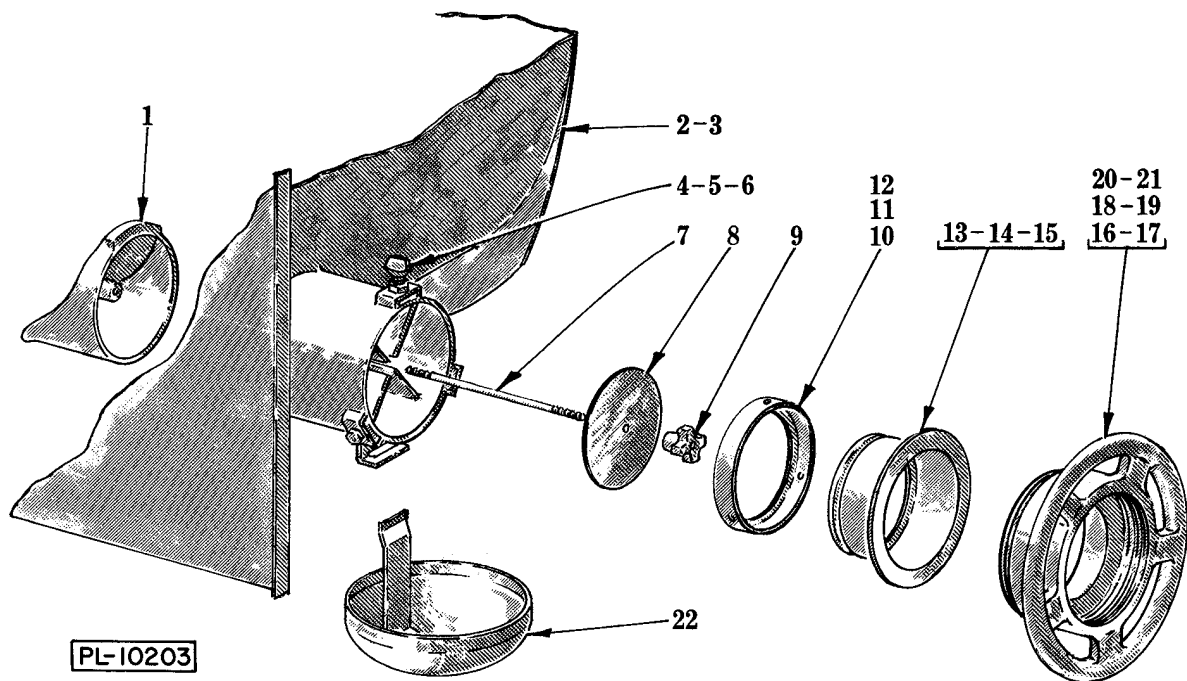
CONTROL PANEL UNIT

Mixer -Grinders, ML 19633 LH (Standard Hopper W/O Feed Opening), ML 19634 RH (Optional Hopper W/Feed Opening), ML 19635 LH (Optional Hopper W/Feed Opening) ML 19239 RH (Standard Hopper W/O Feed Opening), ML 19240 LH (Standard Hopper W/O Feed Opening), ML 19241 RH (Optional Hopper W/Feed Opening), ML 19242 LH (Optional Hopper W/Feed Opening), ML 19632 RH (Standard Hopper W/O Feed Opening) REPLACEMENT PARTS

CONTROL PANEL UNIT

ILLUS.	PART NO.	NAME OF PART	AMT.
1	SC-8-9	Mach. Screw 10-24 x 3/8 Rd. Hd.....	6
2	117559	Mounting Panel & Spacer Assy.....	1
3	117034-4	Power Input Board Assy. (60 Hz.) (Incls. item 5).....	1
4	117033	Power Input Board Assy. (50 Hz.) (Incls. item 5).....	1
5	FE-22-63	Fuse - Power Input Board (3 Amp.) (Not Shown).....	1
6	SC-9-43	Self-Tapping Screw 10-32 x 3/8 Phil. Pan Hd., Type F.....	2
7	SC-9-49	Mach. Screw 6-32 x 3/8 Rd. Hd.....	4
8	278328	Motor Protector Assy.....	1
9	87713-41-2	Contactora (1 15 V., 50/60 Hz.).....	2
10	SD-9-43	Self-Tapping Screw 10-32 x 3/8 Phil. Pan Hd., Type F.....	4
11	108202-4	Air Heater & Terminal Assy. (115 V., W/Pilot Circuit).....	1
12	SD-8-33	Self-Tapping Screw 8 X 5/16 Rd. Hd., Type B.....	1
13	108199-2	Clamp - Air Heater.....	1
14	108101	Shield - Heater.....	1
15	FE-16-29	Fuse (1 Amp.).....	2

Mixer -Grinders, ML 19633 LH (Standard Hopper W/O Feed Opening), ML 19634 RH (Optional Hopper W/Feed Opening), ML 19635 LH (Optional Hopper W/Feed Opening) ML 19239 RH (Standard Hopper W/O Feed Opening), ML 19240 LH (Standard Hopper W/O Feed Opening), ML 19241 RH (Optional Hopper W/Feed Opening), ML 19242 LH (Optional Hopper W/Feed Opening), ML 19632 RH (Standard Hopper W/O Feed Opening) REPLACEMENT PARTS



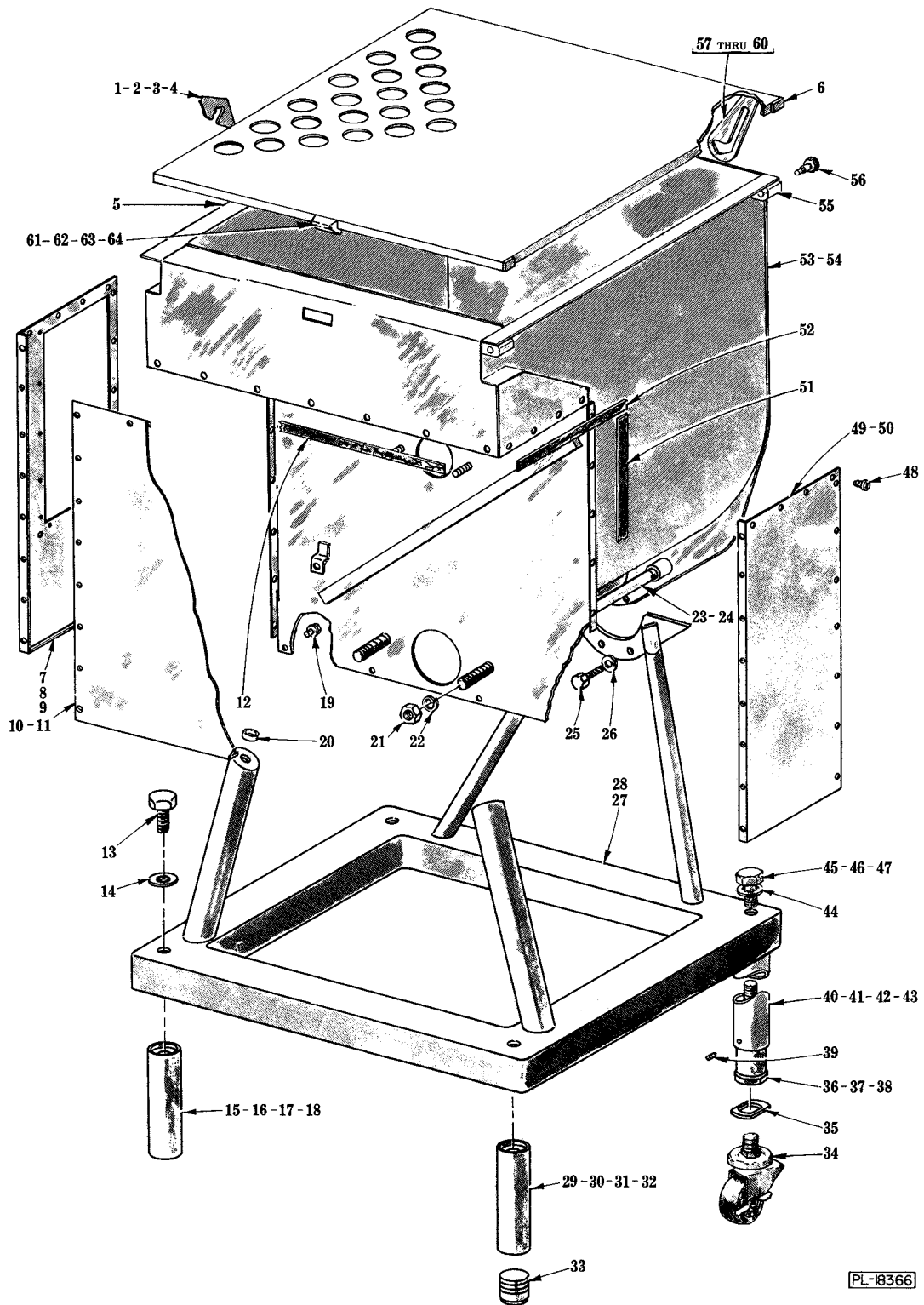
SIDE FEED UNIT

Mixer -Grinders, ML 19633 LH (Standard Hopper W/O Feed Opening), ML 19634 RH (Optional Hopper W/Feed Opening), ML 19635 LH (Optional Hopper W/Feed Opening) ML 19239 RH (Standard Hopper W/O Feed Opening), ML 19240 LH (Standard Hopper W/O Feed Opening), ML 19241 RH (Optional Hopper W/Feed Opening), ML 19242 LH (Optional Hopper W/Feed Opening), ML 19632 RH (Standard Hopper W/O Feed Opening) REPLACEMENT PARTS

SIDE FEED UNIT

ILLUS.	PART NO.	NAME OF PART	AMT.
PL-10203			
1	107092	Plug - Side Feed Hopper.....	1
2	107230-2	R.H. Hopper Assy. (R.H. Side Inlet Feed) (Incls. items 23 & 24 on Page 17).....	1
3	107229-2	L.H. Hopper Assy. (L.H. Side Inlet Feed) (Incls. items 23 & 24 on Page 17).....	1
4	108197-6	Thumb Screw (2" Lg.).....	3
5	108197-7	Thumb Screw (17/16" Lg.).....	3
6	108197-8	Thumb Screw (29/16" Lg.).....	3
7	107236	Rod - Tie.....	1
8	107237	Cap - Hopper Feed.....	1
9	292420	Knob Assy.....	1
10	86111	Retainer - Adapter (#56 Size).....	1
11	82153	Retainer - Adapter (#32 Size).....	1
12	82154	Retainer - Adapter (#52 Size).....	1
13	86110	Adapter (#56 Size).....	1
14	82146	Adapter (#32 Size).....	1
15	82149	Adapter (#52 Size).....	1
16	80879-1	Ring - Adapter Adj. (4532, 4046, 4346 & 4146 "V" Thread).....	1
17	80879-2	Ring - Adapter Adj. (4532, 4046 "Stud" Thread).....	1
18	81374-1	Ring - Adapter Adj. (#52F "V" Thread).....	1
19	81374-2	Ring - Adapter Adj. (#52-46 "Stub" Thread).....	1
20	109738-1	Ring - Adapter Adj. (#56 "Stub" Thread).....	1
21	109738-2	Ring - Adapter Adj. (#56 "V" Thread).....	1
22	81531	Drippings Cup Assy.....	1
	107238	Hopper Feed Plug Assy. (Incls.items 1, 7, 8 & 9).....	1
	109369-2	#56 Adapter Assy. (Incls. items 5, 10 & 13) (Non-Hobart).....	1
	109370-2	#52 Adapter Assy. (Incls. items 4, 12 & 15) (Non-Hobart).....	1
	109371-2	NLA - Obsolete--#32 Adapter Assy. (Incls. items 6, 11 & 14) (Non-Hobart).....	1

Mixer -Grinders, ML 19633 LH (Standard Hopper W/O Feed Opening), ML 19634 RH (Optional Hopper W/Feed Opening), ML 19635 LH (Optional Hopper W/Feed Opening) ML 19239 RH (Standard Hopper W/O Feed Opening), ML 19240 LH (Standard Hopper W/O Feed Opening), ML 19241 RH (Optional Hopper W/Feed Opening), ML 19242 LH (Optional Hopper W/Feed Opening), ML 19632 RH (Standard Hopper W/O Feed Opening) REPLACEMENT PARTS



HOPPER AND FRAME UNIT

Mixer -Grinders, ML 19633 LH (Standard Hopper W/O Feed Opening), ML 19634 RH (Optional Hopper W/Feed Opening), ML 19635 LH (Optional Hopper W/Feed Opening) ML 19239 RH (Standard Hopper W/O Feed Opening), ML 19240 LH (Standard Hopper W/O Feed Opening), ML 19241 RH (Optional Hopper W/Feed Opening), ML 19242 LH (Optional Hopper W/Feed Opening), ML 19632 RH (Standard Hopper W/O Feed Opening) REPLACEMENT PARTS

HOPPER AND FRAME UNIT

ILLUS.	PART NO.	NAME OF PART	AMT.
PL-18366			
1	106732-1	Catch - Guard.....	1
2	290563-1	Pin - Catch Pivot (Welded Part).....	1
3	NS-25-4	Acorn Nut 1/4-20.....	1
4	WS-22-6	Washer.....	1
5	106972-2	Pin - Catch (Welded Part).....	1
6	107541-1	NLA - Obsolete--Hopper Guard Assv. (Incls. items 1, 2, 3, 4, 61, 62, 63 & 64).....	1
7	108361-1	Side Panel & Gasket Assy. (W/Control Opening) (Incls. items 51 & 52).....	1
8	108361-2	Side Panel & Gasket Assy. (W/O Control Opening) (Incls. items 51 & 52) (Not Shown).....	1
9	SD-29-15	Self-Tapping Screw 10-24 x 5/8 Pan Hd., Type F.....	3
10	108362	Rear Panel & Gasket Assy. (Incls. item 12).....	1
11	SC-18-20	Self-Tapping Screw 10-24 x 5/8 Pan Hd. "Powerlok".....	21
12	527014	Gasket - Rear Panel.....	AR
13	SC-6-51	Cap Screw 5/8-11 x 1 1/2 Hex Hd.....	4
14	WL-8-37	Lock Washer 5/8 Int. Shakeproof.....	4
15	105347-1	Leg & Expansion Plug Assy. (7 1/2" Lg.).....	3
16	105347-2	Leg & Expansion Plug Assy. (11" Lg.) (Std.).....	3
17	105347-3	Leg & Expansion Plug Assy. (15 1/2" Lg.).....	3
18	105347-4	Leg & Expansion Plug Assy. (18 1/2" Lg.).....	3
19	SC-100-12	Mach. Screw 5/16-18 x 3/4 Hex Washer Hd.....	4
20	108765	Spacer - Rear Support.....	2
21	NS-13-43	Full Nut 5/8-11 Hex Fin.....	2
22	WL-4-18	Lock Washer 5/8 Light.....	2
23	106546-2	Rod - Tie.....	2
24	NS-15-17	Full Nut 5/8-11 Hex Fin.....	4
25	SC-62-59	Cap Screw 5/16-18 x 5/8 Hex Hd.....	2
26	WL-3-47	Lock Washer 5/16 Medium.....	2
27	105329-2	NLA - Obsolete--Frame & Support Leg Assy.....	1
28	106827-1	Caplug.....	4
29	105348-1	Adjustable Leg & Foot Assy. (7 1/2") (Incls. item 33).....	1
30	105348-2	Adjustable Leg & Foot Assy. (11" Lg.) (Std.) (Incls. item 33).....	1
31	105348-3	Adjustable Leg & Foot Assy. (15 1/2" Lg.) (Incls. item 33).....	1
32	105348-4	Adjustable Leg & Foot Assy. (18 1/2" Lg.) (Incls. item 33).....	1
33	89247	Foot - Leg.....	1
34	107993	Caster - Locking.....	4
35	80957	Washer.....	4
36	107242-1	Foot - Adj. (3 1/8" Lg.) (Use with item 40).....	4
37	107242-2	Foot - Adj. (4 9/16" Lg.) (Use with item 41).....	4
38	107244	Stud & Foot Assy. (Use with items 42 & 43).....	4
39	SC-46-4	Set Screw 8-32 x 3/16 Hdls., Cup Pt.....	4
40	107240-1	Leg & Anchor Nut Assy. (3 1/4" Lg.).....	4
41	107240-2	Leg & Anchor Nut Assy. (4 3/4" Lg.).....	4
42	107246-1	Leg & Anchor Nut Assy. (7 13/16" Lg.).....	4
43	107246-2	Leg & Anchor Nut Assy. (10 11/16" Lg.).....	4
44	WL-8-37	Lock Washer 5/8 Int. Shakeproof.....	4
45	SC-97-56	Cap Screw 5/8-11 x 3 1/2 Hex Hd. (Use with item 40).....	1
46	SC-97-57	Cap Screw 5/8-11 x 5 Hex Hd. (Use with item 41).....	4
47	SC-62-51	Cap Screw 5/8-11 x 1 1/2 Hex Hd. (Use with items 42 & 43).....	4
48	SD-29-15	Self-Tapping Screw 10-24 x 5/8 Pan Hd., Type F.....	11
49	108360-1	Side Panel & Gasket Assy. (W/Control Opening) (Incls. items 51 & 52) (Not Shown).....	1
50	108360-2	Side Panel & Gasket Assy. (W/O Control Opening) (Incls. items 51 & 52).....	1
51	527014	Gasket - Housing (Side Panel) (Long).....	AR
52	527014	Gasket - Housing (Side Panel) (Short).....	AR
53	105354-2	R.H. Hopper Assy. (Incls. items 23 & 24).....	1
54	106012-2	L.H. Hopper Assy. (Incls. items 23 & 24) (Not Shown).....	1
55	106545-2	Block - Hinge.....	2

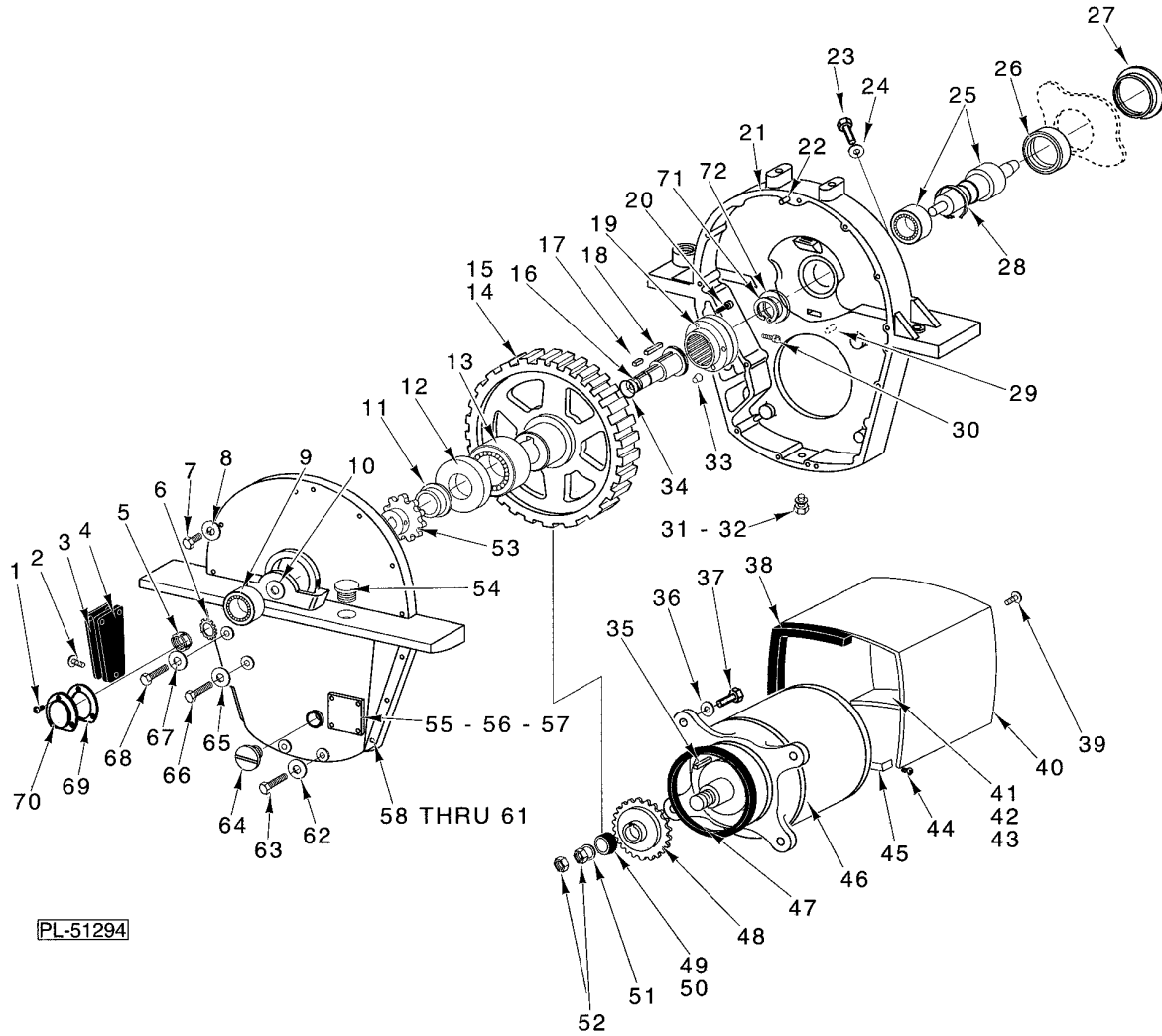
Mixer -Grinders, ML 19633 LH (Standard Hopper W/O Feed Opening), ML 19634 RH (Optional Hopper W/Feed Opening), ML 19635 LH (Optional Hopper W/Feed Opening) ML 19239 RH (Standard Hopper W/O Feed Opening), ML 19240 LH (Standard Hopper W/O Feed Opening), ML 19241 RH (Optional Hopper W/Feed Opening), ML 19242 LH (Optional Hopper W/Feed Opening), ML 19632 RH (Standard Hopper W/O Feed Opening) REPLACEMENT PARTS

HOPPER AND FRAME UNIT

ILLUS.	PART NO.	NAME OF PART	AMT.
PL-18366			
56	113357	Screw - Shoulder.....	2
57	120431-1	Latch (R.H. Mach.).....	1
58	120432	Screw - Latch.....	1
59	NS-25-4	Acorn Nut 1/4-20.....	1
60	108532	Pin - Latch (Welded Part).....	1
61	106817	Interlock Actuator Assy.....	1
62	291053	Stud 1/2" Drive.....	2
63	108629-1	Shim - Actuator (.065" Thk.).....	AR
64	108629-2	Shim - Actuator (.146" Thk.).....	AR
	107135-1	Adj. Leg & Caster Assy. (8" Lg. Min.) (Incls. items 34, 35, 36, 39, 40, 44 & 45).....	4
	107135-2	Adj. Leg & Caster Assy. (9 3/8" Lg. Min.) (Incls. items 34, 35, 37, 39, 41, 44 & 46).....	4
	107243-1	Adj. Leg & Caster Assy. (12 1/4" Lg. Min.) (Incls. items 34, 35, 38, 39, 42, 44 & 47).....	4
	107243-2	Adj. Leg & Caster Assy. (15 1/4" Lg. Min.) (Incls. items 34, 35, 38, 39, 43, 44 & 47).....	4

Mixer -Grinders, ML 19633 LH (Standard Hopper W/O Feed Opening), ML 19634 RH (Optional Hopper W/Feed Opening), ML 19635 LH (Optional Hopper W/Feed Opening) ML 19239 RH (Standard Hopper W/O Feed Opening), ML 19240 LH (Standard Hopper W/O Feed Opening), ML 19241 RH (Optional Hopper W/Feed Opening), ML 19242 LH (Optional Hopper W/Feed Opening), ML 19632 RH (Standard Hopper W/O Feed Opening) REPLACEMENT PARTS

NOTES



S/N 27-1010-427 and later shown. Prior to S/N 27-1010-427, or if your transmission is different than shown, consult your local Hobart Office, (TSB-498B).

MOTOR AND GEAR CASE

Mixer -Grinders, ML 19633 LH (Standard Hopper W/O Feed Opening), ML 19634 RH (Optional Hopper W/Feed Opening), ML 19635 LH (Optional Hopper W/Feed Opening) ML 19239 RH (Standard Hopper W/O Feed Opening), ML 19240 LH (Standard Hopper W/O Feed Opening), ML 19241 RH (Optional Hopper W/Feed Opening), ML 19242 LH (Optional Hopper W/Feed Opening), ML 19632 RH (Standard Hopper W/O Feed Opening) REPLACEMENT PARTS

MOTOR AND GEAR CASE

ILLUS. PL-51294	PART NO.	NAME OF PART	AMT.
1	SC-18-38	Mach. Screw 8-32 x 1/2 Pan Hd.....	3
2	SC-18-11	Mach. Screw 10-24 x 3/8 Pan Hd.....	6
3	120429	Cover - Junction Box.....	1
4	120430	Gasket - Junction Box Cover.....	1
5	NS-34-6	Lock Nut Brg. N.D. #N-05.....	1
6	WL-12-6	Lockwasher N.D.#W-05.....	1
7	SC-36-40	Cap Screw 5/16-18 x 1 1/4 Hex Hd.....	14
8	WL-3-47	Lockwasher 5/16 Medium.....	14
9	BB-21-33	Ball Bearing SGL. Row ANG.....	1
10	438374	Spacer - Drive Sprocket.....	1
11	105226	Spacer - Drive Sprocket.....	1
12	105355	Seal - Oil.....	1
13	BR-2-11	Roller Bearing - Cone & Cup Assy.....	1
14	105178-1	Gear - Driven (163T)(60 Hz.).....	1
15	105178-2	Gear - Driven (159T)(50 Hz.).....	1
16	438373	Sprocket Shaft Assy.....	1
17	109070-8	Key.....	1
18	109070-29	Key.....	1
19	438260	Clutch.....	1
20	SC-110-89	Cap Screw 5/16-18 X 1 Soc. Hd. "Special".....	4
21	106444	Gear Case Assy.....	1
22	11800-239	Dowel.....	2
23	SC-62-25	Cap Screw 5/8-11 x 2 1/4 Hex Hd.....	2
24	WL-8-37	Lockwasher 5/8 Int. Shakeproof.....	2
25	124628	Shaft & Bearing Assy.....	1
26	108591	Seal - Square Drive Shaft.....	1
27	105196	Seal - Outer Conveyor.....	1
28	108539	Spacer - Oil Seal.....	1
29	11800-62	Dowel.....	1
30	SC-92-31	Cap Screw 1/4-20 x 1 1/2 Soc. Fil. Hd.....	1
31	SC-36-93	Cap Screw 7/16-20 x 3/4 Hex Hd.....	1
32	WS-21-20	Washer.....	1
33	FP-28-17	Plug 3/4 Sq. Hd. Pipe.....	1
34	67500-47	"O" Ring.....	1
35	109070-28	Key.....	1
36	WL-4-6	Lockwasher 3/8 Medium.....	4
37	SC-62-58	Cap Screw 3/8-24 x 1 1/4 Hex Hd.....	4
38	102825-2	Seal - Motor Shroud.....	1
39	SC-18-4	Mach. Screw 10-24 x 1/2 Pan Hd.....	2
40	116905	Motor Shroud Assy.....	1
41	108365	Shroud Reinforcement Assy.....	1
42	SC-93-1	Mach. Screw 6-32 x 1 3/8 Pan Hd.....	2
43	123031	Spacer - Shroud Bracket.....	1
44	SC-21-25	Mach. Screw 10-24 x 3/4 Rd. Hd.....	2
45	123924	Shroud Support Bracket Assy.....	1
46	ML-19180	Motor (Give Elec. Spec.).....	1
47	67500-24	"O" Ring.....	1
48	105161	Flinger Assy.....	1
49	437421-1	Pinion - Motor (21T)(60 Hz.).....	1
50	437421-2	Pinion - Motor (25T)(50 Hz.).....	1
51	105218	Washer - Pinion.....	1
52	6566	Locknut.....	2
53	120207	Sprocket - Drive (11T).....	1
54	108963-2	Plug - Oil Fill.....	1
55	116464	Cover - Window.....	1

Mixer -Grinders, ML 19633 LH (Standard Hopper W/O Feed Opening), ML 19634 RH (Optional Hopper W/Feed Opening), ML 19635 LH (Optional Hopper W/Feed Opening) ML 19239 RH (Standard Hopper W/O Feed Opening), ML 19240 LH (Standard Hopper W/O Feed Opening), ML 19241 RH (Optional Hopper W/Feed Opening), ML 19242 LH (Optional Hopper W/Feed Opening), ML 19632 RH (Standard Hopper W/O Feed Opening) REPLACEMENT PARTS

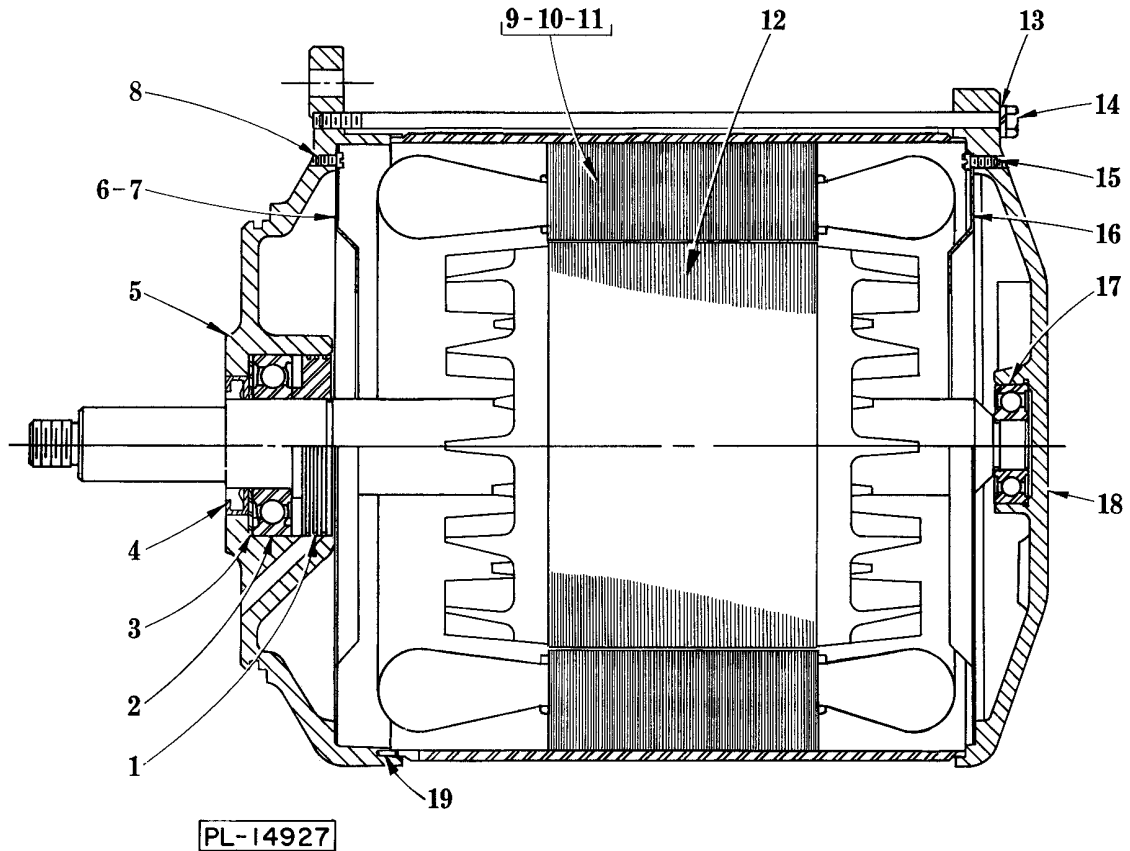
MOTOR AND GEAR CASE

ILLUS.	PART NO.	NAME OF PART	AMT.
PL-51294			
56	116465	Gasket - Window Cover.....	1
57	SD-36-39	Self-Tapping Screw 10-24 x 3/8 Truss Hd, Type TT.....	4
58	105243	Cover - Gear Case.....	1
59	118544-1	Lug - Solderless.....	1
60	SC-27-41	Mach. Screw 10-24 x 3/8 Rd. Hd.....	1
61	WL-10-6	Lockwasher 10 Ext. Shakeproof.....	1
62	WL-3-47	Lockwasher 5/16 Medium.....	2
63	SC-37-69	Cap Screw 5/16-18 x 1 3/4 Hex Hd.....	2
64	22793	Gauge - Oil Level.....	1
65	WL-3-47	Lockwasher 5/16 Medium.....	1
66	SC-62-28	Cap Screw 5/16-18 x 3 1/2 Hex Hd.....	1
67	WL-3-47	Lockwasher 5/16 Medium.....	1
68	SC-97-11	Cap Screw 5/16-18 x 4 Hex Hd.....	1
69	106823	Gasket - Bearing Cap.....	1
70	438279	Cap - Bearing (Metal).....	1
71	RR-6-14	Retaining Ring.....	1
72	290201	Spacer Retaining Ring 1.426 ID.....	1
	123034	Motor Shroud & Seal Assy. (Incls. items 38, 40, 42 & 43).....	1

Mixer -Grinders, ML 19633 LH (Standard Hopper W/O Feed Opening), ML 19634 RH (Optional Hopper W/Feed Opening), ML 19635 LH (Optional Hopper W/Feed Opening) ML 19239 RH (Standard Hopper W/O Feed Opening), ML 19240 LH (Standard Hopper W/O Feed Opening), ML 19241 RH (Optional Hopper W/Feed Opening), ML 19242 LH (Optional Hopper W/Feed Opening), ML 19632 RH (Standard Hopper W/O Feed Opening) REPLACEMENT PARTS

NOTES

Mixer -Grinders, ML 19633 LH (Standard Hopper W/O Feed Opening), ML 19634 RH (Optional Hopper W/Feed Opening), ML 19635 LH (Optional Hopper W/Feed Opening) ML 19239 RH (Standard Hopper W/O Feed Opening), ML 19240 LH (Standard Hopper W/O Feed Opening), ML 19241 RH (Optional Hopper W/Feed Opening), ML 19242 LH (Optional Hopper W/Feed Opening), ML 19632 RH (Standard Hopper W/O Feed Opening) REPLACEMENT PARTS



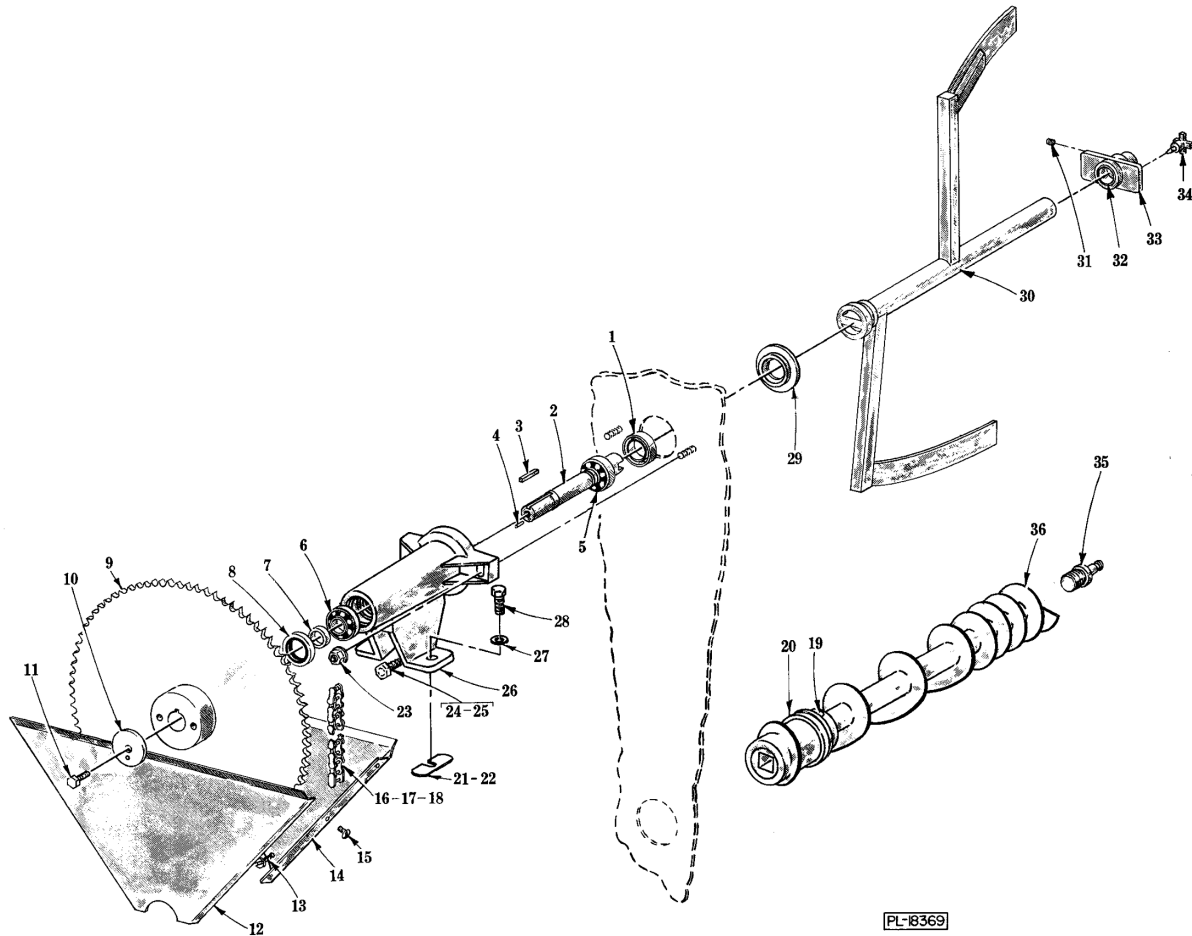
MOTOR PARTS

Mixer -Grinders, ML 19633 LH (Standard Hopper W/O Feed Opening), ML 19634 RH (Optional Hopper W/Feed Opening), ML 19635 LH (Optional Hopper W/Feed Opening) ML 19239 RH (Standard Hopper W/O Feed Opening), ML 19240 LH (Standard Hopper W/O Feed Opening), ML 19241 RH (Optional Hopper W/Feed Opening), ML 19242 LH (Optional Hopper W/Feed Opening), ML 19632 RH (Standard Hopper W/O Feed Opening) REPLACEMENT PARTS

MOTOR PARTS

ILLUS. PL-14927	PART NO.	NAME OF PART	AMT.
1	105152	Seal.....	1
2	BB-7-39	Ball Bearing - MRC #207SZZ.....	1
3	SL-3-11	Locking Spring - Wavy.....	1
4	275053	Seal.....	1
5	118100	Bracket - Bearing.....	1
6	89203-2	Shroud - Fan.....	1
7	79118	Bushing - Snap.....	1
8	SC-18-13	Mach. Screw 8-32 x 1/4 Pan Hd.....	4
9	65478-133-1	Stator Assy. (200 V., 60 Hz.).....	1
10	65478-133-2	Stator Assy. (230/460 V., 60 Hz.).....	1
11	65478-134-1	Stator Assy. (50 Hz.).....	1
12	15747-271	Rotor Assy.....	1
13	WL-3-38	Lock Washer 1/4 Medium.....	4
14	80977-5	Cap Screw 1/4-28 x 10 3/4 Hex Hd.....	4
15	SC-18-13	Mach. Screw 8-32 x 1/4 Pan Hd.....	4
16	89203-2	Shroud - Fan.....	1
17	BB-5-46	Ball Bearing - N.D. #77504.....	1
18	89188-1	Bracket - Bearing.....	1
19	RP-2-42	Rollpin 3/32 Dia. x 3/8 Lg.....	1

Mixer -Grinders, ML 19633 LH (Standard Hopper W/O Feed Opening), ML 19634 RH (Optional Hopper W/Feed Opening), ML 19635 LH (Optional Hopper W/Feed Opening) ML 19239 RH (Standard Hopper W/O Feed Opening), ML 19240 LH (Standard Hopper W/O Feed Opening), ML 19241 RH (Optional Hopper W/Feed Opening), ML 19242 LH (Optional Hopper W/Feed Opening), ML 19632 RH (Standard Hopper W/O Feed Opening) REPLACEMENT PARTS



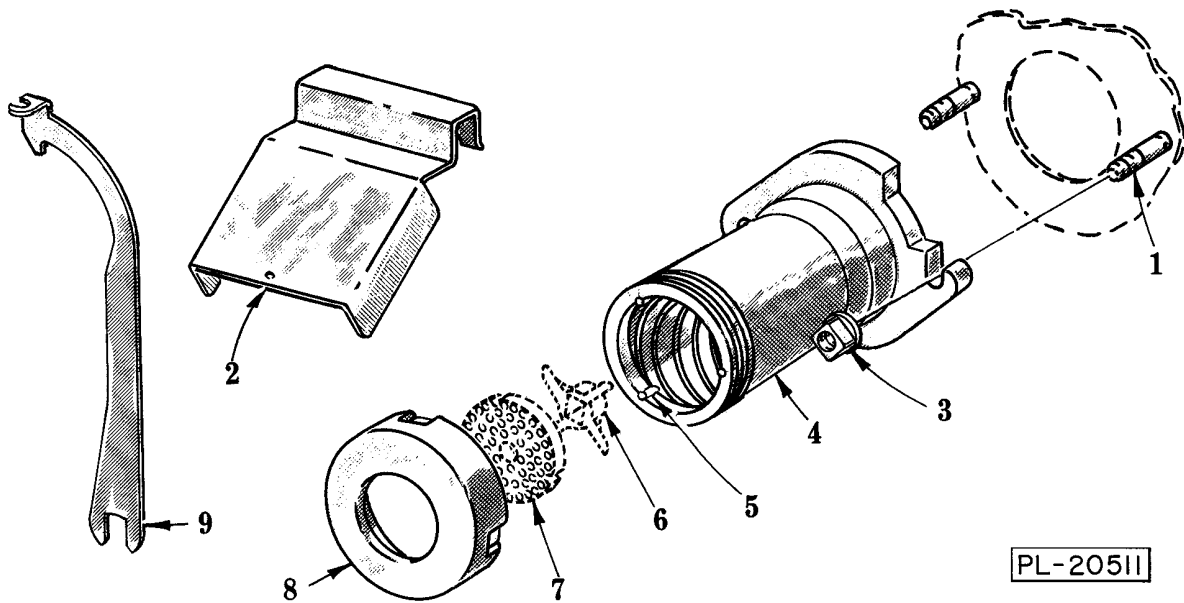
CONVEYOR AND MIXING ARM UNIT

Mixer -Grinders, ML 19633 LH (Standard Hopper W/O Feed Opening), ML 19634 RH (Optional Hopper W/Feed Opening), ML 19635 LH (Optional Hopper W/Feed Opening) ML 19239 RH (Standard Hopper W/O Feed Opening), ML 19240 LH (Standard Hopper W/O Feed Opening), ML 19241 RH (Optional Hopper W/Feed Opening), ML 19242 LH (Optional Hopper W/Feed Opening), ML 19632 RH (Standard Hopper W/O Feed Opening) REPLACEMENT PARTS

CONVEYOR AND MIXING ARM UNIT

ILLUS. PL-18369	PART NO.	NAME OF PART	AMT.
1	105359	Seal - Oil.....	1
2	116789	Mixing Arm Drive Shaft.....	1
3	109070-22	Key.....	1
4	RP-3-15	Rollpin 1/8 Dia. x 1 Lg.....	1
5	BR-2-27	Roller Bearing - Cone & Cup Assy.....	1
6	BR-2-27	Roller Bearing - Cone & Cup Assy.....	1
7	105386	Spacer - Sprocket.....	1
8	105359	Seal - Oil.....	1
9	117013	Sprocket - Driven (84T).....	1
10	105380	Washer - Sprocket Retaining.....	1
11	SC-62-48	Cap Screw 3/8-16 x 1 1/8 Hex Hd.....	1
12	107122	Panel - Oil Splash (Outside).....	1
13	SC-18-38	Mach. Screw 8-32 x 1/2 Pan Hd.....	2
14	107123	Panel - Oil Splash (inside).....	1
15	SD-19-15	Self-Tapping Screw 8 x 1/2 Pan Hd., Type B.....	4
16	105193-1	Chain - Mixing Drive (Incls. items 17 & 18).....	1
17	107540	Link - Offset (#50).....	AR
18	107539	Link - Connecting (#50).....	AR
19	106457	Pin - Shear.....	1
20	106299	Worm - Short.....	1
21	105781-3	Shim (.020" Thk.) (Yellow).....	AR
22	105781-4	Shim (.030" Thk.) (Coral).....	AR
23	NS-38-10	Lock Nut 3/8-16 Flange "Whiz-Lock".....	2
24	108951	Support Screw & Nut Assy.....	1
25	NS-17-25	Jam Nut 1/2-13 Hex Fin.....	2
26	105258	Carrier - Bearing.....	1
27	WL-4-6	Lock Washer 3/8 Medium.....	2
28	SC-62-42	Cap Screw 3/8-16 x 1 Hex Hd.....	2
29	105266	Seal - Outer (Mixing Arm).....	1
30	111030	Mixing Arm Assy.....	1
31	SC-116-87	Set Screw 10-24 x 1/4 Hdls., Cup Pt.....	1
32	110326	Bushing - Mixing Arm.....	1
33	110342	Bushing Retainer Assy. (Incls. items 31 & 32).....	1
34	106830	Thumb Screw Assy.....	1
35	110576	Stud - Plate.....	1
36	111840	Worm Assy. (Incls. items 19, 20 & 35).....	1
	111693	Mixing Arm Drive Shaft Assy. Unit (Incls. items 1 thru 6 & 8).....	1
	110565	Bearing Carrier Assy. (Incls. items 1, 2, 4, 5, 6, 7, 8 & 26).....	1

Mixer -Grinders, ML 19633 LH (Standard Hopper W/O Feed Opening), ML 19634 RH (Optional Hopper W/Feed Opening), ML 19635 LH (Optional Hopper W/Feed Opening) ML 19239 RH (Standard Hopper W/O Feed Opening), ML 19240 LH (Standard Hopper W/O Feed Opening), ML 19241 RH (Optional Hopper W/Feed Opening), ML 19242 LH (Optional Hopper W/Feed Opening), ML 19632 RH (Standard Hopper W/O Feed Opening) REPLACEMENT PARTS



#46 GRINDER UNIT

Mixer -Grinders, ML 19633 LH (Standard Hopper W/O Feed Opening), ML 19634 RH (Optional Hopper W/Feed Opening), ML 19635 LH (Optional Hopper W/Feed Opening) ML 19239 RH (Standard Hopper W/O Feed Opening), ML 19240 LH (Standard Hopper W/O Feed Opening), ML 19241 RH (Optional Hopper W/Feed Opening), ML 19242 LH (Optional Hopper W/Feed Opening), ML 19632 RH (Standard Hopper W/O Feed Opening) REPLACEMENT PARTS

#46 GRINDER UNIT

ILLUS.	PART NO.	NAME OF PART	AMT.
PL-20511			
1	118266	Stud - Cylinder.....	2
2	292953	Deflector - Meat.....	1
3	69862	Nut - Cylinder.....	2
4	111700	Grinder Cylinder Assy. (Incls. item 5).....	1
5	105806	Pin - Plate.....	3
8	00-873697	Ring - Adjusting.....	1
9	88187	Wrench - Spanner (#46).....	1

Mixer -Grinders, ML 19633 LH (Standard Hopper W/O Feed Opening), ML 19634 RH (Optional Hopper W/Feed Opening), ML 19635 LH (Optional Hopper W/Feed Opening) ML 19239 RH (Standard Hopper W/O Feed Opening), ML 19240 LH (Standard Hopper W/O Feed Opening), ML 19241 RH (Optional Hopper W/Feed Opening), ML 19242 LH (Optional Hopper W/Feed Opening), ML 19632 RH (Standard Hopper W/O Feed Opening) REPLACEMENT PARTS
