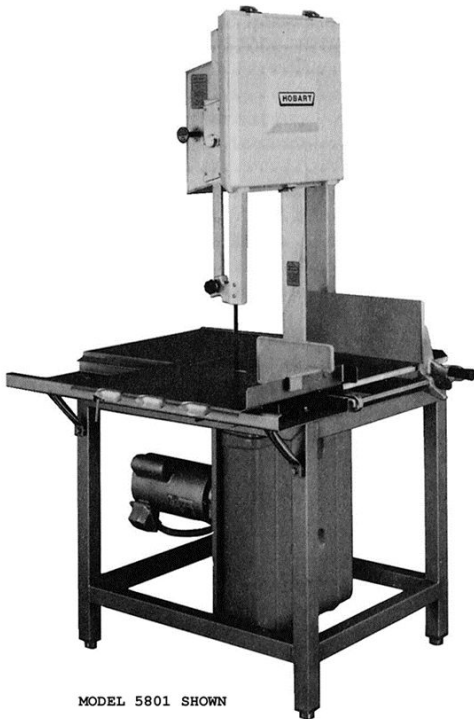




# CATALOG OF REPLACEMENT PARTS

## 5801 Meat Saw

ML-38674

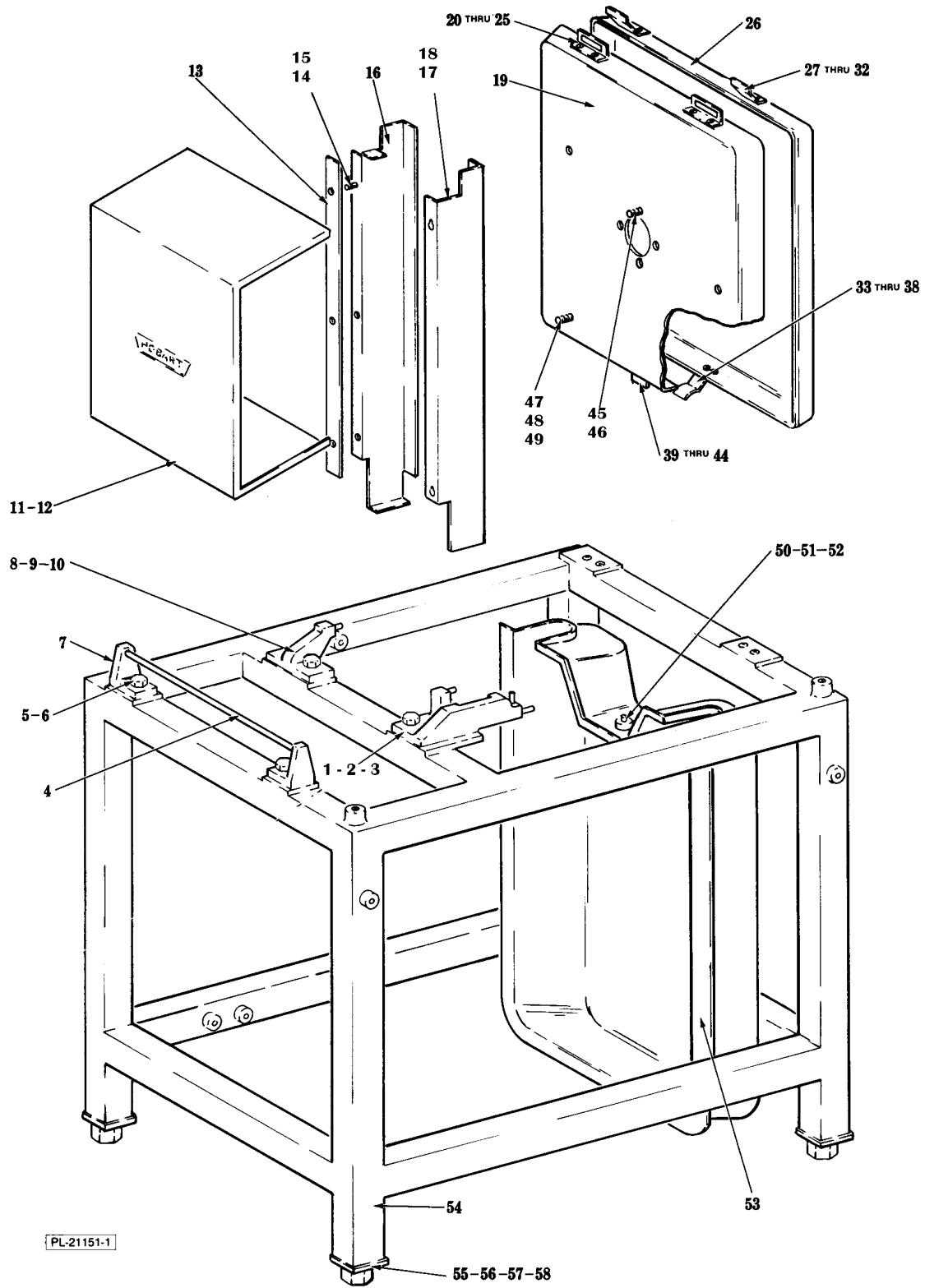


MODEL 5801 SHOWN



**Table of Contents**

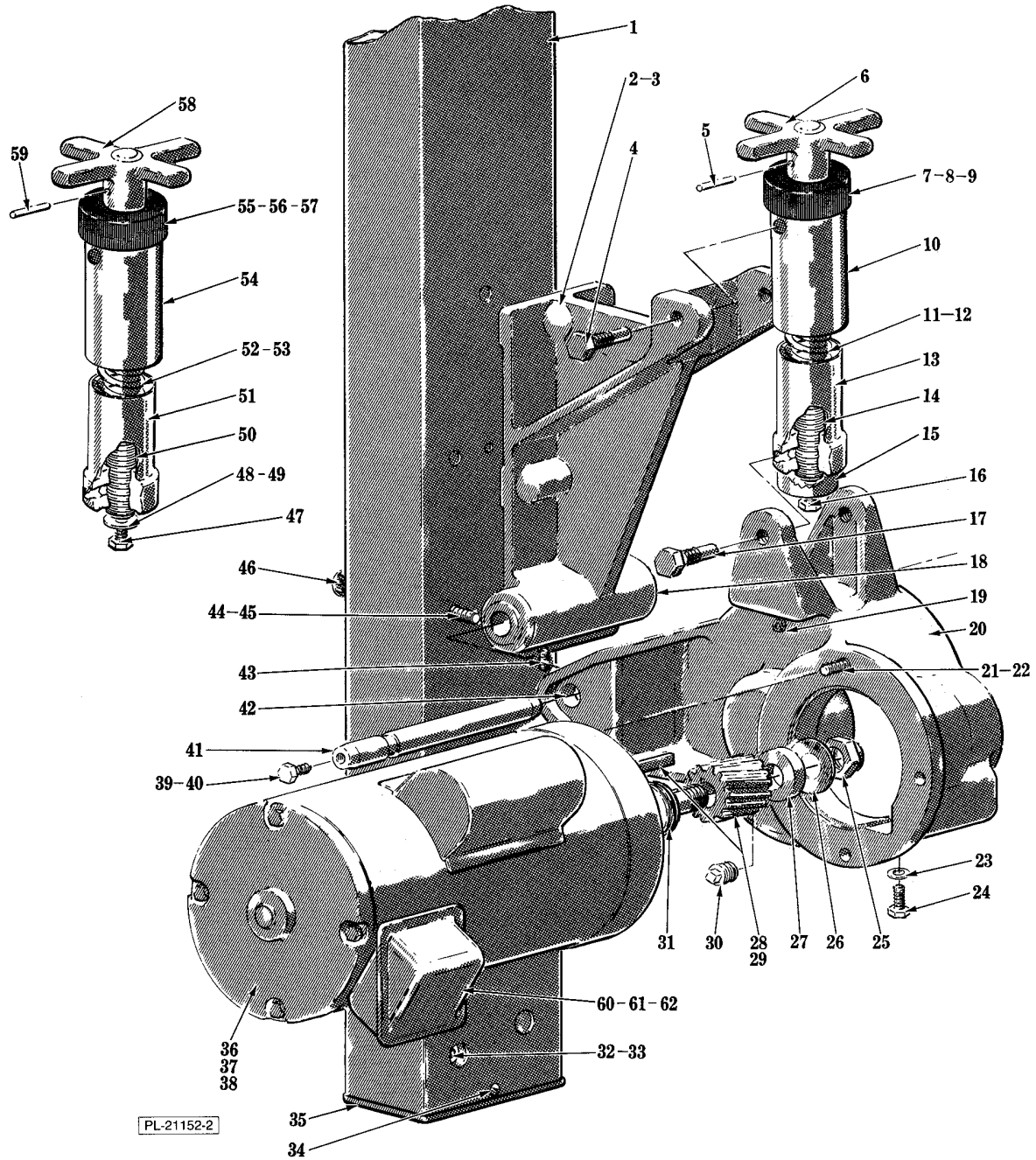
5	FRAME AND COVER
7	DRIVE AND TENSION ADJUSTMENT UNIT
11	LOWER PULLEY UNIT
13	UPPER BEARING CARRIER UNIT
15	TABLES AND CARRIAGE UNIT
17	UPPER GUIDE UNIT
19	LOWER WIPER UNIT
21	ELECTRICAL UNIT
25	GAUGE PLATE UNIT



**FRAME AND COVER**

## FRAME AND COVER

ILLUS.	PART NO.	NAME OF PART	AMT.
PL-21151-1			
1	291653	Lower Guide Support & Pin Assy.....	1
2	SC-41-31	Cap Screw 3/8-16 x 1 1/4 Hex Hd.....	2
3	WS-18-40	Washer.....	2
4	290758-1	Rod - Anchor (Left Table).....	1
5	SC-41-31	Cap Screw 3/8-16 x 1 1/4 Hex Hd.....	2
6	WS-18-40	Washer.....	2
7	290751	Support - Left Table.....	2
8	290752	Table Lock & Pin Assy.....	1
9	SC-41-31	Cap Screw 3/8-16 x 1 1/4 Hex Hd.....	2
10	WS-18-40	Washer.....	2
11	291532	Cover & Logo Assy.....	1
12	SC-21-14	Mach. Screw 8-32 x 3/8 Rd. Hd.....	4
13	291554	Spacer - Column Guard.....	1
14	SC-93-7	Mach. Screw 10-32 x 1/2 Pan Hd.....	3
15	WL-6-7	Lockwasher 10 Medium.....	3
16	291555	NLA - Obsolete--Guard Column.....	1
17	291556	Guard - Removable.....	1
18	290856	Anchor - Removable Guard.....	2
19	274998	Upper Baffle Assy (Incls. items 20 thru 25 & 39 thru 44).....	1
20	292314	Hinge - Upper Retainer.....	2
21	291761	Pad - Hinge.....	2
22	291763-1	Washer - Rubber.....	4
23	SC-98-4	Mach. Screw 6-32 x 5/8 Rd. hd.....	4
24	WS-28-3	Washer.....	4
25	NS-46-33	Acorn Nut 6-32 Hex.....	4
26	274997	Upper Cover Assy (Incls. items 27 thru 38).....	1
27	291503	Hinge - Upper Latch.....	2
28	291762	Pad - Latch.....	2
29	291763-1	Washer - Rubber.....	4
30	SC-98-4	Mach. Screw 6-32 x 5/8 Rd. hd.....	4
31	WS-28-3	Washer.....	4
32	NS-46-33	Acorn Nut 6-32 Hex.....	4
33	291502	Clip - Latch.....	1
34	291759	Pad - Clip.....	1
35	291763-1	Washer - Rubber.....	2
36	SC-98-4	Mach. Screw 6-32 x 5/8 Rd. hd.....	2
37	WS-28-3	Washer.....	2
38	NS-46-33	Acorn Nut 6-32 Hex.....	2
39	291501	Clip - Retainer.....	1
40	291760	Pad - Clip.....	2
41	291763-1	Washer - Rubber.....	1
42	SC-98-4	Mach. Screw 6-32 x 5/8 Rd. hd.....	2
43	WS-28-3	Washer.....	2
44	NS-46-33	Acorn Nut 6-32 Hex.....	2
45	SC-53-15	Mach. Screw 5/16-18 x 1/2 Truss Hd. SST.....	4
46	WS-17-21	Washer.....	4
47	SC-41-50	Cap Screw 1/4-20 x 1/2 Hex Hd.....	4
48	WS-3-47	Washer.....	4
49	291763-2	Washer - Rubber.....	4
50	290860	Anchor - Lower Cover.....	1
51	SC-41-5	Cap Screw 1/4-20 x 5/8 Hex Hd.....	1
52	WS-3-47	Washer.....	1
53	435296	Lower Cover W/Molded Handle (Incls. items 50, 51 & 52).....	1
54	290886-2	NLA - Obsolete--Frame Assy. (5701D SST) (Incls. item 53).....	1
55	290748	Foot (Std.) (1" to 2 3/4" Adjustable Height).....	4
56	435792	Foot (2" to 4" Adjustable Height).....	4
57	295598	Adjustable Foot Assy (2" Adjustable Height) (Qty. of 4).....	1
58	295599	Adjustable Foot Assy (4" Adjustable Height) (Qty. of 4).....	1



**DRIVE AND TENSION ADJUSTMENT UNIT**

## DRIVE AND TENSION ADJUSTMENT UNIT

ILLUS.	PART NO.	NAME OF PART	AMT.
<b>PL-21152-2</b>			
1	291534	Column & Label Assy.....	1
2	292286	Transmission Support Assy (Incls. item 3).....	1
3	11800-118	Dowel.....	1
4	290832	Pivot - Tension Adjusting.....	2
5	RP-3-16	Roll Pin 3/16 X 1 Lg.....	1
6	292361	Knob - Tension Adjust.....	1
7	WS-29-37	Washer.....	2
8	BN-5-6	Needle Bearing - Torrington NTA-1018.....	1
9	292796	Bellows.....	1
10	435061	Bushing & Tube Assy.....	1
11	291594	Spring - Compression.....	1
12	291662	Washer - Slot.....	1
13	435062	Nut & Tube Assy.....	1
14	435060	Tension Shaft Assy.....	1
15	435058	Spacer - Tension.....	1
16	SC-41-1	Cap Screw 1/4-20 x 3/4 Hex Hd.....	1
17	290832	Pivot - Tension Adjusting.....	2
18	291859-1	Bushing 1/2 Lg.....	1
19	120971	Plug - Vent.....	1
20	291798	Gear Case Assy (Incls. items 19 & 42).....	1
21	SC-41-31	Cap Screw 3/8-16 x 1 1/4 Hex Hd.....	3
22	WL-19-9	Lockwasher 3/8 Extra Heavy.....	3
23	WS-21-20	Washer.....	1
24	SC-36-93	Cap Screw 7/16-20 x 3/4 Hex Hd.....	1
25	NS-46-29	Lock Nut 3/4-16 Flexlox.....	1
26	SL-5-2	Washer - Belleville.....	1
27	290866	Washer - Damper.....	1
28	290816	Pinion - Drive (14T).....	1
29	109070-8	Key.....	1
30	FP-28-8	Pipe Plug 3/8 Sq. Hd.....	1
31	SL-5-2	Washer - Belleville.....	6
32	SC-40-21	Cap Screw 3/8-16 x 7/8 Soc. Hd.....	4
33	WL-4-6	Lockwasher 3/8 Medium.....	4
34	SC-21-23	Mach. Screw 10-24 x 1/2 Rd. Hd.....	2
35	290813	Cover - Column.....	1
*36	291796-1	Motor 60 Hz. 3 Ph.....	1
37	291796-2	Motor 50 Hz. 3 Ph.....	1
38	291796-3	Motor 60 Hz. 1 Ph.....	1
39	SC-41-55	Cap Screw 5/16-18 x 3/4 Hex Hd.....	1
40	WL-6-22	Lockwasher 5/16 Light SST.....	1
41	291860	Pin - Transmission.....	1
42	291859-1	Bushing 1/2 Lg.....	2
43	SC-47-72	Set Screw 1/4-20 x 3/8 Soc. Hdls. Cup Pt.....	1
44	SC-40-21	Cap Screw 3/8-16 x 7/8 Soc. Hd.....	5
45	WS-18-4	Washer.....	5
46	PB-2-26	Plug Button.....	8
47	SC-41-50	Cap Screw 1/4-20 x 1/2 Hex Hd.....	1
48	WS-3-47	Washer.....	1
49	WL-6-16	Lockwasher 1/4 Light.....	1
**50		Tension Shaft Assy.....	1
**51		Nut & Tube Assy.....	1
52	291594	Spring - Compression.....	1
53	291662	Washer - Slot.....	1
**54		Bushing & Tube Assy.....	1
55	WS-29-37	Washer.....	2

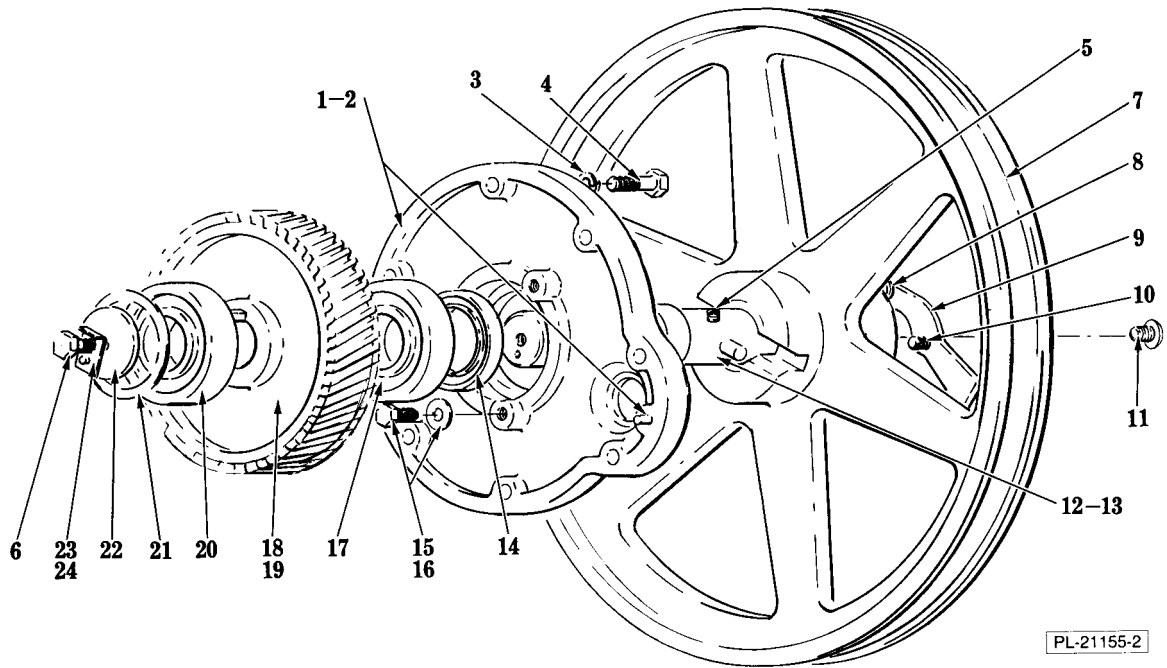
### DRIVE AND TENSION ADJUSTMENT UNIT

ILLUS.	PART NO.	NAME OF PART	AMT.
<b>PL-21152-2</b>			
56	BN-5-6	Needle Bearing - Torrington NTA-1018.....	1
57	292796	Bellows.....	1
58	292361	Knob - Tension Adjust.....	1
59	RP-3-16	Roll Pin 3/16 X 1 Lg.....	1
60	SC-27-29	Mach. Screw 8-32 x 3/8 Rd. Hd.....	AR
61	WL-10-1	Lockwasher 8 External Shakeproof.....	AR
62	NS-10-11	Mach. Nut 8-32 Hex.....	AR
	290820-5	Motor & Pinion Assy (60 Hz. 3 Ph.) (Incls. items 25 thru 29, 31 & 36).....	1
	290820-6	Motor & Pinion Assy (50 Hz. 3 Ph.) (Incls. items 25 thru 29, 31 & 37).....	1
	290820-7	Motor & Pinion Assy (60 Hz. 1 Ph.) (Incls. items 25 thru 29, 31 & 38).....	1
	00-873500	Tension Assy (Incls. Items 5 thru 16) Packaged.....	1

\* Obsolete Order 00-437301-00001 Motor Assy

\*\* Parts 50, 51 & 54 have been discontinued. Order 435063 to convert to new style.  
(Includes items 5 thru 16)

# NOTES



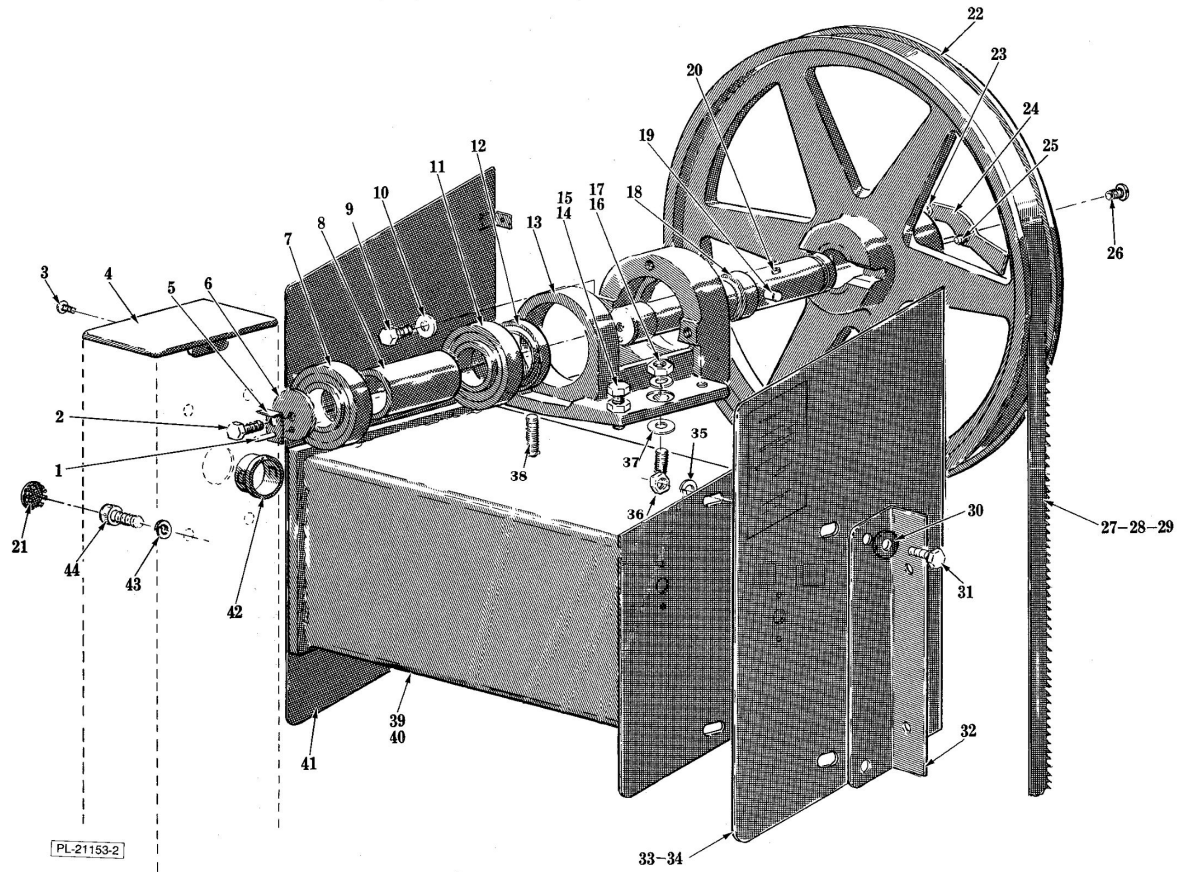
PL-21155-2

### LOWER PULLEY UNIT

## LOWER PULLEY UNIT

ILLUS.	PART NO.	NAME OF PART	AMT.
<b>PL-21155-2</b>			
1	290817	Gear Case Cover Assy (Incls. item 2).....	1
2	11800-91	Dowel.....	2
3	WL-6-22	Lockwasher 5/16 Light.....	7
4	SC-41-15	Cap Screw 5/16-18 x 1 1/4 Hex Hd.....	7
5	SC-119-20	Set Screw 1/4-20 x 1/2 Soc. Hdls., Flat Pt.....	1
6	SC-41-12	Cap Screw 5/16-18 x 7/8 Hex Hd.....	1
*7	ML-109653-0000Z	Pulley and Latch Assy. (Incls. Items 8, 9, & 10) (Model 6801 ML-134094) Pulley & Latch Assy (Incls. items 8, 9 & 10).....	1
8	79686	Catch - Friction.....	1
9	292213	Latch.....	1
10	20851	Screw - Latch.....	1
11	SD-5-49	Drive Screw 12 x 1/2 Rd. Hd., Type U.....	1
12	292278	Shaft - Lower.....	1
13	00-436447	Pin - Drive Pin - Drive.....	1
14	290805	Seal - Shaft.....	1
15	SC-36-24	Cap Screw 5/16-18 x 5/8 Hex Hd.....	3
16	WS-4-25	Washer.....	3
17	BB-8-14	Ball Bearing ND 77207.....	1
18	292276	Gear - Drive (58T).....	1
19	109070-9	Key.....	1
20	BB-8-14	Ball Bearing ND 77207.....	1
21	SL-3-11	Loading Spring ND 72.....	2
22	291973	Retainer - Shaft.....	1
23	291624	Retainer - Lock.....	1
24	RP-3-18	Roll Pin 1/8 x 7/8 Lg.....	1
	292298	Drive Unit - Lower (Incls. items 5, 6, 12, 13, 17, 18, 19, 20, 22, 23 & 24).....	1

\* Obsolete Order ML-109653-0000Z Saw Pulley 16"

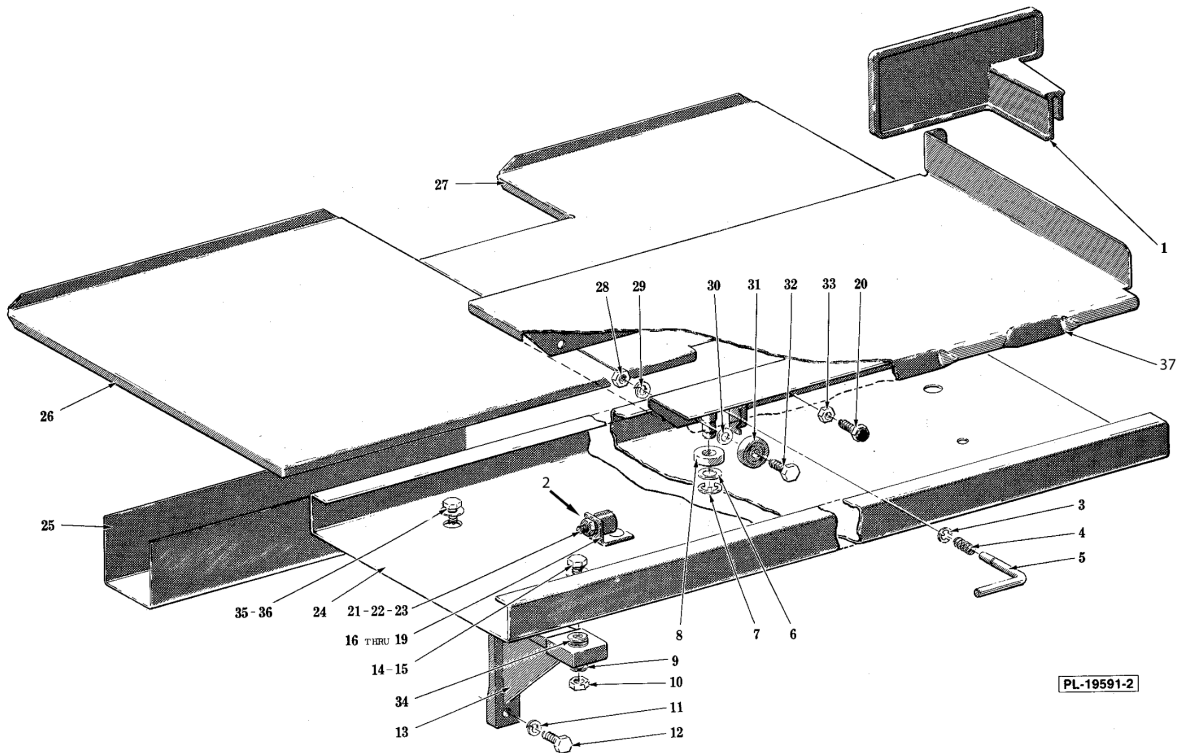


### UPPER BEARING CARRIER UNIT

## UPPER BEARING CARRIER UNIT

ILLUS.	PART NO.	NAME OF PART	AMT.
<b>PL-21153-2</b>			
1	RP-3-18	Roll Pin 1/8 x 7/8 Lg.....	1
2	SC-41-12	Cap Screw 5/16-18 x 7/8 Hex Hd.....	1
3	SC-21-23	Mach. Screw 10-24 x 1/2 Rd. Hd.....	1
4	290813	Cover - Column.....	1
5	291624	Retainer - Lock.....	1
6	291973	Retainer - Shaft.....	1
7	BB-8-14	Ball Bearing ND 77207.....	1
8	290806	Spacer - Bearing.....	1
9	SC-41-9	Cap Screw 5/16-18 x 1/2 Hex Hd.....	2
10	WS-17-1	Washer.....	2
11	BB-8-14	Ball Bearing ND 77207.....	1
12	290805	Seal - Shaft.....	1
13	291440	Housing - Bearing.....	1
14	SC-113-35	Cap Screw 5/16-18 x 1 3/4 Hex Hd.....	2
15	NS-17-8	Jam Nut 5/16-18 Hex.....	2
16	NS-13-25	Full Nut 3/8-16 Hex.....	2
17	WL-4-6	Lockwasher 3/8 Medium.....	2
18	292274	Shaft - Upper.....	1
19	00-436447	Pin - Drive.....	1
20	SC-119-20	Set Screw 1/4-20 x 1/2 Soc. Hdls., Flat Pt. (Use with item 18).....	1
21	PB-2-26	Plug Button.....	4
*22	ML-109653-0000Z	Pulley and Latch Assy. (Incls. Items 8, 9, & 10) (Model 6801 ML-134094) Pulley & Latch Assy (Incls. items 23, 24 & 25).....	1
23	79686	Catch - Friction.....	1
24	292213	Latch.....	1
25	20851	Screw - Latch.....	1
26	SD-5-49	Drive Screw 12 x 1/2 Rd. Hd., Type U.....	1
27	00-477016-00142	Blade - Saw (5/8 In. Wd. x 0.022 Thk.) (4T) (Model 6801 ML-134094) Blade - Meat Saw (.022" - 4T).....	1
28	00-477011-00142	Blade - Saw (5/8 In. Wd. x 0.022 Thk.) (3T) (Model 6801 ML-134094) Blade - Meat Saw (.022" - 3T).....	1
29	00-477021-00142	Blade - Meat Saw (.014") (3T) Blade - Meat Saw (.014" - 3T).....	1
30	WS-6-44	Washer.....	2
31	SC-41-28	Cap Screw 3/8-16 x 3/4 Hex Hd.....	2
32	290848	Angle - Upper Guide.....	1
33	291536	Front Trim Plate & Label Assy (60 Hz.).....	1
34	291560-1	NLA - Obsolete--Plate - Front Trims (5701).....	1
35	WL-6-27	Lockwasher 3/8 Light.....	2
36	NS-18-14	Jam Nut 3/8-16 Hex.....	2
37	WS-18-4	Washer.....	2
38	292663	Bearing Support Plate Assy.....	1
39	292661	Column Box Assy (60 Hz.).....	1
40	292660	Column Box Assy (50 Hz.).....	1
41	291570	Trim Plate Assy.....	1
42	FE-16-2	Bushing - Snap.....	1
43	WL-4-6	Lockwasher 3/8 Medium.....	4
44	SC-40-21	Cap Screw 3/8-16 x 7/8 Soc. Hd.....	4
	292299	Drive Unit - Upper (Incls. items 1, 2, 5, 6, 7, 8, 11, 18, 19, 20 & 26).....	1
	292275	Bearing Carrier Assy (Incls. items 1, 2, 5 thru 13, 18, 19, 20 & 26).....	1

\* Obsolete Order ML-109653-0000Z Saw Pulley 16"



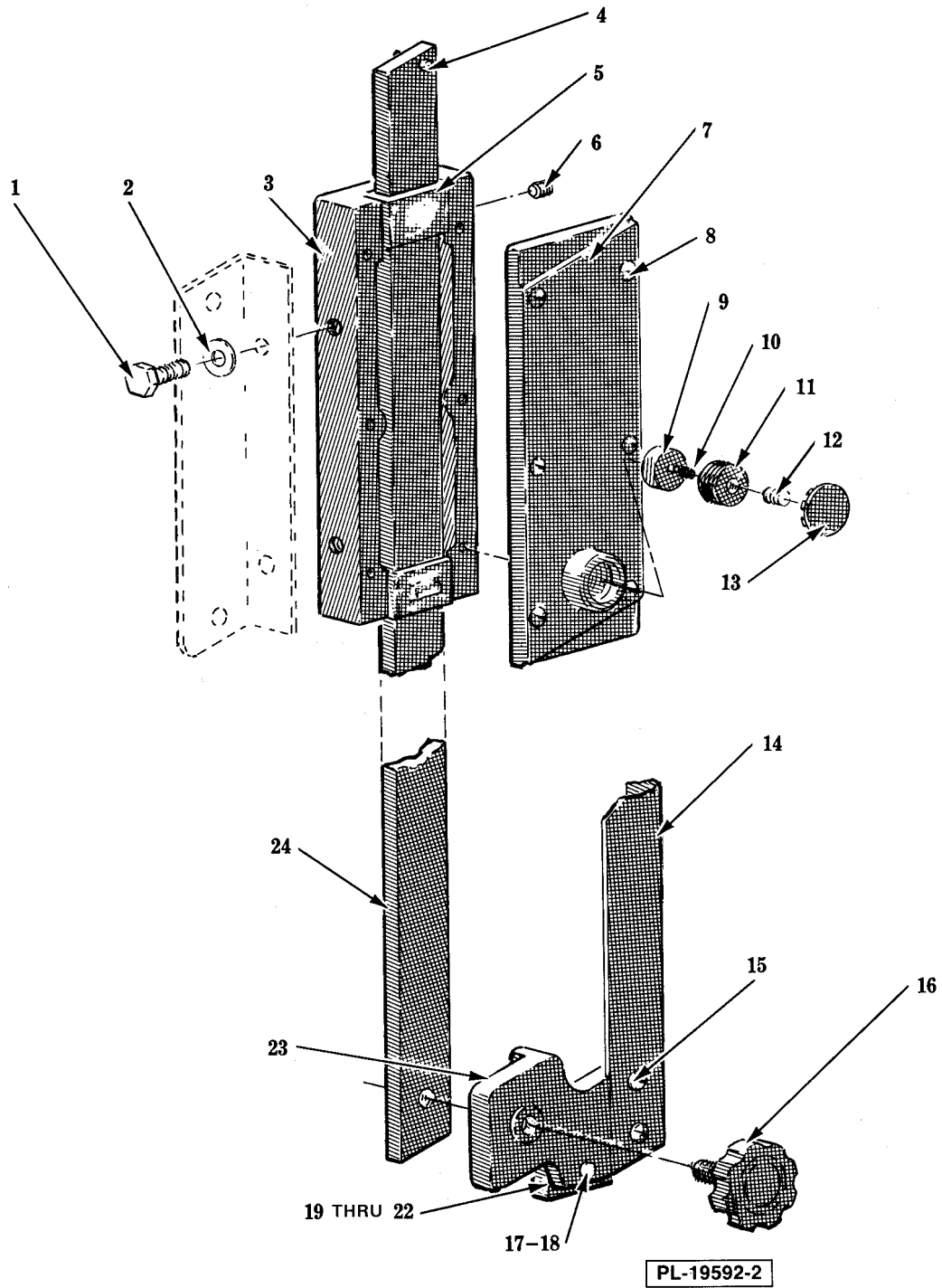
### TABLES AND CARRIAGE UNIT

## TABLES AND CARRIAGE UNIT

ILLUS. PL-19591-2	PART NO.	NAME OF PART	AMT.
1	291435	Pusher Plate.....	1
2	00-913102-00200	Kit, Bumper Stop Assembly (Incls. items 16, 21, 22 & 23).....	2
3	RR-11-9	Retaining Ring.....	2
4	290787	Spring - Carriage Lock.....	1
5	290795	Lever - Carriage Lock.....	1
6	WS-24-6	Washer.....	2
7	RR-10-12	Retaining Ring.....	2
8	290789	Roller - Carriage.....	2
9	WL-6-27	Lockwasher 3/8 Light.....	2
10	NS-18-14	Jam Nut 3/8-16 Hex.....	2
11	WL-6-27	Lockwasher 3/8 Light.....	2
12	SC-41-31	Cap Screw 3/8-16 x 1 1/4 Hex Hd.....	2
13	291958-2	Brace - Carriage Support.....	2
14	SC-41-34	Cap Screw 3/8-16 x 2 Hex Hd.....	2
15	WS-18-40	Washer.....	2
16	00-119827	Stop.....	1
17	SC-94-20	Carriage Bolt 5/16-18 x 1.....	2
18	70087	Washer - Spring.....	2
19	NS-31-29	Stop Nut 5/16-18 "Elastic".....	2
20	291675	Plug & Holder Assy.....	1
21	00-018682-00002	Bumper.....	1
22	WS-17-21	Washer.....	1
23	NS-15-11	Nut - 5/16-18, Hex.....	1
24	291558	Support - Carriage.....	1
25	290790	Tray - Scrap.....	1
26	290771	Left Table Assy.....	1
27	291654	Right Table Assy.....	1
28	NS-18-14	Jam Nut 3/8-16 Hex.....	8
29	WL-6-27	Lockwasher 3/8 Light.....	4
30	WS-18-30	Washer.....	4
31	BB-8-11	Ball Bearing Nice #SK-T 2198.....	4
32	SC-41-31	Cap Screw 3/8-16 x 1 1/4 Hex Hd.....	4
33	NS-15-11	Nut - 5/16-18, Hex.....	3
34	292284	Screw - Jack.....	2
35	SC-41-28	Cap Screw 3/8-16 x 3/4 Hex Hd.....	2
36	WS-6-44	Washer.....	2
37	290779	Carriage Assy.....	1
*	290778	Carriage Unit Assy (Incls. items 3 thru 8, 20 & 28 thru 33, and 37).....	1
**	00-437469	Tri-Rail System ONLY - Carriage Assy. Tri-Rail System.....	1
	292300	Support - Carriage (Incls. items 13, 14, 15, 28, 29, 32 & 34).....	1

\* Before Serial No. 27-1000530

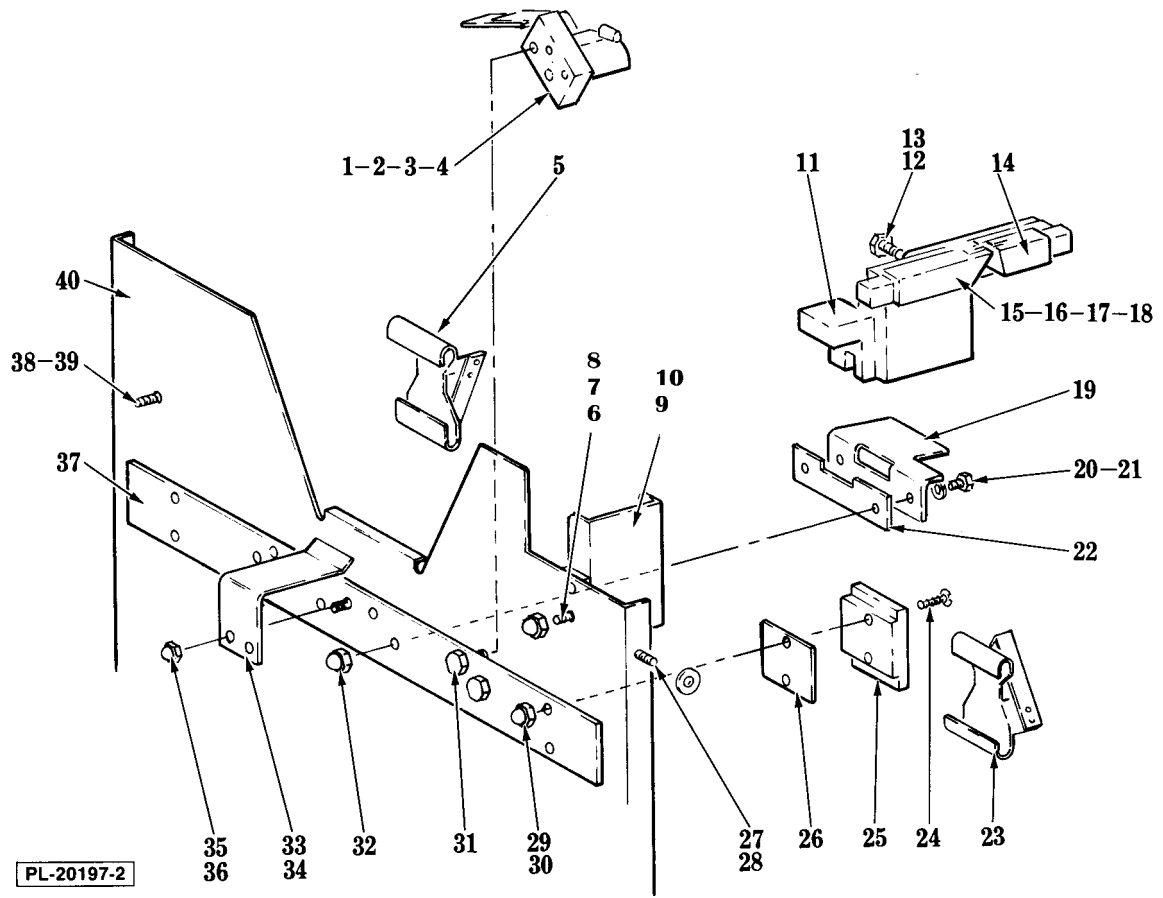
\*\* Starting Serial No. 27-1000530 See TSB 862



**UPPER GUIDE UNIT**

### UPPER GUIDE UNIT

ILLUS.	PART NO.	NAME OF PART	AMT.
<b>PL-19592-2</b>			
1	SC-41-28	Cap Screw 3/8-16 x 3/4 Hex Hd.....	2
2	WS-6-44	Washer.....	2
3	290846	Support - Guide Bar.....	1
4	PG-7-16	Groove Pin 3/16 Dia. x 3/4 Lg.....	1
5	290850	Insert - Guide Bar.....	4
6	SC-116-87	Set Screw 14-20 x 1/4 Soc. Hdls., Cup Pt.....	2
7	290845	Retainer - Guide Bar.....	1
8	SC-21-25	Mach. Screw 10-24 x 3/4 Rd. Hd.....	6
9	120141	Shoe - Slide Rod.....	1
10	75866	Spring - Slide Rod.....	1
11	290849	Screw - Carrier.....	1
12	SC-63-33	Set Screw 3/8-16 x 3/8 Hdls., Flat Pt.....	1
13	PB-2-26	Plug Button.....	1
14	291441	Guard - Front Blade.....	1
15	SC-53-5	Mach. Screw 10-24 x 3/8 Truss Hd.....	2
16	435958-2	Knob - Adjusting.....	1
17	SC-41-2	Cap Screw 1/4-20 x 1 Hex Hd. (Lower Guide).....	1
18	291579	Washer - Guide.....	1
19	290844-1	Guide - Saw Blade (.022" Blade).....	1
20	290844-2	Guide - Saw Blade (.014" Blade).....	1
21	290844-3	Guide - Saw Blade (.038" Blade).....	1
22	290844-4	Guide - Saw Blade (.020" Blade).....	1
23	290842	Holder - Upper Guide.....	1
24	291575	Upper Guide Support Bar Assy (Incls. item 4).....	1
	291442	Upper Guide Assy (Incls. items 14, 15 & 23).....	1



### LOWER WIPER UNIT

## LOWER WIPER UNIT

ILLUS.	PART NO.	NAME OF PART	AMT.
<b>PL-20197-2</b>			
1	291831	Block - Pulley Wiper.....	1
2	102399	Pulley Wiper Assy (Incls. items 3 & 4).....	1
3	123886	Wiper - Pulley.....	1
4	SC-53-1	Mach. Screw 10-24 x 1/4 Truss Hd.....	2
5	290798	Blade Wiper Assy.....	1
6	SC-41-50	Cap Screw 1/4-20 x 1/2 Hex Hd.....	2
7	WL-6-17	Lockwasher 1/4 Medium.....	2
8	NS-25-4	Acorn Nut 1/4-20.....	2
9	291809	Shield - Blade Guide.....	1
10	291810	Spacer - Blade Guide.....	1
11	291649-2	Holder - Lower Guide.....	1
12	291656	Cover - Guide.....	1
13	SC-116-26	Cap Screw 1/4-28 x 7/8 Hex Hd.....	2
14	291658	Guide - Plastic.....	1
15	291670-1	Guide - Saw Blade (.022" Blade).....	1
16	291670-2	Guide - Saw Blade (.014" Blade).....	1
17	291670-3	Guide - Saw Blade (.038" Blade).....	1
18	291670-4	Guide - Saw Blade (.020" Blade).....	1
19	292212	Support.....	1
20	SC-41-1	Mach. Screw 1/4-20 x 3/4 Hex Hd.....	2
21	WL-6-17	Lockwasher 1/4 Medium.....	2
22	292285	Spacer.....	1
23	290798	Blade Wiper Assy.....	1
24	SC-22-35	Mach. Screw 1/4-20 x 1 Flat Hd.....	4
25	290822	Support - Wiper.....	2
26	290855	Shim - Wiper Support.....	AR
27	SC-41-50	Cap Screw 1/4-20 x 1/2 Hex Hd.....	2
28	WS-3-49	Washer.....	2
29	NS-25-4	Acorn Nut 1/4-20.....	4
30	WS-3-49	Washer.....	4
31	SC-41-50	Cap Screw 1/4-20 x 1/2 Hex Hd.....	1
32	NS-25-4	Acorn Nut 1/4-20.....	2
33	290788	Clip - Cover.....	1
34	SC-112-77	Mach. Screw 10-24 x 7/16 Slotted Pan Hd. (SST).....	2
35	NS-25-1	Acorn Nut 10-24.....	2
36	WL-6-6	Lockwasher 10 Light.....	2
37	290821-2	NLA - Obsolete--Bar - Reinforcement.....	1
38	SC-41-50	Cap Screw 1/4-20 x 1/2 Hex Hd.....	4
39	WS-3-47	Washer.....	4
40	290851-2	Baffle - Lower Pulley.....	1
	291672-1	Holder & Guide Assy (Incls. items 11 thru 14 & 15).....	1
	291672-2	Holder & Guide Assy (Incls. items 11 thru 14 & 16).....	1
	291672-3	Holder & Guide Assy (Incls. items 11 thru 14 & 17).....	1
	291672-4	Holder & Guide Assy (Incls. items 11 thru 14 & 18).....	1



## ELECTRICAL UNIT

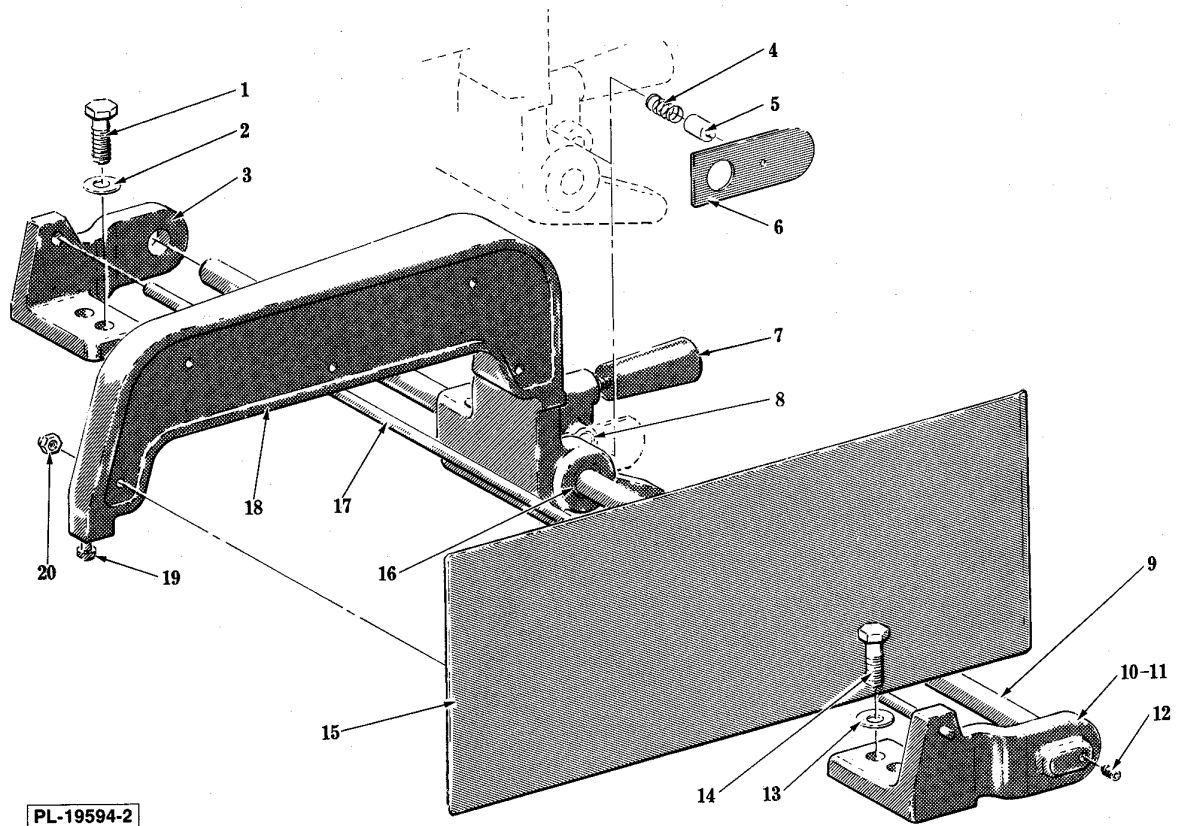
ILLUS.	PART NO.	NAME OF PART	AMT.
PL-21154-2			
1	SC-21-14	Mach. Screw 8-32 x 3/8 Rd. Hd.....	1
2	78752-9	Clamp - Cable.....	1
3	PC-5-8	Cotter Pin 3/32 x 5/8 Lg.....	1
4	121540-2	Actuator Switch.....	1
5	121547	Spring - Compression.....	1
6	121827	Ring - Locking.....	1
7	00-875567	Switch Assy.....	1
8	123241-1	Bracket - Switch.....	1
9	291475	Label - Start/Stop.....	1
10	290885	Knob - Switch.....	1
11	290882	Shaft - Switch.....	1
12	290883	Bushing - Switch Shaft.....	1
13	290889	Cable & Eylet Assy (Panel to Column).....	1
14	SD-15-20	Self-Tapping Screw 10-32 x 3/8 Phil Pan Hd., Type TT.....	2
15	WL-7-12	Lockwasher 10 External Shakeproof.....	2
16	SD-15-40	Self-Tapping Screw 8-32 x 3/8 Phil Pan Hd., Type TT.....	1
17	WL-7-7	Lockwasher 8 External Shakeproof.....	1
18	78752-9	Clamp - Cable.....	1
19	SD-15-40	Self-Tapping Screw 8-32 x 3/8 Phil Pan Hd., Type TT4.....	1
20	290839	Cover - Column Box.....	1
22	88196-6-1	Relay - Thermal Overload (1 Ph.) (W/Overload Protection).....	1
23	88196-9-1	Relay - Thermal Ovedoad (3 Ph.) (W/Overload Protection).....	1
24	SD-15-20	Self-Tapping Screw 10-32 x 3/8 Phil Pan Hd., Type TT.....	2
25	WL-7-12	Lockwasher 10 External Shakeproof.....	2
26	108199-1	Clamp - Air Heater.....	1
27	SD-15-40	Self-Tapping Screw 8-32 x 3/8 Phil Pan Hd., Type TT.....	2
28	122345-1	Heater Assy (460 V).....	1
29	122345-2	Heater Assy (200-230 V).....	1
30	121543	Shield - Heater.....	1
31	SC-19-33	Mach. Screw 8-32 x 1/2 Bind. Hd.....	2
32	WL-7-7	Lockwasher 8 External Shakeproof.....	2
33	NS-9-12	Mach. Nut 8-32 Hex.....	2
34	114707	Terminal & Mounting Board Assy (460 V).....	1
35	FE-19-48	Fuse (.8 Amp., 600 V).....	2
36	SC-10-36	Mach. Screw 10-24 x 5/8 Truss Hd.....	2
37	120907-1	Transformer (460 V).....	1
38	FE-7-7	Connector 90 Deg. "Sealtite" (1/2 Male Thd. x 1/2 Flex. Cnd.).....	1
39	SD-15-20	Self-Tapping Screw 10-32 x 3/8 Phil Pan Hd., Type TT.....	2
40	WL-7-12	Lockwasher 10 External Shakeproof.....	2
41	78752-9	Clamp - Cable.....	1
42	SD-15-40	Self-Tapping Screw 8-32 x 3/8 Phil Pan Hd., Type TT.....	1
43	SD-15-20	Self-Tapping Screw 10-32 x 3/8 Phil Pan Hd., Type TT.....	2
44	WL-7-12	Lockwasher 10 External Shakeproof.....	2
45	121926-1	Contacto Assy (3 Pole, 200-230 V).....	1
46	121926-2	Contacto Assy (3 Pole, 460 V).....	1
47	SD-12-35	Self-Tapping Screw 8-32 x 1/2 Phil Pan Hd., Type T.....	6
48	FE-7-5	Connector 45 Deg. "Sealtite" (1/2 Male Thd. x 1/2 Flex. Cnd.).....	1
49	77658-8	Conduit 1/2 x 19 (Waterproof) (Motor to Column).....	1
50	291600	Tube - Insulator.....	1
*51	291559	Cover - Column Box.....	1
*52	SD-12-35	Self-Tapping Screw 8-32 x 1/2 Phil Pan Hd., Type T.....	6
*53	294325-1-2	Mounting Foot - Terminal Block.....	1
*54	SD-15-40	Self-Tapping Screw 8-32 x 3/8 Phil Pan Hd., Type TT.....	2
*55	294325-2-2	Block - Terminal.....	AR
*56	78752-12	Clamp - Cable.....	1

## ELECTRICAL UNIT

ILLUS.	PART NO.	NAME OF PART	AMT.
<b>PL-21154-2</b>			
*57	SD-15-40	Self-Tapping Screw 8-32 x 3/8 Phil Pan Hd., Type TT.....	1
*58	290889	Cable & Eylet Assy (Panel to Column).....	1
*59	SD-15-20	Self-Tapping Screw 10-32 x 3/8 Phil Pan Hd., Type TT.....	1
*60	WL-7-12	Lockwasher 10 External Shakeproof.....	1
*61	118544-1	Lug - Solderless (Grounding).....	1
*62	65890-90	Terminal - Grounding.....	1
*63	WL-7-7	Lockwasher 8 External Shakeproof.....	AR
*64	SD-15-40	Self-Tapping Screw 8-32 x 3/8 Phil Pan Hd., Type TT.....	1
*65	87713-74-2	Contactor (220 V, 3 Ph/380 V, 3 N).....	1
*66	87713-74-3	Contactor (415 V, 3 N).....	1
*67	SC-22-76	Mach. Screw 6-32 x 5/8 Flat Hd.....	2
*68	WL-14-3	Lockwasher 6 External Shakeproof.....	2
*69	NS-11-7	Mach. Nut 6-32 Hex.....	2
*70	87711-231-2	Push Button (Start).....	1
*71	87711-230-2	Contact Block (Start).....	1
*72	87711-231-1	Push Button (Stop).....	1
*73	87711-230-1	Contact Block (Stop).....	1
*74	88196-12-5	Relay - Thermal Overload (380/415 V, 3 N) (W/Overload Protection).....	1
*75	88196-12-6	Relay - Thermal Ovedoad (22OV, 3 Ph) (W/Overload Protection).....	1
	291512	Switch & Bracket Assy (Incls. items 3 thru 8 & 11).....	1
	SC-8-9	Mach. Screw 10-24 x 3/8 Rd. Hd. (Not Shown) (Use with items 13 or 58).....	1
	295597	Cord & Plug Assy (3 Phase).....	1
	291512	Switch & Bracket Assy. (Incls. items 3 thru 8 & 11).....	1

\* Use with 50 Hz

# NOTES



PL-19594-2

### GAUGE PLATE UNIT

### GAUGE PLATE UNIT

ILLUS.	PART NO.	NAME OF PART	AMT.
	<b>PL-19594-2</b>		
1	SC-41-31	Cap Screw 3/8-16 x 1 1/4 Hex Hd.....	2
2	WS-18-40	Washer.....	2
3	290757	Support - Shaft & Rod (Rear).....	1
4	291933	Spring - Gauge Plate Lock.....	1
5	291932	Pin - Locking Lever.....	1
6	290769	Lever - Locking.....	1
7	70194	Handle - Gauge Plate.....	1
8	110544-10	Bushing - Gauge Plate Frame.....	1
9	290770	Shaft - Gauge Plate.....	1
10	290792	Front Shaft & Rod Support Assy (Incls. items 11 & 12).....	1
11	PG-6-11	Groove-Pin - Type D, 1/4 x 5/8.....	1
12	SC-64-27	Set Screw 5/16-18 x 1/2 Soc. Hdls., Cup Pt. "Nylok".....	1
13	WS-18-40	Washer.....	2
14	SC-41-31	Cap Screw 3/8-16 x 1 1/4 Hex Hd.....	2
15	291431	Plate and Stud Assy.....	1
16	110544-9	Bushing - Gauge Plate Frame.....	2
17	290758-2	Rod - Table Anchor (Right Table).....	1
18	291944	Gauge Plate Assy (Incls. items 8,15,16,19 & 20).....	1
19	290764	Button - Glide.....	1
20	NS-25-4	Acorn Nut 1/4-20.....	5
	292347	Gauge Plate Assy (Incls. items 4, 5, 6,15,18 & 19) (Packaged).....	1

