

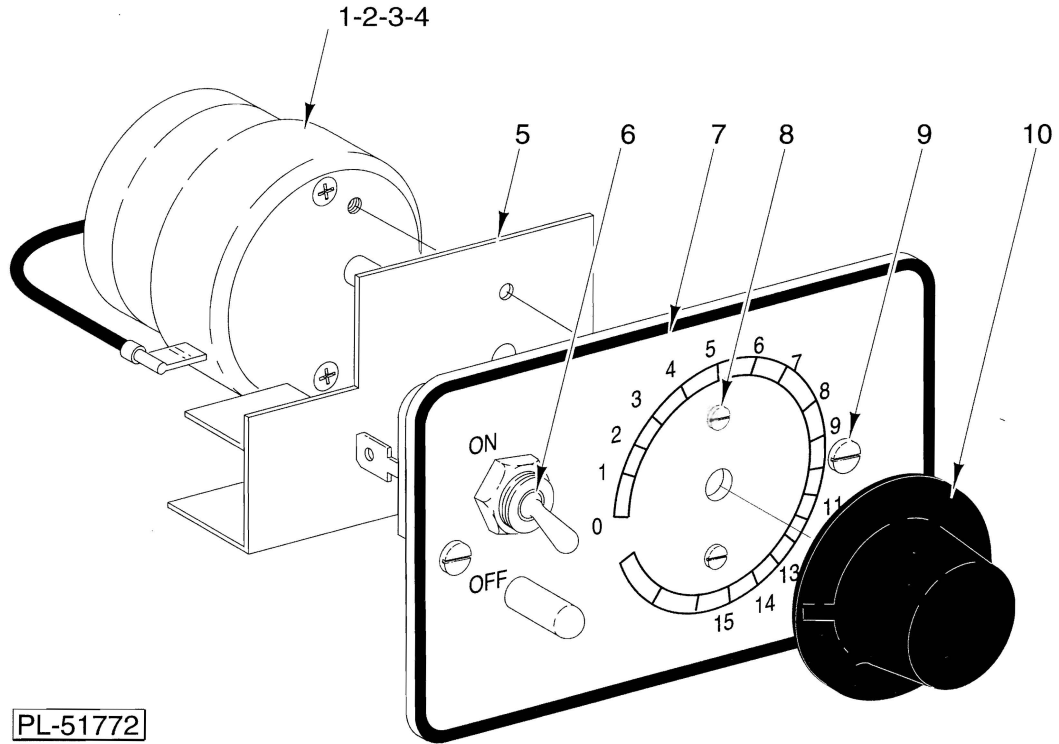


**CATALOG OF
REPLACEMENT PARTS**

**MODEL A120T
MIXER**

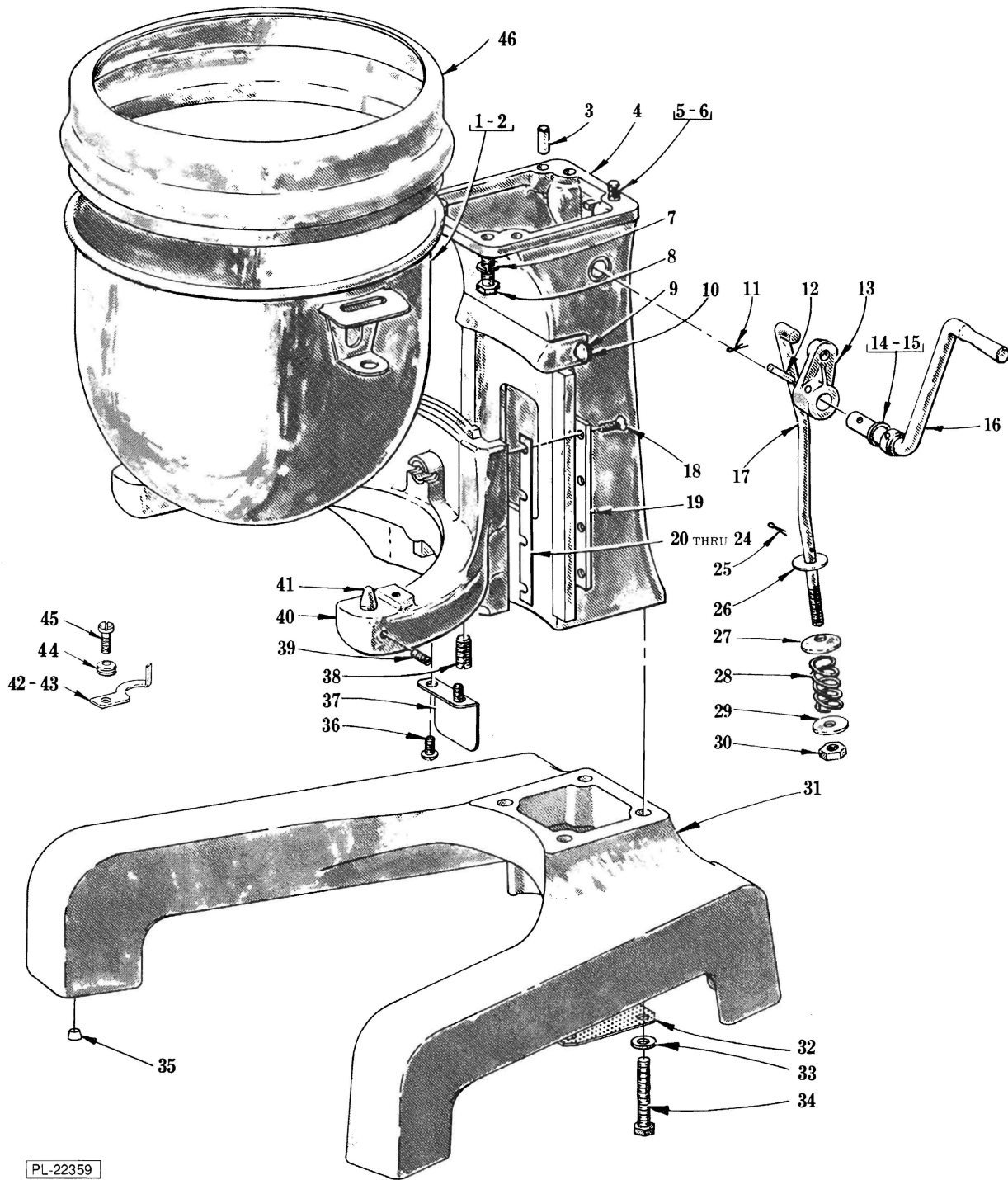
(INCLUDES MOTOR PARTS)

ML-104574 A120T



SWITCH & TIMER UNIT

ILLUS. PL-51772	PART NO.	NAME OF PART	AMT.
1	294650-4-5	Timer (115 V., 60 Hz.)	1
2	294650-4-6	Timer (230 V., 60 Hz.)	1
3	294650-4-7	Timer (115 V., 50 Hz.)	1
4	294650-4-8	Timer (220 V., 50 Hz.)	1
5	291746	Insulator - Switch	1
6	120388	Switch & Label Assy.	1
7	438537-1	Switch Plate & Pin Assy.	1
8	SC-13-7	Mach. Screw 5-40 x 1/4 Flat Hd.	2
9	123109	Screw 6-32 x 3/8 Serrated Hd.	2
10	291748	Knob - Timer	1

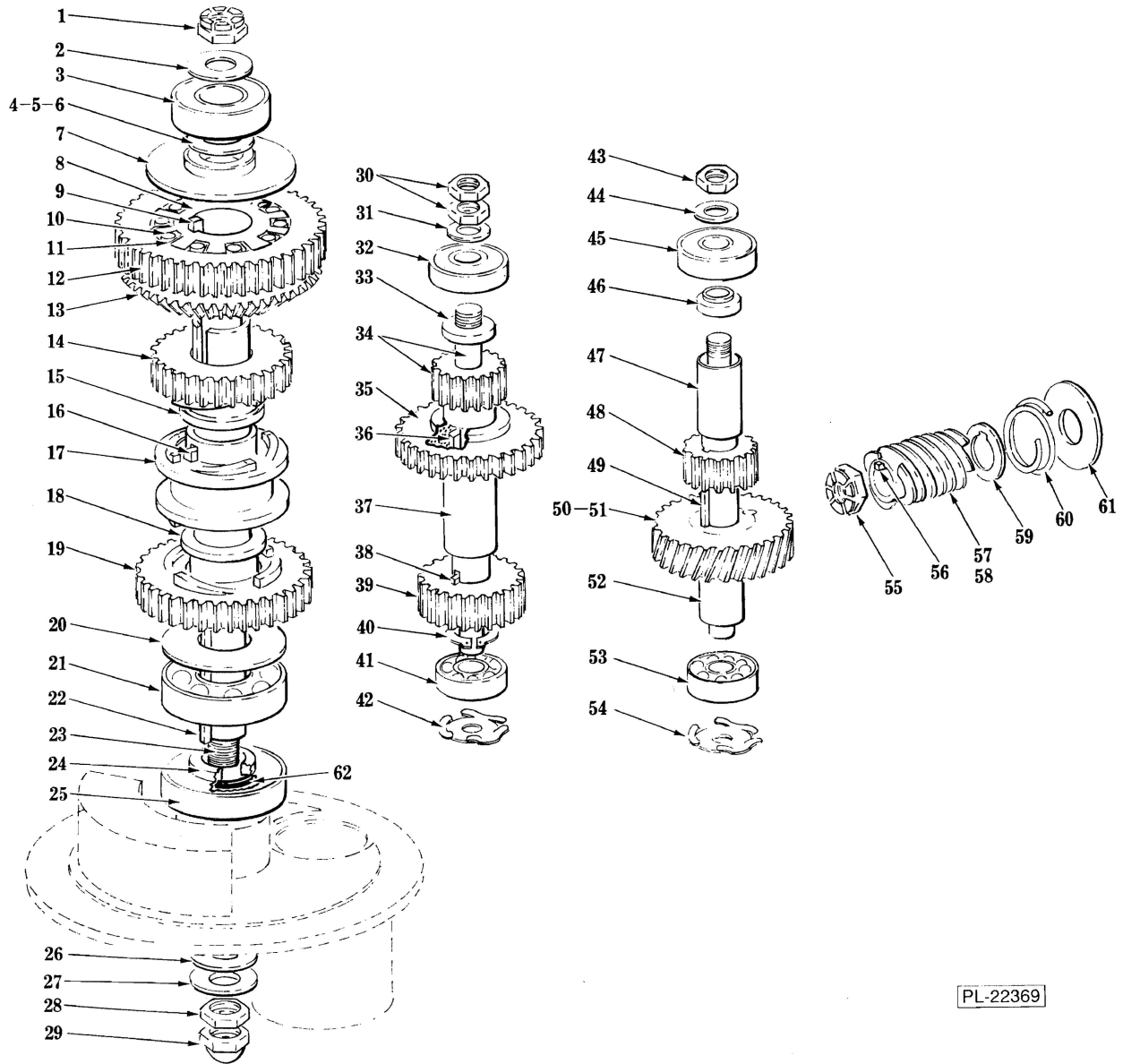


PL-22359

BASE, PEDESTAL AND BOWL UNIT

BASE, PEDESTAL AND BOWL UNIT

ILLUS. PL-22359	PART NO.	NAME OF PART	AMT.
1	275682	Bowl Assy. (12 qt.) (Standard)	1
2	295643	Bowl Assy. (12 qt.) (SST)	1
3	270776	Dowel	1
4	78634-2	Pedestal (Painted)	1
5	SC-11-95	Mach. Screw $\frac{5}{16}$ -18 x 1 Fil. Hd.	2
6	WL-3-43	Lockwasher $\frac{5}{16}$ Light	2
7	WL-3-43	Lockwasher $\frac{5}{16}$ Light	2
8	SC-36-27	Cap Screw $\frac{5}{16}$ -18 x 1 Hex Hd.	2
9	70641-11	Thumb Screw 8-32 "Special"	2
10	78506	Shield - Upper Splash	1
11	PC-3-55	Cotter Pin $\frac{1}{8}$ x $\frac{3}{4}$	1
12	PS-4-15	Spirol Pin $\frac{1}{4}$ Dia. x 1 $\frac{1}{2}$ Lg.	1
13	114430	Arm - Bowl Lift	1
14	WS-9-11	Washer (STL)	AR
15	WS-9-13	Washer (Fiber)	AR
16	114432	Bowl Lift Handle Assy.	1
17	12714	Rod - Bowl Lift	1
18	SC-13-49	Mach. Screw 10-24 x $\frac{5}{8}$ Flat Hd.	8
19	12715	Gib - Bowl Support	2
20	16388-1	Shim - Bowl Support (.003" Thk.)	AR
21	16388-4	Shim - Bowl Support (.009" Thk.)	AR
22	16388-5	Shim - Bowl Support (.005" Thk.)	AR
23	16388-6	Shim - Bowl Support (.0075" Thk.)	AR
24	16388-7	Shim - Bowl Support (.015" Thk.)	AR
25	PC-3-55	Cotter Pin $\frac{1}{8}$ x $\frac{3}{4}$	1
26	WS-6-33	Washer	AR
27	12745	Washer - Special	1
28	12782	Spring	1
29	WS-6-26	Washer	1
30	NS-36-15	Stop Nut $\frac{3}{8}$ -24 Hex "Special"	1
31	271915-3	Base (Painted)	1
32	108159	Screen - Air	1
33	WS-18-19	Washer	4
34	SC-97-53	Cap Screw $\frac{3}{8}$ -16 x 2 $\frac{1}{4}$ Hex Hd.	4
35	110717-1	Plug - Base (Plug for Foot Pads) (packed 8)	1
36	SC-60-56	Mach. Screw 10-32 x $\frac{5}{16}$ Rd Hd.	2
37	78505	Shield - Lower Splash	1
38	121625	Set Screw - Special	1
39	5014-1	Stud - Bowl Jacket Hook	2
40	24870	Bowl Support Assy. (Incls. items 20, 21, 24, 36, 37, 38 & 41)	1
41	6938-2	Pin - Bowl Locating	2
42	291444-1	Clamp - Bowl (L.H.)	1
43	291444-2	Bowl Clamp (R.H.)	1
44	291263	Washer - Belleville	6
45	274614	Screw - Pivot	2
46	438078	Splash Cover & Bowl Extension (12 qt.)	1
	111676	Shim (Use between Pedestal & Transmission Case)	AR

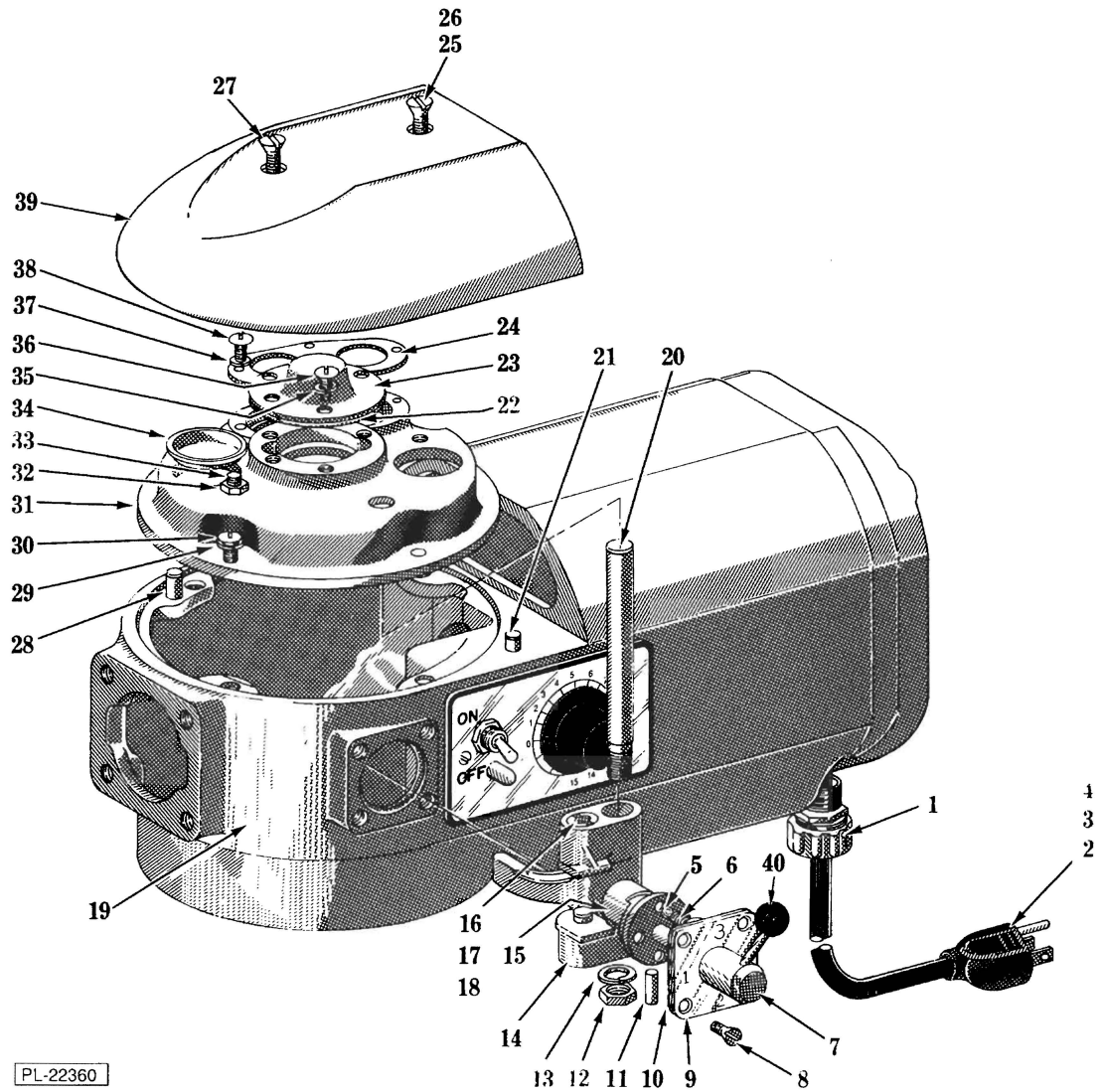


TRANSMISSION GEAR UNIT

PL-22369

TRANSMISSION GEAR UNIT

ILLUS. PL-22369	PART NO.	NAME OF PART	AMT.
1	NS-32-29	Stop Nut 1/2-20 "Flexloc"	1
2	WS-8-13	Washer - Retaining	1
3	BB-20-18	Ball Bearing - N.D. #77503	1
4	WS-10-18	Washer - Bearing Shim (.002" Thk.)	AR
5	WS-10-19	Washer - Bearing Shim (.003" Thk.)	AR
6	WS-10-20	Washer - Bearing Shim (.010" Thk.)	AR
7	107145	Spacer - Planetary Shaft	1
8	124730	Sleeve - Roller Clutch Drive	1
9	109070-2	Key	1
10	124729	Clutch - Roller	10
11	124732	Spring - Roller	10
12	124752	Gear - Slow Speed (46T)	1
13	124733	Gear - Bevel (46T)	1
14	124744	Gear - Clutch (29T)	1
15	12695	Bearing - Clutch Gear	1
16	12430-59	Key - Clutch Sleeve	2
17	70035-1	Sleeve - Clutch	1
18	12695	Bearing - Clutch Gear	1
19	124743	Gear - Lower Clutch (38T)	1
20	12723	Spacer - Lower	1
21	BB-20-6	Ball Bearing - N.D. #7504	1
22	12430-17	Key	1
23	124734	Shaft - Planetary	1
24	437342	Spacer - Bearing	1
25	114695	Seal - Oil	1
26	124946	Washer - Fiber	1
27	WS-24-1	Washer - Retaining (STL)	1
28	10928-2	Nut - Special	1
29	24715-3	Acorn Nut 1/2 - 20	1
30	12710	Nut - Retaining	2
31	WS-6-36	Washer - Retaining	1
32	BB-5-2	Ball Bearing - N.D. #7500	1
33	12744	Spacer - Upper	1
34	291236	Shaft - Transmission (15T)	1
35	124736	Gear (32T)	1
36	435297	Key	1
37	12697	Spacer - Lower	1
38	435297	Key	1
39	124760	Gear (23T)	1
40	RR-4-18	Retaining Ring	1
41	BB-5-1	Ball Bearing - N.D. #3200	1
42	SL-2-8	Spring - Preloading - N.D. #S-10-B	1
43	12710	Nut - Retaining	1
44	WS-6-36	Washer - Retaining	1
45	BB-5-2	Ball Bearing - N.D. #7500	1
46	124745	Washer	1
47	124765-1	Spacer - Gear	1
48	124748	Gear (15T)	1
49	12430-4	Key	1
50	124751-3	Worm Wheel & Bushing Assy. (60 Hz.)	1
51	124749-2	Worm Wheel & Bushing Assy. (50 Hz.)	1
52	291128	Shaft - Worm Wheel	1
53	BB-5-1	Ball Bearing - N.D. #3200	1
54	SL-2-8	Spring - Preloading - N.D. #S-10-B	1
55	NS-32-23	Lock Nut 7/16-20 "Flexloc"	1
56	12747	Key	1
57	291221	Worm (5T)(60 Hz.)	1
58	70407	Worm (5T)(50 Hz.)	1
59	12754	Washer	1
60	12757	Spring - Shock Absorber	1
61	12711	Washer - Shock Absorber Spring	1
62	67500-78	"O" Ring	1
	292799	Planetary Shaft Assy.(Incls. items 7, 8, 9, 12 thru 20 & 23)	1
	292800	Transmission Shaft Assy. (Incls. items 33 thru 40)	1
	292798-1	Worm Wheel Shaft Assy. (60Hz.)(Incls. items 46 thru 50 & 52)	1
	292798-2	Worm Wheel Shaft Assy. (50 Hz.)(Incls. items 46 thru 49, 51 & 52)	1

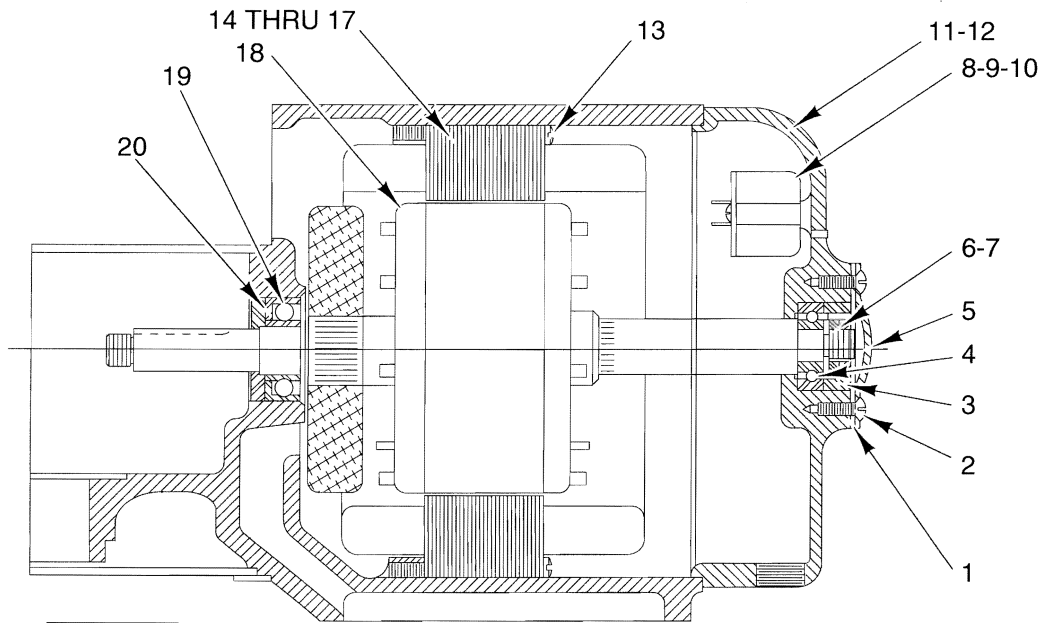


PL-22360

TRANSMISSION CASE AND SHIFTER UNIT

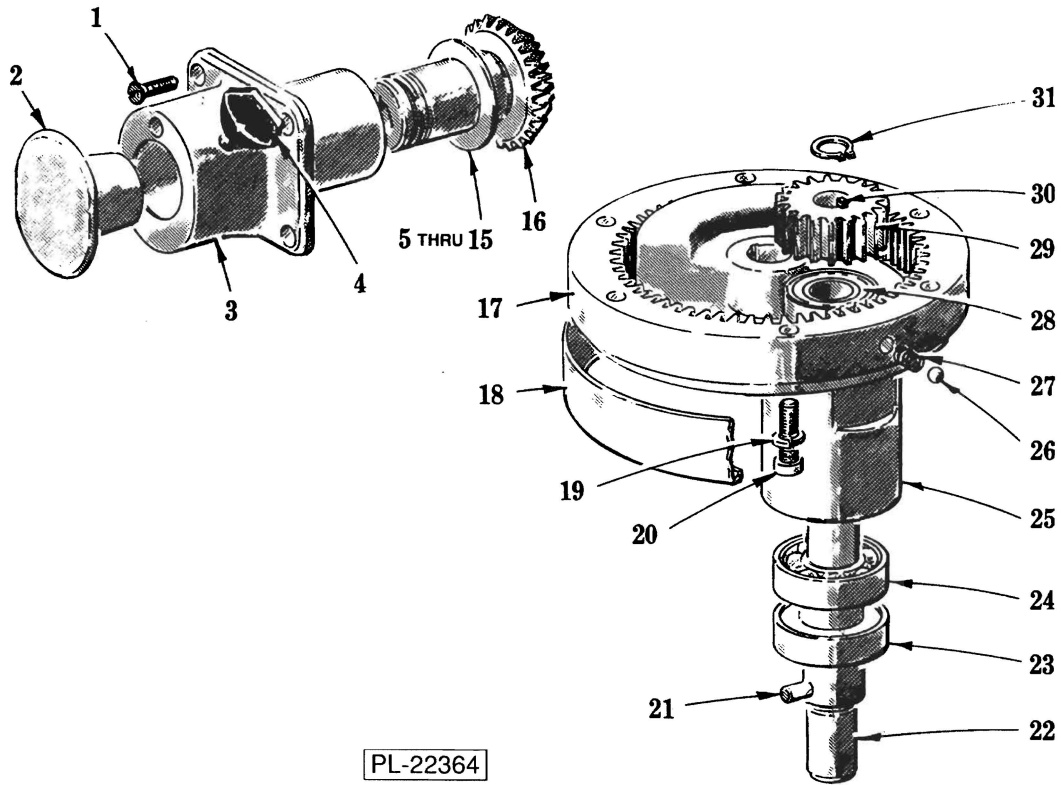
TRANSMISSION CASE AND SHIFTER UNIT

ILLUS. PL-22360	PART NO.	NAME OF PART	AMT.
1	FE-22-84	Connector - Strain Relief	1
2	117542-61	Cord & Plug Assy. (3 Cond., Under 150 V.)	1
3	117542-62	Cord & Plug Assy. (3 Cond., 200-250 V.)	1
4	117542-63	Cord Assy. (I.E.C.)	1
5	BA-2-9	Ball ¼ Dia.	2
6	111170	Spring - Detent	2
7	437339	Shifter Handle Assy. (Incls. Item 40)	1
8	SC-30-24	Mach. Screw 10-24 x ½ Oval Hd)	4
9	290115-1	Plate - Shifter Index	1
10	23946	Gasket - Shifter Index Plate	1
11	PS-3-8	Spirol Pin ½ Dia. x ¾ Lg.	1
12	NS-13-22	Full Nut ¾-16 Hex	1
13	WL-4-2	Lockwasher ¾ Light	1
14	13160	Yoke - Shifter	1
15	114506	Cam - Gear Shifter	1
16	12733	Plunger - Shifter Yoke	2
17	12734	Spring - Shifter Yoke	2
18	12732	Retainer - Shifter Yoke Spring	2
19	118039-2	Case - transmission (Incls. items 21 & 28)	1
20	12735	Rod - Shifter Guide	1
21	11800-61	Dowel	2
22	20395	Retainer - Bearing	1
23	20394-1	Cap - Bearing Retainer	1
24	12708	Retainer - Twin Bearing	1
25	NS-9-36	Mach. Nut 12-24 Hex	2
26	SC-15-57	Mach. Screw 12-24 x 1½ Oval Hd	1
27	SC-16-17	Mach. Screw 12-24 x 1¼ Oval Hd	1
28	11800-116	Dowel	1
29	WL-3-28	Lockwasher 12 Light	4
30	SC-119-7	Mach. Screw 12-24 x ¾ Hex Hd	4
31	67750	Transmission Shaft Support & Screw Assy. (Incls. items 32 & 33)	1
32	NS-9-36	Mach. Nut 12-24 Hex	1
33	SC-8-56	Mach. Screw 12-24 x ½ Rd. Hd	1
34	64871	Plug - Friction	2
35	WL-3-28	Lockwasher 12 Light	3
36	SC-8-48	Mach. Screw 12-24 x ½ Rd. Hd	3
37	WL-3-22	Lockwasher 10 Light	4
38	SC-18-1	Mach. Screw 10-24 x ¾ Pan Hd.	4
39	18231-1	Cover - Transmission Case	1
40	77401	Knob - Shifter Handle	1
	79999	Shifter Assy. (Incls. items 5, 6, 7, 9, 11 & 15)	1



MOTOR PARTS

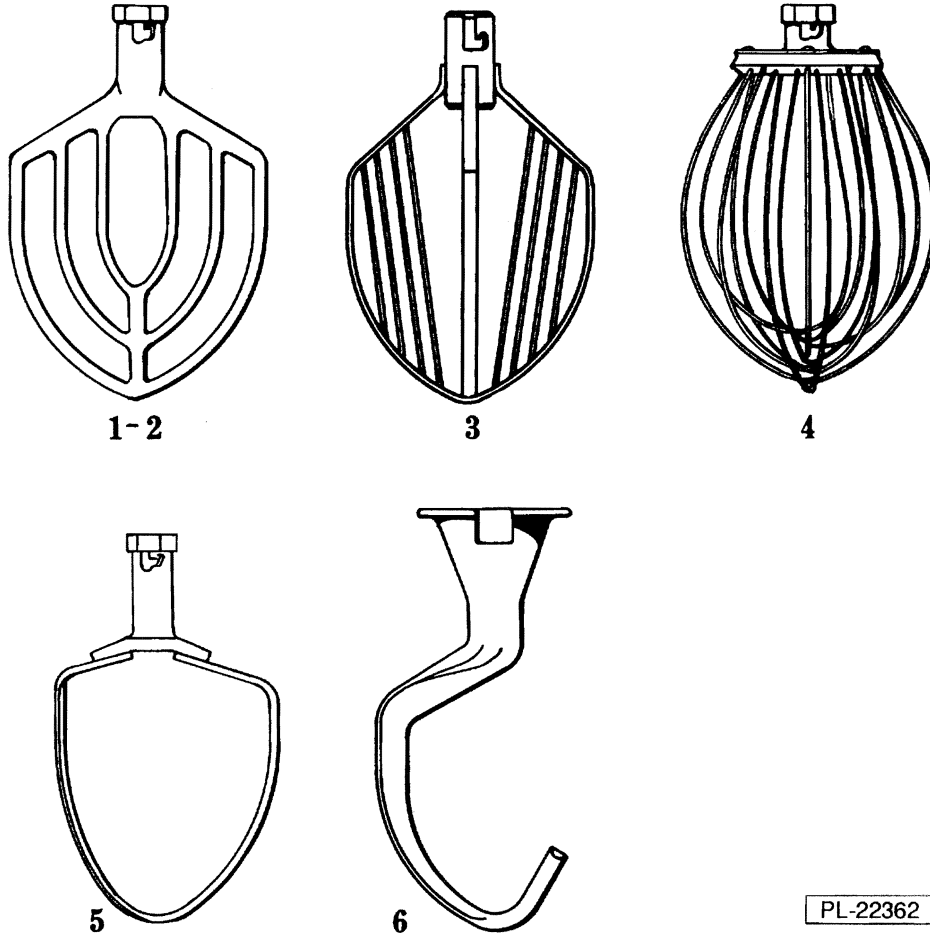
ILLUS.	PART NO.	NAME OF PART	AMT.
PL-51771	1	24464 Gasket - Cover Cap	1
	2	SC-10-32 Mach. Screw 8-32 x 3/8 Truss Hd.	4
	3	12669 Spacer - Bearing	1
	4	BB-17-5 Ball Bearing N.D. #7601	1
	5	294306-1 Cap - Cover (Deluxe)	1
	6	11430 Nut - Special	2
	7	WS-7-9 Washer - Special	1
	8	271612-2 Switch - Electronic Start (50/60 Hz.)	1
	9	271794-1 Standoff - Switch	2
	10	SC-9-64 Mach. Screw 6-32 x 1 Rd. Hd.	2
	11	438536-2 Bracket - Bearing (Painted)	1
	12	SC-16-31 Mach. Screw 12-24 x 2 Oval Hd.	4
	13	SC-12-59 Mach. Screw 10-24 x 2 1/4 Fil. Hd.	4
	14	65477-164-1 Stator Assy. (115 V., 60 HZ)	1
	15	65477-164-5 Stator Assy. (230V., 60 HZ)	1
	16	65477-164-2 Stator Assy. (115V., 50 HZ)	1
	17	65477-164-6 Stator Assy. (220 V., 50 HZ)	1
	18	22275-274 Rotor Assy	1
	19	BB-5-30 Ball Bearing - N.D #C8503	1
	20	13174-1 Deflector - Grease	1
		SC-18-77 Mach. Screw 6-32 x 5/16 Phil Pan Hd.	1
		WL-3-9 Lockwasher 6 Medium	1
		70487-18 Capacitor	1
		271937 Clip - Capacitor Retaining	1



PL-22364

PLANETARY AND ATTACHMENT HUB UNIT

ILLUS.	PART NO.	NAME OF PART	AMT.
1	SC-13-71	Mach. Screw 12-24 x 3/4 Flat Hd	4
2	114832-1	Plug - Attachment Hub	1
3	435047-4	Hub - Attachment (Painted)	1
4	108197-1	Thumb Screw	1
5	12746-5	Washer - Thrust (.080)	AR
6	12746-6	Washer - Thrust (.106)	AR
7	12746-7	Washer - Thrust (.092)	AR
8	12746-8	Washer - Thrust (.086)	AR
9	12746-9	Washer - Thrust (.098)	AR
10	12746-10	Washer - Thrust (.112)	AR
11	12746-12	Washer - Thrust (.119)	AR
12	12746-13	Washer - Thrust (.121)	AR
13	12746-16	Washer - Thrust (.129)	AR
14	12746-18	Washer - Thrust (.117)	AR
15	12746-19	Washer - Thrust (.115)	AR
16	435065	Bevel Drive Gear & Seal Assy.	1
17	12682	Internal Gear Assy. (56T)(Incls. items 26 & 27)	1
18	12684-1	Cup - Drip	1
19	WL-3-35	Lockwasher 1/4 Helical	6
20	SC-40-8	Cap Screw 1/4-20 x 1 Soc. Hd.	6
21	65062-2	Pin	1
22	113949	Agitator Shaft Assy. (Incls. item 21)	1
23	121814	Seal - Oil (13/16" I.D.)	1
24	BB-17-12	Ball Bearing - N.D. #7503	1
25	113953	Planetary	1
26	BA-2-9	Ball 1/4 Dia.	2
27	7094	Spring	2
28	BB-17-12	Ball Bearing - N.D. #7503	1
29	12683	Pinion - Beater (17T)	1
30	12430-48	Key - 3/16 Sq. x 3/4 Lg.	1
31	RR-4-18	Retaining Ring	1



PL-22362

AGITATORS

ILLUS. PL-22362	PART NO.	NAME OF PART	AMT.
1	275549	"B" Flat Beater (Standard)	1
2	275551	"B" Flat Beater (SST)	1
3	295166	"C" Wing Whip	1
4	275895	"D" Wire Whip (SST)	1
5	315692	"P" Pastry Knife	1
6	275930	"E" Dough Arm	1