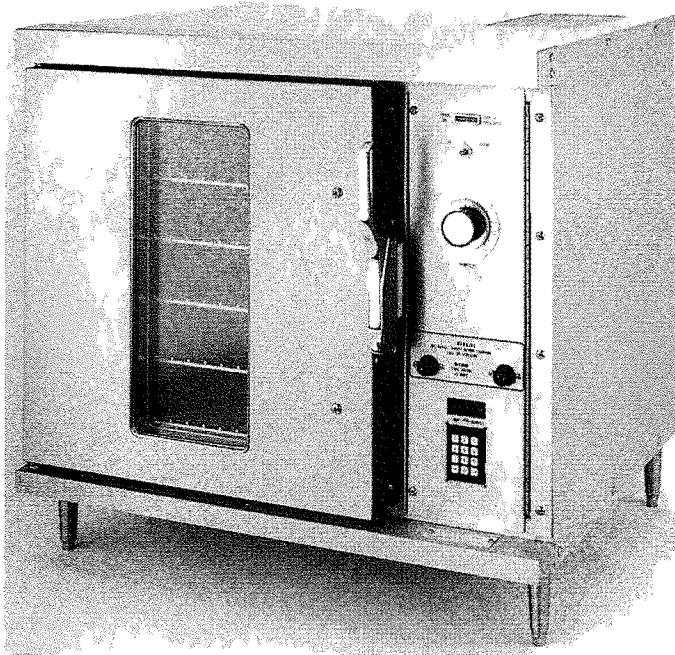




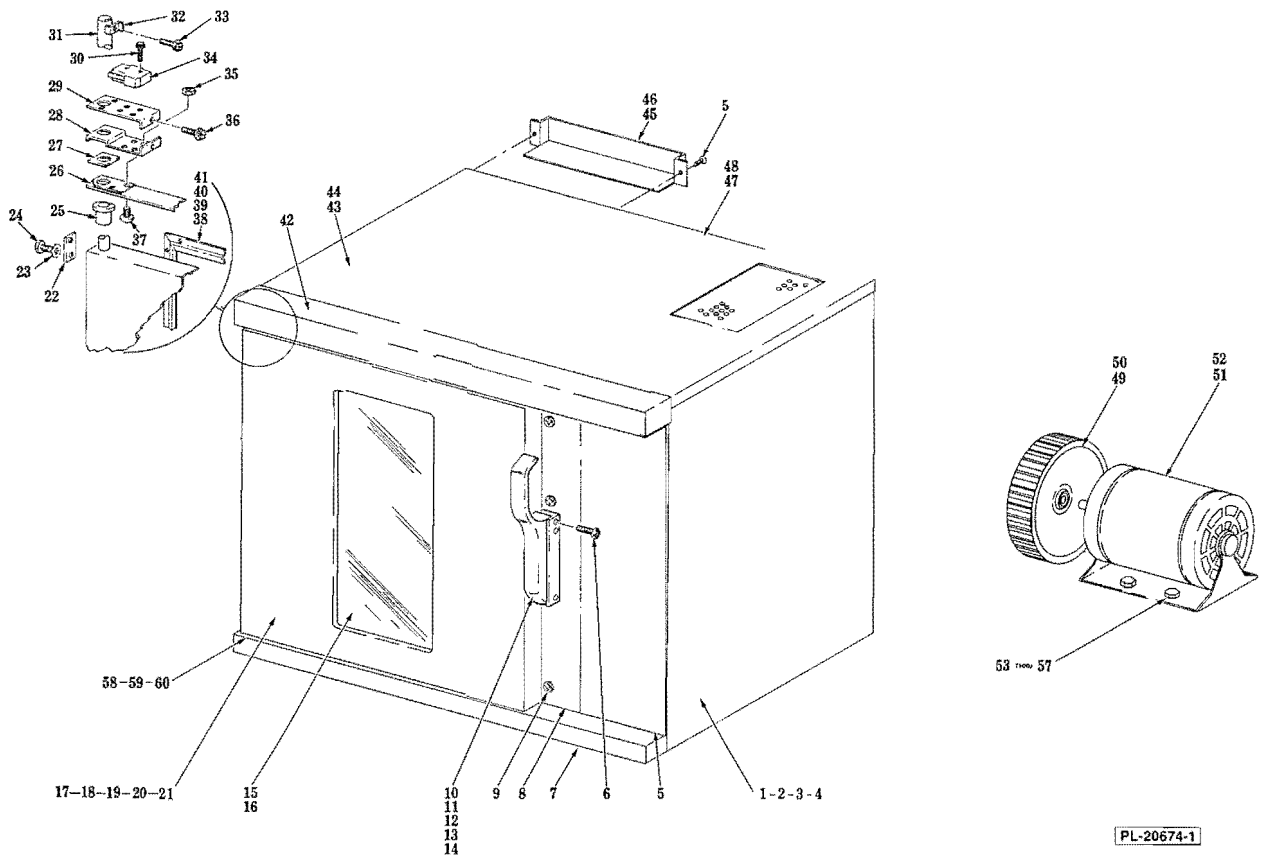
# CATALOG OF REPLACEMENT PARTS



## HALF-SIZE CONVECTION OVENS

CN85

- ML-43600
- ML-43601
- ML-43602
- ML-43603
- ML-43641
- ML-43642
- ML-43645
- ML-43646
- ML-43660
- ML-43671
- ML-43672
- ML-43673
- ML-43674

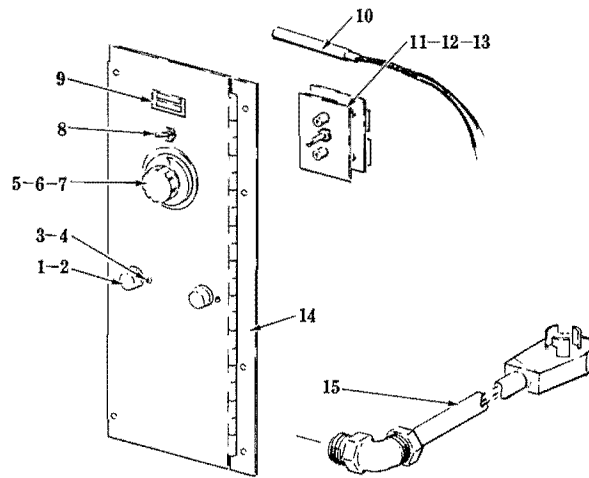


**CABINET AND DOORS**

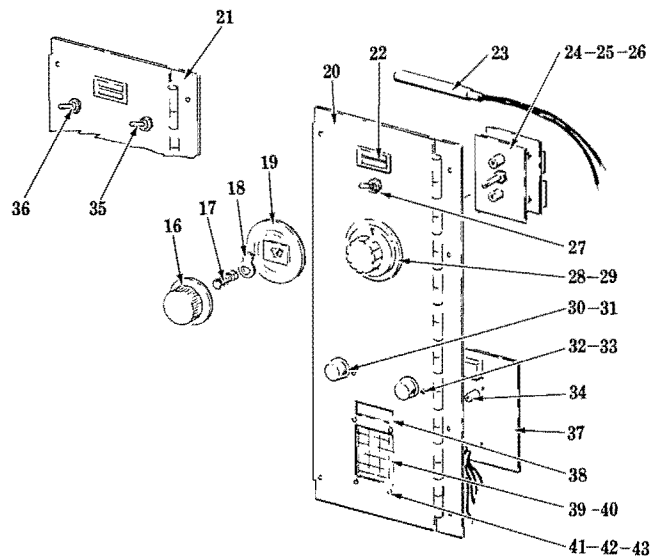
PL-20674-1

## CABINET AND DOORS

ILLUS. PL-20674-1	PART NO.	NAME OF PART <sup>2a</sup>	AMT.
1	347594-1	Side Panel - R.H. (Painted)	1
2	347594-2	Side Panel - L.H. (Painted)	1
3	347594-3	Side Panel - R.H. (SST)	1
4	347594-4	Side Panel - L.H. (SST)	1
5	SD-34-22	Self-Tapping Screw 10-16 x 5/8 Phil. Truss Hd., Type AB	2
6	SC-117-60	Mach. Screw 10-32 x 1 1/4 Phil. Oval Hd	3
7	347517-1	Lower Cover	1
8	353692-1	Door Jamb Assy	1
9	SD-34-22	Self-Tapping Screw 10-16 x 5/8 Phil. Truss Hd., Type AB	AR
10	353721-1	Latch	1
11	353939-1	Fastener	2
12	SC-114-99	Mach. Screw 10-32 x 1/2 Phil. Flat Hd	2
13	353683-1	Support - Latch	1
14	SC-115-51	Mach. Screw 10-32 x 1/2 Phil. Truss Hd	1
15	342129-1	Window	1
16	SD-34-19	Self-Tapping Screw 10-16 x 3/8 Phil. Truss Hd., Type AB	4
17	354859-1	L.H. Door Assy. (W/Window) (Incls. items 15, 19, 21, 22, 23, 24, 31 & 59)	1
18	354859-2	L.H. Door Assy. (W/O Window) (Incls. items 20, 21, 22, 23, 24, 31 & 59)	1
19	347492-3	Inner Door Assy. (W/Opening)	1
20	347492-4	Inner Door Assy. (W/O Window)	1
21	SD-34-19	Self-Tapping Screw 10-16 x 3/8 Phil. Truss Hd., Type AB	20
22	347604-1	Pivot - Retainer	2
23	WL-19-22	Lock Washer 1/4 Ext. Shakeproof	4
24	SC-113-76	Cap Screw 1/4-20 x 1 Hex Hd	4
25	347080-2	Bushing	1
26	353483-1	Plate - Door	1
27	353482-1	Spacer	1
28	353778-1	Support - Switch	1
29	353780-1	Bracket - Switch	1
30	SD-34-47	Self-Tapping Screw 6-32 x 1 Slot. Hex Washer Hd., Type T	2
31	353781-1	Shaft - Door (Upper)	1
32	353784-1	Bracket - Actuator	1
33	SD-36-30	Self-Tapping Screw 8-32 x 1/4 Slot. Hex Washer Hd., Type T	1
34	353782-1	Switch - Door	1
35	NS-46-52	Nut & Lock Washer Assy. 1/4-20 "Keps"	2
36	SD-36-30	Self-Tapping Screw 8-32 x 1/4 Slot. Hex Washer Hd., Type T	1
37	SC-115-62	Mach. Screw 1/4-20 x 1/2 Phil. Truss Hd	2
38	354381-1	Seal - Door (Left Side)	1
39	354382-1	Seal - Door (Right Side)	1
40	354383-1	Seal - Door (Top & Bottom)	2
41	SD-34-5	Self-Tapping Screw 6-20 x 3/8 Phil. Pan Hd., Type AB	16
42	347593-1	Cover - Top	1
43	347592-1	Top Assy. (Painted)	1
44	347592-2	Top Assy. (SST)	1
45	347590-1	Vent (Steel)	1
46	347590-2	Vent (SST)	1
47	347581-1	Back Assy. (Painted)	1
48	347581-2	Back Assy. (SST)	1
49	354526-1	Blower Assy. (ML-43602, 43603, 43641, 43642, 43645, 43660, 43671, 43672, 43673, & 43674)	1
50	342205-1	Blower Assy. (ML-43600, 43601 & 43646)	1
51	345201-1	Motor (1 Speed)	1
52	342146-5	Motor, 2-Speed (ML-43671, 43572, 43573 & 43674)	1
53	SC-116-84	Cap Screw 5/16-18 x 1 1/8 Hex Hd	4
54	WS-29-46	Washer	8
55	NS-46-86	Nut & Lock Washer Assy. 5/16-18 Hex "Keps"	4
56	350711-3	Spacer - Insulating	2
57	346217-1	Washer - Rubber	8
58	347080-2	Bushing	1
59	347598-1	Shaft - Door (Lower)	1
60	WS-29-75	Washer	4



ML-43601



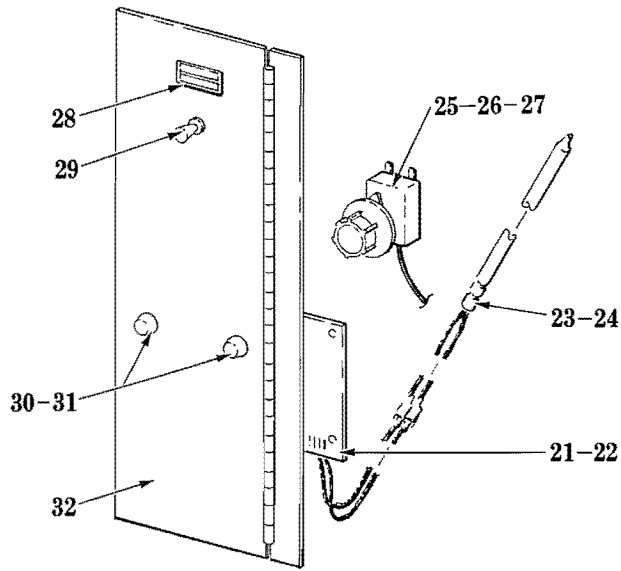
- ML-43602 ML-43660
- ML-43603 ML-43671
- ML-43641 ML-43672
- ML-43642 ML-43673
- ML-43645 ML-43674

PL-20669-1

**CONTROLS**

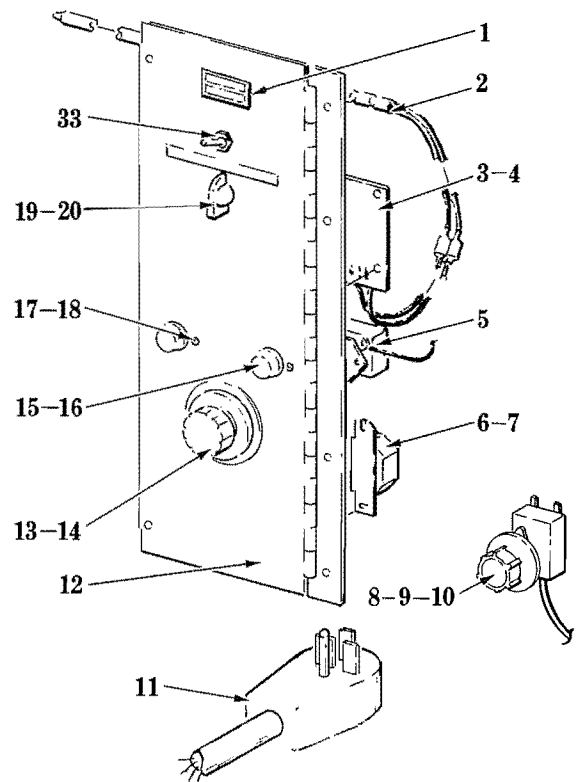
## CONTROLS

ILLUS. PL-20669-1	PART NO.	NAME OF PART <sup>28</sup>	AMT.
1	344138-2	Fuse Holder	2
2	FE-19-40	Fuse - 15 Amp	2
3	SC-114-27	Mach. Screw 8-32 x ½ Phil. Pan Hd	4
4	NS-46-51	Mach. Nut 8-32 Hex	4
5	354208-1	Knob Assy	1
6	353560-1	Plate - Dial	1
7	SC-114-83	Mach. Screw 6-32 x ¼ Pan Hd	2
8	340324-11	Switch (3 Position)	1
9	354375-1	Light - Indicator (2 Lens)	1
10	354319-1	Probe Assy	1
11	353613-1	Controller - Temperature	1
12	SC-114-83	Mach. Scw 6-32 x ¼ Pan Hd	2
13	WS-28-20	Washer	2
14	354657-2	Panel & Hinge Assy	1
15	354886-1	Cord & Plug Assy	1
16	354842-1	Knob - Dial (ML-43645)	1
17	354861-1	Spring (ML-43645)	1
18	354826-1	Key - Shaft (ML-43645)	1
19	354841-1	Plate - Dial (ML-43645)	1
20	354656-1	Panel & Hinge Assy. (ML-43602, 43603, 43641, 43642, 43645 & 43660)	1
21	354656-6	Panel & Hinge Assy. (ML-43671, 43672, 43673 & 43674)	1
22	354375-1	Light - Indicator (2 Lens)	1
23	354319-1	Probe Assy	1
24	353613-1	Controller - Temperature	1
25	SC-114-83	Mach. Screw 6-32 x ¼ Pan Hd	2
26	WS-28-20	Washer	2
27	340324-11	Switch (3 Position)	1
28	354208-1	Knob Assy. (ML-43602, 43603, 43641, 43642, 43660, 43671, 43672, 43673 & 43674)	1
29	353560-1	Plate - Dial (ML-43602, 43603, 43641, 43642, 43660, 43671, 43672, 43673 & 43674)	1
30	344138-2	Fuse Holder	2
31	FE-19-40	Fuse - 15 Amp	2
32	SC-114-27	Mach. Screw 8-32 x ½ Phil. Pan Hd	4
33	NS-46-51	Mach. Nut 8-32 Hex	4
34	345967-6	Spacer	4
35	340324-9	Switch (2 Position) (ML-43671, 43672, 43673 & 43674)	1
36	340324-11	Switch (3 Position) (ML-43671, 43672, 43673 & 43674)	1
37	335691-3	P.C. Board Assy	1
38	353619-1	Filter	1
39	347618-1	Key Board - Sealed	1
40	347619-1	Gasket - Key Board	1
41	SC-116-86	Mach. Screw 2-56 x ¾ Phil. Pan Hd	4
42	WL-19-29	Lock Washer #2 Int. Shakeproof	4
43	NS-46-7	Mach. Nut 2-56 Hex	4
	342132-4	Guard - Thermostat Probe	1
	SD-34-10	Self-Tapping Screw 8 x ½ Hex Washer Hd	2



ML-43646

PL-20755-1

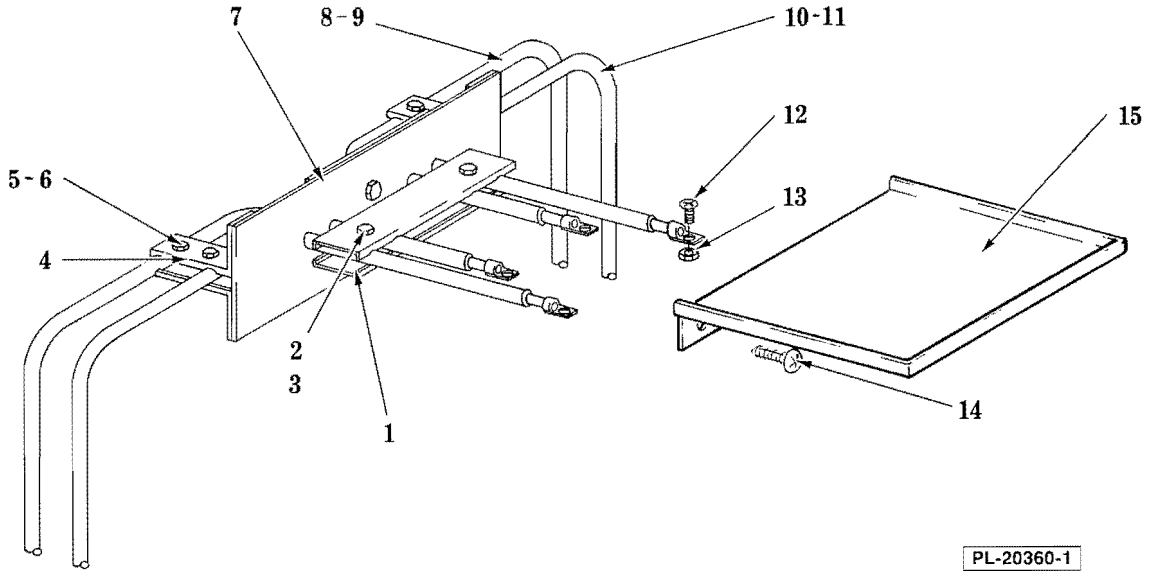


ML-43600

CONTROLS

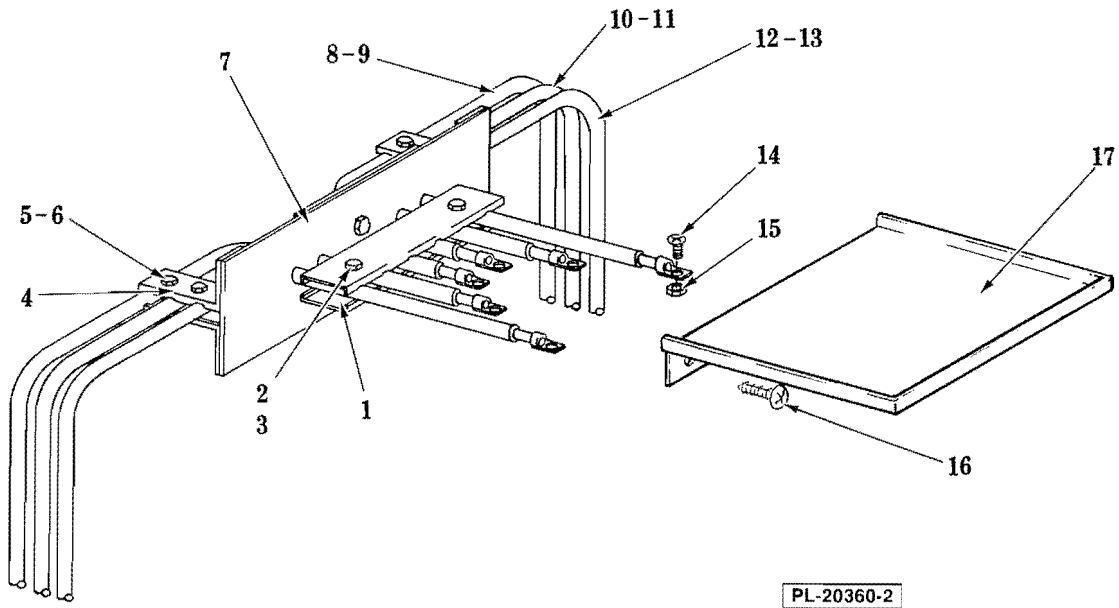
## CONTROLS

ILLUS. PL-20755-1	PART NO.	NAME OF PART <sup>28</sup>	AMT.
1	354375-1	Light - Indicator (2 Lens) .....	1
2	352659-1	Probe .....	1
3	352658-1	P.C. Board .....	1
4	NS-46-89	Nut & Lock Washer Assy. 6-32 "Keps" .....	3
5	353119-1	Timer .....	1
6	353120-1	Buzzer .....	1
7	NS-46-89	Nut & Lock Washer Assy. 6-32 "Keps" .....	2
8	343385-1	Thermostat .....	1
9	350545-22	Knob Assy. (Thermostat) .....	1
10	349259-1	Bracket - Thermostat .....	1
11	352745-1	Cord & Plug .....	1
12	354657-1	Panel & Hinge Assy .....	1
13	354208-1	Knob Assy .....	1
14	353116-1	Dial - Plate .....	1
15	344138-2	Fuse Holder .....	2
16	FE-19-40	Fuse - 15 Amp .....	2
17	SC-114-27	Mach. Screw 8-32 x 1/2 Phil. Pan Hd .....	4
18	NS-46-51	Mach. Nut 8-32 Hex .....	4
19	352660-1	Switch & Knob Assy. (Incls. item 20) .....	1
20	352660-2	Knob - Switch .....	1
21	349200-1	P.C. Board .....	1
22	NS-46-89	Nut & Lock Washer Assy. 6-32 "Keps" .....	3
23	352659-1	Probe .....	1
24	335668-1	Clamp .....	1
25	343385-1	Thermostat .....	1
26	350545-22	Knob Assy. (Thermostat) .....	1
27	349259-1	Bracket - Thermostat .....	1
28	354375-1	Light - Indicator (2 Lens) .....	1
29	340324-11	Switch (3 Position) .....	1
30	344138-2	Fuse Holder .....	2
31	FE-19-40	Fuse - 15 Amp .....	2
32	354657-5	Panel & Hinge Assy .....	1
33	340324-11	Switch (3 Position) .....	1
	349202-1	Hex Connector 24" Lg. (Fastron) (ML-43646) .....	1
	342132-4	Guard - Thermostat Probe .....	1
	352732-1	Receptacle .....	1



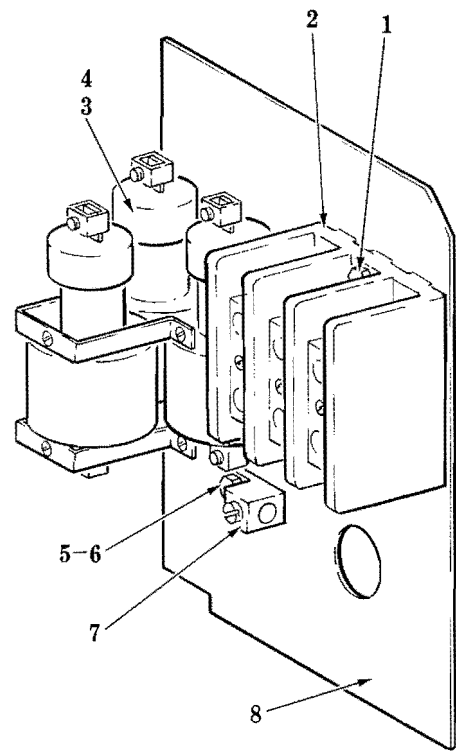
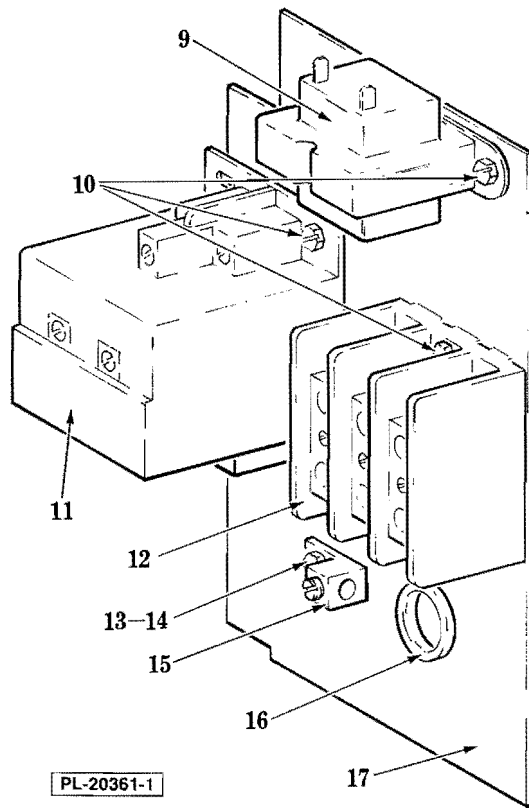
**ELECTRIC HEATERS  
(TWO UNITS)**

ILLUS. PL-20360-1	PART NO.	NAME OF PART <sup>21</sup>	AMT.
1	342131-1	Clamp - Large	2
2	SC-114-2	Mach. Screw 10-32 x 3/4 Slot. Hex Washer Hd	2
3	NS-46-88	Nut & Lock Washer Assy. 10-32 "Keps"	2
4	342133-1	Clamp - Small	6
5	SC-114-2	Mach. Screw 10-32 x 3/4 Slot. Hex Washer Hd	6
6	NS-46-88	Nut & Lock Washer Assy 10-32 "Keps"	6
7	351433-98	Seal Plate Assy	1
8	351393-2	Heater Unit Assy. (Outer) (208 V.)	1
9	351393-4	Heater Unit Assy. (Outer) (240 V.)	1
10	351393-1	Heater Unit Assy. (Inner) (208 V.)	1
11	351393-3	Heater Unit Assy. (Inner) (240 V.)	1
12	SC-114-3	Mach. Screw 10-32 x 1/2 Slot. Hex Washer	4
13	NS-46-88	Nut & Lock Washer Assy. 10-32 "Keps"	4
14	SD-34-22	Self-Tapping Screw 10 x 5/8 Phil. Truss Hd., Type AB	2
15	354225-1	Tray - Heater Unit	1
	347494-1	Heater Assy. (208 V.) (Incls. items 1 thru 8 & 10)	1
	347494-2	Heater Assy. (240 V.) (Incls. items 1 thru 7, 9 & 11)	1



**ELECTRIC HEATERS  
(THREE UNITS)**

ILLUS. PL-20360-2	PART NO.	NAME OF PART <sup>21</sup>	AMT.
1	342131-1	Clamp - Large	2
2	SC-114-2	Mach. Screw 10-32 x 3/4 Slot. Hex Washer Hd	2
3	NS-46-88	Nut & Lock Washer Assy. 10-32 "Keps"	2
4	342133-1	Clamp - Small	6
5	SC-114-2	Mach. Screw 10-32 x 3/4 Slot. Hex Washer Hd	6
6	NS-46-88	Nut & Lock Washer Assy. 10-32 "Keps"	6
7	351438-51	Seal Plate Assy	1
8	351393-5	Heater Unit Assy. (208 V.)	1
9	351393-6	Heater Unit Assy. (240 V.)	1
10	351393-2	Heater Unit Assy. (208 V.)	1
11	351393-4	Heater Unit Assy. (240 V.)	1
12	351393-1	Heater Unit Assy. (208 V.)	1
13	351393-3	Heater Unit Assy. (240 V.)	1
14	SC-114-3	Mach. Screw 10-32 x 1/2 Slot. Hex Washer Hd	4
15	NS-46-88	Nut & Lock Washer Assy. 10-32 "Keps"	4
16	SD-34-22	Self-Tapping Screw 10 x 5/8 Phil. Truss Hd., Type AB	2
17	354225-1	Tray - Heater Unit	1
	352661-1	Heater Assy. (208 V.) (Incls. items 1 thru 8, 10 & 12)	1
	352661-2	Heater Assy. (240 V.) (Incls. items 1 thru 7, 9, 11 & 13)	1



RELAY

## RELAY

ILLUS. PL-20361-1	PART NO.	NAME OF PART <sup>21</sup>	AMT.
*1	SD-34-62	Self-Tapping Screw 10-32 x 1/2 Slot. Hex Washer Hd., Type T	2
*2	345504-1	Block - Terminal	1
*3	349257-1	Relay - Mercury (3 Pole)	1
*4	SD-34-62	Self-Tapping Screw 10-32 x 1/2 Slot. Hex Washer Hd., Type T	2
*5	SD-34-62	Self-Tapping Screw 10-32 x 1/2 Slot. Hex Washer Hd., Type T	1
*6	WL-19-22	Lock Washer 1/4 Ext. Shakeproof	2
*7	350700-2	Lug - Terminal	1
*8	349252-1	Plate - Relay	1
**9	335653-1	Transformer	1
***,**10	SD-34-62	Self-Tapping Screw 10-32 x 1/2 Slot. Hex Washer Hd., Type T	6
***,**11	354071-1	Relay - Mercury (3 Pole)	1
***,**12	345504-1	Block - Terminal	1
***,**13	SD-34-62	Self-Tapping Screw 10-32 x 1/2 Slot. Hex Washer Hd., Type T	1
***,**14	WL-19-22	Lock Washer 1/4 Ext. Shakeproof	2
***,**15	350700-2	Lug - Terminal	1
***,**16	FE-17-16	Bushing - Electrical	1
***,**17	354897-1	Plate - Relay	1

\*ML-43600, 43646.

\*\*ML-43602, 43603, 43641, 43642, 43645, 43660, 43671, 43672, 43673 &amp; 43674.

\*\*\*ML-43601

**OPTIONS AND ACCESSORIES**

PL-20362	PART NO.	NAME OF PART <sub>21</sub>	AMT.
	347498-3	Rack Guide (L.H.) .....	1
	347498-4	Rack Guide (R.H.) .....	1
	347497-2	Rack .....	AR
	348164-1	Leg .....	4
	347757-2	Panel - Bottom (Liner) .....	1
	347758-4	Panel - Top Rear (Liner) .....	1
	347759-4	Panel - Top Front (Liner) .....	1
	347760-2	Panel - Back (Liner) .....	1
	347761-2	Panel - Side (Liner) .....	1
	341655-6	Caster - 6" .....	4