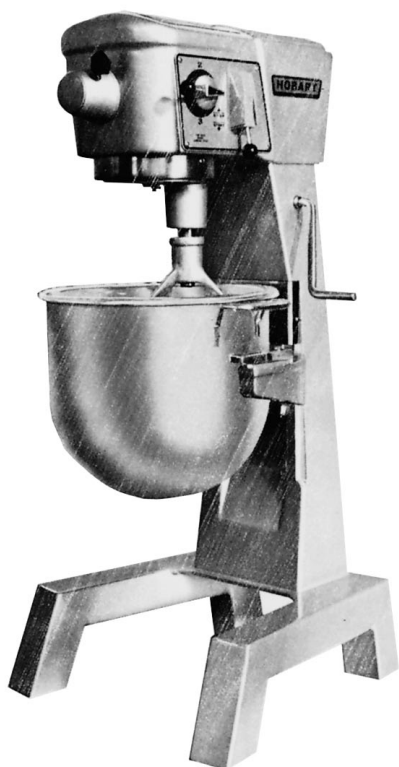




# CATALOG OF REPLACEMENT PARTS



## MODEL D300 SERIES MIXERS

(INCLUDES MOTOR PARTS)

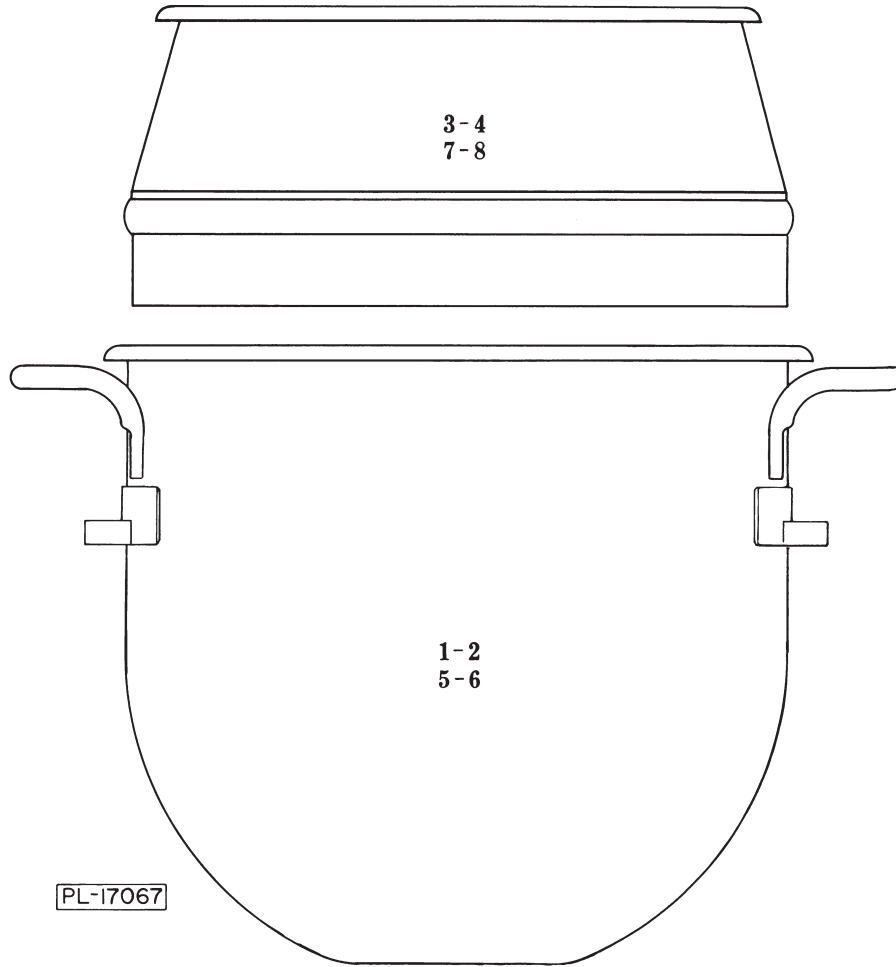
ML-33460	D300 (W & W/O Overload Protection)
ML-33461	D300T (Timed)
ML-33462	D300D (W & W/O Overload Protection)
ML-33463	D300DT (Timed)

THIS MANUAL REPLACES AND SHOULD BE USED INSTEAD  
OF FORMS 13510 (2-81), 10373F (2-77) & 10553B (5-73)

### PRIOR ML'S COVERED IN THIS MANUAL:

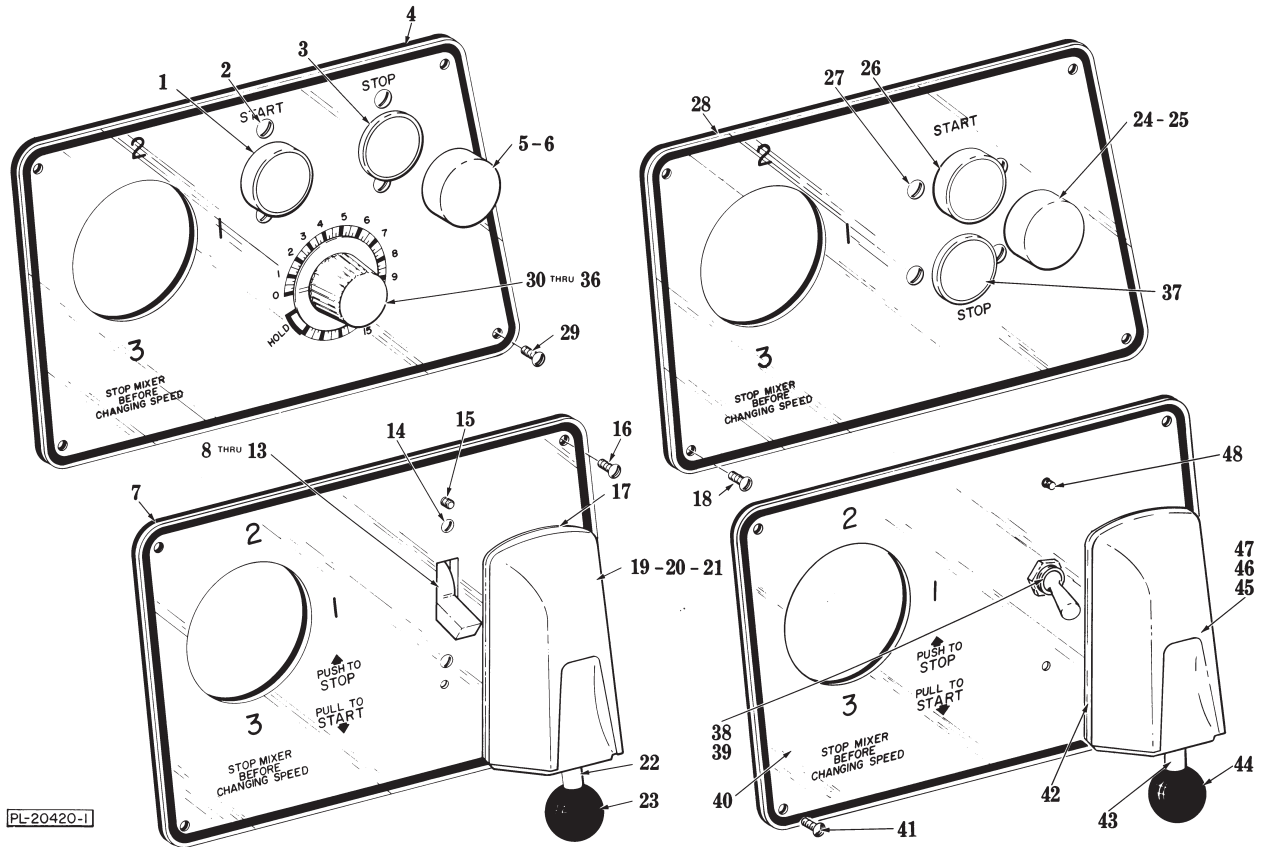
ML-19544	D300 (W & W/O Overload Protection)
ML-19547	D300T (Timed)
ML-19550	D300D (W & W/O Overload Protection)
ML-19819	D300DT (Timed)
ML-17684	D300 (W & W/O Overload Protection)
ML-17685	D300T (Timed)
ML-17686	D300D (W & W/O Overload Protection)
ML-17687	D300DT (Timed)





**BOWL**

ILLUS. PL-17067	PART NO.	NAME OF PART <sup>23</sup>	AMT.
1	104413	Bowl - 30 Qt. (Tinned) .....	1
2	115228	Bowl - 20 Qt. (Not Shown) (Tinned) .....	1
3	70497-1	Splash Cover Assy. (30 Qt.) (Tinned) .....	1
4	20531-1	Splash Cover Assy. (20 Qt.) (Tinned) .....	1
5	104414	Bowl - 30 Qt. (SST) .....	1
6	115229	Bowl - 20 Qt. (SST) .....	1
7	70497-2	Splash Cover Assy. (30 Qt.) (SST) .....	1
8	20531-2	Splash Cover Assy. (20 Qt.) (SST) .....	1



**TIMER, CONTROL AND SWITCH UNIT  
(MACHINE ML's-33460 THRU 33463)**

**TIMER, CONTROL AND SWITCH UNIT  
(MACHINE ML's-33460 THRU 33463)**

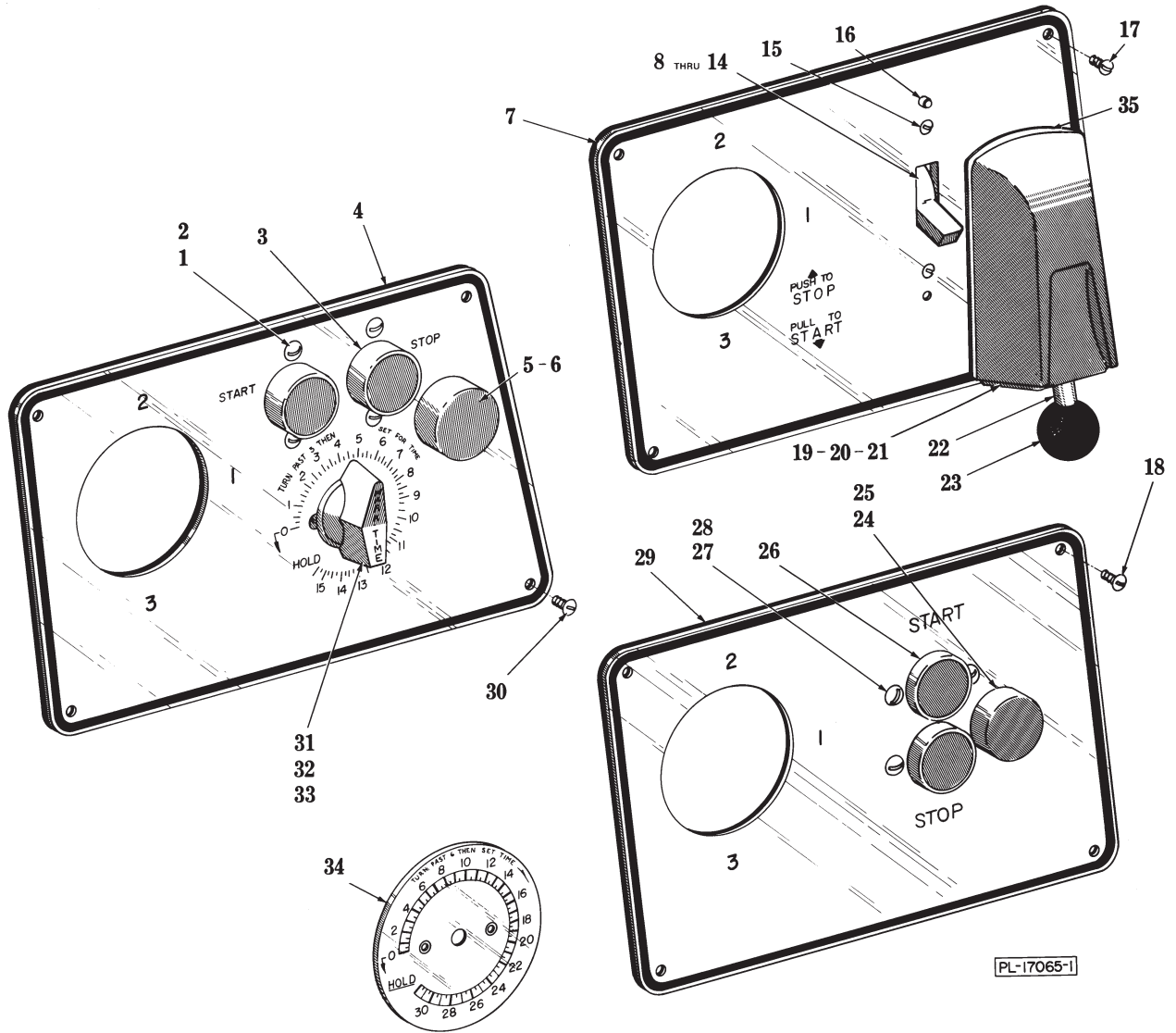
ILLUS. PL-20420-1	PART NO.	NAME OF PART <sup>23</sup>	AMT.
1	87711-183-1	Station - Push Button	1
2	SC-13-12	Mach. Screw 6-32 x 1/4 Flat Hd	1
3	87711-183-2	Station - Push Button	1
4	291725	Plate - Switch & Timer	1
5	102467-1	Cap - Push Button (Start)	1
6	102467-2	Cap - Push Button (Stop)	1
7	117864	Plate - Manual Switch	1
8	See Below	Switch - Manual (1 Ph.)	1
9	87711-206-1	Switch - Manual (200/230 V., 60 Hz.; 220 V., 50 Hz.) (3 Ph.)	1
***10	87711-206-1	Switch - Manual (460 V., 60 Hz.; 380/415 V., 50 Hz.) (3 Ph.)	1
**11	87810-19-1	Switch - Manual (Less Elements) (1 Ph.)	1
12	*	Heater Element - Manual Switch	AR
13	70262	Insulator - Switch (460 V., 60 Hz.; 380/415 V., 50 Hz.) (3 Ph.)	1
14	SC-9-49	Mach. Screw 6-32 x 3/8 Rd. Hd	2
15	SD-15-41	Self-Tapping Screw 8-32 x 1/2 Phil. Pan Hd., Type TT	2
16	SD-24-1	Self-Tapping Screw 10-24 x 3/8 Phil. Pan Hd., Type TT	4
17	105050	Gasket - Switch Housing	1
18	SD-24-1	Self-Tapping Screw 10-24 x 3/8 Phil. Pan Hd., Type TT	4
19	105305	Switch Rod & Housing Assy. (Incls. items 20 thru 23)	1
20	105150	Housing - Switch Seal	1
21	121559	Sleeve - Actuating Rod	1
22	121237	Rod - Switch Actuating	1
23	105197	!Knob	1
24	102467-1	Cap - Push Button (Start)	1
25	102467-2	Cap - Push Button (Stop)	1
26	87711-183-1	Station - Push Button	1
27	SC-13-12	Mach. Screw 6-32 x 1/4 Flat Hd	4
28	291723	Plate - Magnetic Switch	1
29	SD-24-1	Self-Tapping Screw 10-24 x 3/8 Phil. Pan Hd., Type TT	4
30	291748	!Knob - Timer	1
31	294650-4-1	Timer Assy. (115 V., 60 Hz., 1 Ph.; 460 V., 60 Hz., 3 Ph.)	1
32	294650-4-2	Timer Assy. (200/230 V., 60 Hz., 1 & 3 Ph.)	1
33	294650-4-3	Timer Assy. (115 V., 50 Hz., 1 Ph.; 380/415 V., 50 Hz., 3 Ph.)	1
34	294650-4-4	Timer Assy. (220 V., 50 Hz., 1 & 3 Ph.)	1
35	SC-13-7	Mach. Screw 5-40 x 1/4 Flat Hd	2
36	291751	Insulation	1
37	87711-183-2	Station - Push Button	1
38	87711-814-1	Switch - Toggle (1 Ph.)	1
39	WS-8-4	Washer	1
40	270325	Plate - Toggle Switch	1
41	SD-24-1	Self-Tapping Screw 10-24 x 3/8 Phil. Pan Hd., Type TT	1
42	105050	Gasket - Switch Housing	1
43	270326	Rod - Switch Actuating	1
44	105197	!Knob	1
45	105305-2	Switch Rod & Housing Assy. (Incls. items 43, 44, 46 & 47)	1
46	105150	Housing - Switch Seal	1
47	121559	Sleeve - Switch Actuating Rod	1
48	SD-15-41	Self-Tapping Screw 8-32 x 1/2 Phil. Pan Hd., Type TT	2
	117542-7	Cord & Plug (115 V.) (D300 & D300D)	1
	117542-21	Cord & Plug (115 V.) (D300T & D300DT)	1
	61285-1	Boot - Insulating (Not Shown)	AR

\*Give Elec. Spec., Mach. Model & Motor Type.

\*\*W/Overload Protection.

\*\*\*W/O Overload Protection.

Item 8 no longer available, order Service Kit 270309 to convert to new style.



**TIMER, CONTROL AND SWITCH UNIT**  
 (MACHINE ML'S - 19544, 19547, 19550,  
 19819, 17684, 17685, 17686 & 17687)

**TIMER, CONTROL AND SWITCH UNIT**  
**(MACHINE ML'S - 19544, 19547, 19550,**  
**19819, 17684, 17685, 17686 & 17687)**

ILLUS. PL-17065-1	PART NO.	NAME OF PART <sup>23</sup>	AMT.
1	SC-15-26	Mach. Screw 8-32 x 5/16 Oval Hd	4
2	WS-2-18	Washer	4
3	See Below	Station - Push Button	2
4	See Below	Plate - Switch & Timer	1
5	102467-1	Cap - Push Button (Start)	1
6	102467-2	Cap - Push Button (Stop)	1
7	117864	Plate - Manual Switch	1
8	See Below	Switch - Manual (1 Ph.)	1
9	87711-206-1	Switch - Manual (200/230 V., 60 Hz.; 220 V., 50 Hz.) (3 Ph.)	1
***10	87711-206-1	Switch - Manual (460 V., 60 Hz.; 380 V., 50 Hz.) (3 Ph.)	1
**11	87810-19-1	Switch - Manual (Less Elements) (1 Ph.)	1
**12	87711-206-1	Switch - Manual (Less Elements) (3 Ph.)	1
13	*	Heater Element - Manual Switch	AR
14	70262	Insulator - Switch (460 V., 60 Hz.; 380 V., 50 Hz.) (3 Ph.)	1
15	SC-9-49	Mach. Screw 6-32 x 3/8 Rd. Hd	2
16	SD-15-41	Self-Tapping Screw 8-32 x 1/2 Phil. Pan Hd. Type TT	4
17	123109	Screw - Special	4
18	123109	Screw - Special	4
19	105305	Switch Rod & Housing Assy. (Incls. items 20 thru 23)	1
20	105150	Housing - Switch Seal	1
21	121559	Sleeve - Actuating Rod	1
22	121237	Rod - Switch Actuating	1
23	105197	Knob	1
24	102467-1	Cap - Push Button (Start)	1
25	102467-2	Cap - Push Button (Stop)	1
26	See Below	Station - Push Button	2
27	SC-15-26	Mach. Screw 8-32 x 5/16 Oval Hd	4
28	WS-2-18	Washer	4
29	See Below	Plate - Magnetic Switch	1
30	123109	Screw - Special	4
31	See Below	Timer & Gasket Assy. (15 Min.) (Incls. item 33)	1
32	103229	Timer, Dial & Gasket Assy. (30 Min.) (Incls. items 33 & 34)	1
33	SC-13-7	Mach. Screw 5-40 x 1/4 Flat Hd	2
34	73540	Dial - Timer (30 Min.)	1
35	105050	Gasket - Switch Housing	1
	61285-1	Boot - Insulating (Not Shown)	AR

\* Give Elec. Spec., Mach. Model & Motor Type.

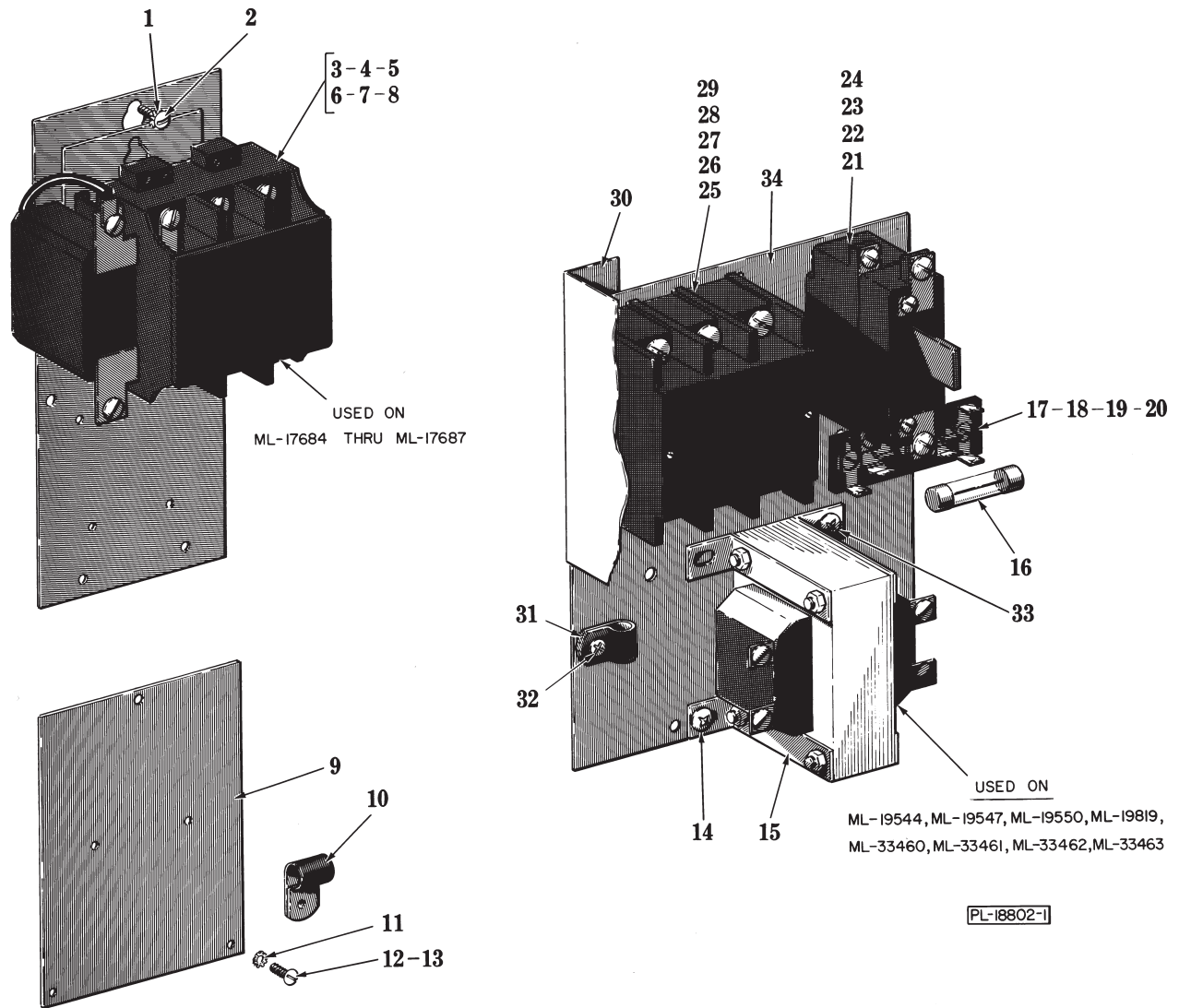
\*\* W/Overload Protection.

\*\*\* W/O Overload Protection.

Items 3, 4, 26, 29 & 31 no Longer available, order Service Kit listed below to convert to new style:

291824 D300 Non-Timed  
291825-1 D300T Timed (115 V., 60 Hz.)  
291825-2 D300T Timed (230 V., 60 Hz.)  
291825-3 D300T Timed (115 V., 50 Hz.)  
291825-4 D300T Timed (220 V., 50 Hz.)

Item 8 no longer available, order Service Kit 270309 to convert to new style.

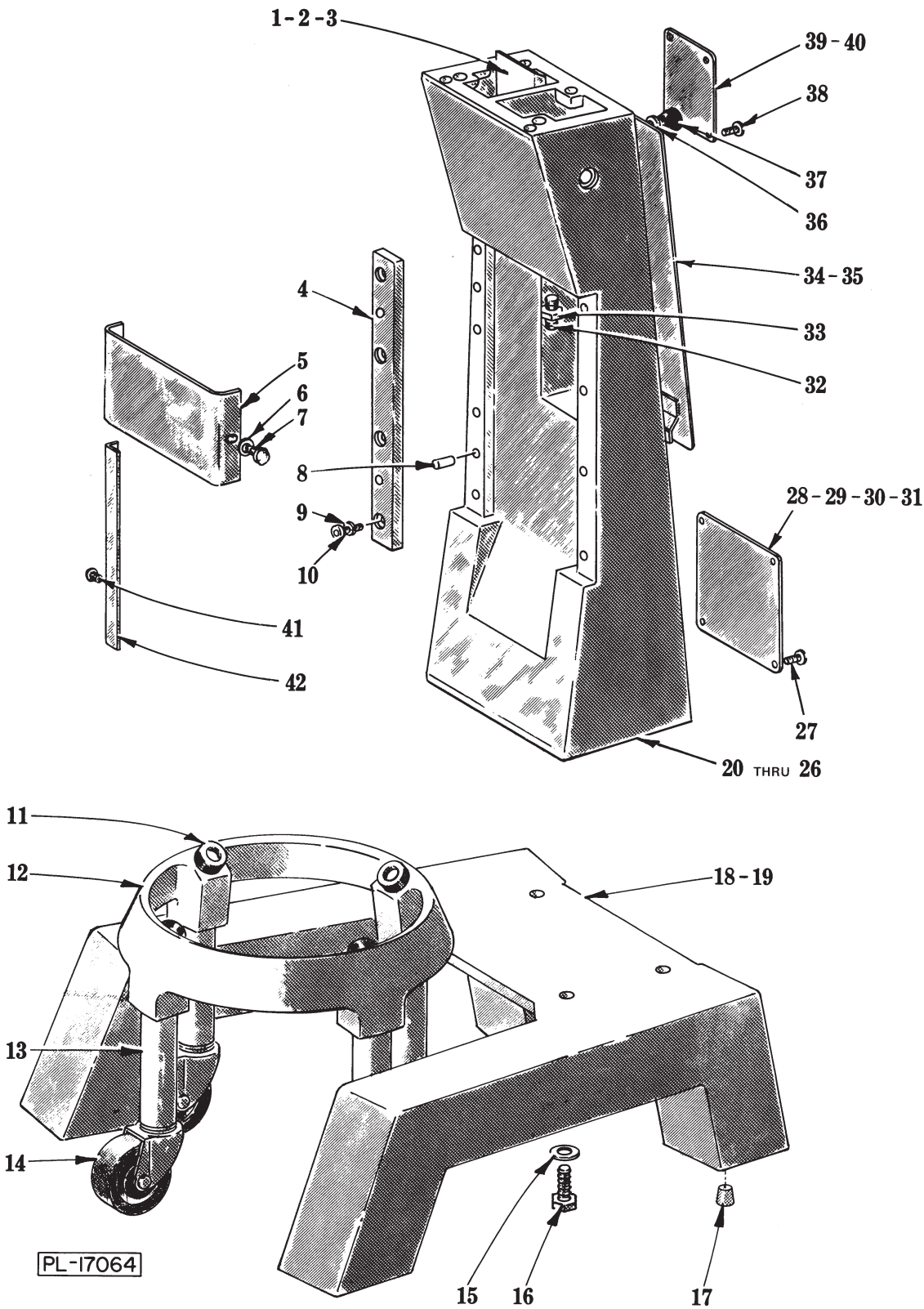


MAGNETIC CONTROL UNIT

## MAGNETIC CONTROL UNIT

ILLUS. PL-18802-1	PART NO.	NAME OF PART <sup>23</sup>	AMT.
1	WL-7-6	Lock Washer 8 Ext. Shakeproof	3
2	SC-7-37	Mach. Screw 8-32 x 1/4 Rd. Hd	3
3	87712-38-2	Starter - Magnetic (Less Elements) (115 V., 50/60 Hz., 1 Ph.)	1
4	87712-38-1	Starter - Magnetic (Less Elements) (220/230 V., 60 Hz.; 220 V., 50 Hz.) (1 Ph.)	1
5	87712-40-1	Starter - Magnetic (Less Elements) (460 V., 60 Hz.; 380 V., 50 Hz.) (3 Ph.)	1
6	87712-39-1	Starter - Magnetic (Less Elements) (200/230 V., 60 Hz.; 220 V., 50 Hz.) (3 Ph)	1
7	72717	Plate - Mounting (Use with 87712-39-1)	1
8	*	Heater Elements - Magnetic Starter	AR
9	70147	Plate - Capacitor Mounting (Manual Starter)	1
10	78752-4	Clip - Wiring	1
11	WL-7-6	Lock Washer 8 Ext. Shakeproof	3
12	SC-7-37	Mach. Screw 8-32 x 1/4 Rd. Hd	2
13	SC-7-41	Mach. Screw 8-32 x 3/8 Rd. Hd	1
14	SD-15-20	Self-Tapping Screw 10-32 x 3/8 Phil. Pan Hd., Type TT (Above 250 V.) (3 Ph.)	1
15	101935	Transformer (Above 250 V.) (3 Ph.)	1
16	FE-9-25	Fuse (1/2 Amp.) (Above 250 V.) (3 Ph.)	1
17	124017	Fuse Block Assy. (Above 250 V.) (3 Ph.)	1
18	85432	Insulator - Fuse Block (Above 250 V.) (3 Ph.)	1
19	SC-9-49	Mach. Screw 6-32 x 3/8 Rd. Hd	1
20	NS-9-7	Mach. Nut 6-32 Hex	1
21	88196-6-1	Relay - Thermal Overload (1 Ph.)	1
22	88196-5-1	Relay - Thermal Overload (3 Ph.) (Tri-Block)	1
23	*	Heater Element - Overload Relay	AR
24	123131	Self-Tapping Screw 8-32 x 3/8 Truss Hd., Type TT	2
25	87713-37-2	Contactors (115 V., 50/60 Hz., 1 Ph.) (2 Pole)	1
26	87713-37-1	Contactors (200/230 V., 60 Hz.; 220 V., 50 Hz.) (1 Ph.) (2 Pole)	1
27	87713-39-1	Contactors (200/230 V., 60 Hz.; 220 V., 50 Hz.) (3 Ph.) (3 Pole)	1
28	87713-39-2	Contactors (460 V., 60 Hz.; 380/415 Hz.) (3 Ph.) (3 Pole)	1
29	SD-8-25	Self-Tapping Screw 10 x 3/8 Phil. Bind. Hd., Type B	2
30	294815	Insulator	1
31	78752-6	Clip - Wiring	1
32	SD-8-25	Self-Tapping Screw 10 x 3/8 Phil. Bind. Hd., Type B	1
33	SD-15-20	Self-Tapping Screw 10-32 x 3/8 Phil. Pan Hd., Type TT (Above 250 V.) (3 Ph.)	1
34	123962	Panel - Control	1

\*Give Elec. Spec., Mach. Model & Motor Type.



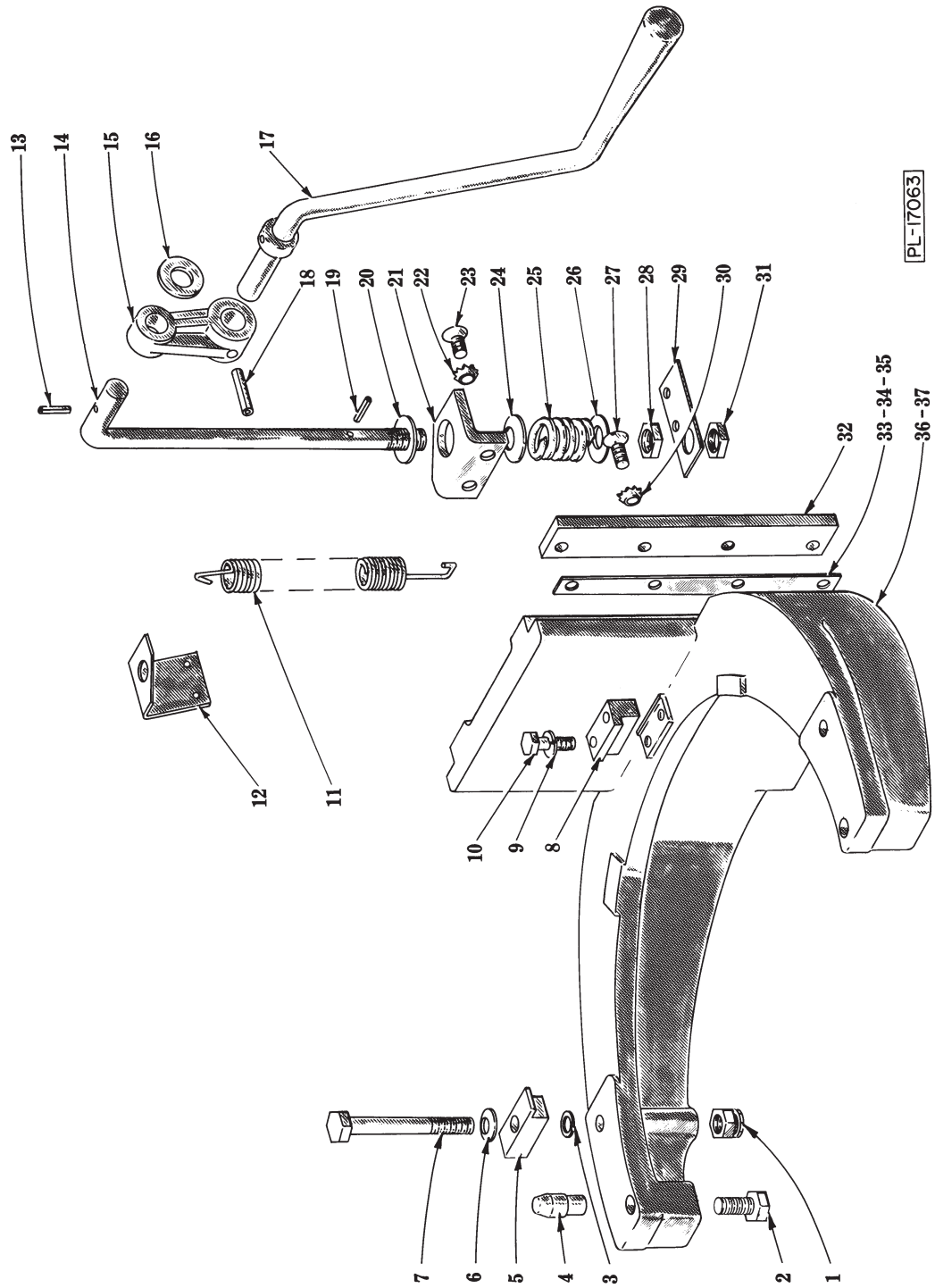
PL-17064

BASE AND PEDESTAL

## BASE AND PEDESTAL

ILLUS. PL-17064	PART NO.	NAME OF PART <sup>23</sup>	AMT.
1	70145	Air Baffle Assy	1
*2	SC-13-55	Mach. Screw 10-24 x 1 Flat Hd	1
*3	SC-16-4	Mach. Screw 10-24 x 1 Oval Hd	1
4	68717	Slideway	2
5	68720	Apron	1
6	WS-23-21	Washer	2
7	70641-11	Thumb Screw - Special	2
8	11800-116	Dowel	2
9	120288	Lock Washer - Special	8
10	SC-40-14	Cap Screw 5/16-18 x 3/4 Soc. Fil. Hd	8
11	18682-1	Bumper	4
12	70593-2	Bowl Truck Assy. (Incls. items 11, 13 & 14)	1
13	70590-1	Leg	4
14	87668-1	Caster	4
15	WS-18-19	Washer	4
16	SC-62-22	Cap Screw 3/8-16 x 1 1/4 Hex Hd	4
17	114992	Plug - Base (Plug for Foot Pad)	AR
*18	110146-2	Base Assy	1
*19	110155	Base Assy	1
*20	121582-1	Pedestal (ML-17684 & ML-17685)	1
*21	121582-4	Pedestal (ML-17686 & ML-17687)	1
*22	123961-4	Pedestal (ML-19544, ML-19547, ML-33460 & ML-33461)	1
*23	123961-2	Pedestal (ML-19550, ML-19819, ML-33462 & ML-33463)	1
*24	87532-88	Lead Wire Assy. (Grd.)	1
25	SC-90-45	Cap Screw 10-24 x 3/8 Hex Hd	1
26	WL-10-6	Lock Washer 10 Ext. Shakeproof	1
27	123109	Screw - Special	4
*28	70004-1	Cover & Gasket Assy. (Capacitor & Starter Access) (ML-17684 & ML-17685)	1
*29	70004-2	Cover & Gasket Assy. (Capacitor & Starter Access) (ML-17686 & ML-17687)	1
*30	123969-1	Cover & Gasket Assy. (Capacitor & Starter Access) (ML-19544, ML-19547, ML-33460 & ML-33461)	1
*31	123969-2	Cover & Gasket Assy. (Capacitor & Starter Access) (ML-19550, ML-19819, ML-33462 & ML-33463)	1
32	SC-47-46	Set Screw 3/8-16 x 1 1/4 Soc. Hdls., Half-Dog Pt	1
33	NS-17-15	Jam Nut 3/8-16 Hex Fin	1
*34	70144-1	Lift Access Cover Assy	1
*35	70144-3	Lift Access Cover Assy	1
36	WS-19-26	Washer	1
37	70450	Knob - Lift Access Cover	1
38	121676-3	Screw - Special	4
*39	117872-1	Plate - Mach. Data (Give Serial No. & Elec. Spec.) (60 Hz.)	1
*40	117872-3	Plate - Mach. Data (Give Serial No. & Elec. Spec.) (50 Hz.)	1
*41	70641-11	Thumb Screw - Special	4
*42	70403	Cover - Slideways	2

\*D300 & D300T.  
\*\*D300D & D300DT



PL-17063

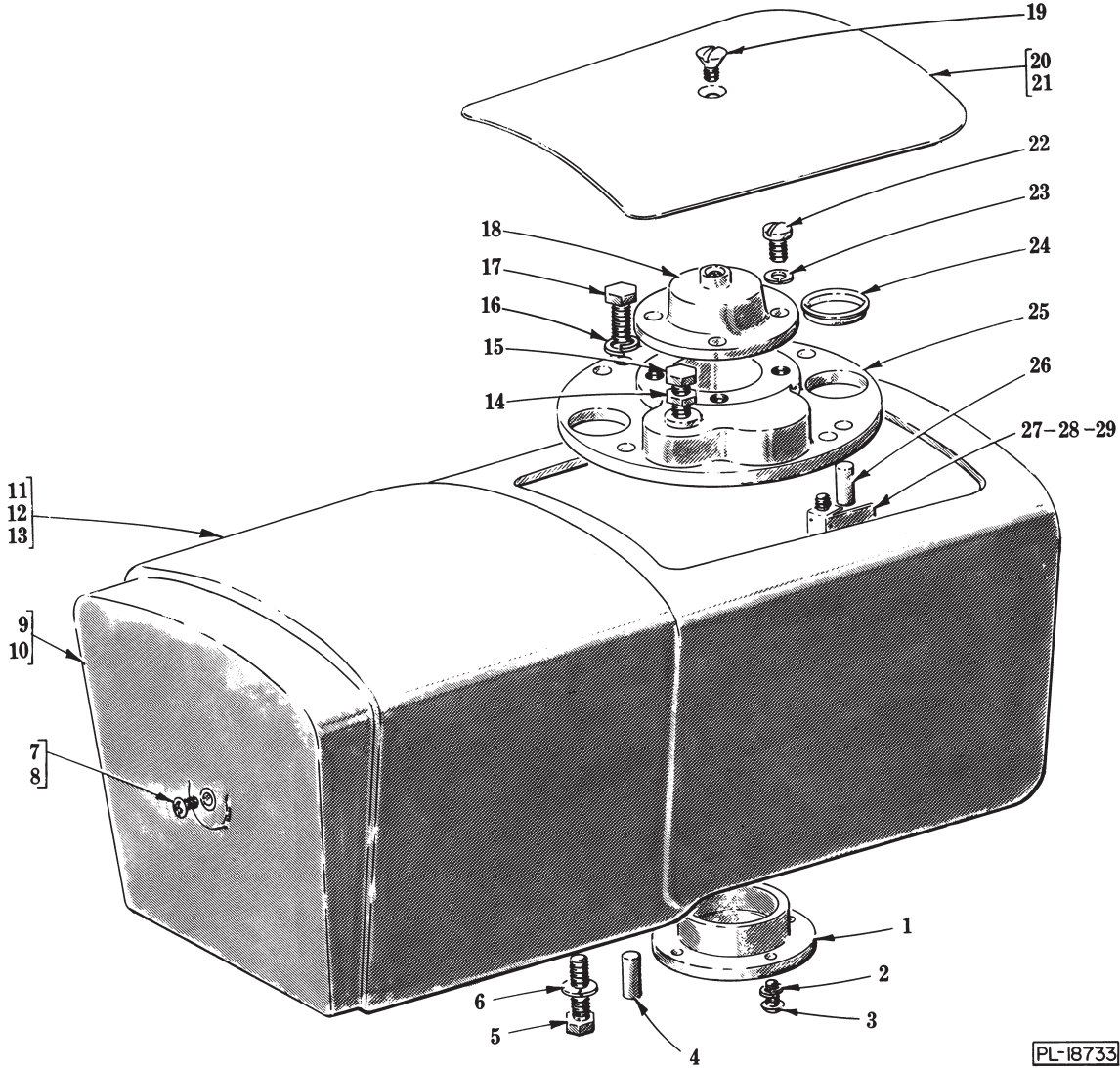
BOWL LIFT UNIT

## BOWL LIFT UNIT

ILLUS. PL-17063	PART NO.	NAME OF PART <sup>23</sup>	AMT.
1	NS-32-13	Stop Nut $\frac{5}{16}$ -18 "Flexloc"	2
2	SC-37-75	Cap Screw $\frac{5}{16}$ -18 x $\frac{3}{4}$ Hex Hd	2
3	WS-4-18	Washer	2
4	70411	Pin - Bowl Locating	2
5	70057	Clamp - Bowl	2
6	70087	Washer - Spring	2
7	SC-62-28	Cap Screw $\frac{5}{16}$ -18 x $3\frac{1}{2}$ Hex Hd	2
8	70044	Retainer - Bowl	1
9	WL-6-16	Lock Washer $\frac{1}{4}$ Light	2
10	SC-36-9	Cap Screw $\frac{1}{4}$ -20 x $1\frac{1}{4}$ Hex Hd	2
11	23884	Spring - Counterbalance	2
12	70056	Bracket - Upper Spring Lift	1
13	RP-2-25	Rollpin $\frac{1}{8}$ Dia. x $\frac{7}{8}$ Lg	1
14	68718	Rod - Bowl Lift	1
15	69995	Arm - Bowl Lift	1
16	WS-8-47	Washer	1
17	70493	Lift Handle Assy	1
18	RP-2-26	Rollpin $\frac{1}{4}$ Dia. x $1\frac{1}{8}$ Lg	1
19	RP-2-10	Rollpin $\frac{3}{16}$ Dia. x 1 Lg	1
20	WS-8-47	Washer	1
21	69998	Bracket - Bowl Lift	1
22	WL-9-14	Lock Washer $\frac{5}{16}$ Csk. Ext. Shakeproof	2
23	SC-61-3	Cap Screw $\frac{5}{16}$ -18 x $\frac{3}{4}$ Soc. Flat Hd	2
24	70131	Washer - Cup	1
25	70104	Spring - Bowl Lift	1
26	WS-8-47	Washer	1
27	SC-61-3	Cap Screw $\frac{5}{16}$ -18 x $\frac{3}{4}$ Soc. Flat Hd	8
28	NS-17-31	Jam Nut $\frac{1}{2}$ -20 Hex Fin	1
29	70058	Bracket - Lower Spring Lift	1
30	WL-9-14	Lock Washer $\frac{5}{16}$ Csk. Ext. Shakeproof	8
31	NS-17-31	Jam Nut $\frac{1}{2}$ -20 Hex Fin	1
32	69996	Gib	2
33	70092-1	Shim - Bowl Support (.001" Thk.)	AR
34	70092-2	Shim - Bowl Support (.002" Thk.)	AR
35	70092-3	Shim - Bowl Support (.003" Thk.)	AR
*36	69987-2	Support - Bowl	1
**37	70404-3	Support - Bowl	1

\*D300 &amp; D300T

\*\*D300D &amp; D300DT.



PL-18733

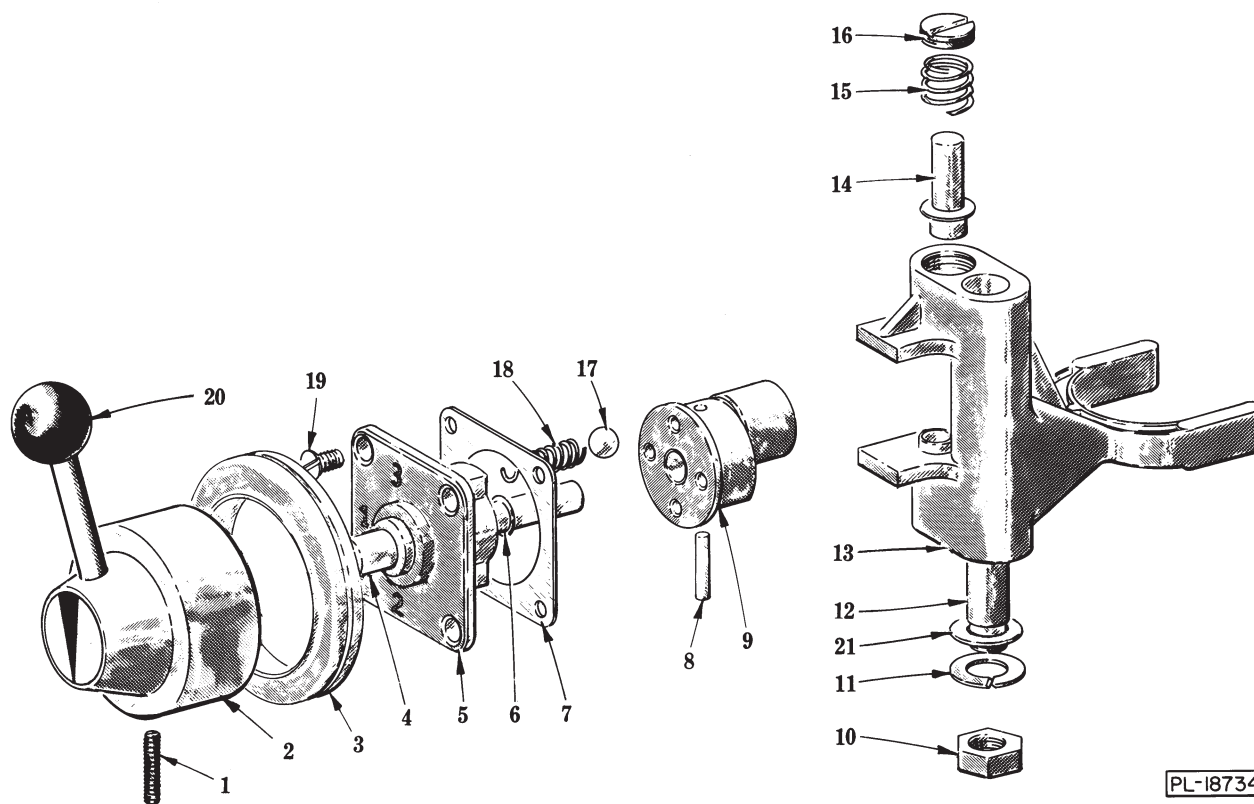
TRANSMISSION CASE

## TRANSMISSION CASE

ILLUS. PL-18733	PART NO.	NAME OF PART <sup>23</sup>	AMT.
**1	70048	Liner - Aluminum Case	1
**2	WL-3-36	Lock Washer 1/4 Light	4
**3	SC-76-1	Cap Screw 1/4-20 x 1/2 Soc. Button Hd	4
4	11800-221	Dowel	2
5	SC-62-27	Cap Screw 3/8-16 x 1 3/4 Hex Hd	4
6	WL-4-2	Lock Washer 3/8 Light	4
*7	SC-113-52	Mach. Screw 10-24 x 1/2 Phil. Truss Hd	1
**8	72189	Mach. Screw "Nylok" Phil. Truss Hd	1
*9	289326	Cap - Trim	1
**10	68723-3	Cap - Trim	1
*11	290505-1	Case - Transmission	1
**12	290505-2	Case - Transmission	1
13	— — —	Motor (See page 19)	1
14	NS-17-14	Jam Nut 3/8-16 Hex Fin	1
15	SC-36-57	Cap Screw 3/8-16 x 1 1/4 Hex Hd	1
16	WL-3-43	Lock Washer 5/16 Light	4
17	SC-36-26	Cap Screw 5/16-18 x 7/8 Hex Hd	4
18	70017	Retainer - Bearing	1
19	SC-15-36	Mach. Screw 10-24 x 5/8 Oval Hd	1
*20	70005-1	Transmission Case Cover Assy	1
**21	70005-2	Transmission Case Cover Assy	1
22	SC-11-74	Mach. Screw 1/4-20 x 5/8 Fil. Hd	4
23	WL-3-37	Lock Washer 1/4 Medium	4
24	64871	Plug - Single Friction	2
25	68721	Bearing Carrier - Transmission Case	1
26	11800-116	Dowel	2
27	70872	Deflector - Roller Clutch Oil	1
28	SC-7-40	Mach. Screw 8-32 x 5/16 Rd. Hd	1
29	WL-7-6	Lock Washer 8 Ext. Shakeproof	2
	79621	Shim (Between Trans. Case & Ped.) (Not Shown)	AR

\*D300 &amp; D300T

\*\*D300D &amp; D300DT.

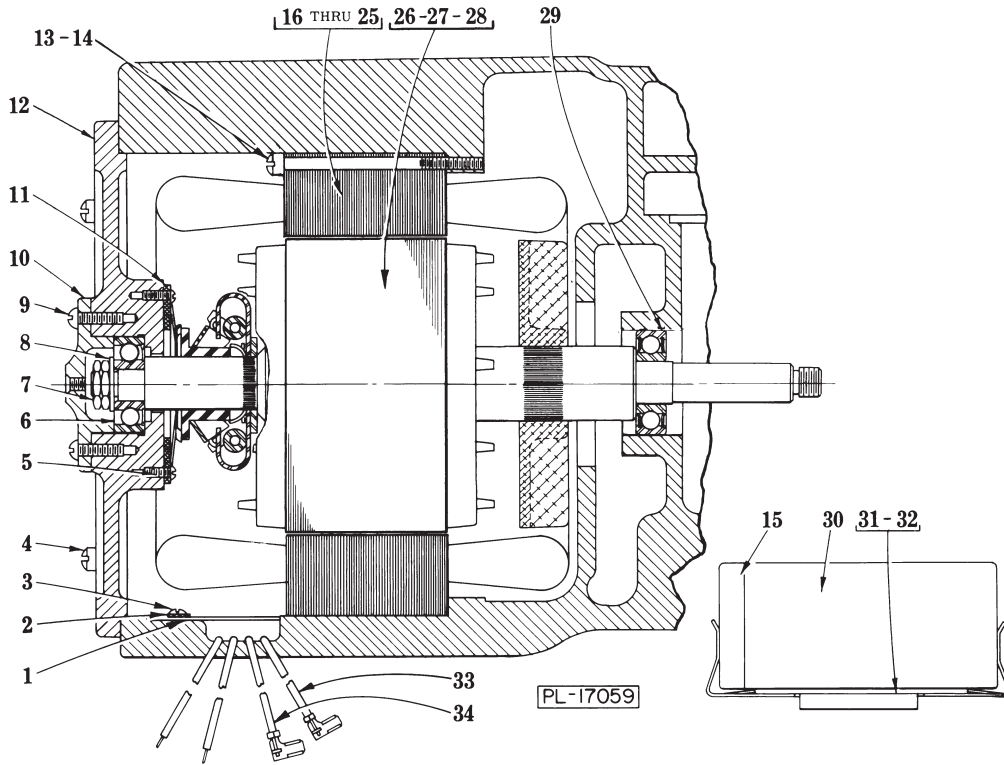


SHIFTER UNIT

PL-18734

## SHIFTER UNIT

ILLUS. PL-18734	PART NO.	NAME OF PART <sup>23</sup>	AMT.
1	SC-47-17	Set Screw 1/4-20 x 3/4 Soc. Hd., Cup Pt	1
2	291272	Shifter Handle Assy. (Incls. items 1 & 20)	1
3	110961	Grommet - Shifter Handle	1
4	114507	Shaft - Shifter	1
5	290115-2	Plate - Index	1
6	67500-44	"O" Ring	1
7	23946	Gasket - Index Plate	1
8	PS-3-8	Spirol Pin 1/8 Dia. x 3/4 Lg	1
9	114506	Cam - Gear Shifter	1
10	NS-13-22	Full Nut 3/8-16 Hex Fin	1
11	WL-4-2	Lock Washer 3/8 Light	1
12	70043	Rod - Shifter Guide	1
13	13160	Yoke - Shifter	1
14	12733	Plunger - Shifter Yoke	2
15	12734	Spring - Shifter Yoke	2
16	12732	Retainer - Shifter Yoke Spring	2
17	BA-2-9	Ball 1/4 Dia	2
18	111170	Spring - Detent	2
19	SC-13-46	Mach. Screw 10-24 x 1/2 Flat Hd	4
20	70085	Knob - Shifter Handle Ball	1
21	WS-6-36	Washer	1



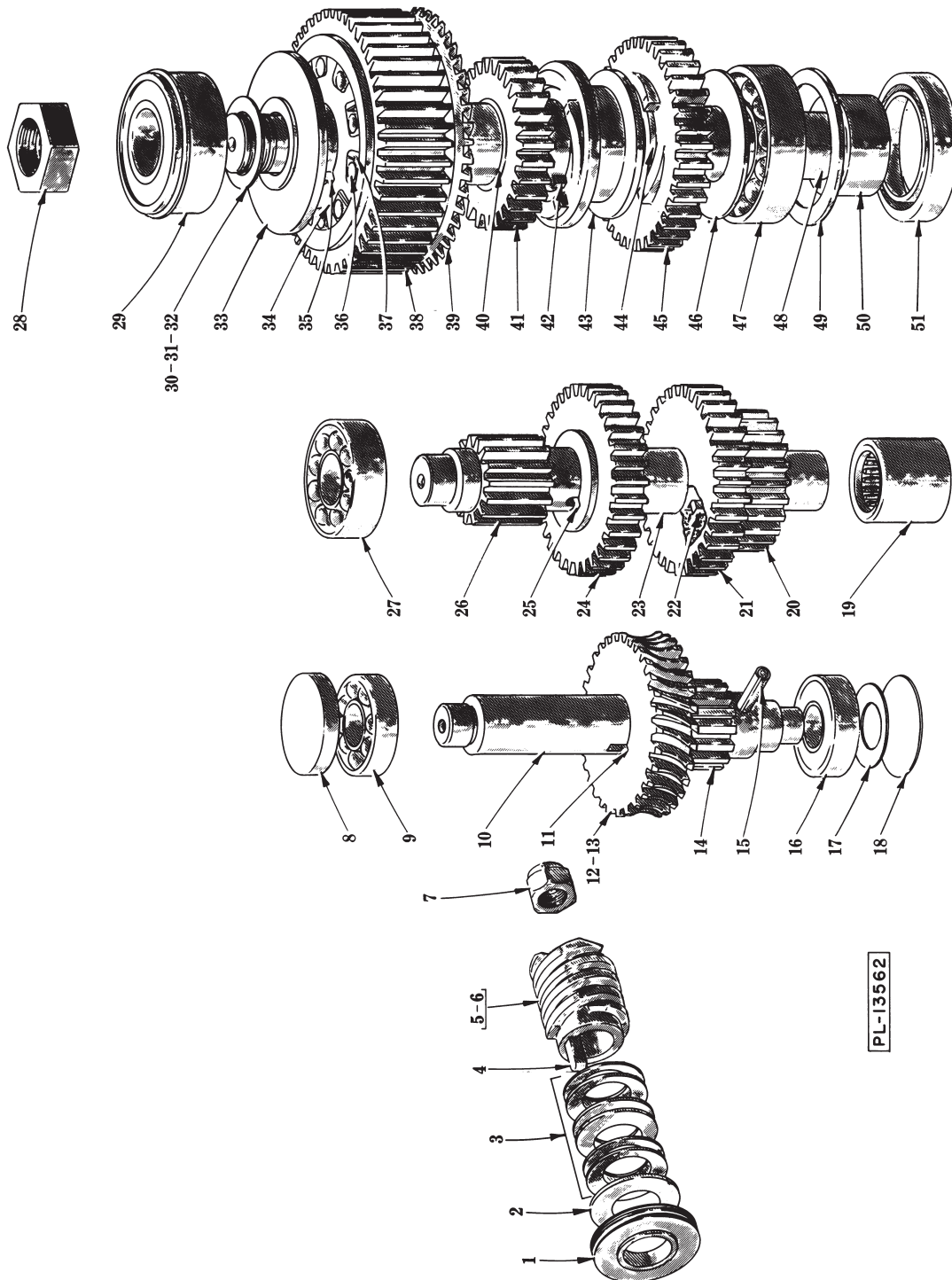
**MOTOR PARTS**

## MOTOR PARTS

ILLUS. PL-17059	PART NO.	NAME OF PART <sup>23</sup>	AMT.
1	70441	Retainer - Lead Wire	1
2	WL-7-7	Lock Washer 8 Ext. Shakeproof	1
3	SC-9-56	Mach. Screw 8-32 x 3/8 Rd. Hd	1
4	SC-11-64	Mach. Screw 12-24 x 1 Fil. Hd	4
*5	SC-9-70	Mach. Screw 6-32 x 1/4 Rd. Hd	2
6	BB-17-5	Ball Bearing N.D. #7601	1
7	11430	Nut - Special	2
8	WS-7-9	Washer	1
9	SC-9-61	Mach. Screw 8-32 x 1/2 Rd. Hd	4
10	70012	Cap - Bearing	1
*11	66085	Switch - Starting (Stationary Part)	1
12	68722	Bracket - Bearing	1
*13	SC-11-32	Mach. Screw 10-24 x 3 Fil. Hd	4
**14	SC-11-28	Mach. Screw 10-24 x 2 1/2 Fil. Hd	4
*15	70486-2	Cap - Capacitor End	1
*16	65477-64-1	Stator Assy. (115 V., 60 Hz.)	1
*17	65477-64-2	Stator Assy. (200 V., 60 Hz.)	1
*18	65477-64-3	Stator Assy. (230 V., 60 Hz.)	1
*19	65477-64-4	Stator Assy. (115 V., 50 Hz.)	1
*20	65477-64-5	Stator Assy. (220 V., 50 Hz.)	1
*21	65478-29-1	Stator Assy. (200 V., 60 Hz.)	1
*22	65478-29-2	Stator Assy. (230 V., 60 Hz.)	1
*23	65478-29-3	Stator Assy. (460 V., 60 Hz.)	1
**24	65478-29-4	Stator Assy. (220 V., 50 Hz.)	1
*25	65478-29-5	Stator Assy. (380 V., 50 Hz.)	1
*26	22275-104	Rotor Assy. (60 Hz.)	1
*27	22275-105	Rotor Assy. (50 Hz.)	1
*28	15747-219	Rotor Assy. (50/60 Hz.)	1
29	BB-18-17	Ball Bearing - Fafnir #H203PP	1
*30	70487-1	Capacitor	1
*31	66621-1	Bracket - Capacitor	1
*32	SD-29-6	Self-Tapping Screw 10-24 x 1/2 Phil. Flat Hd	2
*33	87525-235	Lead (Cap. to Start Switch) (40")	1
*34	87525-236	Lead (Cap. to Start Switch) (47")	1

\*1 Ph.

\*\*3 Ph.

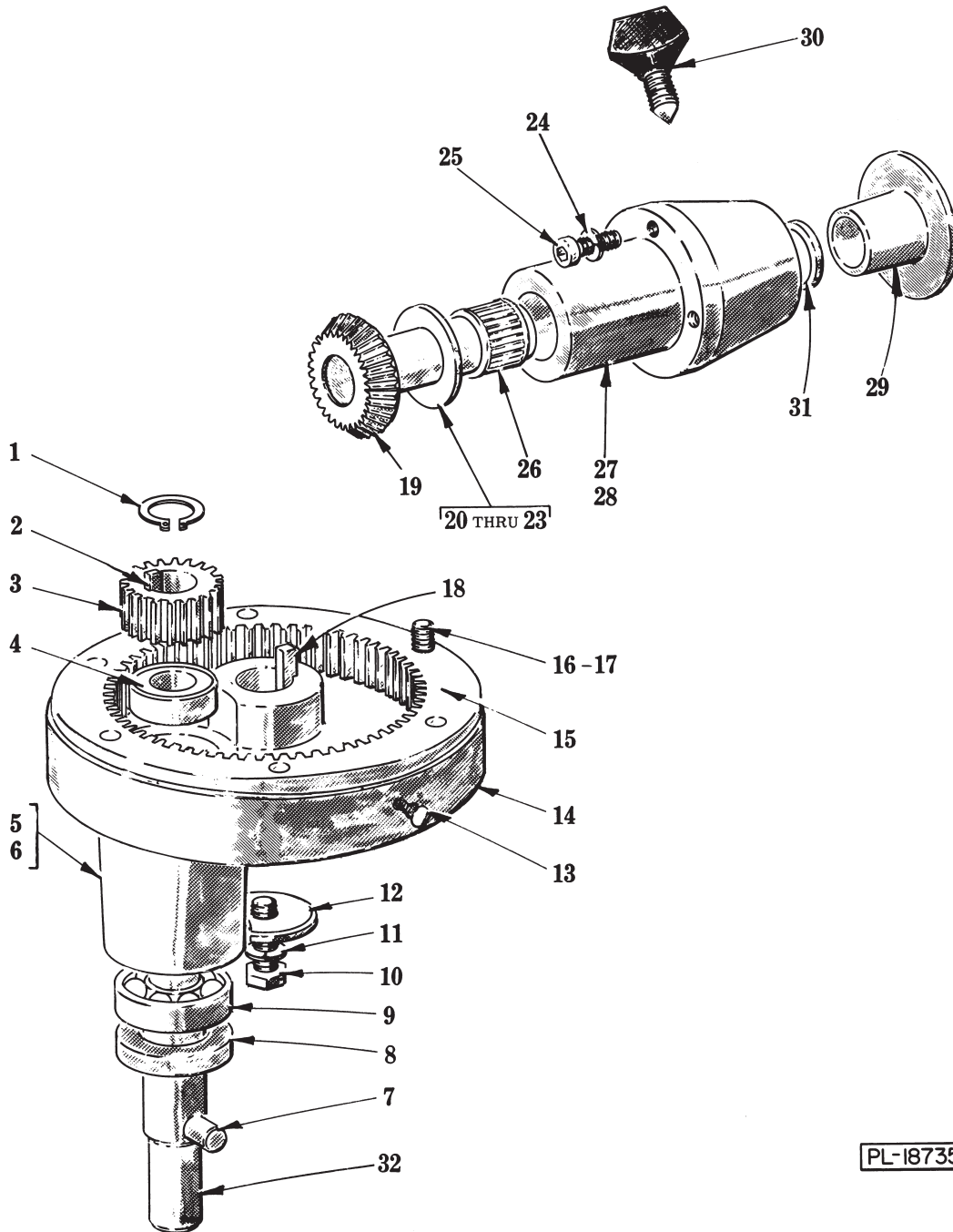


PL-13562

TRANSMISSION

## TRANSMISSION

ILLUS. PL-13562	PART NO.	NAME OF PART <sup>23</sup>	AMT.
1	13174-1	Deflector -Grease	1
2	WS-10-36	Washer	1
3	77840	Washer - Belleville	6
4	12747	!Key	1
5	291221	Worm (5T) (60 Hz.)	1
6	70407	Worm (5T) (50 Hz.)	1
7	NS-32-23	Stop Nut $\frac{7}{16}$ -20 "Flexloc"	1
8	70026	Pusher - Bearing	1
9	BB-17-4	Ball Bearing - ND #7501	1
10	70036	Shaft - Worm Gear	1
11	12430-52	!Key	1
12	70034	Gear - Worm (29T) (60 Hz.)	1
13	70251	Gear - Worm (24T) (50 Hz.)	1
14	70027	Gear - Worm Shaft (14T)	1
15	PS-4-13	Spirol Pin $\frac{1}{4}$ Dia. x $\frac{7}{8}$ Lg	1
16	BB-17-4	Ball Bearing - ND #7501	1
17	70166	Spring - Worm Shaft	1
18	PL-3-14	Plug - Expansion	1
19	BN-2-2	Needle Bearing	1
20	70028	Gear (23T)	1
21	70030	Gear (33T)	1
22	70260	!Key	1
23	89829	Spacer	1
24	89831	Gear (32T)	1
25	89830	!Key	1
26	89818	Shaft - Transmission	1
27	BB-17-9	Ball Bearing - ND #3203	1
28	NS-32-32	Stop Nut $\frac{3}{4}$ -16 L.H. Thd. "Flexloc"	1
29	BB-9-41	Ball Bearing - ND #45504	1
30	WS-12-45	Washer (.002" Thk.)	AR
31	WS-12-46	Washer (.003" Thk.)	AR
32	WS-12-47	Washer (.010" Thk.)	AR
33	70015	Spacer - Upper Planetary Shaft	1
34	70033	Sleeve - Drive	1
35	12430-161	!Key	1
36	70039	Roller - Clutch	10
37	70055	Spring - Roller	10
38	70032	Gear - Roller Clutch (46T)	1
39	70020	Gear - Bevel (46T)	1
40	70042	Bushing - Upper Clutch Gear	1
41	70040	Gear - Upper Clutch (29T)	1
42	12430-55	!Key	2
43	70035-1	Sleeve - Clutch	1
44	70031	Bushing - Lower Clutch Gear	1
45	70095	Gear - Lower Clutch (38T)	1
46	70046	Spacer - Lower Planetary Shaft	1
47	BB-8-33	Ball Bearing - Fafnir #205WD	1
48	71187	Planetary Shaft & Bushing Assy. (Incls. item 44)	1
49	75050	Washer - Spacing (ML-17684, ML-17685, ML-17686 & ML-17687)	AR
50	70016	Spacer - Planetary	1
51	110334	Seal - Planetary	1
	88774	Planetary Shaft & Gear Assy. (Incls. items 33, 34, 35 38 thru 43, 45, 46, 47, 48 & 50)	1
	88781-1	Worm Gear, Shaft & Bearing Assy. (60 Hz.) (Incls. items 9, 10, 11, 12, 14, 15 & 16)	1
	88781-2	Worm Gear, Shaft & Bearing Assy. (50 Hz.) (Incls. items 9, 10, 11, 13, 14, 15 & 16)	1



PL-18735

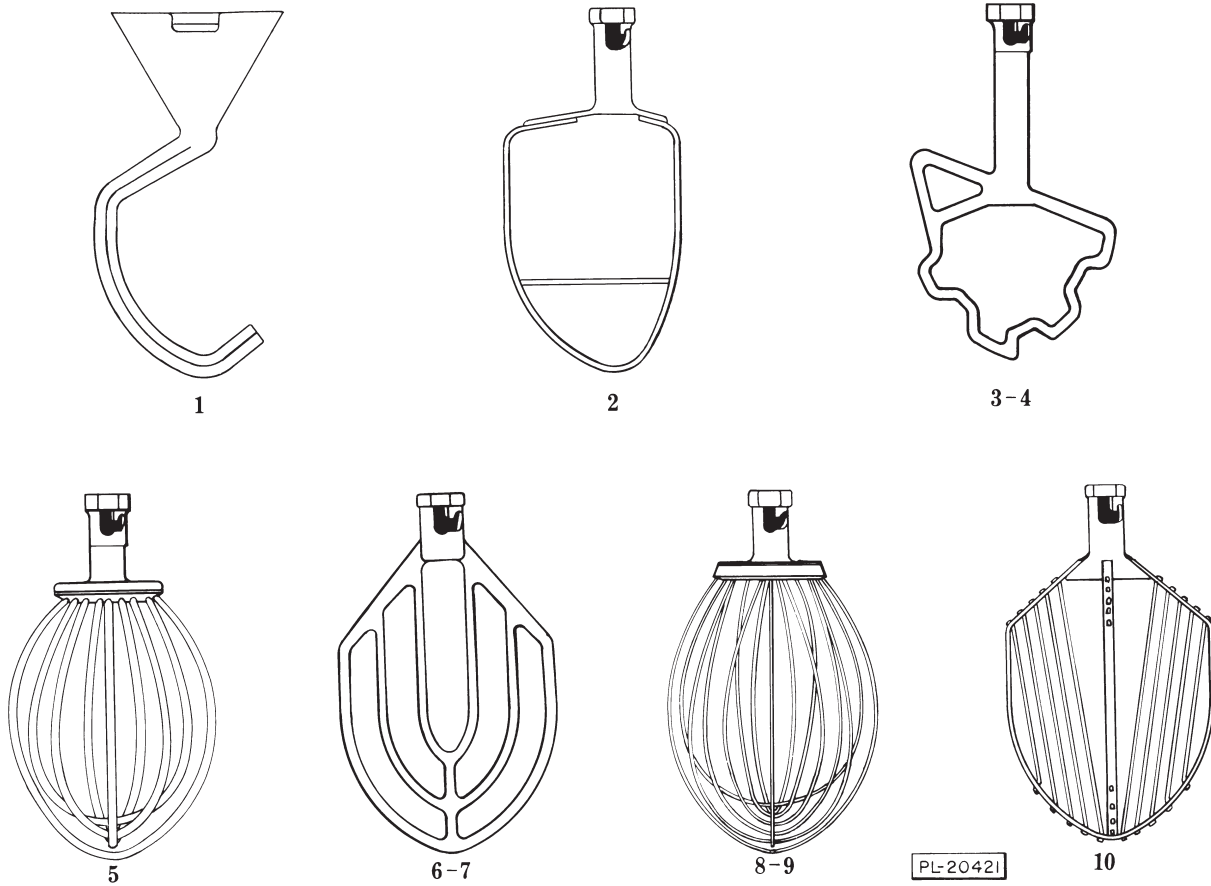
PLANETARY AND ATTACHMENT HUB

## PLANETARY AND ATTACHMENT HUB

ILLUS. PL-18735	PART NO.	NAME OF PART <sup>23</sup>	AMT.
1	RR-4-6	Retaining Ring	1
2	12430-142	!Key	1
3	70014	Pinion - Agitator Shaft (18T)	1
4	BB-20-6	Ball Bearing - ND. #7504	1
*5	69990-1	Planetary	1
**6	69990-2	Planetary	1
7	70019	Pin - Agitator	1
8	110335	Seal - Agitator Shaft	1
9	BB-17-36	Ball Bearing - ND #7505	1
10	SC-62-58	Cap Screw $\frac{3}{8}$ -24 x 1 $\frac{1}{4}$ Hex Hd	1
11	WL-6-27	Lock Washer $\frac{3}{8}$ Light	1
12	70047-1	Washer - Planetary	1
13	70641-11	Thumb Screw - Special	2
14	68719	Cup - Planetary Drip	1
15	69994	Gear - Internal (59T)	1
16	SC-40-16	Cap Screw $\frac{5}{16}$ -18 x 1 Soc. Fil. Hd	6
17	WL-3-48	Lock Washer $\frac{5}{16}$ High Collar	6
18	12430-158	!Key	1
19	75393	Attach. Drive Gear (35T) & Expan. Plug Assy	1
20	70045-2	Washer - Thrust (.119" Thk.)	AR
21	70045-3	Washer - Thrust (.121" Thk.)	AR
22	70045-4	Washer - Thrust (.123" Thk.)	AR
23	70045-5	Washer - Thrust (.127" Thk.)	3
24	WL-3-43	Lock Washer $\frac{5}{16}$ " Light	3
25	SC-40-15	Cap Screw $\frac{5}{16}$ -18 x 1 $\frac{1}{4}$ Soc. Fil. Hd	3
26	BN-2-12	Bearing - Needle	2
*27	70511-3	Attachment Hub & Bearings Assy. (Incls. item 26)	1
**28	70511-2	Attachment Hub & Bearings Assy. (Incls. item 26)	1
29	114824-1	Plug - Attachment Hub	1
30	108197-1	Thumb Screw Assy	1
31	70090	Seal - Attachment Hub	2
32	70339	Agitator Shaft Assy. (Incls. item 7)	1
	*88730-1	Planetary Assy. (Incls. items 1 thru 5, 8, 9 & 32)	1
	**88730-2	Planetary Assy. (Incls. items 1, 2, 3, 4, 6, 8, 9 & 32)	1

\*D300 &amp; D300T

\*\*D300D &amp; D300DT.



**AGITATORS**

ILLUS. PL-20421	PART NO. 30 QT.	PART NO. 20 QT.	NAME OF PART <sup>23</sup>	AMT.
1	65886	23500	"E" Dough Arm	1
2	68093	70764	"P" Pastry Knife	1
3	10582-1	— — —	"S" Sweet Dough (Standard)	1
4	10582-2	— — —	"S" Sweet Dough (Deluxe)	1
5	11016	— — —	"I" Wire Whip (Deluxe)	1
6	23641-1	23642-1	"B" Flat Beater (Standard)	1
7	23641-2	23642-2	"B" Flat Beater (Deluxe)	1
8	23525-1	23526-1	"D" Wire Whip (Standard)	1
9	23525-2	23526-2	"D" Wire Whip (Deluxe)	1
10	123717	123724	"C" Wing Whip	1
	119679	— — —	"ED" Dough Arm - Spiral (Not Shown)	1