

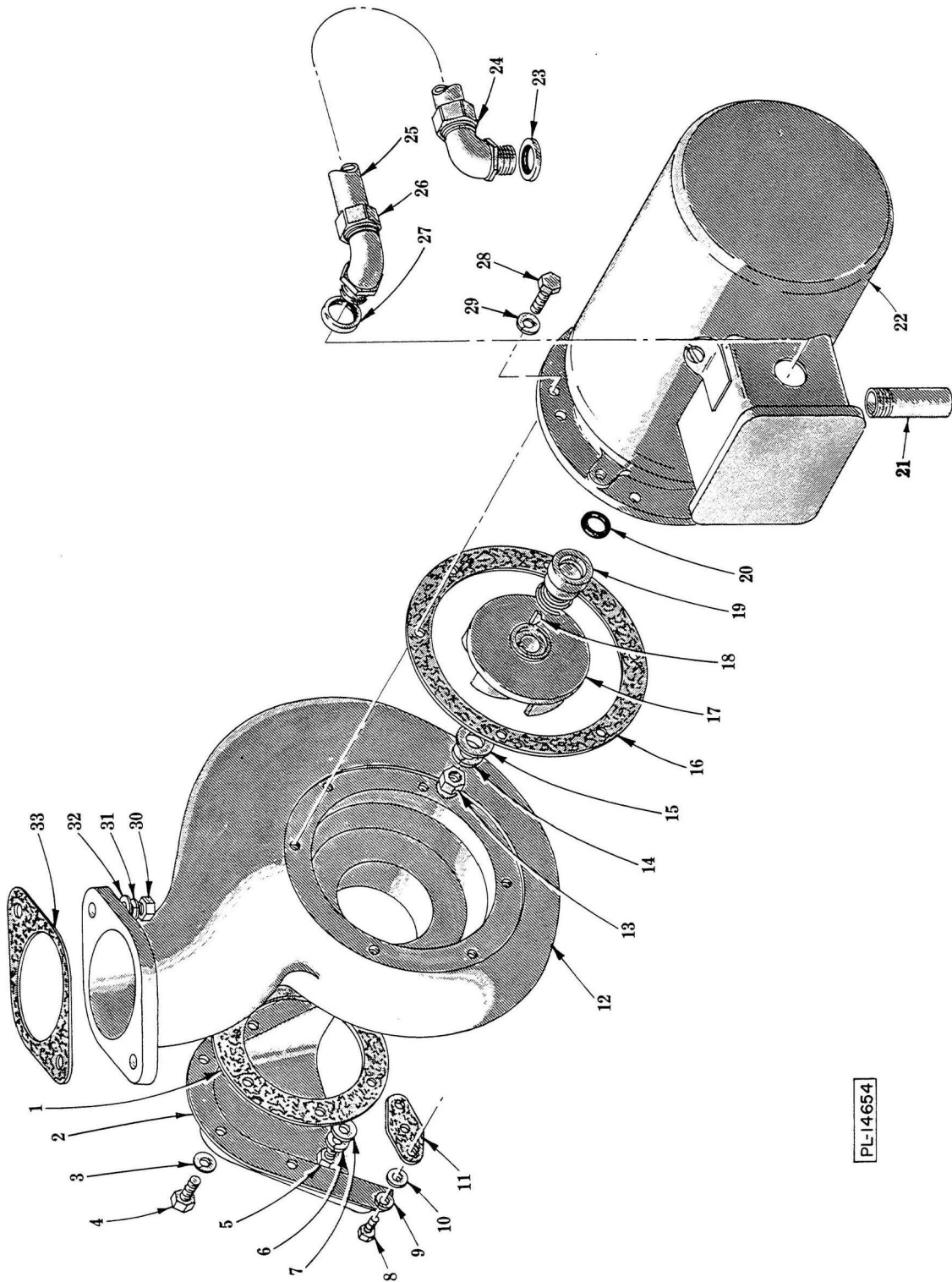


CATALOG OF REPLACEMENT PARTS

FT-600 & FT-700 SERIES DISHWASHERS

44" POWER WASH UNIT (INCLUDES MOTOR PARTS)

ML-19253	FT-600 (R-L)
ML-19408	FT-600 (L-R)
ML-18539	FT-700 (R-L)
ML-19407	FT-700 (L-R)



PL-14654

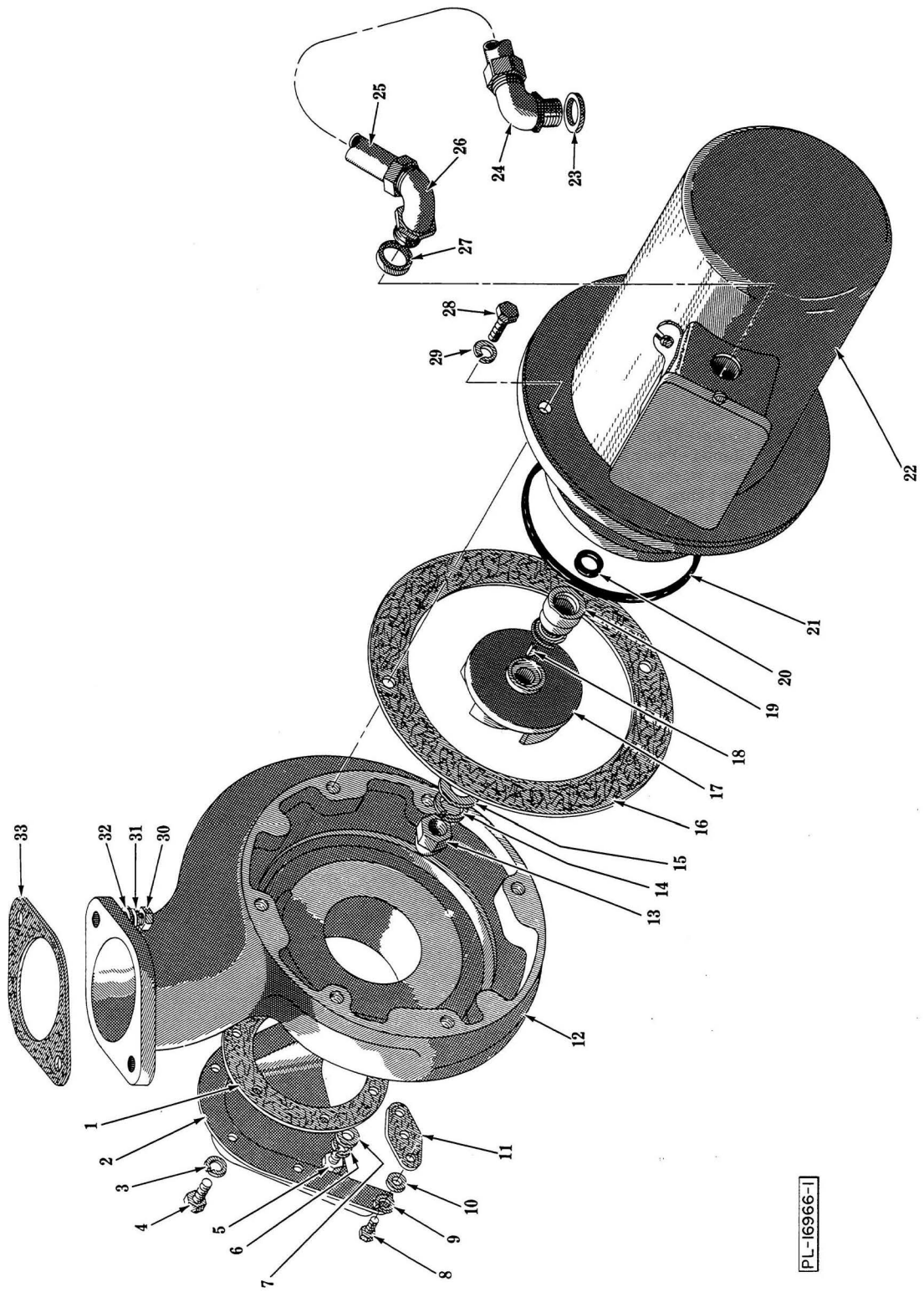
CS-120 MOTOR AND PUMP

CS-120 MOTOR AND PUMP

PRIOR TO SERIAL NOS.: FT-600 L. to R. 12-053-127
 FT-600 R. to L. 12-053-348
 FT-700 L. to R. 12-053-129
 FT-700 R. to L. 12-053-349

ILLUS. PL-14654	PART NO.	NAME OF PART	AMT.
1	C-119050	Gasket - Pump Intake	1
2	C-118960	Shroud - Pump Intake	1
3	WL-6-22	Lock Washer - 5/16" Light	4
4	SC-41-11	Cap Screw - 5/16"-18 x 3/4" Hex Hd	4
5	SC-41-11	Cap Screw - 5/16"-18 x 3/4" Hex Hd	2
6	WL-6-22	Lock Washer - 5/16" Light	2
7	WS-17-8	Washer	2
8	SC-41-5	Cap Screw - 1/4"-20 x 5/8" Hex Hd	2
9	WL-6-17	Lock Washer - 1/4" Medium	2
10	WS-3-48	Washer	2
11	B-119051	Gasket - Pump Drain Hole	1
12	E-121016	Shell - Pump	1
13	NS-24-6	Acorn Nut - 7/16"-20	1
14	WL-6-32	Lock Washer - 7/16" Light	1
15	WS-21-1	Washer	1
*16	B-119265	Gasket Kit (Motor to Pump) (One Set Consists of: 1 Blue (.005" Thk.); 1 Brown (.010" Thk.); and 1 Yellow (.020" Thk.))	1 Set
17	D-121567-1	Impeller (60 Hz.)	1
18	KW-3-3	Key - #404 Woodruff	1
19	A-104329	Shaft Seal Assy. - 5/8"	1
20	D-67500-7	"O" Ring	1
21	FP-64-15	Nipple - 3/8" x 2-1/4" Lg. (S.T.O.E.)	1
22	ML-18955	Motor (Give Elec. Spec.)	1
23	FE-8-11	3/4" Gasket Assy	1
24	FE-8-25	Connector - 90° "Sealtite" (3/4" Male Thd. x 3/4" Flex. Cnd.)	1
25	P-77657-23	Conduit - 3/4" x 33" (Waterproof)	1
26	FE-8-25	Connector - 90° "Sealtite" (3/4" Male Thd. x 3/4" Flex. Cnd.)	1
27	FE-8-11	3/4" Gasket Assy	1
28	SC-41-11	Cap Screw - 5/16"-18 x 3/4" Hex Hd	6
29	WL-6-22	Lock Washer - 5/16" Light	6
30	SC-41-15	Cap Screw - 5/16"-18 x 1-1/4" Hex Hd	2
31	WL-6-22	Lock Washer - 5/16" Light	2
32	WS-5-32	Washer	2
33	C-119054	Gasket - Pump Discharge	1
	B-276677-1	Motor & Impeller Assy. (3 Ph.) (Incls. items #13, 14, 15, 17, 18, 19 20 & 22)	1

*Select gasket to obtain .005" to .015" clearance between pump and impeller.



PL-16966-1

CS-120A MOTOR AND PUMP

CS-120A MOTOR AND PUMP

STARTING SERIAL NOS.: FT-600 L. to R. 12-053-127

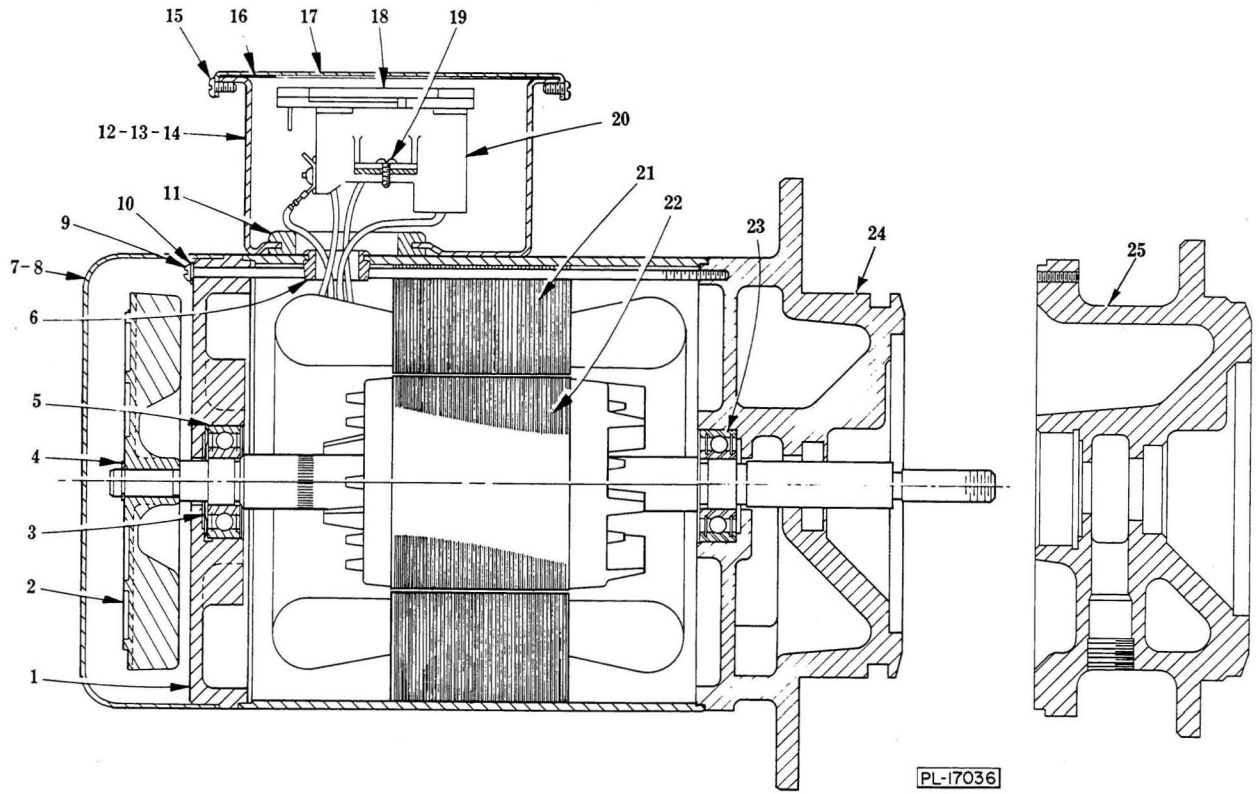
FT-600 R. to L. 12-053-348

FT-700 L. to R. 12-053-129

FT-700 R. to L. 12-053-349

ILLUS. PL-16966-1	PART NO.	NAME OF PART	AMT.
1	C-119050	Gasket - Pump Intake	1
2	C-118960	Shroud - Pump Intake	1
3	WL-6-22	Lock Washer - 5/16" Light	4
4	SC-41-11	Cap Screw - 5/16"-18 x 3/4" Hex Hd	4
5	SC-41-11	Cap Screw - 5/16"-18 x 3/4" Hex Hd	2
6	WL-6-22	Lock Washer - 5/16" Light	2
7	WS-17-8	Washer	2
8	SC-41-5	Cap Screw - 1/4"-20 x 5/8" Hex Hd	2
9	WL-6-17	Lock Washer - 1/4" Medium	2
10	WS-3-48	Washer	2
11	B-119051	Gasket - Pump Drain Hole	1
12	E-276627	Shell - Pump	1
13	NS-24-6	Acorn Nut - 7/16"-20	1
14	WL-6-32	Lock Washer - 7/16" Light	1
15	WS-21-1	Washer	1
*16	B-277836	Gasket Kit (Motor To Pump) (One Set Consists of: 1 Blue (.005" Thk.); 1 Brown (.010" Thk.); and 1 Yellow (.020" Thk.))	1 Set
17	D-121567-1	Impeller (60 Hz.)	1
18	KW-3-3	Key - #404 Woodruff	1
19	A-104329	Shaft Seal Assy. - 5/8"	1
20	D-67500-7	"O" Ring	1
21	D-67500-97	"O" Ring	1
22	ML-34229	Motor (Give Elec. Spec.)	1
23	FE-8-11	3/4" Gasket Assy	1
24	FE-8-25	Connector - 90° "Sealtite" (3/4" Male Thd. x 3/4" Flex. Cnd.)	1
25	P-77657-23	Conduit - 3/4" x 33" (Waterproof)	1
26	FE-8-25	Connector - 90° "Sealtite" (3/4" Male Thd. x 3/4" Flex. Cnd.)	1
27	FE-8-11	3/4" Gasket Assy	1
28	SC-41-29	Cap Screw - 3/8"-16 x 7/8" Hex Hd	2
29	WL-6-27	Lock Washer - 3/8" Light	2
30	SC-41-15	Cap Screw - 5/16"-18 x 1-1/4" Hex Hd	2
31	WL-6-22	Lock Washer - 5/16" Light	2
32	WS-5-32	Washer	2
33	C-119054	Gasket - Pump Discharge	1
	B-277813-1	Motor & Impeller Assy. (3 Ph.) (Incls. items #13, 14, 15 & 17 thru 22)	1

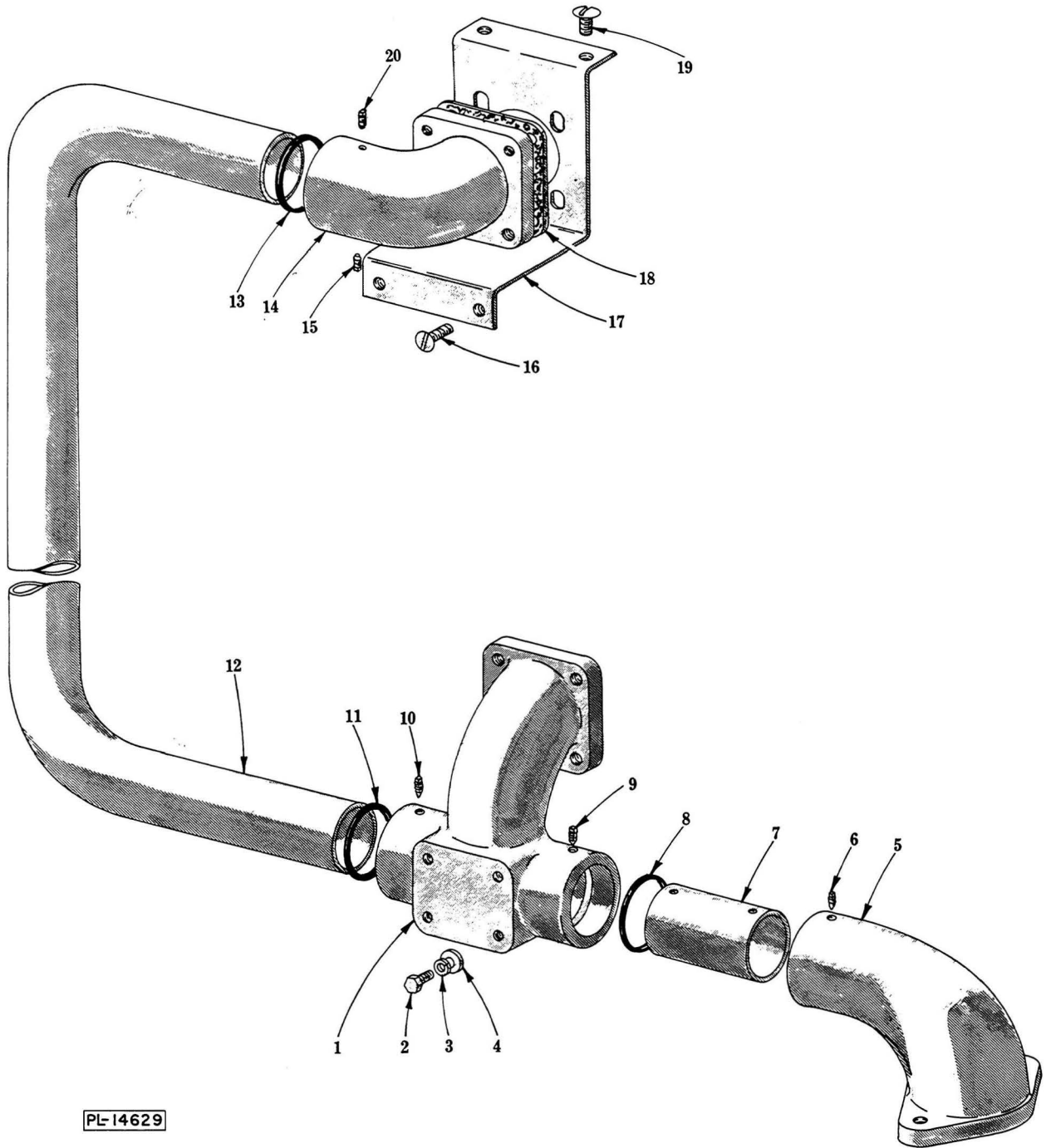
*Select gasket to obtain .005" to .015" clearance between pump and impeller.



MOTOR UNIT

MOTOR UNIT (3 PHASE)
(CS-120)
(CS-120A)

ILLUS. PL-17036	PART NO.	NAME OF PART	AMT.
1	D-114379-2	Bracket - Bearing (Fan End)	1
2	D-111493-1	Fan - Ventilating	1
3	SL-2-4	Loading Spring - N.D. #S-17	1
4	RR-4-17	Retaining Ring	1
5	BB-20-18	Ball Bearing - N.D. #77503	1
6	M-79118	Bushing - Snap	1
7	R-77067	Cover - Motor End	1
8	SC-9-65	Mach. Screw - #8-32 x 1/4" Rd. Hd	2
9	SC-60-68	Mach. Screw - #10-24 x 7-1/2" Rd. Hd	4
10	WL-8-13	Lock Washer - #10 Int. Shakeproof	4
11	M-60395	Grommet	1
12	D-113403	Box - Terminal	1
13	SD-15-27	Self-Tapping Screw - #10-24 x 5/16" Pan Hd. "Taptite"	2
14	WL-7-12	Lock Washer - #10 Ext. Shakeproof	2
15	SD-12-45	Self-Tapping Screw - #8-32 x 5/16" Pan Hd., Type 23	2
16	B-114811	Gasket - Terminal Box	1
17	C-113405	Cover - Terminal Box	1
18	C-113417	Connector - Block Assy	1
19	SD-12-45	Self-Tapping Screw - #8-32 x 5/16" Pan Hd., Type 23	2
20	C-113552	Terminal Block Base Assy	1
21	D-65478-101-1	Stator Assy	1
22	C-15747-280	Rotor Assy	1
23	BB-20-5	Ball Bearing - N.D. #7503	1
24	E-121191-2	Bracket - Bearing (Pump End) (CS-120A ONLY)	1
25	E-118969-2	Bracket - Bearing (Pump End) (CS-120 ONLY)	1
	B-118070-1	Plug (Not Shown) (Use with items #24 & 25)	1

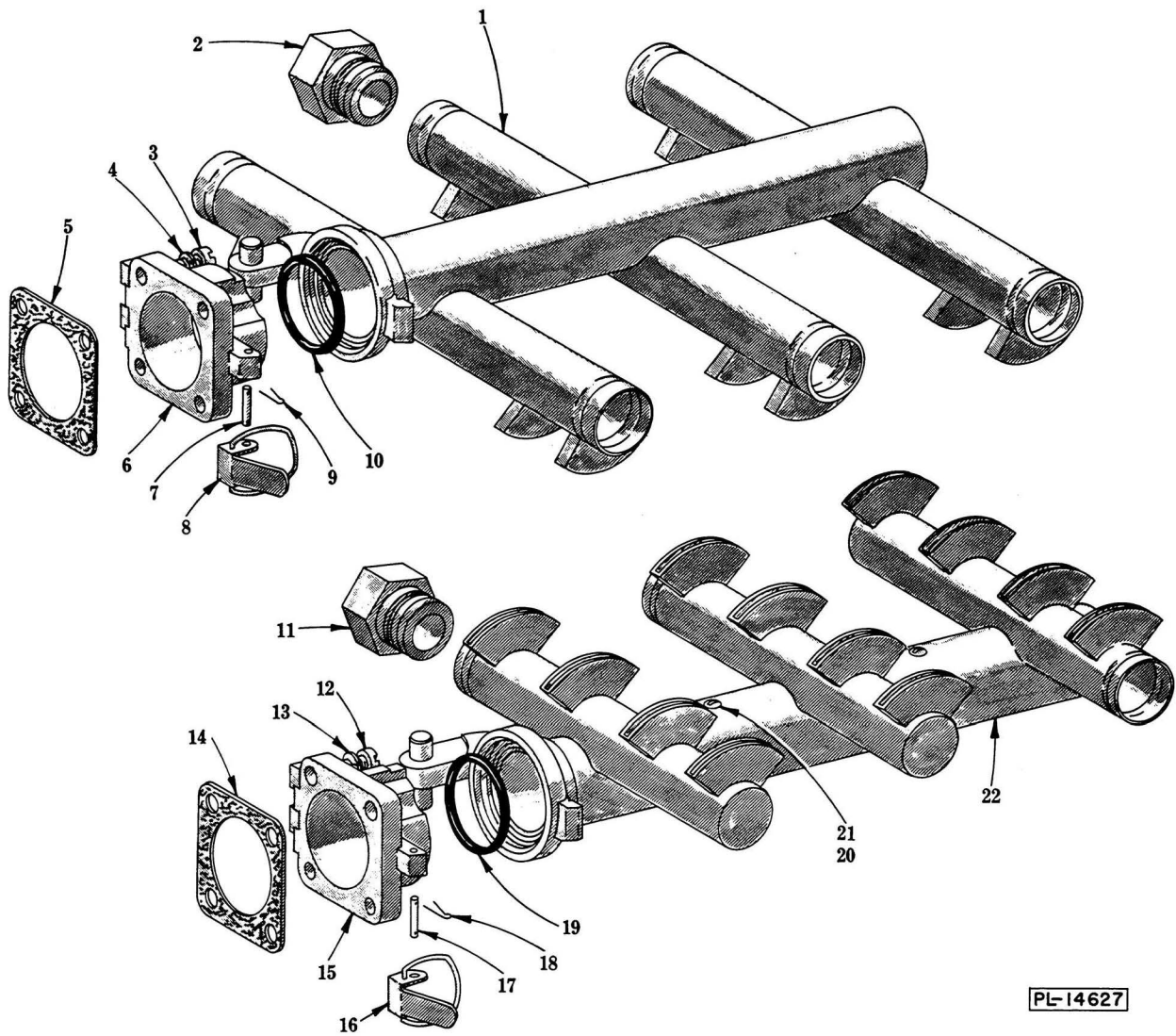


PL-14629

WASH PIPING UNIT

WASH PIPING UNIT

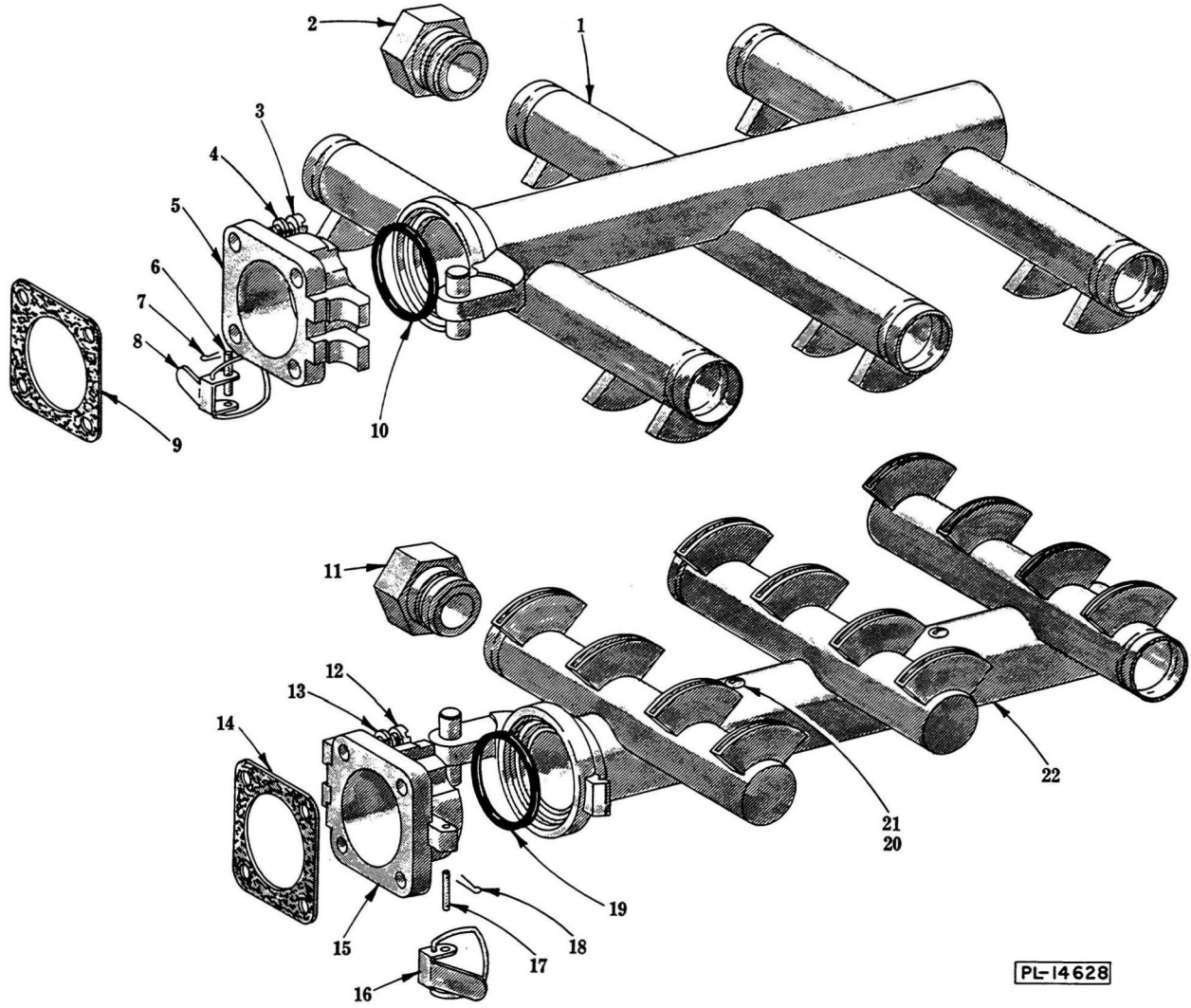
ILLUS. PL-14629	PART NO.	NAME OF PART	AMT.
1	E-121312	Tee - Wash	1
2	SC-41-5	Cap Screw - 1/4"-20 x 5/8" Hex Hd	4
3	WL-6-16	Lock Washer - 1/4" Light	4
4	WS-17-6	Washer	4
5	D-121311	Ell - Lower Wash	1
6	SC-110-40	Set Screw - #10-24 x 5/8" Sq. Hd., Cup Pt	1
7	B-119531	Tube - Connector	1
8	D-67500-57	"O" Ring	2
9	SC-110-40	Set Screw - #10-24 x 5/8" Sq. Hd., Cup Pt	1
10	SC-110-40	Set Screw - #10-24 x 5/8" Sq. Hd., Cup Pt	1
11	D-67500-54	"O" Ring	1
12	D-119530-1	Pipe - Wash	1
13	D-67500-54	"O" Ring	1
14	D-121098	Ell - Upper Wash	1
15	SC-110-40	Set Screw - #10-24 x 5/8" Sq. Hd., Cup Pt	1
16	SC-22-44	Mach. Screw - 5/16"-18 x 5/8" Flat Hd	2
17	E-122642-1	Upper Wash Ell Bracket Assy	1
18	B-107477	Gasket - Upper Wash Ell	1
19	SC-53-15	Mach. Screw - 5/16"-18 x 1/2" Truss Hd	2
20	SC-109-73	Set Screw - #10-24 x 3/16" Sq. Hd., Cup Pt	1



WASH ARM UNIT

**WASH ARM UNIT
(L. TO R. OPERATION)**

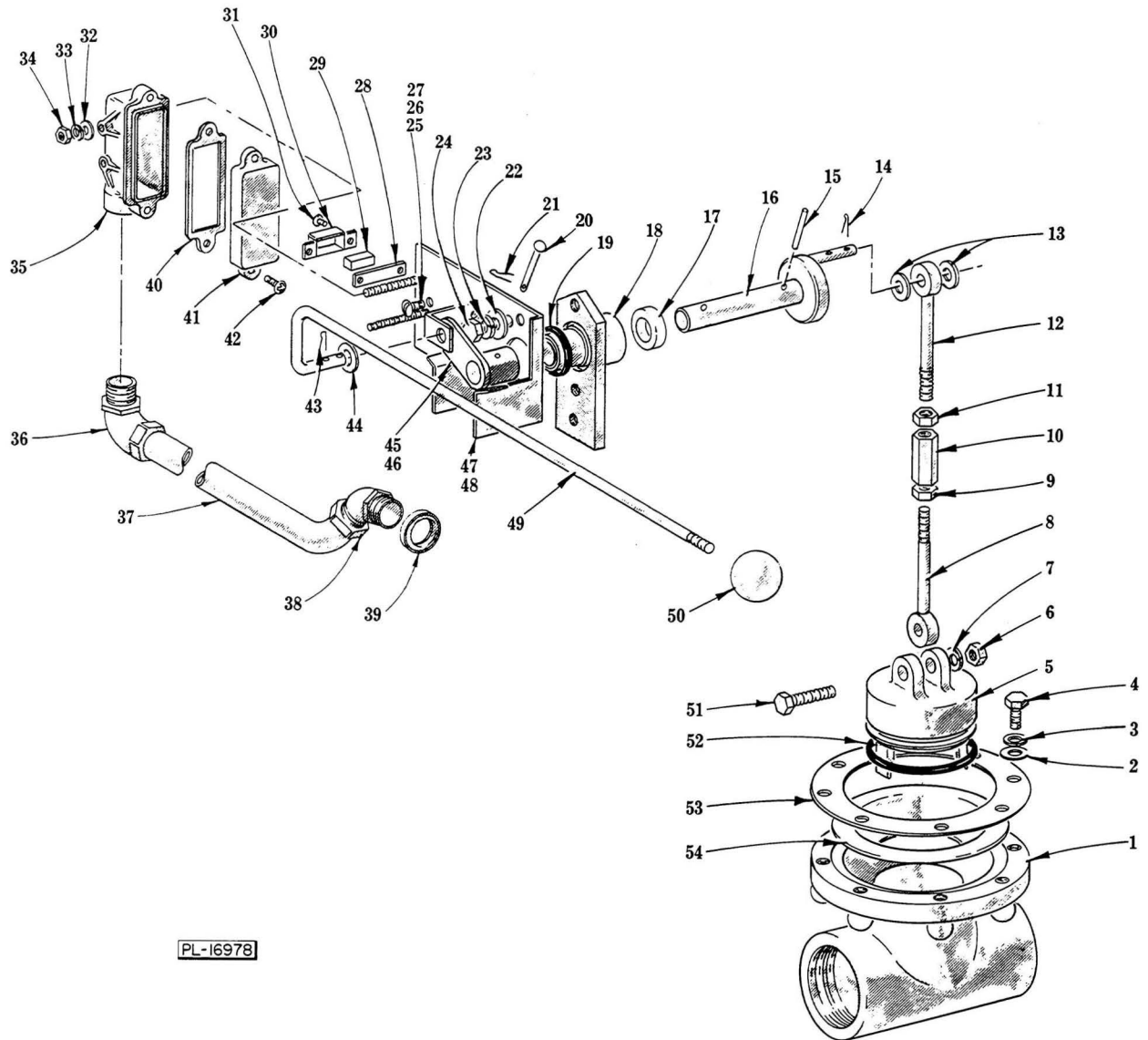
ILLUS. PL-14627	PART NO.	NAME OF PART	AMT.
1	E-106883	Upper Wash Arm Assy	1
2	B-106769	End Cap - Hex	6
3	SC-24-22	Mach. Screw - 3/8"-16 x 7/8" Fil. Hd	4
4	WL-6-29	Lock Washer - 3/8" High Collar	4
5	B-107477	Gasket - Hinge Casting	1
6	R-83073	Hinge - Upper Discharge Connection	1
7	M-83076	Pin - Bracket	1
8	B-276030	Lever Bracket & Clamp Assy	1
9	PC-5-25	Cotter Pin - 1/32" x 1/2"	2
10	D-67500-49	"O" Ring	1
11	B-106769	End Cap - Hex	3
12	SC-24-22	Mach. Screw - 3/8"-16 x 7/8" Fil. Hd	4
13	WL-6-29	Lock Washer - 3/8" High Collar	4
14	B-107477	Gasket - Hinge Casting	1
15	R-83084-3	Hinge - Lower Discharge Connection	1
16	B-276030	Lever Bracket & Clamp Assy	1
17	M-83076	Pin - Bracket	1
18	PC-5-25	Cotter Pin - 1/32" x 1/2"	2
19	D-67500-49	"O" Ring	1
20	M-79168	Baffle - Lower Wash Pipe	2
21	SC-69-6	Mach. Screw - 1/4"-20 x 3/8" Rd. Hd. "Nyllok"	2
22	D-122981	Lower Wash Arm Assy. (Incls. items #20 & 21)	1
	E-106916	Upper Wash Arm Assy. (Incls. items #1, 2 & 10)	1
	D-120760	Lower Wash Arm Assy. (Incls. items #11, 19 & 22)	1



WASH ARM UNIT

**WASH ARM UNIT
(R. TO L. OPERATION)**

ILLUS. PL-14628	PART NO.	NAME OF PART	AMT.
1	E-106882	Upper Wash Arm Assy	1
2	B-106769	End Cap - Hex	6
3	SC-24-22	Mach. Screw - 3/8"-16 x 7/8" Fil. Hd	4
4	WL-6-29	Lock Washer - 3/8" High Collar	4
5	R-83073	Hinge - Upper Discharge Connection	1
6	M-83076	Pin - Bracket	1
7	PC-5-25	Cotter Pin - 1/32" x 1/2"	2
8	B-276030	Lever Bracket & Clamp Assy	1
9	B-107477	Gasket - Hinge Casting	1
10	D-67500-49	"O" Ring	1
11	B-106769	End Cap - Hex	3
12	SC-24-22	Mach. Screw - 3/8"-16 x 7/8" Fil Hd	4
13	WL-6-29	Lock Washer - 3/8" High Collar	4
14	B-107477	Gasket - Hinge Casting	1
15	R-83084-3	Hinge - Lower Discharge Connection	1
16	B-276030	Lever Bracket & Clamp Assy	1
17	M-83076	Pin - Bracket	1
18	PC-5-25	Cotter Pin - 1/32" x 1/2"	2
19	D-67500-49	"O" Ring	1
20	M-79168	Baffle - Lower Wash Pipe	2
21	SC-69-6	Mach. Screw - 1/4"-20 x 3/8" Rd. Hd. "Nylok"	2
22	D-122981	Lower Wash Arm Assy. (Incls. items #20 & 21)	1
	E-106924	Upper Wash Arm Assy. (Incls. items #1, 2 & 10)	1
	D-120760	Lower Wash Arm Assy. (Incls. items #11, 19 & 22)	1



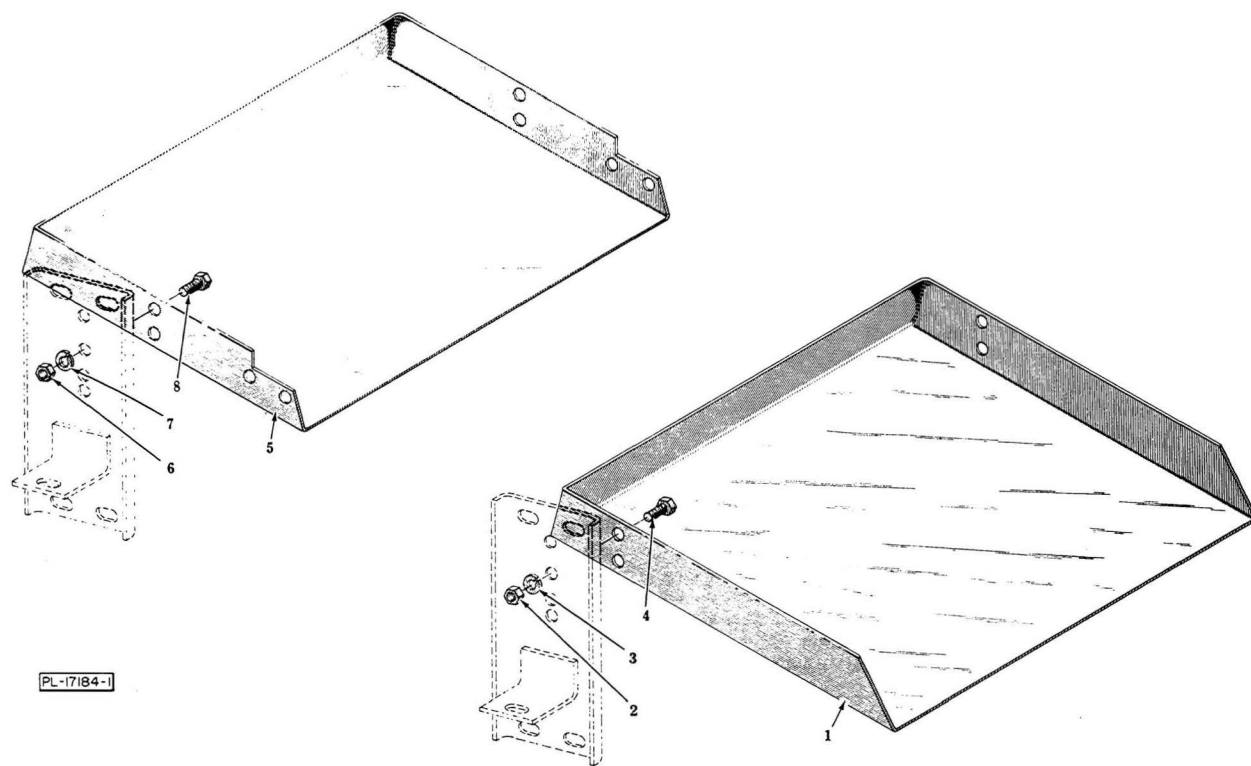
PL-16978

DRAIN UNIT

DRAIN UNIT

ILLUS. PL-16978	PART NO.	NAME OF PART	AMT.
1	A-107164	Drain Valve Body & Sleeve Assy. (Incls. item #54)	1
2	WS-6-44	Washer	8
3	WL-6-27	Lock Washer - 3/8" Light	8
4	SC-41-28	Cap Screw - 3/8"-16 x 3/4" Hex Hd	8
5	A-108296	Plug - Drain	1
6	NS-15-11	Full Nut - 5/16"-18 Hex Fin	1
7	WL-6-22	Lock Washer - 5/16" Light	1
8	P-65958	Pull Rod Assy	1
9	NS-18-6	Jam Nut - 5/16"-18 Hex Fin	1
10	V-16269	Nut - Pull Rod Adjusting	1
11	NS-18-6	Jam Nut - 5/16"-18 Hex Fin	1
12	P-65958	Pull Rod Assy	1
13	WS-17-8	Washer	2
14	PC-5-2	Cotter Pin - 1/16" x 1/2"	2
15	RP-3-22	Pollpin - 3/16" Dia. x 1-1/2" Lg	1
16	B-119693	Drain Lift Pin & Disc Assy	1
17	A-119682	Seal - Shaft	1
18	B-119716	Bracket, Seal & Bearing Assy. (Incls. item #17)	1
19	D-67500-69	"O" Ring	1
20	M-74053	Pin - Drain Shaft Coupling	1
21	PC-4-7	Cotter Pin - 1/16" x 5/8"	1
22	WS-17-21	Washer	2
23	WL-6-22	Lock Washer - 5/16" Light	2
24	SC-41-10	Cap Screw - 5/16"-18 x 5/8" Hex Hd	2
25	SC-53-5	Mach. Screw - #10-24 x 3/8" Truss Hd	1
26	WL-6-6	Lock Washer - #10 Light	1
27	NS-11-18	Mach. Nut - #10-24 Hex	1
*28	B-121097	Shim - Magnet Retainer	1
*29	B-111941	Magnet	1
*30	C-120332	Retainer - Magnet	1
*31	SC-21-1	Mach. Screw - #4-40 x 1/4" Rd. Hd	2
*32	WS-19-16	Washer	2
*33	WL-7-12	Lock Washer - #10 Ext. Shakeproof	2
*34	NS-9-22	Mach. Nut - #10-24 Hex	2
*35	D-124486	Housing - Interlock Switch	1
*36	FE-7-3	Connector - 90° "Sealtite" (1/2" Male Thd. x 3/8" Flex. Cnd.)	1
*37	P-68190-20	Conduit - 3/8" x 6-1/2" (Waterproof)	1
*38	FE-7-2	Connector - 45° "Sealtite" (1/2" Male Thd. x 3/8" Flex. Cnd.)	1
*39	FE-8-10	1/2" Gasket Assy	1
*40	B-106803	Gasket - Interlock Switch	1
*41	B-114922	Interlock Switch & Cover Assy	1
*42	SD-25-12	Self-Tapping Screw - #8-18 x 1/2" Phil. Pan Hd. "Shakeproof"	2
43	PC-5-8	Cotter Pin - 3/32" x 5/8"	2
44	WS-6-44	Washer	2
*45	C-121066-2	Connecting Link Assy	1
46	B-121133	Connecting Link Assy. (W/O Auto. Fill) (Not Shown)	1
*47	C-121054-2	Connecting Link Bracket Assy	1
48	C-121054-4	Connecting Link Bracket Assy. (W/O Auto. Fill)	1
49	D-121049-1	Rod - Drain	1
50	M-60468	Knob (Drain Rod)	1
51	SC-41-17	Cap Screw - 5/16"-18 x 1-1/2" Hex Hd	1
52	D-67500-16	"O" Ring	1
53	M-12077	Gasket - Drain Valve	1
54	C-106283	Sleeve - Drain Valve Body	1
	*C-120366	Interlock Switch Assy. (Incls. items #35, 40, 41 & 42)	1

*Use with Automatic Fill.



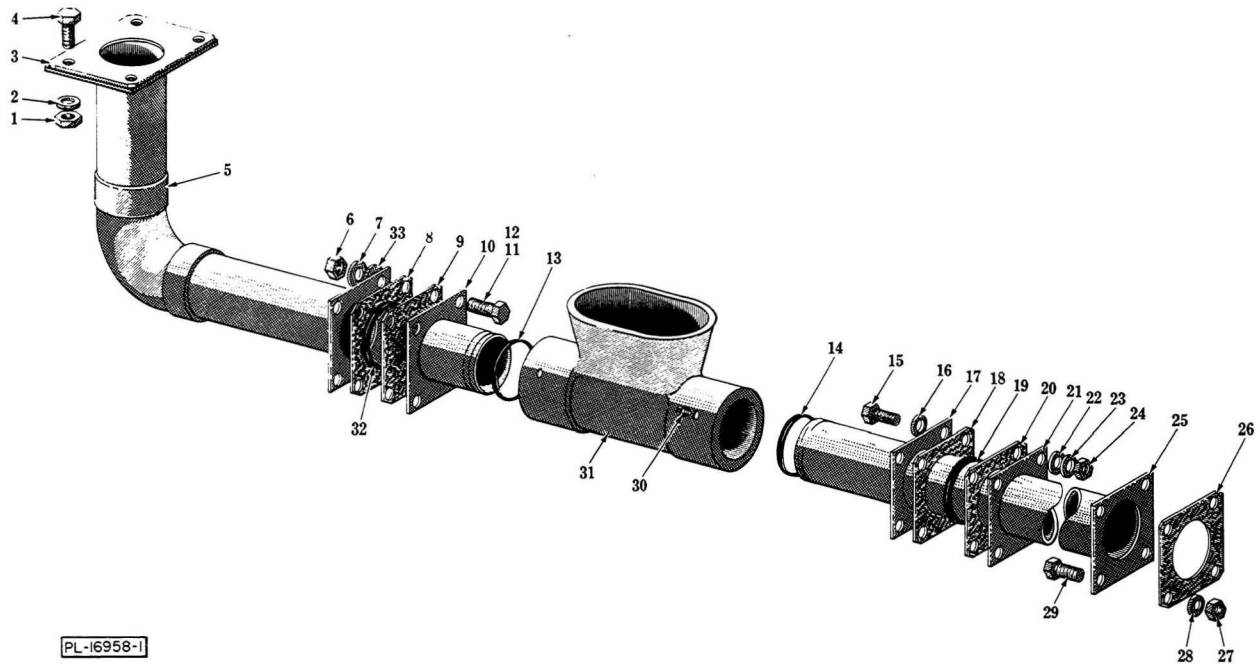
DRAIN BACK PANS

DRAIN BACK PANS

ILLUS. PL-17184-1	PART NO.	NAME OF PART	AMT.
1	D-276928	Pan - Drain Back (Entrance End)	1
2	NS-15-11	Full Nut - 5/16"-18 Hex Fin	4
3	WL-6-22	Lock Washer - 5/16" Light	4
4	SC-41-10	Cap Screw - 5/16"-18 x 5/8" Hex Hd	4
*5	D-119790	Pan - Drain Back (Discharge End)	1
6	NS-15-11	Full Nut - 5/16"-18 Hex Fin	4
7	WL-6-22	Lock Washer - 5/16" Light	4
8	SC-41-10	Cap Screw - 5/16"-18 x 5/8" Hex Hd	4

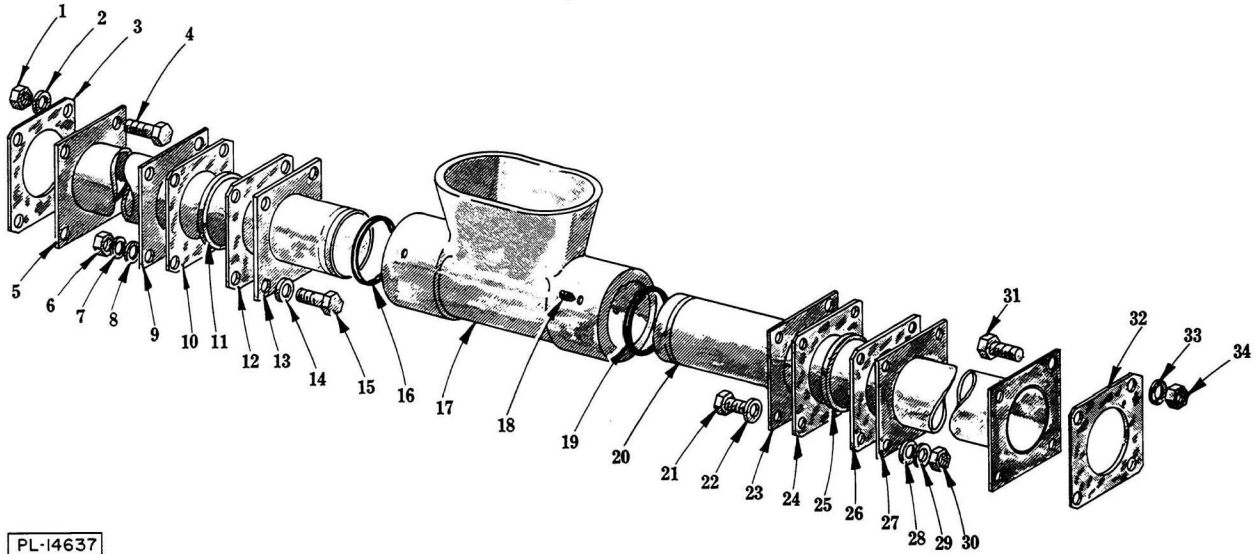
*FT-700.

44 POWER WASH REPLACEMENT PARTS



**FLOW BACK PIPING
(FT-600 WASH)**

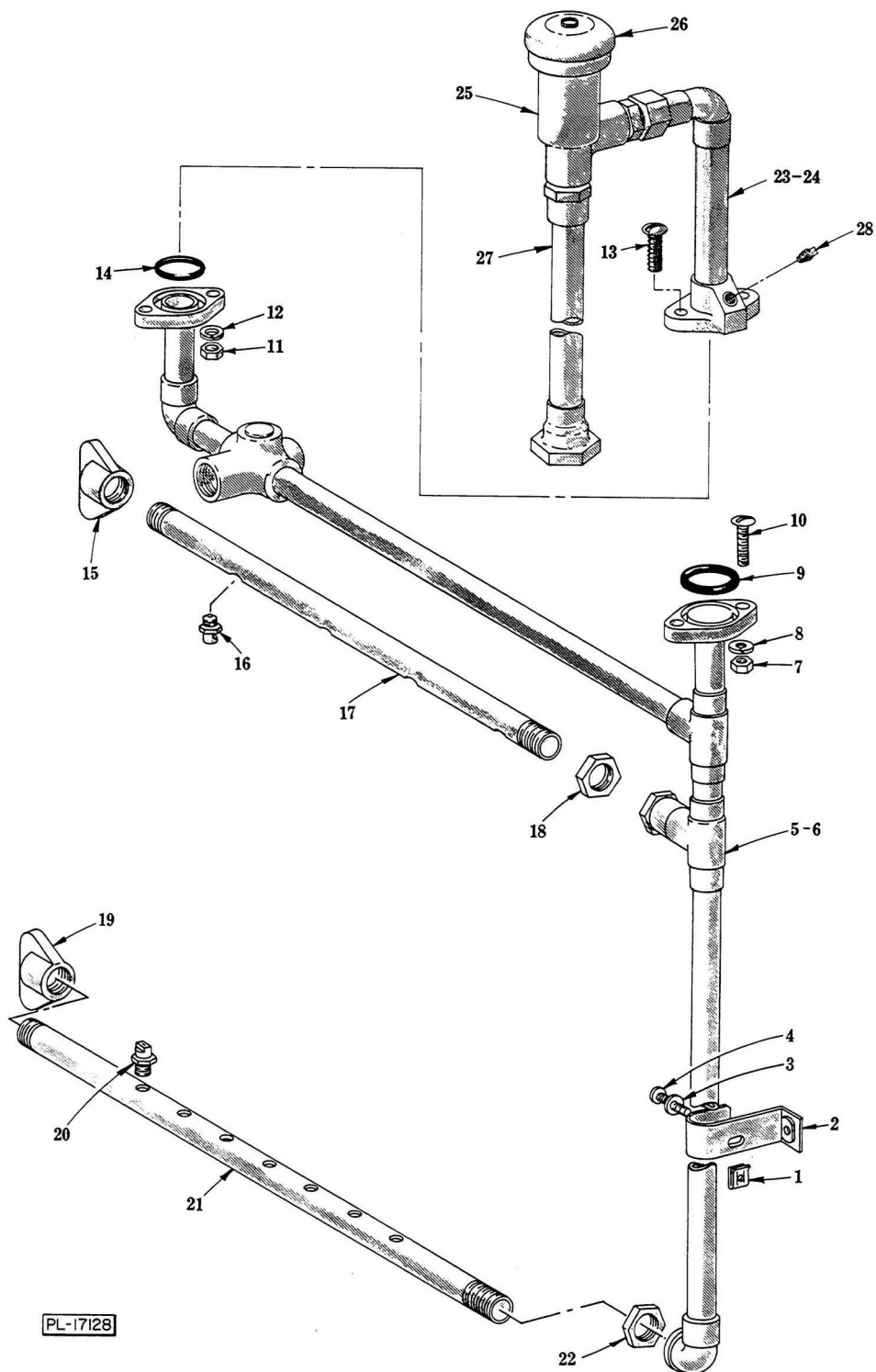
ILLUS.	PART	NAME OF PART	AMT.
PL-16958-1	NO.		
1	NS-15-11	Full Nut - 5/16"-18 Hex Fin	4
2	WL-6-22	Lock Washer - 5/16" Light	4
3	B-120603	Gasket - Seal Retainer	1
4	SC-41-11	Cap Screw - 5/16"-18 x 3/4" Hex Hd	4
5	C-277275	Flow Back Pipe Assy. (Final Rinse to Flow Back Piping)	1
6	NS-15-11	Full Nut - 5/16"-18 Hex Fin	4
7	WL-6-22	Lock Washer - 5/16" Light	4
8	B-120603	Gasket - Seal Retainer	1
9	B-120603	Gasket - Seal Retainer	1
10	B-119680-5	Flow Back Pipe Assy. (Final Rinse Flow Back Pipe to Wash Overflow Tee)	1
11	WS-17-8	Washer	4
12	SC-41-13	Cap Screw - 5/16"-18 x 1" Hex Hd	4
13	D-67500-19	"O" Ring	1
14	D-67500-19	"O" Ring	1
15	SC-41-13	Cap Screw - 5/16"-18 x 1" Hex Hd	4
16	WS-17-8	Washer	4
17	B-120115	Retainer - Seal	1
18	B-120603	Gasket - Seal Retainer	1
19	R-77621-2	Ring - Sealing	1
20	B-120603	Gasket - Seal Retainer	1
21	B-120115	Retainer - Seal	1
22	WS-17-8	Washer	4
23	WL-6-22	Lock Washer - 5/16" Light	4
24	NS-15-11	Full Nut - 5/16"-18 Hex Fin	4
25	C-119680-2	Flow Back Pipe Assy. (Wash Tank to Prewash)	1
26	B-120603	Gasket - Seal Retainer	1
27	NS-15-11	Full Nut - 5/16"-18 Hex Fin	4
28	WL-6-22	Lock Washer - 5/16" Light	4
29	SC-41-11	Cap Screw - 5/16"-18 x 3/4" Hex Hd	4
30	SC-55-28	Set Screw - #10-24 x 3/8" Soc. Hdls., Cone Pt	6
31	R-81033	Tee - Overflow	1
32	R-77621-2	Ring - Sealing	1
33	WS-17-8	Washer	4
	508454	Sealer - 1/8" Rd. (Use with items #12 & 15)	AR



PL-14637

**FLOW BACK PIPING
(FT-700 WASH)**

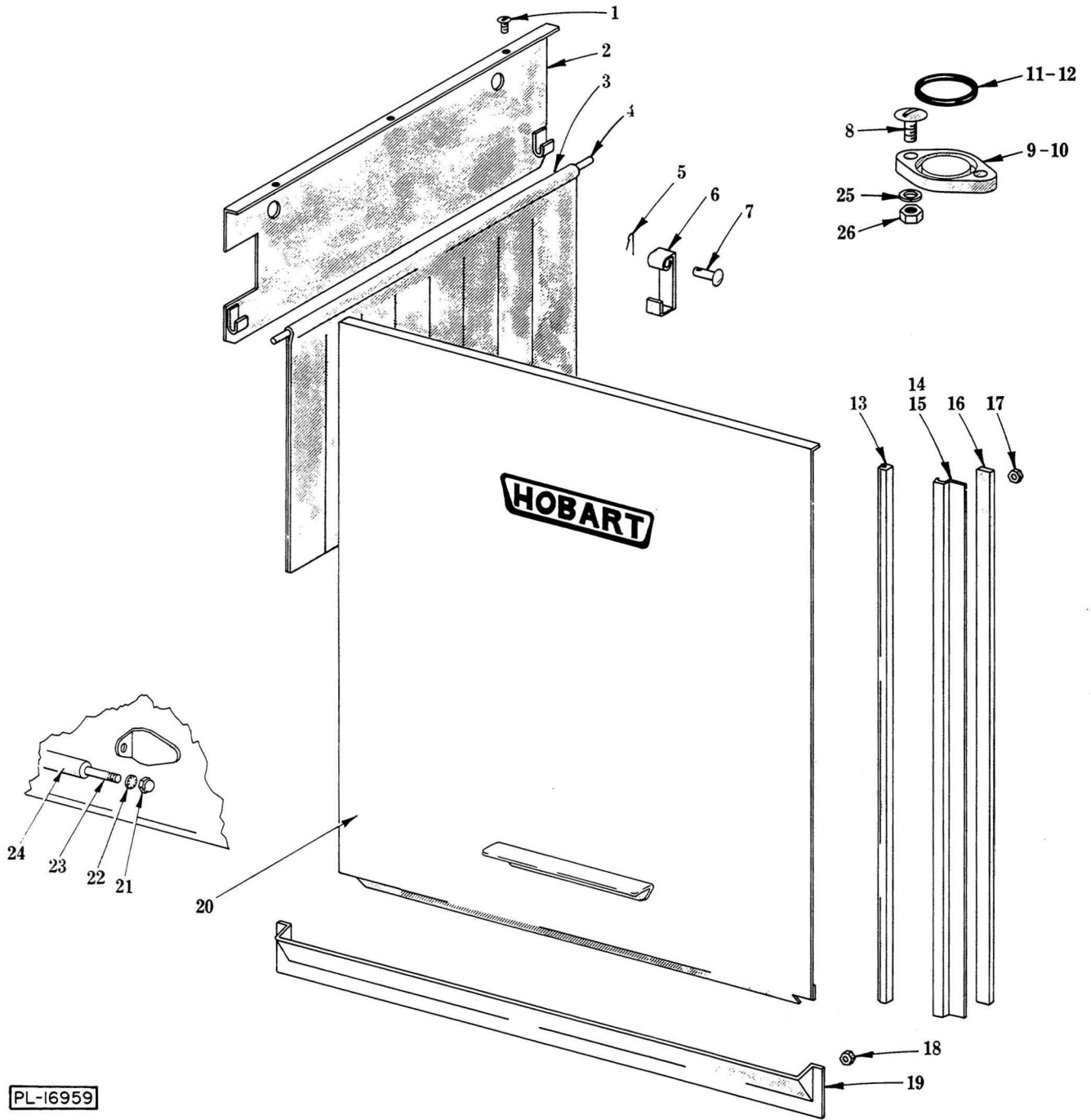
ILLUS.	PART NO.	NAME OF PART	AMT.
PL-14637	1	NS-15-11 Full Nut - 5/16"-18 Hex Fin	4
	2	WL-6-22 Lock Washer - 5/16" Light	4
	3	B-120603 Gasket - Seal Retainer	1
	4	SC-41-11 Cap Screw - 5/16"-18 x 3/4" Hex Hd	4
	5	C-119680-2 Flow Back Pipe Assy. (Rinse Tank to Wash Tank)	1
	6	NS-15-11 Full Nut - 5/16"-18 Hex Fin	4
	7	WL-6-22 Lock Washer - 5/16" Light	4
	8	WS-17-8 Washer	4
	9	B-120115 Retainer - Seal	1
	10	B-120603 Gasket - Seal Retainer	1
	11	R-77621-2 Ring - Sealing	1
	12	B-120603 Gasket - Seal Retainer	1
	13	B-120115 Retainer - Seal	1
	14	WS-17-8 Washer	4
	15	SC-41-13 Cap Screw - 5/16"-18 x 1" Hex Hd	4
	16	D-67500-19 "O" Ring	1
	17	R-81033 Tee - Overflow	1
	18	SC-55-28 Set Screw - #10-24 x 3/8" Soc. Hdls., Cone Pt	6
	19	D-67500-19 "O" Ring	1
	20	C-119680-2 Flow Back Pipe Assy. (Wash Tank to Prewash)	1
	21	SC-41-13 Cap Screw - 5/16"-18 x 1" Hex Hd	4
	22	WS-17-8 Washer	4
	23	B-120115 Retainer - Seal	1
	24	B-120603 Gasket - Seal Retainer	1
	25	R-77621-2 Ring - Sealing	1
	26	B-120603 Gasket - Seal Retainer	1
	27	B-120115 Retainer - Seal	1
	28	WS-17-8 Washer	4
	29	WL-6-22 Lock Washer - 5/16" Light	4
	30	NS-15-11 Full Nut - 5/16"-18 Hex Fin	4
	31	SC-41-11 Cap Screw - 5/16"-18 x 3/4" Hex Hd	4
	32	B-120603 Gasket - Seal Retainer	1
	33	WL-6-22 Lock Washer - 5/16" Light	4
	34	NS-15-11 Full Nut - 5/16"-18 Hex Fin	4
	508454	Sealer - 1/8" Rd. (Use with items #15 & 21)	AR



INSIDE RINSE PIPING

**INSIDE RINSE PIPING
(FT-600)**

ILLUS. PL-17128	PART NO.	NAME OF PART	AMT.
1	M-74348	Speed Nut - #10-24	1
2	B-122367	Rinse Pipe Support Assy	1
3	WS-19-20	Washer	1
4	SC-21-96	Mach. Screw - #10-24 x 1-1/4" Rd. Hd	1
5	E-120279	Inside Rinse Piping Assy. (R. to L.)	1
6	E-120174	Inside Rinse Piping Assy. (L. to R.)	1
7	NS-15-11	Full Nut - 5/16"-18 Hex Fin	2
8	WL-6-22	Lock Washer - 5/16" Light	2
9	D-67500-13	"O" Ring	1
10	SC-53-17	Mach. Screw - 5/16"-18 x 3/4" Truss Hd	2
11	NS-15-11	Full Nut - 5/16"-18 Hex Fin	2
12	WL-6-22	Lock Washer - 5/16" Light	2
13	SC-21-57	Mach. Screw - 5/16"-18 x 1-1/4" Rd. Hd	2
14	D-67500-12	"O" Ring	1
15	P-66246	Cap - Rinse Arm	1
16	M-22731-3	Nozzle - Upper Rinse Arm	7
17	B-156522	Arm - Upper Rinse	1
18	FP-30-27	Lock Nut - 1/2" Pipe	1
19	P-66246	Cap - Rinse Arm	1
20	M-81812	Nozzle - Lower Rinse Arm	7
21	C-120962	Arm - Lower Rinse (7 Jet)	1
22	FP-30-27	Lock Nut - 1/2" Pipe	1
23	D-276675-3	Pipe & Flange Assy. (Vacuum Breaker Outlet) (R. to L.)	1
24	D-276675-4	Pipe & Flange Assy. (Vacuum Breaker Outlet) (L. to R.)	1
25	M-74338	Vacuum Breaker - 3/4" (Incls. item #26)	1
26	A-104729	Cap - Vacuum Breaker	1
27	D-276675-5	Piping Assy. (Vacuum Breaker Inlet)	1
28	A-119127	Plug - Pipe	1
	B-156703	Upper Rinse Arm Assy. (Incls. items #15 thru 18)	1
	C-120963	Lower Rinse Arm Assy. (Incls. items #19 thru 22)	1
	M-74343	Vacuum Breaker Float & Seal Assy	1



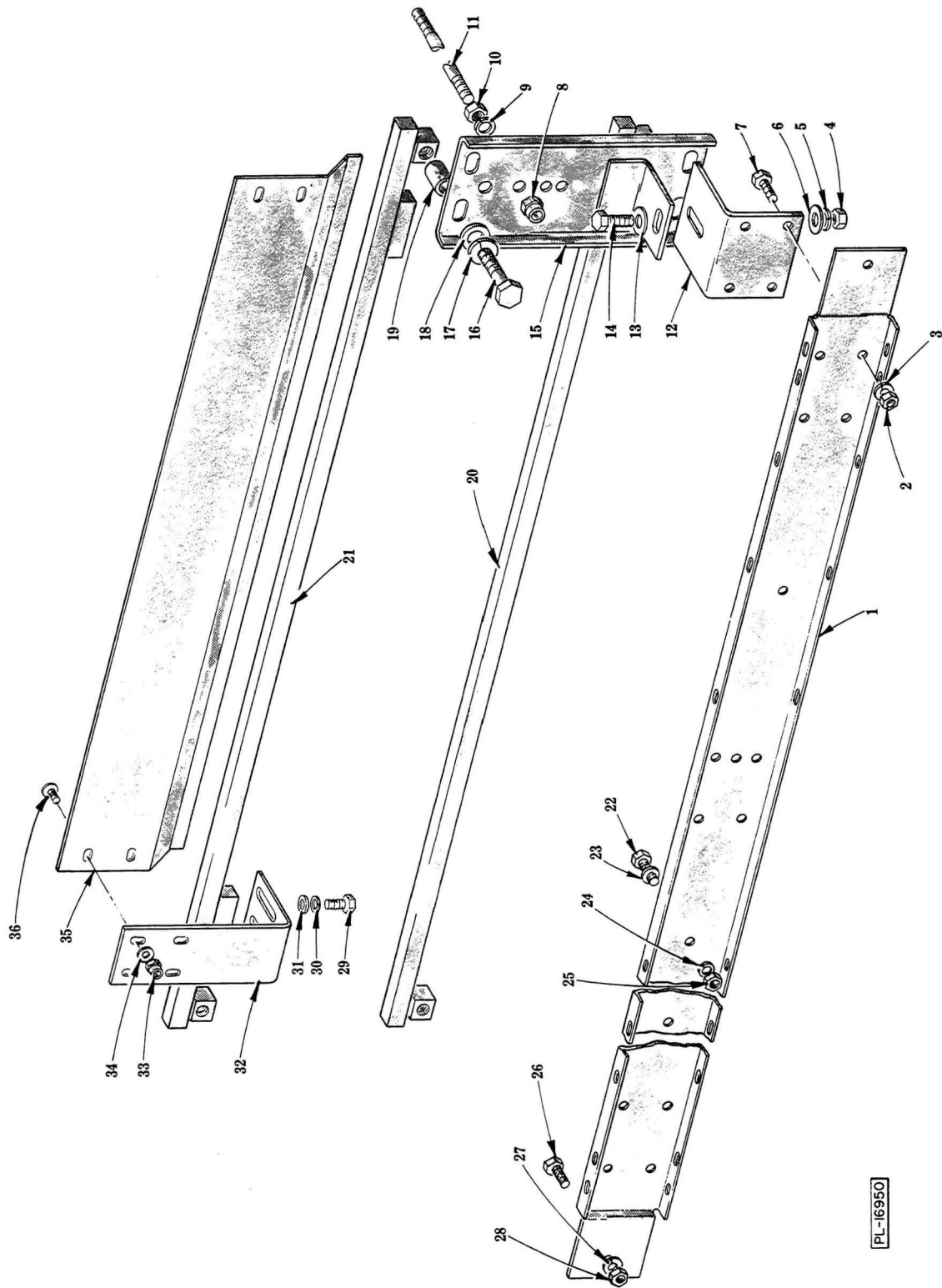
PL-16959

CURTAIN AND DOOR UNIT

CURTAIN AND DOOR UNIT

ILLUS. PL-16959	PART NO.	NAME OF PART	AMT.
1	SC-53-2	Mach. Screw - #10-24 x 1/2" Truss Hd	3
2	E-118815-1	Washer & Rinse Baffle Assy	1
3	E-120201-2	Curtain - Splash (15-E-3)	1
4	B-120266-3	Rod - Splash Curtain	1
5	PC-5-02	Cotter Pin - 1/16" x 1/2"	1
6	C-290164	Latch - Door	1
7	V-12114	Pin	1
8	SC-53-18	Mach. Screw - 5/16"-18 x 7/8" Truss Hd	AR
9	M-64515-2	Flange (2" Hole Spread)	2
*10	P-82429	Flange (2-3/4" Hole Spread)	2
11	D-67500-13	"O" Ring (1-9/16" O.D.)	2
*12	D-67500-20	"O" Ring (2-1/8" O.D.)	2
13	D-112378-11	Slide - Door	2
14	D-112383-1	L.H. Door Guide Assy. (Not Shown)	1
15	D-112384-1	R.H. Door Guide Assy	1
16	526454	Tape - Foam	AR
17	NS-31-16	Stop Nut - #10-24 "Elastic"	22
18	NS-31-16	Stop Nut - #10-24 "Elastic"	13
19	C-156585	Inspection Door Trough Assy	1
20	C-112440	Door & Handle Assy	1
21	NS-25-4	Acorn Nut - 1/4"-20 Hex	2
22	WL-8-17	Lock Washer - 1/4" Int. Shakeproof	2
23	M-63486	Stud - Door Handle	1
24	M-22413-2	Handle - Door	1
25	WL-6-22	Lock Washer - 5/16" Light	AR
26	NS-15-11	Full Nut - 5/16"-18 Hex Fin	AR
	D-120152-27	Curtain Assy. (15-E-3) (Incls. items #3 & 4)	1

*FT-700 Wash Unit.

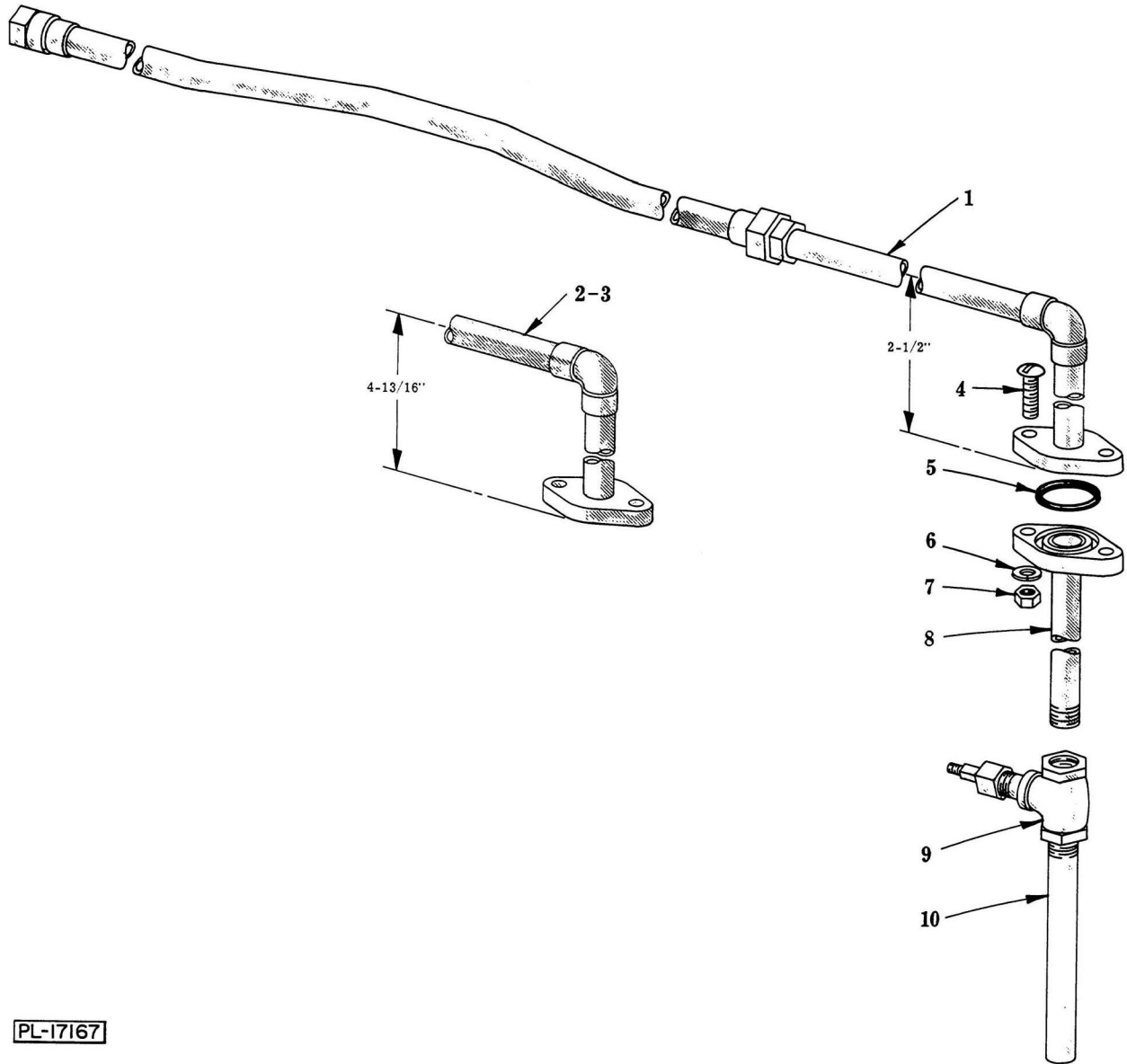


PL-16950

TRACKS AND DISH GUIDES

TRACKS AND DISH GUIDES

ILLUS. PL-16950	PART NO.	NAME OF PART	AMT.
1	E-119507-2	Support - Tank	2
2	NS-15-11	Full Nut - 5/16"-18 Hex Fin	16
3	WL-6-22	Lock Washer - 5/16" Light	16
4	NS-15-13	Full Nut - 3/8"-16 Hex Fin	4
5	WL-6-27	Lock Washer - 3/8" Light	4
6	WS-6-44	Washer	4
7	SC-41-12	Cap Screw - 5/16"-18 x 7/8" Hex Hd	16
8	NS-31-33	Stop Nut - 3/8"-16 "Elastic"	4
9	WL-6-27	Lock Washer - 3/8" Light	4
10	NS-15-13	Full Nut - 3/8"-16 Hex Fin	4
11	A-156661	Rod - Tie	2
12	R-81010	Bracket - Track	4
13	WS-6-44	Washer	4
14	SC-41-30	Cap Screw - 3/8"-16 x 1" Hex Hd	4
15	C-118793	Track Support & Bracket Assy	4
16	SC-41-60	Cap Screw - 1/2"-13 x 2" Hex Hd	8
17	WL-6-35	Lock Washer - 1/2" Light	8
18	WS-8-49	Washer	8
19	M-83204	Spacer - Track	8
20	C-121017-2	Lower Track Assy	2
21	D-118768-2	Upper Track Assy	2
22	SC-41-11	Cap Screw - 5/16"-18 x 3/4" Hex Hd	7
23	WS-17-8	Washer	7
24	WL-6-22	Lock Washer - 5/16" Light	7
25	NS-15-11	Full Nut - 5/16"-18 Hex Fin	7
26	SC-41-12	Cap Screw - 5/16"-18 x 7/8" Hex Hd	4
27	WL-6-22	Lock Washer - 5/16" Light	4
28	NS-15-11	Full Nut - 5/16"-18 Hex Fin	4
29	SC-41-10	Cap Screw - 5/16"-18 x 5/8" Hex Hd	8
30	WL-6-22	Lock Washer - 5/16" Light	8
31	WS-17-8	Washer	8
32	R-81059	Bracket - Dish Guide	4
33	NS-31-15	Stop Nut - #10-24 "Elastic"	8
34	WS-19-6	Washer	8
35	D-119514-1	Dish Guide	2
36	SC-53-2	Mach. Screw - #10-24 x 1/2" Truss Hd	8

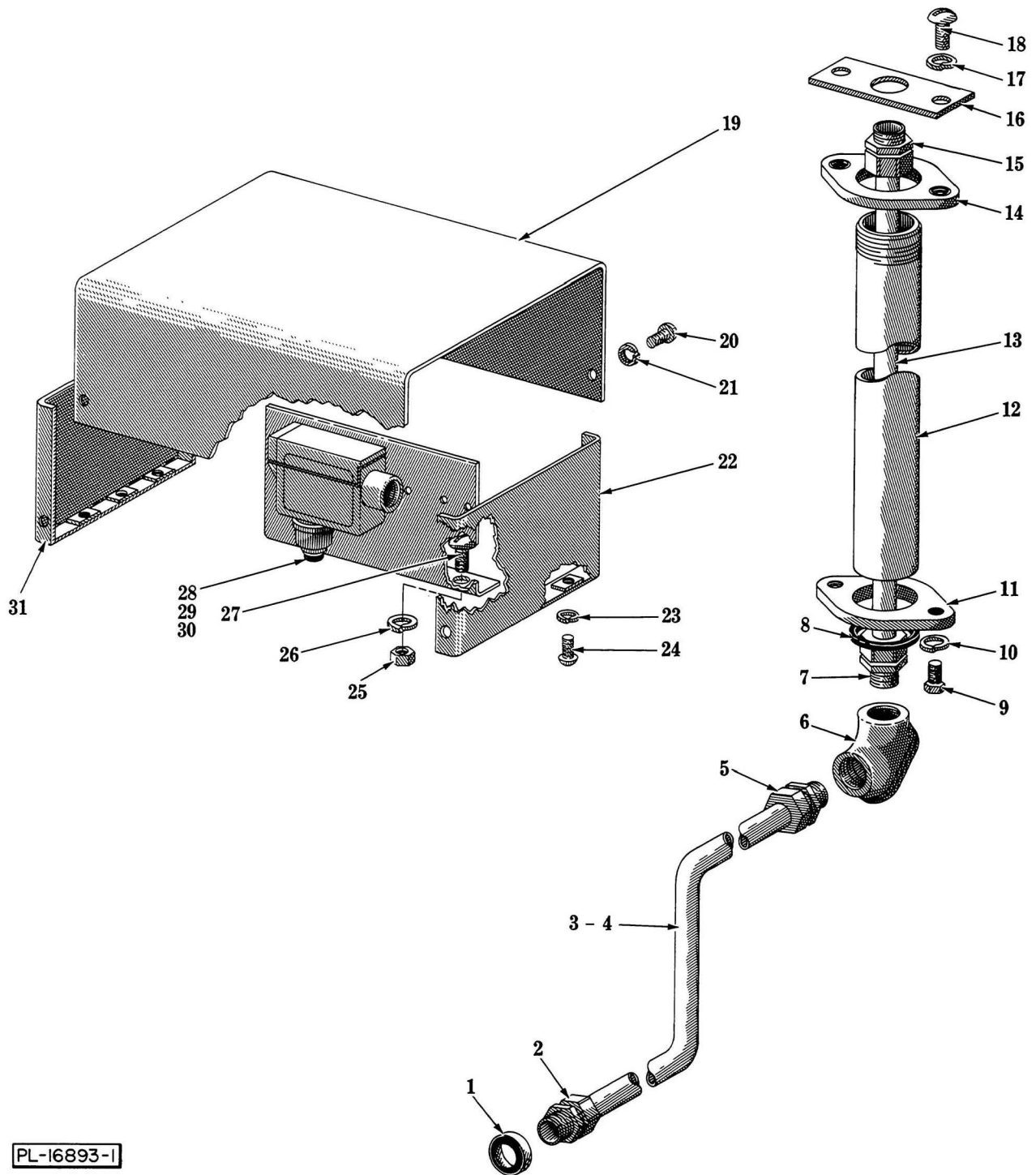


PL-17167

FEED BACK PIPING

**FEED BACK PIPING
(FT-700)**

ILLUS. PL-17167	PART NO.	NAME OF PART	AMT.
1	E-119637	Feed Back Piping Assy. (Fill Piping Outside Chamber)	1
2	E-276723	Feed Back Piping Assy. (Fill Piping Inside Chamber) (R. to L.)	1
3	E-276724	Feed Back Piping Assy. (Fill Piping Inside Chamber) (L. to R.)	1
4	SC-21-57	Mach. Screw - 5/16"-18 x 1-1/4" Rd. Hd	2
5	D-67500-12	"O" Ring	2
6	WL-6-22	Lock Washer - 5/16" Light	2
7	NS-15-11	Full Nut - 5/16"-18 Hex Fin	2
8	M-80253	Flange & Pipe Assy	1
9	M-70955	Valve - 3/8" Globe	1
10	A-106266	Nipple - 3/8" x 6" Lg. (S.T.O.E.)	1



PL-16893-1

RINSE ACTUATOR ELECTRICAL UNIT

**RINSE ACTUATOR ELECTRICAL UNIT
(FT-600)**

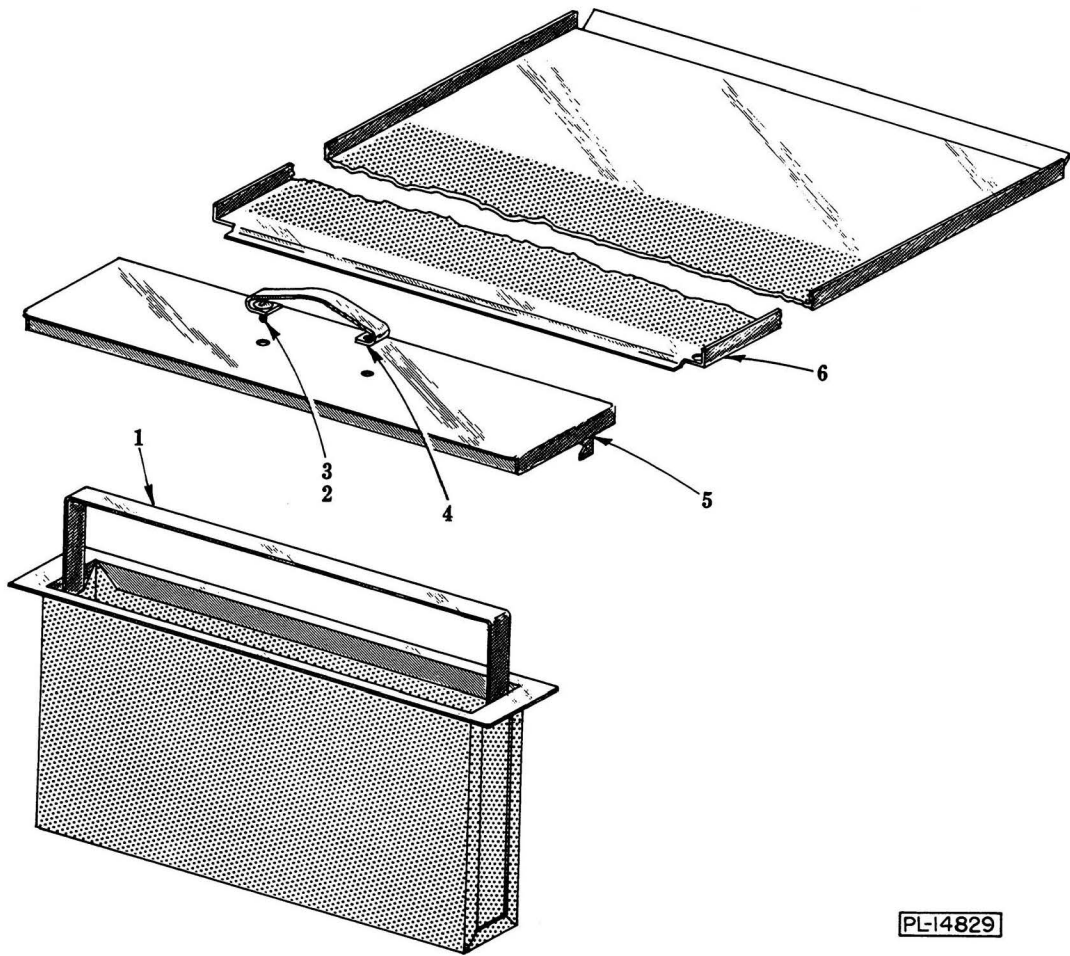
ILLUS. PL-16893-1	PART NO.	NAME OF PART	AMT.
1	FE-8-10	1/2" Gasket Assy	1
2	FE-6-45	Connector - Straight (1/2" Male Thd. x 1/2" Thinwall)	1
**3	D-276651	Conduit - Final Rinse Actuator	1
*4	C-89740-73	Conduit - Angle 90°	1
5	FE-6-45	Connector - Straight (1/2" Male Thd. x 1/2" Thinwall)	1
6	FE-7-31	Ell - 90° x 1/2" Pulling	1
7	FE-6-45	Connector - Straight (1/2" Male Thd. x 1/2" Thinwall)	1
8	D-67500-18	"O" Ring	1
9	SC-41-10	Cap Screw - 5/16"-18 x 5/8" Hex Hd	2
10	WL-6-22	Lock Washer - 5/16" Light	2
11	B-123364	Flange - Lower	1
12	C-123365-1	Tube - Protective	1
13	P-67572-70	Conduit - 1/2" x 41" Thinwall	1
14	B-123363	Flange - Upper	1
15	FE-6-43	Coupling (1/2" Thinwall x 1/2" Thinwall)	1
16	B-276650	Bracket - Conduit Support	1
17	WL-6-22	Lock Washer - 5/16" Light	2
18	SC-53-17	Mach. Screw - 5/16"-18 x 3/4" Truss Hd	2
19	D-276653	Cover - Actuator Switch	1
20	SC-53-5	Mach. Screw - #10-24 x 3/8" Truss Hd	4
21	WL-13-11	Lock Washer - #10 Int. Shakeproof	4
22	D-276654-1	Door - Actuator Cover (Back)	1
23	WL-13-11	Lock Washer - #10 Int. Shakeproof	4
24	SC-53-5	Mach. Screw - #10-24 x 3/8" Truss Hd	4
25	NS-15-11	Full Nut - 5/16"-18 Hex Fin	2
26	WL-6-22	Lock Washer - 5/16" Light	2
27	SC-21-52	Mach. Screw - 5/16"-18 x 5/8" Rd. Hd	2
28	NS-31-50	Stop Nut - #6-32 "Elastic"	2
29	M-85573	Switch - Interlock	1
30	C-277028	Bracket - Switch	1
31	D-276654-2	Door - Actuator Cover (Front)	1

*L-R Operation.

**R-L Operation.

**RINSE ACTUATOR
(FT-600)**

ILLUS. PL-16940	PART NO.	NAME OF PART	AMT.
1	PC-5-2	Cotter Pin - 1/16" x 1/2"	2
2	WS-17-8	Washer	AR
3	M-85138	Magnet Assy	1
4	SC-53-23	Mach. Screw - 5/16"-18 x 1-3/4" Truss Hd	1
5	NS-15-11	Full Nut - 5/16"-18 Hex Fin	3
6	C-277563	Rinse Actuator Support Assy	1
7	NS-15-11	Full Nut - 5/16"-18 Hex Fin	4
8	WL-6-22	Lock Washer - 5/16" Light	4
9	SC-41-11	Mach. Screw - 5/16"-18 x 3/4" Truss Hd	4
10	C-277898	Stop - Final Rinse Actuator	1
11	WL-6-22	Lock Washer - 5/16" Light	1
12	SC-41-9	Cap Screw - 5/16"-18 x 1/2" Hex Hd	1
13	SC-41-59	Cap Screw - 1/2"-13 x 1-3/4" Hex Hd	1
14	NS-18-23	Jam Nut - 1/2"-13 Hex Fin	1
15	WS-8-43	Washer	AR
16	C-276595	Counterweight (Type A Conveyor)	1
17	C-122798	Counterweight (Type B Conveyor) (Not Shown)	1
18	SC-41-59	Cap Screw - 1/2"-13 x 1-3/4" Hex Hd	1
19	NS-18-23	Jam Nut - 1/2"-13 Hex Fin	1
20	M-77583	Button - Switch Rod Wear	1
21	PG-7-32	Groov-Pin - Type A, 5/64" x 1/2"	2
22	WS-6-44	Washer	1
23	M-22509	Spring - Interlock	1
24	M-78609	Switch Rod Bearing Assy	1
25	M-83142	Switch Rod & Wear Button Assy. (Incls. items #20 & 21)	1
26	RR-6-21	Retaining Ring	1
27	WS-11-22	Washer	AR
28	V-14049	Lock Nut	1
29	R-82248	Support - Final Rinse	1
30	M-67508	Stop Plate & Screw Assy	1
31	NS-15-11	Full Nut - 5/16"-18 Hex Fin	1
32	D-118536	Actuator Assy. (Type A Conveyor)	1
33	D-122800	Actuator Assy. (Type B Conveyor) (Not Shown)	1
	P-83143	Plunger Assy. (Incls. items #22 thru 28)	1

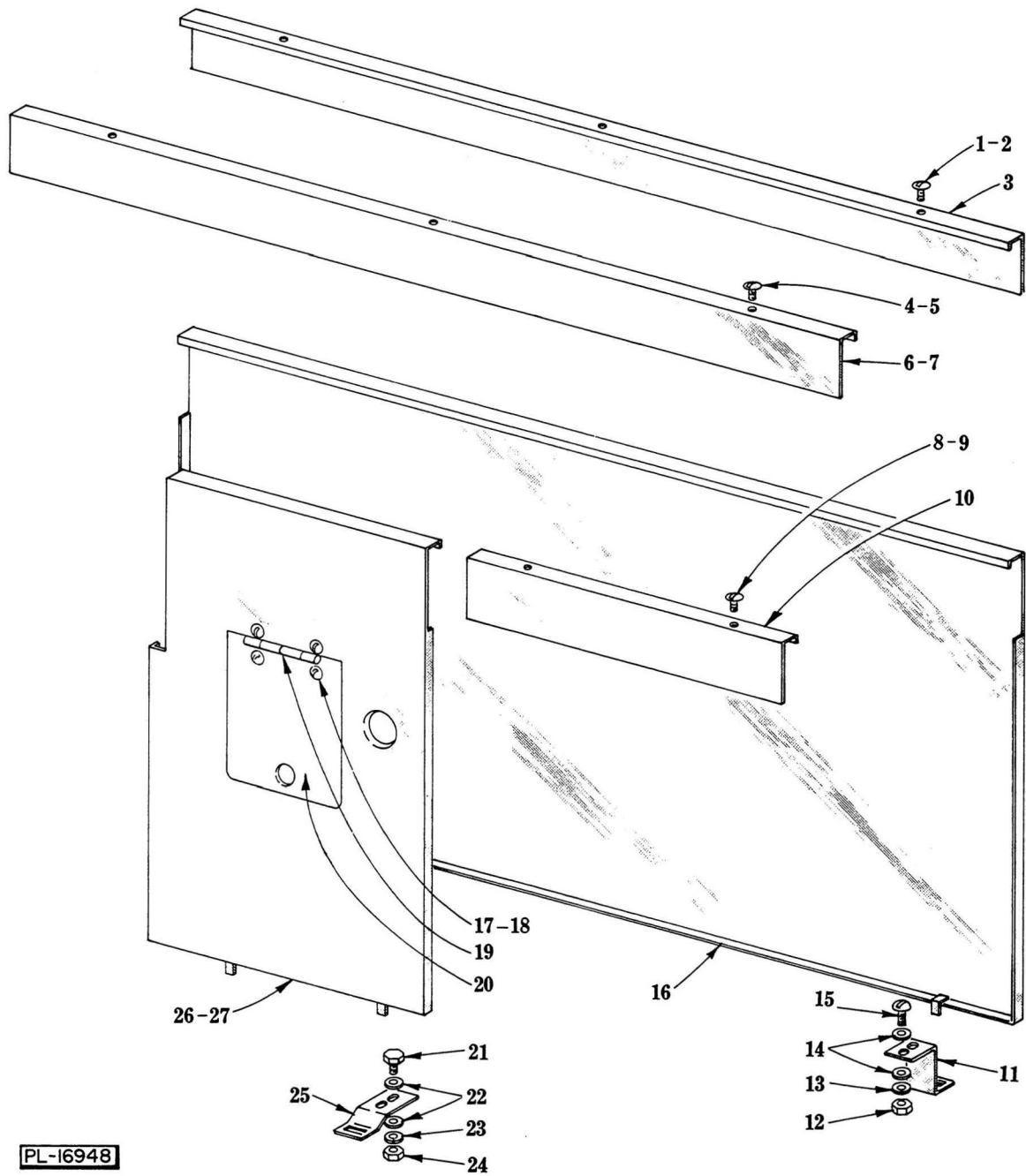


PL-14829

STRAINERS

STRAINERS

ILLUS. PL-14829	PART NO.	NAME OF PART	AMT.
1	C-156465	Strainer Basket Assy	1
2	SC-21-22	Mach. Screw - #10-24 x 3/8" Rd. Hd	2
3	NS-31-15	Stop Nut - #10-24 "Elastic"	2
4	P-111303-2	Handle	1
5	C-123373	Chute Cover Assy. (Incls. items #2, 3 & 4)	1
6	E-121713	Pan - Strainer	1



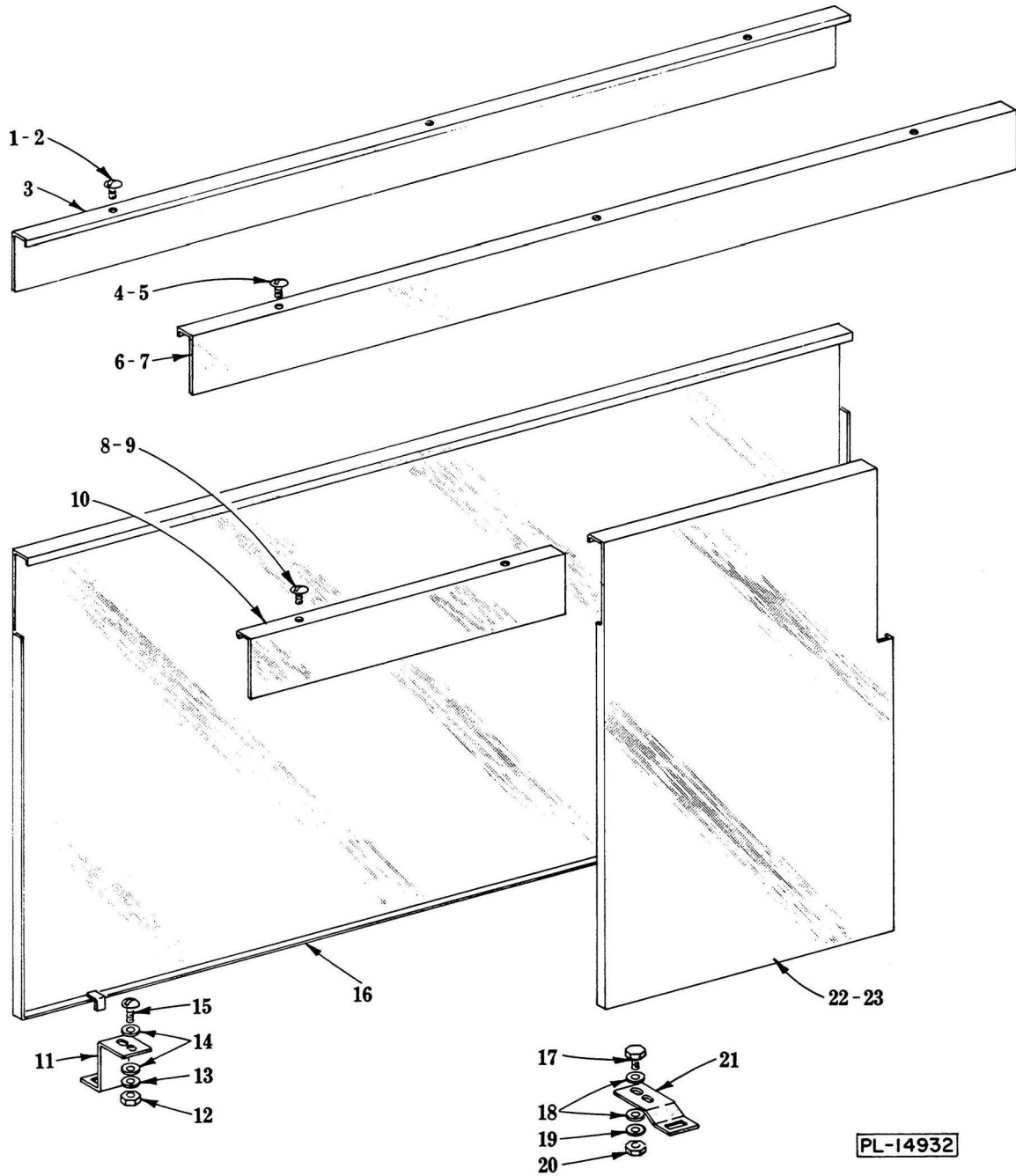
PL-16948

PANELS

PANELS
(R. TO L. OPERATION)

ILLUS. PL-16948	PART NO.	NAME OF PART	AMT.
1	SC-53-4	Mach. Screw - #10-24 x 5/16" Truss Hd	3
2	M-75895	Speed Nut - #10-24	3
3	D-276004-1	Panel - Trim (Rear)	1
4	SC-53-4	Mach. Screw - #10-24 x 5/16" Truss Hd	3
5	M-75895	Speed Nut - #10-24	3
6	D-276004-1	Panel - Trim (Front)	1
*7	D-276004-3	Panel - Trim (Front) (Use With Circuit Breakers)	1
8	SC-53-4	Mach. Screw - #10-24 x 5/16" Truss Hd	2
9	M-75895	Speed Nut - #10-24	2
10	D-123069	Panel - Trim (Front)	1
11	C-123100	Bracket - Panel Support (Rear)	2
12	NS-11-18	Mach. Nut - #10-24 Hex	4
13	WL-6-16	Lock Washer - 1/4" Light	4
14	WS-19-6	Washer	8
15	SC-21-25	Mach. Screw - #10-24 x 3/4" Rd. Hd	4
16	E-123160-13	Panel - Rear	1
*17	SC-53-5	Mach. Screw - #10-24 x 3/8" Truss Hd	4
*18	NS-31-15	Stop Nut - #10-24 "Elastic"	4
*19	M-67177	Hinge	1
*20	C-277728	Door - Valve Access	1
*21	M-81921	Mach. Screw - #10-24 x 1/2" Trim. Hex Hd	4
*22	WS-19-6	Washer	8
*23	WL-6-16	Lock Washer - 1/4" Light	4
*24	NS-11-18	Mach. Nut - #10-24 Hex	4
*25	C-122835-1	Bracket - Panel Support (Front)	2
*26	E-123159-14	Panel - Front	1
*27	E-276014-1	Panel Assy. (Use With Circuit Breakers) (Not Shown)	1
	*E-123161-11	Panel Assy. (Incls. items #17, 18, 19, 20 & 26)	1
	*E-123161-14	Panel Assy. (Use with Circuit Breakers) (Incls. items #17, 18, 19, 20 & 27)	1

*FT-600.

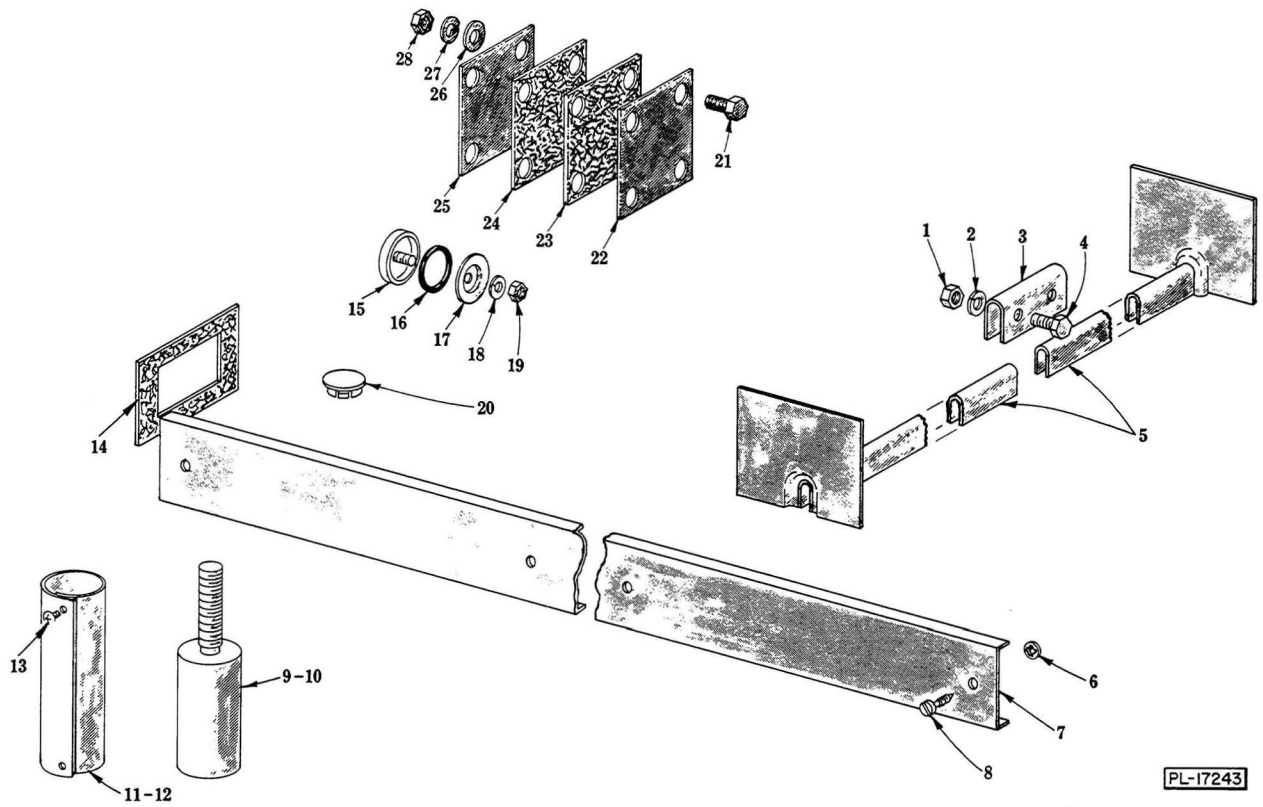


PANELS

PANELS
(L. TO R. OPERATION)

ILLUS. PL-14932	PART NO.	NAME OF PART	AMT.
1	SC-53-4	Mach. Screw - #10-24 x 5/16" Truss Hd	3
2	M-75895	Speed Nut - #10-24	3
3	D-276004-1	Panel - Trim (Rear)	1
4	SC-53-4	Mach. Screw - #10-24 x 5/16" Truss Hd	3
5	M-75895	Speed Nut - #10-24	3
6	D-276004-1	Panel - Trim (Front)	1
*7	D-276004-2	Panel - Trim (Front) (Use With Circuit Breakers)	1
8	SC-53-4	Mach. Screw - #10-24 x 5/16" Truss Hd	2
9	M-75895	Speed Nut - #10-24	2
10	D-123069	Panel - Trim (Front)	1
11	C-123100	Bracket - Panel Support (Rear)	2
12	NS-11-18	Mach. Nut - #10-24 Hex	4
13	WL-6-16	Lock Washer - 1/4" Light	4
14	WS-19-6	Washer	8
15	SC-21-25	Mach. Screw - #10-24 x 3/4" Rd. Hd	4
16	E-123160-13	Panel - Rear	1
*17	M-81921	Mach. Screw - #10-24 x 1/2" Trim. Hex Hd	4
*18	WS-19-6	Washer	8
*19	WL-6-16	Lock Washer - 1/4" Light	4
*20	NS-11-18	Mach. Nut - #10-24 Hex	4
*21	C-122835-1	Bracket - Panel Support (Front)	2
*22	E-123160-17	Panel - Front	1
*23	E-276014-2	Panel Assy. (Use With Circuit Breakers) (Not Shown)	1

*FT-600.

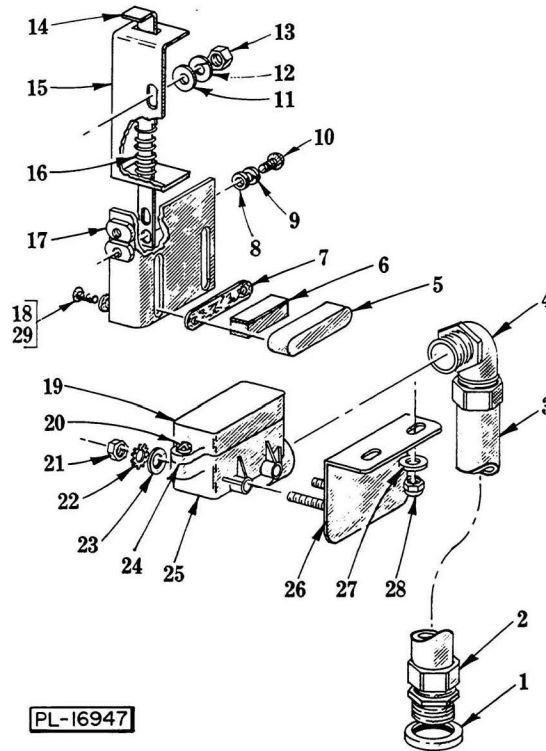


MISCELLANEOUS

MISCELLANEOUS

ILLUS. PL-17243	PART NO.	NAME OF PART	AMT.
1	NS-15-1	Full Nut - 1/4"-20 Hex Fin	4
2	WL-6-16	Lock Washer - 1/4" Light	4
3	P-81174	Connector - Saddle	2
4	SC-41-2	Cap Screw - 1/4"-20 x 1" Hex Hd	4
5	C-277577	Saddle Assy	4
6	B-112016	Retainer - Captive Screw	4
7	D-118660	Cover - Channel	1
8	B-112129	Screw - Captive	4
9	C-108821-1	Foot - Adjustable (STL)	4
10	C-108821-2	Foot - Adjustable (SST)	4
11	C-120702	Trim - Leg (4-27/32" Lg.) (Front)	2
12	R-81848	Trim - Leg (5-3/32" Lg.) (Rear)	2
13	SD-7-15	Self-Tapping Screw - #6 x 3/16" Phil. Bind. Hd., Type B	4
14	C-118759	Gasket - Channel	2
15	B-119244	Cap & Stud Assy	1
16	D-67500-31	"O" Ring	1
17	B-119254	Retainer - Cap	1
18	WL-6-17	Lock Washer - 1/4" Medium	1
19	NS-15-1	Full Nut - 1/4"-20 Hex Fin	1
20	FE-21-12	Plug - 1/2" Conduit	AR
**21	SC-41-13	Cap Screw - 5/16"-18 x 1" Hex Hd	4
**22	M-79812	Plate - Cover	1
**23	M-79813	Gasket	1
**24	M-79813	Gasket	1
**25	M-79812	Plate - Cover	1
**26	WL-17-8	Washer	4
**27	WL-6-22	Lock Washer - 5/16" Light	4
**28	NS-15-11	Full Nut - 5/16"-18 Hex Fin	4
	*SC-41-10	Cap Screw - 5/16"-18 x 5/8" Hex Hd	4
	*WL-6-22	Lock Washer - 5/16" Light	4
	*NS-15-11	Full Nut - 5/16"-18 Hex Fin	4

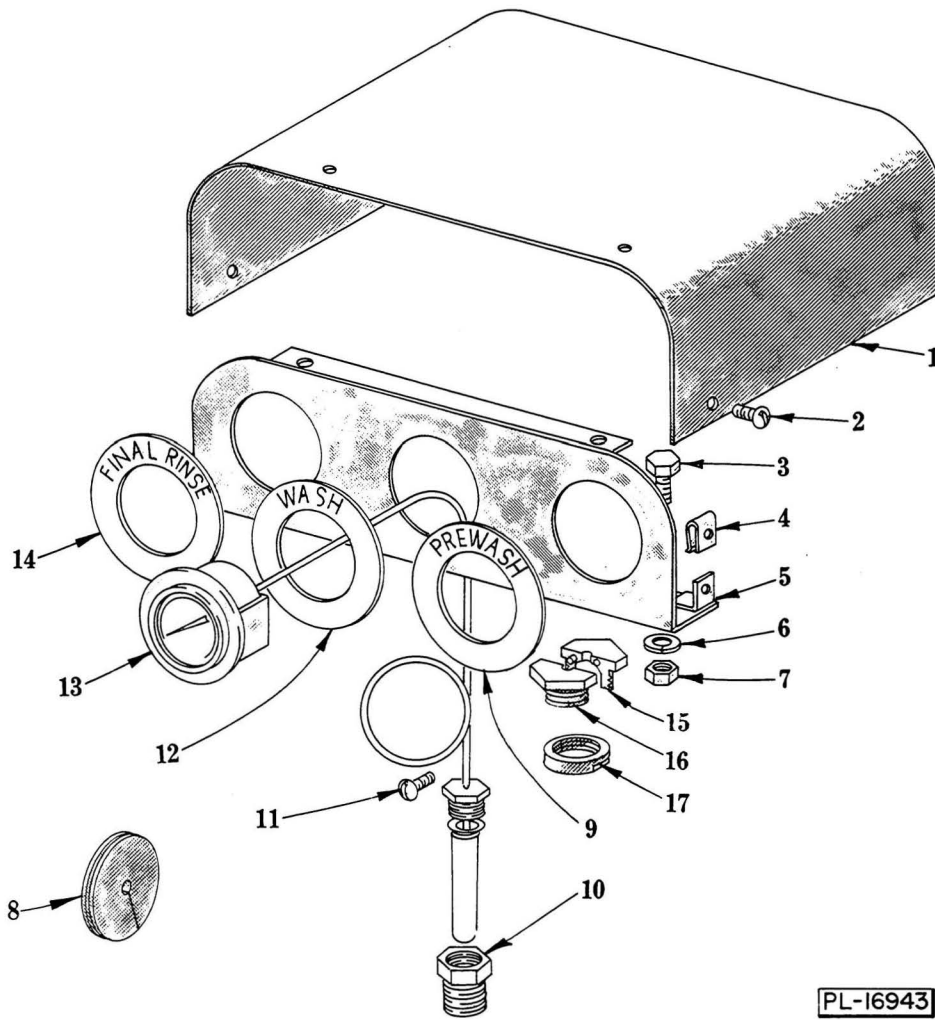
*Not Shown. Retains Saddle Assy. To Wash Chamber.
 **FT-600.



PL-16947

DOOR INTERLOCK

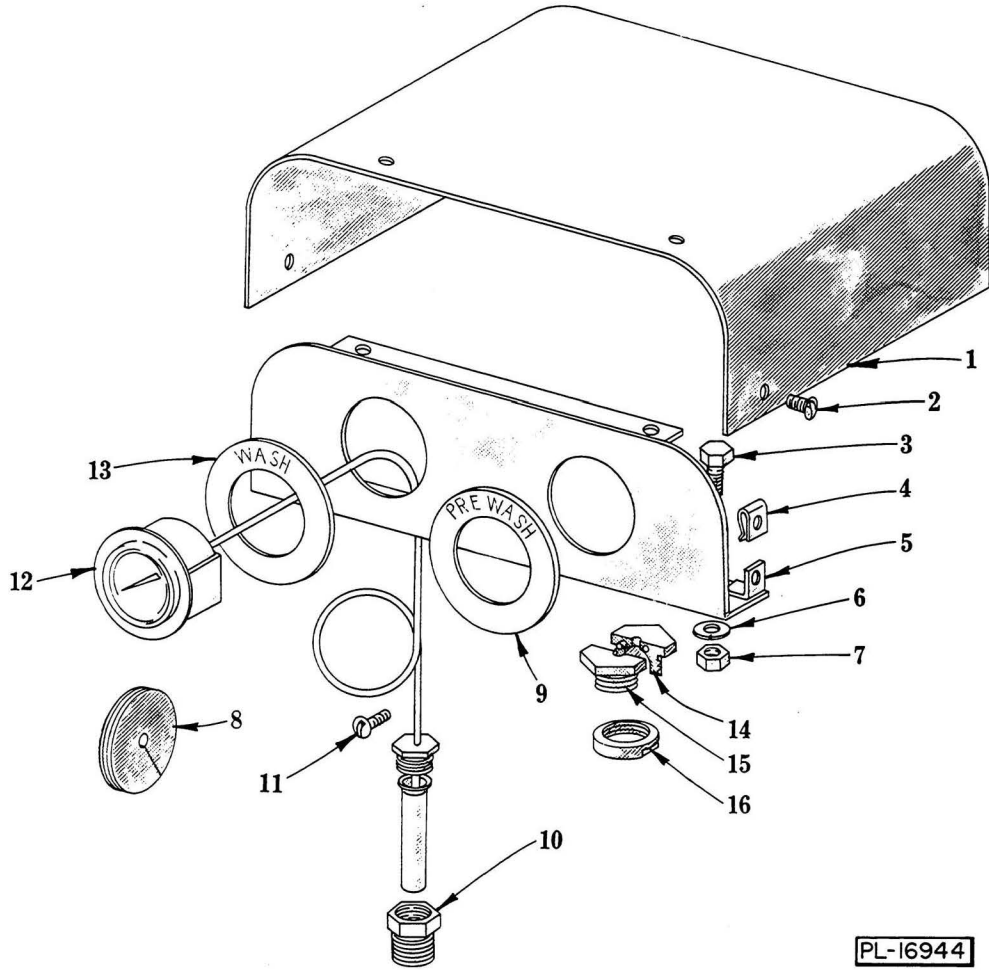
ILLUS. PL-16947	PART NO.	NAME OF PART	AMT.
1	FE-8-10	1/2" Gasket Assy	1
2	FE-7-1	Connector - Straight "Sealtite" (1/2" Male Thd. x 3/8" Flex. Cnd.)	1
3	P-68190-30	Conduit - 3/8" x 13" (Waterproof)	1
4	FE-7-3	Connector - 90° "Sealtite" (1/2" Male Thd. x 3/8" Flex. Cnd.)	1
5	B-119075	Retainer - Magnet	1
6	C-119057	Magnet & Pole Plate	1
7	B-119300	Gasket - Magnet Retainer	1
8	WS-19-16	Washer	2
9	WL-6-1	Lock Washer - #8 Light	2
10	SC-21-14	Mach. Screw - #8-32 x 3/8" Rd. Hd	2
11	WS-3-48	Washer	2
12	WL-6-16	Lock Washer - 1/4" Light	2
13	NS-15-1	Full Nut - 1/4"-20 Hex Fin	2
14	C-122700	Plunger	1
15	C-122701	Bracket - Spring Support	1
16	B-122708	Spring	1
17	C-277142-1	Magnet Holder Assy	1
18	SD-12-35	Self-Tapping Screw - #8-32 x 1/2" Phil. Pan Hd., Type 23	2
19	B-114922	Interlock Switch & Cover Assy	1
20	SD-25-12	Self-Tapping Screw - #8-18 x 1/2" Phil. Pan Hd. "Shakeproof"	2
21	NS-9-22	Mach. Nut - #10-24 Hex	2
22	WL-7-12	Lock Washer - #10 Ext. Shakeproof	2
23	WS-19-16	Washer	2
24	B-106803	Gasket - Interlock Switch	1
25	D-124486	Housing - Interlock Switch	1
26	C-114934-1	Switch Mounting Bracket Assy	1
27	WS-19-6	Washer	2
28	NS-31-15	Stop Nut - #10-24 "Elastic"	2
29	WS-28-21	Washer	2
	B-122721	Safety Switch & Bracket Assy. (Incls. items #19 thru 26)	1



**THERMOMETERS
(FT-600)**

ILLUS. PL-16943	PART NO.	NAME OF PART	AMT.
1	S-85684	Housing - Thermometer	1
2	SC-53-2	Mach. Screw - #10-24 x 1/2" Truss Hd	4
3	SC-41-10	Cap Screw - 5/16"-18 x 5/8" Hex Hd	2
4	M-74348	Speed Nut - #10-24	4
5	R-85683	Thermometer Panel Assy	1
6	WL-6-22	Lock Washer - 5/16" Light	2
7	NS-15-11	Full Nut - 5/16"-18 Hex Fin	2
8	M-65028	Grommet	2
9	C-286683	Ring - Prewash Identification	1
10	A-107218	Coupling - Thermometer	3
11	SC-53-3	Mach. Screw - #10-24 x 3/4" Truss Hd. (Use to Fasten Capillary Tube)	2
12	C-286682	Ring - Wash Identification	1
13	D-276923-6	Thermometer (8 Ft.) (Less Nut)	3
14	C-286687	Ring - Final Rinse Identification	1
15	C-119137	Retainer - Cap. Tube (R.H.)	3
16	C-119139	Retainer - Cap. Tube (L.H.)	3
17	A-103746	Nut (Capillary Retainer)	3

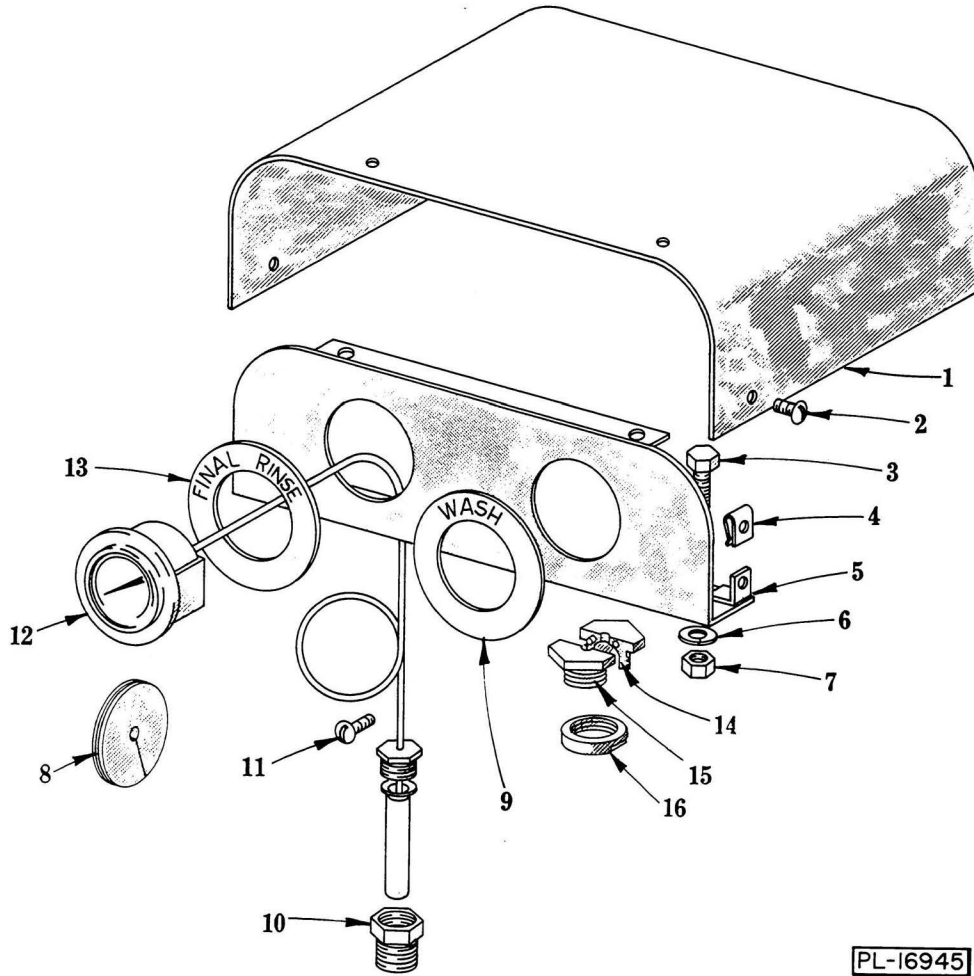
Right to Left Operation Shown. For Left to Right Operation, Reverse Thermometer Identification Rings.



**THERMOMETERS
(FT-700)**

ILLUS. PL-16944	PART NO.	NAME OF PART	AMT.
1	S-85684	Housing - Thermometer	1
2	SC-53-2	Mach. Screw - #10-24 x 1/2" Truss Hd	4
3	SC-41-10	Cap Screw - 5/16"-18 x 5/8" Hex Hd	2
4	M-74348	Speed Nut - #10-24	4
5	R-85682	Thermometer Panel Assy	1
6	WL-6-22	Lock Washer - 5/16" Light	2
7	NS-15-11	Full Nut - 5/16"-18 Hex Fin	2
8	M-65028	Grommet	1
9	C-286683	Ring - Prewash Identification	1
10	A-107218	Coupling - Thermometer	2
11	SC-53-3	Mach. Screw - #10-24 x 3/4" Truss Hd. (Use to Fasten Capillary Tube)	2
12	D-276923-6	Thermometer (8 Ft.) (Less Nut)	2
13	C-286684	Ring - Wash Identification	1
14	C-119137	Retainer - Cap. Tube (R.H.)	2
15	C-119139	Retainer - Cap. Tube (L.H.)	2
16	A-103746	Nut (Capillary Retainer)	2

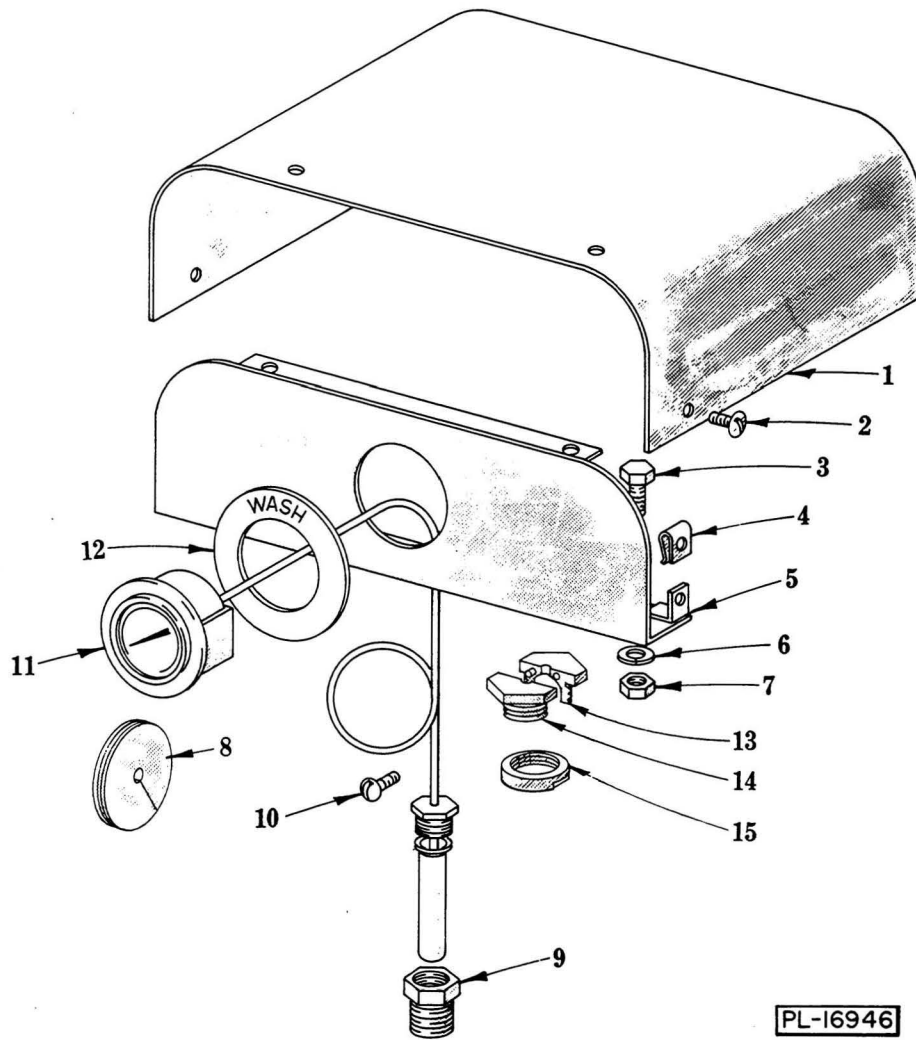
Right to Left Operation Shown. For Left to Right Operation, Reverse Thermometer Identification Rings.



**THERMOMETERS
(FT-600)**

ILLUS. PL-16945	PART NO.	NAME OF PART	AMT.
1	S-85684	Housing - Thermometer	1
2	SC-53-2	Mach. Screw - #10-24 x 1/2" Truss Hd	4
3	SC-41-10	Cap Screw - 5/16"-18 x 5/8" Hex Hd	2
4	M-74348	Speed Nut - #10-24	4
5	R-85682	Thermometer Panel Assy	1
6	WL-6-22	Lock Washer - 5/16" Light	2
7	NS-15-11	Full Nut - 5/16"-18 Hex Fin	2
8	M-65028	Grommet	1
9	C-286682	Ring - Wash Identification	1
10	A-107218	Coupling - Thermometer	2
11	SC-53-3	Mach. Screw - #10-24 x 3/4" Truss Hd. (Use to Fasten Capillary Tube)	2
12	D-276923-6	Thermometer (8 Ft.) (Less Nut)	2
13	C-286687	Ring - Final Rinse Identification	1
14	C-119137	Retainer - Cap. Tube (R.H.)	2
15	C-119139	Retainer - Cap. Tube (L.H.)	2
16	A-103746	Nut (Capillary Retainer)	2

Right to Left Operation Shown. For Left to Right Operation, Reverse Thermometer Identification Rings.



**THERMOMETERS
(FT-700)**

ILLUS. PL-16946	PART NO.	NAME OF PART	AMT.
1	S-85684	Housing - Thermometer	1
2	SC-53-2	Mach. Screw - #10-24 x 1/2" Truss Hd	4
3	SC-41-10	Cap Screw - 5/16"-18 x 5/8" Hex Hd	2
4	M-74348	Speed Nut - #10-24	4
5	C-156596	Thermometer Panel Assy	1
6	WL-6-22	Lock Washer - 5/16" Light	2
7	NS-15-11	Full Nut - 5/16"-18 Hex Fin	2
8	M-65028	Grommet	1
9	A-107218	Coupling - Thermometer	1
10	SC-53-3	Mach. Screw - #10-24 x 3/4" Truss Hd. (Use to Fasten Capillary Tube)	1
11	D-276923-6	Thermometer (8 Ft.) (Less Nut)	1
12	C-286684	Ring - Wash Identification	2
13	C-119137	Retainer - Cap. Tube (R.H.)	1
14	C-119139	Retainer - Cap. Tube (L.H.)	1
15	A-103746	Nut (Capillary Retainer)	1