



CATALOG OF REPLACEMENT PARTS

FT/FTM800W DISHWASHER (SUPPLEMENT)

LOADING	CENTER	UN-LOADING
ML-33272	ML-110001	ML-33276
ML-33273	ML-110002	ML-33277
ML-33274	ML-110003	ML-33278
ML-33275	ML-110004	ML-33279
ML-33780	ML-110037	ML-33280
ML-33781	ML-110038	ML-33281
ML-33782	ML-110279	ML-33282
ML-33783	ML-110280	ML-33283
ML-110261	ML-110039	ML-33284
ML-110262	ML-110040	ML-33285
ML-110263	ML-110281	ML-33286
ML-110264	ML-110282	ML-33287
ML-110265		ML-33827
ML-110266		ML-33828
ML-110267		ML-33829
ML-110268		ML-33830

Supplement to FT & FTM800 Series
Dishwashers Replacement Parts Catalog
Form 15968 Rev. B (5-91).

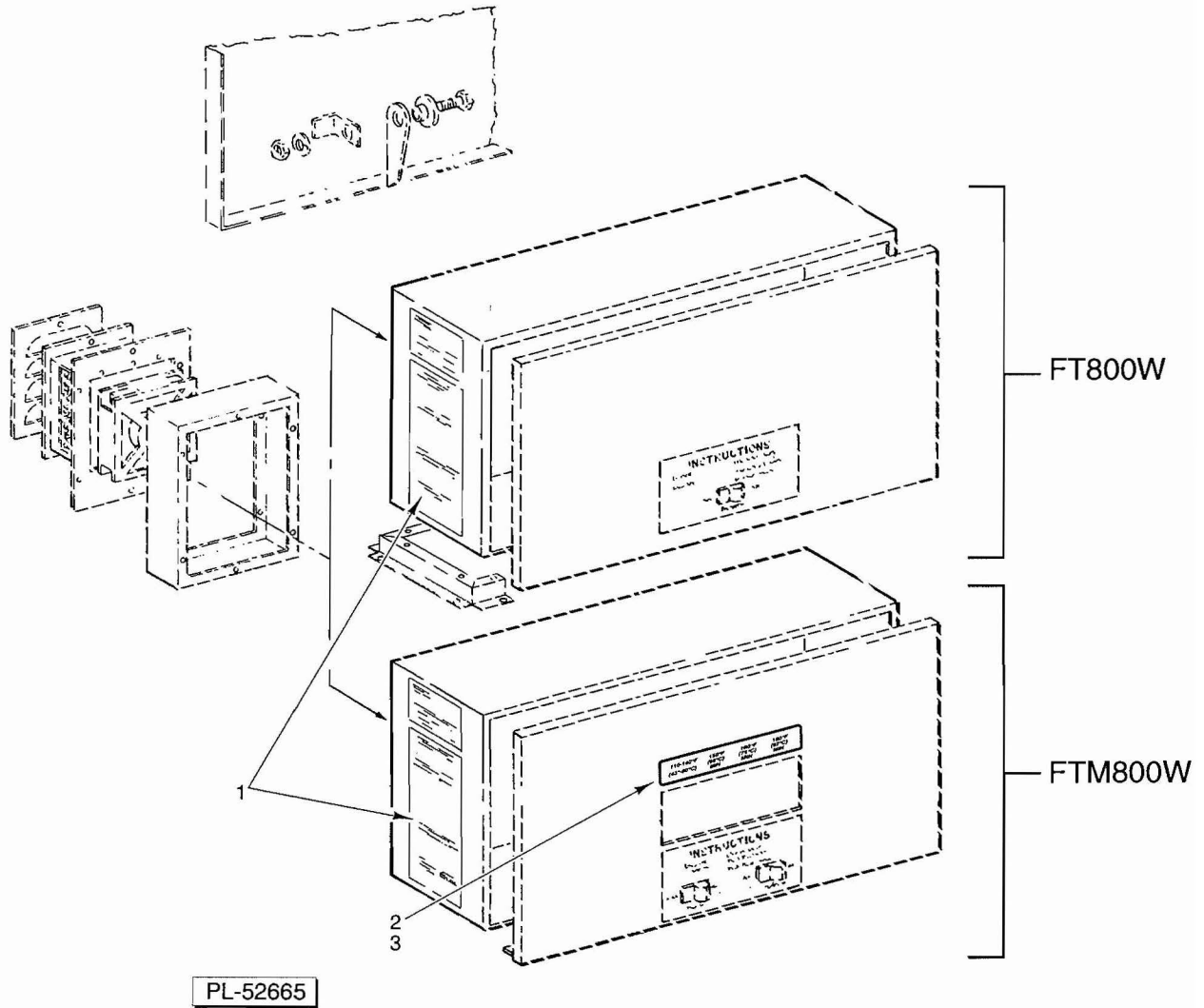
This form contains replacement parts for
machines built with a dual rinse section.

FT/FTM800W DISHWASHER

FORM 33823

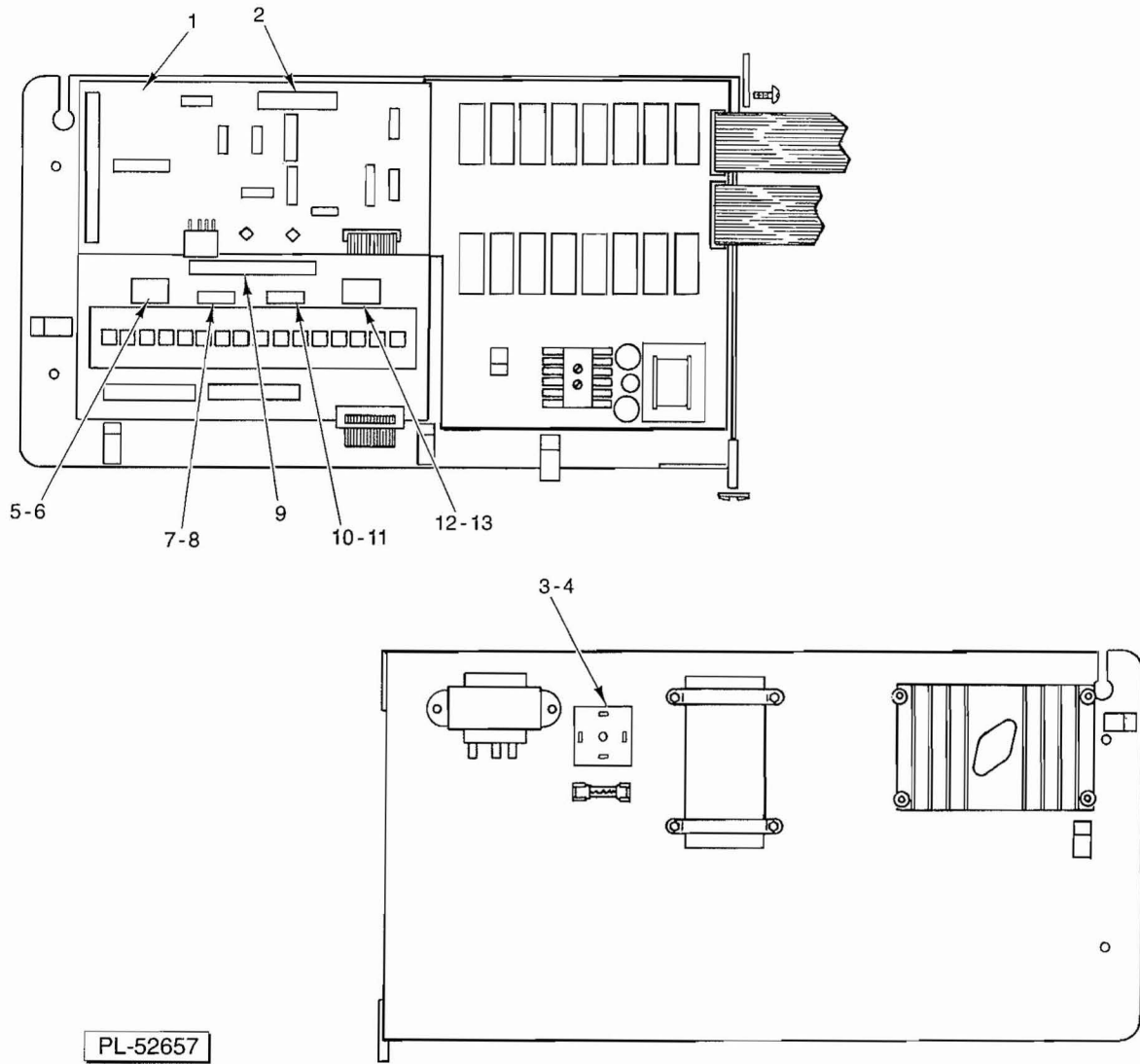
Table of Contents

PAGE	DESCRIPTION
3	Main Control Box
5	Electronic Control (FTM800W)
7	Panels (Lower)(Loading, Center, Unloading)
9	Door, Curtain and Drain Pan
11	Track Unit
13	Rinse Gate
15	Heat-Dual Rinse Tank
17	Dual Rinse Control Box (Base Plate)
19	Lower Final Rinse Piping W/O Booster
21	Pump-Auxiliary Rinse System
23	Inside Final & Auxiliary Rinse System
25	Flow Back Piping
27	Conveyor (Thermal Tray)
28	Conveyor (Type A)



MAIN CONTROL BOX

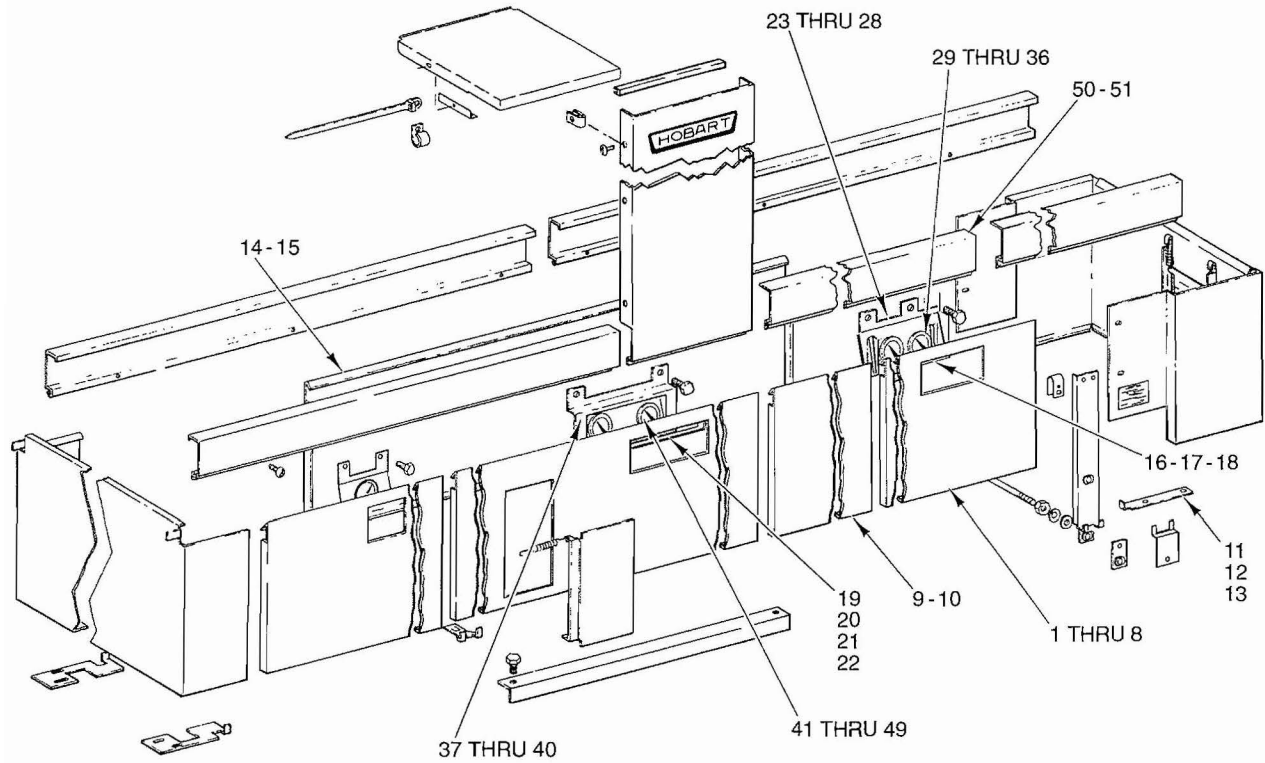
ILLUS.	PART NO.	NAME OF PART	AMT.
PL-52665			
1	00-329171	Label-Instructions (FT/FTM800W)	1
2	00-329424	Plate-Temperature Range L-R (FTM800W)	1
3	00-329425	Plate-Temperature Range R-L (FTM800W)	1
	FE-021-12	Plug - 1/2 Knockout (Plastic)	AR
	FE-021-15	Plug-Conduit	AR



**ELECTRONIC CONTROLS MOUNTING PLATE
(FTM800W)**

**ELECTRONIC CONTROLS MOUNTING PLATE
(FTM800W)**

ILLUS. PL-52657	PART NO.	NAME OF PART	AMT.
1	00-294794-00002	Control Board & Computer Assy. (Incls. item 2)	1
2	00-294859-00002	Computer Assy (Packaged)	1
3	00-473660	Rectifier	1
4	NS-009-12	Mach. Nut 8-32 Hex	1
5	00-185867	Display Label - Prewash	1
6	00-162629	Display Label-Prewash (Bi-Lingual)	1
7	00-185868	Display Label - Wash	1
8	00-162628	Display Label-Wash (Bi-Lingual)	1
9	00-185866	Display Label - Temperature	1
10	00-185869	Display Label - Rinse	1
11	00-162627	Display Label-Rinse (Bi-Lingual)	1
12	00-185870	Display Label - Final Rinse	1
13	00-162626	Display Label-Final Rinse (Bi-Lingual)	1

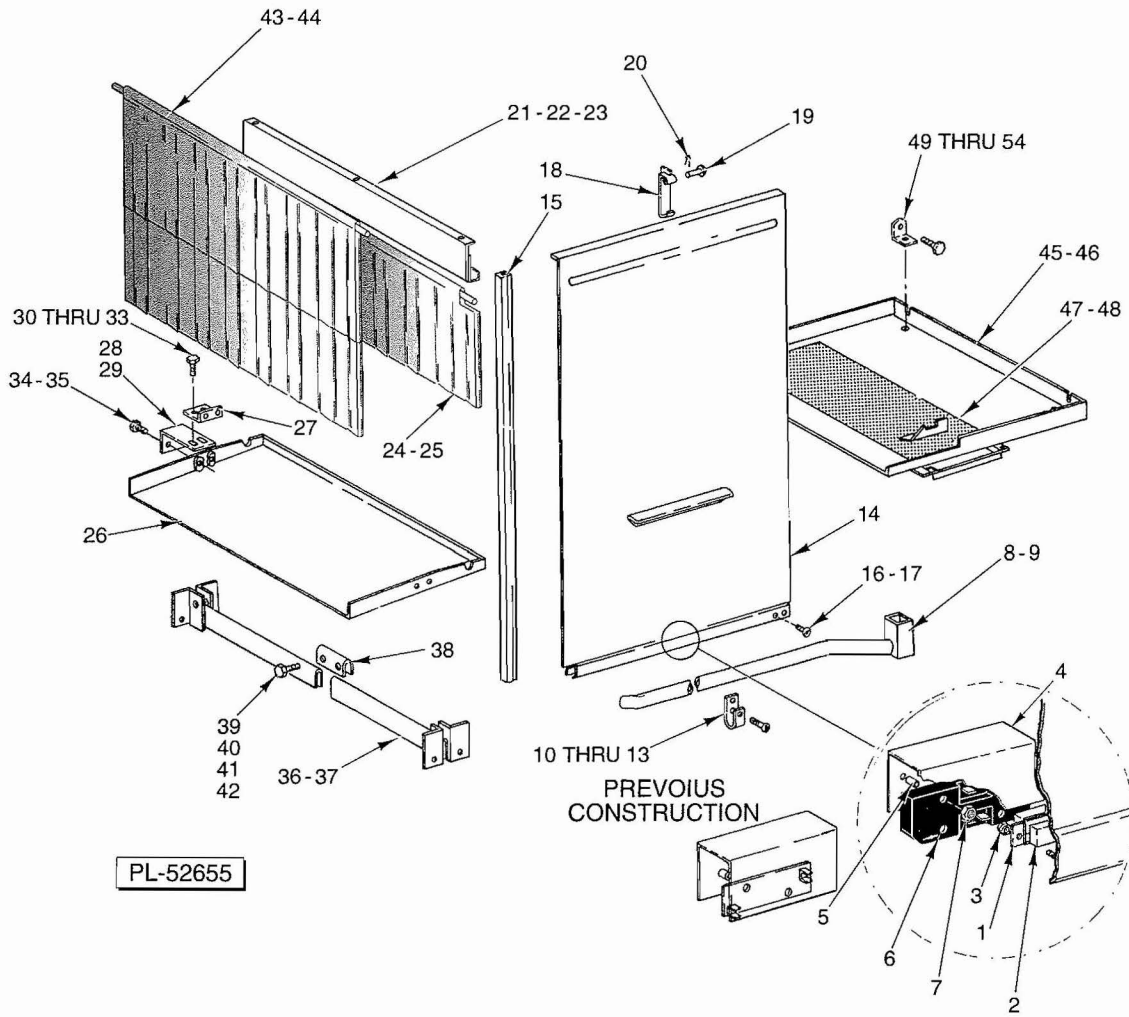


PL-52659

**PANELS (LOWER)
(LOADING, CENTER AND UNLOADING)**

**PANELS (LOWER)
(LOADING, CENTER AND UNLOADING)**

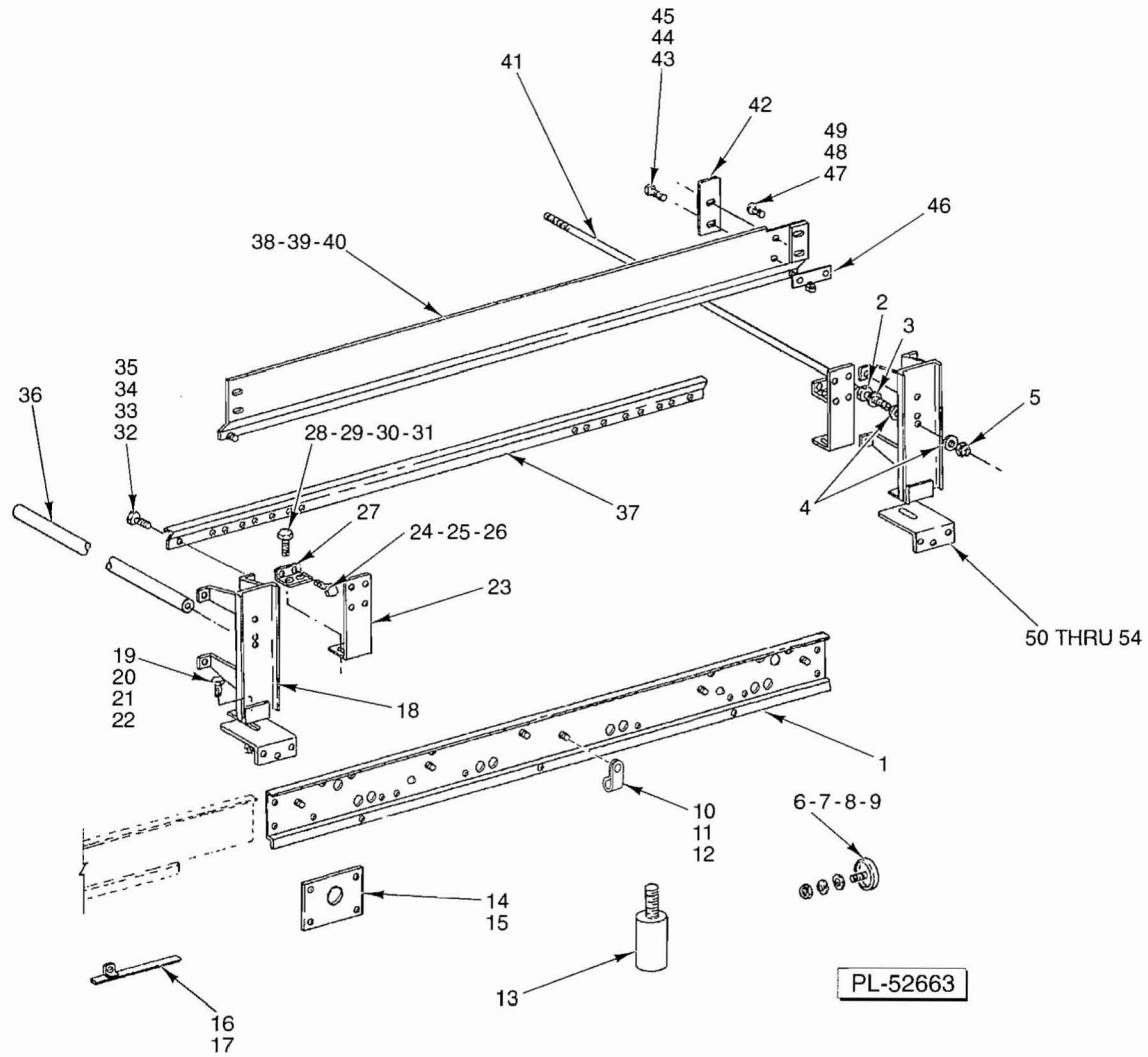
ILLUS. PL-52659	PART NO.	NAME OF PART	AMT.
1	00-328916-00001	Panel-Trim Lower FTM800W (4 Ft Lg)(W/Thermometer Opening)(R-L)	1
2	00-328916-00002	Panel-Trim Lower FT800W (4 Ft Lg)(W/Thermometer Opening)(R-L)	1
3	00-328916-00003	Panel-Trim Lower FTM800W (6 Ft Lg)(W/Thermometer Opening)(R-L)	1
4	00-328916-00004	Panel-Trim Lower FT800W (6 Ft Lg)(W/Thermometer Opening)(R-L)	1
5	00-328916-00005	Panel-Trim Lower FTM800W (4 Ft Lg)(W/Thermometer Opening)(L-R)	1
6	00-328916-00006	Panel-Trim Lower FT800W (4 Ft Lg)(W/Thermometer Opening)(L-R)	1
7	00-328916-00007	Panel-Trim Lower FTM800W (6 Ft Lg)(W/Thermometer Opening)(L-R)	1
8	00-328916-00008	Panel-Trim Lower FT800W (6 Ft Lg)(W/Thermometer Opening)(L-R)	1
9	00-328915-00001	Panel- (3 Ft Lg) R-L Front, L-R Rear	AR
10	00-328915-00002	Panel- (3 Ft Lg) L-R Front, R-L Rear	AR
11	00-289771	Retainer - Panel	AR
12	SC-067-06	Mach. Screw 10-24 x 1/2 Hex Hd.	AR
13	WS-019-06	Washer	AR
14	00-289773-00002	Panel- (6 Ft Lg)(Front or Rear)	AR
15	00-289773-00001	Panel- (4 Ft Lg)(Front or Rear)	AR
16	00-328919	Label-Thermometer FTM800W (Aux Rinse)	AR
17	00-328917	Label-Thermometer R-L;FT800W(Final/Aux Rinse)	AR
18	00-328918	Label-Thermometer L-R;FT800W(Aux Rinse/Final)	AR
19	00-328927	Label-Thermometer Center(R-L;FT800W(Rinse/Wash)	AR
20	00-328928	Label-Thermometer Center (L-R;FT800W(Wash/Rinse)	AR
21	00-162631	Label-Thermometer Center (R-L;FT800W)(Rincage Final/Rincage/Lavage)	AR
22	00-162632	Label-Thermometer Center (L-R;FT800W)(Lavage/Rincage/Rincage Final)	AR
23	00-328880-00001	Support-Double Thermometer R-L;FT800W	1
24	00-328880-00002	Support-Double Thermometer L-R; FT800W	1
25	00-186600	Support-Thermometer FTM800W	1
26	SC-041-11	Cap Screw 5/16-18 x 3/4 Hex Hd. SST	2
27	WL-006-22	Lockwasher 5/16 Light	2
28	NS-015-11	Full Nut 5/16-18 Hex	2
29	00-328696-00002	Thermometer-Rinse (3 Ft)	1
30	00-437041-00003	Thermometer (8 Ft)(FT800W)	1
31	WS-012-40	Washer	3
32	FP-053-05	Pipe Locknut 1/2 NPSL SST	1
33	00-107218	Coupling - Thermometer Bulb	2
34	00-079531	Adapter - Tank	1
35	WS-012-40	Washer	2
36	FP-053-05	Pipe Locknut 1/2 NPSL SST	1
37	00-289533-00002	Support-Thermometer Center FT800W	1
38	SC-041-11	Cap Screw 5/16-18 x 3/4 Hex Hd. SST	2
39	WL-006-22	Lockwasher 5/16 Light	2
40	NS-015-11	Full Nut 5/16-18 Hex	2
41	00-328696-00002	Thermometer (3 Ft)(FT800W)	1
42	00-437041-00003	Thermometer (8 Ft)(FT800W)	1
43	WS-012-40	Washer	4
44	FP-053-05	Pipe Locknut 1/2 NPSL SST	2
45	00-545596	Sealer	AR
46	00-107218	Coupling - Thermometer Bulb	2
47	00-079531	Adapter - Tank	2
48	WS-012-40	Washer	6
49	FP-053-05	Pipe Locknut 1/2 NPSL SST	2
50	00-328886	Cover-Wireway	2
51	SC-053-02	Mach. Screw 10-24 x 1/2 Truss Hd. SST	6



DOOR, CURTAIN AND DRAIN PAN

DOOR, CURTAIN AND DRAIN PAN

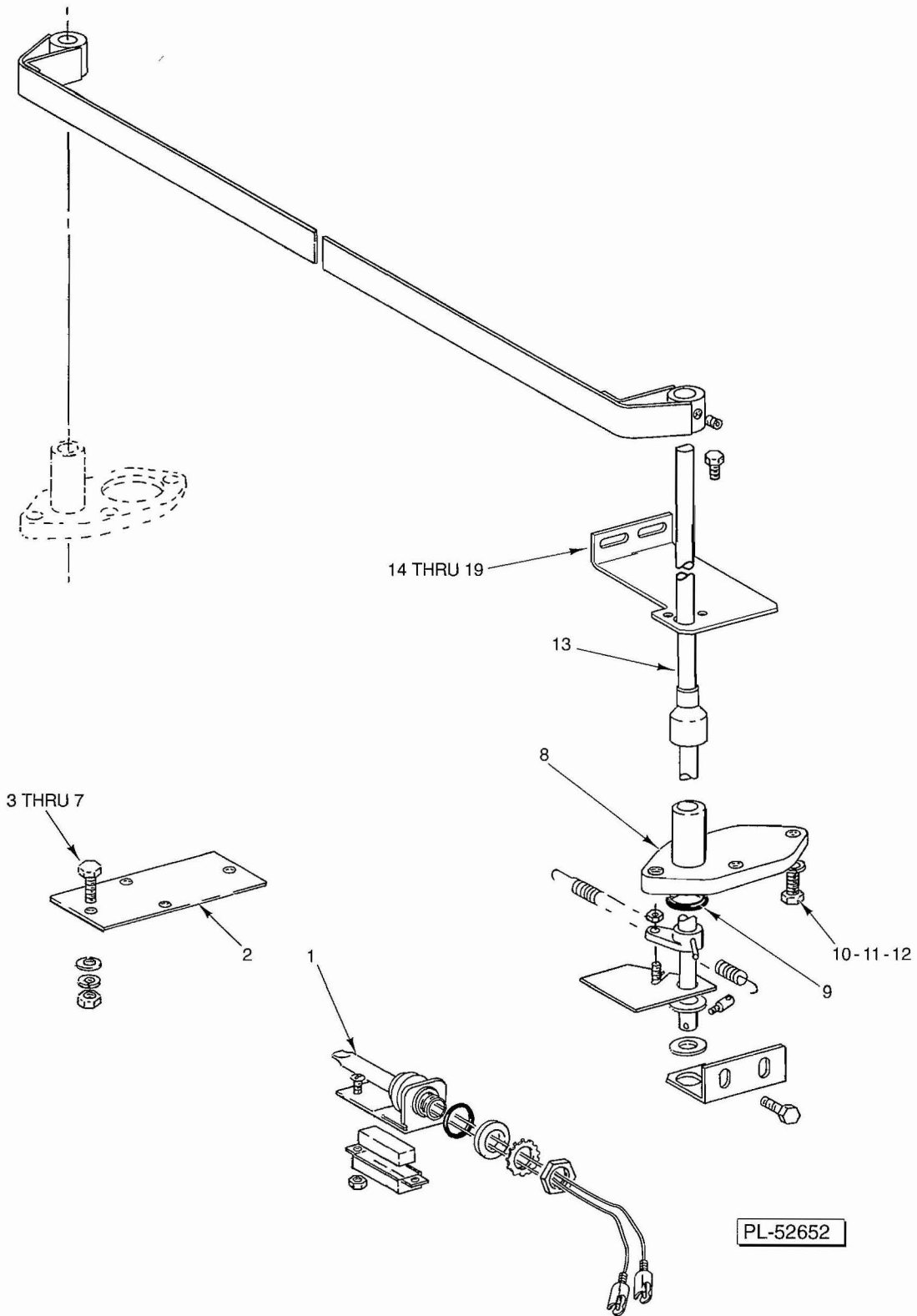
ILLUS. PL-52655	PART NO.	NAME OF PART	AMT.
1	00-290159	Retainer - Magnet	1
2	00-290160	Magnet	1
3	NS-031-50	Stop Nut 6-32 Hex SST	2
4	00-294678	Cover - Mylar	1
5	00-118349	Stand Off - Reed Board (5/16 Lg.)	2
6	00-473415	Reed Switch (Encapsulated)	1
7	NS-031-50	Stop Nut 6-32 Hex SST	2
8	00-328895-00001	Makeup Pipe Assy L-R	1
9	00-328895-00002	Makeup Pipe Assy R-L	1
10	00-185733	Support - Rinse Pipe	1
11	SC-041-05	Cap Screw 1/4-20 x 5/8 Hex Hd.	1
12	WL-006-16	Lockwasher 1/4 Light	1
13	NS-015-01	Full Nut 1/4-20 Hex SST	1
14	00-292177-00001	Door & Handle Assy	1
15	00-112378-00045	Slide - Door	2
16	SC-022-33	Mach. Screw 1/4-20 x 3/4 Flat Hd.	2
17	NS-031-19	Stop Nut 1/4-20 "Elastic" SST	2
18	00-185864	Catch - Door	1
19	00-012114	Pin	1
20	PC-005-02	Cotter Pin 1/16 x 1/2 SST	1
21	00-328879-00001	Baffle-Curtain	1
22	SC-053-05	Mach. Screw 10-24 x 3/8 Truss Hd., Slotted	3
23	WL-006-07	Lockwasher 10 Medium	3
24	00-328890	Curtain-Splash (8 x 31 1/2)	1
25	00-328889	Rod-Curtain	1
26	00-270723	Pan-Drain Back to Load End (29 Wide)	1
27	00-288731	Bracket	2
28	00-185717-00001	Support-Drain Pan (L.H.)	1
29	00-185717-00002	Support-Drain Pan (R.H.)	1
30	SC-041-11	Cap Screw 5/16-18 x 3/4 Hex Hd. SST	4
31	WL-006-22	Lockwasher 5/16 Light	4
32	WS-017-08	Washer	4
33	NS-015-11	Full Nut 5/16-18 Hex	4
34	SC-041-11	Cap Screw 5/16-18 x 3/4 Hex Hd. SST	4
35	WL-006-22	Lockwasher 5/16 Light	4
36	00-289531	Tank Saddle Assy	2
37	00-508454	Sealer (1/8 Rd.)	AR
38	00-081174	Connector - Saddle	1
39	SC-041-02	Cap Screw 1/4-20 x 1 Hex Hd.	2
40	WS-003-49	Washer	2
41	WL-006-16	Lockwasher 1/4 Light	2
42	NS-015-01	Full Nut 1/4-20 Hex SST	2
43	00-120160-00007	Curtain - Splash (19 x 32 5/8)	1
44	00-120267-00003	Rod - Curtain	1
45	00-186170	Final Rinse Drain Back Pan (R-L)	1
46	00-186168	Final Rinse Drain Back Pan (L-R)	1
47	00-185759-00002	Strainer (R-L)	1
48	00-185759-00001	Strainer (L-R)	1
49	00-185732	Bracket	2
50	SC-041-05	Cap Screw 1/4-20 x 5/8 Hex Hd.	2
51	SC-053-42	Mach. Screw 1/4-20 x 5/8 Truss Hd. SST	2
52	WS-022-04	Washer	4
53	WL-006-16	Lockwasher 1/4 Light	4
54	NS-015-01	Full Nut 1/4-20 Hex SST	4



TRACK UNIT

TRACK UNIT

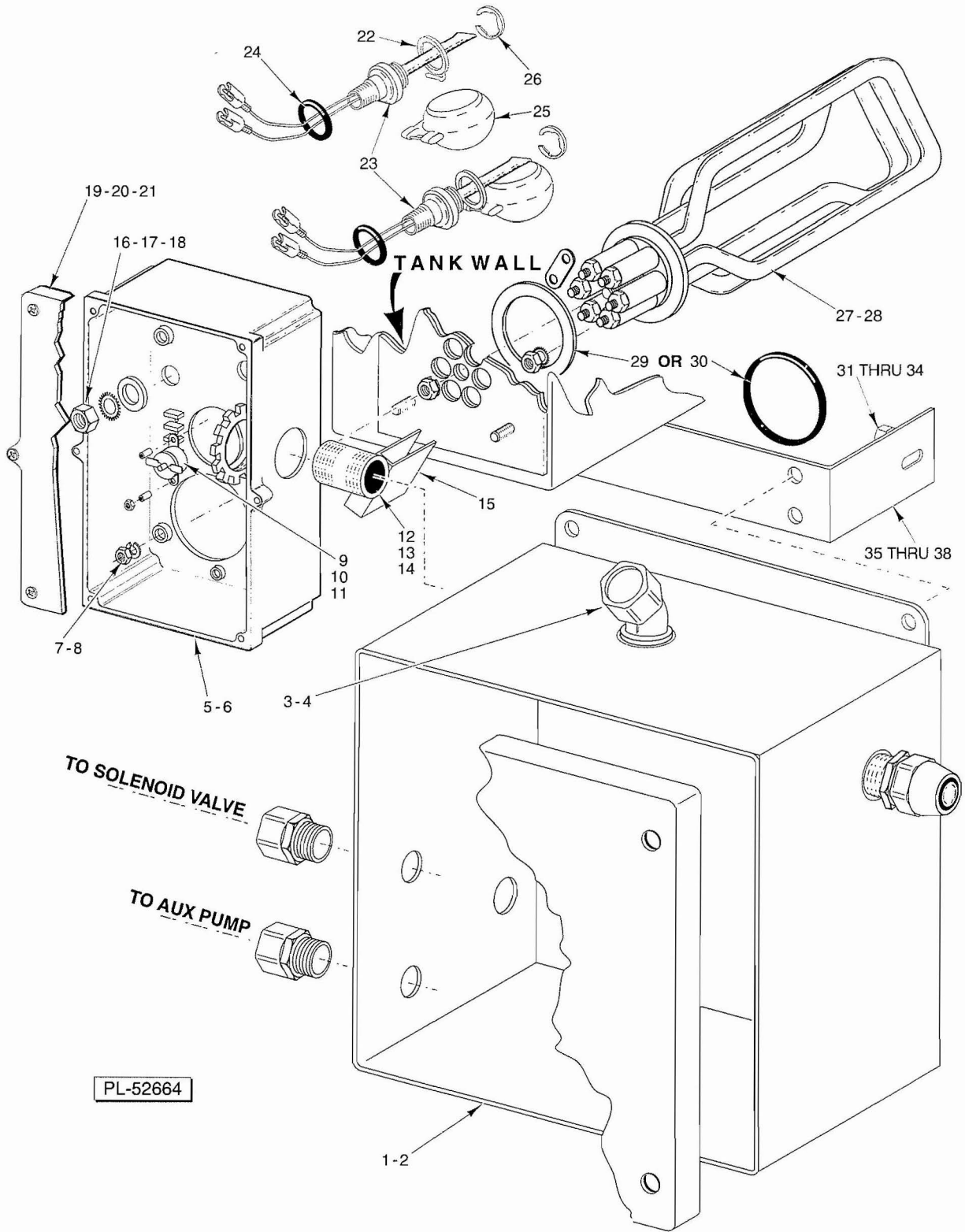
ILLUS. PL-52663	PART NO.	NAME OF PART	AMT.
1	00-328870	Tank Support Assy	2
2	NS-015-13	Full Nut 3/8-16 Hex SST	2
3	WL-006-27	Lockwasher 3/8 Light	2
4	WS-006-44	Washer	4
5	NS-031-33	Stop Nut 3/8-16 "Elastic"	2
6	00-119244	Cap & Stud Assy.	AR
7	WS-022-02	Washer	AR
8	WL-006-17	Lockwasher 1/4 Medium	AR
9	NS-015-01	Full Nut 1/4-20 Hex SST	AR
10	00-294677-00004	Clamp - Wire (1 I.D.)	8
11	WS-019-06	Washer	8
12	NS-031-15	Stop Nut - Special 10-24 Hex (SST)	8
13	00-288655-00002	Foot Assy.	4
14	00-328897	Connector-Section	2
15	SC-041-11	Cap Screw 5/16-18 x 3/4 Hex Hd. SST	4
16	00-289972-00001	Wireway Guard Assy (L.H. Front; R.H. Rear)	2
17	00-289972-00002	Wireway Guard Assy (R.H. Front; L.H. Rear)	2
18	00-289492	Track Support & Bracket Assy	4
19	SC-041-29	Cap Screw 3/8-16 x 7/8 Hex Hd. SST	4
20	WS-006-44	Washer	8
21	WL-006-27	Lockwasher 3/8 Light	4
22	NS-015-13	Full Nut 3/8-16 Hex SST	4
23	00-288728	Support Dish Guide	2
24	SC-041-05	Cap Screw 1/4-20 x 5/8 Hex Hd.	4
25	WL-006-16	Lockwasher 1/4 Light	4
26	NS-015-01	Full Nut 1/4-20 Hex SST	4
27	00-288731	Bracket	2
28	SC-041-11	Cap Screw 5/16-18 x 3/4 Hex Hd. SST	4
29	WS-017-08	Washer	4
30	WL-006-22	Lockwasher 5/16 Light	4
31	NS-015-11	Full Nut 5/16-18 Hex	4
32	SC-041-29	Cap Screw 3/8-16 x 7/8 Hex Hd. SST	16
33	WS-006-44	Washer	16
34	WL-006-27	Lockwasher 3/8 Light	16
35	NS-015-13	Full Nut 3/8-16 Hex SST	14
36	00-186226-00001	Rod - Tie	1
37	00-328876	Track 3 Ft	4
38	00-328877-00001	Dishguide-Front R-L, Rear L-R	1
39	00-328877-00002	Dishguide-Rear R-L, Front L-R (FT800W)	1
40	00-328877-00005	Dishguide-Front (FTM800W)	1
41	00-289501	Rod - Tie	1
42	00-185895	Stop-Rinse Gate (FT800W)	2
43	SC-053-03	Mach. Screw 10-24 x 3/4 Truss Hd., Slotted	4
44	NS-031-16	Stop Nut 10-24 Hex "Elastic" SST	4
45	WS-019-20	Washer	4
46	00-185750	Plate - Dishguide	2
47	SC-053-02	Mach. Screw 10-24 x 1/2 Truss Hd. SST	4
48	WS-019-06	Washer	4
49	NS-031-15	Stop Nut - Special 10-24 Hex (SST)	4
50	00-289491	Bracket - Track	4
51	SC-041-12	Cap Screw 5/16-18 x 7/8 Hex Hd.	8
52	SC-041-11	Cap Screw 5/16-18 x 3/4 Hex Hd. SST	4
53	WL-006-23	Lockwasher 5/16 Medium SST	12
54	NS-015-11	Full Nut 5/16-18 Hex	12
	00-289496-00001	Dishguide-Center Unit (FT/FTM800W)	2



RINSE GATE - FT800W

RINSE GATE - FT800W

ILLUS. PL-52652	PART NO.	NAME OF PART	AMT.
1	00-328486	Switch & Probe Assy.	2
2	00-185762	Flange	AR
3	SC-041-10	Cap Screw 5/16-18 x 5/8 Hex Hd.	AR
4	WS-017-08	Washer	AR
5	00-545595	Sealer	AR
6	WL-006-22	Lockwasher 5/16 Light	AR
7	NS-015-11	Full Nut 5/16-18 Hex	AR
8	00-328133-00001	Plate & Bearing Assy	1
9	00-067500-00072	"O" Ring	1
10	SC-041-11	Cap Screw 5/16-18 x 3/4 Hex Hd. SST	4
11	WS-017-08	Washer	4
12	WL-006-22	Lockwasher 5/16 Light	4
13	00-437105	Shield & Shaft Assy	2
14	00-328881-00001	Bracket-Rinse Gate (R-L)	1
15	00-328881-00002	Bracket-Rinse Gate (L-R)	1
16	SC-041-11	Cap Screw 5/16-18 x 3/4 Hex Hd. SST	2
17	WS-017-08	Washer	2
18	WL-006-22	Lockwasher 5/16 Light	2
19	NS-015-11	Full Nut 5/16-18 Hex	2



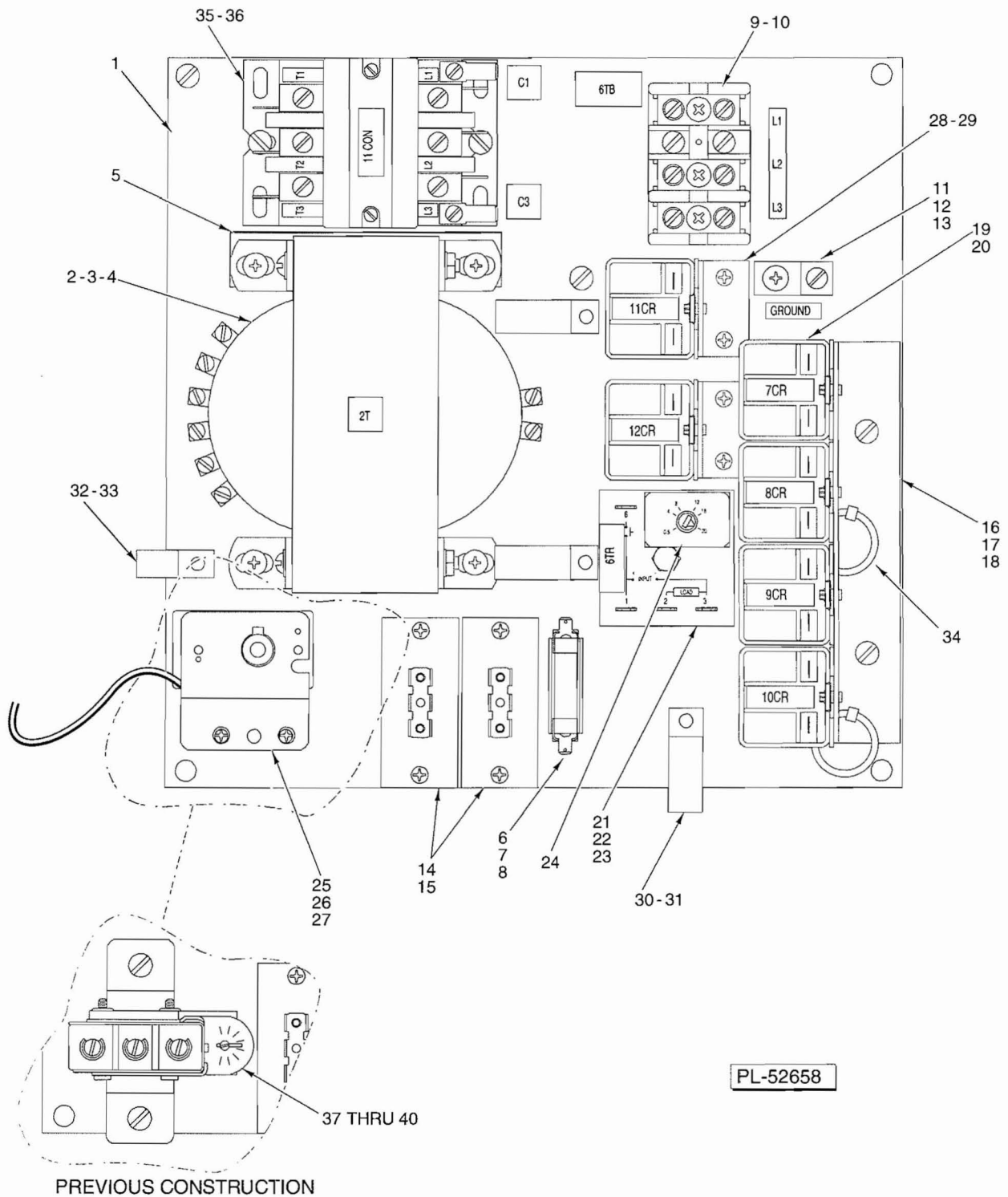
PL-52664

HEAT-DUAL RINSE TANK

HEAT-DUAL RINSE TANK

ILLUS. PL-52664	PART NO.	NAME OF PART	AMT.
*1	00-328947	Box-Dual Rinse Control (L. to R.)	1
*2	00-328904	Box-Dual Rinse Control (R. to L.)	1
3	FE-008-44	Connector 45 Deg. (3/4 Male Thd. x 3/4 Thinwall)	2
4	FE-008-11	Gasket - Electrical	1
5	00-329614	Box-Electric Heat (L. to R.)	1
6	00-329613	Box-Electric Heat (R. to L.)	1
7	WL-006-17	Lockwasher 1/4 Medium	4
8	NS-015-01	Full Nut 1/4-20 Hex SST	4
9	00-294615-00001	Control - Temperature	1
10	00-289364	Spacer	2
11	NS-011-07	Mach. Nut 6-32 Hex	2
12	FE-005-76	Conduit 1 x 3-1/2 RTFL	1
13	FE-008-12	Gasket	2
14	FE-006-50	Lock Nut (Electrical)	4
15	00-086444	Insulator - Terminal (Above 250 V.)	AR
16	WS-010-40	Washer - Thrust	2
17	WL-014-31	Lockwasher 1/2 External Shakeproof SST	2
18	NS-018-28	Jam Nut 1/2-20 Hex	2
19	00-289146-00001	Lid & Gasket Assy. (Incls. item 20)	1
20	00-112005	Gasket (Lid)	1
21	SD-012-20	Self-Tapping Screw 8-32 x 1/2 Phil. Truss Hd., Type T	6
22	00-112467	Retainer - Float	2
23	00-328486	Switch & Probe Assy.	2
24	00-067500-00072	"O" Ring	2
25	00-122674	Float Assy.	2
26	RR-010-13	Retaining Ring	2
27	00-119078-00007	Heater-Electric (208-240V., 60 Hz., 3 Ph.)	1
28	00-119078-00009	Heater-Electric (480V., 60 Hz., 3 Ph.)	1
29	00-119276	Gasket - Heater	1
30	00-067500-00034	"O" Ring (Heater)	1
31	SC-041-11	Cap Screw 5/16-18 x 3/4 Hex Hd. SST	2
32	WS-017-08	Washer	4
33	WL-006-22	Lockwasher 5/16 Light	4
34	NS-015-11	Full Nut 5/16-18 Hex	2
35	00-328878	Bracket-Control Box	2
36	SC-041-05	Cap Screw 1/4-20 x 3/8 Hex Hd.	4
37	WL-006-17	Lockwasher 1/4 Medium	4
38	NS-015-01	Full Nut 1/4-20 Hex SST	4

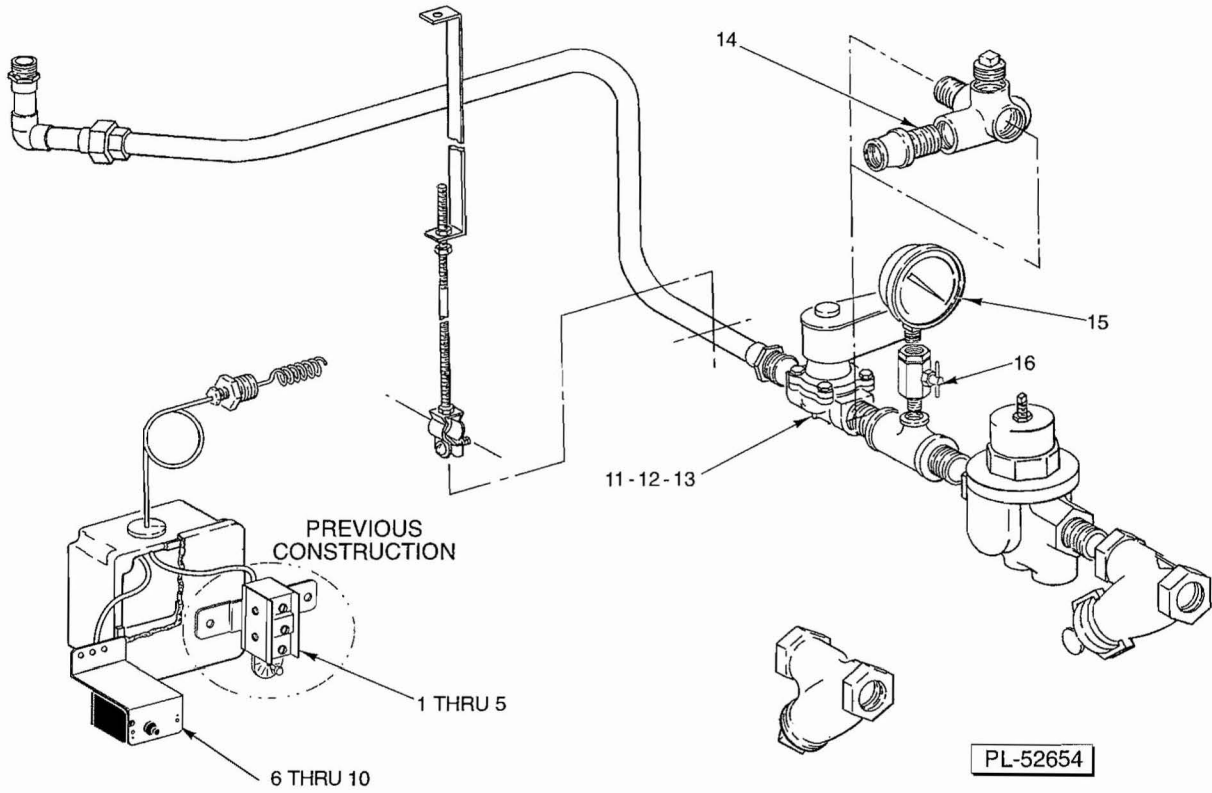
*Give Electrical Spec. & Serial Number.



**DUAL RINSE CONTROL BOX
(BASE PLATE)**

**DUAL RINSE CONTROL BOX
(BASE PLATE)**

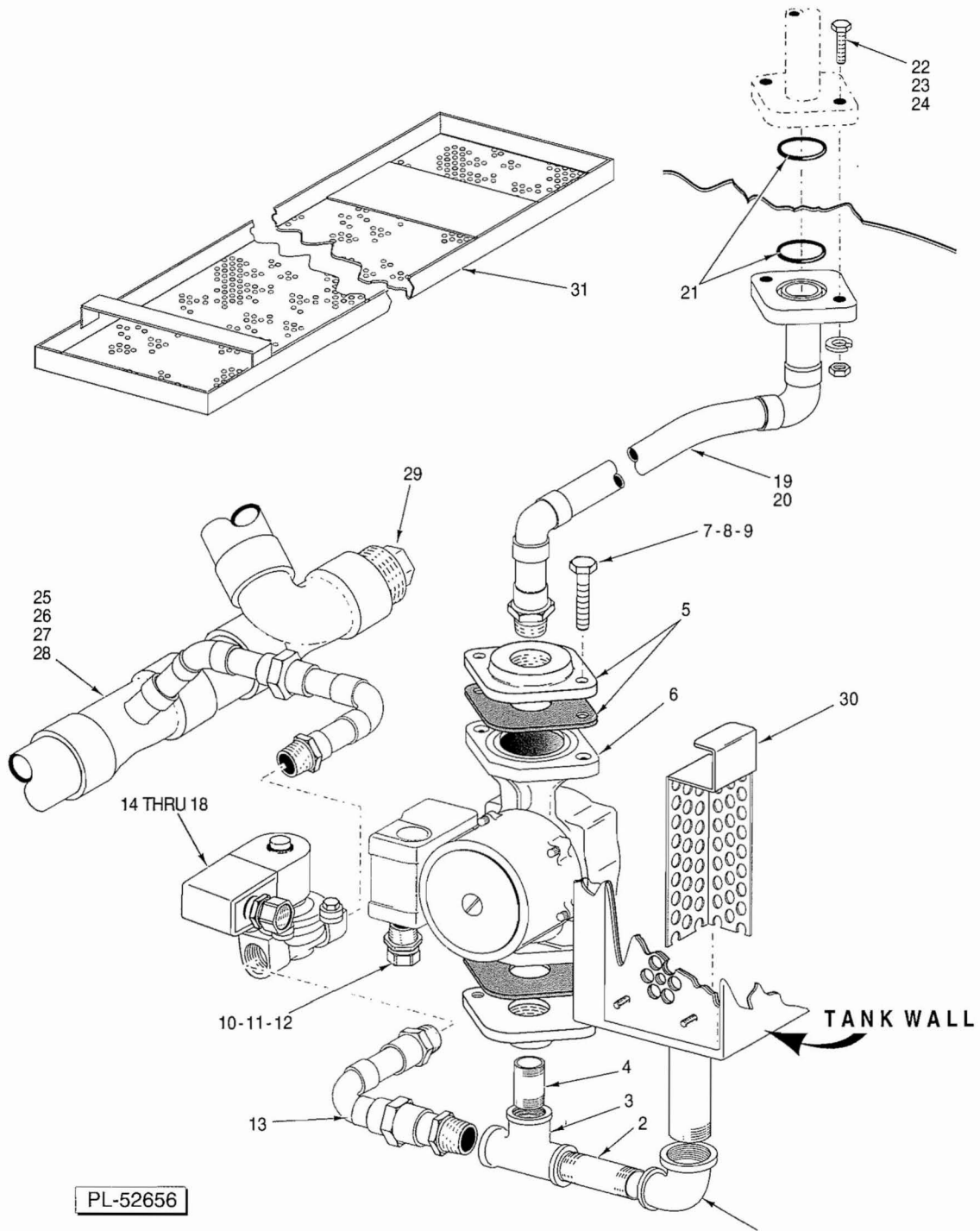
ILLUS. PL-52658	PART NO.	NAME OF PART	AMT.
1	00-328902	Plate-Base	1
2	00-294500-024-3	Transformer (500 VA)	1
3	SD-035-77	Self-Tapping Screw ¼-20 x ¾ Phil.Pan Hd., Type F	4
4	WL-007-15	Lockwasher ¼ External Shakeproof	4
5	00-328920	Barrier	1
6	00-294436-00003	Block - Fuse	1
7	SD-019-29	Self-Tapping Screw 6-20 x ½ Phil Pan Hd., Type B	1
8	FE-023-25	Fuse - 5 Amp.	1
9	00-294325-015-1	Block - Terminal	1
10	SD-037-21	Self-Tapping Screw 8-32 x 1 Fil. Phil Hd., Type F	2
11	00-118544-00002	Lug - Grounding	1
12	SD-035-77	Self-Tapping Screw ¼-20 x ¾ Phil.Pan Hd., Type F	1
13	WL-007-15	Lockwasher ¼ External Shakeproof	1
14	00-294325-00009	Terminal Board	2
15	SD-019-29	Self-Tapping Screw 6-20 x ½ Phil Pan Hd., Type B	4
16	00-437103	Bracket - Relay Mtg.	1
17	SD-008-25	Self-Tapping Screw 10-16 x ¾ Phil Bind Hd., Type B	2
18	WL-014-07	Lockwasher 10 External Shakeproof SST	2
19	00-087714-007-2	Relay - D.P.D.T. (115 V.)	6
20	SD-019-29	Self-Tapping Screw 6-20 x ½ Phil Pan Hd., Type B	12
21	00-087714-00041	Relay - Time Delay	1
22	SD-036-13	Self-Tapping Screw ¼-20 x 1¼ Hex Washer Hd., Type T	1
23	WL-007-15	Lockwasher ¼ External Shakeproof	1
24	00-437070-00002	Module - Plug-on	1
25	00-294681-021-1	Thermostat-Tank Heat	1
26	00-475207	Insulator-Thermostat	1
27	SD-008-25	Self-Tapping Screw 10-16 x ¾ Phil Bind Hd., Type B	2
28	00-437102	Bracket - Relay	2
29	SD-019-29	Self-Tapping Screw 6-20 x ½ Phil Pan Hd., Type B	4
30	00-294677-00004	Clamp - Wire (1 I.D.)	3
31	SD-008-25	Self-Tapping Screw 10-16 x ¾ Phil Bind Hd., Type B	3
32	00-294677-00002	Clamp - Wire (½ I.D.)	1
33	SD-008-25	Self-Tapping Screw 10-16 x ¾ Phil Bind Hd., Type B	1
34	00-083376	Wire Tie	2
35	00-087713-040-2	Contact - 30 Amp 3 Pole	1
36	SD-008-25	Self-Tapping Screw 10-16 x ¾ Phil Bind Hd., Type B	2
37	- - -	Thermostat-No Longer available (Order items 25, 26, 39 & 40)	1
38	SD-008-25	Self-Tapping Screw 10-16 x ¾ Phil Bind Hd., Type B	2
39	00-065890-00114	Terminal-Piggy back	1
40	00-065890-00139	Terminal-Female	3



LOWER FINAL RINSE PIPING W/O BOOSTER

LOWER FINAL RINSE PIPING W/O BOOSTER

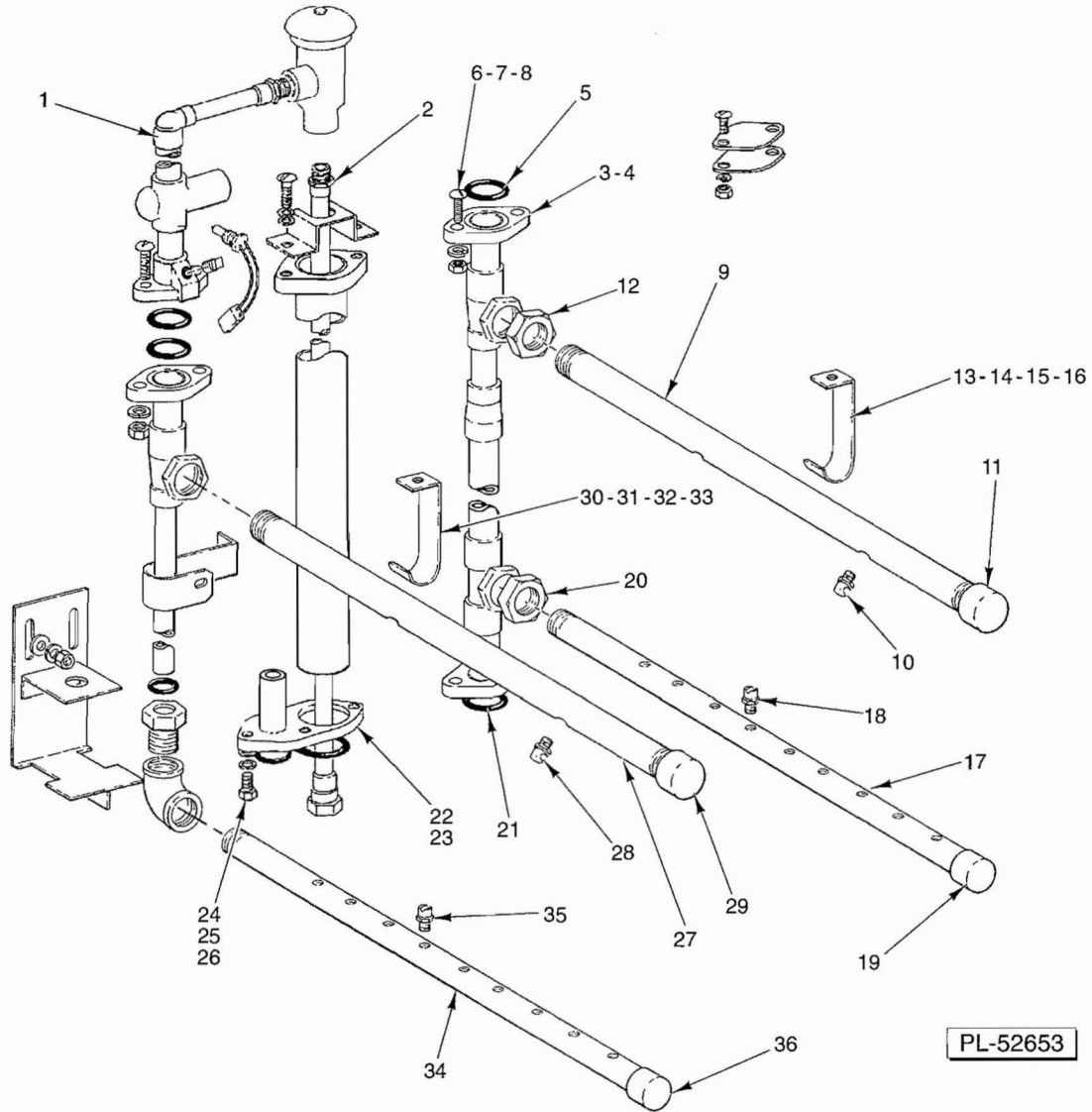
ILLUS. PL-52654	PART NO.	NAME OF PART	AMT.
1	- - -	Thermostat-No Longer available (Order items 4, 5 & 6 and 7 or 8).....	1
2	WL-006-07	Lockwasher 10 Medium	3
3	NS-011-18	Mach. Nut 10-24 Hex SST	3
4	00-065890-00114	Terminal-Piggy back	1
5	00-065890-00139	Terminal-Female	3
6	00-475207	Insulator-Thermostat	1
7	00-294681-021-5	Thermostat-Steam Tank Heat (15 Ft.)	1
8	00-294681-021-3	Thermostat-Electric Tank Heat (11½ Ft.)	1
9	WL-006-07	Lockwasher 10 Medium	3
10	NS-011-18	Mach. Nut 10-24 Hex SST	3
11	00-271002-00001	Solenoid Valve ¾ (120V.)(Incls. items 12 & 13)	1
12	00-271839-00001	Coil - Solenoid Valve	1
13	00-271838	Service Kit -¾ Solenoid Valve	1
14	FP-040-45	Nipple ½ x 1½ Lg.(T.B.E.)	1
15	00-328247	Gauge - Water Pressure	1
16	00-473041	Valve-Ball ¼ Turn	1



PUMP-AUXILIARY RINSE SYSTEM

PUMP-AUXILIARY RINSE SYSTEM

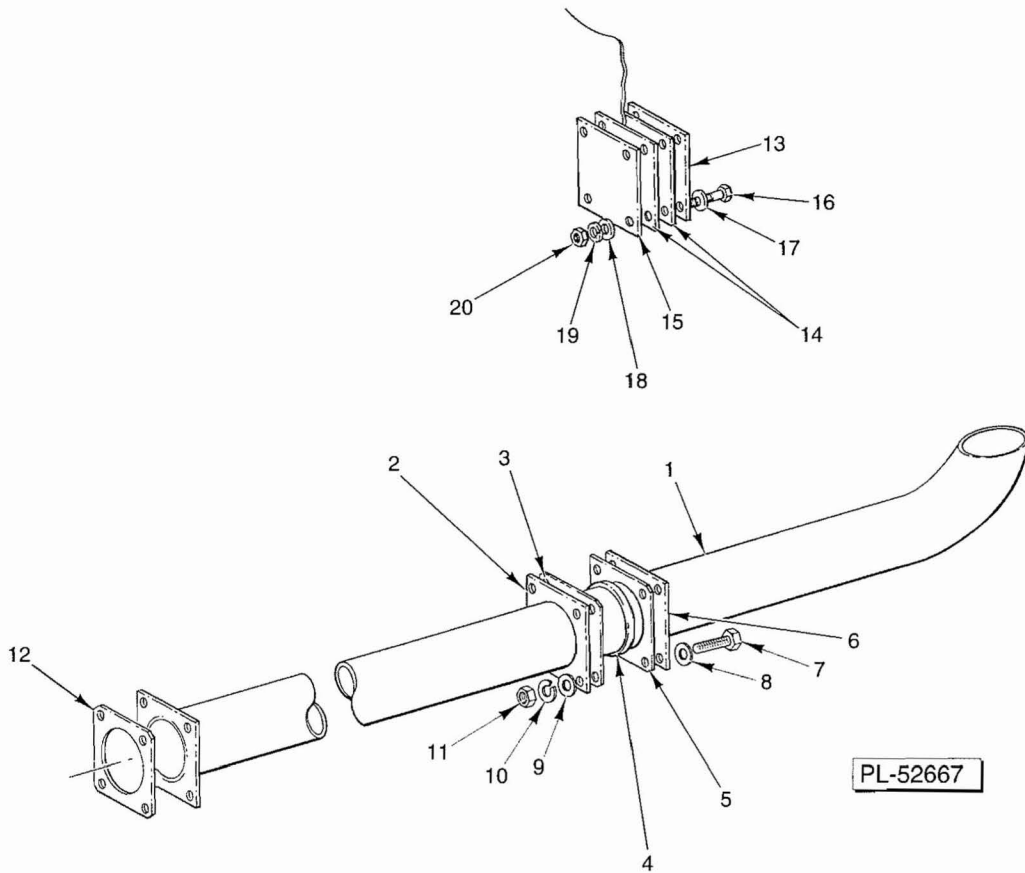
ILLUS. PL-52656	PART NO.	NAME OF PART	AMT.
1	FP-016-18	Elbow-Reducing 1 x 3/4	1
2	FP-042-03	Pipe 3/4 x 6 7/8 Brass	1
3	FP-019-28	Tee 3/4 Bronze	1
4	FP-041-52	Pipe 3/4 x 1 1/2 Brass	1
5	00-328911	Kit-Flange & Gasket (Incls. 2 each)	1
6	00-328910	Pump - Auxiliary Rinse	1
7	SC-121-43	Cap Screw 7/16-14 x 1 3/4 Hex Hd.	4
8	WL-006-32	Lockwasher 7/16 Light	4
9	NS-047-97	Full Nut 7/16-14 Hex	4
10	FE-007-01	Connector - Straight "Sealtite" (1/2 Male Thd. x 3/8 Flex. Cond.)	AR
11	FE-007-02	Connector 45 Deg "Sealtite" (1/2 Male Thd. x 3/8)(L-R)	1
12	FE-008-10	1/2 Gasket Assy.	2
13	00-328908	Piping-Drain Tank to Solenoid	1
14	00-328912-00001	Valve-Solenoid, 3/4 (Incls. items 15 & 16)	1
15	00-329653	Service Kit - Solenoid Valve	1
16	00-329654-00001	Coil - Solenoid Valve	1
17	FE-007-01	Connector - Straight "Sealtite" (1/2 Male Thd. x 3/8 Flex. Cond.)	2
18	FE-008-10	1/2 Gasket Assy.	2
19	00-329634-00001	Piping-Prerinse Outside R-L	1
20	00-329634-00002	Piping-Prerinse Outside L-R	1
21	00-067500-00012	"O" Ring	2
22	SC-041-15	Cap Screw 5/16-18 x 1 1/4 Hex Hd.	2
23	WL-006-22	Lockwasher 5/16 Light	2
24	NS-015-11	Full Nut 5/16-18 Hex	2
25	00-328891-00001	Piping-Drain to Unload R-L	1
26	00-328891-00002	Piping-Drain to Unload L-R	1
27	00-328891-00003	Piping-Drain to Load R-L	1
28	00-328891-00004	Piping-Drain to Load L-R	1
29	00-078987	Plug - Drain 2" Brass	AR
30	00-329615	Cover - Drain	1
31	00-328882	Pan - Strainer	1
	00-546292	Sealer	AR



INSIDE FINAL & AUXILIARY RINSE SYSTEM

INSIDE FINAL & AUXILIARY RINSE SYSTEM

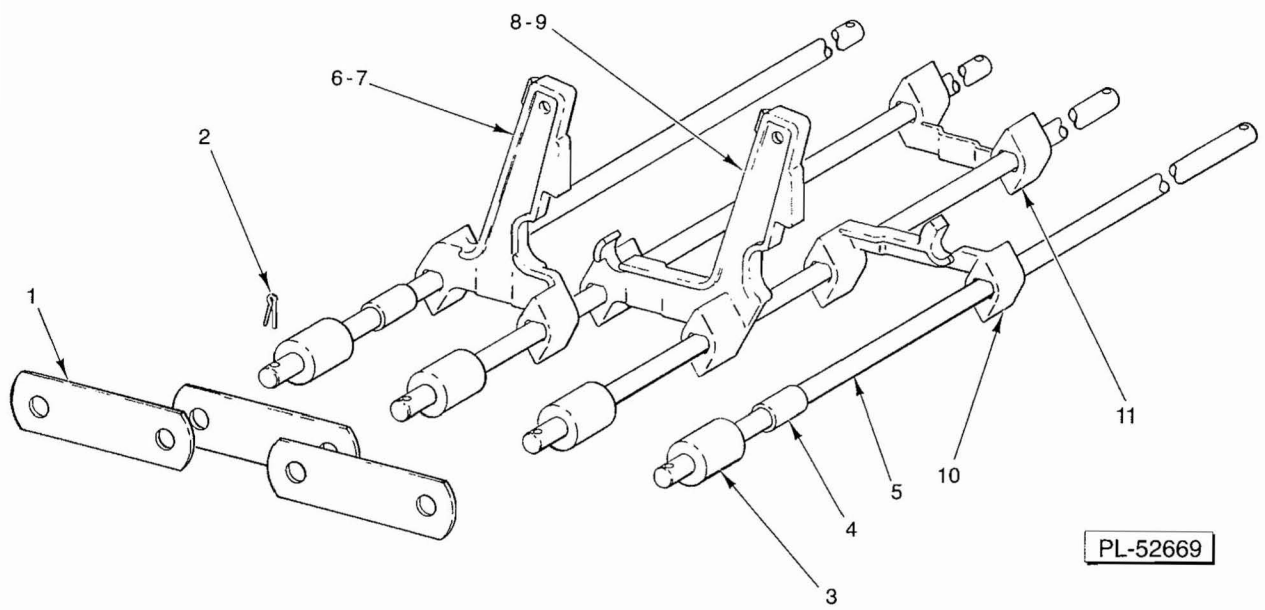
ILLUS. PL-52653	PART NO.	NAME OF PART	AMT.
1	00-270262-00002	Outside Final Rinse Piping (R-L & L-R)	1
2	00-292911-00001	Pipe Assy. (50 1/2 Lg.)	1
3	00-328887	Inside Prerinse Piping Assy (R-L)	1
4	00-328943	Inside Prerinse Piping Assy (L-R)	1
5	00-067500-00012	"O" Ring	1
6	SC-053-18	Mach. Screw 3/16-18 x 3/4 Truss Hd. SST	2
7	WL-006-22	Lockwasher 3/16 Light	2
8	NS-015-11	Full Nut 3/16-18 Hex	2
9	00-329637	Arm-Upper Prerinse (5 Nozzle)	1
10	00-022731-00003	Nozzle-Upper Prerinse (.070 Dia. Hole)	5
11	FP-029-14	Cap 3/4 Pipe	1
12	FP-030-28	Lock Nut 1/4 NPSL Pipe Brass	1
13	00-289564	Bracket - Upper Rinse Arm	1
14	SC-053-02	Mach. Screw 10-24 x 1/2 Truss Hd. SST	1
15	WS-019-06	Washer	1
16	NS-031-15	Stop Nut - Special 10-24 Hex (SST)	1
17	00-329636	Arm-Lower Prerinse (9 Nozzle)	1
18	00-081812	Nozzle-Lower Prerinse (.078 Dia. Hole/Brass)	9
19	FP-029-08	Pipe Cap 1/2 Brass	1
20	FP-030-27	Lock Nut 1/2 NPSL Pipe Brass	1
21	00-067500-00012	"O" Ring	1
22	00-328133-00002	Plate & Bearing Assy. FT800W	1
23	00-437104-00003	Plate-Bearing FTM800W	1
24	SC-041-11	Cap Screw 3/16-18 x 3/4 Hex Hd. SST	4
25	WL-006-22	Lockwasher 3/16 Light	4
26	WS-017-08	Washer	4
27	00-186766	Arm-Upper Final Rinse (5 Nozzle)	1
28	00-022731-00001	Nozzle-Upper Final Rinse (.052 Dia. Hole)	5
29	FP-029-14	Cap 3/4 Pipe	1
30	00-289564	Bracket - Upper Rinse Arm	1
31	SC-053-02	Mach. Screw 10-24 x 1/2 Truss Hd. SST	1
32	WS-019-06	Washer	1
33	NS-031-15	Stop Nut - Special 10-24 Hex (SST)	1
34	00-186767	Arm-Lower Final Rinse (9 Nozzle)	1
35	00-081812-00005	Nozzle-Lower Final Rinse (.052 Dia. Hole/Brass)	9
36	FP-029-08	Pipe Cap 1/2 Brass	1
	00-186768-00003	Upper Prerinse Arm Assy. (Incls. items 9, 10 & 11)	1
	00-186769-00003	Lower Prerinse Arm Assy. (Incls. items 17, 18 & 19)	1
	00-186768-00002	Upper Rinse Arm Assy. (Incls. items 27, 28 & 29)	1
	00-186769-00002	Lower Rinse Arm Assy. (Incls. items 34, 35 & 36)	1



FLOW BACK PIPING

FLOW BACK PIPING

ILLUS. PL-52667	PART NO.	NAME OF PART	AMT.
1	00-328893	Flow Back Piping Assy. (Auxiliary Rinse to Wash)	1
2	00-120115	Retainer - Seal	1
3	00-120603	Gasket - Seal Retainer	1
4	00-077621-00002	Ring - Sealing	1
5	00-120603	Gasket - Seal Retainer	1
6	00-120115	Retainer - Seal	1
7	SC-041-12	Cap Screw $\frac{5}{16}$ -18 x $\frac{7}{8}$ Hex Hd.	8
8	WS-017-08	Washer	8
9	WS-017-08	Washer	8
10	WL-006-22	Lockwasher $\frac{5}{16}$ Light	8
11	NS-015-11	Full Nut $\frac{5}{16}$ -18 Hex	8
12	00-120603	Gasket - Seal Retainer	1
13	00-079812	Plate - Cover	1
14	00-079813	Gasket - Cover Plate	2
15	00-079812	Plate - Cover	1
16	SC-041-12	Cap Screw $\frac{5}{16}$ -18 x $\frac{7}{8}$ Hex Hd.	8
17	WS-017-08	Washer	8
18	WS-017-08	Washer	8
19	WL-006-22	Lockwasher $\frac{5}{16}$ Light	8
20	NS-015-11	Full Nut $\frac{5}{16}$ -18 Hex	8



**CONVEYOR-FT/FTM800W
(THERMAL TRAY)**

**CONVEYOR-FT/FTM800W
(THERMAL TRAY)**

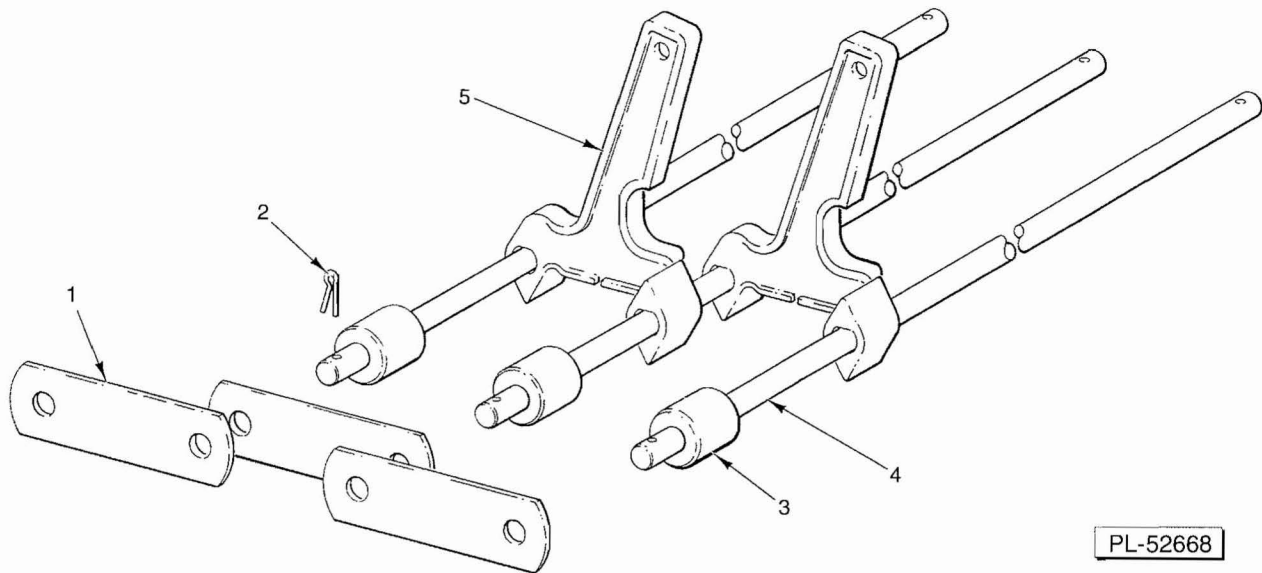
ILLUS. PL-62609	PART NO.	NAME OF PART	AMT.
1	00-289374	Bar - Side Conveyor	See Chart Below
2	PC-005-07	Cotter Pin 3/32 x 1/2	See Chart Below
3	00-473274	Roller Conveyor (Gray Plastic, 1 1/2 Lg.)	See Chart Below
4	00-158677	Spacer - Conveyor	See Chart Below
5	00-081060-00002	Rod - Conveyor	See Chart Below
6	00-291842-00001	Link - Flight (Tray) (Position 1)	See Chart Below
7	00-291842-00002	Link - Flight (Tray) (Position 2)	See Chart Below
8	00-291841-00001	Link - Flight (Tray) (Position 1)	See Chart Below
9	00-291841-00002	Link - Flight (Tray) (Position 2)	See Chart Below
10	00-291840-00001	Link - Flight (Short)	See Chart Below
11	00-291839-00001	Link - Flight (Spacer)	See Chart Below

Illus. Numbers, giving number reqd. per Model
(see listing above for Part No. and Name)

MODEL MACHINE	CONVEYOR ASSY.	AMT.	AMT.	AMT.	AMT.	AMT.	AMT.	AMT.
	(Complete)	1-2-3	4	5	6-8	7-9	10	11
FT/FTM821W	* 00-436383-00021	412	138	206	690	-	897	552
FT/FTM823W	* 00-436383-00023	448	150	224	750	-	975	600
FT/FTM825W	* 00-436383-00025	490	164	245	820	-	1066	656
FT/FTM827W	* 00-436383-00027	532	178	266	890	-	1157	712
FT/FTM829W	* 00-436383-00029	574	192	287	960	-	1248	768
FT/FTM821W	** 00-436383-00022	412	138	206	-	690	897	552
FT/FTM823W	** 00-436383-00024	448	150	224	-	750	975	600
FT/FTM825W	** 00-436383-00026	490	164	245	-	820	1066	656
FT/FTM827W	** 00-436383-00028	532	178	266	-	890	1157	712
FT/FTM829W	** 00-436383-00030	574	192	287	-	960	1248	768

* Position 1 (Incls. items 1 thru 6, 8, 10 & 11)
** Position 2 (Incls. items 1 thru 5, 7, 9, 10 & 11)

FT & FTM800W SERIES DUAL RINSE UNIT REPLACEMENT PARTS



PL-52668

**CONVEYOR-FT/FTM800W
TYPE A (DURA-FLEX)
14 FLIGHT LINKS PER ROD**

ILLUS. PL-52668	PART NO.	NAME OF PART	AMT.
1	00-289374	Bar - Side Conveyor	See Chart Below
2	PC-005-07	Cotter Pin $\frac{3}{32} \times \frac{1}{2}$	See Chart Below
3	00-473274	Roller Conveyor (Gray Plastic, $1\frac{3}{32}$ Lg.)	See Chart Below
4	00-081060-00002	Rod - Conveyor	See Chart Below
5	00-081808	Link - Flight	See Chart Below

Illus. Numbers, giving number reqd. per Model
(see listing above for Part No. and Name)

MODEL MACHINE	CONVEYOR ASSY.	AMT.	AMT.	AMT.
	(Complete)	1-2-3	4	5
FT/FTM821W	00-436382-00011	408	204	2856
FT/FTM823W	00-436382-00012	448	224	3136
FT/FTM825W	00-436382-00013	488	244	3416
FT/FTM827W	00-436382-00014	532	266	3724
FT/FTM829W	00-436382-00015	572	286	4004