



CATALOG OF

REPLACEMENT PARTS

SCALE/PRINTER

SP80/1500

- | | |
|----------|--------|
| ML-28771 | SP80 |
| ML-28794 | SP80 |
| ML-28823 | SP80 |
| ML-28777 | SP1500 |
| ML-28824 | SP1500 |
| ML-28985 | SP1500 |

SP2-1500

- | | |
|----------|---------|
| ML-28776 | SP1500P |
| ML-28793 | SP1500P |
| ML-28986 | SP1500P |
| ML-28775 | SP1500S |
| ML-28778 | CSWS |



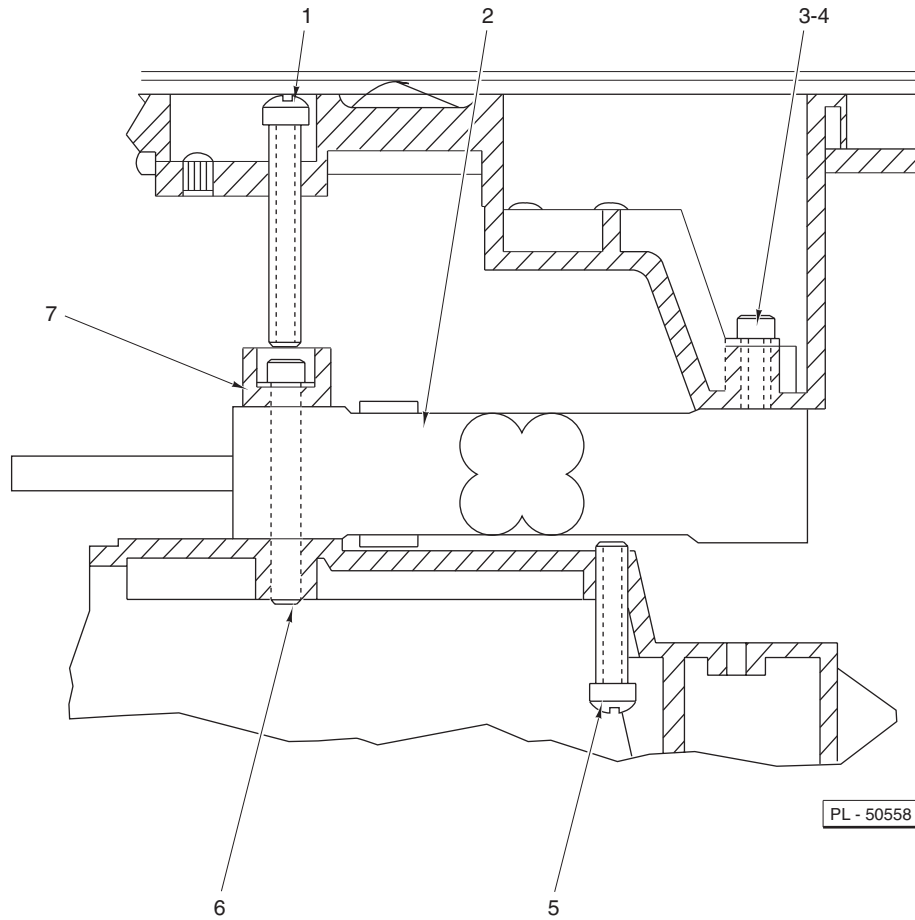
**MODEL
SP80/1500**



**MODEL
SP2-1500**

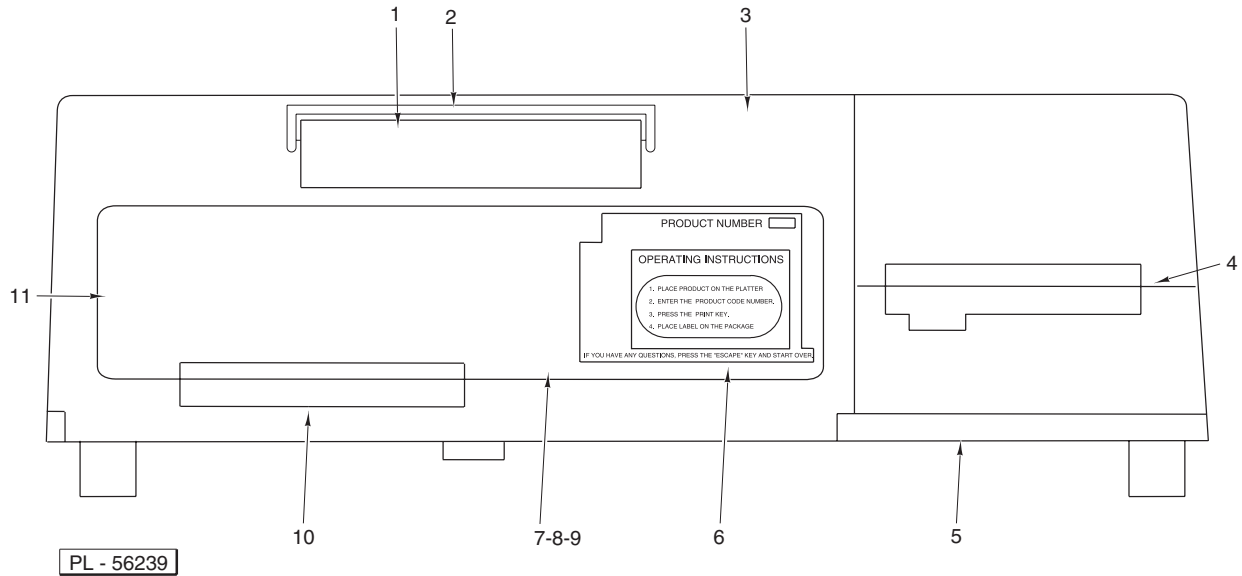
Table of Contents

Page	Description
3	Load Cell SP80/1500
4	Cover SP80/1500 (ML-28771, ML-28777, & ML-28794)
5	Cover SP80/1500 (ML-28823, ML-28824, & ML-28985)
7	Housing SP80/1500
9	Base SP80/1500
11	Printer SP80/1500
13	Printer Housing SP2/1500
14	Printer Base SP2/1500
16	Printer Assembly SP2/1500
19	SPS & CSWS Scales
21	Platform
23	Scalemaster Interface Kit



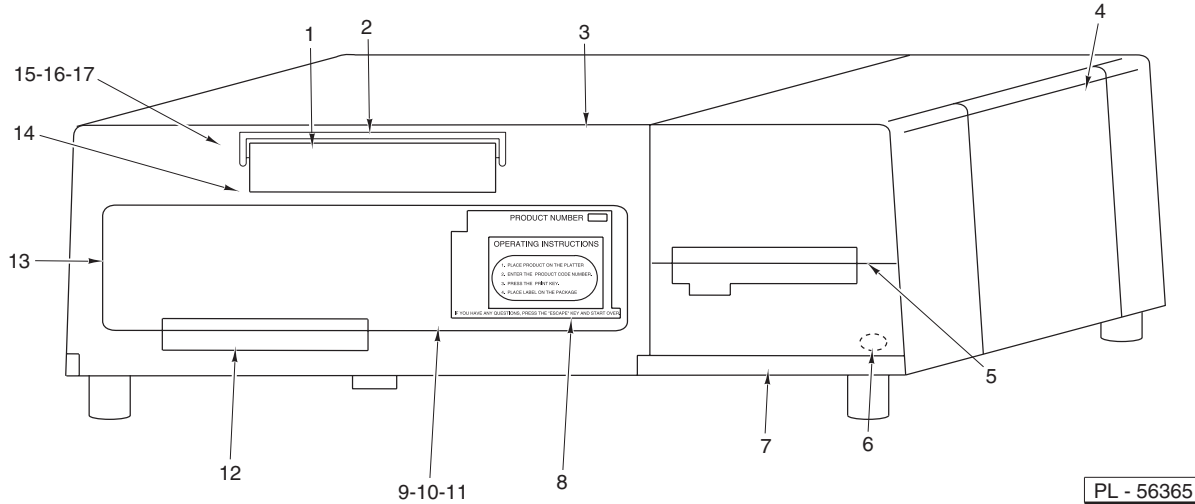
LOAD CELL SP80/1500

ILLUS.	PART NO.	NAME OF PART	AMT.
PL-50558			
1	SC-121-10	Mach. Screw 1/4-28 x 2 Phil. Fil. Hd.	1
2	00-048625	Load Cell Kit (HBM)	1
3	SC-113-29	Cap Screw 1/4-20 x 7/8 Socket Hex Hd.	2
4	WL-006-16	Lockwasher 1/4 Light (SST)	2
5	00-259169	Screw – Overload Stop	1
6	SC-040-11	Cap Screw 1/4-20 x 2 Socket Hex Hd.	2
7	00-183874	Block – Stop	1



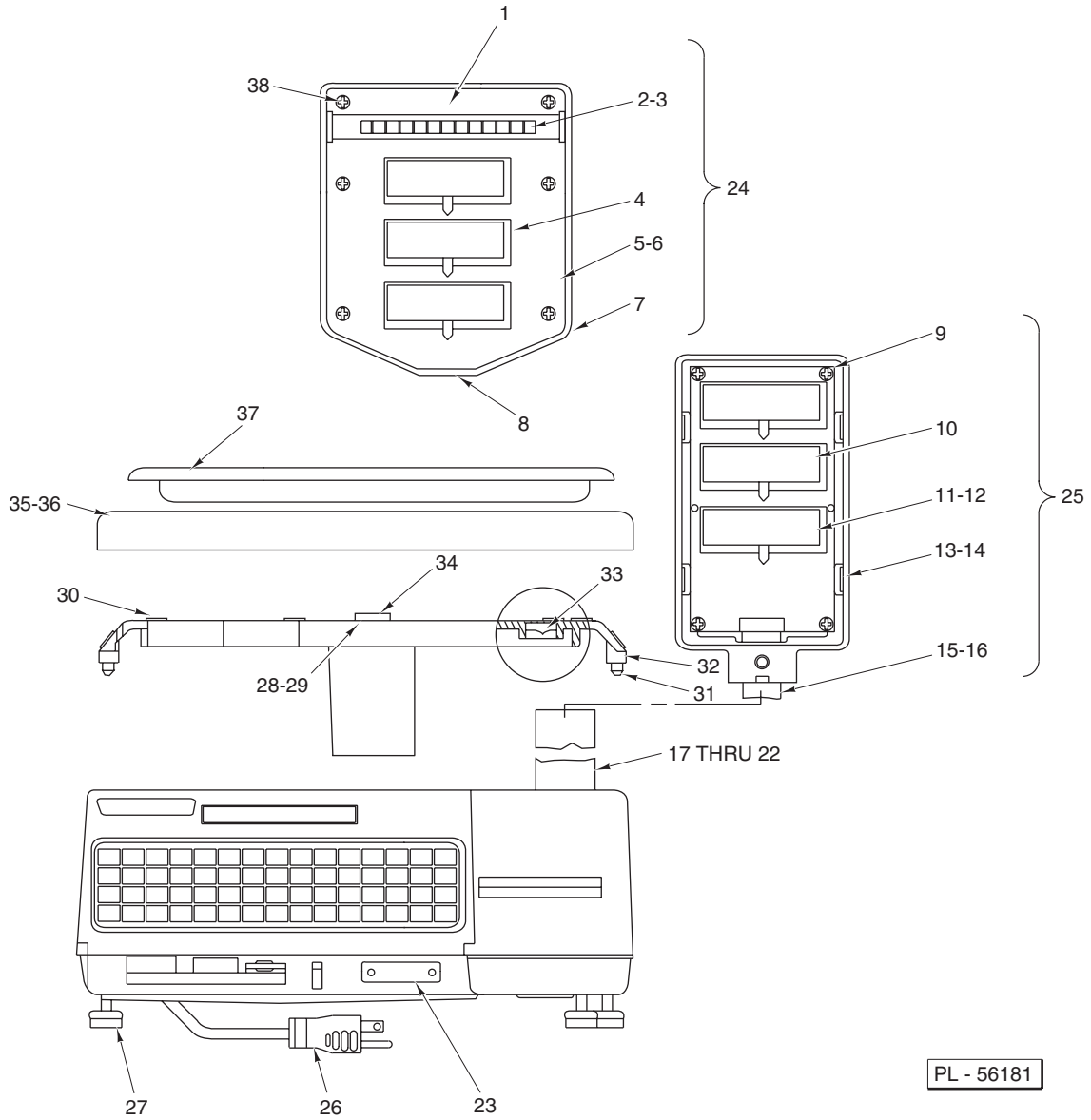
**COVER
SP80/1500
(ML-28771, ML-28777, & ML-28794)**

ILLUS.	PART NO.	NAME OF PART	AMT.
PL-56239			
1	00-183656	Alpha Numeric Display Assy.	1
2	00-042858	Shield Assy. – Ambient Light	1
3	00-046420	Bezel Assy.	1
4	00-259949	Tear Bar Assy.	1
5	00-184158	Cover Assy. (Incls. Items 1, 4, 5, 7, & 10)	1
6	00-184266	Overlay – Keyboard	1
7	00-259180	Keyboard	1
8	00-259376	Labels – Blank	1
9	00-259377	Labels – Keyboard (1/4, 1/2, Price)	1
10	00259688	Retainer – Overlay	1
11	00-259540	Overlay – Supervisor	1
	00-526582	Sealer	AR
	00-520228	Adhesive – Loctite 242	AR
	00-519504	Thermo Joint Compound (2 oz.)	AR
	00-514890	Sealant	AR
	00-532280	Adhesive	AR
	00-183896	Lead Seal Kit	AR



**COVER
SP80/1500
(ML-28823, ML-28824, & ML-28985)**

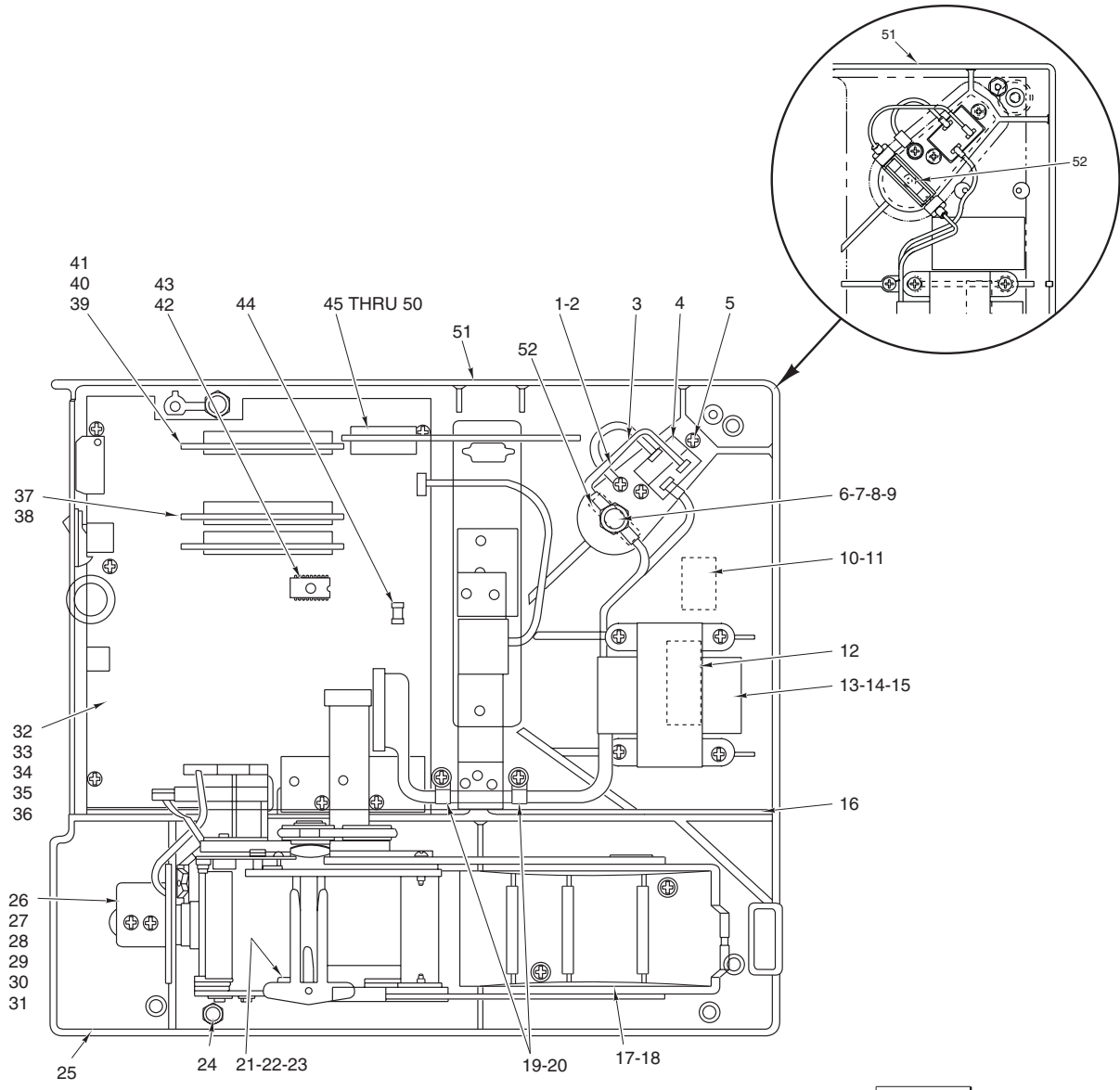
ILLUS.	PART NO.	NAME OF PART	AMT.
PL-56365			
1	00-183656	Alpha Numeric Display Assy.	1
2	00-042858	Shield Assy. – Ambient Light	1
3	00-046420	Bezel Assy.	1
4	00-042706	Door Assy. – Printer Access	1
5	00-044332	Tear Bar Assy.	1
6	00-047015	Plug – Transparent	1
7	00-047389-00001	Cover Assy. (Incls. Items 1, 4, 6 thru 11, 13, & 16)	1
8	00-184266	Overlay – Keyboard	1
9	00-047388	Keyboard	1
10	00-259376	Labels – Blank	1
11	00-259377	Labels – Keyboard (1/4, 1/2, Price)	1
12	00259688	Retainer – Overlay	1
13	00-259540	Overlay – Supervisor	1
14	00-042714	Stud – Press	3
15	00-042715	Spacer	3
16	WL-003-03	Lockwasher	3
17	NS-009-02	Nut	3
	00-526582	Sealer	AR
	00-520228	Adhesive – Loctite 242	AR
	00-519504	Thermo Joint Compound (2 oz.)	AR
	00-528489	Sealant	AR
	00-541890	Sealant	AR
	00-532280	Adhesive	AR
	00-183896	Lead Seal Kit	AR



HOUSING SP80/1500

HOUSING SP80/1500

ILLUS.	PART NO.	NAME OF PART	AMT.
PL-56181			
1	00-184388	Plate Assy. – Upper	1
2	00-041869	Board Assy. – Double Marquee	1
3	00-259493	Board Assy. – Single Marquee	1
4	00-184381	Screen	2
5	00-184384	Plate Assy. – Lower	1
6	SC-022-63	Mach. Screw 8-32 x 5/8 Phil. Flat Hd. (SST)	2
7	00-184380	Housing – Marquee	1
8	00-259695	Clip – Antistatic	1
9	SD-017-06	Self-Tapping Screw 6-20 x 1/2 Phil. Bndg. Hd., Type AB	4
10	00-259145	Display Board Assy.	1
11	00-259164	Screen – Operator	1
12	00-259165	Screen – Customer	1
13	00-175485	Housing – Display	1
14	00-259824	Clip – Retaining	1
15	00-259155	Cable – Numeric Display	1
16	SC-022-07	Mach. Screw 8-32 x 1/2 Flat Hd. (SST)	2
17	00-259172	Display Post Assy. (Incls. Items 15, 20, 21, & 22)	1
18	00-259437	Post – Display (14 In.)	1
19	00-259484	Insulator – Post (13.360 In.) (Use with item 18)	1
20	SC-089-04	Cap Screw 1/4-20 x 1 Soc. Hex Hd.	1
21	SC-115-35	Mach. Screw 8-32 x 1/2 Phil. Flat Hd. (SST)	2
22	00-047333	Bar – Draw Down	1
23	00-183896	Inspection Plate Kit (Incls. Screws & Lockwashers)	1
24	00-184386	Display Assy. (Incls. Items 1 thru 8 & 38)	1
25	00-259991	Display Assy. (Incls. Items 9 thru 14 & 16)	1
26	00-257200	Cord – Power Supply (Straight Plug)	1
27	00-259167	Foot	4
28	00-259188	Plug – Cap 1/4	2
29	00-259208	Plug – Cap 3/16	1
30	00-259185	Pad – Platter	5
31	SC-088-51	Set Screw 10-32 x 3/8 Hdls., Half Dog Pt.	4
32	00-259162-00001	Platter Support Assy. (Incls. Items 30, 33, & 35)	1
33	00-013931	Level – Spirit	1
34	00-257114	Contact – Finger	1
35	00-259246	Platter	1
36	00-184370	Cover – Clear	1
37	00-183358	Kit – Fish Pan & Arms	1
38	SC-113-37	Mach. Screw 6-32 x 5/8 Phil. Pan Hd.	6
	00-259684	Label – Threading	1



PL - 56414

BASE SP80/1500

BASE SP80/1500

ILLUS. PL-56414	PART NO.	NAME OF PART	AMT.
1	SC-015-40	Self-Tapping Screw 8-32 x 3/8 Phil. Pan Hd., Type TT	1
2	WL-007-07	Lockwasher #8 External Shakeproof	1
3	00-183235	Wire Assy.	1
4	00-258120	Filter – Power Input	1
5	SC-015-38	Self-Tapping Screw 6-32 x 3/8 Phil. Pan Hd., Type TT	2
6	00-258145	Fuse Holder & Nut (120/60/1)	1
7	00-184580	Fuse Holder & Nut (220/50/1)	1
8	FE-017-03	Fuse (2 Amp.) (120/60/1)	1
9	FE-022-29	Fuse (2 Amp.) (220/50/1)	1
10	00-259141	Label – Fuse (120/60/1)	1
11	00-184564	Label – Fuse (220/50/1)	1
12	00-184336	Label – Interference Warning	1
13	00-259143	Transformer Assy. (120/60/1)	1
14	00-184547	Transformer Assy. (220/50/1)	1
15	SD-015-40	Self-Tapping Screw 8-32 x 3/8 Phil. Pan Hd., Type TT	4
16	00-259161	Shield	1
17	00-259175	Paper Roll Holder Assy.	1
18	SD-015-40	Self-Tapping Screw 8-32 x 3/8 Phil. Pan Hd., Type TT	2
19	00-259412	Clamp – Cable	2
20	SD-015-40	Self-Tapping Screw 8-32 x 3/8 Phil. Pan Hd., Type TT	2
21	00-259176	Bar – Cable Hold Down	1
22	00-259603	Bar – Hold Down	1
23	SD-015-40	Self-Tapping Screw 8-32 x 3/8 Phil. Pan Hd., Type TT	2
24	00-252222	Post – Cabinet	2
25	00-049427	Base (ML-28771, ML-28794, ML-28823, ML-28777, & ML-28824)	1
26	00-259178	Bracket – Label Taken Sensor	1
27	SD-015-40	Self-Tapping Screw 8-32 x 3/8 Phil. Pan Hd., Type TT	2
28	00-183699	Label Taken Sensor Assy. (With Plug) (Used On Machines Before 1-92) (Sensor Only)	1
29	SC-120-27	Mach. Screw 4-40 x 7/16 Phil. Rd. Hd.	1
30	WL-003-03	Lockwasher #4 Medium	1
31	00-183700	Board – Label Taken Sensor (Incls. Item 28)	1
32	00-259300-00001	Main Board Assy. (SP80)	1
33	00-259300-00002	Main Board Assy. (SP1500)	1
34	00-259170	Insulator – Mylar	1
35	00-252289	Plug – 2 Position (Jumper)	AR
36	SD-015-40	Self-Tapping Screw 8-32 x 3/8 Phil. Pan Hd., Type TT	6
37	00-184139	RAM Board (512K)	1
38	00-184603	RAM Board (1 Meg.)	1
39	00-184636-00101	PROM Board (nonFDA)	1
*40	00-184636-00202	PROM Board (FDA1)	1
**41	00-184636-00301	PROM Board (FDA2) (SP1500)	1
***42	00-184361	IC-EPR0M (68HC11) (Used With Original Style Media Sensor)	1
***43	00-046627	IC-EPR0M (68HC11) (Used With Reflective Style Media Sensor)	1
44	FE-025-15	Fuse (5 Amp.)	1
45	00-259374	Network Board	1
46	00-183913	Clockboard – RTC	1
47	00-184101	Bracket – Retainer	1
48	SC-113-10	Mach. Screw 4-40 x 3/8 Phil. Pan Hd.	3
49	WL-003-03	Lockwasher #4 Medium	3
50	00-257128	Special Screwlock Assy. (Female)	2
51	00-046414	Base (ML-28985)	1
52	00-046576	Fuse Holder (ML-28985)	1
****	00-257194	Shell – Junction	1
****	00-257195	Socket – Connector	1
****	00-257196	Screw Lock Assy.	2
****	WL-008-45	Lockwasher #4 Internal Shakeproof	2
****	WL-007-07	Lockwasher #8 External Shakeproof (Use With Item 13)	1
*****	TL-084919	Anti-Electrostatic Damage Kit	AR

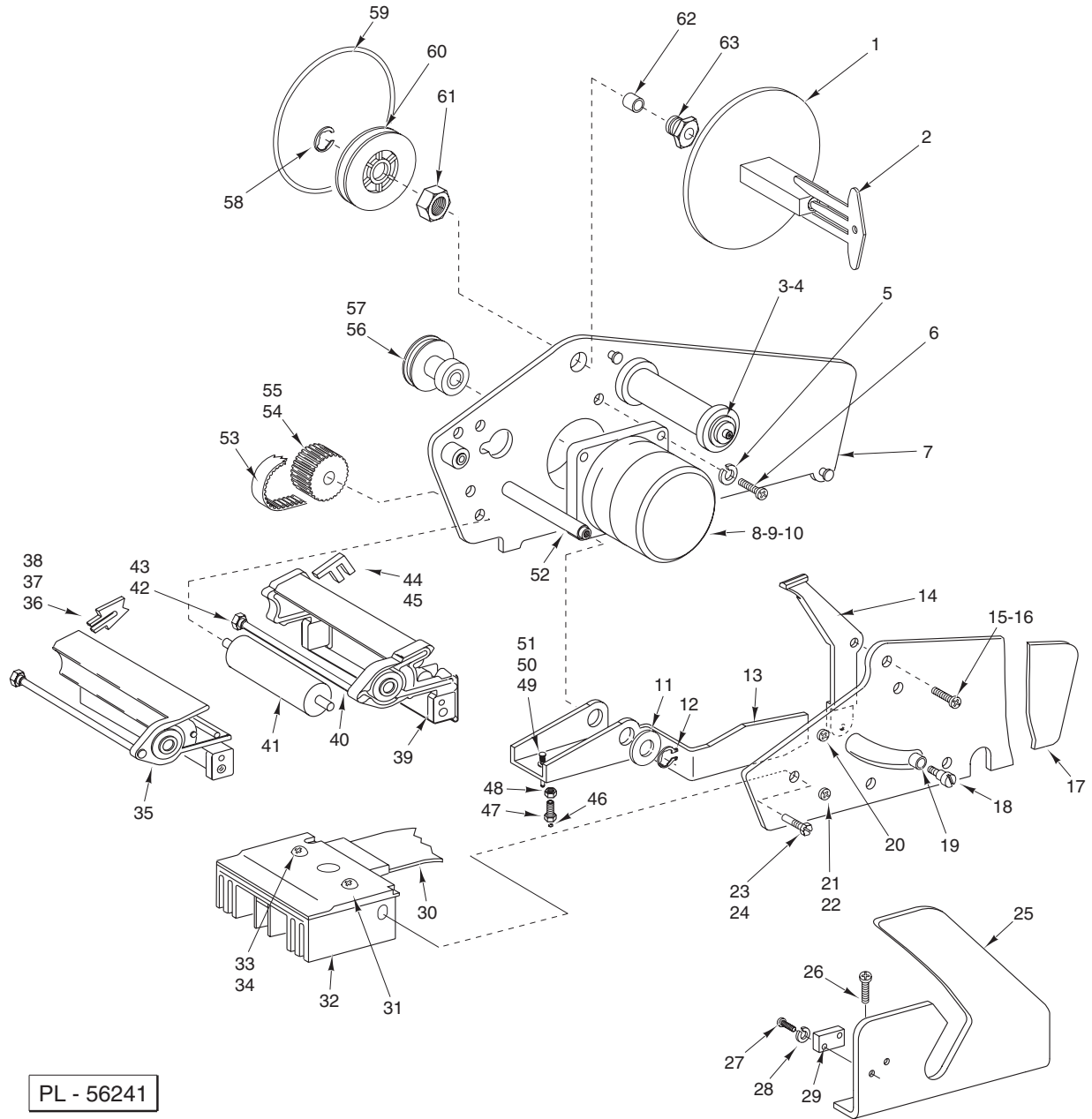
*For Use With ScaleMaster.

**For Use With Ultima and Quantum.

***Use with SP80/SP1500 Printer on Page 11.

****Order For Use With MiniNetwork System or ScaleMaster.

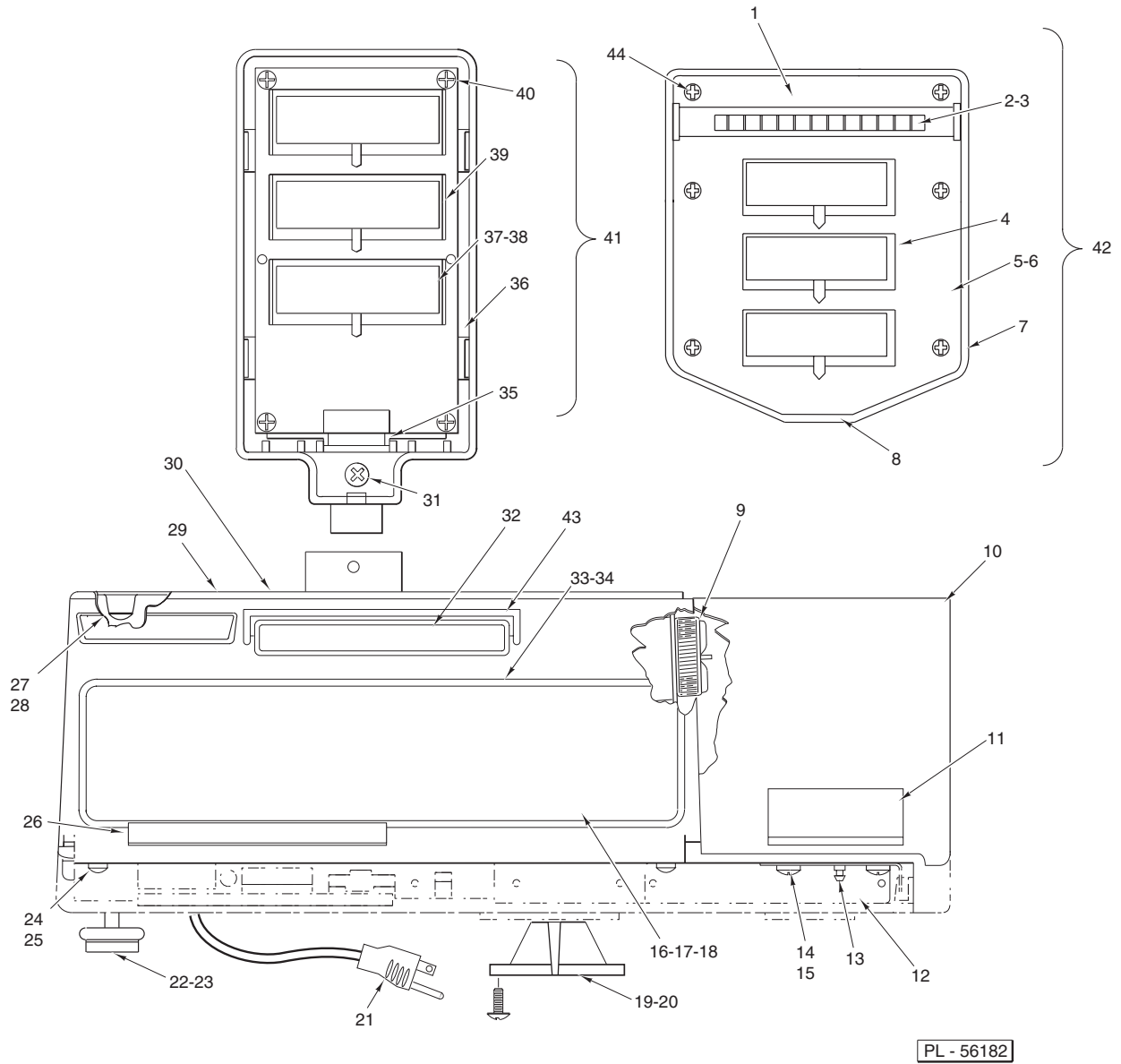
*****Use When Changing Items 37 thru 43.



PRINTER SP80/1500

PRINTER SP80/1500

ILLUS. PL-56241	PART NO.	NAME OF PART	AMT.
1	00-184462	Take-Up Shaft Assy.	1
2	00-259197	Key – Label Roll.....	1
3	00-183676	Spacer – Printer Frame	1
4	00-259192	Guide – Paper.....	1
5	SC-018-34	Mach. Screw 8-32 x 1/2 Phil. Pan Hd.	3
6	WL-003-12	Lockwasher #8 Medium.....	3
7	00-049473	Left Side Frame Assy.....	1
8	00-334793	Stepper Motor Assy. (Incls. Item 9)	1
9	00-183946	Wrapping – Spiral Band.....	1
10	00-259204	Plate – Motor Screw	1
11	00-259606	Washer	2
12	RR-007-10	Retaining Ring.....	2
13	00-042828	Bar – Head Spring	1
14	00-175518	Lever – Head Latch	1
15	SC-018-31	Mach. Screw 8-32 x 1/2 Phil. Pan Hd.	1
16	WL-003-12	Lockwasher #8 Medium.....	1
17	00-049474	Right Fram Sub-Assy.....	1
18	00-259213	Screw – Shoulder Latch.....	1
19	00-259263	Bearing	1
20	SD-015-40	Self-Tapping Screw 8-32 x 3/8 Phil. Pan Hd., Type TT	3
21	SC-018-31	Mach. Screw 8-32 x 1/2 Phil. Pan Hd.	2
22	WL-003-12	Lockwasher #8 Medium.....	2
23	00-259265	Screw – Dowel	2
24	WL-003-12	Lockwasher #8 Medium.....	2
25	00-259171	Plate – Latch.....	1
26	SD-015-40	Self-Tapping Screw 8-32 x 3/8 Phil. Pan Hd., Type TT	2
27	SC-119-17	Mach. Screw 3-48 x 3/8 Phil. Pan Hd.	2
28	WL-019-65	Lockwasher #3 Medium.....	2
29	00-259144-00001	Head Up Switch Assy.	1
30	00-048370	Cable – Print Head	1
31	00-049843	Print Head	1
32	00-259605	Heat Sink	1
33	SC-119-16	Mach. Screw M3 x 0.5 x 6 mm Phil. Pan Hd. (SST)	3
34	WL-019-58	Lockwasher Internal Shakeproof.....	3
35	00-184514	Supprt Assy. (Use with Reflector Style Media Sensor)	1
36	00-184279	Media Sensor Assy. (Reflector Style)	1
37	SC-120-27	Mach. Screw 4-40 x 7/16 Phil. Rd. Hd.	1
38	WL-003-03	Lockwasher #4 Medium.....	1
39	00-259206	Support Assy. (Use With Original Style Media Sensor)	1
40	00-259236	Bar – Peel	1
41	00-259207	Roller – Drive (Ground)	1
42	00-259201	Screw – Peel Bar	1
43	WL-003-12	Lockwasher #8 Medium.....	1
44	00-259149	Media Sensor Assy. (Original Style)	1
45	SD-015-26	Self-Tapping Screw 4-40 x 1/4 Phil. Pan Hd., Type TT	1
46	RR-006-13	Retaining Ring	1
47	00-259261	Screw – Adjustment	1
48	NS-018-39	Jam Nut 1/4-28 Hex (SST)	1
49	00-175157	Plunger	1
50	00-175167	Spring – Compression	1
51	WL-023-21	Washer (SST)	1
52	00-259211	Pivot – Spring Bar.....	1
53	00-259198	Belt – Timing	1
54	00-259632	Pulley – Drive Roller	1
55	SC-047-74	Set Screw 8-32 x 1/4 Hdls., Cup Pt.....	1
56	00-259205	Timing Pulley Assy.	1
57	SC-075-22	Set Screw 5-40 x 1/4 Hdls., Cup Pt.....	1
58	RR-010-06	Retaining Ring.....	1
59	00-183381	Belt – Take-up Drive	1
60	00-259817	Take-Up Pulley Assy.	1
61	00-046412	Nut – Special	1
62	00-334999	Bushing (Bronze).....	1
63	00-334998	Hub Assy.	1
	00-042711	Printer Assy. (Incls. Items 1 thru 8, 10 thru 24, 26, 30, 31, & 38 thru 61)	1

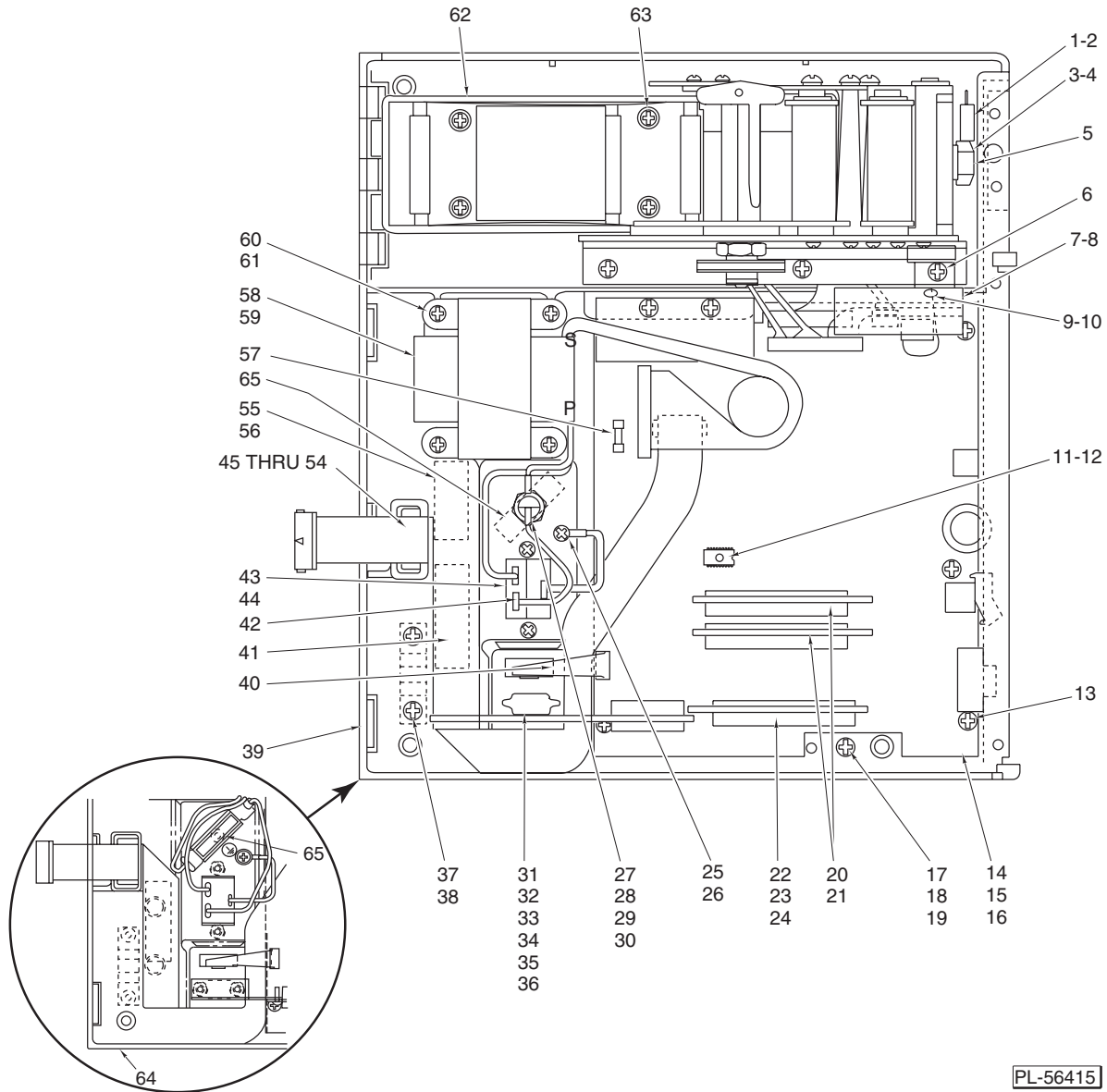


PL - 56182

PRINTER HOUSING SP2/1500

PRINTER HOUSING SP2/1500

ILLUS. PL-56182	PART NO.	NAME OF PART	AMT.
1	00-184388	Plate Assy. – Upper	1
2	00-041869	Board Assy. – Double Marquee	1
3	00-259493	Board Assy. – Single Marquee	1
4	00-184381	Screen	2
5	00-184384	Plate Assy. – Lower	1
6	SC-022-63	Mach. Screw 8-32 x 5/16 Phil. Flat Hd. (SST)	2
7	00-184380	Housing – Marquee	1
8	00-259695	Clip – Antistatic	1
9	00-183748-00001	Indicator Assy. (Speaker)	1
10	00-047051	Printer Cover Assy. (Incls. Items 11, 12, 13, & 259823)	1
11	00-044477	Tear Bar Assy.	1
12	00-044641	Plate – Cover Latch	1
13	00-044772	Stud – Printer Cover Latch	1
14	SC-018-30	Mach. Screw 8-32 x 1/4 Phil. Pan Hd.	2
15	00-259825	Washer	2
16	00-047388	Keyboard	1
17	00-259376	Labels – Blank	1
18	00-259377	Labels – Keyboard	1
19	00-259726	Ring – Clamp (For Post Mounting)	1
20	SC-037-82	Cap Screw 1/4-20 x 7/8 Hex Hd.	3
21	00-257200	Cord – Power Supply (Straight Plug)	1
22	00-259167	Foot	AR
23	NS-017-03	Jam Nut 1/4-20 Hex	AR
24	SC-120-68	Mach. Screw 8-32 x 5/16 Phil. Fil. Hd.	2
25	00-259809	Retainer – Bezel	2
26	00-259688	Retainer – Overlay	1
27	SD-015-40	Self-Tapping Screw 8-32 x 3/8 Phil. Pan Hd., Type TT	1
28	WS-028-06	Washer	1
29	00-047390-00001	Cover – Controls (Incls. Items 9, 16, 26, 27, 28, & 32)	1
30	00-117863-00003	Decal – Hobart	1
31	SC-022-07	Mach. Screw 8-32 x 1/2 Flat Hd. (SST)	2
32	00-183656	Alph Numeric Display Assy. (Back Lit)	AR
33	00-046847	Bezel Assy. (Incls. Window)	1
34	00-259540	Overlay – Supervisor	1
35	00-259824	Clip – Retaining	1
36	00-175485	Housing – Display	1
37	00-259164	Screen – Operator	1
38	00-259165	Screen – Customer	1
39	00-259145	Display Board Assy.	1
40	SD-017-06	Self-Tapping Screw 6-20 x 1/2 Phil. Bndg. Hd., Type AB	4
41	00-259991	Display Assy. (Incls Items 31 & 35 thru 40)	1
42	00-184386	Display Assy. (Incls. Items 1 thru 8 & 44)	1
43	00-042858	Shield Assy. – Ambient Light	1
44	SC-113-37	Mach. Screw 6-32 x 5/8 Phil. Fil. Hd.	6
	00-183490	Prom Kit	1
	00-259823	Label – Threading	1



PL-56415

PRINTER BASE SP2/1500

ILLUS.	PART NO.	NAME OF PART	AMT.
PL-56415			
1	SC-074-13	Mach. Screw 8-32 x 3/16 Phil. Rd. Hd.	1
2	00-175481	Spring - Latch	1
3	SD-036-48	Self-Tapping Screw 4-40 x 3/8 Phil. Pan Hd., Type TT	1
4	WL-003-03	Lockwasher #4 Medium	1
5	00-183699	Label Taken Sensor Assy. (With Plug) (Used on Machines Before 1-92)	1
6	SD-015-40	Self-Tapping Screw 8-32 x 3/8 Phil. Pan Hd., Type TT	3
7	00-183700	Board - Label Taken Sensor (Incls. Item 5)	1
8	00-259945	Bracket - Label Taken Board	1
9	SD-036-48	Self-Tapping Screw 4-40 x 3/8 Phil. Pan Hd., Type TT	1
10	WL-003-03	Lockwasher #4 Medium	1
*11	00-184361	IC-EPROM (68HC11) (Used with Original Style Media Sensor)	1
*12	00-046627	IC-EPROM (68HC11) (Used with Reflective Style Media Sensor)	1
13	SD-015-40	Self-Tapping Screw 8-32 x 3/8 Phil. Pan Hd., Type TT	4
14	00-259300-00004	Main Board Assy.	1
15	00-259170	Insulator - Mylar	1
16	00-252289	Plug - 2 Position (Jumper)	AR

PRINTER BASE SP2/1500 (Cont.)

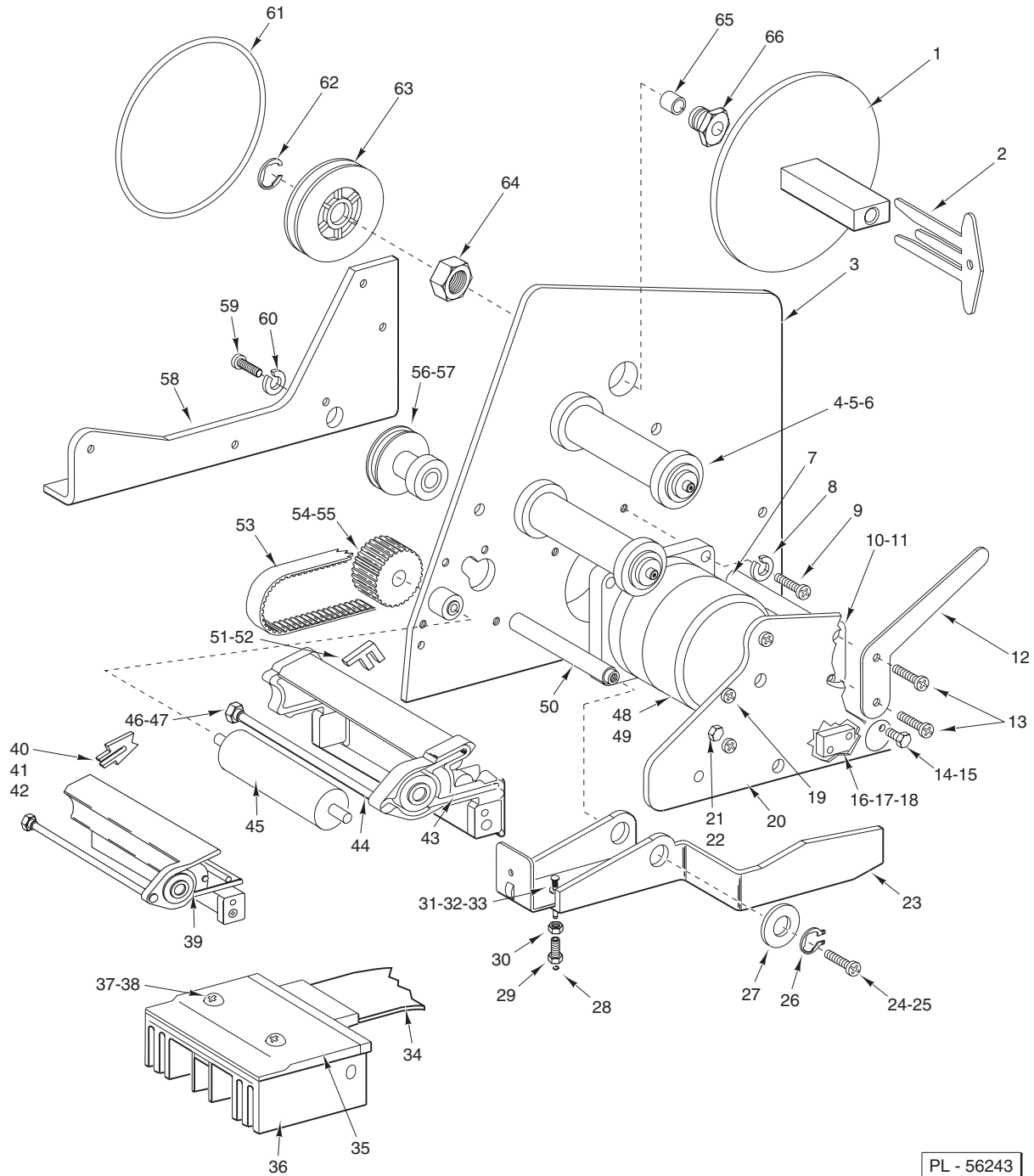
ILLUS. PL-56415	PART NO.	NAME OF PART	AMT.
17	SD-015-40	Self-Tapping Screw 8-32 x 3/8 Phil. Pan Hd., Type TT	1
18	WL-007-07	Lockwasher #8 External Shakeproof	1
19	00-065890-00081	Terminal	1
20	00-184139	RAM Board (512K)	1
21	00-184603	RAM Board (1 Meg.)	1
22	00-184636-00101	PROM Board (nonFDA)	1
**23	00-184636-00202	PROM Board (FDA1)	1
***24	00-184636-00301	PROM Board (FDA2)	1
25	SD-015-40	Self-Tapping Screw 8-32 x 3/8 Phil. Pan Hd., Type TT	1
26	WL-007-07	Lockwasher #8 External Shakeproof	1
27	00-258145	Fuse Holder & Nut (120/60/1)	1
28	00-184580	Fuse Holder & Nut (220/50/1)	1
29	FE-017-03	Fuse (2 Amp.) (120/60/1)	1
30	FE-022-29	Fuse (2 Amp.) (220/50/1)	1
****31	00-259374	Network Board	1
32	00-183913	Clockboard – RTC	1
****33	00-257128	Special Screwlock Assy. (Female)	2
34	00-184101	Bracket – Retainer	1
35	SC-113-10	Mach. Screw 4-40 x 3/8 Phil. Pan Hd.	3
36	WL-003-03	Lockwasher #4 Medium	3
37	SD-015-38	Self-Tapping Screw 6-32 x 3/8 Phil. Pan Hd., Type TT	2
38	00-259546	Plate – Strain Relief	1
39	00-259682	Base (ML-28776 & ML-28793)	1
40	00-183602-00001	Cable – Scale	1
41	00-184336	Label – Interference Warning	1
42	00-183235	Wire Assy.	1
43	SD-015-38	Self-Tapping Screw 6-32 x 3/8 Phil. Pan Hd., Type TT	2
44	00-258120	Filter – Power Input	1
45	00-183653	Insulator – Post (5.143 In.) (Use with Item 47)	1
46	00-259807	Display Post Assy. (Incls. Items 47 thru 51)	1
47	00-259798	Post – Display (5.843 In.)	1
48	00-259155	Cable – Numeric Display	1
49	00-047333	Bar – Draw Down	1
50	SC-089-04	Cap Screw 1/4-20 x 1 Soc. Hex Hd.	1
51	SC-115-35	Mach. Screw 8-32 x 1/2 Phil. Flat Hd. (SST)	2
52	00-259437	Post – Display (14 In.)	1
53	00-259484	Insulator – Post (13.330 In.) (Use with Item 52)	1
54	00-175504	Post Kit (14 In.)	1
55	00-259141	Label – Fuse (120/60/1)	1
56	00-184564	Label – Fuse (220/50/1)	1
57	FE-025-15	Fuse (5 Amp.)	1
58	00-259143	Transformer Assy. (120/60/1)	1
59	00-184547	Transformer Assy. (220/50/1)	1
60	SD-015-40	Self-Tapping Screw 8-32 x 3/8 Phil. Pan Hd., Type TT	4
61	WL-007-07	Lockwasher #8 External Shakeproof	1
62	00-259693	Holder – Paper Roll	1
63	SD-015-40	Self-Tapping Screw 8-32 x 3/8 Phil. Pan Hd., Type TT	4
64	00-047346	Base (ML-28986)	1
65	00-046576	Fuse Holder (ML-28986)	1
	00-257194	Shell – Junction	1
****	00-257195	Socket – Connector	1
****	00-257196	Screw Lock Assy.	2
****	WL-008-45	Lockwasher #4 Internal Shakeproof	2
	00-535236	Sealer	AR
	00-520228	Adhesive – Loctite 242	AR
	00-519504	Thermo Joint Compound (2 oz.)	AR
	00-512987	Adhesive – Loctite 222	AR
	00-541890	Sealer	AR
	TL-084919	Electrostatic Damage Prevention Kit	AR

*Use with SP2/1500 Printer on Page 17.

**For Use With ScaleMaster.

***For Use With Ultima and Quantum.

****Order For Use With MiniNetwork System or ScaleMaster.

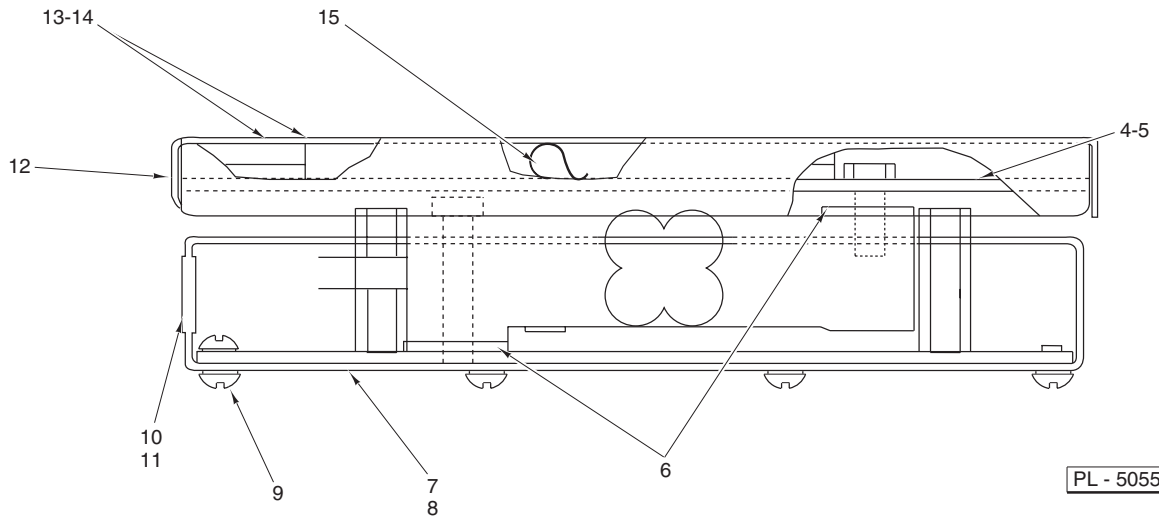
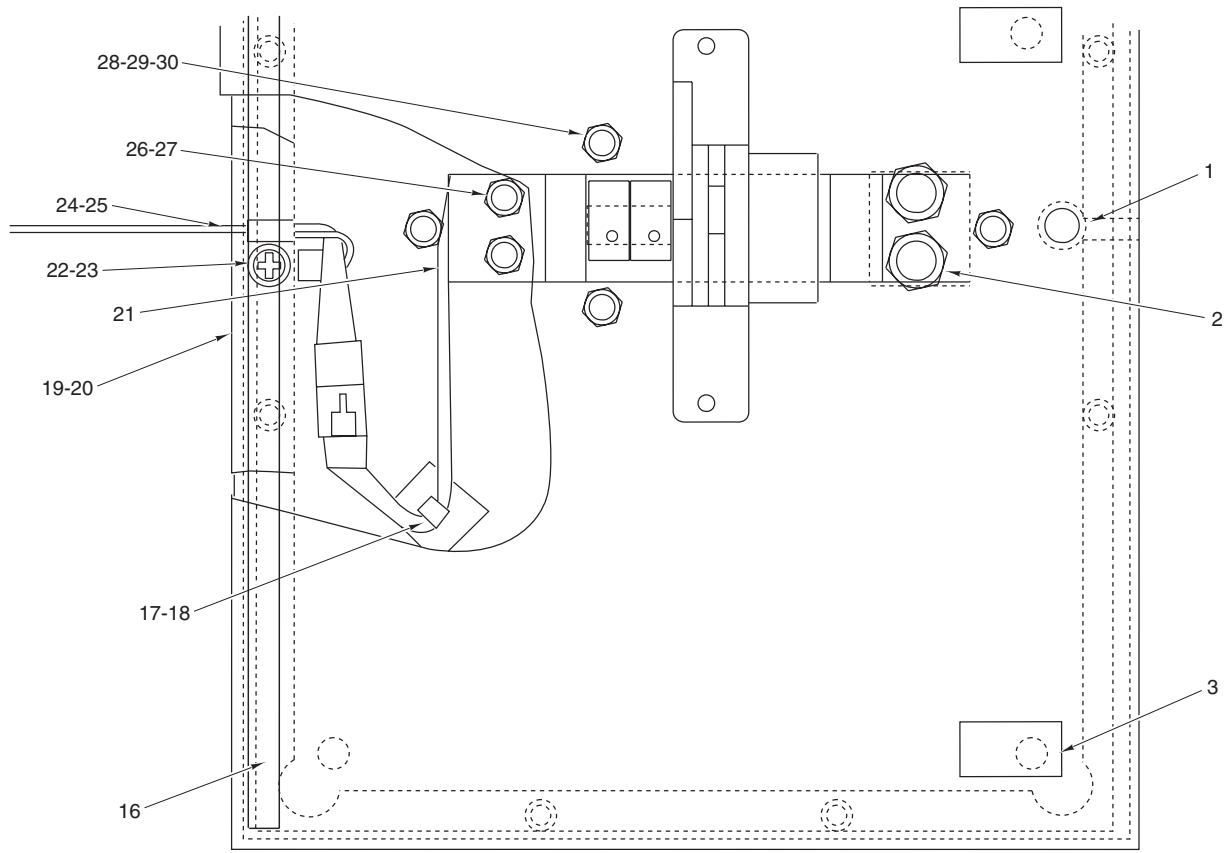


PRINTER ASSEMBLY SP2/1500

ILLUS.	PART NO.	NAME OF PART	AMT.
PL-56243			
1	00-184463	Shaft Assy. (Take-Up).....	1
2	00-259197	Key - Label Roll.....	1
3	00-184483	Frame - Left.....	1
4	00-184394	Spacer - Printer Frame.....	2
5	00-259192	Guide - Paper.....	2
6	RR-011-72	Retaining Ring.....	2
7	00-259211	Pivot - Spring Bar.....	1

PRINTER ASSEMBLY SP2/1500 (Cont.)

ILLUS. PL-56243	PART NO.	NAME OF PART	AMT.
8	WL-003-12	Lockwasher #8 Medium	3
9	SC-018-34	Mach. Screw 8-32 x 1/2 Phil. Pan Hd.	3
10	00-184393	Actuator – Head-Up Switch	1
11	00-259797	Spacer	2
12	00-259796	Lever – Print	1
13	SD-024-10	Self-Tapping Screw 6-32 x 1/2 Phil. Pan Hd., Type TT	2
14	SC-068-14	Mach. Screw 8-32 x 3/8 Hex Hd.	1
15	00-184287	Eccentric – Support	1
16	00-259144-00001	Head Up Switch Assy.	1
17	SC-119-17	Mach. Screw 3-48 x 3/8 Phil. Pan Hd.	2
18	WL-019-65	Lockwasher #3 Medium	2
19	SD-015-40	Self-Tapping Screw 8-32 x 3/8 Phil. Pan Hd., Type TT	3
20	00-183816	Frame – Right	1
21	00-259265	Screw – Dowel	2
22	WL-003-12	Lockwasher #8 Medium	2
23	00-042829	Head Spring Bar Assy.	1
24	SC-018-31	Mach. Screw 8-32 x 3/8 Phil. Pan Hd.	2
25	WL-003-12	Lockwasher #8 Medium	2
26	RR-007-10	Retaining Ring	2
27	00-259606	Washer	1
28	RR-006-13	Retaining Ring	1
29	00-259261	Screw – Adjustment	1
30	NS-018-39	Jam Nut 1/4-28 Hex (SST)	1
31	00-175157	Plunger	1
32	00-175167	Spring – Compression	1
33	WS-023-21	Washer (SST)	1
34	00-048370	Cable – Print Head	1
35	00-049843	Print Head	1
36	00-259605	Heat Sink	1
37	SC-119-16	Mach. Screw M3 x 0.5 x 6 mm Phil. Pan Hd. (SST)	2
38	WL-019-58	Lockwasher Internal Shakeproof	2
39	00-184514	Support Assy. (Use with Reflector Style Media Sensor)	1
40	00-184279	Media Sensor Assy. (Reflector Style)	1
41	SC-120-27	Mach. Screw 4-40 x 7/16 Phil. Rd. Hd.	1
42	WL-003-03	Lockwasher #4 Medium	1
43	00-259206	Support Assy. (USG with Original Style Media Sensor)	1
44	00-259236	Bar – Peel	1
45	00-259207	Roller – Drive (Ground)	1
46	00-259201	Screw – Peel Bar	1
47	WL-003-12	Lockwasher #8 Medium	1
48	00-334793	Stepper Motor Assy. (Incls. Item 48)	1
49	00-183946	Wrapping – Spiral Band	1
50	00-259211	Pivot – Spring Bar	1
51	00-259149	Media Sensor Assy. (Original Style)	1
52	SD-015-26	Self-Tapping Screw 4-40 x 1/4 Phil. Pan Hd., Type TT	1
53	00-259808	Belt – Timing (109T)	1
54	00-259632	Pulley – Drive Roller	1
55	SD-047-74	Self-Tapping Screw 8-32 x 1/4 Hdls., Cup Pt.	1
56	00-259205	Timing Pulley Assy.	1
57	SC-075-22	Set Screw 5-40 x 1/4 Hdls., Cup Pt.	1
58	00-259728	Bracket – Printer	1
59	SC-018-31	Mach. Screw 8-32 x 3/8 Phil. Pan Hd.	7
60	WL-003-12	Lockwasher #8 Medium	7
61	00-259819	Belt – Take-Up Drive	1
62	RR-010-06	Retaining Ring	1
63	00-259817	Take-Up Pulley Assy.	1
64	00-046412	Nut – Special	1
65	00-334999	Bearing (Bronze)	1
66	00-334998	Hub Assy.	1
	00-259800	Printer Assy.	1



PL - 50555

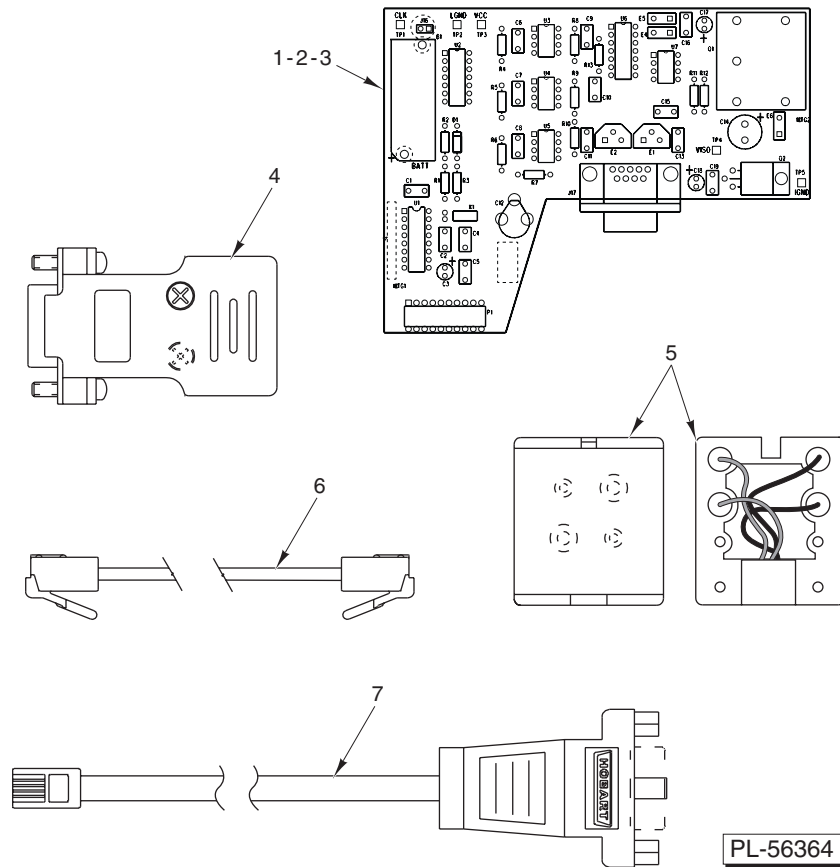
SPS & CSWS SCALES

SPS & CSWS SCALES

ILLUS.	PART NO.	NAME OF PART	AMT.
	PL-50555		
1	00-013931	Level – Spirit	1
2	SC-110-12	Cap Screw 1/4-20 x 5/8 Hex Hd.	2
3	00-259185	Pad – Platter (1 In. x 1/2 In.)	8
4	00-184173	Support Assy. – Platter (ML-28778) (CSWS) (Incls. Items 1, 3, 15, 16, & 30)	1
5	00-184172	Support Assy. – Platter (ML-28775) (SPS) (Incls. Items 1, 3, 13, 15, & 30)	1
6	00-175479	Spacer	2
7	00-183928	Base – Scale (ML-28778) (CSWS)	1
8	00-048319	Base – Scale (ML-28775) (SPS)	1
9	SD-015-39	Self-Tapping Screw 8-32 x 1/4 Phil. Pan Hd., Type TT	AR
10	00-183377	Cover Assy. – Right (ML-28778) (CSWS)	1
11	00-183360	Cover Assy. – Right (ML-28775) (SPS)	1
12	00-259979	Platter (ML-28775) (DIM. 11 5/8 In.) (SPS)	1
13	00-258958	Fastener (Coarse) (ML-28775) (SPS)	4
14	00-258959	Fastener (Fine) (ML-28775) (SPS)	1
15	00-257114	Contact – Finger	1
16	00-183947	Pad – Platter (12 1/2 In.) (ML-28778) (CSWS)	1
17	00-251199	Tie – Cable (4 In. Long)	1
18	00-255503	Mount – Cable Tie	1
19	00-183378	Cover Assy. – Left (ML-28778) (CSWS)	1
20	00-183359	Cover Assy. – Left (ML-28775) (SPS)	1
21	00-048625	Load Cell Assy. (15 kg)	1
22	00-253363	Clamp	1
23	SD-015-30	Self-Tapping Screw 10-24 x 5/16 Phil. Pan Hd., Type TT (ML-28778) (CSWS)	1
24	00-259980	Cable E – Scale 3.8 Ft. (ML-28778) (CSWS)	1
25	00-183634	Cable – Scale 7 Ft. (ML-28775) (SPS)	1
26	SC-120-70	Cap Screw 1/4-20 x 1 5/8 Soc. Hd.	2
27	WL-003-39	Lockwasher 1/4 Light	2
28	00-183923	Post – Stop	4
29	00-183947	Pad – Platter (12 1/2 In.)	1
30	SC-088-51	Set Screw 10-32 x 3/8 Hdls., Half Dog Pt.	4
	NS-017-03	Jam Nut 1/4-20 Hex (ML-28775) (SPS)	4
	00-259167	Foot (ML-28775) (SPS)	4
	00-259934	Mount – Vibration (ML-28778) (CSWS)	4
	00-257485	Platter – Large (12 In. x 16 1/2 In.)	1

PLATFORM

ILLUS.	PART NO.	NAME OF PART	AMT.
PL-50713			
1	SC-118-20	Cap Screw 1/4-20 x 1/2 Hex Hd.	4
2	SC-022-32	Mach. Screw 1/4-20 x 1/2 Flat Hd. (SST)	2
3	SC-118-20	Cap Screw 1/4-20 x 1/2 Hex Hd	2
4	WL-003-38	Lockwasher 1/4 Regular	2
5	00-178927	Tube – Roller	1
6	00-175924	Bushing	2
7	00-175925	Shaft – Platform	1
8	00-175923	Pivot – Platform Support	2
9	00-130439	Roller – Spring	6
10	00-175926	Frame – Platform	2
11	00-175928	Bracket – Platform Stop	1
12	NS-013-02	Nut 1/4-20 Hex	4
13	WL-003-38	Lockwasher 1/4 Regular	4
14	00-254206	Foot	2
15	00-183704	Platter	1
	00-183915	Platform Assy.	1



PL-56364

SCALEMASTER INTERFACE KIT

SCALEMASTER INTERFACE KIT

ILLUS.	PART NO.	NAME OF PART	AMT.
PL-56364			
1	00-259374	Board Assy. – Interface	1
2	00-257128	Screwlock – Female	2
3	WL-008-45	Lockwasher #4 Internal	2
4	00-046473	Adapter DB9/4 Pos. Telephone	1
5	00-046673	Receptacle – Telephone	1
6	00-046672-00001	Cable – Telephone 4 Pos.	1
7	00-044615	Cable – Adaptor (Scalemaster to Phone Jack)	1
	00-044633	Relief – Strain	1
	00-259614	Interface Kit (Incls. Items 1 thru 6 & 44633)	1

