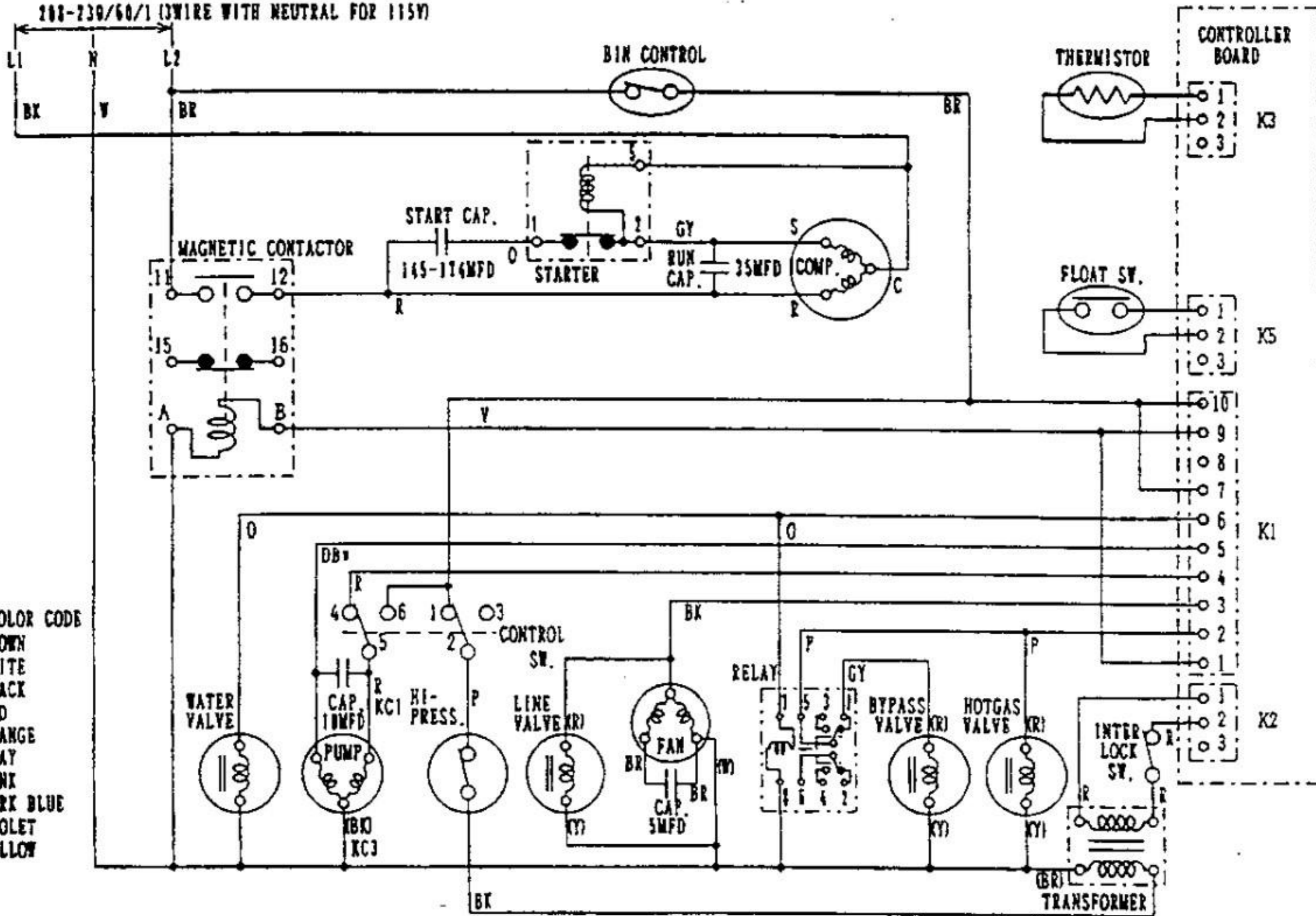


208-230/60/1 (3WIRE WITH NEUTRAL FOR 115V)



- WIRE COLOR CODE**
- BR - BROWN
 - W - WHITE
 - BX - BLACK
 - R - RED
 - O - ORANGE
 - GY - GRAY
 - P - PINK
 - DB - DARK BLUE
 - Y - VIOLET
 - T - YELLOW

CONTROLLER BOARD

THERMISTOR

FLOAT SW.

BIN CONTROL

MAGNETIC CONTACTOR

START CAP.
145-174MFD

STARTER

GY

RUN CAP.
35MFD

S

R

C

11

12

15

16

A

B

V

O

O

DB

R

4

6

1

3

5

2

CONTROL SW.

BX

RELAY

BYPASS VALVE (KY)

HOT GAS VALVE (KY)

INTER LOCK SW.

WATER VALVE

PUMP

HI-PRESS.

LINE VALVE (KY)

FAN

CAP. 5MFD

TRANSFORMER

K3

K5

K1

K2

BX

1

2

3

1

2

3

10

9

8

7

6

5

4

3

2

1

1

2

3

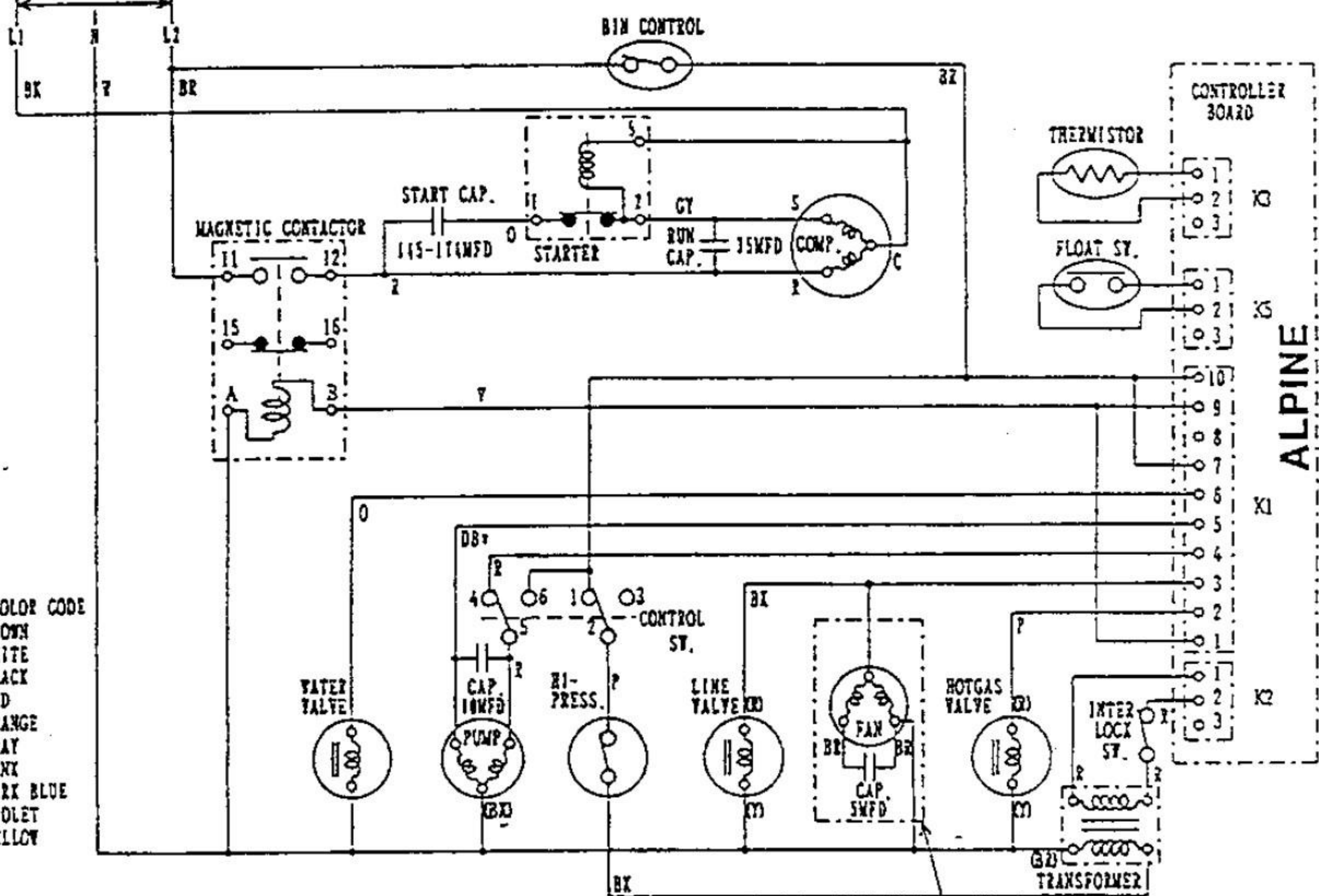
R

R

R

R

100-230/60/1 (WIRE WITH NEUTRAL FOR 115V)

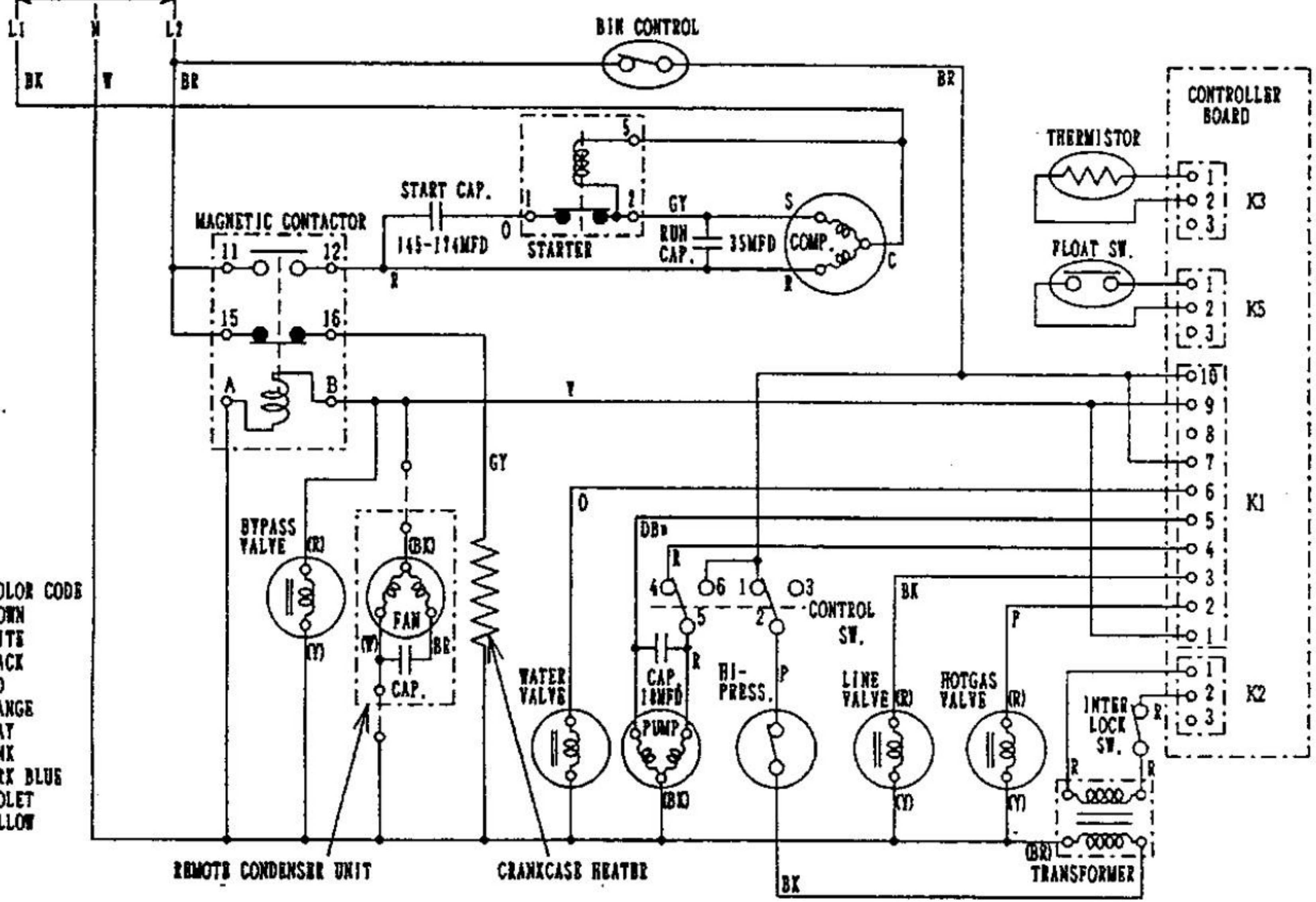


- WIRE COLOR CODE
- BR - BROWN
 - W - WHITE
 - BK - BLACK
 - R - RED
 - O - ORANGE
 - GY - GRAY
 - P - PINK
 - DB - DARK BLUE
 - V - VIOLET
 - Y - YELLOW

ALPINE

ONLY AIR COOLED MODEL

208-230/60/1 (WIRE WITH NEUTRAL FOR 115V)



- WIRE COLOR CODE**
- BR - BROWN
 - W - WHITE
 - BK - BLACK
 - R - RED
 - O - ORANGE
 - GY - GRAY
 - P - PINK
 - DB - DARK BLUE
 - V - VIOLET
 - Y - YELLOW

REMOTE CONDENSER UNIT

CRANKCASE HEATER

TRANSFORMER

CONTROLLER BOARD