



**IMPORTANT NOTE:**

Locate the Specification Label on unit to determine exact Model Name and electrical specifications. This information is needed to identify the correct replacement parts. See exploded view illustration(s) for Specification Label location.

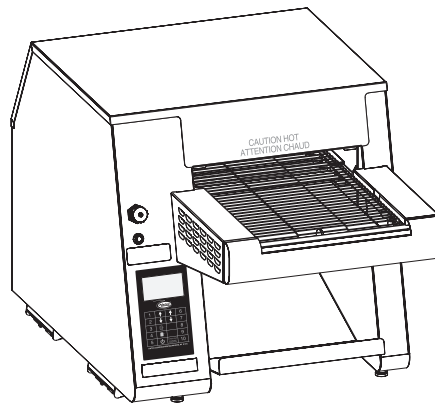
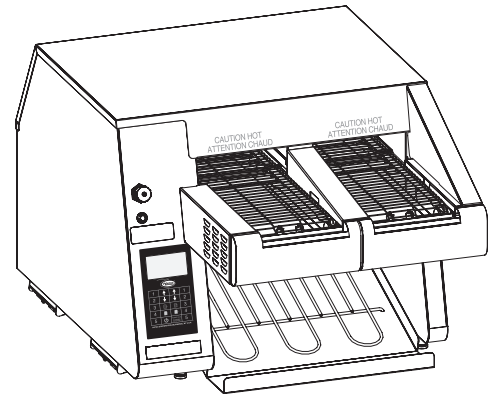
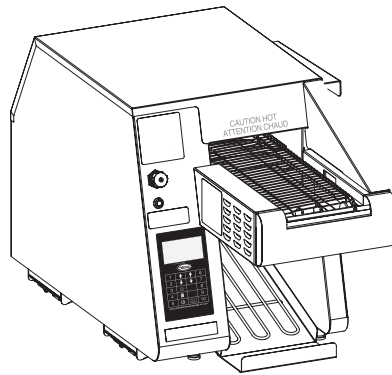


Use of replacement parts other than those supplied by Hatco Corporation may result in damage to unit or injury to personnel and will void all warranties.

# Intelligent Toast-Qwik® Conveyor Toaster

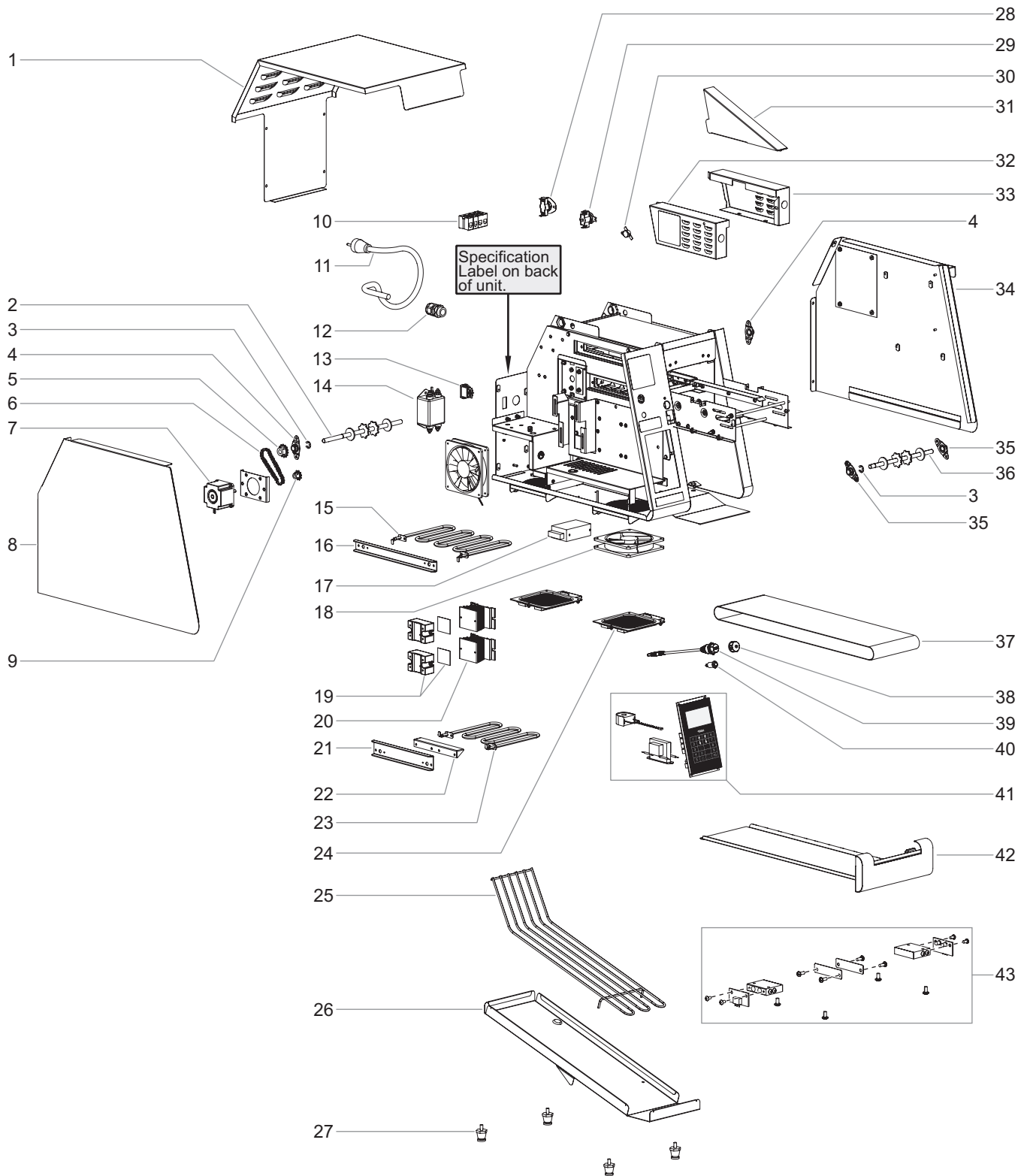
## ITQ Series

<u>Model Name</u>	<u>Page</u>
ITQ-875-1C.....	2
ITQ-1000-1C.....	4
ITQ-1750-2C.....	6



# Replacement Parts List

Model ITQ-875-1C



## Parts For Model ITQ-875-1C

Item	Description	Part Number	Qty.
1	Top Cover	04.56.282.00	1
2	Drive Shaft Assembly	04.56.293.00	1
3	E-Ring	05.11.035.00	2
4	Bearing Assembly, Rear	04.05.286.00	2
5	Driven Sprocket	05.09.062.00	1
6	Drive Chain	05.03.075.00	1
7	Stepper Motor, Conveyor	02.12.121.00	1
8	Side Cover, Left	04.05.988.00	1
9	Drive Sprocket	05.09.061.00	1
10	Terminal Block	R02.15.047.00	1
11	Power Cord w/Plug		
	NEMA 6-20P (standard)	02.18.111.00	1
	NEMA L6-20P (optional)	02.18.186.00	1
	BS-1363	02.18.068.00	1
	CEE 7/7 Schuko	02.18.038.00	1
	AS-3113	02.18.105.00	1
12	Cord Grip	R02.20.259.00	1
13	Power Switch, Rocker	02.19.161.00	1
14	EMI Filter	02.13.359.00	1
15	Heating Element, Upper, 1650 W		
	208 V	02.05.960.00	1
	240 V	02.05.987.00	1
	230 V	02.05.1053.00	1
16	Bracket, Top Element	04.05.975.00	1
17	Power Supply	02.17.064.00	1
18	Fan, Cooling	02.12.163.00	2
19	Solid State Relay Kit (includes thermal pad)	R02.01.355.00	2
20	Heat Sink, Relay	04.09.872.00	2
21	Bracket, Bottom Element	04.05.897.00	1
22	Belt Support, Element Bracket	04.05.874.00	1
23	Heating Element, Lower, 1050 W		
	208 V	02.05.961.00	1
	240 V	02.05.988.00	1
	230 V	02.05.963.00	1

Item	Description	Part Number	Qty.
24	Filter, Wire Mesh	R02.12.138.00	2
25	Toast Chute Slide	04.56.284.00	1
26	Toast Chute	04.56.283.00	1
27	Leg, 1"	R05.30.081.00	4
28	High Limit Thermostat, Mechanical, 250°F	R02.16.118.00	1
29	High Limit T-Stat, Manual	02.16.195.00	1
30	High Limit Thermostat, Mechanical, 275°F	02.16.192.00	1
31	Heat Shield	04.56.199.00	1
32	Side Cover, Conveyor, Left	04.56.122.00	1
33	Side Cover, Conveyor, Right	04.56.123.00	1
34	Side Cover, Right	04.56.560.00	1
35	Bearing Assembly, Front	04.05.387.00	2
36	Shaft Assembly, Front	04.56.302.00	1
37	Conveyor Belt	05.03.073.00	1
38	Waterproof Cap, USB	02.18.513.00	1
39	USB Cable	02.18.478.00	1
40	Indicator Light, Red	02.19.151.00	1
41	Electronic Touchpad Control Kit *	R02.01.385A.00	1
42	Crumb Tray	R04.56.285.00	1
43	Product Sensor Kit	R02.01.368.00	1
	Wiring Diagram		
	120 V	10-01-1259	
	230 V	10-01-1379	

\* Electronic Touchpad Control Kit contains electronic control, current sensor, 24 V transformer, and a USB flash drive. Failure of any one of these components requires replacement of all three.

NOTE: All electrical components on Model ITQ-875-1C are designed to operate on supply voltages between 208 V and 240 V.

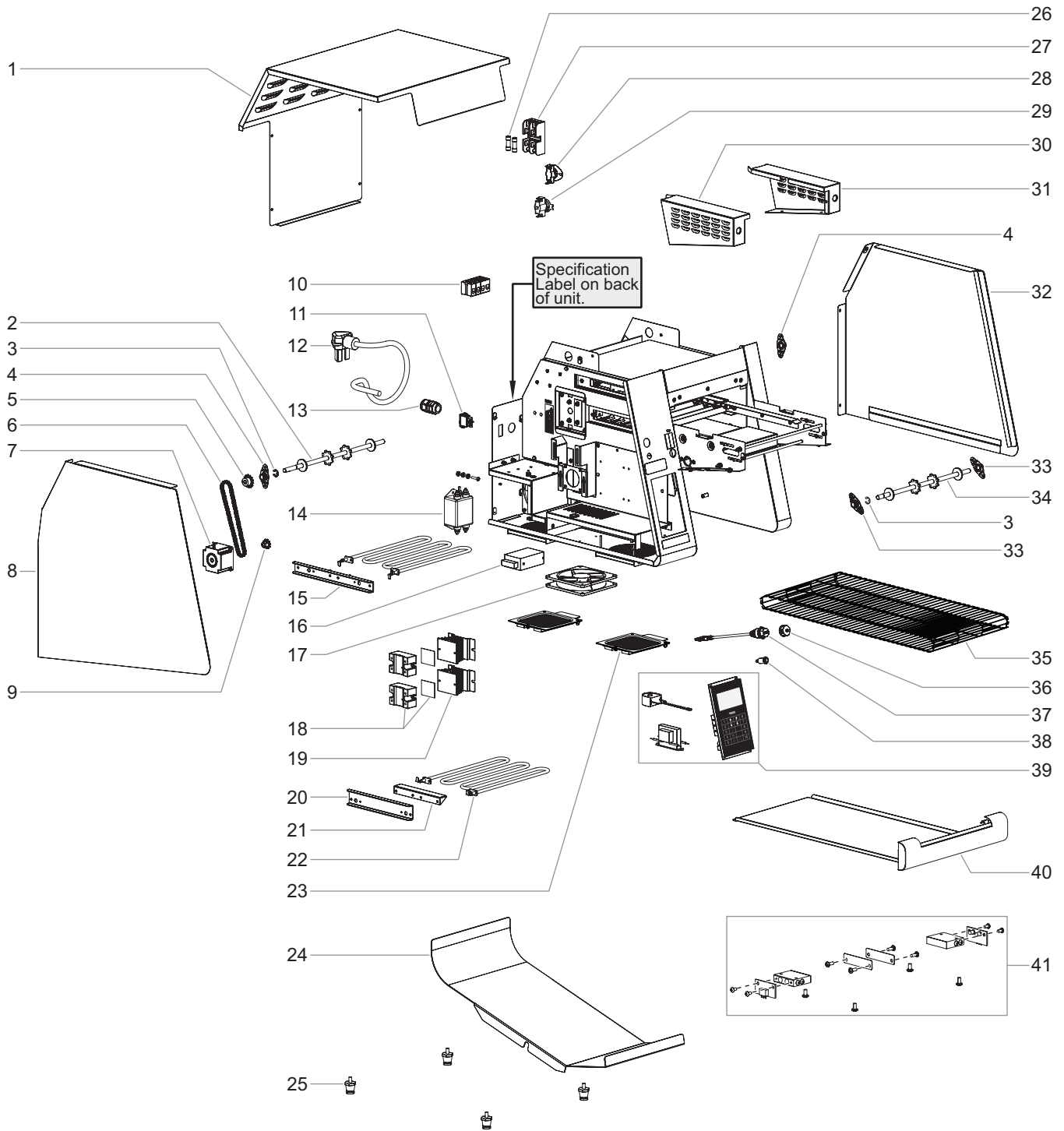
The shaded areas contain electrical information for **International models only**.

NOTE: The last four digits in a ten digit numerical serial number are the manufacturing date code.

Example: Serial number 962506**1931** has a date code of "1931" which indicates the following: 1931

└─ Week Thirty-One  
└─ Year 2019

Model **ITQ-1000-1C**



## Parts For Model ITQ-1000-1C

Item	Description	Part Number	Qty.
1	Top Cover	04.05.920.00	1
2	Drive Shaft Assembly	04.05.932.00	1
3	E-Ring	05.11.035.00	2
4	Bearing Assembly, Rear	04.05.286.00	2
5	Driven Sprocket	05.09.062.00	1
6	Drive Chain	05.03.070.00	1
7	Stepper Motor, Conveyor	02.12.121.00	1
8	Side Cover, Left	04.05.958.00	1
9	Drive Sprocket	05.09.061.00	1
10	Terminal Block	R02.15.047.00	1
11	Power Switch, Rocker	02.19.161.00	1
12	Power Cord w/Plug		
	NEMA 6-30P (standard)	02.18.122.00	1
	NEMA L6-30P (optional)	02.18.150.00	1
	CEE 7/7 Schuko	02.18.038.00	1
	No Plug	02.18.103.00	1
13	Cord Grip	R02.20.259.00	1
14	EMI Filter	02.13.359.00	1
15	Bracket, Top Element	04.05.940.00	1
16	Power Supply	02.17.064.00	1
17	Fan, Cooling	02.12.125.00	2
18	Solid State Relay Kit (includes thermal pad)	R02.01.355.00	2
19	Heat Sink, Relay	04.09.872.00	2
20	Bracket, Bottom Element	04.05.897.00	1
21	Belt Support, Element Bracket	04.05.874.00	1
22	Heating Element		
	208–240 V, 2150 W	02.05.886.00	2
	230 V, 1800 W	02.05.953.00	2

Item	Description	Part Number	Qty.
23	Filter, Wire Mesh	R02.12.138.00	2
24	Toast Chute	04.05.921.00	1
25	Leg, 1"	R05.30.081.00	4
26	Fuse, 250 V, 15 A (includes 2)	R02.03.052.02	1
27	Fuse Block	02.03.022.00	1
28	High Limit Thermostat	R02.16.118.00	1
29	High Limit T-Stat, Manual	02.16.195.00	1
30	Side Cover, Conveyor, Left	04.05.828.00	1
31	Side Cover, Conveyor, Right	04.05.829.00	1
32	Side Cover, Right	04.05.959.00	1
33	Bearing Assembly, Front	04.05.387.00	2
34	Shaft Assembly, Front	04.05.933.00	1
35	Conveyor Belt	05.03.069.00	1
36	Waterproof Cap, USB	02.18.513.00	1
37	USB Cable	02.18.478.00	1
38	Indicator Light, Red	02.19.151.00	1
39	Electronic Touchpad Control Kit *	R02.01.385A.00	1
40	Crumb Tray	R04.56.006.00	1
41	Product Sensor Kit	R02.01.368.00	1
42	Filter Retrofit Kit (not shown) †	R04.56.145.00	1
	Wiring Diagram		
	120 V	10-01-1069	
	230 V	10-01-1246	

\* Electronic Touchpad Control Kit contains electronic control, current sensor, 24 V transformer, and a USB flash drive. Failure of any one of these components requires replacement of all three.

† Filter Retrofit Kit can be ordered for units with date code **1343** and older to replace old-style foam filters with current wire mesh filters.

**NOTE:** All electrical components on Model **ITQ-1000-1C** are designed to operate on supply voltages between 208 V and 240 V.

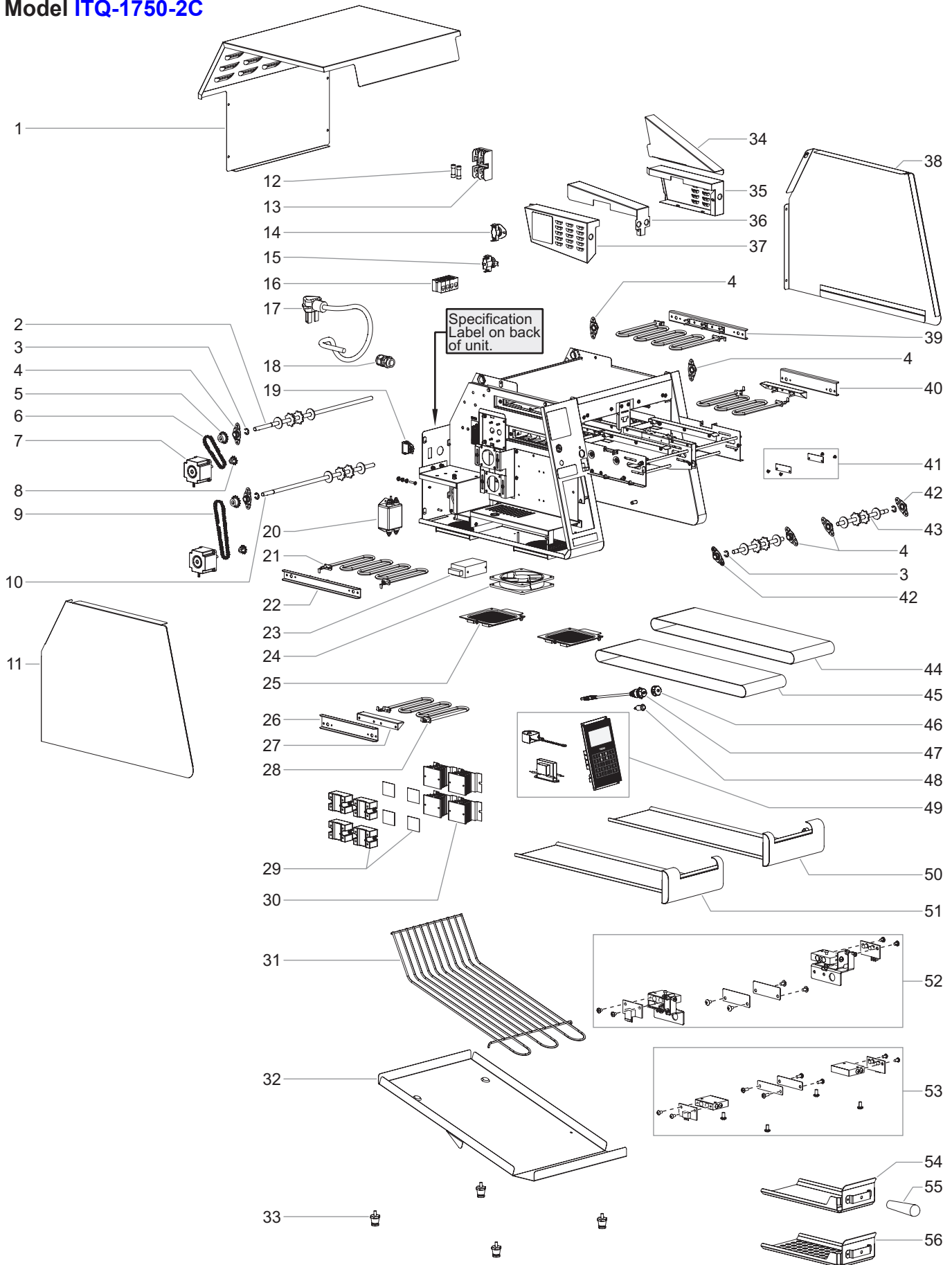
The shaded areas contain electrical information for **International models only**.

**NOTE:** The last four digits in a ten digit numerical serial number are the manufacturing date code.

Example: Serial number 962506**1931** has a date code of "1931" which indicates the following: 1931

└─ Week Thirty-One  
└─ Year 2019

Model ITQ-1750-2C



**Parts For Model ITQ-1750-2C**

Item	Description	Part Number	Qty.
1	Top Cover	04.56.098.00	1
2	Drive Shaft Assembly, Left	04.56.116.00	1
3	E-Ring	05.11.035.00	4
4	Bearing Assembly	04.05.286.00	6
5	Driven Sprocket	05.09.062.00	2
6	Drive Chain, 8.5"	05.03.075.00	1
7	Stepper Motor, Conveyor	02.12.121.00	2
8	Drive Sprocket	05.09.061.00	2
9	Drive Chain, 13"	05.03.074.00	1
10	Drive Shaft Assembly, Right	04.56.117.00	1
11	Side Cover, Left	04.05.988.00	1
12	Fuse, 250 V, 15 A (includes 2)	R02.03.052.02	2
13	Fuse Block	02.03.022.00	1
14	High Limit T-Stat	R02.16.118.00	1
15	High Limit T-Stat, Manual	02.16.195.00	1
16	Terminal Block	R02.15.047.00	1
17	Power Cord w/Plug		
	NEMA 6-30P (standard)	02.18.122.00	1
	NEMA L6-30P (optional)	02.18.150.00	1
	No Plug	02.18.103.00	1
	IEC 309	02.18.852.00	1
18	Cord Grip	R02.20.259.00	1
19	Power Switch, Rocker	02.19.161.00	1
20	EMI Filter	02.13.359.00	1
21	Heating Element, Upper, 1500 W		
	208 V	02.05.996.00	2
	240 V	02.05.997.00	2
	230 V	02.05.955.00	2
22	Bracket, Top Element	04.56.975.00	1
23	Power Supply	02.17.064.00	1
24	Fan, Cooling	02.12.125.00	2
25	Filter, Wire Mesh	R02.12.138.00	2
26	Bracket, Bottom Element	04.05.897.00	1
27	Belt Support, Element Bracket	04.05.874.00	2
28	Heating Element, Lower, 980 W		
	208 V	02.05.998.00	2
	240 V	02.05.999.00	2
	230 V	02.05.956.00	2

Item	Description	Part Number	Qty.
29	Solid State Relay Kit (includes thermal pad)	R02.01.355.00	4
30	Heat Sink, Relay	04.09.872.00	4
31	Toast Chute Slide	04.56.228.00	1
32	Toast Chute	04.56.229.00	1
33	Leg, 1"	R05.30.081.00	4
34	Heat Shield	04.56.199.00	1
35	Side Cover, Conveyor, Right	04.56.123.00	1
36	Center Cover, Conveyor	04.56.106.00	1
37	Side Cover, Conveyor, Left	04.56.122.00	1
38	Side Cover, Right	04.56.127.00	1
39	Bracket, Top Element, w/Standoff	04.56.553.00	1
40	Bracket, Bottom Element, w/ Standoff	04.56.552.00	1
41	Reflector Assembly ▲ ‡	R04.56.721.00	2
42	Bearing Assembly w/Nut, Front	04.05.387.00	2
43	Shaft Assembly, Front	04.56.115.00	2
44	Conveyor Belt, Right, 45-1-1/2"	05.03.072.00	1
45	Conveyor Belt, Left, 48"	05.03.073.00	1
46	Waterproof Cap, USB	02.18.513.00	1
47	USB Cable	02.18.478.00	1
48	Indicator Light, Red	02.19.151.00	1
49	Electronic Touchpad Control Kit *	R02.01.385B.00	1
50	Crumb Tray, Right	R04.56.100.00	1
51	Crumb Tray, Left	R04.56.099.00	1
52	Product Sensor/Reflector Kit— <b>Date Code 1716 and newer</b>	R00.02.0112.00	1
53	Product Sensor/Reflector Kit— <b>Date Code 1715 and older</b>	R02.01.368.00	1
54	Food Paddle, Standard	R04.56.182.00	1
55	Handle, Food Paddle	05.30.182.00	1
56	Food Paddle, Perforated	R04.56.183.00	1
57	Filter Retrofit Kit (not shown) †	R04.56.145.00	1
	Wiring Diagram		
	120 V	10-01-1102	
	230 V	10-01-1245	

▲ For units with date code **1715** and older, use Reflector Assembly P/N [R04.56.218.00](#).

‡ Included with Product Sensor/Reflector Kit.

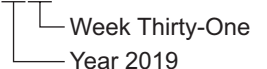
\* Electronic Touchpad Control Kit contains electronic control, current sensor, 24 V transformer, and a USB flash drive. Failure of any one of these components requires replacement of all three.

† Filter Retrofit Kit can be ordered for units with date code 1343 and older to replace old-style foam filters with current wire mesh filters.

The shaded areas contain electrical information for **International models only**.

*NOTE: The last four digits in a ten digit numerical serial number are the manufacturing date code.*

*Example: Serial number 962506**1931** has a date code of "1931" which indicates the following:*



# AUTHORIZED PARTS DISTRIBUTORS • DISTRIBUTEURS DE PIÈCES AUTORISÉS

## ALABAMA

Jones McLeod Appl. Svc.  
Birmingham 205-251-0159

## ARIZONA

Tech 24  
Phoenix 602-234-2443

Byassee Equipment Co.  
Phoenix 602-252-0402

## CALIFORNIA

Industrial Electric  
Commercial Parts & Service, Inc.  
Huntington Beach 714-379-7100

Chapman Appl. Service  
San Diego 619-298-7106

P & D Appliance  
Commercial Parts & Service, Inc.  
S. San Francisco 650-635-1900

## COLORADO

Hawkins Commercial Appliance  
Englewood 303-781-5548

## FLORIDA

Whaley Foodservice Repair  
Jacksonville 904-725-7800

Whaley Foodservice Repair  
Orlando 407-757-0851

B.G.S.I./Heritage  
Pompano Beach 954-971-0456

Comm. Appliance Service  
Tampa 813-663-0313

## GEORGIA

Heritage Service Group  
Norcross 866-388-9837

## HAWAII

Burney's Comm. Service, Inc.  
Honolulu 808-848-1466

Food Equip Parts & Service  
Honolulu 808-847-4871

## ILLINOIS

Parts Town  
Addison 708-865-7278

Eichenauer Elec. Service  
Decatur 217-429-4229

Midwest Elec. Appl. Service  
Elmhurst 630-279-8000

Cone's Repair Service  
Moline 309-797-5323

## IOWA

Goodwin Tucker Group  
Des Moines 515-262-9308

## KENTUCKY

Tech 24  
Lexington 859-254-8854

Tech 24  
Louisville 502-451-5411

## LOUISIANA

Chandlers Parts & Service  
Baton Rouge 225-272-6620

## MARYLAND

Electric Motor Service  
Baltimore 410-467-8080

## MASSACHUSETTS

Ace Service Co., Inc.  
Needham 781-449-4220

## MICHIGAN

Bildons Appliance Service  
Detroit 248-478-3320

Commercial Kitchen Service  
Bay City 989-893-4561

Midwest Food Equip. Service  
Grandville 616-261-2000

## MISSOURI

General Parts  
Kansas City 816-421-5400

Commercial Kitchen Services  
St. Louis 314-890-0700

Kaemmerlen Parts & Service  
St. Louis 314-535-2222

## NEBRASKA

Anderson Electric  
Omaha 402-341-1414

## NEVADA

Burney's Commercial  
Las Vegas 702-736-0006

Hi. Tech Commercial Service  
N. Las Vegas 702-649-4616

## NEW JERSEY

Jay Hill Repair  
Fairfield 973-575-9145

Service Plus  
Flanders 973-691-6300

## NEW YORK

Alpro Service Co.  
Maspeth 718-386-2515

Duffy's - AIS  
Buffalo 716-884-7425

3Wire  
Plattsburgh 800-634-5005

Duffy's - AIS  
Sauquoit 800-836-1014

J.B. Brady, Inc.  
Syracuse 315-422-9271

## NORTH CAROLINA

Authorized Appliance  
Charlotte 704-377-4501

## OHIO

Akron/Canton Comm. Svc. Inc.  
Akron 330-753-6634

Tech 24  
Cincinnati 513-772-6600

Commercial Parts and Service  
Columbus 614-221-0057

Electrical Appl. Repair Service  
Brooklyn Heights 216-459-8700

E. A. Wichman Co.  
Toledo 419-385-9121

## OKLAHOMA

Hagar Rest. Service, Inc.  
Oklahoma City 405-235-2184

## OREGON

General Parts Group  
Portland 503-624-0890

## PENNSYLVANIA

Elmer Schultz Services  
Philadelphia 215-627-5401

FAST Comm. Appl. Service  
Philadelphia 215-288-4800

AIS Commercial Parts and Service  
Pittsburgh 412-809-0244

K & D Service Co.  
Harrisburg 717-236-9039

Electric Repair Co.  
Reading 610-376-5444

## RHODE ISLAND

Marshall Electric Co.  
Providence 401-331-1163

## SOUTH CAROLINA

Whaley Foodservice Repair  
Lexington 803-996-9900

## TENNESSEE

Camp Electric  
Memphis 901-527-7543

## TEXAS

Armstrong Repair Service  
Houston 713-666-7100

Cooking Equipment Specialist  
Mesquite 972-686-6666

Commercial Kitchen Repair Co.  
San Antonio 210-735-2811

## UTAH

La Monica's Rest. Equip. Service  
Murray 801-263-3221

## VIRGINIA

Daubers  
Norfolk 757-855-4097

Daubers  
Springfield 703-866-3600

## WASHINGTON

3Wire  
Seattle 800-207-3146

## WISCONSIN

A.S.C., Inc.  
Madison 608-246-3160

A.S.C., Inc.  
Milwaukee 414-543-6460

## CANADA

### ALBERTA

Key Food Equipment Service  
Edmonton 780-438-1690

### BRITISH COLUMBIA

Key Food Equipment Service  
Vancouver 604-433-4484

Key Food Equipment Service  
Victoria 250-920-4888

### MANITOBA

Air Rite, Inc.  
Winnipeg 204-895-2300

### NEW BRUNSWICK

EMR Services, Ltd.  
Moncton 506-855-4228

### ONTARIO

R.G. Henderson Ltd.  
Toronto 416-422-5580

Choquette - CKS, Inc.  
Ottawa 613-739-8458

### QUÉBEC

Choquette - CKS, Inc.  
Montreal 514-722-2000

Choquette - CKS, Inc.  
Québec City 418-681-3944

## UNITED KINGDOM

Marren Group  
Northants +44(0)1933 665313

**HATCO CORPORATION**  
P.O. Box 340500  
Milwaukee, WI 53234-0500 U.S.A.  
414-671-6350  
partsandservice@hatcocorp.com  
www.hatcocorp.com



24 Hour 7 Day Parts and Service  
Assistance available in the United States  
and Canada by calling 414-671-6350.