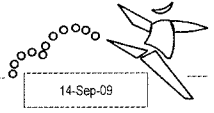
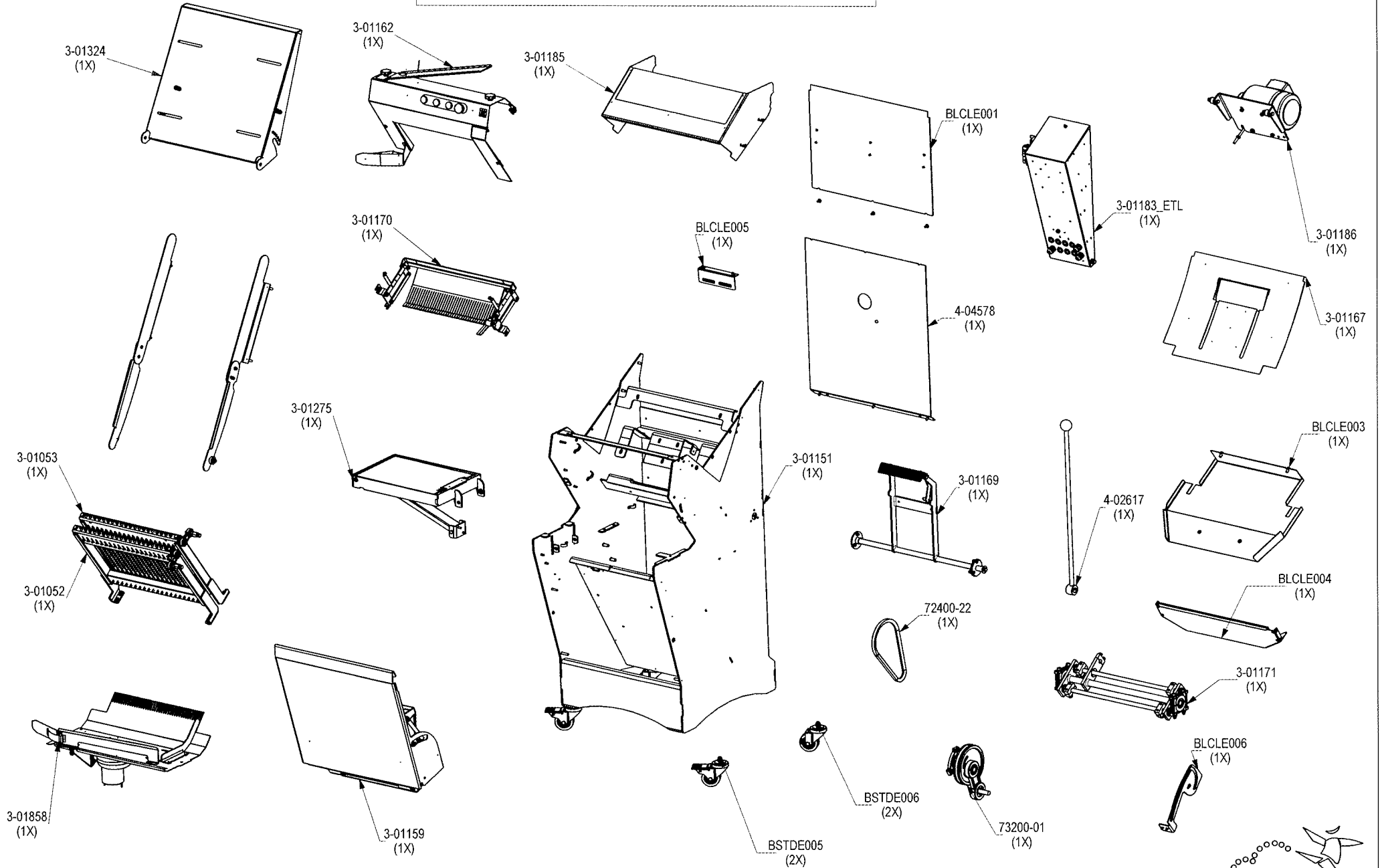


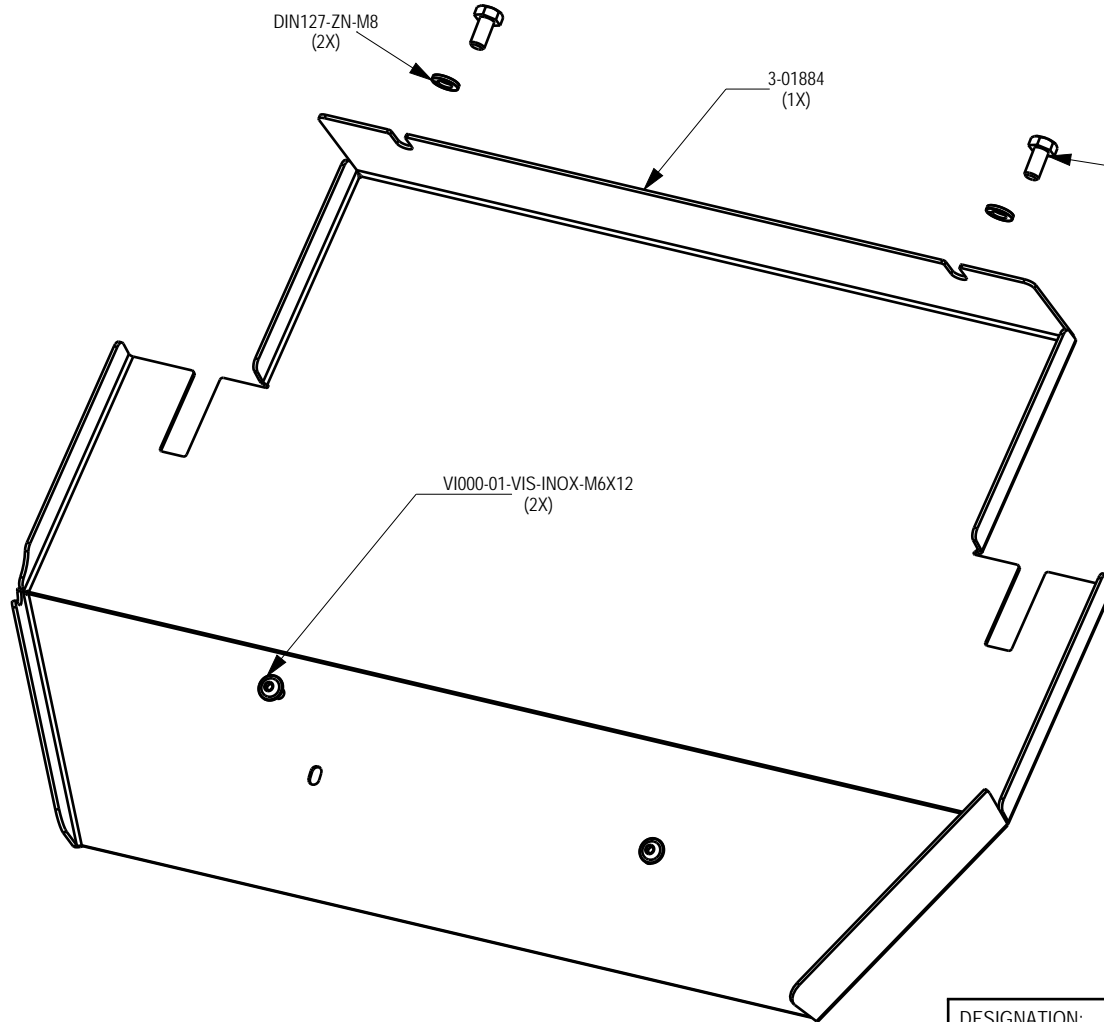
LCL_ETL

LCL 03 ETL


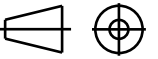
Machine assemblée



14-Sep-09



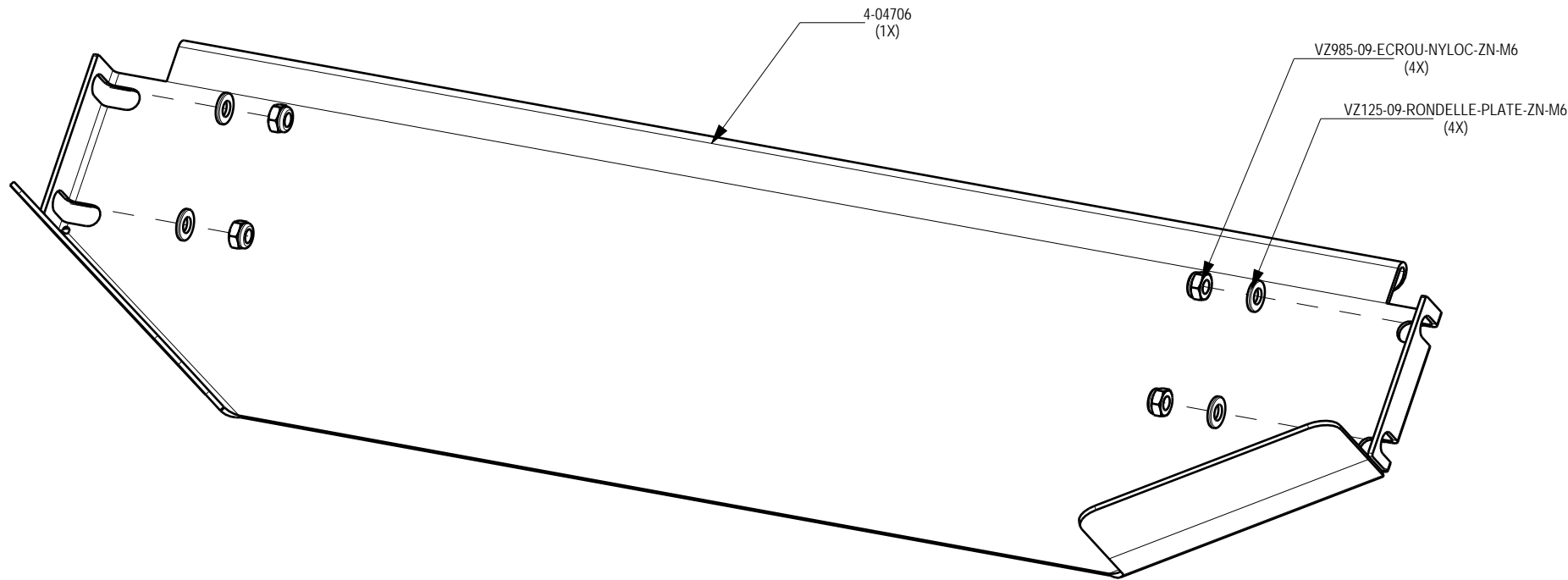
IND.	DATE	MODIF.	PAR	VERIF.
A	04/10/11	Nomenclature	LT	JPL

DESIGNATION: Rabat mies central assemblé			N° PLAN: BLCLE003 - A	
ECHELLE: 17/200	QUANTITE: 1pc / mach	MATIERE:	POIDS: kg	FINITION:
A4	BELGIUM JAC SA DIV LIEGE Verte Voie 49-51 B-4000 Sclessin Tel 32 4 234.98.70 Fax 32 4 234.98.97 BE 403 958 973	Ce document est la propriété exclusive de JAC SA, il ne peut en aucun cas être copié ou communiqué à un tiers, et pour aucune raison que ce soit, sans l'autorisation expresse de JAC SA	 www.jac-machines.com	
VERIFIE PAR:	DESSINE PAR: ALC	DATE: 21-Dec-10	TOLERANCE GEN: 0,2	PAGE : 1/1

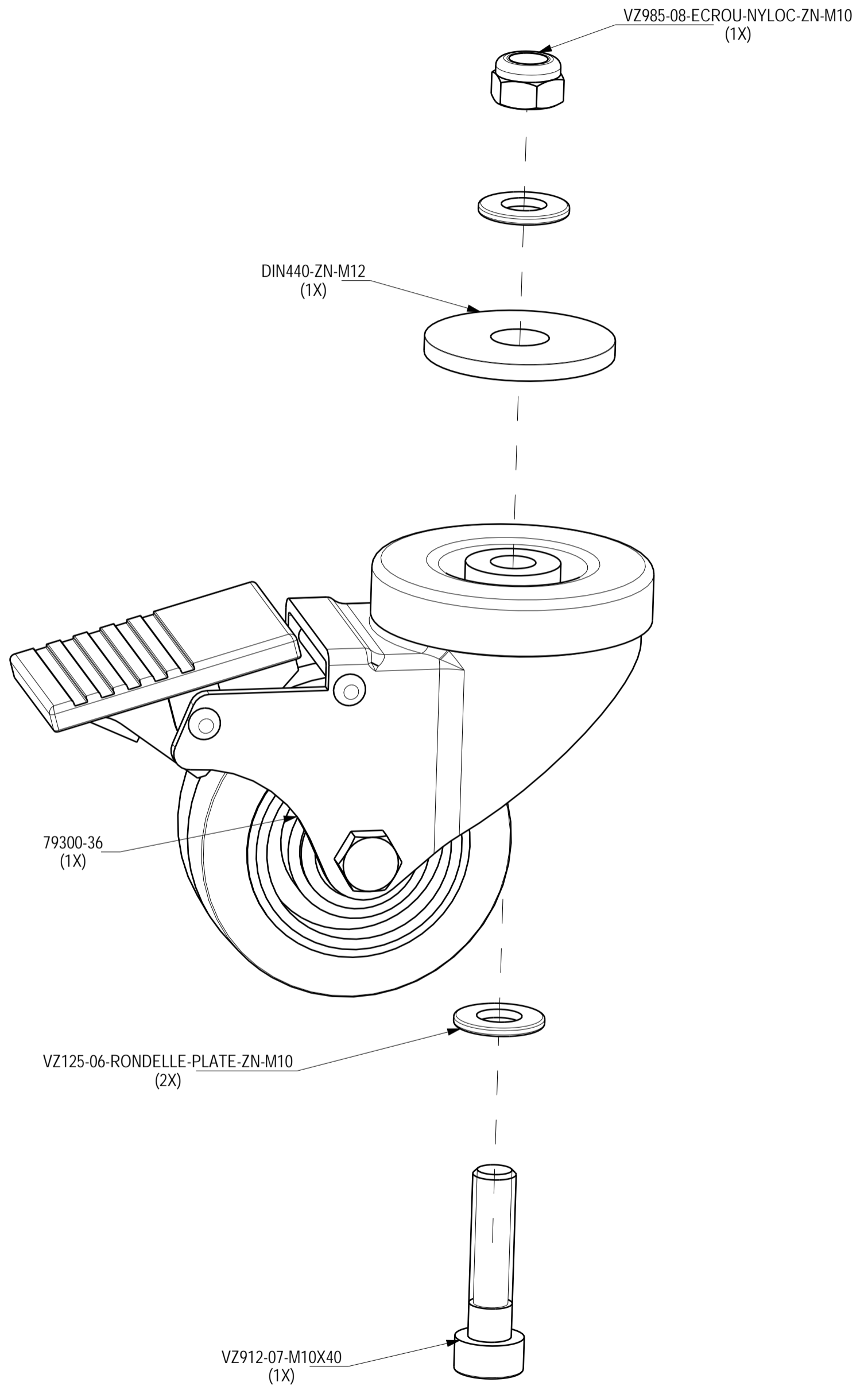
BLCLE004

LCL03

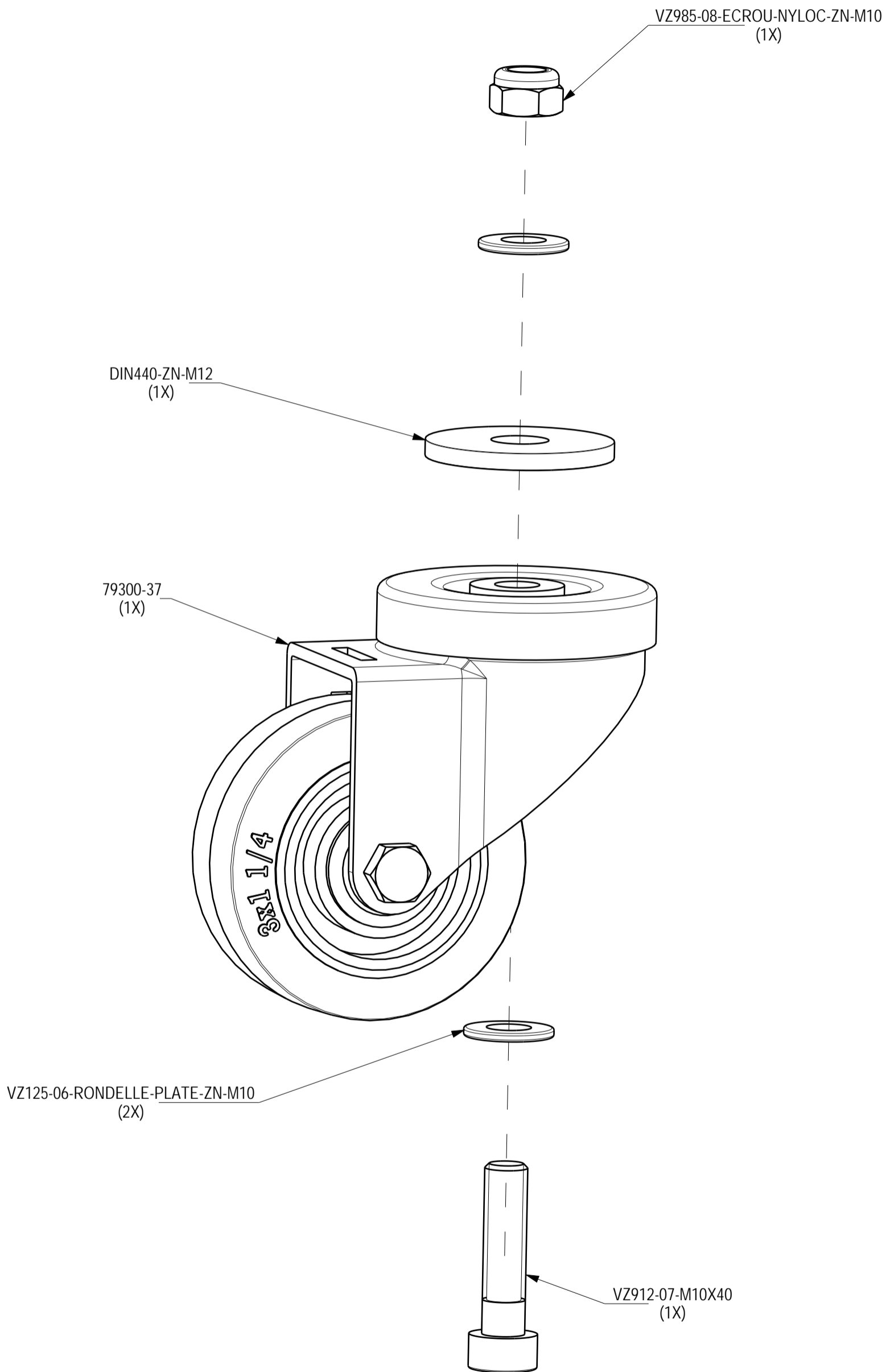
Rabat mies avant assemblé

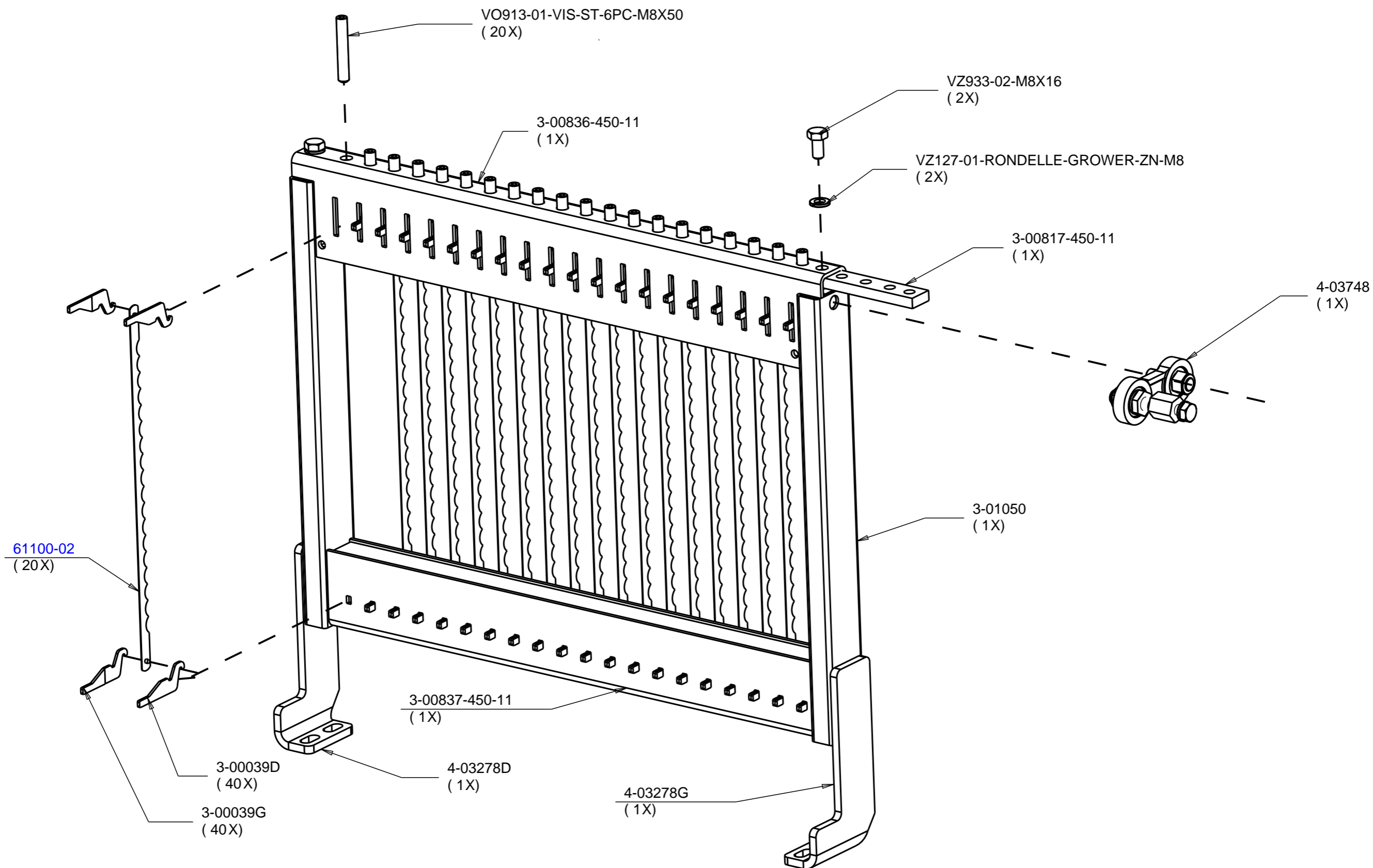


Roue directionnelle freinée assemblée




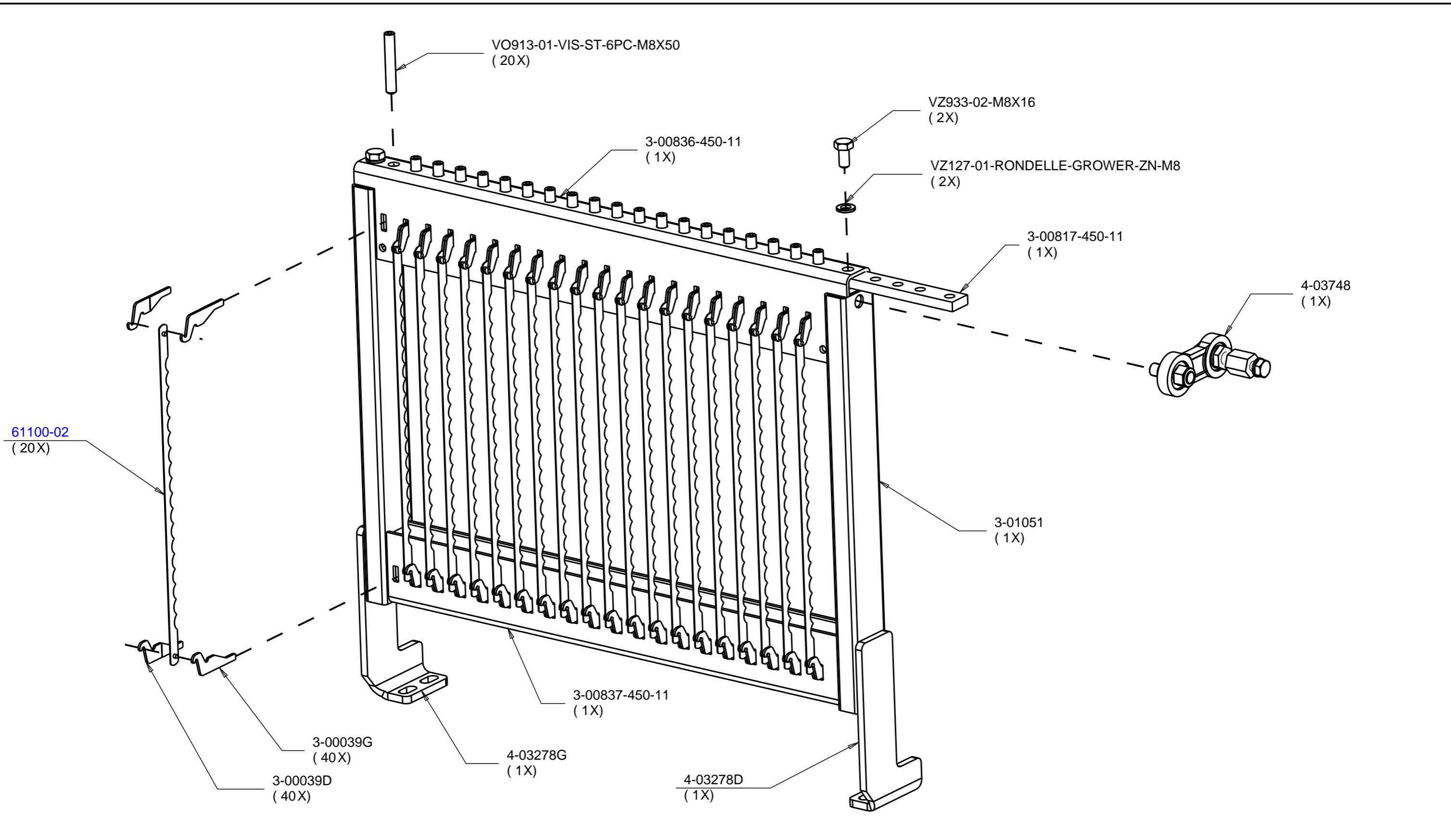
Roue directionnelle assemblée






Assemblage du cadre avant.

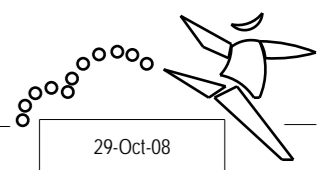
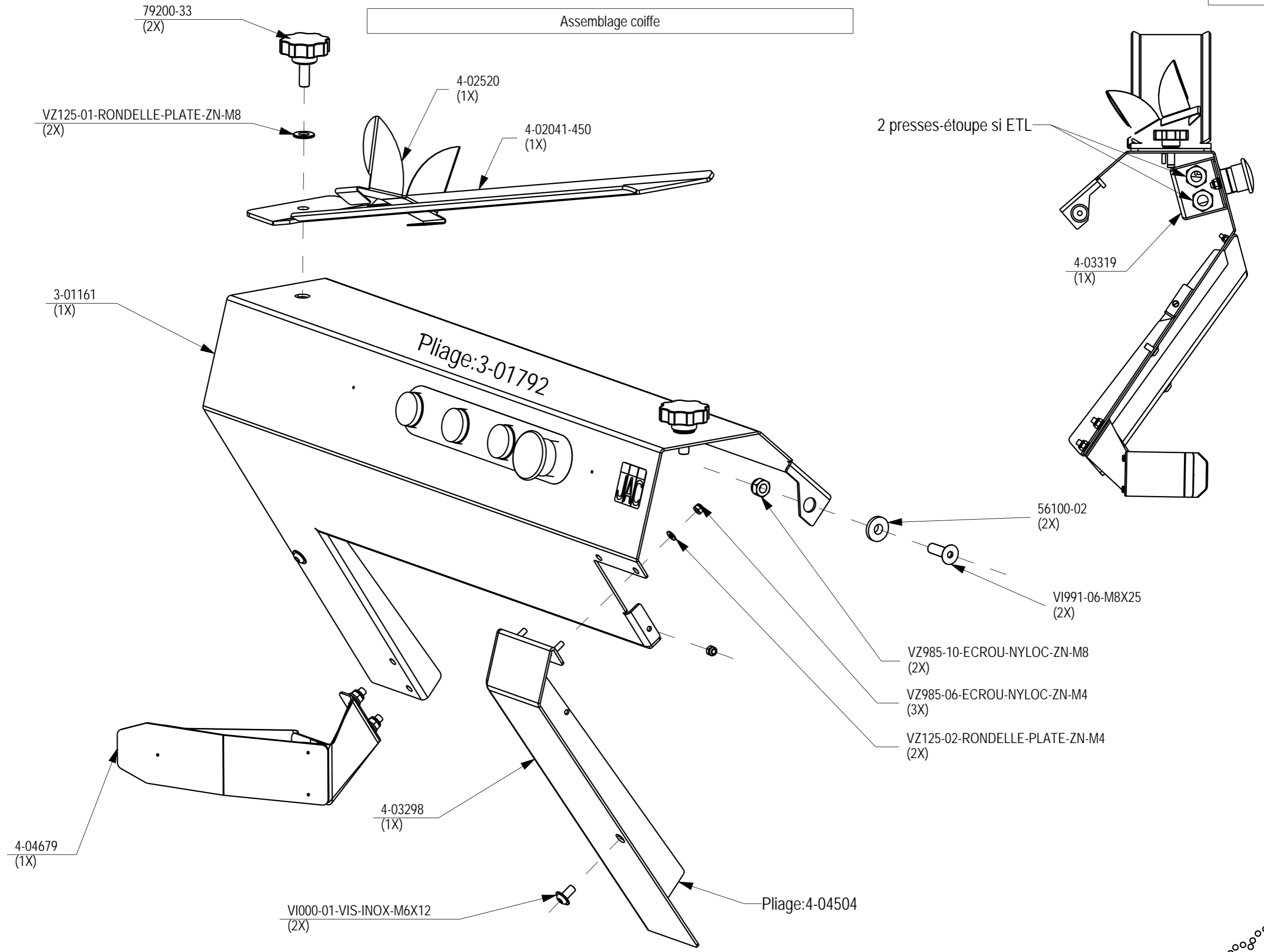
				1)240101
				2)131101
				3)180302
				4/
				5/
		JAC s.a. Div. Liège Verte Voie, 49-51 B-4000 Sclessin-Liège BELGIUM	Tél.: +32 4 234.98.70 Fax.: +32 4 234.98.97 info@jac-machines.com TVA: BE 403 958 973	Machine Type : BFL EFL/EFG/EFK/EFS
Echelle :	Matière	--	Tol. Gen. : ±	Date : 09 01 01
7/20	Dimensions	MAT2	TOL	
	Traitement	MAT3	SD	N° Plans : 3-01052/3



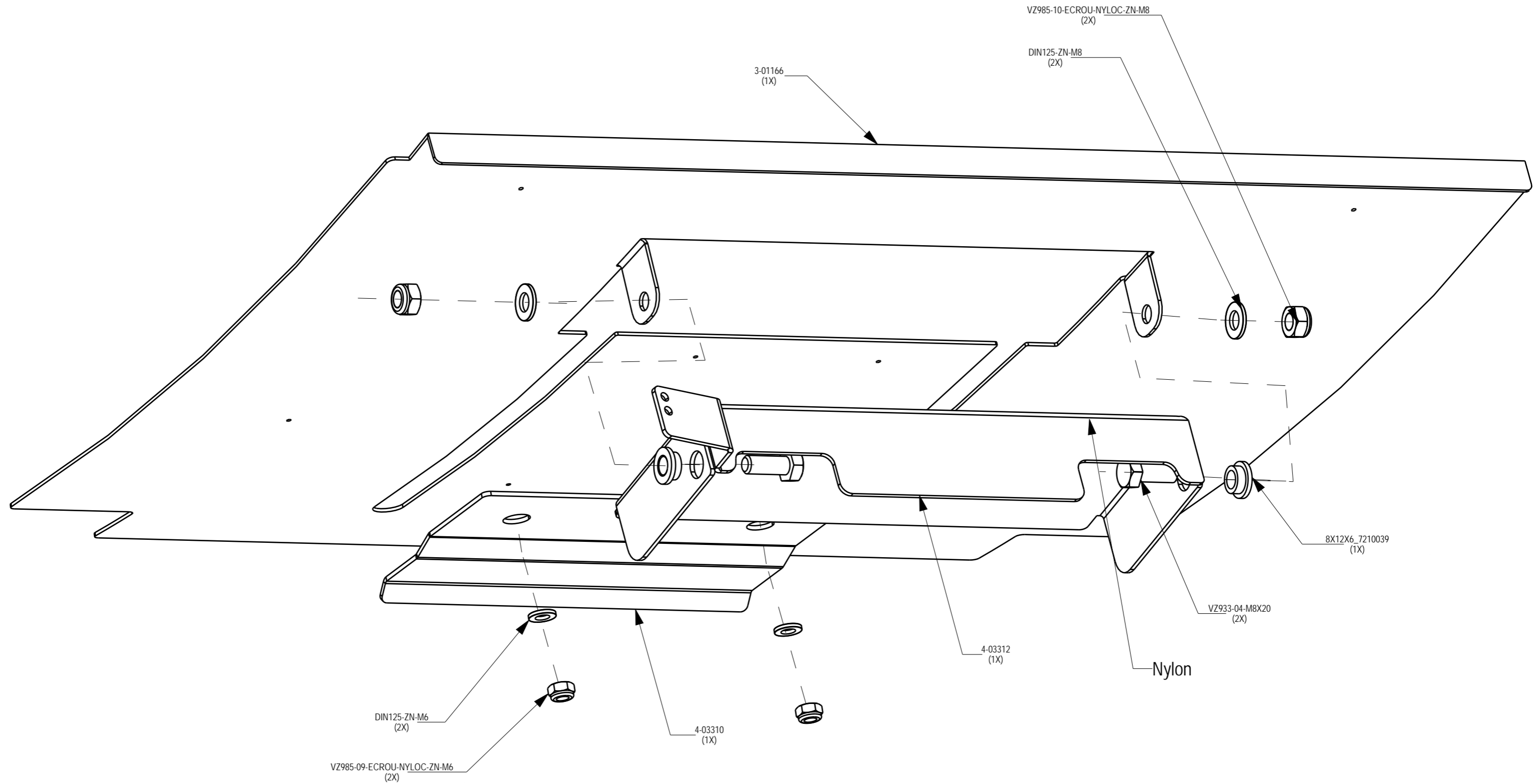
Assemblage cadre avant.

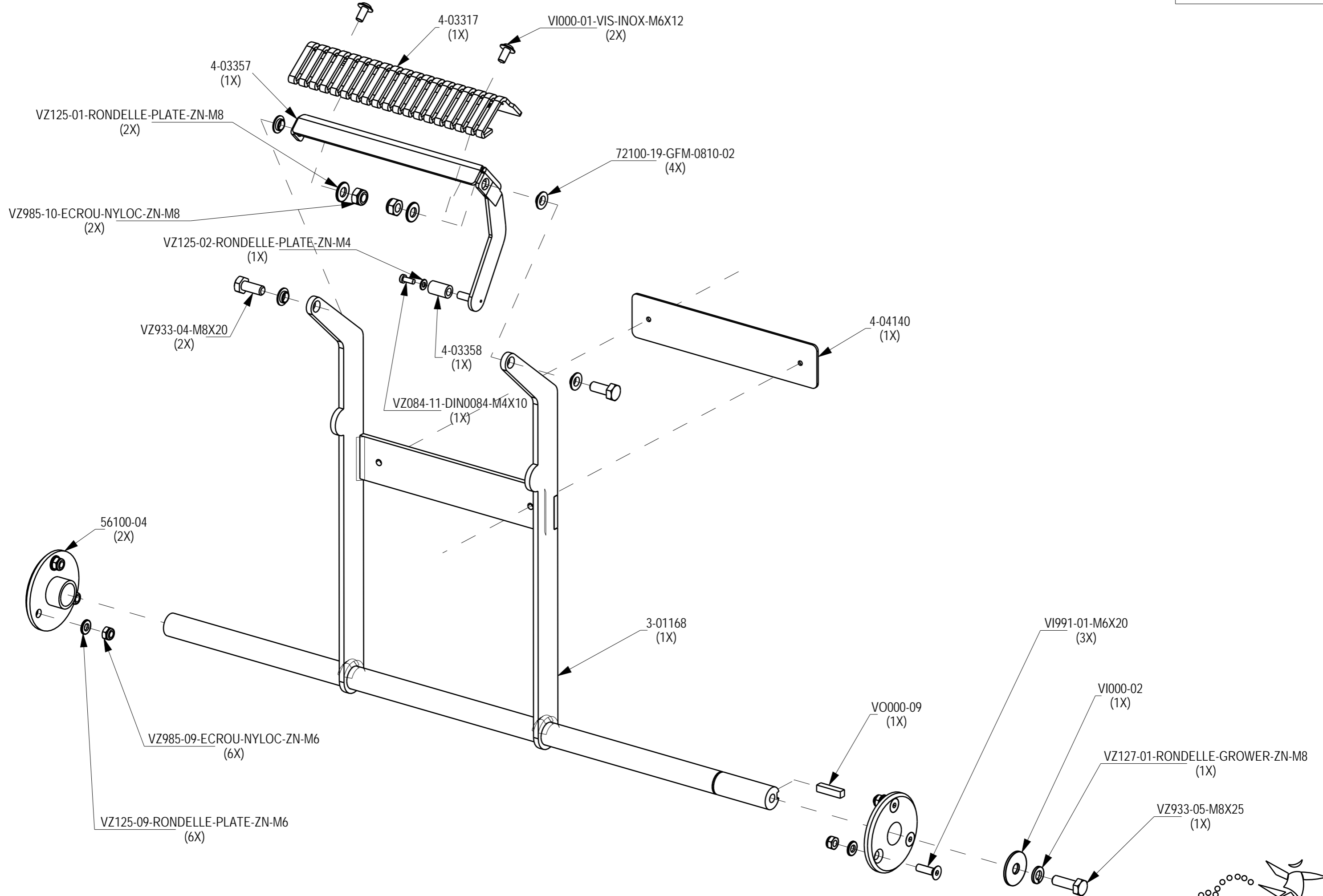
				1)131101
				2)180302
				3/
				4/
				5/
		JAC s.a. Div. Liège Verte Voie, 49-51 B-4000 Sclessin-Liège BELGIUM	Tél.: +32 4 234.98.70 Fax.: +32 4 234.98.97 info@jac-machines.com TVA: BE 403 958 973	Machine Type : BFL EFL/EFG/EFK/EFS
Echelle :	Matière	--	Tol. Gen. : ±	Date : 17 01 01
7/20	Dimensions	MAT2	TOL	
	Traitement	MAT3	SD	
			N° Plans :	3-01053/2

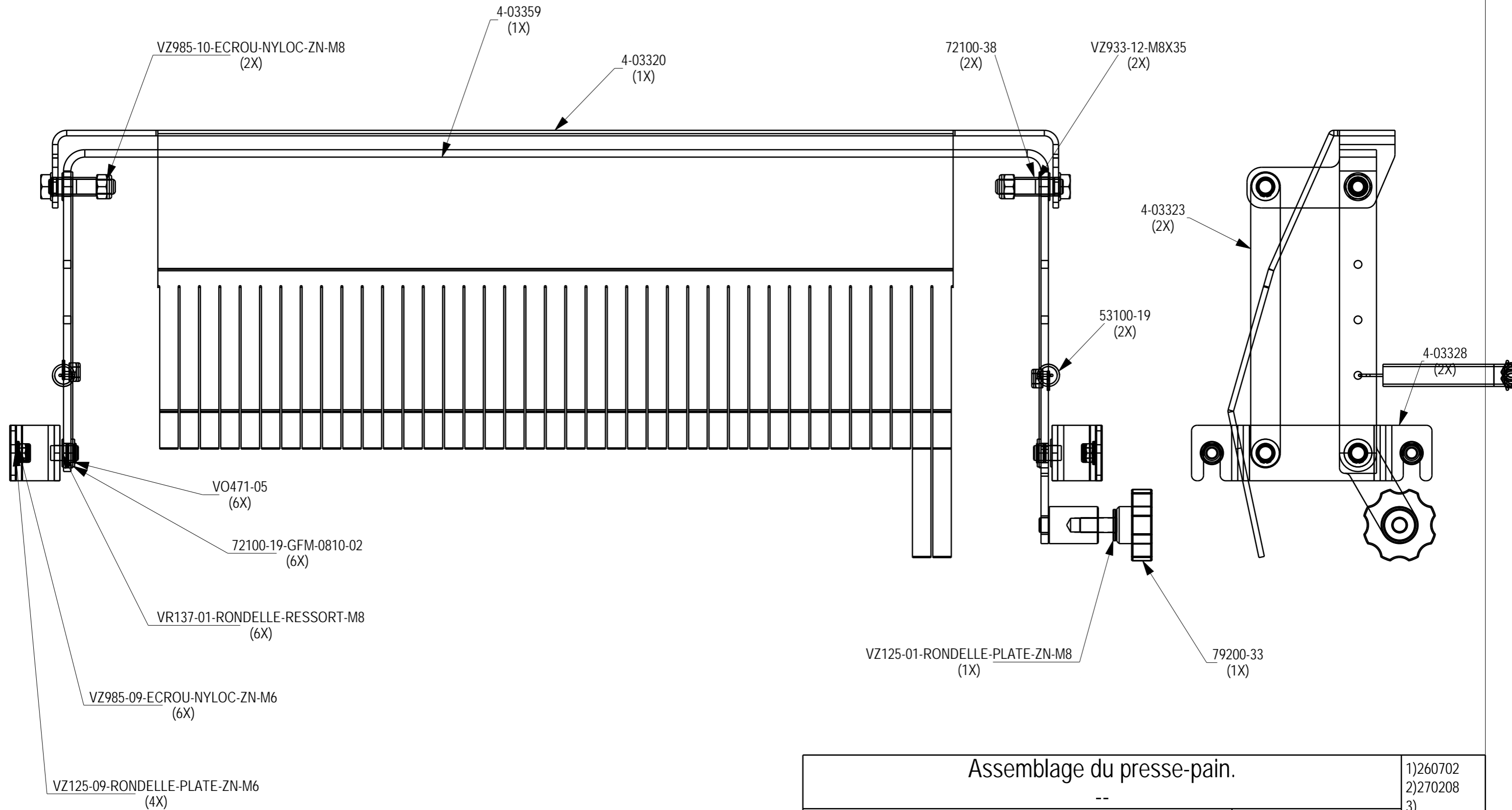
Assemblage coiffe



Assemblage table arrière







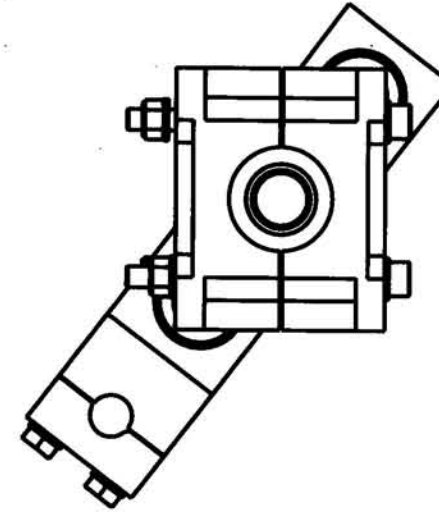
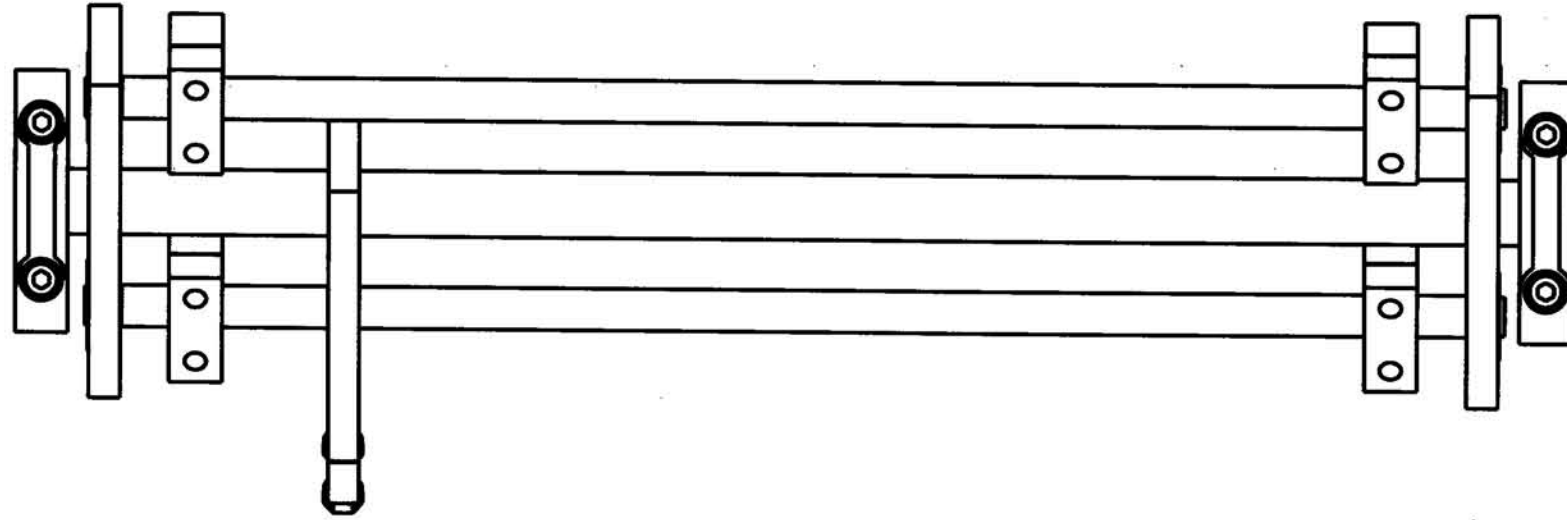
Assemblage du presse-pain.

				1)260702
				2)270208
				3)
				4)
				5)
		Machine Type : --		
		LCL		
Echelle :	Matière	--	Tol. Gen. : ±	Date : 30 05 02
1/2	Dimensions	--	SD	N° Plans : 3-1170/ 2
	Traitement	--		




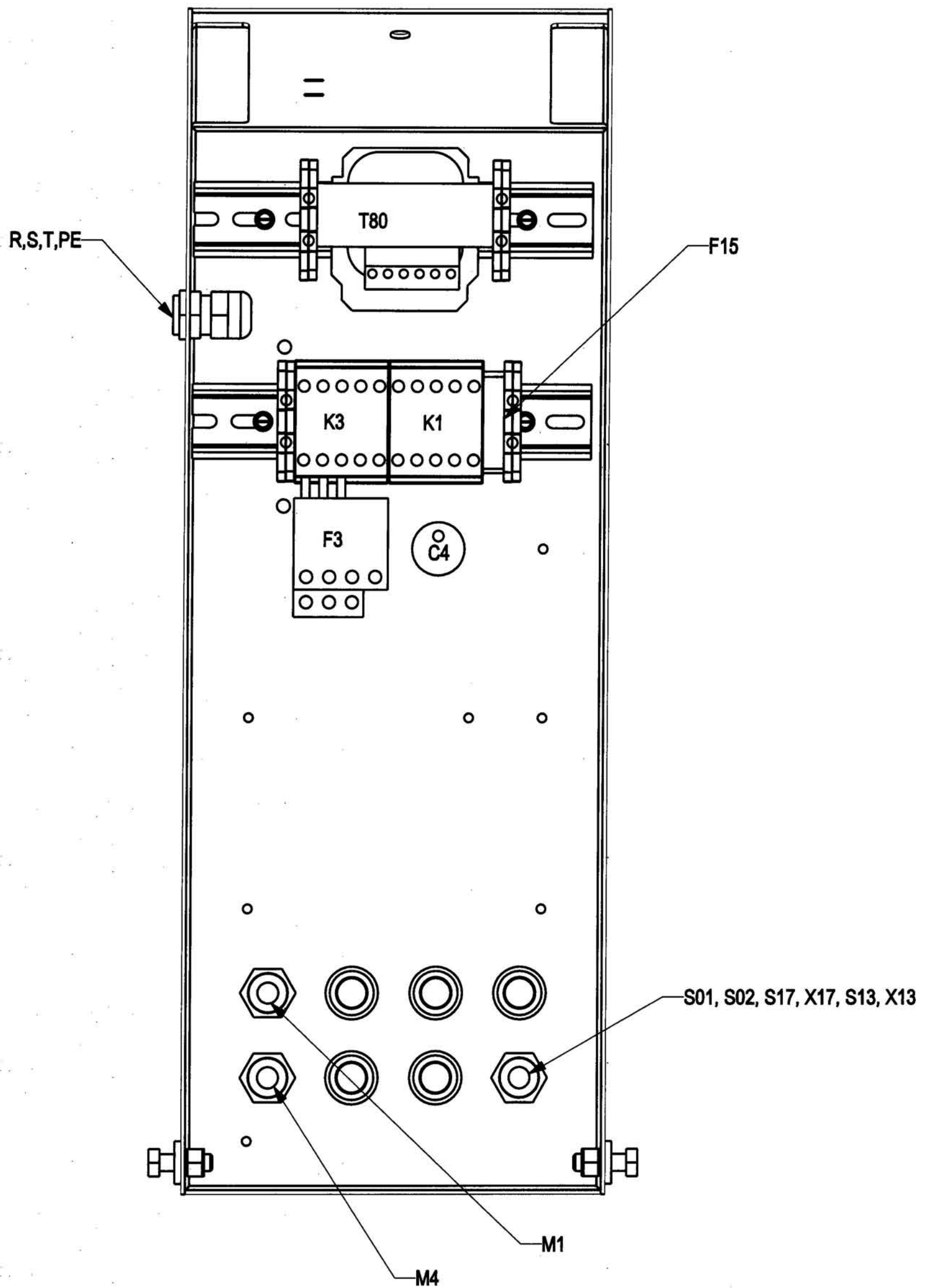
JAC s.a. Div. Liège
Verte Voie, 49-51
B-4000 Sclessin-Liège
BELGIUM

Tel.: +32 4 234.98.70
Fax.: +32 4 234.98.97
info@jac-machines.com
TVA: BE 403 958 973




C'est le même axe de balancier que la modena

Assemblage de la'axe de balancier.				1)
---				2)
---				3)
---				4)
---				5)
	JAC s.a. Div. Liège Vertis Vole, 49-51 B-4000 Scléesin-Liège BELGIUM		Tél.: +32 4 234.98.70 Fax: +32 4 234.98.97 info@jac-machines.com TVA: BE 403 968 973	Machine Type : ---
	Echelle : 7/20	Matière Dimensions Traitement	--- --- ---	Tol. Gen. : --- SD



Disposition du coffret électrique.

		JAC s.a. Div. Liège Verte Vole, 49-51 B-4000 Scléesin-Liège BELGIUM		Tél.: +32 4 234.96.70 Fax: +32 4 234.96.97 info@jac-machines.com TVA: BE 403 658 873		Machine Type : --- LCL		1) 10 09 02 2) 3) 4) 5)	
		Echelle :		Matière : --- Dimensions : --- Traitement : ---		Tol. Gen. : ± ---		Date : 26 07 02	
				SD		N° Plans :		3-1183/ 1.	

Assemblage capot arrière

VD00112-INSERT-M6-ER
(4X)

VI991-07-M6X16
(4X)

4-04675
(1X) (Optionnel)

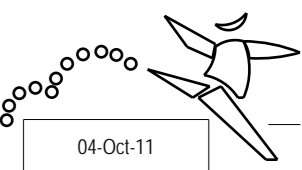
VZ125-02-RONDELLE-PLATE-ZN-M4
(5X)

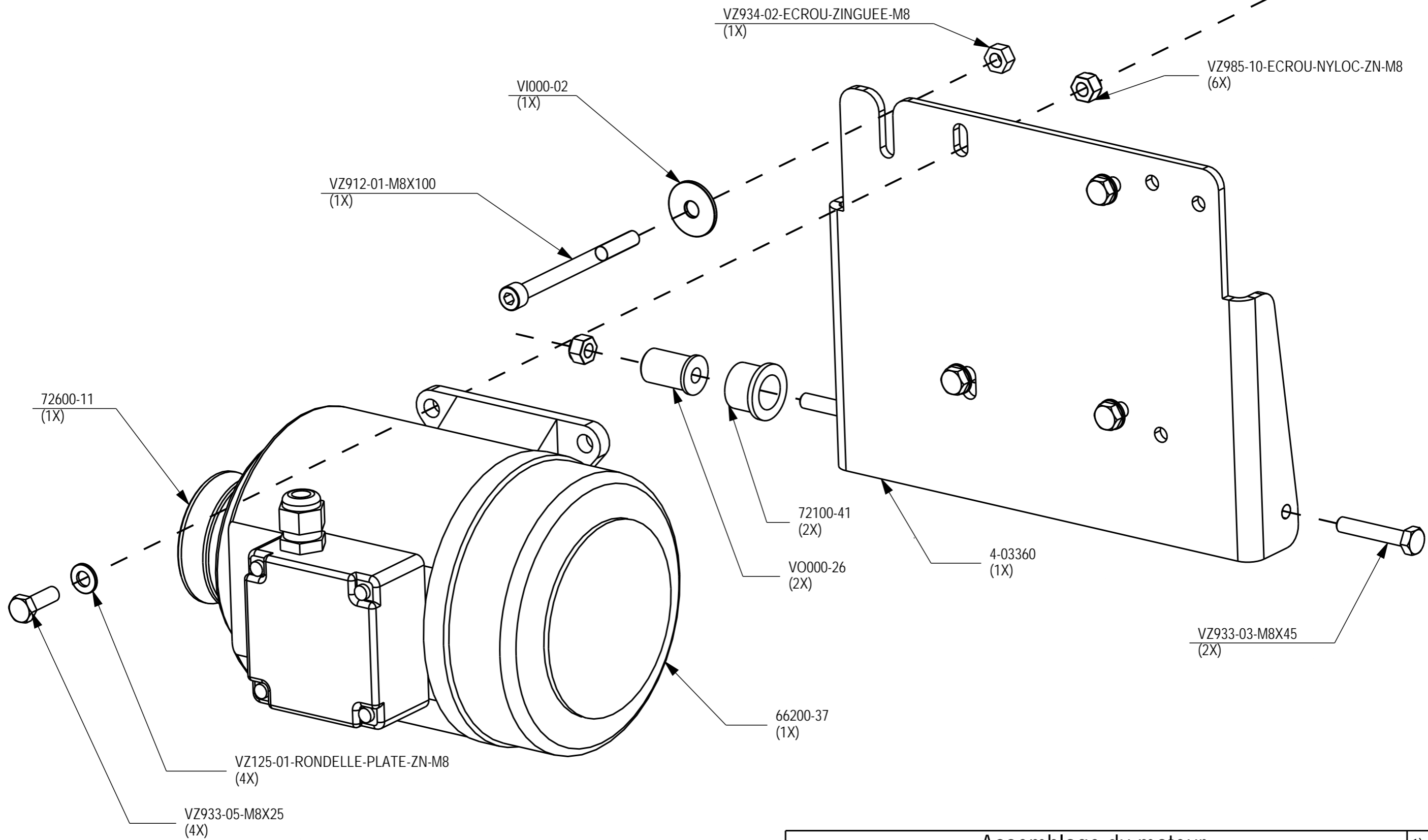
VZ985-06-ECROU-NYLOC-ZN-M4
(5X)

56901-55
(1X)

3-01154
(1X)

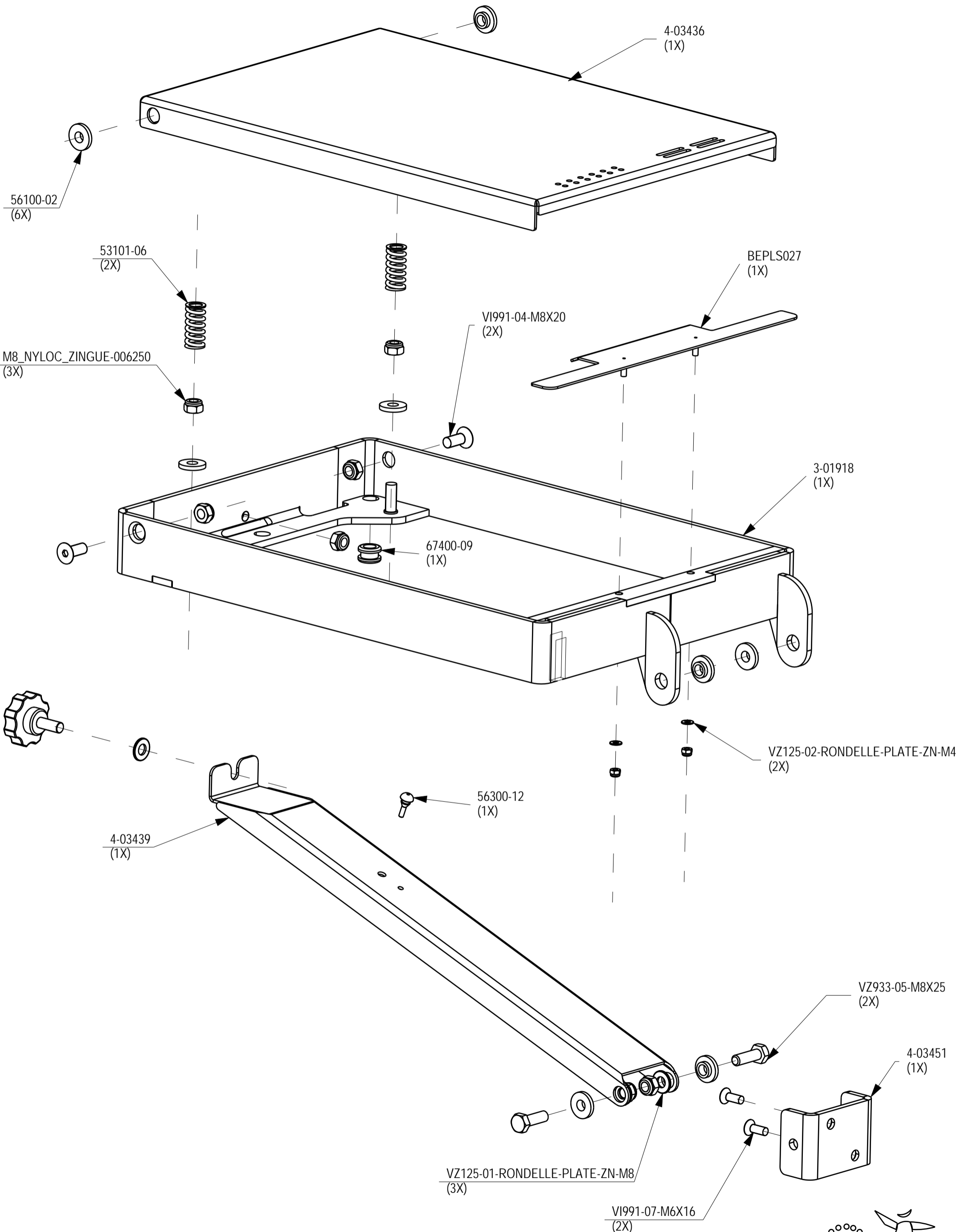
56300-12
(2X)



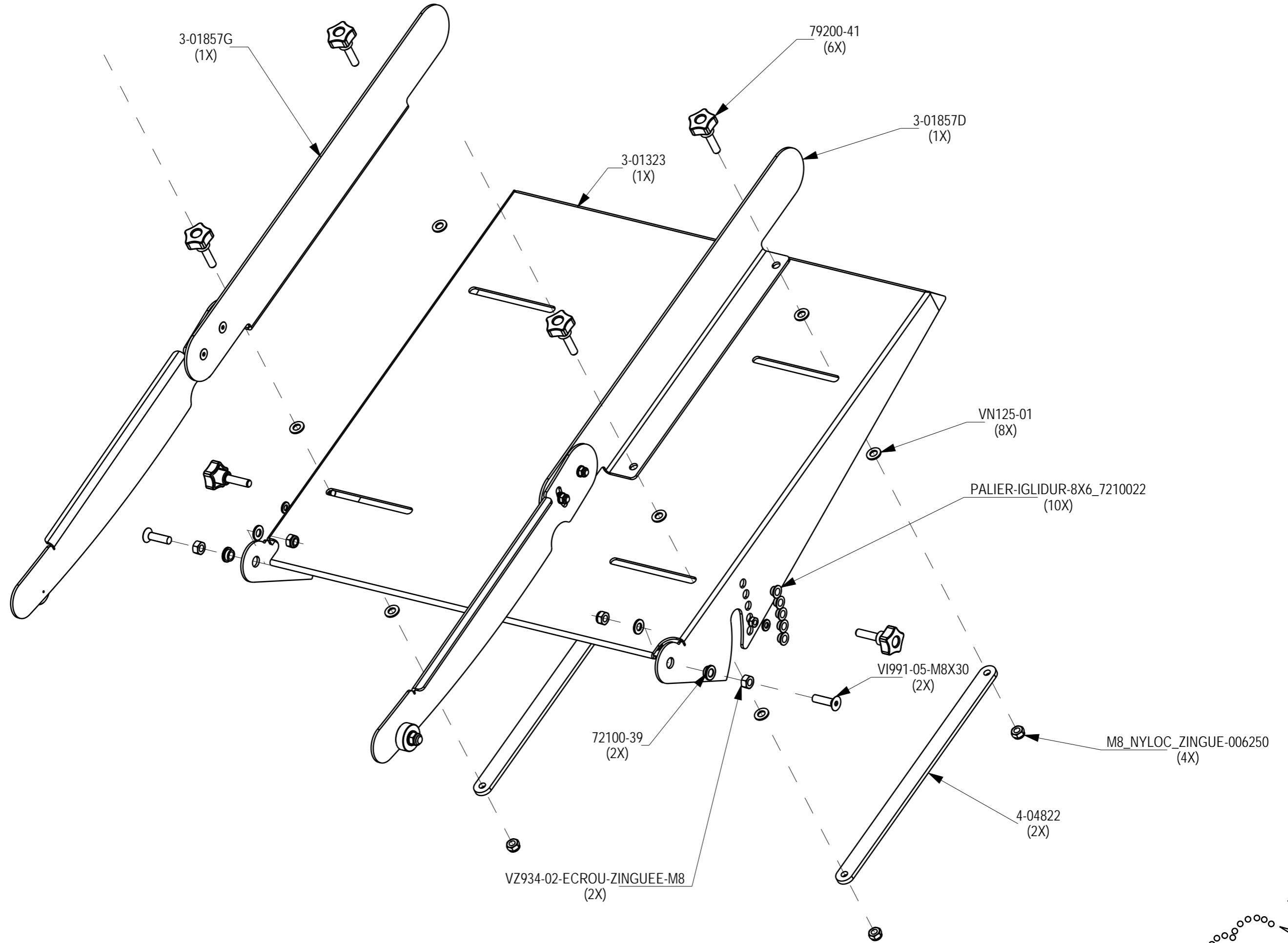


Assemblage du moteur.					
--					
JAC		JAC s.a. Div. Liège Verte Voie, 49-51 B-4000 Sclessin-Liège BELGIUM	Tél.: +32 4 234.98.70 Fax.: +32 4 234.98.97 info@jac-machines.com TVA: BE 403 958 973	Machine Type : LCL EFG/EFK/EFL/EFS	1) 10 08 02 2) 3) 4) 5)
Echelle :	Matière	--	Tol. Gen. : ±	--	Date : 26 07 02
1/2	Dimensions	--	SD	N° Plans :	3-01186/ 2.
	Traitement	--			

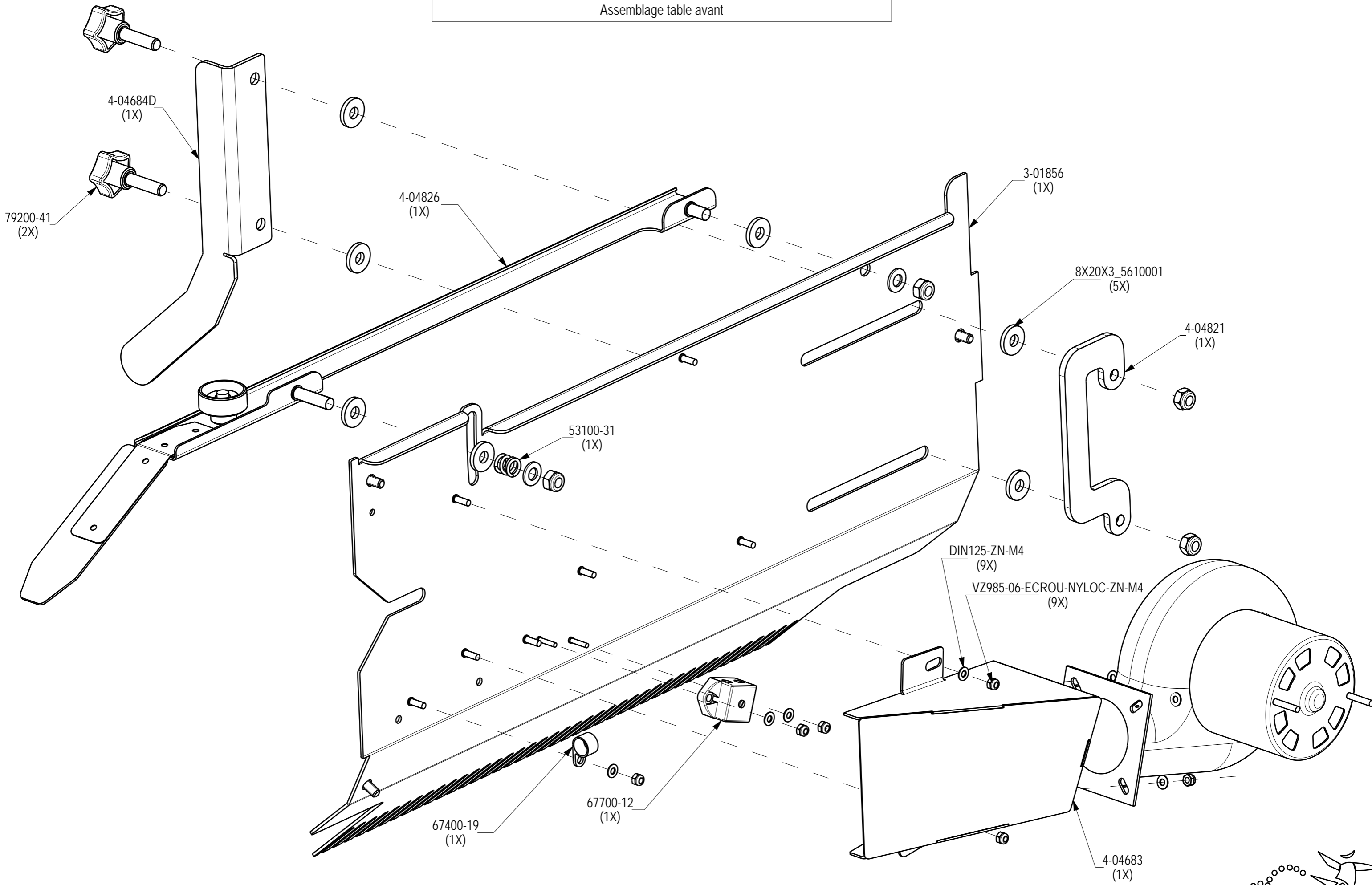
Tablette de souffleuse assemblée



Rampe assemblée

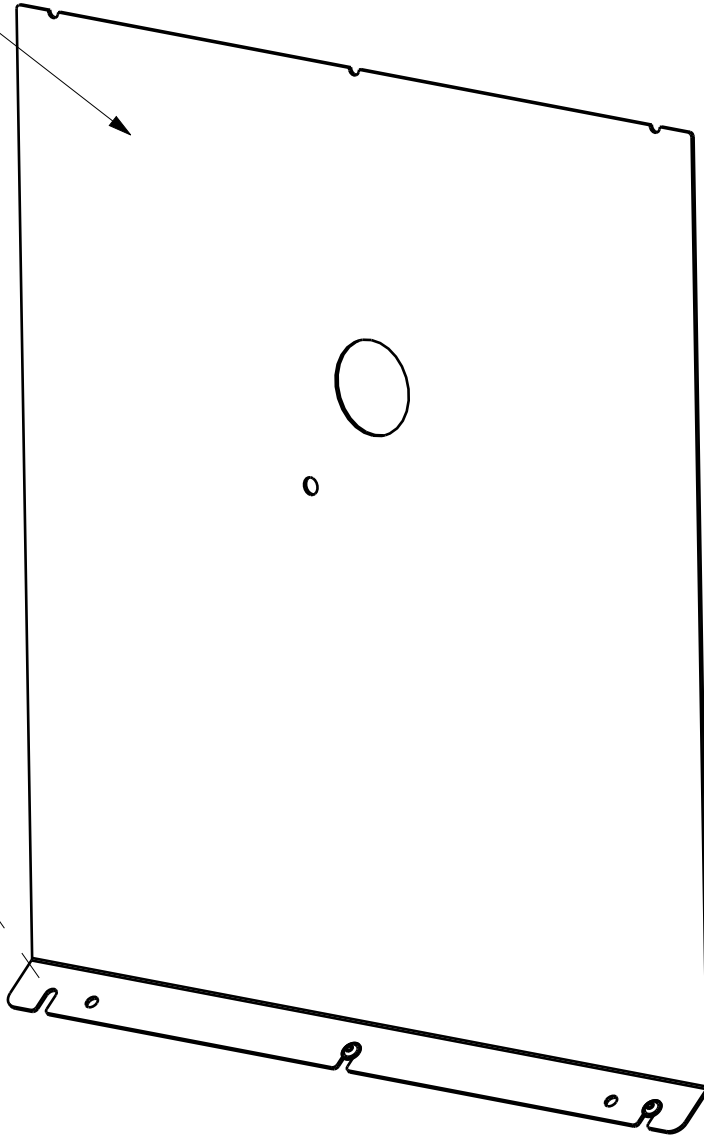


Assemblage table avant





IND.	DATE	MODIF.	PAR	VERIF.

4-04577
(1X)



VI000-01-VIS-INOX-M6X12
(3X)

DESIGNATION: Tôle arrière assemblée			N° PLAN: 4-04578 -	
ECHELLE: 1/5	QUANTITE: 1	MATIERE:	POIDS: kg	FINITION:
A4	BELGIUM JAC SA DIV LIEGE Verte Voie 49-51 B-4000 Sclessin Tel 32 4 234.98.70 Fax 32 4 234.98.97 BE 403 958 973	Ce document est la propriété exclusive de JAC SA, il ne peut en aucun cas être copié ou communiqué à un tiers, et pour aucune raison que ce soit, sans l'autorisation expresse de JAC SA	 www.jac-machines.com	
VERIFIE PAR:	DESSINE PAR: FL	DATE: 30-Jun-09	TOLERANCE GEN: 0,2	PAGE : 1/1