



**Kelvinator** 

## Factory Parts Catalog

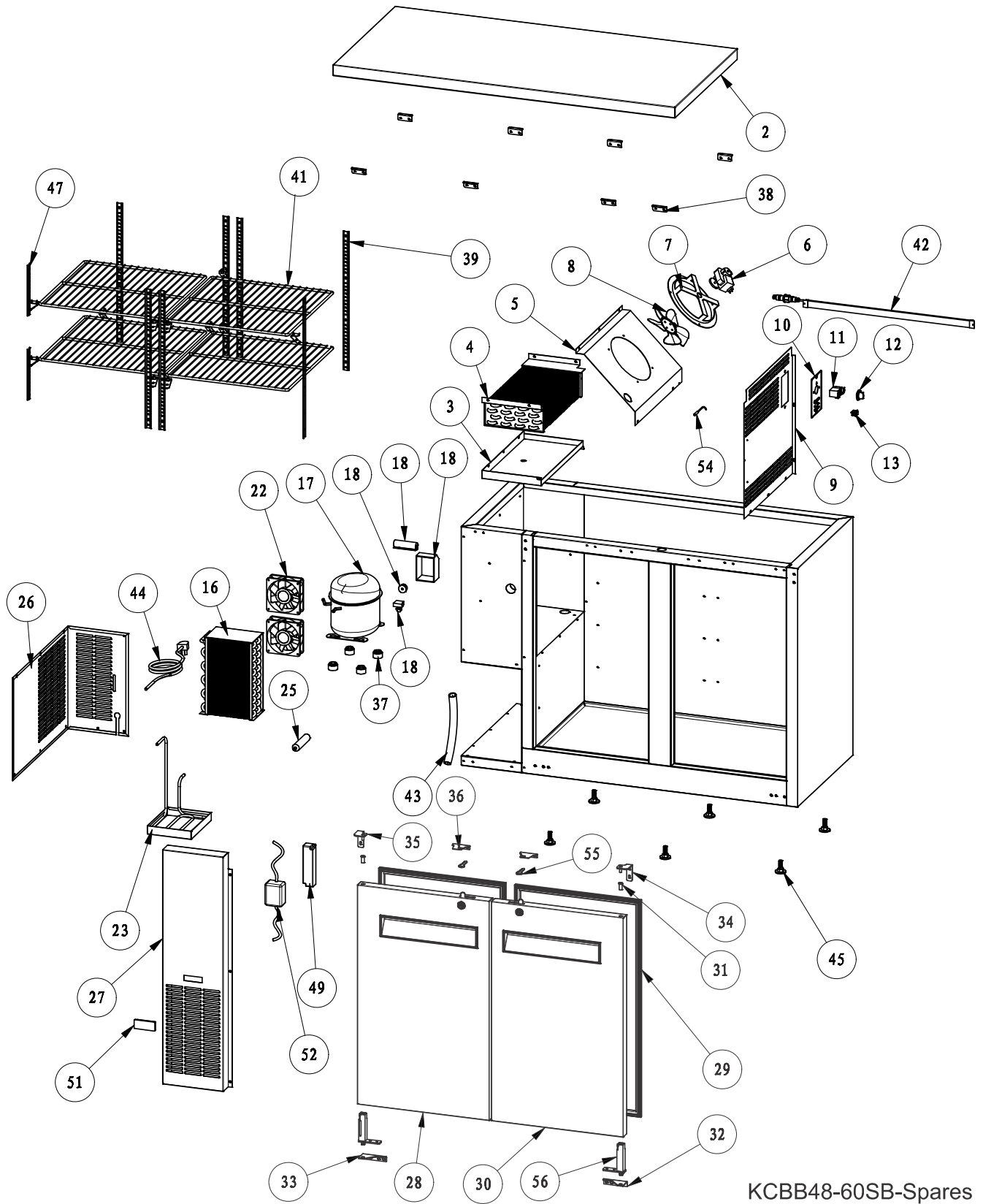
Product No.	KCBB48SB	KCBB60SB
Series	back bar	back bar
Color	steel door	steel door
Volts	115	115
Market	NA Commercial	NA Commercial

### **BACK-BAR REFRIGERATOR**

Model No.  
KCBB48S / KCBB60S

Publication No.  
**5995651857**  
14/10/02  
(EN/SERVICE/KC)  
099

RECOMMENDED SPARE PARTS



KCBB48-60SB-Spares

**RECOMMENDED SPARE PARTS**

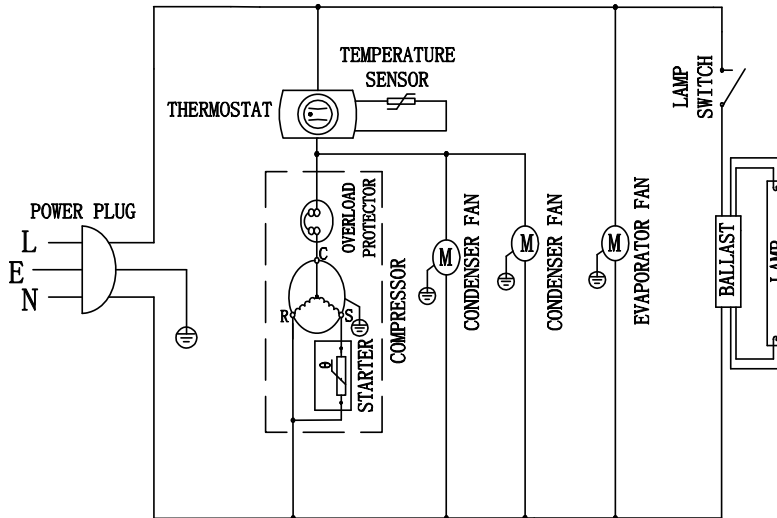
*Model Index:* A KCBB48S (KCBB48SB)  
 B KCBB60S (KCBB60SB)

POS. NO	PART NO.	DESCRIPTION
2	5304498393	A - Panel, table top
2	5304498439	- B Panel, table top
3	5304498394	A B Pan, defrost drain, evaporator
4 #	5304498395	A B Evaporator
5	5304498396	A B Panel, motor mount, evap fan
6 #	5304493162	A B Motor, evaporator fan
7	5304498397	A B Bracket, motor mount, evap fan
8 #	5304493160	A B Fan Blade, evaporator fan
9	5304498398	A B Cover, evaporator
10	5304493112	A B Panel, controller mtg.
11 #	5304493158	A B Control, temperature
12	5304493114	A B Knob, temp controller, rotary
13 #	5304493113	A B Switch, lamp, rocker
16 #	5304498399	A B Condenser
17 #	5304493171	A B Compressor
18 #	5304498391	A B Electrical Parts, compressor
22 #	5304492231	A B Fan Assy, evaporator, with motor
23	5304498400	A B Pan, drain, condensate
25 #	5304493106	A B Filter-drier
26	5304498401	A B Panel, side/back, louvered
27	5304498402	A B Panel, service access, front
28	5304498431	A - Door, steel, left side
28	5304498443	- B Door, steel, left side
29 #	5304498432	A - Gasket, steel door seal
29 #	5304498444	- B Gasket, steel door seal
30	5304498433	A - Door, steel, right side
30	5304498445	- B Door, steel, right side
31	5304493360	A B Hinge Pin, door, upper
32	5304493361	A B Hinge, door, bottom right
33	5304493409	A B Hinge, door, bottom left
34	5304498435	A B Hinge, door, upper right
35	5304498436	A B Hinge, door, upper left
36	5304498437	A B Base Plate, lock
37	5304498390	A B Grommet, compressor mtg
38	5304498449	A B Block, fastener, top/back bar
39	5304493483	A B Pilaster, shelf mount, 4 screw
41	5304497341	A - Shelf, right/left
41	5304497342	- B Shelf, right/left
42	5304493285	A B Lamp, LED
43 #	5304493401	A B Tube, drain, 16 mm dia
44 #	5304493100	A B Power Cord, electric, 115 V
45	5304493526	A B Foot, leveling screw, adjustable
47	5304493396	A B Pilaster, shelf mount, 2 screw
49 #	5304493305	A B Ballast, lamp
51 #	5304493083	A B Display, temperature, Fahrenheit
52 #	5304493077	A B Transformer, temp display
54 #	5304493402	A B Probe, temp display, Fahrenheit
55	5304492341	A B Key, door lock
56	5304492217	A B Door Closer, hinge spring

**WIRING DIAGRAM**

Kelvinator Commercial

**CIRCUIT DIAGRAM**



CONFORMS TO UL STD. 471

CERTIFIED TO CSA STD. C22.2 No. 120-M91

CONFORMS TO NSF/ANSI STD. 7

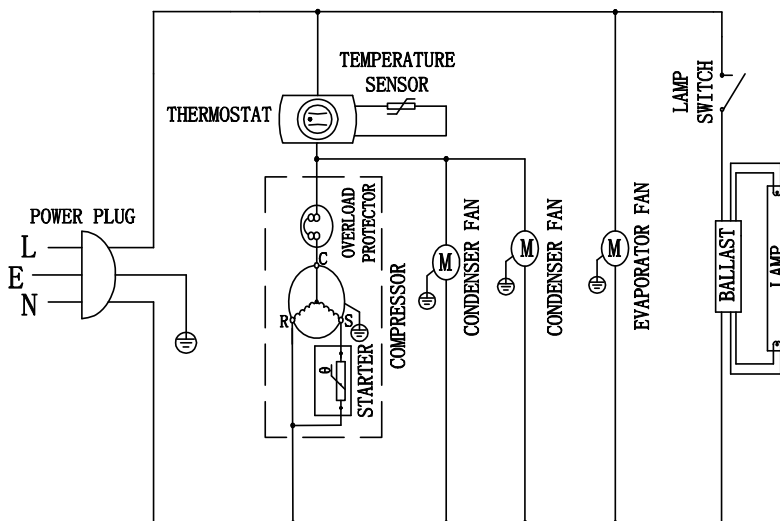
MODEL : KCBB48SB

TECHNIC PARAMETER

DESIGNED PRESSURE	
HIGH SIDE	210PSI
LOW SIDE	90PSI
REFRIGERANT	R134a
AMOUNT	10.58oz
FOAM AGENT	141b
RATED VOLTAGE	AC115V
FREQUENCY	60Hz
RATED CURRENT	7.2A
NET WEIGHT	105Kg
MANUFACTURED	

Kelvinator Commercial

**CIRCUIT DIAGRAM**



CONFORMS TO UL STD. 471

CERTIFIED TO CSA STD. C22.2 No. 120-M91

CONFORMS TO NSF/ANSI STD. 7

MODEL : KCBB60SB

TECHNIC PARAMETER

DESIGNED PRESSURE	
HIGH SIDE	210PSI
LOW SIDE	90PSI
REFRIGERANT	R134a
AMOUNT	10.58oz
FOAM AGENT	141b
RATED VOLTAGE	AC115V
FREQUENCY	60Hz
RATED CURRENT	7.5A
NET WEIGHT	125Kg
MANUFACTURED	