



**Kelvinator** 

## Factory Parts Catalog

Product No.	KCBM48FS
Series	Reach-in Frzr
Color	stainless steel
Volts	115
Wiring Diagram	KCBM48F
Owner's Guide	242230200
Market	North America

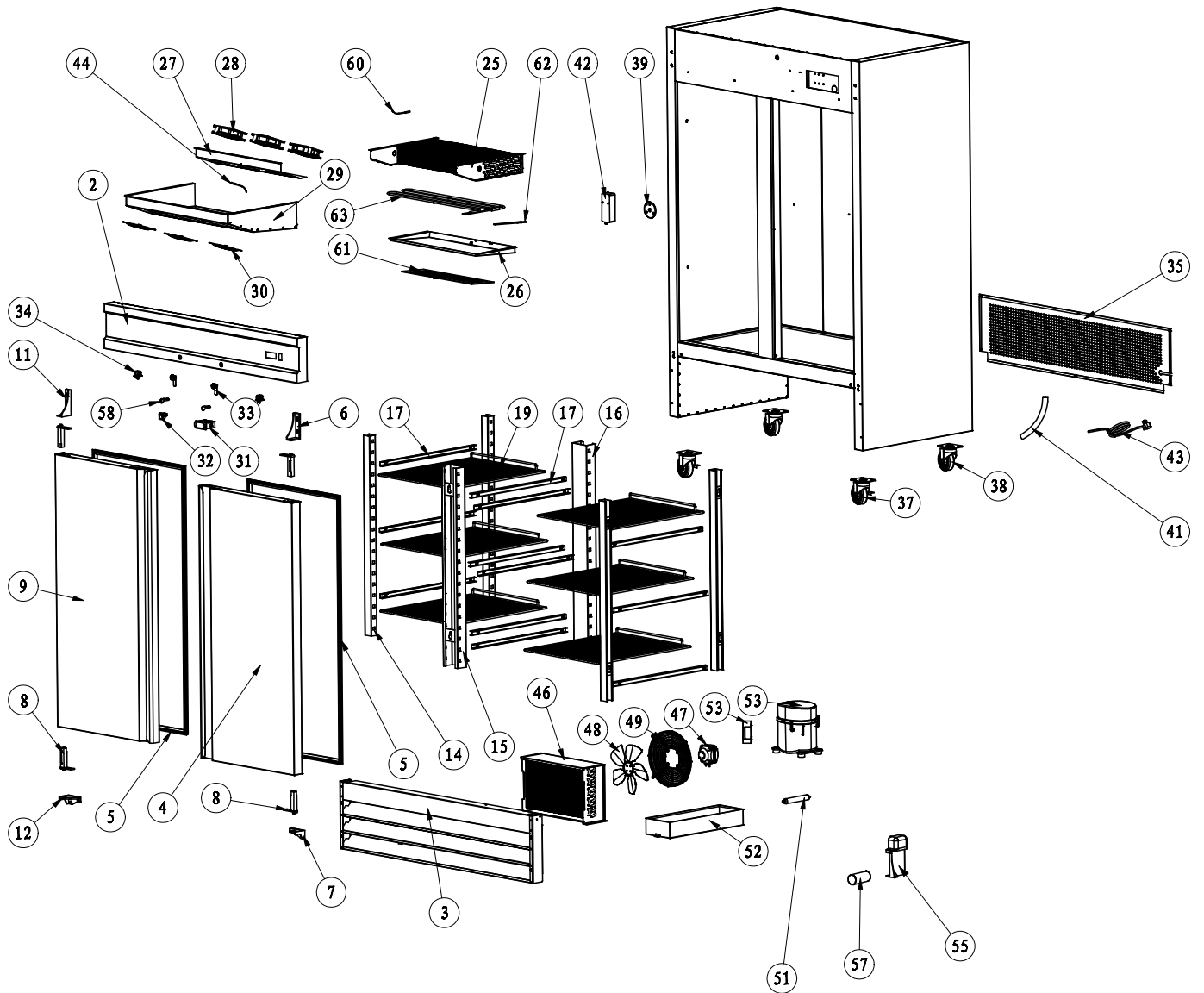
This Catalog replaces 5995620936

Publication No.  
**5995649471**  
14/08/12  
(EN/SERVICE/KC)  
099

### REACH-IN FREEZER

Model No.  
KCBM48F

RECOMMENDED SPARE PARTS



KCBM48F1-Spares

---

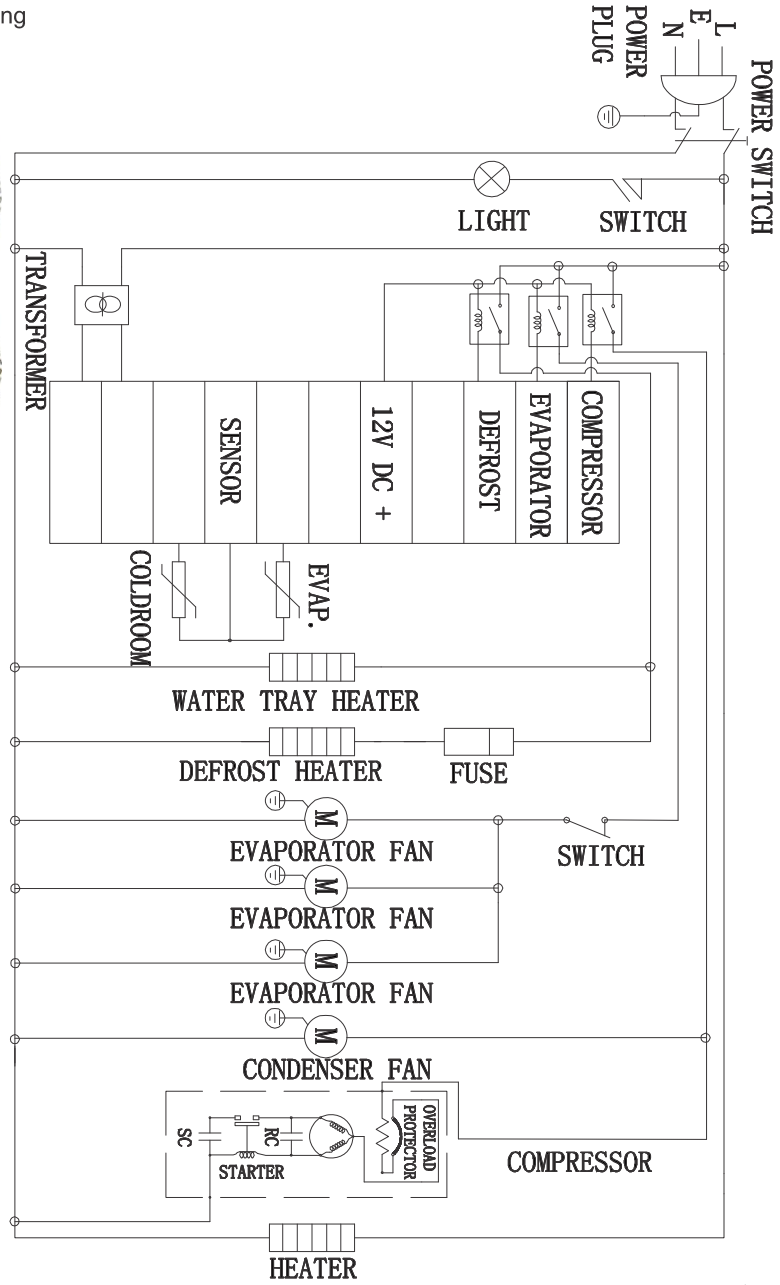
**RECOMMENDED SPARE PARTS**


---

POS. NO	PART NO.	DESCRIPTION
2	5304492346	Panel, control, header
3	5304492347	Grille, vent, front
4	5304492348	Door, right side
5 #	5304492349	Gasket, door
6	5304492215	Hinge, upper, right
7	5304492216	Hinge, bottom, right
8	5304492217	Door Closer, hinge spring
9	5304492350	Door, left side
11	5304492351	Hinge, upper, left
12	5304492352	Hinge, bottom, left
14	5304492222	Channel, shelf mount
15	5304492353	Channel, shelf, center front
16	5304492354	Channel, shelf, center rear
17	5304492223	Track Set, shelf, left & right
19	5304492224	Shelf
25 #	5304495899	Evaporator
26	5304496424	Pan, defrost drain, evaporator
27	5304495901	Panel, fan motor mount, housing
28 #	5304492231	Fan Assy, evaporator, with motor
29	5304492355	Cover, evaporator
30	5304492253	Cover, evaporator fan
31 #	5304496524	Controller, temp, (Juchuang)
31 #	5304492245	Controller, temp, (Carel)
32 #	5304492248	Switch, power
33	5304492260	Lock, door
34 #	5304492259	Switch, lamp, door activated
35	5304497715	Panel, service access, rear
37	5304492261	Caster, 4 inch diameter, locking
38	5304492262	Caster, 4 inch diameter
39	5304492263	Cover, drain hole, plug
41 #	5304492265	Tube, drain, outer
42 #	5304492266	Lamp/Light Assembly
43 #	5304492356	Power Cord, electric, 115 V
44 #	5304492340	Probe, temp controller
46 #	5304492358	Condenser
47 #	5304492360	Motor, condenser fan
48 #	5304492362	Fan Blade, condenser fan
49	5304492363	Cover, condenser fan
51 #	5304492275	Filter-drier
52	5304492364	Drain Pan, defrost
53 #	5304493029	Compressor, w/built-in ovlid
55 #	5304493069	Relay/Starter
57 #	5304493070	Capacitor, run
58	5304492341	Key, door lock
60 #	5304492342	Sensor, temperature, evaporator
61 #	5304492385	Heater, drain pan
62 #	5304492344	Heater, drain hose
63 #	5304492387	Heater, evaporator, defrost

**WIRING DIAGRAM**

KCBM48F\_Wiring



**CIRCUIT DIAGRAM**

**MODEL : CFD-2FF**

**TECHNIC PARAMETER**

DESIGNED PRESSURE	
HIGH SIDE	354PSI
LOW SIDE	188PSI
REFRIGERANT	R404A
AMOUNT	850g
FOAM AGENT	141b
RATED VOLTAGE	AC115V
FREQUENCY	60Hz
RATED CURRENT	9.9A
NET WEIGHT	203Kg
MANUFACTURED	