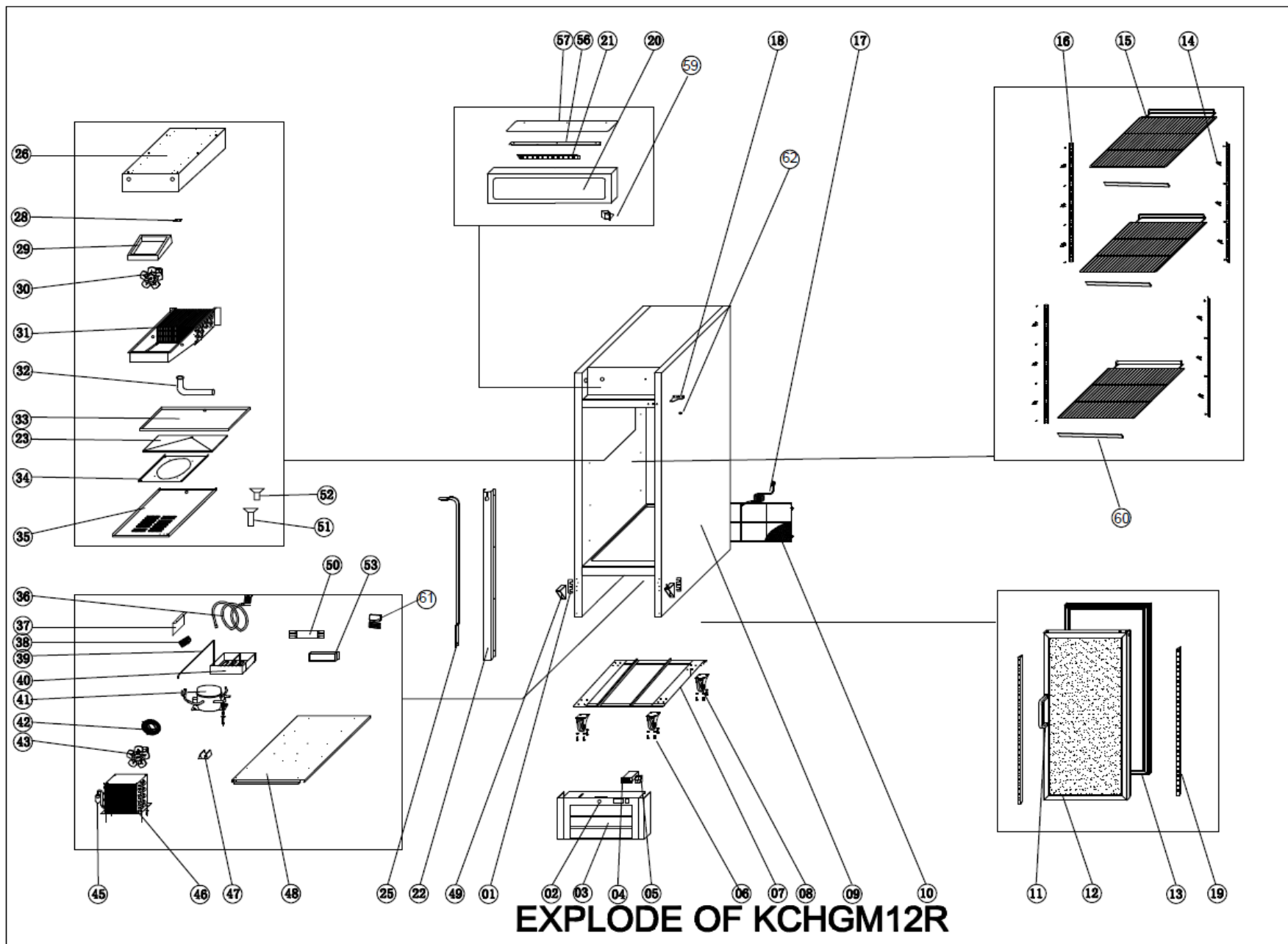


### Spare Parts List

| NO  | DESCRIPTION                             | Serial #  | QTY   | COMPONENT PNC | Model Number | Model PNC |
|-----|---|-----------|-------|---------------|--------------|-----------|
| 1   | Washer Of Down Hinge                    | ALL       | 2PCS  | 0USI26        | KCHGM12R     | 738247    |
| 2   | LOCK (with key)                         | ALL       | 1PC   | 096258        | KCHGM12R     | 738247    |
| 3   | Front Panel                             | ALL       | 1PC   | 0USG77        | KCHGM12R     | 738247    |
| 4   | Thermostat - Full Set                   | <03720040 | 1PC   | 0USDAD        | KCHGM12R     | 738247    |
| 4a  | Thermostat Contactor                    | <03720040 | 1PC   | 0USH89        | KCHGM12R     | 738247    |
| 4b  | Thermostat Display                      | <03720040 | 1PC   | 0USN67        | KCHGM12R     | 738247    |
| 4c  | Thermostat Components                   | <03720040 | 1PC   | 0USDAA        | KCHGM12R     | 738247    |
| 4   | TEMPERATURE CONTROLLER                  | ≥03720040 | 1PC   | 0USET         | KCHGM12R     | 738247    |
| 4a  | Inner Chest Temperature Sensor Probe    | ALL       | 1PC   | 0USC4D        | KCHGM12R     | 738247    |
| 5   | Light Switch                            | ALL       | 1PC   | 0USH45        | KCHGM12R     | 738247    |
| 6   | BRAKE WHEEL                             | ALL       | 2PCS  | 0USF04        | KCHGM12R     | 738247    |
| 7   | Support Of Unit Board                   | ALL       | 1PCS  | 0USH87        | KCHGM12R     | 738247    |
| 8   | NORMAL WHEEL                            | ALL       | 2PCS  | 0USH64        | KCHGM12R     | 738247    |
| 8a  | Castor Mounting Bolt (4-PACK)           | ALL       | 4PC   | 0USC2T        | KCHGM12R     | 738247    |
| 8b  | Castor Mounting Locking Washer (4-PACK) | ALL       | 4PC   | 0USC2Z        | KCHGM12R     | 738247    |
| 8c  | Castor Mounting Flat Washer (4-PACK)    | ALL       | 4PC   | 0USC2Y        | KCHGM12R     | 738247    |
| 9   | Body                                    | ALL       | 1PC   | N/A           | KCHGM12R     | 738247    |
| 10  | Unit Room Cover                         | ALL       | 1PC   | 0USI06        | KCHGM12R     | 738247    |
| 10a | LOCATION KNOB                           | ALL       | 2PCS  | 0USH46        | KCHGM12R     | 738247    |
| 11  | Handle                                  | ALL       | 1PC   | 0USH05        | KCHGM12R     | 738247    |
| 11a | Handle Mounting Bolt                    | ALL       | 2PCS  | 0USC6P        | KCHGM12R     | 738247    |
| 12  | Glass Door                              | ALL       | 1PC   | 0USH02        | KCHGM12R     | 738247    |
| 13  | Gasket                                  | ALL       | 1PC   | 0USG92        | KCHGM12R     | 738247    |
| 14  | K Shape Clip                            | ALL       | 16PCS | 0USH19        | KCHGM12R     | 738247    |
| 15  | Shelf                                   | ALL       | 3PCS  | 0USCOR        | KCHGM12R     | 738247    |
| 16  | Shelf Support                           | ALL       | 4PCS  | 0USN69        | KCHGM12R     | 738247    |
| 16a | Shelf Support Screw                     | ALL       | 24PCS | 0USM14        | KCHGM12R     | 738247    |
| 17  | PLUG                                    | ALL       | 1PC   | 0USH67        | KCHGM12R     | 738247    |
| 18  | Door Hinge Up Right                     | ALL       | 1PC   | 0USF82        | KCHGM12R     | 738247    |
| 19  | Led Strip(Left)                         | ALL       | 1PC   | 0USH40        | KCHGM12R     | 738247    |
| 19a | Led Strip(Right)                        | ALL       | 1PC   | 0USH42        | KCHGM12R     | 738247    |
| 20  | Lamp Cover                              | ALL       | 1PC   | 0USH25        | KCHGM12R     | 738247    |
| 20a | DOOR SWITCH BOX                         | ALL       | 1PCS  | 0USN68        | KCHGM12R     | 738247    |
| 21  | Led Lamp                                | ALL       | 1PC   | 0USH32        | KCHGM12R     | 738247    |
| 22  | Suction Pipe Cover                      | ALL       | 1PC   | 0USH84        | KCHGM12R     | 738247    |
| 23  | Keep Warm Board                         | ALL       | 1PC   | 0USH21        | KCHGM12R     | 738247    |
| 25  | Vertical Suction Pipe+Capillary A       | ALL       | 1PC   | 0USI19        | KCHGM12R     | 738247    |
| 26  | Fixed Board Of Evaporator               | <20720240 | 1PC   | 0USK30        | KCHGM12R     | 738247    |
|     |   | ≥20720240 | 1PC   | 0USDH1        | KCHGM12R     | 738247    |
| 28  | Sensor Fixed Clip                       | ALL       | 1PC   | 0USM11        | KCHGM12R     | 738247    |
| 29  | Wind Guide Foam                         | ALL       | 1PC   | 0USI40        | KCHGM12R     | 738247    |
| 30  | Circle Fan                              | ALL       | 1PC   | 0USF12        | KCHGM12R     | 738247    |
| 31  | Evaporator                              | <20720240 | 1PC   | 0USG26        | KCHGM12R     | 738247    |
|     |   | ≥20720240 | 1PC   | 0USDSF        | KCHGM12R     | 738247    |
| 31a | Evaporator Temperature Sensor Probe     | ALL       | 1PC   | 0USC65        | KCHGM12R     | 738247    |
| 32  | Water Pipe                              | ALL       | 1PC   | 0USI36        | KCHGM12R     | 738247    |

|     |                                     |           |      |                        |          |        |
|-----|-------------------------------------|-----------|------|------------------------|----------|--------|
| 32a | DRAIN FIXER                         | ALL       | 1PC  | <a href="#">0USN75</a> | KCHGM12R | 738247 |
| 33  | Evaporator Water Pan                | ALL       | 1PC  | 096284                 | KCHGM12R | 738247 |
| 34  | Evaporator Fan Support              | ALL       | 1PC  | <a href="#">0USK29</a> | KCHGM12R | 738247 |
| 35  | Evaporator Fan Cover                | <20720240 | 1PC  | <a href="#">0USK31</a> | KCHGM12R | 738247 |
|     |                                     | ≥20720240 | 1PC  | <a href="#">0USDSI</a> | KCHGM12R | 738247 |
| 36  | Helix Suction Pipe+Capillary B      | ALL       | 1PC  | <a href="#">0USH11</a> | KCHGM12R | 738247 |
| 37  | Lamp Support                        | ALL       | 1PC  | <a href="#">0USH28</a> | KCHGM12R | 738247 |
| 38  | Cable Connector                     | ALL       | 1PC  | <a href="#">0USF09</a> | KCHGM12R | 738247 |
| 39  | Discharge Pipe                      | ALL       | 1PC  | <a href="#">0USF57</a> | KCHGM12R | 738247 |
| 40  | Water Box                           | ALL       | 1PC  | <a href="#">0USI32</a> | KCHGM12R | 738247 |
| 41  | Compressor                          | ALL       | 1PC  | <a href="#">0USF23</a> | KCHGM12R | 738247 |
| 41a | COMPRESSOR ELECTRICAL COMPONENT SET | ALL       | 1PC  | <a href="#">0USDF0</a> | KCHGM12R | 738247 |
| 42  | BASKET GUARD GRILLS                 | ALL       | 1PC  | <a href="#">0USDIJ</a> | KCHGM12R | 738247 |
| 43  | Condenser Fan                       | ALL       | 1PC  | <a href="#">0USF15</a> | KCHGM12R | 738247 |
| 43a | CONDENSER FAN BLADE                 | ALL       | 1PC  | <a href="#">0USC4J</a> | KCHGM12R | 738247 |
| 45  | Filter Drier                        | ALL       | 1PC  | <a href="#">0USG66</a> | KCHGM12R | 738247 |
| 45a | CAPILLARY                           | ALL       | 1PC  | <a href="#">0USL42</a> | KCHGM12R | 738247 |
| 46  | Condenser                           | ALL       | 1PC  | <a href="#">0USF36</a> | KCHGM12R | 738247 |
| 47  | DRIER SUPPORT                       | ALL       | 1PC  | <a href="#">0USI78</a> | KCHGM12R | 738247 |
| 48  | Unit Board                          | ALL       | 1PC  | <a href="#">0USJ66</a> | KCHGM12R | 738247 |
| 50  | LED POWER SUPPLIER                  | ALL       | 1PC  | <a href="#">0USH34</a> | KCHGM12R | 738247 |
| 49  | Door Hinge /Down right              | ALL       | 1PC  | <a href="#">0USF75</a> | KCHGM12R | 738247 |
| 49a | Plastic Door Hinge Cover /Down left | ALL       | 1PC  | 0USDGT                 | KCHGM12R | 738247 |
| 51  | DRAIN PIPE(B EXT)                   | ALL       | 1PC  | <a href="#">096261</a> | KCHGM12R | 738247 |
| 52  | Drain Pipe (A Int)                  | ALL       | 1PC  | <a href="#">096263</a> | KCHGM12R | 738247 |
| 53  | Led Power Supply                    | ALL       | 1PC  | <a href="#">0USH37</a> | KCHGM12R | 738247 |
| 57  | Lamp Cover Protector                | ALL       | 1PC  | <a href="#">0USJ83</a> | KCHGM12R | 738247 |
| 59  | Door Switch                         | ALL       | 1PC  | <a href="#">0USF85</a> | KCHGM12R | 738247 |
| 60  | Label Support                       | ALL       | 3PCS | <a href="#">0USN71</a> | KCHGM12R | 738247 |
| 61  | Controller Protector box            | ALL       | 1PC  | <a href="#">0USN72</a> | KCHGM12R | 738247 |
| 61a | Controller Protector cover          | ALL       | 1PC  | <a href="#">0USN73</a> | KCHGM12R | 738247 |
| 62  | HINGE AXIS JACKET                   | ALL       | 1PC  | <a href="#">0USN74</a> | KCHGM12R | 738247 |



**EXPLODE OF KCHGM12R**