

....

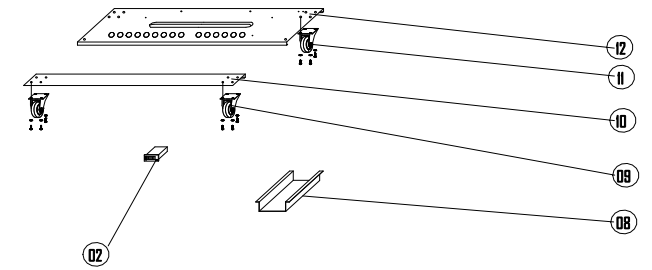
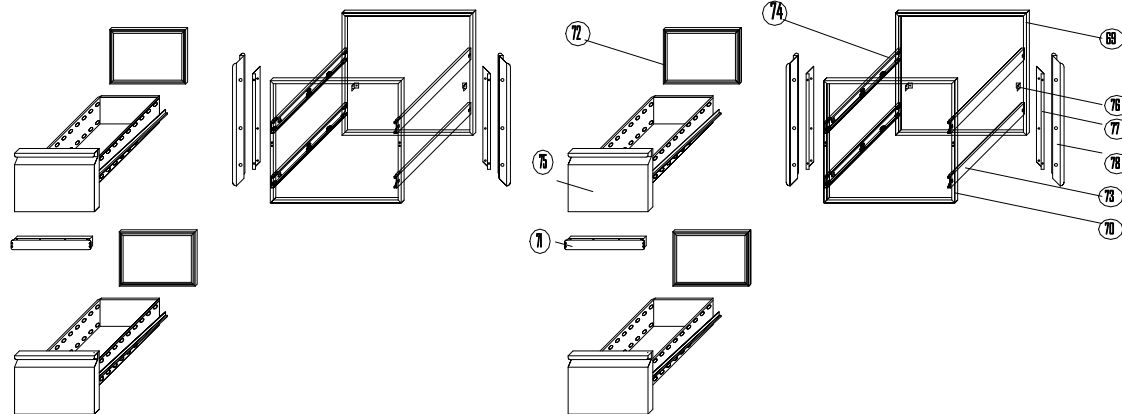
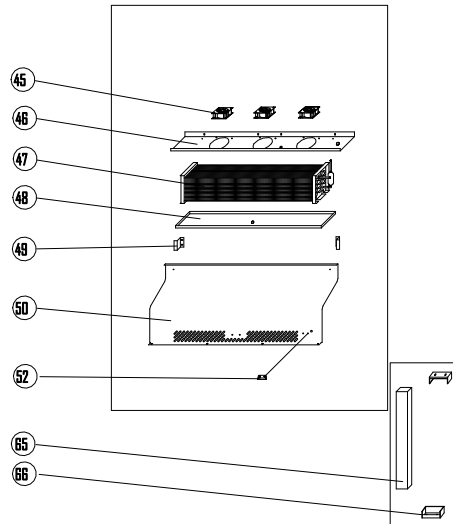
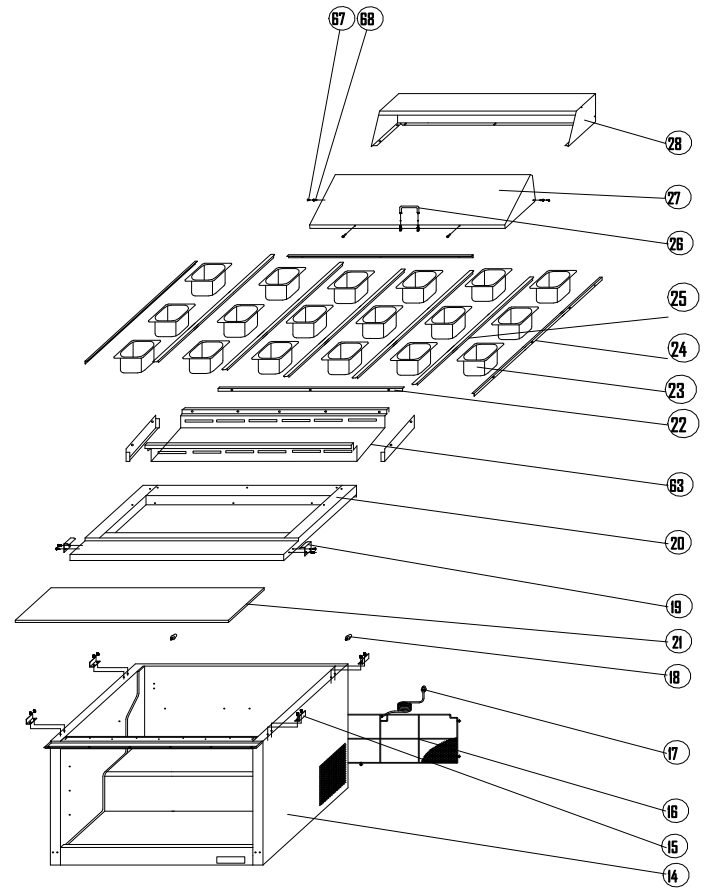
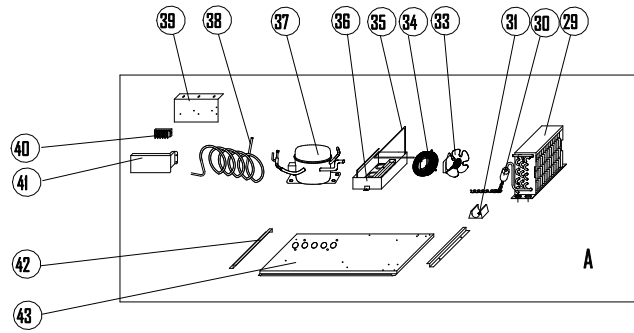
.....DF9D'H56 @

PNC MODEL

738G Ì ÁÁÁÁ SÔPT VI Ì ÈÌ È Ö

Pag.	Indice	Index
2	Disegni	Drawings
3	Lista ricambi	Spare parts list

Brand / Marchio: KELVINATOR



EXPLODE OF KCHMT48.18.4D

SPARE PARTS LIST OF KCHMT48.18.4D

Nº.	ELECTROLUX PNC	NAME	ERP	QTY.	MATERIAL	REMARK
2	0USF42	THERMOSTAT CONTROLLER	104020039	1PC		D20-001M
	0USC4C	Inner Chest Temperature Sensor Probe	XR20C-TempSensorProbe-738263	1PC		BLACK
4	0USJ47	THERMOSTAT FIX BOARD	113110286	1PC		
8	0USK07	CABLE COVER	5202003668	1PC		
9	0USF03	BRAKE WHEEL	107050008	2PCS		
10	0USJ59	FRONT SUPPORT OF UNIT BOARD	5201006324	1PC		
11	0USH63	NORMAL WHEEL	107050007	2PCS		
	0USK99	Castor Mounting Bolt	107210131	16PCS	Galvanized STEEL	Hexagon Head
	0USL00	Castor Mounting Locking Washer	107210244	16PCS	Galvanized STEEL	
	0USL01	Castor Mounting Flat Washer	107210224	16PCS	Galvanized STEEL	
12	0USJ60	BACK SUPPORT OF UNIT BOARD	5201006325	1PC		
14		BODY	5102002395	1PC		
15	0USL80	TOP CLIP	5201007056	4PCS		
16	0USI14	UNIT ROOM COVER	109040074	1PC	COATED STEEL	
17	0USH67	PLUG	104050013	1PC		
18	0USH46	LOCATION KNOB	114010039	2PCS	RUBBER	
19	0USG68	FIXED PIN OF CUTTING BOARD	5202003562	2PCS		
20	0USM90	TOP	5108000357	1PC		
21	0USM91	CUTTING BOARD	106120018	1PC		
22	0USM92	PAN SUPPORT /FRONT	5203000286F	1PC		
	0USDEH	PAN SUPPORT / BACK	5203000286B	1PC		
23		STANDARD PAN	106070007	18PCS		
24	0USJ32	PAN SUPPORT /LEFT/RIGHT	5203000184	2PCS		
25	0USJ31	PAN SUPPORT	5203000183	5PCS		
26	0USH09	HANDLE OF COVER	107210314	1PC	STAINLESS	
27	0USM93	MOVING COVER	5202003579	1PC		
	0USL46	MOVING COVER LINER	5202005291	1PC		
28	0USM94	FIXED COVER	5202003577	1PC		
	0USL71	FIXED COVER LINER	5202005290	1PC		
29	0USF34	CONDENSER	113010368	1PC		
30	0USG66	FILTER DRIER	107180004	1PC		
	0USM13	CAPILLARY	102050022	1PC		
31	0USI78	DRIER SUPPORT	108300116	1PC		
33	0USF40	CONDENSER FAN	104030019	1PC		
	0USC4J	CONDENSER FAN BLADE	104040001	1PC		
34	0USI46	BASKET GUARD GRILLS	109030031	1PC	COATED STEEL	
35	0USG14	EVAPORATE PIPE	113110265	1PC	COPPER	
36	0USI29	WATER BOX	108140003	1PC	PLASTIC	
37	0USF28	COMPRESSOR	104010249	1PC		
38	0USM95	SUCTION PIPE	113100681	1PC	COPPER	
39	0USDEE	CONNECTOR SUPPORT	5202004245	1PC		
40	0USF09	CABLE CONNECTION	104110005	1PC		
41	0USJ98	CONNECTOR COVER	5202003545	1PC	ZINC	
42	0USK50	GUIDE OF UNIT BOARD/LEFT	5203000284	1PC		
	0USK49	GUIDE OF UNIT BOARD/RIGHT	5203000283	1PC		
43	0USK32	UNIT BOARD	5202004723	1PC		
45	0USF14	CIRCLE FAN	104030041	3PCS		
46	0USL22	CIRCLE FAN SUPPORT	5202003572	1PC		
47	0USM96	EVAPORATOR	5112000394	1PC		
	0USC6R	Evaporator Temperature Sensor Probe	XR20C-TempSensorProbe-738264	1PC		WHITE
48	0USG59	EVAPORATOR WATER PAN	5202003564	1PC	STAINLESS	
49	0USK05	FIXED SUPPORT OF EVAPORATOR COVER	5202003659	2PCS	STAINLESS	
50	0USL23	EVAPORATOR COVER	5202005293	1PC	#ss304	
52	0USM10	SENSOR FIXED CLIP	108110315	1PC	PLASTIC	GRAY
63	0USN00	CONDUCT BOARD	5202006367	1PC	ss304	
	0USL14	CONDUCT BOARD SIDE PLATE	5202006371	2PCS		
65	0USC6D	MIDDLE GIRDER	5118000269P	1PC		
66	0USH59	MIDDLE GIRDER FIXER	108030547	2PCS		
67	0USG67	FIXED BOLT	107210320	2PCS		
68	0USG73	FIXED NUT	107070020	2PCS		

Nº.	ELECTROLUX PNC	NAME	ERP	QTY.	MATERIAL	REMARK
69	0USN01	BACK FRAME	110010009	2PCS		
70	0USN02	FRONT FRAME	110010014	2PCS		
	0USM06	FRONT FRAME COVER (TOP)	5201009249	1PC		
	0USM06	FRONT FRAME COVER (BOTTOM)	5201009249	1PC		
	0USM05	FRONT FRAME COVER (LEFT)	5201010931L	1PC		
	0USDEG	FRONT FRAME COVER (RIGHT)	5201010931R	1PC		
71	0USN03	BRIDGE	5109000160	2PCS		
72	0USN04	GASKET	108270080	4PCS	PVC	
73	0USM46	DRAWER GUIDE (RIGHT)	107250006	4PCS		
74	0USM47	DRAWER GUIDE (LEFT)	107250024	4PCS		
75	0USN05	DRAWER PANNEL	5113000348	4PCS		
	0USN06	DRAWER BODY	5113000189	4PCS		
76	0USM87	BACK FRAME CLIP	5201006278	4PCS		
77	0USM51	BACK DRAWER SUPPORT	5201006297	4PCS		
78	0USM52	FRONT DRAWER SUPPORT	5201008094	4PCS		
	0USM14	Shelf Support Screw	108300165			

REV
10.12.2020