



**COMMERCIAL**

**Spare Parts List**

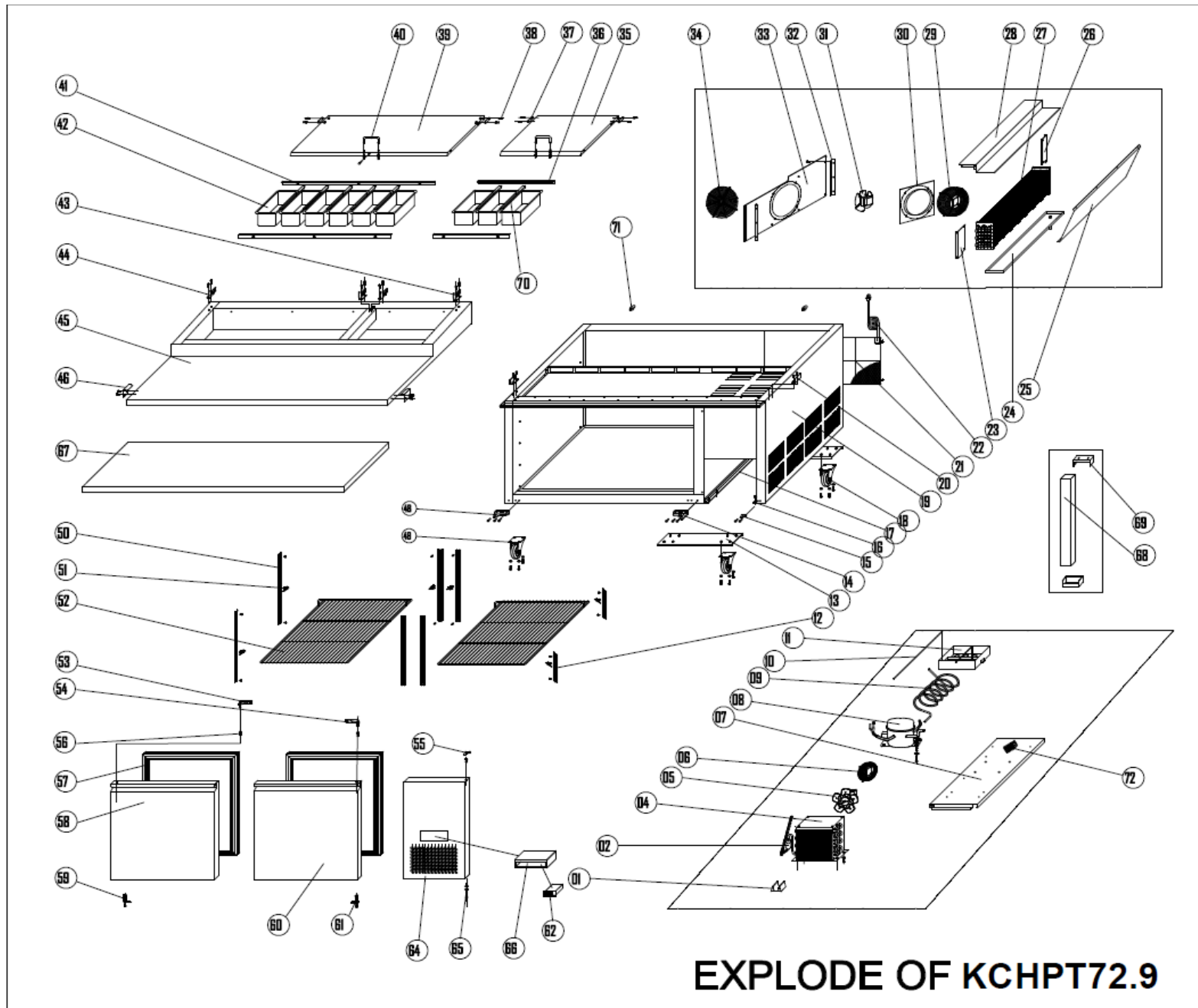
**Model:** KCHPT72.9

**PNC:** 738253

**REV:** 5/30/2025

NO	DESCRIPTION	Serial #	QTY	COMPONENT PNC	Model Number	Model PNC
1	DRIER SUPPORT	ALL	1PC	0USI78	KCHPT72.9	738253
2	FILTER DRIER	ALL	1PC	0USG66	KCHPT72.9	738253
3	CAPILLARY	ALL	1PC	0USM13	KCHPT72.9	738253
4	CONDENSER	ALL	1PC	0USF34	KCHPT72.9	738253
5	CONDENSER FAN	ALL	1PC	0USF15	KCHPT72.9	738253
5a	CONDENSER FAN BLADE	ALL	1PC	0USC4J	KCHPT72.9	738253
6	BASKET GUARD GRILLS	ALL	1PC	0USDIJ	KCHPT72.9	738253
7	UNIT BOARD	ALL	1PC	0USJ91	KCHPT72.9	738253
8	COMPRESSOR	ALL	1PC	0USF28	KCHPT72.9	738253
8a	COMPRESSOR ELECTRICAL COMPONENT SET	ALL	1PC	0USDF5	KCHPT72.9	738253
9	SUCTION PIPE	ALL	1PC	0USJ46	KCHPT72.9	738253
10	EVAPORATE PIPE	ALL	1PC	0USG15	KCHPT72.9	738253
11	WATER BOX	ALL	1PC	0USI35	KCHPT72.9	738253
12	SHELF SUPPORT A /SHORT	ALL	2PCS	0USI44	KCHPT72.9	738253
12a	Shelf Support Screw	ALL	6PCS	0USM14	KCHPT72.9	738253
13	SUPPORT OF UNIT BOARD	ALL	2PCS	0USJ87	KCHPT72.9	738253
14	DOOR HINGE/RIGHT	ALL	1PC	0USJ82	KCHPT72.9	738253
15	FRONT PANEL HINGE/DOWN	ALL	1PC	0USG86	KCHPT72.9	738253
16	RIGHT GUIDE OF UNIT BOARD	ALL	1PC	0USJ89	KCHPT72.9	738253
17	LEFT GUIDE OF UNIT BOARD	ALL	1PC	0USJ88	KCHPT72.9	738253
18	NORMAL WHEEL	ALL	2PCS	0USH64	KCHPT72.9	738253
19	BODY	ALL	1PC	N/A	KCHPT72.9	738253
20	TOP CLIP	ALL	2PCS	0USL80	KCHPT72.9	738253
21	UNIT ROOM COVER	ALL	1PC	0USI11	KCHPT72.9	738253
22	PLUG	ALL	1PC	0USH67	KCHPT72.9	738253
23	EVAPORATOR FIXED CLIP/ FRONT	ALL	1PC	0USJ96	KCHPT72.9	738253
24	EVAPORATOR WATER PAN	ALL	1PC	0USG56	KCHPT72.9	738253
24a	DRAIN PIPE(A INT)	ALL	1PC	096263	KCHPT72.9	738253
24b	DRAIN PIPE(B EXT)	ALL	1PC	0USG04	KCHPT72.9	738253
25	AIR FLOW CONDUCT BOARD	ALL	1PC	0USJ92	KCHPT72.9	738253
26	EVAPORATOR FIXED CLIP /BACK	ALL	1PC	0USJ95	KCHPT72.9	738253
27	EVAPORATOR	ALL	1PC	0USG31	KCHPT72.9	738253
27a	Evaporator Temperature Sensor Probe	ALL	1PC	0USC6R	KCHPT72.9	738253
28	EVAPORATOR COVER	ALL	1PC	0USL21	KCHPT72.9	738253
29	EVAPORATOR FAN GRILL	ALL	1PC	0USI25	KCHPT72.9	738253
30	CIRCLE FAN SUPPORT	ALL	1PC	0USJ93	KCHPT72.9	738253
31	CIRCLE FAN	ALL	1PC	0USF15	KCHPT72.9	738253
31a	EVAPORATOR FAN BLADE	ALL	1PC	0USI52	KCHPT72.9	738253
32	FIXED SUPPORT OF FAN COVER	ALL	2PCS	0USJ94	KCHPT72.9	738253
33	FAN COVER	ALL	1PC	0USJ90	KCHPT72.9	738253
34	FAN GRILL	ALL	1PC	0USG63	KCHPT72.9	738253
35	RIGHT COVER	ALL	1PC	0USN07	KCHPT72.9	738253
36	SHORT SUPPORT OF STANDARD PAN	ALL	2PCS	0USH75	KCHPT72.9	738253
37	STRENGTHENING BOARD	ALL	4PCS	0USH76	KCHPT72.9	738253
38	COVER HINGE AXIS	ALL	8PCS	0USF47	KCHPT72.9	738253
39	LEFT COVER	ALL	1PC	0USF43	KCHPT72.9	738253
40	HANDLE OF COVER	ALL	2PCS	0USH09	KCHPT72.9	738253
41	LONG SUPPORT OF STANDARD PAN	ALL	2PCS	0USH52	KCHPT72.9	738253
42	STANDARD PAN	ALL	9PCS	N/A	KCHPT72.9	738253

43	COVER HINGE / RIGHT	ALL	2PCS	<a href="#">0USF46</a>	KCHPT72.9	738253
44	COVER HINGE / LEFT	ALL	2PCS	<a href="#">0USF45</a>	KCHPT72.9	738253
45	TOP	ALL	1PC	<a href="#">0USF44</a>	KCHPT72.9	738253
46	FIXED CLIP OF CUTTING BOARD	ALL	2PCS	<a href="#">0USG68</a>	KCHPT72.9	738253
47	FIXED BOARD OF WHEEL	ALL	1PC	<a href="#">0USL63</a>	KCHPT72.9	738253
48	DOOR HINGE/LEFT	ALL	1PC	<a href="#">0USF80</a>	KCHPT72.9	738253
49	BRAKE WHEEL	ALL	2PCS	<a href="#">0USF04</a>	KCHPT72.9	738253
49a	Castor Mounting Bolt (4-PACK)	ALL	4PC	<a href="#">0USC2T</a>	KCHPT72.9	738253
49b	Castor Mounting Locking Washer (4-PACK)	ALL	4PC	<a href="#">0USC2Z</a>	KCHPT72.9	738253
49c	Castor Mounting Flat Washer (4-PACK)	ALL	4PC	<a href="#">0USC2Y</a>	KCHPT72.9	738253
50	SHELF SUPPORT/LONG	ALL	6PCS	<a href="#">0USI43</a>	KCHPT72.9	738253
50a	Shelf Support Screw	ALL	24PCS	<a href="#">0USM14</a>	KCHPT72.9	738253
51	K SHAPE CLIP	ALL	8PCS	<a href="#">0USH19</a>	KCHPT72.9	738253
52	SHELF	ALL	2PCS	<a href="#">0USCON</a>	KCHPT72.9	738253
53	UP HINGE/LEFT	ALL	1PC	<a href="#">0USI16</a>	KCHPT72.9	738253
54	UP HINGE/RIGHT	ALL	1PC	<a href="#">0USI17</a>	KCHPT72.9	738253
55	FRONT PANEL HINGE/UP	ALL	1PC	<a href="#">0USG87</a>	KCHPT72.9	738253
56	BUSHING	ALL	4PCS	<a href="#">096268</a>	KCHPT72.9	738253
57	GASKET	ALL	2PCS	<a href="#">0USJ42</a>	KCHPT72.9	738253
58	LEFT DOOR	ALL	1PC	<a href="#">0USJ52</a>	KCHPT72.9	738253
59	DOOR SPRING HINGE/ LEFT	ALL	1PC	<a href="#">0USF83</a>	KCHPT72.9	738253
60	RIGHT DOOR	ALL	1PC	<a href="#">0USJ53</a>	KCHPT72.9	738253
61	DOOR SPRING HINGE/ RIGHT	ALL	1PC	<a href="#">0USJ44</a>	KCHPT72.9	738253
62	TEMPERATURE CONTROLLER	<01021141	1PC	<a href="#">0USF42</a>	KCHPT72.9	738253
		≥01021141	1PC	<a href="#">0USDET</a>	KCHPT72.9	738253
62a	Inner Chest Temperature Sensor Probe	ALL	1PC	<a href="#">0USC4C</a>	KCHPT72.9	738253
62b	SENSOR FIXED CLIP	ALL	1PC	<a href="#">0USM10</a>	KCHPT72.9	738253
64	FRONT PANEL	ALL	1PC	<a href="#">0USG80</a>	KCHPT72.9	738253
65	DOWN HINGE AXIS	ALL	2PCS	<a href="#">0USF95</a>	KCHPT72.9	738253
66	THERMOSTAT PROTECTIVE BOX	ALL	1PC	<a href="#">0USJ43</a>	KCHPT72.9	738253
66a	THERMOSTAT PROTECTIVE BOX COVER	ALL	1PC	<a href="#">0USM89</a>	KCHPT72.9	738253
67	CUTTING BOARD	ALL	1PC	<a href="#">0USJ37</a>	KCHPT72.9	738253
68	MIDDLE GIRDER	ALL	1PC	<a href="#">0USN17</a>	KCHPT72.9	738253
69	MIDDLE GIRDER FIXER	ALL	2PCS	<a href="#">0USL15</a>	KCHPT72.9	738253
70	PAN SUPPORT	ALL	7PCS	<a href="#">0USC2P</a>	KCHPT72.9	738253
71	LOCATION KNOB	ALL	2PCS	<a href="#">0USH46</a>	KCHPT72.9	738253
72	CABLE CONNECTOR	ALL	1PC	<a href="#">0USF09</a>	KCHPT72.9	738253



**EXPLODE OF KCHPT72.9**