



Model: KCHPT92.12

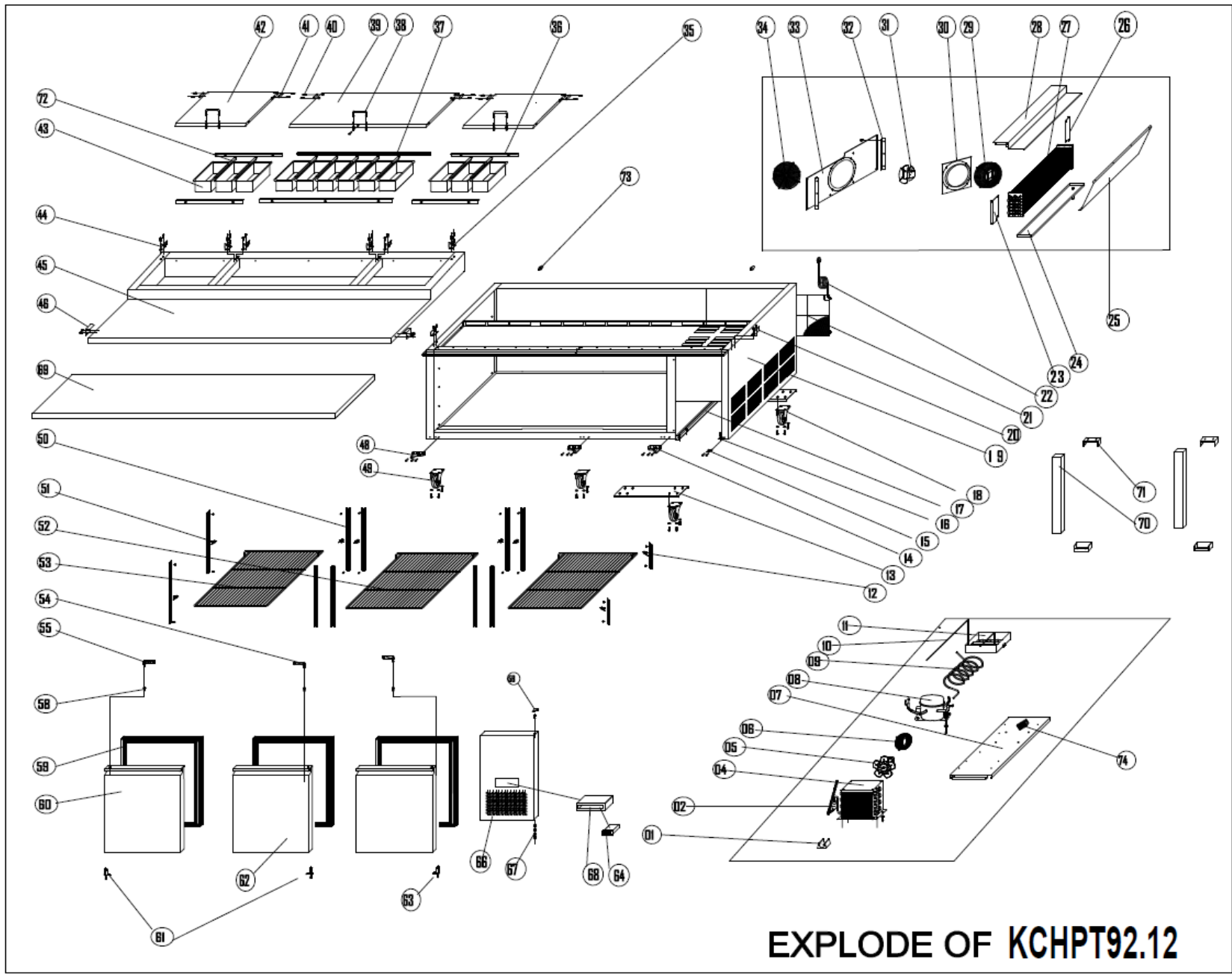
PNC: 738254

REV: 5/30/2025

Spare Parts List

NO	DESCRIPTION	Serial #	QTY	COMPONENT PNC	Model Number	Model PNC
1	DRIER SUPPORT	ALL	1PC	0USI78	KCHPT92.12	738254
2	FILTER DRIER	ALL	1PC	0USG66	KCHPT92.12	738254
3	CAPILLARY	ALL	1PC	0USN20	KCHPT92.12	738254
4	CONDENSER	<04620295	1PC	0USF34	KCHPT92.12	738254
		≥04620295	1PC	0USO56	KCHPT92.12	738254
5	CONDENSER FAN	ALL	1PC	0USF15	KCHPT92.12	738254
5a	CONDENSER FAN BLADE	ALL	1PC	0USC4J	KCHPT92.12	738254
6	BASKET GUARD GRILLS	<04620295	1PC	0USDIJ	KCHPT92.12	738254
		≥04620295	1PC	0USDCI	KCHPT92.12	738254
7	UNIT BOARD	ALL	1PC	0USJ91	KCHPT92.12	738254
8	COMPRESSOR	ALL	1PC	0USF22	KCHPT92.12	738254
8a	COMPRESSOR ELECTRICAL COMPONENT SET	ALL	1PC	0USDEZ	KCHPT92.12	738254
9	SUCTION PIPE	ALL	1PC	0USH82	KCHPT92.12	738254
10	EVAPORATE PIPE	ALL	1PC	0USN21	KCHPT92.12	738254
11	WATER BOX	ALL	1PC	0USI35	KCHPT92.12	738254
12	SHELF SUPPORT A /SHORT	ALL	2PCS	0USI44	KCHPT92.12	738254
12a	Shelf Support Screw	ALL	6PCS	0USM14	KCHPT92.12	738254
13	SUPPORT OF UNIT BOARD	ALL	2PCS	0USJ87	KCHPT92.12	738254
14	DOOR HINGE /RIGHT	ALL	2PCS	0USF81	KCHPT92.12	738254
15	FRONT PANEL HINGE/DOWN	ALL	1PC	0USG86	KCHPT92.12	738254
16	RIGHT GUIDE OF UNIT BOARD	ALL	1PC	0USJ89	KCHPT92.12	738254
17	LEFT GUIDE OF UNIT BOARD	ALL	1PC	0USJ88	KCHPT92.12	738254
18	NORMAL WHEEL	ALL	3PCS	0USH64	KCHPT92.12	738254
19	BODY	ALL	1PC	N/A	KCHPT92.12	738254
20	TOP CLIP	ALL	2PCS	0USL80	KCHPT92.12	738254
21	UNIT ROOM COVER	ALL	1PC	0USI11	KCHPT92.12	738254
22	PLUG	ALL	1PC	0USH67	KCHPT92.12	738254
23	EVAPORATOR FIXED CLIP /FRONT	ALL	1PC	0USJ96	KCHPT92.12	738254
24	EVAPORATOR WATER PAN	ALL	1PC	0USG56	KCHPT92.12	738254
24a	DRAIN PIPE(A INT)	ALL	1PC	096263	KCHPT92.12	738254
24b	DRAIN PIPE(B EXT)	ALL	1PC	0USG04	KCHPT92.12	738254
25	AIR FLOW CONDUCT BOARD	ALL	1PC	0USJ92	KCHPT92.12	738254
26	EVAPORATOR FIXED CLIP/BACK	ALL	1PC	0USJ95	KCHPT92.12	738254
27	EVAPORATOR	ALL	1PC	0USG31	KCHPT92.12	738254
27a	Evaporator Temperature Sensor Probe	ALL	1PC	0USC6R	KCHPT92.12	738254
28	EVAPORATOR COVER	ALL	1PC	0USL21	KCHPT92.12	738254
29	EVAPORATOR FAN GRILL	ALL	1PC	0USI25	KCHPT92.12	738254
30	CIRCLE FAN SUPPORT	ALL	1PC	0USJ93	KCHPT92.12	738254
31	CIRCLE FAN	ALL	1PC	0USF15	KCHPT92.12	738254
31a	EVAPORATOR FAN BLADE	ALL	1PC	0USI52	KCHPT92.12	738254
32	FIXED SUPPORT OF FAN COVER	ALL	2PCS	0USJ94	KCHPT92.12	738254
33	FAN COVER	ALL	1PC	0USJ90	KCHPT92.12	738254
34	FAN GRILL	ALL	1PC	0USG63	KCHPT92.12	738254
35	COVER HINGE /RIGHT	ALL	3PCS	0USF46	KCHPT92.12	738254
36	SHORT SUPPORT OF STANDARD PAN	ALL	4PCS	0USH75	KCHPT92.12	738254
37	LONG SUPPORT OF STANDARD PAN	ALL	2PCS	0USH52	KCHPT92.12	738254
38	HANDLE OF COVER	ALL	3PCS	0USH09	KCHPT92.12	738254
39	COVER /MIDDLE	ALL	1PC	0USF43	KCHPT92.12	738254

40	COVER HINGE AXIS	ALL	12PCS	0USF47	KCHPT92.12	738254
41	STRENGTHENING BOARD	ALL	6PCS	0USH76	KCHPT92.12	738254
42	COVER /RIGHT /LEFT	ALL	2PCS	0USN07	KCHPT92.12	738254
43	STANDARD PAN	ALL	12PCS	N/A	KCHPT92.12	738254
44	COVER HINGE /LEFT	ALL	3PCS	0USF45	KCHPT92.12	738254
45	TOP	ALL	1PC	0USH99	KCHPT92.12	738254
46	FIXED CLIP OF CUTTING BOARD	ALL	2PCS	0USG68	KCHPT92.12	738254
47	FIXED BOARD OF WHEEL	ALL	2PCS	0USL63	KCHPT92.12	738254
48	DOOR HINGE /LEFT	ALL	1PC	0USF80	KCHPT92.12	738254
49	BRAKE WHEEL	ALL	3PCS	0USF04	KCHPT92.12	738254
49a	Castor Mounting Bolt (4-PACK)	ALL	6PC	0USC2T	KCHPT92.12	738254
49b	Castor Mounting Locking Washer (4-PACK)	ALL	6PC	0USC2Z	KCHPT92.12	738254
49c	Castor Mounting Flat Washer (4-PACK)	ALL	6PC	0USC2Y	KCHPT92.12	738254
50	SHELF SUPPORT /LONG	ALL	10PCS	0USI43	KCHPT92.12	738254
50a	Shelf Support Screw	ALL	40PCS	0USM14	KCHPT92.12	738254
51	K SHAPE CLIP	ALL	12PCS	0USH19	KCHPT92.12	738254
52	SHELF / MIDDLE	ALL	1PC	0USC00	KCHPT92.12	738254
53	SHELF LEFT /RIGHT	ALL	2PCS	0USCOP	KCHPT92.12	738254
54	UP HINGE /RIGHT	ALL	2PCS	0USI17	KCHPT92.12	738254
55	UP HINGE /LEFT	ALL	1PC	0USI16	KCHPT92.12	738254
56	FRONT PANEL HINGE/UP	ALL	1PC	0USG87	KCHPT92.12	738254
58	BUSHING	ALL	5PCS	096268	KCHPT92.12	738254
59	GASKET	ALL	3PCS	0USG96	KCHPT92.12	738254
60	LEFT DOOR	ALL	1PC	0USH43	KCHPT92.12	738254
61	LEFT DOOR SPRING HINGE	ALL	2PCS	0USF83	KCHPT92.12	738254
62	RIGHT DOOR	ALL	2PCS	0USH72	KCHPT92.12	738254
63	RIGHT DOOR SPRING HINGE	ALL	1PC	0USJ44	KCHPT92.12	738254
64	TEMPERATURE CONTROLLER	<00521013	1PC	0USF42	KCHPT92.12	738254
		≥00521013	1PC	0USDET	KCHPT92.12	738254
64a	Inner Chest Temperature Sensor Probe	ALL	1PC	0USC4C	KCHPT92.12	738254
64b	SENSOR FIXED CLIP	ALL	1PC	0USM10	KCHPT92.12	738254
66	FRONT PANEL	ALL	1PC	0USG80	KCHPT92.12	738254
67	DOWN HINGE AXIS	ALL	2PCS	0USF95	KCHPT92.12	738254
68	THERMOSTAT PROTECTIVE BOX	ALL	1PC	0USJ43	KCHPT92.12	738254
68a	THERMOSTAT PROTECTIVE BOX COVER	ALL	1PC	0USM89	KCHPT92.12	738254
69	CUTTING BOARD	ALL	1PC	0USF51	KCHPT92.12	738254
70	MIDDLE GIRDER	ALL	2PCS	0USN17	KCHPT92.12	738254
71	MIDDLE GIRDER FIXER	ALL	4PCS	0USL15	KCHPT92.12	738254
72	PAN SUPPORT	ALL	9PCS	0USC2P	KCHPT92.12	738254
73	LOCATION KNOB	ALL	2PCS	0USH46	KCHPT92.12	738254
74	CABLE CONNECTOR	ALL	1PC	0USF09	KCHPT92.12	738254



EXPLODE OF KCHPT92.12