



Kelvinator 

Factory Parts Catalog

Product No.	KCPT92-12
Series	Pizza Table
Color	stainless steel
Volts	115
Market	North America

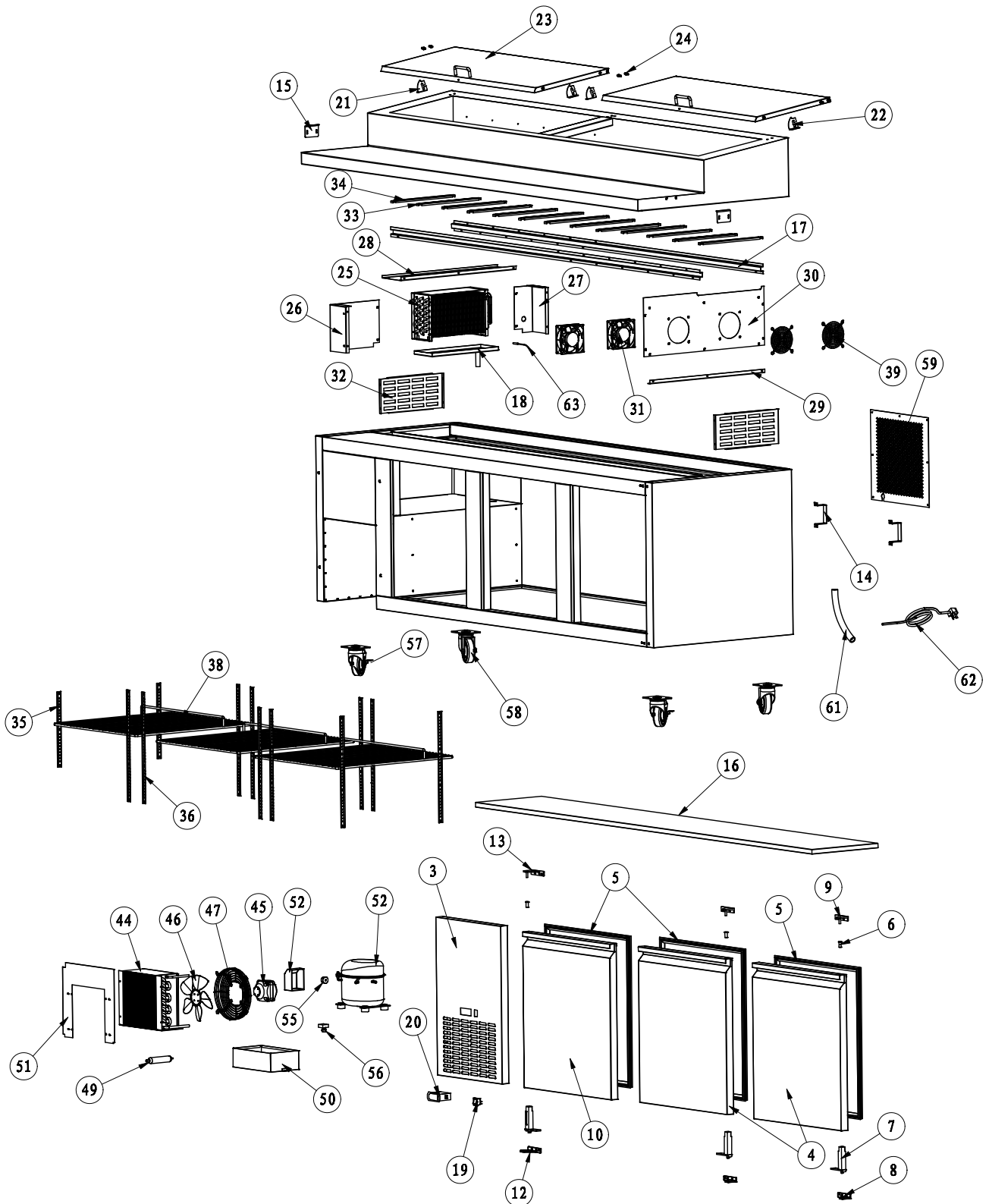
This Catalog replaces 5995621439

Publication No.
5995650107
14/08/20
(EN/SERVICE/KC)
099

PIZZA PREP TABLE

Model No.
KCPT92

RECOMMENDED SPARE PARTS



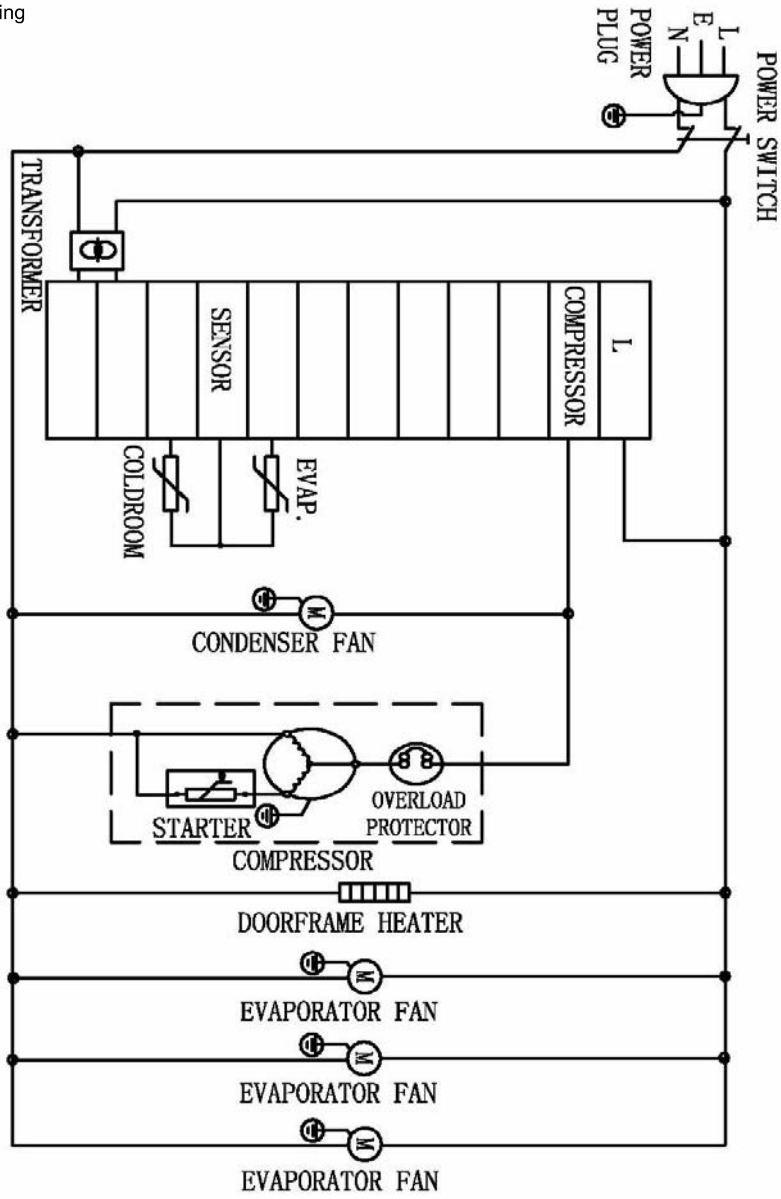
KCPT92-12A-Spares

RECOMMENDED SPARE PARTS

POS. NO	PART NO.	DESCRIPTION
3	5304493462	Cover, condenser, control panel
4	5304493503	Door, middle/right
5 #	5304493504	Gasket, door seal
6	5304493360	Hinge Pin, door, upper
7	5304492217	Door Closer, hinge spring
8	5304493361	Hinge, door, bottom right
9	5304493362	Hinge, door, upper right
10	5304493505	Door, left
12	5304493409	Hinge, door, bottom left
13	5304493410	Hinge, door, top left
14	5304493382	Bracket, stand off
15	5304493363	Bracket, cutting board
16	5304493506	Board, cutting
17	5304493507	Rail, pan
18	5304493508	Pan, defrost drain, evaporator
19 #	5304492248	Switch, power
20 #	5304496527	Controller, temp, (Juchuang)
20 #	5304492240	Controller, temp, (Carel)
21	5304493469	Hinge, top lid, left
22	5304493470	Hinge, top lid, right
23	5304493509	Lid
24	5304493473	Hinge Pin, lid
25 #	5304493510	Evaporator
26	5304493511	Support, evap cover, left side
27	5304493476	Support, evap cover, right side
28	5304493477	Support, evap cover, upper
29	5304493478	Support, evap cover, bottom
30	5304493512	Panel, fan mount
31 #	5304493513	Fan Assy, evaporator, with motor
32	5304493480	Grille, inner
33	5304493481	Bracket, end pan, 25 mm wide
34	5304493482	Bracket, end pan, 15 mm wide
35	5304493397	Pilaster, shelf mount, 3 screw
36	5304493483	Pilaster, shelf mount, 4 screw
38	5304493514	Shelf
39	5304493515	Grille, fan cover, evaporator
44 #	5304492270	Condenser
45 #	5304492359	Motor, condenser fan
46 #	5304492273	Fan Blade, condenser fan
47	5304492272	Cover, condenser fan
49 #	5304492275	Filter-drier
50	5304493296	Pan, drain, condensate
51	5304493501	Frame, air baffle, condenser
52 #	5304493028	Compressor, w/terminal box
55 #	5304493068	Overload
56 #	5304493067	Relay/Starter
57	5304492261	Caster, 4 inch diameter, locking
58	5304492262	Caster, 4 inch diameter
59	5304493502	Panel, svce access, rear grille
61 #	5304493401	Tube, drain, 16 mm dia
62 #	5304492267	Power Cord, electric, 115 V
63 #	5304492340	Probe, temp controller

WIRING DIAGRAM

KCPT92.12 Wiring



CIRCUIT DIAGRAM

MODEL : PICL3
TECHNIC PARAMETER

DESIGNED PRESSURE	
HIGH SIDE	358PSI
LOW SIDE	190PSI
REFRIGERANT	R134a
AMOUNT	550g
FOAM AGENT	141b
RATED VOLTAGE	AC115V
FREQUENCY	60Hz
RATED CURRENT	10.5A
NET WEIGHT	200Kg
MANUFACTURED	