



Kelvinator 

Factory Parts Catalog

Product No.	KCST48-12
Series	salad table
Color	stainless steel
Volts	115
Market	North America

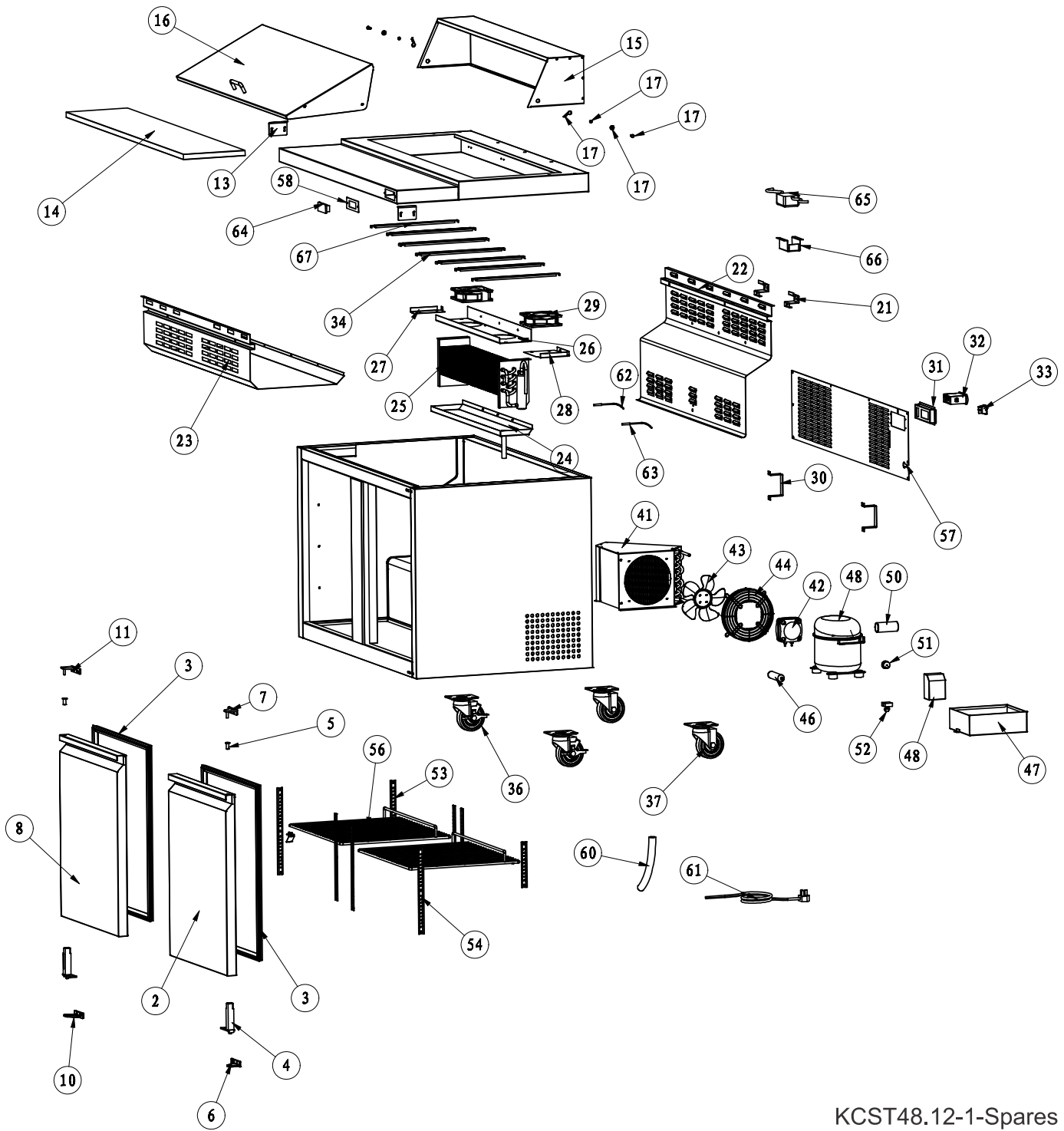
This Catalog replaces 5995624532

Publication No.
5995650404
14/08/26
(EN/SERVICE/KC)
099

**SALAD/SANDWICH
PREP TABLE**

Model No.
KCST48

RECOMMENDED SPARE PARTS



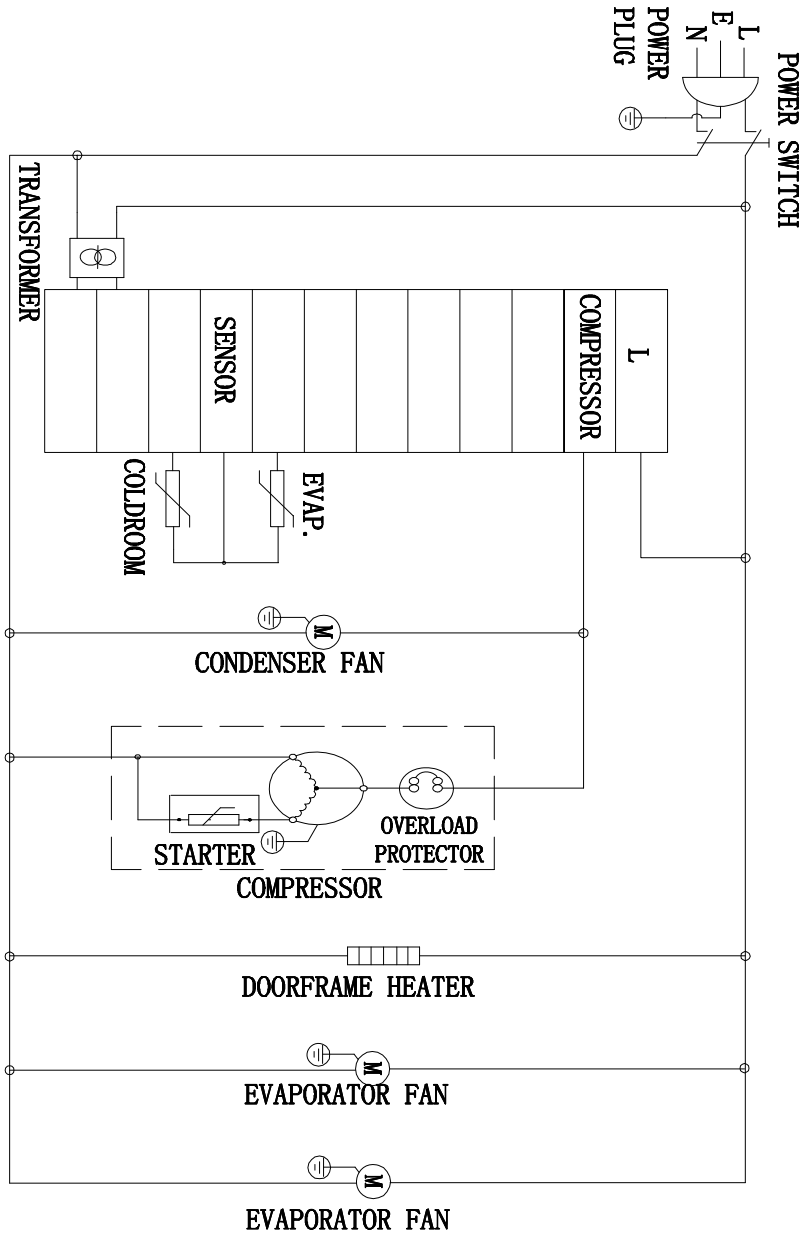
KCST48.12-1-Spares

RECOMMENDED SPARE PARTS

POS. NO	PART NO.	DESCRIPTION
2	5304493406	Door, right side
3 #	5304493407	Gasket, door seal
4	5304492217	Door Closer, hinge spring
5	5304493360	Hinge Pin, door, upper
6	5304493361	Hinge, door, bottom right
7	5304493362	Hinge, door, upper right
8	5304493408	Door, left side
10	5304493409	Hinge, door, bottom left
11	5304493410	Hinge, door, top left
13	5304493363	Bracket, cutting board
14	5304493411	Board, cutting
15	5304493499	Hood, lid
16	5304493414	Lid
17	5304493386	Hinge Kit, hood
21	5304493368	Support, air vent
22	5304493417	Cover, evaporator
23	5304493420	Cover, air return
24	5304493425	Pan, defrost drain, evaporator
25 #	5304493426	Evaporator
26	5304493427	Panel, fan motor mount
27	5304493429	Support, evaporator, left side
28	5304493431	Support, evaporator, right side
29 #	5304492231	Fan Assy, evaporator, with motor
30	5304493382	Bracket, stand off
31	5304493383	Control Box
32 #	5304496527	Controller, temp, (Juchuang)
32 #	5304492240	Controller, temp, (Carel)
33 #	5304492248	Switch, power
34	5304493451	Bracket, end pan, 25 mm wide
36	5304492261	Caster, 4 inch diameter, locking
37	5304492262	Caster, 4 inch diameter
41 #	5304493455	Condenser
42 #	5304492359	Motor, condenser fan
43 #	5304493456	Fan Blade, condenser fan
44	5304493105	Grille, fan cover, condenser
46 #	5304493106	Filter-drier
47	5304493457	Pan, drain, condensate
48 #	5304493171	Compressor
50 #	5304493032	Capacitor, start
51 #	5304493174	Overload
52 #	5304493173	Relay/Starter
53	5304493396	Pilaster, shelf mount, 2 screw
54	5304493397	Pilaster, shelf mount, 3 screw
56	5304493458	Shelf
57	5304493459	Panel, service access, rear
58	5304493400	Plate, temp display
60 #	5304493401	Tube, drain, 16 mm dia
61 #	5304493100	Power Cord, electric, 115 V
62 #	5304492340	Probe, temp controller
63 #	5304493402	Probe, temp display, Fahrenheit
64 #	5304493083	Display, temperature, Fahrenheit
65 #	5304493077	Transformer, temp display
66	5304493403	Bracket, transformer
67	5304493460	Bracket, end pan, 15/90 mm wide

WIRING DIAGRAM

CIRCUIT DIAGRAM



MODEL : KCST48. 12
TECHNIC PARAMETER

DESIGNED PRESSURE	
HIGH SIDE	358PSI
LOW SIDE	190PSI
REFRIGERANT	R134a
AMOUNT	350g
FOAM AGENT	141b
RATED VOLTAGE	AC115V
FREQUENCY	60Hz
RATED CURRENT	7.8A
NET WEIGHT	115Kg
MANUFACTURED	