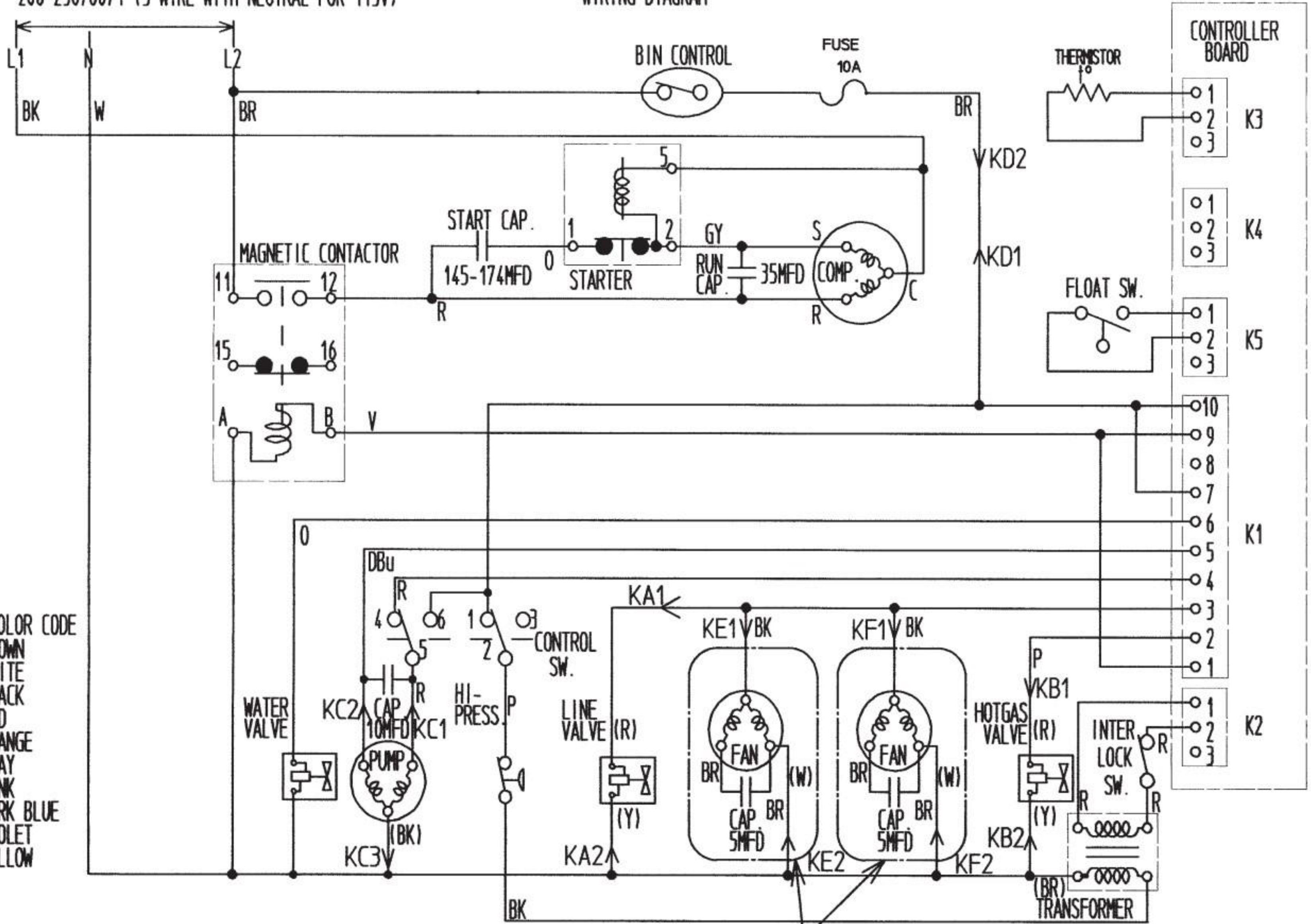


208-230/60/1 (3 WIRE WITH NEUTRAL FOR 115V)

WIRING DIAGRAM



- WIRE COLOR CODE
 BR - BROWN
 W - WHITE
 BK - BLACK
 R - RED
 O - ORANGE
 GY - GRAY
 P - PINK
 DBu - DARK BLUE
 V - VIOLET
 Y - YELLOW

ONLY AIR COOLED MODEL

