

Model 820 & 830 Tea-Master II Iced Tea Dispenser



MODEL 820



MODEL 830

SPECIFICATIONS

Electrical:	Model 820 - 120 V., 60 Hz., 11 Watts; Model 830 - 120 V., 60 Hz., 22 Watts
Plumbing:	1/4" O.D. flared flexible tubing tapped from 1/4" O.D. or larger cold waterline. Minimum 25 psi waterline pressure required.
Dimensions:	Model 820 - 7 1/2" W x 10 1/2" D x 17 1/2" H; Model 830 - 7 1/2" W x 17" D x 17 1/2" H.
Shipping Weight:	Model 820 - 14 Pounds; Model 830 - 20 pounds
Agency Listing:	NSF Approved, Standard 18; U.L. File E68652 CSA APPROVED

DO NOT ATTEMPT TO FIX OR REPLACE INTERNAL COMPONENTS WITHOUT UNPLUGGING ELECTRIC SUPPLY CORD AND TURNING OFF WATER SUPPLY.

INTRODUCTION

The Tea Master II, the most popular and versatile Karma post-mix dispenser, is available in two designs; the Model 820, single flavor and the Model 830 double flavor. Both models are designed to handle a variety of concentrate beverage bases in addition to tea such as lemonade, fruit punch, apple, etc.

All units are designed to accommodate a variety of original concentrate shipping packages. The packaging may range from #21/2 tins to five gallon bag-in-box packs.

An optional dispensing head assembly is available for the Model 820 and 830 for use with concentrates containing pulp.

Producers of dependable dispensing equipment
for the food and beverage industries.



P.O. Box 433
500 Milford Sreet
Watertown, Wisconsin 53094
(414) 261-1424
(800) 558-9565

P/N 5406

INSTALLATION

A MINIMUM OF 25 PSI PRESSURE IS REQUIRED AT ALL TIMES TO MAINTAIN A CONSISTENT DRINK.

1. Open the dispenser door. Remove the drip tray and attach to the front of the door.
2. Flush the incoming waterline to remove any foreign particles.
3. Connect a 1/4" flared flexible waterline to the fitting at the back of the unit.

NOTE: • An in-line water shut off with easy access is recommended.

- A wide loop in the waterline just prior to connection will allow you to move the unit for cleaning.

4. Plug the electrical cord into a 120 volt A.C. 60 Hz grounded outlet.

LOADING PRODUCT

MODEL 820

1. Remove the cover from the concentrate container.
2. Open the dispenser door.
3. Place the stainless dip tube inside the concentrate container.
4. Slide the plastic cover down the dip tube and tighten to the concentrate container. Place the concentrate container inside the dispenser. Close the dispenser door.
5. Dispense an eight ounce drink to prime system.

MODEL 830

1. Front compartment - Follow steps 1-5 for the Model 820, using the dispensing head with the short hose.
2. Back compartment - Lift the hinged cover on the top of the dispenser.
3. Remove the dip tube from inside the cabinet.
4. Place the stainless dip tube inside the concentrate container.
5. Slide the plastic cover down the dip tube and tighten to the concentrate container.
6. Place the concentrate container inside the cabinet. Close the cover.
7. Dispense an eight ounce drink from each side to prime system

FINISHED DRINK STRENGTH

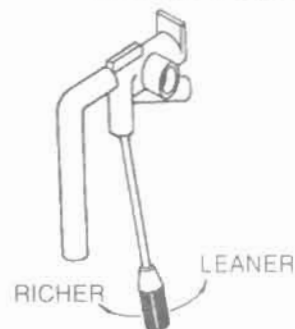
RICHER/LEANER ADJUSTMENT

The adjustment is made with the dispensing head attached to the dispenser and you standing in front of the dispenser.

The adjustment screw is located on the underside of the dispensing head. After an eight ounce drink has been dispensed to prime the system, adjust the adjustment screw for desired taste.

RICHER DRINK - CLOCKWISE (Screw Out)

LEANER DRINK - COUNTERCLOCKWISE (Screw In)



Note: If you are unable to get a rich enough drink, a regulator adjustment is necessary. (SEE PRESSURE REGULATOR)

CHATTERING SOUND

If there is a loud chattering sound when a serving is dispensed, the regular setting will have to be increased. (SEE PRESSURE REGULATOR)

PRESSURE REGULATOR

NOTE: This adjustment should be made by a qualified service technician. Your dispenser has been set for a regulated maximum pressure of 32 PSI static pressure. To increase the PSI setting, not the following procedure:

MODEL 820

1. Unplug the dispenser. Remove the top cover.
2. Push the "red locking ring" towards the back of the cabinet. This will free the black adjustment knob that it may be rotated.
3. Rotate the adjustment knob 3/4 turn clockwise. Replace the top cover. Plug in dispenser.
4. Push and release push pad four times to prime head. Sample drink for desired taste.
5. If desired taste is not obtained repeat the procedure.
6. When desired taste has been obtained, **UNPLUG THE DISPENSER**, push the "red locking ring" toward the front

- of the machine to the locked position.
7. Replace top cover.

MODEL 830

1. Unplug the dispenser.
2. Tilt the dispenser backwards. The regulator is located on the bottom of the unit.
3. Follow steps 2-6 for the Model 820.

CLEANING INSTRUCTIONS

DAILY OR WHENEVER RELOADING WITH CONCENTRATE:

1. Remove concentrate container. Leave dispense head and product tube on machine.
2. Replace the product container with a container of approximately six ounces of 140° minimum (hot) water.
3. Place a glass under dispenser spout. Depress push button switch and hold in until entire contents of container are flushed up product hose and through the dispense head.
4. Remove water container. Refill container with approximately six ounces of 100° (warm) water and one table-

spoon of a mild dishwashing soap such as Ivory Liquid or the equivalent. Follow step 3.

5. Repeat steps 2 and 3.
6. Reload the machine with concentrate. Place a glass under dispense spout. Depress push button switch and hold until the glass begins to fill with tea.

WEEKLY:

1. Remove concentrate container.
2. Remove dispenser head with product tube.
3. Hold dispense head with product tube upside down over sink until drained of any excess product.
4. Soak dispense head with product tube in a solution of very hot water, 140° minimum and two tablespoons of mild detergent, such as Ivory Liquid or the equivalent, for approximately 10 minutes.
5. Re-install dispense head onto machine. (Be sure to lower retaining bracket over dispense head prior to depressing push button switch.)
6. Flush by reloading the machine concentrate. Depress push button switch and hold until concentrate is primed to water. (Approximately two seconds.) Dispense three eight ounce portions of product and discard.

TROUBLESHOOTING GUIDE

PROBLEM	PROBABLE CAUSE	CORRECTIVE ACTION
Actuated switch - no water, no product.	<ol style="list-style-type: none"> 1. Unplugged machine. 2. Outlet dead in store. 3. Water supply not turned on. 4. Wires off. 5. Actuator arm not aligned with switch. 6. Defector switch. 7. Stuck diaphragm in water solenoid. 8. Defective valve. 	<ol style="list-style-type: none"> 1. Plug into outlet. 2. Check circuit breaker in store. 3. Turn water supply on. 4. Check for loose wires. 5. Position actuator arm to activate switch when arm is pushed. 6. Replace switch. 7. Remove coil gently and lift off bell and diaphragm. Run warm water over diaphragm and re-install. See page 3. 8. Replace valve.
Drink too foamy or bubbly.	<ol style="list-style-type: none"> 1. Product container low. 2. Leak in product or water line. 3. Worn "O" rings. 4. Dispensing assembly not on nozzle all the way. 5. Adjustment screw out too far. 	<ol style="list-style-type: none"> 1. Replenish product. 2. Check that all fittings are secure and that there are no holes in the tubing. 3. Replace "O" ring on nozzle and "O" ring on the adjustment screw. 4. Using palm of hand push head toward machine; slide wire form down over head. 5. Turn screw counterclockwise to turn screw into head.
Activated switch with push pad - water but no product.	<ol style="list-style-type: none"> 1. Product container empty. 2. Product hose clogged. 3. Check valve not seating. 4. Adjustment screw out too far. 	<ol style="list-style-type: none"> 1. Replenish product. 2. Clean product hose or replace. 3. Disassemble and clean check valve. Reassembly: see page 5. 4. Turn screw counterclockwise to turn screw into head.
Drink too weak or inconsistent.	<ol style="list-style-type: none"> 1. Product container low. 2. Adjustment screw not set properly. 3. Dispensing head clogged up producing inconsistent drink. 4. Water pressure too low on incoming waterline. 5. Pressure regulator set too low. 6. Check valve not seating properly, prime is being lost between drinks. 	<ol style="list-style-type: none"> 1. Replenish product. 2. See "Finished Drink Strength", page 2. 3. See "Cleaning of Dispensing Head Assembly" page 3. 4. Waterline should be separate from other equipment. 5. See "Pressure Regulator", page 2. 6. Disassemble and clean check valve. Reassembly: see page 5.

PROBLEM	PROBABLE CAUSE	CORRECTIVE ACTION
Difficulty priming.	1. Product adjustment screw turned in too far. 2. Pressure regulator set too low.	1. Turn adjustment screw clockwise (Richer/Leaner Adjustment). 2. Turn adjustment knob of regulator 1/2 turn counterclockwise. (Regulator Adjustment)
A chattering sound.	1. Pressure regulator set too low.	1. Re-adjust regulator. See Regulator Adjustment.

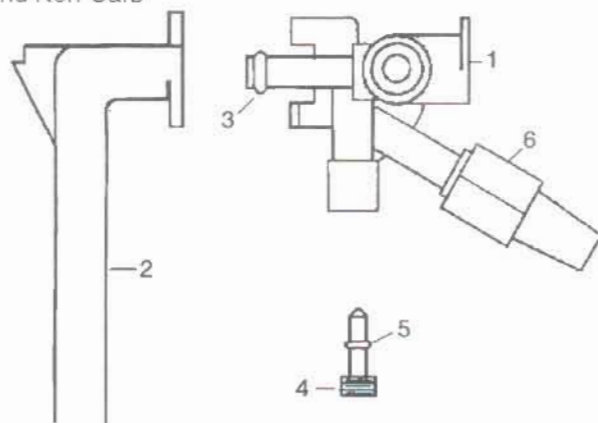
REPLACEMENT PARTS LISTS

Part No.	Description	Quantity in Unit	
		Model 820	Model 830

Part No.	Description	Quantity in Unit	
		Model 820	Model 830

DISPENSING PARTS

Tea and Non-Carb

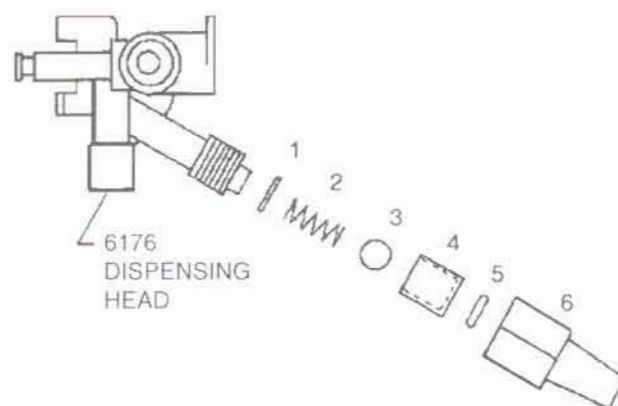


4444	Dispensing head assembly complete	1	2
6175	Dispensing head complete	1	2
1 6176	Dispensing head only	1	2
2 6177	Dispensing spout only	1	2
3 4211	O-ring	1	2
4 2929	Adjustment screw & O-ring assembly	1	2
5 2794	O-ring (adjust. screw)	1	2
6 6232	Check valve cplt.		
6042	Stainless dip tube	1	2
4442	18" silicone tubing	1	2
4443	Bottle cap	1	2

DECALS

3815	Decal (Iced Tea)		
1152	Decal (Fruit)		
6514	Decal (Sweetened/Unsweetened)		
6515	Flavor label (Apple - Grape - Orange - Citrus - Fruit Punch - Lemonade)		

INDIVIDUAL CHECK VALVE PARTS

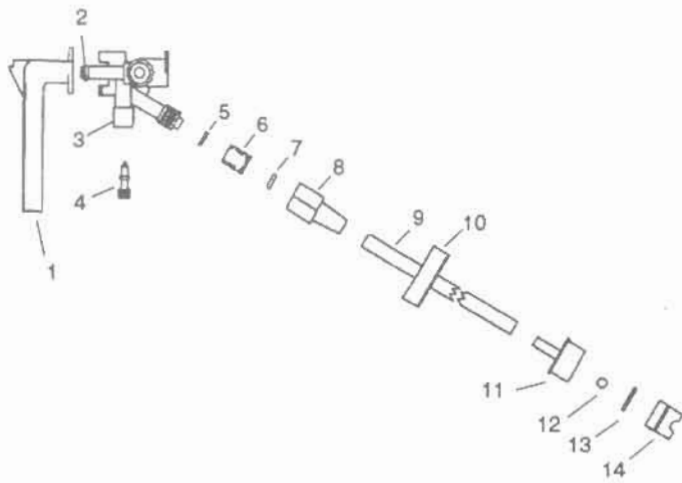


1 3343	O-ring	1	2
2 5508	Spring	1	2
3 5507	Ball	1	2
4 5506	Ball Sleeve	1	2
5 5505	O-ring	1	2
6 5504	Hex check valve body	1	2

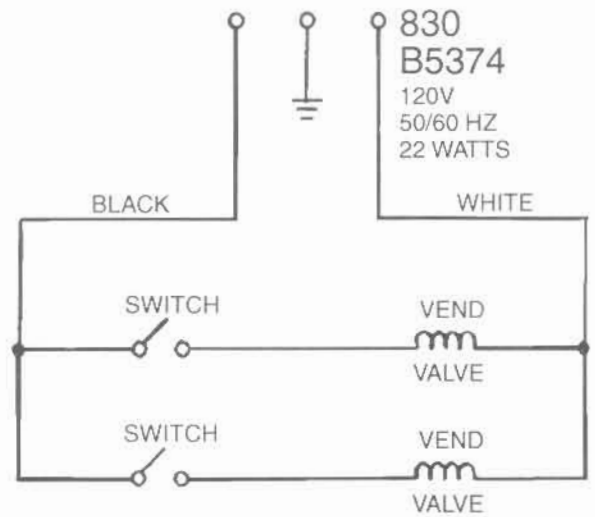
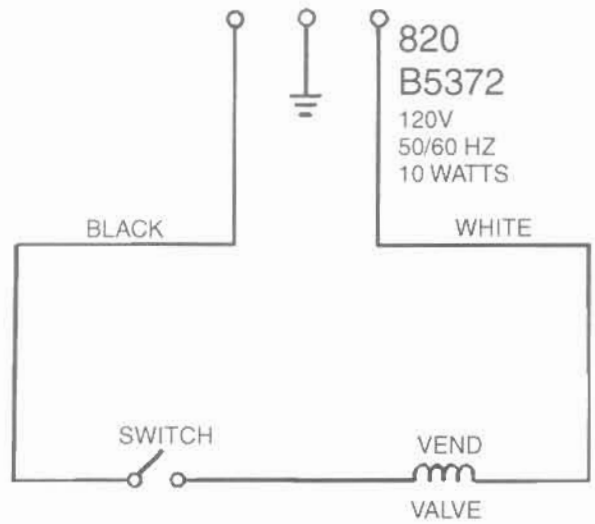
CABINET PARTS

4749	Door complete w/latch	1	-
4750	Door complete w/latch	-	1
5922	Door latch	1	1
4748	Door spring	1	1
3796	Push pad & actuator assembly	1	-
6012	Left & right push pad	-	2
6010	Retaining ring	-	2
3784	Cabinet cover	1	-
3944	Cabinet cover	-	1
3882	Cabinet cover (hinged)	-	1
2362	Drip tray	1	1
2501	Drip tray insert	1	1
2876	Suction feet	4	4

DISPENSING PARTS - JUICE

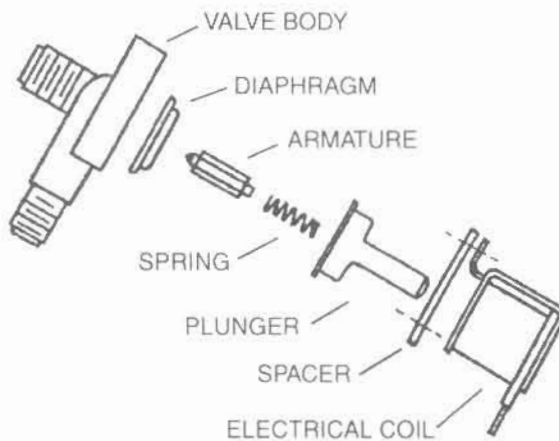


SCHEMATIC

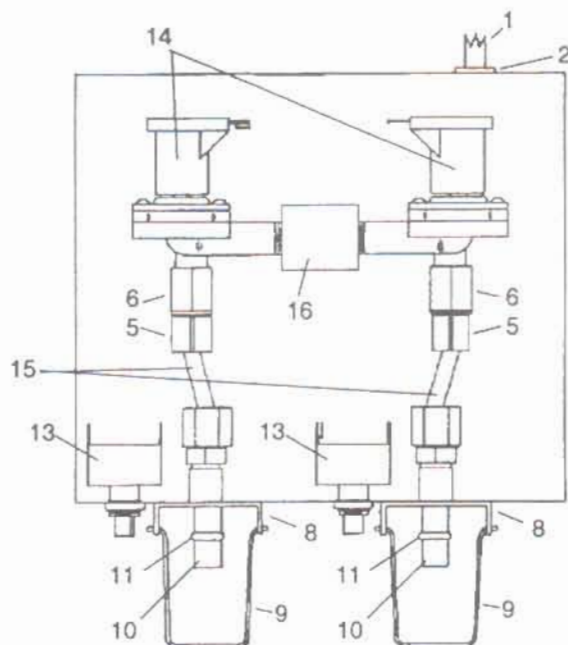
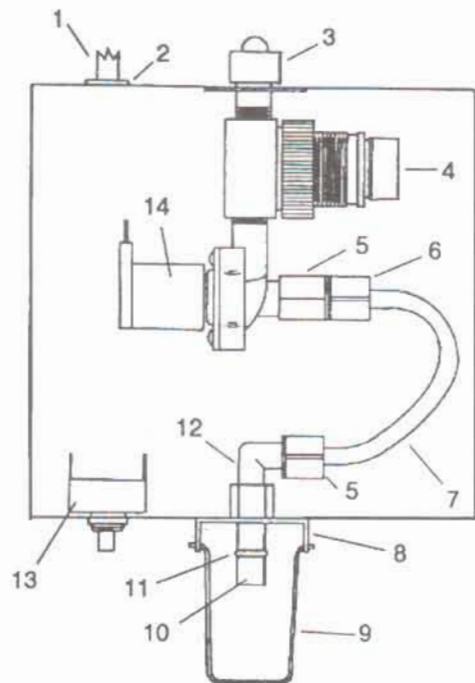


Part No.	Description	Quantity in Unit	
		Model 820	Model 830
	7416	Dispensing head assy. cplt., short hose	
	7417	Dispensing head assy. cplt., long hose	
1	6177	Spout	
2	4211	O-ring	
3	6176	Dispense head	
4	2929	Adjustment screw & O-ring	
5	3343	O-ring	
6	5506	Check valve ball sleeve	
7	5505	O-ring	
8	5504	Check valve body	
9	7418	Short tube	
	7419	Long tube	
10	3140	Bottle cap	
11	3753	Check valve connecting block	
12	5507	Check valve ball	
13	2906	O-ring	
14	7426	Check valve	

VALVE ASSEMBLY



2962	Valve complete
2841	Electrical coil only
1999	Diaphragm only
3305	Valve repair kit



Part No.	Description	Quantity in Unit	
		Model 820	Model 830
1	1109 Line Cord	1	1
2	1399 Strain relief (Heyco)	1	1
3	2905 Female elbow	1	-
4	2948 Pressure regulator	1	1
5	3043 Plastic nut	2	2
6	2850 Coupling (female connector)	1	2
7	3335 Waterline (nozzle to valve)	1	-
8	2881 Bracket (495 screw - 316 nut)	1	2
9	3791 Head retainer	1	2
10	4786 Nozzle (stainless)	1	2
11	1944 O-ring (nozzle)	1	2
12	2849 Male elbow	1	-
13	3769 Actuator switch	1	2
14	2962 Water solenoid valve	1	2
15	3928 Waterline (nozzle to valve)	-	2
16	3890 Valve mounting block	-	2

MISCELLANEOUS

3855	Inlet regulator assy.	1	-
3927	Inlet regulator assy.	-	1
6005	Nozzle & O-ring assy.	1	-
4003	Nozzle & O-ring assy.	-	2
3066	Elbow (inside product cab.)	-	1
3848	Waterline (elbow to regulator)	-	1
3065	Connector (waterline to regulator)	-	1
5406	Manual	1	1
3819	Carton	1	-
6075	Carton	-	1