



8" Center Wall Mount Faucet Installation Manual

12-8 Faucets

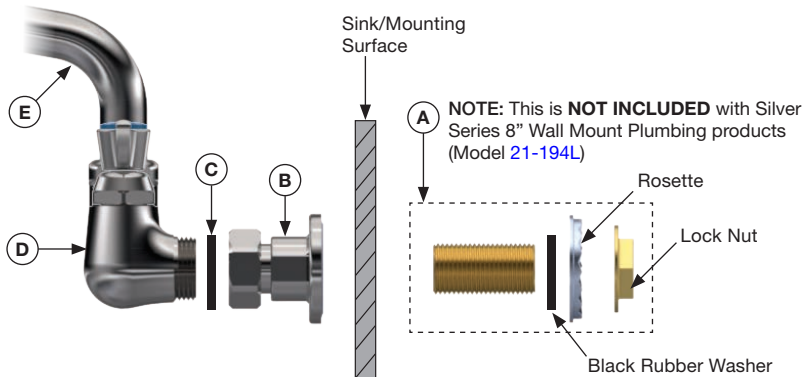


SILVER
SERIES



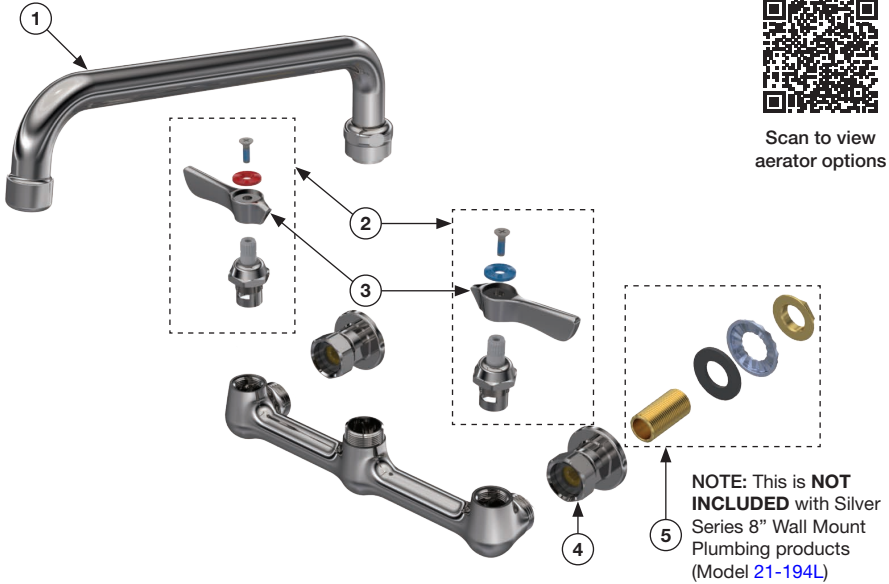
WARNING: Plumbing connections should be made by qualified personnel who will observe all applicable plumbing, sanitary and safety codes.

Note: Before starting installation, it is necessary to purchase a mounting kit. We recommend the Krowne's Mounting Kit for Wall Mount Faucets (model 21-194L). For a mounting kit with water lines, we recommend Krowne's E-Z Install Flexible Water Line Kit (model 21-445L). These kits do not use thread sealant tape or pipe joint compound. Kits come with 1/2" compression 90° fittings on one side and 3/8" compression fittings that secure directly onto the supply stops. These are available in 22", 24" and 30" lengths.



Installation Instructions

1. Turn off water supply at main source before proceeding with installation.
2. Remove the two 1/2" threaded nipples **(A)** from the wall mount kit (not included).
3. Apply thread sealant tape or pipe joint compound to one side of each of the two threaded nipples (you will apply to the other side after step #5 is completed).
4. Install the threaded nipples with the sealant into the two 1/2" female threaded coupling flanges **(B)** and tighten properly. It is important to know that the coupling flanges have eccentric centers. This means that if the holes for the threaded nipples are not exactly 8" on center, it allows you to adjust the center distance.
5. From the front of the sink, insert the threaded nipples into the faucet holes in the sink. Make sure the coupling flanges are turned so the brass nipples are at the 12 o'clock position. This is necessary to make sure the faucet is level.
6. Apply thread sealant tape or pipe joint compound to the other side of each of the two threaded nipples. This step is not necessary if you are using the Krowne E-Z install flexible water line kit, as these use compression fittings.
7. From the back of the sink, place the black rubber washer, rosette, and flange nut from the mounting kit onto the threaded nipples and tighten with a wrench.
8. From the front of the sink, insert the rubber washers **(C)** into the coupling flanges **(B)**.
9. Install the faucet body **(D)** onto the coupling flanges and tighten properly with a wrench. If the faucet does not fit on the coupling flanges, rotate the flanges to fit the faucet per step 5.
10. From the front of the sink, install the spout **(E)** and tighten properly.
11. From the back of the sink, install the water supply lines and tighten properly.



Parts Guide

No.	Model	Description
1	19-220L	6" Swing Spout
1	19-221L	8" Swing Spout
1	19-222L	10" Swing Spout
1	19-223L	12" Swing Spout
1	19-224L	14" Swing Spout

No.	Model	Description
1	19-225L	16" Swing Spout
1	19-226L	18" Jointed Spout
1	19-227L	3-1/2"W Gooseneck Spout
1	19-228L	6"W Gooseneck Spout
1	19-229L	8-1/2"W Gooseneck Spout

No.	Model	Description
2	21-300L	Silver Series 1/4 Turn Ceramic Valves (full hot & cold valves with handles)
3	21-305	Lever Handle Kit (hot & cold handles only)
4	21-400L	Coupling Flanges (includes 2 each)
5	21-194L	Wall Mounting Kit (includes 2 each: nipples, lock nut, rosette, washer)

Accessories

Model	Description
21-312	Wrist Blade Handle Kit (includes hot & cold handles)
21-445L	E-Z Install Flexible Water Line Kit
25-150	Thread Sealant Tape
20-302	Replacement Washer Set

Warranty



Please visit krowne.com/warranty for full terms and conditions regarding the warranty on your new Silver Series product.

Product Description	Warranty Period
Silver Series Plumbing	1 Year

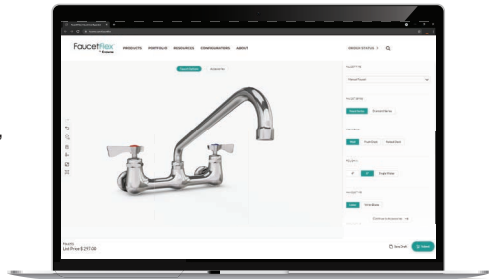
This Standard Warranty and Limitation of Liability (the "Warranty") sets forth the warranty provided by Krowne Metal Corporation (hereinafter "Krowne") with respect to the product purchased by Purchaser (the "Equipment"). By accepting delivery of the Equipment, Purchaser agrees to be bound by and accept these terms and conditions. All defined terms within the Warranty shall have the same meaning and definition as provided elsewhere in the Warranty. Equipment covered by the Warranty shall only be warranted in connection with its original installation only. Krowne will only be obligated to honor the warranty set forth in these terms and conditions upon receipt of full payment for the equipment.

FaucetFlex®
BY KROWNE



- Effortlessly configure a faucet, pre-rinse and much more
- Instant spec sheet generation
- Instant price generation

krowne.com/faucetflex



KROWNE®

100 Haul Rd. • Wayne, NJ 07470
krowne.com