

LANCER®

MAX II DISPENSER SERIES 9000

Operation Manual

PN: 28-0564/01



Lancer Corp.
6655 Lancer Blvd.
San Antonio, Texas 78219

800-729-1500
Technical Support/Warranty: 800-729-1550
custserv@lancercorp.com
lancercorp.com



Manual PN: 28-0564/01

MARCH 2005

FOR QUALIFIED INSTALLER ONLY

ABOUT THIS MANUAL

This booklet is an integral and essential part of the product and should be handed over to the operator after the installation and preserved for any further consultation that may be necessary. Please read carefully the guidelines and warnings contained herein as they are intended to provide the user with essential information for the continued safe use and maintenance of the product. In addition, it provides GUIDANCE ONLY to the user on the correct services and site location of the unit.

The installation and relocation, if necessary, of this product must be carried out by qualified personnel with up-to-date safety and hygiene knowledge and practical experience, in accordance with current regulations.

TABLE OF CONTENTS

SPECIFICATIONS.....	4
PRE-INSTALLATION CHECKLIST.....	5
WARNINGS/CAUTIONS.....	6-9
1. INSTALLATION.....	10
1.1 RECEIVING.....	10
1.2 UNPACKING.....	10
1.3 UNPACKING INSTALLATION KITS.....	10
1.4 SELECTING A COUNTER LOCATION.....	10
1.5 MOUNTING THE DISPENSER.....	10
1.6 CONNECTING THE DRAIN.....	10
1.7 FILLING UNIT WITH WATER.....	11
1.8 CONNECTING TO ELECTRICAL POWER.....	11
1.9 CONNECTING TO WATER SUPPLY.....	12
1.10 CONNECTING THE CO2 SUPPLY.....	12
1.11 CONNECTING TO REMOTE BIB SYRUP PUMPS.....	12
1.12 CONNECTING TO REMOTE PRESSURIZED SYRUP SUPPLY.....	12
1.13 PURGING THE CARBONATION SYSTEM.....	13
1.14 ADJUSTING WATER FLOW.....	13
1.15 ADJUSTING WATER TO SYRUP (RATIO) BRUX.....	13
2. SCHEDULED MAINTENANCE.....	13
2.1 DAILY.....	13
2.2 WEEKLY.....	13
2.3 MONTHLY.....	13
2.4 EVERY SIX (6) MONTHS.....	13
2.5 YEARLY.....	13
3. DISPENSER CLEANING AND SANITIZING.....	14
3.1 GENERAL INFORMATION.....	14
3.2 AMBIENT PROCESS.....	15
3.3 ALTERNATE CLEANING AND SANITIZING AGENTS.....	15
4. CONNECTION FOR PLAIN WATER PRODUCT.....	16
5. TROUBLESHOOTING.....	16-23

6. ILLUSTRATIONS, PARTS LISTINGS, WIRING DIAGRAMS, AND PLUMBING DIAGRAMS.....	24
6.1 MAX II ASSEMBLY.....	24-25
6.2 REFRIGERATION DECK ASSEMBLY.....	26-27
6.3 CABINET ASSEMBLY.....	28-29
6.4 CARBONATOR DECK ASSEMBLY.....	30
6.5 WATER REGULATOR ASSEMBLY.....	31
6.6 CARBONATOR, WATER/SYRUP LINE ASSEMBLIES.....	32-33
6.7 CONTROL HOUSING.....	34-35
6.8 WIRING DIAGRAM.....	36
7. DISPENSER DISPOSAL.....	37

MAX II SPECIFICATIONS



<p>DIMENSIONS Width: 25 1/2 inches (648 mm) Depth: 24 3/4 inches (629 mm) Height: 16 7/8 inches (429 mm)</p> <p>SPACE REQUIRED Left Side: 4 inches (101.6 mm) Right side: 4 inches (101.6 mm) Top: 8 inches (203.2 mm) Optional legs: 4 inches (101.6 mm)</p> <p>ELECTRICAL 115VAC/60Hz/3 amps</p>	<p>WEIGHT Empty: 146 pounds (66.2 kg) Operating: 220 pounds (99.8 kg) Shipping: 160 lbs (72.5 kg)</p> <p>ICE Capacity: 27 - 30 pounds (12.2 to 13.6 kg)</p> <p>FITTINGS Water for carbonator inlet: 3/8 in barb Plain water inlet: 3/8 in barb Brand syrup inlets: 3/8 in barb CO2 inlet: 3/8 in barb</p>	<p>PLAIN WATER SUPPLY Min flowing pressure: 25 PSI (0.172 MPA) Max static pressure: 50 PSI (0.345 MPA)</p> <p>CARBON DIOXIDE (CO2) Min pressure: 70 PSIG (0.483 MPA) Max pressure: 80 PSIG (0.552 MPA)</p>
<p>DRINK CAPACITY 2-12 ounce drinks below 40°F (4.4°C) 4-12 ounce drinks below 40°F (4.4°C)</p>	<p>CONDITION C (90°F (32°C), 65%RH) 125 drinks 97 drinks</p>	<p>CONDITION D (105°F (41°C), 75%RH) 115 drinks 92 drinks</p>

PRE-INSTALLATION CHECKLIST

BEFORE GETTING STARTED

Each unit is tested under operating conditions and is thoroughly inspected before shipment. At the time of shipment, the carrier accepts responsibility for the unit. Upon receiving the unit, carefully inspect the carton for visible damage. If damage exists, have the carrier note the damage on the freight bill and file a claim with carrier. Responsibility for damage to the dispenser lies with the carrier.

TOOLS REQUIRED	
<input type="checkbox"/> Oetiker Pliers	<input type="checkbox"/> Slotted Screwdriver
<input type="checkbox"/> Tubing Cutters	<input type="checkbox"/> Phillips Screwdriver
<input type="checkbox"/> Wrench	<input type="checkbox"/> Cordless Drill

POST MIX ACCESSORIES	
<input type="checkbox"/> CO2 Regulator Set	<input type="checkbox"/> CO2 Supply
<input type="checkbox"/> Beverage Tubing	<input type="checkbox"/> Oetiker Clamps/Fittings
<input type="checkbox"/> Water Booster	<input type="checkbox"/> Water Regulator
<input type="checkbox"/> Precision Cutters (if removing/replacing carbonator tank)	

BIB SYSTEM	
<input type="checkbox"/> BIB Rack	<input type="checkbox"/> BIB Regulator Set
<input type="checkbox"/> BIB Syrup Boxes	
<input type="checkbox"/> BIB Connectors - ensure you have the correct connectors for syrup lineup.	

CONSIDER LOCATION OF THE FOLLOWING PRIOR TO INSTALL	
<input type="checkbox"/> Water supply lines	<input type="checkbox"/> Drain
<input type="checkbox"/> Is the countertop level?	<input type="checkbox"/> Heating and air conditioning ducts
<input type="checkbox"/> Grounded electrical outlet.	
<input type="checkbox"/> Enough space to install the dispenser. Include space for a top-mounted ice machine, if necessary.	
<input type="checkbox"/> Does the top-mounted ice machine have a minimum clearance on all sides?	
<input type="checkbox"/> Located away from direct sunlight or overhead lighting.	
<input type="checkbox"/> Can the countertop support the weight of the dispenser? Be sure to include the weight of an ice machine (if necessary) plus the weight of the ice.	
<input type="checkbox"/> This unit is not suitable for use in an area where a water jet could be used.	



WARNING/ADVERTENCIA/AVERTISSEMENT



⚠ The dispenser is for indoor use only. This appliance is intended for use in commercial applications such as restaurants, stores or similar. This unit is not a toy. It should not be used by children or infirm persons without supervision. This appliance is not intended for use by persons (including children) with reduced physical, sensory or mental capabilities, or lack of experience and knowledge, unless they have been given supervision or instruction concerning use of the appliance by a person responsible for their safety. Cleaning and user maintenance shall not be performed by children without supervision. This unit is not designed to dispense dairy products. The minimum/maximum ambient operating temperature for the dispenser is 40°F to 105°F (4°C to 41°C). Do not operate unit below minimum ambient operation conditions. Should freezing occur, cease operation of the unit and contact authorized service technician. Service, cleaning and sanitizing should be accomplished only by trained personnel. Applicable safety precautions must be observed. Instruction warnings on the product being used must be followed.

⚠ El dispensador sólo debe usarse en interiores. Esta unidad está diseñada para su uso en aplicaciones comerciales tales como restaurantes, tienda o similares. Esta unidad no es un juguete. No la deben usar niños ni personas discapacitadas sin supervisión. Esta unidad no está destinada al uso por parte de personas (incluso niños) con capacidad física, sensorial o mental reducida, o sin experiencia y conocimientos suficientes, a menos que una persona responsable de su seguridad les haya dado supervisión o capacitación en el uso de la unidad. Limpieza y mantenimiento de usuario no deberá ser realizada por los niños sin supervisión. Esta unidad no ha sido diseñada para suministrar productos lácteos. La temperatura ambiente operativa mínima / máxima para el dispensador es de 40°F a 105°F (4°C a 41°C). No opere la unidad por debajo de las condiciones mínimas de funcionamiento ambiente. En caso de ocurrir congelación, cesar la operación de la unidad y póngase en contacto con el servicio técnico autorizado. Servicio de limpieza y desinfección debe llevarse a cabo solamente por personal especializado. Precauciones de seguridad aplicables deben ser observadas. Advertencias de instrucciones en el producto que se use debe ser seguido.

⚠ Le distributeur est destiné à un usage à l'intérieur seulement. Cet appareil est conçu pour une utilisation dans des applications commerciales telles que les restaurants, les dépanneurs ou similaires. Cet appareil n'est pas un jouet. Il ne devrait pas être utilisé par des enfants ou des personnes infirmes sans surveillance. Cet appareil n'est pas destiné à un usage par des personnes (y compris les enfants) ayant des capacités physiques, sensorielles ou mentales réduites, ou manquant d'expérience et de connaissances, à moins qu'elles obtiennent de la surveillance ou des instructions au sujet de l'utilisation de l'appareil de la part d'une personne chargée de leur sécurité. Nettoyage et entretien de l'utilisateur ne doivent pas être effectués par des enfants sans surveillance. Cet appareil n'est pas conçu pour distribuer des produits laitiers. La température de service ambiante minimum/maximum pour le distributeur est de 40°F à 105°F (4°C à 41°C). Ne pas faire fonctionner l'appareil ci-dessous les conditions minimales de fonctionnement ambiantes. Faut-gel se produisent, cesser l'exploitation de l'appareil et contactez technicien agréé. Service de nettoyage et de désinfection doivent être effectués uniquement par du personnel qualifié. Les mesures de sécurité applicables doivent être respectées. Avertissements Instruction sur le produit utilisé doit être suivie.



DISPENSER INSTALLATION HIGHLIGHTS



This unit has been factory sanitized per Lancer specifications.

Listed below are six critical elements which will aid in a successful installation.

1. Fill water bath until water overflows from tank overflow tube.
2. The carbonator pump motor must be disconnected from the power supply (see Section 1.7) prior to connection to water .. supply for initial build up of ice bank. Failure to do so will result in automatic shut off of carbonator (see item 6 below) or damage to the pump.
3. If this dispenser is installed in an area that is susceptible to $\pm 10\%$ variation of the nominal line voltage, consider installing a surge protector or similar protection device.
4. There is a five (5) minute delay which prevents the compressor and condenser fan from starting until the delay has lapsed. If electrical current is interrupted, there is always a five (5) minute delay before the compressor starts.
5. Supply Water Pressure: Minimum - 25 PSI (0.172 MPA); Maximum - 50 PSI (0.345 MPA); If pressure is over 50 PSIG (0.345 MPA), a water pressure regulator must be used.
6. On units with the built in water regulator, the regulator must be removed if inlet water pressure is less than 25 PSIG. (0.172 MPA)



PUNTOS IMPORTANTES EN LA UNIDAD DISPENSADORA



Esta tin/dad ha sido saneada en fabrica por las especificaciones de Lancer.

A continuacion se relacionan 6 puntos importantes para una conecta instalacion.

1. Llene el bano-Maria hasta que el agua se desborde sobre el tubo que controla la derrama del tanque.
2. El motor de la bomba del carbonatador debe desconectarse electricamente (Ver Manual - Seccion 1.7) antes de conectar el suministro de agua para la formacion inicial del banco de hielo. De no hacerse esto resultaria en un bloqueo automatico del carbonatador (ver abajo el punto 6) o en danos a la bomba.
3. Si la unidad va a ser instalada en un area en la que puedan darse variaciones de voltage de + 6 - 10% de su valor nominal, se debe considerar la conveniencia de instalar un estabilizador de corriente o sistema de proteccion similar.
4. Hay una demora de 5 minutos que evita que el compresor y el abanico del condensador arranquen hasta pasado ese tiempo. Si hay algun corte en la corriente electrica siempre se producira esa demora de 5 minutos antes de arrancar el compresor.
5. Presión de suministro del agua de red: Minimo 25 PSI (0.172 MPA); Maximo 50 PSI (0.345 MPA). En unidades sin regulador de presión incorporado, si la presión del agua es superior a 50 PSIG (0.345 MPA) se debe usar un regulador de presión.
6. En unidades con regulador de presión incorporado, el regulador debe der eliminado cuando la presión de entrada de agua sea inferior a 25 PSIG (0.172 MPA).



REGLES DE SECURITE POUR L'NSTALLATION DU DISTRIBUTEUR DE SODAS



La proprètè da cet ensamble est assurè à l'usine sylvant les spècifications èmis par Lancer .

Il est essentiel de respecter les 6 points suivants pour l'installation de l'appareil:

1. Remplir le bain-Maire jusqu'à ce que l'eau déborde par le tuyau de trop-plein du réservoir.
2. Le moteur de la pompe du carbonateur doit être débranché de l'alimentation électrique (Voir le manuel, Section 1.7) avant l'arrivée de l'eau pour la formation initiale de la glace. Oublier ou négliger cette opération provoquera l'arrêt automatique du carbonateur (voir le point 6 cidessous) ou causera des dommages à la pompe.
3. Si le distributeur es installé dans une zone ou la tension électrique nominale est susceptible de variations de (+) 10%, il est conseillé d'installe un appaeil de protection contre les sautes de courant.
4. Un d'lai de 5 minutes empeche le compresseur et la ventilation du condesateur de se mettre en marche avant que ce lees de temps ne se soit écoulé. Lorsque le courant électrique es interrompu, il y a toujours un délai de 5 minutes avant que le presseur ne se mette en.
5. Pression de l'eau: Minimum 25 PSI (0.172 MPA); Maximo 50 PSI (0.345 MPA). Sur les unités qui n'ont pas de régulateur de pression d'eau incorpré, si la pression d'H2O est supérieure à 50 PSIG (0.345 MPA), un régulateur de pression d'eau doit être utilisè.
6. Sur les unités avec régulateur d'eau incorporé, le régulateur doit être enlevé si la pression d'arrivve est inférieure à 25 PSIG (0.172 MPA)



ELECTRICAL WARNING/ADVERTENCIA ELÉCTRICA/ AVERTISSEMENT ÉLECTRIQUE



⚠ Check the dispenser serial number plate for correct electrical requirements of unit. Do not plug into a wall electrical outlet unless the current shown on the serial number plate agrees with local current available. Follow all local electrical codes when making connections. Each dispenser must have a separate electrical circuit. Do not use extension cords with this unit. Do not 'gang' together with other electrical devices on the same outlet. The keyswitch does not disable the line voltage to the transformer primary. Always disconnect electrical power to the unit to prevent personal injury before attempting any internal maintenance. The resettable breaker switch should not be used as a substitute for unplugging the dispenser from the power source to service the unit. Only qualified personnel should service internal components of electrical control housing. Make sure that all water lines are tight and units are dry before making any electrical connections!

⚠ Verifique la placa con el número de serie del dispensador, donde encontrará los requisitos eléctricos correctos de la unidad. No enchufe la unidad en un tomacorriente de pared a menos que la corriente indicada en la placa con el número de serie concuerde con la corriente local disponible. Al hacer las conexiones, respete todos los códigos eléctricos locales. Cada dispensador debe tener un circuito eléctrico independiente. No use extensiones con esta unidad. No la conecte junto con otros dispositivos eléctricos al mismo tomacorriente. El interruptor de llave no corta el voltaje de línea al transformador primario desconecte siempre la alimentación eléctrica a la unidad para evitar lesiones personales antes de tratar de realizar tareas de mantenimiento. El disyuntor de sobrecarga resettable no se debe usar como sustituto para desenchufar el dispensador de la fuente de alimentación para realizar tareas de servicio de la unidad. El servicio de los componentes internos de la caja de control eléctrico debe confiarse exclusivamente a personal calificado. Asegúrese de que todas las líneas de agua estén ajustadas y las unidades estén secas antes de hacer conexiones eléctricas.

⚠ Examinez la plaque de numéro de série du distributeur pour connaître les bonnes exigences en matière d'électricité pour l'appareil. Ne le branchez pas à une prise électrique murale à moins que le courant indiqué sur la plaque de numéro de série corresponde au courant local disponible. Respectez tous les codes électriques locaux lorsque vous faites des connexions. Chaque distributrice doit avoir un circuit électrique séparé. N'utilisez pas de cordons prolongateurs avec cet appareil. Ne pas le brancher avec d'autres appareils électriques sur la même prise. L'interrupteur à clé ne coupe pas la tension secteur au transformateur primaire. Débranchez toujours le courant électrique à l'appareil, afin de prévenir des blessures, avant de faire un entretien interne quelconque. Le disjoncteur réarmable ne devrait pas être utilisé au lieu de débrancher le distributeur de la source d'alimentation en électricité pour faire de l'entretien/une réparation de l'appareil. Seul le personnel qualifié devrait faire l'entretien/la réparation des composants internes dans le logement des commandes électriques. Assurez-vous que toutes les conduites d'eau sont étanches et que les appareils sont secs avant de faire des connexions électriques!



CO₂/CARBON DIOXIDE /EI ANHÍDRIDO CARBÓNICO/ DIOXYDE DE CARBONE



⚠ Carbon Dioxide (CO₂) is a colorless, noncombustible gas with a light pungent odor. High percentages of CO₂ may displace oxygen in the blood. Prolonged exposure to CO₂ can be harmful. Personnel exposed to high concentrations of CO₂ gas will experience tremors which are followed by a loss of consciousness and suffocation. If a CO₂ gas leak is suspected, immediately ventilate the contaminated area before attempting to repair the leak. Strict attention must be observed in the prevention of CO₂ gas leaks in the entire CO₂ and soft drink system.

⚠ El anhídrido carbónico (CO₂) es un gas incoloro, no combustible, con un olor pungente ligero. Altos porcentajes de CO₂ en la sangre pueden desplazar el oxígeno en la sangre. La exposición prolongada al CO₂ puede ser nociva. El personal expuesto a concentraciones altas de CO₂ sufre temblores seguidos de la pérdida de la consciencia y sofocación. Si se sospecha que existe una pérdida de CO₂, ventile el área contaminada antes de tratar de reparar la pérdida. Hay que prestar suma atención para evitar pérdidas de CO₂ en todo el sistema de CO₂ y de bebidas gaseosas.

⚠ Le dioxyde de carbone (CO₂) est plus lourd que l'air et déplace l'oxygène. Le CO₂ est un gaz incolore et incombustible, ayant une odeur un peu âcre. Des concentrations fortes de CO₂ peuvent déplacer l'oxygène dans le sang. Une exposition prolongée au CO₂ peut être nocive. Le personnel exposé à de fortes concentrations de CO₂ gazeux éprouvera des tremblements, suivis rapidement d'une perte de conscience et de suffocation. On doit faire très attention de prévenir les fuites de CO₂ gazeux dans le système entier de CO₂ et de boisson gazeuse. Si on suspecte qu'il y a une fuite de CO₂ gazeux, aérez le secteur contaminé immédiatement avant d'essayer de réparer la fuite.



AUTOMATIC AGITATION/AGITACIÓN AUTOMÁTICA/



⚠ Units are equipped with an automatic agitation system and will activate unexpectedly. Do not place hands or foreign objects in the water bath tank. Unplug the dispenser during servicing, cleaning, and sanitizing. To avoid personal injury, do not attempt to lift the dispenser without assistance. For heavier dispensers, use a mechanical lift.

⚠ Las unidades están equipadas con un sistema automático de agitación, por lo que se pueden activar repentinamente. No ponga las manos ni objetos extraños en el compartimiento donde se guarda el hielo. Durante el servicio, la limpieza y la esterilización, desenchufe el dispensador. Para evitar lesiones personales, no trate de levantar el dispensador sin ayuda. Para los dispensadores más pesados, use un elevador mecánico.

⚠ Les appareils sont équipés d'un système d'agitation automatique qui s'activera de manière inattendue. Ne mettez pas les mains ou des corps étrangers dans le compartiment d'entreposage de glace. Débranchez le distributeur pendant l'entretien/la réparation, le nettoyage et l'aseptisation. Pour éviter des blessures, n'essayez pas de soulever le distributeur sans aide. Pour les distributeurs plus lourds, utilisez un chariot élévateur.



WATER NOTICE/AGUA AVISO/ PRÉAVIS DE L'EAU



⚠ Provide an adequate potable water supply. Water pipe connections and fixtures directly connected to a potable water supply must be sized, installed, and maintained according to federal, state, and local laws. The water supply line must be at least a 3/8 inches (9.525 mm) pipe with a minimum of 25 PSI (0.172 MPA) line pressure, but not exceeding a maximum of 50 PSI (0.345 MPA). Water pressure exceeding 50 PSI (0.345 MPA) must be reduced to 50 PSI (0.345 MPA) with the provided pressure regulator. Use a filter in the water line to avoid equipment damage and beverage off-taste. Check the water filter periodically, as required by local conditions. The water supply must be protected by means of an air gap, a backflow prevention device (located upstream of the CO2 injection system) or another approved method to comply with NSF standards. A leaking inlet water check valve will allow carbonated water to flow back through the pump when it is shut off and contaminate the water supply. Ensure the backflow prevention device complies with ASSE and local standards. It is the responsibility of the installer to ensure compliance.

⚠ Proporcione un suministro adecuado de agua potable. La línea de suministro de agua debe ser de una tubería de por lo menos 3/8 pulgadas (9.525 mm) con una presión de línea mínima de 25 PSI (0.172 MPA), pero sin superar el máximo de 50 PSI (0.345 MPA). La presión de agua que supere los 50 PSI se debe reducir a 50 PSI (0.345 MPA) con un regulador de presión. Use un filtro en la línea de agua para evitar daños al equipo y cierto sabor raro en las bebidas. Verifique periódicamente el filtro de agua de acuerdo con las condiciones imperantes. El suministro de agua debe estar protegido por una separación de aire, un dispositivo de prevención del contraflujo (situado antes del sistema de inyección de CO2) u otro método aprobado para cumplir las normas NSF. Si la válvula de retención de entrada de agua tuviera pérdidas, permitiría el contraflujo del agua carbonatada a través de la bomba cuando se la detiene y contaminaría el suministro de agua. Asegúrese de que el dispositivo de prevención del contraflujo cumpla con las normas locales y de ASSE. Es responsabilidad del instalador cumplir con estos requisitos.

⚠ Fournissez une alimentation en eau potable adéquate. Les connexions et les dispositifs de conduite d'eau connectés directement à une alimentation en eau potable doivent être calibrés, installés et maintenus selon les lois fédérales, provinciales et locales. La conduite d'alimentation en eau doit être un tuyau d'au moins 3/8 pouces (9.525 millimètres) avec une pression de ligne minimum de 25 LPC (0.172 MPA), mais ne doit pas dépasser un maximum de 50 LPC (0.345 MPA). Une pression d'eau de plus de 50 LPC (0.345 MPA) doit être réduite à 50 LPC (0.345 MPA) avec le régulateur de pression fourni. Utilisez un filtre dans la conduite d'eau pour éviter des dommages à l'équipement et un goût des boissons qui n'est pas juste. Vérifiez le filtre à eau périodiquement, selon les exigences des conditions locales. L'alimentation en eau doit être protégée au moyen d'un intervalle d'air, un disjoncteur hydraulique (situé en amont du système d'injection de CO2) ou une autre méthode approuvée pour se conformer aux normes de la NSF. Un clapet antiretour pour l'eau entrante qui fuie permettra à l'eau gazeuse de repasser par la pompe quand elle est fermée et de contaminer l'alimentation en eau. Assurez-vous que le disjoncteur hydraulique soit conforme aux normes de l'ASSE et locales. L'installateur est responsable d'assurer la conformité.

1. INSTALLATION

1.1 RECEIVING

Each unit is tested and thoroughly inspected before shipment. At the time of shipment, the carrier accepts the unit and any claim for damages. Upon receiving units from the delivering carrier, the customer should carefully inspect carton for visible indication of damage. If damage exists, have the carrier note the damage on the bill of lading and file a claim with the carrier.

1.2 UNPACKING

- A. Cut steel band and remove.
- B. Remove top portion of carton by lifting up.
- C. Remove accessory kit and loose parts from top packaging.
- D. Remove top inner carton pad and corners.
- E. Lift unit up by plywood shipping base and remove lower portion of carton.
- F. Inspect unit for concealed damage. If evident, notify delivering carrier and file a claim against the carrier.
- G. Remove plywood shipping base from unit by moving unit so that one side is off the counter top or table allowing access to screws on the bottom of the plywood shipping base.

NOTE: If unit is to be transported, it is advisable to leave the unit secured to the plywood base.

- H. If unit is to be installed with optional legs, assemble legs to unit by tilting unit. **DO NOT LAY UNIT ON ITS SIDE OR BACK.**

1.3 UNPACKING INSTALLATION KITS

- A. Inspect kits for concealed damage and if evident, notify delivering carrier and file a claim against same.
- B. Each kit contains a list of the parts and a drawing showing the proper assembly of the parts.

1.4 SELECTING A COUNTER LOCATION

- A. Select a location close to a properly grounded electrical outlet and water supply that meet the requirements as shown in the section, SPECIFICATIONS.



WARNING FAILURE TO MAINTAIN SPECIFIED CLEARANCE WILL CAUSE THE COMPRESSOR TO OVERHEAT AND WILL RESULT IN COMPRESSOR FAILURE.

ADVERTENCIA SI NO DEJA EL ESPACIO LIBRE ESPECIFICADO EL COMPRESOR PUEDE RECALENTAR Y FALLAR.

AVERTISSEMENT LE FAIT DE NE PAS MAINTENIR LE DÉGAGEMENT SPÉCIFIÉ FERA SURCHAUFFER LE COMPRESSEUR ET AURA COMME CONSÉQUENCE UNE DÉFAILLANCE DU COMPRESSEUR.

- B. Condenser air is drawn in from the front half of the top cover, and discharged out the rear half of the top cover. A minimum of eight (8) inches (203 mm) clearance must be maintained over the top of the unit to provide for proper air flow and air circulation.

1.5 MOUNTING THE DISPENSER

- A. The dispenser is designed to be installed either permanently installed or placed on a counter using the four (4) inch legs (included in the Lancer kit, PN 82-1704).

NOTE: NSF listed units must be sealed to the counter or have four (4) inch legs installed.

- B. When the dispenser is to be permanently bolted to the counter top, the dispenser base must be sealed to the counter top with a bead of clear silicone caulk or sealant which provides a smooth and easily cleanable bond to the counter.
- C. For installation using the unit legs, use Lancer kit (PN 82-1704).

1.6 CONNECTING THE DRAIN

- A. Remove cup rest. Lift splash plate up and pull out and down on the bottom to remove.
- B. Remove the drip tray from the unit and connect the drain tube to the drain fitting located on the back.
- C. Route the drain tube to a suitable drain and replace the unit's drip tray.

1.7 FILLING UNIT WITH WATER

- A. Remove the bonnet from the unit.
- B. Remove the (yellow) plastic plug (located in the front of the unit's compressor deck) from the unit's fill hole.
- C. Using a funnel or tube, fill the water bath compartment with water until it flows out of the overflow tube into the drip tray.



CAUTION THE WATER BATH COMPARTMENT MUST BE FILLED WITH WATER BEFORE PLUGGING IN THE UNIT, OTHERWISE THE COMPRESSOR DECK AND CONDENSOR FAN MAY NOT OPERATE PROPERLY

PRECAUCIÓN EL COMPARTIMIENTO DE BAÑO DE AGUA DEBA ESTAR LLENO DE AGUA ANTES DE ENCHUFAR LA UNIDAD PUES, DE LO CONTARIO, LA PLATAFORMA DEL COMPRESOR Y EL VENTILADOR DEL CONDENSADOR NO FUNCIONARIAN CORRECTAMENTE.

ATTENTION LE COMPARTIMENT DE BAIN-MARIE DOIT ÊTRE REMPLI AVEC DE L'EAU AVANT DE BRANCHER L'APPAREIL, SINON LA PLATEFORME DU COMPRESSEUR ET LE VENTILATEUR DU CONDENSATEUR PEUVENT NE PAS FONCTIONNER CORRECTEMENT.

- D. Replace the plastic plug.

1.8 CONNECTING TO ELECTRICAL POWER

NOTE: Adhere to the ELECTRICAL Warnings/Cautions, Page 8.



GROUNDING WARNING THE DISPENSER MUST BE PROPERLY ELECTRICALLY GROUNDED TO AVOID SERIOUS INJURY OR FATAL ELECTRICAL SHOCK. THE POWER CORD HAS A THREE-PRONG GROUNDED PLUG. IF A THREE-HOLE GROUNDED ELECTRICAL OUTLET IS NOT AVAILABLE, USE AN APPROVED METHOD TO GROUND THE UNIT. FOLLOW ALL LOCAL ELECTRICAL CODES WHEN MAKING CONNECTIONS. EACH DISPENSER MUST HAVE A SEPARATE ELECTRICAL CIRCUIT. DO NOT USE EXTENSION CORDS. DO NOT CONNECT MULTIPLE ELECTRICAL DEVICES ON THE SAME OUTLET.

ADVERTENCIA, PUESTA A TIERRA ES NECESARIO PONER A TIERRA ELÉCTRICAMENTE EL DISPENSADOR PARA EVITAR LESIONES GRAVES E INCLUSO ELECTROCHOQUES FATALES. EL CABLE DE ALIMENTACIÓN TIENE UN ENCHUFE PUESTO A TIERRA DE 3 CLAVIJAS. SI NO SE DISPONE DE UN TOMA ELÉCTRICO CONECTADO A TIERRA DE TRES AGUJEROS, USE UN MÉTODO APROBADO PARA PONER A TIERRA LA UNIDAD. AL HACER LAS CONEXIONES, RESPETE TODOS LOS CÓDIGOS ELÉCTRICOS LOCALES. CADA DISPENSADOR DEBE TENER UN CIRCUITO ELÉCTRICO INDEPENDIENTE. NO USE CABLES DE EXTENSIÓN. NO CONECTE VARIOS DISPOSITIVOS ELÉCTRICOS AL MISMO TOMACORRIENTE.

EXIGENCES DE MISE À LA TERRE LA DISTRIBUTRICE DOIT ÊTRE MISE À LA TERRE ÉLECTRIQUEMENT CORRECTEMENT POUR ÉVITER DES BLESSURES GRAVES OU UNE DÉCHARGE ÉLECTRIQUE MORTELLE. LE CORDON D'ALIMENTATION A UNE FICHE À TROIS BRANCHES MISE À LA TERRE. SI AUCUNE PRISE DE COURANT ÉLECTRIQUE À TROIS TROUS N'EST DISPONIBLE, UTILISEZ UNE MÉTHODE APPROUVÉE POUR METTRE L'UNITÉ À LA TERRE. RESPECTEZ TOUS LES CODES ÉLECTRIQUES LOCAUX LORSQUE VOUS FAITES DES CONNEXIONS. CHAQUE DISTRIBUTRICE DOIT AVOIR UN CIRCUIT ÉLECTRIQUE SÉPARÉ. N'UTILISEZ PAS DE CORDONS PROLONGATEURS. NE BRANCHEZ PAS PLUSIEURS APPAREILS ÉLECTRIQUES À LA MÊME PRISE DE COURANT.

- A. If the unit is equipped with a built-in carbonator, disconnect the power supply to the carbonator motor by disconnecting the four pin connector located near the top of the electrical control box on the refrigeration deck.
- B. Route and plug the power supply cord to a grounded electrical outlet that supplies the proper voltage and amperage rating for this unit. This will turn on the refrigeration system and allow it to start cooling while completing the rest of the installation. The agitator motor will start immediately, but the compressor and fan motor have a five (5) minute delay.



CAUTION FAILURE TO DISCONNECT THE MOTOR POWER SUPPLY WILL DAMAGE THE CARBONATOR MOTOR, THE PUMP AND VOID THE WARRANTY.

PRECAUCIÓN SI NO DESCONECTA LA ALIMENTACIÓN ELÉCTRICA DEL MOTOR PODRÍAN DAÑARSE LA BOMBA Y EL MOTOR DEL CARBONATADO Y ANULAR LA GARANTÍA.

ATTENTION LE FAIT DE NE PAS MAINTENIR LE DÉGAGEMENT SPÉCIFIÉ FERA SURCHAUFFER LE COMPRESSEUR ET AURA COMME CONSÉQUENCE UNE DÉFAILLANCE DU COMPRESSEUR.

1.9 CONNECTING TO WATER SUPPLY

NOTE: Adhere to the WATER SUPPLY Warnings/Cautions, Page 9.

- A. Using appropriate tubing and fittings, connect carbonated water supply line to water source. DO NOT CONNECT TO CARBONATOR AT THIS TIME.
- B. Flush water supply line thoroughly.

NOTE: If the water source is above 50 PSIG (345 kPa, 3.52 kg/cm², 3.45 BAR), cut tubing assembly and install Water Regulator Kit (PN 18-0253/02) as shown in kit instruction sheet.

- C. Route tubing through hole in counter and through opening behind splash plate and connect to carbonator pump using a flare seal washer (PN 05-0017). Use a back-up wrench to prevent damage to carbonator pump.
- D. Leave 12 inches (305 mm) of extra tubing length below the counter for servicing and moving the dispenser.
- E. Turn on water supply and check for leaks.
- F. Using test gauge assembly (PN 22-0138), set regulator at a maximum of 50 PSIG (3.52 kg/cm²).

1.10 CONNECTING THE CO2 SUPPLY

- A. Connect high pressure CO2 regulator assembly to CO2 cylinder. Use a new CO2 tank washer if regulator does not have built-in o-ring seal.
- B. Place CO2 cylinder in service location under counter, etc., and secure it with a safety chain.
- C. Using tubing and fittings from installation kit connect tubing assembly to tank mount regulator using flare seal washer (PN 05-0011). Use a back-up wrench to prevent damage to regulator assembly.
- D. Route gas line through hole in counter and through opening behind the dispenser splash plate.
- E. Leave 12 inches (254 mm) of extra tubing length below the counter for servicing and moving the dispenser.
- F. Connect tubing directly to the carbonator CO2 inlet check valve.



WARNING DO NOT TURN ON THE CO2 SUPPLY AT THIS TIME.

ADVERTENCIA NO CONECTE TODAVÍA LA ALIMENTACIÓN DE CO2.

AVERTISSEMENT N'OUVREZ PAS L'ALIMENTATION EN CO2 À CE MOMENT.

1.11 CONNECTING TO REMOTE BIB SYRUP PUMPS

- A. Locate the remote BIB, syrup supply and pumps in a convenient location.
- B. Attach the syrup supply tubes to the dispensers syrup inlet fittings (located behind the splash plate) using a 1/4" Oetiker clamp for each syrup flavor.
- C. Route the syrup supply tubes to the remote syrup pumps.
- D. Complete installation of the remote syrup pump system following the manufacturer's instructions.

1.12 CONNECTING TO REMOTE PRESSURIZED SYRUP SUPPLY

- A. Locate the five gallon syrup containers and the CO2 cylinder and regulator set in a convenient location.
- B. Attach the syrup supply tube assembly to the dispensers syrup inlet fittings (located behind the splash plate) using a 1/4" Oetiker clamp for each syrup flavor.
- C. Route the syrup supply tubes to the five gallon syrup containers and attach them to the appropriate syrup flavor.
- D. Attach a CO2 supply line from each of the five gallon syrup containers to the low pressure regulator and pressurize the containers.

1.13 PURGING THE CARBONATION SYSTEM

- A. The relief valve for the built-in carbonator is located on the right hand side of the unit's carbonator deck. Lift the yellow lever on the top of the relief valve until water flows from the holes in the relief valve. Then release the relief valve.
- B. Reconnect the power supply to the carbonator pump.
- C. Back off on the CO2 regulator pressure adjusting screw all the way. Open the CO2 cylinder handle slowly. Turn the CO2 pressure regulator up slowly to 75 PSIG (5.1 bar).
- D. Open a dispensing valve until water and syrup are flowing steadily from the valve.
- E. Repeat procedure "D" for each valve.
- F. Check all of the unit's syrup, water and CO2 connections for leaks and repair if necessary.

NOTE: To check for CO2 leaks, close the valve on the CO2 cylinder and observe if the pressure to the system drops with the cylinder valve closed for five (5) minutes. Open the cylinder valve after check.

- G. Replace the unit's bonnet, splash plate and cup rest.

1.14 ADJUSTING WATER FLOW

- A. The refrigeration unit should have been running for a least one hour before you attempt to brix the valves. The drink temperature should be no higher than 40°F (4.4°C) when the brix is set. This is best done after the unit has made an ice bank.
- B. Adjust the water flow for each valve according to the valve manufacturer's recommendations.

1.15 ADJUSTING WATER TO SYRUP (RATIO) BRUX

Adjust the water/syrup ratio (brix) according to the valve manufacturer's recommendations.

2. SCHEDULED MAINTENANCE

2.1 DAILY

- A. Remove the nozzle and diffuser from each valve and wash them in warm water.
- B. Remove the cup rest and wash in warm soapy water.
- C. Pour warm soapy water into the drip tray and wipe with a clean cloth.
- D. With a clean cloth and warm soapy water, wipe off all of the units exterior surfaces.
- E. Replace the cup rest, valve diffusers and valve nozzles.

2.2 WEEKLY

- A. Check the flow and brix of each valve following the brixing instructions given in sections 1.14 and 1.15.
- B. Remove the unit's bonnet and check the level of water in the water bath. Replenish as required, and replace the bonnet.

2.3 MONTHLY

- A. Unplug the dispenser from its power source.
- B. Remove the bonnet, and clean the dirt from the unit's condenser using a soft brush.
- C. Replace the bonnet and plug in the unit.

2.4 EVERY SIX (6) MONTHS

- A. Clean and sanitize the unit using the appropriate procedures outlined in Section 3 of this manual.

2.5 YEARLY

- A. Clean water bath interior, including evaporator coils and refrigeration components.
- B. Clean the entire exterior of the unit.
- C. Sanitize syrup lines.

NOTE: Because of difficulty in rinsing, detergent solution should not be introduced into the carbonator.

3. DISPENSER CLEANING AND SANITIZING

3.1 GENERAL INFORMATION

- A. Lancer equipment is shipped from the factory cleaned and sanitized in accordance with NSF guidelines. After installation, it is the responsibility of the installer to clean and sanitize the dispenser again. The operator of the equipment must provide continuous maintenance as required by this manual and state and local health department guidelines to ensure proper operation and sanitation requirements are maintained.

NOTES: The cleaning and sanitizing procedures provided herein pertain to the Lancer equipment identified by this manual. If other equipment is being cleaned, follow the guidelines established by the manufacturer for that equipment.

IMPORTANT: Water lines are not to be disconnected during the cleaning and sanitizing of syrup lines to avoid contamination.

- B. Cleaning and sanitizing should be accomplished only by trained personnel. Sanitary gloves are to be used during cleaning and sanitizing operations. Applicable safety precautions must be observed. Instruction warnings on the product being used must be followed.

C. Recommended Preparation of Cleaning Solutions.

1. Cleaning solutions (for example, Ivory Liquid, Calgon, etc.) mixed with clean, potable water at a temperature of 90° to 110° Fahrenheit should be used to clean equipment. The mixture ratio, using Ivory Liquid, is one (1) ounce of cleanser to two (2) gallons of water. A minimum of four (4) gallons of cleaning mixture should be prepared.

NOTE: Extended lengths of product lines may require that an additional volume of solution be prepared.

2. Any equivalent cleanser may be used as long as it provides a low-sudsing, non-perfumed, easily rinsed mixture.

D. Recommended Preparation of Sanitizing Solutions.

1. Sanitizing solutions should be prepared in accordance with the manufacturer's written recommendations and safety guidelines. Follow manufacturer's requirements so that the solution provides 100 parts per million (PPM) (100mg/L) available chlorine at a temperature of 90°F to 120°F. A minimum of four (4) gallons of sanitizing solution should be prepared.

NOTE: Extended lengths of product lines may require that an additional volume of solution be prepared.

2. Any sanitizing solution may be used as long as it is prepared in accordance with the manufacturer's written recommendations and safety guidelines, and provides 100 PPM (100mg/L) available chlorine.

3.2 AMBIENT PROCESS

- A. The ambient process is the most common method for cleaning and sanitizing dispenser equipment. The detergent should be as recommended and the sanitizer should be low pH (7.0) chlorine solution.
- B. Disconnect syrup containers and remove product from tubing.
- C. Rinse the lines and fittings with clean room temperature water to remove all traces of residual product.
- D. Fill lines with a low-sudsing, non-perfumed, and easily rinsed detergent solution. The solution should be prepared in accordance with the manufacturers recommendations. Make sure the lines are completely filled and allow to stand for at least 10 minutes.
- E. Flush the detergent solution from the lines with clean water. Continue rinsing until testing with phenolphthalein shows that the rinse water is free of residual detergent.
- F. Fill the lines with a low pH (7.0) chlorine solution containing at least 100 PPM (100mg/L) available chlorine. Flow sanitizing solution through dispenser until output tests to full 100 PPM (100mg/L) concentration. Allow to stand for 15 minutes.
- G. Reconnect syrup containers and ready Unit for operation.



WARNING REMOVE SANITIZING SOLUTION FROM DISPENSER AS INSTRUCTED. RESIDUAL SANITIZING SOLUTION LEFT IN SYSTEM COULD CREATE HEALTH HAZARD.

ADVERTENCIA RETIRE SOLUCIÓN DESINFECTANTE DE DISTRIBUIDOR COMO SE INDICA. RESIDUAL SOLUCIÓN DESINFECTANTE SISTEMA DE IZQUIERDA EN PODRÍA GENERAR RIESGOS PARA LA SALUD.

AVERTISSEMENT ENLEVER SOLUTION DÉINFECTANTE DE DISTRIBUTEUR SELON LES INSTRUCTIONS. RESIDUAL SOLUTION DÉINFECTANTE GAUCHE DANS UN SYSTÈME POURRAIT CREER DANGER POUR LA SANTÉ.

- H. Draw drinks to refill lines and flush the chlorine solution from the dispenser.

NOTE: Please note that a fresh water rinse cannot follow sanitization of equipment. Purge only with the end use product. This is an NSF requirement.

- I. Taste the beverage to verify that there is no off taste.

3.3 ALTERNATE CLEANING AND SANITIZING AGENTS

The above approach to cleaning and sanitizing is strongly recommended. However, the Division Quality Assurance Manager may approve the following cleaning and sanitizing agents.

- A. Chlorinated alkaline detergents. These compounds may be used as the cleaning agent, but may not be used as combined cleaner/sanitizer.
- B. Iodophors may be substituted for chlorine as the sanitizing agent.



WARNING IODOPHORS AND QUATERNARY AMMONIUM COMPOUNDS (QUATS) ARE BROAD CLASSES OF COMPOUNDS. SOME MEMBERS OF EACH GROUP CAN CAUSE SERIOUS PROBLEMS WITH FOAMING, DISTORTION OR DISCOLORATION OF POLYMERIC PARTS, POOR RINSIBILITY, AND OFF TASTE. THE RINSIBILITY AND OFF TASTE PROBLEMS HAVE BEEN ESPECIALLY PREVALENT WITH QUATS. BECAUSE OF THE POTENTIAL PROBLEMS, APPROVAL MUST BE GRANTED BY THE DIVISION QUALITY ASSURANCE MANAGER TO SPECIFIC COMPOUNDS. THIS APPROVAL SHOULD BE BASED UPON TESTING IN THE LABORATORY.

ADVERTENCIA YODÓFOROS Y COMPUESTOS DE AMONIO CUATERNARIO SON LAS CLASES MAESTRAS DE COMPUESTOS. ALGUNOS MIEMBROS DE CADA GRUPO PUEDE OCASIONARLE GRAVES PROBLEMAS EN ESPUMA, DISTORSIÓN O DECOLORACIÓN DE PIEZAS POLIMÉRICOS, RINSIBILITY POBRES Y OFF GUSTO. LOS RINSIBILITY Y OFF PROBLEMAS DE SABOR HAN SIDO ESPECIALMENTE FRECUENTES CON LOS COMPUESTOS DE AMONIO CUATERNARIO. DEBIDO A LA PROBLEMAS POTENCIALES, APROBACIÓN DEBE SER OTORGADA POR EL GERENTE DE ASEGURAMIENTO DE CALIDAD DIVISIÓN DE COMPUESTOS ESPECÍFICOS. ESTA APROBACIÓN DEBE BASARSE EN PRUEBAS EN EL LABORATORIO.

AVERTISSEMENT IODOPHORES ET COMPOSÉS D'AMMONIUM QUATERNAIRE (QUATS) SONT DES CLASSES GRANDES DE COMPOSÉS. CERTAINS MEMBRES DE CHAQUE GROUPE PEUT CAUSER DE GRAVES PROBLÈMES AVEC DE L'ÉCUME, DÉFORMATION OU DÉCOLORATION DES PIÈCES POLYMERES, RINÇABILITÉ PAUVRES ET OFF GOÛT. LES PROBLÈMES DE GOÛT ET RINÇABILITÉ, VOUS AVEZ ÉTÉ PARTICULIÈREMENT RÉPANDUE AVEC QUATS. EN RAISON DE LA PROBLÈMES POTENTIELS, APPROBATION DOIT ÊTRE ACCORDÉE PAR LE DIRECTEUR DE LA DIVISION ASSURANCE QUALITE DE COMPOSÉS SPÉCIFIQUES. CETTE APPROBATION DEVRAIT ÊTRE FONDÉES SUR DES TESTS EN LABORATOIRE.

- C. Quaternary ammonium compounds may be used as a combined cleaner-sanitizer but are generally not recommended. These compounds are not to be utilized at concentrations exceeding 100 PPM (100 mg/L), or that concentration specified in local regulations, which ever is lower.

4. CONNECTION FOR PLAIN WATER PRODUCT

- 4.1 If plain water product is required, a separate plain water manifold is utilized for easy connection to any of the three (3) valves on the left side of the dispenser. It may be necessary to loosen the screws on the carbonator pump plate to facilitate this changeover.
- 4.2 De-pressurize unit by disconnecting the water inlet.
- 4.3 Remove retaining clip from the fitting behind the faucet plate, and pull the soda line out of the fitting.
- 4.4 Remove the cap from the corresponding water line in the same manner.
- 4.5 Insert the water line into the fitting behind the water plate and replace the retaining clip.
- 4.6 Replace the cap onto the soda line and install the retaining clip.
- 4.7 Repeat for other valves if desired.
- 4.8 Re-tighten carbonator pump plate screws if loosened (see Step 4.1).

5.0 TROUBLESHOOTING

TROUBLE	CAUSE	REMEDY
5.1 Water leakage around nozzle.	A. Damaged or improperly installed o-ring above diffuser.	A. if damaged, replace. If improperly installed, adjust.
5.2 Miscellaneous leakage.	A. Gap between parts. B. Damaged or improperly installed o-rings.	A. Tighten appropriate retaining screws B. Replace or adjust appropriate o-rings
5.3 Insufficient water flow.	A. insufficient incoming supply water pressure. B. Shutoff on mounting block not fully open. C. Foreign debris in water flow control. D. Foreign debris in water pump strainer.	A. Verify incoming supply water pressure is a minimum of 25 PSI (0.172 MPA). B. Open shutoff fully. C. Remove water flow control from upper body and clean out any foreign material to ensure smooth free spool movement. D. Remove water pump strainer and clean.
5.4 Insufficient syrup flow.	A. Insufficient CO ₂ pressure to BIB pumps. B. Shutoff on mounting block not fully open. C. Foreign debris in syrup flow control.	A. Adjust CO ₂ pressure to 80 PSI (0.550 MPA) [minimum 70 PSI (0.480 MPA)] for BIB pumps. B. Open shutoff fully. C. Remove syrup flow control from upper body and clean out any foreign material to ensure smooth free spool movement.
5.5 Erratic ratio.	A. Incoming water and/or syrup supply not at minimum flowing pressure. B. Foreign debris in water and/or syrup flow controls.	A. Check pressure and adjust B. Remove flow controls from upper body and clean out any foreign material to ensure smooth free spool movement.

TROUBLE	CAUSE	REMEDY
5.6 No product dispensed	<p>A. Water and syrup shutoffs on mounting block not fully open.</p> <p>B. The key switch on an electric valve is in the OFF position.</p> <p>C. Cup lever arm or ID panel actuator on electric valve is not actuating the switch.</p> <p>D. Electric current not reaching valve.</p> <p>E. Improper or inadequate water or syrup supply.</p> <p>F. Transformer Failure</p>	<p>A. Open shutoff fully.</p> <p>B. Turn key switch to ON position.</p> <p>C. Repair</p> <p>D. Check electric current supplied to valve. If current is adequate, check solenoid coil and switch, and replace if necessary.</p> <p>E. Remove valve from mounting block and open shutoffs slightly and check water and syrup flow. If no flow, check dispenser for freeze-up or other problems</p> <p>F. Reset transformer circuit breaker. If breaker trips again, refer to Seciton 5.23</p>
5.7 Water only dispensed; no syrup; or syrup only dispensed, no water	<p>A. Water or syrup shutoff on mounting block not fully open.</p> <p>B. Improper or inadequate water or syrup flow.</p> <p>C. BIB supply too far from dispenser.</p> <p>D. CO2 pressure too low.</p> <p>E. Stalled or inoperative BIB pump</p> <p>F. Kinked line.</p>	<p>A. Open shutoff fully.</p> <p>B. Remove valve from mounting block, open shutoffs slightly and check water and syrup flow. If no flow, check dispenser for freeze-up or other problems. Ensure BIB connection is engaged.</p> <p>C. Check that BIB supply is within six (6) feet of the dispenser.</p> <p>D. Check the CO2 pressure to the pump manifold to ensure it is between 70 and 80 PSI.</p> <p>E. Check CO2 pressure and/or replace pump.</p> <p>F. Remove kink or replace line.</p>

TROUBLE	CAUSE	REMEDY
5.8 No water just syrup.	<p>A. Low level.</p> <p>B. Unit not level.</p> <p>C. Syrup in water bath.</p> <p>D. Water cage is out of position.</p> <p>E. PCB relay sticking.</p> <p>F. Refrigerant leak.</p> <p>G. Check water supply.</p> <p>H. Carbonator timed out.</p> <p>I. PCB malfunctioning.</p>	<p>A. Add water until it flows from overflow tube.</p> <p>B. Level unit and add water.</p> <p>C. Melt ice bank. Remove all water. Refill. Locate possible syrup leak area and repair.</p> <p>D. Align the water cage into the water tank studs.</p> <p>E. Check continuity of compressor relay. Compressor should time-out in five (5) minutes.</p> <p>F. Find leak and recharge unit. (If unit is not frozen.)</p> <p>G. Turn water ON and shut unit OFF,</p> <p>H. Turn unit OFF then ON to reset</p> <p>I. Replace PCB.</p>
5.9 Valve will not shut off.	<p>A. Cup lever may be sticking or binding.</p> <p>B. Switch not actuating freely.</p>	<p>A. Correct or replace lever.</p> <p>B. Check switch for free actuation.</p>
5.10 Syrup only dispensed. No water, but CO2 gas dispensed with syrup.	<p>A. Improper water flow to dispenser.</p> <p>B. Carbonator pump motor has timed out.</p> <p>C. Liquid level probe not connected properly to PCB.</p> <p>D. Faulty PCB assembly.</p> <p>E. Faulty liquid level probe.</p> <p>F. Water bath frozen.</p> <p>G. Water line frozen.</p>	<p>A. Check for water flow to dispenser (see 5.4).</p> <p>B. Reset by turning the unit OFF and then ON (by using the ON/OFF switch on top of the unit or unplugging unit momentarily).</p> <p>C. Check connections of liquid level probe to PCB assembly.</p> <p>D. Replace PCB assembly.</p> <p>E. Replace liquid level probe.</p> <p>F. Thaw water bath and repair faulty component. (See refrigeration related symptoms.)</p> <p>G. Refer to 5.13 listed below.</p>

TROUBLE	CAUSE	REMEDY
5.11 Excessive foaming.	<p>A. Incoming water or syrup temperature too high.</p> <p>B. CO2 pressure too high.</p> <p>C. Water flow rate too high.</p> <p>D. Nozzle and diffuser not installed.</p> <p>E. Nozzle and diffuser not clean.</p> <p>F. Air in BIB lines.</p> <p>G. Poor quality ice.</p> <p>H. High beverage temperature.</p>	<p>A. Correct prior to dispenser. Consider larger dispenser or pre-cooler.</p> <p>B. Adjust CO2 pressure downward, but not less than 70 PSI.</p> <p>C. Readjust and reset ratio. Refer to Section 1.18.</p> <p>D. Remove and reinstall properly.</p> <p>E. Remove and clean.</p> <p>F. Bleed air from BIB lines.</p> <p>G. Check quality of ice used in drink.</p> <p>H. Check refrigeration system.</p>
5.12 Water continually overflows from water bath into drip tray.	<p>A. Loose water connection(s).</p> <p>B. Flare seal washer leaks.</p> <p>C. Faulty water coil.</p>	<p>A. Tighten water connections.</p> <p>B. Replace flare seal washer.</p> <p>C. Replace water coil.</p>
5.13 Compressor starts and continues to run until freeze and will not cut off.	<p>A. PCB malfunctioning or faulty ice bank probe.</p> <p>B. Ice bank probe positioned improperly.</p> <p>C. Ice bank probe shorted to ground.</p>	<p>A. Disconnect ice bank probe from PCB.</p> <ol style="list-style-type: none"> 1. If compressor continues to run, replace PCB 2. If compressor stops replace ice bank probe <p>B. Check positioning of ice bank probe, and replace if needed.</p> <p>C. Replace ice bank probe.</p>
NOTE: First check to ensure that the 3 minute carbonator timer has not timed out. Turn unit off and then on. If the pump shuts off in less than 30 seconds the dispenser is not frozen.		
5.14 Warm drinks.	<p>A. Restricted airflow.</p> <p>B. Dispenser connected to hot water supply.</p> <p>C. Refrigeration system not running.</p> <p>D. Refrigerant leak.</p> <p>E. Condenser fan motor not working.</p> <p>F. Dirty condenser.</p> <p>G. Dispenser capacity exceeded.</p>	<p>A. Check clearances around sides, top, and inlet of unit. Remove objects blocking airflow through grill.</p> <p>B. Switch to cold water supply.</p> <p>C. Refer to 5.16 - 5.20.correct relay will cause compressor failure.</p> <p>D. Repair and recharge.</p> <p>E. Replace condenser fan motor.</p> <p>F. Clean condenser.</p> <p>G. Add pre-cooler or replace with larger dispenser.</p>

TROUBLE	CAUSE	REMEDY
<p>5.15 Compressor does not start (no hum), gas cooler fan does not run, and no ice bank.</p>	<p>A. There is a five (5) minute compressor and condenser fan delay.</p> <p>B. Ice bank probe not completely submerged or not sensing water.</p> <p>C. Circuit breaker or fuse tripped.</p> <p>D. Inadequate Voltage</p> <p>E. PCB malfunctioning</p> <p>F. Incorrect Wiring</p> <p>G. Faulty ice bank probe.</p> <p>H. Transformer failure.</p> <p>I. Ice bank probe not connected properly to PCB.</p>	<p>A. Allow for five (5) minute delay to lapse.</p> <p>B. Fill water reservoir until water flows from overflow tube.</p> <p>C. Reset breaker or replace fuse. If problem persists: 1. Determine reason and correct. 2. Electrical circuit overloaded; switch to another circuit.</p> <p>D. Measure voltage across common and run terminal on compressor. Voltage must not drop below 90% of rated voltage.</p> <p>E. Replace PCB assembly</p> <p>F. Refer to wiring diagram and correct.</p> <p>G. Replace ice bank probe.</p> <p>H. Reset transformer circuit breaker. If breaker pops again, refer to Sec. 5.25.</p> <p>I. Connect ice bank probe to PCB.</p>
<p>5.16 Compressor does no start (no hum), but condenser fan motor runs.</p>	<p>A. Compressor relay capacitors or overload malfunctioning.</p> <p>B. Inadequate voltage.</p> <p>C. Incorrect wiring.</p> <p>D. Compressor malfunctioning.</p>	<p>A. Replace compressor relay capacitors or overload.</p> <p>B. Measure voltage across commom and run terminal on compressor. Voltage must not drop below 90% of rated voltage.</p> <p>C. Refer to wiring diagram and correct.</p> <p>D. Replace compressor or deck.</p>

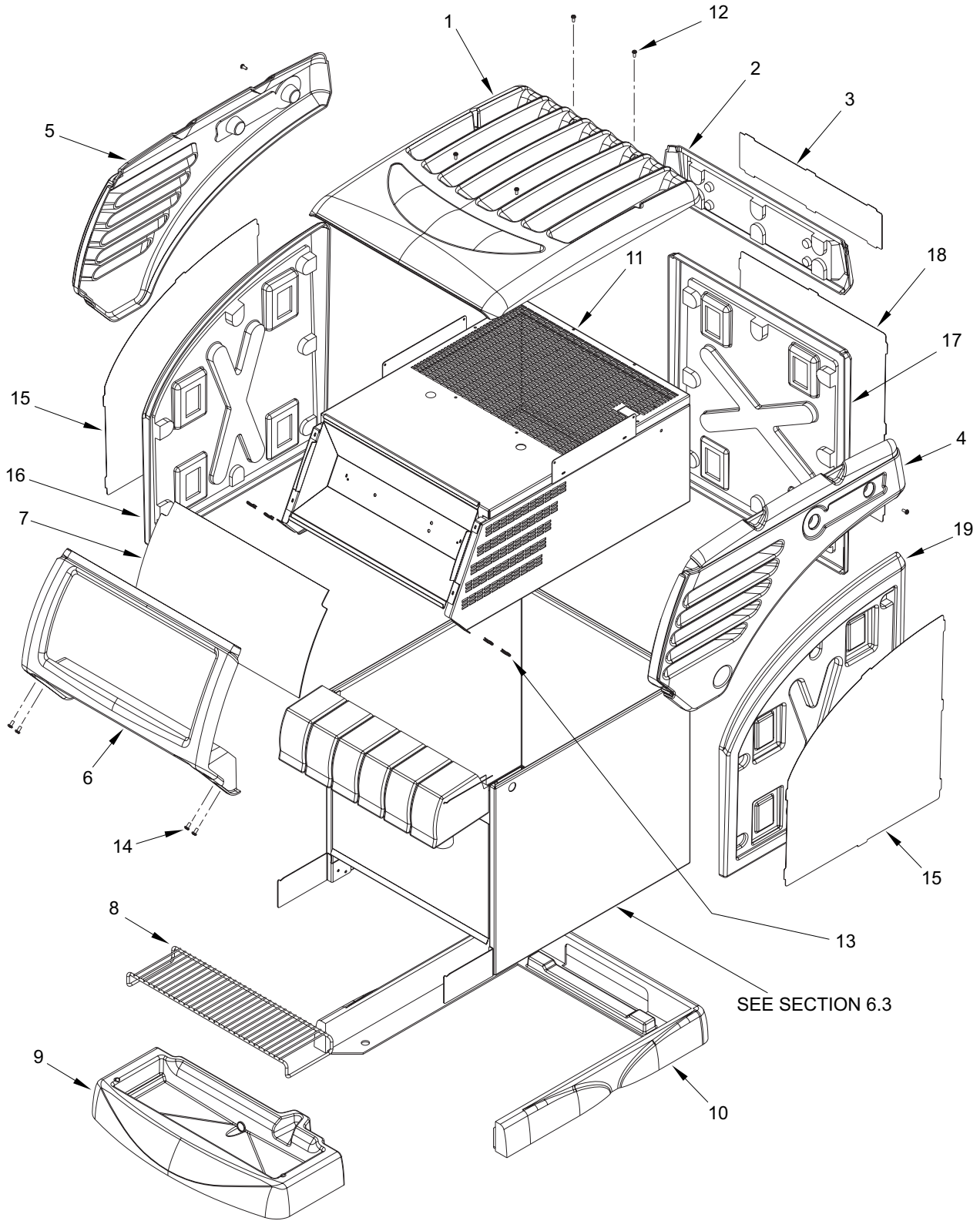
TROUBLE	CAUSE	REMEDY
5.17 Compressor does not start but hums.	<p>A. Inadequate voltage.</p> <p>B. Incorrect wiring.</p> <p>C. Starting relay capacitors malfunctioning.</p> <p>D. Compressor malfunctioning.</p>	<p>A. Measure voltage across common and run terminal on compressor. Voltage must not drop below 90% of rated voltage.</p> <p>B. Refer to wiring diagram and correct.</p> <p>C. Replace starting relay or capacitors. Be sure to use correct rating. Failure to use correct rating will cause compressor failure.</p> <p>D. Replace compressor or deck.</p>
5.18 Compressor starts but does not switch off start winding (will run for only a few seconds before internal overload switches compressor off).	<p>A. Inadequate voltage.</p> <p>B. Incorrect wiring.</p> <p>C. Starting relay malfunctioning.</p>	<p>A. Measure voltage across common and run terminal on compressor. Voltage must not drop below 90% of rated voltage.</p> <p>B. Refer to wiring diagram and correct.</p> <p>C. Replace starting relay. Be sure to use correct relay. Failure to use correct relay will cause compressor failure.</p>
5.19 Compressor starts and runs a short time but shuts off on overload.	<p>A. Dirty condenser.</p> <p>B. Insufficient or blocked air flow.</p> <p>C. Inadequate voltage.</p> <p>D. Incorrect wiring.</p> <p>E. Defective condenser fan motor.</p> <p>F. Refrigerant leak.</p> <p>G. Compressor malfunctioning.</p>	<p>A. Clean the condenser.</p> <p>B. Remove all obstructions and allow for minimum clearances of 8 inches (203 mm) over top.</p> <p>C. Measure voltage across common and run terminal on compressor. Voltage must not drop below 90% of rated voltage.</p> <p>D. Refer to wiring diagram and correct.</p> <p>E. Replace condenser fan motor.</p> <p>F. Repair and recharge.</p> <p>G. Replace compressor.</p>
5.20 Compressor runs normally, but water line is frozen.	<p>A. Low water level in water bath.</p> <p>B. Syrup in water bath.</p> <p>C. Water cage is out of position.</p> <p>D. Low refrigerant charge or slow refrigerant leak.</p>	<p>A. Add water to water bath until water runs out of overflow into drip tray.</p> <p>B. Drain water from water bath and refill with clean water.</p> <p>C. Reposition water cage.</p> <p>D. Find and repair leak. Recharge system.</p>

TROUBLE	CAUSE	REMEDY
5.21 Compressor cycles on and off frequently during the initial pulldown and/or normal operations.	<p>A. PCB malfunctioning</p> <p>B. Defective probe.</p>	<p>A. Replace PCB assembly.</p> <p>B. Replace probe.</p>
5.22 Transformer circuit breaker tripping.	<p>A. Valve wire harness shorted to itself or to faucet plate.</p> <p>B. PCB is bad.</p> <p>C. Secondary wire harness is bad.</p> <p>D. Transformer failure.</p>	<p>A. Detect short by disconnecting input faston to keylock and single pin connector. Restore power if breaker doesn't trip. Then valve wire harness is shorted. If OK, reconnect.</p> <p>B. Detect short by disconnecting J1 connector (24 VAC input) from PCB. Restore power, if breaker doesn't trip. Then replace PCB. If breaker does trip, then PCB is OK. Reconnect J1 connector.</p> <p>C. If it does not trip, locate short in secondary harness between transformer, PCB, and valve wire harness.</p> <p>D. Detect short by disconnecting both transformerfastons and restore power. If breaker does trip, replace transformer.</p>
5.23 BIB pump does not operate when dispensing valve opened.	<p>A. Out of CO2, CO2 not turned on, or low CO2 pressure.</p> <p>B. Out of syrup.</p> <p>C. BIB connector not tight.</p> <p>D. Kinks in syrup or gas lines.</p>	<p>A. Replace CO2 supply, turn on CO2 supply, or adjust CO2 pressure to 70-80 PSI (0.483-0.552 MPA)</p> <p>B. Replace syrup supply.</p> <p>C. Fasten connector tightly.</p> <p>D. Straighten or replace lines.</p>
5.24 BIB pump operated, but no flow.	<p>A. Leak in syrup inlet or outlet line.</p> <p>B. Defective BIB pump check valve.</p>	<p>A. Replace line.</p> <p>B. Replace BIB pump</p>
5.25 BIB pump continues to operate when bag is empty.	<p>A. Leak in suction line.</p> <p>B. Leaking o-ring on pump inlet fitting.</p>	<p>A. Replace line.</p> <p>B. Replace o-ring.</p>
5.26 BIB pump fails to restart after bag replacement.	<p>A. BIB connector not on tight.</p> <p>B. BIB connector is stopped up.</p> <p>C. Kinks in syrup line</p>	<p>A. Tighten BIB connector.</p> <p>B. Clean out or replace BIB connector.</p> <p>C. Straighten or replace line.</p>

TROUBLE	CAUSE	REMEDY
5.27 BIB pump fails to restart when dispensing valve is closed.	A. Leak in discharge line or fittings. B. Empty BIB. C. Air leak on inlet line or bag connector.	A. Repair or replace discharge B. Replace BIB. C. Repair or replace.
5.28 Low or no carbonation.	A. Low or no CO ₂ . B. Excessive water pressure. C. Worn or defective carbonator pump.	A. Check CO ₂ supply. Adjust CO ₂ pressure to 70 PSI (0.483 MPA). B. Water regulator should be set at 50 PSI (0.345 MPA) C. Replace carbonator pump.

6. ILLUSTRATIONS, PARTS LISTINGS, WIRING DIAGRAMS, AND PLUMBING DIAGRAMMS

6.1 MAX II ASSEMBLY



6.1 MAX II ASSEMBLY (CONTINUED)

<u>Item</u>	<u>Part No.</u>	<u>Description</u>
1	05-2381	Top Cover, Bonnet
2	05-2384	Back, Bonnet
3	05-2390	Lens, Flavor Label
4	05-2383	Side, Right, Bonnet
5	05-2382	Side, Left, Bonnet
6	05-2385	Trim, Marquee
7	05-2386	Lens, Marquee
8	23-0483	Cup Rest
9	54-2394	Drip Tray Assy
10	05-2388	Base, Wrapper
11	82-3626	Bonnet Assy, Max II
12	04-0406	Screw, 8 - 32 x 0.375
13	04-0074	Nut Clip, 10 - 24
14	04-0236	Screw, 10 - 24 x 0.375

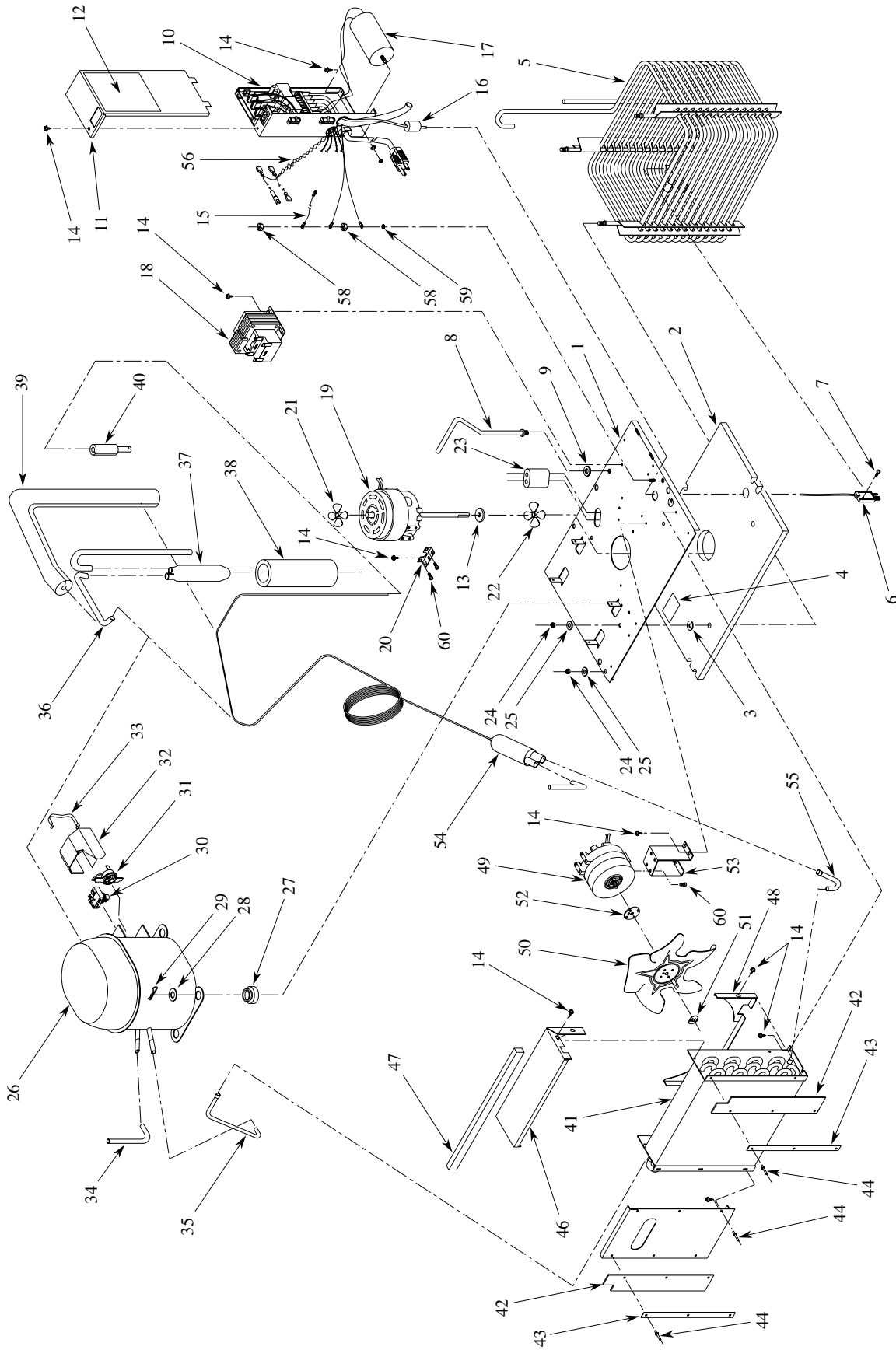
OPTIONAL MERCHANDISING PANELS:

15	05-2389	Lens, Wrapper, Left and Right
16	05-2391	Wrapper, Left
17	05-2393	Wrapper, Back
18	05-2394	Lens, Wrapper, Back
19	05-2392	Wrapper, Right

(Not Shown)

-	05-0786	Plug, Bonnet
-	52-1754/01	PCB Assy, Lamp Driver
-	12-0225	Bi-Pin Lampholder
-	11-0017	Splice, Wire
-	11-0011	Terminal, Female, 18 AWG
-	05-1678	Standoff, PCB
-	12-0047/02	Lamp, F8T5/D
-	04-0429	Rivet, AD-34-BS, for Lampholder
-	52-2113/01	Lead Assy, Extension, Marquee
-	11-0015	Housing, 2 Socket, Male

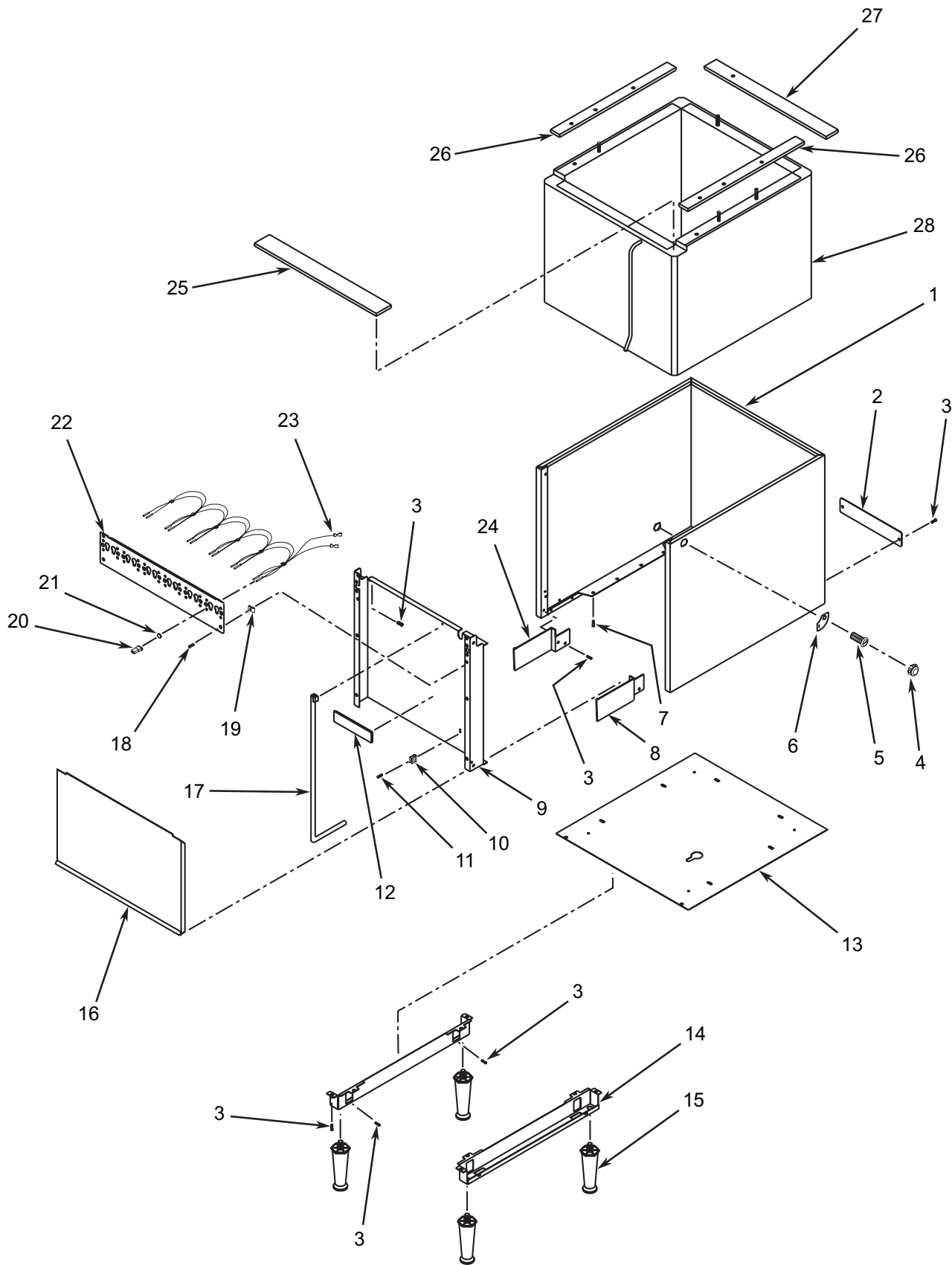
6.2 REFRIGERATION DECK ASSEMBLY



6.2 REFRIGERATION DECK ASSEMBLY (CONTINUED)

<u>Item</u>	<u>Part No.</u>	<u>Description</u>	<u>Item</u>	<u>Part No.</u>	<u>Description</u>
-	82-1248/02	Deck Assy Refrig, R-134a, 230V/50Hz, Export	29	03-0150	Retainer, Clip
-	82-1428/02	Deck Assy Refrig, R-134a, 115V/60Hz, Domestic	30	Ref	Relay
1	51-5107/01	Sub-Assy, Compressor Deck	-	12-0005	Relay, 115V/60Hz
2	50-0200/01	Insulation, Compressor Deck	-	12-0031	Relay, 230V/50-60Hz
3	04-0063	Washer, Flat	31	REF	Overload
4	89-0014	Cover, Hole	-	12-0339	Overload, 115V/60Hz
5	82-1373/01	Evaporator Coil, R134a	-	12-0290	Overload, 230V/50-60Hz
6	52-1773/01	Probe Assy, IBC	32	13-0066	Cover Terminal
7	04-0394	Screw, 6 - 32 x 0.500	33	03-0040	Bale Strap
8	51-0068	Handle	34	47-0344	Tube, Process
9	04-0574	Washer	35	47-0718	Tube, Compressor (Hi Side)
10	52-0903/02	Control Housing Assy	36	47-0724	Tube, Return (Lo Side)
11	30-5118	Cover, Control Housing	37	51-0061	Accumulator
12	06-2221	Label, Wiring Diagram	38	50-0211	Boot
13	02-0032	Washer	39	50-0205	Insulation, Tube
14	04-0504	Screw, 8 - 18 x 0.375	40	50-0159	Insulation, Tube
15	52-1209	Lead Assy, Ground	41	23-0985	Condenser
16	02-0041	Seal	42	50-0201	Baffle, Condenser
17	REF	Capacitor, Carbonator	43	30-5112	Plate, Retainer
-	26-0374	Capacitor, Carbonator, 115V/60Hz	44	04-0518	Rivet, 0.1250 x 0.328
-	26-0377	Capacitor, Carbonator, 230V/50-60Hz	45	30-5867	Shield, Air, Left
18	REF	Transformer	46	30-5865/01	Shroud, Fan Top
-	25-0047	Transformer, 115V/60Hz	47	50-0249	Barrier, long
-	25-0048	Transformer, 230V/50-60Hz	48	30-5866	Shroud, Fan, Bottom
19	REF	Motor, Assy	49	REF	Motor, Fan
-	52-1262	Motor, Assy, 230V/50Hz-60Hz	-	91-0007	Motor, Fan, 115V/60Hz
-	52-1261	Motor, Assy, 115V/60Hz	-	91-0009	Motor, Fan, 230V/50-60Hz
20	30-5113	Bracket, Agitator	50	07-0354	Fan Blade
21	05-0495	Propeller, 2.062 Dia.	51	04-0060	Nut
22	05-0502	Propeller, 2.250 Dia.	52	02-0413	Silencer
23	02-0040	Seal, Extrusion	53	30-5864	Bracket, Fan Motor
24	04-0032	Nut, Nylok, 1/4 - 20	54	23-0765	Dryer Cap Assy
25	04-0033	Washer, Flat (0.281 ID)	55	47-0698	Tube, Condenser Out
26	83-0033	Compressor, R-134a, 115V/60Hz, Domestic	56	52-2008	Harness Assy, Secondary
-	83-0034	Compressor, R-134a, 230V/50Hz, Export	57	04-0110	Nut, 8 - 32
27	02-0114	Grommet	58	04-0576	Washer, Int., Tooth
28	04-0537	Washer, Flat (0.467 ID)	59	06-0877	Label, Ground
			60	04-0059	Screw, 8 - 36 x 0.375

6.3 CABINET ASSEMBLY

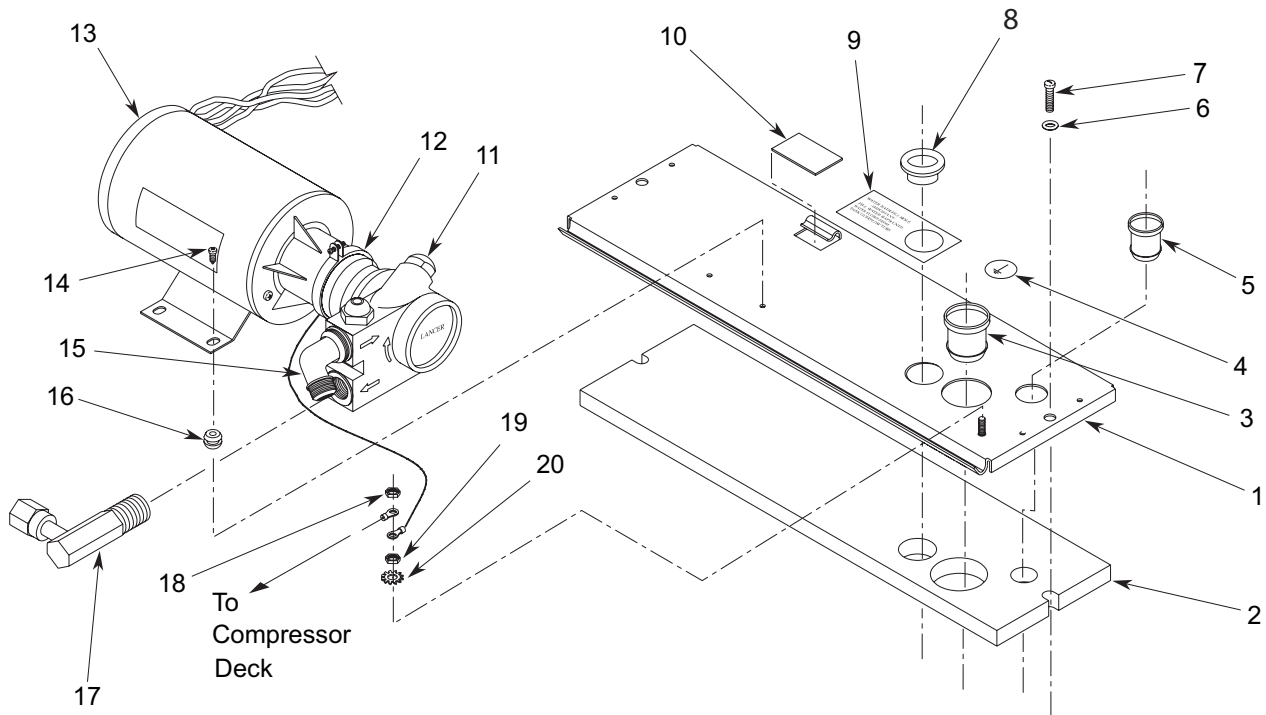


6.3 CABINET ASSEMBLY (CONTINUED)

<u>Item</u>	<u>Part No.</u>	<u>Description</u>
R –	82-3586	Cabinet Assy, Delta II
1	51-0675/01	Wrapper Assy
R 2	07-0347	Cover Plate
R 3	04-0504	Screw, 8 - 18 x 0.375 AB
R 4	07-0405	Plug, Key Lock
R 5	12-0097	Key Switch
R 6	06-0881	Label, Key Switch
R 7	04-0545	Screw, 8 - 16 x 0.780 Plastite
R 8	30-0587	Bracket, Right
9	30-5114/02	Front Plate
R 10	03-0062	Clip, Retaining
R 11	04-0077	Screw, 4 - 20 x 0.250 AB
R 12	06-0851	Label, Overflow
R 13	30-5850	Plate, Bottom
R 14	30-5221/02	Leg Bracket Assy
R 15	81-0112	Legs
R 16	30-0319	Splash Plate
R 17	82-1312	Drain Assy
R 18	04-0068	Screw, 10 - 24 x 0.375 FH, Machine
R 19	04-0074	Nut, Clip
R 20	11-0015	Socket, Housing
R 21	13-0005	Bushing
R 22	30-5125	Faucet Plate, 6 valve
R 23	52-1214	Harness Assy, 6 valve (6 each, Item 12 & 13)
R 24	30-0588	Bracket, Left
R 25	50-0248	Insulation, Front
R 26	50-0151	Insulation, Side, Left and Right
R 27	50-0150	Insulation, Rear
R 28	82-3584	Tank Assy, Foamed

R in margin indicates new, changed, or realigned information

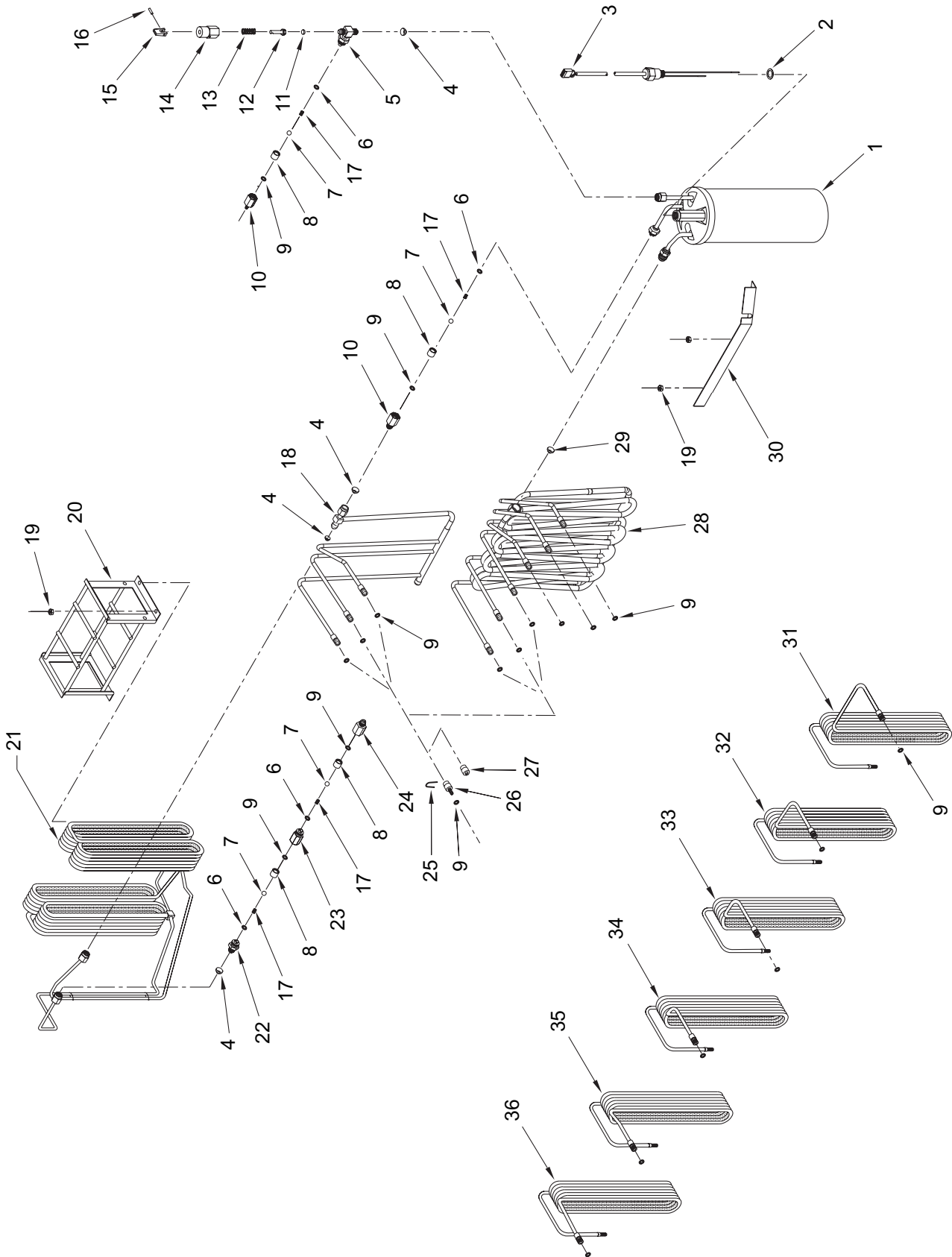
6.4 CARBONATOR DECK ASSEMBLY



<u>Item</u>	<u>Part No.</u>	<u>Description</u>	<u>Item</u>	<u>Part No.</u>	<u>Description</u>
-	82-0887/01	Deck Assy, Carbonator, 115V/60Hz	R 13	REF	Carbonator Motor
-	82-0943/01	Deck Assy, Carbonator, 220V/50-60 Hz	-	91-0063	Carbonator Motor, 115V/60Hz
1	51-5122	Plate Assy, Carbonator Deck	-	91-0065	Carbonator Motor 220V/50-60Hz
R 2	50-0247	Insulation, Carbonator Deck	R 14	04-0061	Screw, 8-18 X 0.500 AB
R 3	05-0435	Sleeve, CO2 In	R 15	01-0987	Elbow, Brass
R 4	06-0877	Ground Label	R 16	02-0194	Grommet, 250 OD X 0.156 ID X 0.049 W
R 5	05-0436	Sleeve, Probe	R 17	01-1515	Pump outlet Assy
R 6	04-0033	Washer, 1/4"	R 18	REF	Lead Assy, Ground (Compressor Deck to Carbonator Deck)
R 7	04-0334	Screw, 1/4 - 20 X 1.000, Round Head	R 19	04-0110	Nut, No. 8 - 32
R 8	04-0711	Caplug	R 20	04-0576	Washer, No. 8 Internal Tooth
R 9	06-0856	Water Fill Label			
R 10	89-0014	Cover, Hole			
11	86-0085	Pump, 100 GPH			
R 12	07-0017	Clamp with Screw			

R in margin indicates new, changed, or realigned information

6.6 CARBONATOR, WATER/SYRUP LINE ASSEMBLIES

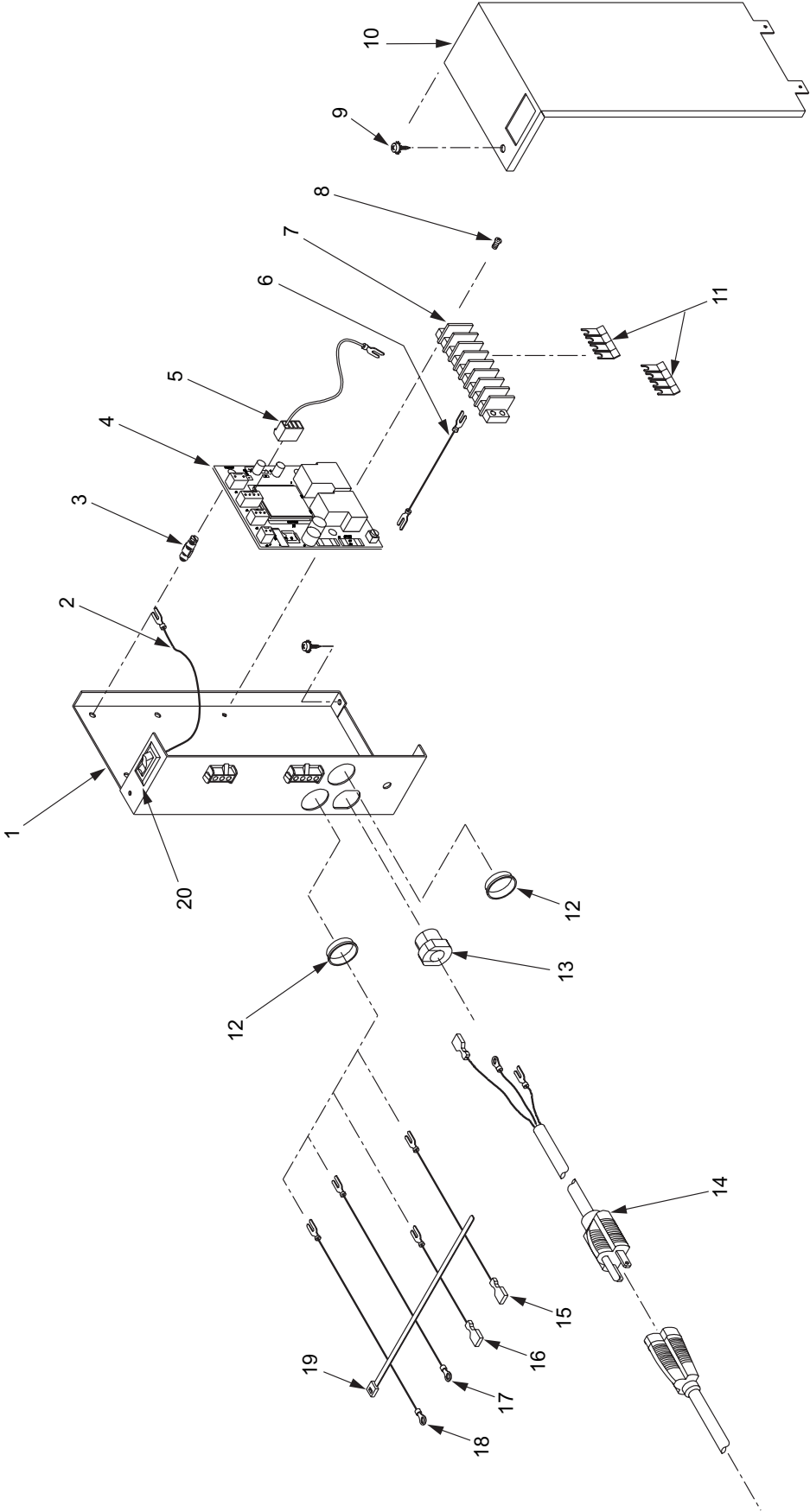


6.6 CARBONATOR, WATER/SYRUP LINE ASSEMBLIES (CONTINUED)

<u>Item</u>	<u>Part No.</u>	<u>Description</u>	<u>Item</u>	<u>Part No.</u>	<u>Description</u>
R 1	82-3566	Carbonator Assy	R 25	03-0153	Retainer, Adapter
2	02-0096	Washer	R 26	05-2256	Adapter, Dole to Dole
R 3	52-2892	Probe Assy	R 27	05-1580	Adapter, Cap, Long
-	17-0469	Fitting Assy, CO2 IN	R 28	48-2329	Manifold Assy, Carbonated Water
R 4	05-0011	Flare Seal Washer, 7/16"			
R 5	01-1311	Fitting Sub Assy, CO2 IN	R 29	05-0017	Flare Seal, 3/8
R 6	02-0003	O-Ring	R 30	30-9435	Bracket, Syrup line
7	01-0674	Ball	R 31	48-2323	Tube Assy, Syrup, No. 1
R 8	01-0689	Sleeve	R 32	48-2324	Tube Assy, Syrup, No. 2
R 9	02-0005	O-Ring	R 33	48-2325	Tube Assy, Syrup, No. 3
R 10	01-0669	Body, Check Valve, 7/16", MF	R 34	48-2326	Tube Assy, Syrup, No. 4
R -	54-0066	Relief Valve Assy	R 35	48-2327	Tube Assy, Syrup No. 5
R 11	02-0023	Seal	R 36	48-2328	Tube Assy, Syrup, No. 6
R 12	05-0536	Stem			
R 13	03-0024/02	Spring			
R 14	05-0537	Body, Relief Valve			
R 15	05-0525	Lever			
R 16	81-0196	Pin			
R 17	03-0021	Spring			
R 18	48-2374	Manifold Assy, Plain Water Out			
R 19	04-0082	Nut, 10-24			
R -	23-1388	Water Cage Assy			
R 20	23-0767	Cage Assy, Water			
R 21	48-2375	Tube Assy, Water			
R -	17-0485	Double Check Valve Assy			
R 22	01-1466	Fitting, Check Valve			
R 23	01-0670	Body, Check Valve, Middle			
R 24	01-0673	Body, Check Valve, 3/8, MF			

R in margin indicates new, changed, or realigned information

6.7 CONTROL HOUSING (ALSO SEE SECTION 6.8, WIRING DIAGRAM)



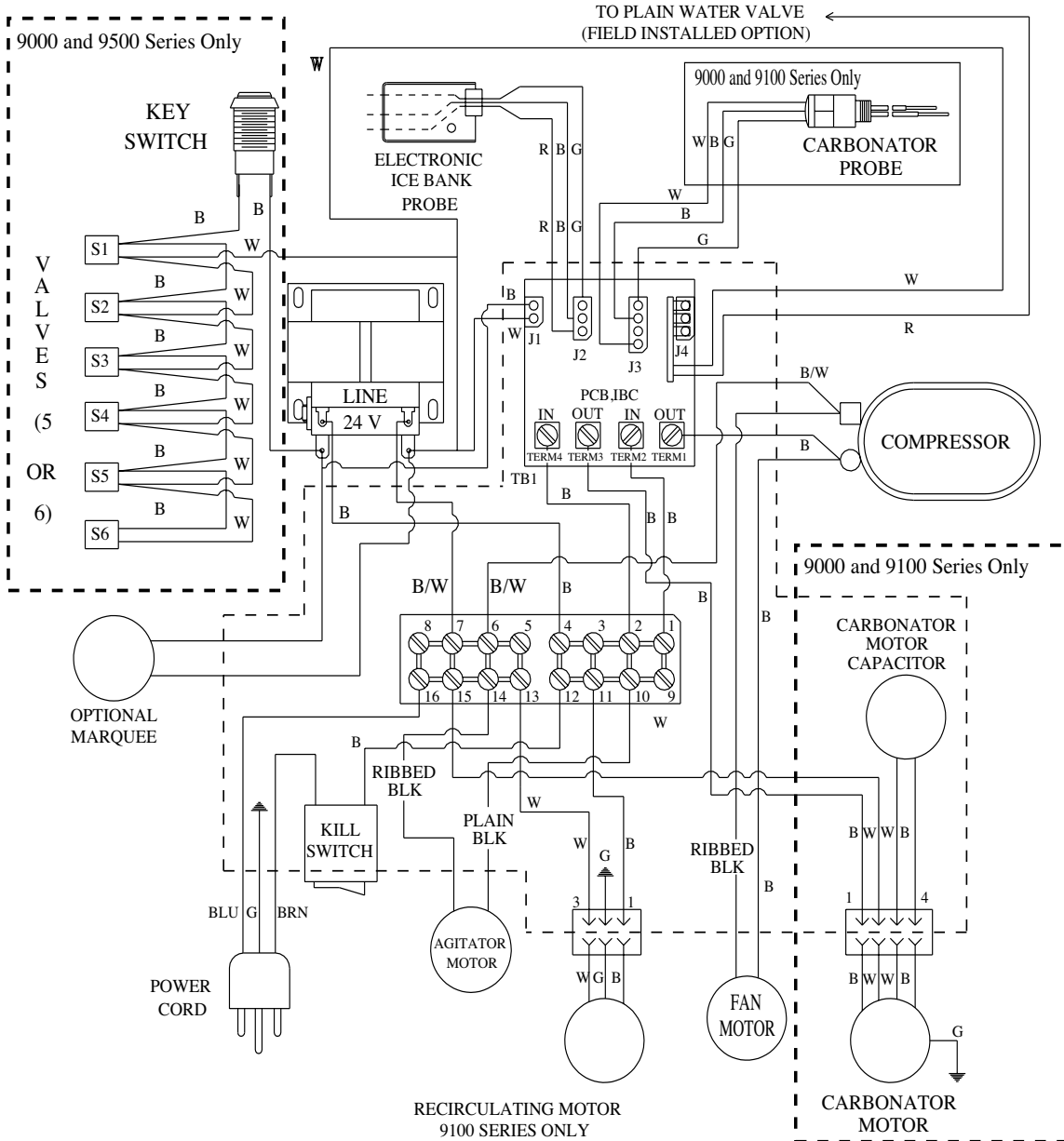
6.7 CONTROL HOUSING (ALSO SEE SECTION 6.8, WIRING DIAGRAM) (CONTINUED)

<u>Item</u>	<u>Part No.</u>	<u>Description</u>
-	52-0900/02	Control Housing, With ON/OFF Switch
-	52-0903/02	Control Housing, Without Kill Switch
1	30-5109/02	Control Housing
2	52-0868/01	Lead Assy, ON/OFF Switch
3	13-0047	Stand-off
4	52-1423/01	PCB Assy
R 5	52-2027/01	Lead Assy, Probe Ground (Non-Carb Units Only)
6	52-2061	Lead Assy, EIBC
7	12-0190	Terminal Block
8	04-0477	Screw, 8 - 32 X 0.375"
9	04-0504	Screw, 8 - 16 X 0.375"
10	30-5108/01	Cover, Control Box
11	11-0186	Jumper, 4-Position
12	13-0059	Bushing
13	13-0028	Strain Relief
14	52-1219	Power Cord (Pigtail)
15	52-0904	Harness Assy, Trans #1
16	52-0905	Harness Assy, Trans #2
17	52-0906	Harness Assy, Comp #1
18	52-0907	Harness Assy, Comp #2
19	11-0008	Tie Wrap
20	12-0089	Switch

6.8 WIRING DIAGRAM

IMPORTANT

1. WHEN STARTING UNIT OR IF CURRENT IS INTERRUPTED, THERE IS A FIVE (5) MINUTE DELAY BEFORE THE COMPRESSOR/FAN STARTS.
2. THERE IS A THREE (3) MINUTE PROTECTION TIMER ON THE CARBONATOR PUMP MOTOR. IF THE MOTOR HAS TIMED OUT, CHECK WATER SUPPLY AND RESET BY MOMENTARILY DISCONNECTING POWER.



SYM.	DESCRIPTION
	CHASSIS GROUND
	CHAMFER PIN
	OPTIONAL WATER BOOST PCB, IBC J4
	CONTROL BOX

LANCER_®

LABEL, WIRING DIAGRAM
06-2221

7. DISPENSER DISPOSAL



To prevent possible harm to the environment from improper disposal, recycle the unit by locating an authorized recycler or contact the retailer where the product was purchased. Comply with local regulations regarding disposal of the refrigerant and insulation.

LANCER[®]

Lancer Corp.

800-729-1500

Technical Support/Warranty: 800-729-1550

custserv@lancercorp.com

lancercorp.com