



An Employee Owned Company

206 Leer Street
New Lisbon, WI 53950

WALK-IN COOLER AND FREEZER
INFORMATION, INSTALLATION
AND
MAINTENANCE MANUAL

IF ADDITIONAL INFORMATION IS NEEDED PLEASE CONTACT YOUR LOCAL
REPRESENTATIVE OR CONTACT LEER WALK-IN ENGINEERING OR SALES DEPARTMENT
1-888-766-5337.

TOOLS AND SUPPLIES GENERALLY REQUIRED

SOME OF THE TOOLS LISTED BELOW MAY BE REQUIRED FOR SPECIFIC TYPES OF INSTALLATIONS DEPENDING ON IF THE WALK-IN IS SUPPLIED WITH A FLOOR, VINYL SCREED OR FLAT BOTTOM SIDEWALLS. IF YOU ARE UNSURE OR HAVE ANY QUESTIONS, CONTACT LEER'S WALK-IN ENGINEERING OR SALES DEPARTMENT.

- * TAPE MEASURE * 4' LEVEL * CHALK LINE * MITER SAW
- * SCREWDRIVERS * SHIMS * LAG ANCHORS OR SUITABLE FASTENERS
- * HAMMER * RAM SET GUN * POWER DRILL

- NSF LISTED SILICONE SEALANT AND CAM-LOCK WRENCH ARE PROVIDED -



NOTICE: CONCRETE AND TILE WORKERS

The sheet metal facings inside this Walk-In may be susceptible to staining or oxidation due to excessive moisture created by hydration of concrete type materials. Also note that extra care must be taken when using muriatic acid or other harsh cleaning materials on the inside or outside of this Walk-In. It is extremely important that the Walk-In door is left open and properly ventilated while the concrete is curing.

TABLE OF CONTENTS



- SHIPMENT INFORMATION & JOB SITE PREPARATION3
- JOB SITE, WALK-IN LAYOUT (Marking Walk-in Outlines)4-6
- OUTDOOR MEMBRANE ROOF CAP (Reference Drawing)7
- FLOOR SCREED & THRESHOLD (Reference Drawing)8-9
- FLOORLESS Z-ANGLE (Reference Drawing)10-11
- SKID STRIPES12
- PANEL & CAM LOCK INFORMATION (How to Lock Panels)13
- WALK-IN ASSEMBLY (Reference Drawing)14
- CEILING SUPPORTS (Options)15
- REFRIGERATION (Reference Drawing)16
- ELECTRICAL (Reference Drawing)17
- GENERAL MAINTENANCE (Thermometer Calibration).....18-19
- DOOR GASKET/WIPER/HEAT WIRE INSTALLATION.....20-23
- PRODUCT WARRANTY INFORMATION24

USE THESE SAFETY TIPS

To avoid injury while assembling the Walk-In, Leer recommends protective eye gear, hard hat, gloves and steel toe foot wear.

Prevent back injuries. Walk-In panels are heavy and care should be taken using ergonomic lifting and handling methods.

Any electrical work should be done by a licensed electrician.

Any refrigeration work should be done by licensed refrigeration company.

Never work alone. Always have another person helping or observing in case of an emergency.

Follow installation instruction pages. The information is designed to assist the correct method of walk-in assembly.

If unsure about something, contact your local representative or Leer Walk-In engineering or sales department at 1-888-766-5337.



GENERAL SHIPMENT INFORMATION

This Walk-In has been thoroughly inspected, packing list checked and carefully packaged before shipment. Any damages, whether obvious or hidden, must be reported to the freight carrier immediately. Damages not reported could void all freight claims. If the damage is obvious, write the words “received damaged” on the freight bill and have the driver sign the freight bill. Leave the item “as is” and notify the freight carrier local office and ask for an immediate inspection of the item. After receiving carrier inspection and damage report, notify Leer about action required to correct the problem. Please provide purchase order number, Leer serial and invoice number to assist claim process.

The packing list should be checked to be sure there are no shortages. Once the freight bill has been signed and accepted, there is no recovery from the freight carrier or Leer. If there are any questions regarding the shipment, please contact Leer immediately. It is consignee responsibility to follow these instructions or the carrier will not honor any claims for damage or shortage.

Notice: If the Walk-In will not or cannot be installed when received, panels should be stored on a flat surface in a clean, dry, temperature maintained location. Keep panels covered to prevent moisture or condensation from entering stacked panels. Avoid placing heavy objects on panels and shade panels with protective film from direct sunlight. Carefully remove film cover after panel assembly.

JOB SITE INSPECTION AND PREPARATION

A clean and clear area with access for getting the walk-in into the site is the first step for site preparation. The installer must determine the best and safest way to get the panels to the installation site without damage or bodily injury.

Check overhead for anything that could cause a safety hazard (electrical wires, utility lines, air ducting) or any other obstructions. It should be confirmed that there is enough overhead clearance to install the Walk-In. A minimum of 2” is recommended clearance between existing walls and walk-in panels to allow for any irregularities and ventilation.

A level floor is most important for proper installation of the walk-in even if the walk-in is supplied with a floor. The high point of the floor must be determined and shims (customer provided) must be used as required to assure the walk-in floor or screeds are level. *IMPORTANT:* If the floor is not level, wall panels will not be plumb and self-closing door may not close as designed.

Make sure the correct electrical voltage and circuit breakers are available for the walk-in electrical components and refrigeration system. The voltage and breaker sizes must match the components or serious damage can occur to the equipment or injury to the installer. Improper voltage or wiring will not be covered by Leer’s warranty.

JOB SITE PREPARATION AND LAYOUT

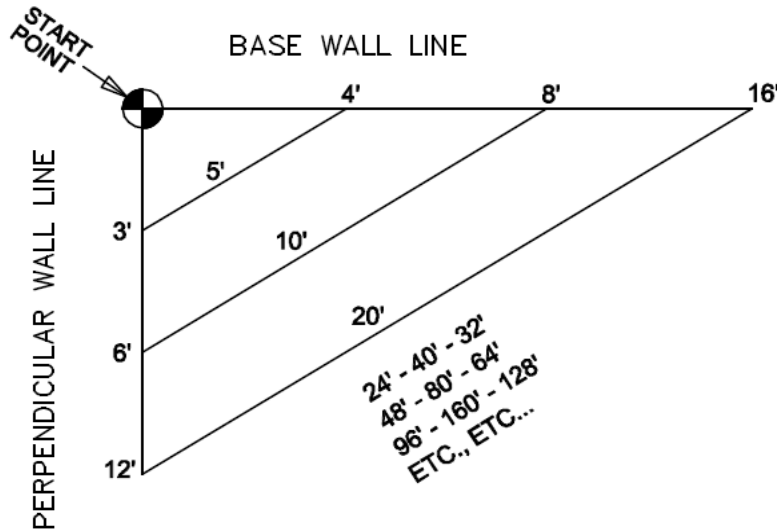


Finished floor before installation is to be flat and level to ensure a proper seal of Walk-In panels and doors.

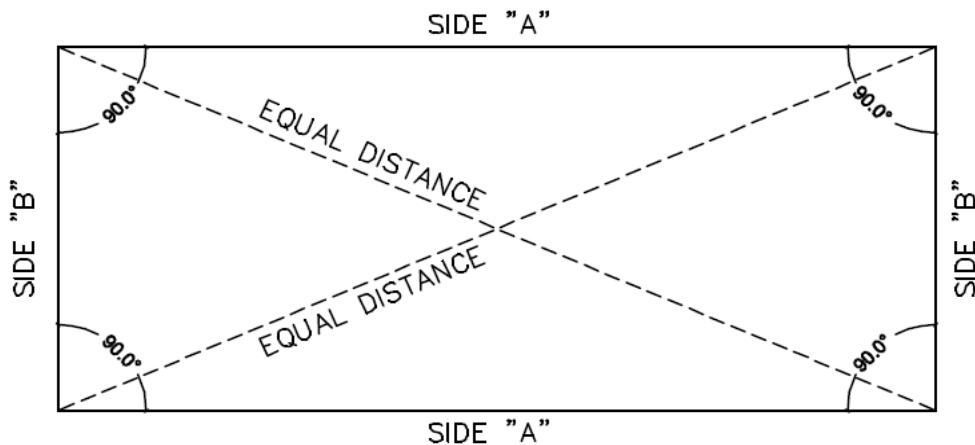
It is extremely important the Walk-In is installed both level and square. A few extra minutes to level and square the Walk-In before installation will save time when assembling the panels together.

Remember that Leer recommends a 2" – 4" minimum clearance around all four walls of the Walk-In.

Make a chalk line on the floor that represents the "START POINT" base wall line. The base wall line can be the front, rear or sides of the Walk-In depending on the installers preference and site conditions



After a square corner is established, continue with the other layout lines. After all layout lines are completed, check the squareness by measuring diagonally from corner to corner. If the two measurements are not the same, make adjustments at this time.



The layout lines now established represent the exterior dimensions of the Walk-in. The Walk-In floor panels can now be set in place. If Vinyl Screed, Foamed Screed or Flat Bottom panel support angles are used to hold the sidewalls in place, (See page #5 and #6 for floor and floorless layouts).

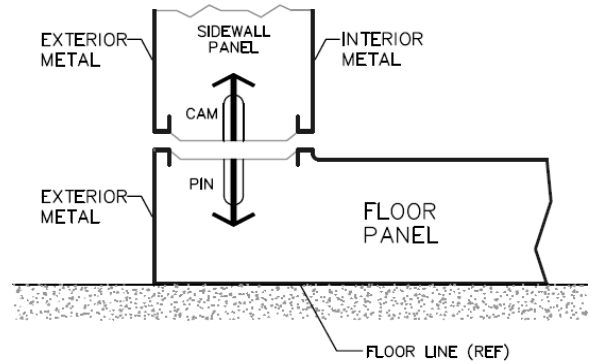
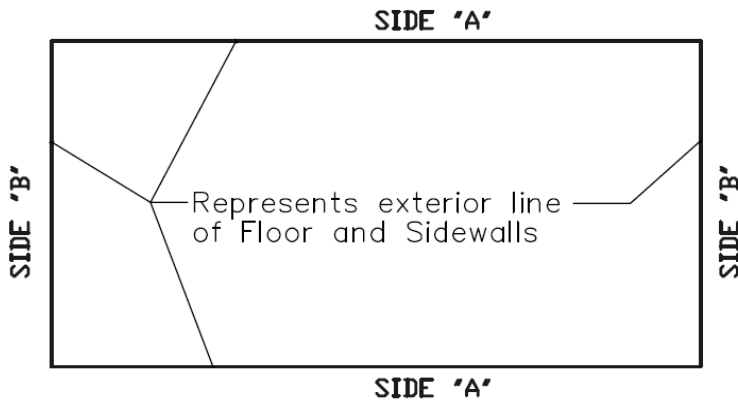


WALK-IN LAYOUT

From page # 5 the exterior layout lines for the Walk-in have been established. Now use the following information for a Walk-In provided with a floor.

FLOOR LAYOUT AS FOLLOWS:

Use the existing exterior layout lines for the Walk-In floor. Hold the exterior metal side of the floor panels flush with the layout lines and fasten the floor panels together. See Approved Assembly drawing for panel number sequence.



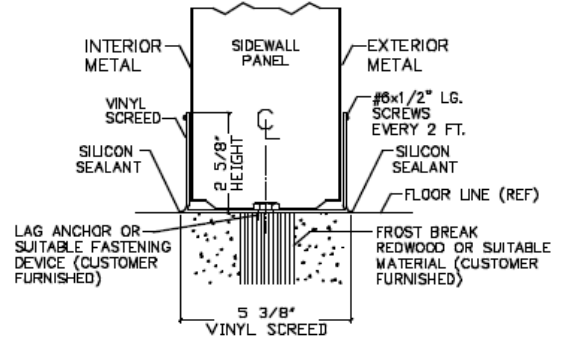
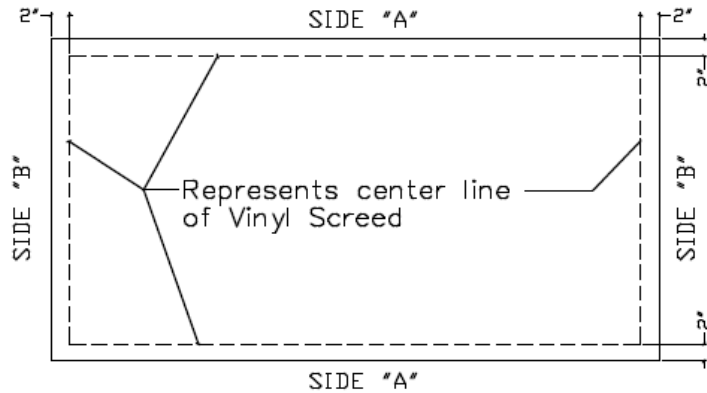


WALK-IN LAYOUT

From page # 5 the exterior layout lines for the Walk-in have been established. Now use the following information for Vinyl Screed, Foamed Screed or Flat Bottom (Floorless options). (The previous page #6 will show "NSF" (National Sanitation Foundation) approved installation requirements).

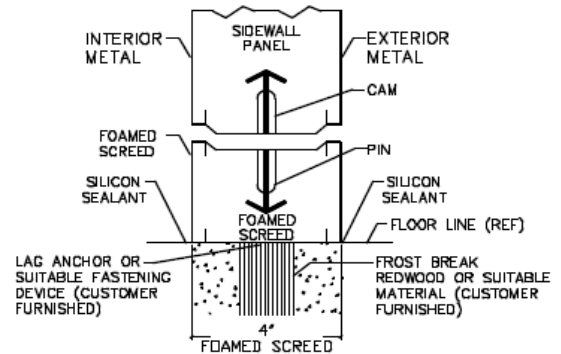
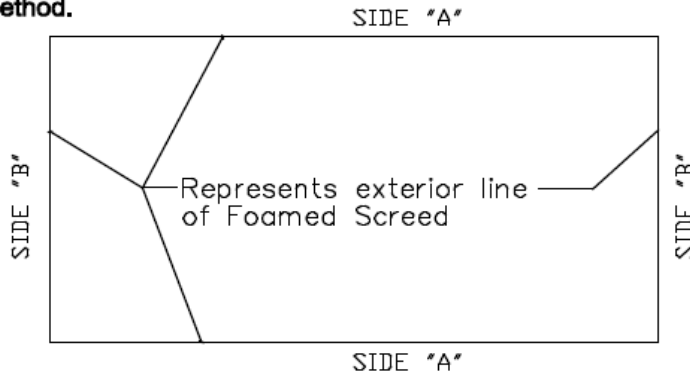
VINYL SCREED LAYOUT AS FOLLOWS:

Offset a chalk line (2") two inches in from each of the exterior lines already established. This will represent the center line of the Vinyl Screed. Caulking the exterior bottom of the Vinyl Screed and fastening to the floor with a Ram Set gun or other fastening device is required.



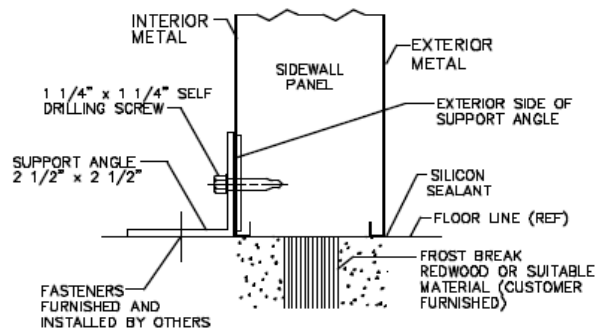
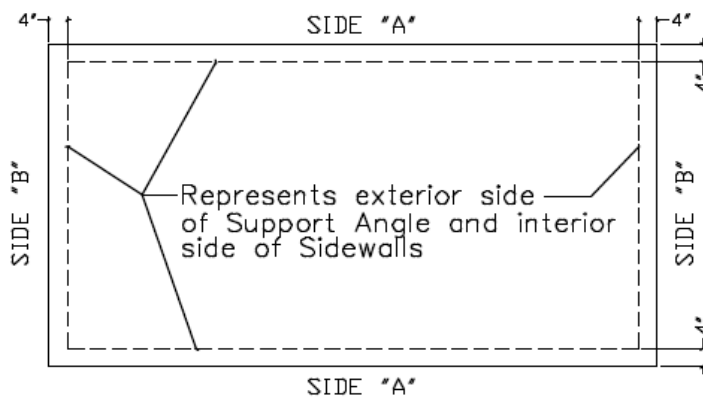
FOAMED SCREED LAYOUT AS FOLLOWS:

Use the existing exterior chalk lines for the Foamed Screed. Hold the exterior metal side of the Foamed Screed flush with the layout lines and fasten to the floor with a Ram Set gun or other fastening device or method.



FLAT BOTTOM SIDEWALLS AS FOLLOWS:

Offset a chalk line (4") four inches in from each of the exterior lines already established. This will represent the exterior side of the Support Angle and interior side of the Walk-in. Fasten the Support Angle to the floor with fasteners (provided by others). Fasten the sidewalls to the Support Angle with 1 1/4 inch screws.

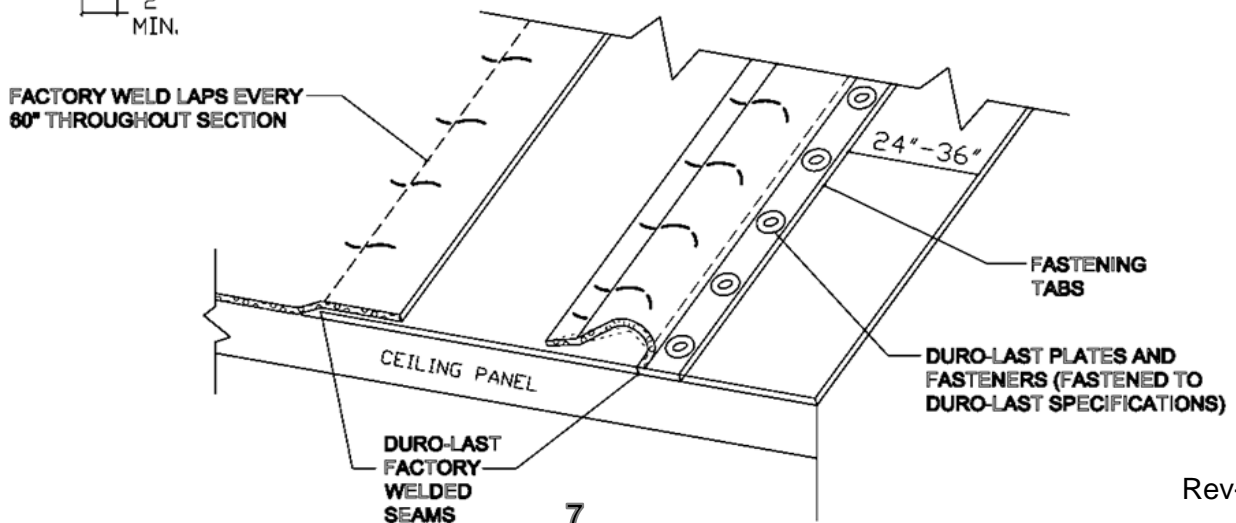
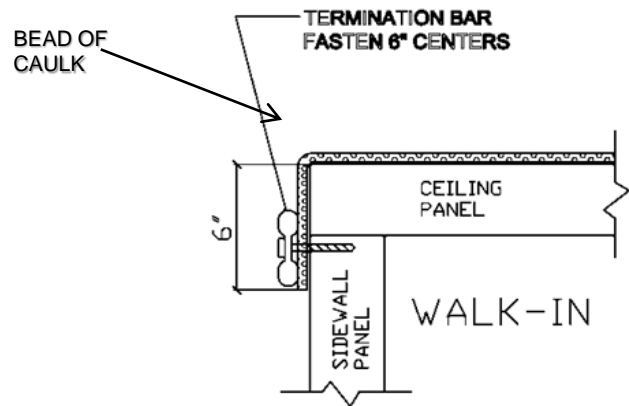
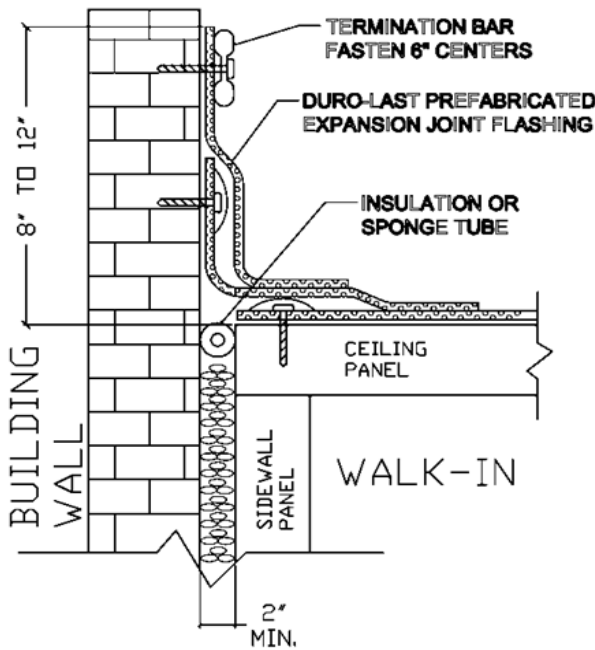


OUTDOOR MEMBRANE ROOF CAP

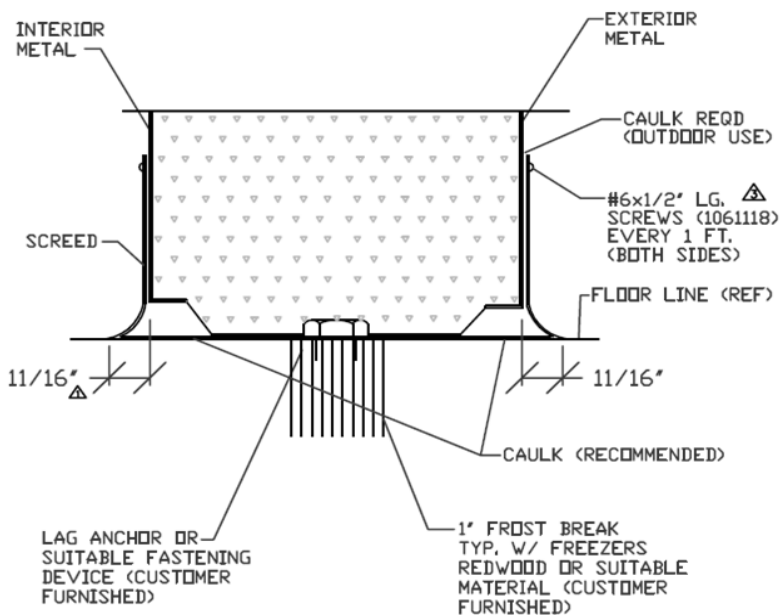
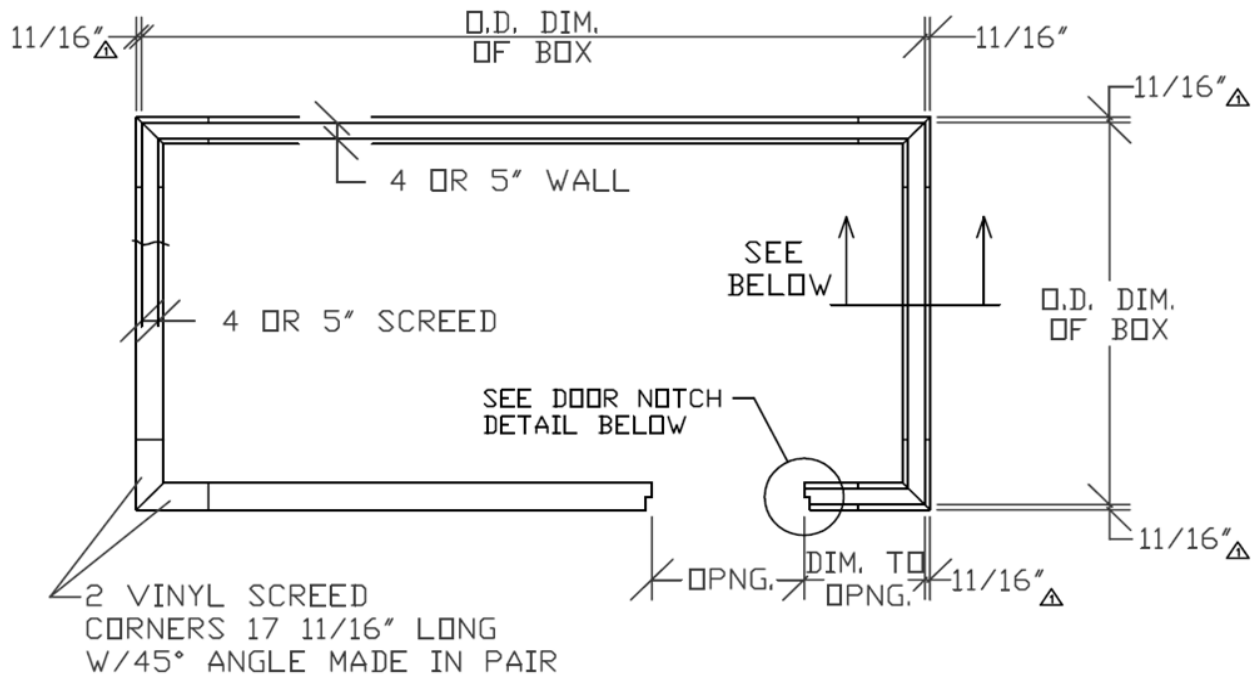
The following steps should be taken to properly install the Duro-Last Membrane Roof Cap.

1. Verify the overall length and width of the Membrane Roof Cap. The membrane should be large enough to turn down 6" on all 4 sides of the Walk-in. If installed up against a building, the turn down should be 6" on 3 sides and 8" to 12" up on the building wall side.
2. Remove any and all foreign material from the top of the Walk-in and seal any rough edges (screw heads, rivets, etc.) with silicone sealant.
3. The smooth surface of the white membrane is the exposed (up) side. The 3" fastening tabs are on the bottom side.
4. Align the membrane so that the tabs are parallel to the adjacent building wall with 8" to 12" of membrane up onto the building and 6" down on each side. If there is no adjacent building, 6" should be turned down on all 4 sides.
5. Start at the base of the adjacent wall (or end of Walk-in) by fastening a plate into the top of the Walk-in roof. Unroll membrane to the next fastening tab and repeat the screw and plate fastening procedure.
6. On completion of all fastening to the top of the Walk-in, fold down the sides and corners and fasten with the termination bar on 6" centers. Seal all exposed edges with silicone sealant. (see sketches below)...
7. **IMPORTANT:** Any other penetrations made in the Membrane roof shall cause leaks and will Void the Warranty.

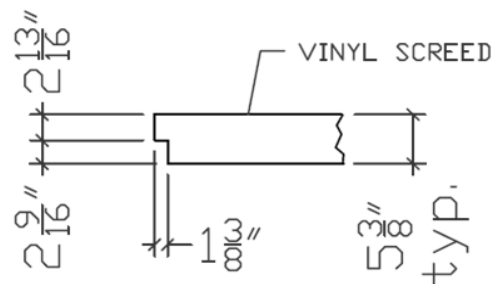
*Installer should refer to Manufacturers Installation Manual for more specific instructions and warranty information.



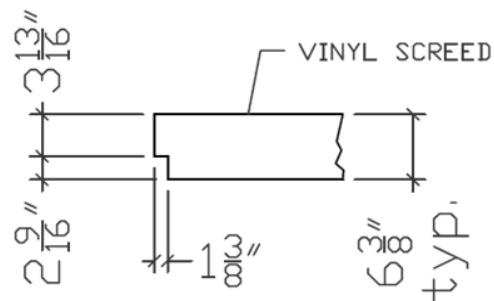
FLOOR SCREED



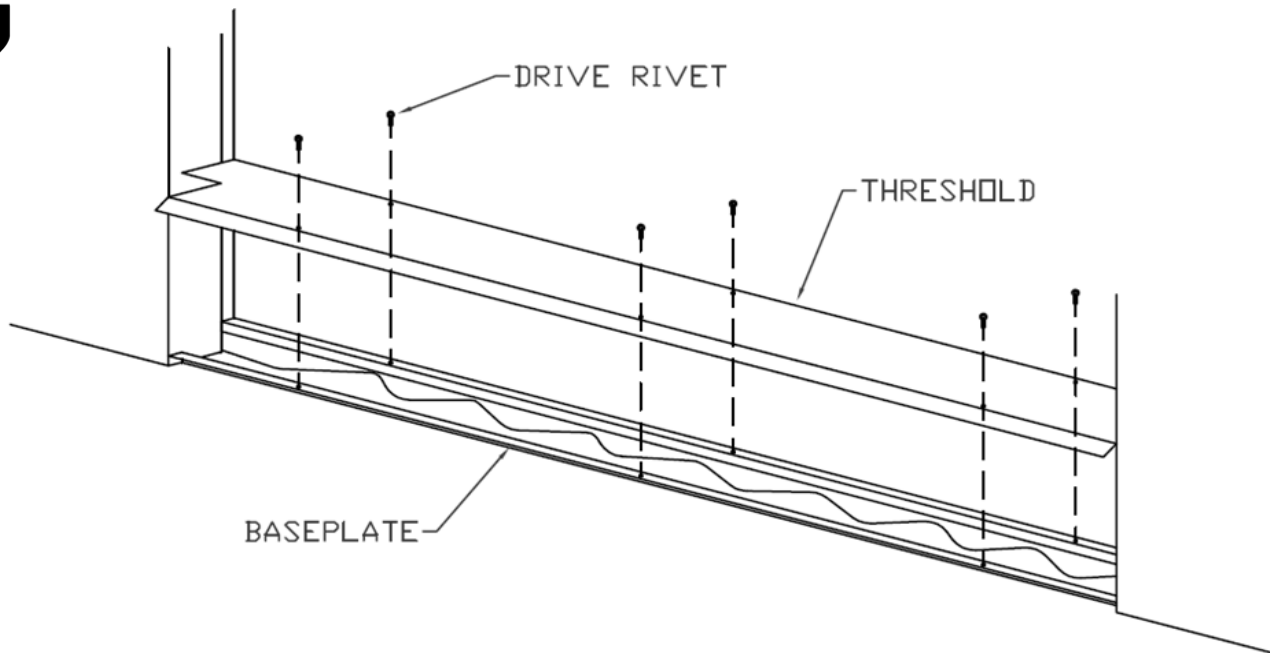
4" DOOR OPNG. NOTCH DETAIL (RIGHT SIDE SHOWN) Δ



5" DOOR OPNG. NOTCH DETAIL (RIGHT SIDE SHOWN) Δ



THRESHOLD



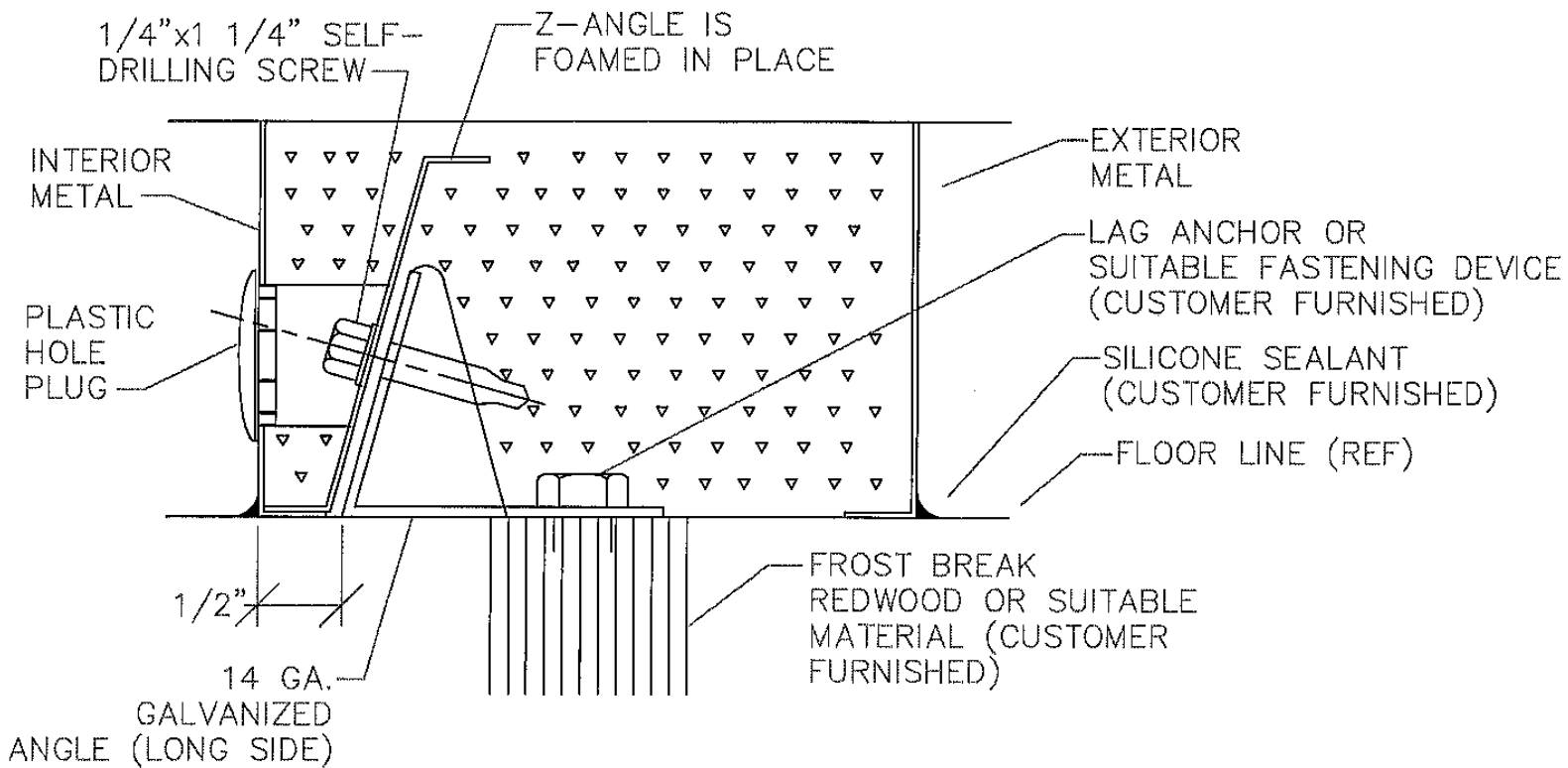
THRESHOLD INSTALLATION OVER BASEPLATE:

1. Install Walk-In per installation instructions
2. Slide baseplate tight to floor surface. Baseplate to be anchored to floor.
3. Place threshold over baseplate, threshold has been pre-drilled at factory.
4. Drill a 3/16" hole through the pre-drilled holes and into the floor panel, or baseplate – whichever applies with your application.
5. Place drive rivet in holes on the threshold and tap in place with a hammer. After threshold is installed, wiper gasket adjustment may be needed for proper closing and sealing.
6. Threshold to be caulked where threshold meets the vinyl of the door frame.



FLOORLESS Z-ANGLE

The 14ga galv angle gets bolted to the concrete. The panel goes down over it and has the actual Z-Angle foamed in place that sits over the angled piece.

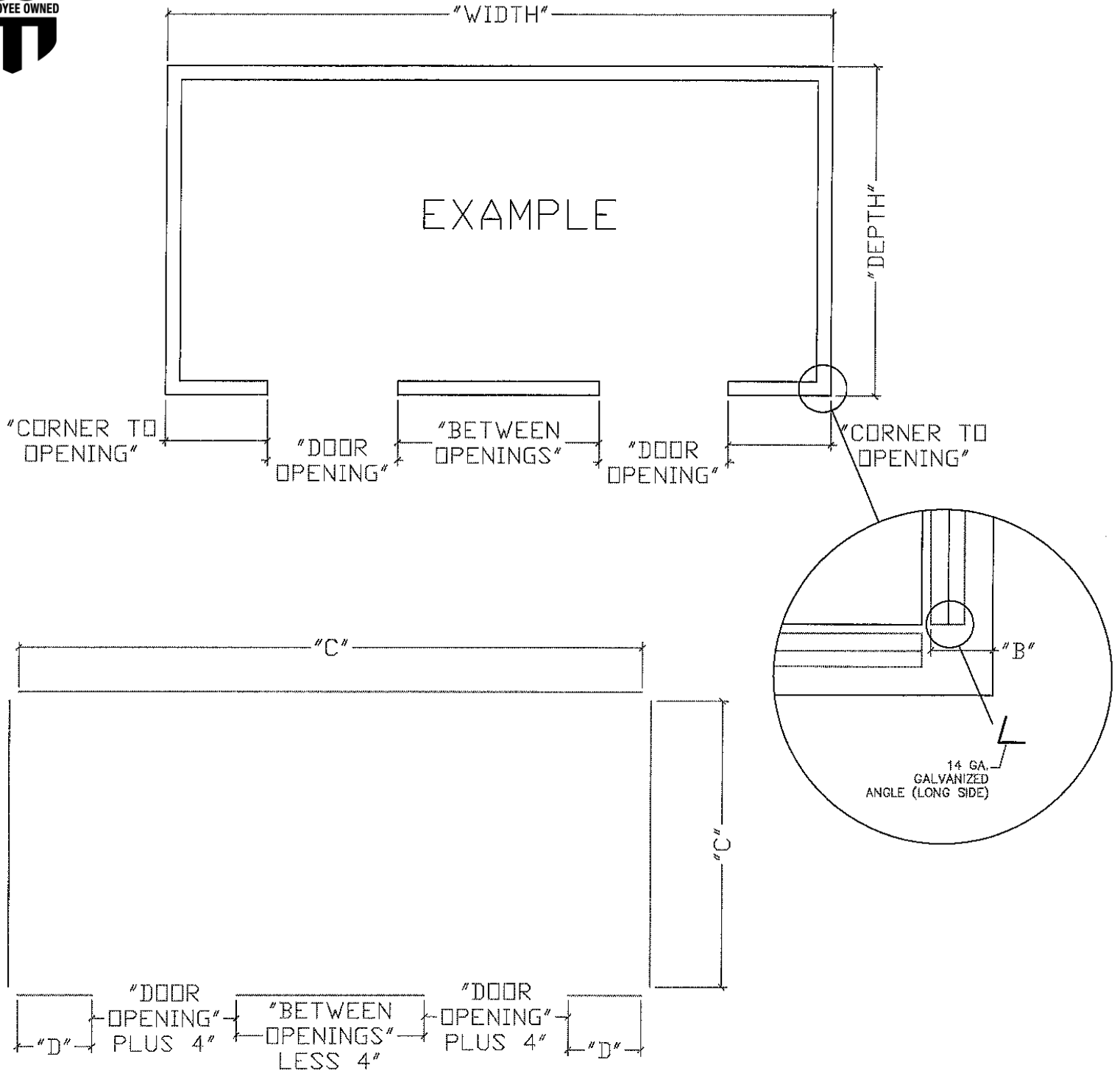


NOTE:

WALK-INS THAT ARE DEPRESSED MUST HAVE ALLOWANCE FOR HOLE ACCESS IN SLAB WHICH CAN BE GROUTED IN AFTER INSTALLATION.



FLOORLESS Z-ANGLE



B= WALL THICKNESS LESS 1/2"
 C= LENGTH ANGLE IS SHORTER THAN ("WIDTH" OR "DEPTH")
 D= LENGTH ANGLE IS SHORTER THAN "CORNER TO OPENING"

WALL THICKNESS	B	C	D
3	2 1/2"	6	5
4	3 1/2"	8	6
5	4 1/2"	10	7

LEER RECOMMENDS INSTALLING SKID STRIPS



Apply 1 strip every linear foot the length of the box

Surface Preparation Instructions:

1. Make sure surface is clean, dry, smooth and above minimum application temperature when applying Jessup® Safety Track® Non-Slip material. Repair or replace any broken or damaged surface. Minimum application temperature: 50°F (10°C)
2. Remove chipped, cracked or peeled paint prior to applying Safety Track® material.
3. Remove loose residue from surface.
4. Floor finish should be removed from floor prior to application.
5. Referring to the Surface Preparation Table use cleaner or solvent wipe to clean surface. After cleaning, allow to dry thoroughly.

Priming Instructions:

1. Prime clean, dry surfaces with a primer especially:
 - a. Uncoated concrete surfaces.
 - b. Coated, painted or porous concrete if surface is excessively rough.
 - c. Other porous surfaces.
2. Surface Priming:
 - a. Properly clean the surface following the Surface Preparation recommendation.
 - b. Use a brush to apply a thin coat of primer where treads are to be placed.
 - c. Allow the primed area to dry thoroughly (no evidence of stickiness or tackiness) before applying Safety Track® material.

Application Instructions:

Tools Needed:

Rubber Hand Roller or
Rubber Mallet

1. Individual pieces should be spaced a minimum of 1/2" apart and a maximum of 2" apart. 1/2" from stair edges.
2. Round the corners of any pieces cut from rolls.
3. Peel protective liner back about 2" from one end and position piece on surface. IMPORTANT: Minimize touching adhesive with fingers.
4. Continue to remove liner. Press firmly in place as liner is removed.
5. For small pieces: Peel liner off piece. Holding piece by its edges, curve it gently with the adhesive side out. Align with the middle of the target surface and press down.
6. Finally, press into firm contact with surface using a rubber hand roller by starting in middle and rolling out towards edges.

Maintenance Instructions:

- To maintain product effectiveness, the application should be inspected periodically.
- Keep free of dirt and other residue that might impair functionality.
- Safety Track® grit tapes and treads should be brushed or broomed regularly.
- Resilient tapes and treads should be mopped regularly.
- Use appropriate cleaner such as a general maintenance liquid to keep material and surrounding surfaces dirt and grease free.

To remove and replace worn or torn material:

- Start by pulling up old material. Use of a heat gun may assist in this process.
- After removal of old material, use a citrus based industrial cleaner to soften adhesive residue and allow scraping of surface in preparation for product replacement.

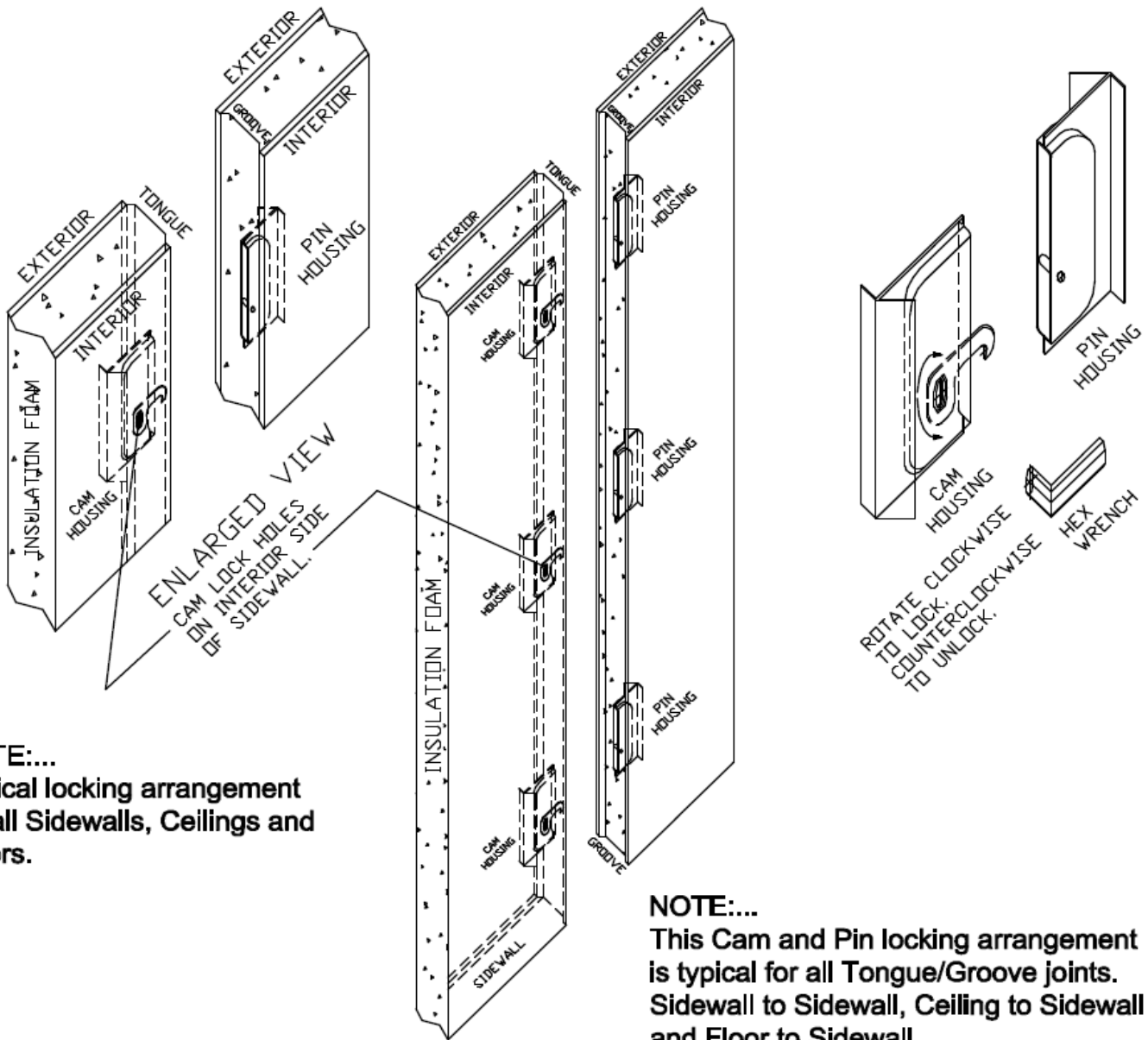
Important for Proper Application and Service Life:

1. All surfaces must be clean, dry and at recommended temperature before applying product.
2. Rough or porous surfaces must be primed for proper adhesion.
3. Rubber Hand Roller should be used to assure a firm bond when applying all Safety Track® materials.
4. For extra protection from excessive moisture or liquids, use an edge sealing compound.
5. Safety Track® material can be applied on most painted surfaces that are in good condition. Safety Track® material will adhere as well as the base paint. Painted surfaces must be thoroughly dry before application of Safety Track® Non-Slip material.
6. Treated or untreated wood must be painted prior to application of Safety Track® Non-Slip material.
7. Do not apply Safety Track® material over grouting. Also, avoid cracks in concrete and breaks in all surfaces.
8. Store product in its original carton at 72°F and 50% humidity.
9. It is recommended to use the product within 1 year from the date product is received.

PANEL INFORMATION AND CAM LOCK FASTENERS

Except for very special construction, the Cam Lock access holes are located on the inside (interior) of all panels. When viewed from the Interior, the sidewall panels will have the tongue (male) side on the right edge and the groove (female) side on the left edge. Special panels may have double tongue and or double groove edges. These and all panels will be identified on the Assembly Drawing shipped with the Walk-In. Special construction may require the Cam Lock holes be put on the outside (exterior) of the panels. This will also be noted on the Assembly Drawing.

The Cam Lock fasteners lock the panels together tightly and securely. The Cam Lock wrench (provided) should be inserted into the lock before the panels are pushed together and turned counterclockwise as far as it will go. This will cock the cam fully and assure correct latching when turned clockwise to lock. The panels should then be pushed tightly together before locking. **If for any reason the cam is backed off after it has been turned clockwise, it should be turned as far as it will go counterclockwise and then clockwise to relock.** NOTE: Occasionally a special double tongue panel will be used because of construction requirements. These Cam Locks are reversed and should be turned counterclockwise to lock. Plug buttons (provided) should be inserted into the Cam Lock holes after all locking is complete.



NOTE:...
 Typical locking arrangement for all Sidewalls, Ceilings and Floors.

NOTE:...
 This Cam and Pin locking arrangement is typical for all Tongue/Groove joints. Sidewall to Sidewall, Ceiling to Sidewall and Floor to Sidewall.



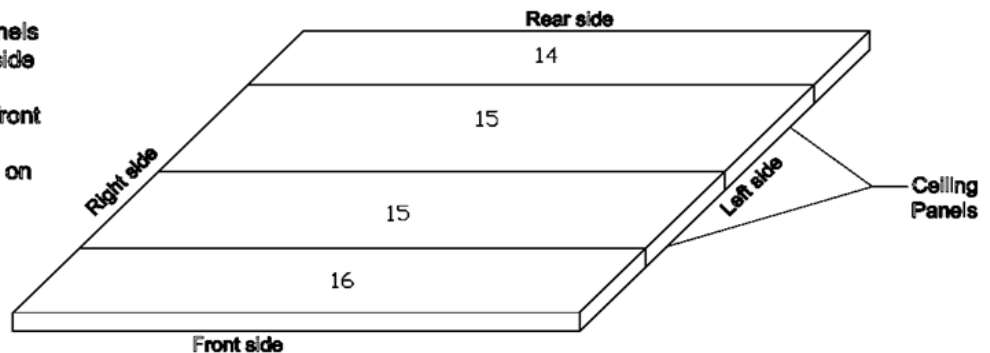
ASSEMBLY DRAWING

Please retain a copy of the final Assembly Drawing with this installation manual for future reference.

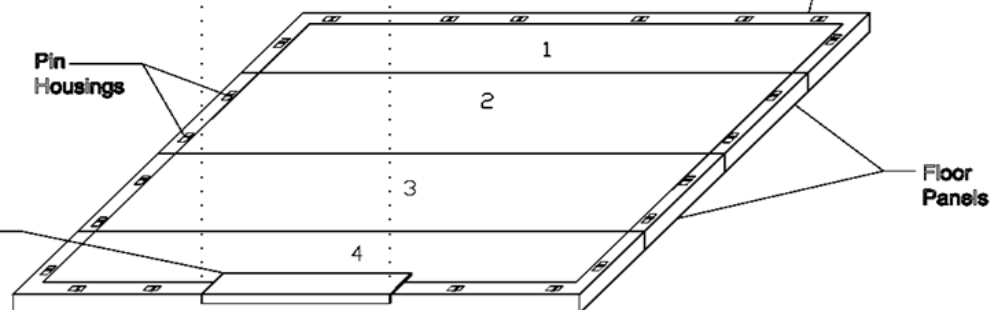
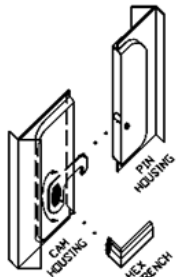
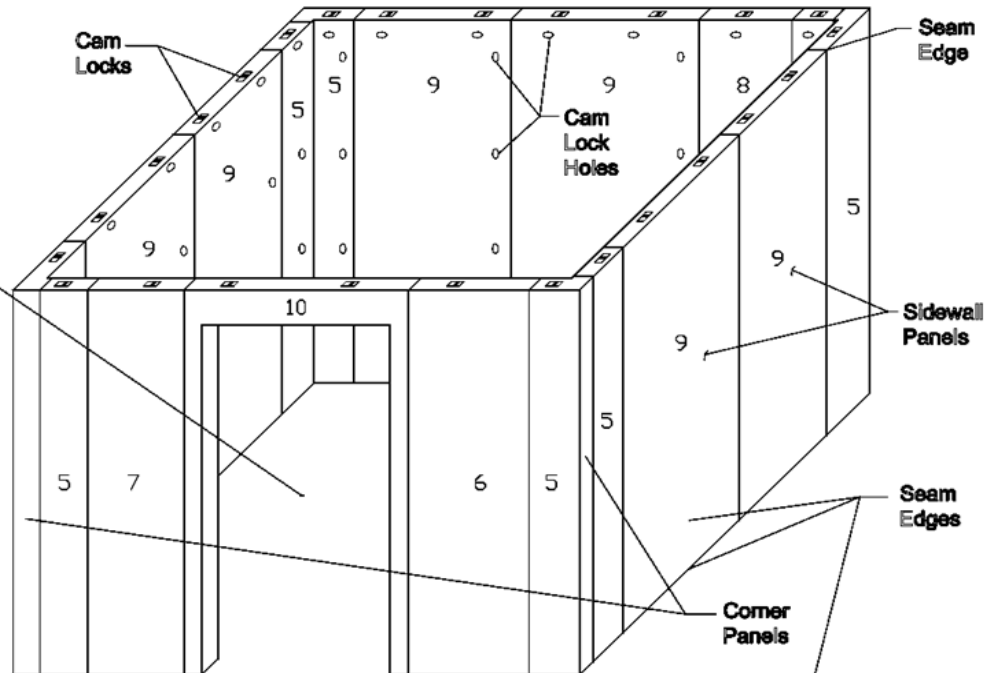
The drawing below is an Isometric view of a Walk-in. A final Assembly Drawing is shipped with the order. That drawing will reflect the actual panel layout and configuration of the order. All panels are marked with a number located on the base end of each panel.

Due to site restrictions, it is normally not possible to start assembly with panel #1 and continue with the exact sequence of the panel numbers on the Walk-in. The basic rule for panel assembly is to start with the corner panel that is most inaccessible. As long as the panels are assembled as numbered and shown on the Assembly Drawing, it makes no difference which corner assembly is started.

NOTE: The Ceiling and Floor panels are shown running from the left side of the box to the right side. They could be running from the front to the rear depending on the application. This will be reflected on the final Assembly Drawing.



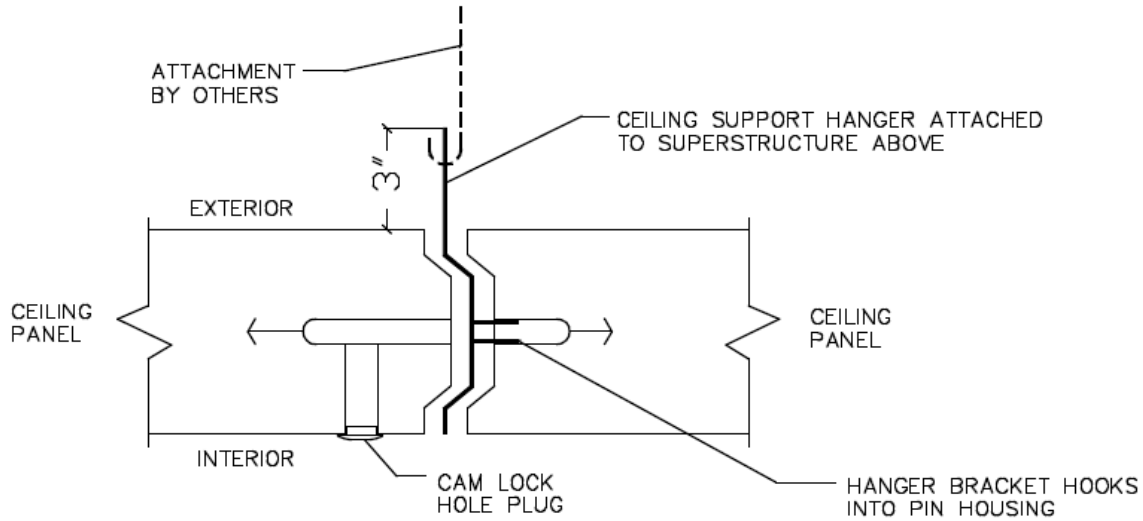
IMPORTANT: Keep door closed and locked until all the Walk-in walls are assembled and the door is in place. Try to avoid opening the door until it is assembled in the Walk-in.



IMPORTANT: The threshold cap must be pop-riveted to the support channel and fully caulked around all edges to avoid air leakage.

CEILING SUPPORTS

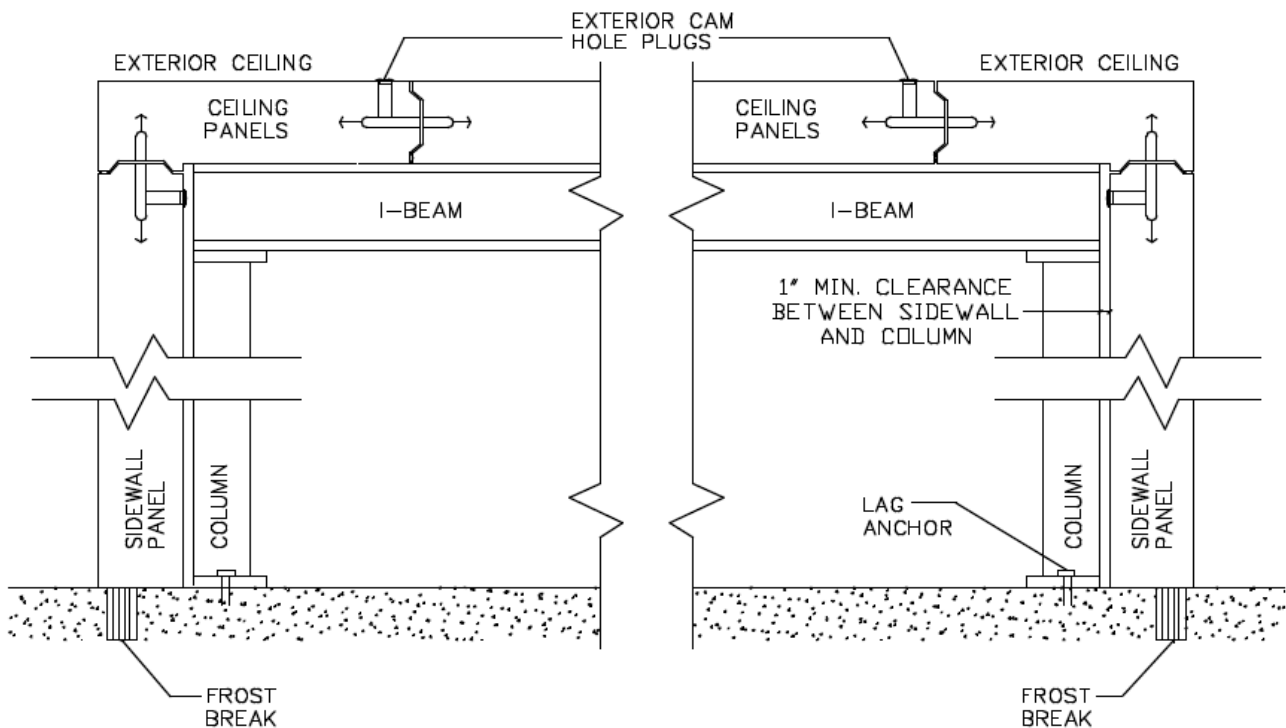
When a Walk-In is installed indoors, the maximum ceiling span without support is 14'-5 1/2". Two (2) methods are used to support ceiling panels over this span. Use the method selected and shown for correct assembly. Method #1 shows how the Ceiling Hanger Bracket is installed between split ceiling panels. Suspend the ceiling from a superstructure of the building (as shown below).



***Leer recommends no less than 1/4" rod tinsel strength.**

STRUCTURAL SUPPORTS

Method #2 shows I-beams and Columns on the interior side of the Walk-in. Note the clearance requirements for the I-beams and Columns. This will be unusable storage space in the Walk-In.



REFRIGERATION SYSTEM

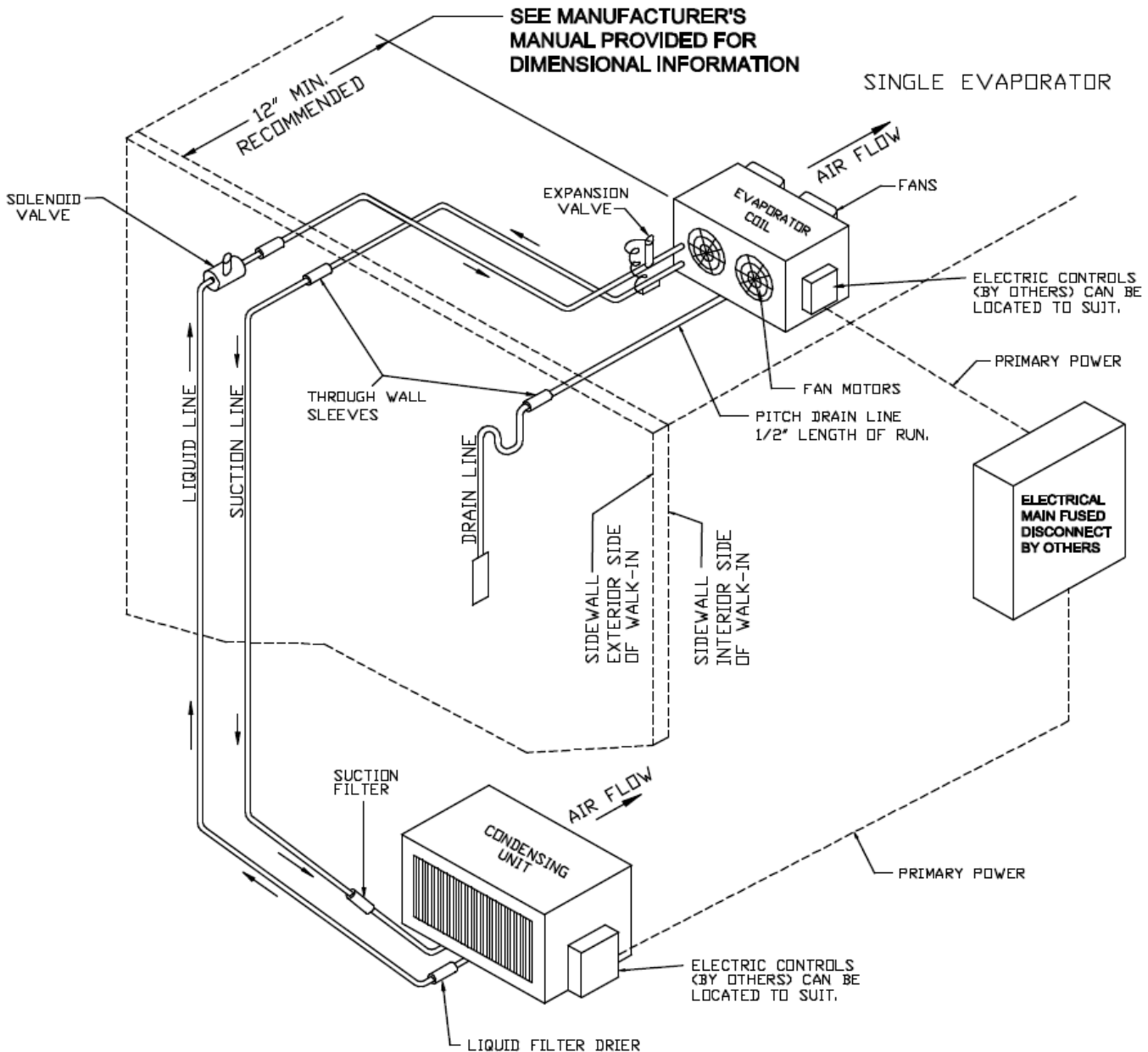


The drawing below is a typical isometric pipe and flow diagram of a single Evaporator Coil and Condensing unit and it shown for reference only. The actual refrigeration system diagram depends on the application and installation of the Walk-In.

The installation of this equipment should be done by a qualified licensed refrigeration company and any electrical work should be performed by a qualified licensed electrician. Failure to utilize qualified licensed individuals may result in termination of warranty.

The Condensing unit is installed outside the Walk-In and the Evaporator Coil is installed inside the Walk-In. The Coil is normally hung from one of the ceiling panels on the opposite end from the door. Unless otherwise specified, all piping and electrical components are provided by others.

Installer should refer to refrigeration Manufacturers Installation Manual for all electrical and refrigeration line hookups, as well as all startup information.



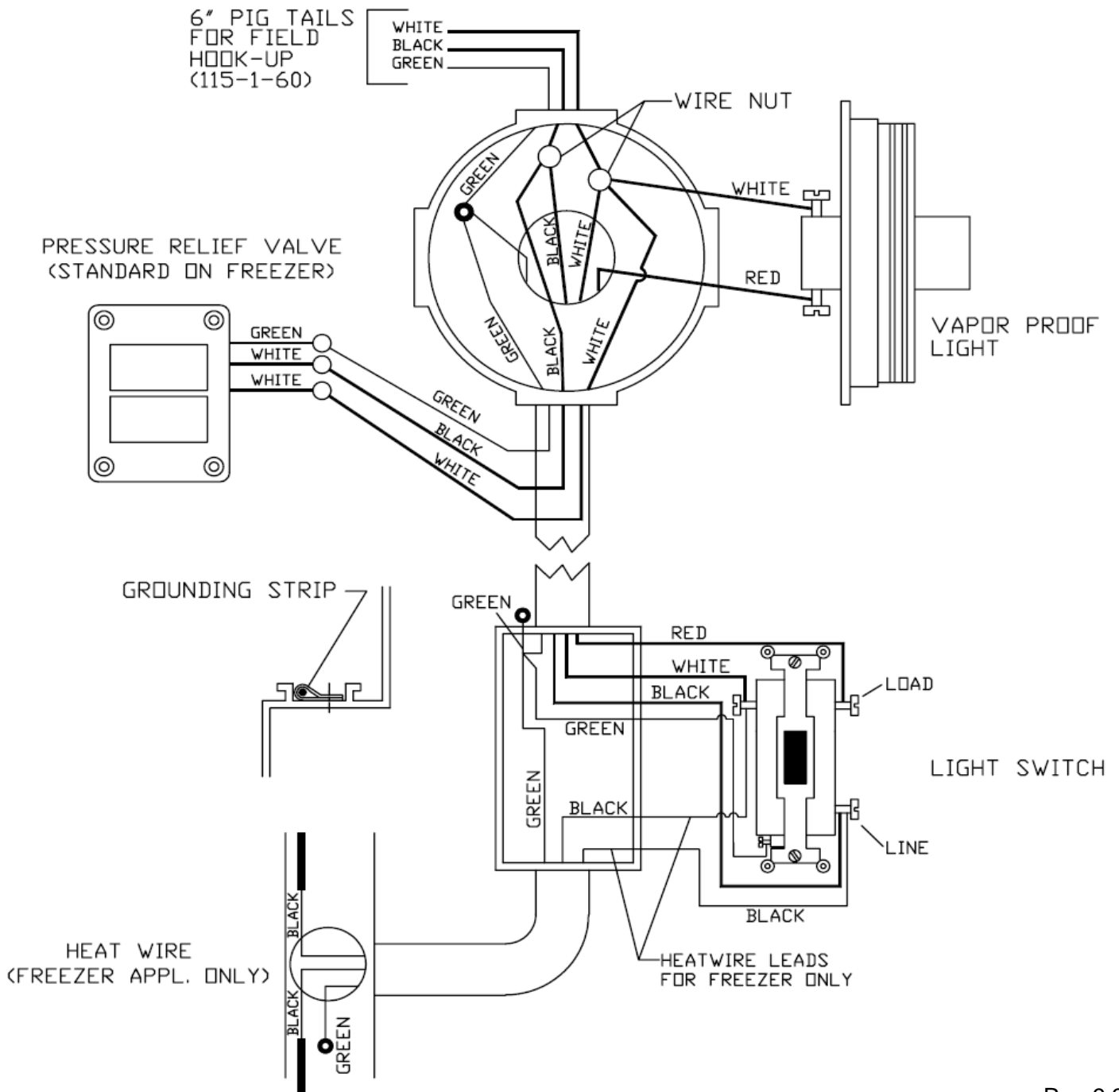


ELECTRICAL SCHEMATIC

The drawing below is an Electrical Schematic for a Walk-in Cooler or Freezer. It includes the wiring for the Vapor Proof Light, Pressure Relief Valve and Heat Wire. Schematics for the refrigeration are provided in the manual supplied by the Refrigeration Manufacturer. Any electrical work should be performed by a qualified licensed electrician. Other components with the Walk-In not shown on this schematic will be shown on specific schematics and ship with the Walk-In.

IMPORTANT: Do not start electrical power to the door section until after the refrigeration system is installed and in operation. This would void the warranty. The heat wire on Freezer units could cause damage to the door section unless the Walk-In is at operating temperature.

***Note:** All penetrations must be caulked, including existing conduit in electrical boxes and light fixtures





GENERAL MAINTENANCE

1. The interior and exterior surfaces of the Walk-In panels should be cleaned to remove finger prints, dirt or greasy residues. Panels should always be above freezing temperature for effective cleaning and rinsing.
2. Clean wall and floor surfaces with a soft cloth or sponge and mild soap and warm water. **Important:** Follow all product cleaner instructions. Rinse thoroughly. **Do not use caustic or abrasive cleaners.**
3. Stainless steel finishes should be cleaned and wiped in the direction of the metal grain.
4. **Do not** clean walk-in surfaces with high pressure washers as they may damage metal and foam bond.
5. **Do not** clean walk-in panels with acidic cleaners (i.e. vinegar). Acidic cleaners attack metal surface and can permanently damage metal coating.
6. Inspect door gaskets for complete seal regularly. Clean the door gaskets with mild soap and warm water and dry thoroughly with a soft clean cloth.
7. Check the heater wire around the freezer door opening regularly. If there is frost or sweating, contact an electrician to verify the heater wire is operating properly.
8. Check and lubricate door hinges with petroleum jelly every two months.
9. Check and tighten all screws in the hinges, latch, door closure and any other mechanism provided with door as needed.
10. The top of the walk-in is not a storage area. Damage caused by the storage of anything on the top of the walk-in is not covered by warranty.

DIAL THERMOMETER CALIBRATION

1. The thermometer(s) calibration should be checked after installation because of possible rough handling during shipment.
2. To check the thermometer, fill a 32 ounce cup with ice and cold water. Place the thermometer probe in the cup for approximately one minute and read the temperature. The temperature should read 32°F. ± 2°F. (0°C. ±1.1°C.). If thermometer is not reading 32° remove lens cover to calibrate. To remove lens cover, slide a flat screwdriver into the slots of the cover and pry off gently.
3. If thermometer reading is **HIGHER** than 32°, place index finger at left side of the wide end of pointer, close to the hub. Insert small screwdriver in pointer slot and turn slowly clockwise until pointer points to 32°. If thermometer reading is **LOWER** than 32°, place index finger at right side of the wide end of the pointer, insert screwdriver in pointer slot and turn counterclockwise until the pointer points to 32°. Replace cover by gently prying into place.
4. If the needle has fallen off during shipment, remove lens assembly, put needle on stem with pointer down (6 o'clock). Gently press needle on stem. Test calibration using the above procedure.



DIAL THERMOMETER CALIBRATION

NOTE: Thermometers are factory tested for accuracy. However, they may become inaccurate during shipment. The following calibration procedure is required to reset the thermometer accuracy.

TO TEST: Fill a 24 or 32 oz. cup with ice and fill with water. Submerge probe in ice water for 30 seconds. Thermometers should read 32 degrees with a high and low tolerance of two degrees. Calibration is not required if test results are within this range.

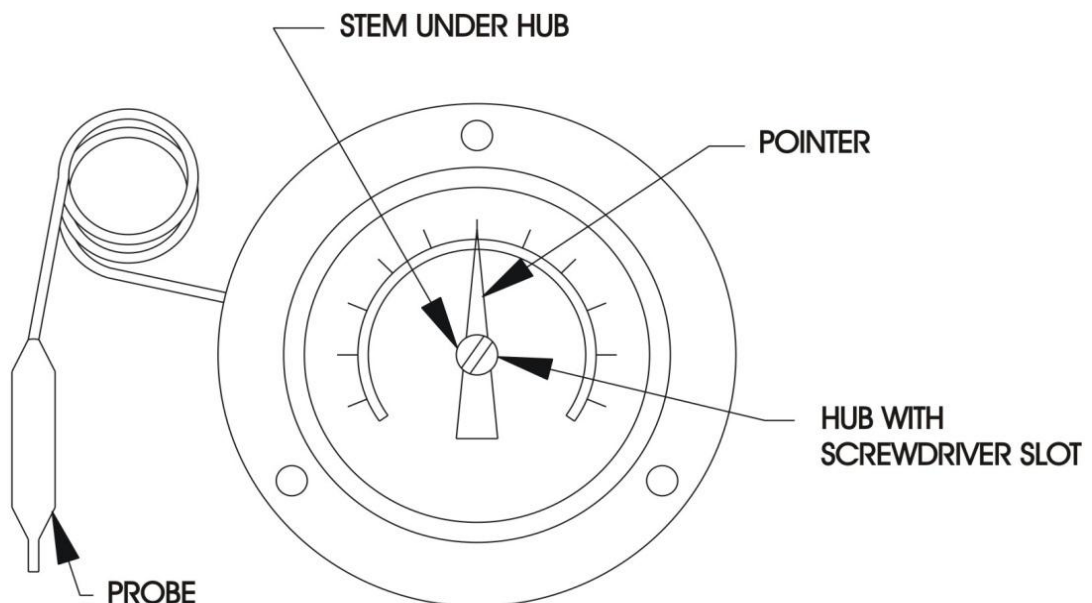
TO RECALIBRATE

Remove lens cover with a flat head screwdriver. Slots are provided to pry cover off. The following adjustments should be made sensitive to condition of the thermometer. When adjustments are complete, replace the lens cover by pressing it back into place.

FOR LOWER TEMPERATURE: Place index finger at left side of wide end of pointer, close to the hub. Insert screwdriver in pointer slot and turn slowly clockwise. Adjust to proper setting.

FOR HIGHER TEMPERATURE: Place index finger at right side of wide end of pointer, close to the hub. Insert screwdriver in pointer slot and turn slowly counter-clockwise. Adjust to proper setting.

IF POINTER IS OFF STEM: Remove lens cover, place pointer on stem with tip down (6 o'clock position). Gently press pointer onto stem. Test and calibrate per above instructions. Replace lens cover.



DOOR GASKET / WIPER INSTALLATION AND REPLACEMENT

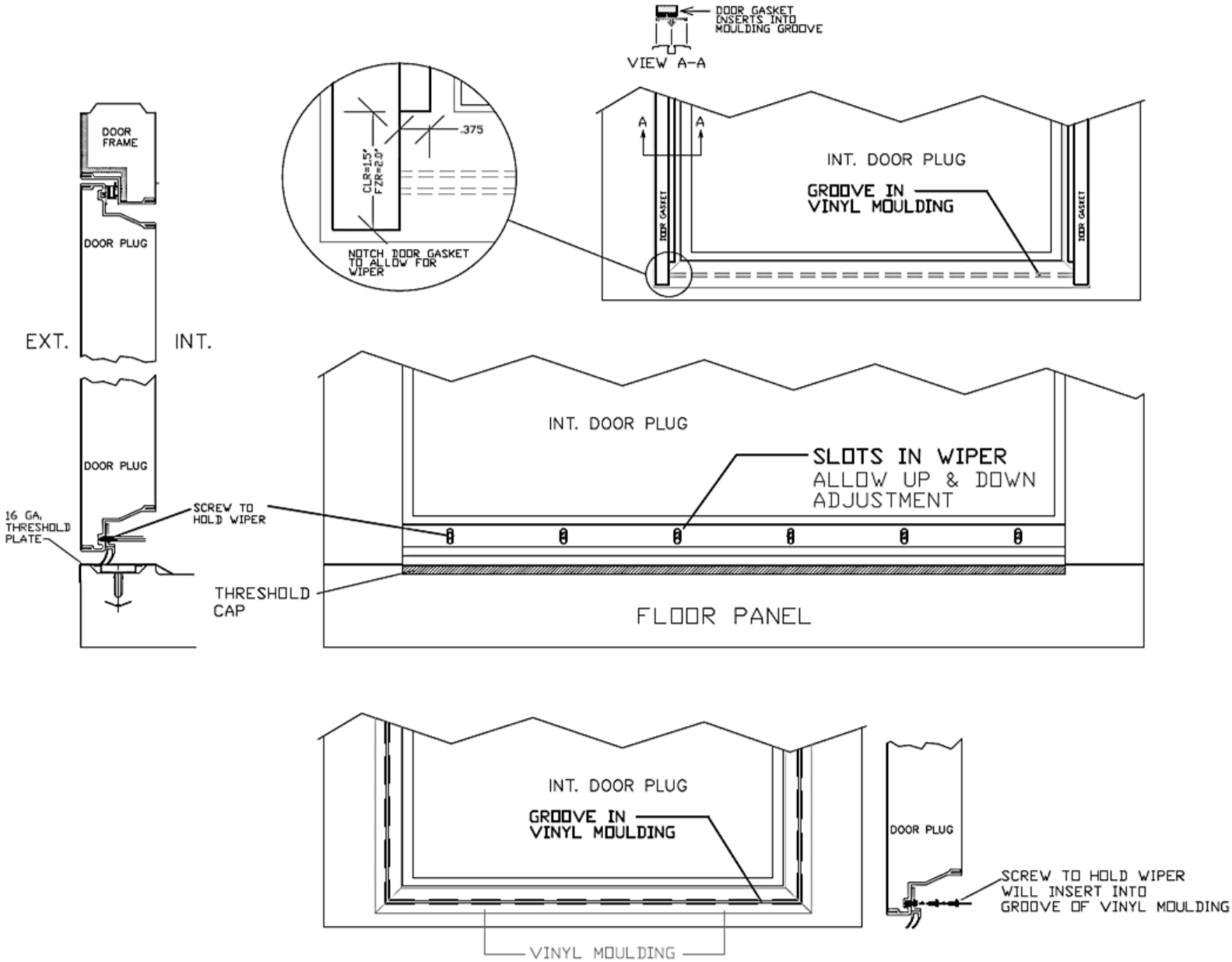


The Door Gasket and the Door Wiper will come pre-assembled on your door. It is expected that the Door Wiper be adjusted after complete installation of the walk-in. The Wiper is to be adjusted to the point where it is touching the floor, however is not rolling up or dragging on the floor. This adjustment is made using a screw driver (not supplied) to loosen the screws holding the wiper in place. You should only have to loosen the screws to adjust the wiper up or down. When the wiper is adjusted correctly the screws are to be tightened. Hand tighten the screws only as excessive tightening may result in stripping the vinyl door material. See Wiper Mounting Detail Drwg on page 21.

When replacing a Door Gasket it is advisable to start at the bottom of the door to remove the existing gasket. The gasket utilizes a dart type locking system to hold the gasket in place on the vinyl frame. You will want to pull the gasket from the bottom to get a clean start. The gasket should pull out fairly easily. Hint – For freezer doors (especially with an ice build up) you will want to warm the area up to melt the ice away before trying to remove the gasket. A low wattage blow dryer can be utilized to aid in this process. Once the gasket has been removed the new gasket can be installed into the groove in the vinyl molding. It is advised that you start at the top of one of the door corners and fit the top of the door first. You then can move down to snapping in each leg of the gasket along the gasket groove in the vinyl molding of the frame. See Door Gasket Detail Drwg on page 21.

Please note that the gasket is more than likely longer than the door opening. It is suggested that the gasket be cut to fit to the bottom of the door wiper. There is a plug in the bottom of the gasket that will allow for the gasket to be cut up to $\frac{3}{4}$ of an inch. If gasket requires being cut anything more than this $\frac{3}{4}$ " it is advisable to remove the plug in the bottom of the gasket, cutting the gasket to length. Then the magnet should be cut approximately 1" shorter than the new length of the gasket leg. Plug can then be inserted back into the bottom of the gasket. Use super glue for attaching to the gasket. (Not supplied by Leer) The dart on the back of the gasket will need to be cut off at the approximate location where the groove ends on the bottom. A notch is also to be cut out of the side of the gasket at the bottom for the Door sweep to fit in between the gasket. Refer back to Detail Drwg on page 21.

DOOR GASKET / WIPER INSTALLATION AND REPLACEMENT

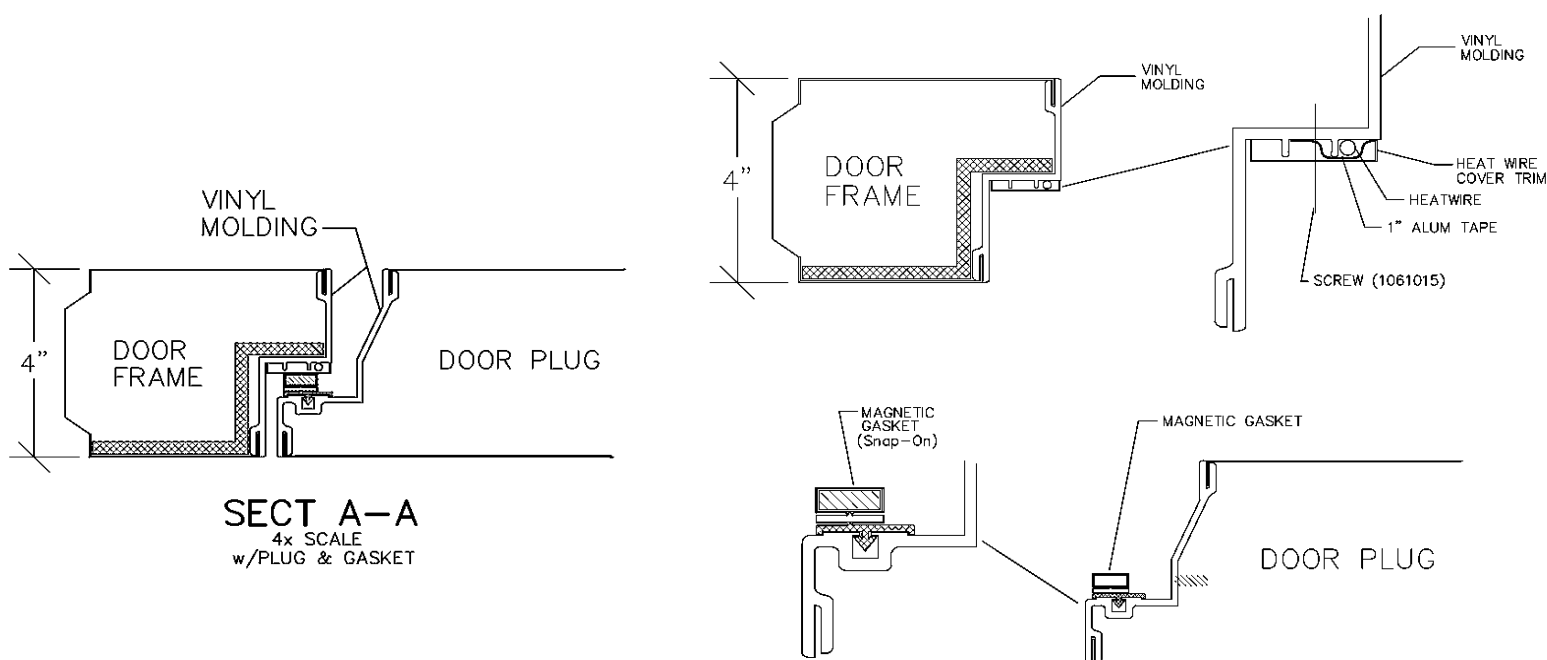




DOOR HEAT WIRE INSTALLATION / REPLACEMENT

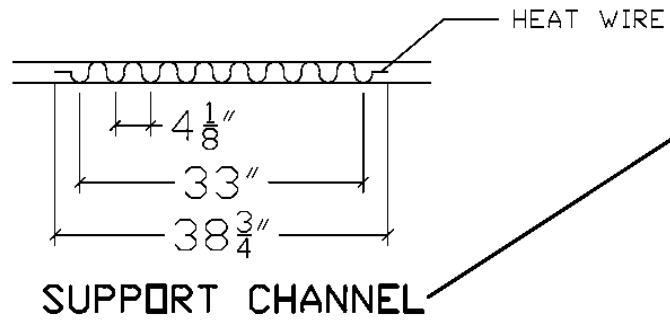
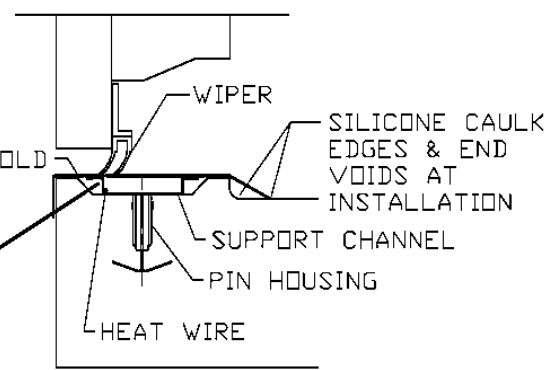
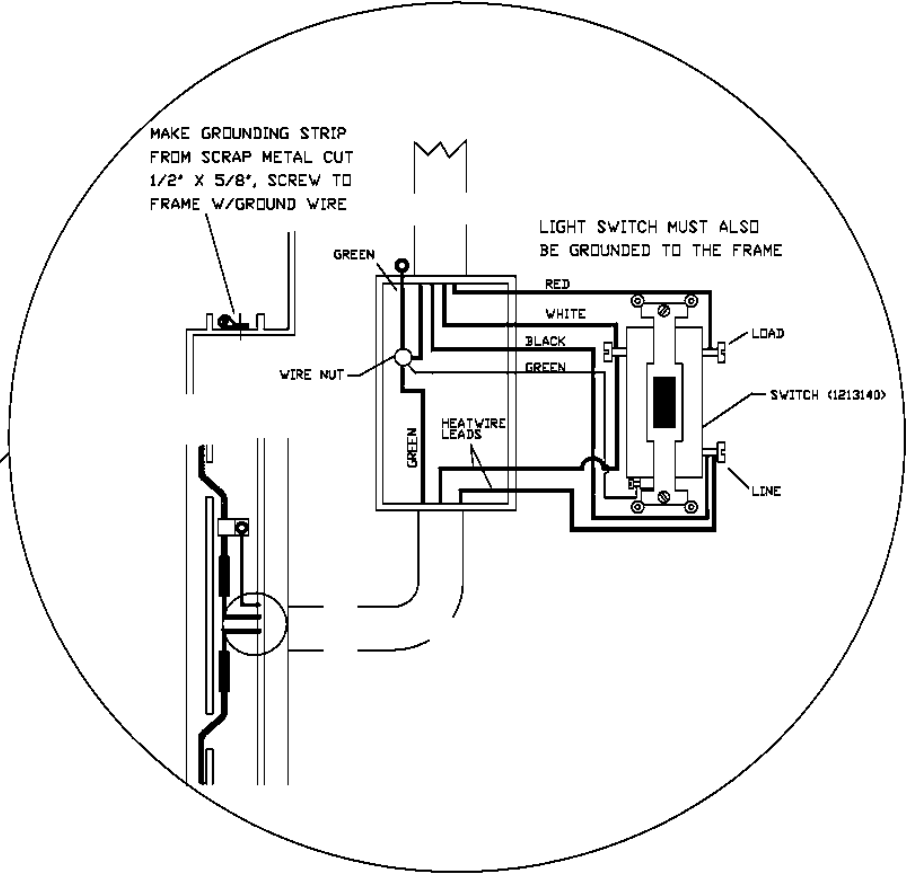
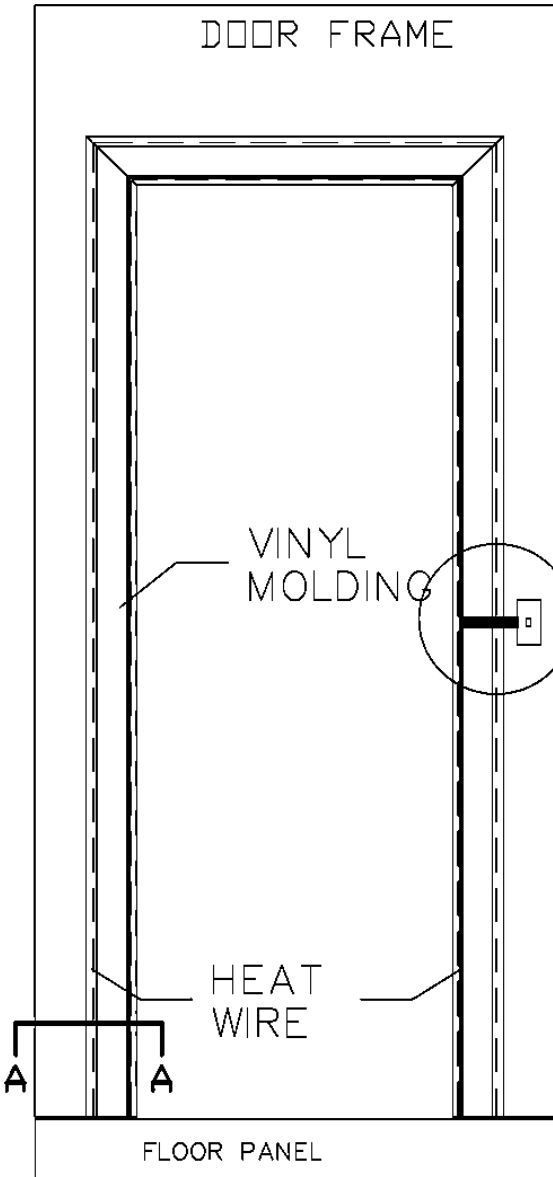
All Leer Freezer Doors will come pre-assembled with a Heat Wire fully Installed. It is the Installers position to verify that all the conduit connections are sealed with caulk before the final connections are made to electrical source. **It is to be noted that if the power to the Door Light Switch is connected before the refrigeration systems are started up and brought to temperature, the Heat Wire is to be disconnected before power is connected to the Walk-In.** Leer standard heat wire in a freezer door is an 8 Ohm, 85 Watt, .75 Amp Heat Wire.

When replacing the Door Frame Heat Wire it is advisable to first cut the power to the door. Remove the Heat Wire Cover Trim and Threshold Cap. The Cover Trim is held on using Phillips Head Screws. The Threshold Cap uses Drive Rivets that will need to be drilled out. Once all the trim has been removed, locate the Heat Wire Leads in the Switch Box and disconnect. Attach a wire or a string to the wires before removing. This will allow for you to feed the new heat wire leads back thru the conduit to the light switch box. Remove the heat wire from the channel paying close attention to how the wire is situated in the channel as well as the threshold area. You will want to try and duplicate this layout. Cut 1" wide strips of aluminum tape (Not Supplied) into 3" lengths and secure heat wire to inside lip of opening approximately every 12" around door frame. Zigzag any extra heat wire material across the threshold base. Mount heat wire cover trim w/screws being careful not to hit heat wire. Reattach Threshold Cap.



SECT. A-A BREAKDOWN

DOOR HEAT WIRE INSTALLATION / REPLACEMENT



RECOMMEND THAT SUPPORT CHANNEL BE FASTENED TO PIN HOUSING WITH 3" SCREWS SUPPLIED

FREEZER DOOR SILL

WARRANTY – WALK IN COOLERS AND FREEZERS



SERIAL / ORDER # (_____)

One (1) Year Parts Thirty (30) Days Labor Warranty

Leer Inc. warrants to the original purchaser of a walk-in cooler or freezer to be free from defects in material and factory workmanship under normal use and service for a period of one (1) year (not to exceed one (1) year and three (3) months from original shipment date). Leer will repair or replace, less freight charges, refrigeration, mechanical and electrical components of any Leer walk-in cooler or freezer that becomes defective. Any defective parts to be repaired or replaced must be returned to the destination designated by Leer, transportation charges prepaid, and they must be properly packaged and identified with a return material tag. This return material tag must be obtained from Leer. The serial and model number of the part and the date of original installation of the Leer walk-in must be given. After thorough examination of the defective parts, the decision of the Leer sales department shall be final. Leer will not assume any responsibility for any expenses (including labor) incurred in the field incidental to the repair of and replacement of equipment covered by this warranty.

(Optional) Additional Four (4) year Compressor Warranty & Service Agreement

At an additional charge, Leer warrants to the original purchaser the refrigeration compressor for a period of four (4) years beginning after one (1) year from original shipment. The four-year warranty, when purchased covers the replacement of the compressor only. The refrigerant and labor is expressly not included in this warranty. The Service Agreement allows the customer (if they choose) to contact a pre-approved refrigeration company selected by Leer for technical advise or repairs to the components. **Contact Leer for proper replacement procedures and list of Pre-Approved Service contractors.**

Ten (10) Year Limited Panel Warranty

Leer Inc. warrants to the original purchaser, the foamed-in-place polyurethane panels manufactured and sold by it, to be free from defects in material and workmanship under normal use and service for a period of ten (10) years from the date of original installation by an authorized representative. This warranty is void if the panels have been moved from the original site and reinstalled.

General Provisions Applicable to all Walk-In Division Warranties

Leer shall not be liable for any breach of any express warranty set forth above unless Leer is informed immediately upon the discovery of defective part(s). The warranties described above are not transferable and shall operate only in favor of the original buyer/user. These warranties shall not apply to any goods, or any part thereof, which may have been subject to any damage in transit, accident, negligence, abuse or misuse, unauthorized alteration or repair, acts of nature or failure to follow any of Leer's manuals or instructions, if in Leer's sole judgment, such act, omission or event has detrimentally affected the physical condition, use or operating qualities of the product.

LEER MAKES NO WARRANTY, EXPRESS OR IMPLIED, BY REASON OF LAW, STATURE OR OTHERWISE, INCLUDING ANY IMPLIED WARRANTY OF MERCHANTABILITY OR FITNESS FOR A PARTICULAR USE OR PURPOSE, AND IMPLIED WARRANTIES ARE HEREBY DISCLAIMED. LEER SHALL NOT BE LIABLE FOR LOSS OF GOODS, MERCHANDISE OR OTHER PROPERTY, OR LOSS OF PROFITS, RESULTING FROM PRODUCT DEFECTS. IN NO EVENT SHALL LEER'S LIABILITY FOR ANY BREACH OF CONTRACT OR FOR ANY OTHER CLAIM BY BUYER AGAINST LEER EXCEED THE CONTRACT PRICE OF THE GOODS SOLD HEREUNDER WITH RESPECT TO WHICH SUCH CLAIM ARISES.



An Employee Owned Company

206 Leer Street - New Lisbon, WI 53950
www.leerinc.com - 888.766.5337