



SELECTRONIC ELECTRIC GRIDDLE

Commercial & Marine

124S, 124SHE, 124SCHE

136S, 136S-SC, 136SHE

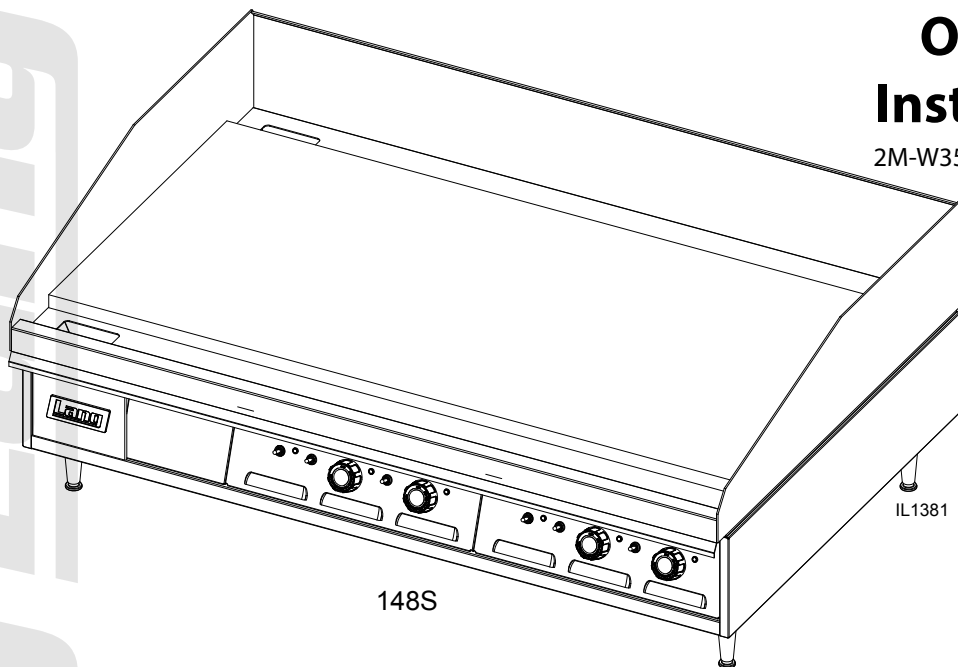
148S, 148SHE, 148SR

160S, 160SHE, 160SR, 160S-SC

172S, 172SR, 172SC

Installation and Operation Instructions

2M-W353 Rev. I 1/07/2015



148S

IL1381



SAFETY SYMBOL



These symbols are intended to alert the user to the presence of important operating and maintenance instructions in the manual accompanying the appliance.

FOR YOUR SAFETY

DO NOT STORE OR USE GASOLINE OR OTHER FLAMMABLE VAPORS AND LIQUIDS IN THE VICINTIY OF THIS OR ANY OTHER APPLIANCE.

POST IN PROMINENT LOCATION

INSTRUCTIONS TO BE FOLLOWED IN THE EVENT USER SMELLS GAS. THIS INFORMATION SHALL BE OBTAINED BY CONSULTING YOUR LOCAL GAS SUPPLIER. AS A MINIMUM, TURN OFF THE GAS AND CALL YOUR GAS COMPANY AND YOUR AUTHORIZED SERVICE AGENT. EVACUATE ALL PERSONNEL FROM THE AREA.

WARNING

IMPROPER INSTALLATION, ADJUSTMENT, ALTERATION, SERVICE OR MAINTENANCE CAN CAUSE PROPERTY DAMAGE, INJURY OR DEATH. READ THE INSTALLATION, OPERATION & MAINTENANCE INSTRUCTIONS THOROUGHLY BEFORE INSTALLING OR SERVICING THIS EQUIPMENT.



**WARNING
RISK OF FIRE OR ELECTRIC SHOCK
DO NOT OPEN**



WARNING, TO REDUCE THE RISK OF ELECTRICAL SHOCK, DO NOT REMOVE CONTROL PANEL. NO USER-SERVICABLE PARTS INSIDE. REPAIRS SHOULD BE DONE BY AUTHORIZED SERVICE PERSONNEL ONLY.

NOTICE

Using any part other than genuine Lang factory supplied parts relieves the manufacturer of all liability.

Lang reserves the right to change specifications and product design without notice. Such revisions do not entitle the buyer to corresponding changes, improvements, additions or replacements for previously purchased equipment.

Due to periodic changes in designs, methods, procedures, policies and regulations, the specifications contained in this sheet are subject to change without notice. While Lang exercises good faith efforts to provide information that is accurate, we are not responsible for errors or omissions in information provided or conclusions reached as a result of using the specifications. By using the information provided, the user assumes all risks in connection with such use.

MAINTENANCE AND REPAIRS

Contact your local dealer for service or required maintenance. Please record the model number, serial number, voltage and purchase & Installation Information in the area below and have it ready when you call to ensure a faster service.

Model No.: _____

Purchased From: _____

Serial No.: _____

Location: _____

Voltage: _____

Purchase Date: _____

1-Phase or 3 Phase: _____

Installed Date: _____



PROBLEMS, QUESTIONS or CONCERNS

Before you proceed consult you authorized Lang service agent directory
or
Call the Lang Technical Service & Parts Department at 314-678-6315.

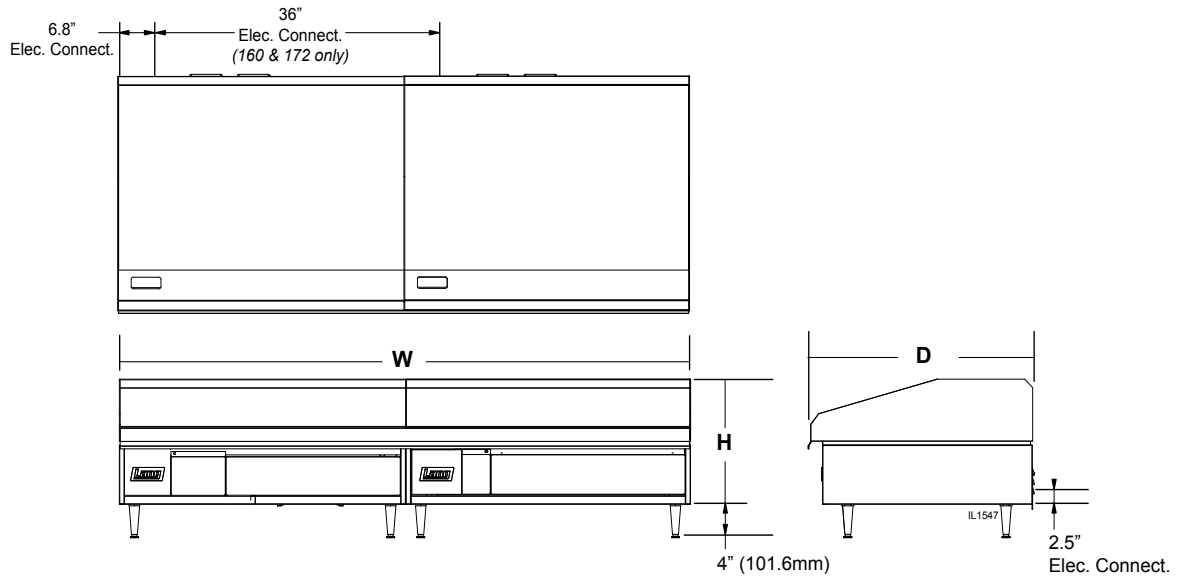
TABLE OF CONTENTS

| | |
|--|-------|
| Specifications | 4 - 5 |
| Equipment Description | 6 |
| Unpacking | 7 |
| Installation | |
| Leg Installation | 8 |
| Ventilation & Clearence | 9 |
| Electrical Connection | 9 |
| Technical Data. | 9 |
| Phasing | 9 |
| Initial Start-Up | |
| Pre-Power On | 10 |
| Power On | 10 |
| Seasoning Cooking Surface. | 10 |
| Operation | |
| General | 11 |
| Operations. | 11 |
| Suggested Times and Temperatures | 11 |
| Maintenance | |
| Cleaning | 12 |
| Troubleshooting | |
| Symptoms / Possible Causes | 13 |
| Possible Causes / Test | 14 |
| Wiring Diagram | |
| 208/240VAC | 15 |
| 480VAC | 16 |
| 380VM. | 17 |
| 5' 480V, w/CSE12 Hoods | 18 |
| Exploded View & Parts List | 19-27 |

NOTICE Service on this or any other Lang appliance must be performed by qualified personnel only. Consult your Lang Authorized Service Agent Directory. You can call our tech service number 314-678-6315 or visit our website www.langworld.com for the service agent nearest you.

EQUIPMENT SPECIFICATIONS

| Model | Height x Width x Depth (Not including legs) | Clearance from combustible surface | Weight | | Freight Class |
|-------|---|---------------------------------------|--------------------|--------------------|------------------|
| | | | Actual | Shipping | |
| 124 | 15.0" x 24.0" x 28.2" 381mm x 610mm x 717mm | Sides: 2" Back: 2" | 243 lbs. 110 kg | 280 lbs. 127 kg | 85 |
| 136 | 15.0" x 36.0" x 28.2" 381mm x 914mm x 717mm | | 368 lbs. 167 kg | 410 lbs. 186 kg | |
| 148 | 15.0" x 48.0" x 28.2" 381mm x 1219mm x 717mm | | 483 lbs. 220 kg | 515 lbs. 234 kg | |
| 160 | 15.0" x 60.0" x 28.2" 381mm x 1524mm x 717mm | | 621 lbs. 282 kg | 665 lbs. 302 kg | |
| 172 | 15.0" x 72.0" x 28.2" 381mm x 1830mm x 717mm | | 724 lbs. 329 kg | 800 lbs. 364 kg | |



EQUIPMENT SPECIFICATIONS

| Current Model | Volts AC | Hz. | PHASE | Kw TOT. | Amp 1PH. | Supply Wire 1 PH | Amp 3 Ph | | | Supply Wire 3 PH | Kw TOT. | Amp 1PH. | Supply Wire 1 PH | Amp 3 Ph | | | Supply Wire 3 PH |
|---------------|----------|-------|-------|---------|----------|------------------|----------|------|------|------------------|---------|----------|------------------|----------|----|----|------------------|
| | | | | | | | L1 | L2 | L3 | | | | | L1 | L2 | L3 | |
| 124S | 208/240 | 60 | 1/3 | 12 | 58 | 4 | 50 | 29 | 29 | 6 | | | | | | | |
| 124SC | 208/240 | 60 | 1/3 | 12 | 58 | 4 | 50 | 29 | 29 | 6 | | | | | | | |
| 124S-480V | 480 | 60 | 3 | 12 | | | 22 | 13 | 13 | 12 | | | | | | | |
| 124SHE | 208/240 | 60 | 1/3 | 12 | 58 | 4 | 50 | 29 | 29 | 6 | | | | | | | |
| 124SHE-480F | 480 | 60 | 3 | 12 | | | 22 | 13 | 13 | 12 | | | | | | | |
| 124SCHE | 208/240 | 60 | 1/3 | 12 | 58 | 4 | 50 | 29 | 29 | 6 | | | | | | | |
| 136S | 208/240 | 60 | 1/3 | 18 | 87 | 2 | 50 | 50 | 50 | 6 | | | | | | | |
| 136S-380V | 380 | 50/60 | 3 | 18 | | | 27.3 | 27.3 | 27.3 | 10 | | | | | | | |
| 136S-480V | 480 | 60 | 3 | 18 | | | 22 | 22 | 22 | 12 | | | | | | | |
| 136SHE-480V | 480 | 60 | 3 | 18 | | | 22 | 22 | 22 | 10 | | | | | | | |
| 136SB-WB | 208/240 | 60 | 1/3 | 18 | 87 | 2 | 50 | 50 | 50 | 6 | | | | | | | |
| 136SHE | 208/240 | 60 | 1/3 | 18 | 87 | 2 | 50 | 50 | 50 | 6 | | | | | | | |
| 136SCHE | 208/240 | 60 | 1/3 | 18 | 87 | 2 | 50 | 50 | 50 | 6 | | | | | | | |
| 136SC | 208/240 | 60 | 1/3 | 18 | 87 | 2 | 50 | 50 | 50 | 6 | | | | | | | |
| 136S-SC | 208/240 | 60 | 1/3 | 18 | 87 | 2 | 50 | 50 | 50 | 6 | | | | | | | |
| 136SC | 480V | 60 | 3 | 18 | | | 21.6 | 21.6 | 21.6 | 10 | | | | | | | |
| 148S | 208/240 | 60 | 1/3 | 24 | 116 | 1 | 75 | 75 | 50 | 3 | | | | | | | |
| 148S-380V | 380 | 50/60 | 3 | 24 | | | 41 | 41 | 27 | 6 | | | | | | | |
| 148S-480V | 480 | 60 | 3 | 24 | | | 33 | 33 | 22 | 8 | | | | | | | |
| 148SHE-480V | 480 | 60 | 3 | 24 | | | 33 | 33 | 22 | 8 | | | | | | | |
| 148S-SC | 208/240 | 60 | 1/3 | 24 | 116 | 1 | 75 | 75 | 50 | 3 | | | | | | | |
| 160S | 208/240 | 60 | 1/3 | 1 | 58 | 2 | 50 | 29 | 29 | 6 | 18 | 87 | 2 | 50 | 50 | 50 | 6 |
| 160S-480V | 480 | 60 | 3 | 12 | | | 22 | 13 | 13 | 12 | 18 | | | 22 | 22 | 22 | 12 |
| 160SC | 208/240 | 60 | 1/3 | 12 | 58 | 4 | 50 | 29 | 29 | 6 | 18 | 87 | 2 | 50 | 50 | 50 | 6 |
| 160SHE | 208/240 | 60 | 1/3 | 12 | 58 | 2 | 50 | 29 | 29 | 6 | 18 | 87 | 2 | 50 | 50 | 50 | 6 |
| 160SHE-480V | 480 | 60 | 3 | 12 | | | 22 | 13 | 13 | 12 | 18 | | | 22 | 22 | 22 | 12 |
| 160SCHE-480V | 480 | 60 | 3 | 12 | | | 22 | 13 | 13 | 12 | 18 | | | 22 | 22 | 22 | 12 |
| 160SR | 208/240 | 60 | 1/3 | 12 | 58 | 2 | 50 | 29 | 29 | 6 | 18 | 87 | 2 | 50 | 50 | 50 | 6 |
| 160S-SC | 208/240 | 60 | 1/3 | 12 | 58 | 2 | 50 | 29 | 29 | 6 | 18 | 87 | 2 | 50 | 50 | 50 | 6 |
| 160S-WB | 208/240 | 60 | 1/3 | 12 | 58 | 2 | 50 | 29 | 29 | 6 | 18 | 87 | 2 | 50 | 50 | 50 | 6 |
| 172S | 208/240 | 60 | 1/3 | 18 | 87 | 2 | 50 | 50 | 50 | 6 | 18 | 87 | 2 | 50 | 50 | 50 | 6 |
| 172S-480V | 480 | 60 | 3 | 18 | | | 22 | 22 | 22 | 12 | 18 | | | 22 | 22 | 22 | 12 |
| 172SR | 208/240 | 60 | 1/3 | 18 | 87 | 2 | 50 | 50 | 50 | 6 | 18 | 87 | 2 | 50 | 50 | 50 | 6 |
| 172S-SC | 208/240 | 60 | 1/3 | 18 | 87 | 2 | 50 | 50 | 50 | 6 | 18 | 87 | 2 | 50 | 50 | 50 | 6 |

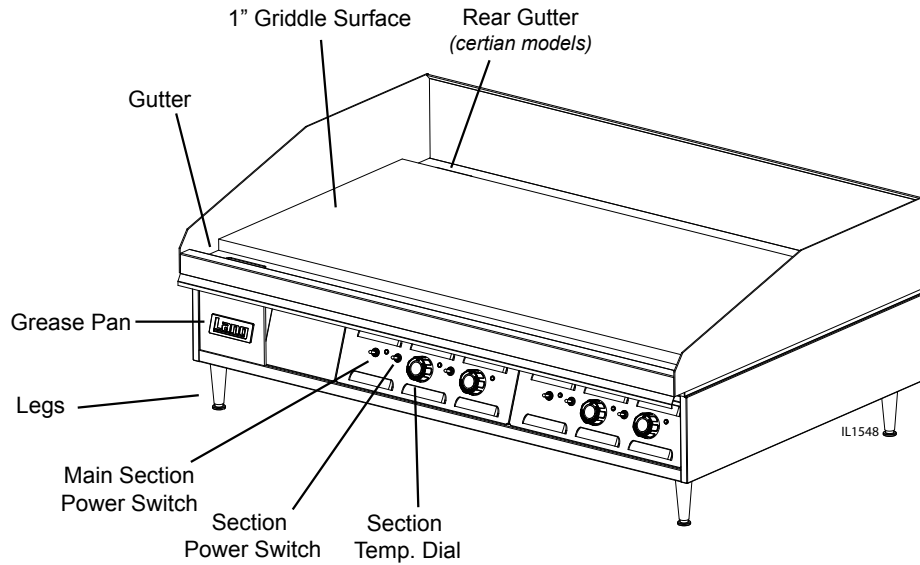
| Current Model | Volts AC | Hz. | Ph. | Kw TOT. | Amp 1PH | Supply Wire 1 PH | Amp 3 Ph | | | Supply Wire 3 PH | Kw TOT. | Amp 1PH | Supply Wire 1 PH | Amp 3 Ph | | | Supply Wire 3 PH |
|---------------|----------|-------|-----|---------|---------|------------------|----------|------|------|------------------|---------|---------|------------------|----------|------|------|------------------|
| | | | | | | | L1 | L2 | L3 | | | | | L1 | L2 | L3 | |
| 124S-208VM | 208/240 | 60 | 1/3 | 12 | 58 | 4 | 50 | 29 | 29 | 6 | | | | | | | |
| 124S-440VM | 440V | 50/60 | 3 | 10.1 | | | 20 | 12 | 12 | 12 | | | | | | | |
| 124S-480VM | 480V | 60 | 3 | 12 | | | 22 | 13 | 13 | 12 | | | | | | | |
| 136SC-208VM | 208/240V | 60 | 1/3 | 18 | 87 | 2 | 50 | 50 | 50 | 6 | | | | | | | |
| 136S-380VM | 380V | 60 | 3 | 18 | | | 27.3 | 27.3 | 27.3 | 10 | | | | | | | |
| 136S-440VM | 440V | 60 | 3 | 18 | | | 23.6 | 23.6 | 23.6 | 12 | | | | | | | |
| 136SC-440VM | | | | | | | | | | | | | | | | | |
| 136S-480VM | 480V | 60 | 3 | 18 | | | 22 | 22 | 22 | 12 | | | | | | | |
| 148S-480VM | 480V | 60 | 3 | 24 | | | 33 | 33 | 22 | 8 | | | | | | | |
| 160S-M | 208/240V | 60 | 1/3 | 12 | 58 | 2 | 50 | 29 | 29 | 6 | 18 | 87 | 2 | 50 | 50 | 50 | 6 |
| 172S-440VM | 440V | 60 | 3 | 18 | | | 23.6 | 23.6 | 23.6 | 12 | 18 | | | 23.6 | 23.6 | 23.6 | 12 |
| 172SM | 208/240V | 60 | 1/3 | 18 | 87 | 2 | 50 | 50 | 50 | 6 | 18 | 87 | 2 | 50 | 50 | 50 | 6 |
| 172S-480VM | 480V | 60 | 3 | 18 | | | 22 | 22 | 22 | 12 | 18 | | | 22 | 22 | 22 | 12 |

SPECIFICATIONS MARINE

MARINE EQUIPMENT IS APPROVED FOR INSTALLATION ONLY ON VESSELS GREATER THAN 65 FEET IN LENGTH, IN ACCORDANCE WITH USCG REGULATIONS IN TITLE 46 CFR 110-113.

ANY WIRING USED IN THE INSTALLATION OF THIS APPLIANCE MUST BE STRANDED COPPER.

EQUIPMENT DESCRIPTION



Exterior Construction

The griddle dimensions are 17" (43.18cm) High, 30" (76.20cm) Deep, and width is dependent on the actual model number.

The Sides, Bottom, and Rear wall are constructed of double wall stainless steel, which allows closer installation to combustible surfaces.

The griddle surface is made of 1" thick, highly polished steel to reduce hot and cold spots, recovery problems, warping, and ensure even heat to the edges of the griddle.

Controls

Each twelve-inch section has its own temperature selector switch that snaps into place to lock in any temperature from 175°F to 450°F (79°C to 232°C) in 25° increments.

Each twelve-inch section of the griddle is controlled by an area sensitive RTD probe, which can sense and react to a temperature change of +/- 4°F.

Each twelve-inch section has a set of 6 K.W. elements for high efficiency, quick recovery and outstanding performance

Technical

The 100 Series Selectronic griddle operates on either 208/240V or 480V, at either single or three phase.

This must be specified when ordering.

Minimum clearances: 2" from side and back

NOTICE The data plate is on the right side of the griddle. The oven voltage, wattage, serial number, wire size, and clearance specifications are on the data plate. This information should be carefully read and understood before proceeding with the installation.

UNPACKING

Receiving the Griddle

Upon receipt, check for freight damage, both visible and concealed. Visible damage should be noted on the freight bill at the time of delivery and signed by the carrier's agent. Concealed loss or damage means it does not become apparent until the merchandise has been unpacked. If concealed loss or damage is discovered upon unpacking, make a written request for inspection by the carrier's agent within 15 days of delivery. All packing material should be kept for inspection. **Do not return damaged merchandise to Star Manufacturing Company. File your claim with the carrier.**



Location

Prior to un-crating, move the oven as near to its intended location as practical. The crating will help protect the unit from the physical damage normally associated with moving it through hallways and doorways.

Un-crating

The griddle will arrive completely assembled inside a wood frame and strapped to a skid. Cut the straps and remove the wood frame.

The oven can now be removed from the skid.

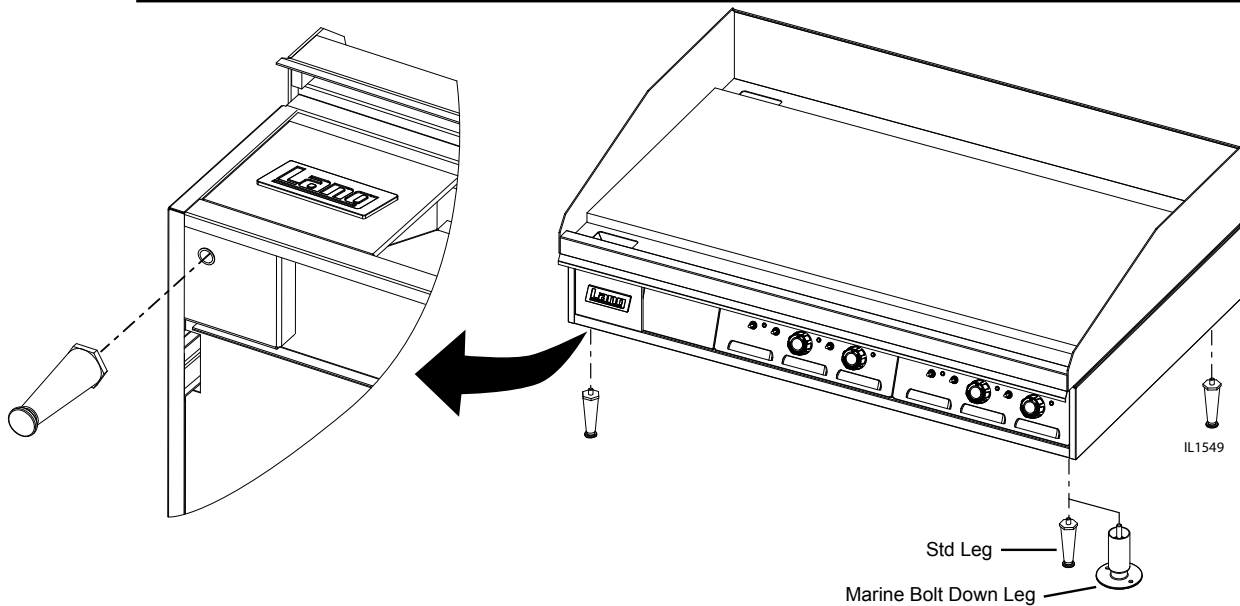


CAUTION

THE UNIT IS EXTREMELY HEAVY. FOR SAFE HANDLING, INSTALLER SHOULD OBTAIN HELP AS NEEDED, OR EMPLOY APPROPRIATE MATERIALS HANDLING EQUIPMENT (SUCH AS A FORKLIFT, DOLLY, OR PALLET JACK) TO REMOVE THE UNIT FROM THE SKID AND MOVE IT TO THE PLACE OF INSTALLATION.

ANY STAND, COUNTER OR OTHER DEVICE ON WHICH OVEN WILL BE LOCATED MUST BE DESIGNED TO SUPPORT THE WEIGHT OF THE GRIDDLE. SHIPPING STRAPS ARE UNDER TENSION AND CAN SNAP BACK WHEN CUT.

INSTALLATION



Above: typical leg installation.

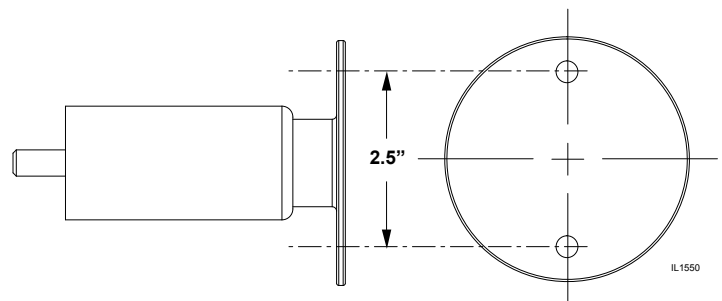
Leg Installation

There are four, 4" legs provided for 2, 3 and 4 foot griddles.

There are eight 4" legs provided for 5 and 6 foot griddles.

The legs are shipped in the grease drawers of the griddle. Install them into the threaded holes on the underside of the griddle body.

Leveling adjustment may be done by screwing the bottom portion of the leg in and out.



For bolt down legs see above illustration for dimensions.

DANGER: THIS APPLIANCE MUST BE GROUNDED AT THE TERMINAL PROVIDED. FAILURE TO GROUND THE APPLIANCE COULD RESULT IN ELECTROCUTION AND DEATH.



INSTALLATION OF THE UNIT MUST BE DONE BY PERSONNEL QUALIFIED TO WORK WITH ELECTRICITY AND PLUMBING. IMPROPER INSTALLATION CAN CAUSE INJURY TO PERSONNEL AND/OR DAMAGE TO EQUIPMENT. UNIT MUST BE INSTALLED IN ACCORDANCE WITH ALL APPLICABLE CODES.

NOTICE: The data plate is located behind access panel between controls and grease drawer. The grill voltage, wattage, serial number, wire size, and clearance specifications are on the data plate. This information should be carefully read and understood before proceeding with the installation.

NOTICE: The installation of any components such as a vent hood, grease extractors, fire extinguisher systems, must conform to their applicable National, State and locally recognized installation standards.



ALWAYS KEEP THE AREA NEAR THE APPLIANCE FREE FROM COMBUSTIBLE MATERIALS.

KEEP FLOOR IN FRONT OF EQUIPMENT CLEAN AND DRY. IF SPILLS OCCUR, CLEAN IMMEDIATELY, TO AVOID THE DANGER OF SLIPS OR FALLS.

INSTALLATION cont.

Ventilation and Clearances

Standard minimum clearance from combustible construction is as follows.

- 2" from side
- 2" from back

These griddles may be set directly, without legs, on a curbed base or **non-combustible** surface.

If the griddle is set without legs on a **non-combustible** floor or a curbed base, maintain a 4-inch back clearance.

Do not install the griddle directly against a **non-combustible** back wall or surface.

Do not install the griddle closer than 12 inches from an uncontrolled heat source (char broiler etc.).

Keep the appliance area free and clear of combustible material and do not obstruct the flow of combustion or ventilation air.

Electrical Connection

There is one power supply connection on the 2, 3, and 4-foot griddles. There are two power supply connections on 5 and 6-foot griddles. Refer to the power supply chart in the Technical Data portion of this manual, for proper power supply size.

There is (1) one 1 1/4-inch conduit knockout on 2, 3 and 4-foot griddles located at the rear of the griddle, through the back and the bottom of the griddle body. There are (2) two 1 1/4-inch conduit knockouts provided on the 5 and 6-foot griddles. Use a supply wire suitable for at least 90 degree centigrade.

This Selectronic griddle is shipped from the factory, wired for 208/240 or 480 volts, the 208/240 griddle is a dual voltage design. Jumper wires on terminal strip next to the main power supply connection determine the griddle voltage. For a 208-volt power supply, leave the jumpers in place. For a 240-volt power supply disconnect the jumpers as indicated on the tag on the terminal strip. The 480-volt griddle can be operated on 480 volts only and must be specified when ordering.

Technical Data

| MODEL NUMBER | TOTAL K.W. | NOMINAL AMPS PER LINE | | | | | | | | | SINGLE PHASE | | |
|--------------|------------|-----------------------|------|------|----------|------|------|----------|------|------|--------------|------|----|
| | | THREE PHASE | | | | | | | | | 208V | 240V | |
| | | 208 Volt | | | 240 Volt | | | 480 Volt | | | | | |
| | | L1 | L2 | L3 | L1 | L2 | L3 | L1 | L2 | L3 | | | |
| 24" | 12 | 50 | 28.8 | 28.8 | 43.3 | 25 | 25 | 21.7 | 12.5 | 12.5 | 57.7 | 50 | |
| 36" | 18 | 50 | 50 | 50 | 43.3 | 43.3 | 43.3 | 21.7 | 21.7 | 21.7 | 86.5 | 75 | |
| 48" | 24 | 75 | 75 | 50 | 65 | 65 | 43.3 | 32.5 | 32.5 | 21.7 | 115.5 | 100 | |
| 60" | #1 | 18 | 50 | 50 | 50 | 43.3 | 43.3 | 43.3 | 21.7 | 21.7 | 21.7 | 86.5 | 75 |
| | #2 | 12 | 50 | 28.8 | 28.8 | 43.3 | 25 | 25 | 21.7 | 12.5 | 12.5 | 57.7 | 50 |
| 72" | #1 | 18 | 50 | 50 | 50 | 43.3 | 43.3 | 43.3 | 21.7 | 21.7 | 21.7 | 86.5 | 75 |
| | #2 | 18 | 50 | 50 | 50 | 43.3 | 43.3 | 43.3 | 21.7 | 21.7 | 21.7 | 86.5 | 75 |

Phasing

All griddles are shipped from the factory set up for a three-phase service. Rearrange the wires in the power supply terminal block to convert the griddle to single phase. Re-phasing the griddle is not chargeable to Lang Manufacturing Company as warranty. To convert to single-phase have a Lang Authorized Service Agent, follow this chart.

| MODEL NUMBER | PHASING BY WIRE NUMBER | | | | |
|--------------|------------------------|--------|--------|--------------|---------|
| | THREE PHASE | | | SINGLE PHASE | |
| | LINE 1 | LINE 2 | LINE 3 | LINE 1 | LINE 2 |
| 124S | 1,4 | 2 | 3 | 1,3 | 2,6 |
| 136S | 1,4 | 2,5 | 3,6 | 1,3,5 | 2,4,6 |
| 148S | 1,4,7 | 2,5,8 | 3,6,9 | 1,3,5,7 | 2,4,6,8 |
| 160S #1 | 1,4 | 2,5 | 3,6 | 1,3,5 | 2,4,6 |
| 160S #2 | 1,4 | 2 | 3 | 1,3 | 2,6 |
| 172S #1 | 1,4 | 2,5 | 3,6 | 1,3,5 | 2,4,6 |
| 172S #2 | 1,4 | 2,5 | 3,6 | 1,3,5 | 2,4,6 |

INITIAL START UP

Pre-Power On

Before starting the griddle for the first time, clean the griddle body and cooking surface.

Use a mild soap and water solution, then rinse with clear water and dry.

Power On

Set the main power switch, located at the far left of the control panel, to the “ON” (up) position (there are two “ON” switches on 5 and 6 foot griddles).

Set each cooking section’s power switch, located next to each temperature dial, to the “ON” (up) position.

Set the temperature dials to 200°F.

Heat the griddle at 200°F (93°C) for 2 hours to evaporate any moisture that may be in the elements.

After 2 hours at 200°F (93°C), turn the temperature up to 350°F (176°C) for ½ hour.

After the griddle reaches 350°F (176°C) for ½ hour, turn the griddle up another 50°F (10°C) for another ½ hour and repeat this until it is at 450°F (232°C) for ½ hour.

The unit may emit a small amount of smoke as the cooking surface passes the 300°F (148°C) point.

Do not be alarmed as the smoke is caused by oils associated with the manufacturing process and will stop when the griddle reaches 350°F (176°C).

Seasoning Cooking Surface (Non-Chrome Only)

The cooking surface must be “seasoned” in order to eliminate product sticking during cooking.

To season, heat the griddle to 250°F (121°C).

Once at 250°F (121°C), coat the cooking surface with non-salted vegetable oil.

Allow the griddle to stand at 250°F (121°C) until the cooking surface looks dry then coat it again.

Heat the griddle to 350°F (176°C) and repeat the procedure.

NOTICE: During the first few hours of operation you may notice a small amount of smoke coming off the griddle, and a faint odor from the smoke. This is normal for a new griddle and will disappear after the first few hours of use.

OPERATION

General

The suggested time and temperature chart (below) is provided as a guide for the products listed only. If different temperature settings are to be used, select one side of the griddle and operate at the lowest temperature. Adjoining sections should be set at progressively higher temperatures. Do not try to operate the end sections hot and the center sections cool.



ALWAYS KEEP THE AREA NEAR THE APPLIANCE FREE FROM COMBUSTIBLE MATERIALS.

CAUTION KEEP FLOOR IN FRONT OF EQUIPMENT CLEAN AND DRY. IF SPILLS OCCUR, CLEAN IMMEDIATELY, TO AVOID THE DANGER OF SLIPS OR FALLS.

Operations

An understanding of how the griddle sections are controlled will be a valuable aid in loading product on your unit.

Each 12-inch section of your griddle is independently controlled by a temperature controller. The temperature control sensor is mounted in the center of each cooking section under the griddle plate.

If the product is loaded directly over the temperature sensor, that section will turn on and the burner will heat the entire cooking section. If the product is loaded to the side, front or back of the temperature sensor, the thermostat will react to the temperature change much slower.

During slow periods with minimal loads, do not load directly over the thermostat sensors as this will unnecessarily turn the burners on and overheat the remainder of the section not being utilized.

| SUGGESTED TIMES AND TEMPERATURES | | |
|---|------------------------------|-------------------|
| PRODUCTS | TEMPERATURE F / C | TIME (MIN) |
| HAMBURGER | 350°F / 176°C | |
| 2 patties per LB | | 6 to 8 |
| 4 patties per LB | | 4 to 6 |
| 6 patties per LB | | 3 to 4 |
| STEAKS | | |
| 1/2 to 3/4 inch thick, cooked medium | 375°F / 190°C | 5 to 7 |
| 3/4 to 1 inch thick, cooked medium | | 8 to 10 |
| | | |
| Lamb Chops | 350°F / 176°C | 6 to 8 |
| Pork Chops | | 6 to 8 |
| | | |
| Salmon | 350°F / 176°C | 6 to 8 |
| Halibut | 325°F / 162°C | 6 to 8 |
| Snapper | | 6 to 8 |
| | | |
| Hash Brown Potatoes | 375°F / 190°C | 3 to 4 |
| Bacon | 350°F / 176°C | 3 to 4 |
| Sausage Links or Patties | | 3 to 4 |
| Ham (Pre-cooked) | 375°F / 190°C | 2 |
| | | |
| Eggs | 275°F / 135°C | 2 to 4 |
| Note: The times and temperatures in this chart are intended as a general guide and starting point. Your actual times and temperatures may vary from this chart. | | |

Turn the product and continue cooking until it has reached its desired degree of doneness.

Remove the product from the griddle.

When reloading the griddle, first use the griddle surface on which a previous load was not placed. This will help insure the proper griddle temperature.

MAINTENANCE & CLEANING

Cleaning

- Always start with a cold griddle.
- The stainless exterior can easily be cleaned using a good non-abrasive cleaner.
- Always follow the cleaner manufacturer's instructions when using any cleaner.
- Always apply these cleaners when the griddle is cold and rub in the direction of the metal's grain.

Griddle Surface Care (non-chromium surfaces)

It takes very little time and effort to keep the griddle attractive and performing at top efficiency. If grease is permitted to accumulate, it will form a gummy cake and then carbonize into a hard substance which is extremely difficult to remove. To prevent this condition, the following suggestions for cleanliness should be followed:

- After each use, scrape the griddle with a scraper or flexible spatula to remove excess grease and food. A waste drawer is provided for the scrapings. If there is an accumulation of burned on grease and food, the griddle should be thoroughly scoured and re-seasoned. Use pumice or griddle stone while the griddle is warm.

Do not use steel wool because of the danger of steel slivers getting into the food.

Griddle Care (Chromium Surfaces)

It takes very little time and effort to keep this Industrial Chromium griddle surface sparkling clean and performing at top efficiency. DO NOT allow grease to accumulate as it will carbonize and become difficult to remove. To prevent this condition the following cleaning suggestions should be followed:

1. Remove excess grease and food regularly with a 4" (100mm) wide Razor Sharp type scraper and wipe surface with a damp cloth if desired.
2. Following the scraping, for end of the day cleaning, a damp cloth and a non-silicated, nonabrasive, non-chlorinated cleaner such as Bon-Ami may be used to wipe surface clean, followed by wiping with a clean wet cloth.
3. Follow steps 2 and 3 from Griddle Care (Non-Chromium Surfaces) above.

CAUTION

1. **Never** use pumice, griddle stones, or abrasives on a chromium surface.
2. **Never** strike a chromium griddle surface with a sharp instrument or spatula edge.
3. **Never** use steel wool.
4. **Never** use commercial liquid grill cleaner on the griddle surface.
5. **Abusing** surface voids the warranty.



WARNING

KEEP WATER AND SOLUTIONS OUT OF CONTROLS. NEVER SPRAY OR HOSE CONTROL CONSOLE.



CAUTION

MOST CLEANERS ARE HARMFUL TO THE SKIN, EYES, MUCOUS MEMBRANES AND CLOTHING. PRECAUTIONS SHOULD BE TAKEN TO WEAR RUBBER GLOVES, GOGGLES OR FACE SHIELD AND PROTECTIVE CLOTHING. CAREFULLY READ THE WARNING AND FOLLOW THE DIRECTIONS ON THE LABEL OF THE CLEANER TO BE USED.

NOTICE: Never leave a chlorine sanitizer in contact with stainless steel surfaces longer than 10 minutes. Longer contact can cause corrosion.

TROUBLESHOOTING

Symptoms

What follows is a chart of symptoms and possible causes to aid in diagnosing faults with the griddle.

Refer to the Symptoms column to locate the type of failure then to the possible cause for the items to be checked.

To test for a possible causes refer to the TEST section and locate the possible cause then refer to test to identify test procedures.

| SYMPTOM | POSSIBLE CAUSE |
|-----------------------------|---|
| Whole Griddle will not heat | <ul style="list-style-type: none">• No Power to Griddle• Failed Power switch• Failed Transformer. |
| One Section will not heat | <ul style="list-style-type: none">• Failed Power switch (for that section)• Failed Probe• Failed Circuit board• Failed 12-position switch• Failed contactor• Failed Element. |
| Product Burning | <ul style="list-style-type: none">• Product left on griddle too long• Failed Probe• Failed Circuit board• Failed 12-position switch |
| Product Under cooked | <ul style="list-style-type: none">• Product removed too soon• Failed Probe• Failed Circuit board• Failed 12-position switch |

TROUBLESHOOTING continued

NOTICE: Service on this, or any other, LANG appliance must be performed by qualified personnel only. Consult your Lang Authorized Service Agent Directory or call the factory at 314-678-6315, or WWW.LANGWORLD.COM For the service agent nearest you.



WARNING

BOTH HIGH AND LOW VOLTAGES ARE PRESENT INSIDE THIS APPLIANCE WHEN THE UNIT IS PLUGGED/WIRED INTO A LIVE RECEPTACLE. BEFORE REPLACING ANY PARTS, DISCONNECT THE UNIT FROM THE ELECTRIC POWER SUPPLY.

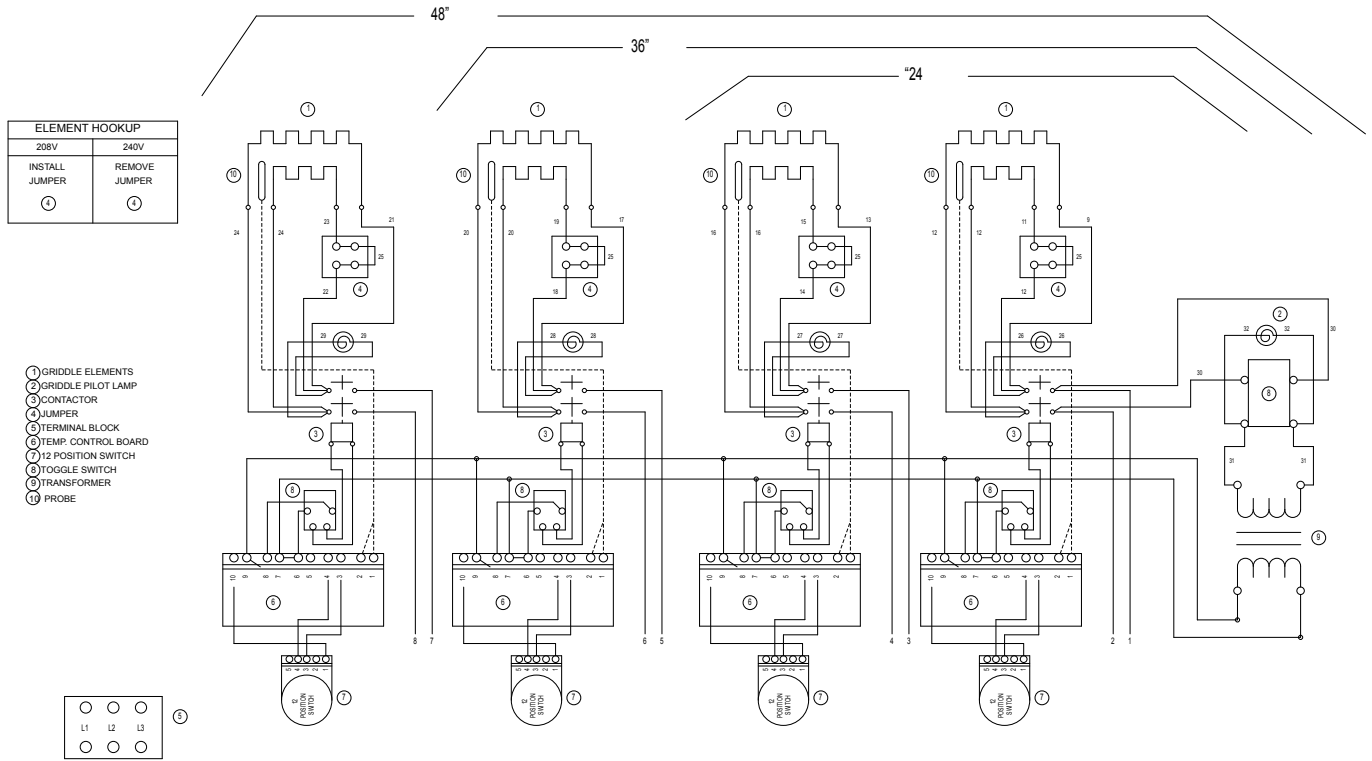
If an item on the list is followed by an asterisk (*), the work should be done by a factory authorized service representative.

| POSSIBLE CAUSE | TEST |
|----------------------------|--|
| Product is cooked too long | • No test available, operational condition |
| Failed Probe | • Check probe for proper resistance* |
| Failed Circuit board | • Confirm that Circuit board is getting correct voltage and putting out correct voltage* |
| Failed Transformer | • Check both Primary and Secondary coils for correct voltage* |
| Failed Contactor | • Remove the wires from the contactor coil and check for continuity across the contactor coil connection* • Ensure the contactor moveable points move freely up and down* |
| Failed Element | • Confirm that Elements are getting correct voltage and have continuity* |



CAUTION

USE OF ANY REPLACEMENT PARTS OTHER THAN THOSE SUPPLIED BY LANG OR THEIR AUTHORIZED DISTRIBUTORS CAN CAUSE BODILY INJURY TO THE OPERATOR AND DAMAGE TO THE EQUIPMENT AND WILL VOID ALL WARRANTIES.



NOTE: 60" & 72" HAVE TWO POWER SUPPLY CONNECTIONS
 60": CONN # 1 USE LG36
 CONN # 2 USE LG24
 72": CONN # 1 USE LG36
 CONN # 2 USE LG36

Lang DIVN BY: DLG / DWN DATE: 12-10-03
 DESCRIPTION: W/D GRIDDLE 208/240VAC
 CAD FILE: FROM ACAD / DWG. NO: 61114-14 / SHEET 1 OF 1 / REV: B

| MODEL | K.W. | | | TOTAL |
|-------|-------|-------|-------|-------|
| | L1-L2 | L2-L3 | L3-L1 | |
| 24 | 6.0 | 0.0 | 6.0 | 12.0 |
| 36 | 6.0 | 6.0 | 6.0 | 18.0 |
| 48 | 12.0 | 6.0 | 6.0 | 24.0 |

| SERVICE CONNECTIONS | | | | | |
|---------------------|-------|-----|--------------|---------|----|
| THREE PHASE | | | SINGLE PHASE | | |
| L1 | L2 | L3 | L1 | L2 | L3 |
| 1.4 | 2 | 3 | 1.3 | 2.4 | |
| 1.4 | 2.5 | 3.6 | 1.3.5 | 2.4.6 | |
| 1.4.7 | 2.5.8 | 3.6 | 1.3.5.7 | 2.4.6.8 | |

Note:

1. Add one more section for a single connection "48"
2. Add two more sections for a 60"
3. This wiring diagram shows 1/2 section for a 72" model
4. Do not use more than 4 contactors to one transformer

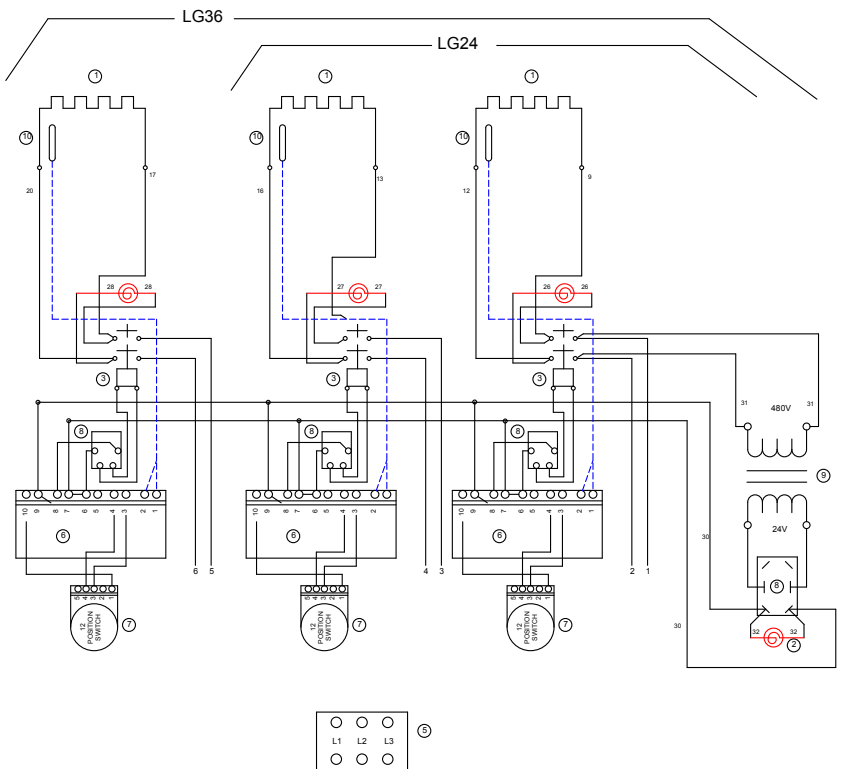
- ① GRIDDLE ELEMENTS
 ② GRIDDLE PILOT LAMP
 ③ CONTACTOR
 ④ JUMPER
 ⑤ TERMINAL BLOCK
 ⑥ TEMP. CONTROL BOARD
 ⑦ 12 POSITION SWITCH
 ⑧ TOGGLE SWITCH
 ⑨ TRANSFORMER
 ⑩ PROBE

NOTE: SOME 48" AND ALL 60" & 72" GRIDDLES HAVE TWO POWER SUPPLY CONNECTIONS

48": CONN # 1 USE LG24
 CONN # 2 USE LG24

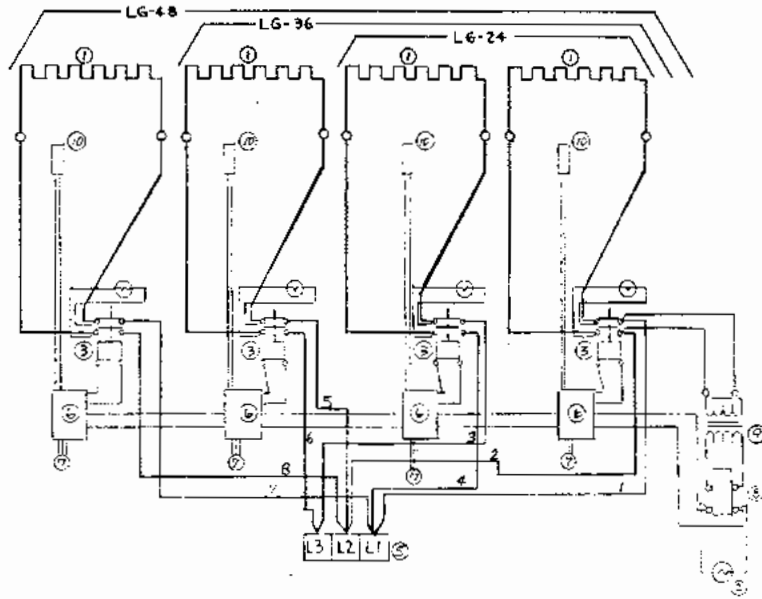
60": CONN # 1 USE LG36
 CONN # 2 USE LG24

72": CONN # 1 USE LG36
 CONN # 2 USE LG36



Lang DWN BY: SRC / DWN DATE: 10-28-96
 DESCRIPTION: LANG-GRIDDLE 480VAC SELECTRONIC
 CAD FILE: FROM ACAD / DWG. NO: 61114-17 / SHEET 1 OF 1 / REV: C

- ① GRIDDLE ELEMENTS
- ② GRIDDLE PILOT LAMP
- ③ GRIDDLE CONTACTOR
- ④ TERMINAL BLOCK
- ⑤ TEMPERATURE CONTROL BOARD
- ⑥ 12 POSITION SWITCH
- ⑦ TOGGLE SWITCH
- ⑧ TRANSFORMER
- ⑨ PROBE



| MODEL | KW | | | | SERVICE CONNECTION | | |
|-------|-------|-------|-------|-------|--------------------|-------|-----|
| | L1-L2 | L2-L3 | L3-L1 | TOTAL | L1 | L2 | L3 |
| LG-24 | 6.0 | 0.0 | 6.0 | 12.0 | 1,4 | 2 | 3 |
| LG-36 | 6.0 | 6.0 | 6.0 | 18.0 | 1,4 | 2,5 | 3,6 |
| LG-48 | 12.0 | 6.0 | 6.0 | 24.0 | 1,4,7 | 2,5,8 | 3,6 |

| | AMPS PER LINE | | |
|-------|---------------|------|------|
| | L1 | L2 | L3 |
| LG-24 | 27.3 | 13.7 | 13.7 |
| LG-36 | 27.3 | 27.3 | 27.3 |
| LG-48 | 41 | 41 | 27.3 |

380 V SELECTRONIC

| QTY | MATERIAL |
|-----|--------------|
| 1 | LANG GRIDDLE |
| | 380 V AC |
| | JAS 9-15-88 |
| | FJD 9-28-88 |
| | 6114-17 |

| REVISIONS | | | | | |
|-----------|---|--------|------------|--------|----------|
| REV | DESCRIPTION | REV BY | REV DATE | CHK BY | CHK DATE |
| - | ECO 5956, INITIAL RELEASE, REPLACED 61114-17 | DJS | 7/25/2007 | | |
| | ECO 6254 Revise wire numbers to match production, add wire nuts to match production | DJS | 10/26/2007 | | |
| B | ECO 10647, Removed Overtemp Stats | DJS | 5/10/2011 | | |

Note:

- Add one more section for a single connection LG-48 (148S)
- Add two more sections for a LG-60 (160S)
- This wiring diagram shows 1/2 section for a LG-72 (172S) model
- Do not use more than 4 contactors to one transformer

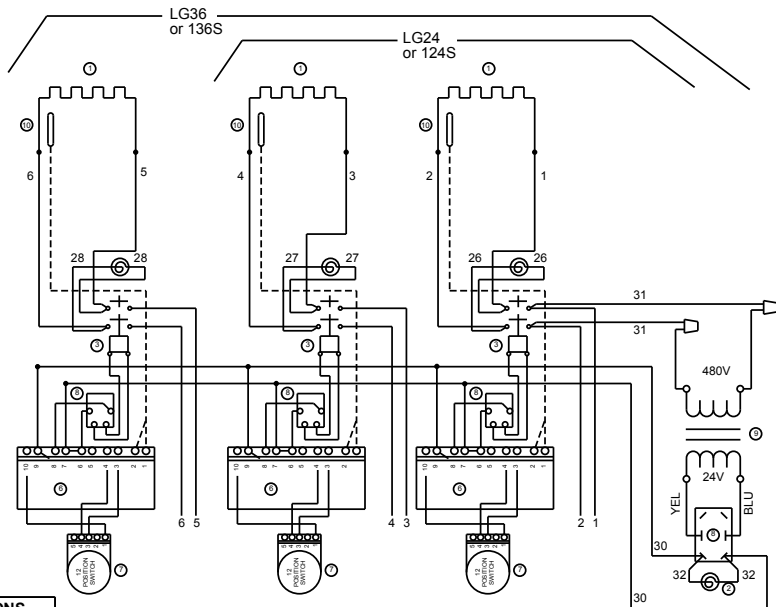
- ① GRIDDLE ELEMENTS
- ② GRIDDLE PILOT LAMP
- ③ CONTACTOR
- ④ JUMPER
- ⑤ TERMINAL BLOCK
- ⑥ TEMP CONTROL BOARD
- ⑦ 12 POSITION SWITCH
- ⑧ TOGGLE SWITCH
- ⑨ TRANSFORMER, CLASS 2
- ⑩ PROBE

NOTE: SOME LG48 (148S) AND ALL LG60 (160S) & LG72 (172S) HAVE TWO POWER SUPPLY CONNECTIONS

LG48 (148S): CONN # 1 USE LG24 (124S)
CONN # 2 USE LG24 (124S)

LG60 (160S): CONN # 1 USE LG36 (136S)
CONN # 2 USE LG24 (124S)

LG72 (172S): CONN # 1 USE LG36 (136S)
CONN # 1 USE LG36 (136S)



| AMP TOTAL | | | |
|-----------|----|----|----|
| Model | L1 | L2 | L3 |
| 24 | 22 | 13 | 13 |
| 36 | 22 | 22 | 22 |
| 48 | 33 | 33 | 22 |
| 60 | 43 | 33 | 33 |
| 72 | 43 | 43 | 43 |

| SERVICE CONNECTIONS | | | |
|---------------------|-------------|-------|-----|
| Model | Three Phase | | |
| Model | L1 | L2 | L3 |
| 24 | 1,4 | 2 | 3 |
| 36 | 1,4 | 2,5 | 3,6 |
| 48 | 1,4,7 | 2,5,8 | 3,6 |



Lang

UNLESS OTHERWISE SPECIFIED
DIMENSIONS ARE IN INCHES
TOLERANCES ARE:
DECIMALS ANGLES
X ± .05 ± .5°
XX ± .03
XXX ± .015

MATERIAL PART #:

MATERIAL TYPE:

BLANK DIMS.: X

BLANK AREA:

SQ in

DWN. BY: DJS / DWN. DATE: 7/25/07 / REV. BY: / REV. DATE: / CHK. BY: / CHK. DATE: / CAD FILE: / SHEET 1 OF 1
DESCRIPTION: LANG-GRIDDLE 480VAC SELECTRONIC / DWG. NO: 2M-61114-W50/REV: B

STAR MANUFACTURING INTERNATIONAL, INC.
 ST. LOUIS, MO. 63143, USA

Lang

THIS DRAWING CONTAINS INFORMATION CONFIDENTIAL TO STAR MFG. INT'L
 INC. NO REPRODUCTION OR DISCLOSURE OF ITS CONTENTS IS PERMITTED.

MATERIAL
 FINISH
 DR: DJS

MODEL NO. 2M-61114-W65

PART NO. 2M-61114-W65

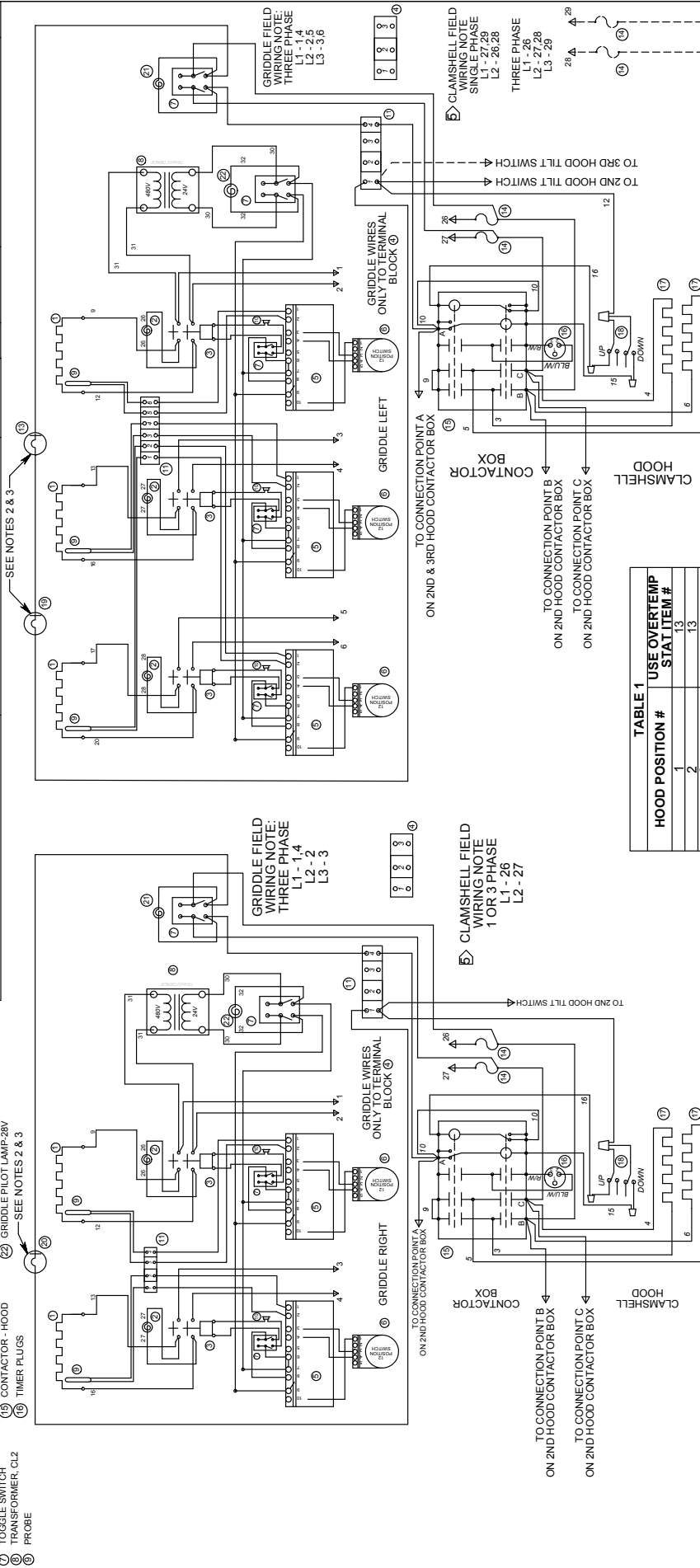
TITLE W/D 5 SELECTRONIC ELECT GRID W/ CSE12 HOODS - 480V

REV. DATE/ECO **REVISIONS** DESCRIPTION OF CHANGE **DR**

DATE: 10/12/2009 CK: **REV. #15** ANGLE 8x1"

TOLERANCE: UNLESS NOTED: .005 ± .015

SEE NOTES 2 & 3



LEGEND:

- 17 HOOD ELEMENTS
- 18 OVERTEMP STAT - GRID
- 19 HOOD TILT SWITCH
- 20 HOOD OVERTEMP STAT #2
- 21 HOOD OVERTEMP STAT #3
- 22 CLAMSHELL PILOT LAMP-250V
- 23 GRIDDLE PILOT LAMP-250V
- 24 CONTACTOR - HOOD
- 25 GRIDDLE PILOT LAMP-250V
- 26 TIMER PLUGS
- 27 PROBE
- 28 GRIDDLE FIELD WIRING NOTE: THREE PHASE L1 - 1.4 L2 - 2.5 L3 - 3.6
- 29 CLAMSHELL FIELD WIRING NOTE: THREE PHASE L1 - 26 L2 - 26.28 L3 - 29

TABLE 1 USE OVERTEMP STAT ITEM #

| HOOD POSITION # | USE OVERTEMP STAT ITEM # |
|-----------------|--------------------------|
| 1 | 13 |
| 2 | 13 |
| 3 | 19 |
| 4 | 20 |
| 5 | 20 |
| 1.2 | 13 |
| 1.3 | 13.19 |
| 1.4 | 13.20 |
| 1.5 | 13.20 |
| 2.3 | 19 |
| 2.4 | 13.20 |
| 2.5 | 13.20 |
| 3.4 | 13.20 |
| 3.5 | 13.20 |
| 4.5 | 13.20 |
| 1.2.3 | 13.19 |
| 1.2.4 | 13.20 |
| 1.2.5 | 13.20 |
| 1.4.5 | 13.20 |
| 1.5 | 13.20 |
| 1.4.5 | 13.20 |

TABLE 1 USE OVERTEMP STAT ITEM #

| HOOD POSITION # | USE OVERTEMP STAT ITEM # |
|-----------------|--------------------------|
| 2.3.4 | 19.20 |
| 2.3.5 | 19.20 |
| 2.4.5 | 19.20 |
| 3.4.5 | 19.20 |
| 1.2.4.5 | 13.20 |
| 2.4.5 | 19.20 |
| 1.4.5 | 13.20 |
| 1.4.5 | 13.20 |

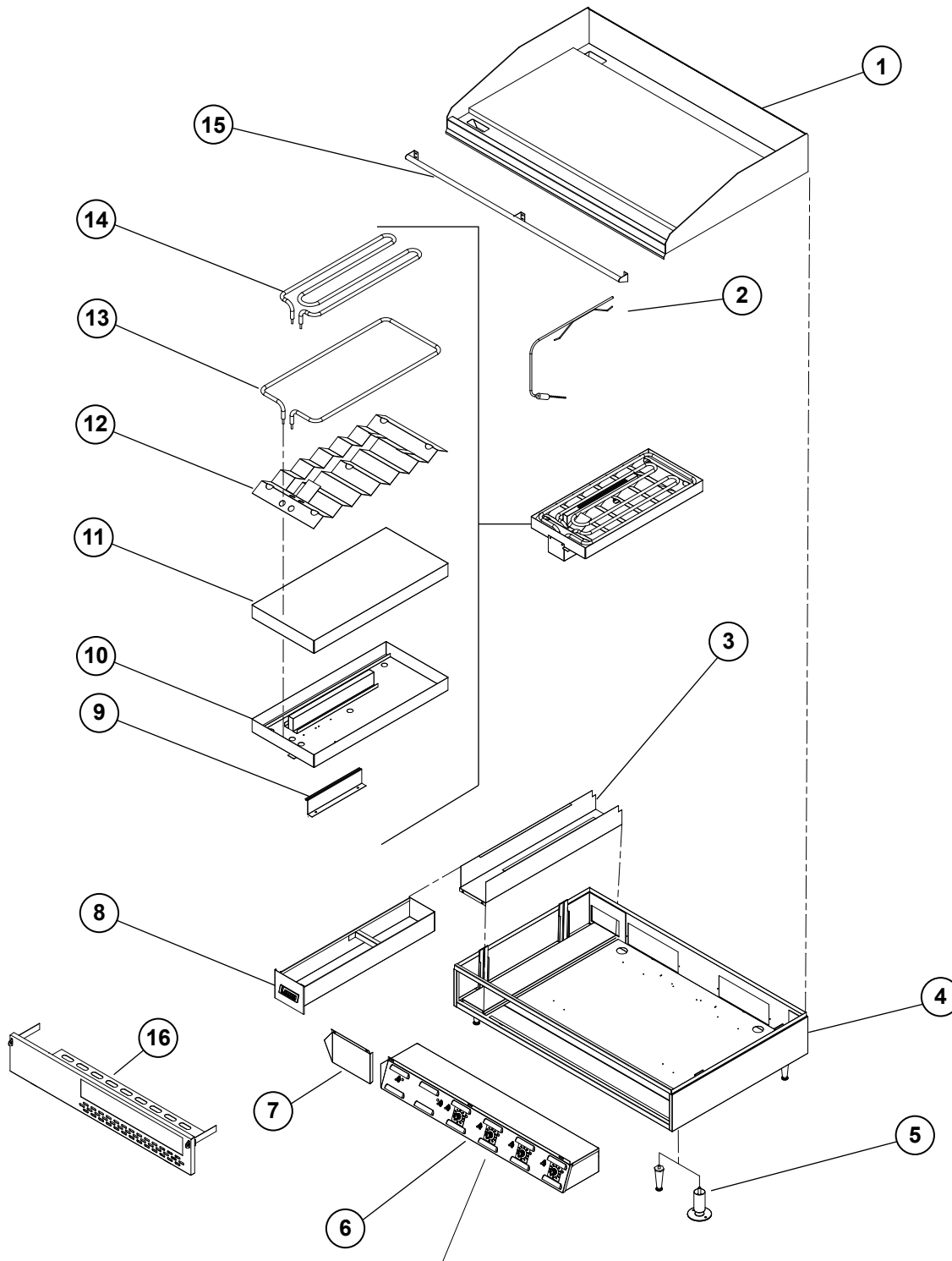
COMBINATIONS 13.19 & 20

NOTES:

- FUSE BLOCK PAIR REQUIRED FOR EVERY 1 OR 2 CLAMSHELL COMBINATION ON EACH POWER CONNECTION.
- OVERTEMP STATS ARE LOCATED ON THE UNDERSIDE OF THE GRIDDLE PLATE. SEE TABLE 1 FOR ITEM 13.19 & 20 USAGE.
- DASHED COMPONENTS ARE REQUIRED ONLY WHEN 3 HOODS ARE USED ON ONE POWER CONNECTION.
- CLAMSHELL VOLTAGE MAY BE DIFFERENT THAN GRIDDLE VOLTAGE. SEE CLAMSHELL NAMEPLATE FOR PROPER VOLTAGE FOR CLAMSHELL.

TOP VIEW OF GRIDDLE

FRONT OF GRIDDLE



**For individual parts
SEE DETAIL A**

SOME ITEMS ARE INCLUDED FOR ILLUSTRATIVE PURPOSES AND IN CERTAIN INSTANCES MAY NOT BE AVAILABLE

This drawing contains information confidential to Star Manufacturing International, Inc. No reproduction or disclosure of its contents is permitted.

Model:
124S - 172S Selectronic Control Electric Griddle
LG Electric Griddle Accu-Temp Control

Lang[®]

SK2263

Rev. C 1/17/12

PARTS LIST

July 24, 2012, Rev H

| Model: 124S, 124S-480V, 124SHE, 124SCHE, Selectronic Electric Griddle | | | | |
|---|-------------------------------|-----|-----------------------------|--|
| FIG NO. | PART NO. | QTY | DESCRIPTION | APPLICATION |
| 1 | K9-XL-722-15 | 1 | PLATE ASY 2' SEL .5 GRV | 124S, 124S-480V |
| | K9-XL-722-154 | | PLTEASY 2' SEL.5GRVW/XLH12 | 124SHE |
| | K9-XL-722-C154 | | PLT ASSY 2' SEL .5" GRV CHR | 124SCHE |
| | K9-XL-722-W152 | | PLATE ASSY 2' SEL. .5 GRV | 124SC |
| 2 | 2E-41100-17 | 2 | TEMP PROBE SEL LG GRIDDLE | 124S, 124S-480V, 124SHE |
| 3 | K9-XL-228 | 1 | BUCKET SLIDE ASSY | ALL |
| 4 | K9-LG-BODY-2 | 1 | BLANK BODY LG & XL 2FT | ALL |
| 5 | 2A-Z0314 | 4 | FOOT, 4" DIE CAST | 124S, 124S-480V, 124SHE |
| | 2A-72500-05 | | LEG 4 W/BOLT DOWN ADJ | MARINE |
| 6 | K9-LGPS2-C | 1 | PNEL XL-LG SEL 2' 208/240V | 124S |
| | K9-LGPS2-C-W1 | | PNEL SEL 2' 208/240V W/CSE | 124SHE |
| | K9-LGPS2-U | | PNEL XL-LG SEL 2' 480V | 124S-480V |
| 8 | K9-50302-07 | 1 | GREASE DRAWER LG/XL | ALL |
| 9 | K9-XL-441 | 2 | PROBE HOLDER SELECTRONIC | ALL |
| 10 | K9-XL-434 | 2 | ELEMENT PAN ASSEMBLY | ALL |
| 11 | 2H-XL-424 | 2 | ELEMENT PAN INSULATION | ALL |
| 12 | K9-XL-439 | 2 | ELEMENT PAN Z ASSEMBLY | ALL |
| 13 | 2N-11030-29 | 2 | ELE GRD 208/240V4.5KW/6KW | 124S, 124S-480V & VM, 124SHE, 124SCHE |
| | 2N-11030-31 | | ELMNT GRID 480V 5991W | 124S-480V, 124SHE-480V |
| | 2N-11030-48 | | ELE GRD 440V 5991W XL/LG | 124S-440VM |
| 14 | 2N-11030-30 | 2 | ELMNT GRID 208V 1257W | 124S, 124S-208VM, 124S-480V, 124SHE, 124SCHE |
| NI | K9-50302-14 | 1 | 2' GRAB BARASSY XL-LG | MARINE |
| NI | 2E-30500-02 | 1 | TRM STRP 4 POLE 30A 600V | 124S, 124S-480V, 124SHE |
| NI | 2E-30500-07 | 1 | TRM BLOCK 3PLELRGE 125AMP | 124S, 124S-480V, 124SHE |
| NI | 2E-30501-03 | 1 | TERM STRP 4 POLE W/PUSH | 124S, 124S-480V, 124SHE |
| NI | 2P-50100-05 | | GROOVED GRIDDLE CLEANING | ALL |
| NI | 2P-50100-051 | | GRVED GRDLE BRUSH REPL | ALL |
| NI | 2P-50100-052 | | GRVED GRDLE BRUSH REPL | ALL |
| NI | 2P-50100-15 | 1 | GRIDDLE SCRAPER 12" | CROME UNITS |
| NI | 2P-50100-15-1 | - | RE-FILL REPLACEMENTS | CROME UNITS |
| NI | 2P-50100-16 | 1 | BOM AMI CLEANER | CROME UNITS |
| NI | 2P-50100-17 | 1 | 20" PALMYRA BRUSH | CROME UNITS |

**IMPORTANT: WHEN ORDERING, SPECIFY VOLTAGE OR TYPE GAS DESIRED
INCLUDE MODEL AND SERIAL NUMBER**

PAGE 1
OF 1

Some items are included for illustrative purposes only and in certain instances may not be available.



PARTS LIST

July 24, 2012, Rev H

| Model No: 136S, 136S-SC, 136SHE, 136SCHE, 136S-380VM, 136S-480V Selectronic Electric Griddle | | | | |
|---|----------------|-----|-----------------------------|------------------------|
| FIG NO | PART NO. | QTY | DESCRIPTION | APPLICATION |
| 1 | K9-XL-722-16 | 1 | PLATE ASY 3' SEL .5 GRV | 136S |
| | K9-XL-722-W162 | | PLATE ASY 3' SEL.5 GRV CHR | 136SC |
| | K9-XL-722-164 | | PLATE ASY 3'SEL .5 GRV | 136SHE |
| | K9-XL-722-C164 | | PLATE ASY 3' SEL.5 GRV CHR | 136SCHE |
| | K9-XL-719-3 | | PLATE ASY 3' SEL REAR | 136SR |
| 2 | 2E-41100-17 | 3 | TEMP PROBE SEL LG GRIDDLE | ALL |
| 3 | K9-XL-228 | 1 | BUCKET SLIDE ASSY | ALL |
| | K9-XL-288-30 | | BKT SLIDE ASSY REAR GUTER | 136SR |
| 4 | K9-LG-BODY-3 | 1 | BLANK BODY LG & XL 3FT | ALL |
| | K9-LG-BODY-3WB | | BLANK BODY 3' REAR GUTTER | 136SR |
| 5 | 2A-Z0314 | 4 | FOOT, 4" DIE CAST | 136S, 480V |
| | 2A-72500-05 | | LEG 4 W/BOLT DOWN ADJ | MARINE |
| | 2A-200716 | | LEG, 2.5" METAL | 136S-SC |
| 6 | K9-LGPS3-C | 1 | PANEL XL-LG SEL 3' 208/240V | 136S |
| | K9-LGPS3-CWB | | PNELXL-LG SEL 2' 208/240V | 136SR |
| | K9-LGPS3-K | | PANEL CL-LG SEL 3' 380V | 136S-380VM |
| | K9-LGPS3-U | | PANEL XL-LG SEL 3' 480V | 136S-480V |
| 7 | K9-60102-13531 | 1 | ACCESS PANEL ASSY 2' | 136S, 136SB, 136SC |
| 8 | K9-XL-235-1 | 1 | GREASE BUCKET ASSY S/S | ALL |
| | K9-XL-235-30 | | GREASE BKT ASY REAR GUTER | 136SR |
| 9 | K9-XL-441 | 3 | PROBE HOLDER SELECTRONIC | ALL |
| 10 | K9-XL-434 | 3 | ELEMENT PAN ASSEMBLY | ALL |
| 11 | 2H-XL-424 | 3 | ELEMENT PAN INSULATION | ALL |
| 12 | K9-XL-439 | 3 | ELEMENT PAN Z ASSEMBLY | ALL |
| 13 | 2N-11030-29 | 3 | ELE GRD 208/240V4.5KW/6KW | 136S |
| | 2N-11030-04 | | ELMNT GRID 380V 5991W | 136S-380V, 380VM |
| | 2N-11030-31 | | ELMNT GRID 480V 5991W | 136S-480V, 136SHE-480V |
| | 2N-11030-48 | | ELE GRD 440V 5991W XL/LG | 136S-440VM |
| 14 | 2N-11030-30 | 3 | ELMNT GRID 208V 1257W | 136S |
| 15 | K9-50302-15 | 1 | 3' GRAB BARASSY XL-LG | 136SR, MARINE |
| NI | 2E-30500-03 | 1 | TRM STRP 6 POLE 30A 300V | 136S, 480V |
| NI | 2E-30500-05 | 1 | TRM STRP 8 POLE 30A 300V | 136S, 480V |
| NI | 2P-50100-05 | | GROOVED GRIDDLE CLEANING | ALL |
| NI | 2P-50100-051 | | GRVED GRDLE BRUSH REPL | ALL |
| NI | 2P-50100-052 | | GRVED GRDLE BRUSH REPL | ALL |
| NI | 2P-50100-15 | 1 | GRIDDLE SCRAPER 12" | CROME UNITS |
| NI | 2P-50100-15-1 | - | RE-FILL REPLACEMENTS | CROME UNITS |
| NI | 2P-50100-16 | 1 | BOM AMI CLEANER | CROME UNITS |
| NI | 2P-50100-17 | 1 | 20" PALMYRA BRUSH | CROME UNITS |

**IMPORTANT: WHEN ORDERING, SPECIFY VOLTAGE OR TYPE GAS DESIRED
INCLUDE MODEL AND SERIAL NUMBER**

PAGE 1
OF 1

Some items are included for illustrative purposes only and in certain instances may not be available.



PARTS LIST

July 24, 2012, Rev H

| Model No: 148S, 148S-480V, 148S-SC, 148S-WB Selectronic Electric Griddle | | | | |
|---|-------------------------------|-----|--------------------------------|------------------------|
| FIG NO | PART NO. | QTY | DESCRIPTION | APPLICATION |
| 1 | K9-XL-719-4 | 1 | PLATE ASY 4'SEL REAR GUTR | 148S-WB, 148SR |
| | K9-XL-722-17 | | PLATE ASY 4' SEL .5 GRV | 148S |
| | K9-XL-722-174 | | PLTEASY 4' SEL.5GRVW/XLH12 | 148SHE-480V |
| 2 | 2E-41100-17 | 4 | TEMP PROBE SEL LG GRIDDLE | ALL |
| 3 | K9-XL-228 | 1 | BUCKET SLIDE SUPPORT | 148S, 148S-SC |
| | K9-XL-228-30 | | BUCKET WRAP REAR GUTTER | 148S-WB, 148SR |
| 4 | K9-XL-219-6 | 1 | BODY ASSEMBLY 4' XL | ALL |
| 5 | 2A-Z0314 | 4 | FOOT, 4" DIE CAST | 148S, 148S-SC |
| | 2A-72500-05 | | LEG 4 W/BOLT DOWN ADJ | MARINE |
| | 2A-200716 | | LEG, 2.5" METAL | 148S-SC |
| 6 | K9-LGPS2-CWB-4 | 1 | PNL LG-S 2' 208/240V WB 4' BDY | 148S-WB, 148SR |
| | K9-LGPS4-C | | PANEL XL-LG SEL 4' 208/240V | 148S |
| | K9-LGPS4-U | | PANEL XL-LG SEL 4' 480V | 148S-480V, 148S-SC |
| | K9-LGPS4-U-W1 | | PANEL XL ASSY-LG SEL 4' | 148SHE-480V |
| 8 | K9-XL-235-1 | 1 | GREASE BUCKET ASSY S/S | 148S |
| | K9-XL-235-30 | | GREASE BKT ASY REAR GUTER | 148S-WB, 148SR |
| 9 | K9-XL-441 | 4 | PROBE HOLDER SELECTRONIC | ALL |
| 10 | K9-XL-434 | 4 | ELEMENT PAN ASSEMBLY | ALL |
| 11 | 2H-XL-424 | 4 | ELEMENT PAN INSULATION | ALL |
| 12 | K9-XL-439 | 4 | ELEMENT PAN Z ASSEMBLY | ALL |
| 13 | 2N-11030-29 | 4 | ELE GRD 208/240V4.5KW/6KW | 148S |
| | 2N-11030-48 | | ELEM GRID 440V 5991W | 148S-440V |
| | 2N-11030-31 | | ELMNT GRID 480V 5991W | 148S-480V |
| 14 | 2N-11030-30 | 4 | ELMNT GRID 208V 1257W | 148S |
| NI | K9-50302-16 | 1 | 4' GRAB BAR ASSY XL-LG | 148S-WB, 148SR, MARINE |
| NI | 2E-30500-02 | 2 | TRM STRP 4 POLE 30A 600V | 148S-WB, 148SR |
| NI | 2E-30500-05 | 1 | TRM STRP 8 POLE 30A 300V | 148S |
| NI | 2E-30500-07 | 1 | TRM BLOCK 3PLELRGE 125AMP | 148S |
| NI | 2E-30500-07 | 2 | TRM BLOCK 3PLELRGE 125AMP | 148S-WB, 148SR |
| NI | 2E-30501-03 | 1 | TERM STRP 4 POLE W/PUSH | 148S, 148S-SC |
| NI | 2E-30501-03 | 2 | TERM STRP 4 POLE W/PUSH | 148S-WB, 148SR |
| NI | 2P-50100-05 | | GROOVED GRIDDLE CLEANING | ALL |
| NI | 2P-50100-051 | | GRVED GRDLE BRUSH REPL | ALL |
| NI | 2P-50100-052 | | GRVED GRDLE BRUSH REPL | ALL |
| NI | 2P-50100-15 | 1 | GRIDDLE SCRAPER 12" | CROME UNITS |
| NI | 2P-50100-15-1 | - | RE-FILL REPLACEMENTS | CROME UNITS |
| NI | 2P-50100-16 | 1 | BOM AMI CLEANER | CROME UNITS |
| NI | 2P-50100-17 | 1 | 20" PALMYRA BRUSH | CROME UNITS |

**IMPORTANT: WHEN ORDERING, SPECIFY VOLTAGE OR TYPE GAS DESIRED
INCLUDE MODEL AND SERIAL NUMBER**

PAGE 1
OF 1

Some items are included for illustrative purposes only and in certain instances may not be available.



PARTS LIST

January 07, 2015, Rev I

| Model No: 160S, 160S-480V, 160S-SC, 160S-WB, 160SHE Selectronic Electric Griddle | | | | |
|--|-----------------|-----|--------------------------------|--------------------------------------|
| FIG NO | PART NO. | QTY | DESCRIPTION | APPLICATION |
| 1 | K9-XL-719-5 | 1 | PLATE ASY 5'SEL REAR GUTR | 160S-WB, 160SR |
| | K9-XL-722-18 | | PLATE ASY 5' SEL .5 GRV | 160S |
| | K9-XL-722-184 | | PLATE ASY 5 GRV W/ XLH12 | 160SHE |
| | K9-XL-722-184-1 | | PLATE ASY 5' SEL. .5GRV | 160SCHE |
| 2 | 2E-41100-17 | 5 | TEMP PROBE SEL LG GRIDDLE | 160S,160S-SC, 160SHE |
| 3 | K9-XL-228 | 2 | BUCKET SLIDE SUPPORT | 160S |
| | K9-XL-228-30 | 1 | BUCKET WRAP REAR GUTTER | 160S-WB, 160SR |
| 4 | K9-LG-BODY-2 | 1 | BLANK BODY LG & XL 2FT | ALL |
| | K9-LG-BODY-3 | | BLANK BODY LG & XL 3FT | |
| 5 | 2A-Z0314 | 8 | FOOT, 4" DIE CAST | 160S,160S-SC, 160SHE |
| | 2A-72500-05 | | LEG 4 W/BOLT DOWN ADJ | MARINE |
| | 2A-200716 | | LEG, 2.5" METAL | 160S-SC |
| 6 | K9-LGPS2-C | 1 | PANEL XL-LG SEL 2' 208/240V | 160S, 160S-SC, 160SHE |
| | K9-LGPS2-CWB | | PANEL XL-LG SEL 2' 208/240V WB | 160S-WB, 160SR |
| | K9-LGPS2-U | | PANEL XL-LG SEL 2' 480V | 160S-480V |
| | K9-LGPS3-C | | PANEL XL-LG SEL 3' 208/240V | 160S, 160S-SC |
| | K9-LGPS3-U | | PANEL XL-LG SEL 3' 480V | 160S-480V |
| 7 | K9-60102-13531 | 1 | ACCESS PANEL ASSY 2' | 160S, 160S-M, 160S-SC, 160SHE, 160SB |
| 8 | K9-XL-235-1 | 2 | GREASE BUCKET ASSY S/S | 160S, 160SHE |
| | K9-XL-235-30 | | GREASE BKT ASY REAR GUTER | 160S-WB, 160SR |
| 9 | K9-XL-441 | 5 | PROBE HOLDER SELECTRONIC | ALL |
| 10 | K9-XL-434 | 5 | ELEMENT PAN ASSEMBLY | ALL |
| 11 | 2H-XL-424 | 5 | ELEMENT PAN INSULATION | ALL |
| 12 | K9-XL-439 | 5 | ELEMENT PAN Z ASSEMBLY | ALL |
| 13 | 2N-11030-29 | 5 | ELE GRD 208/240V4.5KW/6KW | 160S, 160SHE |
| | 2N-11030-31 | | ELMNT GRID 480V 5991W | 160S-480V, 160SHE-480V |
| 14 | 2N-11030-30 | 5 | ELMNT GRID 208V 1257W | 160S, 160SHE |
| 15 | K9-50302-17 | 1 | 5' GRAB BAR ASSY XL-LG | MARINE |
| NI | 2E-30500-02 | 1 | TRM STRP 4 POLE 30A 600V | 160S, 160SHE |
| NI | 2E-30500-03 | 1 | TRM STRP 6 POLE 30A 300V | 160S, 160SHE |
| NI | 2E-30500-07 | 2 | TRM BLOCK 3PLELRGE 125AMP | 160S, 160SHE |
| NI | 2E-30501-03 | 1 | TERM STRP 4 POLE W/PUSH | 160S, 160SHE |
| NI | 2E-30501-05 | 2 | TRM STRP 6 POLE W/2PUSH | 160S, 160SHE |
| NI | 2P-50100-05 | | GROOVED GRIDDLE CLEANING | |
| NI | 2P-50100-051 | | GRVED GRDLE BRUSH REPL | |
| NI | 2P-50100-052 | | GRVED GRDLE BRUSH REPL | |
| NI | K9-50302-17 | 1 | 5' GRAB BAR ASSY XL-LG | 160S-WB, 160SR |
| NI | 2P-50100-15 | 1 | GRIDDLE SCRAPER 12" | CROME UNITS |
| NI | 2P-50100-15-1 | - | RE-FILL REPLACEMENTS | CROME UNITS |
| NI | 2P-50100-16 | 1 | BOM AMI CLEANER | CROME UNITS |
| NI | 2P-50100-17 | 1 | 20" PALMYRA BRUSH | CROME UNITS |

**IMPORTANT: WHEN ORDERING, SPECIFY VOLTAGE OR TYPE GAS DESIRED
INCLUDE MODEL AND SERIAL NUMBER**

PAGE 1
OF 1

Some items are included for illustrative purposes only and in certain instances may not be available.



PARTS LIST

January 07, 2015, Rev I

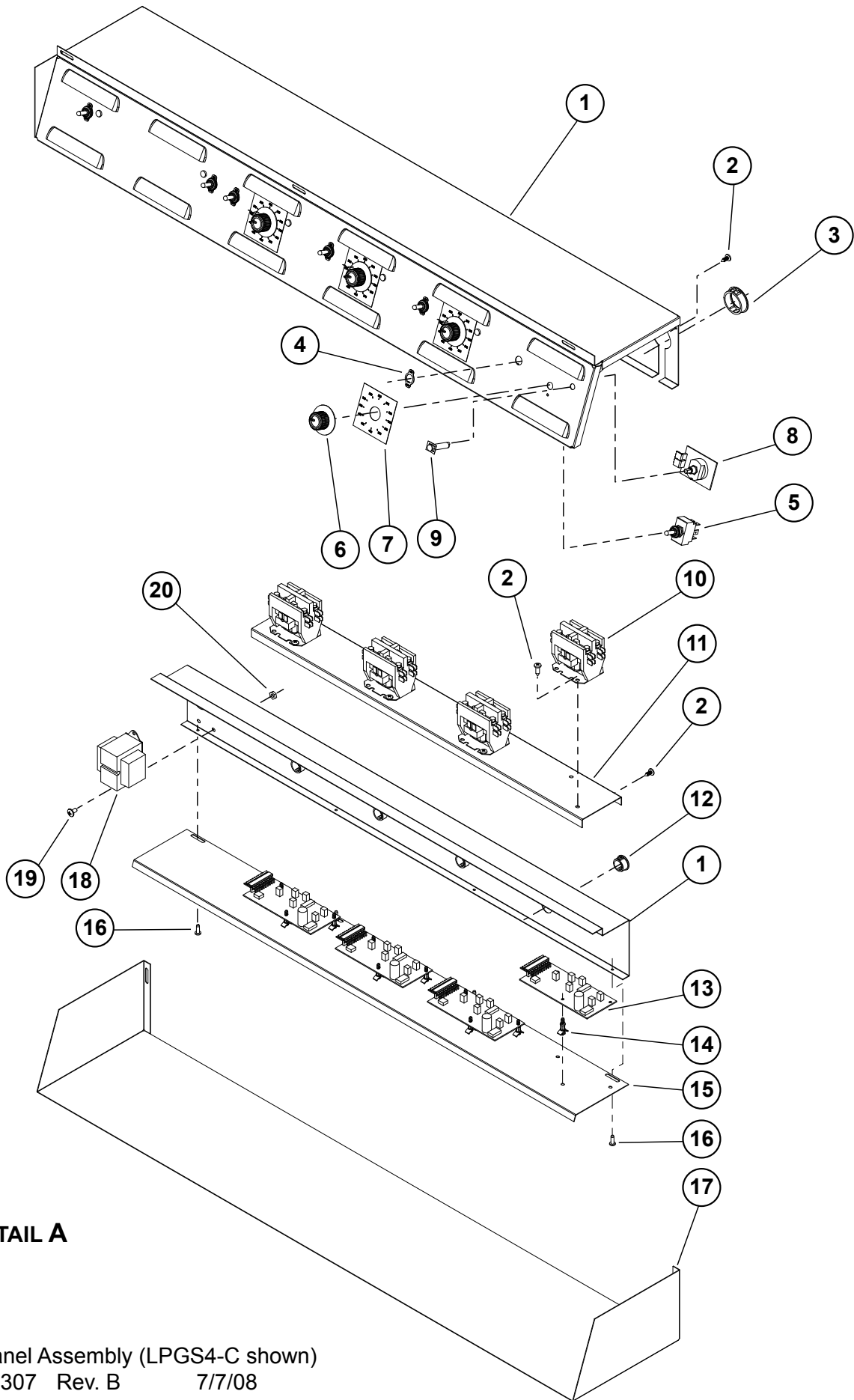
| Model No: 172S, 172S-480V, 172S-SC, 172S-480VM Selectronic Electric Griddle | | | | |
|---|-------------------------------|-----|-----------------------------|-----------------------------|
| FIG NO | PART NO. | QTY | DESCRIPTION | APPLICATION |
| 1 | K9-XL-722-19 | 1 | PLATE ASY 6' SEL .5 GRV | ALL |
| 2 | 2E-41100-17 | 6 | TEMP PROBE SEL LG GRIDDLE | ALL |
| 3 | K9-XL-228 | 2 | BUCKET SLIDE SUPPORT | ALL |
| 4 | K9-XL-219-4 | 2 | BODY ASSEMBLY 3' XL | ALL |
| 5 | 2A-Z0314 | 8 | FOOT, 4" DIE CAST | 172S |
| | 2A-72500-05 | | LEG 4 W/BOLT DOWN ADJ | MARINE |
| | 2A-200716 | | LEG, 2.5" METAL | 172S-SC |
| 6 | K9-LGPS3-C | 2 | PANEL XL-LG SEL 3' 208/240V | 172S, 172S-SC |
| | K9-LGPS3-U | | PANEL XL-LG SEL 3' 480V | 172S-480V |
| 7 | K9-60102-13531 | 1 | ACCESS PANEL ASSY 2' | 172S, 172S-CP, 172SB, 172SM |
| 8 | K9-XL-235-1 | 2 | GREASE BUCKET ASSY S/S | ALL |
| 9 | K9-XL-441 | 6 | PROBE HOLDER SELECTRONIC | ALL |
| 10 | K9-XL-434 | 6 | ELEMENT PAN ASSEMBLY | ALL |
| 11 | 2H-XL-424 | 6 | ELEMENT PAN INSULATION | ALL |
| 12 | K9-XL-439 | 6 | ELEMENT PAN Z ASSEMBLY | ALL |
| 13 | 2N-11030-29 | 6 | ELE GRD 208/240V4.5KW/6KW | 172S |
| | 2N-11030-31 | | ELMNT GRID 480V 5991W | 172S-480V, 172S-480VM |
| | 2N-11030-48 | | ELE GRD 440V 5991W XL/LG | 172S-440VM |
| 14 | 2N-11030-30 | 6 | ELMNT GRID 208V 1257W | 172S |
| 15 | K9-50302-18 | 1 | 6' GRAB BARASSY XL-LG | MARINE |
| 16 | K9-XL-759-3 | 1 | PANEL COVER ASSY 3' - CP | 172S-CP |
| NI | 2E-30500-03 | 2 | TRM STRP 6 POLE 30A 300V | 172S |
| NI | 2E-30500-07 | 2 | TRM BLOCK 3PLELRGE 125AMP | 172S |
| NI | 2E-30501-05 | 2 | TRM STRP 6 POLE W/2PUSH | 172S |
| NI | 2P-50100-05 | | GROOVED GRIDDLE CLEANING | |
| NI | 2P-50100-051 | | GRVED GRDLE BRUSH REPL | |
| NI | 2P-50100-15 | 1 | GRIDDLE SCRAPER 12" | CROME UNITS |
| NI | 2P-50100-15-1 | - | RE-FILL REPLACEMENTS | CROME UNITS |
| NI | 2P-50100-16 | 1 | BOM AMI CLEANER | CROME UNITS |
| NI | 2P-50100-17 | 1 | 20" PALMYRA BRUSH | CROME UNITS |

**IMPORTANT: WHEN ORDERING, SPECIFY VOLTAGE OR TYPE GAS DESIRED
INCLUDE MODEL AND SERIAL NUMBER**

PAGE 1
OF 1

Some items are included for illustrative purposes only and in certain instances may not be available.





DETAIL A

Control Panel Assembly (LPGS4-C shown)
 SK2307 Rev. B 7/7/08

PARTS LIST

January 07, 2015, Rev I

| Detail A: Control Panel Assembly, Selectronic Electric Griddle | | | |
|--|-----|--------------------------------|------------------------------|
| Model Number | Qty | Description | Control Panel Assembly |
| 124S, 124S-208VM | 1 | PANEL XL-LG SEL 2' 208/240V | LGPS2-C-W1, LGPSE-C (marine) |
| 124S-480V, 124S-480VM | 1 | PANEL XL-LG SEL 2' 480V | LGPS2-U-W1, LGPS2-U (marine) |
| 124SHE, 148SCHE | 1 | PANEL SEL 2' 208/240V W/CSE | LGPS2-C-W1 |
| 136S | 1 | PANEL XL-LG SEL 3' 208/240V | LGPS3-C-W1 |
| 136S-SC | 1 | PANEL XL-LG SEL 3' 208/240V | LGPS3-C-W1 |
| 136S-380VM | 1 | PANEL CL-LG SEL 3' 380V | LGPS3-K |
| 136S-480V, 136SC-480V | 1 | PANEL XL-LG SEL 3' 480V | LGPS3-U |
| 136SHE | 1 | PANEL SEL 3' 208/240V W/CSE | LGPS3-C-W1 |
| 148S, 148S-SC | 1 | PANEL XL-LG SEL 4' 208/240V | LGPS4-C |
| 148S-380V | 1 | PANEL XL-LG SEL 4' | LGPS4-K |
| 148S-480V, 148S-440/480VM | 1 | PANEL XL-LG SEL 4' 480V | LGPS4-U |
| 148SHE-480V | 1 | PANEL SL ASSY-LG SEL 4' | LGPS4-U-W1 |
| 148S-WB, 148SR | 2 | PNL LG-S 2' 208/240V WB 4' BDY | LGPS2-CWB-4 |
| 160S, 160S-SC, 160SHE | 1 | PANEL XL-LG SEL 3' 208/240V | LGPS3-C-W1 |
| 160S, 160S-SC, 160SHE | 1 | PANEL XL-LG SEL 2' 208/240V | LGPS2-C-W1 |
| 160S-480V, 160SHE-480V | 1 | PANEL XL-LG SEL 2' 480V | LGPS2-U-W1 |
| 160S-480V, 160SHE-480V | 1 | PANEL XL-LG SEL 3' 480V | LGPS3-U-W1 |
| 160S-WB, 160SR | 1 | PANEL XL-LG SEL 2' 208/240V WB | LGPS2-CWB |
| 172S, 172S-SC | 2 | PANEL XL-LG SEL 3' 208/240V | LGPS3-C-W1 |
| 172S-480V | 2 | PANEL XL-LG SEL 3' 480V | LGPS3-U-W1 |

| Control Panel Parts Listing | | | | |
|-----------------------------|-----------------|-----|----------------------------|---------------------------------------|
| Fig No | Part Number | Qty | Description | Control Panel Assembly |
| 1 | K9-XL-725-03 | 1 | ELECT BOX ASY 2' LG SEL | LGPS2-C, LGPS2-U |
| | K9-XL-725-030 | | ELECT BOX ASY 4' LG SEL | LGPS2-CWB-4 |
| | K9-XL-725-030 | | ELECT BOX ASY 4' LG SEL | LGPS2-CWB-4 |
| | K9-XL-725-032 | | ELECT BOX ASY 2' LG SEL | LGPS2-CWB |
| | K9-XL-725-03-W1 | | ELE BOX ASSY 2' SEL W/CSE | LGPS2-C-W1 |
| | K9-XL-725-07 | | ELECT BOX ASY 3' LG SEL | LGPS3-C, LGPS3-U, LGPS3-K |
| | K9-XL-725-071 | | ELECT BOX ASY 3' SEL W/CSE | LGPS3-C-W1 |
| | K9-XL-725-11 | | ELECT BOX ASY 4' LG SELECT | LGPS4-C, LGPS4-U |
| | K9-XL-725-13 | | ELEC BOX ASSY 4' SEL | LGPS4-U-W1 |
| 2 | 2C-20103-02 | 14 | SCRW SM PLT 10 X .5 PHL SL | LGPS2-C, LGPS2-U |
| | | 22 | | LGPS3-C, LGPS3-U, LGPS3-C-W1, LGPS3-K |
| | | 26 | | LGPS4-C, LGPS4-U, LGPS4-U-W1, LGPS4-K |
| 3 | 2K-70801-02 | 2 | SNAP BUSH 1 3/8 SB1375-16 | LGPS4-C, LGPS4-U, LGPS3-K |
| 4 | 2E-30303-05 | 3 | SWT PLATE ON/OFF | LGPS2-C, LGPS2-U |
| | | 4 | | LGPS3-C, LGPS3-U, LGPS3-C-W1, LGPS3-K |
| | | 5 | | LGPS4-C, LGPS4-U, LGPS4-U-W1, LGPS4-K |
| 5 | 2E-30303-06 | 3 | SWT TOG ON-ON DPDT BLK | LGPS2-C, LGPS2-U |
| | | 4 | | LGPS3-C, LGPS3-U, LGPS3-K |
| | | 5 | | LGPS4-C, LGPS4-U, LGPS4-U-W1, LGPS4-K |
| 6 | 2R-70701-28 | 2 | KNB BLK 1/4BUSH2SETSCW@90 | LGPS2-C, LGPS2-U |
| | | 3 | | LGPS3-C, LGPS3-U, LGPS3-K |
| | | 4 | | LGPS4-C, LGPS4-U, LGPS4-K |
| 7 | 2M-60301-29 | 2 | PNLLBL SELCT SWTDIAL 450o | LGPS2-C, LGPS2-U |
| | | 3 | | LGPS3-C, LGPS3-U |
| | | 4 | | LGPS4-C, LGPS4-U, LGPS4-K |



PARTS LIST

January 07, 2015, Rev I

| Fig No | Part Number | Qty | Description | Control Panel Assembly |
|---------------|--------------|-------------------------|---------------------------------------|---|
| 8 | 2E-30304-22 | 2 | SWTCB175-450oFW/41100-13 | LGPS2-C, LGPS2-U |
| | | 3 | | LGPS3-C, LGPS3-U, LGPS3-K |
| | | 4 | | LGPS4-C, LGPS4-U, LGPS4-U-W1, LGPS4-K |
| 9 | 2J-31601-01 | 3 | PILOT LT 250V 6LEAD BLK | LGPS2-C |
| | | 4 | | LGPS3-C, LGPS3-U |
| | | 5 | | LGPS4-C |
| | 2J-31601-02 | 2 | PILOT LT 480V 6LEAD BLK | LGPS2-U |
| | | 3 | | LGPS3-U, LGPS3-K |
| | | 4 | | LGPS4-U, LGPS4-U-W1, LGPS4-K |
| Y9-31601-07-1 | 1 | PILOT LT 28V W/TIN CLIP | LGPS2-U, LGPS4-U, LGPS4-U-W1, LGPS3-K | |
| 10 | 2E-30701-04 | 2 | CONTC 2POLE 30A 24VAC | LGPS2-C, LGPS2-U |
| | | 3 | | LGPS3-C, LGPS3-U, LGPS3-K |
| | | 4 | | LGPS4-C, LGPS4-U, LGPS4-U-W1, LGPS4-K |
| 11 | K9-XL-522-11 | 1 | CPMTACT. MNT PLT 2' SEL | LGPS2-C, LGPS2-U |
| | K9-XL-522-12 | | CNTR MT PLT 3' SLCTRNC LG | LGPS3-C, LGPS3-U, LGPS3-K |
| | K9-XL-522-13 | | CONT. MNT PLT 4' SELEC LG | LGPS4-C, LGPS4-U, LGPS4-K |
| 12 | 2K-70801-04 | 4 | SNAP BUSH 3/4 SB750-10 | LGPS2-U |
| | | 5 | | LGPS3-C, LGPS3-U, LGPS3-K |
| | | 6 | | LGPS4-C, LGPS4-U, LGPS4-K |
| 13 | 2E-40101-W19 | 2 | CIRBD SI TEMP CNTRL NO | LGPS2-C, LGPS2-U |
| | | 3 | | LGPS3-C, LGPS3-U, LGPS3-K |
| | | 4 | | LGPS4-C, LGPS4-U, LGPS4-U-W1, LGPS4-K |
| 14 | 2K-70801-07 | 6 | SPACER SUPPORT 1/2LG | LGPS3-C, LGPS2-U |
| | | 9 | | LGPS3-C, LGPS3-U, LGPS3-K |
| | | 12 | | LGPS4-C, LGPS4-U, LGPS4-K |
| 15 | K9-XL-522-10 | 1 | CIRC BRD MNT 4' | LGPS4-C, LGPS4-U, LGPS4-K |
| | K9-XL-522-8 | | CIRCUIT BOARD MOUNT | LGPS2-C, LGPS2-U |
| | K9-XL-522-9 | | CIRC BOARD MOUNT 3' | LGPS3-C, LGPS3-U |
| 16 | 2C-20102-04 | 3 | SCRW PHD ST 8-32X.5 PLTD | LGPS2-C, LGPS2-U, LGPS3-C, LGPS3-C-W1, LGPS3-U |
| | | 4 | | LGPS4-C, LGPS4-U, LGPS4-U-W1 |
| 17 | K9-XL-502-31 | 1 | ELECT BOX CVER 4' SEL | LGPS4-U-W1 |
| | K9-XL-524-3 | | ELECT BOX CVER SPT 3' SEL | LGPS3-C, LGPS3-U, LGPS3-K |
| | K9-XL-524-4 | | ELECT BOX CVER SPT 4' SEL | LGPS4-C, LGPS4-U, LGPS4-K |
| | K9-XL-524-5 | | ELECT BOX CVER SPT 2' SEL | LGPS2-C, LGPS2-U |
| 18 | 2E-31400-07 | 1 | XFORMR120-208-240/24V40VA | LGPS2-C, LGPS3-C, LGPS4-C |
| | 2E-31400-18 | | XFORMR 380/24VAC 40VA U/L | LGPS3-K |
| | 2E-31400-W36 | | XFRNR 480V/24V CL2 40VA | LGPS2-U, LGPS2-U-W1, LGPS3-U, LGPS3-U-W1, LGPS4-U, LGPS4-U-W1 |
| 19 | 2C-20101-24 | 2 | SCRW MS PLT 10-32 X .375 | ALL |
| 20 | 2C-20301-15 | 2 | NUT HEX 10-32 PLTD | ALL |
| NI | 2E-30501-05 | 1 | TRM STRP 6 POLE W/2PUSH | LGPS3-K |
| | 2E-30501-03 | 2 | TRM STRP 4 POLE W/PUSH | LGPS4-K |
| NI | 2T-30401-32 | 2 | STAT FXD 400°F DEG OPEN | LGPS2-C, LGPS2-C-1, LGPS2-C-W1, LGPS2-CWB, LGPS2-CWB-4, LGPS2-U |
| NI | 2T-30401-32 | 3 | STAT FXD 400°F DEG OPEN | LGPS3-C, LGPS3-C-W1, LGPS3-CWB, LGPS3-U, LGPS3-K |
| NI | 2T-30401-32 | 4 | STAT FXD 400°F DEG OPEN | LGPS4-C, LGPSA-C-W1, LGPS4-U, LGPS4-U-W1 |



STAR INTERNATIONAL HOLDINGS INC. COMPANY

Star - Holman - Lang - Wells - Bloomfield - Toastmaster
10 Sunnen Drive, St. Louis, MO 63143 U.S.A.